

# KENTUCKY

*Alumnus*

winter 1999 • volume 67 • number 4

**KENTUCKY  
BASKETBALL  
MUSEUM**

**OUT OF THE  
BLUE**



**Favorite Teachers**

Join the UK Alumni Association April 16 & 17 for

# Reunion 1999



All graduates from the 20's & 30's are invited to come home to help us honor the Class of '39 as they celebrate their Diamond Reunion.



All graduates from the 40's are invited to come home to help us honor the Class of '49 as they celebrate their Golden Reunion.



All graduates from the 50's are invited to come home to help us honor the Class of '59 as they celebrate their Ruby Reunion.



*To be apart of Reunion '99, please return this form, or call Beth at 606-257-1499, or 800-269-ALUM to help us prepare for this event!*

Name \_\_\_\_\_ Class of \_\_\_\_\_ College of \_\_\_\_\_

Address \_\_\_\_\_ City \_\_\_\_\_ State \_\_\_\_\_ Zip \_\_\_\_\_

Daytime phone \_\_\_\_\_ Evening phone \_\_\_\_\_ Fax \_\_\_\_\_

Yes! I want to be there! Please put me on your mailing list.

Yes! I'd like to help! Give me information on helping with the Reunion Committee

To make this event really special, I'd like to see my old friend/professor \_\_\_\_\_

I'd be interested in (check all that apply)

- Tour of Campus
- Tour of William T. Young Library
- Reunion Reception & Dinner
- Tickets to Keeneland

- Seminars on history, art, other \_\_\_\_\_
- Meet with classmates & faculty from my College
- Other \_\_\_\_\_

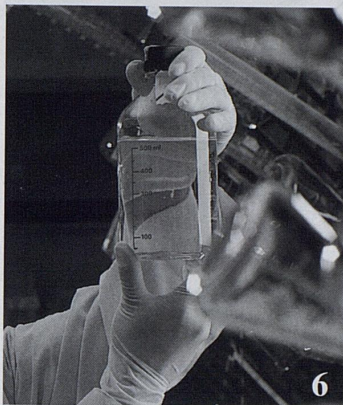
COV  
In ca  
75th  
the C  
Edu  
inclu  
to te  
Coa  
Smit  
hona  
spok  
Mor  
Scho  
Mar  
enjo  
class  
expe  
her s  
Bar  
Hag  
Dari  
Jord  
Trav  
Sims  
UK  
and  
Ass  
mem

Vol. 6  
ISNO  
The  
Alum  
publ  
quar  
Univ  
Kent  
Assoc  
Lexin  
Kent  
its di  
mem  
Opin  
expre  
not n  
those  
Univ  
Kent  
the U  
Assoc

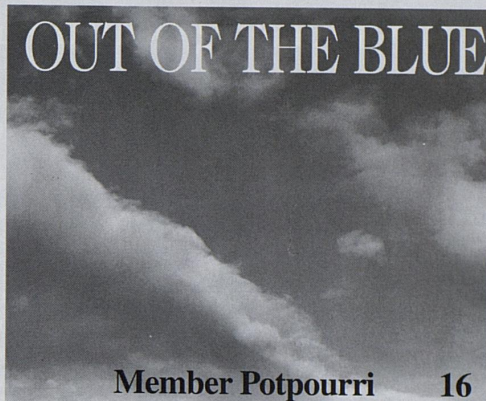
POST  
Chan  
requ  
to Th  
Alum  
UK A  
Assoc  
Lexin  
Kent  
40506

Copy 2

# KENTUCKY *Alumnus*



6



## OUT OF THE BLUE

Member Potpourri 16

**COVER:**  
In celebrating its 75th Anniversary, the College of Education included a salute to teachers. Coach Tubby Smith was the honorary spokesperson. Morton Middle School teacher Marian Sims enjoys the classroom experience with her students Bartley Haggerman, Darien Sanders, Jordan Voss and Travis Harrison. Sims is also a UK Trustee and Alumni Association board member.

### 1998-99 OFFICERS

**PRESIDENT**  
Robert F. Pickard '57, '61  
Brentwood, Tenn.

**PRESIDENT ELECT**  
Robert E. Miller  
Winchester

**TREASURER**  
Sandy Bugie Patterson '68  
Ft. Thomas

**SECRETARY**  
Stan Key '72  
Lexington

### ASSOCIATION STAFF

**DIRECTOR**  
Stan Key '72  
Lexington

**ASSOCIATE DIRECTOR**  
Matt Lucas '86  
Lexington

**ASSOCIATE DIRECTOR/ EDITOR**  
Liz Howard Demoran '68, '76

**ASSISTANT EDITOR**  
Kay Johnson '86

**COORDINATOR, SPECIAL PROGRAMS**  
Beth Haendiges

**STAFF**  
Brenda Bain  
Linda Brumfield  
Nancy Coomer  
John Hoagland '89  
Charles Livingston  
Mandy Long  
Carolyn Rhorer  
Sarah Seideman  
Darlene Simpson  
Lee A. Zuhars

**POSTMASTER:**  
Change Service requested. Send to The Kentucky Alumnus, UK Alumni Association, Lexington, Kentucky 40506-0119.

## FEATURES

**College of Education Anniversary Salute:  
Teachers Make a Difference** 10

**Basketball Museum:  
From Dream to Reality** 12

## DEPARTMENTS

**UK Beat:** 4  
A Compendium of Campus News

**Presidential Perspective:** 6  
The Next Level

**OUT OF THE BLUE:**  
Alumni Service Awards 16  
Patterns: Barbara Landrum Rice '62 18  
Spring Calendar 19

**Class Notes** 20

**Alumni Association Directory** 28



# UK Beat

## UK Helping South Africans

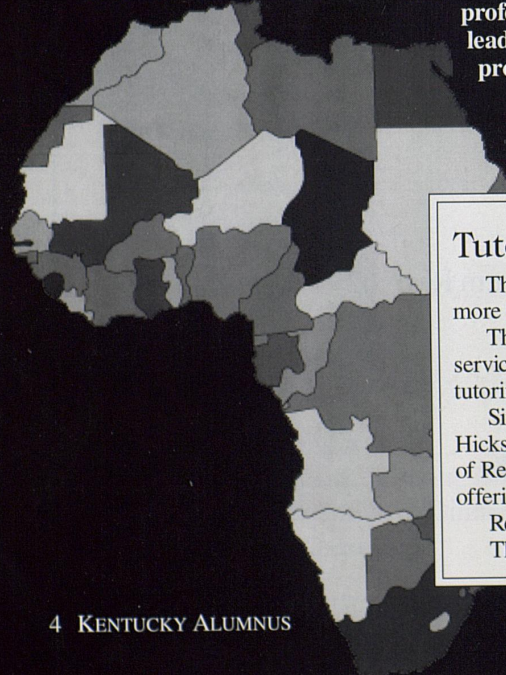
UK researchers are helping South Africans fight their country's growing HIV and AIDS epidemic with an educational model created for an Eastern Kentucky town.

Professors Holly Riffe of the College of Social Work; Vincent Gallicchio, associate dean of allied health, and Rolf Becker of the University of the North in South Africa, are training students at three South African universities using a HIV/AIDS awareness and education model similar to one created for students in the UK master of social work program offered through Prestonsburg Community College in Floyd County. The regions, and thus the programs, are similar due to similar social situations and resource availability.

Riffe says that one of the major similarities is that "students in Prestonsburg and in South Africa lack access to educational resources. The College of Social Work has been responsive to the Prestonsburg area by providing a master of social work program in the area. People in South Africa are just as capable as people in the United States. What makes the difference in the two countries' infection rates is what has not been able to happen in South Africa that has happened in Prestonsburg and the rest of the United States. Without all the resources the United States has, our rate (of HIV infection and AIDS cases) would not be as low as they are."

Classes are being offered at the University of the North, Rand Afrikaans University and the University of Pretoria. Eventually the university program will move out into the towns and villages of South Africa, Riffe said. The program has a 10-year plan

"We will be training the professionals within the villages and working with the traditional healers," she said. "We want to train them so they can begin training others in their communities to prevent this disease. Because it is such a large problem, we have to enable the professionals and community leaders to build the prevention programs they need."



## A Scholar's Scholar

The director of UK's Appalachian Center, Ron Eller, has been named the third John D. Whisman Scholar by the Appalachian Regional Commission.

During the next two years Eller will be conducting original research and providing scholarly expertise to the ARC on economic development issues affecting the 13-state Appalachian Region. An author, scholar, teacher and eighth-generation descendent of families from Appalachia, he was selected for the position for his in-depth knowledge of the region and his passion for it.

John Whisman was a longtime aide to Kentucky Gov. Bert Combs. He is widely credited for energizing President John F. Kennedy's vision of a regional approach to combat chronic poverty in Appalachia.

## New Names

Two buildings on UK's campus have been renamed to honor long-time supporters of both the university and the College of Engineering.

The Civil Engineering/Transportation Building, which houses the Department of Civil Engineering and the Kentucky Transportation Center, is now named for Oliver H. Raymond, a 1954 graduate. Raymond's career has been spent in the construction industry.

The Kentucky Transportation Center, located at the corner of South Limestone and Colfax, across from the main gate to UK, is now named in honor of S.J. "Sam" Whalen, an internationally known metallurgical engineering graduate of UK. A 1949 graduate of UK, Whalen and his wife live in Naples, Florida.

## Tutoring Program Gets Boost

The Student Government Association and Residence Life have found a way to provide more UK students with free tutoring in many subjects.

The SGA used to offer students one-on-one tutoring, but the high demand made that service close to impossible. Residence Life had programs at the residence halls offering free tutoring to incoming freshmen, who are the majority of the students living in residence halls.

Since neither program had the budget to provide enough tutoring to meet demand, Jason Hicks, tutor coordinator for the SGA, approached Melanie Tyner-Wilson, assistant director of Residence Life. "Now, all our bases are covered and we've filled the demand rather than offering the same classes."

Residence Life uses graduate students. SGA sponsors peer-tutoring.

The two groups schedule sessions Sunday through Friday evenings at the dorms.



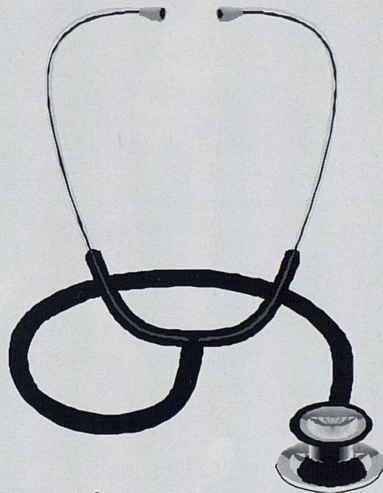
# UK Beat

copy 1

## The People We Touch

Jes and Clementine Schlaikjer lived in Prescott, Arizona. She died in December 1995, and he died in September 1996. They bequeathed most of their estate to UK for endowments to support equine infectious disease research. The endowments will create chairs and professorships in the Department of Veterinary Science and support other equine research programs and initiatives.

The Schlaikjers spent 40 years together traveling the world riding and training their horses – mostly Saddlebreds and Morgans. Horses had given them so much pleasure that they committed their life's worth to equine research. While in their veterinarian's office in Arizona in 1991, they saw one of the UK Equine Research Foundation newsletters. They called the foundation asking for more information and within six months rewrote their will to include UK. Even though they never visited UK and never met personally with university officials, the Schlaikjers, who insisted on anonymity until after their deaths, left their estate in the amount of more than \$7 million to UK to fund research for cures for equine infectious diseases.



## A New School for UK

For many years, the UK College of Medicine has been enrolling students in a master's of public health degree program. Now all the pieces involved in that program have been brought together to form the UK School of Public Health that will award a degree titled the master's of public health. The first students in the School of Public Health's MPH program will begin classes this fall.

Kentucky students, particularly non-traditional students who work in health departments, have a difficult time obtaining a public health degree. The new school brings together faculty from throughout the university to focus on teaching, research and service in public health.

Trends in health care, including the growth of managed care, new information technology in health care, and a renewed emphasis on health promotion and disease prevention, point to the need for such a school.

The designation of this comprehensive School of Public Health results in the Chandler Medical Center becoming one of a few academic health centers composed of all six schools of the health professions.

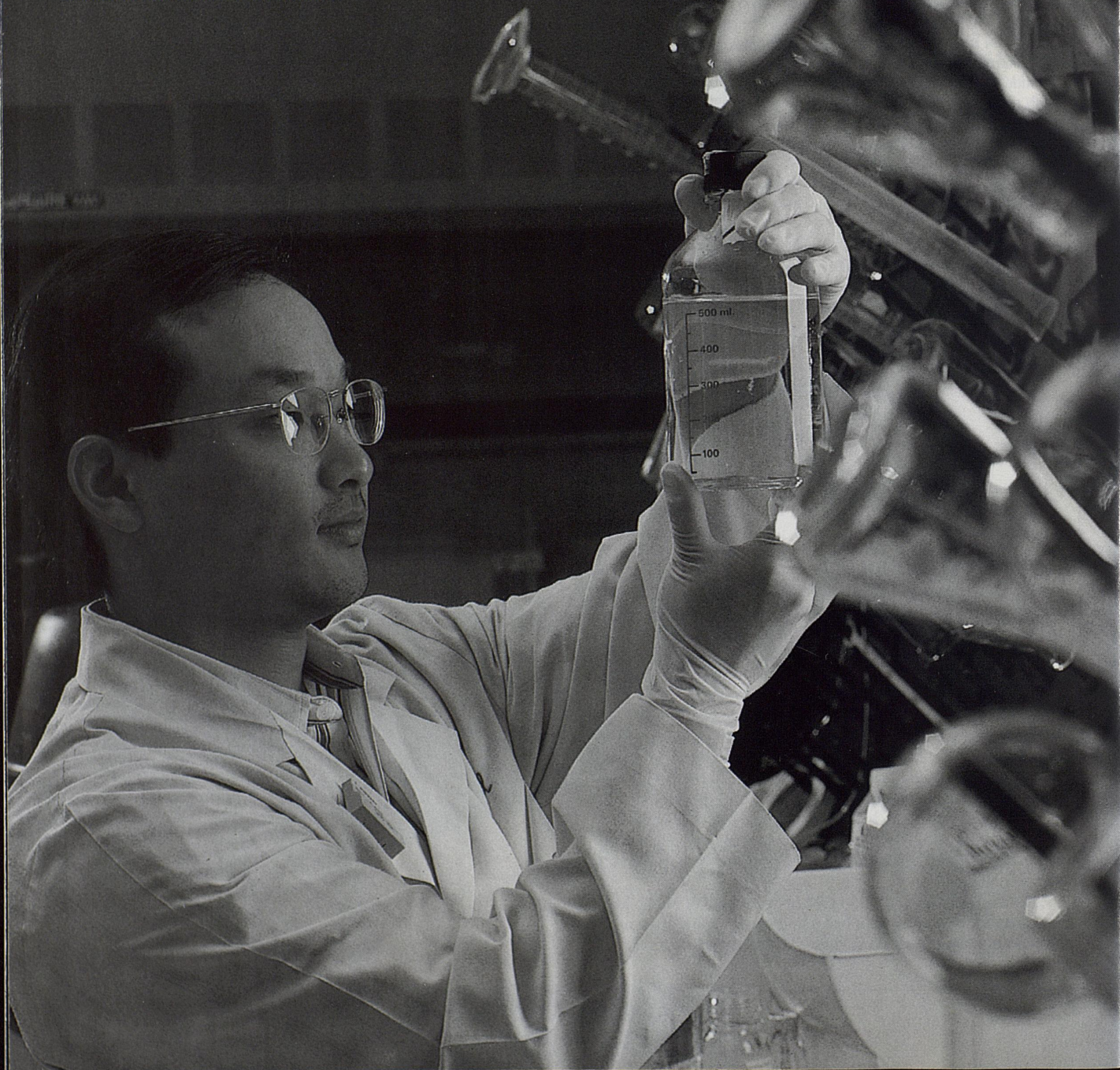
## "Pass-Thru" is Dedicated

A sculpture created by Richard Hunt, an artist whose works are exhibited in the Art Institute of Chicago, now stands on the north lawn of the UK Singletary Center for the Arts, facing Euclid Avenue directly across from Memorial Coliseum. The October dedication of the 12-foot, 600-pound stainless steel work launched the 60<sup>th</sup> annual conference of the MidAmerica College Art Association at UK.



## Presidential Perspective

*Graduate student David Koh conducts research in Dr. Myron Jacobson's lab at UK's Advanced Science and Technology Commercialization Center, known as ASTeCC. Jacobson's basic research in ADPR transfer reactions is leading to new drug designs for patient use. Photo: Research and Graduate Studies*



## The Next Level

In sports it's common to hear that so-and-so has taken his or her game "to the next level." It generally means that the quality of their performance has improved and that they are excelling in their sport. The term is often applied to those who achieve more than what is expected of them.

We heard these kinds of references as our men's basketball team, not generally considered one of the top four in the country last year, made it to the Final Four and then brought home the NCAA Basketball championship trophy. We heard it as the UK football team, under the direction of Hal Mumme, played competitively with top teams in perhaps the toughest league in the nation this season and earned their way to the Outback Bowl.

That is the kind of excitement and expectations for which we strive in academics at the University of Kentucky.

Becoming one of the very best academic institutions in the country has long been one of the university's goals. Now we are beginning to see others reaching out to help us achieve those goals.

The Kentucky legislature has provided us a tremendous opportunity in launching the Research Challenge Trust Fund. For those of you who are not familiar with this effort, the state General Assembly earlier this year authorized matching funds of up to \$66.7 million for research at UK. For every dollar that is raised in private funding at UK to endow research chairs, professorships, fellowships and research initiatives, the state will offer a matching amount — up to \$67 million.

UK is now engaged in a major effort to accept the state's challenge and orchestrate a campaign that will touch and



*Charles T. Wethington, Jr.*

improve every area of this university. We are seizing this opportunity to launch a longer-range, fund-raising capital campaign that will begin to position the University of Kentucky as one of the very best institutions of higher learning in the nation.

Our first goal is clear. We intend to use every resource that the state is making available to us to move toward becoming a top 20 public university by the year 2020. This university has identified targets of opportunity — areas of research and study at UK that already are, or have the potential to be, truly excellent. Recently, one of this state's leading corporations, Ashland, Inc., and an alumnus who has retired as a successful businessman in this state, Oliver Raymond, have stepped forward with significant gifts that are first steps in allowing us to meet our targets. We pledge to build on their generosity.

I know that you care as much as I do about continually improving the quality of your alma mater. I believe we have an obligation to future generations of students to make UK the best it can be.

We are seeking your financial support; but just as important we are seeking your vocal support. The UK Alumni Association Board of Directors will be joining the UK Development Council and others in helping UK reach these important goals. With your backing, we can indeed see that UK takes the academic excellence we have come to expect and appreciate "to the next level."

### Academic Highlights 1998

**U**niversity of Kentucky faculty and staff attracted a record \$131,495,395\* in contracts, grants and gifts from sources outside the university during 1997-98. The amount represents a 4.7 percent increase over the previous year, when a record \$125.6 million was established.

Among the largest grants given were those to:

Eric Spohn, dentistry, to establish a dental program that could eventually benefit 60,000 school children in Kuwait;

Dick Clayton, Center for Prevention Research, to research the impact of drug and alcohol abuse on young people and the causes of nicotine addiction;

David Snowden, Sanders-Brown Center on Aging, to continue studying causes and prevention of Alzheimer's disease in a group of 600 members of the Sisters of Notre Dame, and

John Connolly, Center for Computational Sciences, to stimulate research in such areas as carbon-based materials and developmental neurobiology and to support the work of the Kentucky Center for Structural Biology.

Discoveries by faculty are seeds that can change lives. The discoveries touch on everything from daily lives

to chance happenings — from the treatment of diabetes to expediting brain surgery recovery. Here is just a taste of the cutting-edge research being performed by UK faculty.

- A collaborative study headed by Mark Mattson at the Sanders-Brown Center on Aging has identified an enzyme that, when present in nerve cells, can protect the cells from being killed in cell cultures and animal models of stroke and Alzheimer's disease. Future study and development of this discovery could lead to improved therapies for stroke and Alzheimer's patients.

**Discoveries by faculty are seeds that can change lives. The discoveries touch on everything from daily lives to chance happenings — from the treatment of diabetes to expediting brain surgery recovery.**

- Researchers at the Head Injury Research Center have developed the first anabolic cocktail — a combination of nutritional and growth supplements — to help patients recover from traumatic brain surgery.

- The world's first potential new treatment for Type 1 diabetes since insulin shows

promise in improving blood sugar control, according to a study under way by Kathryn Thrailkill, chief of pediatric endocrinology.

- Researchers at UK also take on the tough issues that make news in this country and throughout the world. Headed by Claudia Peck-Heath, associate dean of the College of Human Environmental Sciences, researchers surveyed welfare recipients to determine the future impact of welfare reform. Most welfare recipients said they are confident they will find work, but are pessimistic about others having the same success.



## Presidential Perspective

- UK faculty researchers also are studying alternative uses for tobacco through plant biotechnology — a primary mission of the UK Tobacco and Health Research Institute. Through a commercial licensing agreement with UK, United Agri Products is developing crop varieties using a genetic promoter developed by R. J. Shepherd and Indu Maiti of the plant pathology department. Under another agreement to use institute technology, Inhibitex Inc. is pioneering the development of environmentally compatible, anti-corrosion agents. University Research professors for the coming academic year are Joseph Chappell, agronomy, who studies the mechanisms that plants use to defend themselves against microbial attack and Peter Eklund, physics, who studies the properties and potential applications of nanotubes, tiny carbon strands that are stronger than steel and conduct electricity.
- Zhigang Wang, toxicology, is one of four researchers in the United States to receive a \$195,000 Burroughs Wellcome Fund New Investigator Award in Toxicology. The grant will be used to further his studies into how DNA damage caused by radiation or chemical carcinogens turns into cancer-causing mutations in humans.
- Thomas Kelly, behavioral sciences, participated in a NASA Space Shuttle flight last January by launching a computer program to monitor the crew's behavior and speed. Kelly worked in collaboration with the Johns Hopkins University School of Medicine and other scientists to create the software.
- Chandler Medical Center electrophysiologist Andrea Natale has performed the first internal atrial cardioversion in Kentucky, whereby energy is sent through catheters inside the heart to restore a normal heart beat.
- Arthur Cammers-Goodwin, chemistry, has won a Career Award from the National Science Foundation totaling \$300,000 over four years for research and teaching. Cammers-Goodwin is designing shape and functions in organic molecules dissolved in water.
- Paul Toussaint, director of the Kentucky Transportation Center, has been awarded the largest grant to any member of the UK faculty or staff this year, a \$2.5 million award from the state to determine the extent of the problem of erodable bedrock under existing highway bridges in Kentucky.

*\*Includes Community Colleges*

*Source: University of Kentucky 1998 Annual Report*



# Who's Your Favorite Teacher?

By Kay Johnson

Asking "Who's your favorite teacher?" will get a conversation going with anyone from three to 103. So what could be a better way to recognize the 75th anniversary of the UK College of Education than to give people an opportunity to answer that question?

As a special salute to teachers everywhere, the college invited people to write and tell of their own experiences with a teacher held close to their hearts.

Men's basketball coach Tubby Smith was delighted to join in the campaign. He appeared in television and radio announcements aired statewide recalling teachers who have made a difference in his life. He asked listeners to do the same. Flyers with his picture, and these words, also were distributed to encourage participation:

"Great teachers can be found in the gym, in the laboratory, and in the classroom.

"As I look back on my days at Great Mills High School and George Washington Carver Elementary, the teachers sure made a difference in my life.

"The University of Kentucky College of Education is helping all of us remember the teacher who made a difference."

The response is an affirmation of the men and women who choose teaching not only as a job, but also as a noble profession. Everyone who has had any success can point to a teacher of influence in his/her past.

Diana Heist's experience with Jo Lisa Way '85, a teacher at Eubank Elementary School, is a reminder that tenacity is an especially good trait in an educator. Heist's son, who is now 15 years old, came to Way's first-grade class with an undetected hearing problem. Because he could read lips so well it took several months to get the correct diagnosis. Way stuck with it, and when he finally received his hearing aides and used an audio trainer in class "she helped the other children see Marcus as just a normal boy. She made it clear to everyone that there is nothing wrong with his brain. He just can't hear well," says his mother.

Today, Marcus is a sophomore at Pulaski High School where he has received honors in ROTC.

Heist continues, "Jo Lisa is a fifth grade teacher now, and I hear parents saying how she goes that extra mile with her students. I know that because of the support and care she gave Marcus he is on the road to a better education."

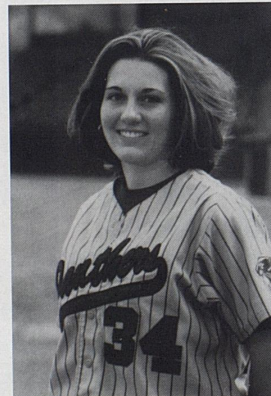
Among the shorter letters is this one. Robert Leahy of Owensboro simply wrote, "two teachers who made a difference in my life are Sister George Marie and Sister Martha Ann. Both of these Catholic nuns, now way up in years, live at the Ursuline Convent in Owensboro." And, Leo "Butch" Seger '53 asked that Johnny

Meihaus '49, his teacher and coach at St. Xavier High School in Louisville, be honored.

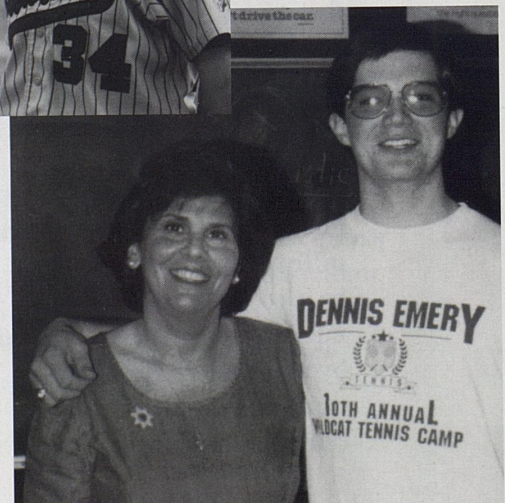
Two letters came from students in the high school class of 2000. Sixteen-year-old Bethany Slone is a junior at Pike County Central high School in Pikeville. She says that after hearing Tubby Smith's radio announcement she immediately thought of David Larocco, a health teacher at Pike Central. Larocco is also the head wrestling coach and a school bus driver. Slone says, "Coach Larocco is a wonderful teacher. We actually look forward to going to his class." She continues, "He is indeed an extraordinary faculty adviser and friend, and I admire him as I would my own father."

The next letter also is from Pike County, and another result of Smith's announcement. Rebecca Hobbs says, "Not only do I want to recognize Cherry Lynn Pinson, but the rest of the class of 2000 at Pikeville High School wants to recognize her as well. We want to show our appreciation for the difference she has made in our lives.

"She was our English teacher for both our freshman and sophomore years. She taught us English in a way that we had never experienced before. It was fun and we learned so much. Whenever we got lazy with our studies or bored in



Student Rebecca Hobbs



Cherry Lynn Pinson and student Kristopher J. Hall

class, she was there and she kept pushing us to work harder.

"She has big dreams for us and wants us to be the best that we can be. Ms. Pinson wants us to be just as smart as everyone else in the country, but she wants us to remember and be proud of our Eastern Kentucky roots. She always says, "You may have a different accent, but that doesn't mean you're any different! Be proud of your accent and show the rest of the world you're just as smart as they are!"

"Not only has she been a great teacher, but she is a wonderful friend. It would mean so much if you could tell her how thankful we are for her and how much we appreciate her."

A letter honoring Neil C. Ward '80 came from Kenneth L. Lewis in Princeton. About Ward, who was his English teacher at Caldwell County High School in Princeton, Lewis said, "He helped tremendously in the realization of my potential and was influential in creating in me a desire for learning that still exists today. His enthusiasm for learning was instrumental in the fulfillment of a dream . . . a college education."

Ward is now retired and living in Lexington.

Here's what Sharon Childs '71 wrote about Thelma N. Johnson of Ashland. Johnson taught English and music at Booker T. Washington in Ashland. "When that school was closed due to integration, she was moved to Putnam Junior High School where she taught music. She has always and is currently teaching private piano lessons in her retirement. She has always exposed her students to the very finest music, and is known throughout the city of Ashland for her fine musical talent.

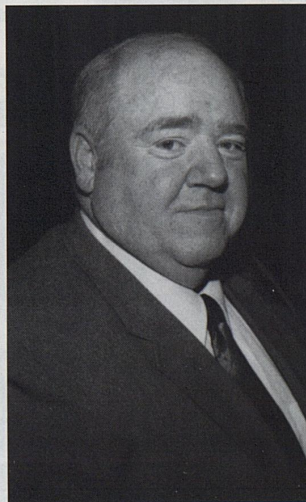
"Miss Johnson always made sure that her pupils spoke grammatically correct English. No matter where we (her students) were, inside or outside of the classroom, she would always correct us if we used incorrect grammar. I thank God today for that instruction. As I teach and speak to groups, I can feel confident in my ability to communicate. Miss Johnson is truly a teacher who has made a difference in my life and so many others."

"I'm delighted to share the name of James S. Ladd as a teacher that made a difference in my life," wrote Michael Richey '73, '79. "He was my high school agriculture teacher . . . his encouragement, instruction and support motivated me to excel in the classroom, and in particular, the FFA.

"The abilities to problem-solve, communicate and lead others was, to a large extent, foundationally developed under his guidance and teaching. These abilities have been of great use in areas of my work and other pursuits. He epitomizes not only a teacher that made a difference but also a teacher that cared." Ladd is now retired and living in Lexington.

This last excerpt is from Charlene Faye Turner Walker. "It is an honor for me to nominate my first grade teacher, my second grade teacher, my third grade teacher, my fourth grade teacher, my fifth, sixth, seventh and eighth grade teacher for they are all one and the same, Mrs. Mabel Ruth Combs Jones.

"Mrs. Jones taught elementary school in the Perry County school system in Hazard for over thirty years. Most of the years were spent in a one-room school building before the days of integration. She taught grades one through eight in five subjects for five days every week. Usually there were a total of 25 to 30 students in the room and the individual grade levels had three to seven students.



James S. Ladd



- *The college was established in 1923 — prior to that it had been a department in the university, and earlier, a normal school.*
- *Since 1923 the college has graduated about 18,300 alumni.*
- *There are 1,401 undergraduate, and 789 graduate students currently enrolled.*
- *The current dean is Shirley Raines.*
- *The Department of Special Education is consistently ranked among the nation's best since 1986.*
- *Other honored programs include rehabilitation counseling, which was selected one of seven featured programs at the 1998 National Rehabilitation Education Conference, and the Teacher Opportunity Program which was awarded the Innovation in Teacher Education Award in 1993.*

"Our school had a pot bellied stove in the back of the room and our facilities were two outside toilets, there was no running water and we were given used books. Most people would consider those things barriers to a good education but Mrs. Jones' philosophy was the same as Nietzsche's, what does not kill us makes us stronger, and she was right. Hundreds of students passed through the Town Mountain school under the teaching and principalship of Mabel Jones.

"People may say that it happened so long ago that it is a story my grandmother might tell, but it was not so long ago. I am only 43-years-old and many of her former students are younger.

"There is no doubt that she shaped many lives in that small community, black and white alike. Although we were not integrated we did have a few white students. They neither realized that they were different from us nor did we realize we were different from them. We were all poor, but we did not know that either. All we knew was that our education was important.

"Mrs. Jones taught us that education would make a difference in our lives and that if we worked hard and put forth our best effort that God would bless us for it.

# DREAM KENTUCKY BASKETBALL ACTION TRADITION TOURIST ATTRACTION?

That's right! At long last a museum that chronicles the storied history and tradition of Kentucky Basketball and the varied aspects of the game today is opening near Rupp Arena in the Civic Center Shops. The museum is expected to draw over 140,000 visitors annually at its prime location near the arena and downtown hotels.

The dream of a museum surfaced in 1972 as a way to honor Coach Adolph Rupp, the Man in the Brown Suit, the winningest coach in NCAA history at the time, who was retiring.

As the decades of the '70s, '80s and '90s passed the dream grew bigger. The Program continued to add to its traditions of championships and unparalleled victories. There were three more national championships under three different coaches. The one in 1978 with coach Joe B. Hall at the helm evokes memories of the power of Rick Robey, Mike Phillips and James Lee and the finesse of Kyle Macy, Truman Claytor and Jack Givens. Givens scored 41 points in the championship game, and that was before a player got three points for those long shots.

Then the Kentucky Wildcats established themselves as the

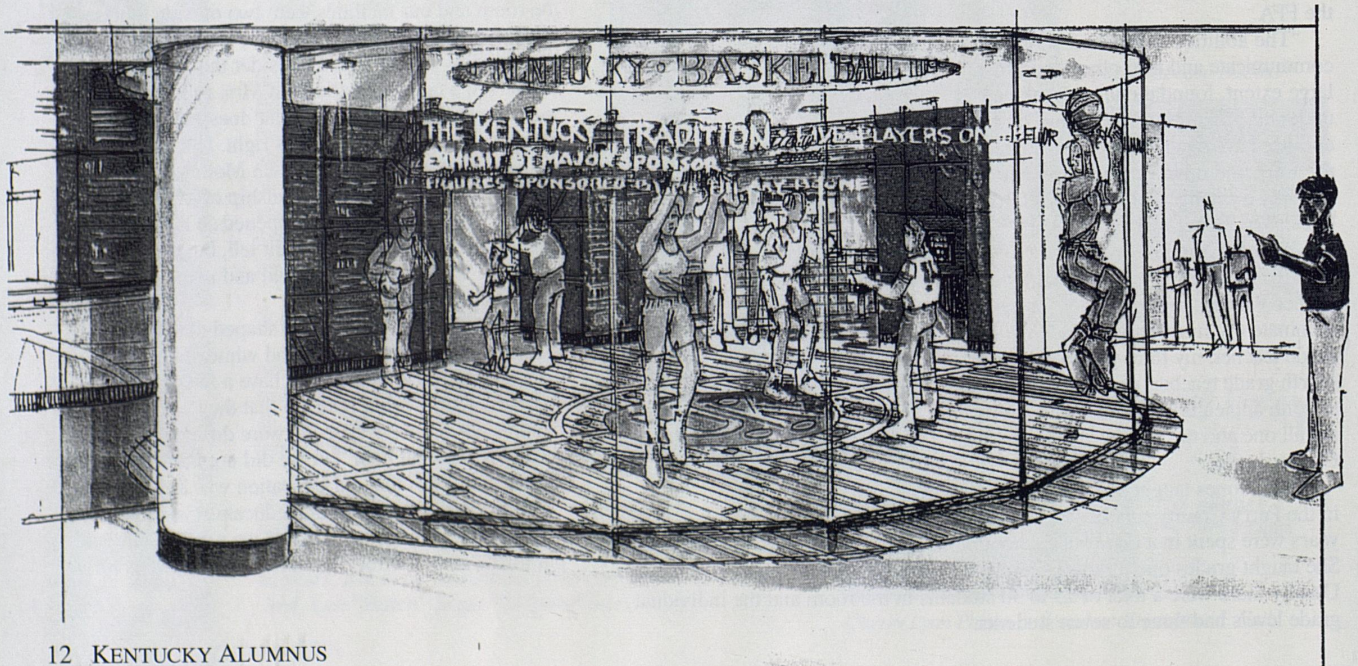
team of the '90s. They won championships in 1996 with coach Rick Pitino leading the Unbelievables to the top and again in 1998 when first year coach Orlando "Tubby" Smith delivered the unexpected championship. In 1996, 1997 and 1998, UK appeared in three Final Fours, winning two. The National Basketball Association draft took nine UK players in the '90s — Jamal Mashburn, Rodney Dent, Antoine Walker, Tony Delk, Walter McCarty, Derek Anderson, Mark Pope, Ron Mercer and Nazr Mohammed — with eight of them going in the first round.

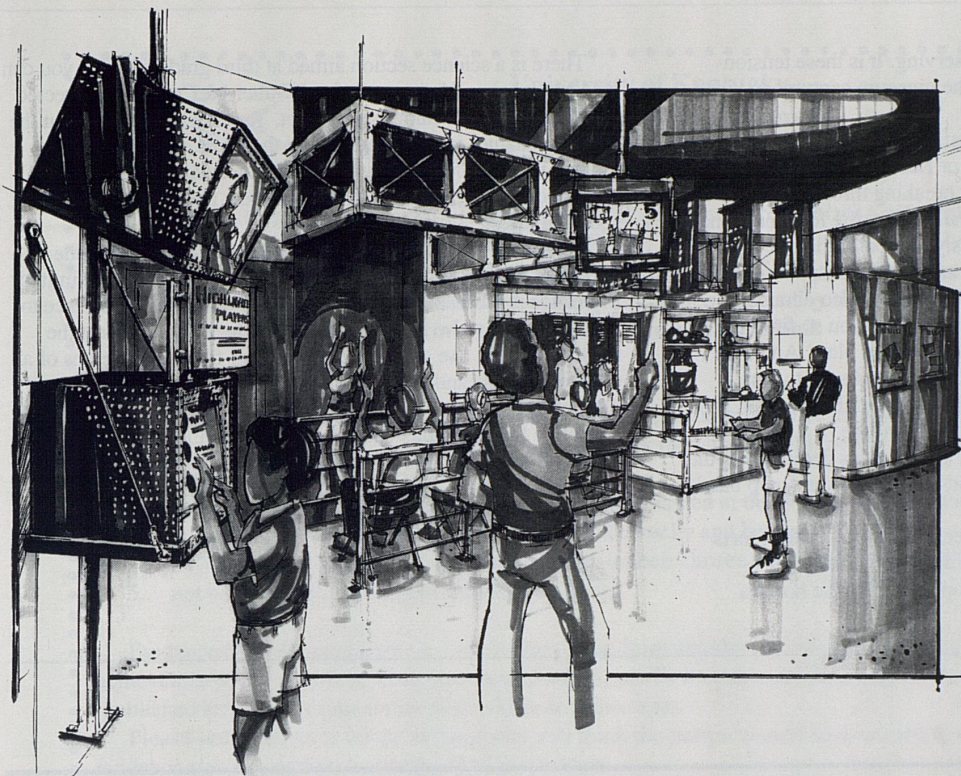
Around 1985, some players got together again to talk seriously about a museum. What was supposed to be a short tenure of leadership for Jim LeMaster, a sterling player from 1966-1968, became a long-term commitment. In 1992, then-mayor Scotty Baesler, himself a former player, formed a planning committee to study the feasibility of a UK basketball museum.

"Some of the vision Scotty and others had is now starting to bear fruit," says museum director Mike Durham. "When you look at the critical mass of cultural attractions downtown with the Children's Theatre, Children's Museum, the galleries that have been here some time, the actors groups, the Kentucky Theatre and the Opera House, they add up to be a greater magnet and should really be an attraction."

The planning committee finished in October 1992 with a recommendation to proceed. Jane Vimont became the project coordinator during the launch phase. LeMaster was asked to continue as head of the fundraising effort and as president of the board of directors. Currently serving on the museum's board of

*The UK Basketball Museum is 10,000 square feet of history, education and entertainment that is expected to add \$4.5 million annually to the state's economy. This, in turn, will support 124 new jobs for Central Kentuckians and create nearly \$400,000 in state and local taxes.*





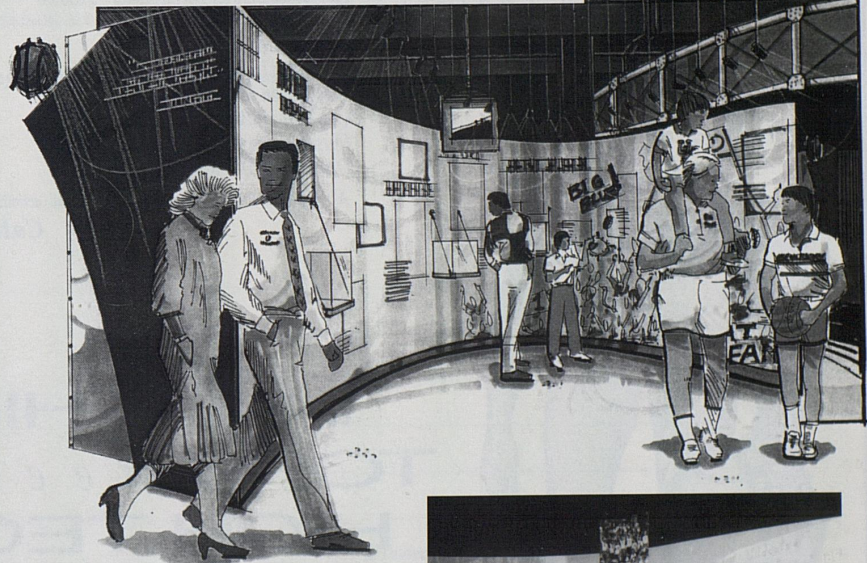
*You'll find family entertainment at the UK Basketball Museum. Look for the museum to be an alternative to an evening at the movies and the video arcade. Admission is \$7.50 for adults; \$6 for senior citizens and students, \$5 for children 7 to 12 years old and free for children 6 and under. The museum is open Monday through Saturday 10 a.m. to 7 p.m., and Sunday noon to 5 p.m. beginning February 13.*

directors, in addition to LeMaster, are Cawood Ledford, vice president; Judy Wethington, secretary; Bill Malone, treasurer; Judge John Adams, Sam Bowie, Ralph Hacker, Joe B. Hall, Larry W. Ivy, John Milward, Michael B. Mountjoy, Adolph F. Rupp Jr., and Durham.

Among the marquee games for the Wildcats in the '90s was one of the all-time great college games with Duke. The March 28, 1992, NCAA regional final went into overtime with Duke winning 104 to 103 on a shot made with barely a second remaining on the clock. And there was the biggest comeback on the road at LSU February 15, 1994, when, down 31 points with 15:34 to go, the Cats shot their way back to a 99-95 victory. And, March 22, 1998, the meetings with Duke came full circle as the Cats rallied from a 17-point deficit in another regional final to advance to the Final Four for a third consecutive year.

Mayor Pam Miller continued support for the project. The city of Lexington granted the museum a million dollars and a rent-free location for ten years. Glenn Sims was named vice president of marketing to raise awareness of the museum and intensify fund-raising efforts. Sims worked with Rupp for six years as a manager and typifies the deep, abiding love and enthusiasm so many people inside and outside the program feel for Kentucky basketball. Other communities like Midway joined in. Construction started in October 1998 in preparation for the February 13, 1999, opening.

The project went from a two-million to a six million-dollar effort; from a walk-through exhibition to a high-tech, leader-of-the-pack, interactive, exciting place to visit. It is this kind of



*Once construction started, the exhibits moved off the drawing table of dreams and into hallways of reality.*

memorabilia that the museum is preserving. It is these tension-filled moments of competition that the museum captures in video and virtual reality.

As you approach the entrance, you pass center court where five player replicas representing the eras of Kentucky basketball are assembled. One sculpture is actually breaking through the glass front. Rather than represent individual players, the four male and one female player figures typify the style of basketball, physical type and skills found in the sport throughout the past 50 years.

"We show you a seven-and-a-half-minute video about Kentucky basketball," says Sims, "that will get you so fired up you'll be saying 'put me in, coach; I'm ready to play.' And then you can go over to the virtual reality gallery and select your competition — Ed Davender, Allen Edwards, Richie Farmer, Jeff Sheppard or Kenny Walker — and go one-on-one."

There is a Hall of All-Americans, and sections dedicated to the coaches, the championship teams, and the cheerleaders, pep band and fans.

If, like UK play-by-play announcer and WVLK radio sports personality Tom Leach, you dream of being an announcer yourself, you can sit behind the microphone and take home a demo tape of your skill.

There is a science section aimed at third graders where you can discover what and how much food Walter McCarty was expected to eat on his 9,000-calorie-a-day diet. You also can learn about the body mechanics involved in playing the game, principals of physics involved in scoring, the importance of strength training and conditioning, and how to prevent, treat and recover from sports injuries.

Long-time equipment manager Bill Kightley has been the unofficial keeper of much of the tradition, but his space is limited. My office is the '90s," says Kightley. "I'll actually have a place to work now that we've found a good home for these things at the museum. Gosh, I've got trophies, pieces of floors, mementos of all the tournaments and big games. This museum is just gonna be wonderful."

While these exhibits debut with the museum's opening, you will want to come back again and again. It's history made young and hip and trendy. It will be constantly changing so every time someone comes, it will be different.

become a charter  
member today



Individual Charter Membership \$150.00

**Benefits:**

Personalized Membership Card  
Collectible Limited Edition UK Print  
Recognition in the Museum  
One Year Unlimited Single Admission  
Museum Newsletter  
Discounted 20% Renewal Rate

All charter members will also be notified of special activities and events, as well as a one-time drawing for game tickets.

Family Charter Membership \$250.00

**Benefits:**

Personalized Membership Cards  
Collectible Limited Edition UK Print  
Recognition in the Museum  
One Year Unlimited Family Admission  
Museum Newsletter  
Discounted 20% Renewal Rate

Call 606-225-5670 or 800-269-1953

where HIGH  
TOPS meet  
HIGH TECH

As a charter member, you'll be among the first to go one-on-one with Wildcat legends via virtual reality, experience mind-blowing audio-visual displays and so much more. Honor Kentucky's hardwood heritage by joining the Museum's starting line-up today.

Now Open



Second Floor, Lexington Civic Center

606-225-5670 or 800-269-1953 <http://orion.mis.net/ukbb/>



**University of Kentucky  
Hall of Distinguished Alumni  
Criteria and Nomination form for the year 2000**

Every five years the University of Kentucky Alumni Association recognizes a select group of outstanding alumni and honors them by inducting them into the Hall of Distinguished Alumni. There have been 223 people honored since the Hall was established in 1965 to help celebrate the University of Kentucky's Centennial Year.

Nominations are carefully considered by a special committee selected by the Association's board of directors. Please consider the following criteria when nominating someone to the Hall.

**Candidates Must:**

1. have earned a degree from the University of Kentucky at least 10 years prior to consideration;
2. have reached and remained at the pinnacle of their industry or field for a time sufficient to demonstrate perseverance and maturation
3. be recognized by peers for having reached and remained at the pinnacle of their field or industry (renown with peers should preferably extend beyond Kentucky and beyond their field);
4. have shown evidence of actual merit of work in their chosen field, and community leadership;
5. not be the holder of an elected political office.

Evidence for meeting the above criteria must come from detailed information about the candidates credentials, achievements, the impact of those accomplishments, public awards and honors, and outside sources such as published articles and previously aired video or audio tapes.

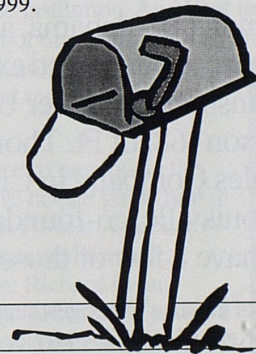
Please send a cover letter describing why you think the person should be considered, along with all of the evidence you can gather supporting that nomination.

Nominations may be submitted immediately and will be accepted until June 1, 1999.

For more information, call Kay Johnson at 606-257-1478 or 800-269-ALUM.

Send your nomination material along with the completed coupon to:

Hall of Distinguished Alumni  
UK Alumni Association  
King Alumni House  
Lexington KY 40506-0119



**Nominee**

Name \_\_\_\_\_

Address \_\_\_\_\_

City \_\_\_\_\_ State \_\_\_\_\_ Zip \_\_\_\_\_

Day phone \_\_\_\_\_ Evening phone \_\_\_\_\_

Employed by \_\_\_\_\_

Position or title \_\_\_\_\_

Address of employer \_\_\_\_\_ Phone \_\_\_\_\_

City \_\_\_\_\_ State \_\_\_\_\_ Zip \_\_\_\_\_

**Nominator**

Name \_\_\_\_\_

Address \_\_\_\_\_

City \_\_\_\_\_ State \_\_\_\_\_ Zip \_\_\_\_\_

Day phone \_\_\_\_\_ Evening phone \_\_\_\_\_

# OUT OF THE BLUE

By Kay Johnson

## Alumni Service Award We're All in This Together . . . It's just that some of us do it better

Ever wonder why some people abound in good will? And how they choose where to bestow those benevolent acts? How'd they get that way? Who influenced them to "be nice"?

The five outstanding people honored in 1998 with an Alumni Service Award for their exceptional volunteer service — Edward T. Breathitt '48, '50 former governor of Kentucky and chair of the UK Board of Trustees; Jim Bryant '67 of Birmingham, Alabama, a partner in Barnett & Bryant, a management consulting and executive search firm; Wendell Ford of Owensboro, a former United States Senator; Sandy Bugie Patterson '68, of Ft. Thomas, president of the Robert W. Bugie Sales Company in Cincinnati, and Hank Thompson '71 of Louisville, co-founder of Partnership Marketing, Inc.— may have a few of those answers.

\* Known as one of the state's strongest supporters of higher education, Breathitt's commitments to Kentucky include service as a member of the Council of Higher Education, as a member of the Board of Regents of both Morehead State University and Kentucky State University, and as a member of the Southern Region Education Board.

His favorite quote, a statement by former UK president Frank McVey, "You can't have a great state without a great University of Kentucky," sums up about everything he feels about the value of service to UK.

He counts the drive to raise the millions necessary to build the William T. Young Library as his most meaningful service as a volunteer with the Alumni Association. "The alumni of the university responded in a magnificent way, and without their help, the library would not have been built. The strength of the university lies within its alumni.

"I think all of us who owe so much to the university can give back through our loyal support of the UK Alumni Association. As a volunteer for the Association, I will work to make our capital campaign a great success to enable us to become a top-20 university by the year 2020."

When Breathitt first began volunteering at the Association, he says Helen King, the first director, was his mentor. "We have had excellent leadership in the succeeding years with Jay Brumfield, Bob Whitaker, and now Stan Key."

\* Bryant is a charter member of the Greater Birmingham-UK Alumni Club where he has served in all of the offices, including two terms as president and several terms on the club's board of directors. Before he moved so far below the Mason-Dixon line, he spent eight years as an active member of the Jefferson County Alumni Club.

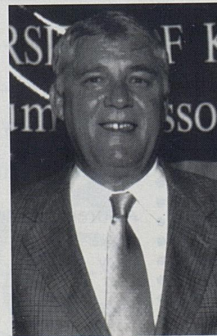
One of his pet peeve involves "those individuals who do not give something back. Whether it's school, church, community, or whatever, I firmly believe that we all need to give something back." He also considers those who do "volunteer their time, energy, and efforts trying to better our communities and schools" as heroes.

Bryant is serving his third term on the Alumni Association board of directors. He also is a member of UK's Carol Martin Gatton College of Business & Economics board of visitors advisory group. "I just try to do what I personally think is best for our university and our Association," he says. "I think 99 percent of the people I have served with on the board of our national Association have put their personal agendas and egos aside to do what they think is the best for the university and the Association."

He is particularly gratified by the success of the Birmingham Club, where he has seen the club grow from a dozen people at the organizational meeting in 1978 to today's membership of more than 125. One of his goals is to "introduce as many people as possible to the University of Kentucky and make them aware of what a great university it is, and of what a great Alumni Association it has."



Ned Breathitt '48, '50



Jim Bryant '67

Bryant also is proud of "the great strides the university has made in academics, our alumni association's role in building the new library, and renovating our alumni house. Not to mention the athletic success of the Wildcats!"



## OUT OF THE BLUE

\* Ford has been serving the Commonwealth of Kentucky since 1965 when he was elected to the state senate, then governor and now is retired as the state's senior United States Senator. He is recognized as a staunch supporter of the economic interests of Kentucky and a national leader on energy, aviation, and federal-election reform.

He says that "W.T. Young and Bill Sturgill have been inspirations to me throughout my career. They've done so much to advance the issue of education in this state and to assure every Kentuckian has the opportunity to get a college degree. Their commitment to education has helped advance the notion that education is the great equalizer and has provided countless Kentuckians with the chance to get the skills they need to build a productive future."

Ford is troubled by people who fail to exercise the right to vote. "There are people all over the world who are completely powerless in the face of their government. I think it's a tremendous loss when people in this country take their right to vote for granted . . . Kentuckians need to remember that 'government of the people and by the people' places the ultimate responsibility for its success or failure on the voters."

A quote from Henry Clay's famous speech in 1850 before the U.S. Senate on preserving the Union, where Clay described compromise as "mutual sacrifice," has been an inspiration for Ford. "For me, that quote speaks to an important balance Clay struck between his staunch independence and his belief in joining into the social contract through public service . . . If we see public service as a call to our higher selves, we can make a difference while remaining true to ourselves."

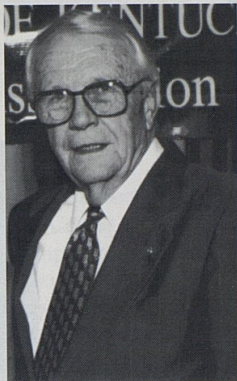
About the Association he says, "I would strongly encourage others to join the UK Alumni Association. Not only is it a way to strengthen the fabric of our university family, but each alumnus has the opportunity to play a role in continuing the success of the university into the next century."

\* Patterson says that winning the Alumni Service Award "was, without a doubt, the one most incredible thing that has ever happened to me. I've never been so stunned in my life."

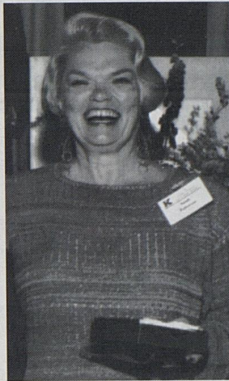
Treasurer of the Association, she views her time volunteering for the Alumni Association as a way to "pay back" the university for what she calls "my wonderful experience as a UK student." Her memories include "the first time I walked into the Alumni House." It was 1966, and "as chair of the student homecoming committee I had an appointment with Miss King. It made a big impression on me."

Obviously. The student volunteer became a devoted alumni volunteer.

Patterson, who accepts any task to further UK and Alumni



Wendell Ford



Sandy Bugie Patterson '68

Association goals, has been active on the Northern Kentucky Alumni Club board of directors since 1982, serving as secretary, treasurer, president and a member of the past president's advisory board. She was an appointed member on the Association board of directors and has since been elected to three terms.

"I treasure the people in this Association. I have served on the boards of several great organizations, but I have never worked with a group of people so eager to help with any project to 'further the cause' than

these UK volunteers."

"I believe alumni work is part of the bigger picture of supporting the university so that it can do its very best at its job," says Thompson, who served as Association president in 1996. One of the duties of the president, speaking at May graduation exercises, proved to be a very meaningful experience for him. "That day I got to see faculty members and administrators take pride as they completed another cycle in the job of the institution. And I got to see the students, the product of our work, get ready for the next stage of their life. I was impressed and inspired. It completed my year in more ways than one."

\* Thompson credits two mentors in the Association who have helped guide him in his volunteer service. Former Association director, Bob Whitaker, and former Association president Richard Bean.

"Bob took over the Association just as I was getting serious on the board, so we sort of went through the whole experience in parallel. He always reminded me, a 'business' person, that the Association was not a business, but a service organization. It helped me understand the whole organization.

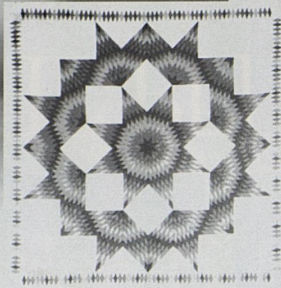
"As a leader, Richard is focused on objectives and principles, traits which I always admired. He demonstrated them in alumni leadership, both locally and nationally . . . although we don't always agree, and sometimes disagree with spirit, I looked to Richard as a mentor teaching me to be a better volunteer.

"I believe in the responsibility of personal stewardship – the concept that 'I should preserve things I care about and work to leave them better than when I found them.' Everybody must find those things they personally care about. UK, and the Alumni Association, are two I care deeply about. I will never be a member of this Association to just show up. I will always be working through it to support the University of Kentucky at whatever level. The friends, the networking, the games, etc., are fun, but they're not the reason to join."



Hank Thompson '71

# PATTERNS



## No Substitute For Healthy Diet . . . Even Among the Stars

By George Lewis

Barbara Landrum Rice is dietary consultant to the stars. Rice is among a team of NASA scientists studying the nutritional requirements of astronauts who orbit in space shuttle Discovery. The 1962 UK graduate also spent several years as a private-practice nutritionist catering to rich and famous clients in Hollywood.

Fiercely protective of her former clients' confidentiality, she will not name names.

"A fair number of my clients were people in the entertainment industry." That's as close as she'll get.

"In Los Angeles, I learned very quickly how to help improve the health of some very intelligent and headstrong people. It was quite a challenge." Rice said she occasionally spots former clients on television or in the movies and wonders if they're sticking to their diet. She still worries about their health.

The identity of Rice's current celebrity client is no secret — it's 77-year-old John Glenn, the first American to orbit the earth back in 1962. Rice and her NASA colleagues are specifically monitoring the metabolic aspects of Glenn's protein intake. The study has far-reaching ramifications.

"As we begin to look at space stations and travel on to other planets, we have to study these type factors more and more," she said. "Nutritional deficiencies can occur in six months. A trip to Mars may take three years. We do indeed need to look at a micro-gravity environment and how it affects muscle loss."

Rice said muscle loss occurs more rapidly in space for unknown reasons. "That's what we're trying to find out."

While Rice stays in communication with the astronauts, she's also connecting with students at her alma mater.

After learning of Rice's work, about five doctoral students in nutrition and food science at UK had fun thinking of questions for her. The questions, and Rice's answers are:

### ***What are the different caloric needs due to weightlessness?***

Research, both in space and on the ground, is well founded in showing that the requirements are the same in space. Most people don't believe that. They think floating is easier.

### ***Do astronauts get to pick what they eat in space?***

Yes. We have an inventory of about 350 foods to choose from, foods that available to the common person, except the form and packaging have changed. The astronauts do have the option of taking special foods from home. One astronaut



brought along Girl Scout cookies. But the food does have to be specially wrapped to endure the rigors of space flight. And they do have to be tested microbiologically.

### ***Is there a diet-acclimation period before going into space?***

No, but they do have the opportunity to have food-tasting sessions. It's all part of menu planning.

Most research on this is anecdotal. Astronauts report that it seems as if things slow down, especially with absorption. They feel full longer. We're looking into that from a pharmacological approach. It's real hard to measure that up there.

### ***What are the various mechanics of eating food in space? Do the peas fly up their noses?***

Actually, we don't fly peas. But yes, it can be a problem if they're not careful. They're briefed on how to open a package. Problem items are usually placed in a sauce to bind them. Take scrambled eggs, for instance. Food technologists had problems getting the texture and thickness right while making sure they were cohesive and did not flow out."

As one of five sisters to graduate from UK, Rice has become something of a legend at the College of Human Environmental Sciences. The Landrum tradition began about 40 years ago when Rice's older sisters, twins Ella L. Ossim '42 and Della L. Nelms '42, became the first of five Landrum siblings to graduate from the college. They were followed by Florence L. McMullin '47, '70, and Betty Landrum '55.

She has helped establish two scholarships at UK. "I have one of my own and my family established one in honor of our mother, Bessie Landrum," Rice said. "She believed in higher education. She encouraged us."

A native of Franklin, she returns to UK frequently as a guest speaker.

*George Lewis '77 is a senior information specialist at UK Public Relations.*

# Calendar

## FEBRUARY



S	M	T	W	T	F	S
	1	2	3	4	5	6
7	8	9	10	11	12	13
14	15	16	17	18	19	20
21	22	23	24	25	26	27
28						

- 2 Scottish Chamber Orchestra – Singletary Center for the Arts, 8 p.m.\*
- 3 UK Symphony Orchestra, Singletary Center for the Arts, 8 p.m.
- 16 UK Jazz Ensemble and UK Jazz Lab

Band, Singletary Center, 8 p.m.

19 The Kentucky Jazz Repertory Orchestra plays Duke Ellington, *The Early Years*, Singletary Center for the Arts, 8 p.m. Tickets \$6, \$5, \$3.\*

25 - March 7 *Mother Courage* by Bertolt Brecht – Guignol Theatre\*

26 – 27 UK Regional Tuba/Euphonium Conference, UK campus, Call 606-257-TUBA to Register.

## MARCH

S	M	T	W	T	F	S
	1	2	3	4	5	6
7	8	9	10	11	12	13
14	15	16	17	18	19	20
21	22	23	24	25	26	27
28	29	30	31			

3 Kentucky Invitational Concert Band Festival – UK Wind Ensemble and selected high school bands, Singletary Center for the Arts, 7:30 p.m.

4 The Kentucky Jazz Repertory Orchestra plays Duke Ellington, *The Middle Years*, Singletary Center for the Arts, 8 p.m. Tickets \$6, \$5, \$3.\*

7 Bluegrass Area Music Teacher's Annual Music Fest, Singletary Center for the Arts, 3 p.m.

25 Skampa Quartet – Singletary Center for the Arts\*

30 - April 4 *Picnic* by William Inge, directed by Rhoda-Gale Pollack – Briggs Theatre\*

## APRIL

1 UK Trombone Day concert featuring the Cincinnati Symphony Orchestra trombone section, Singletary Center for the Arts, 7:30 p.m.\*

2 The Kentucky Jazz Repertory Orchestra plays Duke Ellington, *The Sacred Music*, Singletary Center for the Arts, 8 p.m. Tickets \$6, \$5, \$3.\*

11 UK Percussion Ensemble, Singletary Center for the Arts, 2 p.m.

14 – 16 Duke Ellington Celebration Symposium. Call 606-257-1966\*

15 - 30 *The Pirates of Penzance* by Gilbert and Sullivan, a cooperative presentation of UK Theatre and UK Opera Theatre; directed by Russell Henderson, music direction by Everett McCorvey\*

17 The Kentucky Jazz Repertory Orchestra plays Duke Ellington, *A Celebration*, Singletary Center for the Arts, 8 p.m. Tickets \$6, \$5, \$3.\*

20 UK Chorale and Choristers Spring Concert, Singletary Center for the Arts, 8 p.m.

21 UK Symphony Band, Singletary Center for the Arts, 3 p.m.

### Club Events

#### GREATER BIRMINGHAM CLUB

Game watch parties at PT's Sports Grill

February 4 7:30 p.m. Florida

February 17 7:00 p.m. Georgia

Basketball bus trip to Tuscaloosa (leave Lakeside Baptist Church at 11:10 a.m.)

February 6 3:00 p.m. Alabama

#### GREATER CHARLOTTE CLUB

Alumni social and game watch party at The Graduate Pub

February 4 6:30 p.m. Florida

#### GREATER DAYTON CLUB

Game watch parties at Elsa's Kettering Sports Grill

February 6 3:00 p.m. Alabama

February 13 4:00 p.m. South Carolina

February 17 8:00 p.m. Georgia

March 4-7 TBA Atlanta (SEC Tournament)

Bus trip to Rupp Arena (leave Dayton Mall, Sears Auto Store at 4:00 p.m.)

February 24 8:00 p.m. Vanderbilt

#### JEFFERSON COUNTY YOUNG ALUMNI

Game watch party at Joe's OK Bayou

February 4 7:30 p.m. Florida

#### NAPLES-FT. MYERS CLUB

Game watch party at Quality Inn Gulfcoast-Harold's Place in Naples, and Potts' Sports Cafe in Ft. Myers area

February 20 Noon Arkansas

#### NORTHERN ALABAMA CLUB

Game watch parties at Bobby G's Place

February 13 4 p.m. South Carolina

February 20 Noon Arkansas

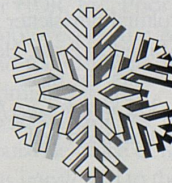
#### TAMPA BAY CLUB

Day at the Races and game watch party at Tampa Bay Downs

February 20 1:00 p.m. Arkansas

Game watch party at Damon's Courtney Campbell Causeway

February 28 Noon Tennessee



Notes: All times/details subject to change. Visit [www.uky.edu/Alumni](http://www.uky.edu/Alumni) for Calendar updates and additional events information. \* Tickets may be purchased by calling the ticket office at 606-257-4929. Prices range from \$7 to \$12, including discounts for students, senior citizens and university employees. Some season subscriptions available at significant savings.

# Class Notes

## BEFORE 1960

**James R. Kabler '38** didn't realize when he graduated from the College of Agriculture that he would be the first of three generations of UK alumni. His daughter, **Eleanor Jean Kabler Custer '65**, a nurse, was honored as the "Outstanding County School Nurse in Kentucky" this year. His two granddaughters, **Nancy Buford Custer Smith '95**, a College of Engineering graduate, and **Emily Custer**, who is a second year pharmacy student. Kabler lives in Munfordville.

**Russel C. Jones '43, '48** is an attorney in Owensboro.

**Calvin Grayson '49**, who has retired from the Kentucky Transportation Center, has been named to the Engineer's Hall of Fame by the Kentucky Society of Professional Engineers.

**Thomas B. Deen '51**, an independent consultant in Stevensville, Maryland, has been inducted into the National Academy of Engineering.

**Fred A. Engle Jr. '54, '66** retired in July from Eastern Kentucky University after 39 years there. He was a professor of economics.

**Bob G. Rogers '56** retired in 1997 as an environmental engineer with the Kentucky Division of Water. He was appointed lay canon, and is now serving as canon administrator, for the Episcopal Diocese of Lexington.

**John Killinger '57** is president of the Mission for Biblical Literacy. After several years of teaching in universities throughout the United States, he was distinguished professor of religion and culture at Samford University from 1989-1996. He has served as minister of the First Presbyterian Church of Lynchburg, Virginia, and the first Congregational Church of Los Angeles, California. Currently he is summer minister for the Little Stone Church, a resort congregation on Mackinac Island, Michigan, and writes a bi-weekly cultural newsletter for ministers published by Abingdon Press. He is the author of numerous books, the most recent of which is called *365 Simple Gifts from God*. Another book from Abingdon will appear in February.

**Clifford W. Randall '59, '63**, chair of the environmental sciences and engineering program at Virginia Polytechnic Institute and State University, has been awarded the Gordon Maskew Fair Medal from the Water Environment Federation. Randall has been an educator for 33 years.



Send your class note to Editor, Kentucky Alumnus Magazine, UK Alumni Association, King Alumni House, Lexington KY 40506-0119, or FAX 606-323-1063 or e-mail [ahumueb@pop.uky.edu](mailto:ahumueb@pop.uky.edu)

## THE 1960s

**Bill Winstead '60** is an assistant professor of history at Madisonville Community College. He lives in Dixon.

**James E. Gover '63** has been appointed head of the department of electrical and computer engineering at Kettering University in Flint, Michigan. He comes to Kettering from Sandia National Laboratories in Albuquerque, New Mexico.

**John R. "Jack" Guthrie '63** has been named to the board of directors of the UK Research Foundation for a three-year term. Guthrie, who lives in Louisville, is a member of the UK Board of Trustees. He is one of three alumni designated trustees.

**Ashton B. Burke '63**, CPA, is a partner in the Price Waterhouse firm in Warsaw, Poland.

**Gary D. Bates '64, '67** is a partner in Roenker Bates Group Management Consultants in Cincinnati, Ohio.

**James R. Lykins '64** retired as a regional vice president from Kentucky Utilities Company in June after more than 33 years of service. He lives in Danville.

**James Amato '64** is president of Sister Cities International. An attorney with McBrayer, McGinnis, Leslie and Kirkland, he is a former mayor of Lexington.

**Peter Kurachek '65, '68** was chosen "Best of the Best" dentist by *Sarasota Magazine* in its annual survey. He lives in Osprey, Florida.

**Diana H. Wall '65, '71**, director of the Natural Resource Ecology Laboratory at Colorado State University, has been elected a fellow of the American Association for the Advancement of Science. She is associate dean of Colorado State's College of Natural Resources and a professor of rangeland ecosystem science. She lives in Fort Collins.

**Robert E. Robinette '66** retired as a vice president from METLIFE in March. He lives in Oswego, Illinois.

**Brady Deaton '66, '68** is provost at Missouri University in Columbia.

**Lois Mateus '68** is a senior vice president at Brown-Forman in Louisville. She also directs their art acquisitions. Mateus divides her time between her home in Louisville and a 500-acre farm in Mercer County.

**John S. Tapp '68** of Commonwealth Technology has been presented with a service award by the Kentucky Society of Professional Engineers.

# Class Notes

**Ben D. Fister '68** of GRW Engineers has been presented with a practice session award by the Kentucky Society of Professional Engineers.

**James Klotter '68, '75** is now a professor of history at Georgetown College. Klotter spent 25 years with the Kentucky Historical Society, the last eight years as executive director and state historian. Author or co-author of 11 books, he is regarded as one of the leading authorities on the history of Kentucky.

**Stephen A. McNeely '68** is CEO/president of Aegis Communications in Los Angeles, California. He lives in Pasadena.

**Robert D. Nevels '69**, Texas A&M University engineering professor, has been named the outstanding educator in a 12-state area by the Institute of Electrical and Electronic Engineers.

## THE 1970s

**Adrianna Francis '70, '82**, a recently retired Eastern Kentucky University professor, received the Distinguished Educator Award from the Kentucky Association of Teacher Educators (KATE). Francis, who joined the ECU College of Education Faculty in 1963, continues to teach graduate courses.

**Conn Abnee '71** is the executive director of the Geothermal Heat Pump Consortium. He has more than 20 years of experience in the electric utility, marketing, advertising and construction industries. The consortium is also called GeoExchange.

**Harry J. Ries '72** is directing a team of software testers for First Union National Bank in Charlotte, N.C.

**Tanya Ashbrook Cowan '72, '73** is office manager for the Parker Insurance Agency in Somerset.

**Marilyn J. Musacchio '73** is dean of Tennessee Technological University's School of Nursing. Her career includes more than 25 years service in the U.S. Army Reserve, where she is a brigadier general. Musacchio is a member of the UK Alumni Association's Hall of Distinguished Alumni.

**Mike Pocock '73** is vice president of U.S. channel sales for Compaq.

**T.C. Christopher '73, '75** is an assistant professor of mathematics at Georgetown College.

**Susan Tomasky '74** is general counsel and senior vice president for American Electric Power. She was a partner in the Washington, D.C. office of Hogan & Hartson.



Marilyn J. Musacchio '73



Robert S. Gordon '75



Forrest W. Ragsdale III '76

**Robert S. Gordon '75** is chief administrative officer of Baptist Memorial Health Care Corporation in Memphis, Tennessee.

**Freddie Lockett '75** is a primary care physician in Nelson County.

**Robert L. Walker '75** is senior vice president and chief financial officer for the Western and Southern Life Insurance Company, a firm based in Cincinnati.

**Bill Leavell '75** is vice president for investments for Stifel, Nicolaus. He and his wife, **Sherry Carpenter Leavell '81**, and their two daughters, live in Louisville.

**Robert S. Gordon '75**, executive vice president and CAO of Baptist Memorial Health Care, has assumed the role of chair of the Tennessee Hospital Association. He also serves on the boards of the Memphis Museum System and the Better Business Bureau, and is a fellow in the American College of Healthcare Executives.

**Forrest W. Ragsdale III '76** has joined the law firm of Wyatt, Tarrant & Combs in Lexington.

**John T. Ahern '76** is an associate professor at DePaul University in Chicago. He received the Illinois CPA Society's 1998 Outstanding Educator Award.

**J. Michael Debbeler '76** has joined the law firm of Graydon Head & Ritchey, in Cincinnati, as a partner in the firm's business and finance client service department.

**James F. Graft '77** is director of sales and marketing for Filter Specialists Inc. in Michigan City, Indiana.

**Jeffrey L. Swanson '77**, a Navy lieutenant commander, has retired after 18 years of service. He most recently was based in Norfolk, Virginia.

**Richard G. York '77** is a project engineer with Lexmark International, Inc., in Lexington.

**James N. Woolcott '77, '79** is director of safety for HDR, Inc. Prior to joining HDR he was employed by the Army Corps of Engineers and the Occupational Safety and Health Administration.

**John A. Switzer '78**, formerly a partner in the Louisville office of KPMG Peat Marwick LLP, has transferred to the firm's Cleveland office.

**Jim Newberry '78, '81** has joined the law firm of Wyatt, Tarrant & Combs in its Lexington office.

**John N. Brodel '78** is professor emeritus at the University of Wisconsin-Platteville. He lives in Lancaster.

# Class Notes

**Douglas F. Sutherland '78** is vice president of the Bank of Mecklenburg in Charlotte, North Carolina.

**James E. McCullum Jr. '79** is chief engineer for the ANR Coal Company in Whitesburg.

**Phillips H. Meador '79**, who works for the Lexington-Fayette Urban County Government, has received a practice section award from the Kentucky Society of Professional Engineers.

**Carter Harris '79** is managing director of debt capital markets for Merrill Lynch in New York City. He lives in Greenwich, Connecticut.

## THE 1980s

**Wilk O. West '80**, a Navy lieutenant commander, is aboard the aircraft carrier USS Dwight D. Eisenhower.

**John Brown '80** is a senior engineer in the graphics products laboratory of the Hewlett-Packard Workstation Systems Division.

**David B. Reeder Jr. '80** is professor of accounting and chair of the Department of Economics, Accounting and Finance at the University of Evansville (Indiana).

**Beth Cunningham '80** is a vice president with AIM Distributors, Inc., in Houston, Texas.

**Mike Gray '80, '81** is a partner and the director of personal financial planning for KPMG in Raleigh, N.C. He and his wife, **Susan Bryant Gray '82**, have two children.

**Neil Crowe '81, '85** is a clinical neurologist for Winchester Neurologist Consultants in Winchester, Virginia.

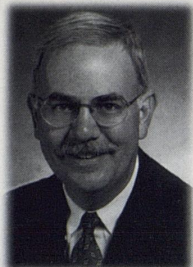
**Dale Patterson '81** is supervisor of customer accounting and billing for American Electric Power in Canton, Ohio.

**Bill Clark '81**, a CPA, is the senior premium auditor for the Kentucky Workers Compensation Funding Commission. He lives in Lexington.

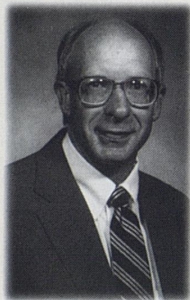
**Judy Mitchell Cooper '82** is manager of regulatory services for Columbia Gas of Kentucky. She and her family live in Lexington.

**Steve Eha '82** is zone sales manager for Norelco Consumer Products in Cincinnati, Ohio.

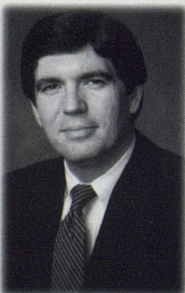
**Ralph Oriscello '82** is vice president of sales for Vicinity Corporation which is based in Palo Alto, California.



J. Michael Debbeler '76



James N. Woolcott  
'77, '79



Jim Newberry '78, '81

**Joseph D. Culin '82**, an entomology professor at Clemson University, has been named the South Carolina professor of the Year by the Carnegie Foundation for the Advancement of Teaching.

**Helen Hagan Palmer '83, '88** lives in Louisville with her family. She "retired" from IBM five years ago to be a "full-time mom."

**Tony M. Keller '83** is director of finance and administration for the Global Marketing Group at Brown-Forman Beverages Worldwide. A CPA, he is based in Louisville.

**Oliver Spencer '84** is the zone sales manager for Frito-Lay in west Texas and New Mexico. He lives in Lubbock, Texas.

**Michael Hostetter '84** is vice president of the Lexington branch of Van Meter Insurance. He has been with the company for six years.

**James J. Osborne '84** is a partner in the Phoenix, Arizona, law firm of Jones, Skelton & Hochuli.

**Mitchell J. Luy '84** is a senior engineer with Osram Sylvania in Versailles. He lives in Lexington.

**Diane "Cindy" Moon-Cerbone '84** is a business analyst on the global design team for CSR America, Inc., in Palm Beach, Florida.

**Christopher Carpenter '84** is a regional marketing manager for Duke Energy Trading and Marketing in Nashville, Tennessee. He lives in Franklin.

**Thomas Samuels '84** is director of finance for Telesis Medical Management in Louisville.

**Edwar A. Bazel '84** completed the 26.2 mile Chicago Marathon last October. In the past five years his credits have included the Los Angeles and New York marathons, and a 3,000 mile bicycle ride from Santa Monica, California, to St. Augustine, Florida, to benefit the City of Hope Cancer Research Facility. Bazel is vice president of international affairs for T.E.I., a Nashville-based firm specializing in the management and booking of adult contemporary, pop and jazz artists.

**Howard K. Hall '85** is the Pike County attorney and a partner in the firm of Lucas and Hall.

**Emilie Hall '85** is director of sales for the conference and training center at Georgetown College.

**Stephen L. Scott '85** of Fuller, Mossbarger, Scott and May Engineers, Inc., has won a service award from the Kentucky Society of Professional Engineers.

# Class Notes

**J. Todd Walters '85, '86** is the division controller for Gibson USA in Nashville. He lives in Hendersonville, Tennessee.

**Damien M. Prather '85** has joined the law firm of Boulton, Cummings, Connors & Berry PLC. The firm is headquartered in Nashville, Tennessee.

**Janna McMahan '86**, a writer, was a judge in the 1998 South Carolina Fiction Project, sponsored by the *Post and Courier* newspaper and the South Carolina Arts Commission. She recently gave up her job in public relations to write full-time.

**Barry K. Martin '86, '95** is CFO of the Shriners Hospitals for Children in Lexington. He and his wife, **Tonya Burke Martin '94**, are celebrating the birth of their first child. The family lives in Winchester.

**Patrick E. Riley '86** is the manager of industry management for GTE. He and his family have transferred back to Lexington after nine years with GTE in Dallas, Texas.

**Winston Griffin '86** is corporate counsel for Laurel Grocery Company. He and his wife, Shannon, live in London.

**William R. Precious '87** is vice president and regional trust manager for Star Bank in Louisville.

**David W. Liddle '87** is vice president for the communications management group of Nichols Dezenhall, a public relations firm in Washington, D.C. He has served as treasurer, vice president, and president of the Washington, D.C. Alumni Club. He and his family live in Reston, Virginia.

**J. Brad Elam '87** is a tax manager with Ernst & Young LLP in Louisville. He lives in Jeffersonville, Indiana.

**John S. England '87** is a partner with Deloitte & Touche in Cincinnati, Ohio.

**Janet Roberts Doak '87** is a full-time Mary Kay representative working toward becoming a national sales director. She lives in Louisville.

**Nancy Wall Smith '87** is a teacher at Garrett Elementary School in Casey County. She lives in Yosemite.

**Angie Cundiff-Roy '87** is a nurse-practitioner with a practice in Russell Springs.



John A. Switzer '78



Judy Mitchell Cooper '82



Damien M. Prather '85

**Barkley Clark '87**, an attorney with Shook, Hardy & Bacon in Kansas City, Missouri, has been named in the 1999-2000 edition of *The Best Lawyers in America*. He is a partner in the firm's corporate finance and banking section.

**Sandra Aaron Massey '88** is a physical therapist assistant at Extencicare in Somerset.

**Jeanette M. Gregory-Gray '88** works in marketing for Easter Seals in Dallas. She and Jeffrey L. Gray were married in May. They make their home in Rowlett, Texas.

**John S. Fischer '88** is an attorney with the Texas Department of Criminal Justice in Huntsville. He has been with the agency for five years.

**M. Catherine Stone Carey '88, '90, '92** is an associate professor at Western Kentucky University in Bowling Green, where she won the 1998 College of Business Outstanding Teaching Award. She and her family live in Scottsville.

**David Chewning '88** is manager of financial control for Ingersoll-Rand in Campbellsville.

**Morey E. Daniel '88** is an account executive with Universal Underwriters. His wife, **Lori S.**

**VanHoose Daniel '93**, is a defense attorney for the Roger Massengale Law Offices in Paintsville, where they live.

**Gregory L. Williams '88, '93** is the billing manager for Unidial Communications in Louisville. He lives in Mt. Washington.

**William Graham Baughman '88, '89** is vice president of sales and marketing for Campbell Oil Company in Massillon, Ohio. He and his family have moved to Canton, Ohio, from Ashland, where he had worked for Ashland Petroleum Company.

**Garnett P. Furnish '89** is the credit manager for Commonwealth Bank in Louisville. He and his wife have two children.

**Robert B. Frazer '89** received the doctor of jurisprudence degree in May from Mississippi College.

**Stephen K. Hall '89, E.J. Ham '89** and **Steve Roberts '89** practice medicine at Women's Care of the Bluegrass in Versailles.

**Lisa K. Miller '89**, an RN, works for an ob-gyn physician in Macon, Georgia.

**Sherlene Tarter Lockard '89** works in pharmaceutical sales for the Ciba Division of Novartis Pharmaceutical. She lives in Somerset.

# Class Notes

## THE 1990s

**Nancy Bridwell Albright '90, '92** is a transportation engineer for the Kentucky Transportation Cabinet.

**Rebecca B. Liebert '90, '95** is a development engineer with NOVA Chemicals in Monaca, Pennsylvania. She lives in Cranberry Township.

**Michael W. Mattingly '90** is an electrical design engineer with Fluor Daniel in Cincinnati.

**Tom McGinty '90** is manager of the Knoxville Export Assistance Center for the Commerce Department. He works with area business people to increase their foreign trade opportunities.

**John P. LeMaster '90**, who practices dentistry in Kenersville, North Carolina, received the Academy of General Dentistry's Fellowship Award in July. Earning the fellowship award means completing more than 500 hours of continuing education courses within 10 years, and passing a fellowship examination.

**Sean S. Smith '90** is president of Coalition America, Inc. He and his twin brother, **Scott S. Smith '90**, won Ernst & Young LLP Southeast Entrepreneur of the Year (emerging category) award for their business. Their company offers managed healthcare solutions, cost containment, information, and technology development services to the healthcare industry. They started the business in 1995.

**Charles Strong Olson '91** was awarded the doctor of philosophy degree in English from the University of Mississippi in May.

**Manuel Probst '91** is an assistant professor of kinesiology and health studies at Georgetown College. He previously was an instructor in fitness and the physiology of exercise at UK.

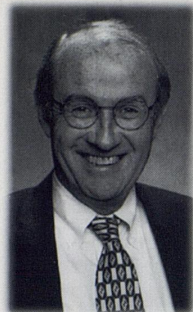
**Travis K. Musgrave '91** is an assistant vice president at Merrill Lynch & Company in Lexington.

**Jennifer Nunley '91** is a financial analyst for Brown-Forman Beverages Worldwide, Wine Group, based in Louisville. She is a CPA.

**Jonathan S. Rexroat '92** is a tax analyst for Res-Care, Inc., in Louisville. He was graduated from the University School of Law in 1995, and became a CPA in August of this year.

**Jamie D. Martin '92** works for the Kentucky Transportation Cabinet in Russell Springs.

**Kyle Maki '92** is a buyer for Jideco of Bardstown. He and his family live in Mt. Washington.



Barkley Clark '87



Jennifer Nunley '91

**Deron S. Byrne '92** is a staff engineer for Crawford & Crawford & Stewart Engineers in Burnside.

**Lisa C. Rexroat '92** is assistant director of recruiting for Arthur Andersen Business Consulting in Atlanta. She lives in Kennesaw, Georgia.

**Steve Crum '92** is in private practice with Capital Family Physicians in Frankfort.

**John P. Dando '92** is general manager of Lawless Welding, Inc., in Russell Springs.

**Cathy Littleton Thompson '92** is a teacher for the Lincoln County Board of Education. She lives in Crab Orchard.

**Elver Ratliff '93** is a project manager for Hitachi Automotive in Harrodsburg.

**Tonya Hood Dykes '93** is the accounting coordinator for Somerset Wood Products.

**Steve Alessandro '93** is a manufacturing engineer for Delphi Harrison Thermal Systems in Moraine, Ohio. He and his wife live in West Chester.

**Deborah Coffey Slaven '93** is a fifth grade mathematics teacher at Pine Knot Elementary School for the McCreary County Board of Education. She and her husband live in Stearns.

**Lea Phillips Hammond '93** is the pupil transportation manager for the Monticello Independent Schools.

**Baccus L. Oliver '93** is a senior project engineer for Apex Engineering, Inc., in Calvert City. He lives in Kuttawa.

**Daniel R. Chaplin '93** is an application engineer for General Electric-Engineering Services in Blue Ash, Ohio. He lives in Cold Spring, Kentucky.

**David L. Pedersen '93**, an ensign in the Navy, received his commission as a naval officer after completing Officer Candidate School at Naval Aviation Schools Command at the Naval Air Station in Pensacola, Florida.

**Stephen R. Brooks '93, '97** lives in Crestview, Florida. He works for the Air Force as chief of the modeling and simulation branch at Elgin Air Force Base.

**Lori Taylor '93** is an assistant professor of Spanish at Georgetown College.

**Stacy Cochran '93** is an associate with NBBJ, the nation's second largest architectural firm. She is based in Columbus, Ohio.



# Class Notes

**Michael Potter '93** and his wife have announced the birth of their daughter, Haley Ryan, who was born in July. She joins five-year-old Adam Michael.

**Lori Straus Schulte '93, '95** is an account executive with IPSOS-ASI advertising research company in Cincinnati.

**Brian K. Demps '93, '95** is an accountant with CoPar, Inc., in Hopkinsville. He and **Katherine Hicks Demps '93, '96**, an attorney, were married in 1996.

**Barry E. Frazier '93** is an account executive for NCS Mortgage Services in Norcross, Georgia. He lives in Lexington.

**Kevin R. Netherton '93**, a Marine captain, recently participated in Exercise Cooperation from the Sea '98, while assigned to the 31<sup>st</sup> Marine Expeditionary Unit.

**Richard T. Anderson '93**, a Marine captain, has graduated from the Marine Corps' helicopter co-pilot flight training course.



Kelli M. Colbert '94



Teresa Belluscio '95

**David Steinfeld '94** is an investment broker for J.C. Bradford & Co. in Nashville, Tennessee. He and **Stephanie Sellars Steinfeld '91** were married in 1997.

**Kelli M. Colbert '94** is director of public relations at Wilberforce University in Wilberforce, Ohio. She joined the staff there in 1995 as assistant director of annual funds.

**Matthew A. Sturgill '94** is a real estate zoning manager for Bell Atlantic Mobile Inc. in Bridgeville, Pennsylvania. He lives in Cranberry Township. Sturgill, who works in the network engineering department, was presented the "You Made The Future Bright" award for his contribution to the company's success.

**Karen Sutton Tipton '94** is claims supervisor for Ashland Inc.'s insurance department. She and Tony Tipton were married in April. They live in Lexington.

CREATOR IMAGES INC.

Custom &  
Limited Edition  
Wood Carvings



The Ultimate  
Display of Big Blue  
Pride!



For Orders  
& Pricing  
Call (606) 833-0009

[www.creatorimages.com](http://www.creatorimages.com)



# Class Notes

**Teresa Belluscio '95**, director of Eastern Kentucky University's Project Success program and coordinator of services for students with disabilities, has been named 1998 Counselor of the Year by the Kentucky Rehabilitation Counseling Association.

**Shannon Poole '96** is a field service representative of health care products for PharMerica. She lives in Lawrenceburg.

**Marilyn Harrille Lawson '96** is a family educator for the Laurel County Board of Education. She lives in London.

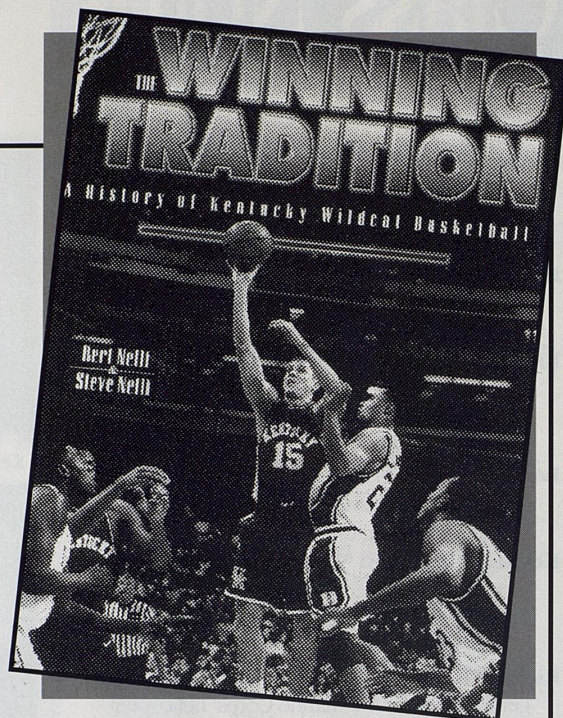
**Jamie M. Spanjer '96** is a nurse working in the labor and delivery department at Mercy General Hospital in Sacramento, California.

**Michael L. Fisher '97** is the executive vice president/owner of Fisher Industries in Dickinson, North Dakota.

**Lori F. Kincaid '97** is associate director of development for the Krieger School of Arts and Sciences at the Johns Hopkins University in Baltimore, Maryland. She previously was associate director of major gifts at UK.

**Qi Dong '97** is an engineering graduate research assistant at MIT, living in Cambridge, Massachusetts.

**James P. Doran '97** is an account executive with Morgan Stanley Investment Banking in New York City.



**THE WINNING TRADITION**  
**A History of Kentucky Wildcat Basketball**  
**Bert Nelli and Steve Nelli**  
**SECOND EDITION**

"The most thorough book I have read on UK basketball."—Cawood Ledford

When *The Winning Tradition* first appeared in 1984, it was heralded as the only complete history of the Kentucky Wildcat basketball program.

With unflinching honesty, Bert Nelli pointed out Adolph Rupp arrived at a program already strong and adopted the style of play of his predecessor, John Mauer. But the Baron possessed a fierce determination to turn out winning teams, driving the program to new heights of success.

This new and expanded edition brings the story up to date. Bert and his son Steve detail the success of Joe B. Hall, the scandals that marred Eddie Sutton's tenure, the return to glory under Rick Pitino, and provide a full accounting of Tubby Smith's history-making debut season.

Still the only complete and authoritative history of the most celebrated basketball program in the country, *The Winning Tradition* brings alive the agonies, frustrations, and glories of each and every season of Kentucky basketball, from the 1-2 record of the 1903 squad to the Comeback Cats of 1998.

**Hardback, \$24.95 • 20% discount to UK Alumni: \$19.96!**

Ask for it at your local bookstore  
 Or call 800/839-6855 to receive the alumni discount

THE UNIVERSITY PRESS OF  
**KENTUCKY**

**UK Keyrings \$3.95 each (S+H included)**



Rubberized - Flexible - Vivid Colors - Licensed Collegiate Product

Ask about our other UK Products  
 Glassware - License Plates - Car Flags - Banners

Mail to: Renaissance Specialties or Call 800-837-2425  
 1100 Pike Street  
 Covington, KY 41011

Name: \_\_\_\_\_ Phone: \_\_\_\_\_

Address: \_\_\_\_\_

Visa - Mastercard #: \_\_\_\_\_ Exp: \_\_\_\_\_

KY residents add 6% sales tax

# Class Notes

**Bart Miller '97** is corporate human resources manager for Abell Elevator International in Louisville.

**Kristen M. Campbell '97** is a realtor with Century 2 Newsom-Ball in Morehead City, North Carolina.

**Douglas Staut '97** is a management trainee for Bear Stearns in New York City.

**Gabriel M. Byrne '97** is a business solution consultant for Andersen Consulting in Cincinnati. His wife, **Carrie Hayden Byrne '97**, is an accountant at Provident Bank. They live in Florence.

**Diana Penticuff Roberts '97** is a nurse at Wayne County Hospital. She lives in Monticello.

**Resa A. Hersel '97** is a programmer for Ashland, Inc., and a student at Eastern Kentucky University.

**Jennifer Behymer '98** of Mason, Ohio, has been commissioned a second lieutenant in the Air Force. She has reported for duty at the 1<sup>st</sup> Fighter Wing at Langley Air Force Base in Virginia.

**Trevor Smith '97** is an international associate financial operations accountant for the Brown-Forman Corporation. He is based in Louisville.

## FORMER STUDENTS

**Elaine P. Olthuis** works for American PhoenixCorp, a subsidiary of The Phoenix Home Life Insurance Company. She is responsible for installation and administration of agency management systems and local area networks in the 17 American Phoenix agencies.

**Donald Schindler** retired in 1990 after 30 years with a biopharmaceuticals company. He's now busy with 16 grandchildren, and he says, "only two computers, so they have to share."

**Eleanor Kenly** is president of her own real estate firm, Mingo Associates, Inc., in Clearwater, Florida.

## NECROLOGY

The UK Alumni Association extends its sympathy to the family and friends of the deceased.

**William Martin '32** of Martin, July 25, 1997.

**Virginia F. Collins '33** of Mays Lick, September 13, 1996.

**Thomas H. Posey Jr. '33** of Greenville, S.C., July 24, 1998.

**Vivian McClure Johnston '35** of Somerset, June 2, 1998.

**Farrell R. Worley '35** of Southern Pines, Fla., May 11, 1998.

**Mary Kennady Wilson '36** of St. Petersburg, September 15, 1998.

**George C. Reed '37** of Versailles, August 7, 1998.

**Mary G. Lassiter '40** of Murray, September 28, 1997.

**Susan Price Carlson '40** of Lake Worth, Fla., April 19, 1998.

**John R. Casner Jr. '43** of Maineville, Ohio, May 31, 1998.

**Jack R. Thompson Jr. '43** of Louisville, June 3, 1998.

**Marian Faulkner McCubbin '44** of Columbus, Ind., April 7, 1997.

**Martha L. Corbin '45** of Cincinnati, Ohio, April 8, 1998.

**Dorothy Word Griffen '45** of Lafayette, La., February 20, 1997.

**Betty Simpson Wheeler '46** of Lexington, October 16, 1998.

**Jean Crabb Gunn '46** of Horse Cave, April 30, 1998.

**Mary Evans Landrum '46** of Louisville, July 4, 1998.

**Earl R. Payne '47** of Cleveland, Ohio, July 6, 1998.

**Robert D. Galvin '48** of Sunnyvale, Calif., May 9, 1997.

**Leon F. Trimble '48** of Hyde Park, N.Y., December 7, 1996.

**Edward R. Supe '49** of Alpine, Calif., August 12, 1998.

**O'Leary M. Meece '49** of Somerset, June 27, 1998.

**Katherine Caldwell '49** of Lexington, May 25, 1998.

**Richard V. Rhoads '49** of Lexington, October 8, 1998.

**Henrietta H. Avent '49** of San Marcos, Texas, January 4, 1998.

**William P. Ringo '49** of Saute Nacoche, Ga., September 10, 1998.

**Harold L. Dodson '50** of Fairfield, Va., June 12, 1998.

**Paul Riddle '50** of Pawleys Island, S.C., September 2, 1998.

**Cassius B. Gravitt Jr. '50** of Lexington, May 14, 1998.

**Keith W. Klein '50** of Simsbury, Conn., June 26, 1998.

**Coleman D. Moberly '50** of London, July 15, 1998.

**Francis M. Crowe '50** of Midway, December 30, 1997.

**Dorman A. McFarland '50** of Georgetown, September 3, 1998.

**Charles W. Noe '50** of Fresno, Calif., March 7, 1998.

**George R. Sherman '50** of Louisville, August 25, 1998.

**William T. Patteson Sr. '51** of Louisville, October 10, 1997.

**Warren N. Albright '51** of Birmingham, Ala., May 26, 1998.

**Donald W. Ivey '51** of Lexington, June 19, 1998.

**William d. Stephens '51** of Harlingen, Texas, January 9, 1998.

**Henry E. Cox '52** of Lexington, April 28, 1998.

**Laura Phillips Gilbert '54** of Fort Pierce, Fla., April 21, 1998.

**Grady E. Hundley '55** of Elizabethtown, September 24, 1997.

**Jack B. Hall '55** of Lexington, June 28, 1998.

**Irvin Hudgins Jr. '57** of Valley Station, September 24, 1998.

**Nelson Gay '59** of Lexington, October 17, 1998.

**Henry C. Rose '59** of Campton, June 30, 1998.

**Dora Lee Balden '60** of Highland, Ind., October 16, 1998.

**Martin V. Hutson '60** of Lexington, August 13, 1998.

**Lee Bramlage Hicks '65** of Bardstown, May 2, 1997.

**Kirk I. Phelps '65** of Lancaster, July 26, 1998.

**Jane B. McClurkan '65** of San Antonio, Texas, May 23, 1998.

**Donald S. Muir '65** of Paducah, July 21, 1998.

**Robert F. Trevey '70** of Lexington, October 20, 1998.

**Rebecca A. Charton '72** of Baltimore, Md., December 16, 1996.

**Margaret Williams Carnes '72** of Jamestown, January 15, 1996.

**Patrick m. Prosser '73** of Indianapolis, Ind., June 6, 1998.

**James W. Davidson II '78** of Somerset, September 20, 1998.

**Marshall E. Farley '80** of St. Petersburg, Fla., June 2, 1998.

**Kimberly H. Armes '83** of Hardinsburg, December 12, 1996.

**Don E. Hoosier '83** of Franklin, Tennessee, July 21, 1998.

**Joel C. Morgan '85** of Lexington, August 9, 1998.

**Anthony T. Noble '88** of Jackson, September 12, 1998.

**Carole Perry Short '93** of Russell, August 5, 1998.

**Earl R. Bailey of Hazard**, January 7, 1998.

**Barbara Cable Bronaugh** of Lexington, June 9, 1998.

**Wilma True Fulton** of Lexington, October 21, 1998.

**Glenn A. Harney** of Paris, September 3, 1998.

**Charles R. Perry** of Frankfort, October 22, 1996.

**Cleo Davis Truitt** of Lexington, July 31, 1998.

# UNIVERSITY OF KENTUCKY ALUMNI ASSOCIATION

## UNIVERSITY OF KENTUCKY ALUMNI ASSOCIATION

### Board of Directors

Current Association Officers

**Pickard, Robert F.**, president 615-370-4747

**Miller, Robert E.**, president elect 606-744-0240

**Patterson, Sandy Bugie**, treasurer 606-441-5810

**Key, Stan**, secretary 606-257-8905



### Elected Members of the Alumni Association Board of Directors

#### District 1

*Kentucky counties of Ballard, Caldwell, Calloway, Carlisle, Christian, Crittenden, Fulton, Graves, Henderson, Hickman, Hopkins, Livingston, Lyons, Marshall, McCracken, Todd, Trigg, Union and Webster.*

Corum, William, Madisonville 502-821-7221  
Cardwell, Susan B., Fulton 502-472-2650  
Skinner, J. Tim, Henderson 502-826-6441

#### District 2

*Kentucky counties of Adair, Allen, Barren, Breckinridge, Bullitt, Butler, Clinton, Cumberland, Daviess, Edmonson, Grayson, Green, Hancock, Hardin, Hart, Larue, Logan, Marion, McLean, Meade, Metcalfe, Monroe, Muhlenberg, Ohio, Simpson, Taylor and Warren.*

Clark, Sally Towles, Russellville 502-726-8627  
Moore, Jr., Charles M. Bowling Green 502-843-4486  
Moseley, David W., Owensboro 502-683-6889

#### District 3

*Kentucky counties of Jefferson and Oldham.*

Abbott, Daniel L., Louisville 502-895-1407  
Blythe, Janice, Louisville 502-895-0281  
Farris, Jr., Frank H., Louisville 502-893-0053  
Mountjoy, Susan P., Louisville 502-897-2959  
Ochs, George A., Anchorage 502-245-9878  
Ratterman, David B., Louisville 502-456-4478

#### District 4

*Kentucky counties of Anderson, Boyle, Clark, Jessamine, Madison, Mercer, Nelson, Spencer, Washington and Woodford.*

Springate, Elizabeth H., Harrodsburg 606-734-7562  
Yates, Bobbi Jo, Harrodsburg 606-734-3879

#### District 5

*Kentucky county of Fayette.*

Collins, John W., Lexington 606-269-3048  
Gravens, Gene, Lexington 606-272-2244  
Haggin, Mary Wis, Lexington 606-269-1179  
Hurst, R. L. "Dick", Lexington 606-269-6087

Pope, Paula Leach, Lexington 606-268-0307  
Ramsey, Derrick K., Lexington 606-299-1039  
Humphrey Jr., James E., Lexington 606-266-9555  
Ward, Robert C., Lexington 606-255-6031

#### District 6

*Kentucky counties of Carroll, Franklin, Henry, Owen, Scott, Shelby and Trimble.*

Armstrong, Donald L., Frankfort 502-227-4297  
Clayton, John O., Shelby County 502-241-7474  
Downing, Frank K., Owenton 502-484-3037

#### District 7

*Kentucky counties of Boone, Bourbon, Bracken, Campbell, Gallatin, Grant, Harrison, Kenton, Nicholas and Pendleton.*

Yelton, Mark A., Wilder 606-442-0094  
Patterson, Sandy Bugie, Ft. Thomas 606-441-5810  
Rogers, M. Vaughn, Union 606-384-9019

#### District 8

*Kentucky counties of Bath, Boyd, Carter, Elliott, Fleming, Floyd, Greenup, Johnson, Lawrence, Lewis, Magoffin, Martin, Mason, Menifee, Montgomery, Morgan, Pike, Powell, Robertson, Rowan and Wolfe.*

Christian, Michael A., Ashland 606-329-1457  
McKenzie, Janie C., Prestonsburg 606-789-3946

#### District 9

*Kentucky counties of Bell, Breathitt, Casey, Clay, Estill, Garrard, Harlan, Jackson, Knott, Knox, Laurel, Lee, Leslie, Letcher, Lincoln, McCreary, Owsley, Perry, Pulaski, Rockcastle, Russell, Wayne and Whitley.*

Haney, Ann Brand, Nancy 606-636-6161  
Prather, Joelyn, Somerset 606-679-5782  
Saufley, H. R., Stanford 606-365-2793

#### District 10

*States of Connecticut, Delaware, Maine, Massachusetts, New Hampshire, New Jersey, New York, Pennsylvania, Rhode Island, Vermont, West Virginia and foreign addresses.*

Frye, Linda Lyon, Lock Haven, Penn. 717-769-7375  
Munro, William R., Huntington, W. Va. 304-736-8549  
Purnell, Charles K., Scarsdale, N.Y. 914-725-8610

#### District 11

*States of Maryland, North Carolina, South Carolina, Virginia and District of Columbia.*

Duff, James C., Bethesda, Md. 301-229-1336  
Glass, Marie, Falls Church, Va. 703-256-1165  
Small, Sharon Stevens, Richmond, Va. 804-741-3496

#### District 12

*States of Georgia and Florida.*

Vogt, James, Naples, Fla. 941-591-4514  
Miller, H. Johnnie, Woodstock, Ga. 770-591-9361  
Shelton, David L., Marietta, Ga. 770-977-9285

#### District 13

*States of Alabama, Arkansas, Louisiana, Mississippi and Tennessee.*

Bryant, James B., Birmingham, Ala. 205-967-7393  
Harden, Bob, Franklin, Tenn. 615-591-9176  
Friedrich, W. P. (Pete), Birmingham, Ala. 205-991-3058

#### District 14

*States of Ohio and Michigan.*

Collins, Kevin, Mason, Ohio 513-398-8266  
Letton, Barbara, Dayton, Ohio 937-298-5528  
Wittich, Scott, Powell, Ohio 614-848-4137

#### District 15

*States of Illinois, Indiana, Iowa, Kansas, Minnesota, Missouri, Nebraska and Wisconsin.*

Harlow, Sandra W., Indianapolis, Ind. 317-852-7099  
Talley, Howard, Florissant, Mo. 314-921-3433  
Wallis, Marsha R., Indianapolis, Ind. 317-898-1606

# UNIVERSITY OF KENTUCKY ALUMNI ASSOCIATION

## District 16

All other states.

Hamilton, Pamela J.,  
Denver, Colo. 303-744-9195  
Sparks, Daniel L.,  
Houston, Texas 281-893-5363  
Ferguson, Ellen, Euless, Texas 817-283-7169

### Appointed Members of the Alumni Association Board of Directors

Flaucher, John T., Franklin, Tenn. 615-794-3649  
Massie, Diane, Chicago, Ill. 773-528-6198  
Pickard, Jean,  
Brentwood, Tenn. 615-370-4747

### Past National Presidents

Atkins, Jr., George L.	Nichols II, John C.
Bates, Ted	Nickell, J. Paul
Bean, Richard A.	Nutter, Ervin J.
Beebe, Jr., Morris	Owens, John C.
Burleson, Michael	Ravencraft, G. David
Cooper, Richard E.	Spragens, T.E. "Gene"
Crockett, John R.	Stuckert, James W.
Davis, Bruce K.	Tackett, Julia K.
Denham, Harry C.	Thompson, Hank
Edge, Marianne Smith	Tobin, Myra Leigh
Fenwick, Paul E.	Tucker, J. Thomas
Francis, William G.	Uzzle, William T.
Gipson, Dan	Wilhoit, Jr., Henry R.
Guthrie, John R.	Womack, Richard M.
Hillenmeyer, Robert H.	

### Alumni Representatives to UK Board of Trustees

Bates, Ted, Lexington 606-266-7639  
Guthrie, Jack, Louisville 502-895-4461  
Sims, Marian Moore, Lexington 606-268-4365

### Ex Officio Members

Burch, Joseph T.,  
VP university relations 606-257-7400  
Cornish, Guy,  
Lexington CC representative 606-223-2389  
Daugherty, William B.,  
Dentistry representative 606-223-4780  
Harrelson, Lynn,  
Pharmacy representative 502-425-8642  
Brashear, Robert S.,  
Engineering representative 606-737-0235  
Moats, Bob, SCC representative 606-623-7056  
Mobley, Terry,  
Chief development officer 606-257-3912  
Newton, C.M.,  
Athletics Assoc. representative 606-257-8000  
Norment, Betty,  
Henderson CC representative 502-827-9028  
Oppmann, Andrew E.,  
Journalism representative 334-264-0462  
Tufts, Karen K.,  
Nursing representative 606-266-2294

### Honorary Life Members

Brumfield, E. Jay  
Morris, Jane I.  
Whitaker, Bob

## University of Kentucky Alumni Association Club Presidents and Affiliate Groups

### ALABAMA

*Birmingham*  
Pete Friedrich 3601  
205-991-3058  
*Northern Alabama*  
Lovena Spencer  
205-233-7004

### CALIFORNIA

*Northern California*  
Mary Ayers  
510-531-6550  
*Southern California*  
Mark Chadwick  
909-597-9558

### DISTRICT OF COLUMBIA

*Washington D.C.*  
Charles A Van Lahr, III  
703-802-3127

### FLORIDA

*Naples-Ft. Myers*  
N. Powell Taylor  
941-262-3002 (Naples)  
502-425-4724 (Louisville)  
*Orlando-Central Florida*  
H. Castle Thompson  
407-869-5568 fax  
*Tampa Bay*  
Katherine Tabor  
813-962-8260

### GEORGIA

*Atlanta*  
Ted Gum  
770-552-9061

### ILLINOIS

*Chicago*  
Diane Massie  
773-528-6198

### INDIANA

*Indianapolis-Central  
Indiana*  
Sandra Harlow  
317-852-7099  
*Michiana*  
Patricia Beckman  
219-277-6598

### KENTUCKY

*Anderson County*  
Charlotte Vaughn  
502-839-8684  
*Asbland-Boyd County*  
Leslie A. Walters  
606-329-0926  
*Barren River*  
Baret Lessenberry  
502-651-7565

### Big Sandy

Janie McKenzie  
606-789-3946  
*Bourbon-Nicholas  
Counties*  
Proctor Blair  
606-263-0146  
*Christian County*  
Donna Kranz  
502-522-1126

### Clark County

Cammie Grant  
606-744-6126  
*Cumberland Valley East*  
Kathy Guyn  
606-573-1082  
*Cumberland Valley West*  
James D. (Danny )  
Norvell

### Danville-Boyle County

Dick McGuire  
606-236-5799  
*Daviess County*  
Bradley J McDonough  
502-685-4490  
*Fayette County*  
Larry Elliott  
606/266-7502  
*Franklin County*  
David L. Weller  
502-695-6039  
*Fulton County*  
James Hal Warren  
502-472-2731  
*Hardin County*  
Joe Goodman  
502-765-7241  
*Harrison/Pendleton  
Counties*  
Terry McMichael  
606-234-1284  
*Hazard-Kentucky River*  
Craig Hall  
606-439-2194  
*Henderson County*  
David Hatchett  
502-827-4502  
*Hopkins County*  
Kent Mills  
502-821-7434  
*Jefferson County*  
Bill Schuetze  
502-451-1464  
*Lake Cumberland*  
Elaine A. Wilson  
606-679-4155  
*Lawrence County*  
Ty McCreary  
606-638-0725  
*Mason County*  
Helen Ann Mains  
606-564-5104

### McCracken County

Gary Gay  
502-554-1204  
*Mercer County*  
Bobbi Jo Yates  
606-734-3879  
*Montgomery County*  
Ron D. Catchen  
606-498-0741  
*Northern Kentucky*  
Brenda Gosney  
606-635-4742  
*Owen County*  
Cathy Jansen  
606-643-2521  
*Russell County*  
Clifford Wilson  
502-866-3665  
*Shelby County*  
Peggy Catlett  
502-633-2994  
*Southcentral  
Kentucky*  
Charles E. Lancaster  
502-692-6893  
*Warren County*  
H. Harris Pepper, Jr.  
502-842-2676

### TEXAS

*Dallas/Ft. Worth*  
Cheryl Feigel  
817-485-7868  
*Houston*  
Marie Hartley  
281-376-6437

### VIRGINIA

*Central Virginia*  
Becky Walker  
804-784-0082

### AFFILIATE GROUPS

*College of Dentistry*  
William B. Daugherty  
606-268-1190  
*Henderson  
Community College*  
Betty Norment  
502-827-9028  
*Lexington Commu-  
nity College*  
Guy Cornish  
606-243-8219  
*College of Nursing*  
Karen Tufts  
606-266-2294  
*College of Social Work*  
TBA—Alumni Affairs  
Representative  
*School of Journalism*  
Andrew J Oppmann  
606/647-7521  
*Southwest Community  
College*  
Christopher Jones  
606/589-2145

### MISSOURI

*St. Louis*  
James C. Harris  
314-519-9444

### OHIO

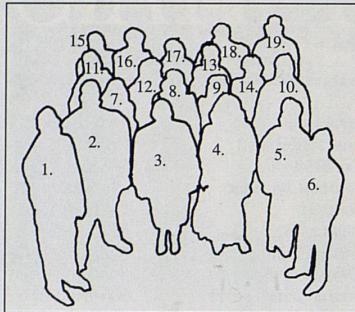
*Central Ohio*  
Mary Anne Crawford  
614-878-4247  
*Cincinnati*  
Paul Helton  
606-356-4882  
*Dayton*  
David Rodgers  
937-426-5470  
*Northeast Ohio*  
Monica Matia  
216-491-0899  
*Northwest Ohio*  
Craig Wallace  
419-421-2705

### TENNESSEE

*Chattanooga*  
Jane Cobb Pickering  
706-820-2946  
*Memphis*  
Randall Roper  
901- 755-9849  
*Nashville*  
Bob Harden  
615-591-9176  
*West Tennessee*  
Sam D. Helm  
901-285-0027

UNIVERSITY OF KENTUCKY  
ALUMNI ASSOCIATION

1. Key, Stan
2. Lucas, Matt
3. Demoran, Liz
4. Haendiges, Beth
5. Johnson, Kay
6. Hoagland, John
7. Long, Mandy
8. Seideman, Sarah
9. Lisa Martin
10. Livingston, Charles
11. Coomer, Nancy
12. Zuhars, Lee
13. Harper, Susan
14. Collins, Peggy
15. Bain, Brenda
16. Brumfield, Linda
17. Rhorer, Carolyn
18. Simpson, Darlene
19. King, Will



**Alumni Association Staff**  
Area Code: 606 Fax: 323-1063

Key, Stan  
Director  
257-8907  
srkey1@pop.uky.edu

Demoran, Liz  
Associate Director  
257-7164  
uadlizxa@pop.uky.edu

Lucas, Matt  
Associate Director  
257-8906  
mluca2@pop.uky.edu

Bain, Brenda  
Records  
257-1032  
bsbain1@pop.uky.edu

Brumfield, Linda  
Records  
323-1041  
lcbum1@pop.uky.edu

Collins, Peggy  
Membership Marketing  
257-8700  
phcoll2@pop.uky.edu

Coomer, Nancy  
Accounts Payable  
257-7165  
nlcoom0@pop.uky.edu

Haendiges, Beth  
Affiliate groups, Special  
Events  
257-1499  
emhaen0@pop.uky.edu

Harper, Susan  
Clubs/Pre-game activities  
257-8700  
sfharp0@pop.uky.edu

Hoagland, John  
Computer System/Reports  
257-8950  
jwhoag00@pop.uky.edu

Johnson, Kay  
Publications  
257-1478  
kjohn1@pop.uky.edu

King, Will  
Web Page  
323-3853  
wpling0@pop.uky.edu

Livingston, Charles  
Custodian  
257-6250  
cliving@pop.uky.edu

Long, Mandy  
Travel/Stan's Assistant  
257-7162  
awlong00@pop.uky.edu

Rhorer, Carolyn  
Records  
257-8800  
crhor1@pop.uky.edu

Seideman, Sarah  
Receptionist  
257-8905  
msseid0@pop.uky.edu

Simpson, Darlene  
Dues  
323-3851  
dsimp2@pop.uky.edu

Zuhars, Lee  
Club mailings/Tickets  
257-7161  
lazuha2@pop.uky.edu



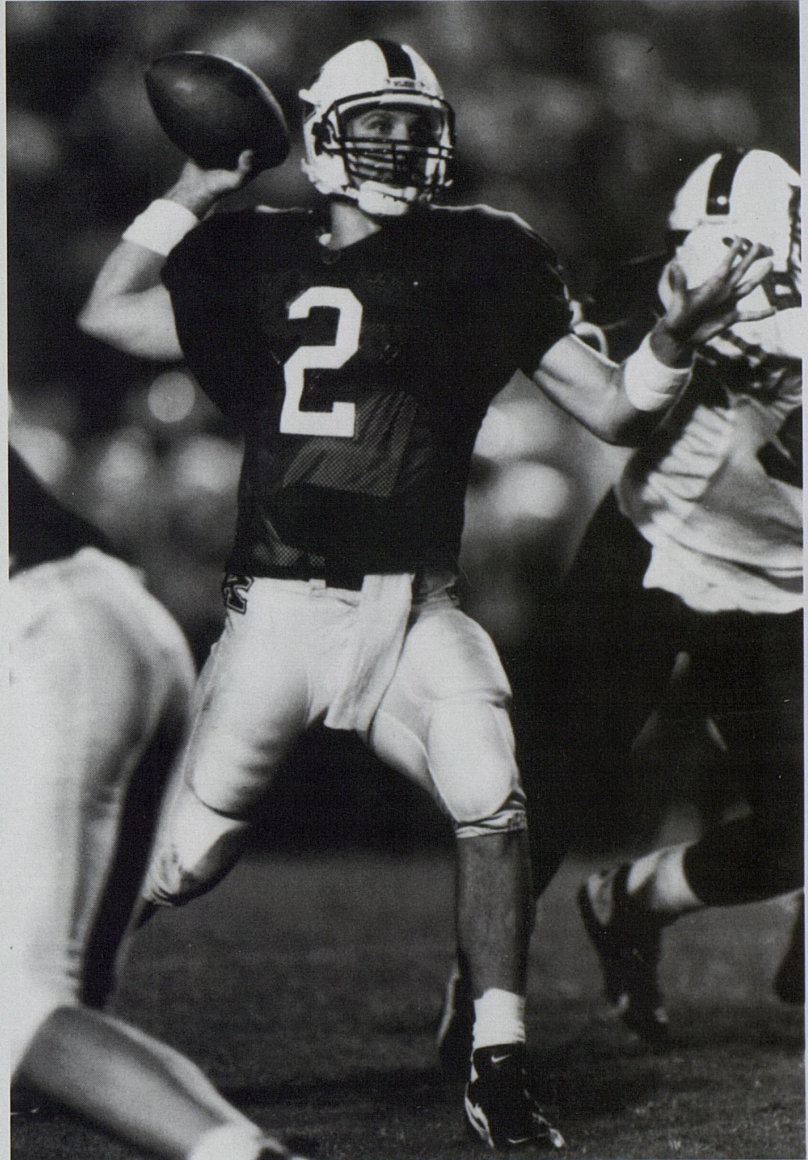
6-5, 225, Jr-3L  
Hyden, Ky.  
(Leslie County High School)

### The Record

In just 29 games, Couch set four NCAA records, 14 Southeastern Conference records and 26 school records eclipsing UK's previous venerable quarterback Babe Parilli in several categories.

- First team All-America by the Football Writers Association of America and the Walter Camp Football Foundation (1998)
- Second team All-America by Football News, Associated Press (1998)
- Finalist for the Heisman Trophy (1998, finishing fourth in balloting)
- Finalist for the Player of the Year Award by the Walter Camp Football Foundation (1998)
- Finalist for the Offensive Player of the Year Award by the Football News (1998)
- Finalist for the Davey O'Brien National Quarterback Award (1998)
- SEC Player of the Year by the Associated Press, SEC Coaches, Football News, Birmingham News and Jefferson-Pilot Sports (1998)
- First team All-SEC by the Associated Press, SEC Coaches, Football News, Birmingham News (1998)
- National Offensive Player of the Week for the Louisville game by the College Sports News internet service (1998)
- National Player of the Week by USA Today Online and SEC Offensive Player of the Week by the SEC office for the Louisiana State game (1998)
- Compaq Most Inspirational Play of the Week in College Football for the Mississippi State game (1998)

## Quarterback Tim Couch



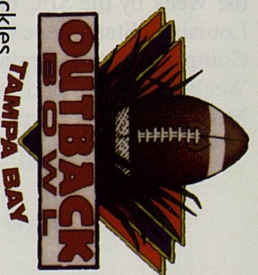
"There have been only a few players during my 40 years of covering SEC football that were so exciting, so remarkable that when their team is on the road, the other guy notices an increased demand for tickets just because the fans want to be able to tell their children they saw such-and-such play football when this great player's team came to their school.

"Tell me to name five, the most awaited visiting players within memory, and I would list Herschel Walker of Georgia, Archie Manning of Ole Miss, Bo Jackson of Auburn, Billy Cannon of LSU, and add the name Tim Couch of Kentucky."

—Stan Torgerson, veteran newspaper columnist and chairman of the Heisman Trophy voting delegation for Mississippi

# Focus 1-1-99: Cats cap off 7-4 season with New Year's Day Bowl Game!

Quarterback Tim Couch sets more records as he plays last game for Big Blue. Jeff Zurcher '98 leads team in bowl game tackles.



Outback restaurant founder and alumnus Chris Sullivan '72 welcomes Kentucky.

Nearly 40,000 cheer UK at stadium in Tampa. Score: UK 14 Penn State 26.