

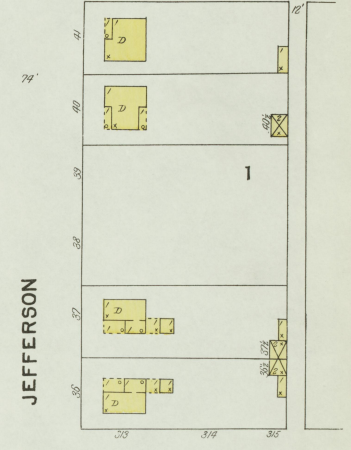
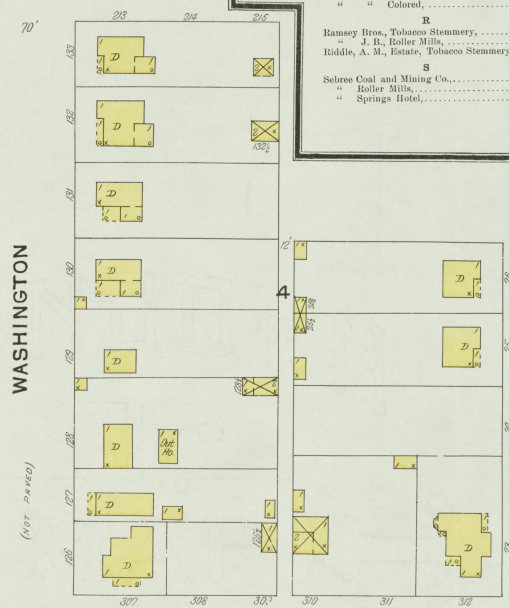
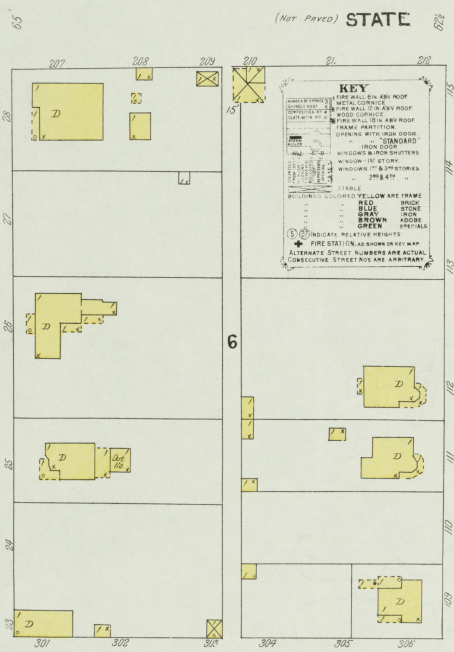
WATER FACILITIES: NOT GOOD. PRIVATE WELLS & CISTERNS.  
 FIRE DEPARTMENT: VOLUNTEER, 12 MIN. TO REACH. EACH BLOCK 1 1/4 MILE. 1 ENGINE, 2 WAGONS & CHEMICAL ENGINE (HIDE-FEET) & ONE 1/2 TON PUMP.  
 STREETS NOT PAVED. LIGHTS: OLIVE. PAUL WOOD & CO.

THIS COUNTY OF...  
 The Census of 1900  
 DEC 5 1903  
 POPULATION  
 49,350  
 14,930  
 (City)

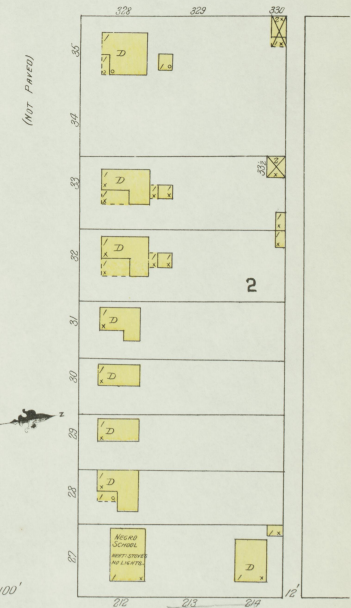
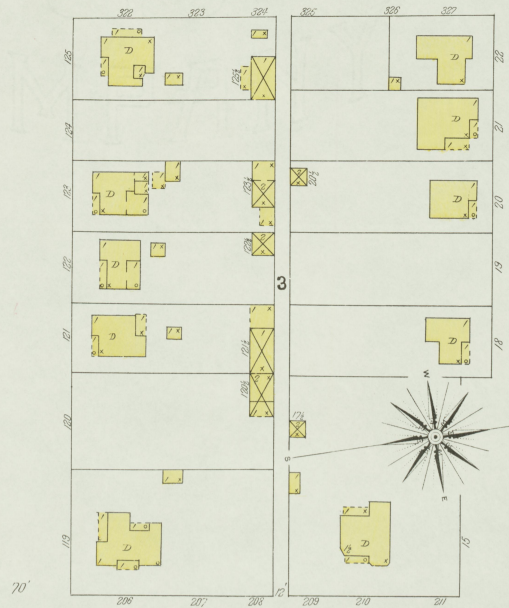
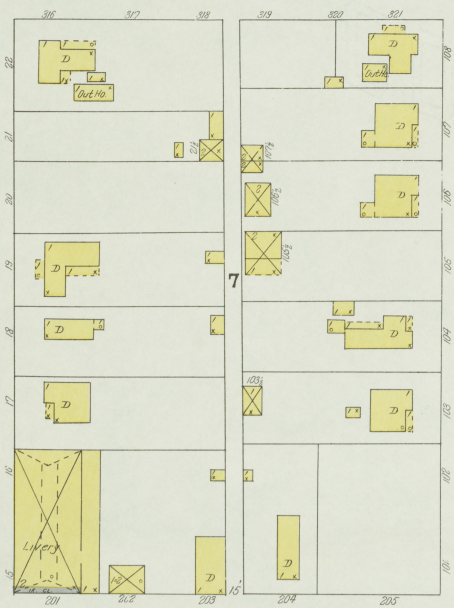


**INDEX.**  
**SPECIALS.**

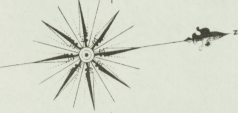
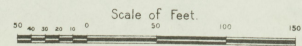
- B**
- Baptist Church, Colored ..... 3
  - Bryant & King Tobacco Stemmy ..... 3
  - Burreve, D. J., & Co., Tobacco Stemmy, 1
- C**
- Central Hotel ..... 2
  - Christian Church ..... 3
  - Court House ..... 2
- F**
- First National Hotel ..... 2
- M**
- McEwen, A., Tobacco Stemmy ..... 3
  - McMullen & Orsburn, Planing Mill, ..... 3
- O**
- Opera House ..... 2
- P**
- Powell, J. A., Tobacco Stemmy, ..... 2
  - Public School ..... 1
  - Colored, 1
- R**
- Ramsey Bros., Tobacco Stemmy, ..... 3
  - J. B., Roller Mills, ..... 3
  - Riddle, A. M., Estate, Tobacco Stemmy, ..... 3
- S**
- Sebree Coal and Mining Co., ..... 3
  - Roller Mills, ..... 3
  - Springs Hotel, ..... 3



**CHURCH (NOT PAVED)**



**SPRING (NOT PAVED)**



OCT. 1903  
**SEBREE**  
KY.

