

WATER FACILITIES: -
River & private wells, no water works

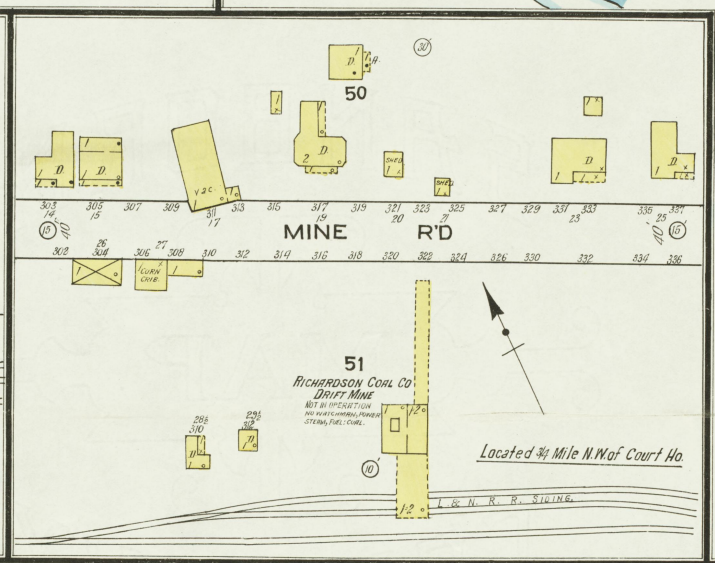
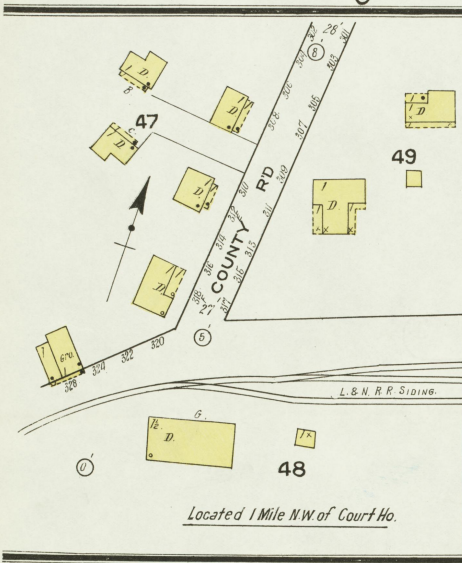
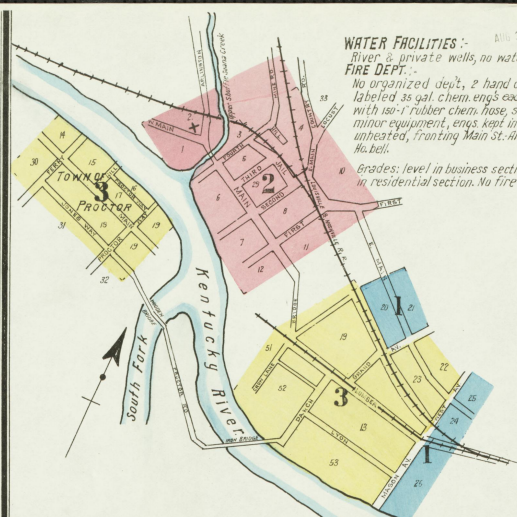
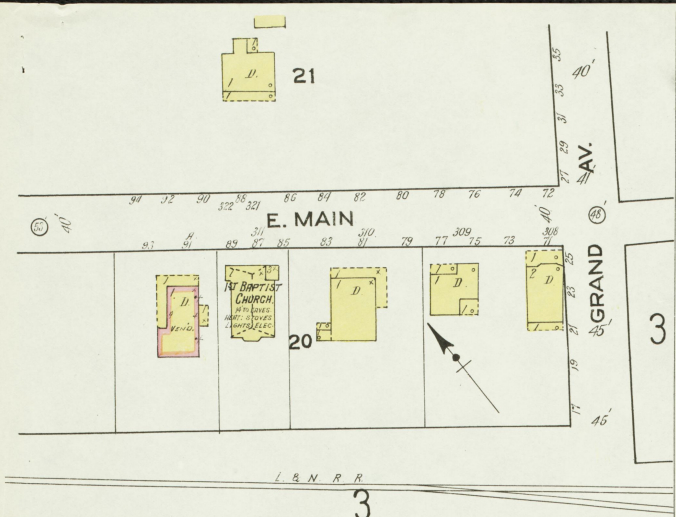
FIRE DEPT.: -
No organized dept., 2 hand drawn labeled as gas. Chem. engs. each equipped with iso-1 rubber chem. hose, small amount minor equipment, engs. kept in frame bus unheated, fronting Main St. Alarm Court No. 101.

Grades: level in business section, moderate to heavy in residential section. No Fire limits.



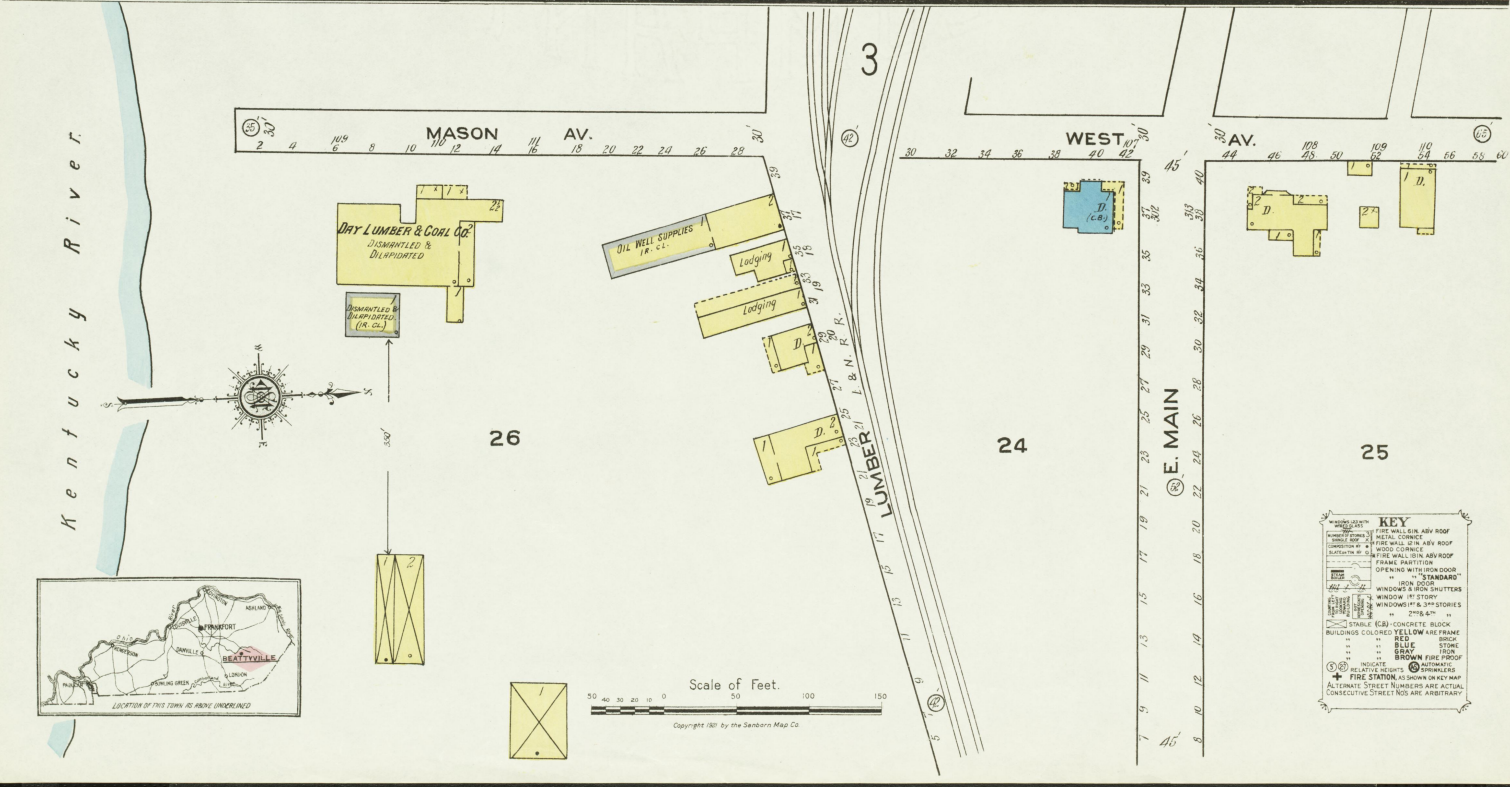
© O. F. J. S. 89

SURVEYED BY
KENTUCKY ACTUARIAL BUREAU



INDEX

SPECIALS	HEET
American Express Office,	3
Christian Church,	2
Coomer Hotel,	3
County Court House and Jail,	2
Day Lumber and Coal Co.,	3
Electric Light Plant,	1
Fire Department,	2
First Baptist Church,	1
Jones Hotel,	2
L. & N. R. R. Depot,	3
Post Office,	2
Presbyterian Church,	3
Public School,	3
at Proctor,	3
Richardson Coal Co., Drift Mine,	1
St. Catherine Hotel,	3
Thomas Episcopal Church,	2

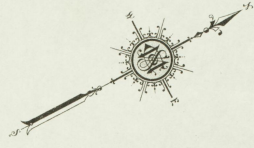


KEY

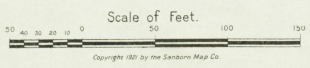
- DRY LUMBER & COAL CO. DISMANTLED & DILAPIDATED
- DISMANTLED & DILAPIDATED (IN CL.)
- FRAME BRITISH
- OPENING WITH IRON DOOR
- "STANDARD"
- WINDOOR & IRON SHUTTERS
- WINDOW 1ST STORY
- WINDOWS IN 2ND STORIES
- 27 1/2"
- STABLE (ES) CONCRETE BLOCK
- BUILDINGS COLORED YELLOW FRAME
- RED
- BLUE
- STONE
- BROWN
- IRON DOOR
- IRON SHUTTERS
- INDICATE RELATIVE HEIGHTS
- INDICATE AIRWAYS
- FIRE STATION, AS SHOWN ON KEY MAP
- ALTERNATE STREET NUMBERS ARE ACTUAL
- CONSECUTIVE STREET NOS ARE ARBITRARY

Scale of Feet.
0 50 100 150

Copyright 1921 by the Sanborn Map Co.

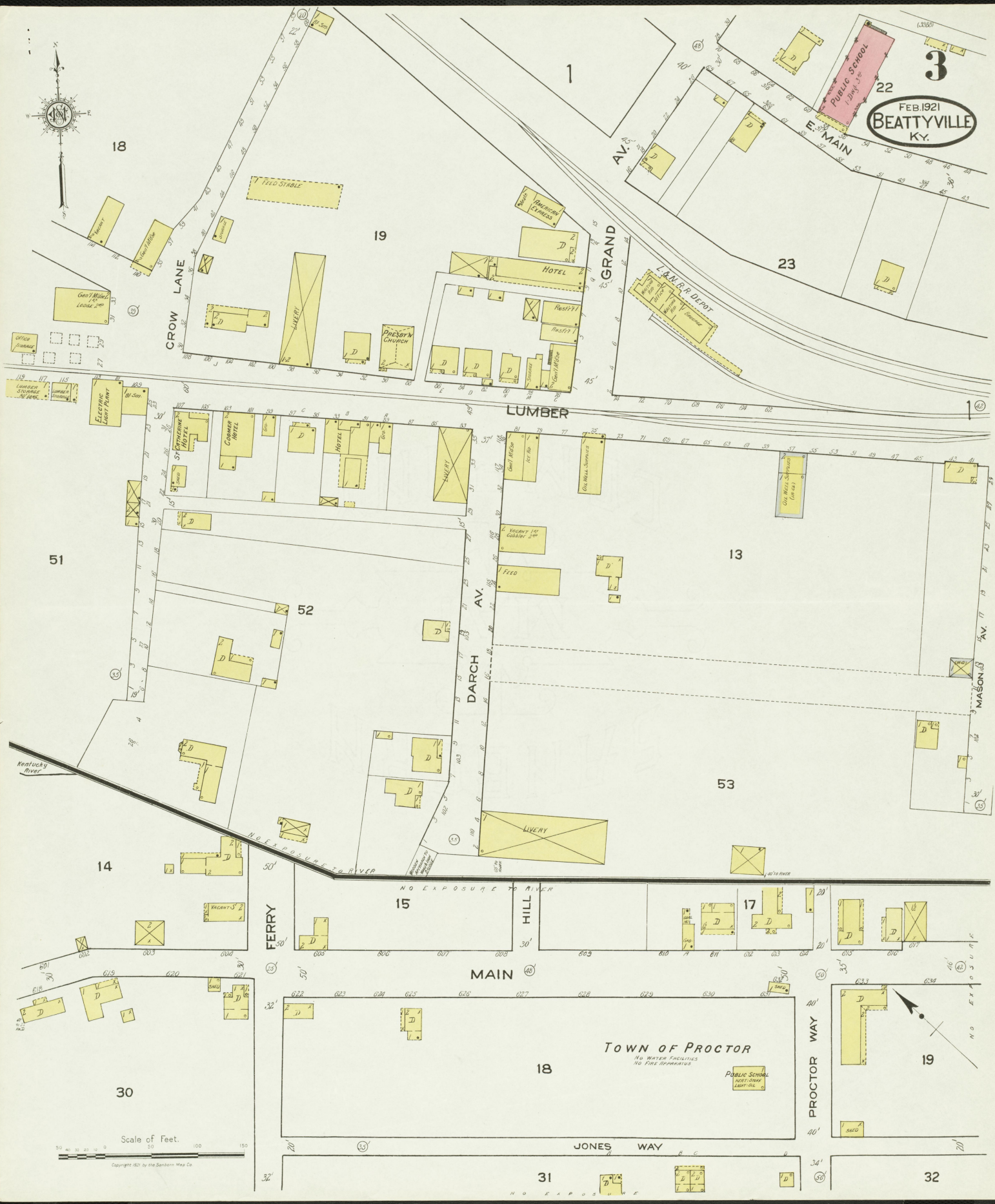


Kentucky River





FEB. 1921
BEATTYVILLE
KY.



Scale of Feet.
0 50 100 150
Copyright 1921 by the Sanborn Map Co.