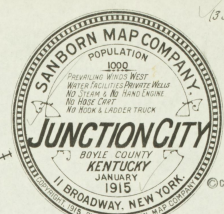




KEY

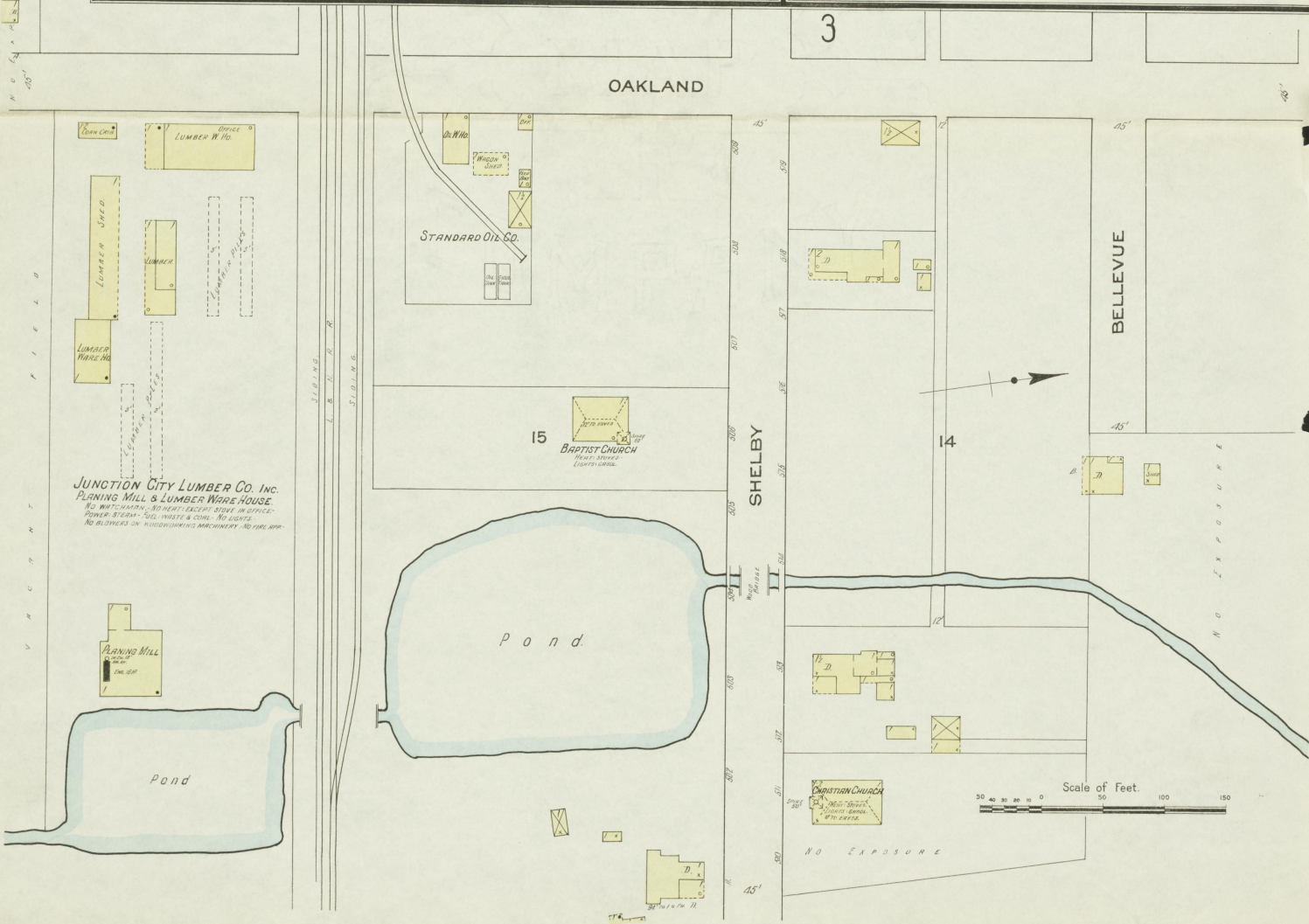
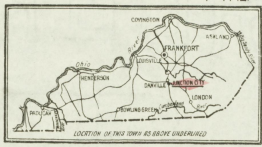
FRAMES & SILLING WITH ROOF	FRAMES & SILLING WITH ROOF
FRAMES & SILLING WITH ROOF	FRAMES & SILLING WITH ROOF
FRAMES & SILLING WITH ROOF	FRAMES & SILLING WITH ROOF
FRAMES & SILLING WITH ROOF	FRAMES & SILLING WITH ROOF
FRAMES & SILLING WITH ROOF	FRAMES & SILLING WITH ROOF
FRAMES & SILLING WITH ROOF	FRAMES & SILLING WITH ROOF
FRAMES & SILLING WITH ROOF	FRAMES & SILLING WITH ROOF
FRAMES & SILLING WITH ROOF	FRAMES & SILLING WITH ROOF
FRAMES & SILLING WITH ROOF	FRAMES & SILLING WITH ROOF
FRAMES & SILLING WITH ROOF	FRAMES & SILLING WITH ROOF
FRAMES & SILLING WITH ROOF	FRAMES & SILLING WITH ROOF
FRAMES & SILLING WITH ROOF	FRAMES & SILLING WITH ROOF
FRAMES & SILLING WITH ROOF	FRAMES & SILLING WITH ROOF
FRAMES & SILLING WITH ROOF	FRAMES & SILLING WITH ROOF
FRAMES & SILLING WITH ROOF	FRAMES & SILLING WITH ROOF
FRAMES & SILLING WITH ROOF	FRAMES & SILLING WITH ROOF
FRAMES & SILLING WITH ROOF	FRAMES & SILLING WITH ROOF
FRAMES & SILLING WITH ROOF	FRAMES & SILLING WITH ROOF
FRAMES & SILLING WITH ROOF	FRAMES & SILLING WITH ROOF
FRAMES & SILLING WITH ROOF	FRAMES & SILLING WITH ROOF
FRAMES & SILLING WITH ROOF	FRAMES & SILLING WITH ROOF
FRAMES & SILLING WITH ROOF	FRAMES & SILLING WITH ROOF



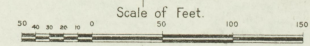
Water Facilities: Private wells.
 Fire Dept: None - No fire alarm system
 Grades level - Streets: not paved & in bad condition - No public lights -
 No fire limits

INDEX

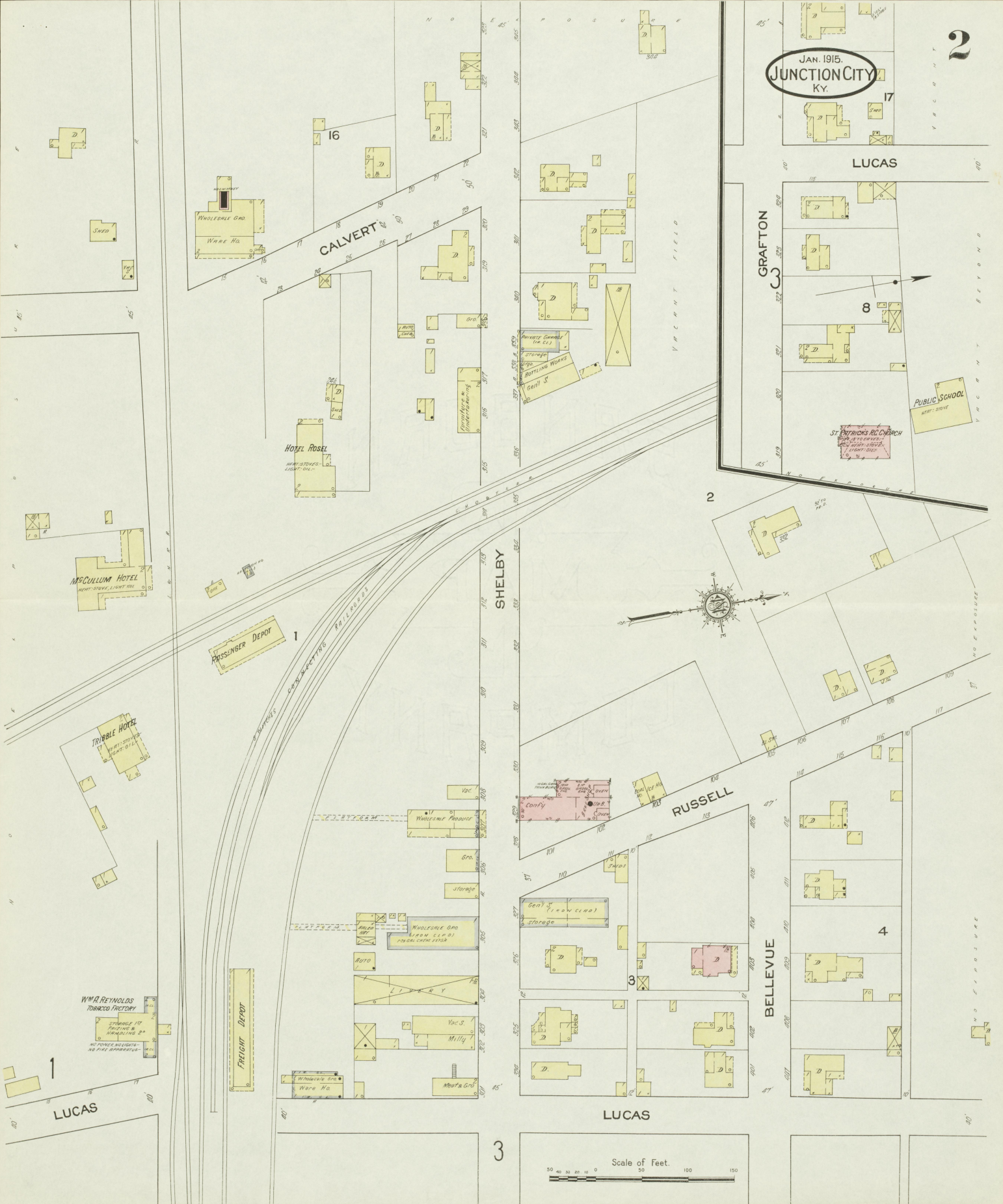
BUILDING	SECT	BLK	BLK
Baptist Church	B	1	R
Christian Church	C	1	S
C. N. O. & T. P. R. R. Depots	C	2	T
Hotel Rosel	H	2	2
Junction City Lumber Co.	J	1	R
McCullum Hotel	M	2	S
Methodist Church	M	3	T
Post Office	P	2	2
Presbyterian Church	P	3	2
Public School	P	3	2
Reynolds, W.A., Tobacco Factory	R	1	2
Standard Oil Co.	S	1	1
St. Patrick's R. C. Church	S	2	2
Tribble Hotel	T	2	2



JUNCTION CITY LUMBER CO. INC.
 PLANING MILL & LUMBER WAREHOUSE
 NO HOT-HEATING, NO WASTE RECEPTOR, NO OFFICE
 POWER STEAM - GAS, WASTE & COIL - NO LIGHTS
 NO STORAGE IN BUILDINGS OR MACHINERY - NO FIRE HAZ.



Jan. 1915.
JUNCTION CITY
KY.



LUCAS

GRAFTON

8

PUBLIC SCHOOL

ST. PATRICK'S R.C. CHURCH

2

SHELBY



RUSSELL

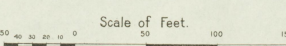
BELLEVUE

4

LUCAS

LUCAS

3



1

3

2

LUCAS

JAN. 1915
JUNCTION CITY
KY.

HILL

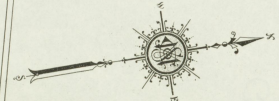
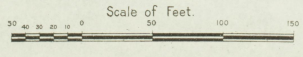
BELLEVUE

KINDALL

OAKLAND

SHELBY

GRAFTON



L. A. B. P. P. (STREET)

N. O. E. X. P. O. S. U. R. Y.