

12083

Vol. 29

No. 8

1961

Key 1

Commonwealth of Kentucky

EDUCATIONAL BULLETIN

KENTUCKY HIGH SCHOOLS

1960-61



Published by
DEPARTMENT OF EDUCATION
WENDELL P. BUTLER
Superintendent of Public Instruction
Frankfort, Kentucky

ISSUED MONTHLY

Entered as second-class matter March 21, 1933, at the post office at Frankfort, Kentucky, under the Act of August 24, 1912.

POSTMASTER: SEND NOTICES OF
CHANGES OF ADDRESS ON FORM 3579

VOL. XXIX

AUGUST, 1961

NO. 8

LIBRARY
UNIVERSITY OF KENTUCKY

Commonwealth of Kentucky
EDUCATIONAL BULLETIN

KENTUCKY HIGH SCHOOLS

1959-60



Published by
DEPARTMENT OF EDUCATION
COMMONWEALTH OF KENTUCKY
COLUMBIA, KENTUCKY

VOLUME 120 AUGUST 1959 NO. 8

Instr
prese
secon
appr

as i
stan
the
mini
mad
whic
Add
each
tuni
inst
gran

been
in t
nel.
the
for

FOREWORD

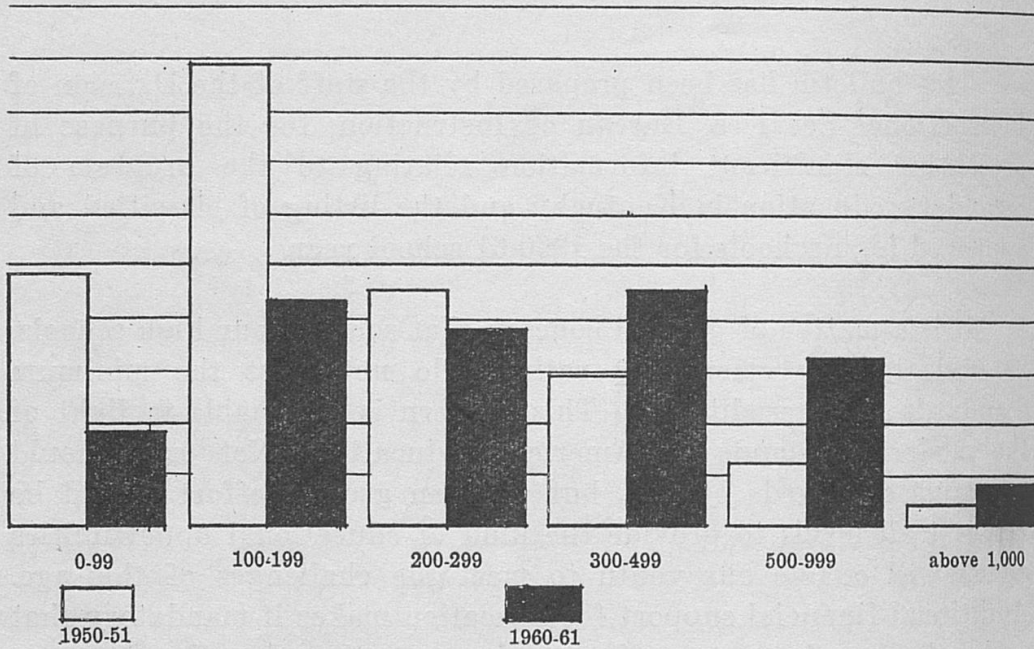
This bulletin has been prepared by the staff of the Division of Instructional Services, Bureau of Instruction, for the purpose of presenting significant information relating to the program of secondary education in Kentucky and the listing of classified and approved high schools for the 1960-61 school year.

It is a matter of general concern that some of our high schools, as indicated by emergency ratings, do not meet the minimum standards for accreditation. This concern is justifiable in light of the modern demands on American Education. Not only should minimum standards be met, but an even greater effort should be made at all levels to provide the kind of educational opportunities which will enable our youth to meet the challenges of this age. Additional financial support for education makes it mandatory that each school make every effort to improve the educational opportunities available for students. Many improvements in quality of instruction are already apparent in our secondary education program.

I acknowledge with much appreciation the efforts that have been put forth in the compilation of the material and data contained in this bulletin both on the part of my staff and local school personnel. It is hoped that the material will be useful to the members of the profession as they strive to improve educational opportunities for the youth of our state.

Wendell P. Butler
Superintendent of Public Instruction

**COMPARISON OF SIZE OF HIGH SCHOOLS
1950-51 — 1960-61**



**DISTRIBUTION OF NUMBER OF HIGH SCHOOLS BY
SIZE 1950-51 — 1960-61 INCLUSIVE**

Year	0-99	100-199	200-299	300-499	500-999	above 1,000
1950-51	120	224	112	74	29	10
1951-52	111	205	131	71	32	11
1952-53	103	194	128	76	37	13
1953-54	87	189	123	85	44	11
1954-55	76	173	124	93	47	13
1955-56	69	160	122	101	52	13
1956-57	60	152	115	97	56	14
1957-58	53	146	100	114	59	16
1958-59	47	129	103	122	61	17
1959-60	48	120	93	124	66	19
1960-61	45	107	95	114	81	20

KENTUCKY HIGH SCHOOLS—1960-61

Kentucky public and private high schools are classified and accredited by the State Board of Education. This requirement is set forth in the law which requires that each school district in the state provide an **approved** twelve-grade school service and that rules and regulations be adopted governing the quality of this service. The law also provides that the "Superintendent of Public Instruction shall annually prepare or cause to be prepared and submit for approval and publication by the State Board of Education a list of all public and private high schools or other secondary schools in the state, showing their classifications." The classifications are given on recommendations of the Bureau of Instruction after consultation with the Commission on Secondary Schools of the Kentucky Association of Colleges, Secondary, and Elementary Schools.

This year, there are 514 public and private high schools in the state. Last year, the number was 527. Of the 514 high schools now operating, 462 are complete organizations in that they offer work through the twelfth grade. Of the 52 incomplete high schools, 44 are separate junior high schools organized as one distinct unit offering work exclusively in grades seven, eight, and nine. The remaining eight high schools are incomplete organizations that offer work only through the ninth, tenth, or eleventh grades.

Of the 462 complete high schools, 273 are operated by county boards of education while 114 are maintained by boards of education in independent school districts. The remaining complete organizations are either private secondary schools or schools that are maintained entirely by the state or federal government.

This year, the six-year high schools (grades seven to twelve) number 141. Last year, they numbered 147. This year, traditional four-year high schools (grades nine to twelve) number 292. Last year, they numbered 292. The remaining twenty-nine complete high school organizations represent modifications of the six-year and the traditional four-year plans.

The following table presents data regarding the various types of high school organizations to be found in the state.

**TABLE I
TYPES OF HIGH SCHOOL ORGANIZATIONS AND NUMBER
OF EACH**

Types of Organizations	County District	Independent District	State, Federal, Regional	Private	Total
Grades 7-12	77	54	6	4	141
Grades 9-12	184	46	1	61	292
Grades 8-12	10	3	0	3	16
Grades 10-12	5	8	0	0	13
Grades thru 11	3	0	0	0	3
Grades thru 10	3	0	1	0	4
Grades thru 9	17	25	1	1	44
Beginning, Gr. 9.....	0	0	0	1	1
Totals	299	136	9	70	514

The above table not only shows the number of different types of high schools that are found in the state, but also indicates the number of such schools that operate under different types of control.

**TABLE II
HIGH SCHOOL ENROLLMENTS BY GRADES AND CONTROL**

Grades	County District	Independent District	State, Regional, Federal	Private	Total
7	9,327	10,608	656	65	20,656
8	12,051	10,835	658	182	23,726
9	34,156	14,841	669	5,529	55,195
10	24,197	10,543	437	3,823	39,000
11	19,929	9,035	353	3,627	32,944
12	19,035	8,712	346	3,762	31,855
7-12	118,695	64,574	3,119	16,988	203,376
Percentages	58.36	31.75	1.54	8.35	100.00

**TABLE III
COMPLETE HIGH SCHOOL ORGANIZATIONS
GROUPED ACCORDING TO SIZE AND CONTROL**

	County District	Independent District	State, Federal, Regional	Private	Total
Below 60	3	2	1	10	16
60-99	8	8	0	13	29
100-199	60	28	2	17	107
200-299	68	18	2	7	95
300-399	34	20	0	7	61
400-499	38	8	1	6	53
500 and above	62	30	1	8	101
Totals	273	114	7	68	462

S
1915-
1916-
1918-
1922-
1923-
1924-
1925-
1926-
1927-
1928-
1930-
1931-
1932-
1933-
1934-
1935-
1936-
1937-
1938-
1939-
1940-
1941-
1942-
1943-
1944-
1945-
1946-
1947-
1948-
1949-
1950-
1951-
1952-
1953-
1954-
1955-
1956-
1957-
1958-
1959-
1960

num
publ
larg
that
ther
1935
ing

TABLE IV
NUMBER OF HIGH SCHOOLS BY YEARS

School Year	Public White High Schools	Public Negro High Schools	Private High Schools	Totals
1915-16	316	No report	No report	316
1916-17	376	32	No report	408
1918-19	400	30	No report	430
1922-23	529	56	No report	585
1923-24	492	51	86	629
1924-25	496	50	84	630
1925-26	551	57	91	699
1926-27	552	55	88	695
1927-28	607	64	98	769
1928-29	614	73	97	784
1930-31	661	72	73	806
1931-32	676	70	86	832
1932-33	678	73	82	834
1933-34	682	74	84	838
1934-35	684	75	89	848
1935-36	680	75	83	833
1936-37	663	78	77	818
1937-38	652	80	76	808
1938-39	628	80	75	783
1939-40	605	78	75	758
1940-41	592	74	72	738
1941-42	574	71	71	716
1942-43	555	71	71	697
1943-44	541	70	70	681
1944-45	542	66	73	681
1945-46	546	65	73	674
1946-47	513	62	73	648
1947-48	507	61	75	643
1948-49	507	59	74	640
1949-50	493	59	71	623
1950-51	482	59	72	613
1951-52	474	59	71	604
1952-53	462	60	72	594
1953-54	449	60	73	582
1954-55	449	61	71	581
1955-56	439	60	71	570
1956-57	480	—	69	549
1957-58	471	—	69	540
1958-59	463	—	70	533
1959-60	457	—	70	527
1960-61	444	—	70	514

Table IV shows that there was a continuous growth in the number of high schools from 1915 to 1935. In 1935 there were 848 public and private high schools in the state. This represents the largest number of high schools that the state has ever had. Now that we have 514 high schools, public and private, it is clear that there has been a decrease in the number of high schools of 334 since 1935. This decrease has come about very largely through the merging of small high schools into larger school centers.

TABLE V
ENROLLMENT BY YEARS IN DIFFERENT TYPES
OF HIGH SCHOOLS

School Year	Public White High Schools	Public Negro High Schools	Private High Schools	Totals
1914-15	15,547	No report	No report	15,547
1915-16	18,850	1,054	No report	19,904
1916-17	20,800	1,225	No report	22,025
1917-18	22,929	1,209	No report	24,138
1918-19	21,255	1,218	No report	22,473
1920-21	25,939	1,446	No report	27,385
1922-23	35,806	2,373	5,007	43,186
1923-24	38,575	2,586	6,548	47,709
1924-25	37,264	2,952	5,857	46,073
1925-26	42,416	1,929	7,168	51,513
1926-27	46,096	2,664	7,440	56,210
1927-28	50,368	3,516	8,835	62,719
1928-29	54,903	4,083	8,590	67,576
1929-30	58,370	4,100	-----	62,470
1930-31	61,589	4,054	-----	65,643
1931-32	67,268	4,677	-----	71,945
*1932-33	*83,092	*6,994	*7,407	*97,493
1933-34	83,930	6,961	7,445	98,336
1934-35	88,583	7,983	7,846	104,412
1935-36	101,017	6,546	8,173	115,735
1936-37	106,799	8,711	8,994	124,504
1937-38	109,587	8,938	9,610	128,135
1938-39	117,284	9,587	9,166	136,037
1939-40	121,204	10,342	9,999	141,545
1940-41	123,822	10,440	10,185	144,447
1941-42	119,398	10,173	10,339	139,910
1942-43	113,662	9,947	10,048	133,657
1943-44	102,546	9,422	9,900	121,868
1944-45	102,619	9,448	10,376	122,443
1945-46	103,455	9,897	10,820	124,172
1946-47	109,511	10,439	12,161	132,111
1947-48	107,876	10,666	12,015	130,557
1948-49	110,324	11,384	12,124	133,832
1949-50	116,047	10,919	11,898	138,864
1950-51	120,733	10,862	12,506	144,101
1951-52	122,443	10,864	12,245	145,552
1952-53	129,345	11,323	12,861	153,529
1953-54	131,234	11,535	13,713	156,482
1954-55	143,984	12,306	14,230	170,520
1955-56	148,119	12,485	14,649	175,253
1956-57	163,715	-----	15,078	178,793
1957-58	166,886	-----	16,254	183,140
1958-59	172,991	-----	16,682	189,673
1959-60	179,487	-----	15,690	195,177
1960-61	186,388	-----	16,988	203,376

* Beginning with the school-year 1932-33, the enrollment of the seventh and eighth grades of six-year high schools and of junior high schools are included.

Table V presents an interesting picture in total high school enrollments in different types of high schools since 1915. High school enrollments increased rapidly until around 1941, then enrollments

began to decrease on account of the second World War. The lowest total high school enrollment was for the school-year 1943-44. Today, the total high school enrollment is 203,376. This enrollment includes seventh and eighth grade enrollments in schools that incorporate these grades in their organizations.

There are 158,994 pupils enrolled in grades 9-12. The total high school enrollment for the current school year is 8,199 more than the total enrollment last year. An increase in enrollment of 4,332 took place in county high schools while there is an increase in enrollment of 2,353 in independent district schools. There is an increase of 1,298 in the private high school enrollment.

Totals

15,547
 19,904
 22,025
 24,138
 22,473
 27,385
 43,186
 47,709
 46,073
 51,513
 56,210
 62,719
 67,576
 62,470
 65,643
 71,945
 97,493
 98,336
 04,412
 15,735
 24,504
 28,135
 36,037
 41,545
 44,447
 39,910
 33,657
 21,868
 22,443
 24,172
 32,111
 30,557
 33,832
 38,864
 44,101
 45,552
 53,529
 56,482
 70,520
 75,253
 78,793
 33,140
 39,673
 95,177
 03,376

and eighth

school en-
 h school
 rollments

TABLE VI
HIGH SCHOOLS ACCREDITED THROUGH GRADE TWELVE
 1910—1961

School Year	Public White High Schools	Public Negro High Schools	Private High Schools	Totals
1909-10	54	No report	29	83
1910-11	69	No report	32	101
1911-12	85	No report	33	118
1912-13	100	No report	34	134
1913-14	123	No report	38	162
1914-15	134	No report	41	175
1915-16	149	No report	45	194
1916-17	171	No report	50	221
1917-18	185	No report	52	237
1918-19	201	No report	52	253
1919-20	220	No report	55	275
1920-21	225	No report	57	282
1921-22	228	No report	55	283
1922-23	263	7	61	331
1923-24	286	8	69	363
1924-25	311	11	68	390
1925-26	342	14	73	429
1926-27	382	14	80	476
1927-28	415	13	83	511
1928-29	457	16	87	560
1929-30	491	18	89	598
1930-31	522	26	91	639
1931-32	527	34	84	645
1932-33	539	35	83	648
1933-34	535	34	82	651
1934-35	529	34	84	647
1935-36	559	51	77	687
1936-37	558	54	78	690
1937-38	546	56	75	677
1938-39	543	60	73	676
1939-40	529	59	73	661
1940-41	516	61	72	649
1941-42	510	56	70	636
1942-43	500	54	70	626
1943-44	494	55	69	618
1944-45	490	56	70	616
1945-46	487	55	71	613
1946-47	463	55	72	590
1947-48	464	55	71	590
1948-49	463	54	72	589
1949-50	452	55	70	577
1950-51	443	56	70	569
1951-52	436	55	70	561
1952-53	425	55	71	551
1953-54	412	56	71	539
1954-55	400	56	70	526
1955-56	394	54	69	517
1956-57	427	—	67	494
1957-58	420	—	68	488
1958-59	412	—	67	479
1959-60	403	—	67	470
1960-61	394	—	68	462

Table VI shows the situation as regards the number of accredited high schools by years since 1910. When we use the expression "accredited high school," we think of an organization that offers a program of work through the twelfth grade. High schools that do not give work through the twelfth grade should be looked upon as incomplete feeder schools for the regularly organized, complete high schools of the district.

Accreditation of high schools is primarily a means to an end. This end is that of stimulating growth and improvement in the schools. Originally, accreditation of high schools came about as a result of the need of institutions of higher learning for some satisfactory basis for admission to college. In recent years, however, as a result of increasing numbers of young people continuing through elementary school into high school, the emphasis upon accreditation as a basis for college admission has been shifted to that of better education for **all youth**. The rapidly changing social, industrial, and economic world and the marked increase in high school enrollment is challenging the schools to provide for a diversity of needs and capacities.

To better provide for these needs and capacities, a broader and more varied high school program is demanded. High schools should not only prepare some pupils for work in higher institutions, but they should also prepare a larger proportion of the pupils for direct entrance into business, industry, agriculture, and homemaking. It is at once apparent that small high schools cannot possibly offer an enriched program to meet the needs and capacities of all high school pupils unless it is done at excessive cost, hence the justification of requiring increased enrollment for accreditation of high schools.

Totals

- 83
- 101
- 118
- 134
- 162
- 175
- 194
- 221
- 237
- 253
- 275
- 282
- 283
- 331
- 363
- 390
- 429
- 476
- 511
- 560
- 598
- 639
- 645
- 648
- 651
- 647
- 687
- 690
- 677
- 676
- 661
- 649
- 636
- 626
- 618
- 616
- 613
- 590
- 590
- 589
- 577
- 569
- 561
- 551
- 539
- 526
- 517
- 494
- 488
- 479
- 470
- 462

TABLE VII
WHEREABOUTS OF 1960 GRADUATES OF KENTUCKY HIGH SCHOOLS*

	Public High Schools						Private and Parochial High Schools					
	Boys	Per cent	Girls	Per cent	Total	Per cent	Boys	Per cent	Girls	Per cent	Total	Per cent
Attending College or University	4,863	39.1	4,254	31.9	9,117	35.4	970	56.3	672	37.6	1,642	46.8
Attending Trade, Technical or Nursing School	436	3.5	764	5.7	1,200	4.6	56	3.2	126	7.0	182	5.2
Attending Commercial Schools	127	1.0	670	5.0	797	3.1	18	1.0	70	3.9	88	2.5
Employed in Sales or Office	793	6.4	2,469	18.5	3,262	12.7	137	7.9	529	29.6	666	19.0
Employed in Farming	1,252	10.1	21	.2	1,273	4.9	48	2.8	0	0.0	48	1.4
Employed in Factory or Trades	1,576	12.7	719	5.4	2,295	8.9	131	7.6	38	2.1	169	4.8
Other Employment Including Military	1,755	14.1	443	3.3	2,198	8.5	172	10.0	44	2.5	216	6.1
At Home	984	7.9	3,231	24.3	4,215	16.4	20	1.2	174	9.7	194	5.5
Unknown	646	5.2	763	5.7	1,409	5.5	172	10.0	135	7.6	307	8.7
Total Boys	12,432	100.0					1,724	100.0				
Total Girls			13,334	100.0					1,788	100.0		
Total Boys and Girls					25,766	100.0					3,512	100.0
Total Ninth Grade 1956-57 School Year					41,944						4,615	

*Source: Last Year's Graduates — Principal's Annual High School Report, October, 1960.

Summary for All Schools	Boys	Per cent	Girls	Per cent	Total	Per cent
College or University	5,833	54.2	4,926	45.8	10,759	100.0
Total Graduates of all Public and Non-public High Schools	14,156	4.84	15,122	51.6	29,278	100.0

College or University	5,833	54.2	4,926	45.8	10,759	100.0
Total Graduates of all Public and Non-public High Schools	14,156	4.84	15,122	51.6	29,278	100.0

KENTUCKY HIGH SCHOOLS 1960-61

County District School	Incomplete	Temporary	Emergency	Provisional	Standard	Selective	Compre- hensive	High School Enrollment by Grades							Enr.		Library Appropriation
								7	8	9	10	11	12	Total	9-12	Tchs.	
ADAIR COUNTY Co. H.S. (Columbia)					x					261	166	143	164	734		31	\$1101
ALLEN COUNTY Co. H.S. (Scottsville) Scottsville Ind. Dist.				x	x			33	54	156 45	112 30	78 24	79 20	425 206	119	20½ 11	1000 700
ANDERSON COUNTY County Anderson (Lawrenceburg) Western (Sinai)					x					161 108 53	114 92 22	76 59 17	115 91 24	466 350 116		23 17 6	850 700 150
BALLARD COUNTY Co.—Ballard Memorial (Barlow)					x					153	111	80	77	421		24	900
BARREN COUNTY County Austin-Tracy (Lucas) Hiseville Park City Temple Hill (Glasgow) Caverna Ind. Dist. (Horse Cave) Glasgow Ind. Dist. Glasgow Bunche				x						256 45 64 33 64	210 37 44 72 57	177 30 49 44 54	170 35 40 49 46	813 147 197 248 221		50 12 12 13 13	1224 221 297 374 332
				x				92	78	64	48	44	44	370	200	18	770
					x			227	214	207	120	121	96	985		45	1423
								206	186	179	93	93	75	832	440	36	1248
				x				21	28	28	27	28	21	153	104	9	175
BATH COUNTY County Owingsville Sharpsburg				x				38	38	134 101	103 84	79 61	99 61	480 307		27 15	461 461
				x				38	38	33	19	18	27	173	97	12	

KENTUCKY HIGH SCHOOLS 1960-61

County District School	Incomplete	Temporary	Emergency	Provisional	Standard	Selective	Compre- hensive	High School Enrollment by Grades							Enr. 9-12	Tchs.	Library Appro- priation	
								7	8	9	10	11	12	Total				
BELL COUNTY																		
County																		
Co. H.S. (Pineville)																		
Henderson Settlement (Frakes)																		
Lone Jack (Four Mile)																		
Red Bird (Beverly)																		
Middlesboro Ind. Dist.																		
Middlesboro																		
Lincoln																		
Pineville Ind. Dist.																		
BOONE COUNTY																		
Co. H.S. (Florence)																		
Walton Ind. Dist.																		
BOURBON COUNTY																		
County																		
Co. H.S. (Paris)																		
North Middletown																		
Paris Ind. Dist.																		
Paris																		
Western																		
Millersburg Military																		
Inst. (Pr.)																		
BOYD COUNTY																		
Co. H.S. (Ashland)																		
Ashland Ind. Dist.																		
Ashland Sr.																		
Coles Jr.																		
Putnam Jr.																		
B. T. Washington																		
Catlettsburg Ind. Dist.																		
Fairview Ind. Dist.																		
(Ashland)																		
Holy Family (Ashland)																		
(Pr.)																		

674

B. T. Washington					294	332	320						906		31½	1290
Catlettsburg Ind. Dist.		x			17	13	11	14	10	5	70	40			4	
Fairview Ind. Dist. (Ashland)			xx		135	133	86	84	51	64	553	285		10½	600	
Holy Family (Ashland) (Pr.)			x				35	30	22	15	102			19	500	
														5½	200	

KENTUCKY HIGH SCHOOLS 1960-61

County District School	Incomplete	Temporary	Emergency	Provisional	Standard	Selective	Compre- hensive	High School Enrollment by Grades							Enr. 9-12	Tchs.	Library Appropriation	
								7	8	9	10	11	12	Total				
								BOYLE COUNTY										
County								165	149	155	96	75	75	715		34	\$1171	
Forkland (Gravel Switch)		x						17	13	11	14	10	11	61	48	4	150	
Junction City				x				69	58	74	45	35	25	306	179	13	459	
Parksville		x						36	32	29	15	12	14	138	70	7	300	
Perryville				x				60	46	36	25	18	25	210	104	10½	262	
Danville Ind. Dist.								41	50	139	147	116	138	691		39½	1050	
Danville					x					162	129	90	118	499		28	750	
Bate				x				41	50	37	18	26	20	192	101	11½	300	
BRACKEN COUNTY																		
Co. H.S. (Brooksville)						x				92	71	44	51	258		16½	750	
Augusta Ind. Dist.			x					27	19	23	21	16	20	126	80	7	400	
St. James (Brooksville)		x								5	8	3	1	17		2	21	
BREATHITT COUNTY																		
Co. H.S. (Jackson)						x				299	257	161	165	882		39	1800	
Jackson Ind. Dist.								54	37	27	20	16	23	177	86	9½	250	
Mt. Carmel (Lawson) (Pr)				x						42	41	43	50	176		9	400	
Oakdale (Pr) (Jackson)				x						23	17	16	13	69		5	200	
Riverside Inst. (Pr) (Lost Creek)				x				9	10	18	8	5	8	58	39	8	500	
BRECKINRIDGE COUNTY																		
County								69	57	194	140	111	120	691		33½	1025	
Co. H. S. (Hardinsburg)						x				124	87	66	84	361		18½	600	
Irvington				x				69	57	70	53	45	36	330	204	15	425	
Cloverport Ind. Dist.			x							32	24	20	16	92		5½	500	
St. Romuald (Pr.) (Hardinsburg)			x							44	34	32	21	141		5½	282	

675

KENTUCKY HIGH SCHOOLS 1960-61

676

County District School	Incomplete	Temporary	Emergency	Provisional	Standard	Selective	Compre- hensive	High School Enrollment by Grades							Enr. 9-12	Tchs.	Library Appro- priation		
								7	8	9	10	11	12	Total					
BULLITT COUNTY																			
County																			
Lebanon Junction				x					282	199	132	150	763		38½	\$1535			
Mt. Washington				x					48	40	18	24	130		8	195			
Shepherdsville					x				47	47	28	42	164		9½	260			
St. Aloysius (Pr)		x							187	112	86	84	469		21	1080			
(Shepherdsville)									16	12	13	7	48		3½				
St. Benedict (Pr)		x																	
(Lebanon Junction)									17	7	14	7	45		3	1000			
BUTLER COUNTY																			
County																			
Co. H.S. (Morgantown)					x					206	198	153	123	126	806	600	33	1200	
CALDWELL COUNTY																			
County									226	228	245	193	141	154	1187		54	1910	
Co. H.S. (Princeton)					x				205	214	197	148	101	121	986	567	42	1310	
Dotson (Princeton)		x							21	14	7	11	8	7	68	33	4½	50	
Fredonia			x								41	34	32	26	133		7½	550	
CALLOWAY COUNTY																			
County																			
Co. H. S. (Murray)					x				120	127	172	138	118	112	540		27	1200	
Murray Ind. Dist.						x			105	112	128	74	86	83	618		29	950	
Murray									105	112	116	68	74	73	548	331	24	950	
Douglass		x							15	15	12	6	12	10	70	40	5		
Murray College H.S. (St.)					x				67	56	39	41	32	35	270	147	13	600	
CAMPBELL COUNTY																			
County																			
Co. H.S. (Alexandria)											279	164	132	115	690		37	1200	
Bellevue Ind. Dist.									77	80	62	61	50	60	390	233	21	700	
Dayton Ind. Dist.											96	77	60	46	279		15	500	
Ft. Thomas Ind. Dist.																			
Newport Ind. Dist.							x		134	166	161	106	128	131	826	526	47½	1900	
Silver Grove Ind. Dist.				x					41	37	401	167	113	139	820		38	2800	
Southgate Ind. Dist.											32	22	25	21	178	100	6½	350	
											(High school pupils sent to Newport High School)								

KENTUCKY HIGH SCHOOLS 1960-61

879

County District School	Incomplete	Temporary	Emergency	Provisional	Standard	Selective	Compre- hensive	High School Enrollment by Grades							Enr.		Library Appro- priation
								7	8	9	10	11	12	Total	9-12	Tchs.	
CHRISTIAN COUNTY																	
County								364	330	299	210	143	158	1504		71	\$3856
Co. Sr. H.S. (Hopkinsv)					x						210	143	158	511		29	1500
Crofton Jr.				x				71	73	49				193		8	500
Lacy Jr. (R. 7, Hopkinsv)				x				76	70	57				203		9	305
Pembroke Jr.				x				71	53	62				186		8	279
Sinking Fork Jr.				x				74	65	68				207		9	520
(R. 4, Hopkinsville)																	
So. Christian Jr. (Herndon)				x				72	69	63				204		8	752
Hopkinsville Ind. Dist.								92	318	372	282	235	202	1501		64	2200
Hopkinsville					x				227	194	158	141	115	835	608	34½	1200
Attucks					x			92	91	178	124	94	87	666	483	29½	1000
Ft. Campbell, Jr. (Fed.)					x			125	143	91				359		19	700
CLARK COUNTY																	
Co. H.S. (Winchester)							x				328	247	201	181	957	41½	1320
St. Agatha Ac. (Pr)		x								21	15	10	12	58		5	116
(Winchester)																	
CLAY COUNTY																	
Co. H.S. (Manchester)					x						310	180	170	130	790	32	900
Oneida Inst. (Pr.)				x							69	51	45	36	201	9	300
CLINTON COUNTY																	
Co. H.S. (Albany)					x						159	105	102	68	434	21	1200
CRITTENDEN COUNTY																	
Co. H.S. (Marion)					x						148	123	102	95	468	25	600
CUMBERLAND COUNTY																	
County					x			43	39	133	75	70	49	409		22	500
Co. H.S. (Burkesville)								107	61	57	38	38	263		14½	400	
Marrowbone	x							43	39	26	14	13	11	146	64	7½	100

KENTUCKY HIGH SCHOOLS 1960-61

089

County District School	Incomplete	Temporary	Emergency	Provisional	Standard	Selective	Compre- hensive	High School Enrollment by Grades							Enr. 9-12	Tchs.	Library Appropriation
								7	8	9	10	11	12	Total			
								FAYETTE COUNTY									
County																	
Bryan Sta. Sr. (Lexington)							x	155	1156	1105	702	636	595	4349		199	\$9893
Douglass (Lexington)								71	47	44	32	34	37	746	147	35	1727
Lafayette Sr. (Lexington)				x				84	53	50	380	373	331	1084		47	633
Athens Jr. (Lexington, R. 5)					x				462	391				853		12	2378
Bryan Sta. Jr. (Lexington)					x				594	620				1214		38	1855
Lafayette Jr. (Lexington)					x			750	810	616	417	343	345	3281		52	2844
Lexington Ind. Dist.								262	218	201	131	105	102	1019	539	41	5963
Dunbar							x	232	308	185	286	238	243	767		39	1779
Henry Clay Sr.							x	256	284	230				725		32½	1733
Lexington Jr.					x			33	33	32	33	32	33	770		29½	1234
Morton Jr.					x									196	130	15	500
University H.S. (St.) (Lexington)				x				12	19	9				40		18	600
Lexington Catholic (Pr.) Sayre Jr. (Lexington)					x							98	101	444		4	400
FLEMING COUNTY																	
Co. H.S. (Flemingsburg)					x					175	114	103	115	507		23½	1000
FLOYD COUNTY																	
County								23	24	959	707	621	557	2891		133	4766
Auxier		x						23	24	15	12	8	12	94	47	5	150
Betsy Layne				x						149	103	78	73	403		16½	605
Garrett				x						84	40	41	40	205		10½	308
Martin				x						75	58	60	59	252		12	450
Maytown				x						49	41	37	44	171		10	170
McDowell				x						116	85	75	70	346		15½	519
Frestonsburg				x	x			245	160	168	116	116	689		31½	1033	
Wayland				x				90	81	41	50	262		11½	368		
Wheelwright				x				133	120	106	93	452		18½	1013		
Palmer-Dunbar (Wheelwright)	11							3	7	7		17		2	150		
FRANKLIN COUNTY																	
Co. H.S. (Frankfort)								365	226	196	166	166	953		49½	1473	
Frankfort Ind. Dist.					x			103	71	71	75	320		18	600		
Good Shepherd (Pr.) (Frankfort)				x				26	12	20	18	76		4½	93		

ramer-Dunbar (Wheelwright)	11								100	120	100	30	402	18½	1013
FRANKLIN COUNTY									3	7	7		17	2	150
Co. H.S. (Frankfort)															
Frankfort Ind. Dist.									365	226	196	166	953	49½	1473
Good Shepherd (Pr.) (Frankfort)				x		x			103	71	71	75	320	18	600
									26	12	20	18	76	4½	93

KENTUCKY HIGH SCHOOLS 1960-61

County District School	Incomplete	Temporary	Emergency	Provisional	Standard	Selective	Compre- hensive	High School Enrollment by Grades						Enr.		Library Appropriation		
								7	8	9	10	11	12	Total	9-12		Tchs.	
FULTON COUNTY																		
County																		
Co. H.S. (Hickman)					x			158	101	94	83	436		22		\$ 677		
Riverview (Hickman)		x						121	78	67	62	328		18		492		
Fulton Ind. Dist.					x			37	23	27	21	108		4		185		
								55	55	29	46	185		10½		500		
GALLATIN COUNTY																		
Co. H.S. (Warsaw)					x			70	41	41	43	195		12		1250		
GARRARD COUNTY																		
County								75	59	81	68	56	49	388	202	22	1208	
Buckeye (Lancaster)		x						41	27	23	12	8	9	52		4	350	
Camp Dick Robinson (Lancaster)		x								25	22	17	19	151	83	9	408	
Paint Lick						x		34	32	33	34	31	21	185	119	9	450	
Lancaster Ind. Dist.								69	52	62	49	33	36	301		15	473	
Lancaster						x		69	52	53	41	29	29	273	152	12	435	
Mason (Lancaster)		x								9	8	4	7	28		3	38	
GRANT COUNTY																		
Co. H.S. (Dry Ridge)						x		40	44	133	120	82	82	417		19	600	
Williamstown Ind. Dist.					x					30	35	18	23	190	106	10	924	
GRAVES COUNTY																		
County								130	118	367	277	217	249	1358		73½	3268	
Cuba (Mayfield)						x		36	37	41	25	22	31	192	119	12	600	
Fancy Farm						x				46	39	16	29	130		7½	345	
Farmington						x		36	33	29	17	16	18	149	80	8	400	
Lowes						x				57	58	57	48	220		9½	425	
Sedalia						x		58	48	48	32	37	41	264	158	12½	398	
Symsonia						x				71	50	29	32	182		11½	500	
Wingo						x				75	56	40	50	221		13	600	
Mayfield Ind. Dist.								24	16	197	135	115	127	614		30½	925	
Mayfield										178	115	102	117	512		25½	775	
Dunbar		x				x		24	16	19	20	13	10	102	62	5	150	

KENTUCKY HIGH SCHOOLS 1960-61

County District School	Incomplete	Temporary	Emergency	Provisional	Standard	Selective	Compre- hensive	High School Enrollment by Grades						Total	Enr.		Library Appro- priation	
								7	8	9	10	11	12		9-12	Tchs.		
GRAYSON COUNTY																		
County																		
Caneyville				x						155	124	98	91	468		27	\$1150	
Clarkson				x						89	70	54	45	258		14	550	
Leitchfield Ind. Dist.				x				65	60	66	54	44	46	210		13	600	
										74	52	31	41	323	198	15	480	
GREEN COUNTY																		
Co.—Greensburg					x					166	94	118	70	448		25	1500	
GREENUP COUNTY																		
County										332	236	208	205	981		42	1788	
McKell (So. Shore)				x						156	108	97	99	460		21	1000	
Wurtland				x						176	128	111	106	521		21	788	
Greenup Ind. Dist.				x				46	46	48	31	31	19	221	129	9	500	
Raceland Ind. Dist.				x				67	75	67	48	40	39	336	194	16	1250	
Russell Ind. Dist.					x					174	109	93	95	471		18½	707	
So. Portsmouth Ind. Dist.			x					20	17	20	19	25	15	116	79	5	300	
HANCOCK COUNTY																		
County										96	86	63	69	314		18	572	
Hawesville				x						68	60	37	48	213		10	386	
Lewisport				x						28	26	26	21	101		8	186	
HARDIN COUNTY																		
County										451	345	286	292	1374		78	4900	
Glendale				x						75	54	55	64	248		14	1400	
Howe Valley (Cecilia)				x						45	45	31	30	151		9	900	
Lynnvale (White Mills)				x						62	56	39	48	205		10	500	
Rineyville				x						92	59	42	49	242		12	750	
Sonora				x						45	34	36	34	149		9½	700	
Vine Grove					x					132	97	83	67	379		14	650	
Elizabethtown Ind. Dist.					x					185	108	90	104	487		24½	1650	
West Point Ind. Dist.																		
Ft. Knox (Fed.)							x	347										
Elizabethtown Catholic (Pr.)				x						324	253	148	137	131	1340	669	66	1152
										61	33	27	36	157		6½	310	

(High school pupils sent to Elizabethtown H. S.)

Elizabethtown Catholic (Pr.)	x	x	347	(High school pupils sent to Elizabethtown H. S.)	324	253	148	137	131	1340	487	24½	1650
					61	33	27	36	157	669	66	6½	11152
													310

KENTUCKY HIGH SCHOOLS 1960-61

683

County District School	Incomplete	Temporary	Emergency	Provisional	Standard	Selective	Compre- hensive	High School Enrollment by Grades							Enr. 9-12	Tchs.	Library Appropriation	
								7	8	9	10	11	12	Total				
HARLAN COUNTY																		
County	10							20	18	997	727	523	495	2780		139½	\$4559	
Benham				x						35	34	34	36	139		10	361	
East Benham			x					20	18	20	17	14	11	100	62	6½	250	
Black Star (Alva)				x				36		36	27	18	27	108		9	150	
Cumberland					x			197		129	100	100	526		21	783		
Evarts					x			243		214	125	121	703		30½	1350		
Hall (Grays Knob)					x			222		176	117	85	600		28	750		
Loyall					x			110		65	67	72	314		17	470		
Pine Mountain					x			40		20			60		3	100		
Wallins					x			94		45	48	43	230		14½	345		
Harlan Ind. Dist.						x		33	19	151	125	95	95	518		24	1012	
Harlan								103		79	57	71	310		16	700		
Rosenwald				x				33	19	48	46	38	24	208	156	8	312	
Lynch Ind. Dist.					x			122		86	69	83	360		21½	2085		
East Main Street						x		83		57	43	56	239		14½	1500		
West Main Street				x				39		29	26	27	121		7	585		
HARRISON COUNTY																		
Co. H.S. (Cynthiana)						x		85	65	158	109	92	90	449		26	1100	
Cynthiana Ind. Dist.								69	60	69	45	34	27	325		17	950	
Cynthiana				x				16	5	62	45	34	27	297	168	14	800	
Banneker Jr.				x						7				28		3	150	
HART COUNTY																		
County								206	189	234	166	130	119	1044		47	1779	
Cub Run								36	41	53	45	25	26	226	149	11½	552	
Memorial (Hardyville)					x			73	82	80	49	52	44	380	225	16½	570	
Munfordville					x			97	66	101	72	53	49	438	275	19	657	
HENDERSON COUNTY																		
Co. H.S. (Henderson)										308	212	175	196	891		44+	1200	
Henderson Ind. Dist.										276	214	198	168	856		39	1266	
Henderson										222	163	148	141	674		29	1000	
Douglass				x						54	51	50	27	182		10	266	
Holy Name (Henderson) (Pr.)				x						45	35	32	48	160		7	190	

KENTUCKY HIGH SCHOOLS 1960-61

634

County District School	Incomplete	Temporary	Emergency	Provisional	Standard	Selective	Compre- hensive	High School Enrollment by Grades							Enr. 9-12	Tchs.	Library Appro- priation	
								7	8	9	10	11	12	Total				
HENRY COUNTY																		
County																		
Henry Central (New Castle)				x					186	142	91	84	503		25		\$ 500	
Pleasureville				x					117	101	57	56	331		15½		500	
Eminence Ind. Dist.				x							69	41	34	28	172		9½	
				x							54	40	24	26	179	144	8	1000
HICKMAN COUNTY																		
Co. H.S. (Clinton)					x						113	61	78	65	317		18	450
HOPKINS COUNTY																		
County									50	59	556	405	380	371	1821		86	6497
Charleston (Dawson Springs)			x						29	34	28	31	27	22	171	108	7½	633
Dalton		x							21	25	22	22	17	12	119	73	6½	475
Hanson			x								30	26	15	19	90		5½	500
Madisonville					x						254	184	185	191	814		35	1095
Rosenwald				x							40	28	35	27	130		7½	294
Madisonville											40	28	32	22	122		6	
Nebo			x								142	86	69	78	375		18	3500
So. Hopkins (Madisonville)						x					57	37	29	22	246	145	10	500
Dawson Springs Ind. Dist.			x						54	47	49	53	51	45	327		14	600
Earlington Ind. Dist.				x					43	43	37	33	29	30	215	129	9	450
Earlington									20	23	12	20	22	15	112	69	5	150
J. W. Million			x															
JACKSON COUNTY																		
County									108	147	185	120	116	96	772		39	861
McKee									54	77	109	63	69	60	432	301	22½	574
Tyner (McKee)				x					54	70	76	57	47	36	340	216	16½	287
Annville Inst. (Pr.)				x						35	29	25	29	15	133	98	6	200

KENTUCKY HIGH SCHOOLS 1960-61

County District School	Incomplete	Temporary	Emergency	Provisional	Standard	Selective	Compre- hensive	High School Enrollment by Grades							Enr.		Library Appro- priation	
								7	8	9	10	11	12	Total	9-12	Tchs.		
JEFFERSON COUNTY																		
County								4352	4611	4263	2683	2389	2211	20509		867	\$84185	
Butler (Shively)							x	630	646	594	369	351	284	2874	1598	118	10986	
Durrett (Louisville)							x	486	525	488	308	271	243	2321	1310	101	8932	
Eastern (Middletown)							x	403	368	367	242	214	195	1789	1018	72	3468	
Fern Creek							x	244	284	299	179	152	160	1318	790	58	3019	
Southern (R. 19, Louisville)							x	332	380	303	221	184	241	1661	949	72	2888	
Valley (Valley Station)							x	546	510	522	258	271	441	2548	1492	110	8494	
Waggener (St. Matthews)							x	499	562	494	361	319	364	2599	1538	109	11109	
Seneca (Louisville)							x	498	591	519	351	299	283	2541	1452	109	19787	
Fairdale	11							306	316	244	149	131		1146	48		6790	
Pleasure Ridge Park	11							408	429	433	245	197		1712	70		8712	
Anchorage Ind. Dist. Jr.				x				23	32	26				81		4½	2400	
Ormsby Village (Reg.)				x				8	20	25	17			70		10	200	
(Anchorage)																		
Kentucky Military Inst. (Pr.)																		
(Lyndon)																		
Louisville Ind. Dist.				x				4212	4027	3688	54	76	96	86	312	18	700	
Ahrens Trade					x						2860	2414	2212	19413		885½	27414	
Atherton						x					536	343	259	1138		59	1682	
Central							x				287	292	284	863		39½	1205	
Male							x				541	462	415	1418		65	2385	
Manual							x				444	356	326	1126		48	1563	
Shawnee							x	319	278	276	583	534	509	2499	1902	115	3237	
Barrett Jr.								370	339	357	380	307	257	2010	1301	84	2613	
Duvalle Jr.					x			269	254	194				717		31	1016	
Eastern Jr.					x			356	349	257				962		44	1391	
Gottschalk Jr.					x			383	299	273				955		39	1313	
Highland Jr.					x			312	324	292				928		43	1283	
Jackson St. Jr.					x			246	231	261				738		32	1044	
Madison St. Jr.					x			159	157	152				468		24½	1063	
Manly Jr.					x			346	337	283				966		44½	1695	
Parkland Jr.					x			391	397	287				1075		51	1469	
Southern Jr.					x			350	351	360				1061		45	1461	
Western Jr.					x			375	355	350				1080		48	1400	
Ahrens Adult Night H.S.								336	356	303				995		47	1594	
Kv. School for Blind (St.)	11			x							43	89	120	162	414		24	
(Louisville)								11	8	7	8	4	1*	39	20	7		

*Attending Jefferson County School

KENTUCKY HIGH SCHOOLS 1960-61

989

County District School	Incomplete	Temporary	Emergency	Provisional	Standard	Selective	Compre- hensive	High School Enrollment by Grades							Enr. 9-12	Tchs.	Library Appro- priation			
								7	8	9	10	11	12	Total						
								Louisville Private:												
Ac., Our Lady of Mercy				x							132	68	75	107	382		16	\$ 385		
Assumption						x					175	95	122	100	492		22½	984		
deSales					x						204	132	118	131	585		24	3000		
Flaget						x					230	143	150	162	685		31	1200		
Holy Rosary					x						110	68	74	107	359		16	718		
Ky. Home Sch. for Girls				x						20	12	12	16	18	78	58	9	225		
Loretto					x						94	61	70	85	310		13½	775		
Louisville Collegiate					x					24	18	11	14	11	78	54	11	385		
Portland Christian			x								27	20	13	16	76		8			
Presentation Ac.					x						214	191	146	166	717		32	1000		
Sacred Heart Ac.					x						195	152	132	114	593		30	1500		
St. Thomas Sem. H.S.				x							75	38	41	26	180		10	975		
St. Xavier						x					359	277	264	271	1171		50	1493		
Trinity					x						263	179	145	192	779		38	1150		
Ursuline Ac.					x						195	80	87	110	472		22	675		
Bishop David Memorial	9										117				117		4			
Catholic Country Day				x						17	20	13	7	6	7	70	33	6	300	
JESSAMINE COUNTY																				
County											241	111	84	100	536		28½	711		
Co. H.S. (Nicholasville)					x						218	96	68	92	474		24½	711		
Rosenwald-Dunbar (Nicholasville)			x								23	15	16	8	62		4			
JOHNSON COUNTY																				
County											88	159	256	227	152	155	1037	47	1364	
Flat Gap											45	76	48	59	30	27	285	13	427	
Meade Memorial (Williamsport)					x						43	83	98	72	61	54	411	285	18	425
Oil Springs													110	96	61	74	341	16	512	
Paintsville Ind. Dist.					x						108	66	62	62	298		14	800		
Van Lear Ind. Dist.			x								35	29	26	29	119		4	500		
Our Lady of the Mtns. (Paintsville) (Pr.)			x								5	5	3	3	16		4	200		

van Lear Ind. Dist.
Our Lady of the Mins.
(Paintsville) (Pr.)

35 29 26 29 119 4 500
5 5 3 3 16 4 200

KENTUCKY HIGH SCHOOLS 1960-61

County District School	Incomplete	Temporary	Emergency	Provisional	Standard	Selective	Compre- hensive	High School Enrollment by Grades						Enr. 9-12	Tchs.	Library Appro- priation	
								7	8	9	10	11	12				Total
								KENTON COUNTY									
County																	
Dixie Heights (So. Ft. Mitchell)							x	284	222	157	153	130	946	662	42	\$1600	
Simon Kenton (Independence)							x	320	245	191	139	130	1025	705	42	1538	
Beechwood Ind. Dist. (So. Ft. Mitchell)					x			29	44	30	20	19	35	177	104	11½	600
Covington Ind. Dist.																	
Grant					x			49	32	48	26	18	15	188	107	17	265
Holmes							x	411	465	386	367	319	263	2211	1335	93	3222
Carlisle Jr.					x			251	200	155				606		30	909
Erlanger Ind. Dist.							x	138	142	141	104	80	99	704	424	32½	1500
Ludlow Ind. Dist.					x			85	83	80	44	60	30	382	214	19	700
Private:																	
Covington Catholic					x					182	133	130	122	567		24	900
Covington Latin										64	46	44	33	187		9	374
Holy Cross (Covington)				x						88	65	65	62	280		13	420
LaSalette Ac. (Covington)				x						115	78	63	68	324		13	650
Notre Dame Ac. (Covington)				x						170	109	94	100	473		23½	710
St. Henry (Erlanger)				x						80	76	70	80	306		13½	614
Villa Madonna (Covington)					x					83	53	48	41	225		14	
KNOTT COUNTY																	
County																	
Carr Creek				x				100	76	65	53	294			14	414	
Cordia			x					30	38	14	24	106			7	100	
Hindman				x				159	140	111	94	504			19½	760	
Knott (Pippa Passes)			x					11	32	11	10	64			6	100	

KENTUCKY HIGH SCHOOLS 1960-61

888

County District School	Incomplete	Temporary	Emergency	Provisional	Standard	Selective	Compre- hensive	High School Enrollment by Grades							Enr. 9-12	Tchs.	Library Appro- priation	
								7	8	9	10	11	12	Total				
KNOX COUNTY																		
County							x	3	10	417	316	283	246	1275		58½	\$4021	
Knox Central (Barbourville)								296	242	223	176	937		42½		3500		
Lynn Camp (Corbin)		x			x			3	10	108	61	50	60	279		13	411	
Rosenwald (Barbourville)								63	44	13	13	10	10	59		3	110	
Barbourville Ind. Dist.				x				63	44	32	40	28	31	238		131	400	
LARUE COUNTY																		
Co. H.S. (Hodgenville)					x				132	148	131	127	107	645		513	32	900
LAUREL COUNTY																		
County								35	28	402	317	244	230	1256		80½	2140	
Bush (Lida)					x					84	69	58	45	256		18	500	
Felts (N. Corbin)	10							35	28	34	13	10	110	551		6½	150	
Hazel Green (East Bernstadt)					x					186	146	104	115	551		26	900	
Lily						x				98	89	82	70	339		20	590	
East Bernstadt Ind. Dist.										(High school pupils sent to London High School)								
London Ind. Dist.					x					97	61	67	79	304		18	600	
LAWRENCE COUNTY																		
County								147	170	213	159	139	131	959		33	2100	
Blaine			x					35	53	49	35	35	30	237		149	600	
Louisa					x			112	117	164	124	104	101	722		493	1500	
LEE COUNTY																		
Co. H.S. (Beattyville)						x		29	77	156	104	87	74	527		421	22½	1200
LESLIE COUNTY																		
Co. H.S. (Hyden)					x				108	244	149	112	98	711		603	26	100

LESLIE COUNTY
Co. H.S. (Hyden)

108 244 149 112 98 711 603 26 100

KENTUCKY HIGH SCHOOLS 1960-61

689

County District School	Incomplete	Temporary	Emergency	Provisional	Standard	Selective	Compre- hensive	High School Enrollment by Grades							Enr. 9-12	Tchs.	Library Appro- priation
								7	8	9	10	11	12	Total			
LETCHER COUNTY																	
County								19	20	564	441	298	314	1656		69½	\$2778
Fleming-Neon (Fleming)					x					162	111	67	75	415		18½	622
Kingdom Come (Linefork)		x						19	20	28	24	17	18	126	87	8	194
Letcher				x						103	66	68	53	290		13½	725
Whitesburg					x					271	240	146	168	825		29½	1237
Jenkins Ind. Dist.								15	20	147	99	85	87	453		21½	675
Jenkins					x					126	81	70	73	350		15½	525
Dunham		x						15	20	21	18	15	14	103	68	6	150
LEWIS COUNTY																	
County								33	24	240	162	132	121	712		29	1200
Laurel (Camp Dix)			x					33	24	24	18	14	6	119	62	5	100
Lewis Co. H. S.				x						162	96	76	75	409		15	600
Tollesboro				x						54	48	42	40	184		9	500
LINCOLN COUNTY																	
County								148	149	150	113	85	111	756		33	1651
Crab Orchard				x				58	65	62	61	42	49	337	214	12	461
Hustonville				x				41	34	55	30	23	34	217	142	10	350
McKinney				x				49	50	33	22	20	28	202	103	11	450
Memorial (Waynesburg)				x						96	66	55	52	269		15	390
Stanford Ind. Dist.								64	51	82	64	46	55	362		18½	903
Stanford								64	51	70	39	34	47	305	190	15	759
Lincoln			x			x				12	25	12	8	57		3½	144
LIVINGSTON COUNTY																	
Co. H.S. (Burna)										146	100	87	87	420		21	630
LOGAN COUNTY																	
County										288	213	161	187	849		50½	2341
Adairville				x						46	42	26	31	145		9	185
Auburn				x						78	52	38	58	226		12½	833
Chandler's Chapel (Auburn)			x							36	35	20	19	110		7	165
Lewisburg				x						73	51	46	45	215		11	931
Olmstead				x						55	33	31	34	153		10	227
Russellville Ind. Dist.					x			93	81	98	50	52	62	436	262	21	760

KENTUCKY HIGH SCHOOLS 1960-61

County District School	Incomplete	Temporary	Emergency	Provisional	Standard	Selective	Compre- hensive	High School Enrollment by Grades						Enr. 9-12	Tchs.	Library Appro- priation	
								7	8	9	10	11	12				Total
LYON COUNTY																	
Co. H. S. (Kuttawa)				x					90	67	55	60	272		16	\$ 399	
MADISON COUNTY																	
Co.—Central (Richmond)							x	104	88	252	189	166	124	923	731	42	1500
Berea Ind. Dist.				x				43	52	51	46	48	42	282	187	13	350
Richmond Ind. Dist.																	
Madison-Model					x			153	159	198	100	98	81	789	477	32	930
Berea Ac. (Pr.)					x					81	55	67	67	270		20	1581
MAGOFFIN COUNTY																	
Co.—Salyersville					x				182	143	116	105	546		24½	1000	
MARION COUNTY																	
County																	
St. Charles (Lebanon)						x		171	139	123	105	538		25	804		
St. Francis								108	87	77	64	336		16	504		
Lebanon Ind. Dist.				x				63	52	46	41	202		9	300		
Lebanon								155	98	107	88	448		20½	900		
Rosenwald		x		x				131	81	91	77	380		16½	750		
St. Augustine (Pr.)								24	17	16	11	68		4	150		
(Lebanon)								45	35	26	27	133		5½	300		
St. Mary's College H.S.									25	25	10	13	73		4	1500	
MARSHALL COUNTY																	
County																	
North Marshall								232	189	169	168	758		37	1140		
(Calvert City)					x			127	100	96	94	417		20+	630		
South Marshall																	
(R. 1, Benton)						x		105	89	73	74	341		17	510		
Benton Ind. Dist.				x				63	48	33	47	191		11	900		

069

KENTUCKY HIGH SCHOOLS 1960-61

169

County District School	Incomplete	Temporary	Emergency	Provisional	Standard	Selective	Compre- hensive	High School Enrollment by Grades						Enr.		Library Appro- priation	
								7	8	9	10	11	12	Total	9-12		Tchs.
MARTIN COUNTY																	
County																	
Inez				x					249	142	125	99	615			31½	\$1408
Warfield				x					139	68	68	45	320			15½	408
									110	74	57	54	295			16	1000
MASON COUNTY																	
Co. H. S. (Maysville, R. 1)					x					174	135	82	101	492		24½	1500
Maysville Ind. Dist.								27	21	144	87	79	83	441		24½	900
Maysville					x					127	87	79	83	376		20	700
John G. Fee Jr.				x				27	21	17				65		4½	200
St. Patrick (Maysville) (Pr.)				x						23	23	20	22	88		7	176
McCRACKEN COUNTY																	
County								214	230	384	322	270	245	1665		82	3421
Heath (W. Paducah)					x			64	90	102	103	80	63	502		25	1255
Lone Oak (Paducah)					x			150	140	141	110	101	90	732	442	34	1098
Reidland (Paducah)					x					141	109	89	92	431		23	1068
Paducah Ind. Dist.								586	594	562	352	360	339	2793		128	2431
Lincoln				x				69	69	98	66	43	36	381	243	19	572
Tilghman											286	317	303	906		47	1359
Brazelton Jr.					x			138	153	196				487		21	
Franklin Jr.					x			124	110	100				334		15	500
Jetton Jr.					x			255	262	168				685		26½	
St. Mary's Ac. (Pr.) (Paducah)				x						51	50	41	35	177		10	354
McCREARY COUNTY																	
County								92	99	259	213	179	128	970		38½	1682
Co. H.S. (Whitley City)				x						186	150	125	93	554		21½	850
Pine Knot				x				92	99	73	63	54	35	416	225	17	832
Stearns Ind. Dist.																	
(High school pupils sent to McCreary Co. H.S.)																	

KENTUCKY HIGH SCHOOLS 1960-61

County District School	Incomplete	Temporary	Emergency	Provisional	Standard	Selective	Compre- hensive	High School Enrollment by Grades							Enr. 9-12	Tchs.	Library Appro- priation
								7	8	9	10	11	12	Total			
McLEAN COUNTY																	
County								39	45	187	148	126	123	668		35	\$1597
Calhoun				x						90	55	47	43	235		12	472
Livermore				x						66	59	50	50	225		11	525
Sacramento				x				39	45	31	34	29	30	208	124	12	600
MEADE COUNTY																	
County																	
Co. H.S. (Brandenburg)										226	170	130	155	681		33½	1022
Flaherty (Vine Grove)				x		x				196	142	98	104	540		26	810
										30	28	32	51	141		7½	212
MENIFE COUNTY																	
Co. H.S. (Frenchburg)				x						68	59	44	43	214		13	1500
MERCER COUNTY																	
Co. H.S. (Harrodsburg)										152	84	87	83	406		20½	609
Burgin Ind. Dist.			x			x				28	23	18	11	80		5	400
Harrodsburg Ind. Dist.						x				108	68	68	61	305		15	1500
METCALFE COUNTY																	
Co. H.S. (Edmonton)				x						94	75	67	59	295		16	650
MONROE COUNTY																	
County								170	166	182	148	148	132	946		45½	1566
Gamaliel				x				44	59	49	43	49	42	286	183	13½	576
Tompkinsville						x		126	107	133	105	99	90	660	427	32	990
MONTGOMERY COUNTY																	
County								207	201	136	96	104	91	835		37	900
Camargo (Mt. Sterling)				x				102	100	63	49	58	43	415	213	17	400
Co. H.S. (Mt. Sterling)						x		105	101	73	47	46	48	420	214	20	500
Mt. Sterling Ind. Dist.						x				96	85	53	73	307		18	1550
Mt. Sterling										60	59	26	49	194		12	1400
DuBois				x						36	26	27	24	113		6	150

692

Co. H.S. (Mt. Sterling)
 Mt. Sterling Ind. Dist.
 Mt. Sterling
 DuBois

105	101	73	47	46	48	420	214	20	500
		96	55	53	73	307		18	1550
		60	59	26	49	194		12	1400
		36	26	27	24	113		6	150

KENTUCKY HIGH SCHOOLS 1960-61

County District School	Incomplete	Temporary	Emergency	Provisional	Standard	Selective	Compre- hensive	High School Enrollment by Grades							Enr. 9-12	Tchs.	Library Appro- priation
								7	8	9	10	11	12	Total			
MORGAN COUNTY																	
County								85	86	165	126	112	88	662		33½	\$ 870
Co. H.S. (West Liberty)					x					103	98	81	61	343		18	515
Ezel								53	56	40	28	31	27	235	126	12	355
Cannel City Jr.			x					32	30	22				84		3½	
MUHENBERG COUNTY																	
County								20	35	443	355	296	319	1468		66	2490
Bremen										74	67	59	59	259		10½	318
Central										134	100	80	86	400		16	600
Drakesboro										86	76	49	56	247		12½	500
Drakesboro Community			x					20	35	37	17	25	16	150	95	8	263
Graham										46	40	33	43	162		8	400
Hughes-Kirk (Beechmont)										86	55	50	59	250		11	609
Central City Ind. Dist.										70	54	59	56	239		12	450
Greenville Ind. Dist.								61	84	58	58	36	54	351	206	17	500
NELSON COUNTY																	
County										205	110	112	115	542		30	1089
Bloomfield										71	41	41	43	196		12	365
Old Ky. Home (Bardstown)										134	69	71	72	346		18	724
Bardstown Ind. Dist.								59	62	57	48	51	29	306	185	18	800
Private:																	
Bethlehem Ac. (Bardstown)										77	36	39	43	195		10	290
Nazareth Ac.										20	17	22	23	82		14	2500
St. Catherine Ac. (New Haven)										60	47	50	47	204		7½	300
St. Joseph's Prep. (Bardstown)										117	70	99	83	369		10½	1350

KENTUCKY HIGH SCHOOLS 1960-61

County District School	Incomplete	Temporary	Emergency	Provisional	Standard	Selective	Compre- hensive	High School Enrollment by Grades						Enr.		Library Appro- priation	
								7	8	9	10	11	12	Total	9-12		Tchs.
NICHOLAS COUNTY																	
Co. H.S. (Carlisle)					x												
Carlisle Ind. Dist.				x				32	86	91	57	46	46	326	240	15½	\$ 525
								45	45	21	15	23	15	151	74	9½	400
OHIO COUNTY																	
County								59	109	348	299	214	215	1244		63	1642
Beaver Dam				x						105	89	73	68	335		16½	421
Centertown				x					39	62	52	31	35	219	180	11	236
Dundee Jr.				x				23	17	22				62		3½	100
Fordsville				x				36	53	46	36	29	30	230		11½	207
Hartford				x						81	81	64	63	289		16	578
Horse Branch			x							32	41	17	19	109		5½	200
OLDHAM COUNTY																	
Co. H.S. (LaGrange)					x					218	135	127	146	626		29	2000
OWEN COUNTY																	
Co. H.S. (Owenton)					x					150	105	70	85	410		19	500
OWSLEY COUNTY																	
Co. H.S. (Booneville)					x			79	47	77	69	40	35	347	221	18	350
PENDLETON COUNTY																	
Co. H.S. (Falmouth)					x	x		56	49	150	111	78	75	414		19	850
Falmouth Ind. Dist.										46	22	17	24	214	109	9½	1450
PERRY COUNTY																	
County								25	164	579	396	280	292	1736		74	2582
Buckhorn				x				25	26	45	49	32	21	198	147	14	250
Combs Memorial (Jeff)				x					138	161	76	78	73	526		22	800
Leatherwood (Slemp)			x							86	59	34	41	220		9	332
Napier (Hazard)					x					287	212	136	157	792		29	1200
Hazard Ind. Dist.					x					152	101	90	86	429		19½	600

694

Leatherwood (Stemp)
 Napier (Hazard)
 Hazard Ind. Dist.

287 212 136 157 792 29 1200
 152 101 90 86 429 19½ 600

KENTUCKY HIGH SCHOOLS 1960-61

695

County District School	Incomplete	Temporary	Emergency	Provisional	Standard	Selective	Compre- hensive	High School Enrollment by Grades						Enr.		Library Appropriation	
								7	8	9	10	11	12	Total	9-12		Tchs.
								PIKE COUNTY									
County										1312	934	728	713	3687		181	\$5265
Belfry					x					332	219	182	195	928		40	1160
Dorton				x						78	48	52	43	226		14	587
Elkhorn City				x						144	91	71	65	371		21	464
Feds Creek				x						113	74	59	53	299		15	375
Hellier				x						105	75	61	58	299		13	373
Johns Creek (Pikeville)				x						131	122	73	71	397		17	496
Mullins (R. 1, Pikeville)				x						118	78	60	72	328		18	530
Phelps				x						100	68	60	57	285		16	431
Virgie					x					191	159	110	94	554		27	850
Pikeville Ind. Dist.				x				128	135	106	80	63	70	582	319	23	1500
POWELL COUNTY																	
Co. H.S. (Stanton)				x					104	134	86	62	43	429	325	19	900
PULASKI COUNTY																	
County								268	268	437	303	269	268	1813		94	2808
Burnside			x					47	60	53	33	29	22	244	137	13	
Co. H.S. (Somerset)					x					164	103	94	102	463		22½	700
Eubank					x			68	71	103	57	51	55	405	266	21½	608
Nancy					x			89	77	64	66	59	57	412	246	21	700
Shopville				x				64	60	53	44	36	32	289	165	16	800
Ferguson Ind. Dist.								37	40	32	30	24	34	197	120	7	900
Science Hill Ind. Dist.			x					(High school pupils sent to Somerset High School)									
Somerset Ind. Dist.					x			178	148		161	132	619		32	950	
ROBERTSON COUNTY																	
Co.—Deming (Mt. Olivet)				x				56	40	41	33	28	27	225	129	11	1500
ROCKCASTLE COUNTY																	
County										258	148	139	137	682		39	1039
Brodhead					x					90	43	41	69	243		14½	375
Livingston				x						84	48	40	29	201		11	304
Mt. Vernon					x					84	57	58	39	238		13½	360

KENTUCKY HIGH SCHOOLS 1960-61

969

County District School	Incomplete	Temporary	Emergency	Provisional	Standard	Selective	Compre- hensive	High School Enrollment by Grades							Enr.		Library Appropriation	
								7	8	9	10	11	12	Total	9-12	Tchs.		
ROWAN COUNTY																		
County																		
Co. H.S. (Morehead)				x				96	130	201	132	118	80	757			31½	\$1000
Haldeman								77	97	166	116	118	80	654	480		26½	1000
Morehead College Trig. (St.)	10				x			19	33	35	16			103			5	
								30	29	33	25	26	29	172	113		13	1000
RUSSELL COUNTY																		
Co. H.S. (Jamestown)					x						215	143	143	134	635		27	900
SCOTT COUNTY																		
Co. H.S. (Georgetown)						x				144	117	122	84	467			24½	701
Georgetown Ind. Dist.						x				87	71	43	51	252			12½	500
Cardome Ac. (Georgetown) (Pr.)				x						12	13	12	9	46			4	250
SHELBY COUNTY																		
Co. H. S. (Shelbyville)						x					210	162	133	134	639		33	6000
Shelbyville Ind. Dist.						x		124	131	101	79	57	59	551	296		22	750
Lincoln Inst. (St.)						x				131	113	87	74	405			22	800
(Lincoln Ridge)																		
SIMPSON COUNTY																		
County								252	240	187	158	120	143	1100			54½	1751
Senior (Franklin)						x					137	99	125	361			20	542
Junior (Franklin)						x		209	211	144				564			24	846
Lincoln (Franklin)				x				43	29	43	21	21	18	175	103		10½	363
SPENCER COUNTY																		
Co.—Taylorsville						x					64	64	36	42	206		10½	350
TAYLOR COUNTY																		
Co. H.S. (Campbellsville)						x				168	126	89	100	483			23½	1000
Campbellsville Ind. Dist.										139	95	89	74	397			21	1775
Campbellsville						x				113	77	74	53	317			15½	700
Durham			x							26	18	15	21	80			5½	575

Campbellsville Ind. Dist.
Campbellsville
Durham

113 77 74 59 80
26 18 15 21 80

5½ 575

KENTUCKY HIGH SCHOOLS 1960-61

County District School	Incomplete	Temporary	Emergency	Provisional	Standard	Selective	Compre- hensive	High School Enrollment by Grades						Enr. 9-12	Tchs.	Library Appropriation	
								7	8	9	10	11	12				Total
TODD COUNTY																	
County								86	58	203	153	138	145	783		43	\$1495
Clifty				x				35	24	40	36	23	29	187	128	11½	286
Co. H.S. (Elkton)				x						82	68	52	57	259		13	500
Co. Trg. (Elkton)				x				18	14	34	18	36	28	148	116	9	473
Guthrie				x				33	20	47	31	27	31	189	136	9½	236
TRIGG COUNTY																	
County								151	136	164	105	94	80	730		35	1300
Co. H.S. (Cadiz)				x				114	111	141	105	94	80	645	420	31	1300
McUpton Jr.			x					37	25	23				85	4		
TRIMBLE COUNTY																	
Co. H.S. (Bedford)					x			111	112	103	61	52	49	488	265	19½	500
UNION COUNTY																	
County										224	167	132	141	664		37	1100
Dunbar (Morganfield)		x								16	14	16	10	56		5	100
Morganfield										113	63	57	53	286		16	500
Sturgis										95	90	59	78	322		16	500
St. Agnes (Uniontown) (Pr.)		x								23	19	10	14	66		4	132
St. Vincent (Pr.)			x							66	51	48	37	202		10	303
WARREN COUNTY																	
County								35	40	427	288	243	200	1233		67	2402
Alvaton				x						59	36	33	28	156		9½	350
Bristow								35	40	30	30	25	12	172	97	9	258
Co. H.S. (Bowling Green)										235	154	118	104	611		29	1200
N. Warren (Smiths Grove)				x						54	34	35	28	151		10	378
Richardsville				x						49	34	32	28	143		9½	216
Bowling Green Ind. Dist.										270	219	140	163	792		46½	1128
Bowling Green										190	156	105	122	573		31½	831
High Street										80	63	35	41	219		15	297
Western Ky. St. College																	
Trg. Sch. (Bowling Green) (St.)								35	45	58	52	35	43	268	188	15	700

697

KENTUCKY HIGH SCHOOLS 1960-61

County District School	Incomplete	Temporary	Emergency	Provisional	Standard	Selective	Compre- hensive	High School Enrollment by Grades						Enr.		Library Appropriation	
								7	8	9	10	11	12	Total	9-12		Tchs.
WASHINGTON COUNTY																	
County																	
Fredericktown (Springfield)			x						111	79	75	81	346		18	\$ 520	
Mackville			x						37	34	29	26	126		6	189	
Willisburg			x						27	24	19	21	91		6	137	
Springfield Ind. Dist.				x					47	21	27	34	129		6	194	
St. Catharine Ac. (Fr.)				x					57	51	52	35	195		9½	450	
									34	32	24	33	123		10	246	
WAYNE COUNTY																	
Co. H.S. (Monticello)					x				167	131	98	100	496		21	2000	
Monticello Ind. Dist.									60	36	37	32	165		10½	436	
WEBSTER COUNTY																	
County									152	138	112	98	500		26	679	
Clay				x					42	31	40	30	143		8	213	
Dixon			x						43	48	32	25	148		6½	125	
Sebree			x						40	25	24	25	114		4½	200	
Slaughters			x						27	34	16	18	95		5	141	
Providence Ind. Dist.								86	75	70	66	58	66	421	19	640	
Providence				x				65	65	56	51	48	45	330	14	500	
Rosenwald			x					21	10	14	15	10	21	91	200 60	5	140
WHITLEY COUNTY																	
County									389	252	194	205	1040		49	1512	
Pleasant View (Williamsburg)				x					115	51	53	44	263		11½	395	
Poplar Creek (Carpenter)				x					70	46	39	34	189		11	286	
Rockholds			x						79	70	45	57	251		10½	325	
Woodbine				x					125	85	57	70	337		16	506	
Corbin Ind. Dist.					x				120	96	84	94	394		18½	2000	
Williamsburg Ind. Dist.								95	74	90	64	50	54	427	258	18½	850
St. Camillus Ac. (Fr.) (Corbin)		x								18	12	14	13	57		6	150

17: EdE
2:

U.S.
196
MS.
Cope

SEP 2 1966

University of Kentucky

Ent

Vo

LIBRARY
UNIVERSITY OF KENTUCKY