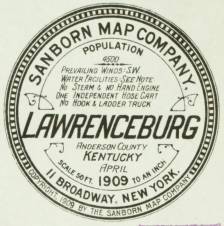


WATER FACILITIES Lawrenceburg Water Works Co. has a direct pumping system, supply from 5 Wells is pumped direct through mains by one motor. Each motor capacity is 4000 Gals. per hour, to 2000 ft. Stand Pipe. Gravity pressure of 40 lb. is maintained. St. Center 5000 gal. per day. Fire hydrants set up in 2 blocks of Water pipes. Telephone Mains. Daily consumption about 40,000 Gals. System big as 1000 ft.

FIRE DEPT. Lawrenceburg Fire Dept. has one horse. Motor cars, 800 H.P. and 3 ladders. Horses hired from vicinity for the service. Public fire alarm.

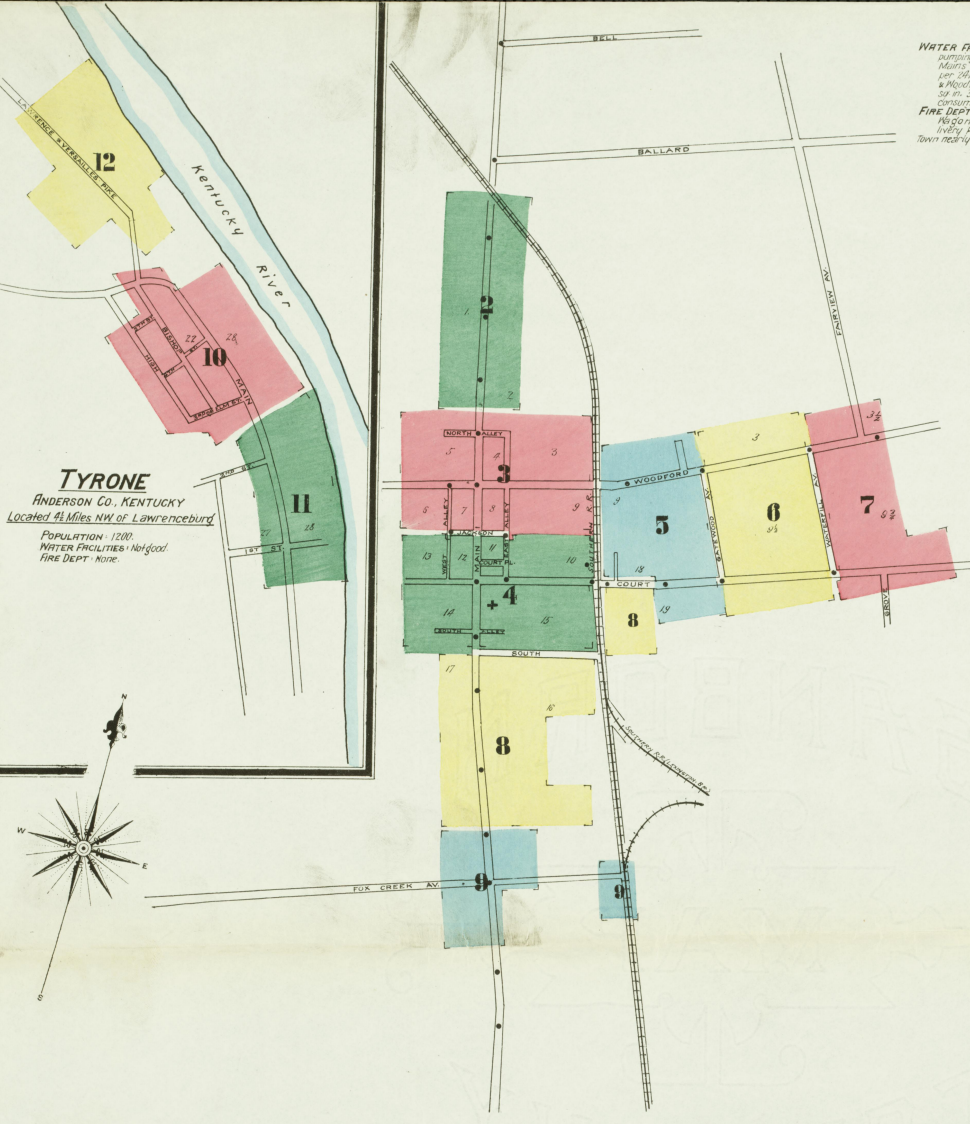
Town nearly level. Main Streets Transformed Public Light System.



INCLUDING
INDEX TYRONE

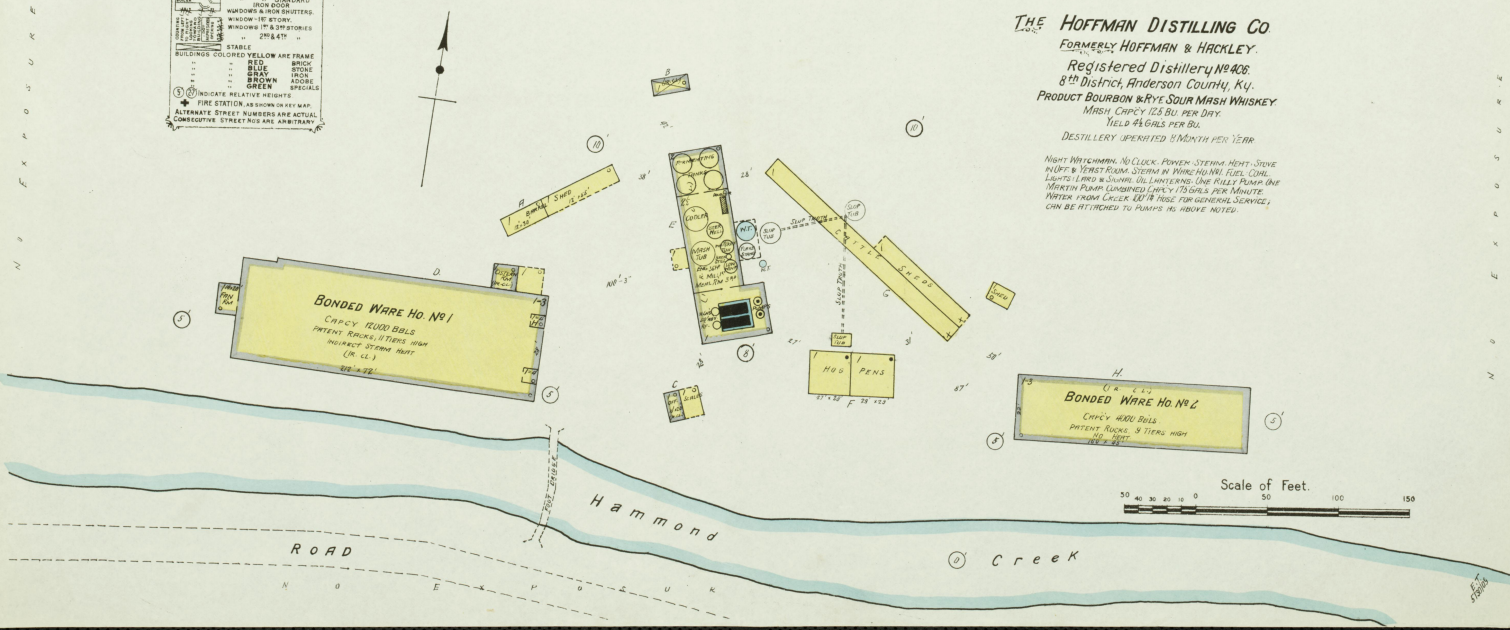
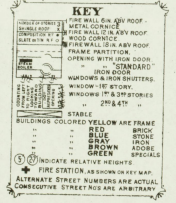
STREETS.	NUMBER	Baptist Church, B	NUMBER
Bishop, at Tyrone,	10	Belle of Anderson Distillery,	14
Bonds Mill Pike,	10	Bond & Lillard Distillery,	14
C			
Camden & Lawrenceburg Pike, Camden	16	Brown, J. T. S. & H. Distillery,	15
Country Road,	7	Christian Church,	15
Court,	100-229	Buntan, J. D., Tobacco Warehouses,	3
"	229-252	"	3
"	251-293	C	
"	293-297	Catholic Church,	5
"	1401-1416, arbitrary	Cedar Brook Distillery,	13 & 14
"	1391-1393, arbitrary	Christian Church,	4
"	1594-1597, "	"	5
"	1598-1599, "	City Hall, at Tyrone,	12
"	1517-1546, "	Clover Bottom Distillery,	12
"	1601-1640, "	County Court House and Jail,	4
"	Place,	D	
E			
East Alley,	3 & 4	Day, J. E., Distillery,	16
Elm, at Tyrone,	10	Dawling Co. Distillery,	11
F			
Fairview Ave.,	7	J. & Co., Heading Mill,	5
Fifth, at Tyrone,	10	M. M., Distillery,	14
Fox Creek Ave.,	9	Eagle Roller Mills,	3
Fourth, at Tyrone,	9	Fire Department,	4
G			
Gatewood Ave.,	703-714, arbitrary	H	
"	715-726, "	Hawkins & Bond Distillery,	15
H			
High, at Tyrone,	10	High School,	3
I			
Jackson, N. S., West Alley to East Alley	73	Hoffman & Hackley Distilling Co.,	1
S. S.,	4	Distilling Co.,	1
L			
Lawrenceburg & Tyrone Pike,	9	Kentucky Distill'g & W. H. Co., 10 to 14	4
"	12	Lawrenceburg Electric Light Co. Plant,	9
"	at Tyrone,	Supply Co.,	8
"	at Tyrone,	Theater,	8
"	at Tyrone,	Water Works Pump'g Sta.,	3
"	at Tyrone,	M	
"	at Tyrone,	McBrayer Lumber Co.,	3
"	at Tyrone,	W. H., Distillery,	13
"	at Tyrone,	Methodist Episcopal Church,	4
"	at Tyrone,	"	at Tyrone,
"	at Tyrone,	Murphy, E. & Co., Distillery,	16
"	at Tyrone,	O	
"	at Tyrone,	Old Prentice Distillery,	15
N			
North Alley,	3	Post Office,	3
R			
Road, at McBrayer Station,	7	Presbyterian Church,	3
S			
Second, at Tyrone,	11	Public Library,	3
South,	1201-1207, arbitrary	School, at Tyrone,	10
"	1208-1214, "	R	
"	Alley,	Rash Bros., Flour Mill,	7
T			
Third, at Tyrone,	10	Ripey Bros., Coal Yard,	8
W			
Waterfall,	801-810, arbitrary	Ripey Bros. Distillery Co.,	9
"	811-820, "	T. R., Distillery,	12
West Alley,	3 & 4	Saffell, W. B., Distillery,	15
Wilson Ferry Pike,	116-302	Searcy, W., Distillery,	15
Woodford,	303-318	Southern R. R. Deposits,	4
"	319-342	Standard Oil Co.,	5
"	1201-1221, arbitrary	T	
SPECIALS.			
A			
Anderson County Distillery,	16	Thomas Bros., Machine Shop,	10
Distilling Co.,	12	Thorman, R. L., Lumber Yard,	4
News, The, Printing,	4	V	
"	4	Van Arsdell, J. C., Carriage Painting,	6
W			
Walker, J. R., Distillery,	14	W	
Watertill, J. M. & Co., Distillery,	15	Walker, J. R., Distillery,	14
"	4	Watertill, J. M. & Co., Distillery,	15
"	4	"	& Frasier, Distillery,

* Indicates only one side of Street shown.

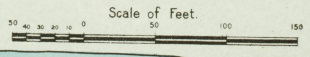


TYRONE
ANDERSON CO., KENTUCKY
Located 4 Miles NW of Lawrenceburg
POPULATION 1200
WATER FACILITIES - Waterford
FIRE DEPT. - None

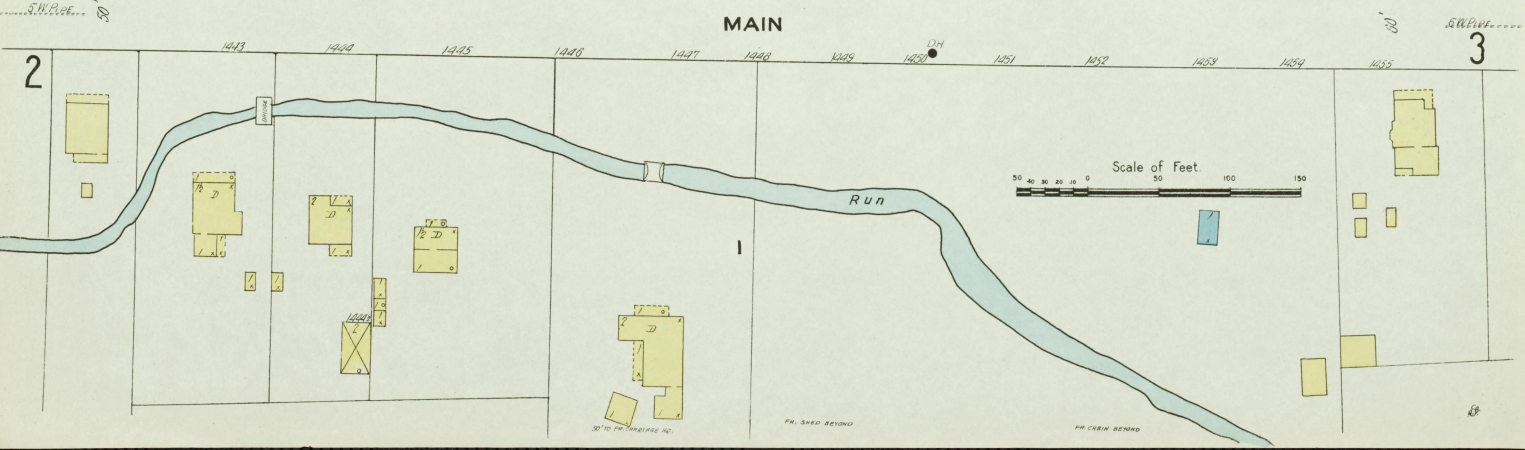
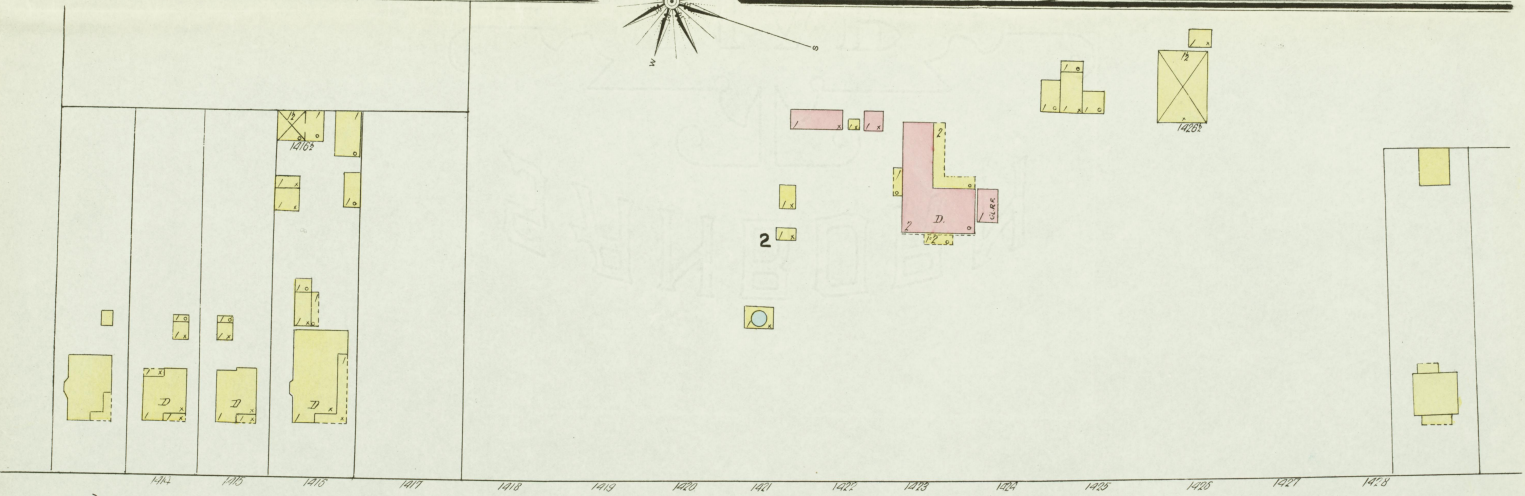
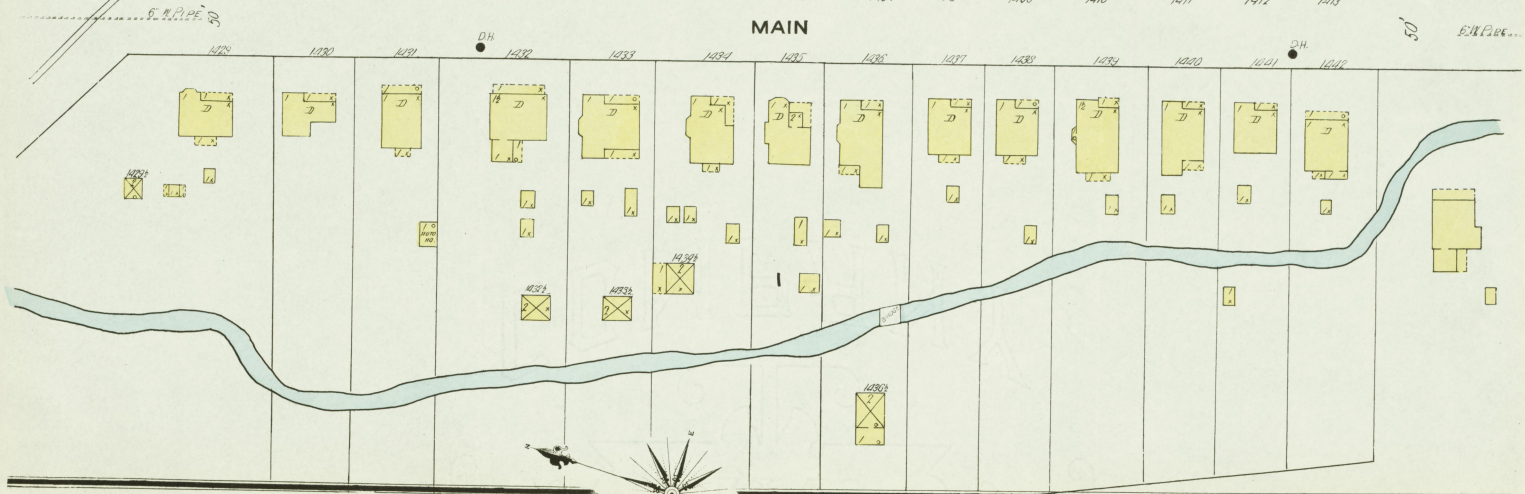
Located 5 Miles E. of Lawrenceburg, Ky.



THE HOFFMAN DISTILLING CO.
FORMERLY HOFFMAN & HACKLEY.
Registered Distillery No. 408.
8th District, Anderson County, Ky.
PRODUCT BOURBON & RYE SOUR MASH WHISKERY
MASH CAPACITY 125 BU. PER DAY.
YIELD 24 GALS. PER BU.
DISTILLERY OPERATED 11 MONTHS PER YEAR.
NIGHT WATCHMAN. NO CLOCK. POWER SYSTEM. HEAT. STEAM.
MORT & YEAST ROOMS. SYSTEM BY WARE HOUSING. FUEL COAL.
LARGE PENS & LUMBER SHEDS. LANDING ONE FULLY PUMP ONE.
MORTAR PUMP. LUMBER CAPACITY 125 GALS. PER MINUTE.
WATER FROM CREEK. 10" HOSE FOR GENERAL SERVICE,
CAN BE RETURNED TO PUMP & HOUSE NOTES.



2
APR. 1909
LAWRENCEBURG
Ky.

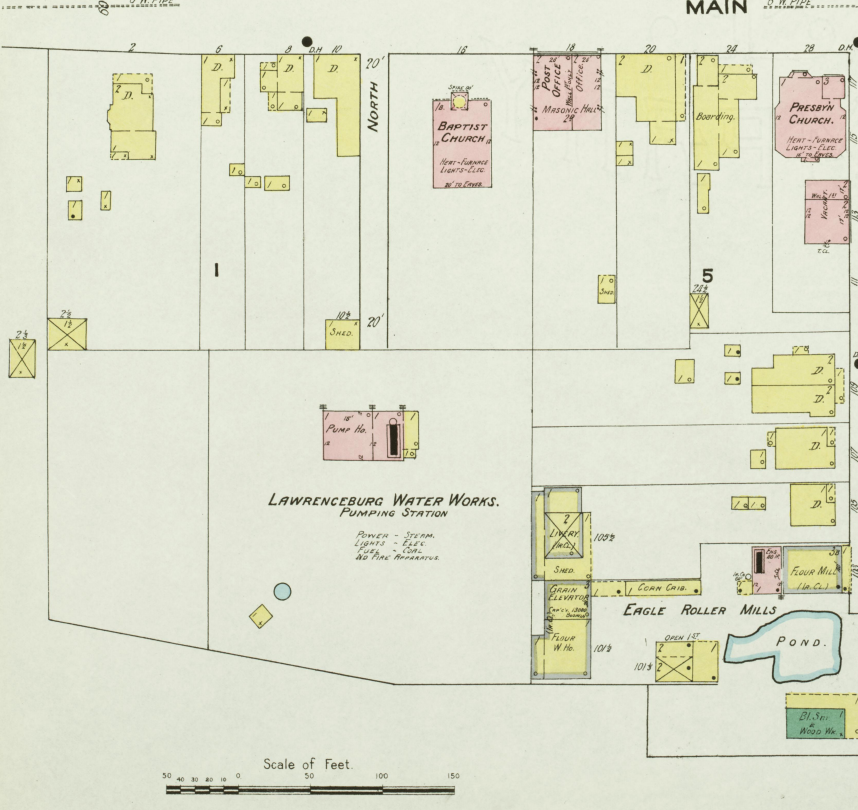
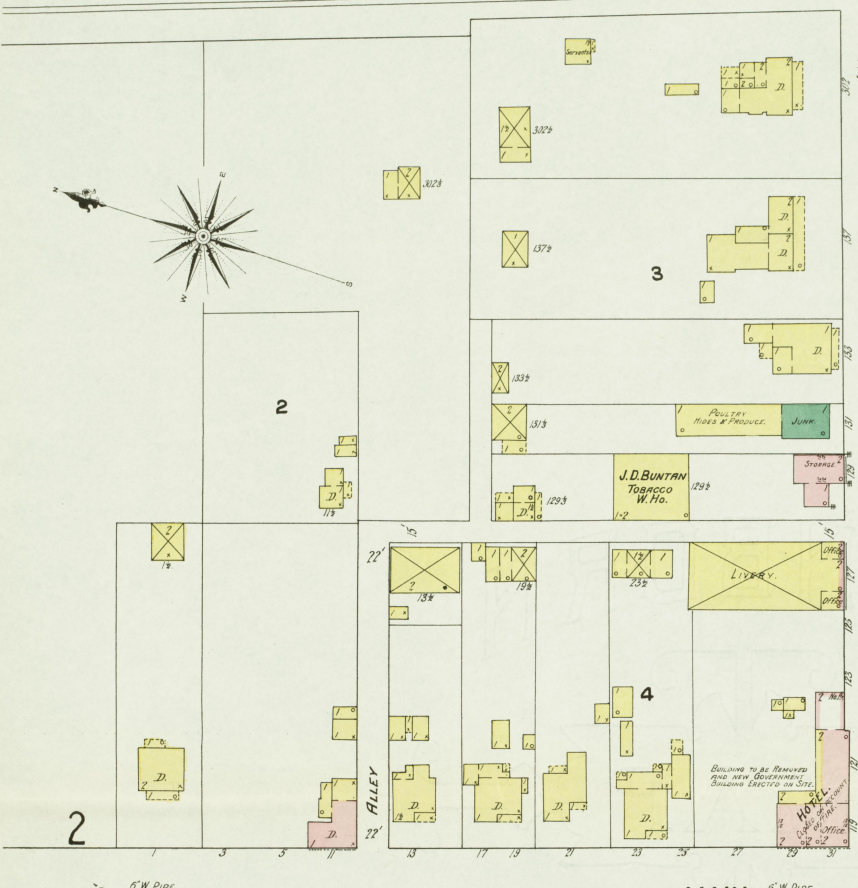
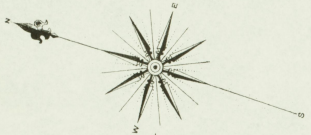


5

3

SOUTHERN R. R.

APR 1909
LAWRENCEBURG
Ky.



EAGLE ROLLER MILLS

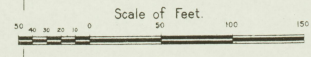
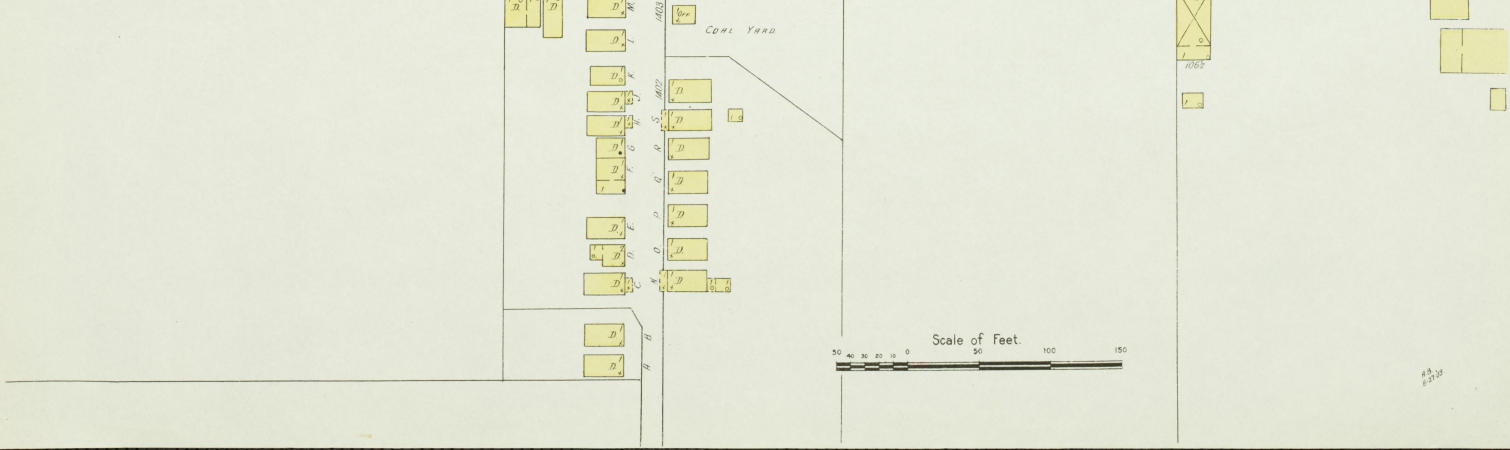
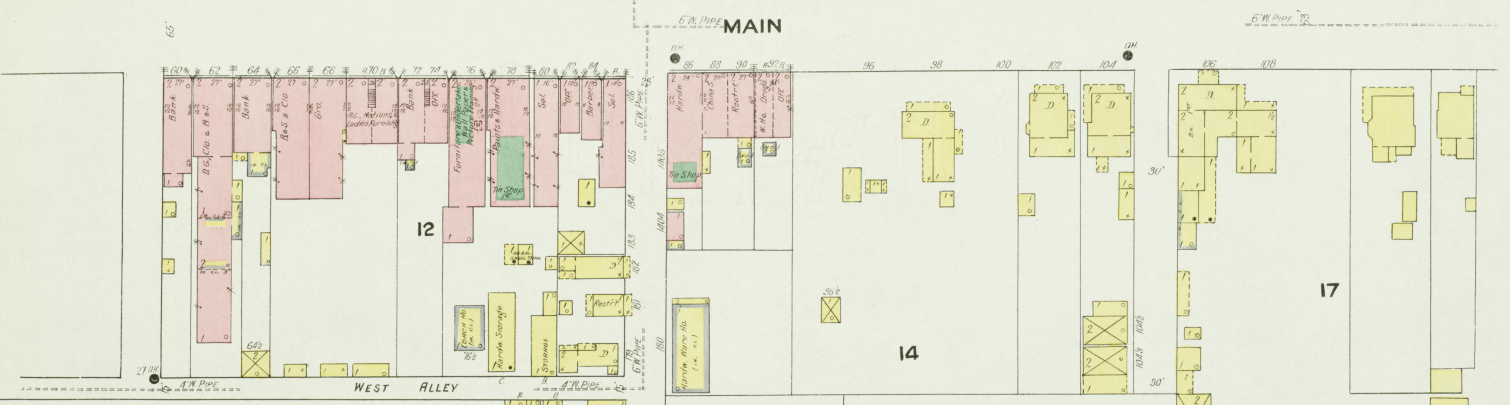
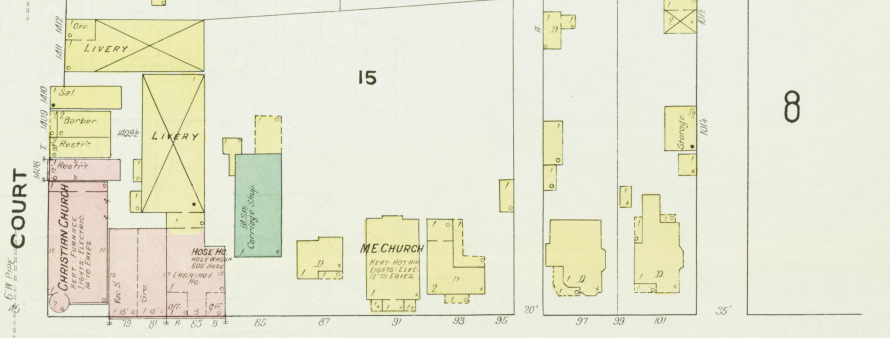
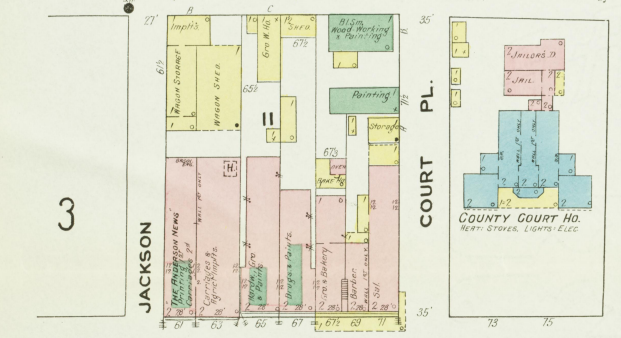
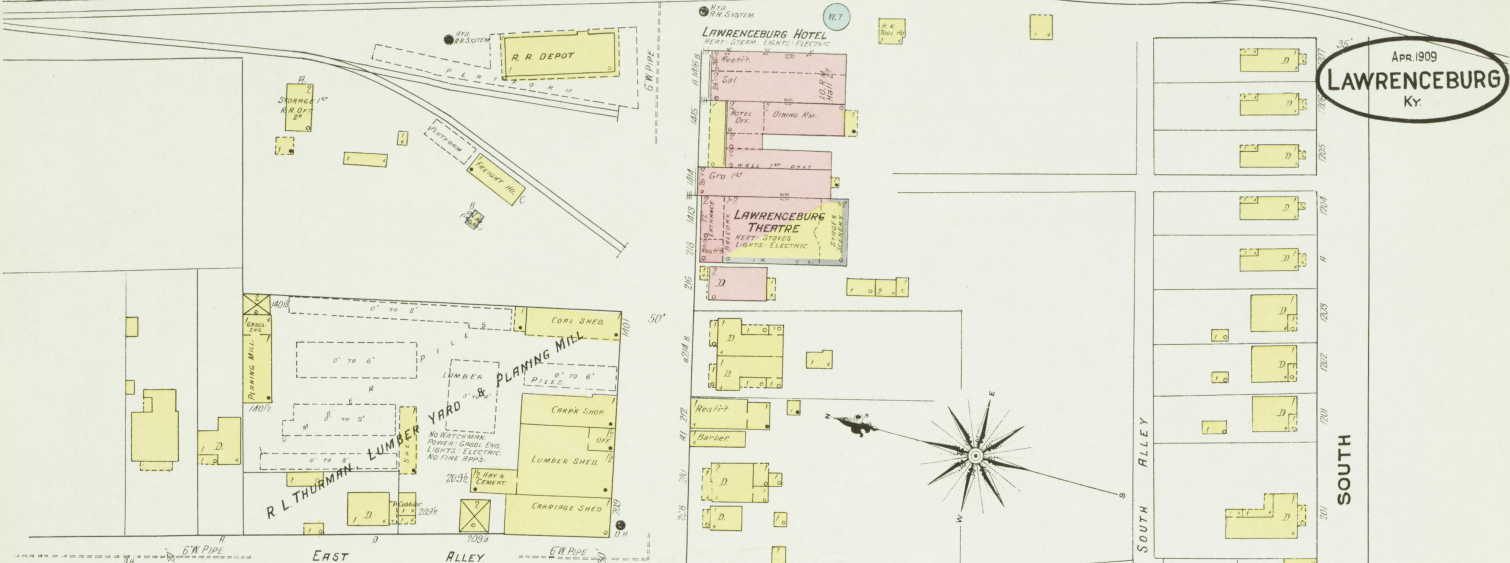
NO WATCHMAN. POWER-STEAM.
LIGHTS ELEC. HEAT-STORES.
FUEL-COAL.
FIRE PAILS & BARRELS DISTRIBUTED.

MACHINERY.

- 6 1ST
 - 2 STAND DOUBLE ROLLS.
 - 3 THREE HIGH CRAM MILL
 - 4 FLOUR PROMERS.
 - 1 BURN PACHER.
- 2ND
 - 2 PUMPKINS.
 - 2 DUST COLLECTORS.
 - 1 GLEACHERS.
 - 1 SUCTION FAN.
- 3RD
 - 2 GRINDERS.
 - 1 DOUBLE SCOURER.
 - 1 DUST COLLECTOR.
 - 1 SEPARATOR.
 - 1 CRAM CUSTER.
 - 2 FEELS.
 - 1 CORN CLEANER.

5 8 4
SOUTHERN RAILROAD

Apr. 1909
LAWRENCEBURG
Ky.



APR 1909
LAWRENCEBURG
KY.

5

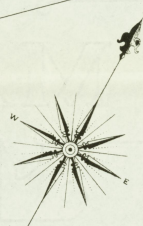
3

WOODFORD

3

GATEWOOD AV.

6



18

4

BOONE HALL
W.M.S. Co.

MC CHURCH
W.M.S. Co.

CHRISTIAN CHURCH
W.M.S. Co.

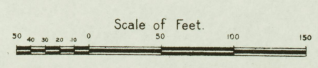
JOHN DOWLING & CO
No RESTAURANT
No MEAT
LIGHT ELECTRIC
FURN. CLOSET & CAB.

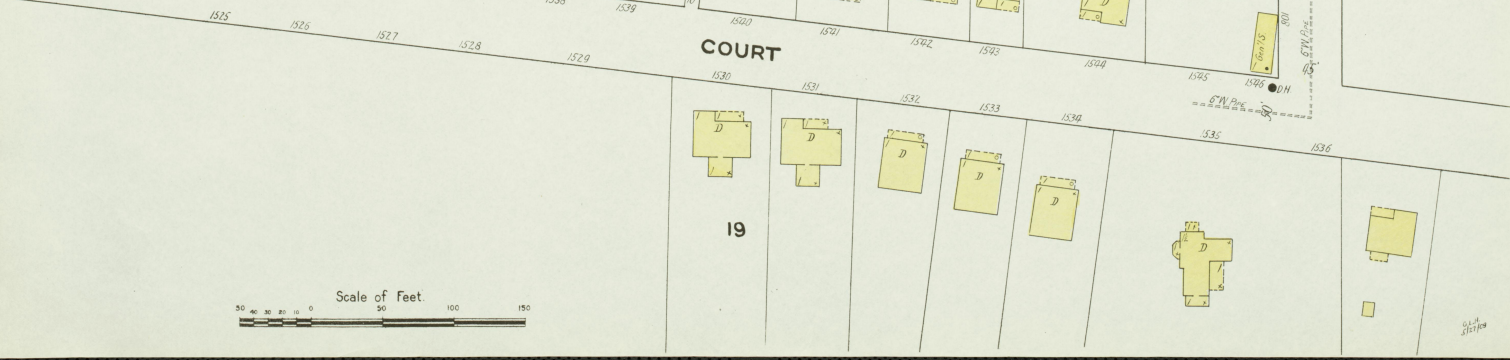
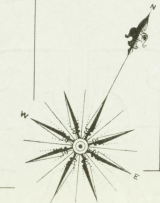
CATHOLIC CHURCH
W.M.S. Co.

COURT

8

19

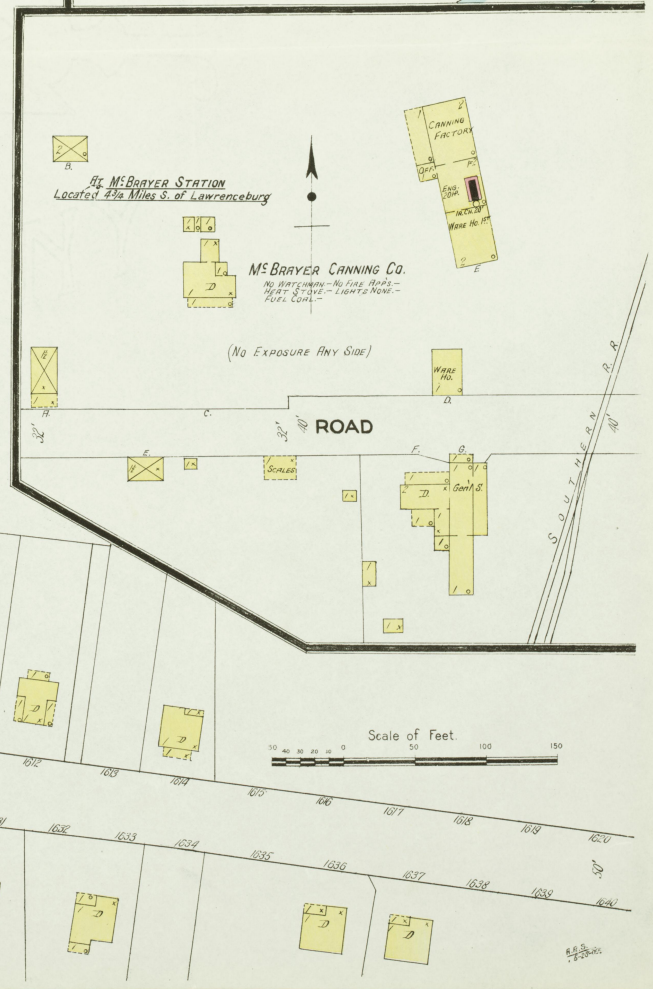
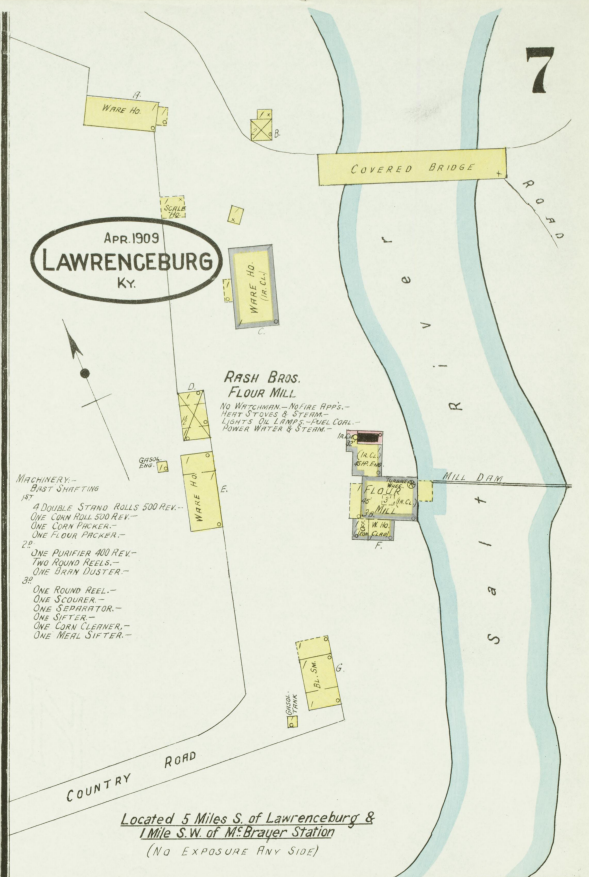




Scale of Feet.
0 50 100 150

J. C. VAN ARSDELL
CONVERSE
RIVERVIEW
HARRISON
SLOAN
B. SW
H. L.





APR. 1909
LAWRENCEBURG
Ky.

8

SOUTH

17

16

5 COURT

19

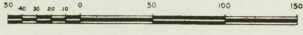
MAIN

LAWRENCEBURG
SUPPLY CO.
LUMBER STORAGE

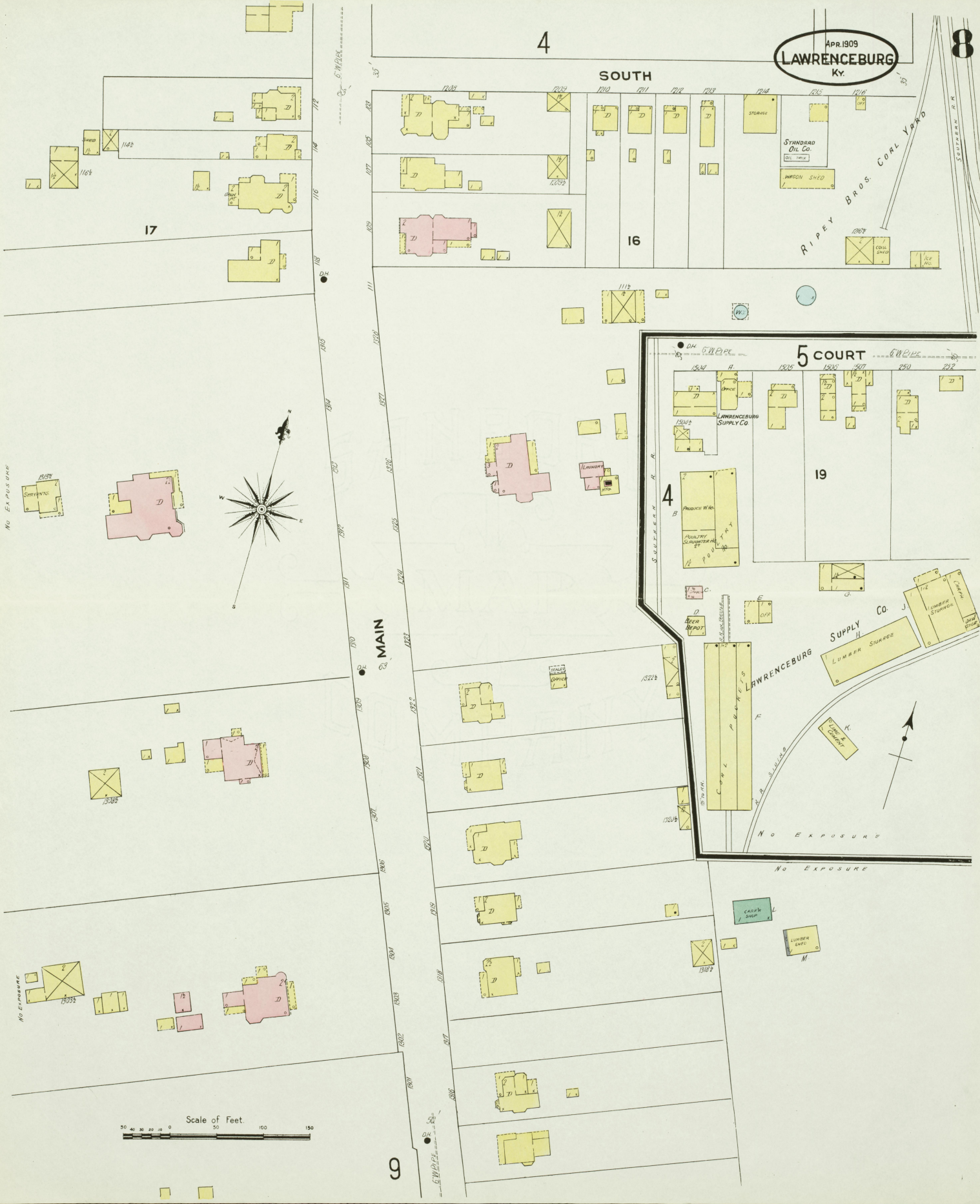
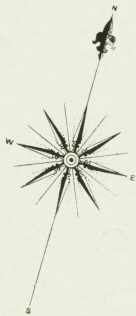
NO EXPOSURE

NO EXPOSURE

Scale of Feet.



9



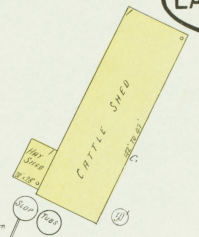
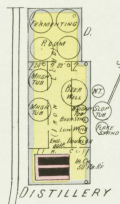
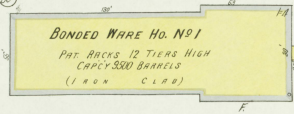
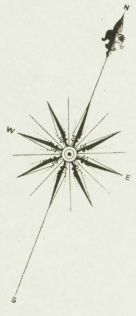
APR 1909
LAWRENCEBURG
Ky.

LAWRENCEBURG & TYRONE PIKE

RIPY BRO'S DISTILLERY CO. INC.

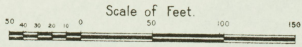
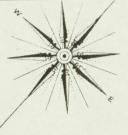
Registered Distillery No 6-8th District-Anderson Co. Kentucky

PRODUCT BOURBON SWISS MASH WHISKEY.
MASH CAPACITY 165 BUSHELS PER DAY.
YIELD 4 1/2 GALLONS PER BUSHEL.
OPERATED ABOUT 5 MONTHS PER YEAR.
STEAM DOUBLE.
NIGHT WATCHMAN, NO CLOCK, POWER SYSTEM.
BOILER STOVE IN OFF & YEAST ROOM.
LIGHTS: DYNAMO, FUEL: COAL.
WATER FROM DITCH BY MASHING PUMP.
CAPACITY 300 GALLONS PER MINUTE, NO FIRE TAP.



Located 4 Miles S.E. of Lawrenceburg





KENTUCKY DISTILLERIES & WAREHOUSE CO.
Kentucky River

AT TYRONE, KY.
 Located 4 1/2 Miles S.E. of Lawrenceburg

APR. 1909
LAWRENCEBURG
 Ky.

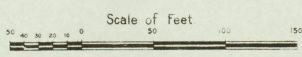
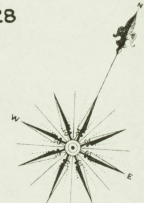
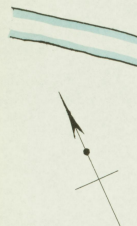
THE DOWLING COMPANY
 FORMERLY JOHN & EDWARD DOWLING
 UNDER STYLE OF WATERFILL & FRAZIER
 Registered Distillery No. 41.
 8th District Anderson County, Ky.

PRODUCT BOURBON SOUR MASH WHISKEY
 MASH CAPACITY 200 BUSHEL PER DAY
 YIELD 470 GALS. PER BUSHEL
 OPERATED ABOUT 6 MONTHS PER YEAR
 STEAM COILS
 NIGHT WATCHMAN, NO CLOCK POWER,
 STEAM, HEAT, STOVE IN OFFICE &
 REST ROOM, FUEL, COAL, LIGHTS, CANDLES
 WATER FROM SPRING BY GRAVITY
 NO FIRE APPARATUS

BONDED W. H. O. No. 3
 ANNEX DISTILLERY No. 112
 PAT RACKS 7 TIERS HIGH
 CAPACITY 6000 BARRELS
 (CASH, CASH)
 VACANT
 FORMERLY BONDED W. H. O.

KENTUCKY DISTILLERIES & WAREHOUSE CO.
 Registered Distilleries No. 418 & No. 112.
 See Sheet No. 12.

NIGHT & DAY WATCHMAN, NO CLOCK
 HEAT, STEAM IN WARE HOUSES,
 LIGHTS, LAMP OIL, ANTENS



APR 1909
LAWRENCEBURG
KY

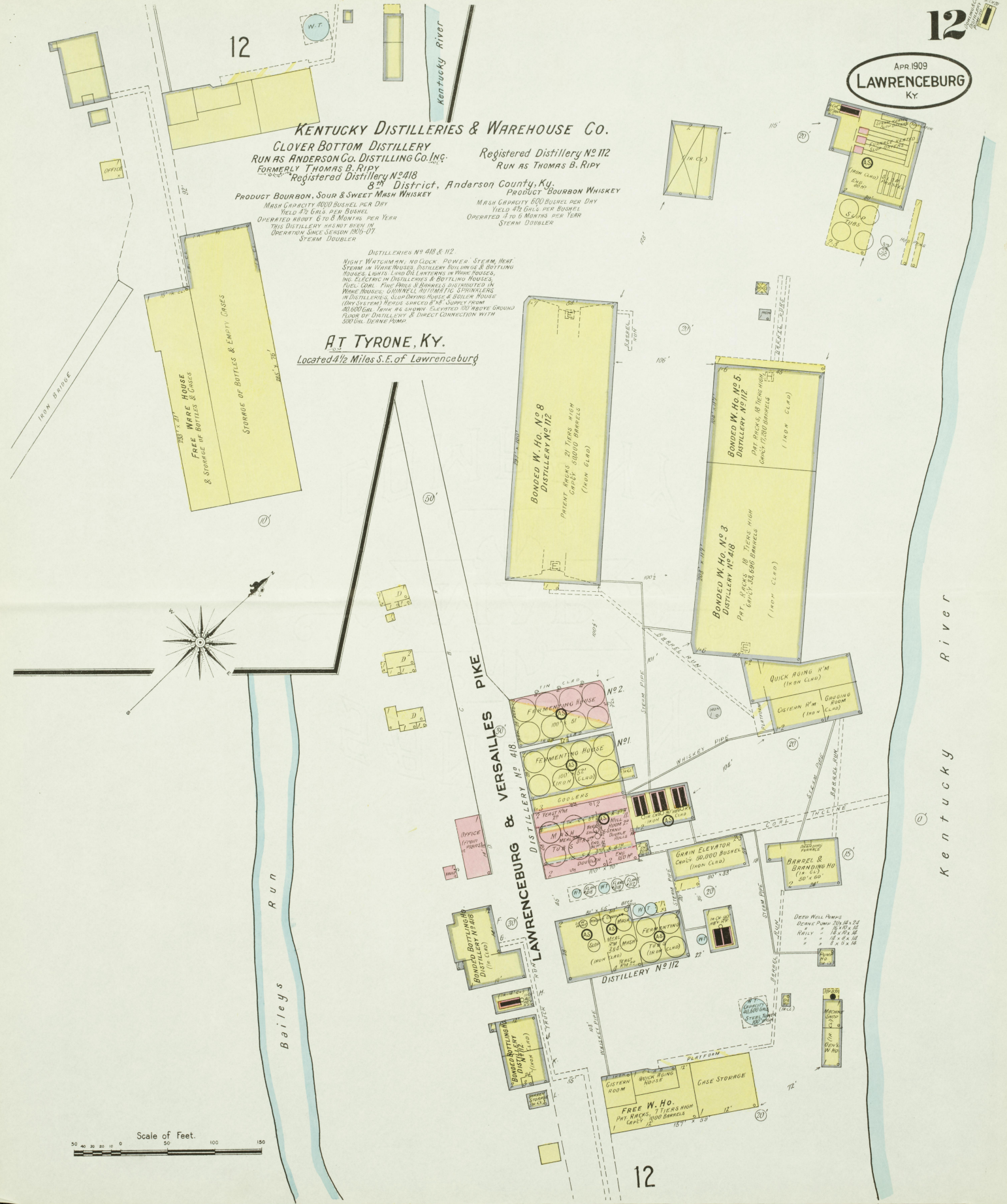
KENTUCKY DISTILLERIES & WAREHOUSE CO.

CLOVER BOTTOM DISTILLERY
RUN AS **ANDERSON CO. DISTILLING CO. INC.** Registered Distillery No 112
FORMERLY **THOMAS B. RIPPY** RUN AS **THOMAS B. RIPPY**
DISTRICT, Anderson County, Ky.
Product Bourbon, Sour & Sweet Mash Whiskey

MASH CAPACITY 8000 BUSHEL PER DAY
YIELD 70 GALS. PER BUSHEL
OPERATED ABOUT 6 TO 8 MONTHS PER YEAR
THIS DISTILLERY HAS NOT BEEN IN OPERATION SINCE SEASON 1900-01
STEAM DOUBLER

DISTILLERIES NO 418 & 112
NIGHT WATCHMAN, NO CLOCK, POWER, STEAM, HEAT, STEAM IN WAREHOUSES, DISTILLERY BOILINGS & BOTTLING HOUSES, LIGHTS, LAMP OIL LANTERNS IN WAREHOUSES, NO ELECTRIC IN DISTILLERIES & BOTTLING HOUSES, FUEL COAL, FIRE BRICKS & BRICKS DISTRIBUTED IN WAREHOUSES, SMALL PORTLAND CEMENTS IN DISTILLERIES, SLOP DRYING HOUSE & BOILER HOUSE (DRY SYSTEM) HEADS SURGED FROM SUPPLY FROM 400 FT. HIGH AS SHOWN, ELEVATED 200 FEET ABOVE GROUND FLOOR OF DISTILLERY & DIRECT CONNECTION WITH 300 FT. DEEP PUMP.

AT TYRONE, KY.
Located 1/2 Miles S.E. of Lawrenceburg



Scale of Feet.
0 50 100 150



KENTUCKY DISTILLERIES & WAREHOUSE CO.
CEDAR BROOK DISTILLERY

FORMERLY W. H. MC BRAYER
Registered Distillery No. 44
8th District, Anderson County, Ky.

PRODUCT BOURBON HAND MADE SOUR MASH WHISKEY
MASH CAPACITY 1800 BUSHEL PER DAY
YIELD 17 1/2 GALS PER BUSHEL
OPERATED 5 MONTHS PER YEAR
STEAM DOUBLER

ONE NIGHT WATCHMAN AT DISTILLERY. NO CLOCK
BRAND BUSES
POWER SYSTEM, HEAT STEAM IN WARE HOUSES, STOVE IN
KITCHENS, FUEL OIL, LIGHTS LAND OIL LAMPING
TWO BARRELS 5 PAILS DISTRIBUTED IN WARE HOUSES,
BRINNELL AUTOMATIC SPINNERS IN DISTILLERY &
BOLTON NO. 100 SYSTEM REELS BONDED BY
PULL BY 2 1/2 TONS OIL SYSTEM ON HILL EAST OF DISTILLERY,
ELEVATED 150 WHEELS GROUND FLOOR OF DISTILLERY,
CISTERN FILLED BY 7 FOUNTAIN PUMPS, SIZES 8 X 5 X 10 & 8 X 5 X 12
WATER SUPPLY FROM KENTUCKY RIVER

Located 3 1/2 Miles E. of Court Ho.
NO EXPOSURE ANY SIDE



WARE HOUSES ON GROUND
ABOUT 300 HIGHER THAN
DISTILLERY

Scale of Feet
0 50 100 150

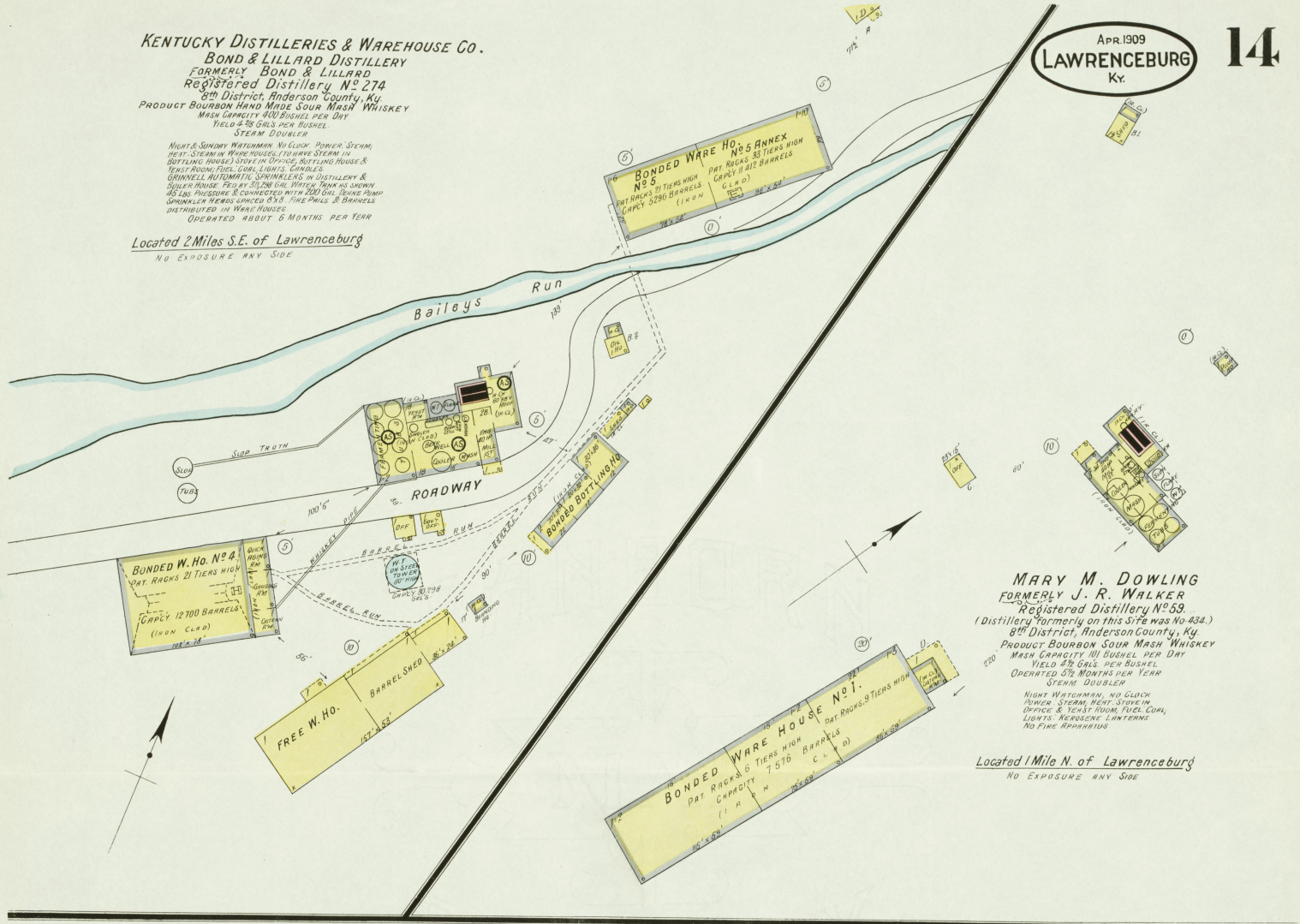
KENTUCKY DISTILLERIES & WAREHOUSE CO.

BOND & LILLARD DISTILLERY
 FORMERLY BOND & LILLARD
 Registered Distillery No. 274
 8th District, Anderson County, Ky.
 PRODUCT: BOURBON HAND MADE SOUR MASH WHISKEY
 MASH CAPACITY 800 BUSHEL PER DAY
 YIELD 475 GALS. PER BUSHEL
 STEAM DOUBLER

NIGHT & SUNDAY WATCHMAN, NO CLOCK, POWER, STEAM, HEAT, STEAM IN WARE HOUSES, TO HAVE STEAM IN BOTTLING HOUSE, STEAM IN OFFICE, BOTTLING HOUSE & YEAST ROOM, FUEL COAL, LIGHTS, CANDLES, GRINNELL AUTOMATIC SPRINKLERS IN DISTILLERY & BOTTLING HOUSE, FED BY 30" GAL. WATER PUMP AS SHOWN, 45 LBS. PRESSURE & CONNECTED WITH 200 GAL. TANK, PUMP SPRINKLER HEADS SPACED 8' X 8', FINE PAULS & BARRELS DISTRIBUTED IN WARE HOUSES
 OPERATED ABOUT 6 MONTHS PER YEAR

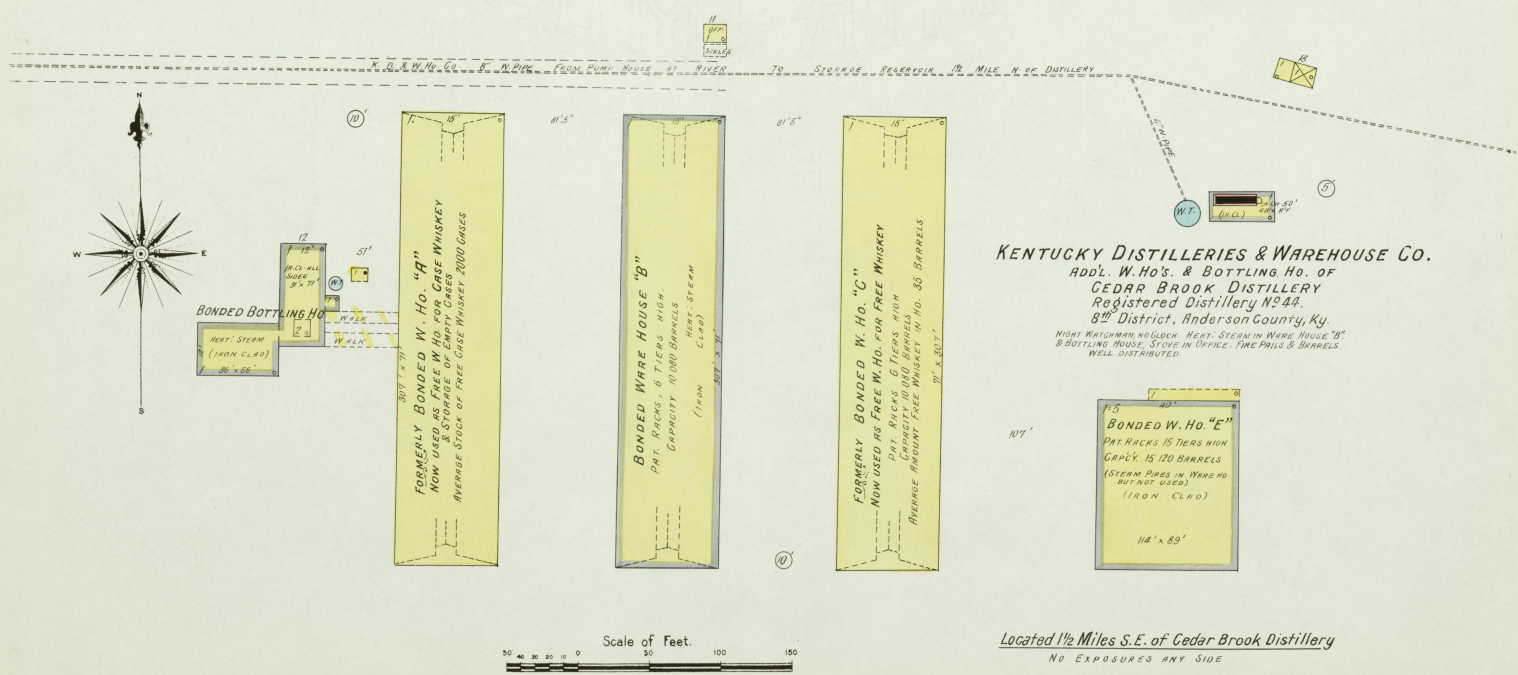
Located 2 Miles S.E. of Lawrenceburg
 NO EXPOSURE ANY SIDE

APR 1909
LAWRENCEBURG
 Ky.



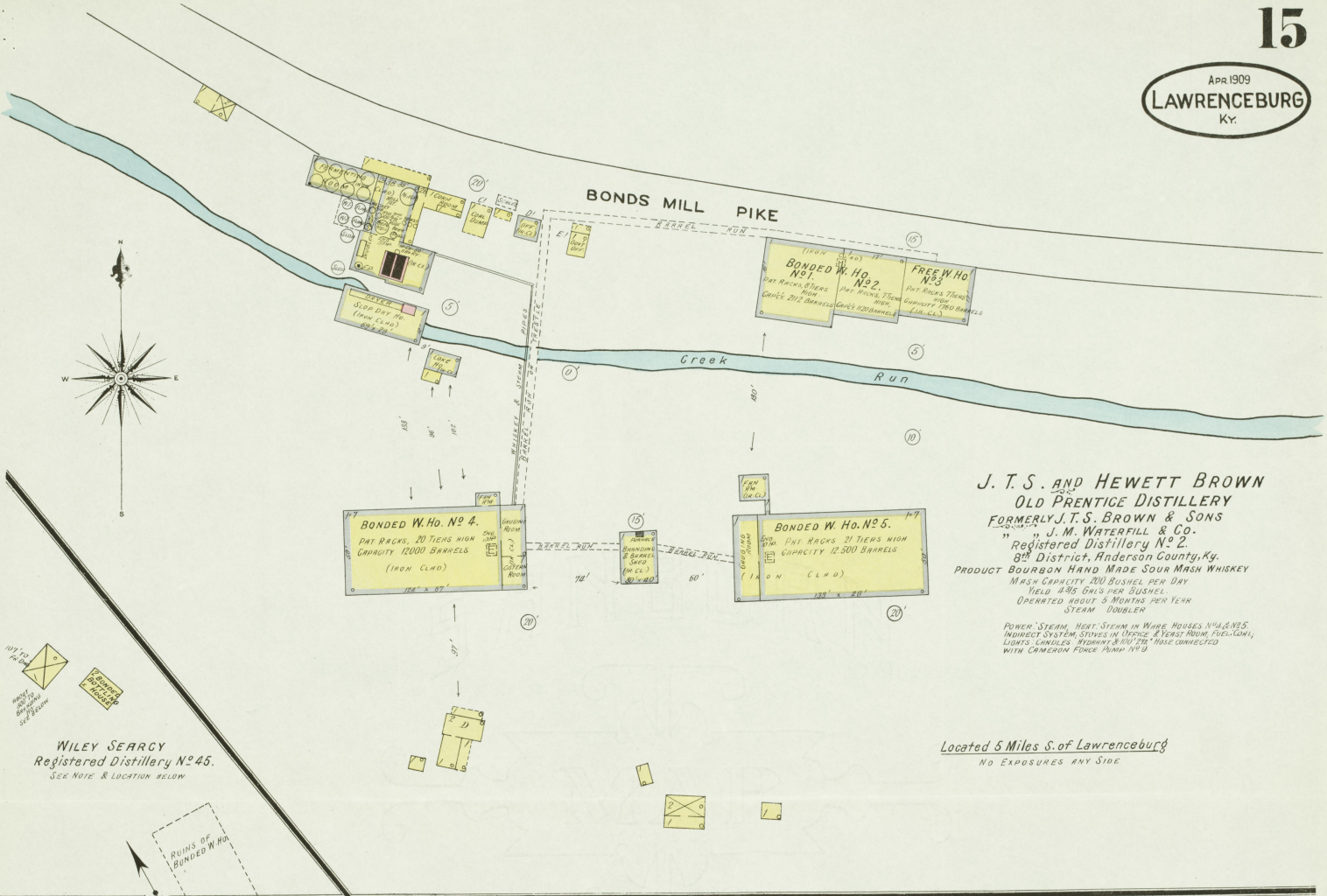
MARY M. DOWLING
 FORMERLY J. R. WALKER
 Registered Distillery No. 59.
 (Distillery formerly on this site was No. 432.)
 8th District, Anderson County, Ky.
 PRODUCT: BOURBON SOUR MASH WHISKEY
 MASH CAPACITY 100 BUSHEL PER DAY
 YIELD 475 GALS. PER BUSHEL
 OPERATED 576 MONTHS PER YEAR
 STEAM DOUBLER
 NIGHT WATCHMAN, NO CLOCK, POWER, STEAM, HEAT, STEAM IN BOTTLING HOUSE, STEAM IN OFFICE & YEAST ROOM, FUEL COAL, LIGHTS, KEROSENE LANTERNS, NO FINE APPARATUS

Located 1 Mile N. of Lawrenceburg
 NO EXPOSURE ANY SIDE



KENTUCKY DISTILLERIES & WAREHOUSE CO.
 ADDL. W. HO.'S & BOTTLING HO. OF CEDAR BROOK DISTILLERY
 Registered Distillery No. 44.
 8th District, Anderson County, Ky.
 NIGHT WATCHMAN, NO CLOCK, HEAT, STEAM IN WARE HOUSE "B" & BOTTLING HOUSE, STEAM IN OFFICE, FINE PAULS & BARRELS WELL DISTRIBUTED.

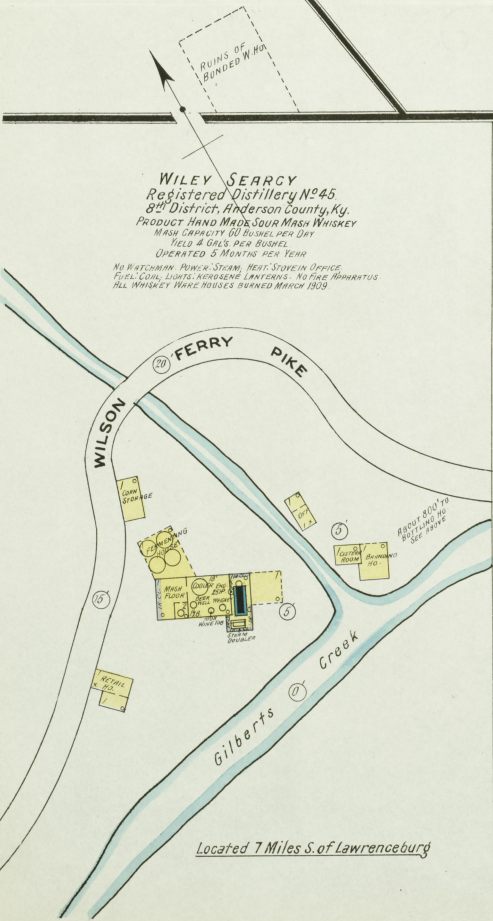
Located 1 1/2 Miles S.E. of Cedar Brook Distillery
 NO EXPOSURE ANY SIDE



J. T. S. AND HEWETT BROWN
OLD PRENTICE DISTILLERY
 FORMERLY J. T. S. BROWN & SONS
 " J. M. WATERFILL & CO.
 Registered Distillery No 2
 8th District, Anderson County, Ky.
 PRODUCT BOURBON HAND MADE SOUR MASH WHISKEY
 MASH CAPACITY 200 BUSHEL PER DAY
 YIELD 4 1/2 GALS PER BUSHEL
 OPERATED ABOUT 3 MONTHS PER YEAR
 STEAM DOUBLER
 POWER STEAM, HEAT STEAM IN WIRE HOUSES NO. 4 & NO. 5
 INDIRECT SYSTEM STOVES IN OFFICE & YEAST ROOM, FUEL COAL,
 LIGHTS CHANDELIERS, HYDRANT BRIDGES MADE CONNECTED
 WITH CAMERON FORCE PUMP NO. 9

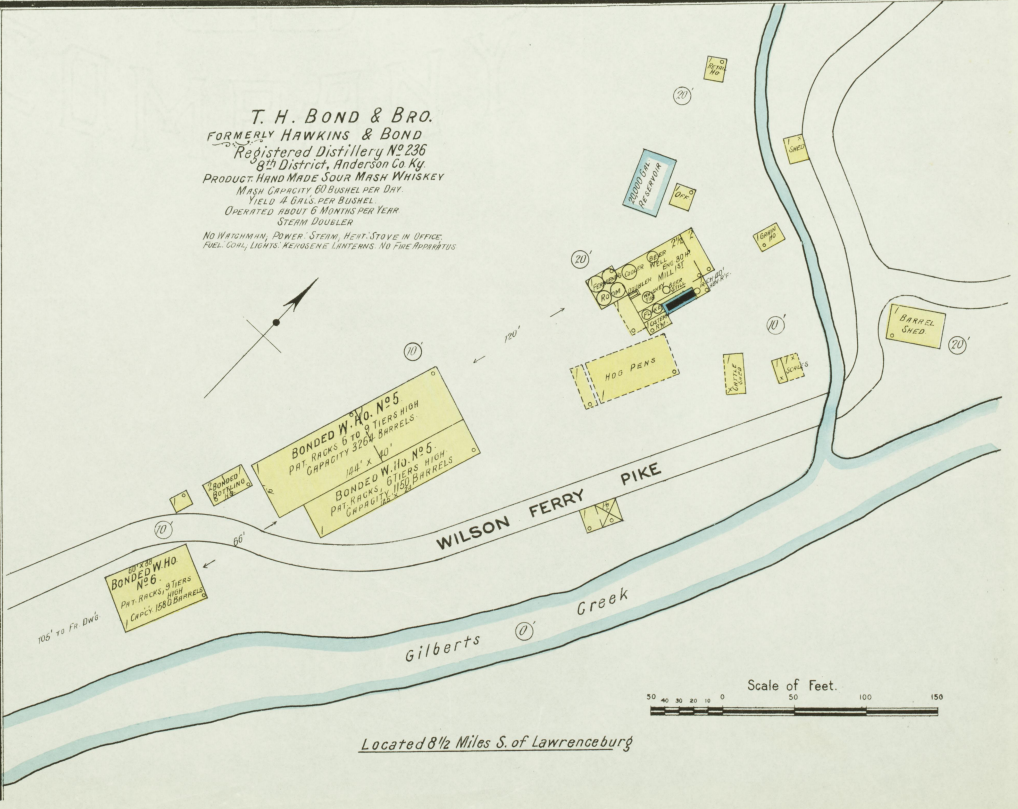
Located 5 Miles S. of Lawrenceburg
 NO EXPOSURES ANY SIDE

WILEY SEARCY
 Registered Distillery No 45.
 SEE NOTE & LOCATION BELOW



WILEY SEARCY
 Registered Distillery No 45
 8th District, Anderson County, Ky.
 PRODUCT HAND MADE SOUR MASH WHISKEY
 MASH CAPACITY 60 BUSHEL PER DAY
 YIELD 4 GALS PER BUSHEL
 OPERATED 2 MONTHS PER YEAR
 NO WATCHMAN, POWER STEAM, HEAT STEAM IN OFFICE
 FUEL COAL, LIGHTS KEROSENE LAMPERS, NO FIRE APPARATUS
 ALL WHISKEY WINE HOUSES BURNED MARCH 1909

Located 7 Miles S. of Lawrenceburg

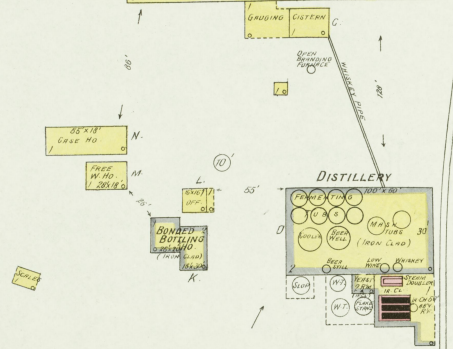
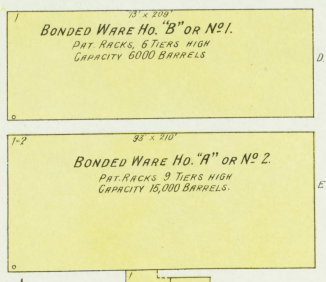


T. H. BOND & BRO.
 FORMERLY HAWKINS & BOND
 Registered Distillery No 236
 8th District, Anderson Co Ky
 PRODUCT HAND MADE SOUR MASH WHISKEY
 MASH CAPACITY 60 BUSHEL PER DAY
 YIELD 4 GALS PER BUSHEL
 OPERATED ABOUT 6 MONTHS PER YEAR
 STEAM DOUBLER
 NO WATCHMAN, POWER STEAM, HEAT STEAM IN OFFICE
 FUEL COAL, LIGHTS KEROSENE LAMPERS, NO FIRE APPARATUS

Located 8 1/2 Miles S. of Lawrenceburg

Scale of Feet.
 50 40 30 20 10 0 50 100 150

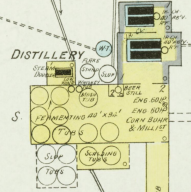
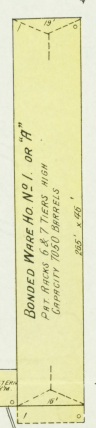
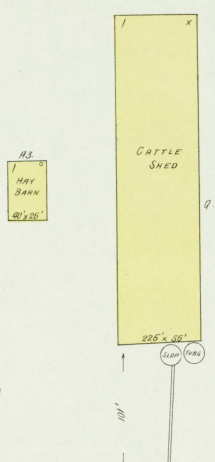
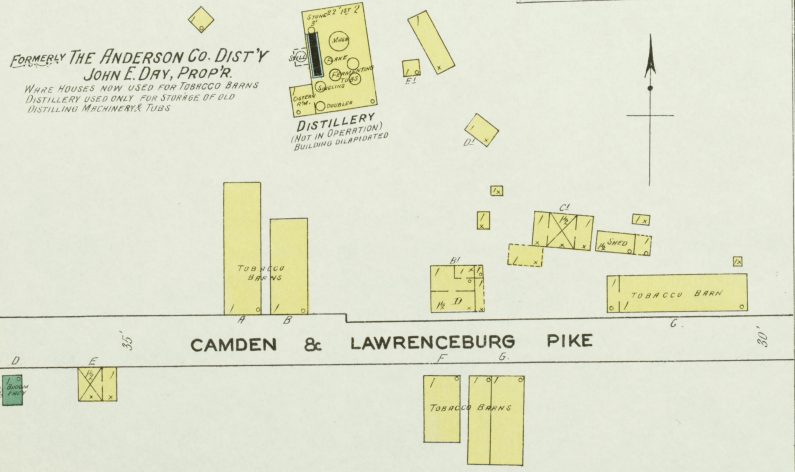
Apr. 1909
LAWRENCEBURG
 Ky.



W. B. SAFFELL
 Registered Distillery No. 123
 8th District, Anderson County, Ky.
 PRODUCT BOURBON SOUR MASH WHISKEY
 CAPACITY 500 BUSHELS PER DAY
 YIELD 4 3/4 GALS PER BUSHEL
 STEAM DOUBLER
 NIGHT WATCHMEN IN RUNNING SEASON. NO CLOCK
 POWER. STEAM HEAT. STOVES IN OFFICE, TEST &
 BOTTLING ROOMS. LIGHTS. KEROSENE LAMP TERN.
 FUEL. COAL. NO FIRE APPARATUS
 RUNS ABOUT 5 MONTHS PER YEAR

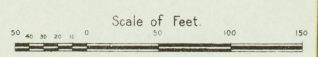
Located 2 Miles N.W. of Lawrenceburg

AT CAMDEN, KY.
 Located 10 Miles N.W. of Lawrenceburg



EDWARD MURPHY & CO.
 BELLE OF ANDERSON DISTILLERY
 Registered Distillery No. 400
 8th District, Anderson County, Ky.
 PRODUCT BOURBON SOUR MASH WHISKEY
 CAPACITY 200 BUSHELS PER DAY
 YIELD 4 3/4 GALS PER BUSHEL
 OPERATED ABOUT 3 MONTHS PER YEAR
 STEAM DOUBLER
 NIGHT WATCHMEN IN RUNNING SEASON. NO CLOCK
 POWER. STEAM HEAT. STOVES IN OFFICE. TEST ROOM,
 FUEL. COAL. LIGHTS. KEROSENE LAMP TERN.
 WATER FROM RIVER BY LEADEN PIPES. PUMP & FROM
 SPRING ON HILLSIDE ELEVATION. TO GIVE 10 LBS. PRESSURE
 PER 50 FT. AT DISTILLERY. 200 BARRELS

Located 3 Miles N.E. of Lawrenceburg
 NO EXPOSURE ANY SIDE



Kentucky River