

Ohio River

KEY

WATER FACILITIES:
 Private Wells & Cisterns

FIRE DEPT.:
 Fire Station
 Fire Engine
 Fire Truck
 Fire Hose
 Fire Ladder
 Fire Hook
 Fire Axe
 Fire Pick
 Fire Shovel
 Fire Sledge
 Fire Saw
 Fire Hatchet
 Fire Crowbar
 Fire Pulley
 Fire Rope
 Fire Chain
 Fire Hook & Ladder Truck
 Fire Truck & Ladder Truck

Buildings colored yellow are frame
 Buildings colored blue are brick
 Buildings colored red are concrete block
 Buildings colored green are masonry
 Buildings colored purple are stone
 Buildings colored brown are fire proof

Buildings colored yellow are frame
 Buildings colored blue are brick
 Buildings colored red are concrete block
 Buildings colored green are masonry
 Buildings colored purple are stone
 Buildings colored brown are fire proof

Buildings colored yellow are frame
 Buildings colored blue are brick
 Buildings colored red are concrete block
 Buildings colored green are masonry
 Buildings colored purple are stone
 Buildings colored brown are fire proof

WATER FACILITIES:
 Private Wells & Cisterns

FIRE DEPT.:
 Fire Station
 Fire Engine
 Fire Truck
 Fire Hose
 Fire Ladder
 Fire Hook
 Fire Axe
 Fire Pick
 Fire Shovel
 Fire Sledge
 Fire Saw
 Fire Hatchet
 Fire Crowbar
 Fire Pulley
 Fire Rope
 Fire Chain
 Fire Hook & Ladder Truck
 Fire Truck & Ladder Truck



441
 (A SHEETS)
 I
 OCT - 3 1916
 OF 30091

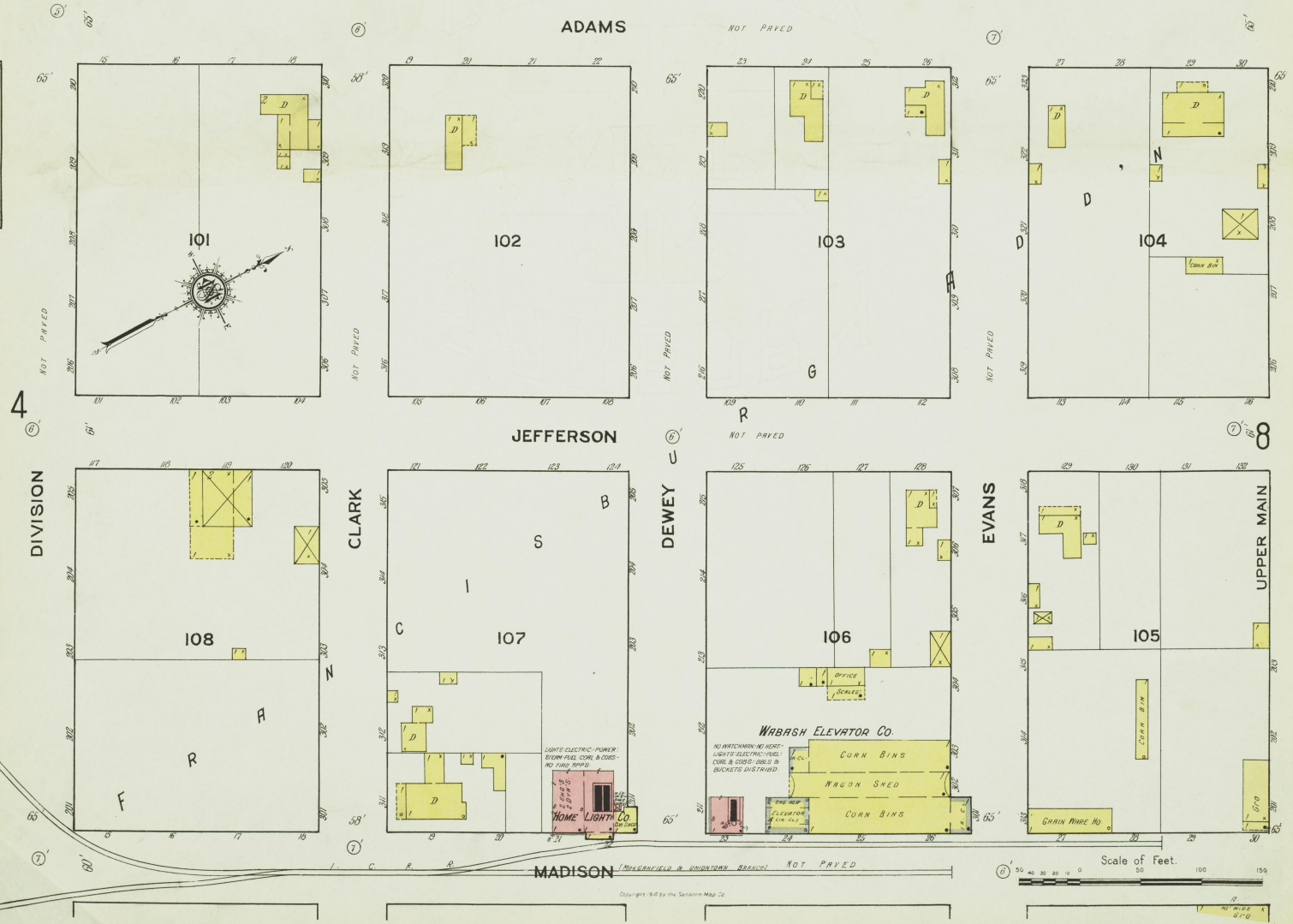


INDEX

| STREETS | NUMBER | STREETS | NUMBER | STREETS | NUMBER |
|---------------|---------|----------|---------|------------|---------|
| Adams | 1 | Main | 101-103 | Third | 100-200 |
| Clark | 1 | Mulberry | 101-104 | Fourth | 300-331 |
| Dewey | 1 | Pearl | 14-21 | Fifth | 401-430 |
| Evans | 1 | Pine | 101-114 | Sixth | 15-22 |
| Fifth | 1 | Pine | 101-114 | Upper Main | 201-210 |
| Fourth | 1 | Pine | 101-114 | Walnut | 19-30 |
| Higginson | 1 | Pine | 101-114 | Young | 2 & 5 |
| Hobson | 1 | Pine | 101-114 | | |
| Jefferson | 1 & 8 | Pine | 101-114 | | |
| McGinnis Ave. | 101-102 | Pine | 101-114 | | |

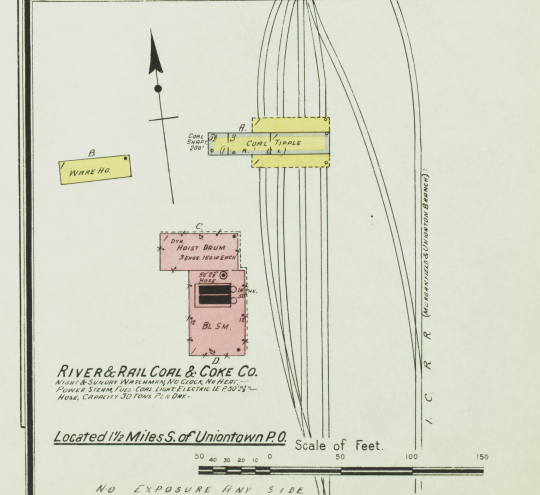
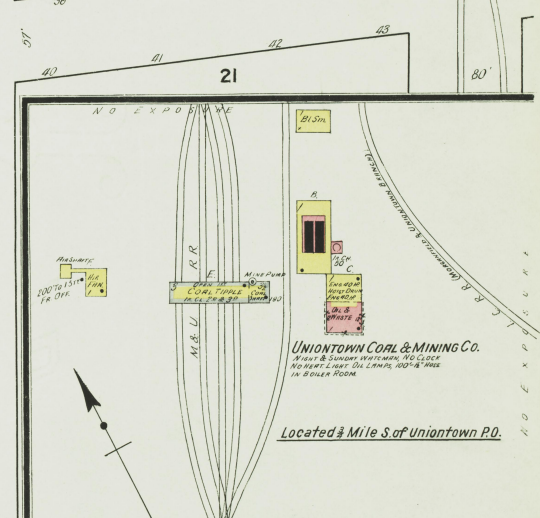
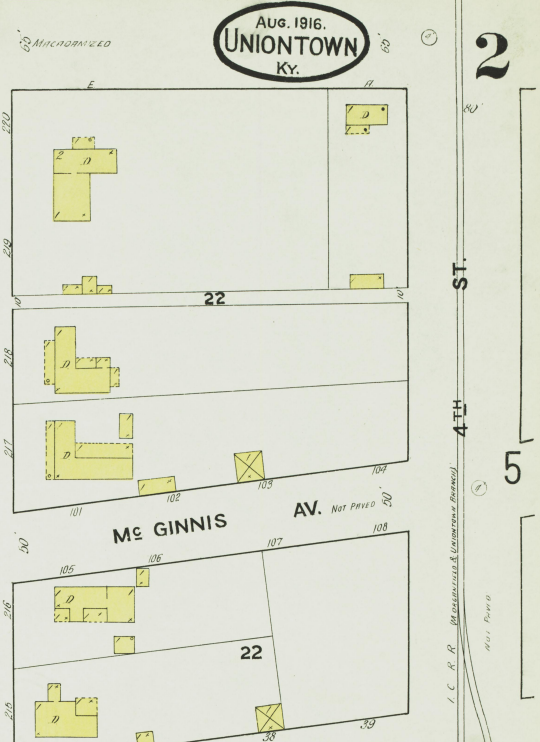
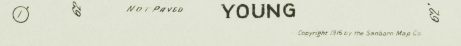
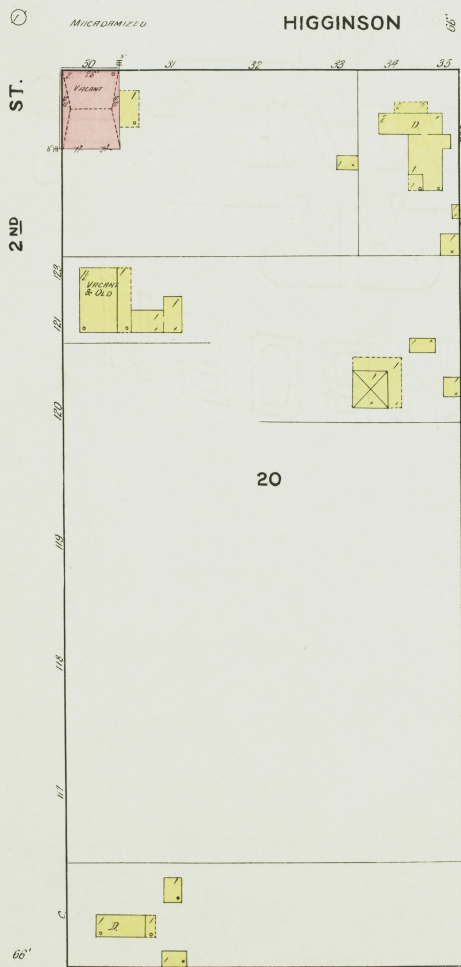
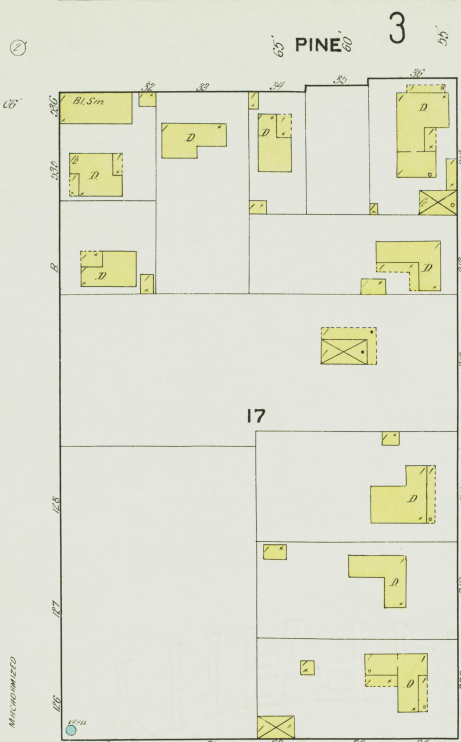
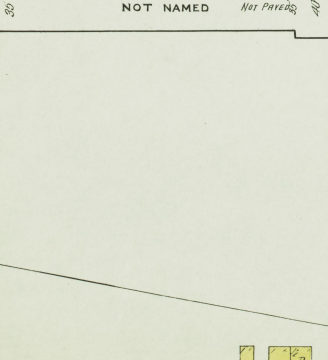
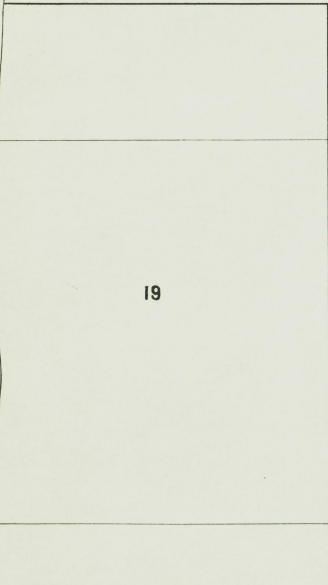
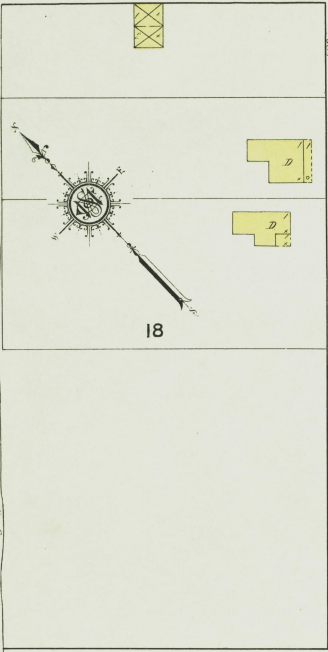
| SPECIALS | NUMBER | SPECIALS | NUMBER |
|------------------------------------|--------|-------------------------------------|--------|
| Baptist Church | 3 | Union County Fair Ass'n's Buildings | 8 |
| Barrett J. H. & Co., Tobacco W. H. | 7 | Uniontown Coal and Mining Co. | 2 |
| Christian Church | 3 | Graded School | 2 |
| | | Lumber Co. | 7 |
| | | Roller Mills Co. | 7 |
| | | Fire Department | 3 |
| | | Home Light Co. | 3 |
| | | Hot Sinks | 4 |
| | | Wabash Elevator Co. | 3 |
| | | Corn Bins, Evans & Madison Sts. | 1 |
| | | Fifth St. | 7 |
| | | Farmers' Elevator | 5 |
| | | Main Street Elevator | 5 |

NOTE.—House Numbers given are arbitrary.

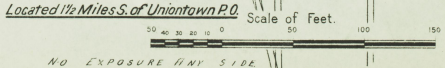


Copyright 1916 by the Sanborn Map Co.

O H I O T O P R I V E R B E Y O N D

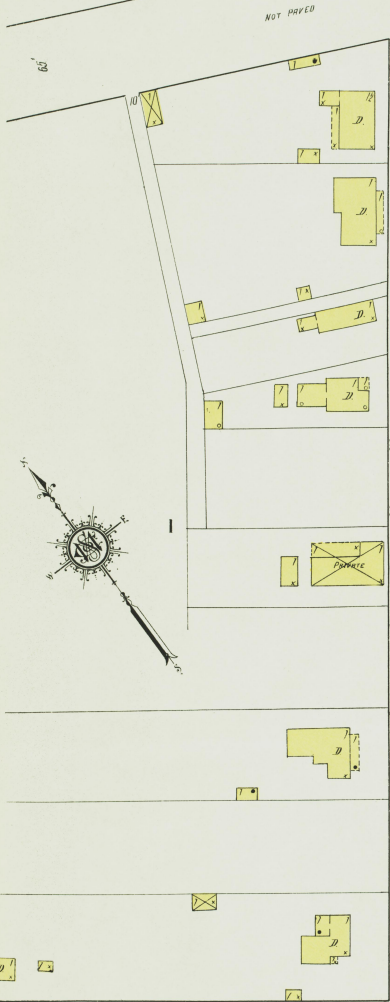


Copyright 1916 by the Sanborn Map Co.

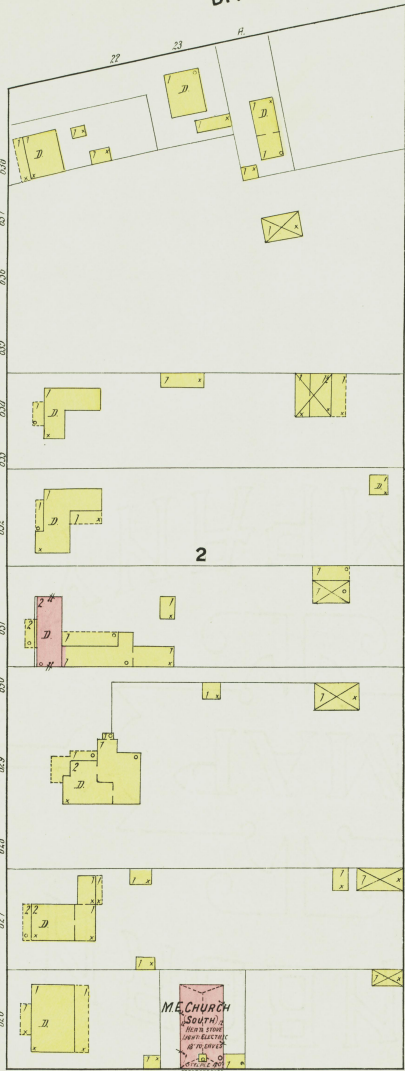


ADAMS ST. 1
DIVISION

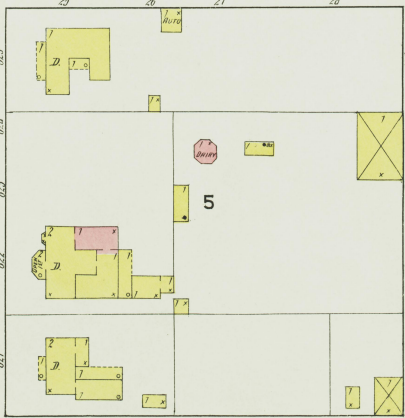
AUG. 1916.
UNIONTOWN
KY.



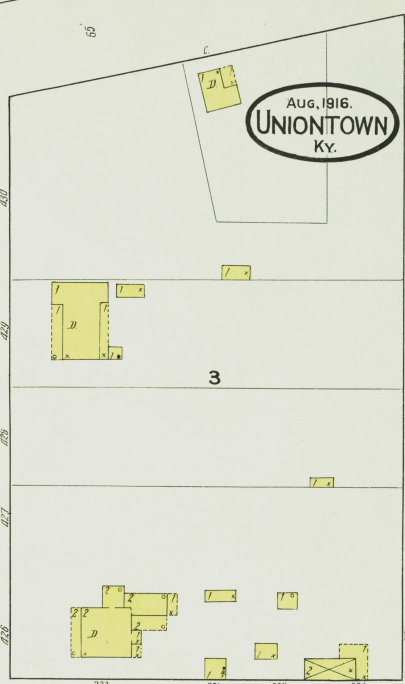
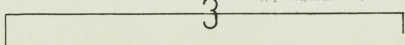
ST. 2 ND



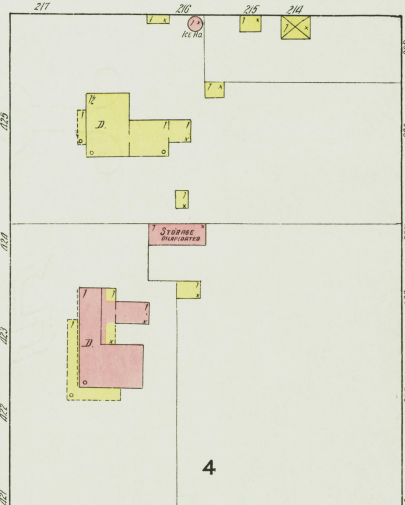
WALNUT



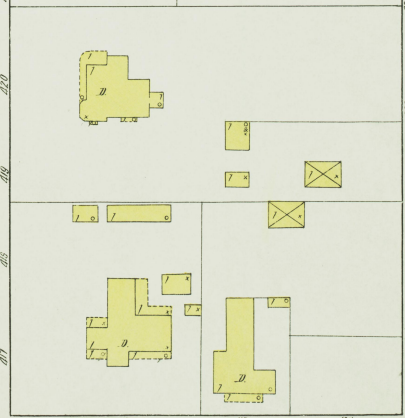
PEARL



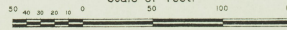
SPRUCE



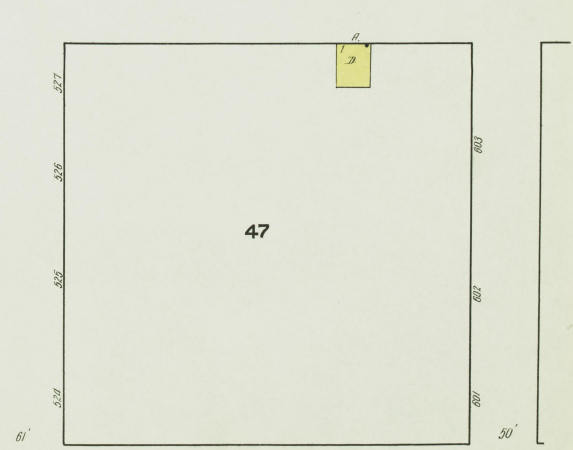
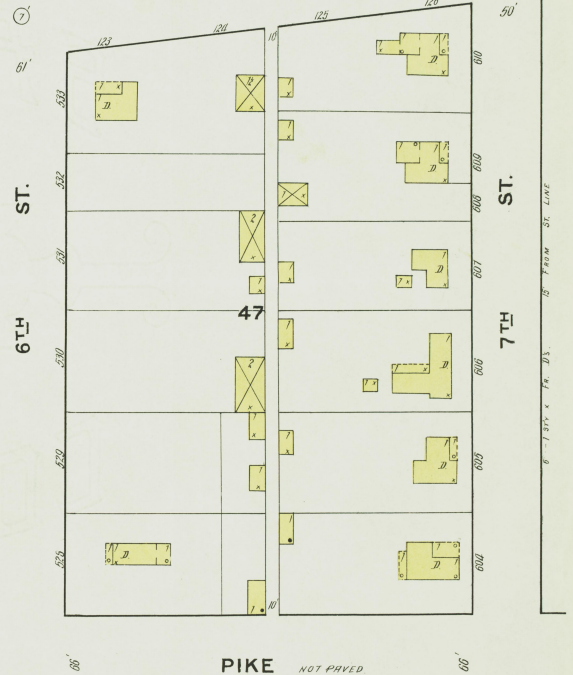
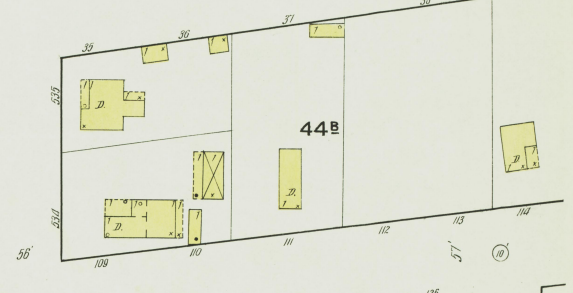
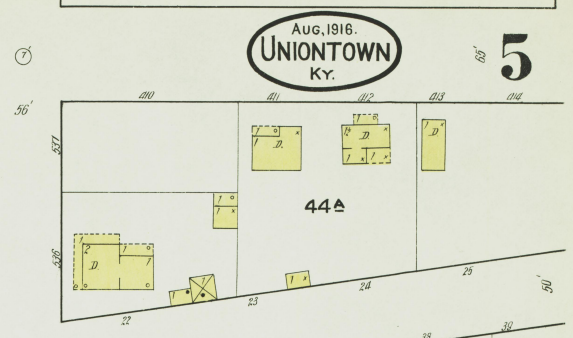
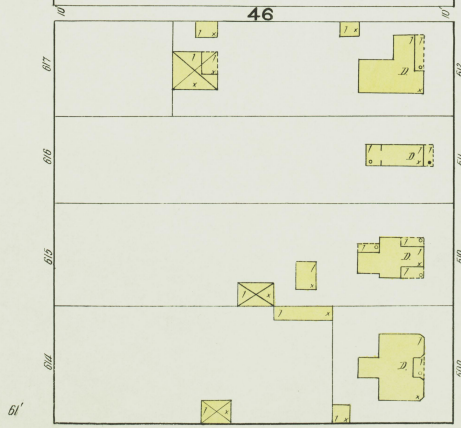
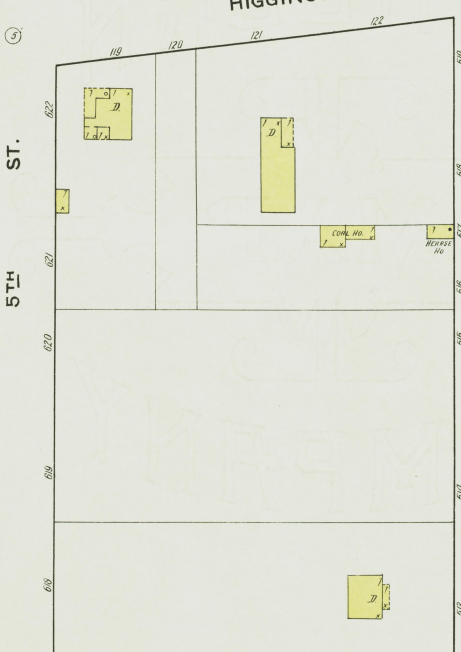
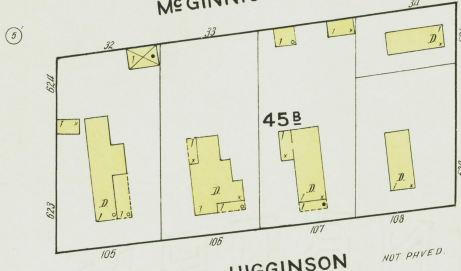
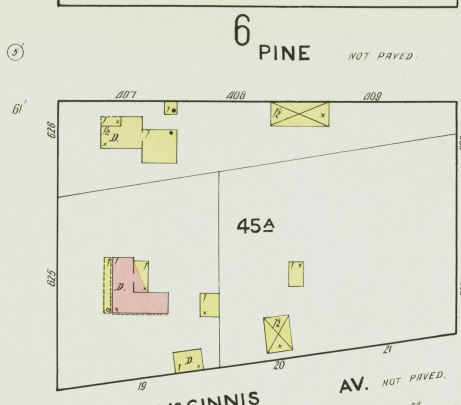
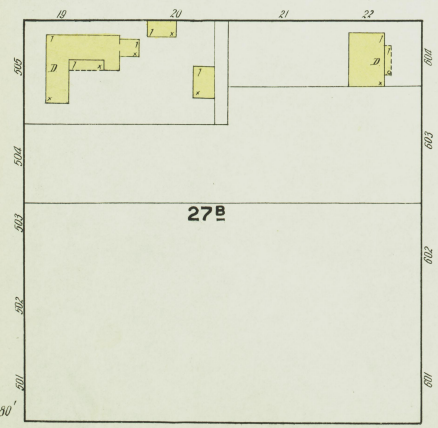
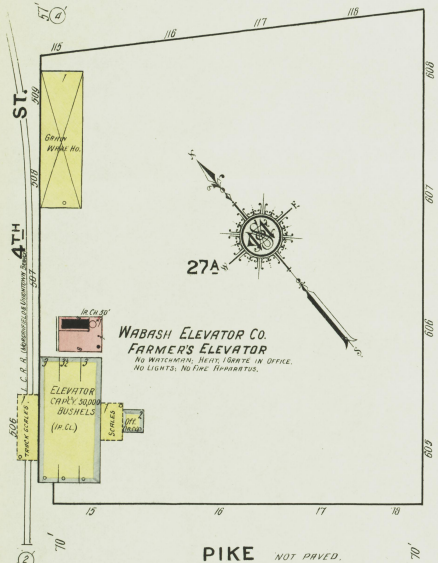
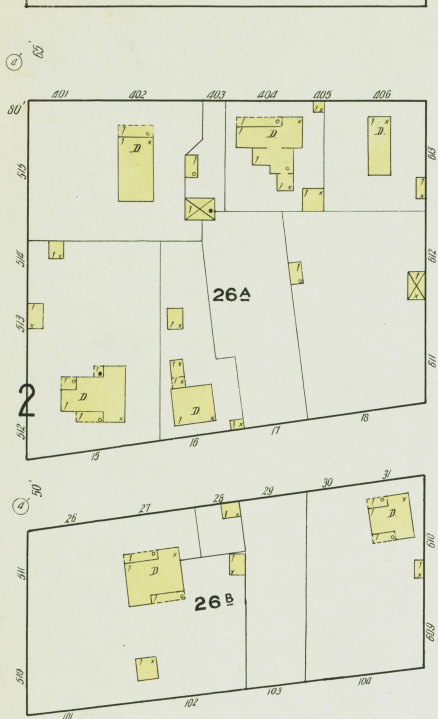
4



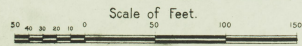
Scale of Feet.



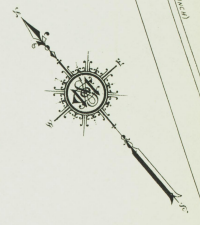
4
7
4 TH ST
WALNUT ST
NOT PAVED
I. C. R. R. (UNIONTOWN & HARRISBURG RAILROAD)
Copyright 1916 by the Sanborn Map Co.



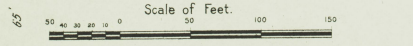
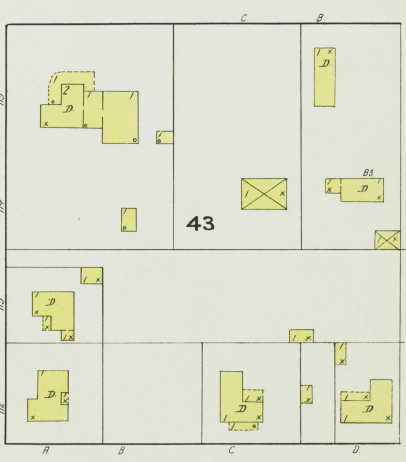
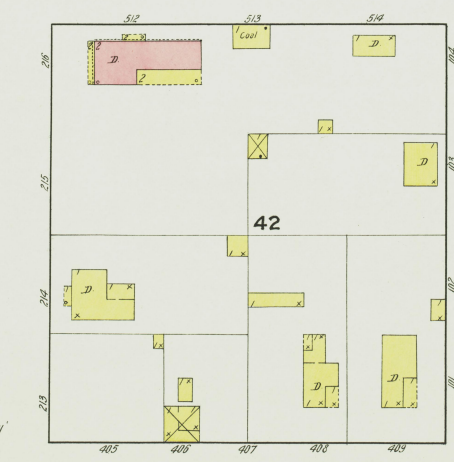
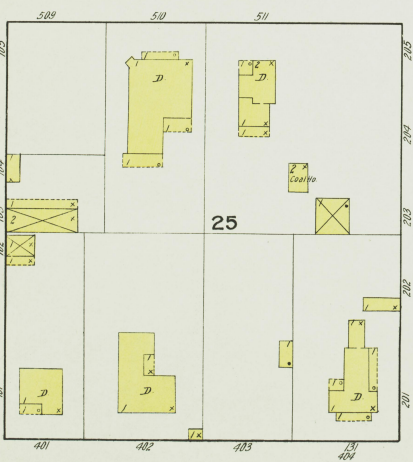
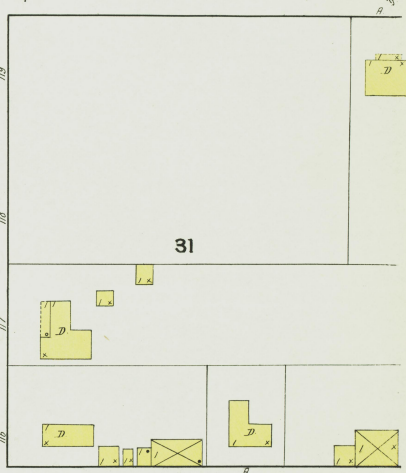
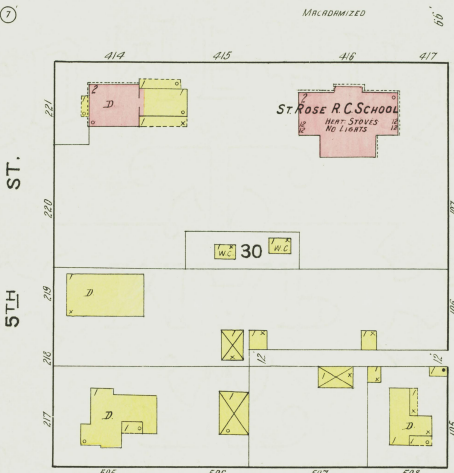
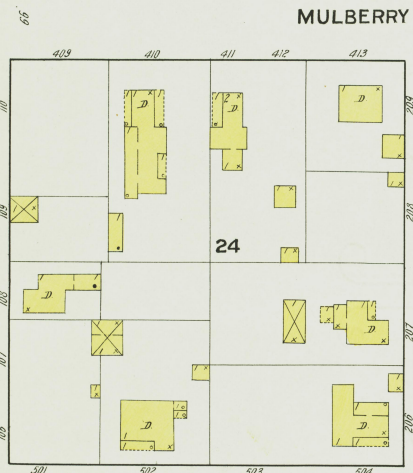
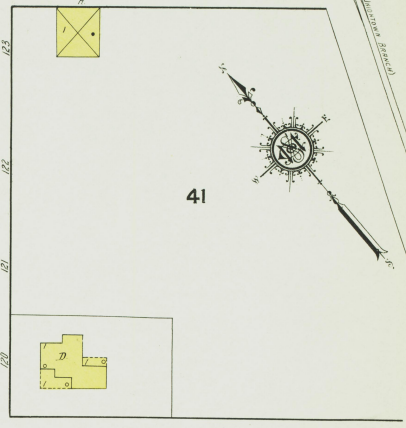
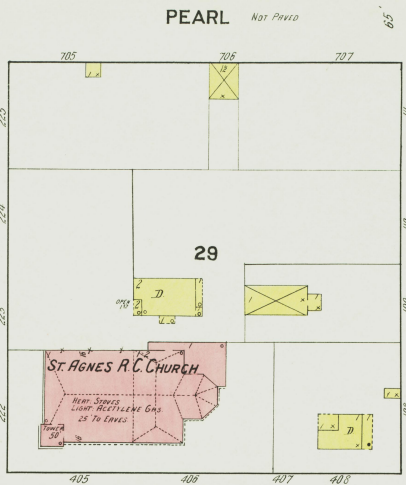
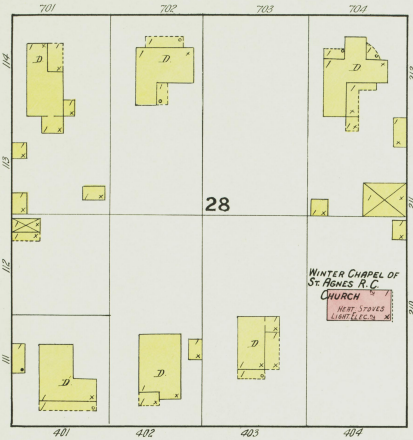
AUG. 1916.
UNIONTOWN
KY.



L. C. R. B.
(UNIONTOWN, MISSOURI, BRANCH)

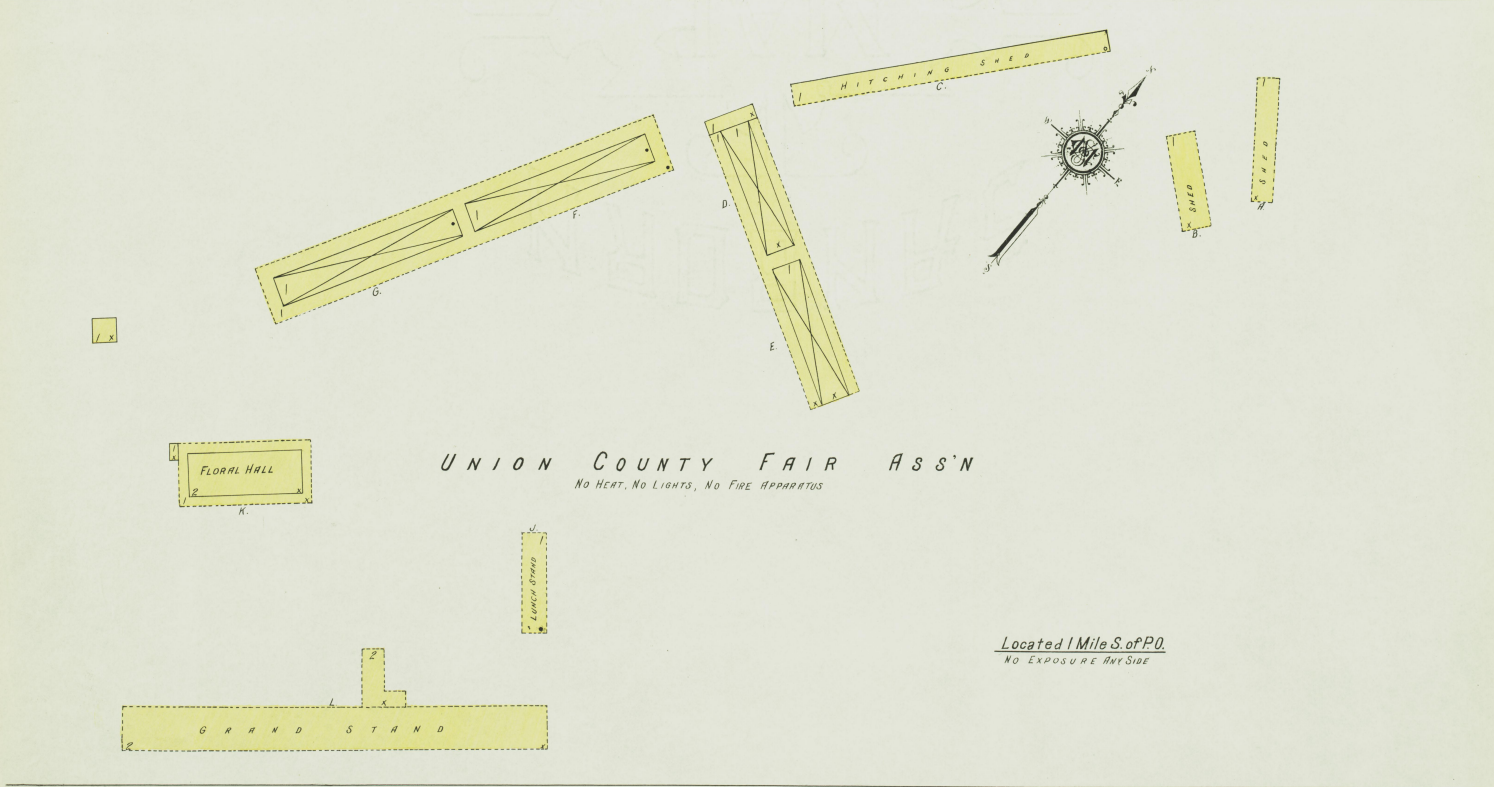
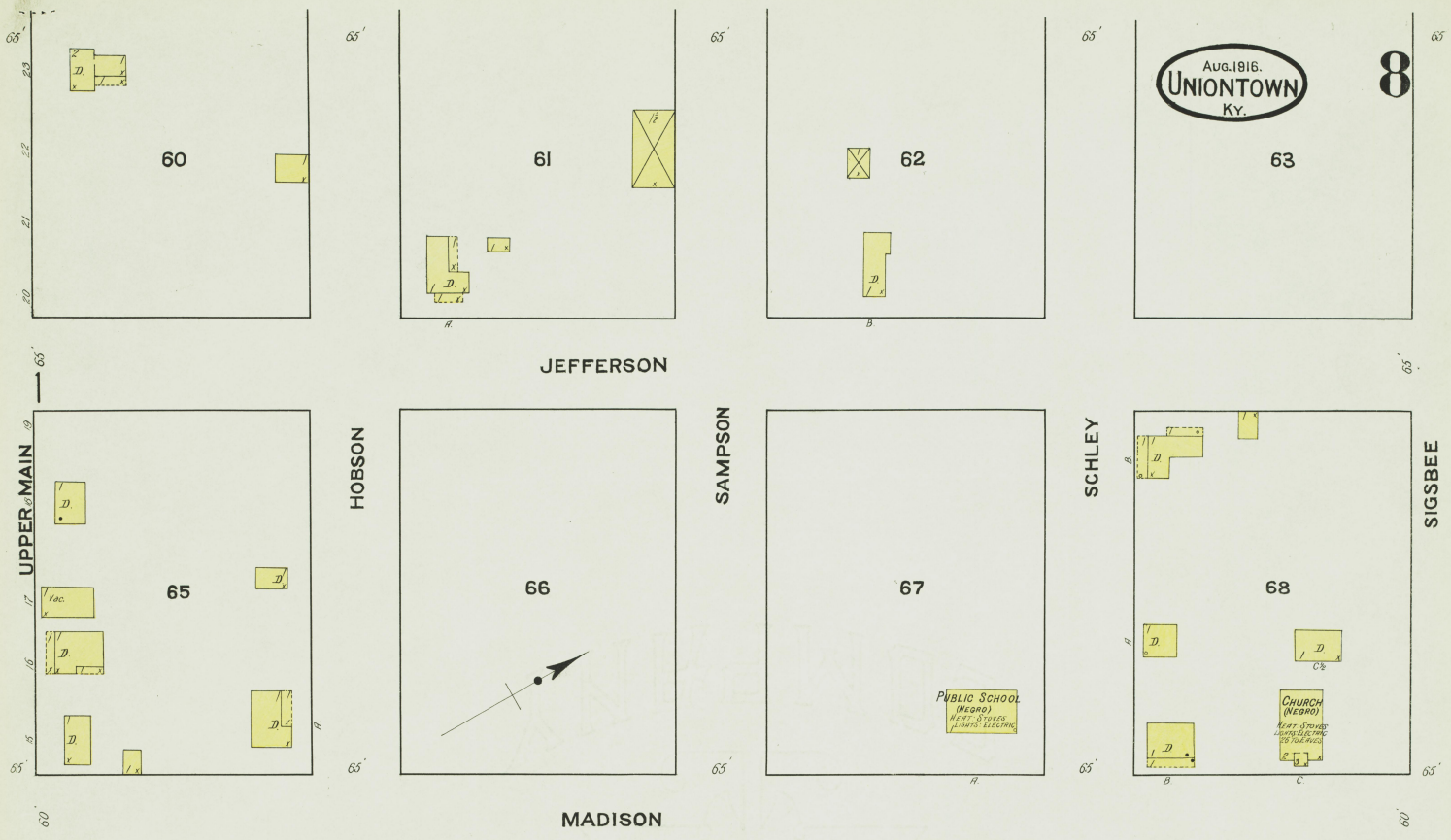


NOT PAVED
C. C. R.
ST.
4TH
3



MAIN
MACADAMIZED

PINE



Scale of Feet. 50 100 150 RACE TRACK