

INDEX.

STREETS.	INDEX.	INDEX.	INDEX.
Bosch, N. of Hasser 4	Diggs, T 3	Blades, J. E. Tobacco Warehouse, Bradford & Munro, Tob. Warehouse, Browning, O. N. & Co., Tob. Wh., Bullock, H. Tobacco Warehouse, Mullins, B. R. Tob. Warehouse, 2	Lightfoot Hotel, 1
East, N. of Hasser 4	Third, E. 1-50 4	Christian Church, 3	McDonald, R. B., Distillery, 2
Ferry, E. 1	Upper Mill, 1-67 3	Colored M. E. Church, 4	Math. Ryan, Chapel, 1
Main, 1-78 1	Water, W 37-76 3	First Baptist Church, 4	Mullins, B. R. Tob. Warehouse, 2
Mill, 1-66 1	West, 100-163 3	Prayer Book, Miss., 4	Newman, N. H. Tobacco Warehouse, 4
W. 1-150 1	W. 100-163 3	St. Paul's Luth. Prot. Church, 1	Park, J. W., Printing Office, 1
W. 1-150 1	W. 100-163 3	St. Xavier's Luth. Church, 1	Paulston Dispensary Printing, 1
W. 1-150 1	W. 100-163 3	St. Xavier's Luth. Church, 1	Public School, 4
W. 1-150 1	W. 100-163 3	St. Xavier's Luth. Church, 1	Sanctuary, 4
W. 1-150 1	W. 100-163 3	St. Xavier's Luth. Church, 1	St. Paul's Luth. Prot. Church, 1
W. 1-150 1	W. 100-163 3	St. Xavier's Luth. Church, 1	Xavier's Cath. Church, 1
W. 1-150 1	W. 100-163 3	St. Xavier's Luth. Church, 1	Sanctuary, 4
W. 1-150 1	W. 100-163 3	St. Xavier's Luth. Church, 1	Shoemaker, T. M., & Co., Saw & Planing Mill, 1
W. 1-150 1	W. 100-163 3	St. Xavier's Luth. Church, 1	Sinker, Davis & Co., Mill, 3
W. 1-150 1	W. 100-163 3	St. Xavier's Luth. Church, 1	Stevens, S. B., Wagon Shop, 3
W. 1-150 1	W. 100-163 3	St. Xavier's Luth. Church, 1	Washington Hotel, 1
W. 1-150 1	W. 100-163 3	St. Xavier's Luth. Church, 1	Woodward, J., Woollen Mill, 4
W. 1-150 1	W. 100-163 3	St. Xavier's Luth. Church, 1	
W. 1-150 1	W. 100-163 3	St. Xavier's Luth. Church, 1	
W. 1-150 1	W. 100-163 3	St. Xavier's Luth. Church, 1	

SPECIALS.

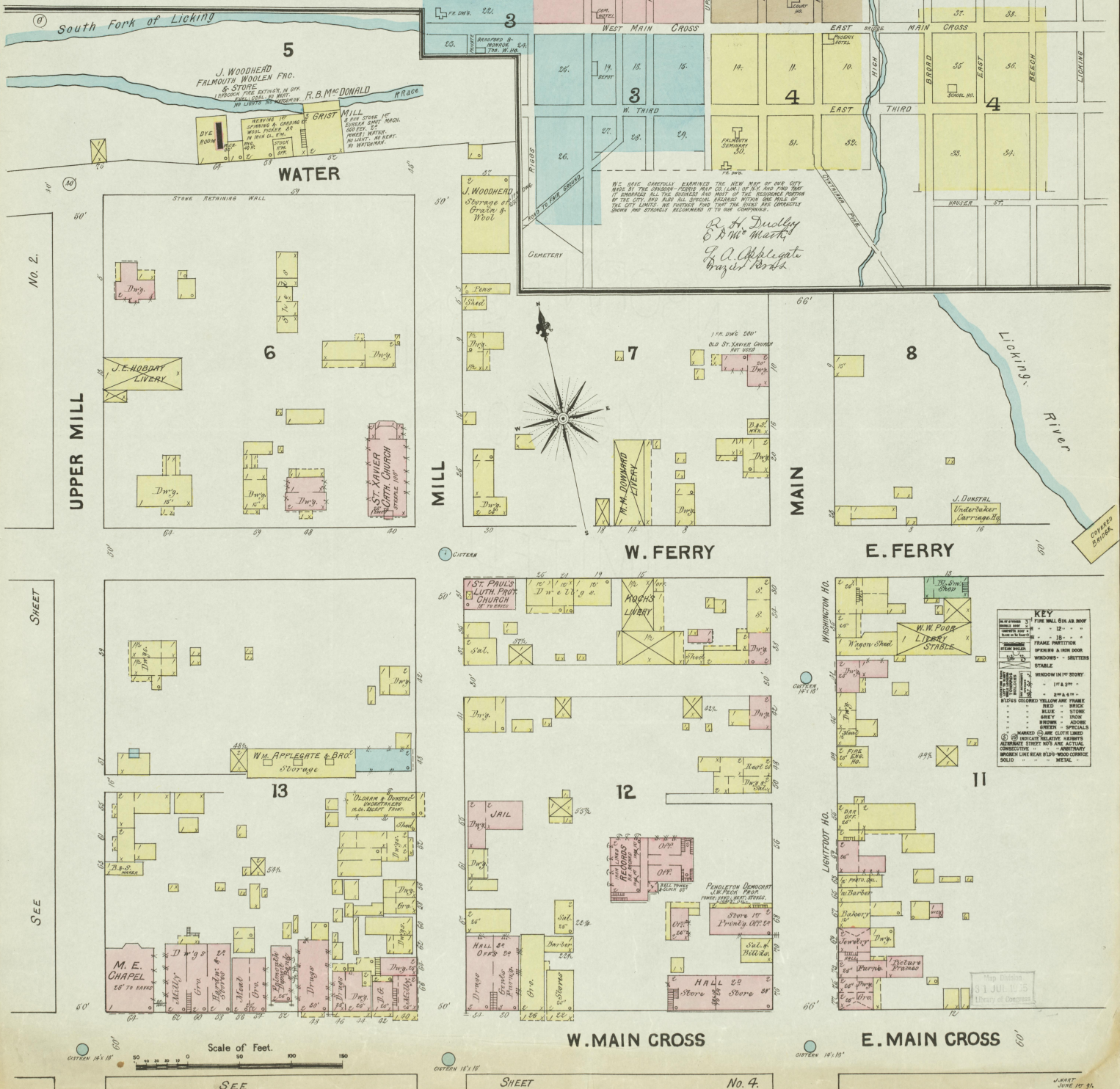
A Applegate, W. & Bro., Storage, 1
 K Henry, G. P., Printing Office, 3
 1 K. C. R. Depot, 3
 2 indicates only one side of street shown.

SANBORN-PERRIS MAP CO. LIMITED
 119 Broadway
 NEW YORK

Population 1600
 No Steam & Hand Engines
 Independent Gas Co. L. TRUCK
 Water Facilities: HOT WATER
 1000' 2 1/2" BOTTOM HOSE
 Pressing Winder 7'

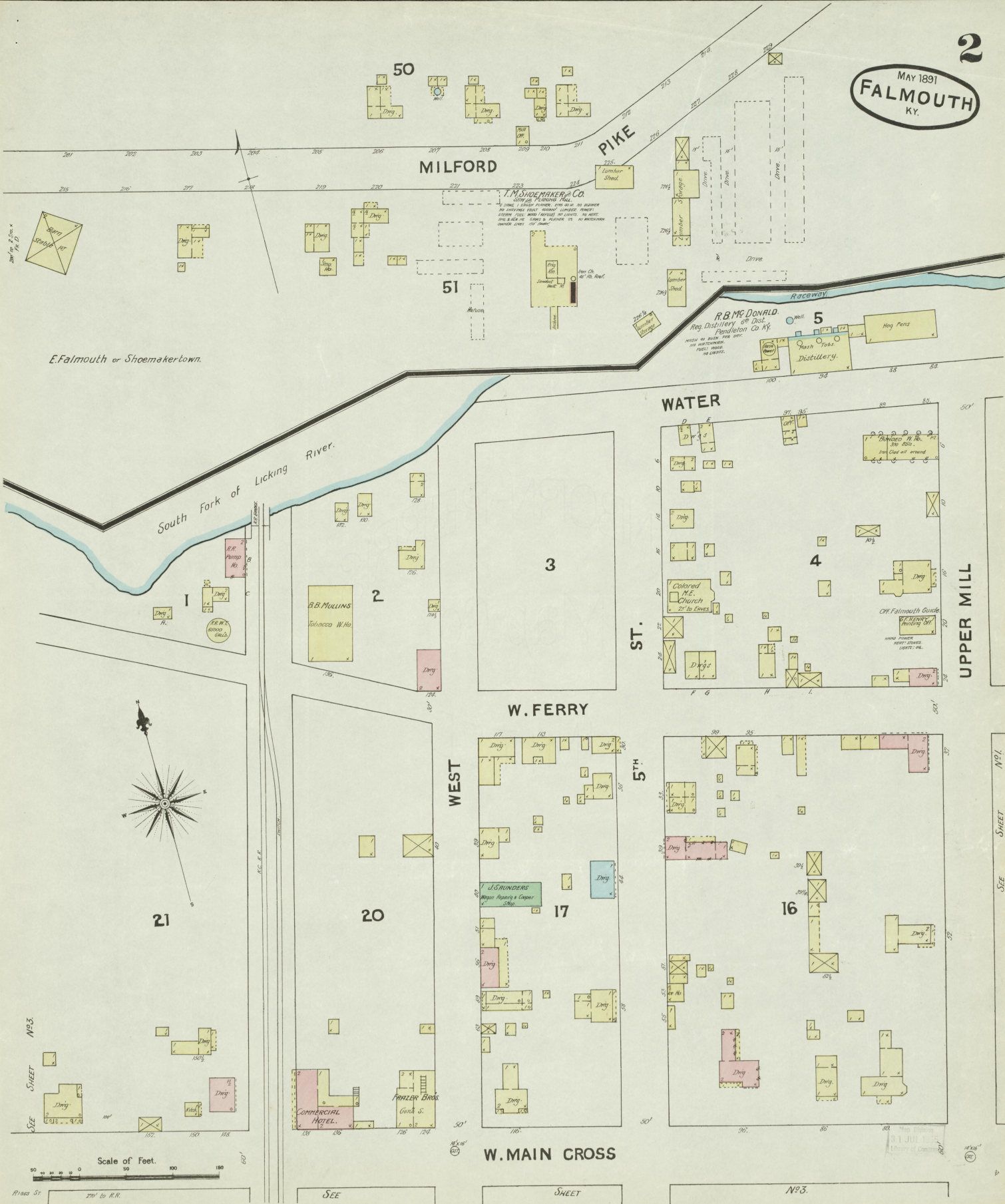
FALMOUTH
 PENDELTON CO. KEN.
 SCALE 50' X 1" = 1 MILE

2-198W

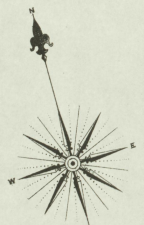


KEY

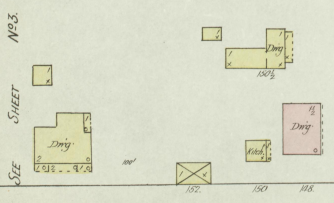
Black	Fire or Gas	Red	Brick
Blue	Water	Green	Stone
Yellow	Frame	Pink	Iron
White	Shed	Grey	Specials
Orange	Shed	Light Blue	Specials
Dark Green	Shed	Dark Green	Specials
Light Green	Shed	Light Green	Specials
Dark Blue	Shed	Dark Blue	Specials
Light Blue	Shed	Light Blue	Specials
Dark Green	Shed	Dark Green	Specials
Light Green	Shed	Light Green	Specials
Dark Blue	Shed	Dark Blue	Specials
Light Blue	Shed	Light Blue	Specials



E. Falmouth or Shoemaker town.



21



Scale of Feet.

11000 St. 270' to R.R.

SEE

SHEET

N93.

SEE SHEET N91.

SEE SHEET N92.

18

SEE

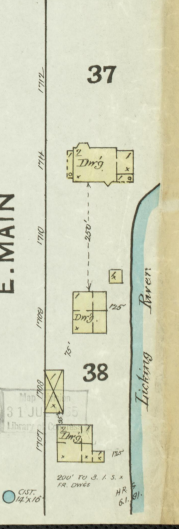
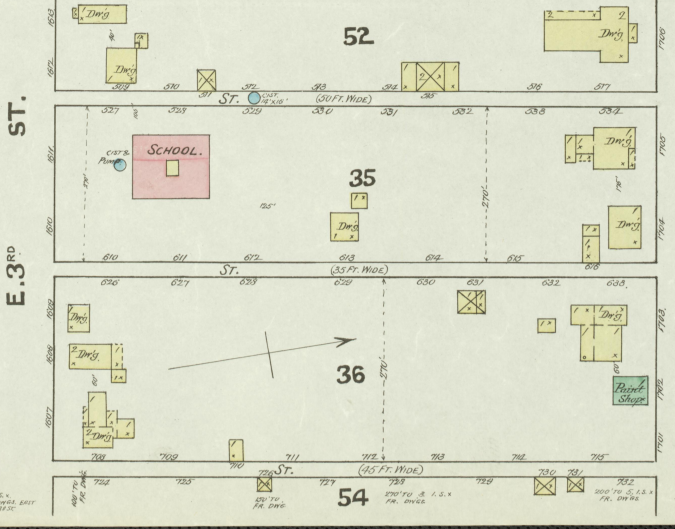
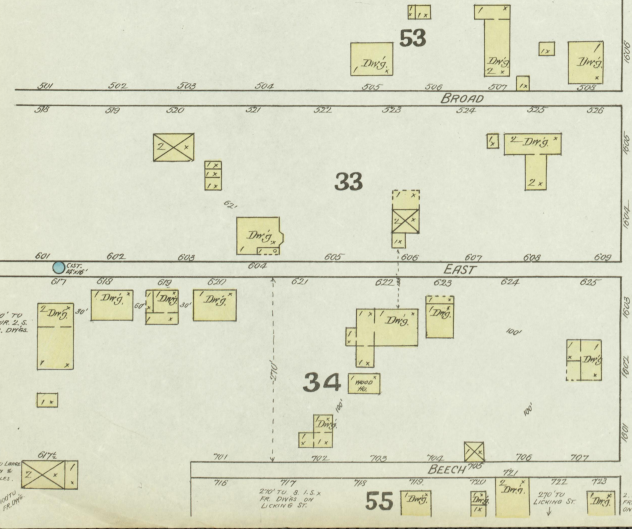
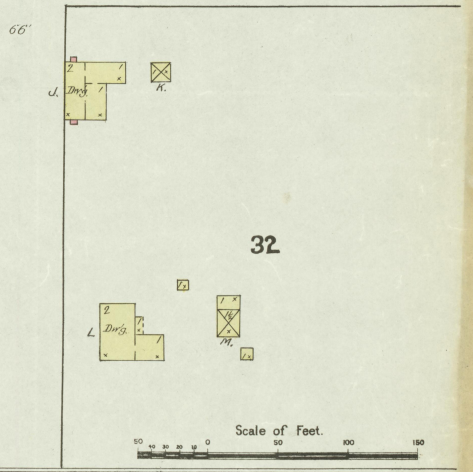
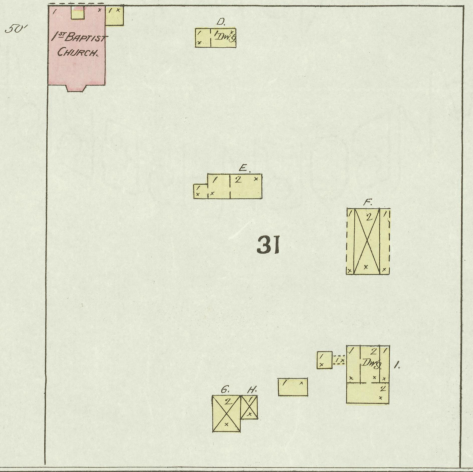
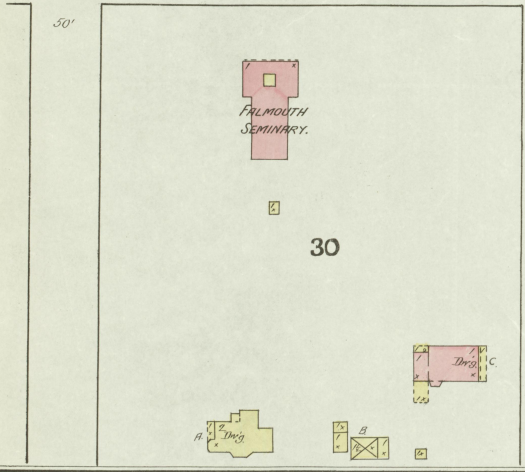
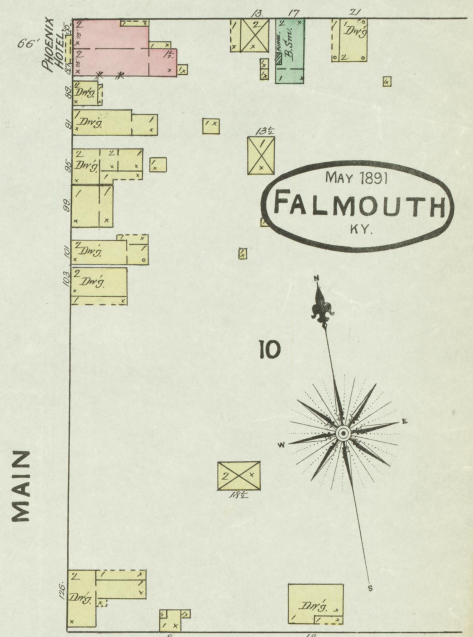
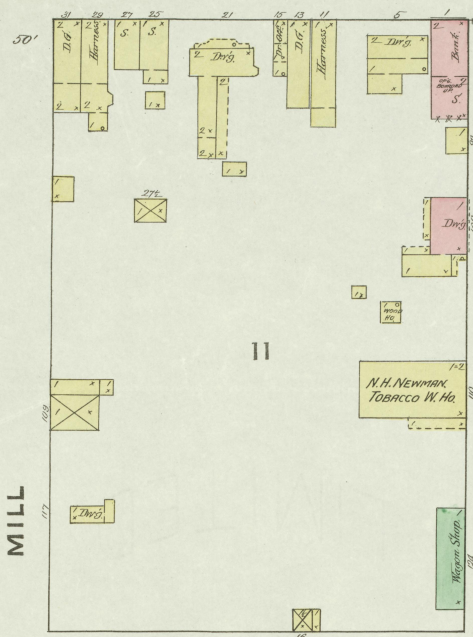
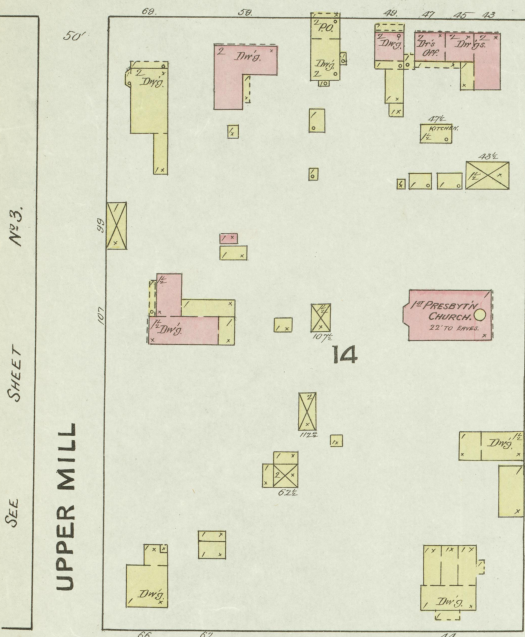
SHEET

No. 1.

4

W. MAIN CROSS

E. MAIN CROSS



SEE SHEET No. 3.

SEE SHEET No. 3.

SEE SHEET No. 3.

Lynchburg River