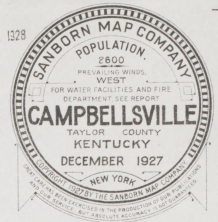
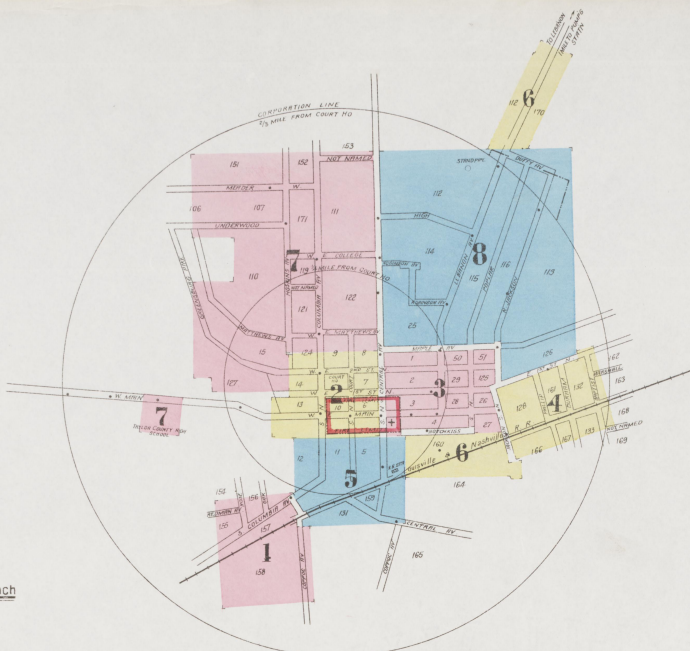


FEB 11 1928

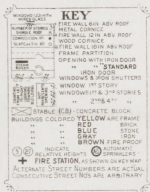


WATER FACILITIES
 Gravity & direct pressure system, privately owned. Source: *Poplar Creek* flowing into approaching *Poplar* creek 400 ft. from town. Located at *Poplar* station 1/2 mile N.E. of Court No. 10. Capacity from reservoir in pumping station 100,000 gal. per day. *Poplar* creek, 100 ft. wide, 10 ft. deep, 10 ft. high. *Poplar* creek, 100 ft. wide, 10 ft. deep, 10 ft. high. *Poplar* creek, 100 ft. wide, 10 ft. deep, 10 ft. high. *Poplar* creek, 100 ft. wide, 10 ft. deep, 10 ft. high.

FIRE DEPT.
 1. *Poplar* creek, 100 ft. wide, 10 ft. deep, 10 ft. high. *Poplar* creek, 100 ft. wide, 10 ft. deep, 10 ft. high. *Poplar* creek, 100 ft. wide, 10 ft. deep, 10 ft. high. *Poplar* creek, 100 ft. wide, 10 ft. deep, 10 ft. high. *Poplar* creek, 100 ft. wide, 10 ft. deep, 10 ft. high.

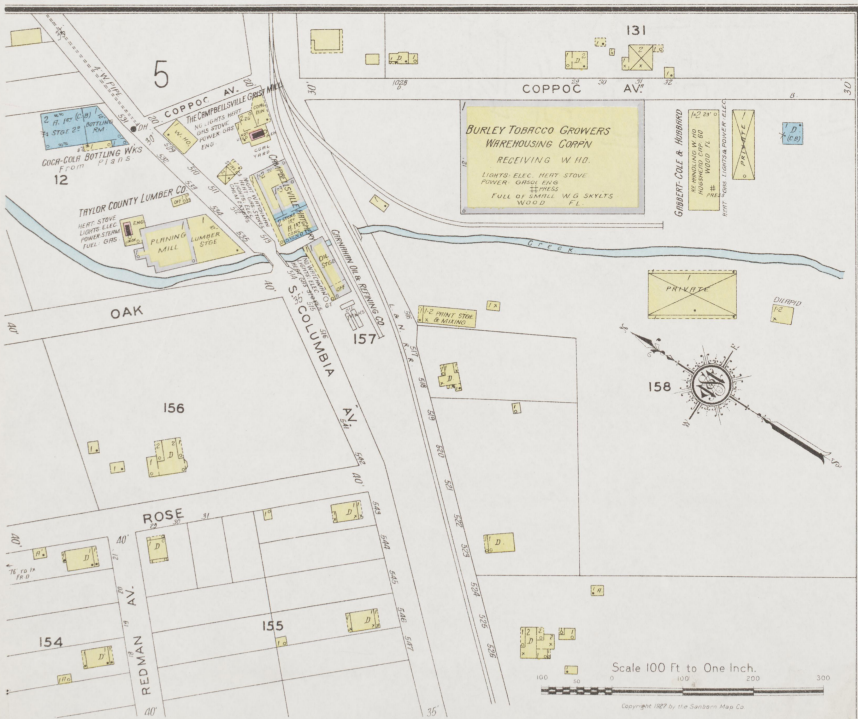


Scale 800 feet to an inch (Approx.)



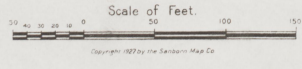
INDEX

STREETS		SPECIALS	
Acton Court (arbitrary),	4	Poplar, N.,	100-311 3
Alton Ave. (arbitrary),	300-611 4	Press Ave., see N. Court,	400-245 8
Avon Court (arbitrary),	4	Redman Ave.,	100-115 3
Baptist,	400-457 4	Robinson Ave.,	8
Barton Place (arbitrary),	4	Rose,	1
Brant Place (arbitrary),	4	Second St. North, E.,	100-229 2
Canton Place (arbitrary),	6	W.,	100-109 2
Central Ave. N.,	100-310 3	T.,	110-215 7
Central Ave. S.,	100-311 2	Underwood,	300-311 7
Central Ave. W.,	400-620 8	College, E.,	7
Central Ave. E.,	401-621 7	W.,	7
Central Ave. S.,	100-112 3	Columbia Ave. N.,	100-309 2
Central Ave. E.,	101-113 2	Columbia Ave. S.,	311-006 7
Central Ave. W.,	101-113 2	Columbia Ave. E.,	108-141 2
Central Ave. S.,	114-315 5	Columbia Ave. W.,	509-547, arbitrary 1
Coakley, see Underwood,	7	Coppoc Ave.,	100-309 2
College, E.,	7	Court, N.,	310-215 7
College, W.,	7	Court, S.,	100-115 2
Columbia Ave. N.,	100-309 2	Court, E.,	116-189 5
Columbia Ave. S.,	311-006 7	Depot, see N. Central Ave.,	
Columbia Ave. E.,	108-141 2	Darby Court (arbitrary),	7
Columbia Ave. W.,	509-547, arbitrary 1	Duffy Ave.,	310-415 4
Coppoc Ave.,	100-309 2	Durham,	310-415 4
Court, N.,	310-215 7	First St. North, E.,	100-229 2
Court, S.,	100-115 2	First St. North, W.,	300-515 3
Court, E.,	116-189 5	First St. North, S.,	516-610 4
Depot, see N. Central Ave.,		First St. North, E.,	511-620 4
Darby Court (arbitrary),	7	First St. North, W.,	517-609 8
Duffy Ave.,	310-415 4	Greensburg Pike,	2 & 7
Durham,	310-415 4	High,	300-335 8
First St. North, E.,	100-229 2	Hodges, see Durham,	
First St. North, W.,	300-515 3	Hoakins Ave.,	310-621 7
First St. North, S.,	516-610 4	Hotchkiss,	100-115 2
First St. North, E.,	511-620 4	Jackson, see Duffy Ave.,	
First St. North, W.,	517-609 8	N.,	100-110 4
Greensburg Pike,	2 & 7	S.,	101-309 3
High,	300-335 8	W.,	290-310 8
Hodges, see Durham,		E.,	400-545 8
Hoakins Ave.,	310-621 7	S.,	100-112 4
Hotchkiss,	100-115 2	E.,	101-111 3
Jackson, see Duffy Ave.,		W.,	101-111 3
N.,	100-110 4	Lebanon Ave.,	100-311 3
S.,	101-309 3	Lebanon Ave.,	400-639 8
W.,	290-310 8	Main, E.,	100-229 2
E.,	400-545 8	W.,	300-511 3
S.,	100-112 4	W.,	100-119 2
E.,	101-111 3	W.,	400-639 8
W.,	101-111 3	Maple Ave.,	300-514 3
Lebanon Ave.,	100-311 3	Maple Ave.,	301-515 8
Lebanon Ave.,	400-639 8	Marshall,	400-639 8
Main, E.,	100-229 2	Mathews Ave. E.,	100-325 7
W.,	300-511 3	Meador,	100-309 7
W.,	100-119 2	Nassau Place (arbitrary),	5
W.,	400-639 8	Oak,	1
Maple Ave.,	300-514 3	Phillips,	1
Maple Ave.,	301-515 8	Walling, U. P., Lumber Yard,	4
Marshall,	400-639 8		
Mathews Ave. E.,	100-325 7		
Meador,	100-309 7		
Nassau Place (arbitrary),	5		
Oak,	1		
Phillips,	1		



Scale 100 Ft. to One Inch.

Copyright, 1927, by the Sanborn Map Co.



Copyright 1927 by the Sanborn Map Co

3

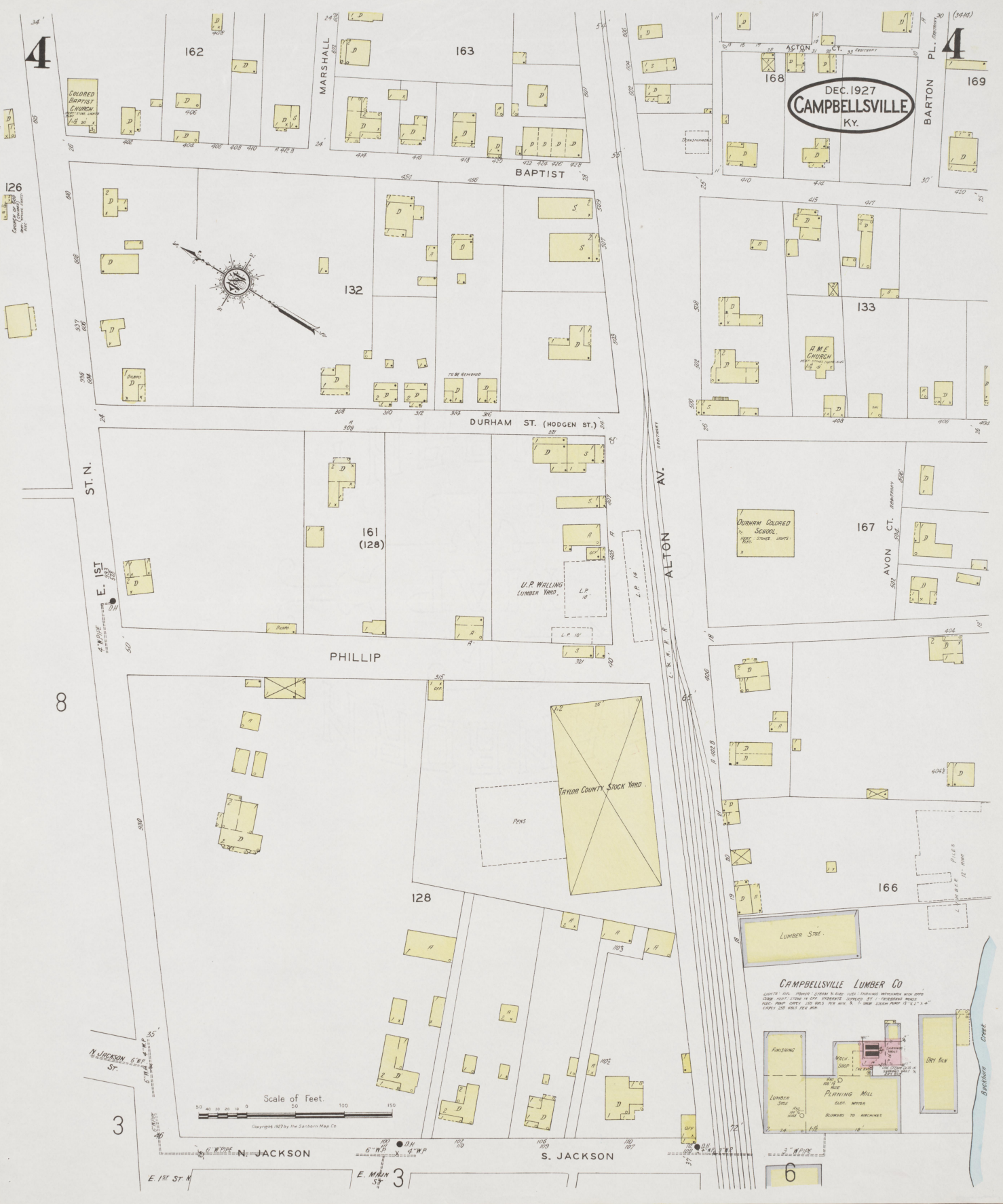
3

DEC. 1927
CAMPBELLVILLE
KY.



2

5



DEC. 1927
CAMPBELLVILLE
KY.

Scale of Feet.
0 50 100 150
Copyright 1927 by the Sanborn Map Co.

CAMPBELLVILLE LUMBER CO.
LUMBER SHED
FINISHING
PLANING MILL
ELEC. MOTOR
BURNERS TO MACHINES
DRY BOX
BARTON STREET

126
Colored Baptist Church



MARSHALL

BAPTIST

4

ST. N.

E. 1ST

PHILLIP

ALTON AV.

AVON CT.

8

S. JACKSON

3

E. 1ST ST. N.

E. MAIN

6

4

BARTON PL.

169

133

167

166

132

163

162

161 (128)

128

LUMBER SHED

TAYLOR COUNTY STOCK YARD
PENS

V.P. WALLING LUMBER YARD

R.M.E. CHURCH

DURHAM COLORED SCHOOL

COLORED BAPTIST CHURCH

N. JACKSON

E. 1ST ST. N.

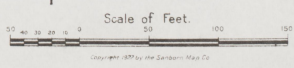
E. MAIN

BARTON STREET

5

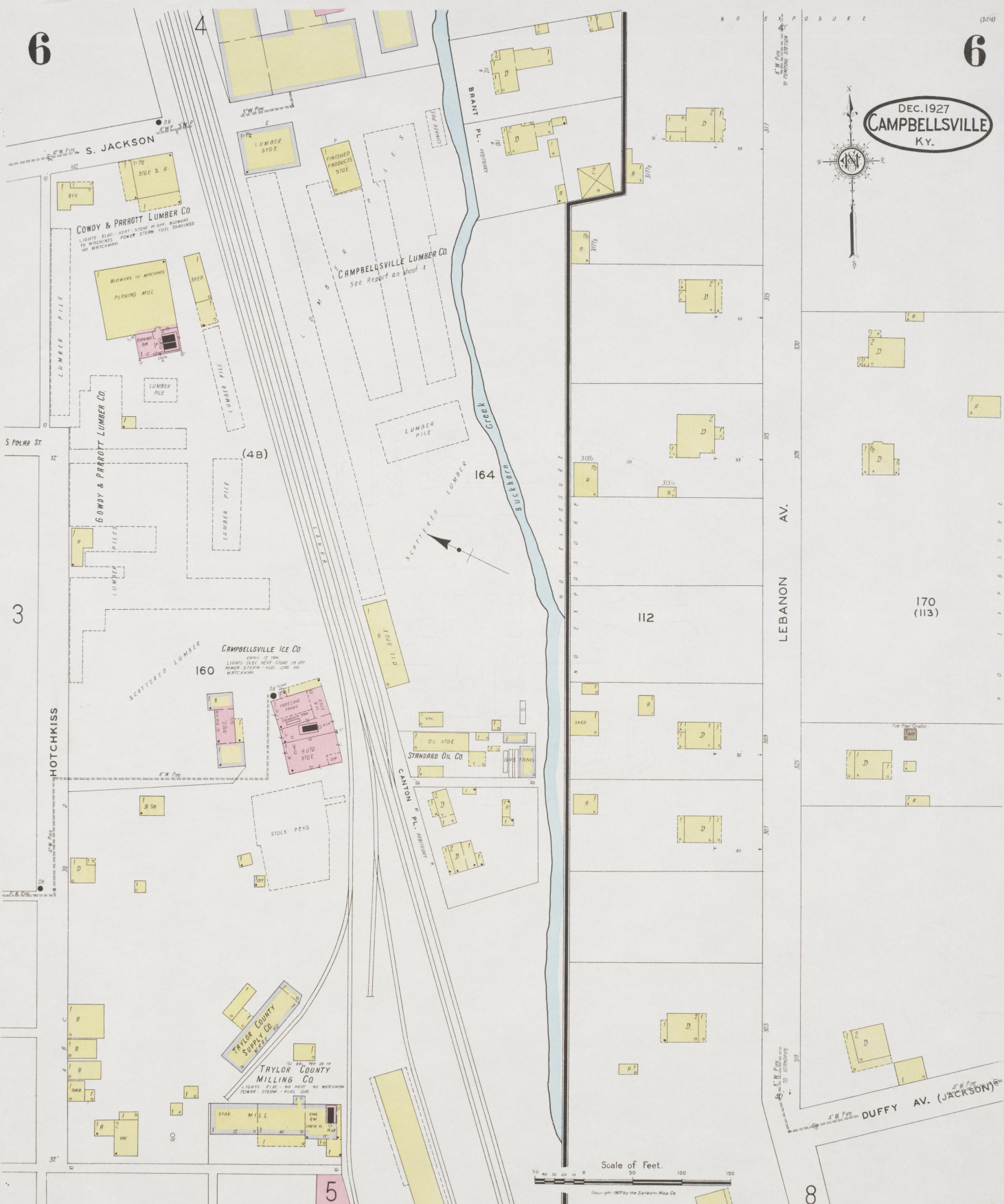
5

DEC. 1927
CAMPBELLVILLE
KY.



Copyright 1927 by the Standard Map Co.

DEC. 1927
CAMPBELLVILLE
KY.



Scale of Feet.
0 50 100 150
Copyright 1927 by the Sanborn Map Co.

DEC. 1927
CAMPBELLSVILLE
KY.



Scale 100 ft. to One Inch.
Copyright 1927 by the Sanborn Map Co.



Scale 100 Ft. to One Inch
Copyright 1927 by the Sanborn Map Co.