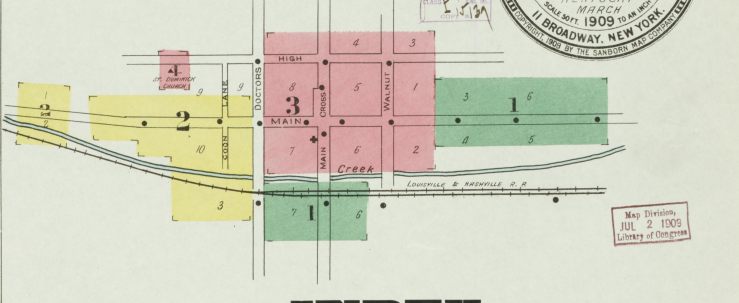


**WATER FACILITIES:**  
 Direct pressure system of water works. Water pumped from 75 million gallon reservoir into mains by 2 Riley pumps capacity 120,000 gallons per 24 hours each. Overhead pressure tanks. Fire pressure 100 lbs. 35 miles 4 to 8 mains. 2 double hydrants. System installed in 1880.  
**FIRE DEPT.:**  
 One chief, six paid men & 35 volunteers. Two hand hose reels. One combination hook & ladder truck & reel. 2000 ft. hose. Station by village.  
 Streets macadamized, elevations uneven. Lights electric.

POPULATION 1900  
 PREVIOUS MAPS BY E.S.W.  
 WATER FACILITIES SEE RATE & BY-LAW & FIRE DEPT. TOWNSHIP TWO INDEPENDENT ROAD LOTS ONE BOOK & UNDER TOWN

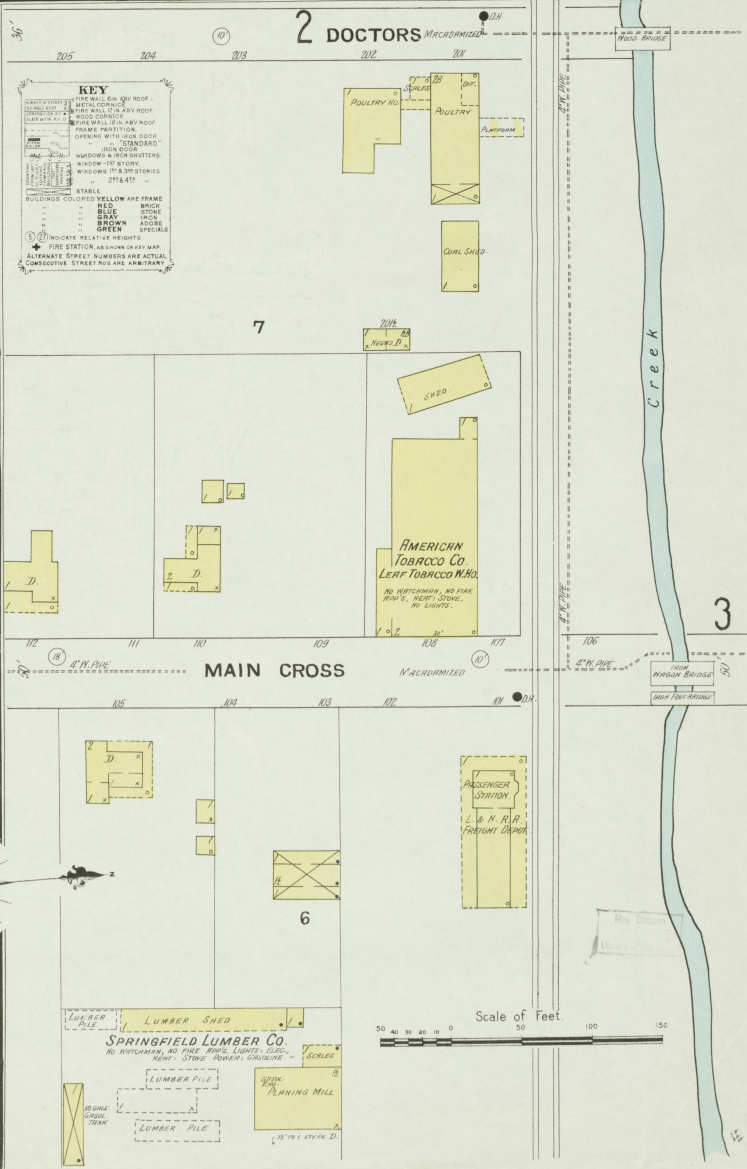
**SAIBORN MAP COMPANY**  
**SPRINGFIELD**  
 WASHINGTON COUNTY VERMONT  
 SCALE: 1:10,000  
 BROADWAY, NEW YORK

Map Division  
 JUL 2 1902  
 Library of Congress

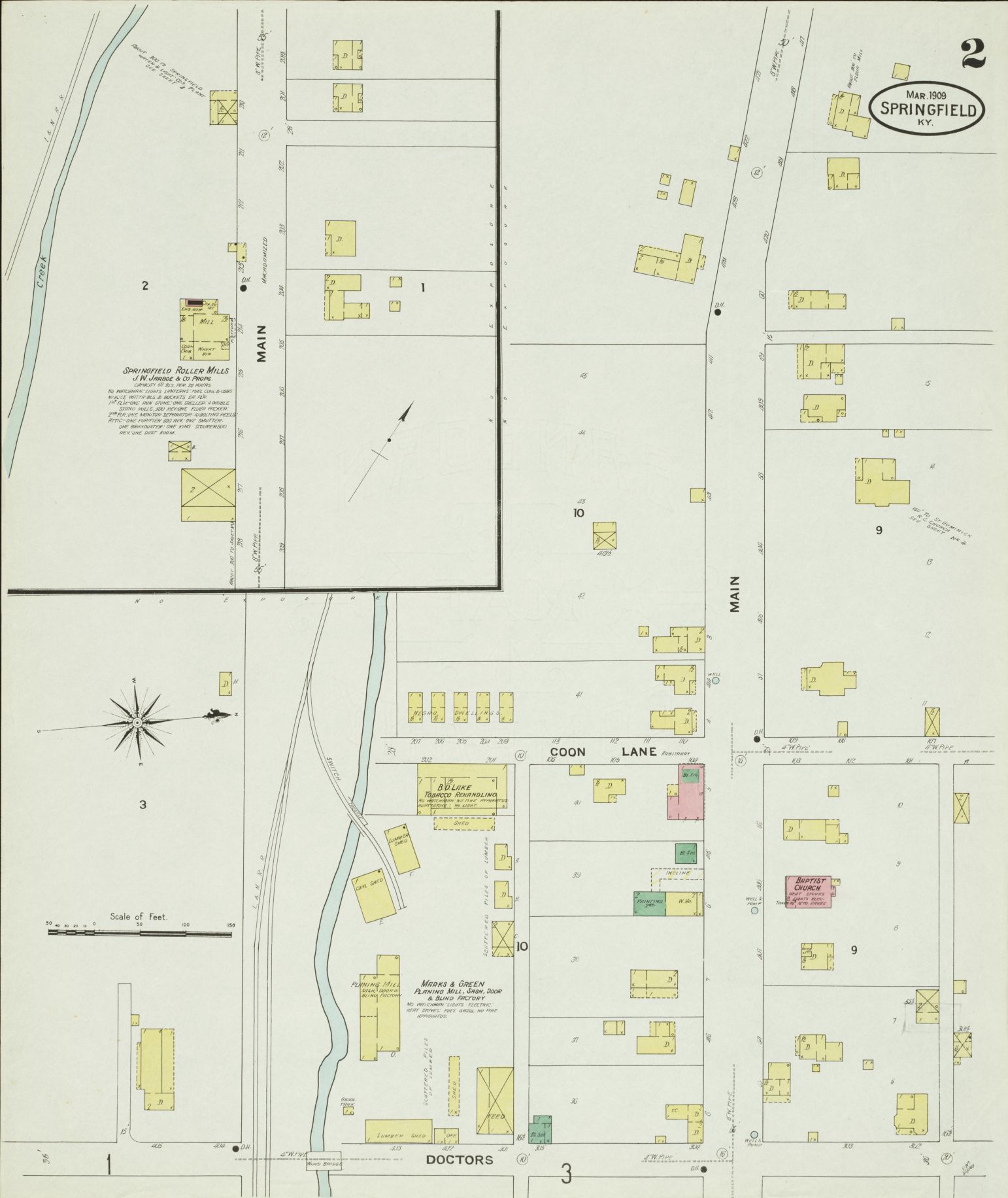


**INDEX.**

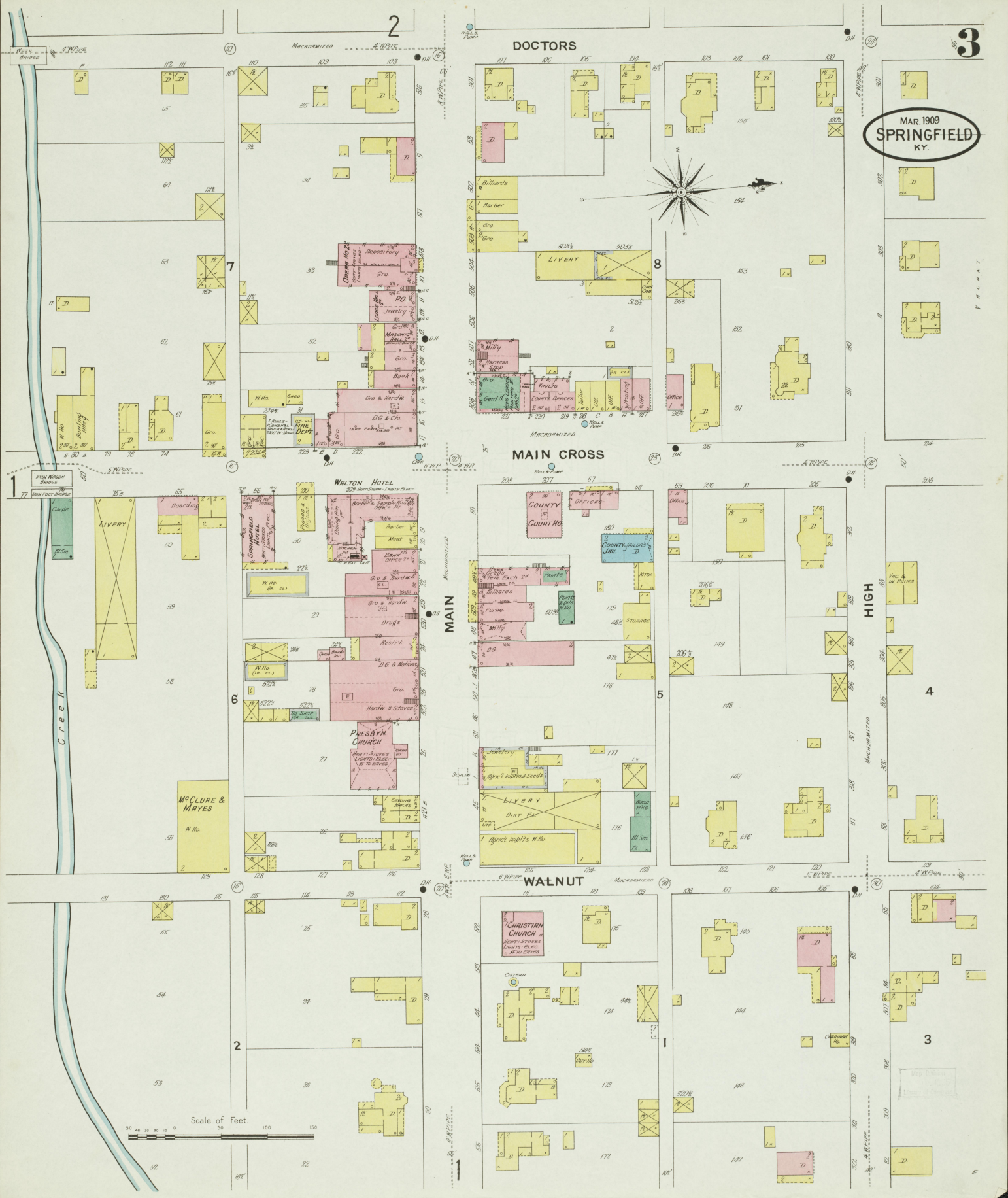
| SPECIALS.                                | SHEET                                    | SHEET   | SHEET                               |
|--|--|---|-------------------------------------|
| A Amer. Tob. Co., Leaf Tob. Warehouse, 1 | F Fire Department, 3                     | M Marks & Green Plating Mill, Sash, Door and Blind Factory, 2 | S St. Catherine of Siena Academy, 4 |
| B Baptist Church, 2                      | J Jarboe, J. W., & Co.'s Roller Mills, 2 | N N. Chubb & Myers, Warehouse, 2                              | Springfield Hotel, 4                |
| C Catholic School, 4                     | L L. & N. R. R. Depot, 1                 | O Opera House, 3  | Lumber Co., 1                       |
| Christian Church, 3                      | La. E. D., Tobacco Re-handling, 2        | P Post Office, 3  | Boiler Mils., 2                     |
| County Court House and Jail, 3           | Literary Society of St. Rose, 4          | R Resbyterian Church, 3                                       | Water and Light Co., 2              |
|  |  | W Walton Hotel, 3   |                                     |
|  |  | Washington County Tobacco Warehouse, 4                        |                                     |
|  |  | Co. Warehouse "B", 4  |                                     |



MAR. 1909  
SPRINGFIELD  
KY.



MAR 1909  
SPRINGFIELD  
KY.



Scale of Feet

DOCTORS

MAIN CROSS

WALNUT

HIGH

2

3

7

8

6

5

4

2

1

3

MAR. 1909  
SPRINGFIELD  
KY.

