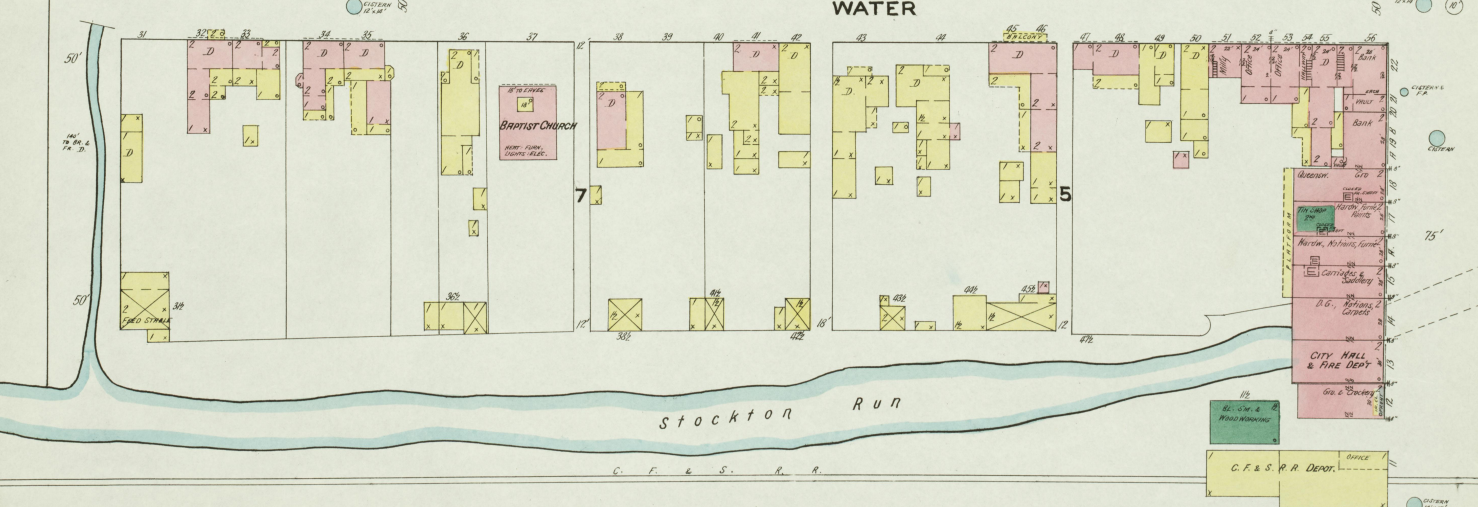
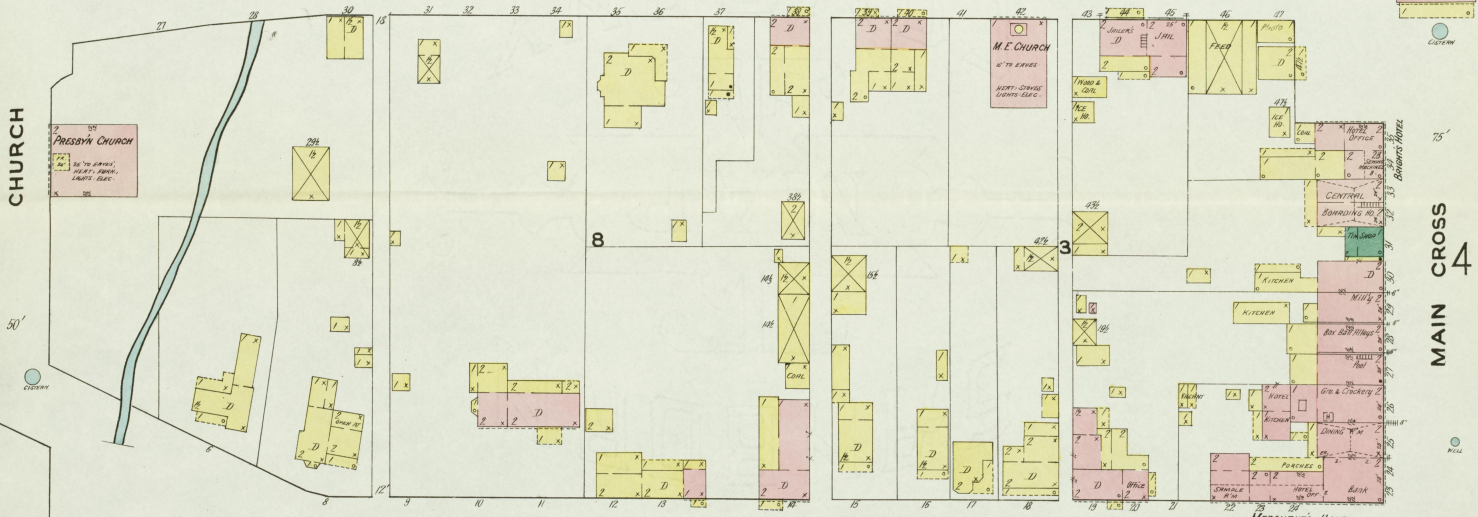
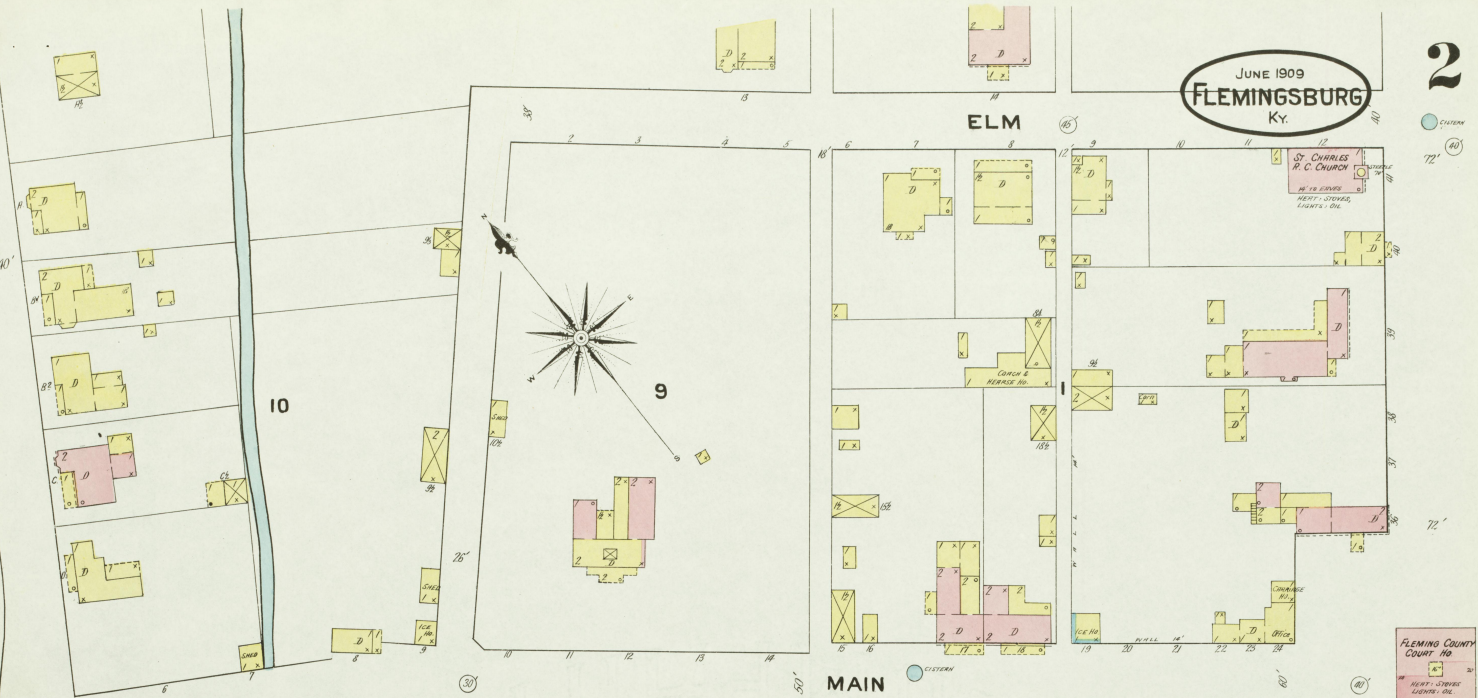


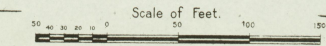
JUNE 1909
FLEMINGSBURG
KY.

2



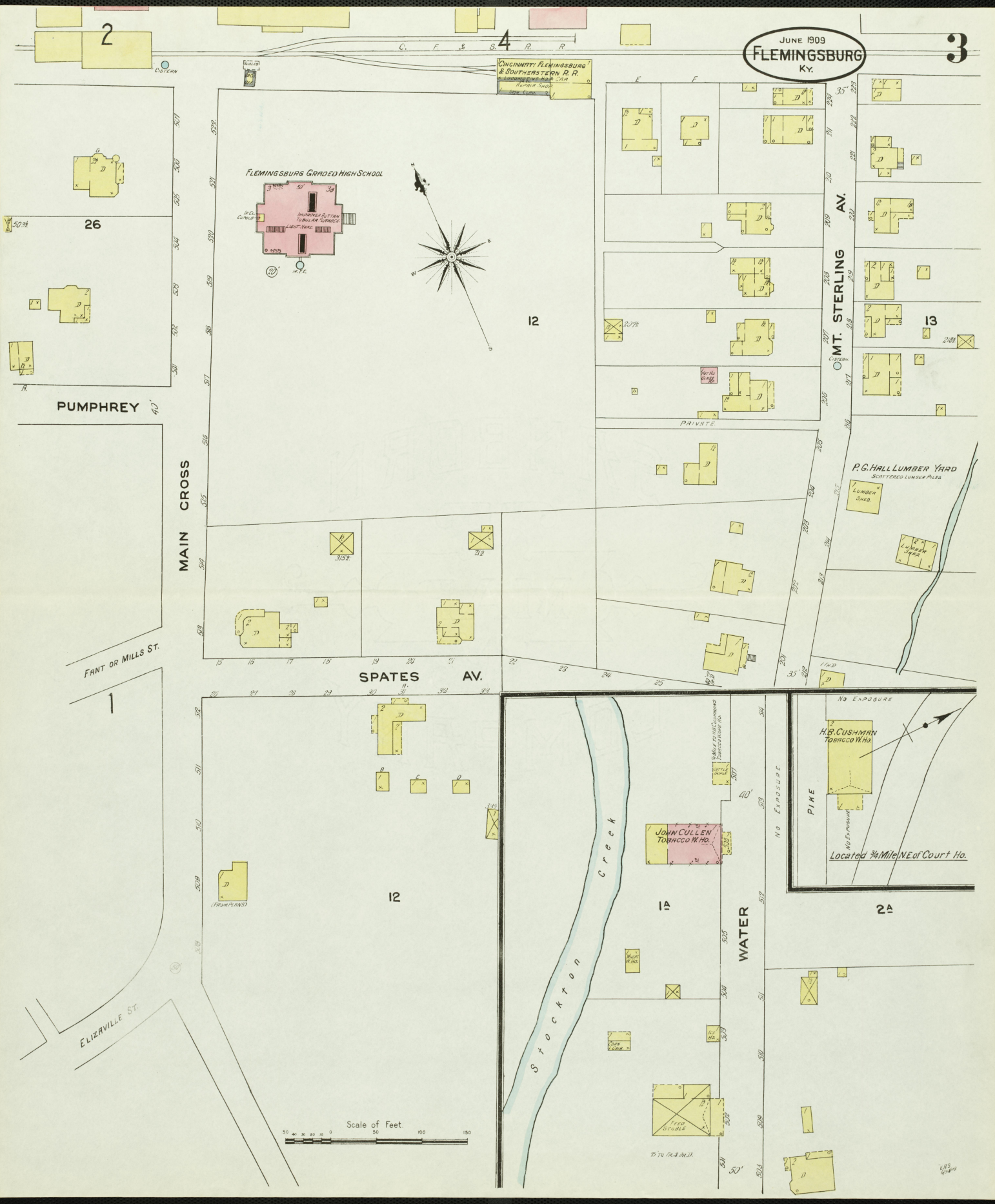
FLEMING COUNTY
COUNT NO
12
1/2
27'

MAIN CROSS
4



N O EXPOSURE

3



FLEMINGSBURG GRADED HIGH SCHOOL

IMPERIAL ELLIOTT
TUMBLER SHEDS
LIGHT-SHED

CINCINNATI FLEMINGSBURG
& SOUTHEASTERN R. R.
ALPHABETICALLY

MT. STERLING
AV.

SPATES
AV.

P.G. HALL LUMBER YARD
300' x 100' LUMBER PILE

LUMBER
SHED

LUMBER
SHED

JOHN CULLEN
TOBACCO W.H.

H.B. CUSHMAN
TOBACCO W.H.

Located 3/4 Mile NE of Court Ho.

Scale of Feet.
0 50 100 150

WATER

Stockton
Creek

MAIN CROSS

PUMPHREY

FANT OR MILLS ST.

ELIZAVILLE ST.

26

12

13

12

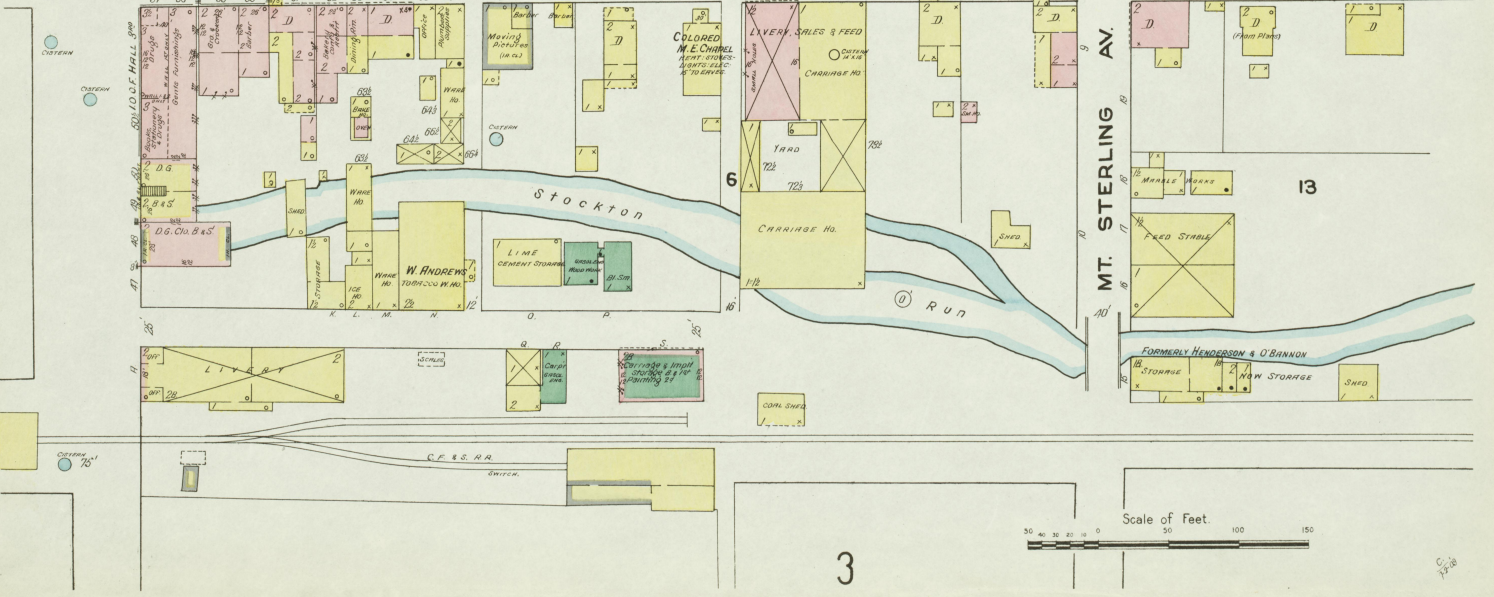
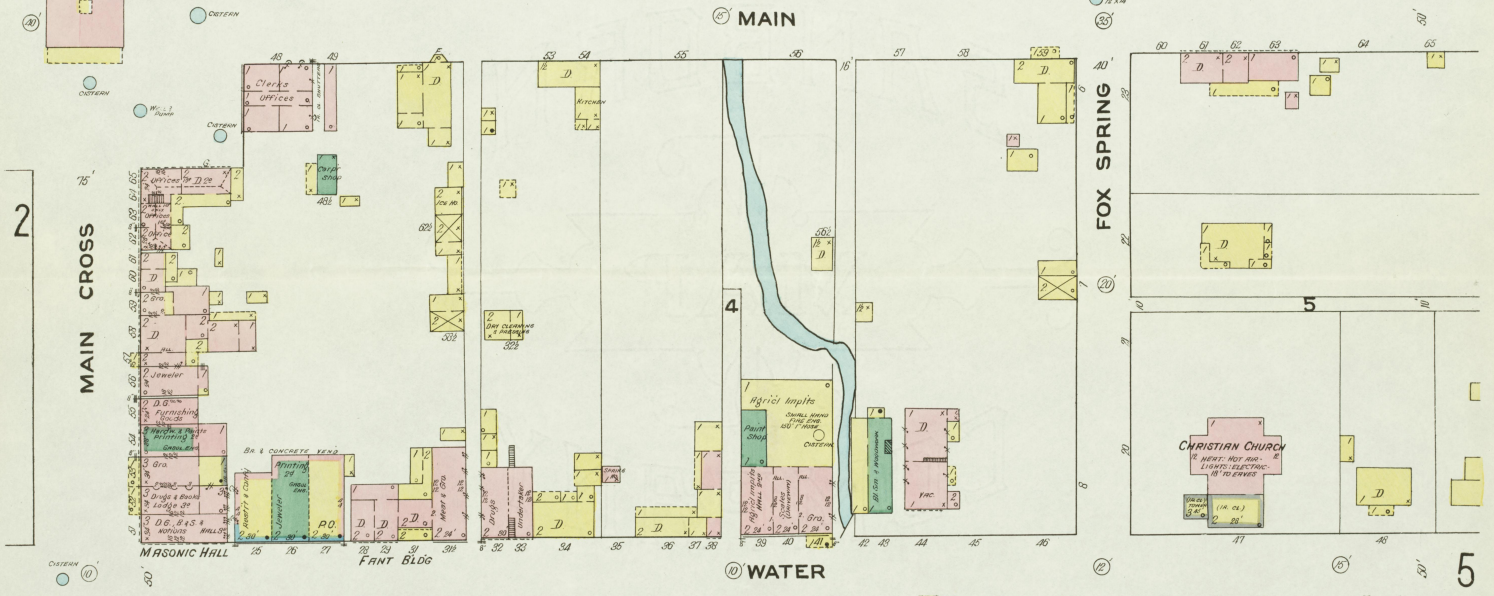
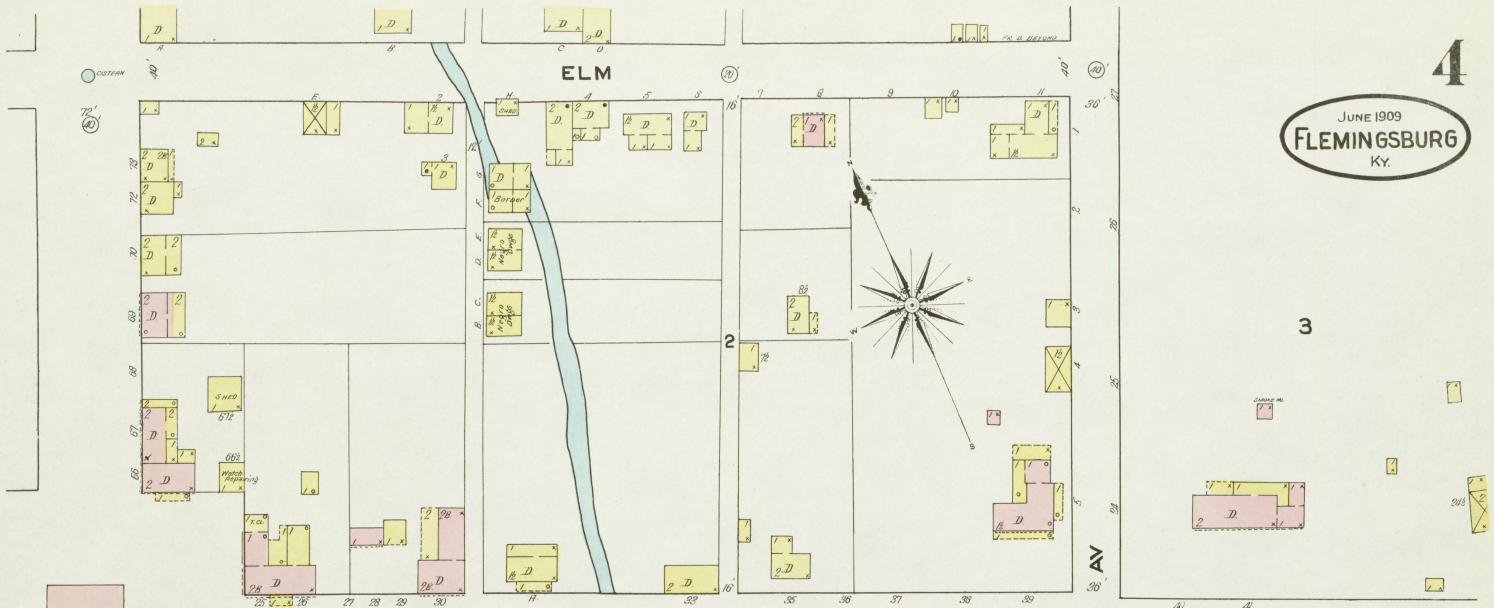
1A

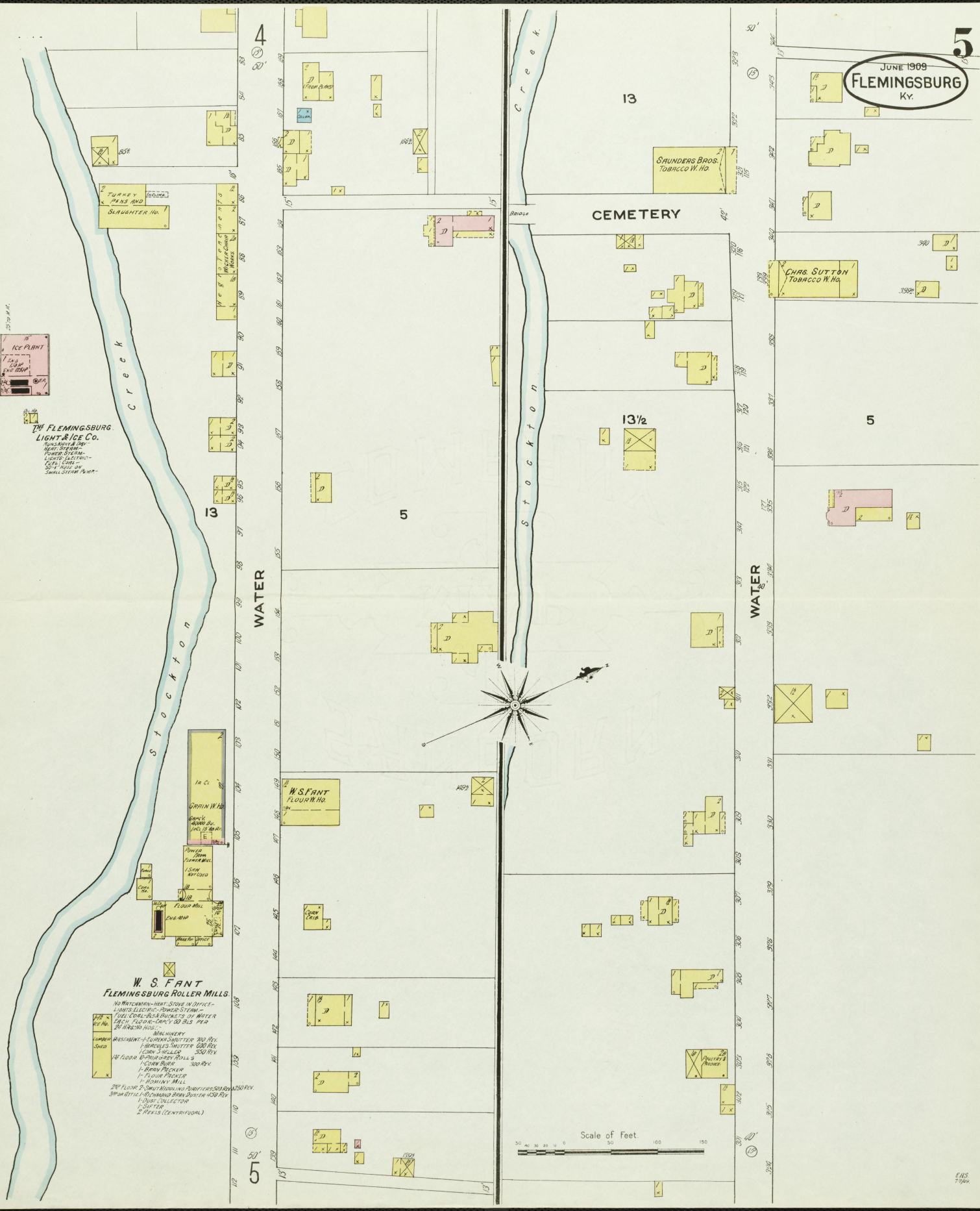
2A

1

2

4





**THE FLEMINGSBURG
LIGHT & ICE CO.**
RUNS RAIL & DP.
HEAD STEAM
POWER SYSTEM
LIGHTS FACTORY
ELECT. COOK
SINK PUMPS IN
SMALL STEAM PUMPS

**W. S. FANT
FLEMINGSBURG ROLLER MILLS**

NO MATCHES - HEAT STOVE IN OFFICE -
1 COND. ELECTRIC POWER SYSTEM -
FULL COR. 2 1/2 BUCKETS OF WATER
EACH FLOOR - CAP'S 50 SLS PER
2 1/2 HOURS HO. -
BUILDING
BASEMENT - 1 SUPER SHUTTER 200 REV.
1 PARALLEL SHUTTER 200 REV.
1 CON. SHELTER 300 REV.
1st FLOOR - 2 SHUTTER ROLLERS
1 CON. SHUTTER 300 REV.
1 BERRY PUNCHER
1 FLOUR PUNCHER
1 HOMOY MILL
2nd FLOOR - 2 SHUTTER ROLLERS 300 REV.
3rd FLOOR - 2 SHUTTER ROLLERS 300 REV.
1 JUST COLLECTOR
1 SHUTTER
2 PAILS (CENTRIFUGAL)

