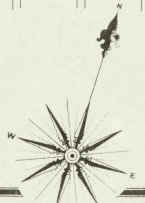


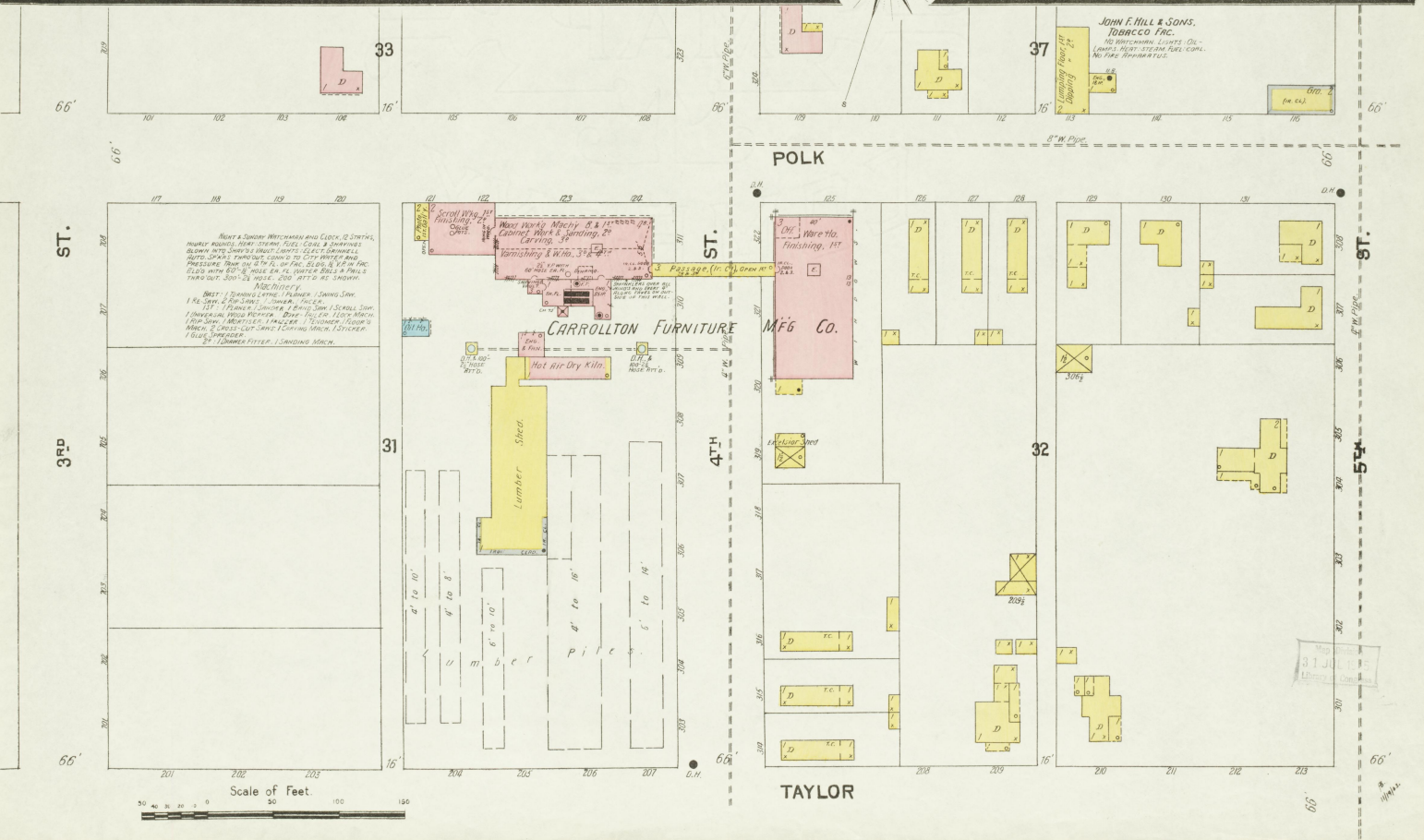
INDEX.

Table with columns for 'STREETS', 'Second', and 'Specials'. Lists various locations like 'Christian Church', 'City Hall', 'Water Works and Elec. St. Station', etc.

KEY section with symbols for roof types (FLAT WALL, GABLE ROOF, etc.), window types, and other architectural features.



NOTE: Views of Kentucky River shown from Ohio River by the Company's aerial photography. Plans of Mill and Cell... (Detailed technical notes about the map's accuracy and features.)

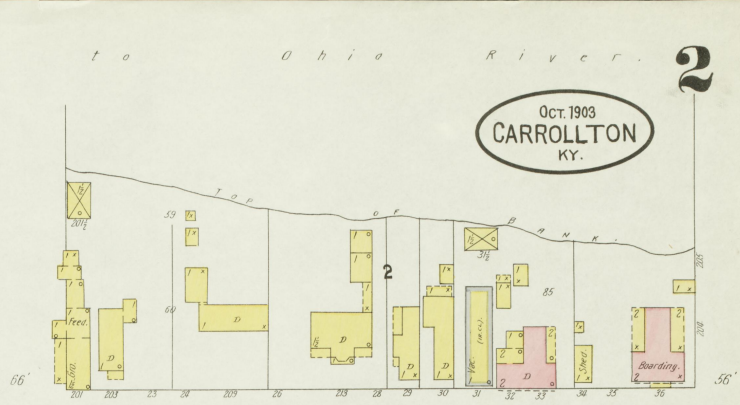


No exposure

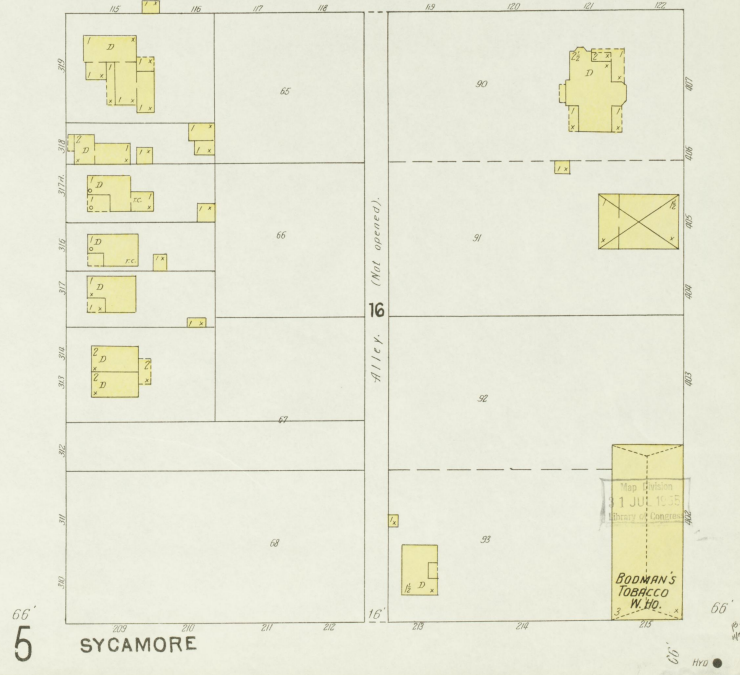
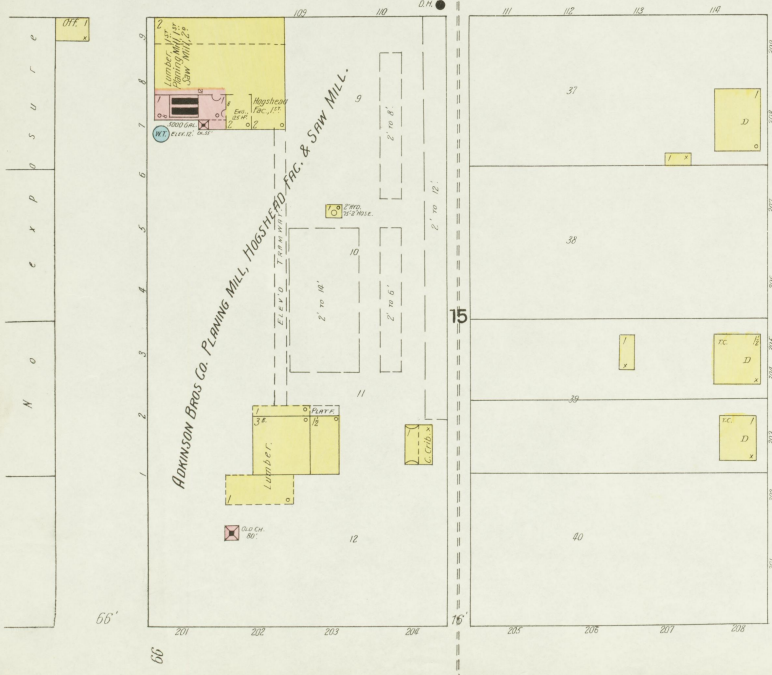
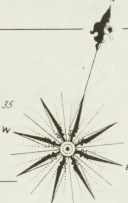
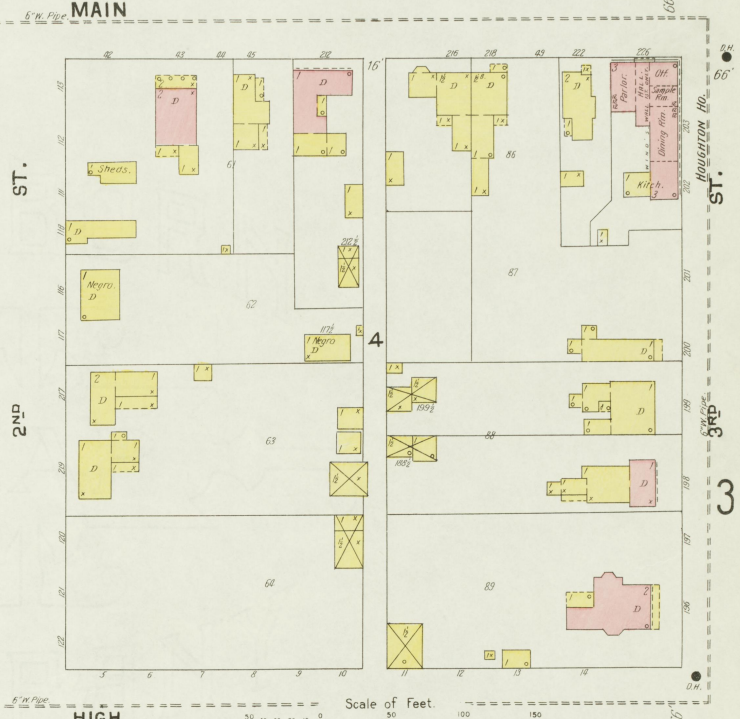
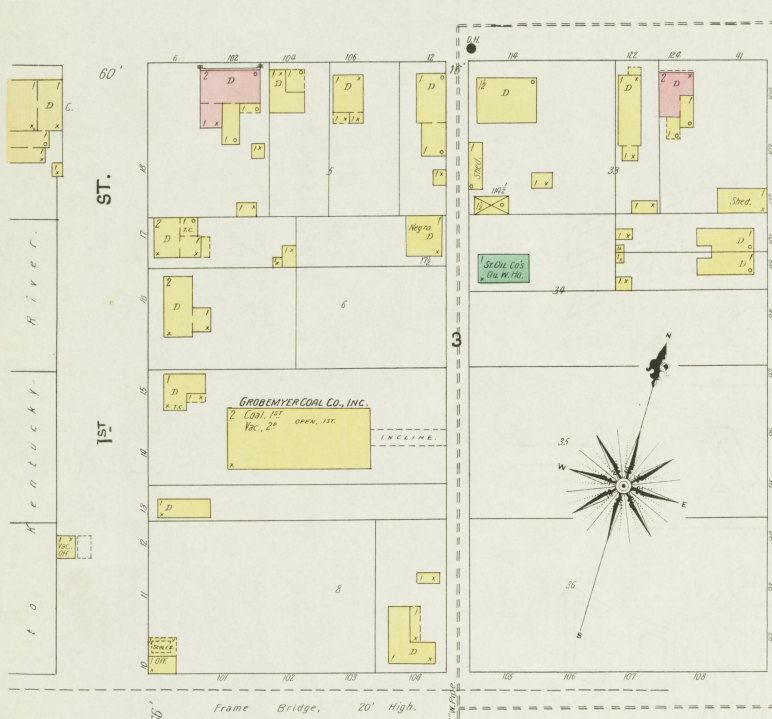
to Ohio River.

2

OCT. 1903  
CARROLLTON  
KY.



MAIN



SYCAMORE

5

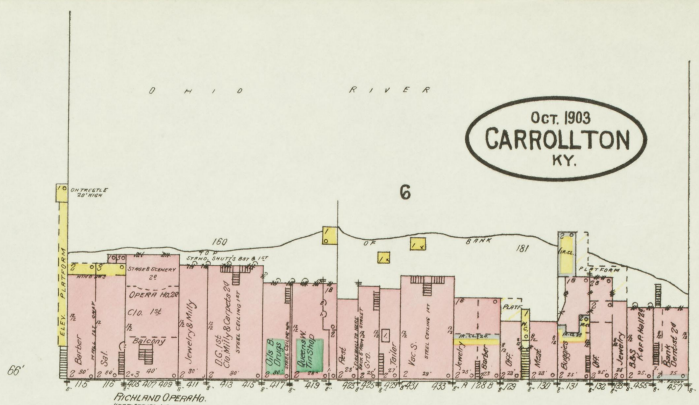
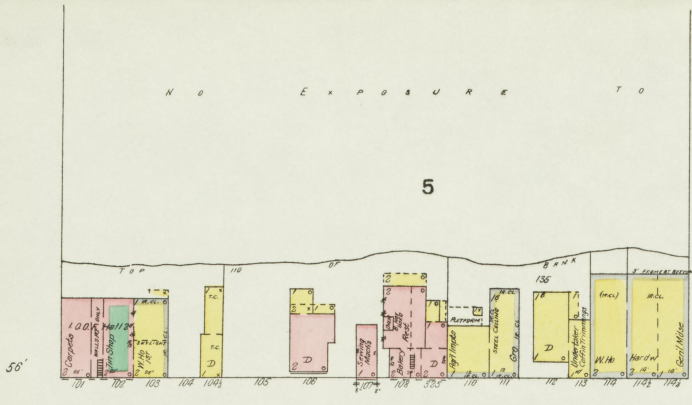
OCT. 1903  
CARROLLTON  
KY.

N O E X P O S U R E T O

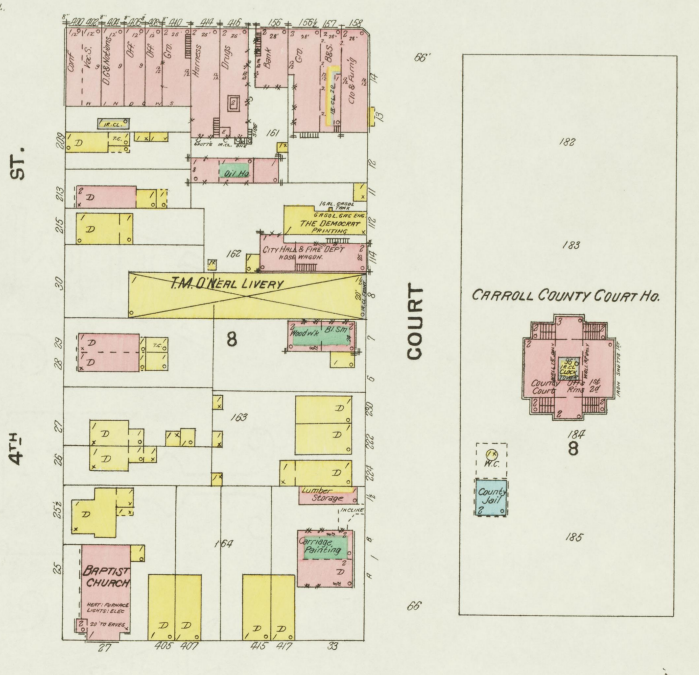
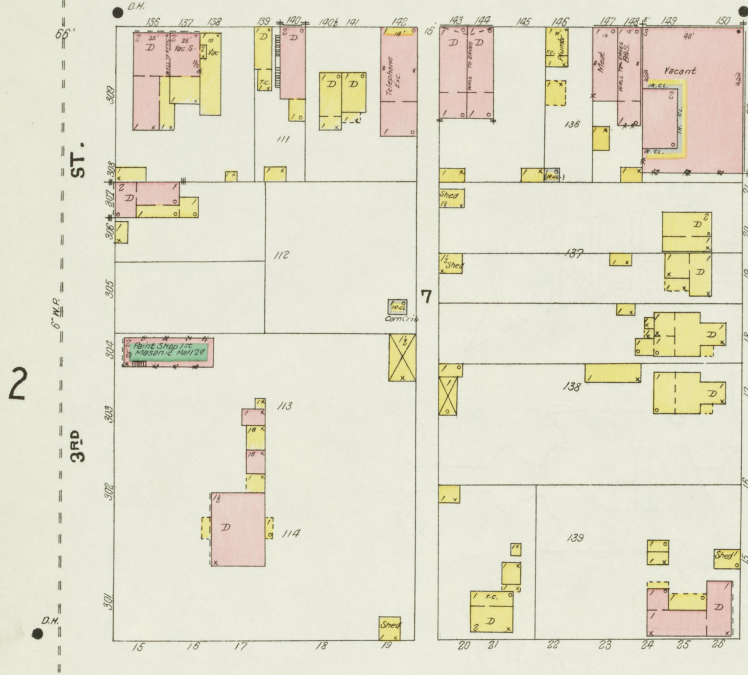
D N I O R I V E R

5

6

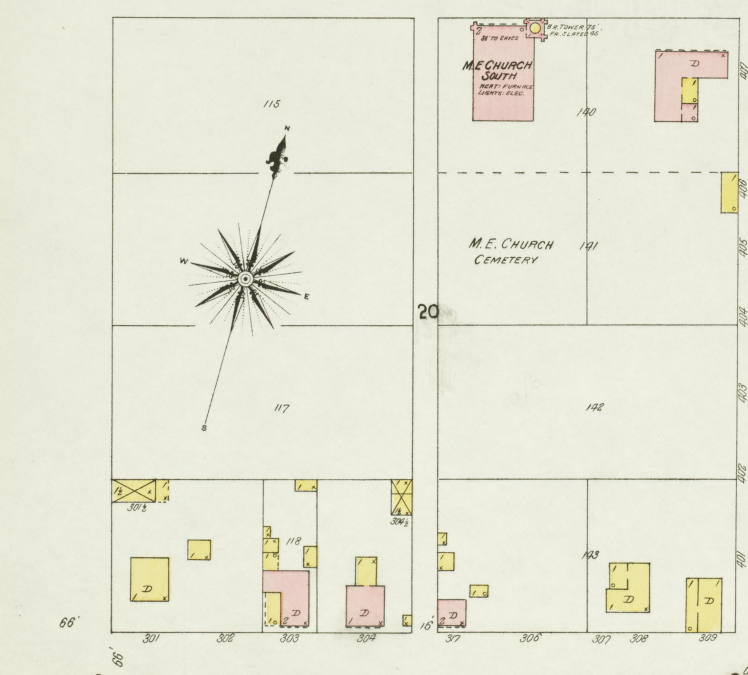


6" N.P. MAIN



Scale of Feet. 0 50 100 150

6" N.P. HIGH



6" N.P. SYCAMORE

2

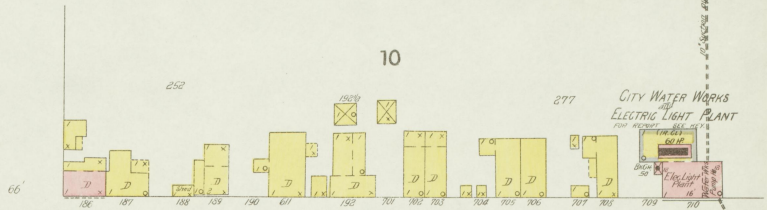
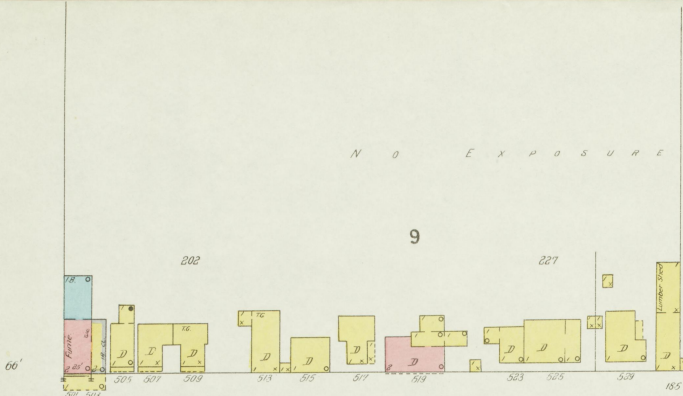
4

66'

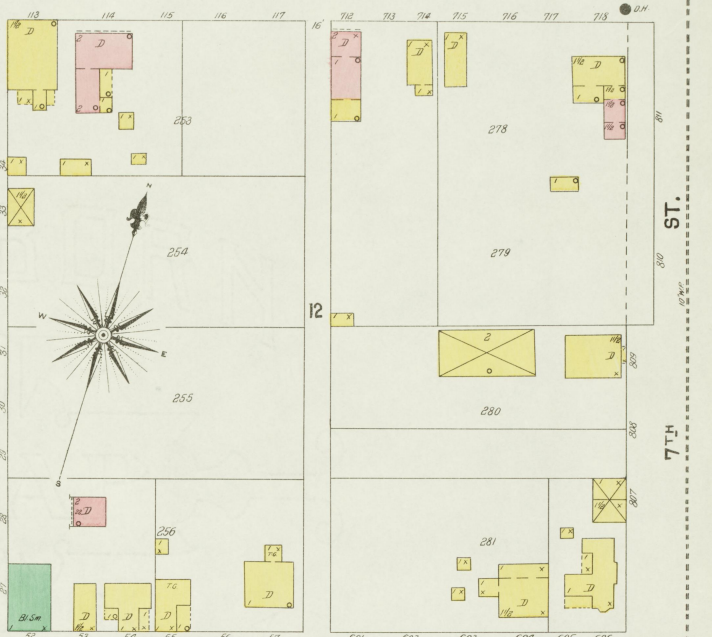
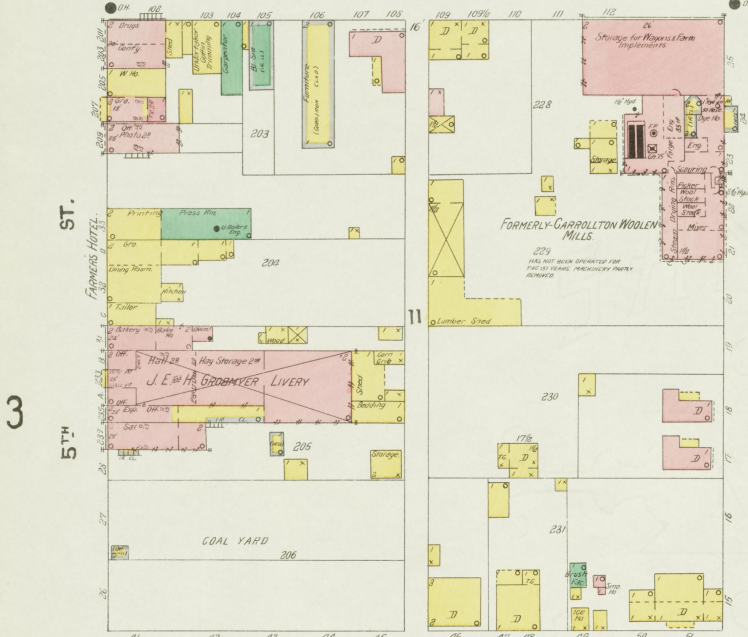
66'

66'

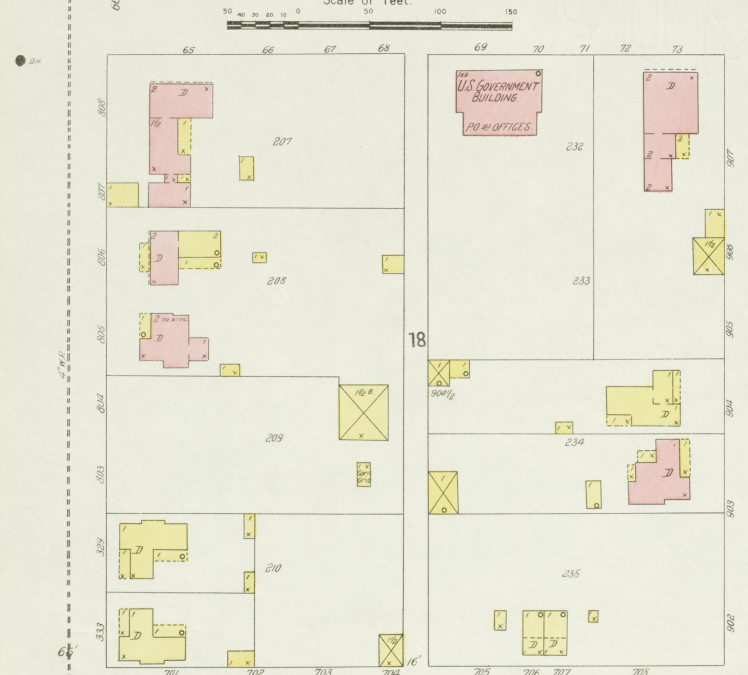
N O E X P O S U R E T O O H I O R I V E R



MAIN



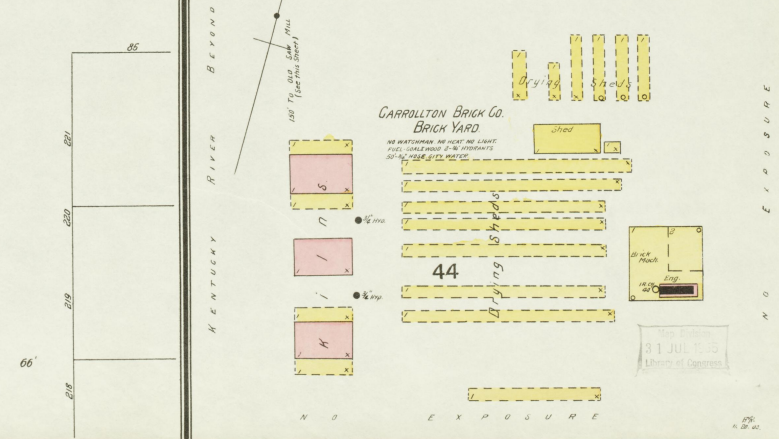
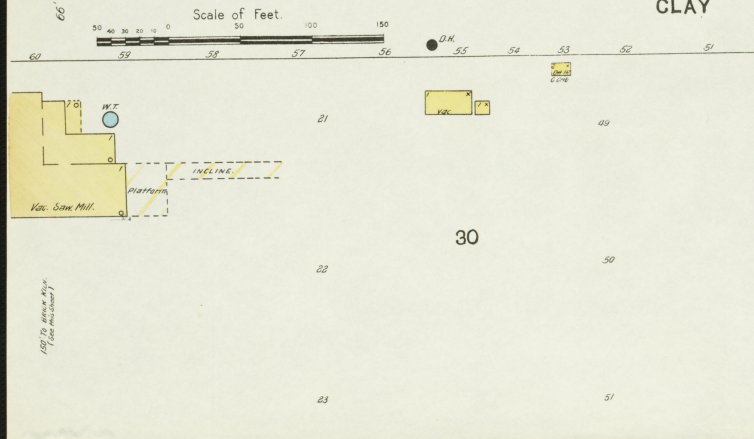
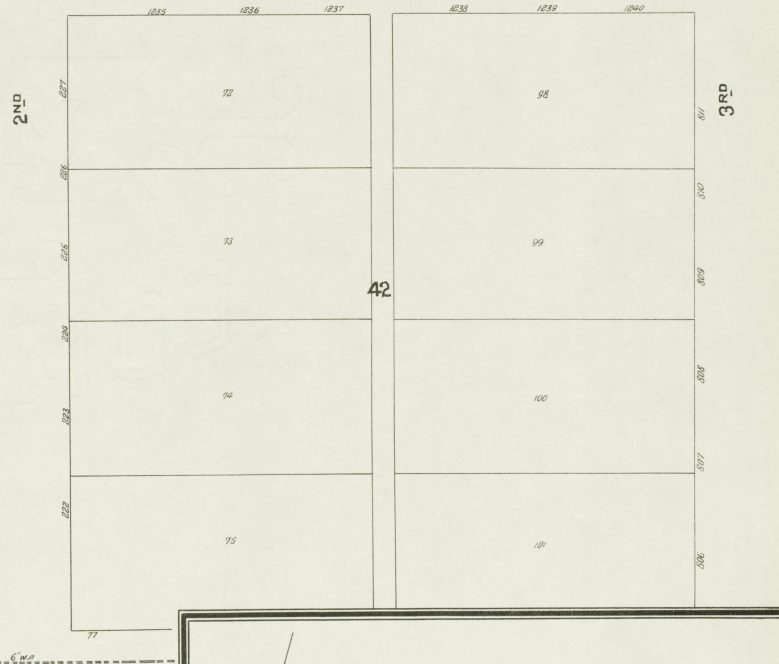
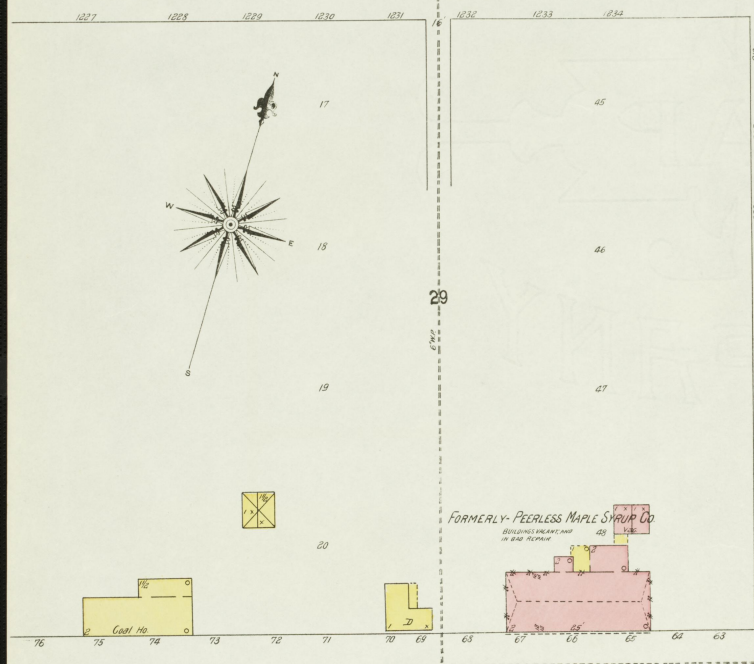
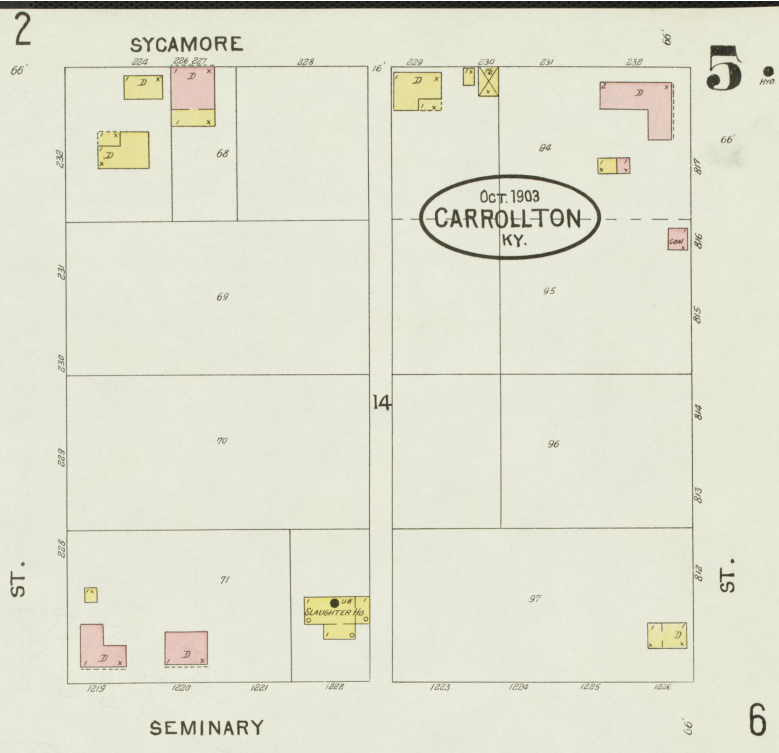
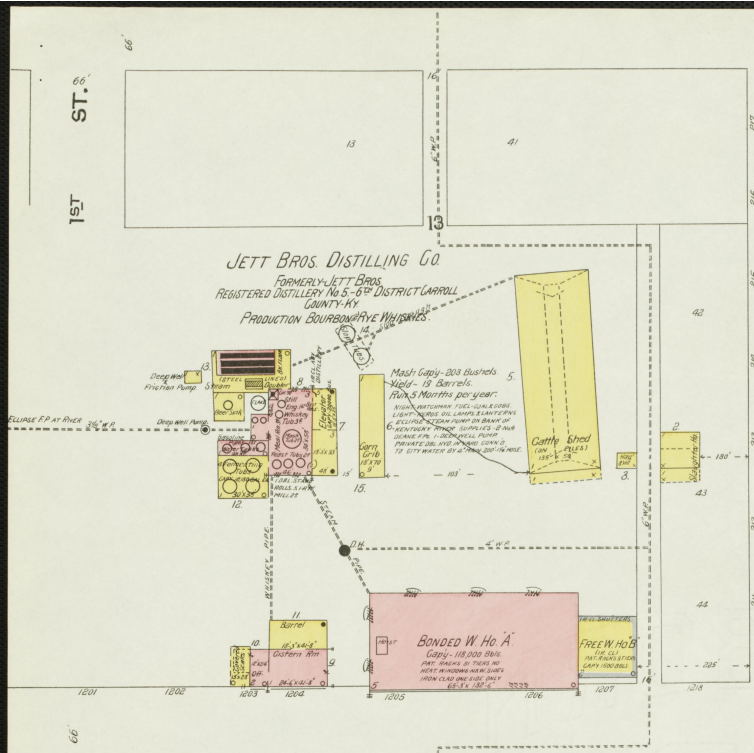
Scale of Feet.

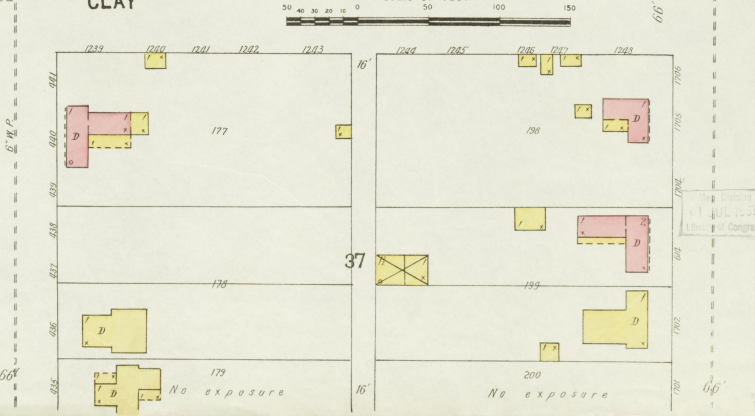
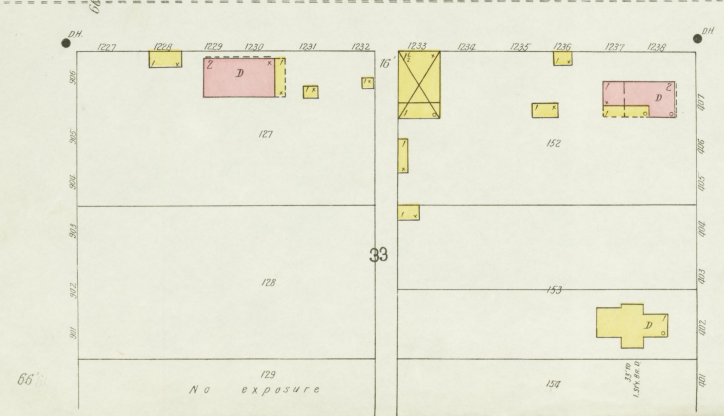
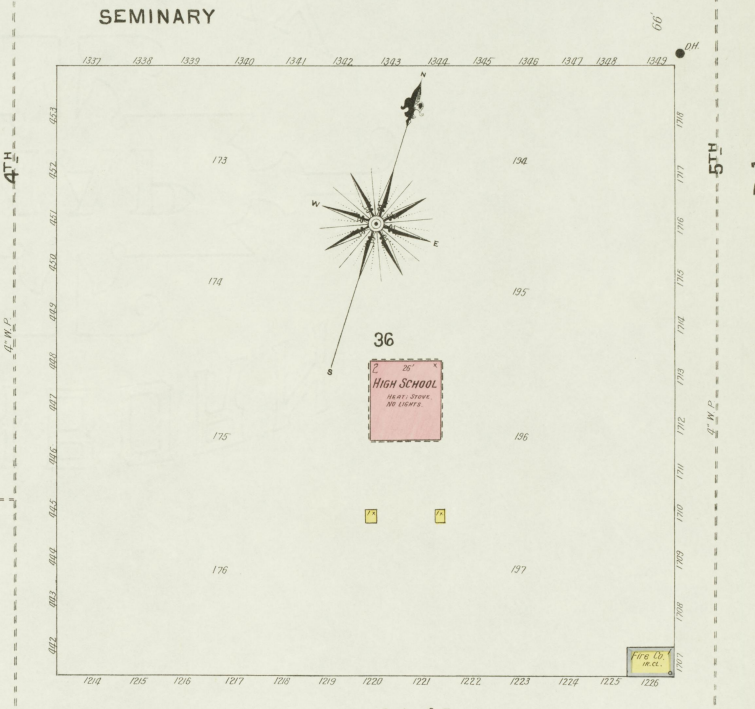
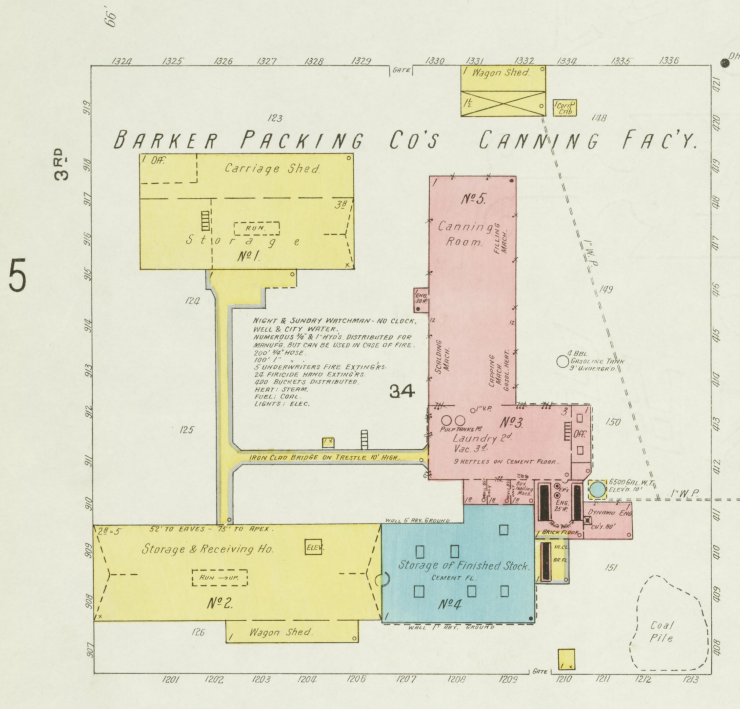
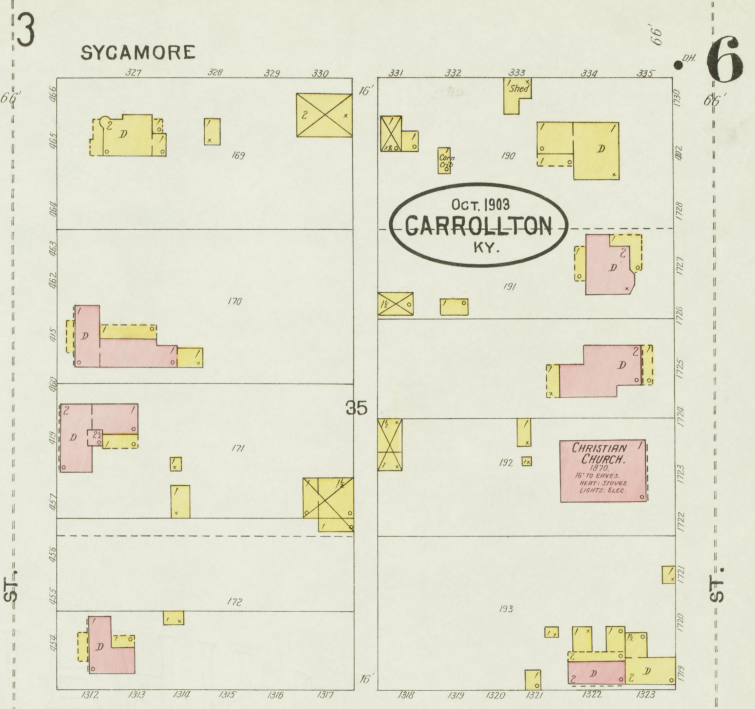
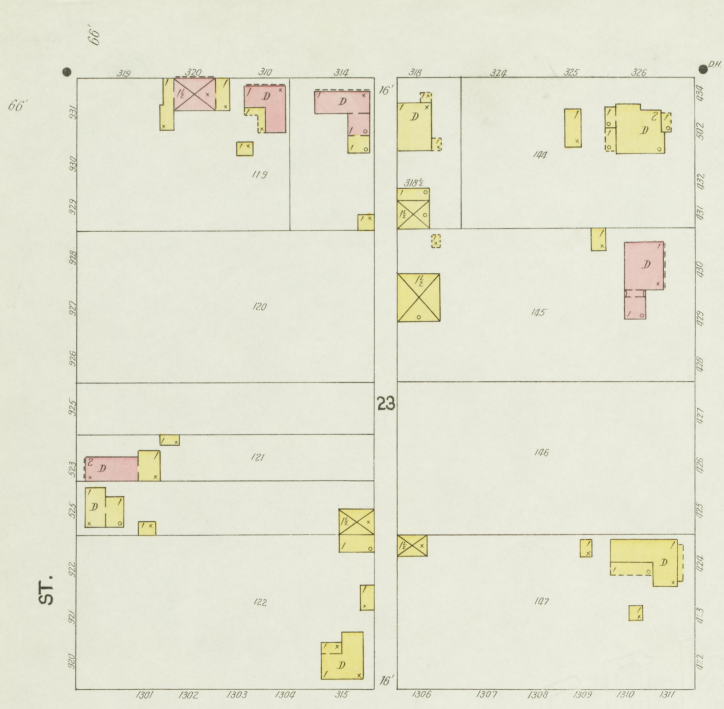


HIGH



SYCAMORE



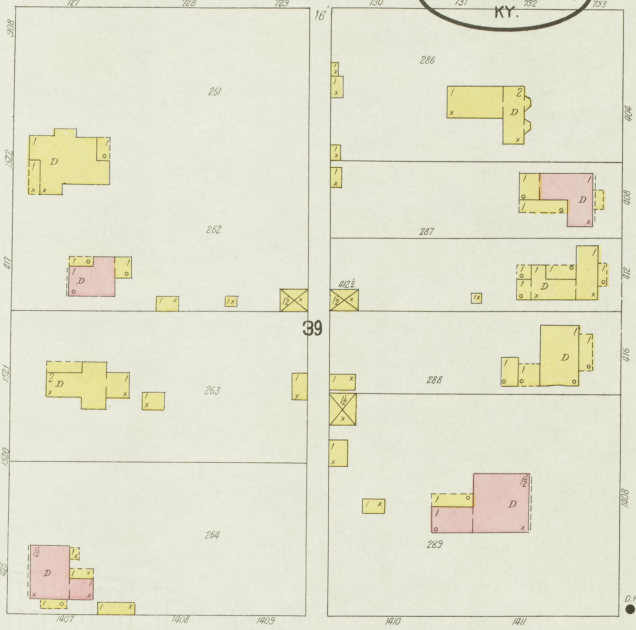


Copyright 1903  
 U.S. Dept. of the Interior  
 Bureau of Land Management

OCT. 1903  
CARROLLTON  
KY.

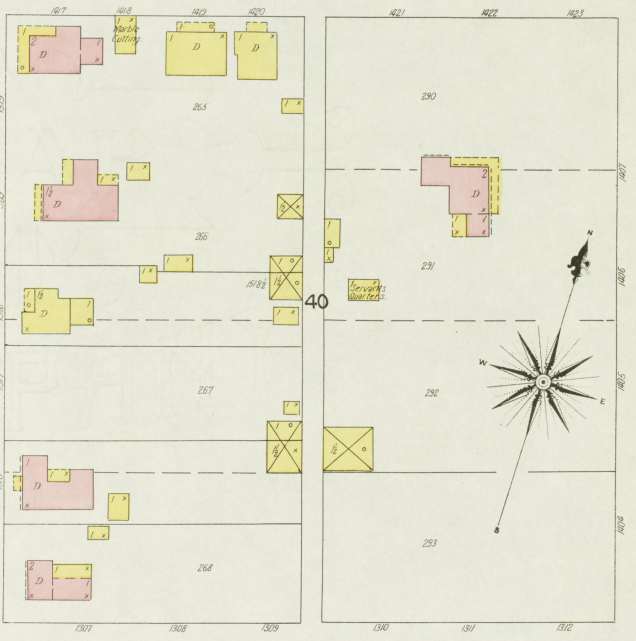
4

SYCAMORE

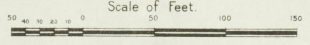
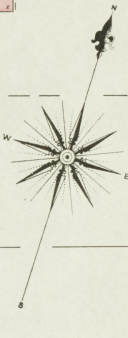


**CAMERON & CO. FLOUR MILL.**  
NO MATCHMAKING AND LIGHTS. FEET:  
12" x 6" SQUARE CHURNS OF BRASSY ROLLERS, 1 1/2 HIGH  
STRONG OF LOAN ROLLER 1/2 FEET THICK x 1/2  
4" x 2" SHAW PULVERIZER 1 1/2 DIAMETER. REEL 15 GAL. P.O.  
REEL 2 SOUTH 1550 REV. LOAN SCOURER 2500 P.M.V.  
M.F.F.C. SHAFTHOLE.

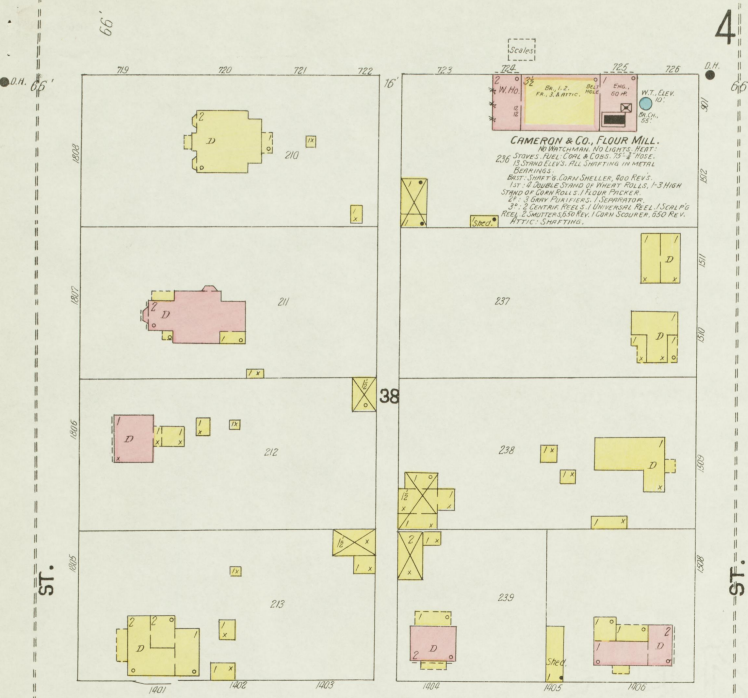
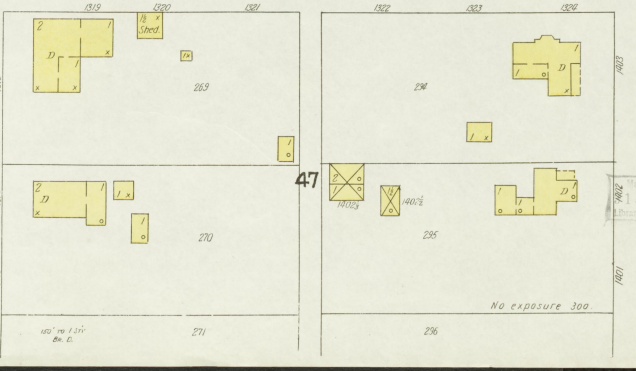
SEMINARY



**M.E. SMALL**  
Carpt Shop



CLAY

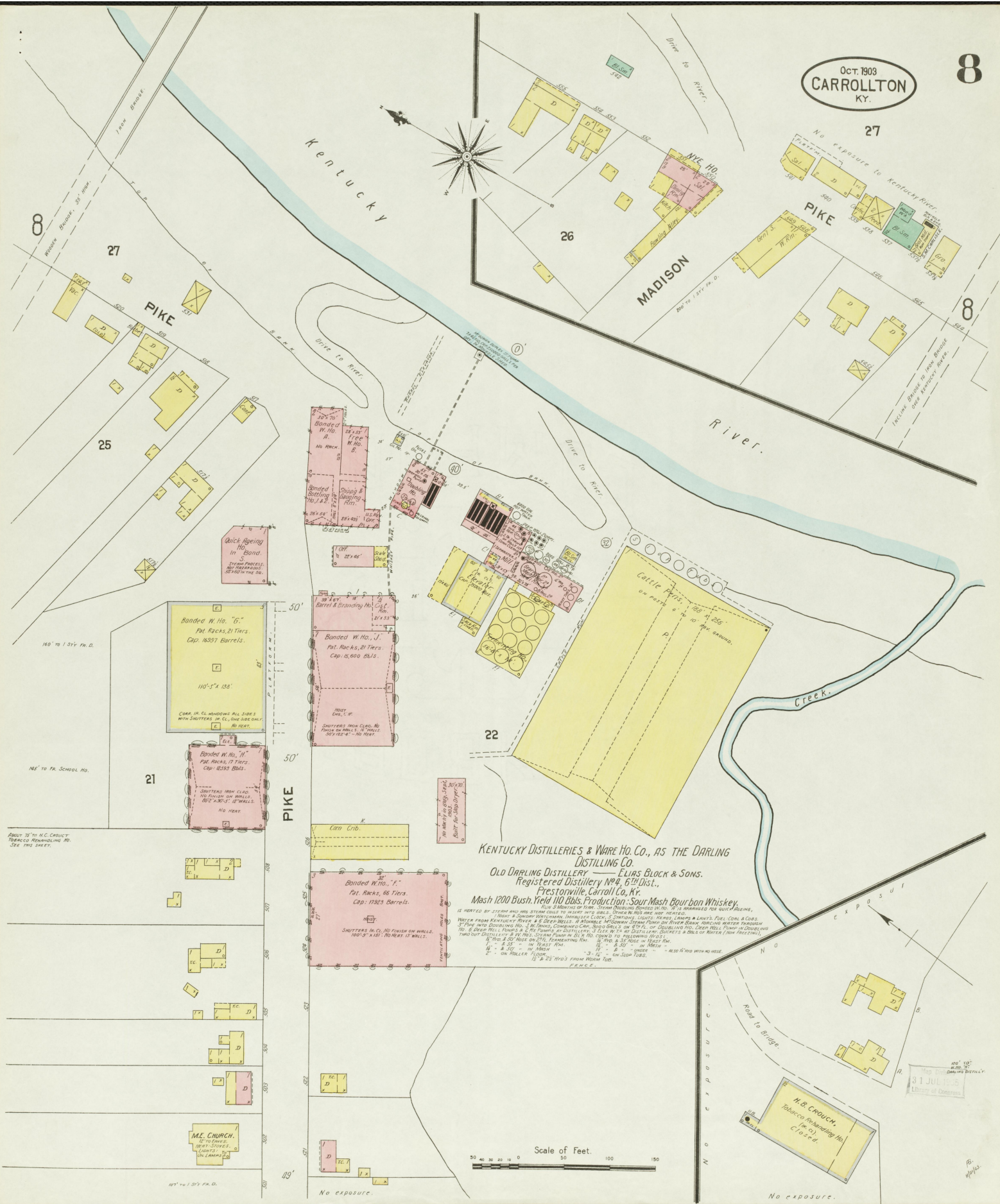


**St. Johns Cath. Church**  
Cemetery

140' to 134' 6".  
No exposure 300

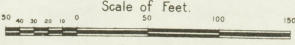
OCT 1903  
 CARROLLTON  
 KY.

8



KENTUCKY DISTILLERIES & WARE HO. CO., AS THE DARLING  
 DISTILLING CO.  
 Old Darling Distillery — ELIAS BLOK & SONS.  
 Registered Distillery No. 6<sup>th</sup> Dist.,  
 Prestonsville, Carroll Co., Ky.  
 Mash 1200 Bush. Yield 110 Bbls. Production: Sour Mash Bourbon Whiskey.

IS HEATED BY STEAM AND HAS STEAM COILS TO HEAT THE LIQUOR. — LIQUOR IS BOILED AND THE WASTE  
 IS HEATED BY STEAM AND HAS STEAM COILS TO HEAT THE LIQUOR. — LIQUOR IS BOILED AND THE WASTE  
 IS HEATED BY STEAM AND HAS STEAM COILS TO HEAT THE LIQUOR. — LIQUOR IS BOILED AND THE WASTE  
 IS HEATED BY STEAM AND HAS STEAM COILS TO HEAT THE LIQUOR. — LIQUOR IS BOILED AND THE WASTE



JUL 15 1905  
 Library of Congress

H. B. CROUCH,  
 Tobacco Re-Exporting Co.,  
 Closed.