

51
51
51

VIEWS
STATE COLLEGE
— OF —
KENTUCKY.

1897-98 (')

4.2
8

The State College of Kentucky.

Established upon the government land grant foundation of 1862, and additionally endowed by the State in 1880, is the head institution of the Public School System in Kentucky. Young men and young women are admitted to the benefits of tuition in all classes and courses of study on identical conditions.

The Kentucky Agricultural Experiment Station.

Organized in the interests of farmers, conducts experimental research, the results of which are published in bulletins and distributed gratuitously.

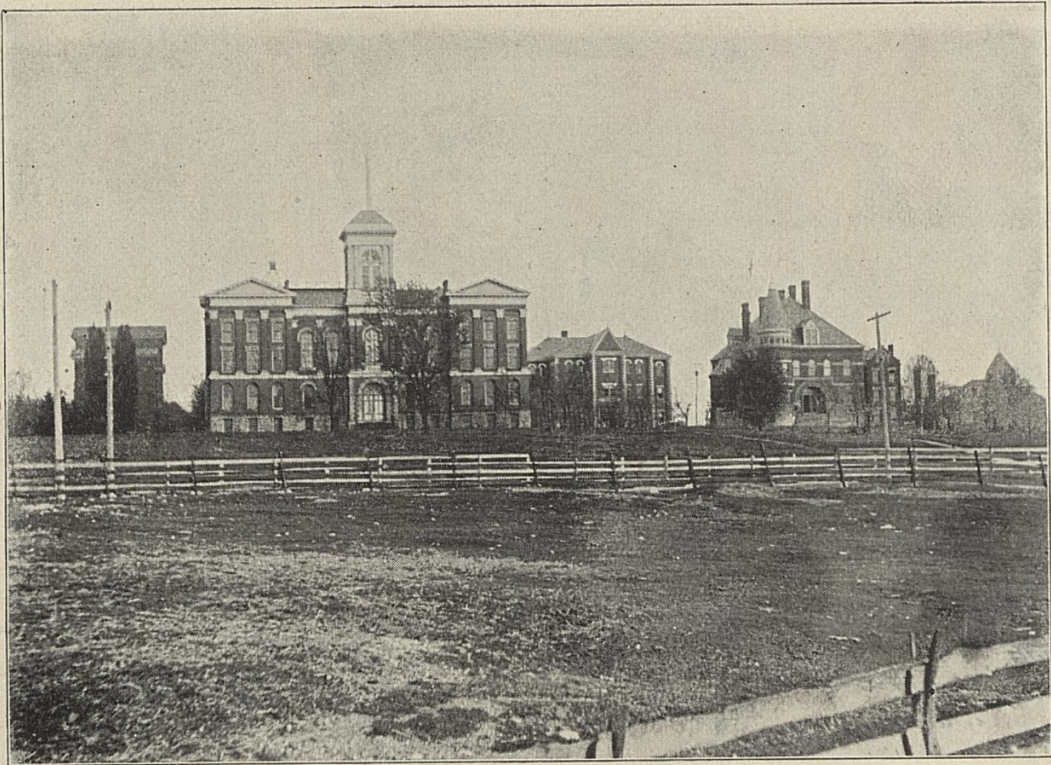
Location.—Lexington, the most important railroad center in Kentucky, in the heart of the far-famed "Blue-Grass Region."

Grounds, Buildings and Equipment.

These represent in value \$475,000. The CAMPUS, consisting of fifty-two acres, is laid out in walks, drives, and lawns, and planted with a choice variety of trees and shrubs. The EXPERIMENT STATION Farm, of forty-eight and one-half acres, lies three-quarters of a mile south from the College. The BUILDINGS on the campus number twelve; those on the Farm, four. The most of these appear as illustrations in this issue. EIGHT LABORATORIES—Mechanical Engineering, Electrical Engineering, Chemical, Physical, Botanical, Zoological, Physiological, and Geological—are the best equipped in the State. A LARGE MUSEUM, containing the State Geological Survey Collection is a recent addition to the College equipment.

Faculty, Departments, and Courses of Study.

The heads of the fifteen Departments constitute the Faculty. The total number of professors and instructors is twenty-eight. There are eight courses of study, each leading to a degree.



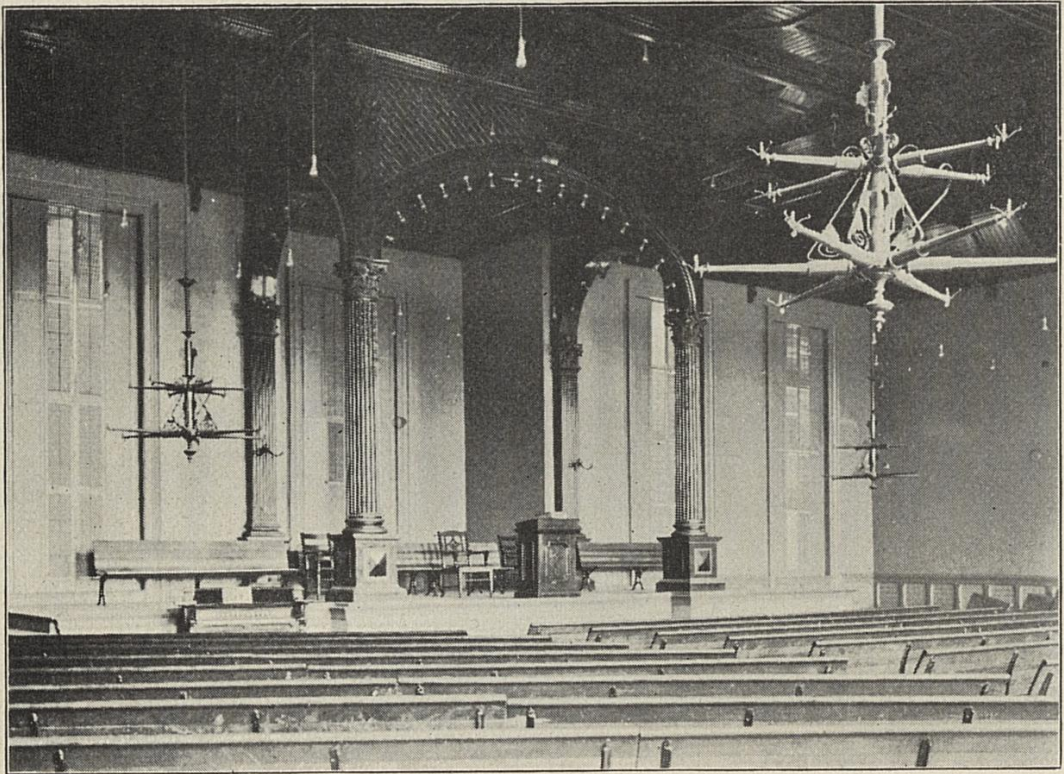
GENERAL VIEW OF BUILDINGS FROM THE WEST.



PRESIDENT JAS. K. PATTERSON.



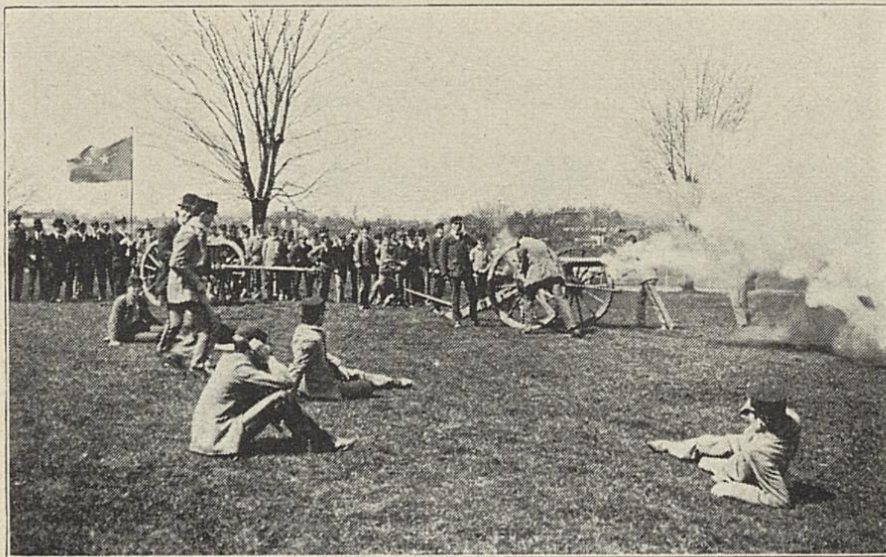
MAIN BUILDING.



CHAPEL — MAIN BUILDING.



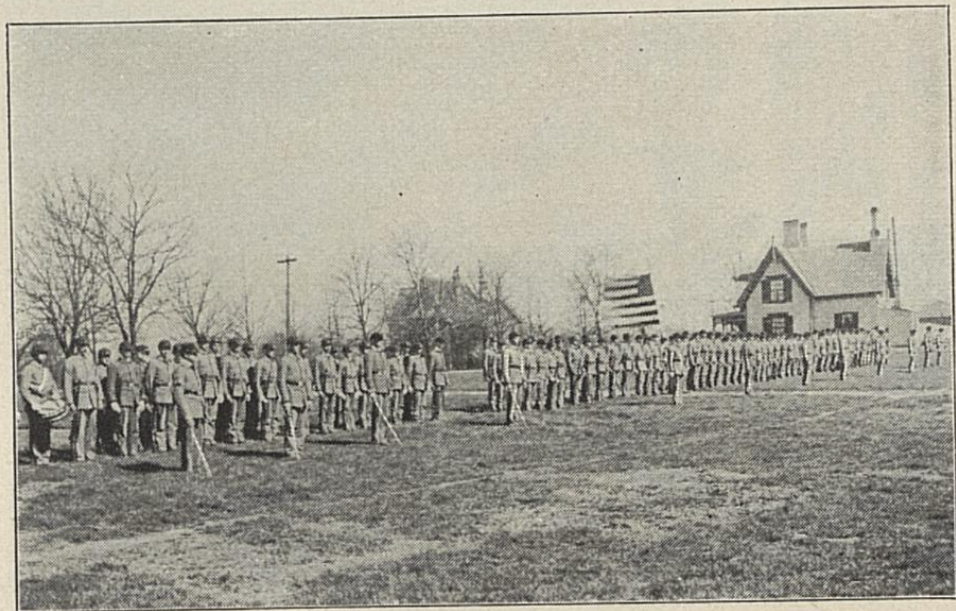
PRESIDENT'S AVENUE.



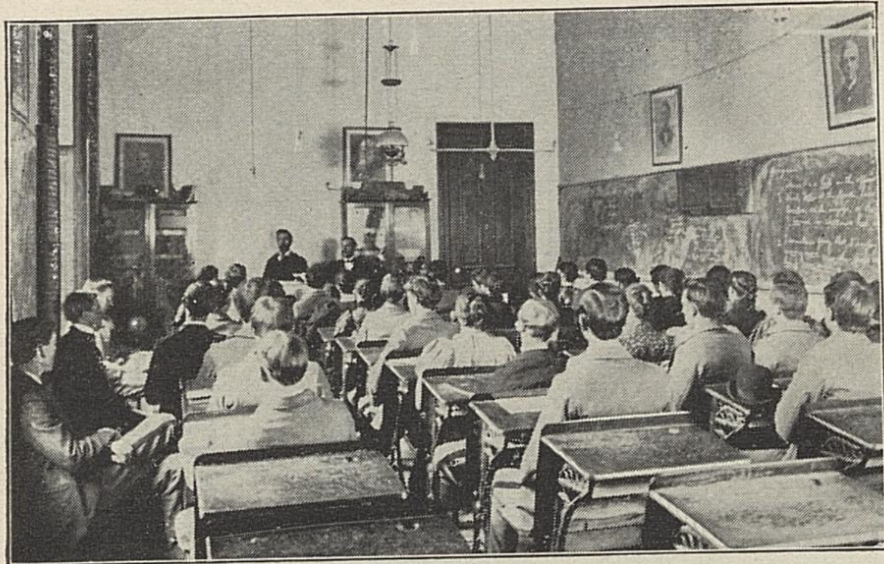
ARTILLERY PRACTICE.



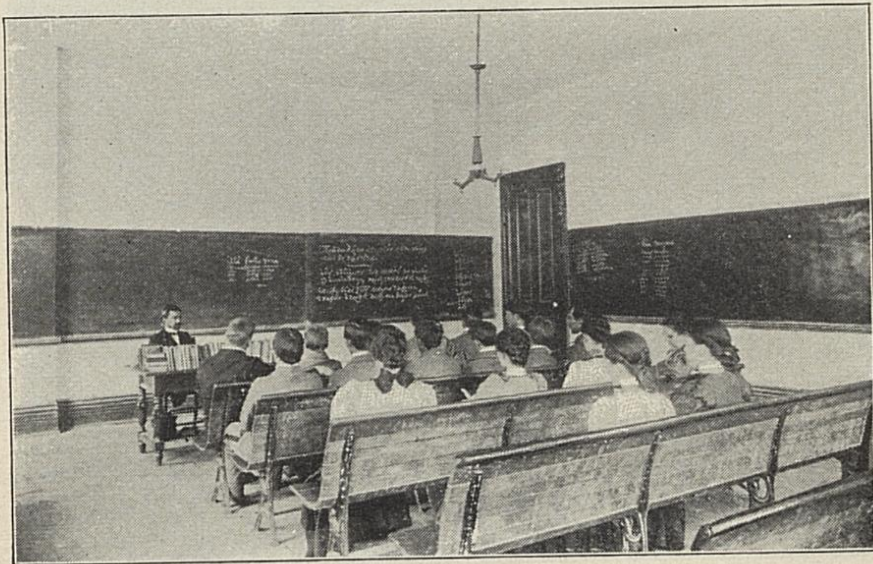
ARTILLERY.



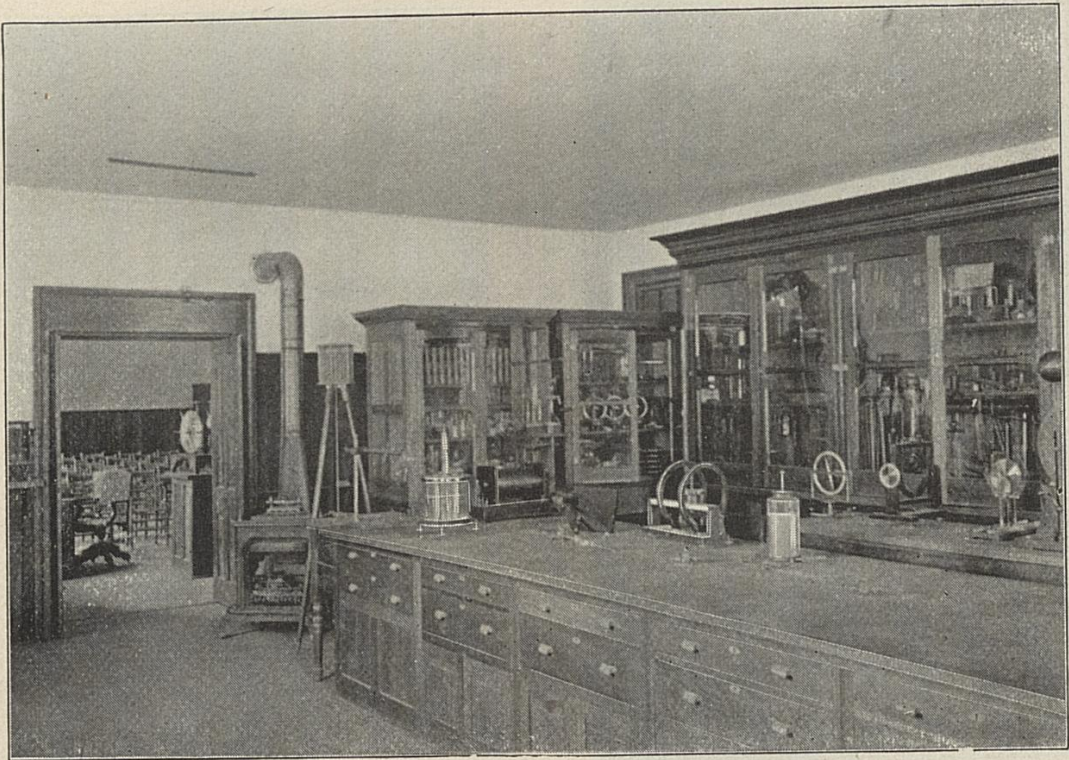
BATTALION.



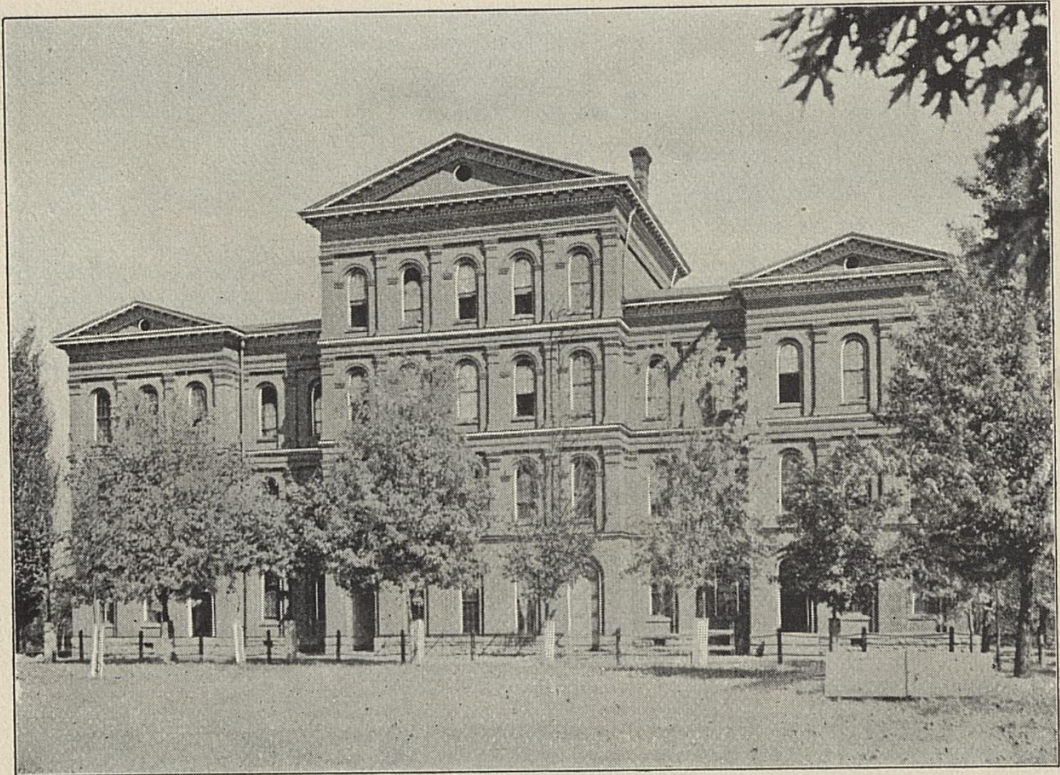
CLASS ROOM — NORMAL DEPARTMENT.



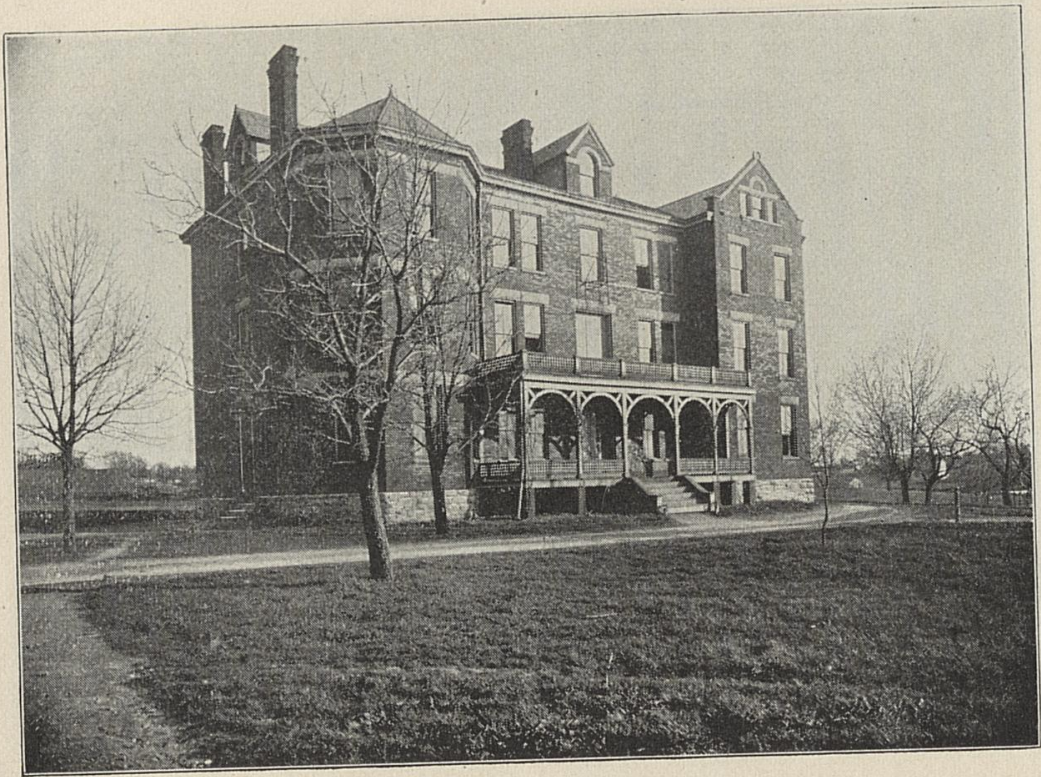
CLASS ROOM — CLASSICAL DEPARTMENT.



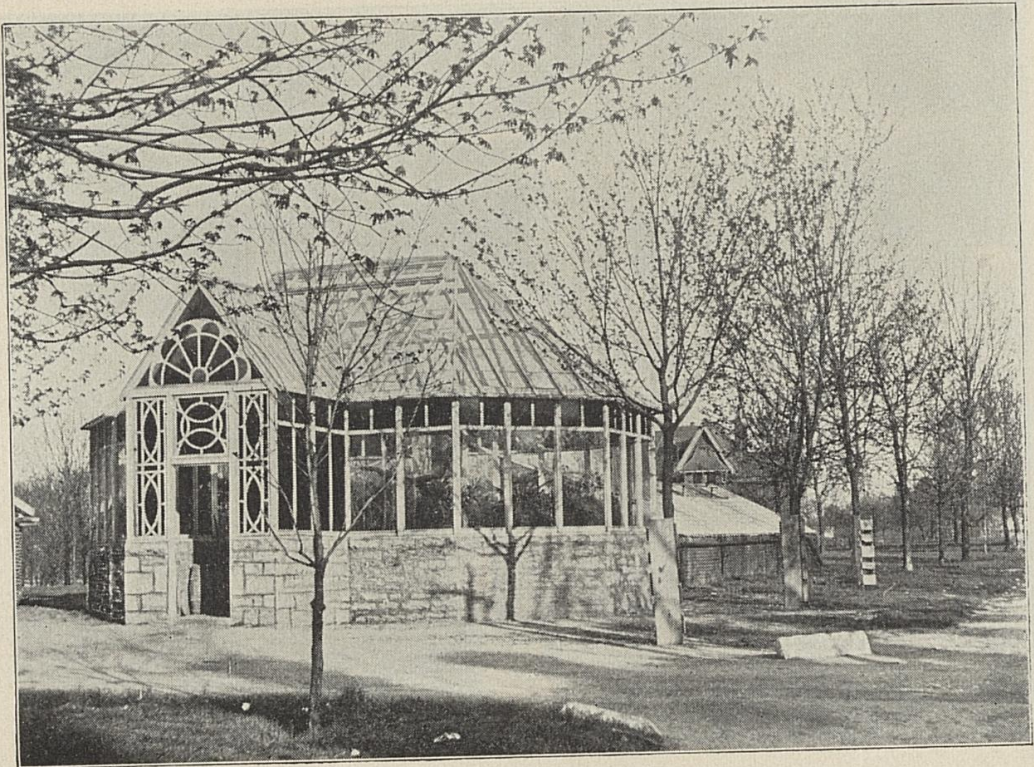
LABORATORY — PHYSICS.



OLD DORMITORY.



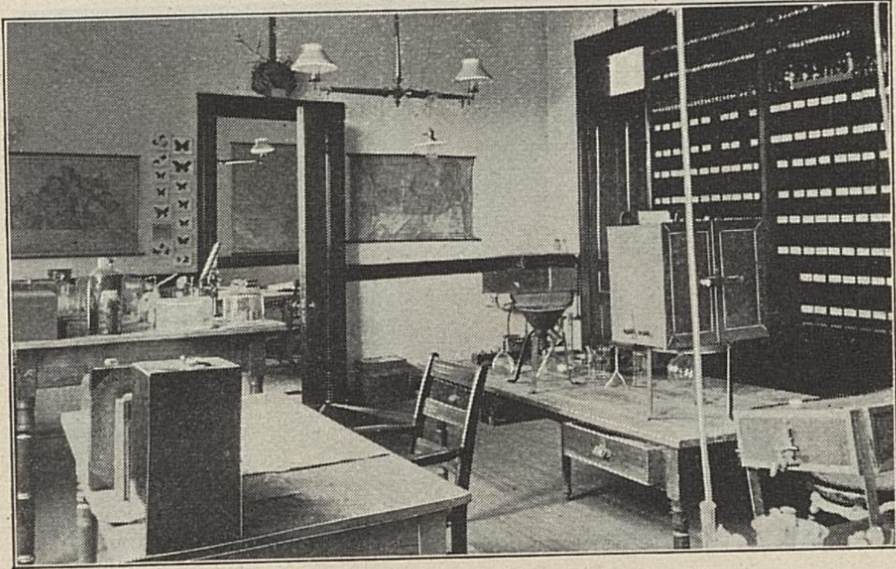
NEW DORMITORY.



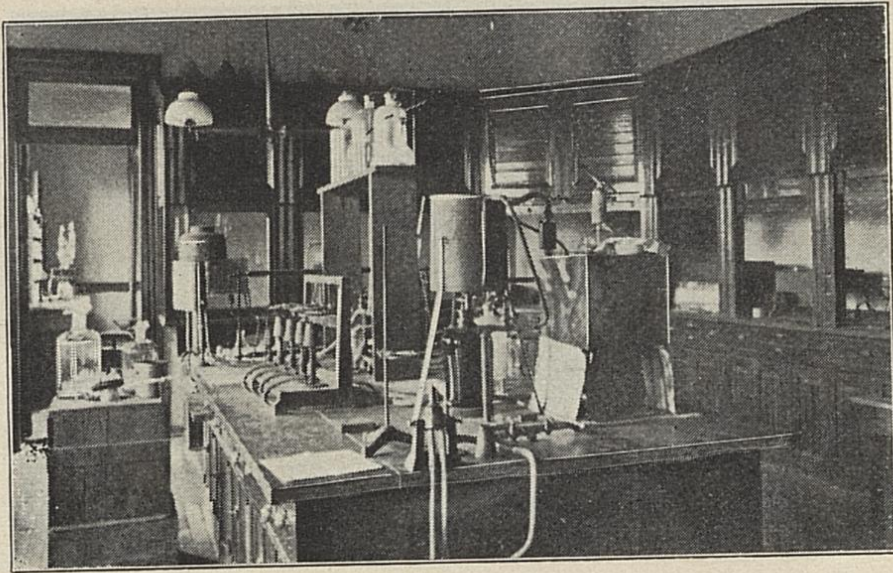
GREEN HOUSE.



EXPERIMENT STATION BUILDING.

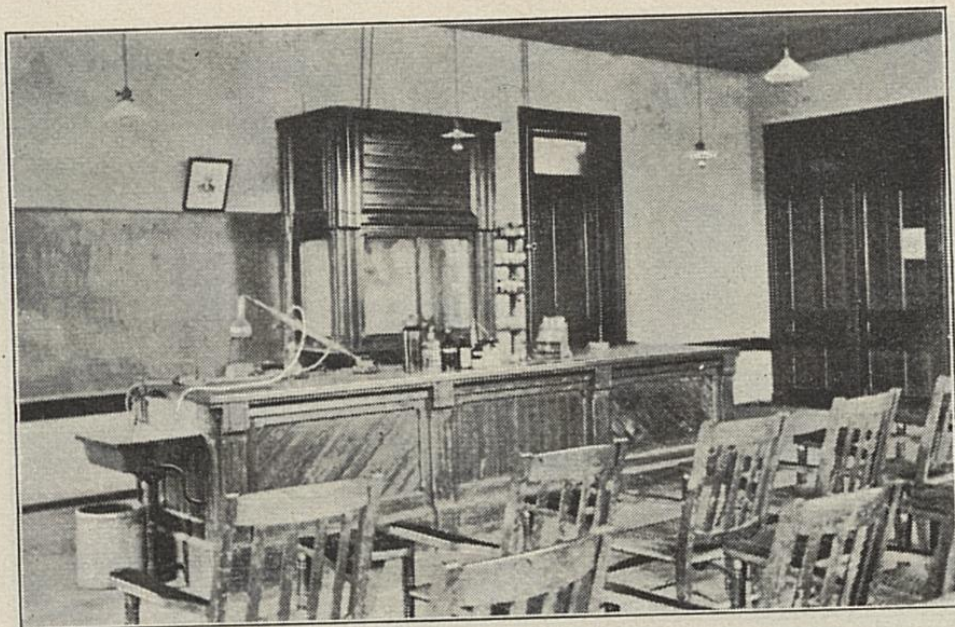


ENTOMOLOGY — EXPERIMENT STATION.

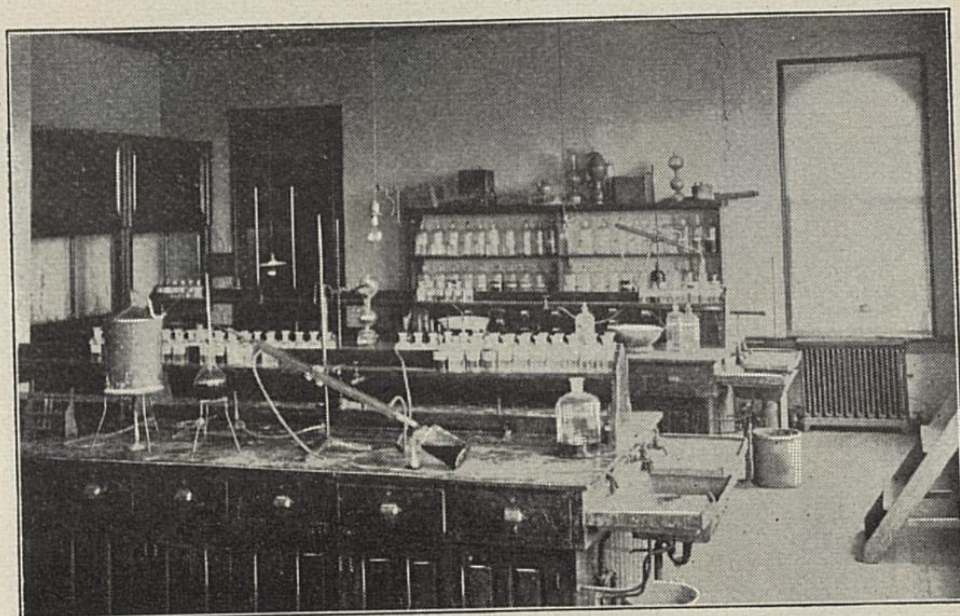


CHEMICAL LABORATORY — EXPERIMENT STATION.

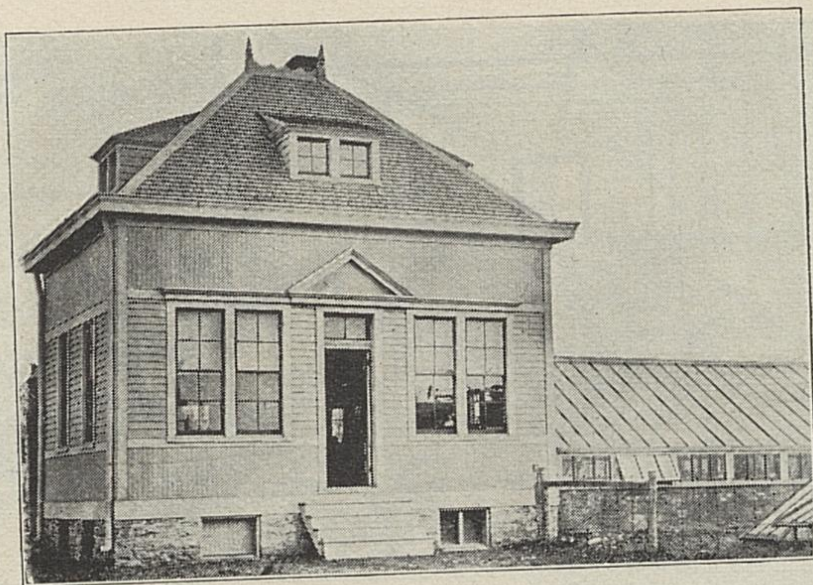
[1897-98]



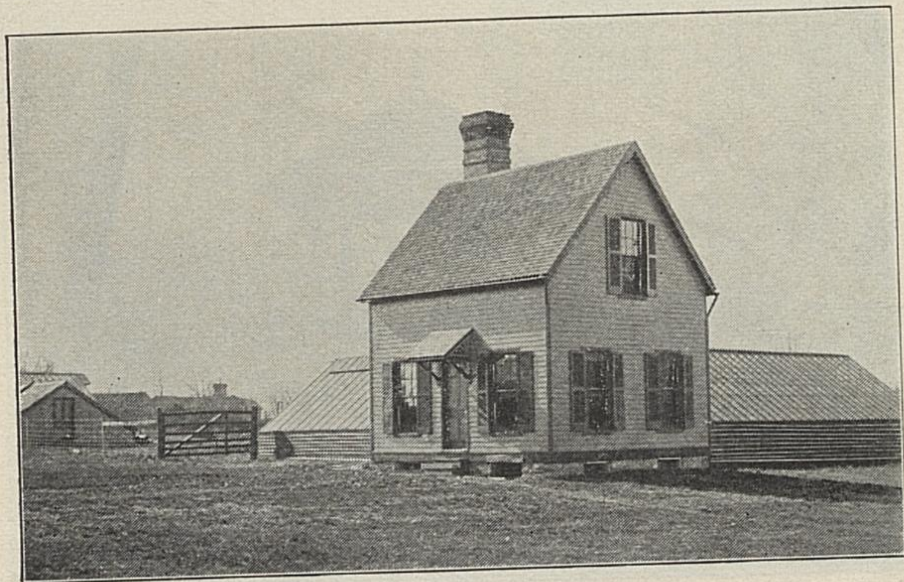
LECTURE ROOM — CHEMISTRY.



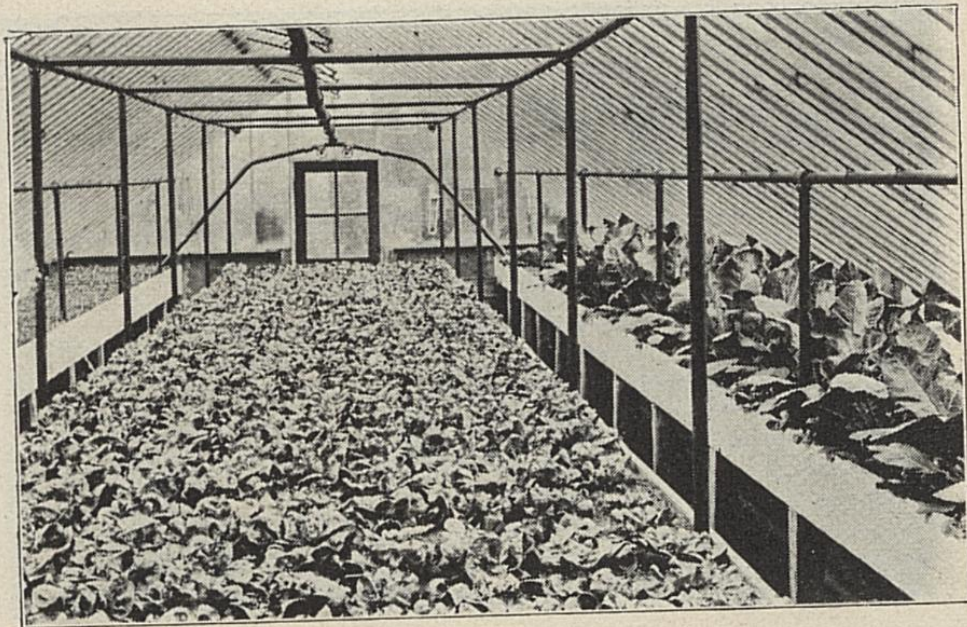
LABORATORY — CHEMISTRY.



INSECTARY — EXPERIMENT STATION.



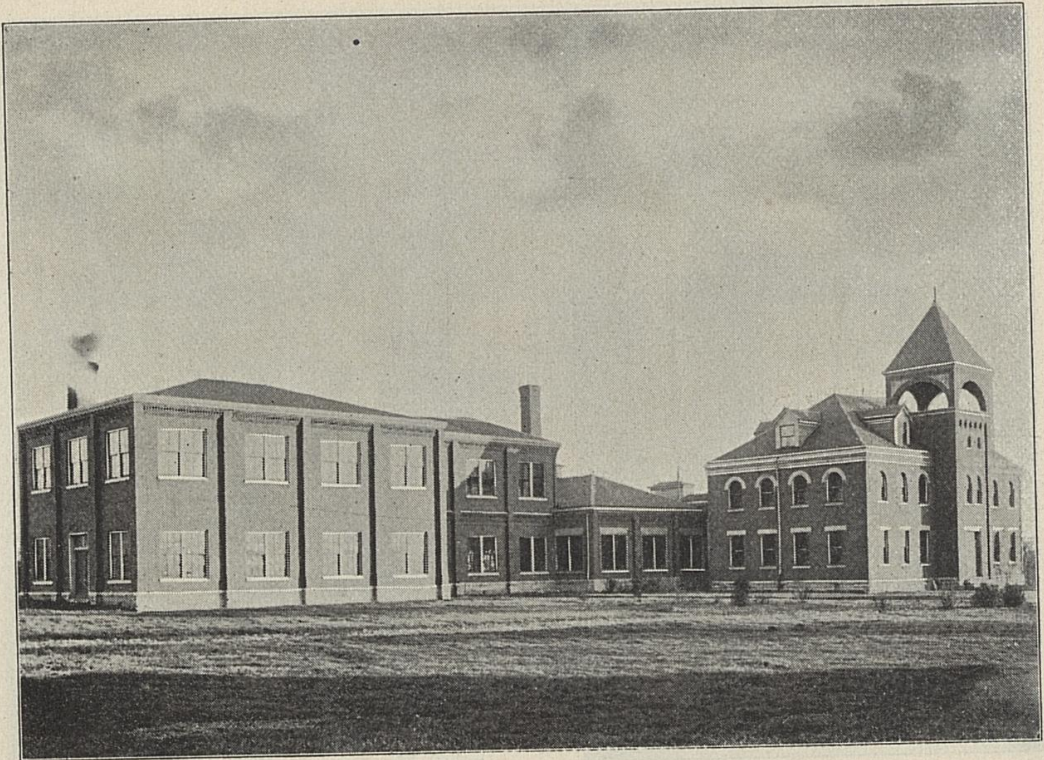
FORCING HOUSES — EXPERIMENT STATION.



EXPERIMENT CROP OF LETTUCE — FORCING HOUSE.



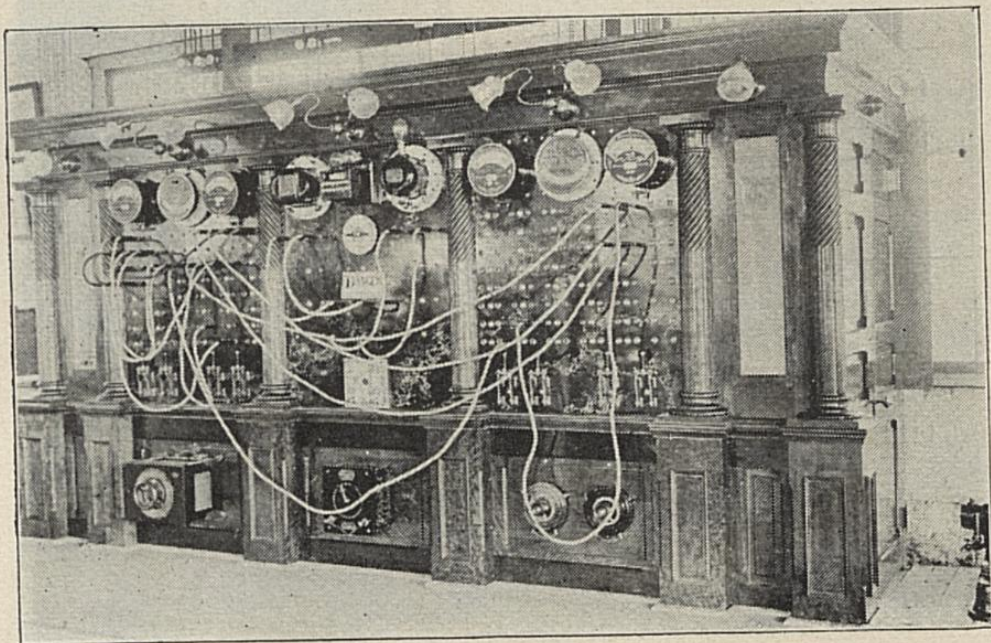
OLD MAXWELL SPRING — ENTRANCE TO ATHLETIC GROUNDS.



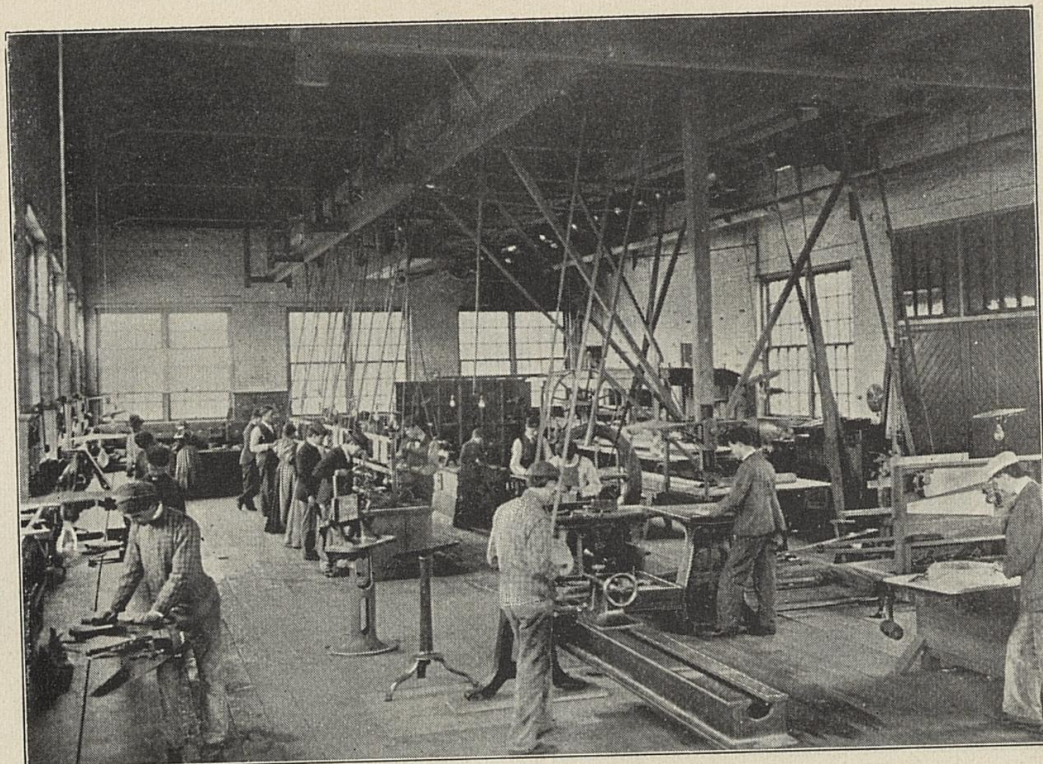
MECHANICAL HALL.



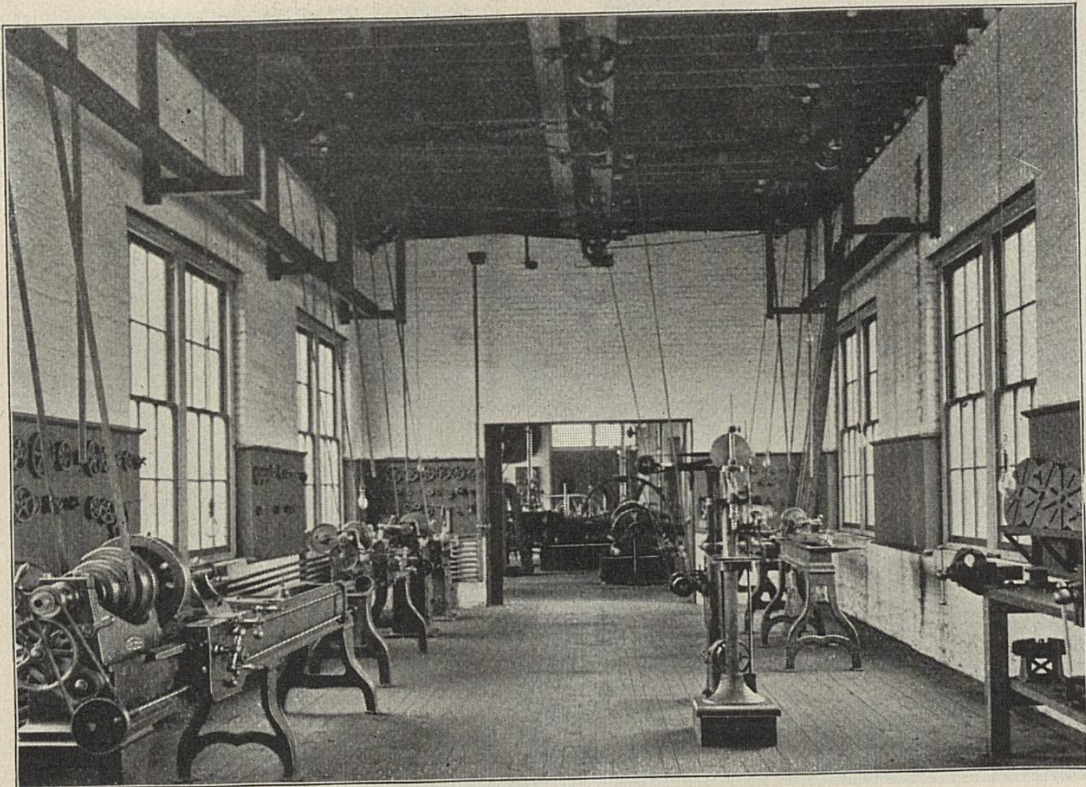
ENTRANCE TO MECHANICAL HALL.



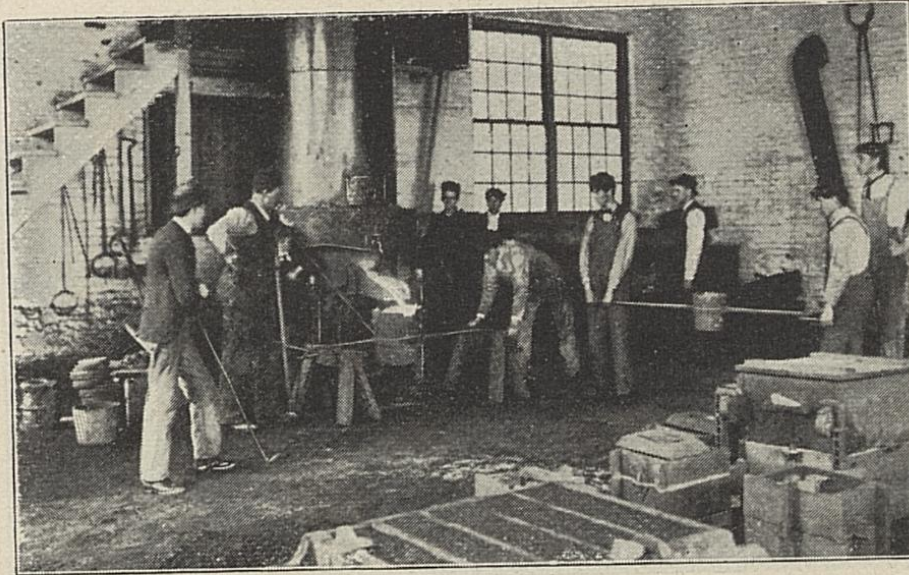
SWITCH BOARD — EXPERIMENTAL LABORATORY.



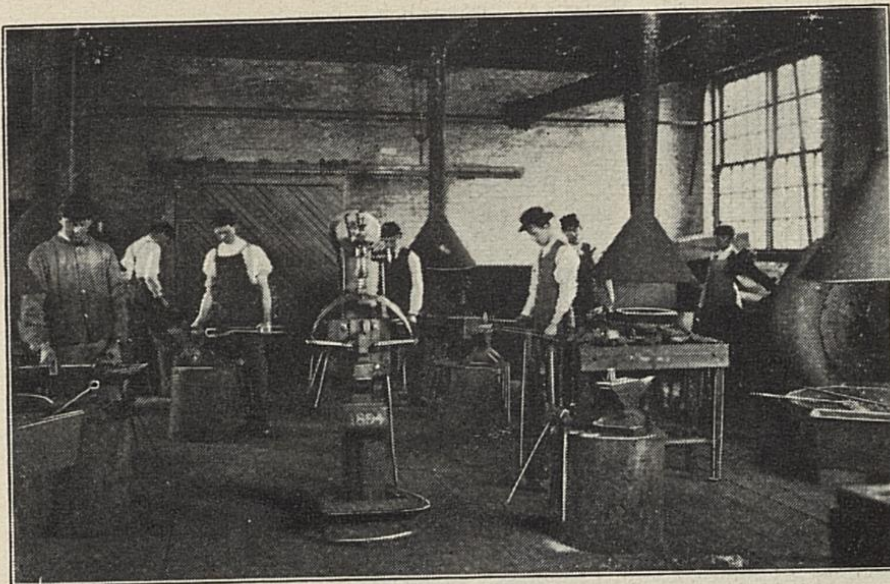
WOOD SHOP — MECHANICAL ENGINEERING.



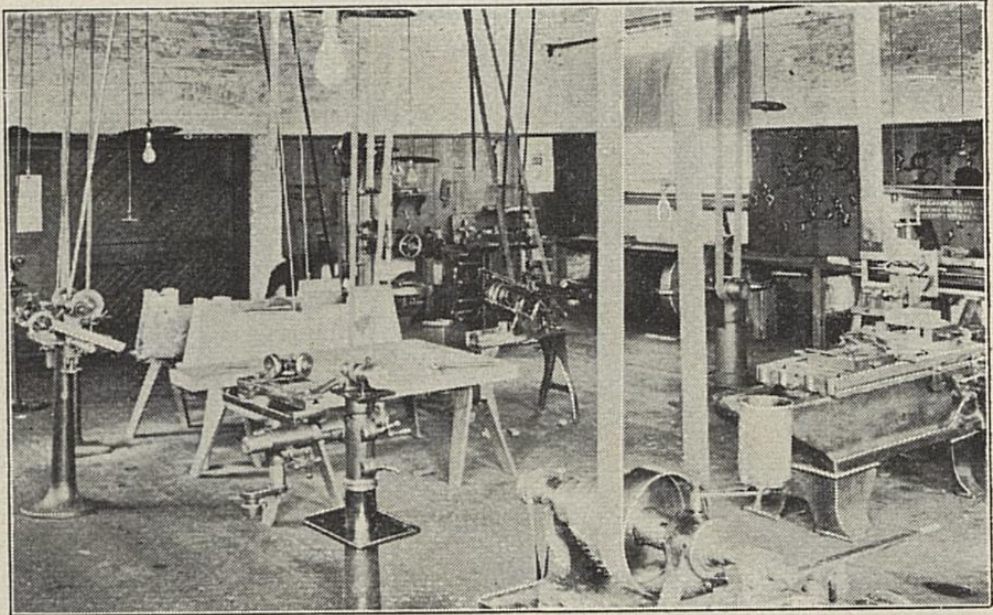
MACHINE SHOP ANNEX — MECHANICAL ENGINEERING



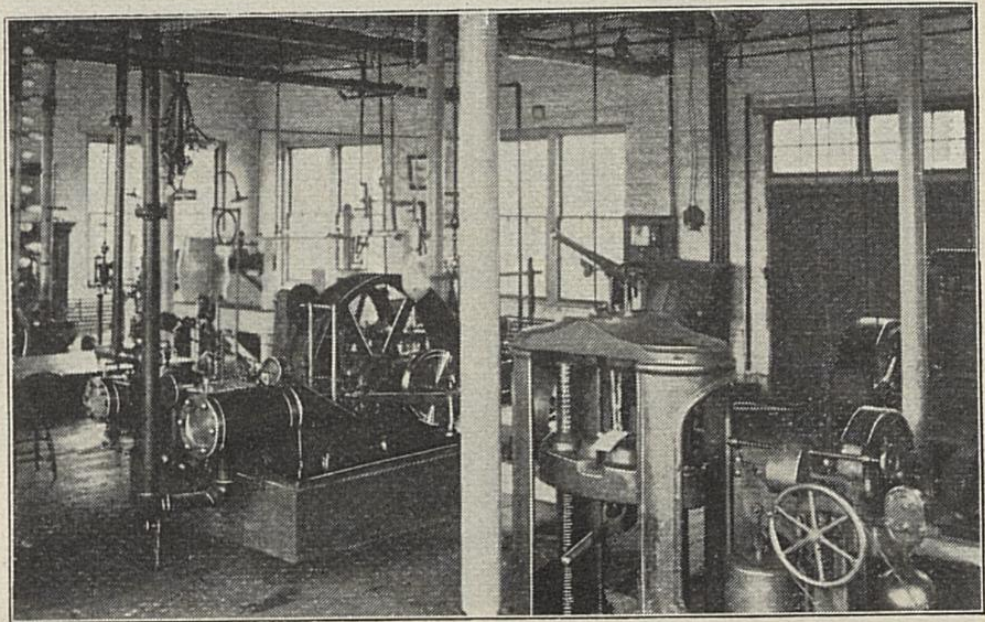
FOUNDRY — MECHANICAL ENGINEERING.



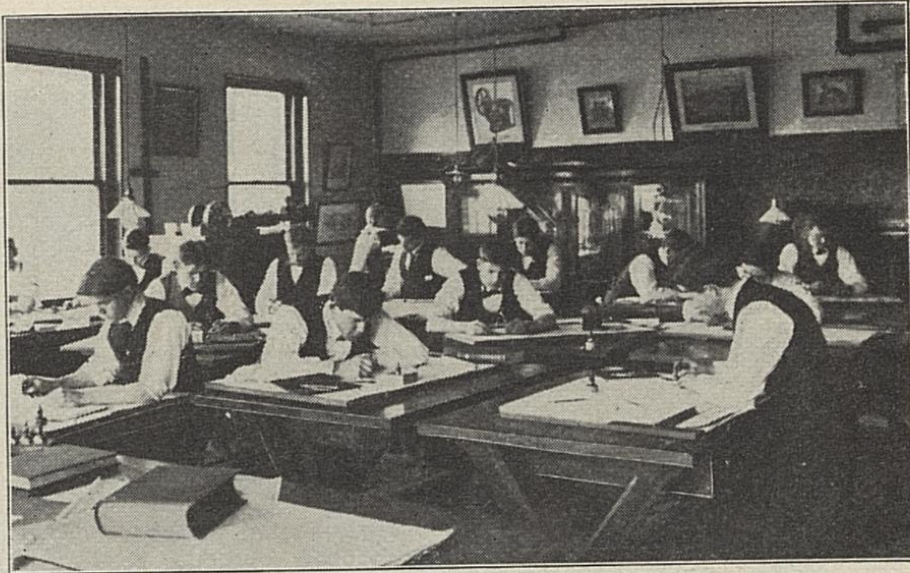
FORGE SHOP — MECHANICAL ENGINEERING.



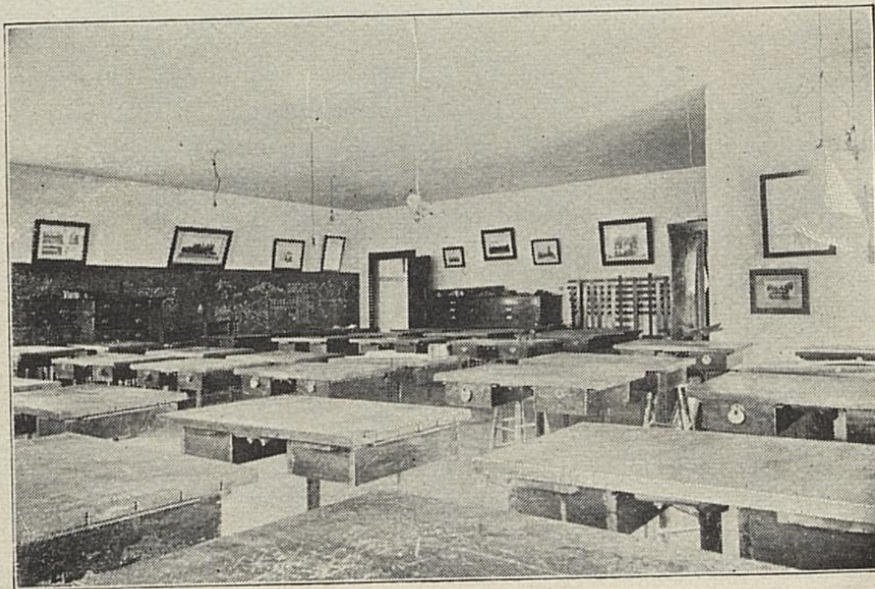
MACHINE SHOP — MECHANICAL ENGINEERING.



EXPERIMENTAL LABORATORY — MECHANICAL ENGINEERING.



SENIOR DRAWING ROOM—MECHANICAL ENGINEERING.



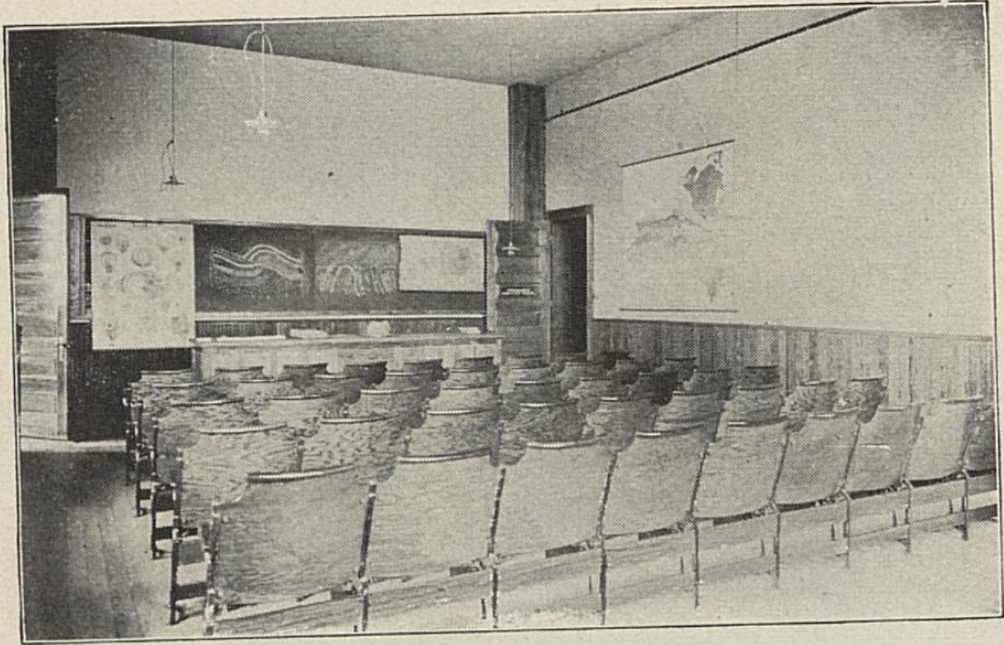
DRAWING ROOM—CIVIL ENGINEERING.



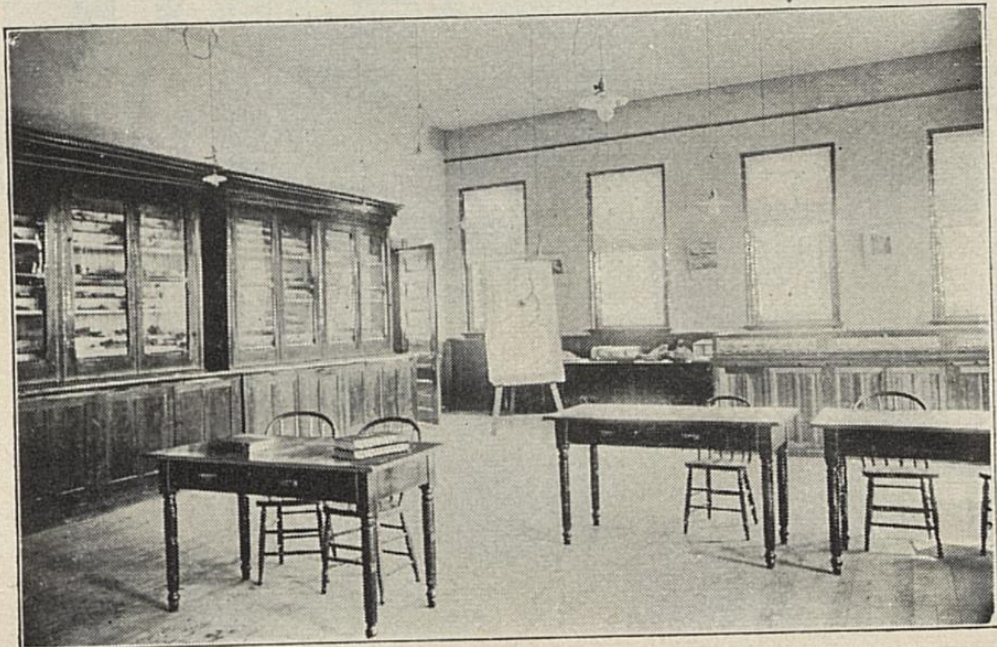
CLASS IN CIVIL ENGINEERING.



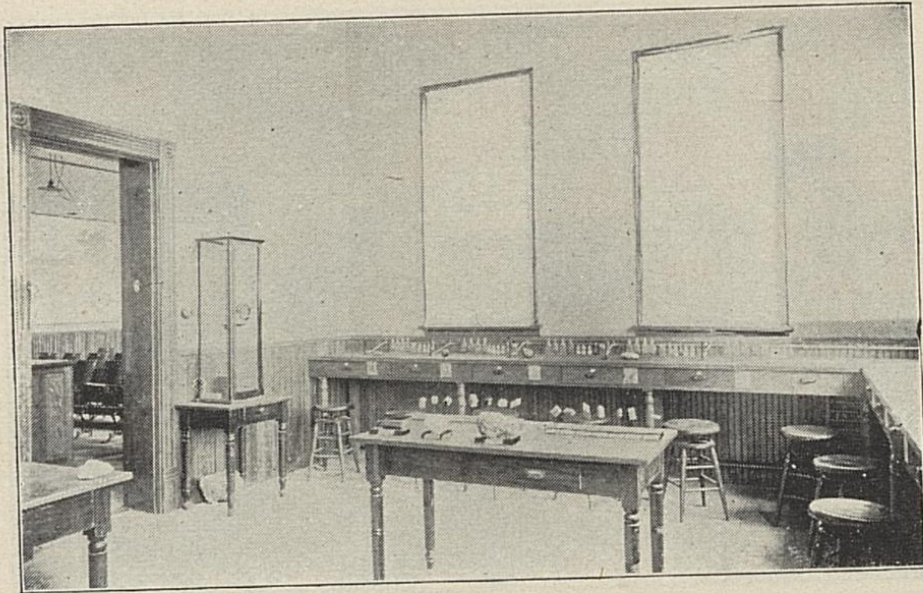
NATURAL SCIENCE BUILDING.



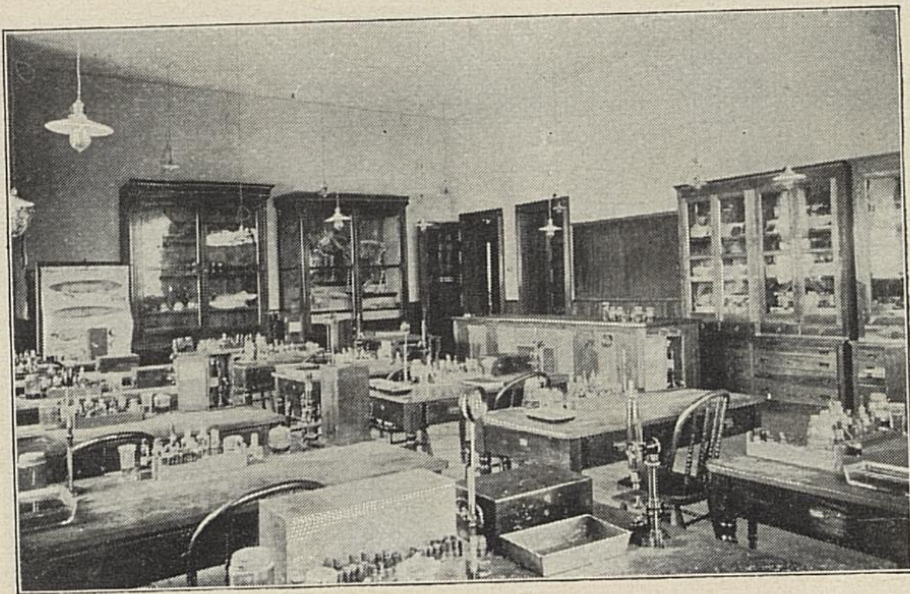
LECTURE ROOM — GEOLOGY.



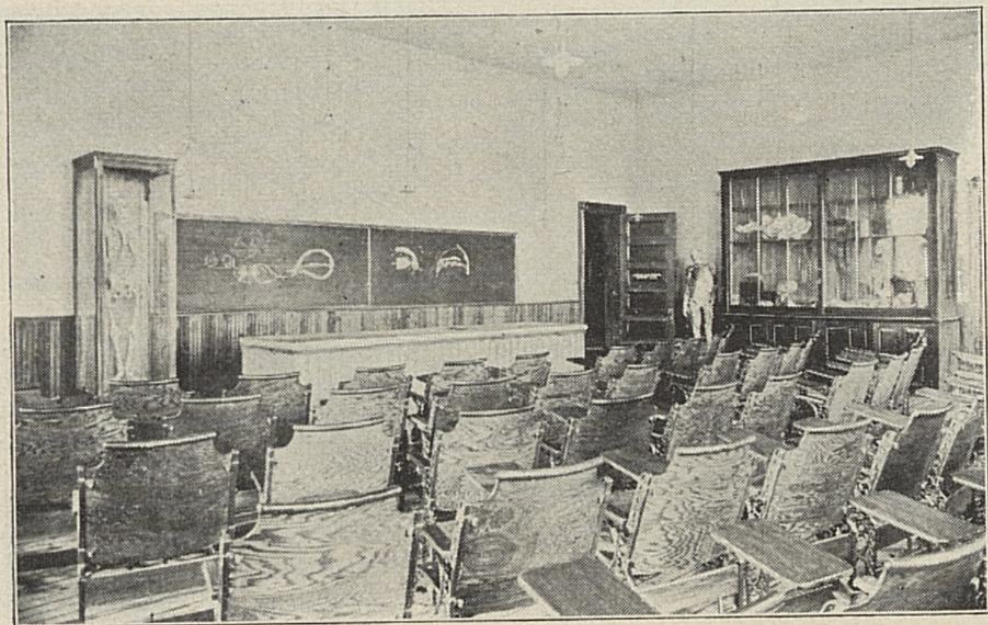
LABORATORY — GEOLOGY.



LABORATORY — MINERALOGY.



LABORATORY — ZOOLOGY.



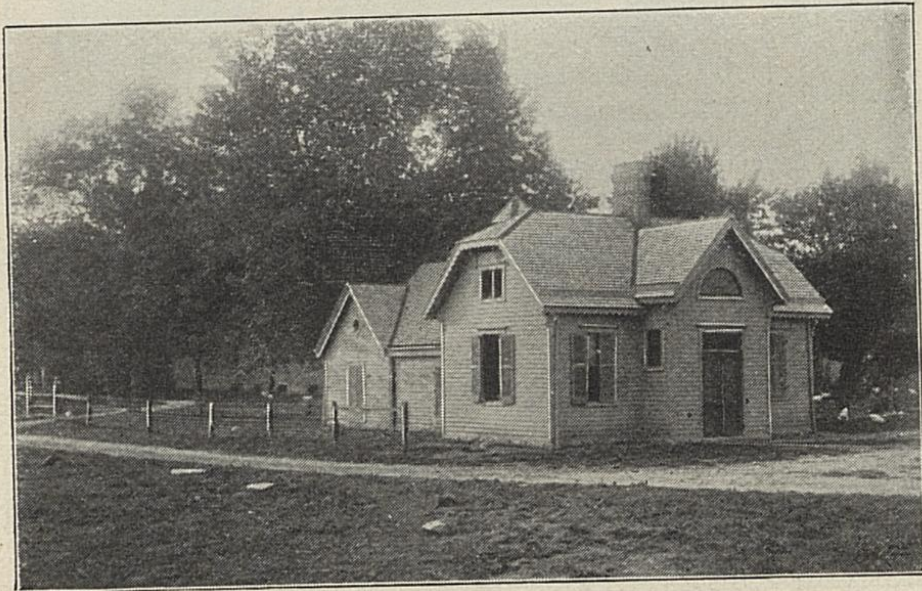
LECTURE ROOM — ANATOMY AND PHYSIOLOGY.



LABORATORY — BOTANY.



BARN — EXPERIMENT STATION FARM.



DAIRY BUILDING—EXPERIMENT STATION FARM.



GROUP OF YOUNG LADY STUDENTS.



FOOT-BALL TEAM, 1897.



FIELD DAY TEAM, 1898.



COLLEGE CAMPUS FROM THE LAKE.

County Appointees.

Each County, or where there is more than one Legislative District in a county, each Legislative District, is entitled to send to the State College each year **five** properly-prepared students—one to the College (including the Academy), and four to the Normal School. The former appointment, tenable for the number of years necessary to complete the course in which the student matriculates; and the latter tenable each for one year, entitle the beneficiaries to *free tuition, free room-rent, fuel, and lights, and free traveling expenses*. All appointments are made by the County Superintendents, on competitive examinations, held each year, between June 1 and August 1 (Academic and Collegiate appointment), and July 1 and December 31 (Normal appointment).

Entrance Examinations

For the Session 1898-9, will be held immediately following Commencement, in June, and on September 5, 6, and 7. All students, excepting those with certificates from "Accredited schools" (a list of which appears in the catalogue), are examined for classification when they present themselves for admission to the Academy, Normal School, or any of the courses of study in the College proper.

Expenses. The necessary expenses for the entire collegiate year need not exceed, for a county appointee, \$125.00; for any other student, not an appointee, \$200.00.

The next Session opens Thursday, September 8, 1898.
Write for information or catalogue to

JAS. K. PATTERSON, President,
STATE COLLEGE OF KENTUCKY,
LEXINGTON, KY.

University Archives
Margaret I. King Library - North
University of Kentucky
Lexington, Kentucky 40506