

Population 10,000

Prevailing Winds, N. and N.W.

WATER FACILITIES

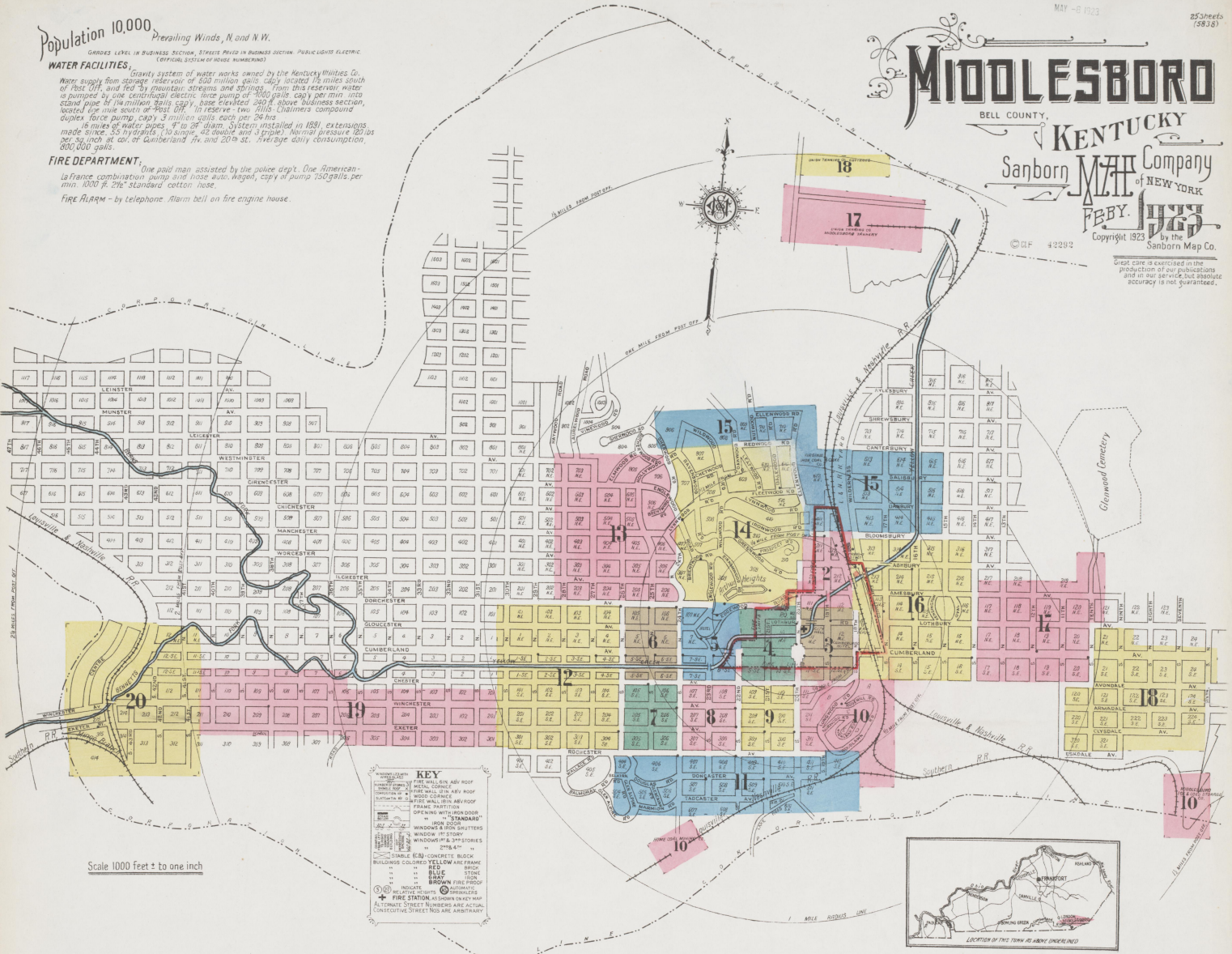
Gravity system of water works owned by the Kentucky Utilities Co. Water supply from storage reservoir of 500 million gallons capacity located 1 1/2 miles south of Post Office...

FIRE DEPARTMENT

One paid man assisted by the police dept. One American-LaFrance combination pump and hose auto. wagon, capacity of pump 750 gallons per min. 1000 ft. 2 1/2" standard section hose.

FIRE ALARM - by telephone. Alarm bell on fire engine house.

MIDDLESBORO BELL COUNTY, KENTUCKY Sanborn Map Company of NEW YORK FEBY. 1923 Copyright 1923 by the Sanborn Map Co.

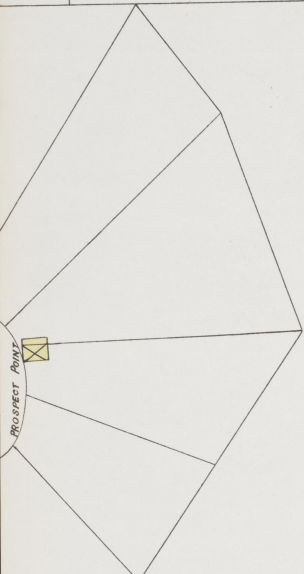


INDEX

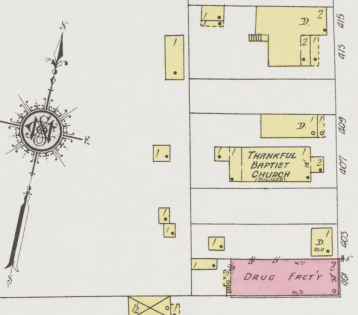
Table with columns for STREET, SHEET, and cross-street. Lists streets such as Amesbury Ave., Dorchester Ave., and others, along with their corresponding sheet numbers and intersecting streets.

* Indicates only one side of Street shown.

20'
20'
20'

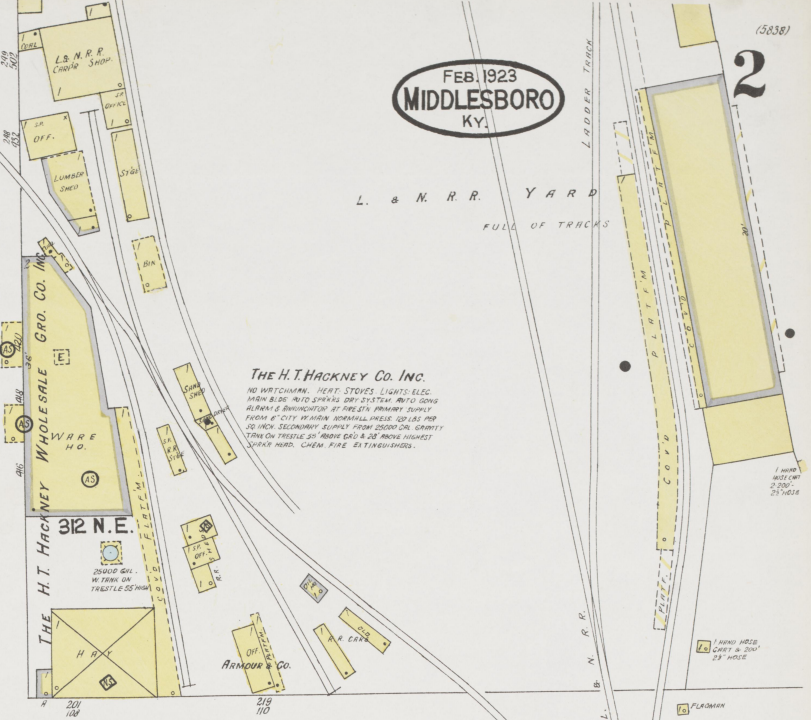


311 N.E.



15

80' S.W. PIPE BLOOMSBURY AV. 120'



FEB. 1923
MIDDLESBORO
KY.

L. & N. R. R. YARD
FULL OF TRACKS

(5638)
2

14

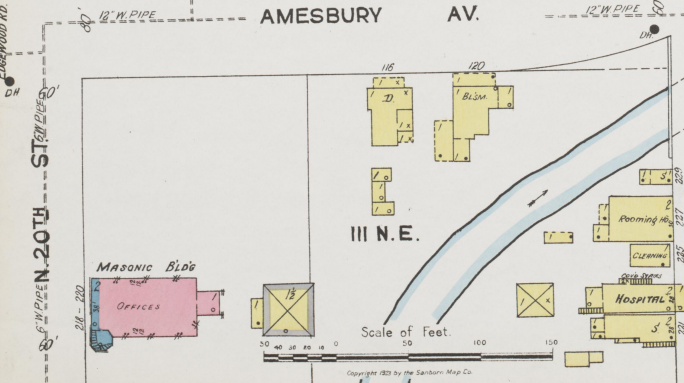
ST. N. 20TH



ST. N. 19TH



16

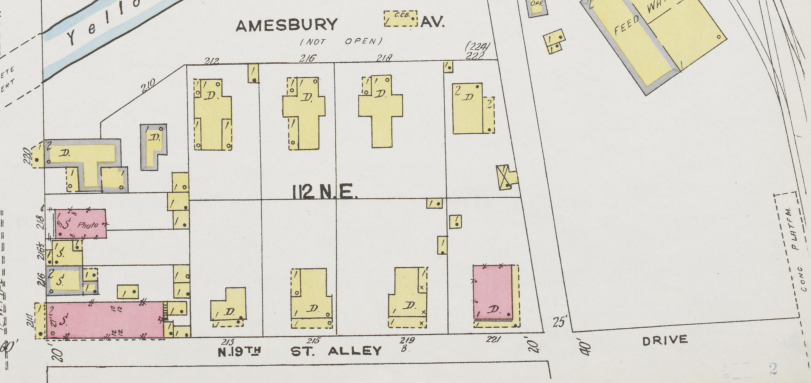


AMESBURY AV.

III N.E.

Scale of Feet.

3



AMESBURY AV.

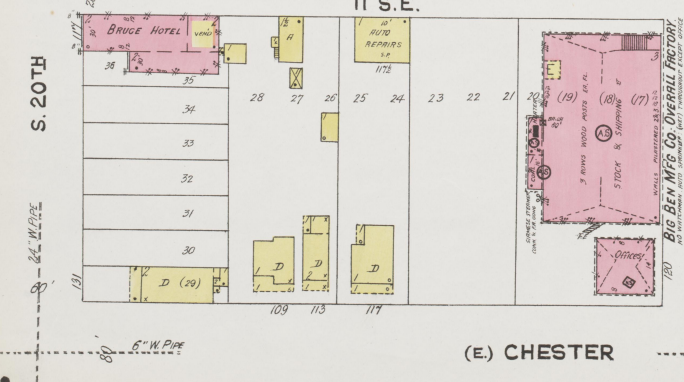
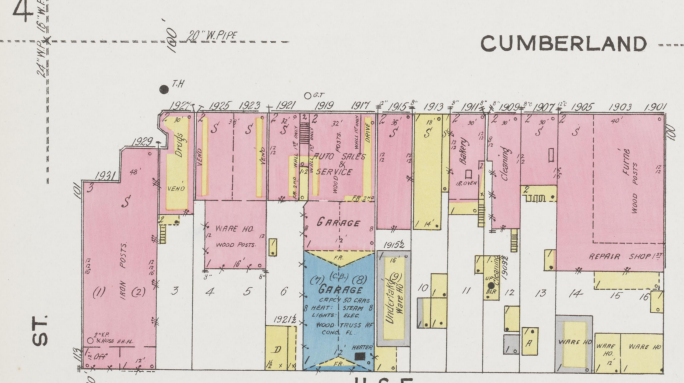
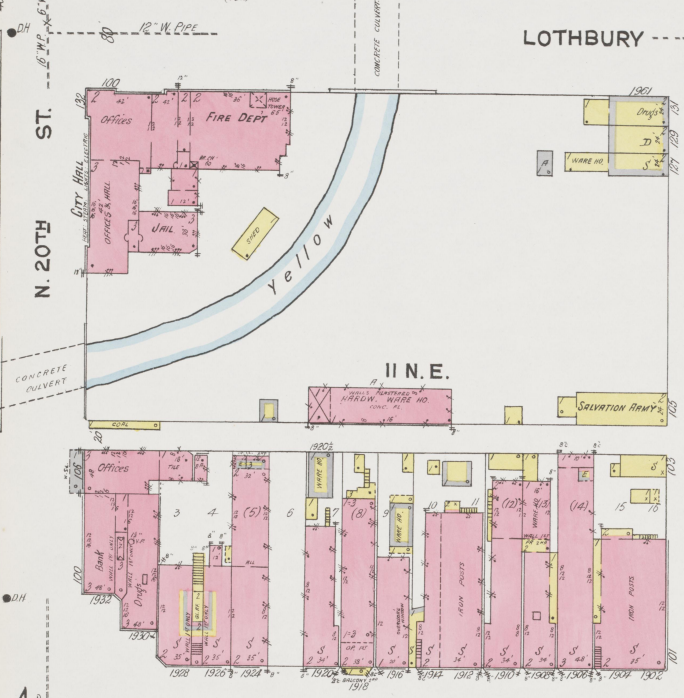
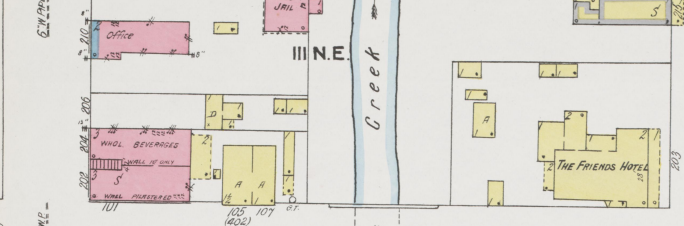
112 N.E.

N. 18TH ST. ALLEY

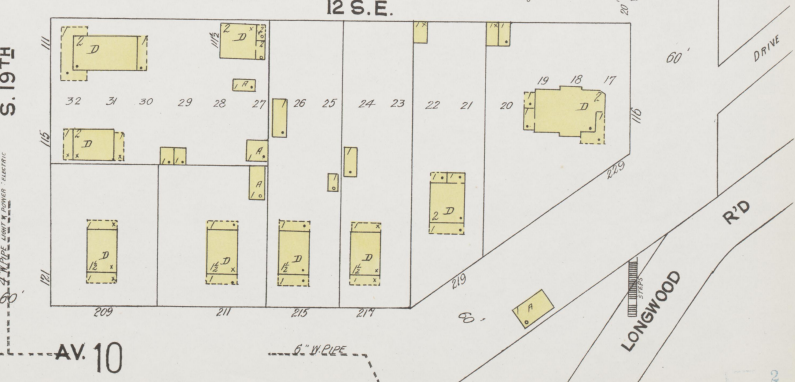
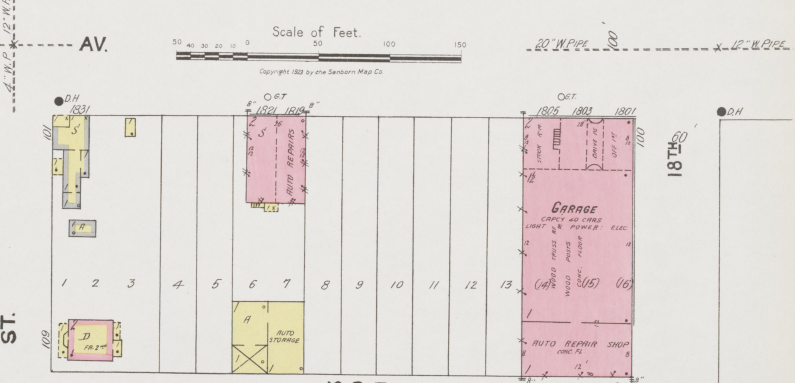
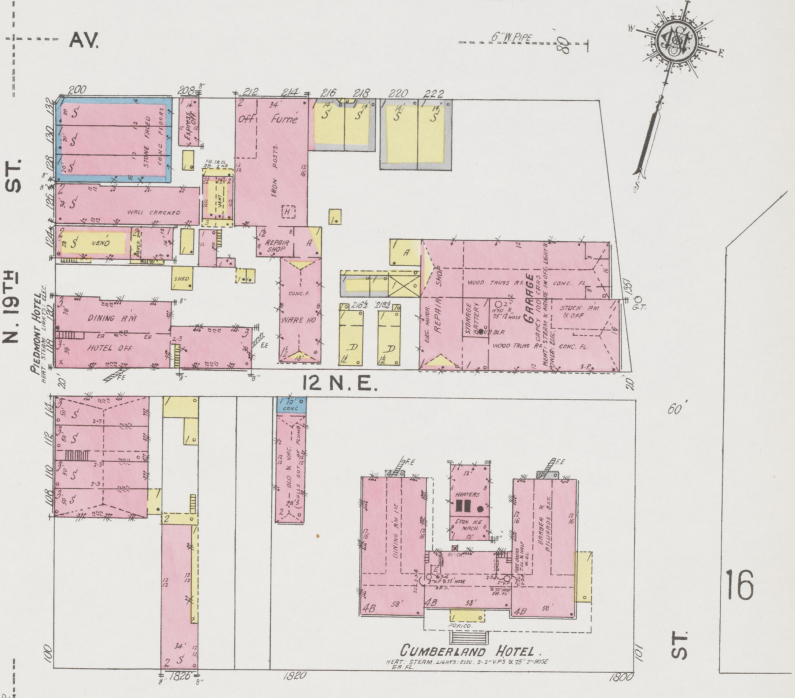
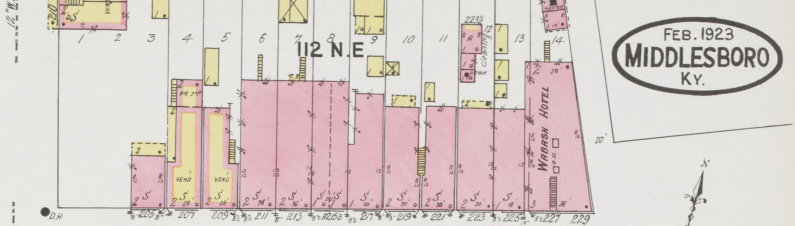
DRIVE

Copyright 1923 by the Sanborn Map Co.

3



2



FEB. 1923
MIDDLESBORO
KY.

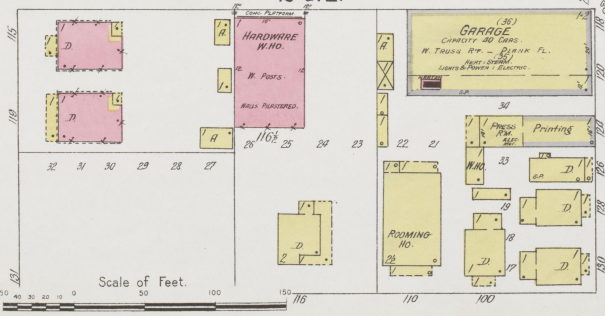
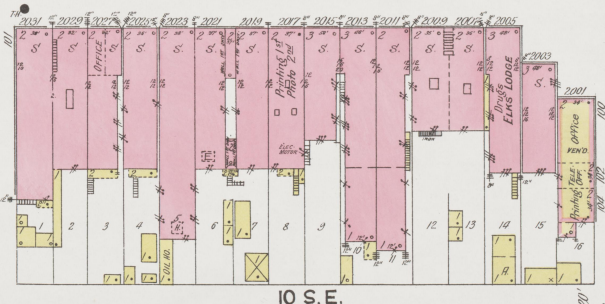
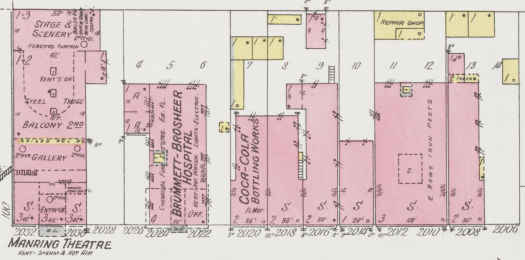
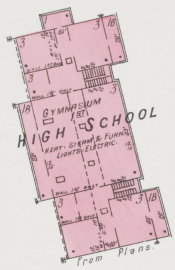
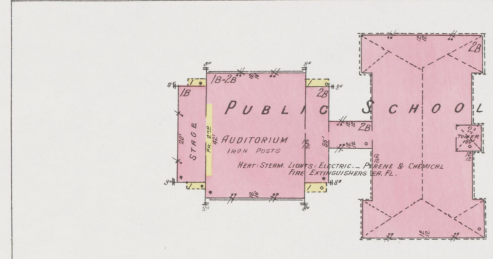


16

2



FEB. 1923
MIDDLESBORO
KY.



Scale of Feet.

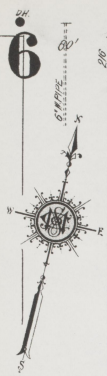
(W) CHESTER AV.

Copyright 1923 by the Sanborn Map Co.

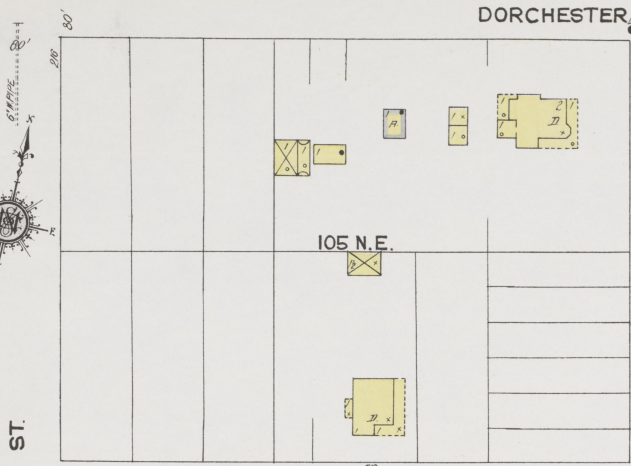
FEB. 1923
MIDDLESBORO
KY.



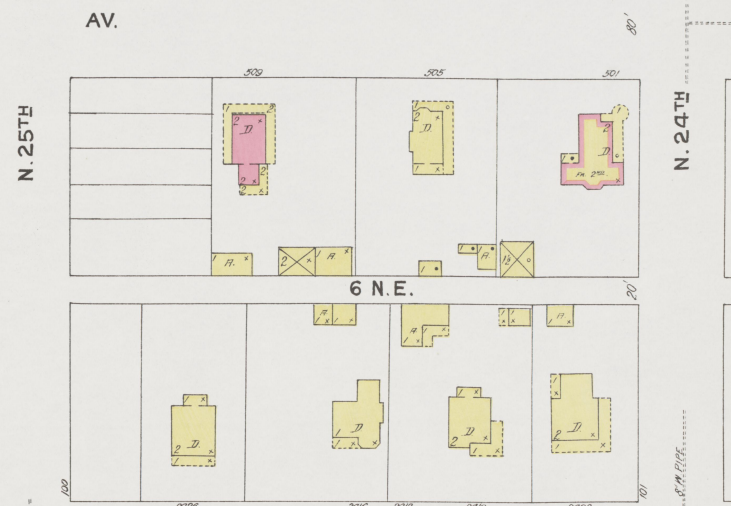
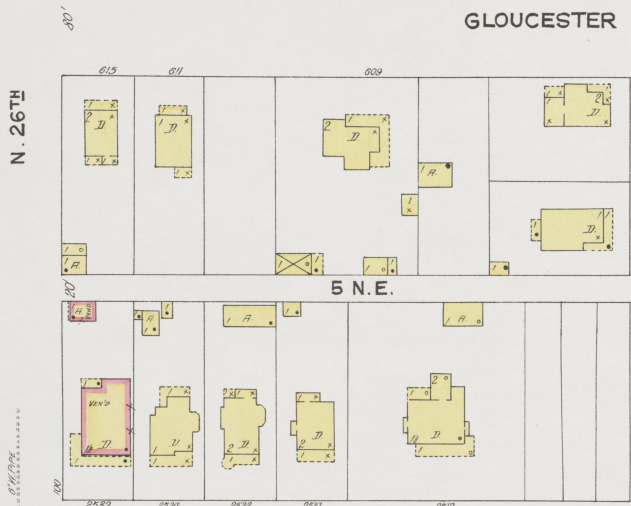
Scale of Feet.
0 50 100 150 200
Copyright 1923 by the Seaborn Map Co.



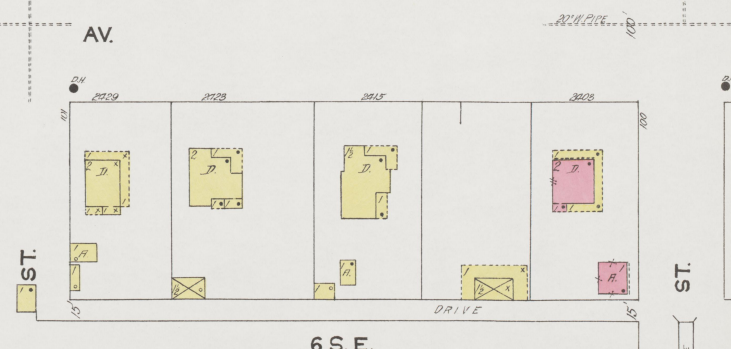
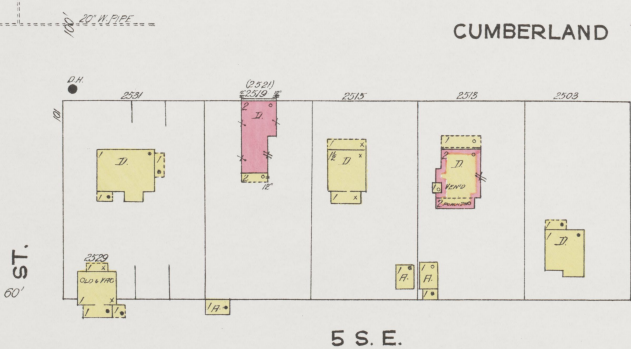
6



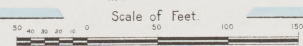
6



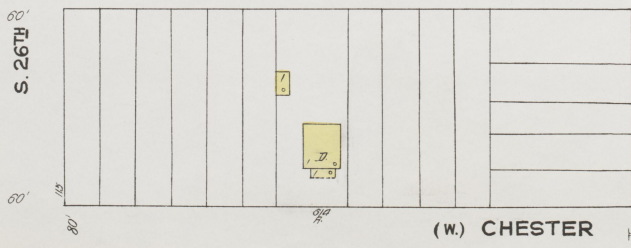
12



Yellow Creek



Copyright 1922 by the Sandborn Map Co.



NOT OPEN

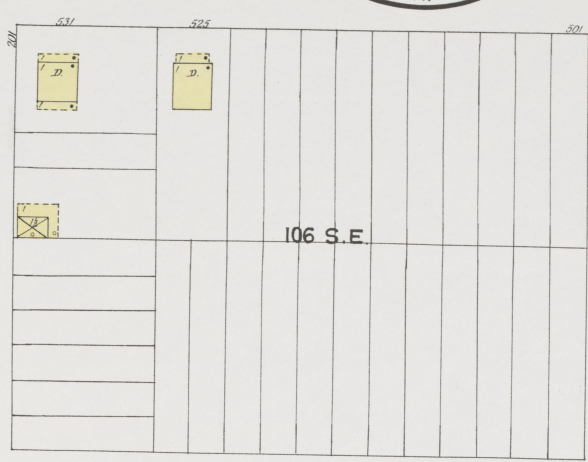
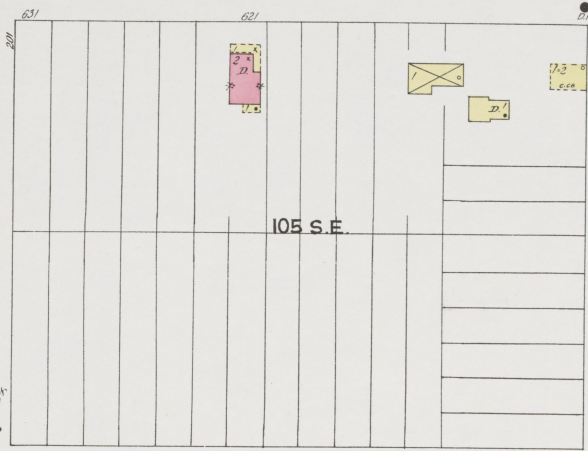
7

(W.) CHESTER AV.

FEB. 1923
MIDDLESBORO
KY.

(5953)

7



WINCHESTER AV.

AV.



S. 26TH ST.

12



S. 25TH ST.

11

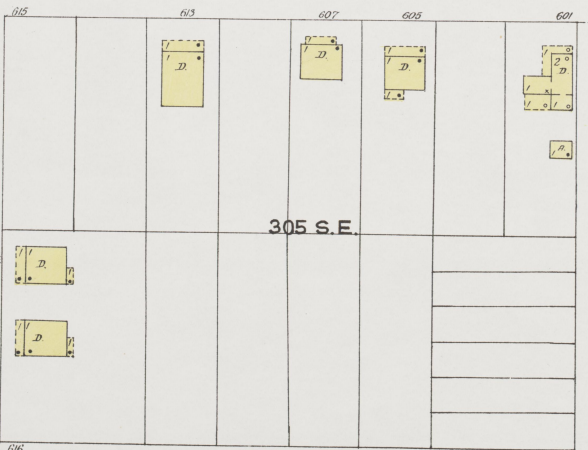


S. 24TH ST.

10

EXETER AV.

AV.

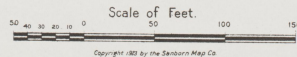


NOT OPEN



ROCHESTER AV.

AV.



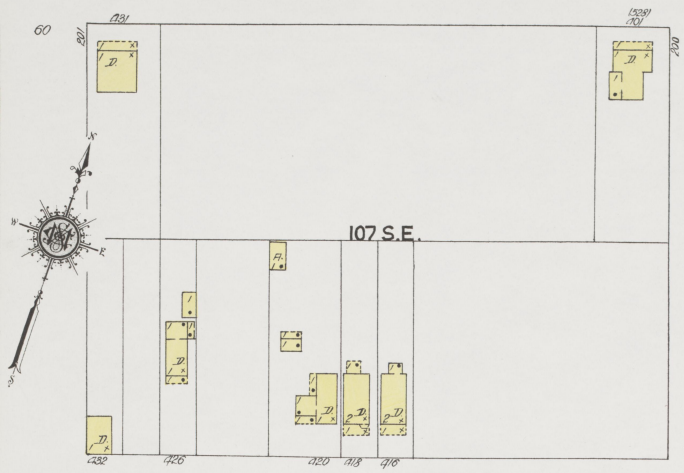
11

2

8

5

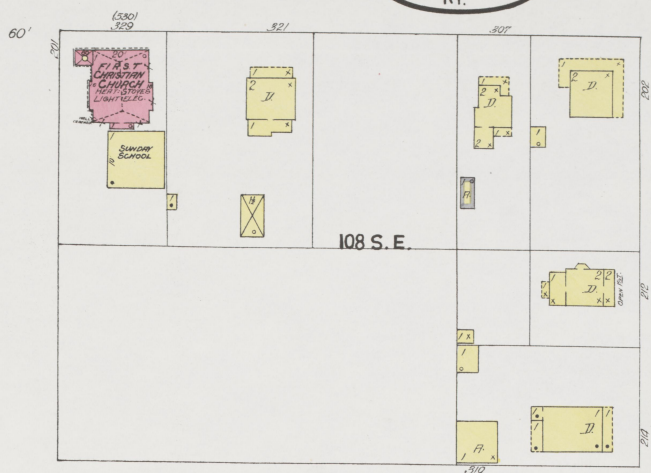
(W) CHESTER



FEB. 1923
MIDDLESBORO
KY.

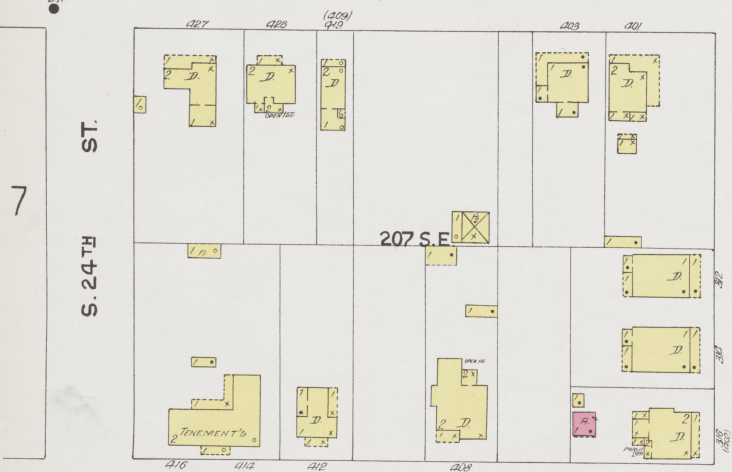
8

AV.



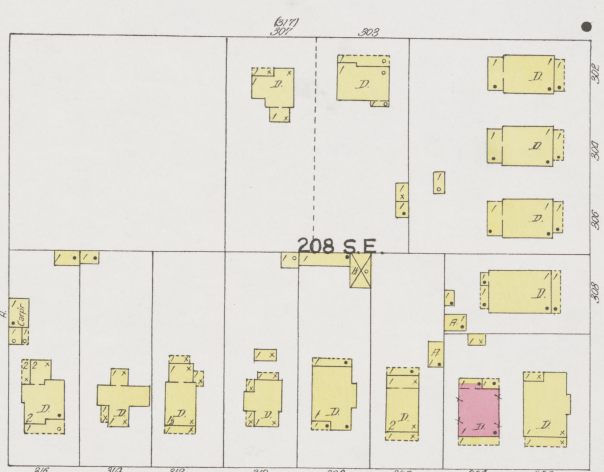
WINCHESTER

AV.



ST.

S. 23RD

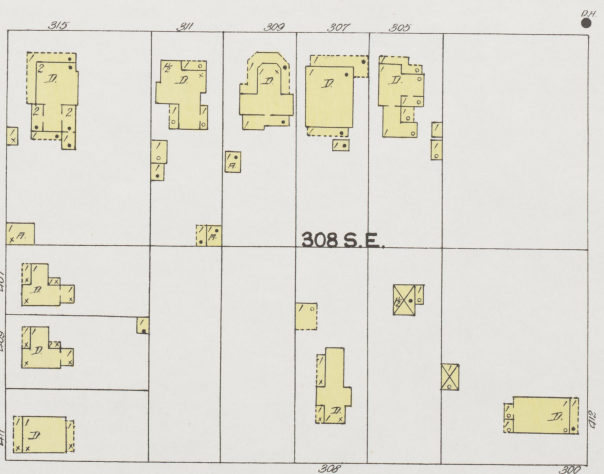
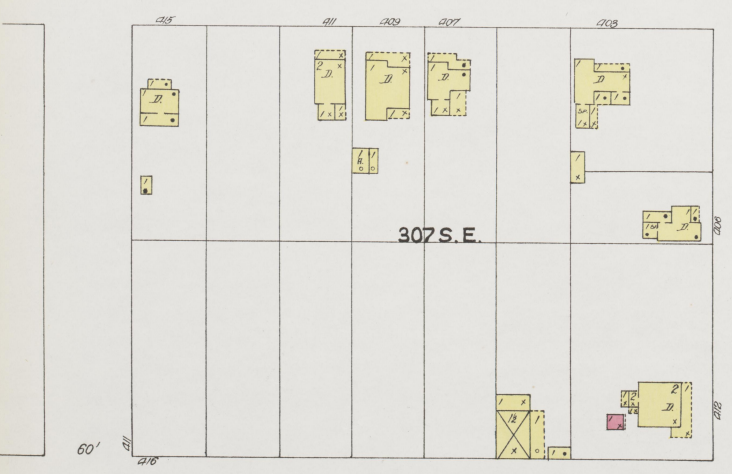


ST.

S. 22ND

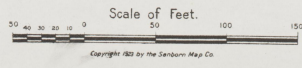
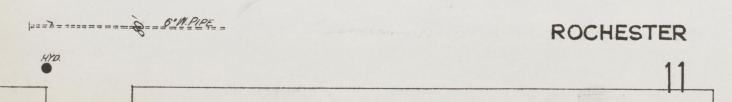
EXETER

AV.



ROCHESTER

AV.



11

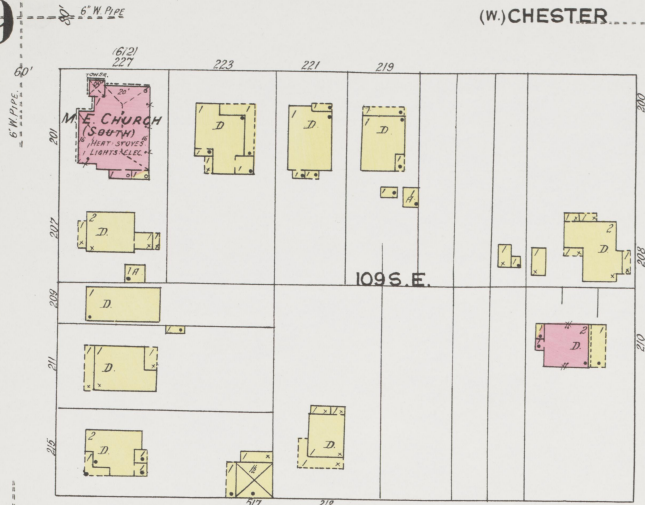
9

9

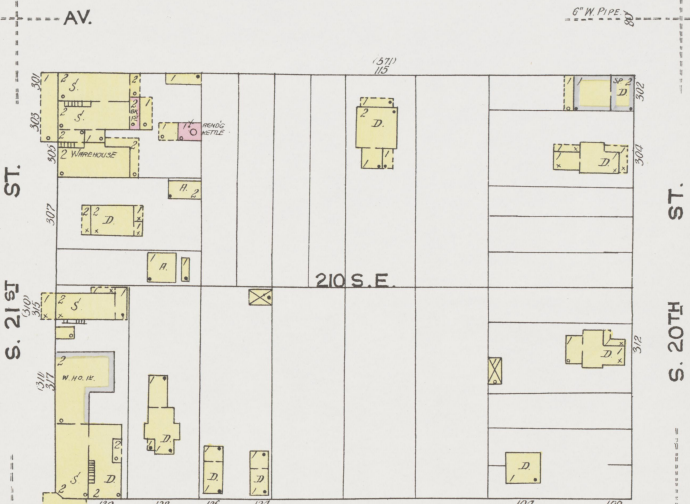
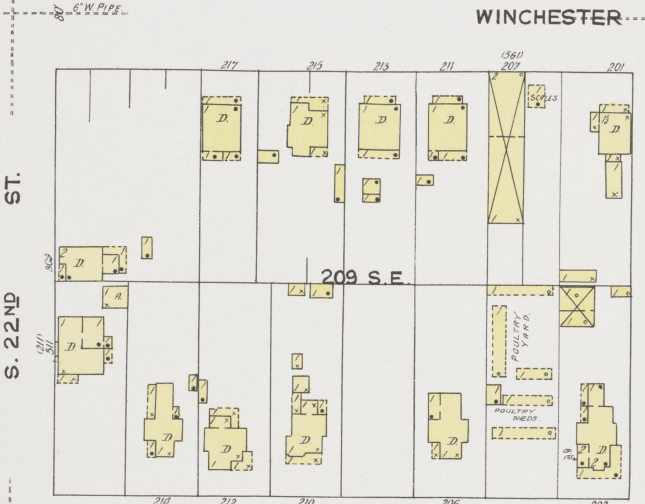
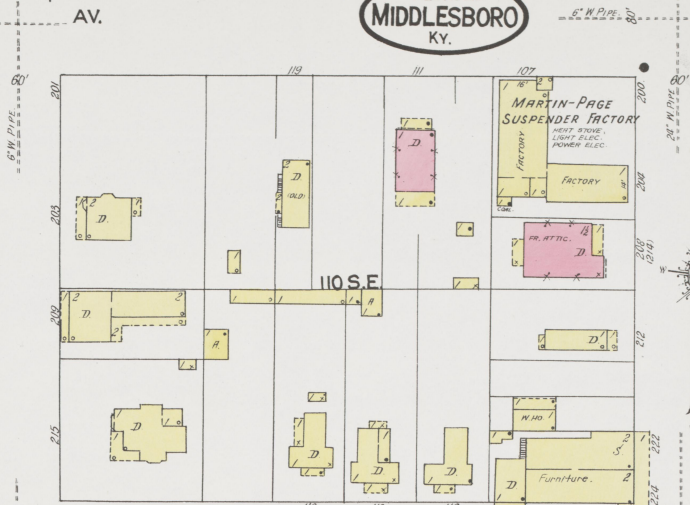
(W)CHESTER AV.

FEB. 1923
MIDDLESBORO
KY.

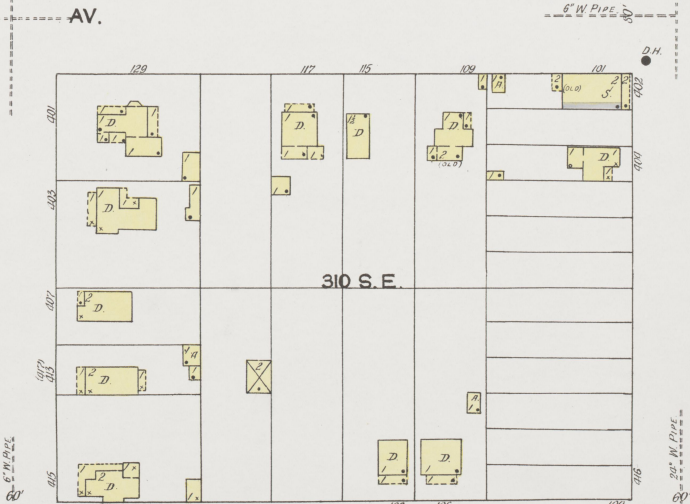
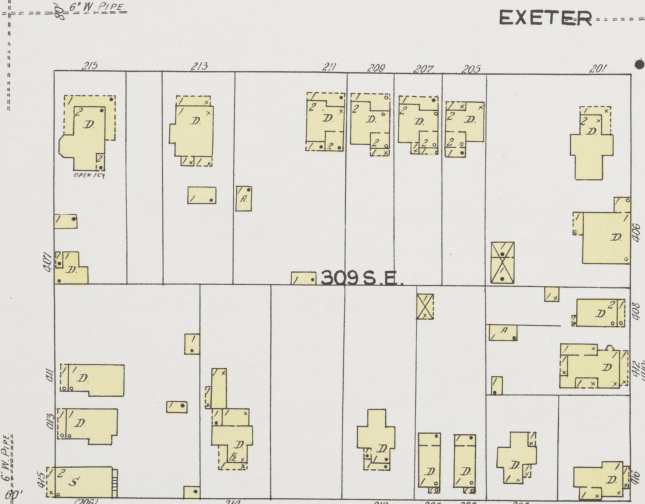
9



4

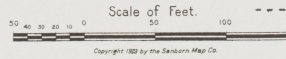


EXETER AV.



ROCHESTER AV.

ROCHESTER AV.



N O E X P O S U R E

(4338)



10

FEB. 1923

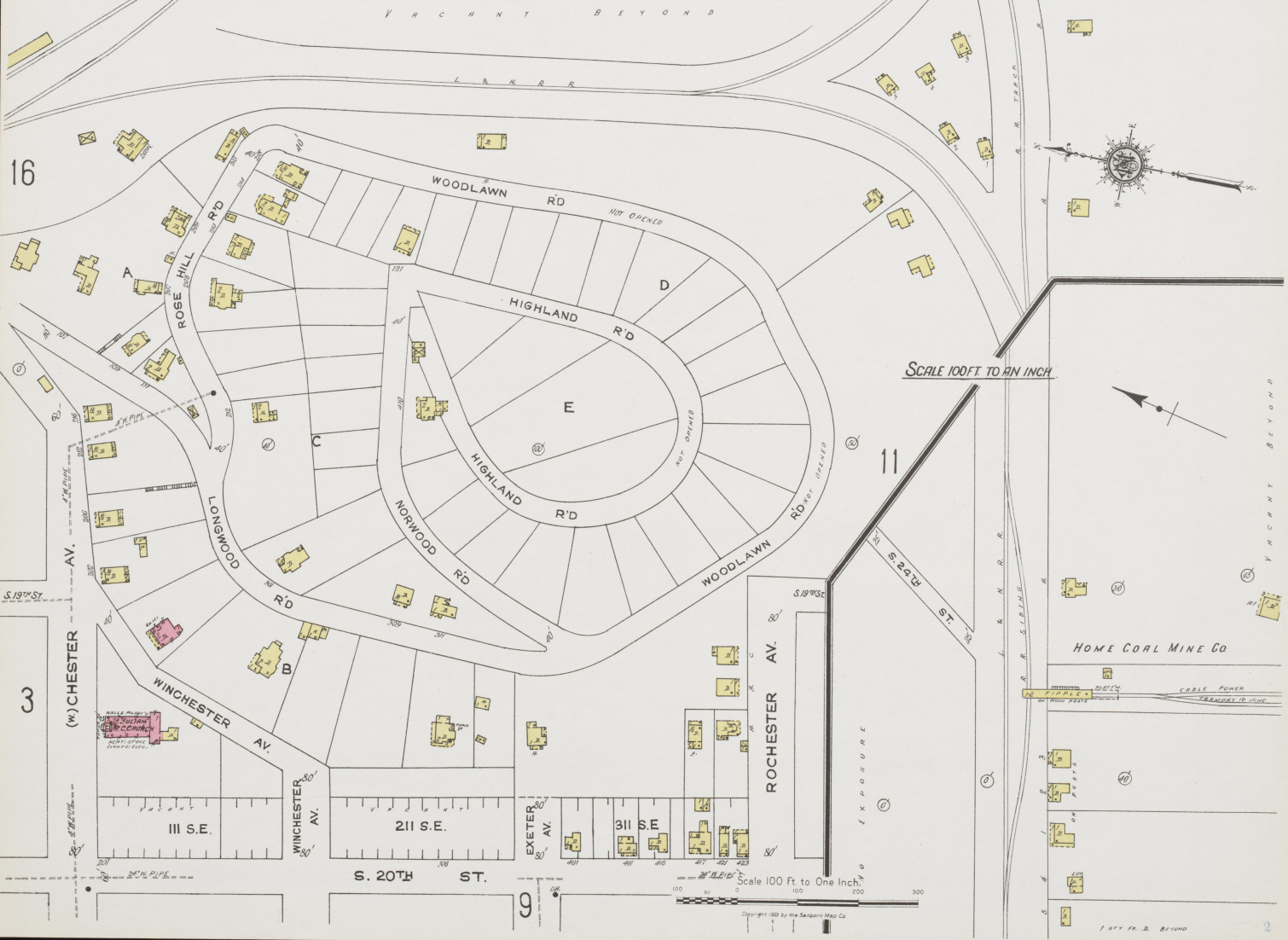
MIDDLESBORO KY.

E. B. McFARLAND
(ABANDONED)
MACHINERY REMOVED



Located 2 Miles E. of Fire Dept. Ho.

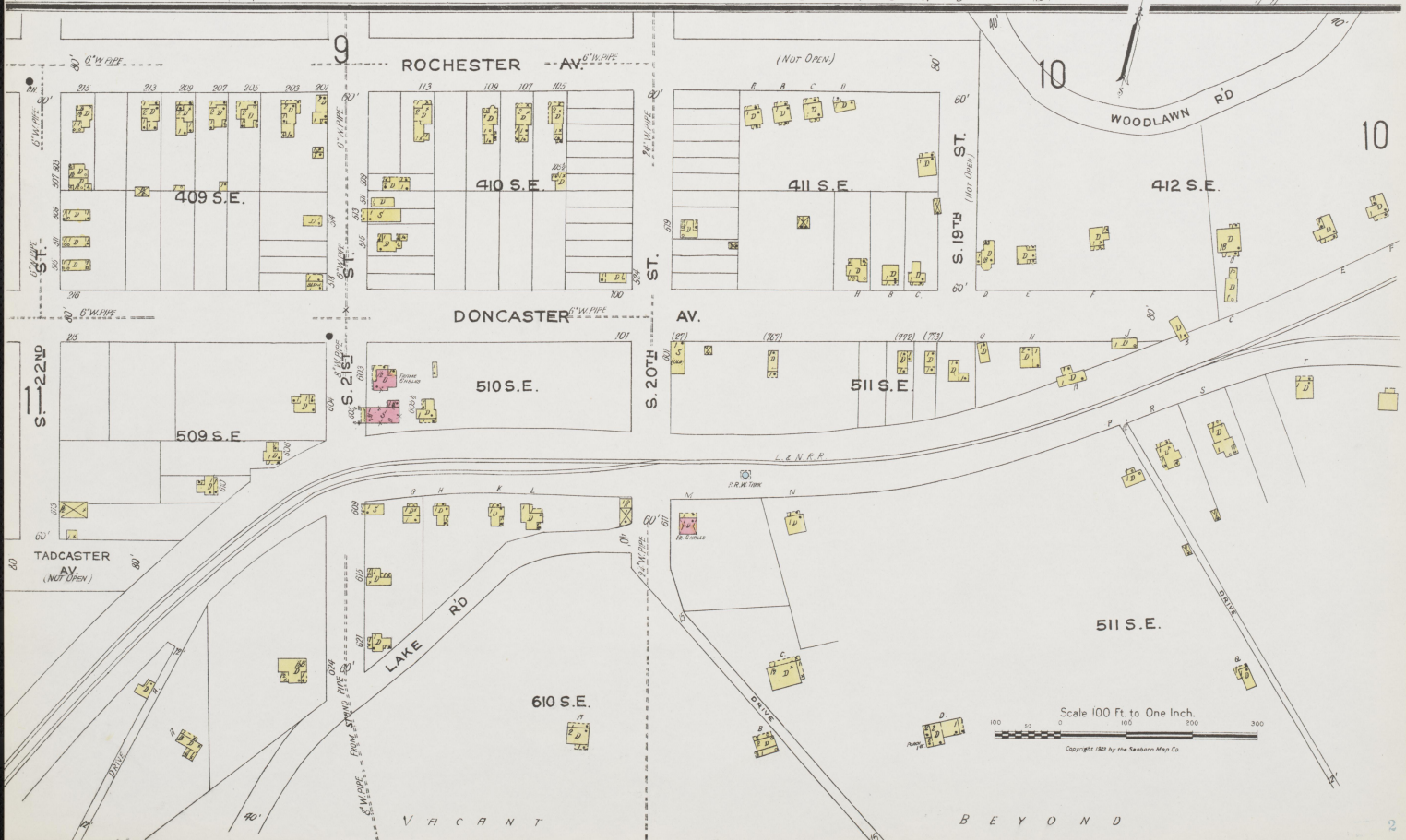
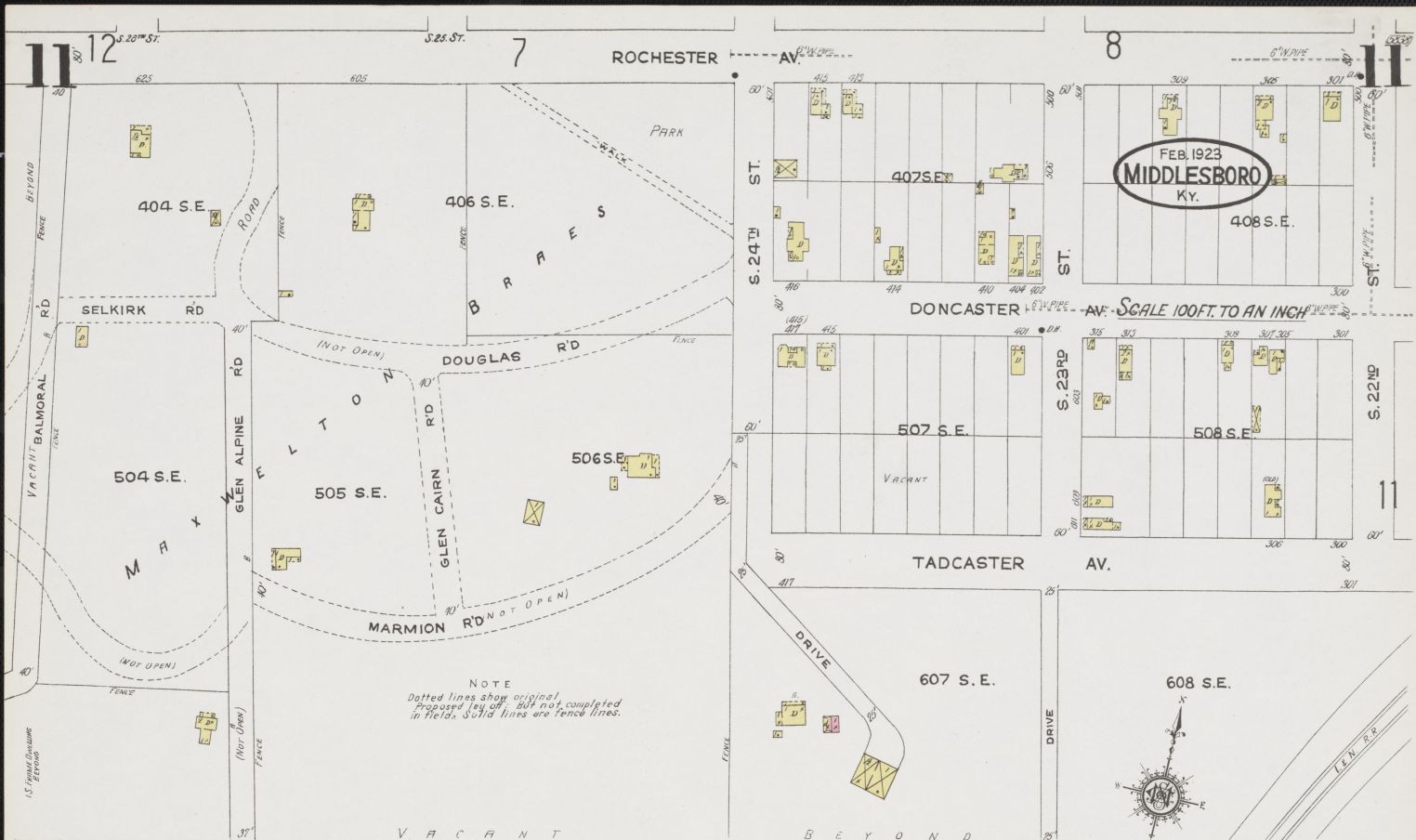
V A C A N T B E Y O N D

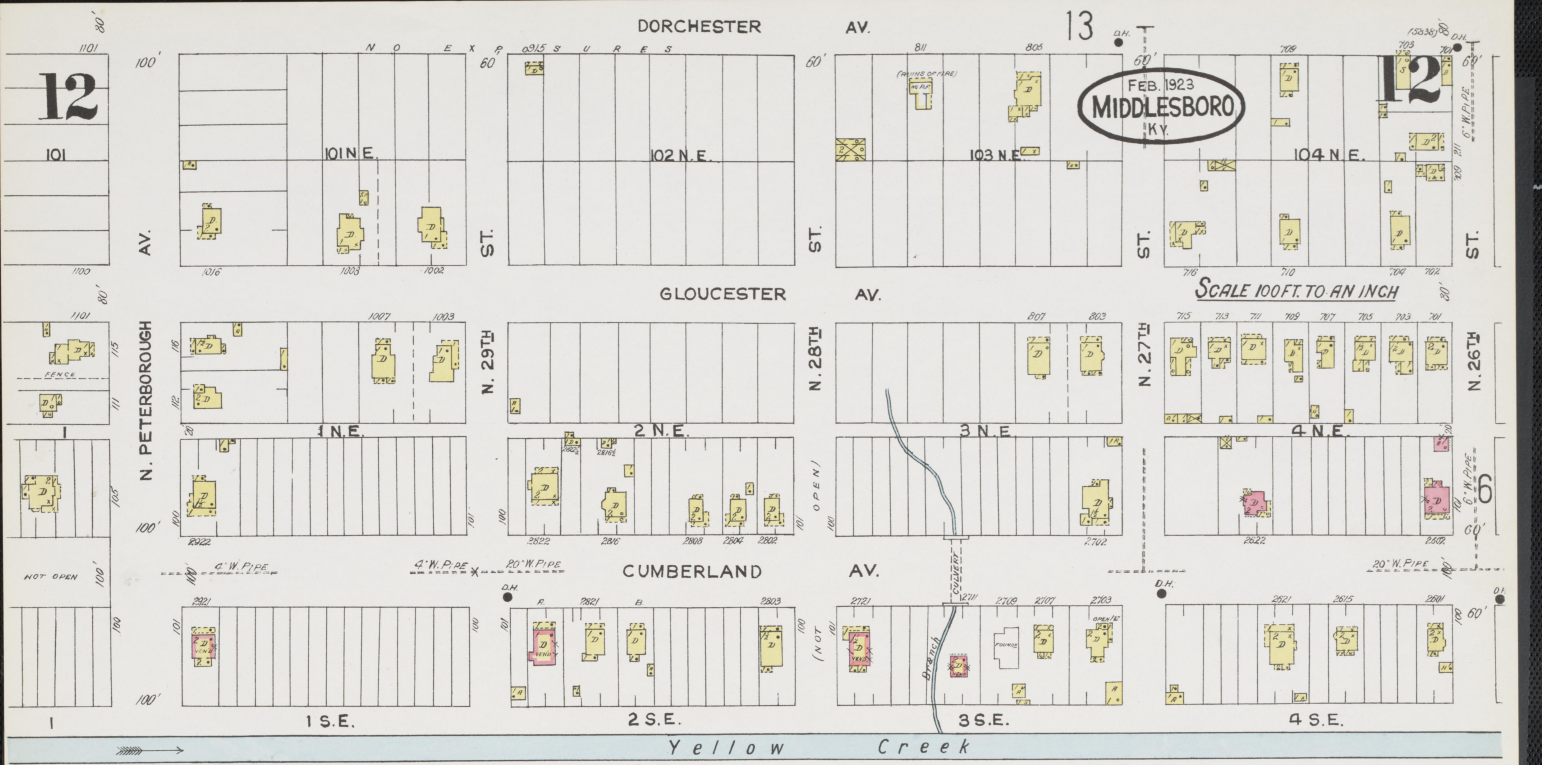


SCALE 100 FT. TO AN INCH

Scale 100 Ft. to One Inch

Copyright 1923 by the Sanborn Map Co





13

13

FEB. 1923
MIDDLESBORO
KY.

SCALE 100 FT. TO AN INCH



902

904

WESTMINSTER AV.

702 N.E.

703 N.E.

804

805

HOLLYWOOD RD

706

CIRENCESTER AV.

AV.

602 N.E.

603 N.E.

604 N.E.

605 N.E.

ENGLEWOOD RD

CHICHESTER AV. (NOT OPEN)

AV. (NOT OPEN)

502 N.E.

503 N.E.

504 N.E.

505 N.E.

506 N.E.

BRENTWOOD RD

14

402 N.E.

403 N.E.

404 N.E.

405 N.E.

406 N.E.

407 N.E.

MANCHESTER AV.

N. 28TH ST.

N. 27TH ST.

N. 26TH ST.

N. 25TH ST.

302 N.E.

303 N.E.

304 N.E.

305 N.E.

306 N.E.

307 N.E.

WORCESTER AV.

AV.

(NOT OPEN)

202 N.E.

203 N.E.

204 N.E.

205 N.E.

206 N.E.

ILCHESTER AV.

AV.

DORCHESTER AV.

AV.

Scale 100 Ft. to One Inch.

Copyright 1923 by the Sanborn Map Co.

12

6

(58.58)

14

FEB. 1923
MIDDLESBORO
KY.

SCALE 100 FT. TO AN INCH



15



Scale 100 Ft to One Inch.

Copyright 1923 by the Sanborn Map Co.

DORCHESTER AV.

PUBLIC LIBRARY

N. 20TH ST.

2

13

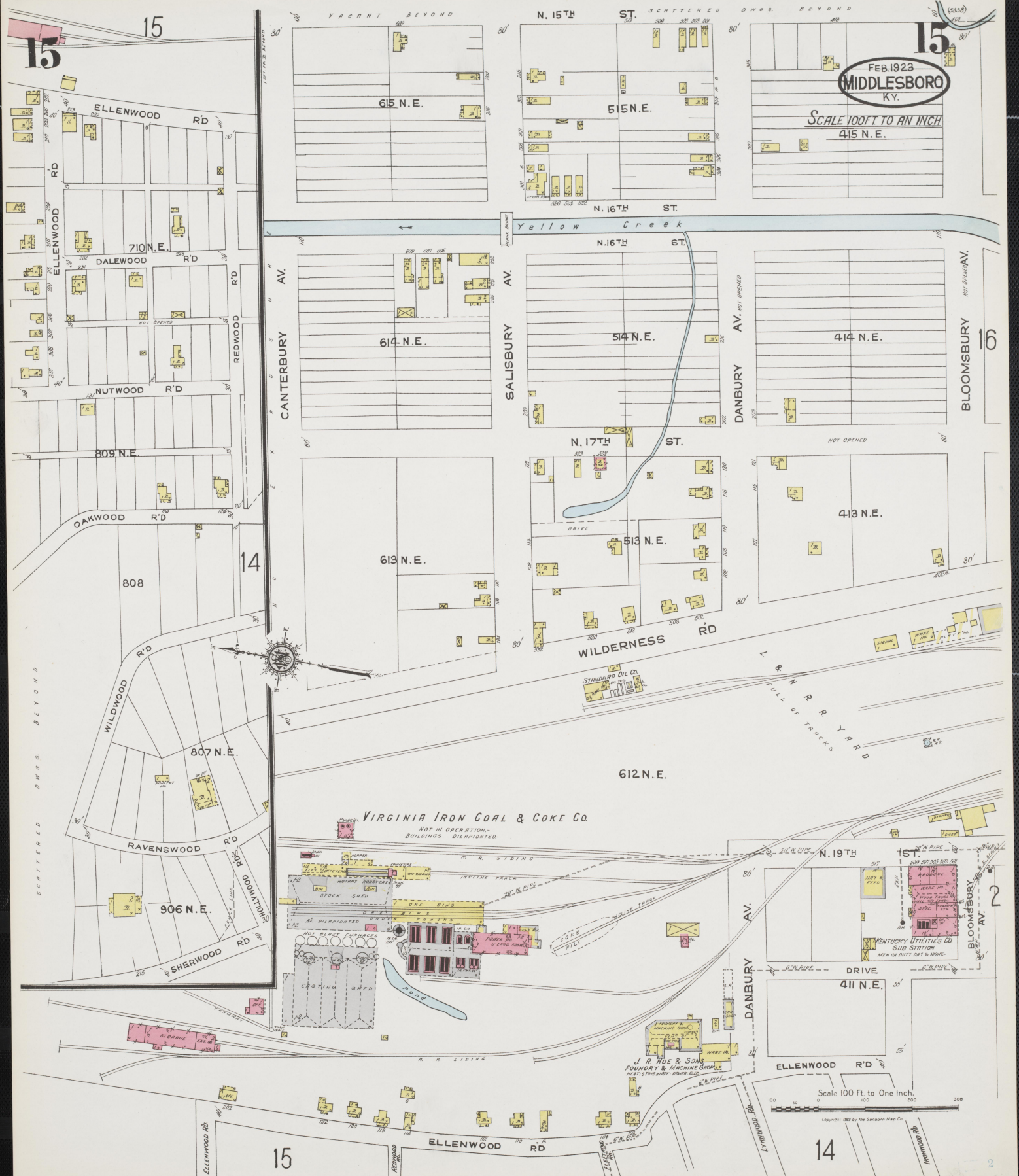
N. 24TH ST.

N. 24TH ST.

5

4

2



FEB. 1923
MIDDLESBORO
KY.

SCALE 100 FT. TO AN INCH
415 N. E.

VIRGINIA IRON COAL & COKE CO
NOT IN OPERATION - BUILDINGS DILAPIDATED.

J. HOE & SONS
FOUNDRY & MACHINE SHOP
NEXT STOREYRT. POWER PLANT.

KENTUCKY UTILITIES CO
SUB STATION
MAY BE DIRTY, BUT BLIND.

Scale 100 Ft. to One Inch.

Copyright, 1923 by the Sanborn Map Co.

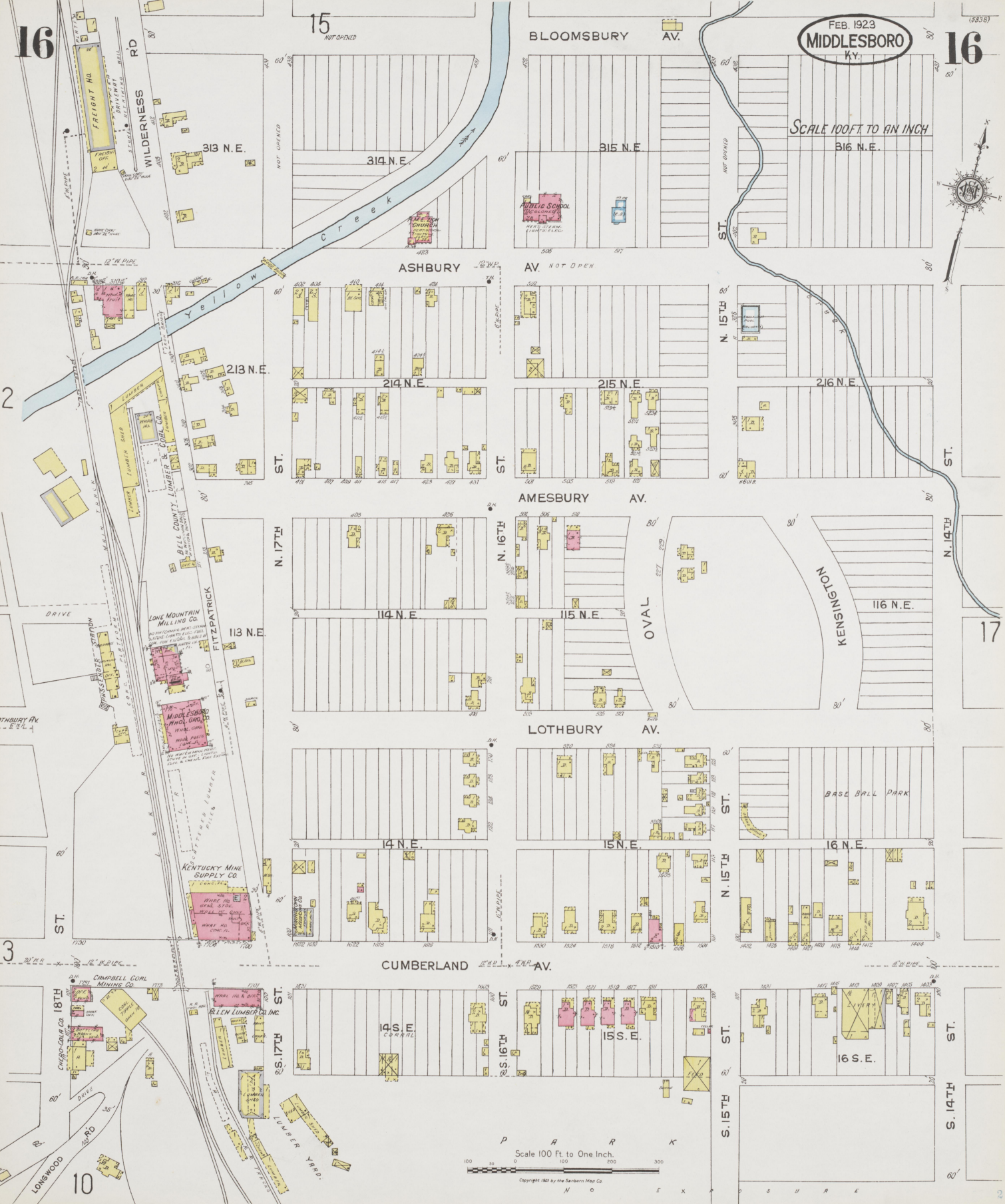
16

15

16

FEB. 1923
MIDDLESBORO
KY.

SCALE 100 FT. TO AN INCH



2

17

3

10

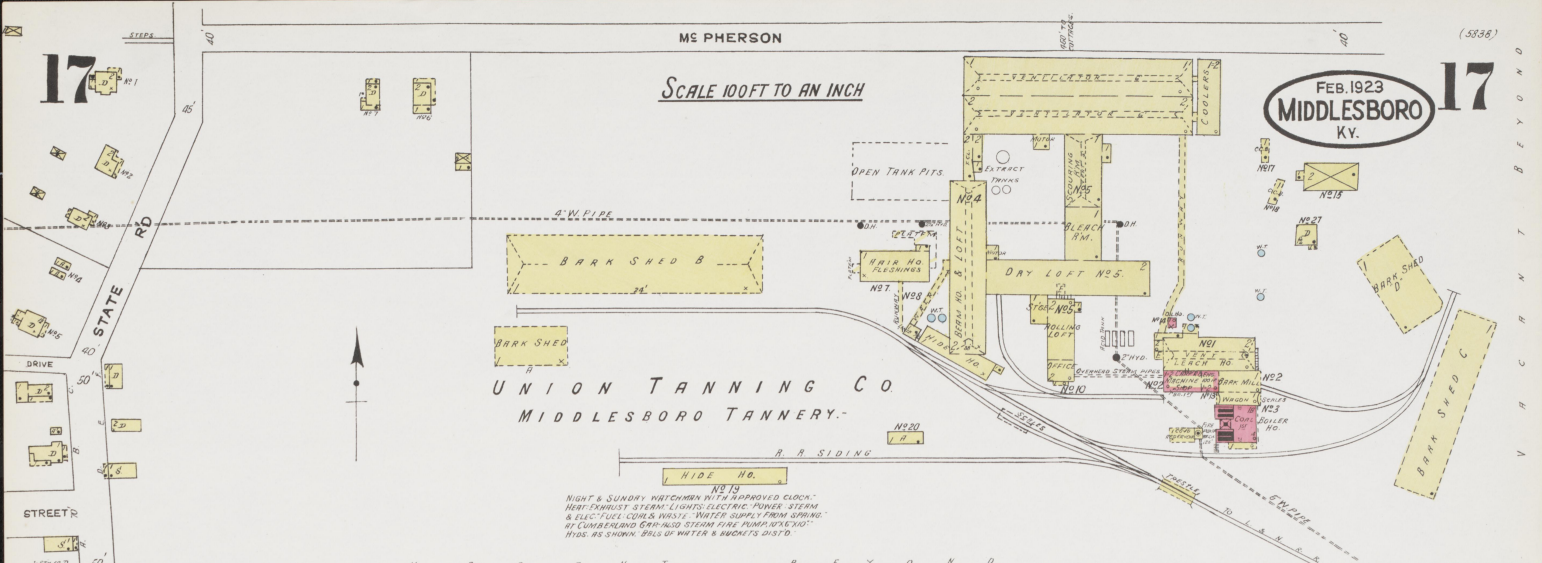
Scale 100 Ft. to One Inch.
Copyright 1923 by the Sanborn Map Co.

FEB. 1923
MIDDLESBORO
KY.

ME PHERSON
SCALE 100 FT TO AN INCH

UNION TANNING CO
MIDDLESBORO TANNERY

HIDE HO.
N.B. 19
NIGHT & SUNDAY WATCHMEN WITH APPROVED CLOCK -
HEAT EXHAUST STEAM LIFTS ELECTRIC POWER STEAM &
ELECTRIC FUEL COILS W/ST. WATER SUPPLY FROM SPRING
W/ COMBUSTIBLE GAS-HOLD STEAM-FIRE PUMPS 1/2" DIA
HYDS. AS SHOWN. BALS OF WATER & BUDGET'S DIST'D.



V E R C R N T B E Y O N D



20

20

GLOUCESTER AV. 15582 80'

FEB. 1923
MIDDLESBORO
KY.

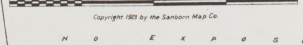
12 N.E.
SCALE 100 FT. TO AN INCH.

N. 41 1/2' ST. NOT OPEN

11 N.E.



Scale 100 Ft to One Inch.



Copyright 1923 by the Sanborn Map Co.

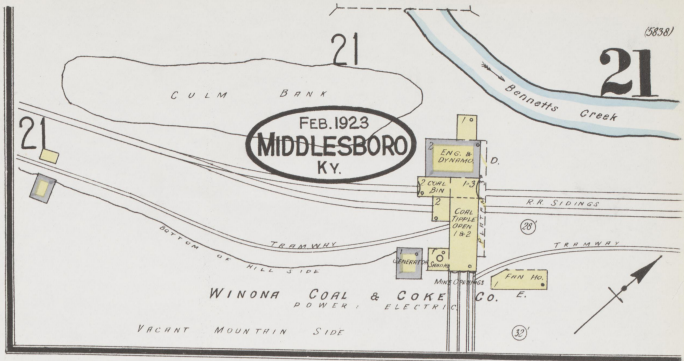
N O T E P R O P O R T I O N S

19

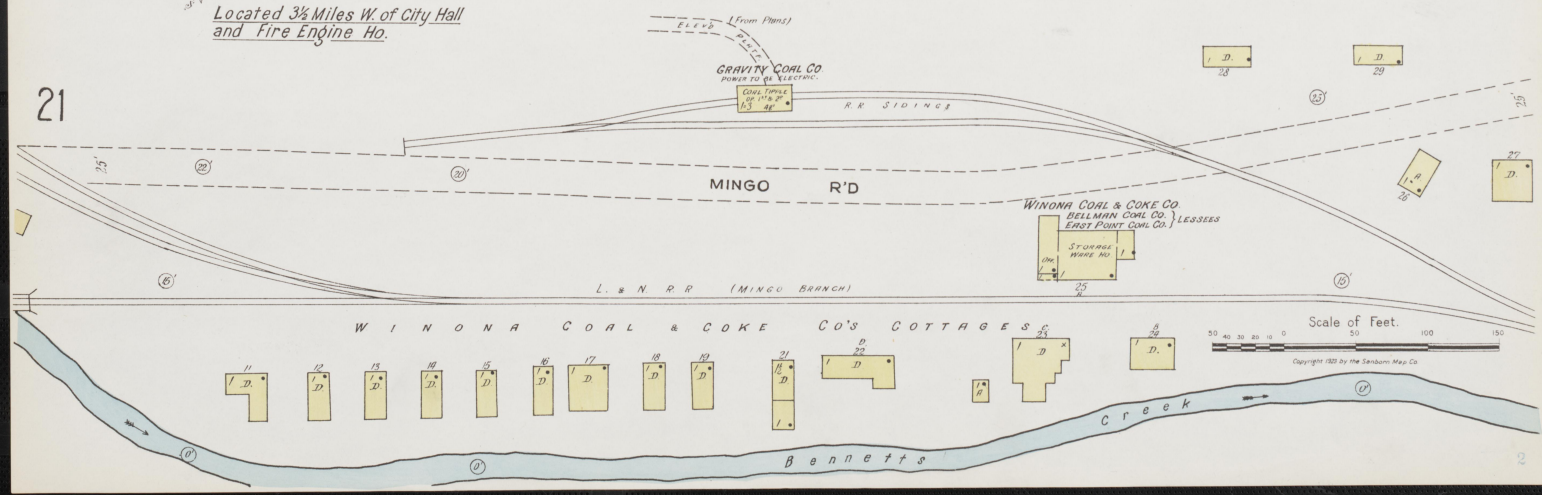
2

21

SIDE OF MOUNTAIN



Located 3 1/2 Miles W. of City Hall and Fire Engine Ho.

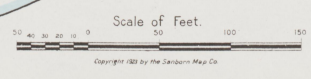
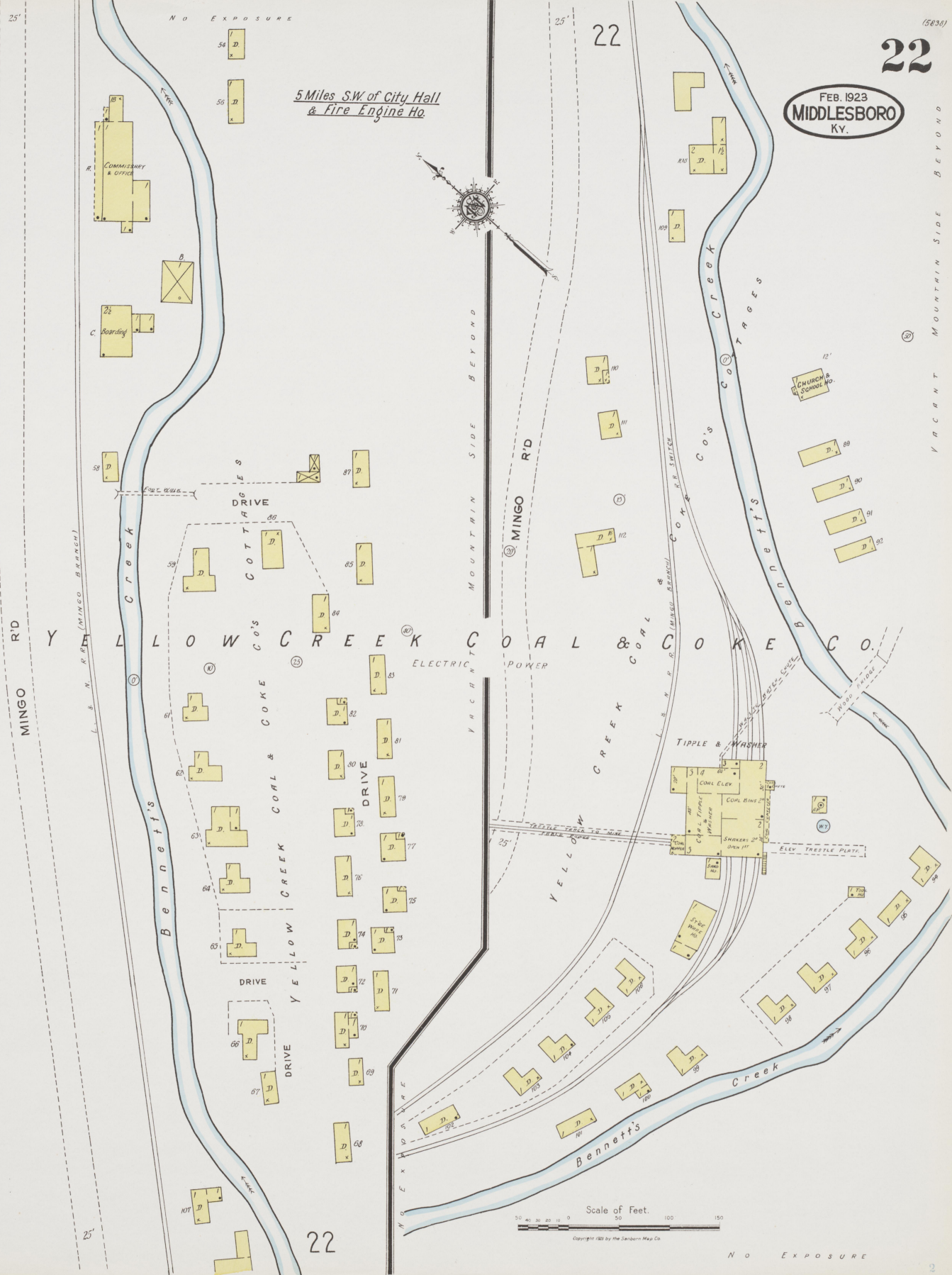


FEB. 1923
MIDDLESBORO
KY.

5 Miles SW of City Hall
& Fire Engine Ho.

V A R C H A N T M O U N T A I N S I D E B E Y O N D

V A R C H A N T M O U N T A I N S I D E B E Y O N D



N O E X P O S U R E

23

LOGMONT
Located 10 Miles N.W. of Middlesboro

23

FEB. 1923
MIDDLESBORO
KY.

23

(5338)

V A C U U M M O U N T A I N S I D E

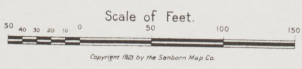
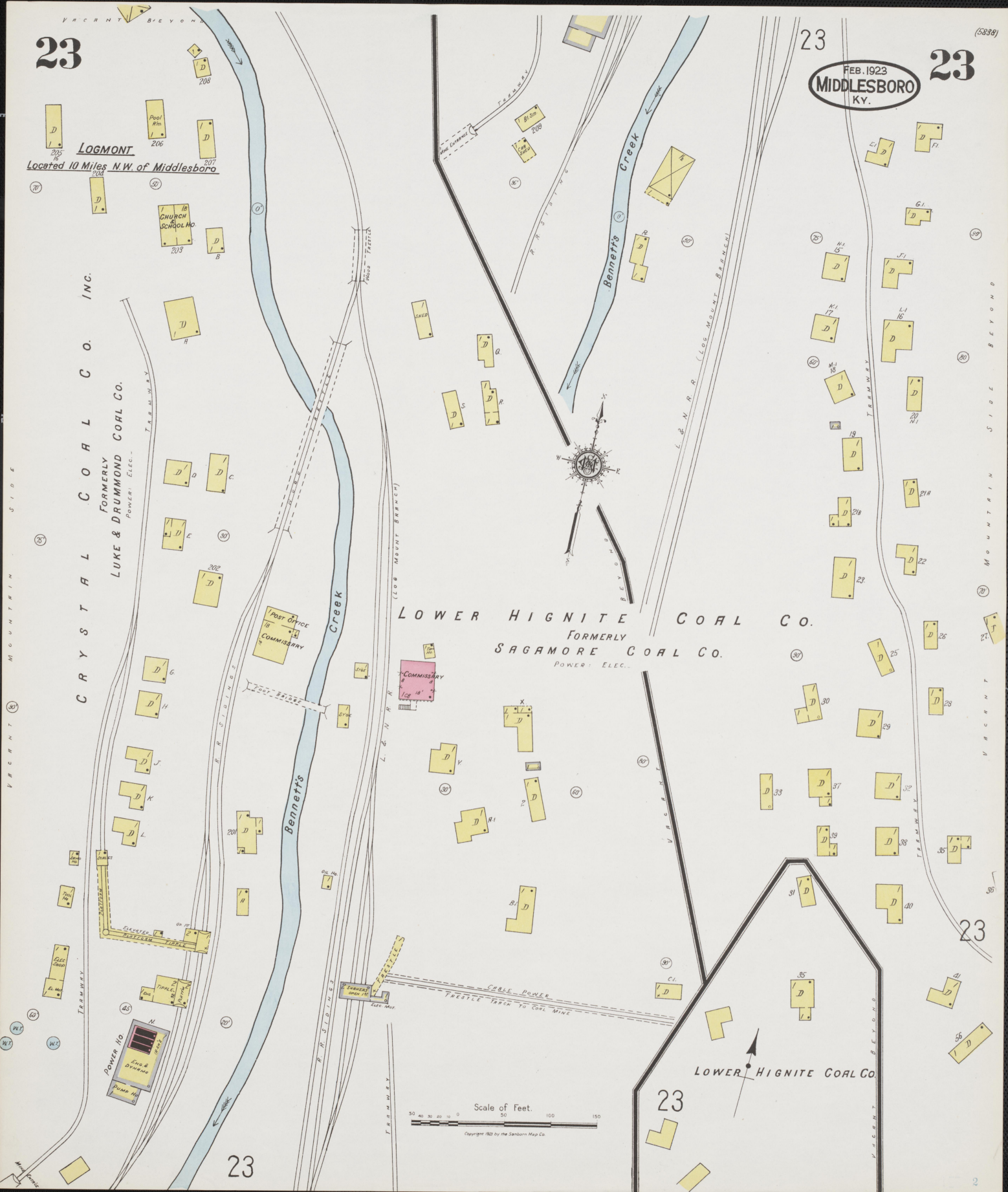
V A C U U M M O U N T A I N S I D E

C R Y S T A L C O A L C O . I N C .

FORMERLY
LUKE & DRUMMOND COAL CO.
POWER, ELEC.

LOWER HIGNITE COAL CO.
FORMERLY
SAGAMORE COAL CO.
POWER, ELEC.

LOWER HIGNITE COAL CO.



23

23

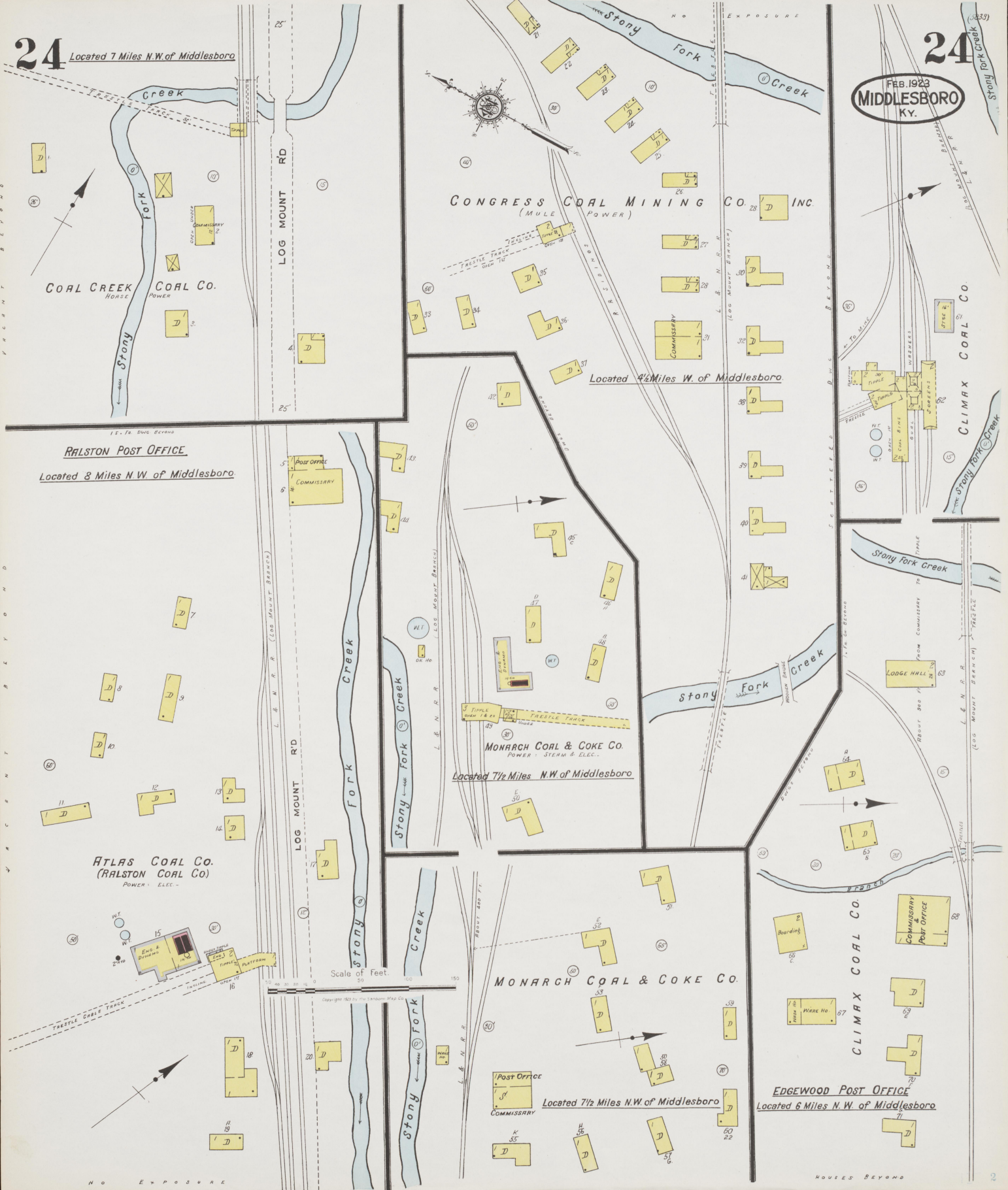
23

2

24 Located 7 Miles N.W. of Middlesboro

24

FEB. 1923
MIDDLESBORO
KY.



RALSTON POST OFFICE
Located 8 Miles N.W. of Middlesboro

Located 4 1/2 Miles W. of Middlesboro

MONARCH COAL & COKE CO.
POWER STEAM & ELEC.
Located 7 1/2 Miles N.W. of Middlesboro

ATLAS COAL CO.
(RALSTON COAL CO.)
POWER & ELEC.

MONARCH COAL & COKE CO.

Located 7 1/2 Miles N.W. of Middlesboro

EDGEWOOD POST OFFICE
Located 6 Miles N.W. of Middlesboro

CLIMAX COAL CO.

HOUSES BEYOND

HOUSES BEYOND

25

Located 8 Miles N.W. of Middlesboro.



HIGNITE COAL CO.
POWER: STEAM & ELEC. (I.E.P.)

8 Miles W. of Middlesboro.

LONG BRANCH COAL CO.
(MULE POWER)

25

FEB. 1923
MIDDLESBORO
KY.

7 1/4 Miles N.W. of Middlesboro (Mule Power)

CLOVER LEAF COAL CO.

DIXIE JIM COAL CO.
(MULE POWER)

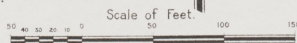
7 Miles N.W. of Middlesboro.

PINACLE COAL CO.
FORMERLY STONY FORK COAL CO.
POWER: STEAM & ELEC. (I.E.P.)

HAWLEY COAL CO.
MULE POWER

8 Miles N.W. of Middlesboro.

Located 10 Miles N.W. of Middlesboro & 1 Mile N. of Logmont



Copyright 1923 by the Sanborn Map Co.

