

THE **GATECH** GAME

STOLL FIELD • SEPT. 22, 1956

KENTUCKY OFFICIAL PROGRAM - 25¢

We're Rootin' for you Kentucky Wildcats!

Begley's

**The Begley Drug Company
Three Stores In Lexington:**

- 1198 NORTH LIMESTONE
- 878 EAST HIGH STREET
- 404 SOUTHERN U PASS

**SERVING
THE BEST IN DRUG STORE NEEDS**

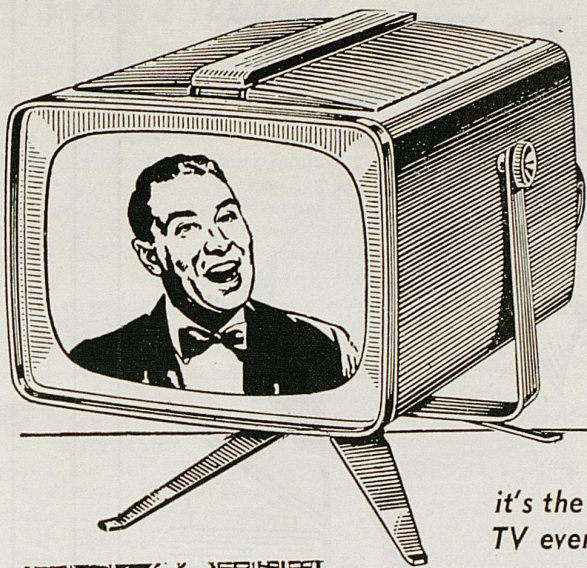
**We Also Serve Central and Eastern Kentucky
With Stores In:**

LONDON
RICHMOND
SOMERSET
MT. STERLING
DANVILLE
SHELBYVILLE

CORBIN
STANFORD
IRVINE
McKEE
CYNTHIANA
WINCHESTER

*"36 Years of Reliable Drug Service"
"You're Always Welcome At Begley's"*

A new achievement in Television Luxury



new **RCA VICTOR**
"Personal" TV

YOU'VE GOT TO SEE IT, lift it, try it . . . to believe it! You get famous RCA Victor performance in a set only 9½" wide, 8⅛" high (without removable stand), 12⅞" long!

Handy telescoping antenna helps bring you a clear, sharp, steady picture. Trim modern cabinet in ebony, red, gray or ivory textured finishes.

it's the smartest, smallest TV ever built!

Only **\$125.00**



Watch TV in your own room!

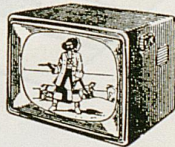


Children "go quietly" with the "Personal."



Take it to the office!

The Dixon. 261 sq. in. viewable "Living Image" picture. Ebony finish; maroon or limed oak grained finishes extra. Model 21T715. **\$229.95**



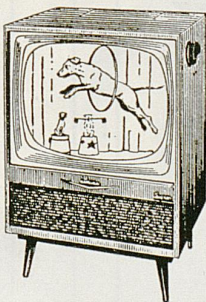
The Allen. Huge 329 sq. in. viewable "Living Image" picture. Ebony finish; mahogany grained or limed oak grained finishes extra. Model 24T727. **\$279.95**



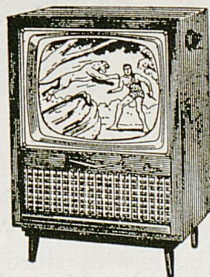
The Ranstead Deluxe. It swivels! 261 sq. in. viewable area. 3 speakers! 3 finishes: mahogany; birch; blond tropical hardwood with walnut trim. Model 21D748.



\$379.50

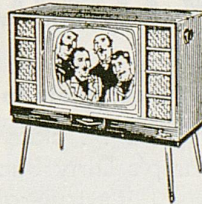


The Eaton. 261 sq. in. viewable "Living Image" picture. Ebony, mahogany grained or limed oak grained finishes. Model 21T735. **\$279.95**

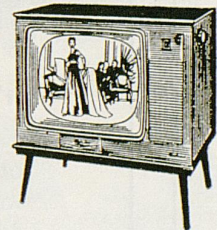


The Enfield. It swivels! 261 sq. in. viewable area. Mahogany grained finish. Model 21T738.

\$309.95



The Raeburn. 261 sq. in. viewable area. Mahogany grained, walnut grained with blond tropical hardwood or limed oak grained finishes. Model 21T741. **\$359.95**



The Endcott Deluxe. 329 sq. in. viewable area. Finished in blond tropical hardwood with natural walnut. Model 24D758.

\$419.50

669 SOUTH BROADWAY
LEXINGTON, KY.
PHONE 2-6886

Sterling
INC.
FAMOUS FOR FAMOUS BRANDS

TELEVISION—RADIOS
HIFI RECORDS
HIFI PHONOGRAPHS
APPLIANCES

DIRTY BUCK

BY

WINTHROP



"the WILDCAT" by **WINTHROP** SHOES

It's the shoe "most likely to succeed"

Year after year . . . class after class . . . freshmen and grads agree Winthrop's Dirty Buck is a must in well-balanced campus wardrobes . . . it's truly a part of campus life. 'The Wildcat' is carefully styled in glove soft creamy buck with sturdy long-wearing red rubber soles and heels.

10.95

Be a Wildcat Booster First, Last and Always

PURCELL'S

MEN'S SHOES MAIN FLOOR

Today's Game . . .

The stage is set for the first nationally-televised athletic contest ever videoed out of the Bluegrass.

Kentucky's favorite-son Wildcats, only a shadow of their 1955 selves, meet overwhelming favorite Georgia Tech in a season lid-lifting football game on Stoll Field this afternoon under the revealing glare of the television cameras as the inaugural program in the NCAA-NBC Television "Game of the Week" series for 1956.

The Yellow Jackets of veteran Coach Bobby Dodd already have been established by the experts as one of the most prohibitive pre-season choices in history to become 1956 Southeastern Conference champs and to reign as one of the top two or three powers in the country. Solid and deep from end to fullback in experienced personnel back from last season's Cotton Bowl champion squad, including 19 of the first 22 men in the '55 picture, Georgia Tech also boasts the distinction of never having lost in a nationally-televised contest.

In contrast, Blanton Collier's pupils lost seven starters among 15 lettermen departed since the 6-3-1 campaign of last season and will be somewhat shallow at certain positions when they face Tech today. Furthermore, this is the Wildcats' first appearance before the network TV cameras.

However, what they give away to the invaders in sheer strength of experienced hands, the Colliermen make up by countering with equally sheer desire and determination plus some outstanding personnel who can be depended upon to carry the fight to the Jackets. They are fellows like beefy All-America candidate Lou Michaels (79), Co-Captain and linebacking center Dave Kuhn (55) and plunging fullback Bob Dougherty (44) to name a few who pose as great leaders and big equalizers.

KENTUCKY

"WILDCATS"

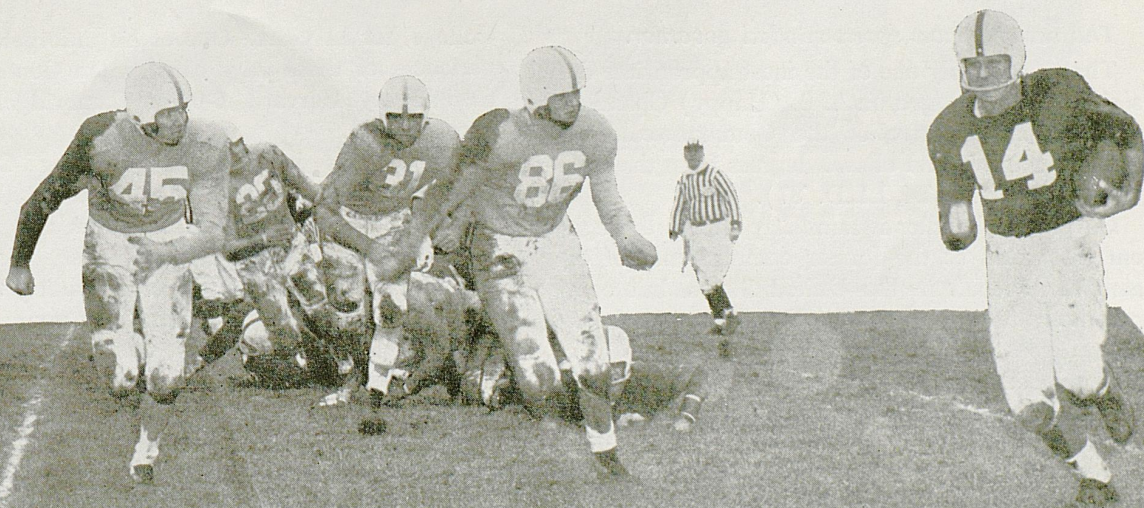
VERSUS

GEORGIA TECH

"YELLOW JACKETS"

September 22, 1956

STOLL FIELD



OFFICIAL KENTUCKY FOOTBALL PROGRAM

Edited by Ken Kuhn, Sports Publicity Editor
Published by University of Kentucky Athletics Association
Represented for National Advertising by
Don Spencer Co., New York



As coach with Centre's Southern Champions, 1924

THE HONORABLE
Albert B. Chandler
 GOVERNOR OF KENTUCKY



As Kentucky's Chief Executive, 1956

The nation's most sports-minded governor.

That is probably one of the most appropriate descriptions ever tagged on A. B. (Happy) Chandler, twice chief executive of the Commonwealth of Kentucky and holder of two degrees from the state university (LL.B. '24, LL.D. '37).

Governor Chandler is familiarly known throughout the world as the former commissioner of organized baseball in the United States, but comparatively few people know that his sports background goes back even further.

He played baseball for the Grafton (N. D.) team of the Red River Valley League, between terms at Transylvania College. Following graduation, Happy entered Harvard Law School and, even in these busy days, found time to tutor football and basketball teams at Wellsley Hills (Mass.) High School.

Later he enrolled at UK and, in between law classes, coached basketball at Versailles High. He was also coach of the 1922 UK girls' basketball team.

The energetic young man somehow found time to be a scout and assistant football coach at Centre

College, for 11 years. One of his unforgettable experiences of these days came when Centre upset then-mighty Harvard, 6-0, at Cambridge, Mass., back in 1921.

Many years later, after becoming Governor (1935) and U. S. Senator (1939), he served as Baseball Commissioner for six years and was extremely popular with the ballplayers.

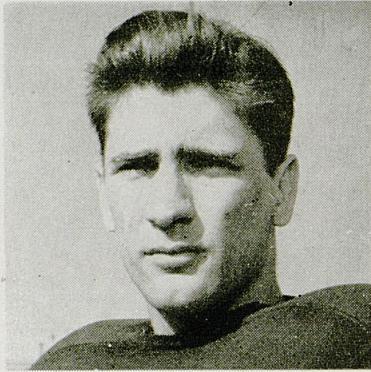
Governor Chandler has been attending UK athletic events for nearly 40 years. His youngest son, Dan, now in the U. S. Army, was a recent member of the Kentucky basketball squad. Ben, his other son, is also an alumnus of UK.

In addition, he has backed the University in other ways. Spearheaded by Governor Chandler, the 1956 Assembly appropriated \$5,000,000 to start construction of the new UK Medical Center. Another \$6,000,000 is pledged.

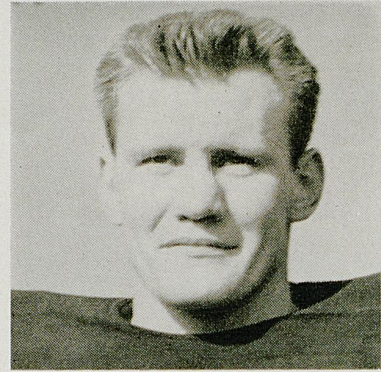
Educational allotments throughout the Commonwealth are at an all-time high, largely through the efforts of the Governor, and the recent Legislative appropriations to schools.

—TOM DISKIN

"MYSTERY WILDCATS"



A face that should be familiar to every Kentucky fan . . . He ranks not only as UK's first All-American backfield man, but also is generally thought of as one of the greatest players in southern football history . . . Many of his numerous national passing marks still dot the record books . . . A native of Pennsylvania, he saw service after graduation with the professional Green Bay Packers and currently is a key man in the Cleveland Browns' 1956 success plans.



One of his chief claims to fame is the distinction of being the only Wildcat ever to participate in all four of Kentucky's post-season bowl games (Great Lakes, 1947; Orange, 1950; Sugar, 1951; and Cotton, 1952) . . . Despite outstanding play, the West Virginia product never received top mention on the honor teams due to a plague of injuries throughout his career.

For identification of Today's "Mystery Wildcats," see footnote on page 48.

DR. H. L. DONOVAN — A GUIDING HAND

Few but the closest friends and associates ever realized the full import of the influence of a great man on a great university's program of inter-collegiate athletics when President Herman Lee Donovan retired from active direction of the University of Kentucky on September 1.

And, very likely, such an intangible and seemingly irrelevant part of a great administrator's leadership of Kentucky's state university over the past decade and a half will continue to go virtually unnoticed when the historians recount the Donovan Era. However, those who know of his tremendous contributions toward fostering and furthering a well-rounded athletic program during his tenure of office would assure you that Dr. Donovan is deserving of the highest recognition for this phase of his administration as he is for many other educational and cultural efforts.

Material evidence of Dr. Donovan's understanding of the place of a fine athletic program in an institution's life abound about the campus—beautiful and spacious Memorial Coliseum, a football stadium the

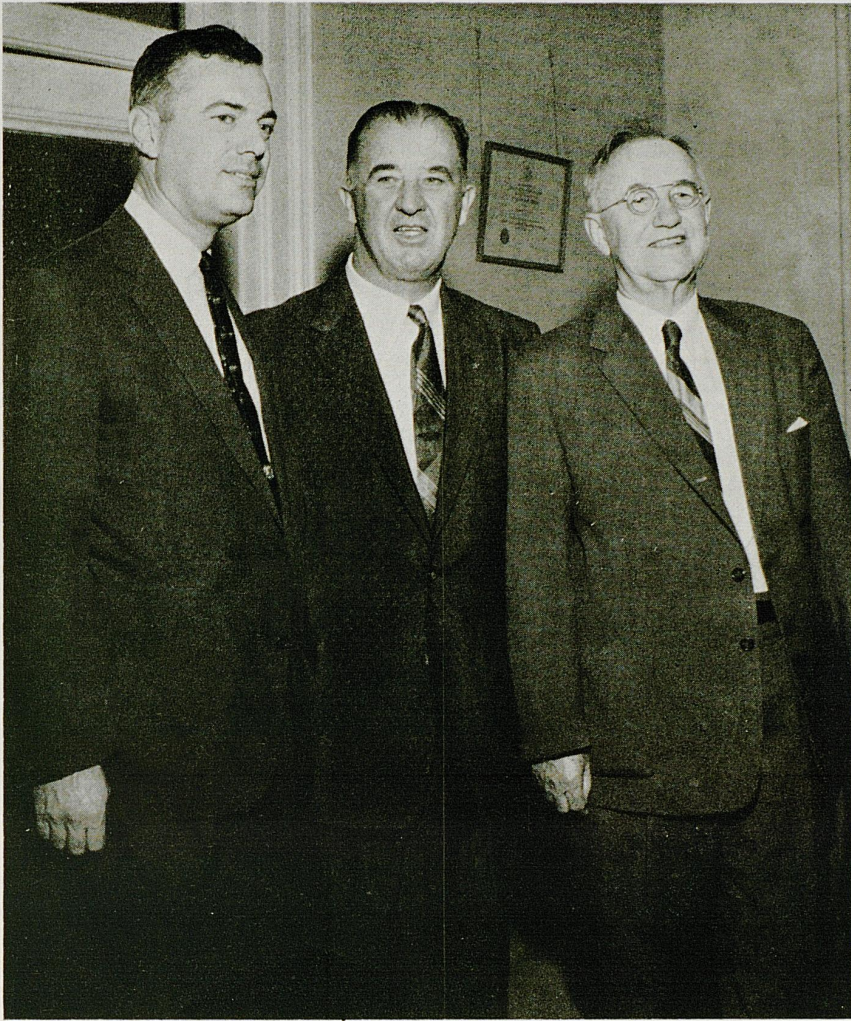
equal to that at any school of comparable size in the nation, unequalled living quarters for the grid team, excellent practice facilities, a fine baseball diamond and tennis courts.

Equally important has been the guiding hand exercised by President Donovan as titular head of the University of Kentucky Athletics Association, a corporation which he helped to found in 1945. The association is a self-supporting organization with aims of promoting a well-rounded, high-level program of inter-collegiate athletics for the enjoyment of the sports-loving public at no cost to the taxpayer except the price of admission.

In the face of great odds, the President personally lent his influence to continual improvement of the quality of athletics as an integral part of University life—further testimony to the fact that Dr. Herman Lee Donovan is adjudged throughout the nation as one of America's most distinguished educators.

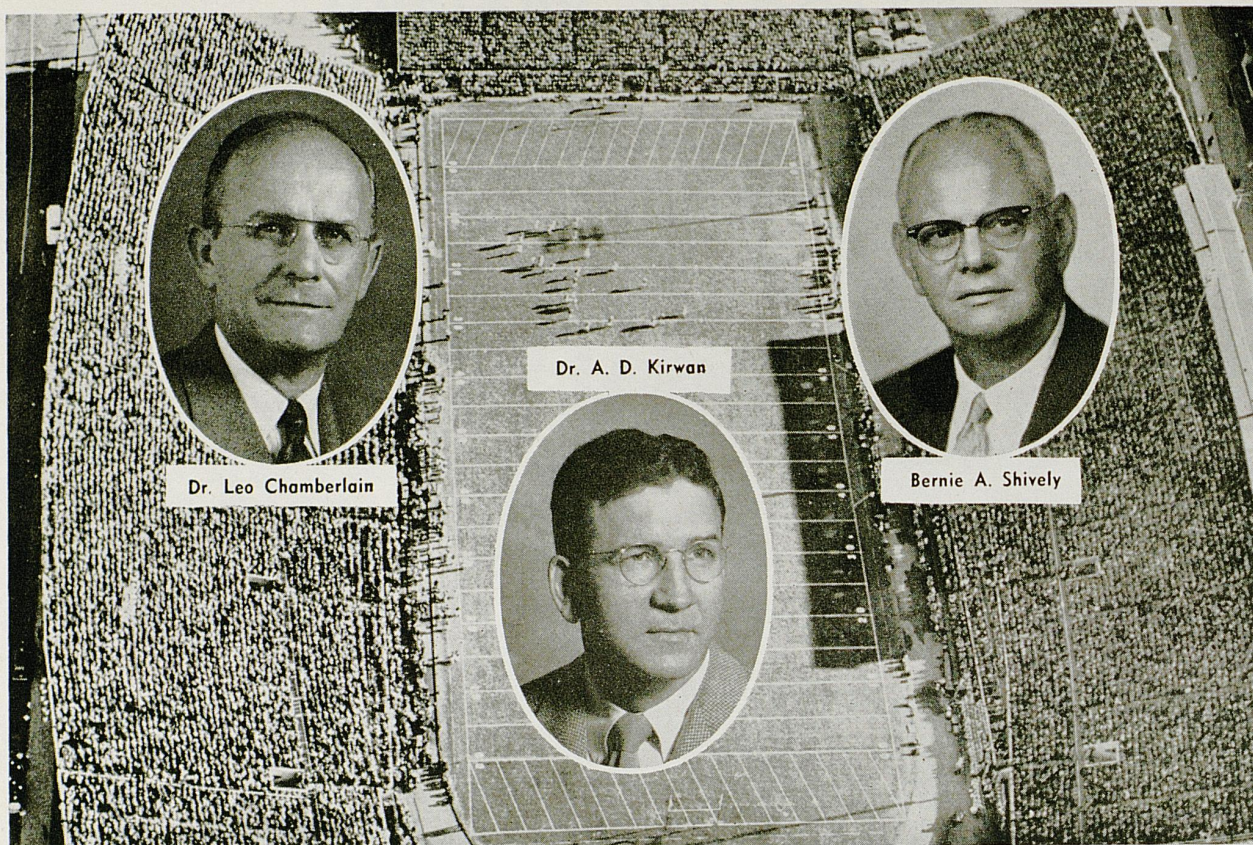
The guiding hand of the past will be missed.

—KEN KUHN



"The Kentucky Story"

SEVENTEEN YEARS ago this month, Frank G. Dickey was employed as a teacher by the Lexington city school system. In addition to his teaching duties, he served as director of intramural athletics for Morton Junior High School. As an instructor of boys and girls, Frank Dickey knew the importance of building strong, healthy bodies; today, as the newly-named President of the University of Kentucky, his interest in maintaining a well-rounded program of athletics continues. Pictured above with President Dickey are two other men who through the years have given wholehearted support to athletics at UK: Governor A. B. Chandler, chairman of the University's Board of Trustees, and President-Emeritus H. L. Donovan.



Dr. Leo Chamberlain

Dr. A. D. Kirwan

Bernie A. Shively

Athletics at Kentucky

Kentucky's athletics program is organized under the Department of Athletics and a corporation known as the University of Kentucky Athletics Association.

A firm believer in sports and sportsmanship, Dr. Leo M. Chamberlain, Vice-President of the University, has general supervision over the Department and also serves as vice chairman of the Board of Directors of the Association.

Former UK football player and one-time Wildcat coach, Dr. A. D. Kirwan, acts as secretary to the Association. He also is the school's faculty representative to the Southeastern Conference.

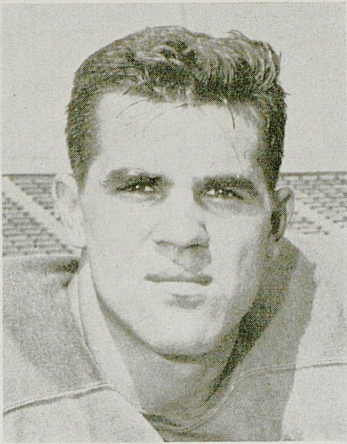
Supervising the steady growth and balanced development of one of the nation's top athletic programs as Director of Athletics is Bernie A. Shively. The former Illinois All-America footballer has guided the development of Kentucky as a nationally-respected power in major sports since 1938 and gained wide prestige through a fair-minded approach to many problems. Under his direction, the seating capacity of McLean Stadium has been doubled, powerful lighting equipment installed to

bring night football into new popularity, mammoth Memorial Coliseum constructed, new practice facilities and two modern living units (Wildcat Manor and Kitten Lodge) provided for the grid-iron teams.

Maintaining over-all control of U.K. athletics affairs is the Board of Directors of the Athletics Association, composed of the President of the University and 10 other directors appointed by him, including five members of the faculty of the University, the president of the Student Government Association, an alumnus of the school, a member of the U.K. Board of Trustees, and two others. Frank D. Peterson, University Vice President of Business Administration, serves the board as treasurer.

The current Board of Directors consists of:

- | | |
|----------------------------------|--|
| Dr. Frank G. Dickey,
Chairman | Dr. Leo M. Chamberlain,
Vice Chairman |
| Dr. A. D. Kirwan,
Secretary | Richard K. Lehman
(Student) |
| Dr. Ralph Angelucci | Robert Hobson |
| Thomas H. Ballantine | Alfred L. Crabb |
| George K. Brady | Paul Oberst |
| Aubrey J. Brown | H. D. Palmore |
| Thomas Clark | D. V. Terrell |
| Lyman Ginger | William A. Tolman |

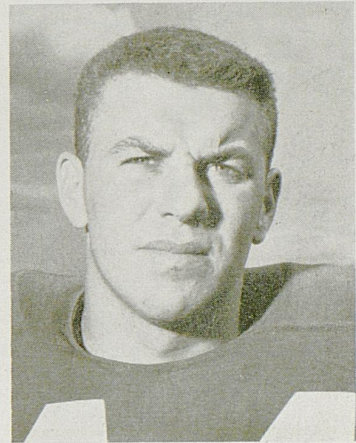


LOU MICHAELS
Junior — Tackle
Swoyerville, Pa.

When usually-placid professional scouts abandon their reserved composure to drool over an "interior" lineman—and a sophomore to boot—it's a pretty good tipoff that they have spotted a potentially great prospect. Such is the case of UK's great tackle Lou Michaels. With only one season of varsity play under his belt, the mature young giant from Swoyerville, Pa., is already being tabbed by the experts as a potential All-American. At 6-2 and 230 pounds, Michaels has the physical equipment to go along with great ability, strength, speed, agility and a keen mind—attributes of a great football player—and Coach Collier classes Lou as "one of the best I have seen in collegiate ranks."

Before the 1955 season opened, Coach Collier had grave doubts that his fullback situation was as sound as it should be and wondered if big Bob Dougherty, after a three-year absence from collegiate competition, could get the job done. The smiling Irishman from Bellevue, Ky., every inch the battering-ram type of fullback that is a coach's dream, had already been picked by the Los Angeles Rams for a future in pro ball. But he remained the big question mark nevertheless. Subsequent action by Mr. Dougherty, as one of the leading ground gainers in the conference and outstanding defense man, proved all worries needless, and served notice that the 212-pound lad will be a serious force to be reckoned with in '56 as he goes after All-Conference honors.

BOB DOUGHERTY
Senior — Fullback
Bellevue, Ky.



U.S. OLYMPIC COMMITTEE



AMERICAN AUTOMOBILE ASS'N



AMATEUR ATHLETIC UNION



NAT'L COLLEGIATE ATHLETIC ASS'N



NAT'L AERONAUTIC ASS'N



AMERICAN POWER BOAT ASS'N



NAT'L HORSE SHOW ASS'N

Longines

THE WORLD'S MOST HONORED WATCH

Official Watch for the

KENTUCKY GAMES

Quality leader among the finest watches of the world is Longines—winner of 10 World's Fair Grand Prizes and 28 Gold Medals for excellence and elegance, highest Observatory Honors for accuracy.

Of special interest to sportsmen is a series of highly efficient Longines Automatic Watches employing an exclusive self-winding principle. They are shock-resistant, anti-magnetic, with unbreakable mainsprings; many are waterproof*. These outstanding Longines watches are priced from \$75 to \$195.

*as long as crystal, back and stem are intact.



Longines
Oslo Automatic.
14K gold waterproof* case.
Sweep second hand. \$195.

SOLD AND SERVICED
BY MORE THAN
4000 LEADING JEWELERS WHO
PROUDLY DISPLAY THIS EMBLEM





KENTUCKY'S COACHING STAFF. Head Coach Blanton Collier (center, seated) goes over the rugged 1956 schedule of the Wildcats with aides. In back, from the left are Freshman Coach John North; Bill Arnsparger, offensive line coach; Ed Rutledge, freshman backfield coach; and Dominic Fucci, defensive backfield coach. Seated are Charles Bradshaw, end coach; Matt Lair, defensive line coach; and Ermal Allen, backfield coach.

THE WILDCATS' 1956 SCHEDULE

Date	Opponent	Place	Date	Opponent	Place
Sept. 22	*Georgia Tech	Lexington	Oct. 27	*Georgia	Athens
Sept. 29	*Ole Miss	Memphis (N)	Nov. 3	Maryland	College Park
Oct. 6	*Florida	Gainesville	Nov. 10	*Vanderbilt	Lexington (H)
Oct. 13	*Auburn	Lexington (N)	Nov. 17	Xavier	Lexington
Oct. 20	*L. S. U.	Lexington (N)	Nov. 24	*Tennessee	Knoxville

* SEC GAME. (N) Night Game. (H) Homecoming. Home games start at 2 p.m. and 8 p.m.

Recommended by

Duncan Hines

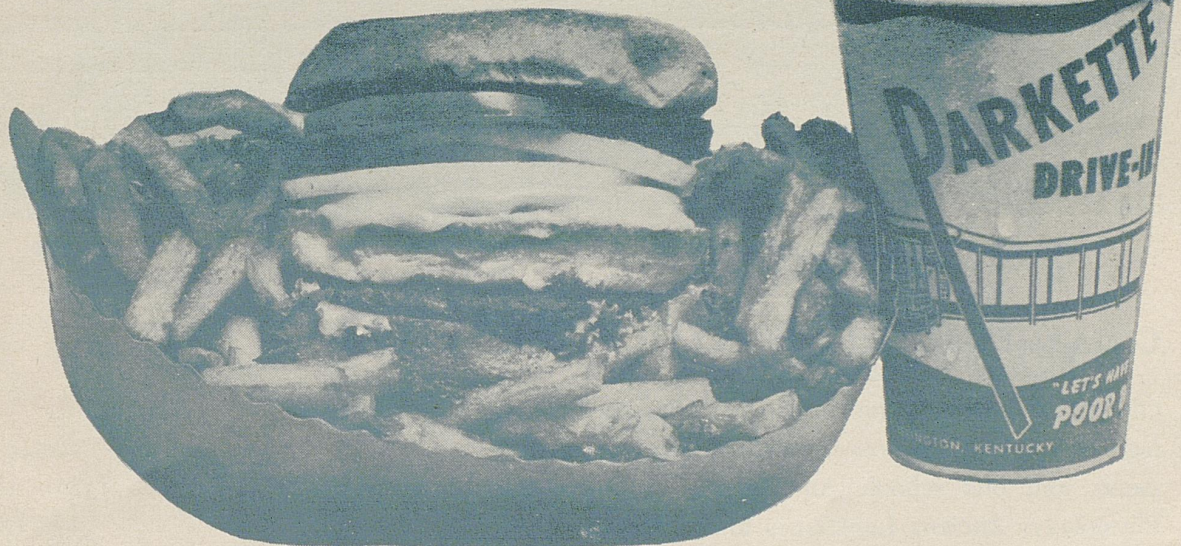
The Golden Horseshoe

Nationally Famous . . .
Lexington's Finest
 Colonel Harry Ware
 at the Organ and Piano

SCORES OVER STOLL FIELD PUBLIC-ADDRESS SYSTEM COME TO YOU THROUGH THE COURTESY OF THE LEXINGTON NEWSPAPERS

Try
Parkette's
Famous
"Poor Boy"

"Before
And After
The Game
Or Show,
The Parkette's
The Place
To Go"



19 OTHER
DELICIOUS
SANDWICHES !

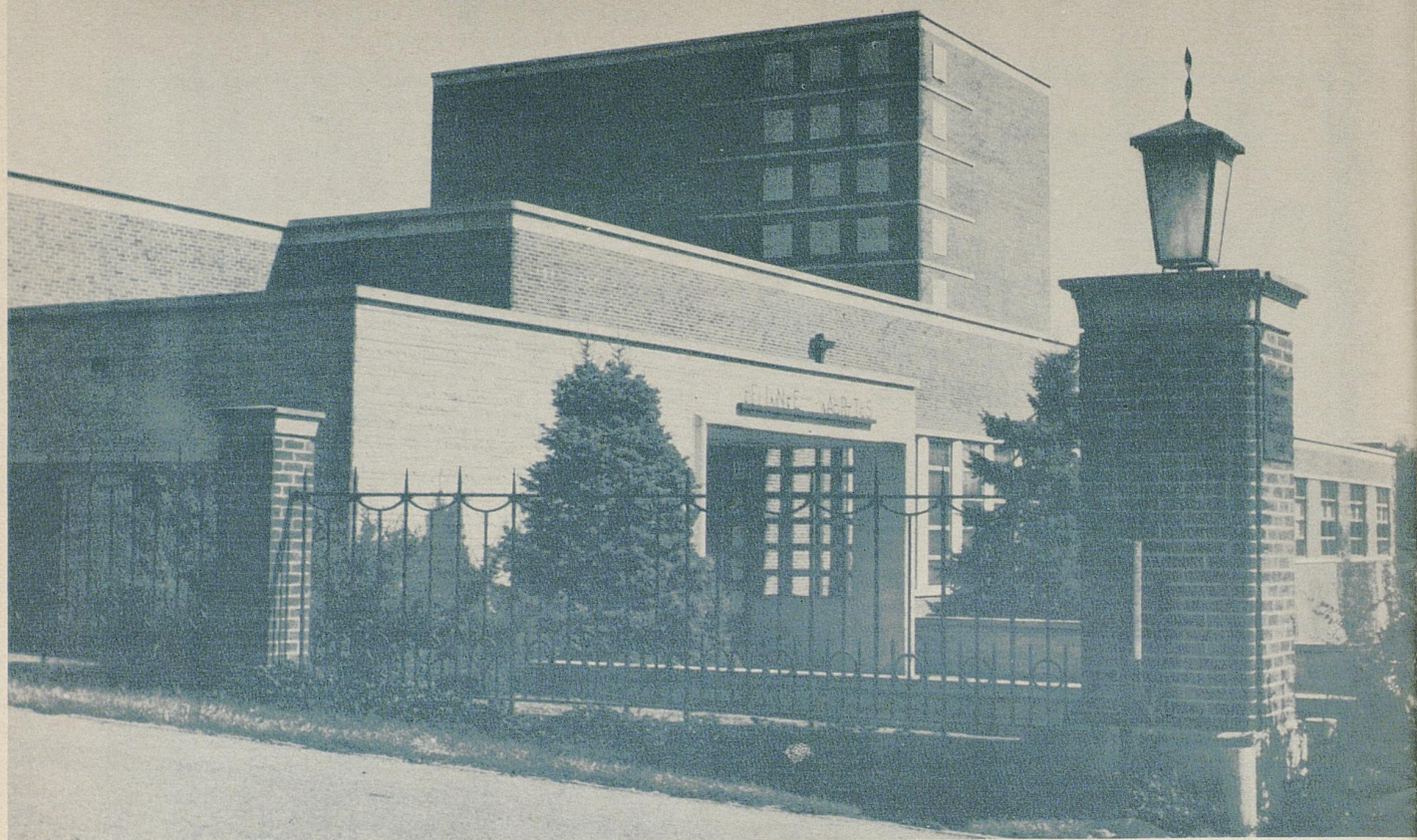
CHICKEN OR
JUMBO SHRIMP !
IN THE BOX

GIANT
MILK
SHAKES !

NOW THERE ARE "2"
Parkette Drive Inns

No. 1—Northeast Beltline . . . On Bypass 25—Phone 4-8723

No. 2—Off Beltline Georgetown Rd. U.S. 25—Phone 2-8617



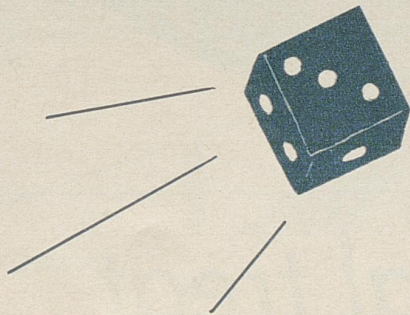
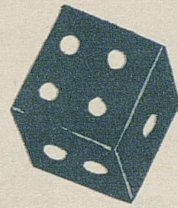
THE NEW AND MODERN FINE ARTS BUILDING

COLLEGE OF Arts and Sciences

Oldest and largest of the University's colleges, the College of Arts and Sciences includes twenty-nine departments and one school: Air Science; Anatomy and Physiology; Ancient Languages and Literatures; Anthropology; Art; Bacteriology; Botany; Chemistry; Economics; English, Speech, and Dramatic Arts; Geography; Geology; History; Hygiene and Public Health; Library Science; Mathematics and Astronomy; Military Science and Tactics; Modern Foreign Languages and Literatures; Music; Nursing; Philosophy; Physical Education; Physics; Political Science; Psychology; Radio Arts; Social Work; Sociology; Zoology; and the School of Journalism. Pre-medical, pre-dental, pre-pharmacy, pre-ministerial, and pre-law courses are offered in this college. The aim of the College of Arts and Sciences is to educate the student in broad fields of interest as well as in one special field, with emphasis on the building of a well-rounded, useful life.

You May Be a Sports Fan...

**BUT DON'T BE
A GAMBLER**



**When
Servicing
Your Car!**

**LET ONLY CHEVROLET TRAINED MECHANICS
DO THE WORK ON YOUR CAR.**

The L. R. Cooke Chevrolet Co.

Phone: 5-2110

180 E. High St.

Closed Sundays

SERVING LEXINGTON OVER 37 YEARS

Bayham's
shoes of distinction

FRENCH SHRINER

MEN'S *Extra Quality* SHOES

KEYED TO COMFORT

Most Styles **\$19.95 to \$24.95**

Other Stores in

Louisville—Paducah—Nashville

Cincinnati—Orlando, Fla.



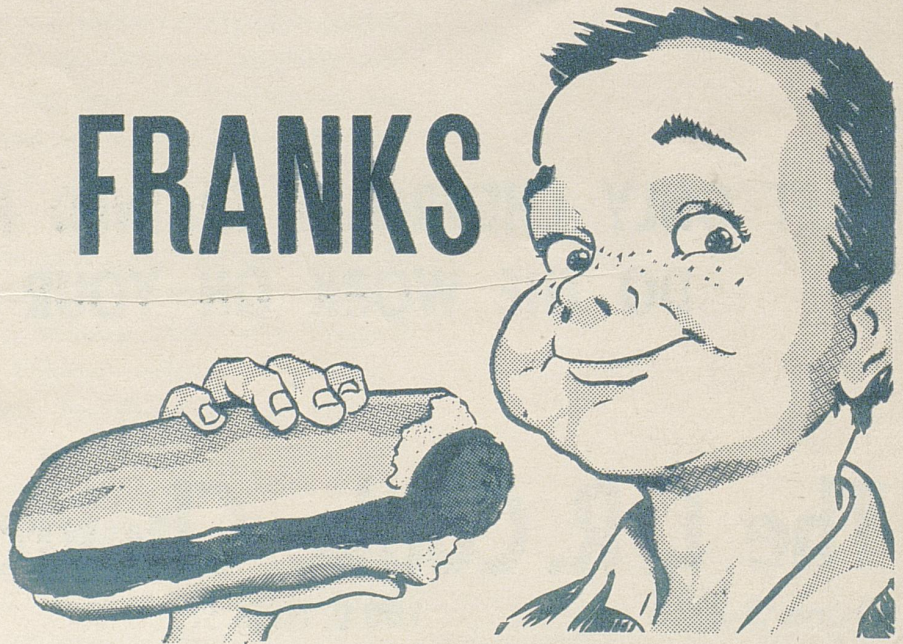
Quality Shoes
for
MEN—WOMEN
CHILDREN

have a real treat . . .

ARMOUR 

FRANKS

with the
"OPEN-FIRE"
FLAVOR

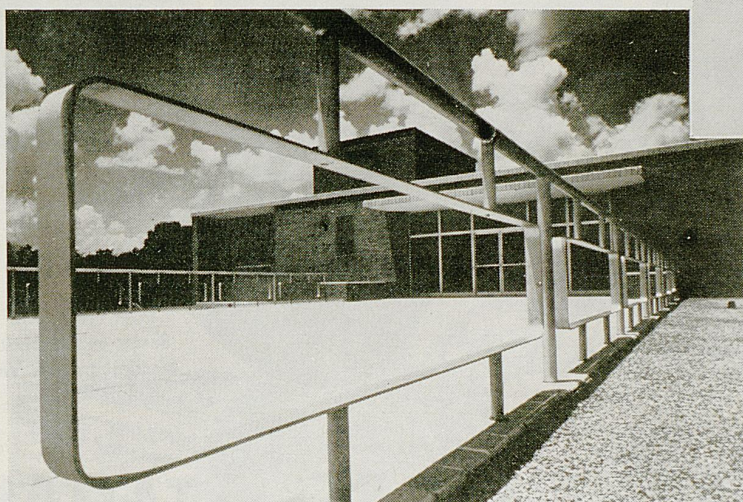


SCORES OVER STOLL FIELD PUBLIC-ADDRESS SYSTEM COME TO
YOU THROUGH THE COURTESY OF THE LEXINGTON NEWSPAPERS

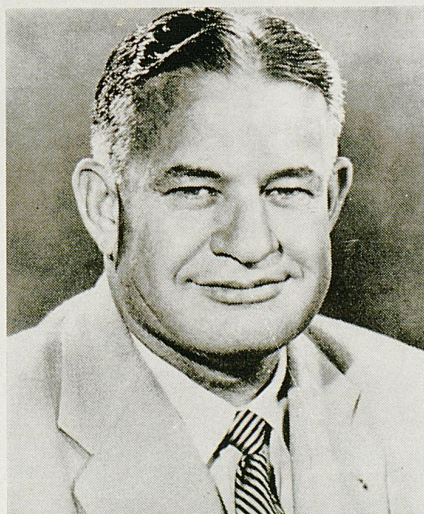
Georgia Tech



DR. PAUL WEBER
Acting President



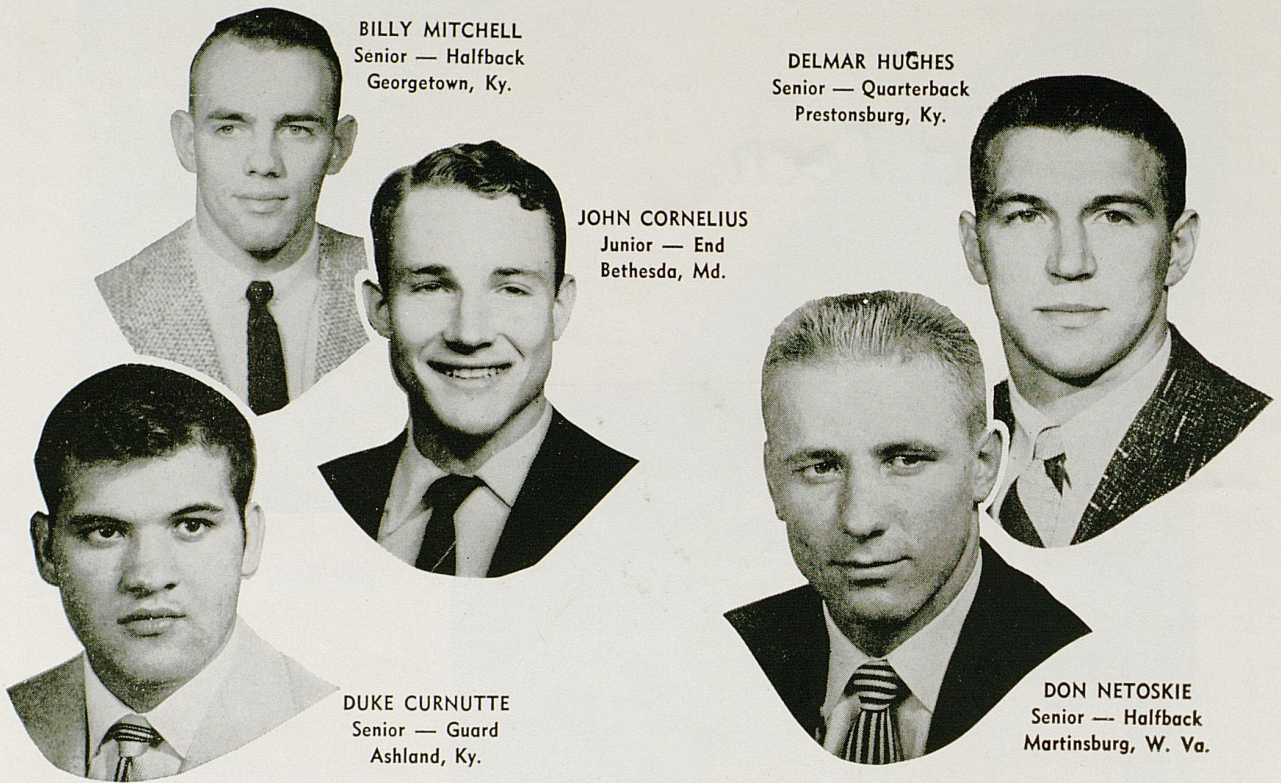
ARCHITECTURE BUILDING



TONTO COLEMAN
Assistant Athletic Director



BOBBY DODD
Head Coach and Athletic Director



BILLY MITCHELL
Senior — Halfback
Georgetown, Ky.

DELMAR HUGHES
Senior — Quarterback
Prestonsburg, Ky.

JOHN CORNELIUS
Junior — End
Bethesda, Md.

DUKE CURNUTTE
Senior — Guard
Ashland, Ky.

DON NETOSKIE
Senior — Halfback
Martinsburg, W. Va.

LEXINGTON'S NO. 1 SPORTS STATIONS

See Coach Collier ...

**EACH SUNDAY, 9.00 P. M., WITH FILM
AND COMMENTS ON ALL UK GAMES**

FOOTBALL GAMES! See the top games of the season on WLEX-TV! Tune to Channel 18 for the clearest, sharpest picture in central Kentucky!



Lexington's Pioneer TV Station

Channel 18 • Lexington

NBC ABC CBS

*Hear
Coach Collier*

TUESDAYS AND
FRIDAYS, 6:30 P. M.

WLEX
1300 ON DIAL



For an accurate, colorful description of

ALL UK GAMES

tune to WLEX radio, Lexington's only independent, non-directional radio station!

5 Years of Progress



1951

1954

and now - **1956**
BIGGER and BETTER
WELGO TRADERS,
at your service!

WELGO TRADERS
← FREE PARKING →

★ **SHOPPING CENTER**
for the entire **FAMILY!**
★

WELGO is on
the march.... watch us
GROW! GROW! GROW!

WELGO TRADERS
WINCHESTER ROAD

FREE PARKING OPEN 9 TO 9

WELGO TRADERS
WINCHESTER ROAD

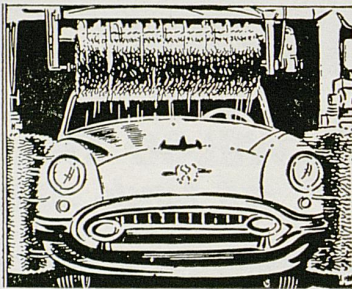
SATISFACTION GUARANTEED WITH EVERY PURCHASE



JIMMY BUTTS
Minit Auto Wash
 Middle of Midland



Tires are cleaned snow white or blacked.



Tops and sides are washed automatically.

**Slickest,
 Quickest
 C A R
 W A S H
 In Town—**

*Where Our
 Customers
 Send Their
 Friends!*

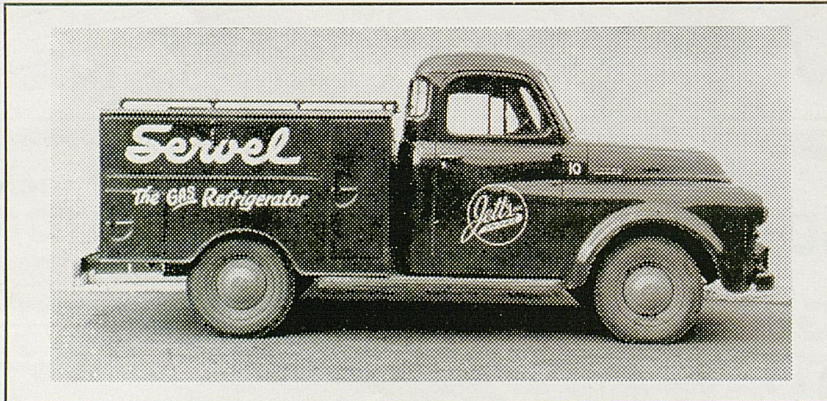
*Enjoy the Game...
 Enjoy the Finest...*



There's A Dixie
 Dealer Near
 You.

**IT'S JETCO APPLIANCE SERVICE
 THAT COUNTS**

Call
 5-0330
 For
 Appliance
 Service



Call
 5-0330
 For
 Appliance
 Service

Jetco Distributors

327 E. VINE ST.

DIAL 5-0330



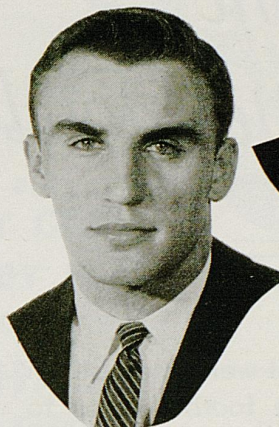
The Phoenix Hotel

"Lexington's Largest and Finest"

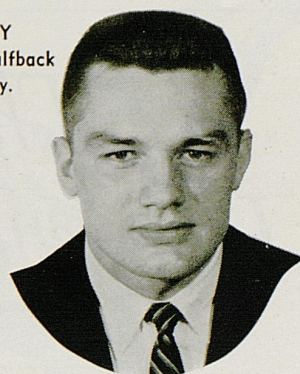
2 RESTAURANTS
COCKTAIL LOUNGES

Where Friends Delight To Meet

DICK MABRY
Sophomore — Halfback
Lexington, Ky.



JACK GALLAGHER
Sophomore — Halfback
Cumberland, Ky.

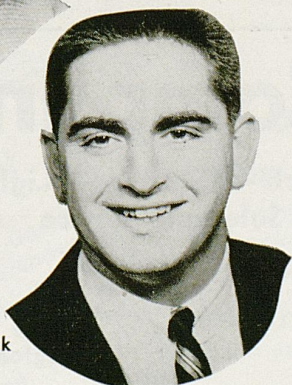
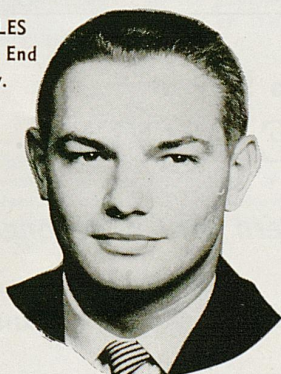


DAVE ALLEN
Sophomore — Halfback
Hamilton, Ohio

DICK CHARLES
Sophomore — End
Murray, Ky.



BOB BENNETT
Senior — Guard
Russell, Ky.



BOB BONICH
Sophomore — Fullback
Lynch, Ky.

Riddell

ATHLETIC EQUIPMENT

SAFE and SURE

BOTH HEAD and FOOT

- Safety Suspension Helmets
- Tubular Face Guards
- Football Shoes

Hunt's Athletic Goods Co., Inc.

Phone No. 104
MAYFIELD, KENTUCKY

"WE SHIP THE DAY YOU BUY"

FOR COMPLETE REPORTS ON THIS GAME AND OTHERS BEING PLAYED TODAY, READ THE SPORTS SECTION OF SUNDAY HERALD-LEADER

The Lafayette Hotel

Extends a cordial welcome and an invitation to the football fans to meet with us after the games. Renew old friendships, greet new friends, and enjoy the spirit of good fellowship that abounds.



MacGregor[®]
**Sports
Equipment**

HUNT'S ATHLETIC GOODS CO.
Phone No. 104
MAYFIELD, KENTUCKY
A MACGREGOR DISTRIBUTOR FOR THIRTY-FIVE YEARS

We Invite You To Stay at
TOWN HOUSE MOTEL

Lexington's Newest and Most Modern Air-Conditioned Motel

S. LIME AT ROSE

PHONE 3-5274

LEXINGTON, KY.

Taylor Tire Company

Incorporated

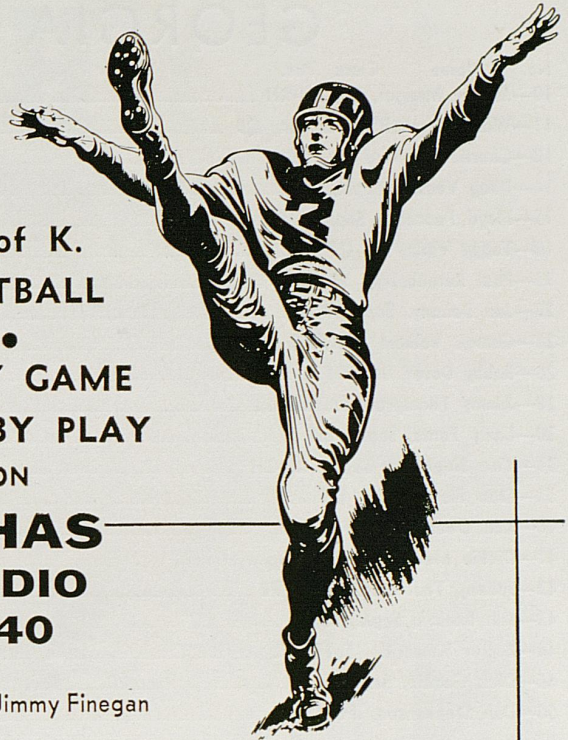
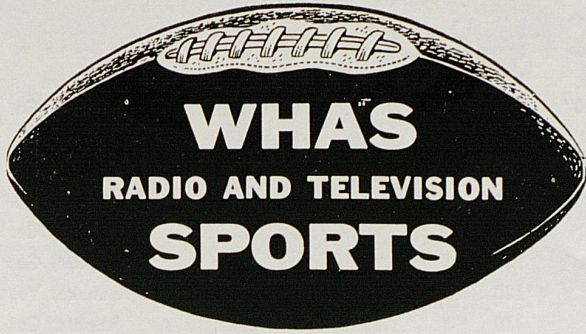
Tires — Batteries — Brakes — Clutch — Starter — Lights
Ignition — Wheel Alignment — Sales and Service

24 Hour  Service

"BUDGET TERMS"
Phone 2-7127

Vine at Southeastern

Lexington, Ky.

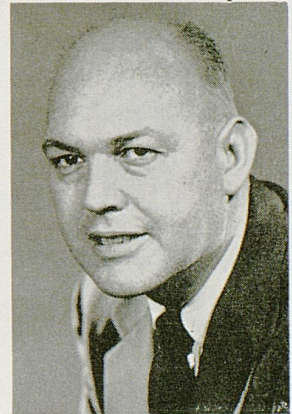


U. of K.
FOOTBALL
 •
EVERY GAME
PLAY BY PLAY
 ON
WHAS
RADIO
840



WHAS Sports Director Jimmy Finegan

Long-time Kentuckiana sports authority Jimmy Finegan began his career with the *Louisville Herald-Post* and *Louisville Times*. He joined the WHAS Sports Department in 1947, and just a year later became Sports Director. Jimmy's voice is familiar to radio listeners for his popular "Report on Sports" and "Kentuckiana Sports" on WHAS.



WHAS Sportscaster George Walsh

Sportscaster George Walsh is the area's leading play-by-play announcer, famous for his descriptions of outstanding local baseball, basketball and football games. Widely known as the originator of the National Football League's "Game of the Week" on TV, George is seen nightly on WHAS-TV's "Sportraits."

Other Sports Features on WHAS-Radio and TV

Kentucky Basketball
 This winter, George Walsh will broadcast forty-six outstanding basketball games by leading Kentucky teams — on WHAS-Radio!

RADIO

- REPORT ON SPORTS**
5:15 p.m. daily
- KENTUCKIANA SPORTS**
10:15 p.m. daily
- FOOTBALL SCOREBOARD**
5:45 p.m. Saturday

TV — Channel 11

- | | |
|---|--|
| SPORTRAITS
10:45 p.m. daily | |
| PRO FOOTBALL
Sunday afternoon | WRESTLING
10:55 p.m. Tuesday |
| FILM BOXING
11:00 p.m. Monday | BOWLING
11:00 p.m. Wednesday |

GEORGIA TECH ROSTER

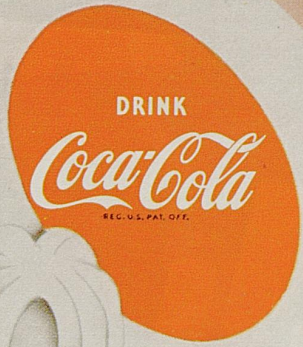
No.	Name	Class	Pos.	Age	Ht.	Wt.	Ltrs.	Hometown
10	Johnny Menger, Sr.		LH-RH	22	5'10"	156	3	Augusta, Ga.
11	Wade Mitchell*	(CC), Sr.	QB	21	6'4"	201	3	Atlanta, Ga.
12	Charlie Maynard, Jr.		QB	20	5'10"	170	0	Decatur, Ga.
14	Doug Veazey, Soph.		QB	19	6'	161	0	Rossville, Ga.
15	Floyd Faucette, Soph.		QB	19	6'	192	0	Brent, Ala.
16	Tippy Vann, Sr.		QB	21	5'10"	184	1	Rossville, Ga.
21	Paul Rotenberry,*	Sr.	LH	21	5'9"	180	2	Roanoke, Va.
22	Joe DeLany, Soph.		RH	20	6'	180	0	Atlanta, Ga.
24	George Volkert*	(CC), Sr.	RH	22	5'10"	189	3	Nashville, Tenn.
26	Bobby Dover, Jr.		RH	22	5'8"	172	0	Alcoa, Tenn.
28	Jimmy Thompson, Sr.		RH	21	5'5"	151	2	Bessemer, Ala.
30	Larry Fonts, Soph.		LH	19	5'11"	173	0	Miami, Fla.
31	Tim Singleton, Soph.		RH-LH	19	5'11"	170	0	Atlanta, Ga.
33	Stan Flowers, Jr.		LH	20	6'	197	1	Atlanta, Ga.
40	Ken Owen,**	Sr.	FB	21	5'11"	189	2	Salisbury, N. C.
41	Dickie Mattison,**	Sr.	FB	21	6'2"	197	2	Atlanta, Ga.
42	Johnny Thomason, Soph.		FB	20	5'9"	184	0	Thomasville, N. C.
43	Jim Benson, Soph.		FB	19	6'3"	215	0	N. Charleston, S. C.
44	Lester Simerville, Soph.		FB	20	5'11"	173	0	Atlanta, Ga.
46	Dick Gookin, Sr.		FB	21	5'8"	171	2	Nashville, Tenn.
50	Don Stephenson, Jr.		C	21	6'	190	1	Bessemer, Ala.
51	Foster Watkins, Soph.		C	19	6'2"	184	0	Columbus, Ga.
52	Buck Wiley, Sr.		C	22	6'	195	1	Spring Hill, Tenn.
55	Dave Robison, Soph.		C	19	6'	187	0	Lebanon, Tenn.
60	Dan Theodocion, Jr.		LG	23	6'	195	1	Smyrna, Ga.
61	Phillip Baum, Jr.		LG	20	6'	203	1	Memphis, Tenn.
62	Leon Tye, Soph.		LG-RG	19	6'1"	184	0	Americus, Ga.
63	Don Miller, Sr.		LG	22	6'3"	212	2	Kingsport, Tenn.
64	Allen Ecker,*	Sr.	RG	20	6'	197	2	Atlanta, Ga.
65	Jimmy Johnson, Sr.		LG	24	5'9"	190	2	Knoxville, Tenn.
66	Waldo Dodd, Sr.		LG	22	5'9"	180	0	Shannon, Ga.
67	Leon Askew, Jr.		RG	19	6'1"	204	1	Atlanta, Ga.
68	W. A. Glazier, Jr.		RG	21	5'10"	217	1	Newnan, Ga.
69	Ted Thomas, Soph.		RG	20	5'11"	199	0	Birmingham, Ala.
70	Urban Henry, Soph.		LT	21	6'4"	224	0	Berwick, La.
71	Ken Thrash,**	Sr.	RT	21	6'4"	200	1	Atlanta, Ga.
72	Toby Deese, Soph.		LT	19	6'1"	215	0	Talledega, Ala.
73	Ormand Anderson,**	Sr.	RT	26	6'1"	211	2	Chattanooga, Tenn.
74	John Lasch, Soph.		RT	19	6'	202	0	Clairton, Pa.
76	Carl Vereen,*	Sr.	LT	20	6'6"	231	3	Miami, Fla.
77	Frank Christy, Sr.		LT	21	6'1"	200	3	Bessemer, Ala.
79	Rausey Mason, Soph.		RT-LT	19	6'3"	208	0	Atlanta, Ga.
80	Tommy Rose,*	Jr.	LE	20	6'	185	1	Anniston, Ala.
81	Allen Lee, Jr.		RE	23	6'	191	0	Thomaston, Ga.
82	Wesley Gibbs, Soph.		LE	20	6'1"	198	0	Memphis, Tenn.
84	Robert Stone, Soph.		RE	19	6'	195	0	Chattanooga, Tenn.
85	Jack Rudolph, Soph.		LE	19	6'3"	201	0	Atlanta, Ga.
86	Ted Smith, Jr.		RE	20	6'1"	191	1	Cleveland, Tenn.
87	Jerry Nabors, Jr.		LE	21	6'1"	202	1	Talledega, Ala.
88	Paul Vickers, Jr.		RE	20	6'4"	182	1	Atlanta, Ga.
89	Don Ellis,*	Sr.	RE	21	6'1"	196	2	Dalton, Ga.

* Returning starters.

** Shared starting berth.

"THE OFFICIAL WATCH FOR TIMING THIS GAME IS LONGINES —
THE WORLD'S MOST HONORED WATCH"

REFRESH



- 1 Offside
- 2 Illegal procedure, position or substitution
- 3 Illegal motion
- 4 Illegal shift
- 5 Illegal return
- 6 Delay of game
- 7 Personal foul
- 8 Clipping
- 9 Roughing the kicker
- 10 Unsportsmanlike conduct
- 11 Illegal use of hands and arms
- 12 Intentional grounding
- 13 Illegally passing or handing ball forward
- 14 Forward pass or kick catching interference
- 15 Ineligible receiver downfield on pass
- 16 Ball illegally touched, kicked or batted
- 17 Incomplete forward pass, penalty declined, no play or no score
- 18 Crawling, helping runner or interlocked interference.
- 19 Ball dead
- 20 Touchdown or field goal
- 21 Safety
- 22 Time-out
- 23 First down
- 24 Ball ready for play
- 25 Start the clock

SEE PAGE 28 FOR PENALTIES



COCA-COLA BOTTLING WORKS OF LEXINGTON, KENTUCKY

Live Modern, Boy...Smoke **L&M!**



GEORGIA TECH

PROBABLE STARTING LINEUP

No.	Name	Position
80	TOMMY ROSE	LE
76	CARL VEREEN	LT
65	JIMMY JOHNSON	LG
50	DON STEPHENSON	C
64	ALLEN ECKER	RG
71	KEN THRASH	RT
89	DON ELLIS	RE
11	WADE MITCHELL	QB
21	PAUL ROTENBERRY	LH
24	GEORGE VOLKERT	RH
40	KEN OWEN	FB

THE YELLOW JACKET SQUAD

10 Menger, HB	43 Benson, FB	70 Henry, T
11 Mitchell, QB	44 Simerville, FB	71 Thrash, T
12 Maynard, QB	46 Gookin, FB	72 Deese, T
14 Veazey, QB	50 Stephenson, C	73 Anderson, T
15 Faucette, QB	51 Watkins, C	74 Lasch, T
16 Vann, QB	52 Wiley, C	76 Vereen, T
21 Rotenberry, HB	55 Robison, C	77 Christy, T
22 DeLany, HB	60 Theodocion, G	79 Mason, T
24 Volkert, HB	61 Baum, G	80 Rose, E
26 Dover, HB	62 Tye, G	81 Lee, E
28 Thompson, HB	63 Miller, G	82 Gibbs, E
30 Fonts, HB	64 Ecker, G	84 Stone, E
31 Singleton, HB	65 Johnson, G	85 Rudolph, E
33 Flowers, HB	66 Dodd, G	86 Smith, E
40 Owen, FB	67 Askew, G	87 Nabors, E
41 Mattison, FB	68 Glazier, G	88 Vickers, E
42 Thomason, FB	69 Thomas, G	89 Ellis, E

My Chesterfields *Satisfy* the Most!



KENTUCKY

PROBABLE STARTING LINEUP

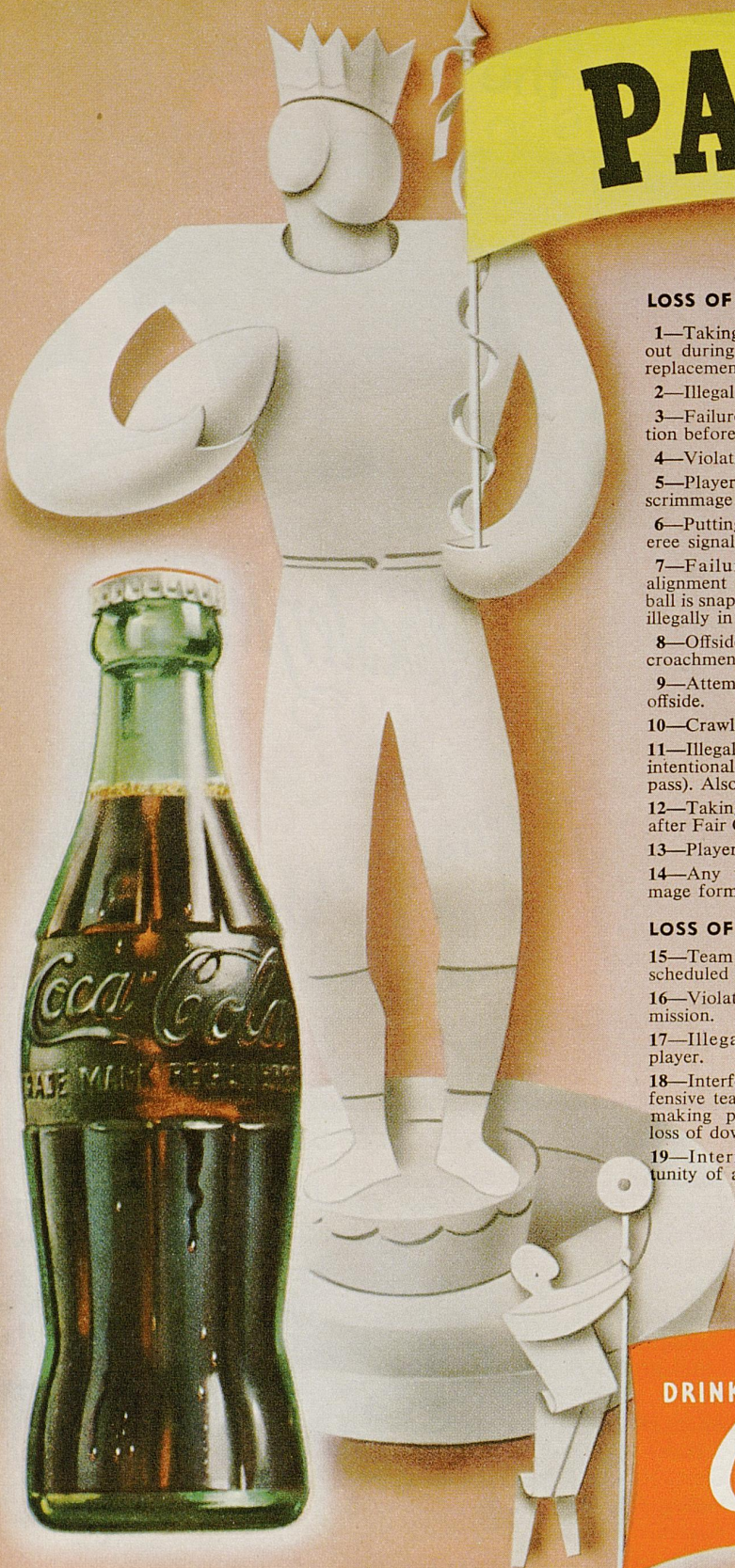
No.	Name	Position
83	ROGER PACK	LE
79	LOU MICHAELS	LT
62	DUKE CURNUTTE	LG
55	DAVE KUHN	C
64	ARCHIE POWERS	RG
70	J. T. FRANKENBERGER . .	RT
82	JIM URBANIAK	RE
19	DELMAR HUGHES	QB
32	DON NETOSKIE	LH
25	BILLY MITCHELL	RH
44	BOB DOUGHERTY	FB

11	Robertson, QB
16	Freeman, QB
17	Farley, QB
19	Hughes, QB
20	Selvy, HB
21	I. Curnutte, HB
22	Gallagher, HB
25	Mitchell, HB
26	Herzog, HB
27	Allen, HB
28	Cravens, HB
30	Clere, HB
31	Mabry, HB
32	Netoskie, HB
33	Goins, HB
40	Tribble, FB
41	Bonich, FB
42	Sloan, FB
43	Morris, FB

THE WILDCAT SQUAD

44	Dougherty, FB	69	Lococo, G
45	G. Miller, FB	70	Frankenberger, T
47	Kunkle, G	72	Bowie, T
50	Namath, C	73	Butler, T
51	Livings, C	74	Lindon, T
52	King, C	75	Roth, T
53	Lombard, C	76	Cambron, T
54	Waite, C	77	Ilari, T
55	Kuhn, C	78	Moore, T
56	Blocker, C	79	Michaels, T
60	J. Miller, G	81	Charles, E
61	Goble, G	82	Urbaniak, E
62	D. Curnutte, G	83	Pack, E
63	Ratcliffe, G	84	Shively, E
64	Powers, G	86	Martin, E
65	Cain, G	87	Cornelius, E
66	Buchanan, G	88	Harrington, E
67	Collier, G	89	Zampino, E
68	Bennett, G		

PAUSE



LOSS OF FIVE YARDS

- 1—Taking more than five times out during either half (except for replacement of injured player).
- 2—Illegal delay of game.
- 3—Failure to complete substitution before play starts.
- 4—Violation of kickoff formation.
- 5—Player out of bounds when scrimmage begins.
- 6—Putting ball in play before Referee signals "Ready-for-play".
- 7—Failure to maintain proper alignment of offensive team when ball is snapped. Also, backfield man illegally in motion.
- 8—Offside by either team or encroachment on neutral zone.
- 9—Attempt to draw opponents offside.
- 10—Crawling by runner.
- 11—Illegal forward pass (includes intentional grounding of forward pass). Also loss of down.
- 12—Taking more than two steps after Fair Catch is made.
- 13—Player on line receiving snap.
- 14—Any violation of the scrimmage formation.

LOSS OF FIFTEEN YARDS

- 15—Team not ready to play at scheduled time.
- 16—Violation of rules during intermission.
- 17—Illegal return of suspended player.
- 18—Interference by member of offensive team with defensive player making pass interception. (Also loss of down).
- 19—Interfering with the opportunity of a player of the receiving

PENALTIES

- team to catch a kick.
- 20—Illegal use of hands or arms by offensive player.
- 21—Tackling or blocking defensive player who has made fair catch.
- 22—Roughing the kicker.
- 23—Piling up, hurdling, clipping.
- 24—Tackling player out of bounds, or running into player obviously out of play.
- 25—Coaching from sidelines.
- 26—Failure to stop one full second following shift.
- 27—Defensive holding.
- 28—Invalid Signal for Fair Catch.

OTHER PENALTIES

- 29—Striking an opponent with fist, forearm, elbow or locked hands, kicking or kneeling — Mandatory disqualification of offending player plus loss of fifteen yards.
- 30—Foul within the one yard line — half the distance to the goal.
- 31—Interference by defensive team on forward pass — passing team's ball at spot of foul.
- 32—Forward pass being touched by ineligible receiver beyond the line of scrimmage—loss of fifteen yards from spot of preceding down and loss of a down.
- 33—Illegal touching of kicked ball within opponent's ten yard line — touchback.
- 34—Flagrantly rough play or unsportsmanlike conduct — Mandatory disqualification plus loss of fifteen yards.
- 35—Eligible pass receiver who goes out of bounds and later touches a forward pass — loss of down.

SEE PAGE 25 FOR OFFICIALS SIGNALS

DRINK

Coca-Cola

REG. U.S. PAT. OFF.

COPYRIGHT 1956, THE COCA-COLA COMPANY

COCA-COLA BOTTLING WORKS OF LEXINGTON, KENTUCKY

UNIVERSITY OF KENTUCKY ROSTER

No.	Name	Class	Pos.	Age	Ht.	Wt.	Ltrs.	Hometown	High School	Coach
11	Kenny Robertson, Jr.	QB		20	5'11"	189	1	West Palm Beach, Fla.	Palm Beach	H. M. Wittington
16	Jack Freeman, Sr.	QB		22	5'10"	160	0	Danville, Ky.	Danville	Pat James
17	Bill Farley, Sr.	QB		25	5'11"	177	2	Charleston, W. Va.	Stonewall Jackson	Russ Parsons
19	Delmar Hughes, Sr.	QB		21	6'1"	188	3	Prestonsburg, Ky.	Prestonsburg	Doc Ferrell
20	Edd Selvy, Soph.	HB		19	5'11"	182	0	Corbin, Ky.	Corbin	Bill Tucker
21	Ivan Curnutte, Jr.	HB		21	5'6"	165	0	Ashland, Ky.	Ashland	Charles Eblen
22	Jack Gallagher, Soph.	HB		20	5'10"	187	0	Cumberland, Ky.	Cumberland	Roy King
25	Billy Mitchell, Sr.	HB		21	6'2"	189	2	Georgetown, Ky.	Garth	Tom Green
26	Woody Herzog, Jr.	HB		20	5'11"	192	1	Hamilton, Ohio	Hamilton	Chuck Thackara
27	Dave Allen, Soph.	HB		19	5'11"	179	0	Hamilton, Ohio	Hamilton	Chuck Thackara
28	Bob Cravens, Soph.	HB		19	5'10"	191	0	Owensboro, Ky.	Owensboro	Joe O. Brown
30	Don Clere, Soph.	HB		20	5'11"	187	0	Ashland, Ky.	Ashland	Charlie Eblen
31	Dick Mabry, Soph.	HB		20	5'10"	179	0	Lexington, Ky.	Bullis M.A.	Harry Demming
32	Don Netoskie, Sr.	HB		22	5'11"	187	3	Martinsburg, W. Va.	Martinsburg	J. T. Cobourn
33	Carl Goins, Soph.	HB		19	6'	193	0	Madisonville, Ky.	Madisonville	Moose Zachem
40	Cliff Tribble, Soph.	FB		19	5'10"	184	0	Lebanon, Tenn.	Lebanon	Jim Babbs
41	Bob Bonich, Soph.	FB		20	6'	191	0	Lynch, Ky.	Lynch	Sam Potter
42	Paul Sloan, Soph.	FB		19	5'11"	190	0	Catlettsburg, Ky.	Catlettsburg	Charlie Snyder
43	Waymond Morris, Soph.	FB		20	5'10"	191	0	Owensboro, Ky.	Owensboro	Joe O. Brown
44	Bob Dougherty, Sr.	FB		24	6'	212	1	Bellevue, Ky.	Bellevue	Ben Flora
45	Garland Miller, Soph.	FB		20	5'10"	209	0	Louisville, Ky.	Southern	Mike Dubick
47	Dennis Kunkle, Soph.	G		19	5'11"	199	0	Beaver, Pa.	Beaver	Pete Kane
50	Frank Namath, Soph.	C		18	6'	203	0	Beaver Falls, Pa.	Beaver Falls	Schacheren Leland
51	Bill Livings, Soph.	C		20	6'2"	201	0	Montgomery, Ala.	Sydney Lanier	Bill Moseley
52	Lawson King, Jr.	C		20	5'11"	189	1	Belfry, Ky.	Belfry	Guy Patterson
53	Dick Lombard, Soph.	C		19	6'2"	202	0	Pittsburgh, Pa.	Westinghouse	Mike Dimpero
54	Dale Waite, Jr.	C		22	6'1"	194	0	Ludlow, Ky.	Ludlow	Paul Adams
55	Dave Kuhn, Sr.	C		20	6'2"	216	3	Louisville, Ky.	Male	Nick Denes
56	Dick Blocker, Soph.	C		19	6'2"	209	0	Louisville, Ky.	St. Xavier	John Meihaus
60	Jim Miller, Soph.	G		23	6'1"	190	0	Madisonville, Ky.	Madisonville	Moose Zachem
61	John Goble, Jr.	G		21	6'2"	198	0	Prestonsburg, Ky.	Prestonsburg	Doc Ferrell
62	Duke Curnutte, Sr.	G		23	6'	209	3	Ashland, Ky.	Ashland	Charles Eblen
63	Clark Ratcliffe, Jr.	G		24	5'11"	204	1	Pikeville, Ky.	Pikeville	Clayton Powers
64	Archie Powers, Jr.	G		20	5'11"	207	1	Williamsburg, Ky.	Williamsburg	Jack Miller
65	Ronnie Cain, Soph.	G		19	6'	203	0	Cumberland, Ky.	Cumberland	Roy King
66	Don Buchanan, Soph.	G		21	5'11"	206	0	Barbourville, Ky.	Barbourville	Herb Tye
67	Bob Collier, Jr.	G		20	6'1"	209	1	Jenkins, Ky.	Jenkins	Jim MacKenzie
68	Bob Bennett, Sr.	G		20	5'11"	208	2	Russell, Ky.	Russell	Fred Johnson
69	Vince Lococo, Soph.	G		19	5'11"	213	0	Louisville, Ky.	Flaget	Paul Miller
70	J. T. Frankenberger, Sr.	T		21	6'4"	226	2	Louisville, Ky.	Flaget	Paul Miller
72	Jim Bowie, Soph.	T		22	6'4"	204	0	Detroit, Mich.	M.M.I.	Capt. J. Reese
73	Jack Butler, Sr.	T		22	6'4"	220	2	Tompkinsville, Ky.	Tompkinsville	Darrell Carter
74	Bob Lindon, Soph.	T		21	6'	221	0	Hazard, Ky.	Hazard	Jim Caudill
75	Paul Roth, Soph.	T		19	6'3"	215	0	Chicago, Ill.	Lakeview	Ray Jacobson
76	Jim Cambron, Soph.	T		19	6'2"	224	0	Louisville, Ky.	Flaget	Paul Miller
77	John Hari, Jr.	T		23	6'	207	1	Louisville, Ky.	Flaget	Paul Miller
78	Don Moore, Soph.	T		20	6'1"	198	0	Owensboro, Ky.	Owensboro	Joe O. Brown
79	Lou Michaels, Jr.	T		21	6'1"	229	1	Swoverville, Pa.	Staunton M.A.	Albert McCue
81	Dick Charles, Soph.	E		20	6'	191	0	Murray, Ky.	Murray	Ty Holland
82	Jim Urbaniak, Jr.	E		20	6'	193	1	Fairmont, W. Va.	Fairmont	Paul Dawson
83	Roger Pack, Sr.	E		21	6'2"	202	2	Jenkins, Ky.	Jenkins	Delmas Freeman
84	Doug Shively, Soph.	E		19	6'2"	197	0	Lexington, Ky.	Lafayette	Tony Salvato
86	Jack Martin, Soph.	E		20	5'11"	196	0	Corbin, Ky.	Corbin	Bill Conde
87	John Cornelius, Jr.	E		20	6'4"	206	1	Bethesda, Md.	Chevy Chase	John Sandusky
88	Roger Harrington, Sr.	E		23	5'9"	163	0	Louisville, Ky.	Manual	Mike Basrak
89	Al Zampino, Sr.	E		25	6'1"	192	3	Philadelphia, Pa.	Bok Tech	Max Siani

FOR COMPLETE REPORTS ON THIS GAME AND OTHERS BEING PLAYED TODAY, READ THE SPORTS SECTION OF SUNDAY HERALD-LEADER

HERE'S A SMART PLAY!

WHILE AT THE BALL GAME

"LEAVE YOUR PARKING
PROBLEM AT
DICK WEBB'S"

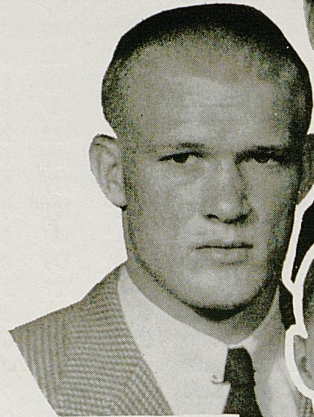
**MAMMOTH
GARAGE**

MAIN & ROSE
PHONE 4-7908

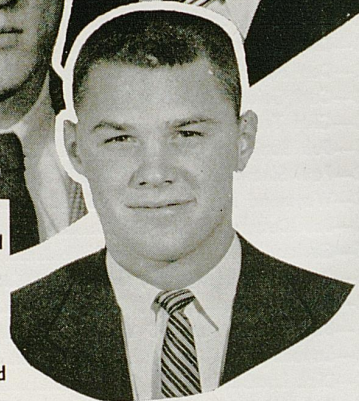
**LEXINGTON'S
NEWEST, BIGGEST**

Parking Garage

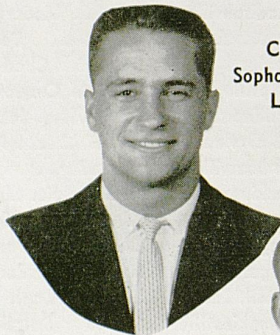
DON BUCHANNAN
Sophomore — Guard
Barbourville, Ky.



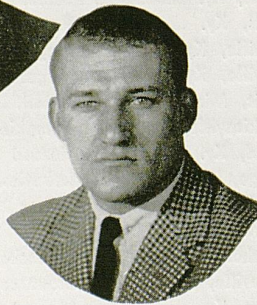
JOHN GOBLE
Sophomore — Guard
Prestonsburg, Ky.



DOUG SHIVELY
Sophomore — End
Lexington, Ky.



CLIFF TRIBBLE
Sophomore — Fullback
Lebanon, Tenn.



BOB CRAVENS
Sophomore — Halfback
Owensboro, Ky.



EDD SELVY
Sophomore — Halfback
Corbin, Ky.

Perry Lumber Co.

"Contractors & Builders"

- Lumber
- Builders Supplies
- Roofing
- Mill Work
- Hardware
- Paint
- Sporting Goods
- Appliances

— Easy Parking —

246 WALTON AVE.

LEXINGTON, KY.

WV LK *Dial* 590

originating station
All U of K GAMES on



PLAY-BY-PLAY WITH
Claude Sullivan

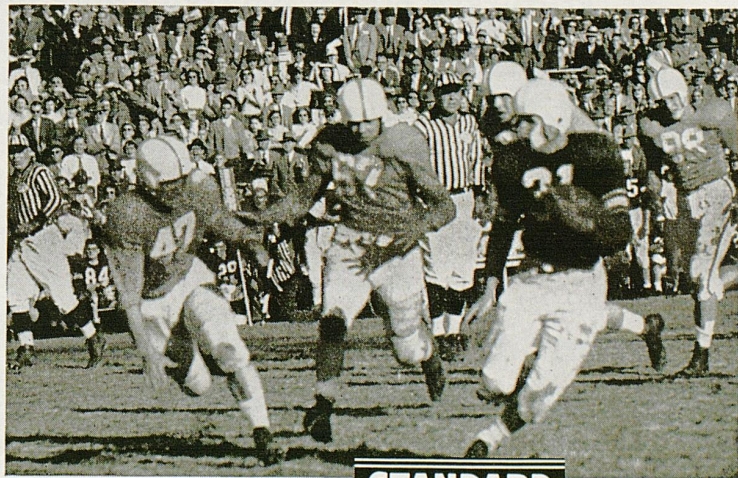
FOOTBALL NETWORK

CENTRAL KENTUCKY'S SPORTS STATION

Follow U. of K. with Claude Sullivan
On the Standard Oil Network



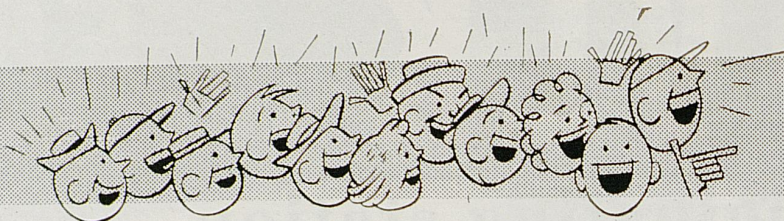
- | | |
|------------------------------|-----------------------------|
| WKCT
BOWLING GREEN | WCTT
CORBIN |
| WFKY
FRANKFORT | WVLK
LEXINGTON |
| WAVE
LOUISVILLE | WVJS
OWENSBURG |
| WPAD
PADUCAH | WPRT
PRESTONSBURG |



Brought by your



Dealer



CHEER...from your car or easy chair

Be sure to see all Kentucky "Wildcat" football games this fall that you possibly can . . . but if you can't cheer from the stadium, you can listen to thrilling play-by-play radio accounts of Kentucky's games over more than 40 local Kentucky radio stations.



SPONSORED BY

ASHLAND OIL & REFINING COMPANY
and AETNA OIL COMPANY



Again, For The 24th STRAIGHT YEAR!

ALL OF THE U. OF K.'S FOOTBALL AND BASKETBALL GAMES
ON THE AIR OVER

WLAP

— KENTUCKY'S OLDEST AND LEXINGTON'S MOST POWERFUL —

And Again — For The 8th STRAIGHT YEAR!

Originating the Ashland-Aetna 36-Station Hook-up serving you,
at home, over your own station on

THE SOUTH'S GREATEST SPORTS NETWORK

Follow The "Cats" Wherever They Go!

In person, if possible, if not, keep tuned to . . .

— 630 ON YOUR DIAL —

Co-Sponsored on WLAP By —

BALL & CO. and YORK-LEXINGTON CO.

SCORES OVER STOLL FIELD PUBLIC-ADDRESS SYSTEM COME TO
YOU THROUGH THE COURTESY OF THE LEXINGTON NEWSPAPERS

GLOZIER
G

JOHNSON
G

DODD
G



ROSE
E

VEREEN
T

CHRISTY
T

ECKER
G

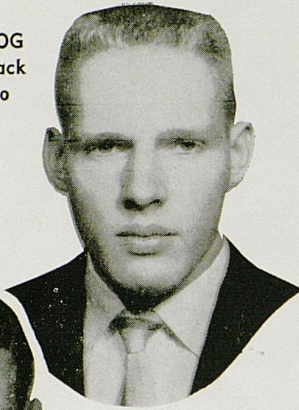
The YELLOW JACKETS

VANN
QB

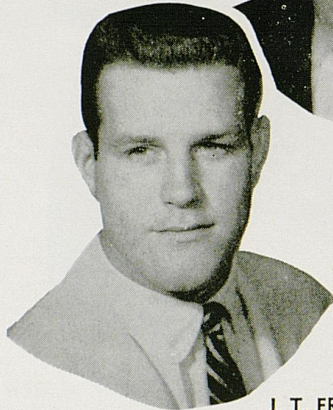
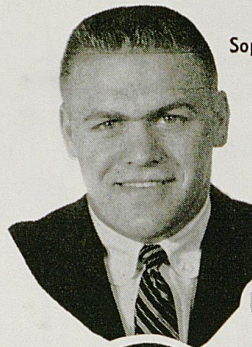
NOBORS
E

CO-CAPTAINS
MITCHELL VOLKERT

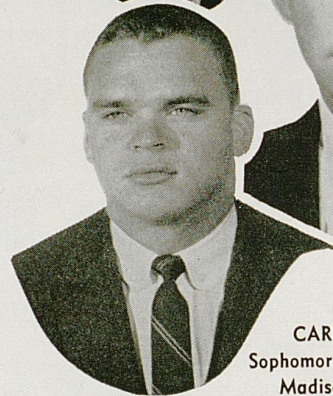
WOODY HERZOG
Junior — Halfback
Hamilton, Ohio



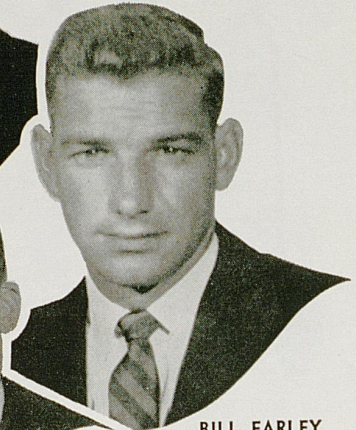
PAUL SLOAN
Sophomore — Fullback
Cattlettsburg, Ky.



J. T. FRANKENBERGER
Senior — Tackle
Louisville, Ky.



CARL GOINS
Sophomore — Halfback
Madisonville, Ky.



BILL FARLEY
Senior — Quarterback
Charleston, W. Va.

Enjoy Your Lexington Visit
At The

Ranch Motel

EASTERN CITY LIMITS — U. S. 60

1133 Winchester Road

Lexington, Kentucky

Phone 2-0777

Exclusive

LUSTERWAY
DRY Drycleaning
Guarantees cleaner,
brighter, and softer
garments.

BECKER

LAUNDERERS CLEANERS
5 Convenient Locations

LUX
LAUNDRY
Everything washed in
gentle Lux Flakes.

Exclusive

NOBODY can Launder a Shirt like BECKER

SCORES OVER STOLL FIELD PUBLIC-ADDRESS SYSTEM COME TO
YOU THROUGH THE COURTESY OF THE LEXINGTON NEWSPAPERS

Laundry

Dry Cleaning

DeBoor

One Day Service Monday thru Friday

No Added Cost

15 Per Cent Discount

and

Curb Service

AT

**265 EUCLID AVE.
PHONE 3-0235**

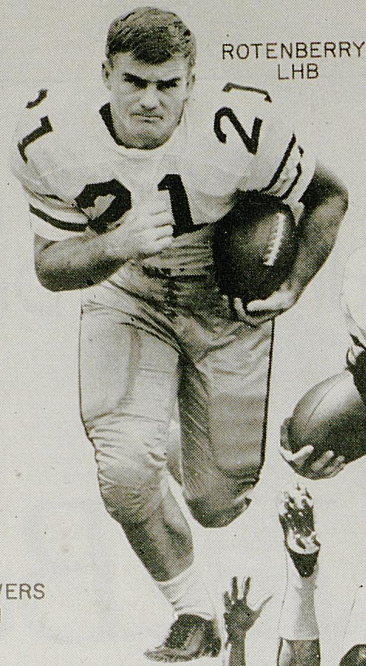
**880 E. HIGH ST.
PHONE 2-7046**

**1966 HARRODSBURG PIKE
PHONE 5-1488**

OWEN
F



FLOWERS
H



ROTENBERRY
LHB



THOMPSON
H

The YELLOW JACKETS

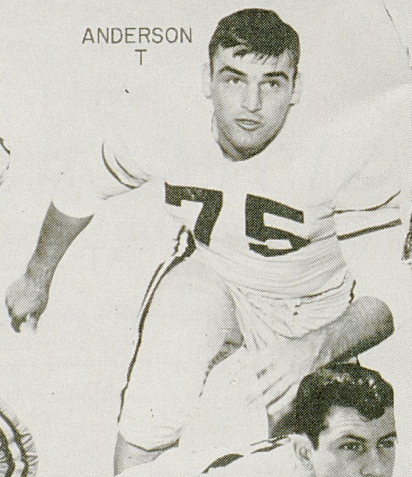
MATTISON
F



ANDERSON
T



MENGER
HB



THRASH
T



ELLIS
E



STEPHENSON
C



SMITH
E

PURCELL'S

Central Kentucky's Largest Department Store

... Your ONLY One Stop Shopping Center

EVERYTHING UNDER ONE ROOF:

- Courtesy
- Dependability
- Economy

322 WEST MAIN STREET, LEXINGTON, KENTUCKY



*Winning
More
Friends
Every
Season!*



MEMBER FEDERAL DEPOSIT INSURANCE CORPORATION

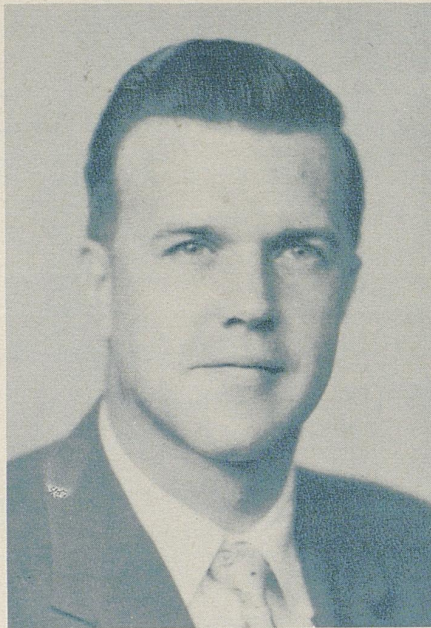
MEMBER FEDERAL RESERVE SYSTEM

**FIRST NATIONAL BANK
and Trust Company**

OUR 92nd YEAR OF SERVICE IN THE BLUE GRASS AREA

FOR COMPLETE REPORTS ON THIS GAME AND OTHERS BEING PLAYED
TODAY, READ THE SPORTS SECTION OF SUNDAY HERALD-LEADER

*We Serve You Even Better
in our 10th year.*



FRANK PURDY
General Manager

*In the same convenient location
155 E. High St.*

With convenient parking

Behind the Kentuckian Hotel

FIFE, COOKE & PURDY
General Insurance

Dial: 2-9966
or: 4-0919

"Honestly, it's the best policy"

In the Kentuckian
Hotel Building

COLLEGE OF
Agriculture and Home Economics

Success in farming and farm living requires not only a love of the soil but special knowledge and training. In the classrooms and laboratories of the College of Agriculture and Home Economics, students learn fundamental principles which underlie the many activities of farm and home. Here they are trained for leadership in their chosen fields. Most college students today prefer a college and a curriculum which will qualify them for interesting work and at the same time permit them to become familiar with the liberal arts and sciences. The UK College of Agriculture and Home Economics answers this objective. Its graduates are accepted wherever there is need for persons trained in agriculture and home economics, and they are in demand throughout the country in industry, in business, and in various lines of institutional and governmental work.

AGRICULTURAL EXPERIMENT STATION BUILDING



Buy with Confidence at . . .



Next to Union Station in Lexington



Do You
Motor?
Travel?

Attend football
games and other
athletic events?
Then examine a

Bausch & Lomb Binocular at Tinder-Kraus-Tinder. Note its great light gathering power, wide field, ease of use, and rugged construction. Enthusiastically recommended by sportsmen, Army and Navy Officers, aviators and other users as "The World's Best By Any Test."



Tinder-Kraus-Tinder
Opticians—Photographic Supplies

145 N. Upper Street

Lexington

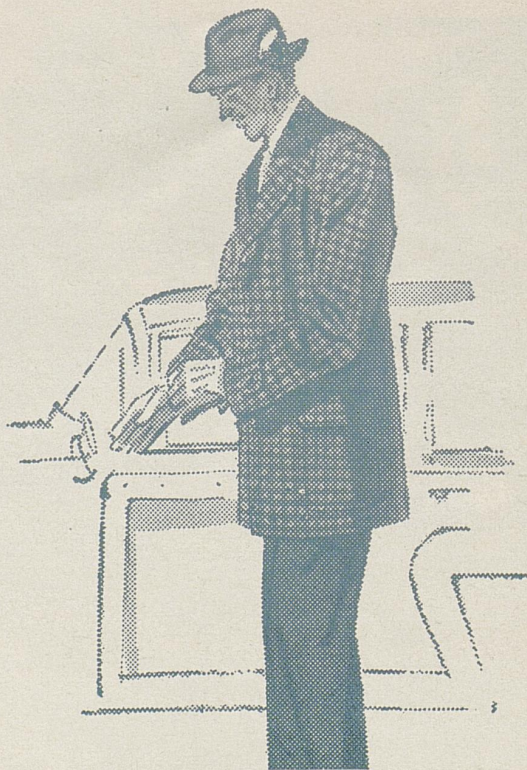
New Fashion Note for Fall

SUBURBAN COATS

Enjoy new comfort in the stadium . . . new freedom in motoring . . . with a Suburban Coat. Ideal for all spectator-sports, this new fashion goes just as far as your finger tips. See it at Lexington's leading stores .

The Association Of Men's Stores Of Lexington

ANGELUCCI & RINGO	KAUFMAN'S
BOMANZI	MAXSON'S
GRAVES, COX & CO.	MEYERS



SCORES OVER STOLL FIELD PUBLIC-ADDRESS SYSTEM COME TO YOU THROUGH THE COURTESY OF THE LEXINGTON NEWSPAPERS

THE STORE WHERE QUALITY LEADS

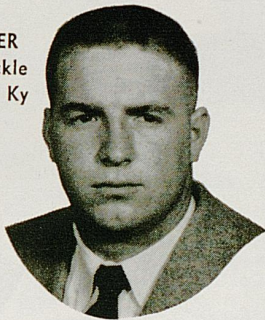
Standard furniture company

221 East Main Street

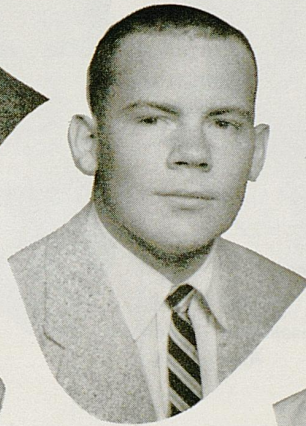
Lexington, Kentucky

PRICES TO FIT EVERY BUDGET

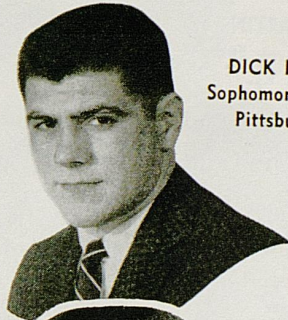
JACK BUTLER
Senior — Tackle
Tompkinsville, Ky



JIM URBANIAK
Junior — End
Fairmont, W. Va.

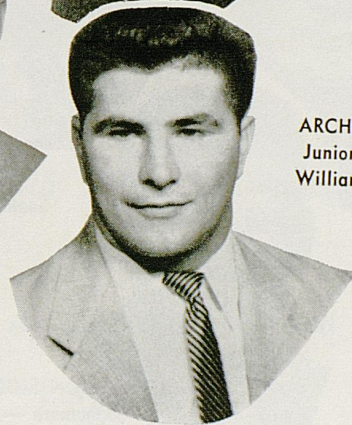


DICK LOMBARD
Sophomore — Center
Pittsburgh, Pa.

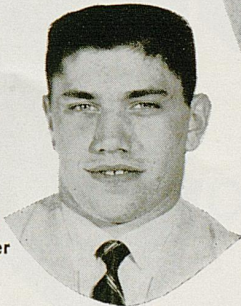


BILL LIVINGS
Sophomore — Center
Montgomery, Ala.

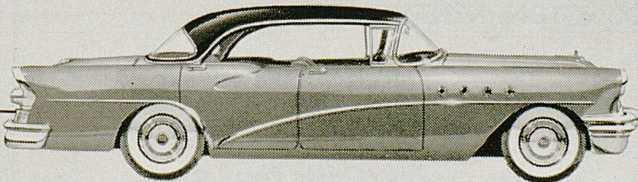
ARCHIE POWERS
Junior — Guard
Williamsburg, Ky.



FRANK NAMATH
Sophomore — Center
Beaver Falls, Pa.



Buick's new kind of "hardtop" — CENTURY 4-DOOR RIVIERA



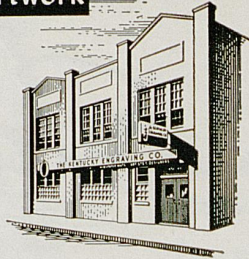
It's another score for BUICK
—the thrill of the year

SHUG GLENN BUICK, INC.
116 E. High Street
LEXINGTON, KENTUCKY

FOR COMPLETE REPORTS ON THIS GAME AND OTHERS BEING PLAYED
TODAY, READ THE SPORTS SECTION OF SUNDAY HERALD-LEADER

Photo-Engravings--Multilith and Offset Plates--Mats--Artwork

Our new plant offers the largest and finest facilities in the Blue Grass for the production of all types of newspaper and fine screen photo-engraving, lithographic plates, newspaper mats and artwork. We would appreciate an opportunity to prove to your firm the higher quality of our work and service. Phone or write.

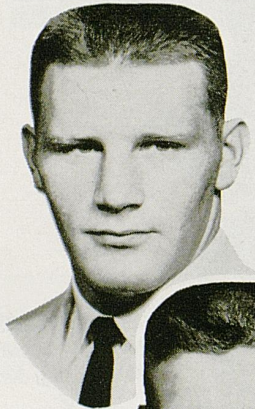


The Kentucky Engraving Co.

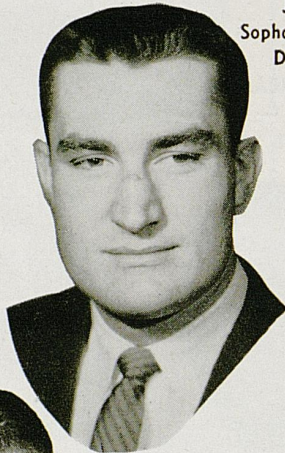
430 West Short Street

Lexington, Ky.

JACK MARTIN
Sophomore — End
Corbin, Ky.



JIM BOWIE
Sophomore — Tackle
Detroit, Mich.



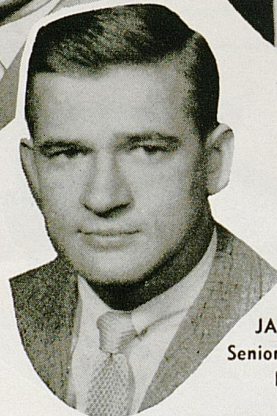
DON CLERE
Sophomore — Halfback
Ashland, Ky.



DALE WAITE
Junior — Center
Ludlow, Ky.



DON MOORE
Sophomore — Tackle
Owensboro, Ky.



JACK FREEMAN
Senior — Quarterback
Danville, Ky.

HARRY ALDRIDGE MOTORS

AND LEXINGTON AUTO-BODY

133 MIDLAND

PHONE 3-3163

LEXINGTON, KENTUCKY

Lexington's

HUDSON DEALER

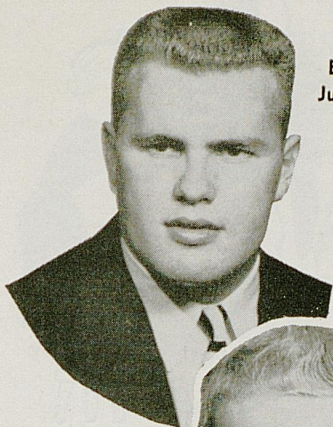
Featuring The
ALL NEW RAMBLER

YOUR AUTHORIZED

Jaguar Dealer

Also Other Popular
SPORTS CARS

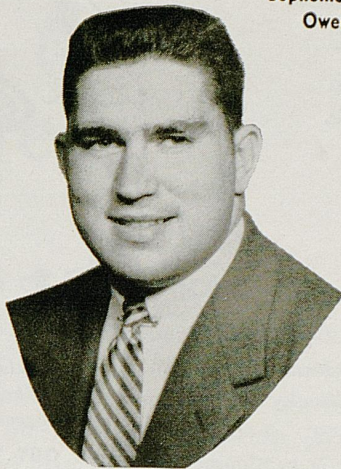
SCORES OVER STOLL FIELD PUBLIC-ADDRESS SYSTEM COME TO YOU THROUGH THE COURTESY OF THE LEXINGTON NEWSPAPERS



BOB COLLIER
Junior — Guard
Jenkins, Ky.

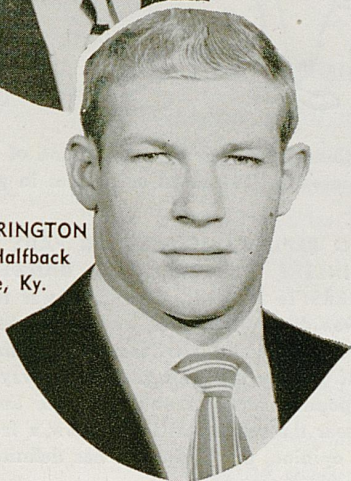


WAYMOND MORRIS
Sophomore — Fullback
Owensboro, Ky.



BOB LINDON
Sophomore — Tackle
Hazard, Ky.

ROGER HARRINGTON
Senior — Halfback
Louisville, Ky.



KENNY ROBERTSON
Junior — Quarterback
West Palm Beach, Fla.



Hargett Construction Co.

INCORPORATED

General Contractors

Phone 2-2992

113 Walton Avenue

Lexington, Ky.

ONE STOP SHOPPING

With

A Lunch Counter and

Large Restaurant

McCRORY'S

5 - 10 - 25

STORE

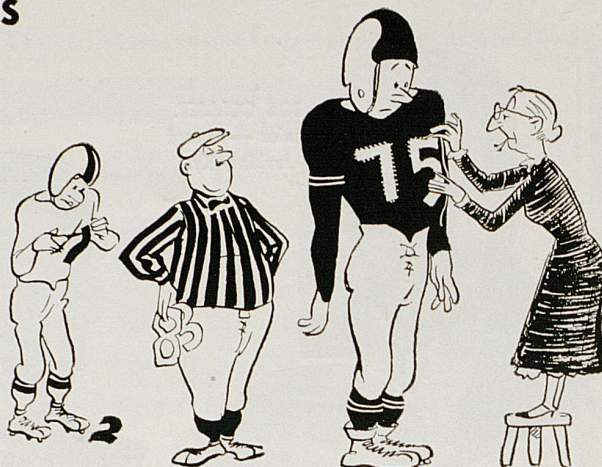
Phoenix Hotel Building

Lexington, Kentucky

FOR COMPLETE REPORTS ON THIS GAME AND OTHERS BEING PLAYED
TODAY, READ THE SPORTS SECTION OF SUNDAY HERALD-LEADER

1956 FOOTBALL RULES CHANGES

By Charles W. Tucker, Jr.



We are happy to report that if you understood the football rules last year you will have no difficulty with them this year.

The Rules Committee of the N.C.A.A. is continuing its policy of holding changes to a minimum and constantly working toward standardization of the Rules for the best interests of all concerned.

There are a number of refinements and editorial changes for the sake of clarification, but very few changes of major significance. One of the principal changes this year is to reinstate the rule covering eligible pass receivers to its former status. Last year, if a center, guard or tackle was in an end position, he was not eligible to receive a forward pass when a teammate was behind him or outside of him. This year the rule says, "Any player in an end position on the line of scrimmage may receive a forward pass", so we are right back where we started.

Other changes are as follows:

GAME CLOCK STARTS ON KICK-OFF WHEN BALL IS LEGALLY TOUCHED: In the past the game clock has always started when the kicker's foot made contact with the ball. Now the game clock will not start until the ball has been legally touched.

In the past it would have been possible for the kicking team in the closing seconds of the game with a small lead to protect to run the game clock out by kicking the ball out of bounds or by illegally recovering it before the defensive team had a chance to get possession of the ball. This change will eliminate the possibility of the kicking team taking advantage of such a situation in the future.

CLIPPING AND BLOCKING REDEFINED: Clipping was formerly defined as, "blocking an opponent, other than the runner, from behind." This year clipping is defined as, "running or diving into the back, or throwing the body across the back of the leg or legs of an opponent not carrying the ball."

Blocking was formerly defined as, "obstructing a player with the body." This year blocking is defined as, "obstructing an opponent by contacting him with any part of the blocker's body."

ASSISTING RUNNER IN GAINING FORWARD PROGRESS REDEFINED. For many years, there has been a 15 yard penalty for a teammate helping the ball carrier by pulling, pushing, or lifting him from the ground. This rule has been

further strengthened this year by the addition of the phrase, "or charging into the Runner to assist him in gaining forward progress."

TIME OUT TO REPLACE JERSEYS OR PADS CHARGED TO TEAM UNLESS EQUIPMENT IS DANGEROUS TO OTHER PLAYERS: In the past, if a jersey was torn so that the number was illegible or pads were not held in proper position, the referee could give that team a time-out and charge himself. Under this ruling the tear-away jersey became a very popular item for obtaining free time-outs. No more! This year the referee will not allow a free time-out unless, in his opinion, the equipment has definitely become dangerous to other players.

PROCEDURE FOR GETTING A KICKING TEE ONTO THE FIELD: It has always been a moot question as to whether or not it was "coaching from the sidelines" when a kicking tee was thrown onto the field. The rules make it very clear this year as to what the procedure should be. If the game clock is stopped and a tee is thrown onto the field, this is legal. If the game clock is running and a tee is thrown onto the field this will be considered as "coaching from the sidelines" unless an official is notified that a tee was being requested.

LEGAL USE OF HANDS OR ARMS AFTER A FORWARD PASS HAS BEEN TOUCHED: When a legal forward pass has been thrown, defensive players have the same rights as eligible offensive players to catch the ball, but no player shall deliberately interfere with the other's opportunity to catch the ball. Once the ball has been touched, the complexion of things changes and any eligible receiver who has a reasonable chance to make the catch may use his hands or arms to push an opponent out of the way.

NUMBERING SYSTEM: The Rules Committee has further recommended the following numbering of players for the convenience of spectators, coaches and officials:

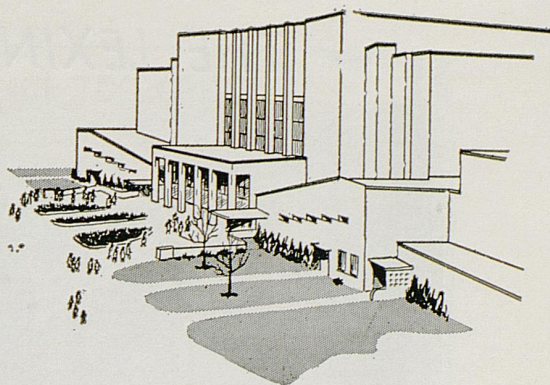
Backs	10-49
Centers	50-59
Guards	60-69
Tackles	70-79
Ends	80-89

Such numbering of players makes it much easier to follow the game.

RUBBER COVERED FOOTBALL: For several years the Rules Committee has permitted the use of a rubber covered football provided it was mutually agreed upon by the two contesting teams. This year either team may elect to use a rubber covered ball while on the offense.

THE UNIVERSITY OF KENTUCKY

Looks to the Future . . .



The Margin of Excellence

A beautiful modern campus, a faculty including eminent scholars, students who meet high scholastic standards—all these are sources of special pride to UK Alumni but their very being places squarely upon us a responsibility which we can meet with equal pride. We share more than anyone else in the services and growing prestige of the University of Kentucky. Surely it is more than reasonable that we share worthily in the material support of her development.

Looking Ahead

The University is entering an era of great potential; a new medical school is being planned; other developments costing \$18,000,000 over the next ten years are being projected. The new administration, headed by President Frank G. Dickey, faces the challenge—before its tenure ends—of a 15,000 enrollment and a development program costing more than \$50,000,000. If the challenge is to be met, the staff and facilities will have to be doubled and tripled to accommodate increasing enrollment and expanding activities. How much of the potential becomes reality will depend much upon the vision, imagination, and devotion of the Alumni and friends of the University.



Put UK In Your Budget Now

You cannot have a great state without a great state university. . . . Support UK by an annual gift of at least five dollars. . . . The Alumni Association is dedicating its annual "Alumni Roll Call" to newly-elected President Frank G. Dickey. . . . Your active membership in the Alumni Association this year will be your way of welcoming President Dickey and evidence your faith in his vigorous leadership.

Already at the threshold of greatness, your university needs your help now as it strives for a better Kentucky!

Alumni	Joint membership	Tax
Membership \$5.00	(Husband-wife) \$7.50	Deductible

MAKE CHECKS PAYABLE TO UK ALUMNI FUND

UNIVERSITY OF KENTUCKY ALUMNI ASSOCIATION — STUDENT UNION BUILDING

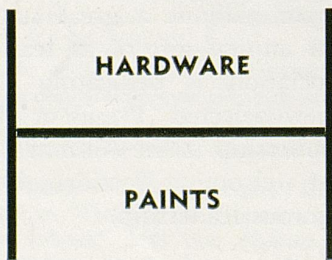
— THE LEXINGTON SALESMEN CLUB —



FRONT ROW: (left to right) Andrew A. Brown, Roland Worth, Ed Inman, Oscar Langley, Ray Frazier, Burkitt Stephenson, Charles Thompson, Jack Mullins, Bill Kleiser, Russ Graves, George Scott, Gordon Tiedt, James Bowman, Arthur M. Butler, Ed Abraham, Ralph Farmer.
SECOND ROW: Joe Hanson, D. S. Holman, John Warington, L. D. Nickles, Henry Schwabe, George Daniels, Bob Bradley, Frank Horak, Buford Halfhill, Glenn Riggs, Morton Petrie, George Stanfill, Bill Grall.
THIRD ROW: Ralph Karsner, Gatton Jones, Marion Prater, Ed Kellermann, Terry Grissom, Jim Mundell, Ken Lambert, Bob Crabtree, Joe Papania, Earl Crouch, J. T. Reynolds, Ellery Chase, C. V. Rose, Ed Lancaster, Dick Reddick, George Horine.
FOURTH ROW: Wes Mastin, Ed Miller, Howard Isaacs, Charles Seeberger, Glenwood Webb, Jim Beard, Barney Stall, Thurman Measel, Mark Sharff, Paul Bryant, Charles White, Ralph Rambicure, Bob Swope, E. H. Porter, George Metcalfe, Russ Campbell, Norman Burke.

INTERNATIONAL HARVESTER

Parts — Service



ECTON SUPPLY CO., Inc.

1060 W. High St. Phone 3-5727
Lexington, Ky.

Leave Your Parking Problems

At Home

RIDE THE BUS
TO THE GAME



Lexington Railway System, Inc.

SCORES OVER STOLL FIELD PUBLIC-ADDRESS SYSTEM COME TO
YOU THROUGH THE COURTESY OF THE LEXINGTON NEWSPAPERS

R

NO ORDER TOO SMALL — NO DISTANCE TOO GREAT

R

— AT —

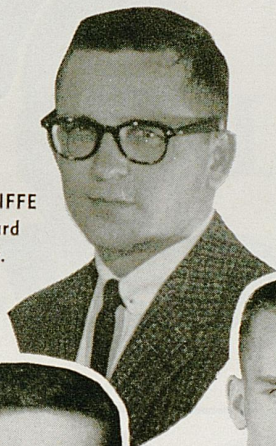
SAGESER

Pharmacy
Short and Mill
4-2662

Apothecary
Opposite Good Samaritan
4-9660

Both Locations — A Complete Drug Store

CLARK RATCLIFFE
Junior — Guard
Pikeville, Ky.



AL ZAMPINO
Senior — End
Philadelphia, Pa.



IVAN CURNUTTE
Junior — Halfback
Ashland, Ky.



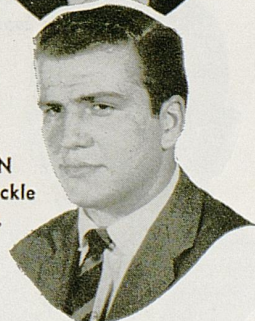
JIM MILLER
Sophomore — Guard
Madisonville, Ky.



PAUL ROTH
Sophomore — Tackle
Chicago, Ill.



JIM CAMBRON
Sophomore — Tackle
Louisville, Ky.



Lexington Yellow Cab Co.

Inc.

ALL
RADIO CABS

Dial 2-2230

ALL
RADIO CABS

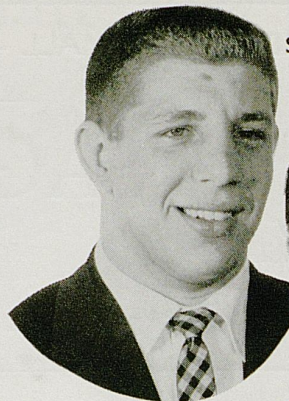
FOR COMPLETE REPORTS ON THIS GAME AND OTHERS BEING PLAYED TODAY, READ THE SPORTS SECTION OF SUNDAY HERALD-LEADER

ASHLAND DAIRIES

PRODUCTS Excel in Quality.

Ashland Dairies VAC-HEAT Process Insures Uniform Good Taste . . . Bottle After Bottle . . . Glass After Glass Every Day of the Year.

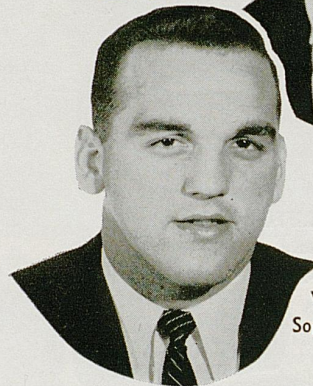
**At Your Grocer
From Your Routeman**



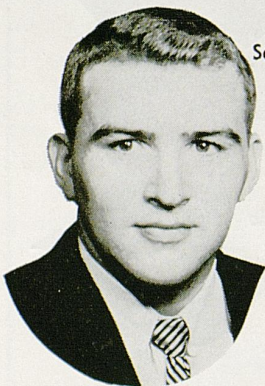
DENNIS KUNKLE
Sophomore — Guard
Beaver, Pa.



RONNIE CAIN
Sophomore — Guard
Cumberland, Ky.



VINCE LOCOCO
Sophomore — Guard
Louisville, Ky.



GARLAND MILLER
Sophomore — Fullback
Louisville, Ky.



LAWSON KING
Junior — Center
Belfry, Ky.



JOHN ILARI
Junior — Tackle
Louisville, Ky.

THE GREATEST TOUCHDOWN IN HISTORY!



...thousands are now
TEBBING their shoes...

teb

Amazing new shoe polish discovery that instantly shines and polishes your shoes in one simple step.

teb

One bottle for all colors of smooth leather.

teb

No muss . . . No fuss. Will not stain, rub off, or soil hands, fabrics, rugs.

39
shines,
only
39¢

Get **TEB** today from your favorite grocery, drug, novelty or shoe store.

Answers to "MYSTERY WILDCATS"—Vito "Babe" Parilli (1948-51)
and Bill Leskovar (1947-51).

We're Pulling For...

KENTUCKY'S
WILDCATS

*To Make 1956
A Great Season*

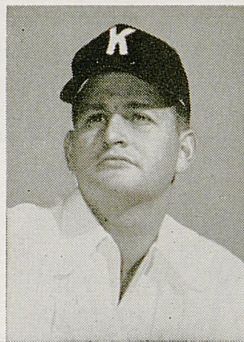


Campus Book Store

Everything for the Student



BUSTER BROWN
Equipment Mgr.



JOHN PAYNE
Trainer



BOBBY HOLT
Student Mgr.



When the Chips are Down and You Must Produce—

you'd better count on the guy who can deliver the best goods the fastest! There is not a person who has handled printing who has not needed fine engravings in the fastest time possible. Lexington Photo-Engraving Company is geared for "Fast Production . . . fine reproduction". We supply newspapers, magazines, and printers throughout Central Kentucky with the finest engravings obtainable anywhere.

LEXINGTON PHOTO-ENGRAVERS

223 W. SHORT ST.

PHONE 3-5015

SCORES OVER STOLL FIELD PUBLIC-ADDRESS SYSTEM COME TO YOU THROUGH THE COURTESY OF THE LEXINGTON NEWSPAPERS

DANCE



★ **TONITE!**

IN BEAUTIFUL

Joyland Casino

★ **BEST
BANDS
IN THE
LAND**

★ **BEAUTIFUL
SURROUNDINGS**

★ **MIXED
DRINKS**

★ **HOME OF THE
NATIONS NAME BANDS**

Joyland *Casino*

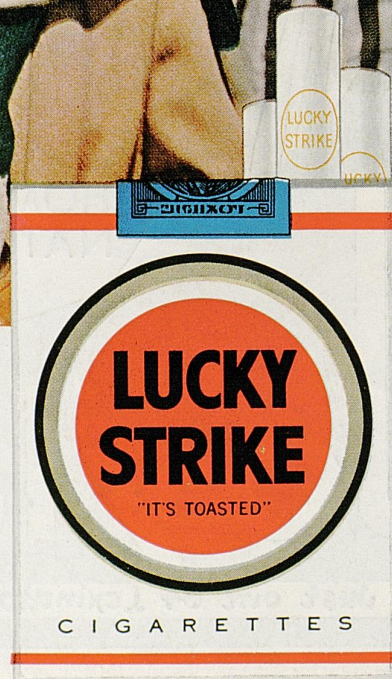
Just out of Lexington On the Paris Pike

Light up a Lucky—
it's light-up time!



Luckies Taste Better

Cleaner, Fresher, Smoother!



**"IT'S
TOASTED"
to taste
better!**

© A. T. Co. PRODUCT OF *The American Tobacco Company* AMERICA'S LEADING MANUFACTURER OF CIGARETTES