

KEY

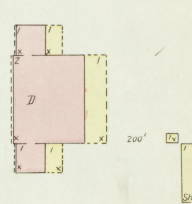
- THICK WALL IN AB ROOF
- WALL
- FRAME PARTITION
- OPENING & IRON DOOR
- WINDOWS - SHUTTERS
- STABLE
- WINDOOW IN 1<sup>ST</sup> STORY
- 1<sup>ST</sup> & 2<sup>ND</sup> STORY
- 2<sup>ND</sup> & 3<sup>RD</sup> STORY
- 3<sup>RD</sup> & 4<sup>TH</sup> STORY
- 4<sup>TH</sup> & 5<sup>TH</sup> STORY
- 5<sup>TH</sup> & 6<sup>TH</sup> STORY
- 6<sup>TH</sup> & 7<sup>TH</sup> STORY
- 7<sup>TH</sup> & 8<sup>TH</sup> STORY
- 8<sup>TH</sup> & 9<sup>TH</sup> STORY
- 9<sup>TH</sup> & 10<sup>TH</sup> STORY
- 10<sup>TH</sup> & 11<sup>TH</sup> STORY
- 11<sup>TH</sup> & 12<sup>TH</sup> STORY

SLIDES COLORED YELLOW ARE FRAME  
BLUISH - STONE  
GREY - IRON  
BROWN - ADGCE  
GREEN - SPECIALS

MARKED S'S ARE CLOTH LINED  
SHOOTING RANGE HEIGHTS  
ALTERNATE STREET NOS ARE ACTUAL  
CONDUCTING AIRWAY  
BROKEN LINE NEAR BLDG - WOOD CORNICE  
SOLID - METAL

DECEMBER 17 1897

NOTE:  
Water Facilities, Public Cisterns as shown,  
Private Wells, Cisterns,  
Five Dept. Vol. Fire Co. Members, 1 Fire  
Coaching, Hand & Agricultural Engines,  
Oil, Chemical, Fire, Saw, Cotton  
Press, Lined, Corn-Crusher, Mill,  
In Good Condition, 25 Lumber Buckets,  
2 Cow Bows, 3 Axes, 188, Truck, Road  
Drum, 2 Hinges, 188, Reel,  
Tow Lights, Mill.



57124021

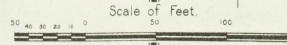
VACANT

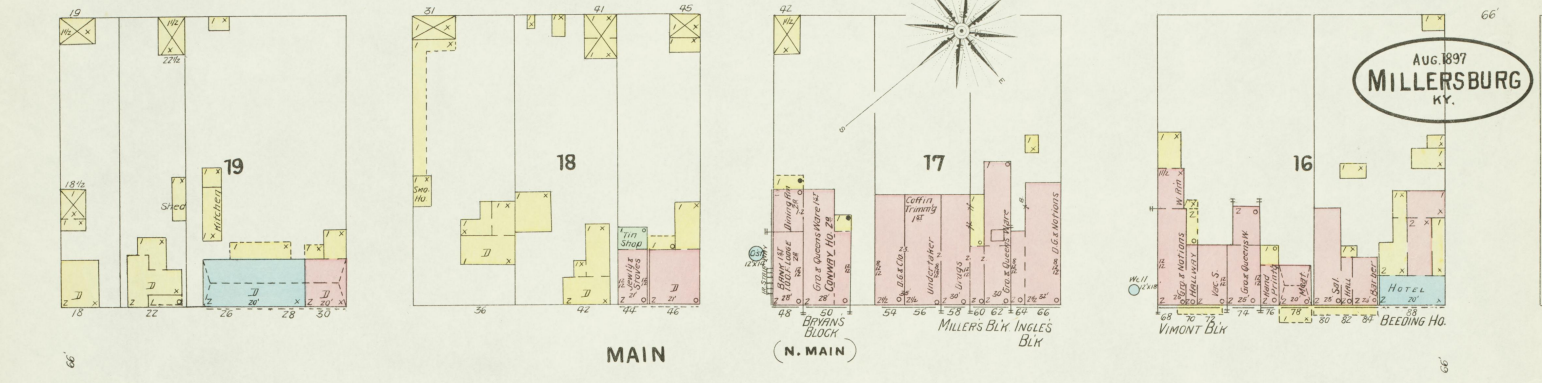
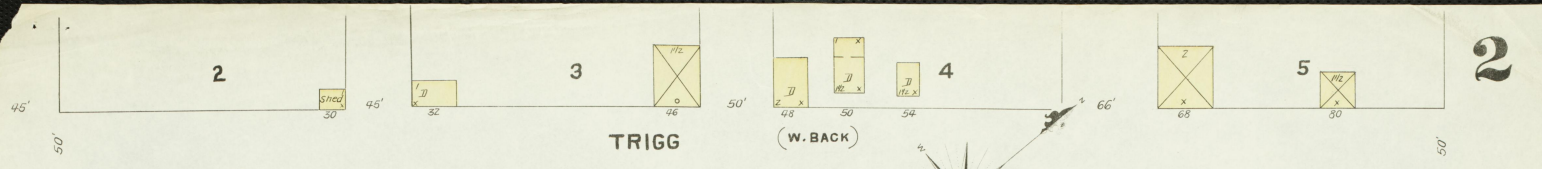
TRIGG (W. BACK)

MAIN (N. MAIN)

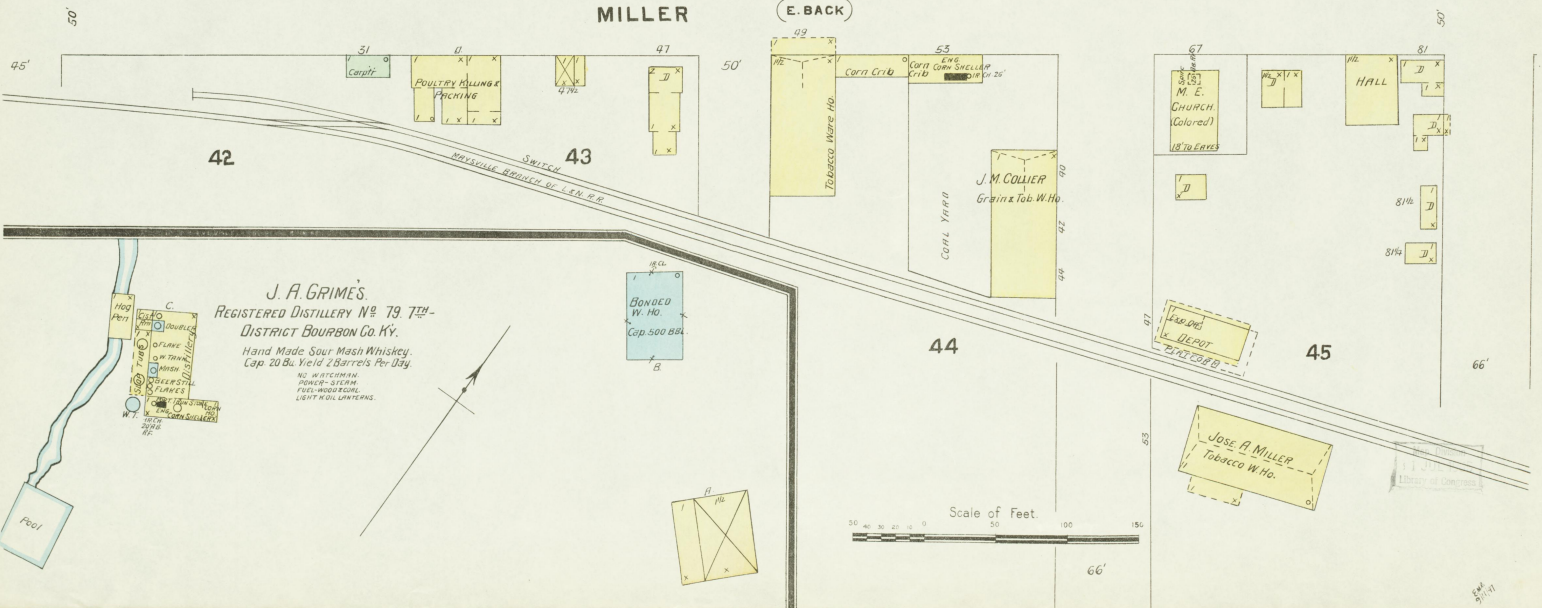
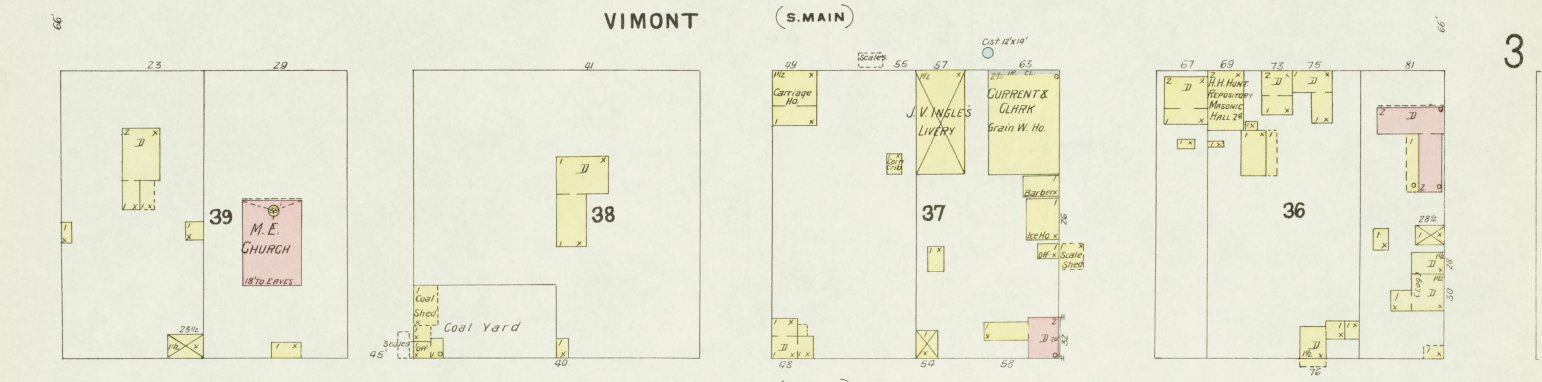
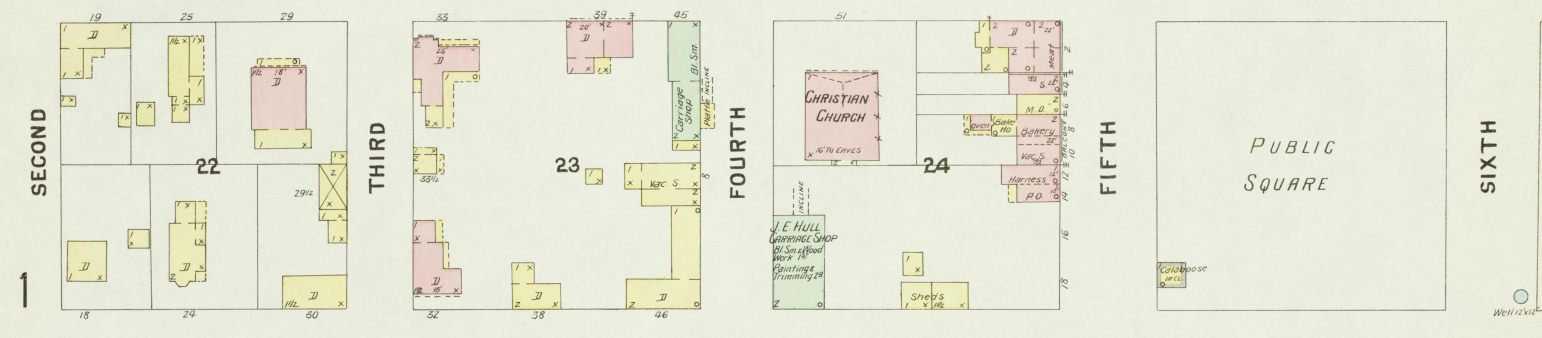
(S. MAIN)

VIMONT





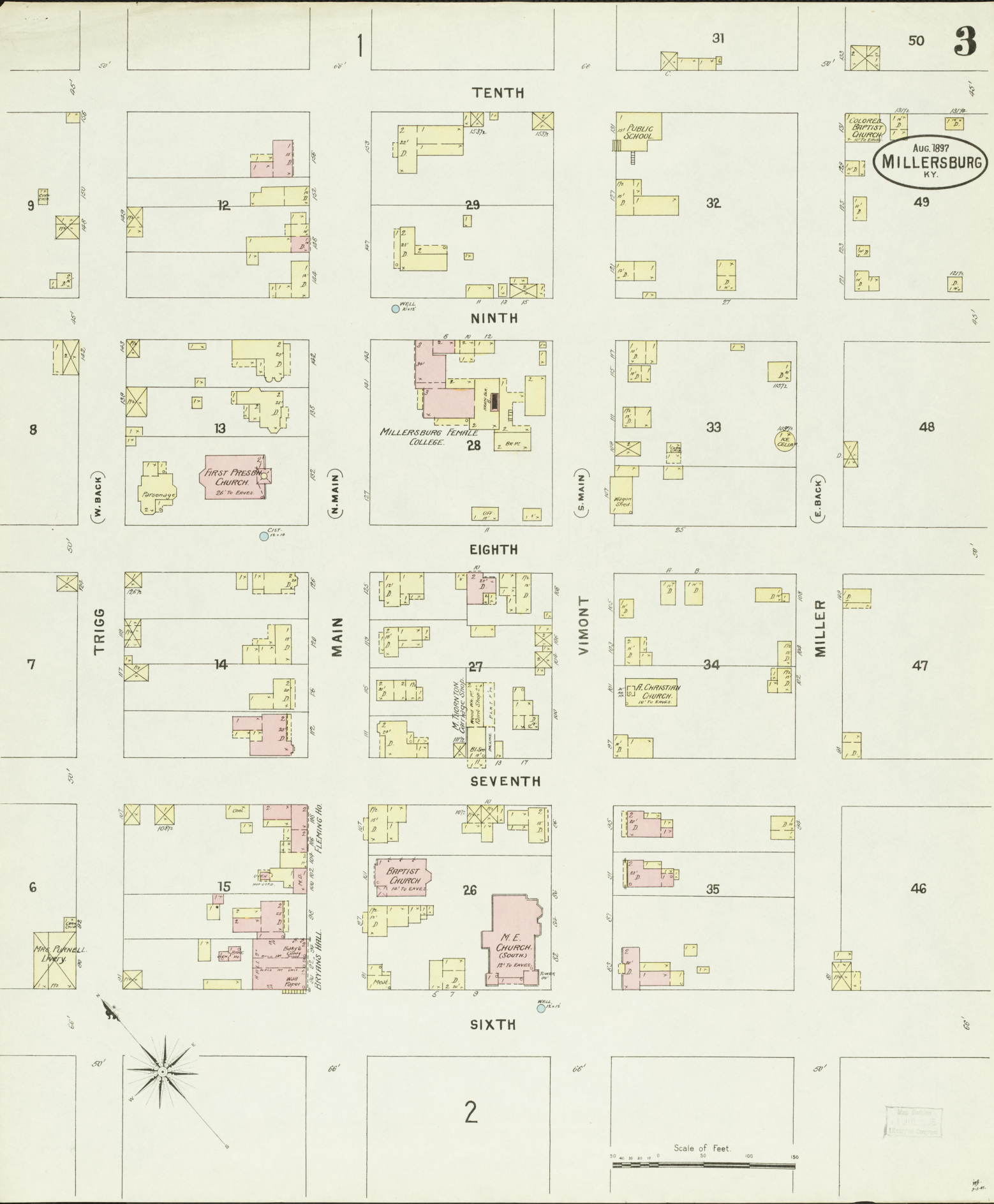
AUG 1897  
MILLERSBURG  
KY.



**J. A. GRIME'S**  
REGISTERED DISTILLERY N<sup>o</sup> 79 T<sup>h</sup>  
DISTRICT BOURBON CO. KY.  
Hand Made Sour Mash Whiskey.  
Cap. 20 Bl. Yield 2 Barrels Per Day.  
NO WATCHMAN  
POWER STEAM  
FULL WOOD ROOM  
LIGHT WOOD UNWASHED

Scale of Feet.  
0 50 100 150

Aug. 1897  
MILLERSBURG  
KY.



TENTH

NINTH

EIGHTH

SEVENTH

SIXTH

(W. MAIN)

(N. MAIN)

(S. MAIN)

(E. BACK)

TRIGG

MAIN

VIMONT

MILLER

MRS. PARNELL  
LIVERY

BAPTIST CHURCH  
14' TO EAVES

M. E. CHURCH  
(SOUTH)  
12' TO EAVES

A. CHRISTIAN CHURCH  
14' TO EAVES

MILLERSBURG FEMALE  
COLLEGE

PUBLIC SCHOOL

COLORED BAPTIST  
CHURCH  
14' TO EAVES

FIRST PRESBYTERIAN  
CHURCH  
26' TO EAVES

1312  
1314  
1316  
1318

1072  
1074  
1076  
1078

1072  
1074  
1076  
1078

1072  
1074  
1076  
1078

Map Edition  
1, 1897, 1898  
Library of Congress

Scale of Feet.

