

Odd Drop Kentucky Kernel

Vol. XXV, No. 185 Established 1894 University of Kentucky, Lexington, Kentucky Independent since 1971 Monday, August 26, 1991

Add/Drop ushers students in for new year

By SHAWN MEAUX
Contributing Writer

Add/Drop is a sure sign to the summer's end and the beginning of the fall semester.

Add/Drop begins Tuesday, Aug. 27 at the mezzanine of the Patterson Office Tower and runs through Sept. 4. Graduate students and seniors will be able to participate first, from 8 to 10 a.m.

Traditionally scheduled last in the Add/Drop process, freshmen will be able to alter their schedules from 11 a.m. to noon. Add/Drop will be closed from noon to 1 p.m.

Juniors will be next from 1 to 3 p.m., followed by sophomores from 3 to 5 p.m. and non-degree students from 5 to 6 p.m.

Lisa Collins, director of registration, said students should be aware that they cannot go to Add/Drop earlier than their allotted time. Those who cannot come at their

scheduled time must come later.

After Tuesday Add/Drop will operate on a first-come first-serve basis. The Registration Center, on the mezzanine of POT, will remain open until 7 p.m. on the first day of Add/Drop. Collins said students should bring a pen or pencil, a schedule book and a copy of the Add/Drop edition of the Kentucky Kernel. She advises students to know which classes they want to add and drop. Students also should have their schedule worksheets filled out completely before entering the Add/Drop site.

Students who want to drop a class without adding one may do so in Whitehall Classroom Building. Duplicate fall schedules will be available in 206 Ezra Gillis Building.

Anyone registering for classes Aug. 22 to 26 may add additional classes beginning Aug. 28, first day of classes. Those students are not eligible to add classes Aug. 27.

Add / Drop - August 27

Reporting Times

Graduate Students and Seniors -- 8:00 - 10:00 a.m.
Freshmen -- 10:00 a.m. - noon
Juniors -- 1:00 - 3:00 p.m.
Sophomores -- 3:00 - 5:00 p.m.
Nondegree -- 5:00 - 6:00 p.m.

- *POT mezzanine site remains open until 7:00 p.m. August 27 only.
- *All sites closed 12:00 - 1:00 p.m.
- *Add / Drop continues August 28 - September 4 on a first-come, first-served basis.
- *Add / Drop locations close from 12:30 - 1:30 p.m. daily August 28 - September 4.
- *All locations close at 4:30 p.m. beginning August 30.

Add / Drop Locations

Agriculture - N6 Ag Science North Building
Allied Health Professions - 222 Medical Center Annex 2
Architecture - 112 Pence Hall
Arts and Sciences - POT Mezzanine *
Business and Economics - POT Mezzanine *
Communications - POT Mezzanine *
Education - 166 Taylor Education Building
Engineering - 171 Anderson Hall
Evening / Weekend - POT Mezzanine *
Fine Arts - 206 Fine Arts Building
Graduate School - Add / Drop occurs at college registration site
Human Environmental Sciences - 103 Erikson Hall
Nursing - 305 College of Nursing Building
Pharmacy - 226 Pharmacy Building (pre-pharmacy go to A&S site)
Social Work - 602 POT

* begin in Whitehall August 27 only

TYRONE JOHNSTON/Kernal Graphics

FENCED IN



MICHAEL CLEVELER/Kernal Staff

Students will have to walk around fences and find new shortcuts to reach buildings on the campus for the next couple years. Construction behind the engineering quadrangle and the Enoch J. Grehan Journalism Building is expected to take at least two years. The construction, which began over the summer, will take up parking space on the central campus from Erikson Hall to the journalism building and will inhibit through traffic in that area. Students will not be allowed to walk through the construction area.

Trustees approve 25-year growth plan for campus

By GREGORY A. HALL
Associate Editor

A quarter century guide for the University's purchasing and use of land adjacent to the campus was unanimously approved by the Board of Trustees at its meeting Tuesday. Since the plan was introduced in March, it has been met with controversy from residents who fear their neighborhoods would be destroyed by the suggested expansion.

During the two-hour meeting the board heard from trustees and one nearby resident who questioned how UK treats its neighbors.

Aylesford Neighborhood Association lawyer Jack Stephenson expressed his concerns to the committee concerning the manner in which UK acquires property.

"The consequence is that we suffer and the value of our properties suffer," Stephenson said.

Stephenson asked that UK stop buying land piecemeal, unless it intended to use the land immediately. He said UK has been notorious for allowing its unused land to fall into disrepair.

The University declined, saying it needs to buy land surrounding the campus as it becomes available.

Stephenson also asked that UK consult with the residents and the Lexington-Fayette County Urban Government when it determines land use for specific property.

UK President Charles Wethington said the University will consult neighbors on an ongoing basis.

Stephenson's speech came after UK Vice President for Administration Donald Clapp spoke for nearly an hour, explaining the plan to the trustees and describing how UK, despite its past history, was trying to be a good neighbor.

In March, the trustees approved a preliminary draft of the plan and authorized the administration to solicit opinion from residents and city officials.

Tuesday, the trustees approved the revised plan, which took out the proposal for a traffic bypass around the eastern side of campus.

Residents have opposed the bypass plan, which UK dropped a few weeks ago.

The plan, however, still calls for Rose Street to be closed between



WETHINGTON

Washington and Columbia avenues.

UK officials said the road poses a danger to students and isn't built for the amount of traffic it carries.

Lexington Mayor Scotty Baesler has opposed closing Rose Street, a major traffic artery of the city.

The plan calls for the campus' central academic area to expand east across Rose Street toward Woodland Avenue.

The academic core is defined as the older areas of campus, surrounded by Euclid and Washington avenues and Rose and Limestone streets.

The plan also calls for the campus of the Albert B. Chandler Medical Center campus to expand across Limestone Street.

The Medical Center currently occupies land on both sides of Rose Street. The plan allows for the Medical Center to expand across Limestone to the west. Bridges over Limestone, like the one over Rose Street, would be used to connect the Medical Center.

The College of Agriculture complex would expand southward, across Cooper Drive.

UK proposed a similar plan in 1965, which also called for closing Rose Street. But the plan largely was not followed because of a lack of resources, Clapp said.

Also at the meeting four trustees were sworn in: student trustee Scott Crosbie; Georgetown automobile dealer C. Frank Shoop; and alumnae Marian Moore Simms and Kay Shropshire Bell.

Student health insurance under fire

By GREGORY A. HALL
Associate Editor

Student body leaders are optimistic about putting an end to the mandatory student health insurance law.

But they don't know which route they are pursuing will get them to that objective.

On Tuesday students met with state officials in Frankfort requesting that Gov. Wallace Wilkinson place the insurance issue on the agenda in a special session should he call for one.

Student Government Association President Scott Crosbie said he couldn't predict how much the meeting advanced the issue. However, he said that the insurance law will be taken off the books somehow.

"I'm very confident that it's going to work in the students' favor," Crosbie said.

The law, passed in the 1990 General Assembly, requires that students who are taking nine hours of course work or more be covered with insurance by Sept. 1.

The required coverage must pay



CROSBIE



WILKINSON

14 days' hospitalization, 50 percent of hospital physicians' fees and emergency room costs if the person is admitted.

Eastern Kentucky University student body president Ken Upchurch and state Board of Student Body Presidents governmental relations director William Summers also at-

tended the meeting.

Two students filed a lawsuit challenging the mandatory insurance in Franklin Circuit Court on Aug. 5.

Judge Joyce Albro granted the two students an injunction against having to pay the fee while the suit is litigated.

Since then, UK, the University of

Louisville, Eastern Kentucky University and Western Kentucky University have decided not to enforce the law this semester because of the injunction.

The student leaders have requested that the suit be given class-action status, so that it would involve all college students in the state.

Crosbie also was confident that the motion would be granted.

"I don't think there's any question that they're going to make this a class action," Crosbie said.

Albro was scheduled to rule on the motion on Thursday.

State Rep. Ernest Scorsone has pre-filed a bill repealing the student insurance law for the January session of the legislature.

Scorsone was out of town and unavailable for comment.

Wilkinson could call the legislature into session later this year to redistrict the state, as mandated by the results of the 1990 U.S. Census.

Because Kentucky has not gained enough population, it will lose one of its seven congressional districts.

The legislature will meet for its regular biennial session in January.

CORRECTION



An article that appeared in the July 25 edition of the Summer Kentucky Kernel contained a misspelled name. Linda Magid is UK's vice president for Research and Graduate Studies.

INSIDE: ADD/DROP CLASS LISTINGS



Your Official
UNIVERSITY OF
Kentucky
Bookstores

Our Huge Supply
of
USED TEXTBOOKS
SAVES YOU
25%

Plus
Earn EXTRA CREDIT DOLLARS
With
No Extra Work

Exclusively at the University of Kentucky Bookstores!

OPEN LATE
For Your Convenience
At the Start
of School

Student Center Annex
257-6304

Medical Center
257-2947



PRICES
EFFECTIVE
THRU 9/8/91

LOWE'S®

BACK TO CAMPUS VALUES!



\$454

1 x 12 x 8' All-Purpose Pine Board
#3 grade Ponderosa Pine. 4 smooth sides. Ideal for shelving. Can be painted or stained. #01368



88¢

8 x 8 x 16 Concrete Block
All-purpose building block. #10383

FURNITURE

SAUDER
woodworking



\$1996 Each

Student Desk, 3-Shelf Bookcase, Utility Cart Or Telephone Stand
All come ready to assemble and feature a beautiful Plymouth Oak finish. The student desk has a closed door storage area and large 40" x 15" worktop space. Bookcase has a fully enclosed back. Utility cart has 2 shelves, large worktop area and casters for mobility. Telephone stand has storage area for phone book, pad, etc. #95995; #6012, 13, 84



\$39

6 x 9 Broadloom Rug
Sizes are approximate. Comes in assorted styles and colors. #15123



\$1443 Each

Cedar Shoe Tree Or Cedar Gift Pack
•Red Cedar attacks unpleasant odors •Gift pack can be used in closets and drawers #64948, 49, 53

APPLIANCES AND ELECTRONICS

SAMSUNG



\$98

Samsung Compact Microwave
Has 10 power levels up to 500 watts, electronic touch controls, a lighted cooking compartment, a 99.99 minute timer, and a removable glass cooking tray. #51827

AT&T



\$2997

AT&T Trimline™ Phone
Has volume control, mute button, and last number redial. Tone/pulse switchable. Gray, ivory or white. #55367-9



\$1787 Each

Solid Brass Banker's Lamp Or Swing Arm Table Lamp
Banker's lamp has handblown glass shade. Both are perfect for den, office, etc. #75713.5

FREE SHOE RACK

Special Buy Limited Quantities!



\$2882

Closet Organizer
•4-tier design •15 compartments •color-coded •fits in closets •helps you get organized



\$2986

Panasonic Micro Cassette Recorder
2-speed tape selector. One-touch recording. #55105



\$999

GE AM/FM Clock Radio
Wake to music or alarm. Snooze-alarm*. #55058



\$1065

Lunch Tote™ Cooler
•Over 6 quart capacity •Built-in refreeze bottle #95854



\$250

Plastic Storage Crate
Perfect for records, clothes, etc. Stackable. In pink, slate blue or almond. #62616-8



\$588 **44¢** **\$394**

Shell Frame 50" #04635, 5-7
Assorted Pushpins 16 Pack #62963
Combination Padlock #60097



\$683

14" x 50" Door Mirror #96716, 45-47



98¢

6' Brown Or White Extension Cord
Triple tap capacity. 16-gauge, 2-wire cord with solid molded plug. For light household use. #70290.1



\$2997

Foldaway Ironing Board
Hangs conveniently on back of door and folds away easily when not in use. Almond frame and padded cover. #62514



\$597

6-Outlet Plug Strip
•Circuit breaker protects against overloads and short circuits •Can be mounted on wall vertically or horizontally #70386

128 W. Tiverton Way, Lexington, KY (606) 273-5151
1209 New Circle Rd., Lexington, KY (606) 259-2880
840 By-Pass Road, Winchester, KY (606) 745-3003

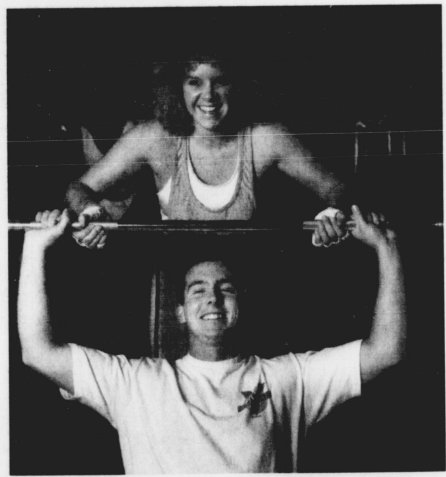
LOWE'S®

LOWE'S DISCOVER MasterCard VISA AMERICAN EXPRESS

UP TO \$1500 INSTANT CREDIT
For Qualified Applicants

YOUR ONE-STOP HOME IMPROVEMENT SHOP

Table with multiple columns containing alphanumeric codes and numbers, likely a schedule or data list. Columns include alphanumeric identifiers (e.g., ARC 201, ASC 310), time slots (e.g., 0200PM, 0430PM), and other numerical data points.



"Membership Has its Privileges!"

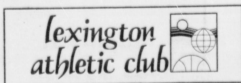
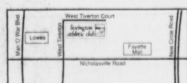
"Now, You can Join Lexington's only 5 Star Club during the Grand Opening of our Nautilus Plus Center for only \$19.95/month.*"

Nautilus Plus Members May:

- Attend 70+ Aerobic and Step Aerobic Classes each month
- Have unlimited use of Nautilus & Free Weights
- Use Cardiovascular Equipment including Stairmasters

Hurry, this offer expires on **September 30, 1991** or after 500 people join the new Nautilus Plus Center — whichever occurs first!

CALL 273-3163



* Plus \$39 enrollment fee and based on 24 month agreement. Other student membership plans available.

FREE CHECKS

WHERE: KENNEDY'S BOOK STORE
WHEN: MON, AUG 26 - THURS 29
TIME: 9:00 AM - 5:00 PM DAILY
WHO: BANK ONE

Welcome to Lexington UK students!
Bank One, Lexington will provide a free box of 50 duplicate checks to any UK student that presents this ad to our Bank One representative. For your convenience Bank One will have a representative on campus, in front of Kennedy's Book Store, to assist you in opening your Student Checking Account.



BIO 720	001	29	4.0	TBA		BUS 117	002	17	2.0	MWF	1100AM	1150AM	CE 549	001	15	3.0	TR	1220PM	0145PM	CHE 104	002	13	3.0	MWF	0900AM	0950AM	
BIO 732	001	5'	3.0	TR	0930AM	1045AM	BUS 117	401	23	2.0	MW	0600PM	0715PM	CE 581	001	13	3.0	MW	1100AM	1150AM	R	0900AM	0950AM	MWF	0900AM	0950AM	
BIO 740	001	20	2.0	TR	0500PM	0550PM	BUS 118	001	16	3.0	MWF	1100AM	1150AM	CE 582	001	20	3.0	MW	0500PM	0615PM	CHE 105	001	26	3.0	R	0900AM	0950AM
BIO 749	001	28	0.0	TBA		BUS 204	001	14	3.0	MW	0200PM	0315PM	CE 599	001	3'	3.0	TR	0200PM	0315PM	CHE 105	002	19	3.0	MWF	1100AM	1150AM	
BIO 768	001	24	1.0	TBA									CE 599	002	26	1.0	TR	0430PM	0545PM	CHE 105	003	30	3.0	MWF	0500PM	0550PM	
BIO 768	001	86	0.0	TBA		BUS 209	001	10	4.0	TR	0100PM	0250PM	CE 601	001	8	3.0	MW	0500PM	0615PM	CHE 105	004	19	3.0	MWF	0100PM	0150PM	
BIO 770	001	4'	1.0	TBA		BUS 315	001	13	3.0	MWF	1000AM	1050AM	CE 602	401	6	3.0	MW	0530PM	0745PM	CHE 105	004	19	3.0	MWF	0500PM	0550PM	
BIO 770	002	12	1.0	T	0400PM	0450PM	BUS 317	001	12	3.0	TR	0930AM	1045AM	CE 631	001	6	3.0	TR	1100AM	1215PM	CHE 105	005	22	3.0	MWF	0200PM	0250PM
BIO 770	003	9	1.0	TBA		BUS 445	001	13	3.0	MWF	0100PM	0150PM	CE 653	001	15	3.0	TR	0800AM	0915AM	CHE 105	006	13	3.0	TR	0500PM	0550PM	
BIO 772	001	25	0.0	TBA		BUS 519	001	14	3.0	TR	0300PM	0445PM	CE 654	001	20	3.0	TR	1100AM	1215PM	CHE 105	007	30	3.0	TR	0800AM	0915AM	
BIO 773	401	10	1.0	R	0730PM	0830PM	CE 106	002	7	3.0	MWF	0800AM	0950AM	CE 662	001	18	3.0	TR	0130PM	0245PM	CHE 105	008	13	3.0	TR	0800AM	0915AM
BIO 774	001	24	1.0	TBA		CE 106	003	3'	3.0	MWF	1200PM	0150PM	CE 671	001	19	3.0	TR	0800AM	0915AM	CHE 105	009	17	3.0	TR	0700PM	0815PM	
BIO 785	001	32	1.0	TBA		CE 121	001	4'	3.0	MWF	0200PM	0450PM	CE 676	001	12	3.0	TR	1200PM	0115PM	CHE 107	001	68	3.0	MWF	0500PM	0550PM	
BIO 798	001	10	1.0	T	0100PM	0200PM	CE 211	001	23	4.0	T	1100AM	1215PM	CE 681	001	2'	3.0	MW	0500PM	0615PM	CHE 115	001	12	3.0	MW	0900AM	0950AM
BIO 798	002	10	1.0	TBA		CE 341	001	1'	3.0	TR	0800AM	0915AM	CE 684	001	12	3.0	TR	1100AM	1215PM	CHE 115	002	43	3.0	TR	1000AM	1150AM	
BLK 401	001	15	3.0	T		CE 381	001	1'	3.0	MW	0900AM	0950AM	CE 687	001	10	3.0	MW	1100AM	1215PM	CHE 115	003	7	3.0	TR	0900AM	0950AM	
BME 530	001	28	3.0	T	0200PM	0340PM	CE 401	001	5'	1.0	M	0900AM	0950AM	CE 689	001	10	3.0	TR	0930AM	1020AM	CHE 115	004	4'	4.0	TR	0900AM	0950AM
BME 540	001	10	3.0	MWF	0100PM	0350PM	CE 382	001	12	3.0	TR	1200PM	0450PM	CE 699	001	10	3.0	TR	0200PM	0315PM	CHE 115	005	27	3.0	TR	0500PM	0550PM
BME 610	001	26	3.0	TR	1100AM	1215PM	CE 395	001	8	1.0	TBA	0300PM	0450PM	CE 681	001	2'	3.0	MW	0500PM	0615PM	CHE 115	006	13	3.0	TR	0900AM	0950AM
BME 768	001	27	1.0	TBA		CE 421	001	8	1.0	TBA	0930AM	1045AM	CE 684	001	12	3.0	TR	1100AM	1215PM	CHE 115	007	30	3.0	TR	0900AM	0950AM	
BME 769	001	94	0.0	TBA		CE 421	001	8	1.0	TBA	0930AM	1045AM	CE 687	001	10	3.0	MW	1100AM	1215PM	CHE 115	008	43	3.0	TR	1000AM	1150AM	
BME 781	001	29	3.0	TBA		CE 451	001	23	3.0	MWF	0900AM	0950AM	CE 768	001	7	1.0	TBA			CHE 115	009	17	3.0	TR	0900AM	0950AM	
BSC 331	001	8	3.0	MWF	1100AM	1150AM	CE 461G	001	13	3.0	TR	1100AM	1150AM	CE 769	001	90	0.0	TBA			CHE 115	010	12	3.0	MW	1000AM	1150AM
BSC 331	201	36	3.0	M	0600PM	0900PM	CE 471G	001	8	3.0	TR	1100AM	1150AM	CE 772	001	19	3.0	TR	0930AM	1020AM	CHE 115	011	27	3.0	TR	0900AM	0950AM
BSC 331	202	64	3.0	S	0900AM	1200PM	CE 482	001	16	3.0	MWF	1000AM	1050AM	CE 790	001	4'	1.0	TBA			CHE 115	012	30	3.0	TR	0900AM	0950AM
BSC 331	401	3'	3.0	W	0600PM	0900PM	CE 487G	001	3'	3.0	MWF	0900PM	0250PM	CH 601	402	25	3.0	M	0600PM	0830PM	CHE 115	013	30	3.0	TR	0900AM	0950AM
BSC 529	001	28	3.0	TR	1100AM	1215PM	CE 505	401	13	3.0	TR	0630PM	0745PM	CH 775	001	18	2.0	F	0330PM	0600PM	CHE 115	014	4'	4.0	TR	0900AM	0950AM
BSC 600	001	3'	1.0	F	1100AM	1150AM	CE 511	001	17	3.0	TBA			CH 785	001	5'	1.0	TBA			CHE 115	015	27	3.0	TR	0900AM	0950AM
BSC 772	001	10	1.0	TBA		CE 482	001	5'	3.0	MWF	1000AM	1050AM	CH 785	401	4'	1.0	TBA			CHE 115	016	30	3.0	TR	0900AM	0950AM	
BSC 785	401	8	3.0	W	0630PM	0900PM	CE 487G	001	3'	3.0	MWF	0900PM	0250PM	CH 785	401	4'	1.0	TBA			CHE 115	017	30	3.0	TR	0900AM	0950AM
BSC 790	001	4'	1.0	TBA		CE 505	401	13	3.0	TR	0630PM	0745PM	CH 785	401	4'	1.0	TBA			CHE 115	018	30	3.0	TR	0900AM	0950AM	
BUS 116	001	16	1.0	MWF	0900AM	0950AM	CE 521	401	11	3.0	MW	0600PM	0715PM	CH 785	401	4'	1.0	TBA			CHE 115	019	30	3.0	TR	0900AM	0950AM
BUS 116	002	16	1.0	MWF	1100AM	1150AM	CE 539	001	2'	4.0	TR	0200PM	0450PM	CHE 104	001	89	3.0	R	0200PM	0315PM	CHE 230	002	56	3.0	MWF	1200PM	1250PM
BUS 116	401	21	1.0	MW	0800PM	0715PM														CHE 230	002	56	3.0	MWF	1200PM	1250PM	
BUS 117	001	17	2.0	MWF	0900AM	0950AM																					

Barett

SHOES

Women's Pumps, Flats & Canvas Casuals With Matching Tote

One Pair 13.88 to 16.88

SALE 2 FOR \$25



Cantini®



PERRY POINT®



SABATINI®



SABATINI®



Keds®

Women's Canvas Keds® Or Stylish Sabatini® Bootie

Reg. 19.98 to 24.98

SALE \$18



SABATINI®

Women's SUEDE & LEATHER Fashion Flats One Pair 19.88

SALE 2 PAIRS \$29

Leather & Suede Bags 13⁸⁸ Compare at 18.00

★ Barett Also Has DYE-TO-MATCH Footwear, And Accessories, For That Special Occasion!

Lexington area stores . . .

1. Regency Center, 2335 Nicholasville Rd., Lexington, KY
2. Woodhill Circle Plaza, Woodhill Dr. & New Circle, Lexington, KY

MasterCard, Visa or Discover. Open evenings and Sunday afternoon. Check for local store hours.

Here's Your First Lesson In College Economics.

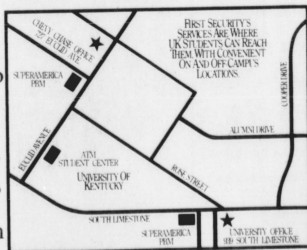


A quality education costs a lot of money. We're sure you already knew that. First Security Bank has a lot of money. You probably already knew that, too. But maybe you didn't already know that First Security Bank considers a college education to be a great investment, and that maybe we'd like to invest in yours.

NOW YOU KNOW.

With an office just a few minutes away from the University, and several QUEST[®]/CIRRUS[®] Automatic Teller Machines directly on campus, First Security's

services are always within easy reach of UK students. We offer a wide range of checking accounts, savings accounts, and a great deal more.



IT PAYS TO BANK WITH FIRST SECURITY.

Open a First Security Basic Checking Account now with as little as \$100. It's an account with no monthly service charges.

And no minimum balance requirement—you pay only for the checks you write. You'll also have unlimited use of over 40 First Security

QUEST[®]/CIRRUS[®] machines in Lexington and hundreds more all over Kentucky and beyond.

Bring this coupon to any convenient First Security office and you'll get an \$8 discount from the nominal initial charge—and an "A" on your first lesson in college economics.

OPEN YOUR ACCOUNT NOW AND SAVE \$8.

Present this coupon at either our Chevy Chase or University office and receive \$8 off the cost of a Basic Checking Account. Or if you already have a Basic Checking Account, use the \$8 savings toward the purchase of your next order of checks. Offer expires Sept. 6, 1991.



One First Security Plaza, Lexington, KY 40507

Table listing student IDs and names (e.g., CHE 230, CHE 231) and their respective class times and sections.

Table listing student IDs and names (e.g., CME 780, CME 781) and their respective class times and sections.

Table listing student IDs and names (e.g., CNU 702, CNU 703) and their respective class times and sections.

Table listing student IDs and names (e.g., COM 584, COM 585) and their respective class times and sections.

Table listing student IDs and names (e.g., TR 0930AM, TR 1045AM) and their respective class times and sections.

NOTE: Students wanting to take CLA 131 401, (a computer taught course) must attend one of the organizational meetings. Those who do not may be asked to withdraw from the class.

Organizational Meetings: Friday, August 30, 7:00 p.m. in CB 106 Tuesday, September 3, 6:00 p.m. in CB 106 Wednesday, September 4, 5:00 p.m. in CB 106

OFF BROADWAY COSTUMES advertisement. Includes address (428 Southland Dr Lexington, Ky), phone number (278-9278), and business hours (Monday-Friday 10am-5pm, Saturday 10am-4pm, extended hours in October).

Watch out for BOBB! PABBING INFORMATION FALL 1991 advertisement. Details eligibility requirements and permit types for parking on campus.

Maxwell Street Presbyterian Church advertisement. Features Sunday Worship 11 a.m., Sunday Evening College Fellowship 5:30 - 7 p.m., and contact information for Elizabeth at (255-1074).

Discover Kinko's advertisement. Promotes the slogan 'You get more than just great copies.' and lists services like color copies, Macintosh rental, and binding.

"R" (RESIDENT) HANG TAGS, "C" (COMMUTER) HANG TAGS, and "K" HANG TAGS advertisement. Provides detailed application procedures and timelines for each type of hang tag.

Table listing student IDs and names (e.g., CS 101, CS 102) and their respective class times and sections.

Table with columns for course ID, section number, instructor, and course details. Includes courses like ECO 202, ECO 391, ECO 463, etc.

Table with columns for course ID, section number, instructor, and course details. Includes courses like ENG 203, ENG 205, ENG 206, etc.

INNOVATION

FALL 1991 ENROLLMENT

The University of Kentucky Student Health Service is offering two group plans for 1991-92. Information packets are available at the Student Health Service. MEGA Life and Health Insurance Company is the carrier for both plans and is an "A" rated company according to A. M. Best Insurance Reports.

- Plan 1: **Minimum Benefit Plan.** This plan provides very limited coverage for hospitalization only.
- Plan 2: **Broad Coverage Plan.** This is a traditional insurance plan with a deductible and a co-payment. The plan covers inpatient and outpatient services and provides coverage worldwide. This plan has options for dependents.

READ THE BROCHURES AND COMPARISON SHEET CAREFULLY BEFORE MAKING A DECISION

ELIGIBILITY: Undergraduate: Must be registered for 6 credit hours.
Graduate: Must be registered for 3 credit hours.

NOTE: Certain 0 credit hour graduate students may qualify. Check with the Insurance Office at Student Health Service.

OPEN ENROLLMENT: August 26 - September 9, 1991
NEW ENROLLMENT: The first 14 days of Fall and Spring semesters are designated as open enrollment periods. The first 10 days of summer sessions are designated as open enrollment periods.

CONTINUE ENROLLMENT: Students wishing to continue enrollment from 90-91 have 14 days from the day school starts in the Fall, (deadline September 9) and 14 days from the end of the 6 month period ending February 26, (deadline March 13) to make payment. If you are currently in the plan with Banker's Life Assurance Co., your pre-existing condition time will not be affected; it carries over from that carrier to the new carrier, MEGA Life.

EFFECTIVE: The effective date of your insurance will be the date the Company or designated Student Health Service insurance representative receives your payment. For coverage to begin on August 26, payment must be received by the Company or the Student Health Service Insurance Office on or before that date. The first semi-annual premium payment provides coverage until February 26, 1992. The second semi-annual premium payment provides coverage until August 26, 1992. It is also possible to pay a full year's premium, if desired.

HOW TO PAY AND WHERE: Students who wish to enroll must complete an enrollment card along with a check, money order or credit card authorization for the specified amount (made payable to Student Insurance Division) by September 9.

You may mail to:
STUDENT INSURANCE DIVISION
P.O. BOX 152152
IRVING, TEXAS 75015-9990

OR you may enroll at the Student Health Service, Room B-170, Medical Plaza, first floor (blue doors) by 4:30 p.m. on September 9.

QUESTIONS: Call 1-800-767-0700 - MEGA Life
OR Info. Link (new computerized line to answer questions)
233-6356, 257-5390 Student Health Service

Table with columns for course numbers (ENG 480G, ENG 507, etc.), section numbers, times, and instructors.

Give it the old college try. When you subscribe to the Herald-Leader, you'll get campus news from our UK Bureau...

CHEVY CHASE COIN LAUNDRY UK's favorite Coin Laundry Open 8 a.m. to 10 p.m. Daily... 315 S. Ashland Ave. 266-5721

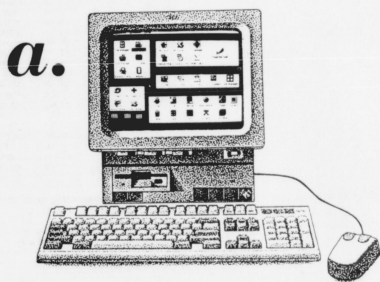
SEM SHIRAZI INSURANCE SERVICES WE REPRESENT DIFFERENT INSURANCE COMPANIES CALL 276-1732 NOW HEALTH INSURANCE

Up To 49% Off Student/Faculty Offer. 7-Day (Every day) \$33/Fall semester (Save 40%)...

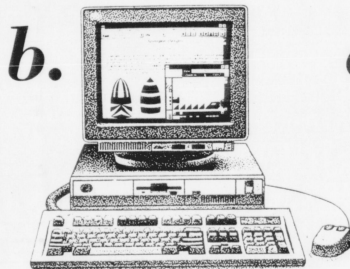
THE IMAGE MAKERS For all your favorite haircuts and styles Walk-ins welcome 254-6373 923 1/2 S. Limestone (next to Gatti's)

SUBWAY YUM'S THE WORD. GET A TASTE OF THE BIG TIME. WITH YOUR FAVORITE SUBWAY SUBS — jam-packed on fresh baked bread...

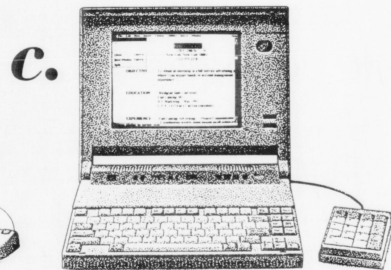
The most important multiple choice question you'll answer this term.



IBM PS/1™



IBM PS/2®



IBM PS/2 Laptop

Which of these easy-to-use IBM Personal System Models features preloaded DOS 5.0, Microsoft Windows 3.0 and Entertainment Pack for Windows as well as a variety of software options, and a surprisingly affordable price? **Answer: All of the above.**

Visit your IBM Collegiate Representative at P.C. Sales to see how you can get the right computer for you — at a **40-55% discount**. Also, ask about the IBM PS/2 Loan for Learning. Now, everyone can afford the #1 name in personal computers.

P.C. Sales
Room 107 Old Student Center
(606) 257-6320
Open: 8:00 - 4:30 Monday-Friday



RET 985	401 8 3.0	W	0500PM	1100PM	HIS 108	013 3' 3.0	TR	1100AM	1150AM	HIS 109	009 3' 3.0	MW	1200PM	1250PM	HON 201	006 1' 3.0	TR	1230PM	0145PM
RET 415	401 10 3.0	T	0600PM	0900PM	HIS 108	014 2' 3.0	TR	1100AM	1150AM	HIS 109	012 2' 3.0	MW	1200PM	1250PM	HON 300	001 8 3.0	W	0100PM	0330PM
RET 510	401 6 3.0	TBA	0600PM	0900PM	HIS 108	015 2' 3.0	W	0800AM	0850AM	HIS 109	013 4' 3.0	MWF	0900AM	0950AM	HON 301	001 16 3.0	W	0600PM	0730PM
RET 533	401 13 3.0	M	0600PM	0850PM	HIS 108	016 2' 3.0	W	1100AM	1150AM	HIS 109	014 3' 3.0	MWF	1000AM	1050AM	HON 305	001 12 3.0	TBA	0100PM	0215PM
RET 545	001 11 3.0	MWF	0500AM	0950AM	HIS 108	016 1' 3.0	TR	1100AM	1150AM	HIS 109	015 1' 3.0	MWF	1200PM	1250PM	HON 388	001 16 6.0	TBA		
RET 580	001 24 6.0	TBA			HIS 108	017 1' 3.0	TR	0800AM	0850AM	HIS 109	016 3' 3.0	MWF	0700PM	0845PM	HON 398	002 8 6.0	TBA		
RET 592	001 29 1.0	TBA			HIS 108	018 1' 3.0	TR	1100AM	1150AM	HIS 109	401 16 3.0	TR	0300PM	0445PM	HON 397	002 1' 3.0	TR		
RET 595	001 25 1.0	TBA			HIS 108	017 1' 3.0	TR	1100AM	1150AM	HIS 202	001 18 3.0	TR	0900AM	1045AM	HOR 330	001 9 3.0	TR	0900AM	0950AM
RET 597	001 9 1.0	TBA			HIS 108	018 1' 3.0	M	1100AM	1150AM	HIS 202	002 17 3.0	W	0700PM	0845PM	HOR 340	001 5 3.0	MW	0100PM	0150PM
RET 788	001 9 1.0	TBA			HIS 108	019 3' 3.0	TR	1100AM	1150AM	HIS 202	001 18 3.0	TR	0900AM	1045AM	HOR 345	001 21 3.0	MW	1200PM	1250PM
RET 787	001 10 1.0	TBA			HIS 108	020 1' 3.0	F	1100AM	1150AM	HIS 202	001 18 3.0	TR	1100AM	1215PM	HOR 375	001 14 3.0	MWF	0900AM	0950AM
RET 787	001 10 1.0	TBA			HIS 108	021 1' 3.0	T	1100AM	1150AM	HIS 202	001 18 3.0	TR	1100AM	1215PM	HOR 399	001 30 1.0	TBA		
RET 787	001 10 1.0	TBA			HIS 108	022 2' 3.0	W	1000AM	1050AM	HIS 202	001 18 3.0	TR	1100AM	1215PM	HOR 399	001 30 1.0	TBA		
RET 787	001 10 1.0	TBA			HIS 108	022 2' 3.0	TR	1100AM	1150AM	HIS 202	001 18 3.0	TR	1100AM	1215PM	HOR 399	001 30 1.0	TBA		
RET 787	001 10 1.0	TBA			HIS 108	022 2' 3.0	TR	1100AM	1150AM	HIS 202	001 18 3.0	TR	1100AM	1215PM	HOR 515	001 3' 3.0	W	1000AM	1050AM
RET 787	001 10 1.0	TBA			HIS 108	022 2' 3.0	TR	1100AM	1150AM	HIS 202	001 18 3.0	TR	1100AM	1215PM	HOR 515	001 3' 3.0	W	1000AM	1050AM
RET 787	001 10 1.0	TBA			HIS 108	022 2' 3.0	TR	1100AM	1150AM	HIS 202	001 18 3.0	TR	1100AM	1215PM	HOR 515	001 3' 3.0	W	1000AM	1050AM
RET 787	001 10 1.0	TBA			HIS 108	022 2' 3.0	TR	1100AM	1150AM	HIS 202	001 18 3.0	TR	1100AM	1215PM	HOR 515	001 3' 3.0	W	1000AM	1050AM

CASIO®

The scientific way to go back to school



9.00
Casio 8-digit scientific calculator features 78 functions, constant memory, automatic shut-off, convenient user memory and fractional capability.
FX250

13.00
Casio scientific solar-powered calculator features 499 functions, 10-digit display, one independent memory, 6 constant memories.
FX700

64.00
Casio 7000G graphic scientific calculator with 495 functions, 422 program steps, graphic functions and 46-character, 8-line display.
FX700G

VISA MasterCard Discover THE QUALITY YOU NEED, THE PRICE YOU WANT.



Make a date with BOBBI!



NEW ADDRESS:
2201 Regency Road
Suite 508
276-5419
Prepare for October
GMAT
Classes begin
August 28
Prepare for October
LSAT
Classes begin
September 5.
Call for details!

*There's a Place
for You!*

- Student Bible Study
- Home Groups
- Worship 10 a.m. Sunday
- Jesus is Lord!

**Lexington
Covenant
Church**

2700 Todds Road
Off Richmond Road
Past Lexington Mall
For information call:
268-2243
David Redish, Senior Pastor

Table with multiple columns containing course numbers, section numbers, times, and instructors. Includes sections for MA 109, MA 113, and MA 114.

Build A Great Student Body!
Special student rates available at Zandale location too!
2100 Oxford Circle
252-5121

\$24.95 per month
Unlimited Use
• Reebok Step Aerobics
• Treadmills
• Lifecycles
• Stairmaster
• Nautilus
• Basketball
• Freeweights

Where professionals shop.
• Drafting, Engineering and copying needs
• Full color laser copies
• Multiple page copying, Reports, Manuals
M - F 7:30 - 6 p.m.
Saturday 9 - 1 p.m.
328 Old Vine St.
255-1021
10% Discount on supplies
Students • Professors (on most supplies)

THE FIJIS ARE COMING!
We are leaders. We are scholars. We excel academically. We have lofty standards. We are friends. We have fun.
Phi Gamma Delta Fraternity. Committed to Excellence. Developing Leaders.
New at UK this fall. Coming September 4-13.
START YOUR OWN FRATERNITY!
Yes you can! Call Bob Baney at 255-1848.
PHI GAMMA DELTA IS HERE!

MI 512	001 4' 4.0	F	W	0100PM	0300PM	MSE 769	001 98 0.0	TBA	MUP 110	002 12 1.0	TBA	MUP 702	001 3' 1.0	TBA
--------	------------	---	---	--------	--------	---------	------------	-----	---------	------------	-----	---------	------------	-----

438 S. Ashland Ave. — Chevy Chase

FREE DELIVERY

Minimum \$4.00

269-4693

SUBS, HOT OR COLD

Includes lettuce, tomatoes, onions
Cheese and our Top Secret Dressing.

MINI MONSTER
(12 IN.)

- Roast Beef.....\$2.55
- Corned Beef.....\$2.55
- Pepperoni.....\$2.55
- Ham.....\$2.55
- Salami.....\$2.55
- Turkey.....\$2.55
- Tuna.....\$2.55
- Liverwurst.....\$2.25
- Cheese.....\$2.25
- Italian.....\$2.25
- Double Italian.....\$3.25

Whole Wheat & Rye Buns Available
Extra Items 75¢
Double Portions \$1.20

HOURS
MON-THUR.....10 A.M. TO MID
FRI-SAT.....10 A.M. TO 1 A.M.
SUNDAY.....11 A.M. TO MID

DELIVERY HOURS
MON-THUR.....10 A.M. TO 11:30 P.M.
FRI-SAT.....10 A.M. TO 1 A.M.
SUNDAY.....11 A.M. TO 12 P.M.

DON'T BE DISAPPOINTED
ALLOW 45 MINUTES FOR DELIVERY
We reserve the right to limit our delivery range.

SIDE ORDERS
Coke, Sprite, Diet Coke, Mr. Pibb.....65¢, 80¢
Lemonade or Iced Tea.....65¢, 80¢
Coffee.....40¢, 75¢
Potato Chips.....80¢
Hot Peppers.....25¢
Kosher Pickle Slice.....20¢
Tossed Salad.....60¢
Salad of the Week.....55¢
Milk.....81¢
Apples.....65¢
Desserts.....81¢

SubCenter

6 ft. Party Sub \$55.00

THE ADMINISTRATION

1/4 lb. of turkey served complete with cheese, tomato, lettuce and our own special sauce on a 12-inch Italian roll. \$4.05

ROB SPECIAL

Triple meat, with a choice of 4 items

\$5.95

WILDCAT SPECIAL

Double meat, with choice of 3 meats

\$4.80

FAULCONER

12-inch sub of ham, turkey and cheddar cheese on a bed of lettuce, tomato and onions with a shower of Italian dressing

\$4.80

MONSTER MIX
(The Italian Sub)
CHIPS AND DRINK

\$4.45

One coupon per customer Expires 9/16/91

FAULCONER

75¢ OFF

One coupon per customer Expires 9/16/91

WE'RE BACK!

WOLLEYBALL SHORTS

20-50% OFF

COURTSPOURS

Corner of Lime and Euclid 255-5125

What about BOBB?

The Big Ol' Blue Book, or more affectionately, BOBB, was produced to benefit students, faculty and staff with its helpful hints, handy information, money saving coupons and Wildcat sports schedules.

Look for this and much more in BOBB! Then, keep it around on your desk for reference, and look through it to find a place to eat or shop.

Now appearing in your room and coming soon to the Welcome Back (August 28) edition of the Kentucky Kernel.

KERNEL CLASSIFIEDS

Call 257-2871
Deadline: 3 p.m.
the day before publication

For Sale

14 x 70 MOBILE HOME - 3 BR, 1.5 Bath, Central Air, Appliances, Fireplace. VERY NICE! 272-0949.

1976 TOYOTA COROLLA - Good Running Condition. \$500. Call: 269-9592.

ALWAYS A GREAT FIND IN THE BOOK EXCHANGE Used Paperback Store. **BUYS SELLS TRADES**. Visit our new Village East HARDWARE & COMICS ANNEX for the Unusual. Select from over 140,000 at LOW Pre-Owned Prices. 867 E. High - Chevy Chase. 10-6, Monday thru Saturday.

Couch \$125, Chair \$50, Ottoman \$25, Color TV \$40, Black/White TV \$20, Computer Desk \$15. After 6:30 p.m. call 266-5819.

IBM 512K LAPTOP PRINTER, PORTABLE, TWO 3 1/2" FLOPPY DRIVES, EXCELLENT CONDITION. \$300. \$154 360 K FLOPPY DRIVE. IBM COMPATIBLE - \$50. CALL: 257-2483.

SONY 5 Disc Carousel CD Player with Remote Control. Perfect Condition. \$150. Phone: 273-1774.

For Rent

2 BR, 2 Bath TOWNHOUSE - Washer/Dryer, Appliances. \$600/mo. Deposit & References. 269-2716.

118 St. Phillip - 1 BR Apt. 1 Bath, Air, Appliances, On Bus Line. \$245/mo. plus Electric. 1 Year Lease. No Pets. Phone: 223-3262.

APARTMENT & HOME LOCATING SERVICE "Hassle-Free" Hunting, Relax While We Find The Right Apartment For You. **OUR SERVICE IS FREE!** Call: 266-1022 or 1-800-437-1022 Out of State Only. 2891 RICHMOND ROAD, SUITE 115.

ATTRACTIVE HOME AWAY FROM HOME - 1 Bedroom, Private Entrance, Basement Apt. with Many Windows, Fully Furnished, 1 1/2 miles from Campus (10 minutes). Paid Utilities, Parking. \$285/mo. References, Lease & Deposit required. 272-2912.

EFFICIENCY 2 BR - Lyndhurst Place. \$255 - \$425/mo. All Bills Paid. Clean & Quiet Older Bldg. Phone: 262-7079.

EFFICIENCY APARTMENTS, Close to UK. \$260/mo. All Bills Paid. Call: 231-9038 or 259-1945.

Female Graduate Student to Share Executive Style Furnished House. Rent & Utilities. Need Car. 277-8465.

FURNISHED EFFICIENCIES - Near UK. Free Utilities, Well Maintained Laundry, Sauna, and Exercise Equipment. \$285/mo. & Up. PHONE: 254-6420.

Pleasant Green Apartments - 408 Patterson St. Now Available for Rent. \$100 Deposit. Rent \$275/mo. 1-1/2 Bedrooms. Air Conditioned. Water Paid. Call: 254-7387, 9 a.m. - 12 Noon. UK Campus, Nice 7 Bedroom House - A/C, Parking. 1507 S. Limestone. \$1,350/mo. plus Utilities. Call: 879-8776.

WALK TO UK - 4 BR HOUSE, Large Kitchen & Livingroom. Central Air. \$550/mo. Call: 272-1151; 272-3871 or 272-2181 after 6 p.m.

Help Wanted

CHILD CARE WANTED FOR EXERCISE CLASS - Two Mornings Per Week, One Hour Each Day. Call: 269-2979 To Set Up Interview. Some Children Experience Preferred.

Female Babysitter for Tuesdays 10 a.m. - 3 p.m., Thursdays 10 a.m. - 12 Noon, and/or Fridays 11:30 a.m. - 3 p.m. Call: 268-2390.

Groomer for Wedding Gown Prep - Experience Preferred. Part-time or Full-time Available. 263-3834.

Help Needed Days & Weekends. Must be outgoing and work well with the public. Please Apply at Coffee Times 2571 Hegarty Road, Lexington and The Co.

CONFIDENTIAL PREGNANCY ASSISTANCE
Birthright
2134 Nicholasville Rd. 277-2635

Help Wanted - All Positions, Flexible Hours. Drivers can earn up to \$12/hr. Please Apply in Person: **MAMA JOHN'S PIZZA** 318 S. Limestone. Phone: 233-2808.

HORSE HELP Wanted Part-time Job Caring for Horses at Private Hunt/Event Barn. Mornings Preferred. Hours Flexible. Call: 263-3072. Board Available.

HOUSEBOYS NEEDED, Pay Plus Meals. Flexible Schedule. Call: 254-6026.

Housekeeper/Babysitter/Mother's Helper - Flexible Hours. Long Term. References. Phone: 269-0508.

NOW HIRING Night Cooks & Hostesses. Starting Salary \$5/hr. Flexible Hours. Please Apply at **BOB EVANS RESTAURANT**, 1-75 & Winchester Road, just off from campus.

Part-time Clerical Assistant - Evenings, Long Term, 20 hours/week. Minimum: \$5.00/hr. Flexible Schedule. Must be Efficient, Type 45 wpm, have Office Experience, Transportation. Bring or Mail Resume and handwritten letter of application to: **William Parrell, M.D.** 2101 Nicholasville Road Suite 103 Lexington, KY 40503.

ROOM IN EXCHANGE FOR CHILDCARE, Chevy Chase area. Flexible Hours. Call: 269-2654.

Sitter for 2 Children in My Home Mon-Fri, 2:30 - 5 p.m. Must have own Car. Call: 269-4078.

St. Joseph Hospital Children's Center has a Part-time Assistant Teacher Position Available. Hours: 3-7 p.m. Mon-Fri. Please Apply in Personnel Dept. EOE.

STUDENT INTERNS - \$7.15 Starting Pay. Work 10-40 hours per week. Will work around class schedule. All Majors should apply. Call Now! 293-9460.

STUDENT WINDOW & WALL Now Hiring. Part-time Positions Available. \$5 - 10/hr. Flexible Hours. Call: 271-2929.

UK Professor seeks Student to care for 2 Yr. Old Thursdays 2-6 p.m. Own Transportation. Experience, References Required. Begin August 29. Call: 268-6963.

WE NEED A BABYSITTER! 2 Lexington Families Currently Interviewing Students for Care of Preschoolers 2 Days and/or Nights. Own Transportation & Experience Preferred. 223-9046 or 223-7535.

Services

ALL TYPING/WORD PROCESSING, Resumes, Research, Legal, Thesis, LAST MINUTE ACCEPTED. Days, Evenings, Weekends. 254-1078 or 299-7839.

Mother/Grad Student Will Sit in My Home - M-F, for Your Infant or Child. Non-Smoker. Tates Creek/Lansdowne area. Call: 272-6442.

WORD PROCESSING/LASER TYPESETTING, Reports, Dissertations, Theses, Resumes, Cover Letters, Bindings, Notary, Fax, Visa/MC. Copy/Mail: 223-4299.

Birth Control Service
Birth Control of a reasonable price
Pregnancy Testing
All alternatives offered
Lexington Planned Parenthood
252-0448

You need to be in Pictures!

1992 Kentuckian Yearbook portraits: Sept. 9-20. 032 Journalism Bldg.

Personals

ADULT DANCE CLASSES, Ballet, All Levels, Jazz, Dance for Actors. Call for Information: The School of the Lexington Ballet. 233-3925.

Applications Being Taken for Peer Educators in Health Education Office. Must be interested in presenting Alcohol/Drug Information to other Students. Small Stipend. Come to 516 POT, 9 a.m. - 4 p.m.

HAIR UNLIMITED introduces Wolf Tanning Beds. Men Only Place, Richmond Road. 266-9800. *STUDENT DISCOUNT WITH THIS AD. Call About Our Reasonable Prices - Single & Friends.

MALE DANCER FOR HIRE - The Perfect Gift for Birthday Girls or Bachelorette! **TALENT EXTRAORDINAIRE**. 266-5662.

PRE-VET STUDENTS planning on applying to Auburn University in Fall 1991 and 1992 need to attend a meeting with Dr. Dwyer. Monday, August 26, 4 p.m., Room N-12, Ag North, or Tuesday August 27, 9 a.m., Clock Auditorium.

Roommate Wanted

FREE ROOM & BOARD FOR FEMALE STUDENT IN HOME NEAR UK IN EXCHANGE FOR PART-TIME BABYSITTING. Call: 299-2305.

NON-SMOKING FEMALE NEEDED to Share 2 BR, 2 Bath Apt. \$450/mo. Call: 272-4861 or (502) 855-4841.

ROOMMATE WANTED, House Right by UK. Either Sex. \$225/mo plus utilities. Call Sharon at 254-5256.

Richard R. Melville
Attorney at Law
DUI, Criminal, Divorce
259-0727

This is an advertisement. KY Law does not certify specialists of legal practice.

The Best Avenue to an Exciting Career is Right Here
College of Human Environmental Sciences
103 Erikson Hall 257-2855

August 26-30 Approved time to change academic majors

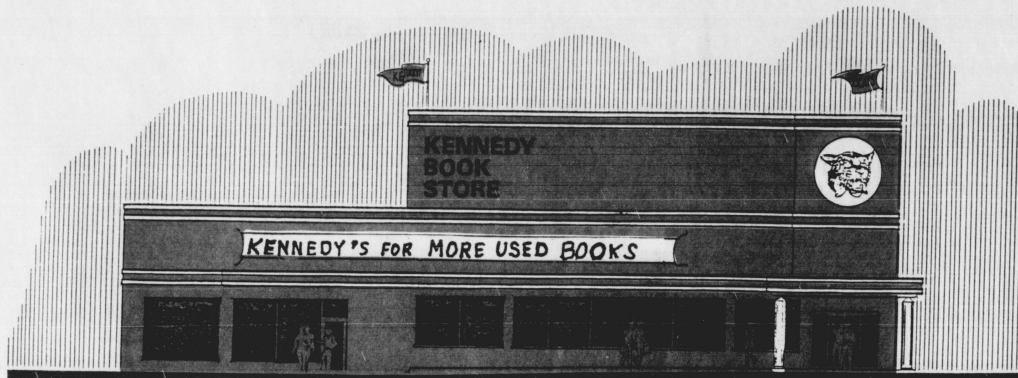
Arriving Soon!
1991 Kentuckian yearbook.

Watch the Kernel Classifieds for announcement when the book arrives.

The Graduate School Doctoral Dissertation Defenses

- Name:** Cheryl Ann Dahl
Program: Pharmaceutical Science
Dissertation Title: "Operational Transport in Calcium Loaded Bovine Pulmonary Artery Smooth Muscle Cells: Regulation by Inorganic..."
Major Professor: Dr. Mark Gillespie
Date: August 26, 1991
Time: 1:00 A.M.
Place: 210 Pharmacy Building
- Name:** Virginia Chelone Holmich
Program: Speech
Dissertation Title: "Notions of Futility: Postmodernism and the Works of Carlo Goldoni 1693-1766"
Major Professor: Dr. Susan DeArmitt
Date: August 28, 1991
Time: 4:00 P.M.
Place: 1143 Patterson Office Tower
- Name:** Rongqiang Lin
Program: Chemistry
Dissertation Title: "Spectroscopic, Electrochemical and Photochemical Properties of Rhodium(III) Complexes"
Major Professor: Dr. Thomas F. Custer
Date: August 28, 1991
Time: 3:30 P.M.
Place: 137 Chemistry/Physics Building
- Name:** Janet K. Miller
Program: Clinical Psychology
Dissertation Title: "Depression and Perceptions of Control"
Major Professor: Dr. Michael T. Noland
Date: September 10, 1991
Time: 1:00 P.M.
Place: 110 Student Hall
- Name:** Stan Qian Pan
Program: Plant Pathology
Dissertation Title: "Molecular Profiles of Induced Systemic Resistance in Tobacco to Blue Mold"
Major Professor: Dr. Joseph Kao
Date: August 27, 1991
Time: 3:00 A.M.
Place: 500 Agricultural Science Center - N
- Name:** Joel E. Phillips
Program: Business Administration
Dissertation Title: "Nonlinear Effects of Research and Development Expenditures on Market Value"
Major Professor: Dr. James A. Krollman
Date: September 10, 1991
Time: 1:00 A.M.
Place: 111 Transportation Building
- Name:** Linda Ellen Johnson
Program: Business Administration
Dissertation Title: "Communication Support Systems: A Systemic Approach to Research"
Major Professor: Dr. Clyde W. Holsapple
Date: August 28, 1991
Time: 1:00 A.M.
Place: 111 Transportation Building
- Name:** Michelle Wright
Program: Microbiology
Dissertation Title: "Modulation of Immune Cells by the Peptide of Bacterial Protein Acetaminophenase"
Major Professor: Dr. E. Charles New
Date: August 29, 1991
Time: 10:00 A.M.
Place: MB-603 Microbiology Center
- Name:** Joan E. Chremery
Program: Biochemistry
Dissertation Title: "Regulation of Phosphatidylinositol 3-OH Kinase and Its Conversion to Phosphatidylcholine"
Major Professor: Dr. Charles Vancian
Date: August 28, 1991
Time: 9:00 A.M.
Place: MB-503 UK Medical Center
- Name:** Sherin Parvizi
Program: Pharmacology
Dissertation Title: "A Pharmacological Analysis of Modulatory Hypertension in the Rat"
Major Professor: Dr. William R. Martin
Date: August 28, 1991
Time: 10:00 A.M.
Place: MB-503 UK Medical Center
- Name:** Juan Carlos Calderon
Program: Speech
Dissertation Title: "La Poesía de 'La Violencia' en Colombia"
Major Professor: Dr. Lawrence Pheasant
Date: September 6, 1991
Time: 2:00 P.M.
Place: 1143 Patterson Office Tower

KENNEDY BOOK STORE



WHY SAVE COUPONS AND CREDIT DOLLARS?
**COME TO KENNEDY'S AND
SAVE**



MORE STUDENTS HAVE FOR 41 YEARS



OPEN UNTIL 9:00 MON THRU THURS THIS WEEK
FREE PARKING

Kentucky Kernel

Vol. XCIV, No. 165

Established 1894

University of Kentucky, Lexington, Kentucky

Independent since 1971

Monday, August 26, 1991

UK's Curry using past to build future



Tim WIESENHAHN

Flashback — The 1980s. The Reagan years. The "me" generation. A 10-year span of selfishness and gluttony fueled by contempt and scandal. And, at best, a mediocre decade for UK football. Oh the shame.

Present time — The 1990s. A kinder, gentler nation. Earth Day. The age of sincerity. A 20-month span of recycling and ecology fueled caring and responsibility. And also, a season of UK football filled with raised expectations and a glimpse of future victories. Oh the glory.

But as UK football coach Bill Curry introduced his 1991 squad to the media last week at the Cats' annual picture day, he made a confession. He too, seeks winning right here, right now. Oh the shame.

"We'll shot for it now," Curry said. "But we are not going to look for a quick fix or instant results or instant success. We seek habitual winning. We must drive past our limitations so it becomes a habit — then we'll go through it some more." Oh the glory.

Flashback — The late 1960s. The Johnson years. Man on the moon. The Green Bay Packers guided by coach Vince Lombardi and with Curry at offensive center winning National Football League titles. Oh the glory.

Present time — Curry is beginning his second season as UK's head football coach. His debut as a wildcat last year produced a 4-7 season and new sense of urgency. Kentucky football yearns to be a winner now. Nevertheless, Curry again shuns the quick fixers.

"There is no pill or bottle that gives you that," Curry said of overnight success. "Don't believe those commercials. You cannot ride out into the Sahara and roll out a swimming pool and good-looking women. You can't do it."

Curry has never forgotten his experience as player with the Green Bay Packers or later with the Baltimore Colts.

He speaks of his fabled peers and mentors often and in detail. With Curry, it's habitual. Lombardi, Bart Starr and Don Shula loom as large to Curry at UK in 1991 as they did in Green Bay and Baltimore more than 20 years ago.

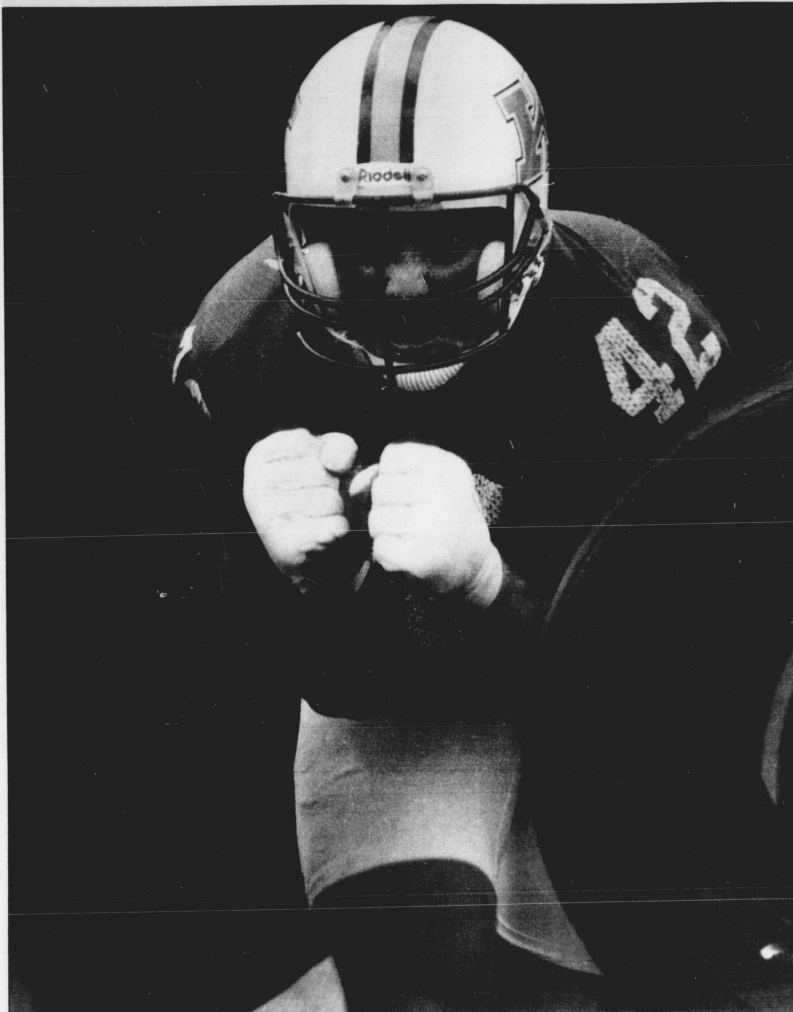
They are present at every media gathering. But Curry remembers what football players like these can do elsewhere of the Sahara. They win, habitually.

Today, Curry instills in his players the same kind of images. Images of winning.

Get it done today is one of coach Curry's familiar commands. His technique and style samples the spiritual as well as the practical. "Pure ole smash 'em" Curry calls it.

"This team has to be all of what I believe it is in terms of attitude and toughness. This team must fulfill my belief in them," Curry said.

Flashback — November 24, 1990, Neyland Stadium, Knoxville.



MICHAEL CLEVENGER/Kernel Staff

Outside linebacker Dean Wells pummels a blocking sled during football practice last week. Wells, a marketing junior, is a member of the football team's elite defensive squad called the "black watch." The first game is Sept. 7 against Miami (Ohio) at Commonwealth Stadium.

Tenn. Kentucky vs. Tennessee. The Battle for the Beer Barrel. A UK offensive executing at will. A UK defensive forcing turnovers.

And a UK fake field-goal attempt turned touchdown that garnished the Cats a 21-14 lead at halftime. For 30 minutes, oh the glory.

But the Cats could not sustain their prowess and the Vols marched to a 42-28 victory. But there was no shame. This was not the Sahara.

A new age of Kentucky football had blossomed on the Neyland Stadium artificial turf. An age of winning. Sept. 7, 1991 is opening day.

Present time — When will UK play with the enthusiasm that raged in the 1990 finale? When will UK wield the attitude of habitual winning fostered in Lombardi, Starr and Shula and carried on in Curry? Right here right now, Curry says.

"Sept. 7 is where we hope to pick up where we left off at the end of last season," Curry said. "There is an enthusiasm at Kentucky generated (this season) by its football team ... You will enjoy watching this team play. They have enthusiasm and they work."

Sept. 7, 1991 is opening day.

Kentucky vs. Miami of Ohio of the Mid-America Conference. Not exactly the Green Bay Packers of the NFL or the Tennessee Vols of the Southeastern Conference? Think again.

"A Mid-America Conference game for the University of Kentucky is not a breather," Curry said. "It is a tough football game, and yet we will be expected to win. These are good, hard-nosed, well-coached football teams. ... (Miami of Ohio) has a tradition of whipping Southeastern Conference football teams and ACC teams. They've enjoyed

doing that for years."

Could then an opening day victory, inspired by the players of past, executed by the players of present usher in a second century of habitual winning to be savored by the players of the future? Oh the glory. But what of an opening day defeat?

You cannot ride out in the Sahara and roll out a swimming pool and good-looking women.

Sports Editor Tim Wiesenhahn is a journalism and English senior and a Kernel sports columnist.

Poetry pays off for research-magazine editor

By HUNTER HAYES
Arts Editor

For Jeff Worley more than 20 years experience of writing poetry has rewarded him well, primarily with the satisfaction of doing something he enjoys. But recently his craft has paid off in a big way.

Worley, an associate editor of the UK research magazine *Odyssey*, recently was rewarded with a \$20,000 grant from the National Endowment for the Arts. He has now published his first collection of poetry, *The Other Heart*.

The chapbook, published by The Devil's Millhopper Press, contains 20 poems dealing with joys and pains (both physical and emotional) from marriage heartaches and triumphs to vasectomy.

"I think the collection explores the difficult challenge of two people

Worley wins \$20,000 federal grant

living together," Worley said. "I think one of the things that people take for granted too often is when people are either living together or are married, just the difficulty of doing that on a day to day basis. I think it's an incredible accomplishment for two people to stay together for 10, 20, 30, 40, 50 years. I find that amazing."

The theme of the experience two people share on a daily basis seemed to suggest itself to Worley as he was collecting the poems for publication.

"I think all of the poems talk about romantic love, or sexual love, or couples living together — sometimes in harmony, sometimes in dis-

harmony," he said. "But when I put this collection together it seemed to me that I had a lot of poems written that sort of centered around this theme."

The poems have appeared in numerous publications within the last 10 years.

"There are two in there that are a year old that I put in there after the book was accepted. These are thematically good, I think, so I wanted to include them," he said.

Despite the fact the poems are relatively young, Worley said he had been working on the book for more than 18 years before they were published.

He began to transform a child-

hood pastime into a craft as an undergraduate at Wichita State in Wichita, Kan., and took a creative writing course from an instructor named Michael van Walleghen.

"Michael was a terrific teacher and he also read some of his poems in class. There are a couple that I remember in particular, and I thought 'Here is something that is almost magical: Here is somebody writing poetry and it sounds a lot like un-

premeditated speech — the way we sort of talk to each other,'" he said.

"I thought, 'Wow! People really can write this way.' And not only were they writing in this way but it was sort of the convention. That interested me because it seemed like

such a natural thing to do with language."

As a child, Worley liked the natural sounds of language and playing with it in various games. He said he thinks it was the beginning of the poet inside him exerting himself.

"I've always liked playing around with words," Worley said. "Even as a kid I loved puns, riddles and jokes, sort of unusual turns of phrase. I liked crossword puzzles. Really, any kind of word game easily attracted me."

Jeff Worley will give a reading and signing from *The Other Heart* 7 p.m. Thursday, Aug. 29 at Joseph-Beth Bookellers at the Mall at Lexington Green, 3159 Nicholasville Road. Poet Marcia Hurlow will also read and sign her new chapbook. For further information, call Joseph-Beth at 273-2911.

Helpful hints on UK life



Bob NORMAN

Surgeon General's Warning: University life — with its cram sessions and seemingly endless partying — can be hazardous to your health.

The General, in his most recent warning label is dead right. Athletics and physical fitness are often swept under the cumbersome rug of college life. What was once a tone body sometimes becomes something that is quite distinctly *not* tone.

For instance, do you remember the days when you could actually pull up for a jump shot and not look spastic? Or the days long past when tennis wasn't a mysterious game of chance; the racket felt comfortable in your hand and the term topspin meant something other than a concise description of your psychological state while on the court.

Well, those days can return and our grand old University can facilitate this regeneration.

Intramural and club sports are here to keep you in good physical shape. You can use these programs either to do some catching up.

If none of the clubs or intramurals satisfies your thirst for physical centrality, then take a look at the schedule book. Lift weights, scuba dive or do some alpine skiing.

The key here is doing, not thinking. Act. In the immortal words of Nike, the most visible philosophical source and moral staple in our country, "Just Do It."

It seems that at this point in our collective lives — the beginning of a new semester — our minds are full of wonderful plans for the future. Resolutions fly, change is word up.

"This semester, I'm going to study at least two hours every night, never skip a class. Granola and fruit juice will be my dietary base. I will reach my goals, exercise daily, help little old ladies cross the street and take in stray cats and dogs. I'm going to take up a musical instrument. I will meditate an hour a day on how to become a better person and I will stop screaming obscenities at nuns ..."

One thing about all the amendments one tries to make in daily life, however, is that they are only thoughts, grandiose ideals, words. Words, just like this column.

And when the realities of college life come knocking on your door and then gradually move into your den, the ideals begin to move out, one by one, until they are all gone.

And then the semester ends, soon another begins, and all ideals come romping back into the picture. In the mind, a new and improved person emerges. It can become, in the words of a friend, an "eternal loop."

Now is the time to grab the energy of a new semester and do something with it. And a way to start is to get physical, to engage in a little friendly competition. We have clubs and intramurals running around everywhere, so check it out.

Senior Staff Writer Bob Norman is an English senior and a Kernel sports columnist.

Table with columns for course number, section, title, room, instructor, days/times. Lists various courses across different locations like Lexington Central Library, Tates Creek Senior High, and surrounding counties.

University of Kentucky Extended Campus Programs Undergraduate Credit Courses Fall 1991

Detailed course listing table with columns: LEXINGTON LOCATIONS, COURSE/SEC, TITLE, ROOM, INSTRUCTOR, DAYS/TIMES. Includes courses like Introduction to Cultural Anthropology, History of the U.S. through 1865, etc.

For Student Health Insurance That's A Cut Above The Rest...

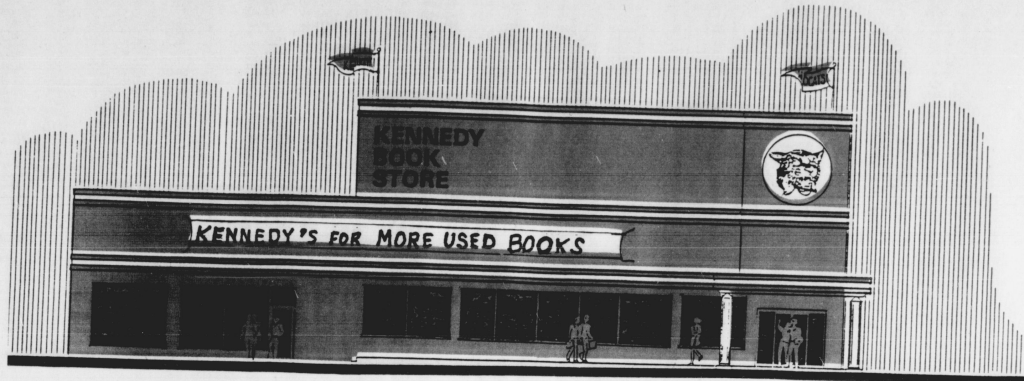
Consider the 24 Karat Major Medical Plan from Time Insurance. Time's plan outshines the competition because more value has been built into every benefit... Free-dom to choose your doctor and hospital... Non-smoker's discount... Prescription drugs, ambulance and x-ray coverage...

On occasion, the University must cancel a class which has insufficient enrollments. Inclement Weather Policy: Instructors should announce in advance a policy regarding cancellation due to inclement weather.

John W. Marcum, CLU 2043 Regency Cir. Lexington, KY 40503 (606) 276-1413



KENNEDY BOOK STORE



OFFICIAL UK TEXTBOOKS

**MORE STUDENTS, BY FAR,
BUY THEIR BOOKS AT KENNEDY'S**

**WE BUY MORE AND WE SELL MORE USED
BOOKS AT UK THAN ANY OTHER STORE**

**KENNEDY'S HAS BEEN THE BOOK STORE
LEADER AT UK FOR 41 YEARS**

**YOU DO NOT NEED COUPONS OR CREDIT
DOLLARS TO SAVE AT**

KENNEDY'S

OPEN THIS MONDAY-THURSDAY 8 A.M. - 9 P.M.



Your Official
**UNIVERSITY OF
Kentucky
Bookstores**

Our Used Textbooks Save You 25%
We Have the Most!

Gear Up for Store-Wide Savings

**Thumb-Indexed
DICTIONARY**
Your Choice
• AMERICAN HERITAGE
• WEBSTER'S COLLEGE
SAVE \$6.00

**UNIVERSITY OF KENTUCKY
T-SHIRT**
100% Cotton
COMPARE AT \$14.99 **\$8.99**

2-Pocket PORTFOLIO
Choose from 5 Colors!
4 For \$100

**AMERICAN HERITAGE
ELECTRONIC
DICTIONARY SOFTWARE**
For IBM or MAC
Save \$40.00 **\$59.95**

**EASTPAK
LEATHER
BACKPACK**
\$69.95

**REBATE SPECIAL
Papermate
STICK PENS**
#95134 10-Pack #95152
Sale Price \$1.19
Rebate \$1.00
After Mfr Rebate **19c**

- SCHOOL IMPRINT SWEATSHIRTS (selected styles) \$5 off
- BIC AUTO FEED PENCILS, 7-PACK #MP9582 99c
- FABER CASTELL WOOD CASE PENCILS 10-PACK #13849 99c
- PARKER ELECTRA FOUNTAIN PEN #03713 / #05823 \$5.50
- PARKER ROLLER BALL PEN #03723 / #05813 \$3.98
- SMITH CORONA TYPING RIBBONS 50% off

- SCHOOL IMPRINT NOTEBOOK single subject 70 sheets #45-#33-345 99c
- SCHOOL IMPRINT WIREBOUND NOTEBOOK 3 subjects w/ pockets 120 sheets #84-31-384 \$2.99
- LEATHER-LIKE PAD HOLDER w/pad \$9.99
- POLY BINDERS, CHOICE 1/2" or 1" PE1-2-3 / RPE1-3 \$1.59
- FILLER PAPER 150 SHEETS #13-180 \$1.29

- EASTPAK WOODSTOCK PAK'R (suede bottom) lifetime guarantee #W0995 \$29.99
- EASTPAK RADICAL PAK'R BACKPACK waterproof, lifetime guarantee #W0520 \$19.99
- ROGET'S THESAURUS (thumb index) \$9.95
- ORIGINAL STUDENT CALENDAR \$5.95
- SCHAUM'S OUTLINES (selected) \$2 off
- SAVE THE EARTH CALENDAR (16 mos.) \$8.95

For Every \$20 You Spend, You Receive 1 EXTRA CREDIT DOLLAR To Spend on Any Merchandise on Your Next Visit

Student Center Annex
257-6304

Medical Center
257-2947

**FREE
"FLIP 'N FILE"
STORAGE CASE**
(\$4.99 Value)
With the Purchase of
3M
10-PACK 3.5" DISKETTES
DS/DD #41023 or DS/HD #41024

OPEN LATE
For Your Convenience
At the Start
of School

The University of
Kentucky
Bookstores



What about BOBB?

The Big Ol' Blue Book, or more affectionately, BOBB, was produced to benefit students, faculty and staff with its helpful hints, handy information, money saving coupons and Wildcat sports schedules.

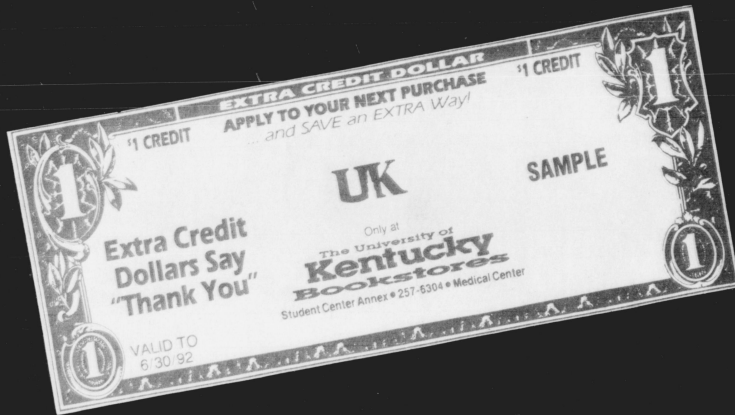
Look for this and much more in BOBB! Then, keep it around on your desk for reference, and to look through it to find a place to eat or shop.

Now appearing in your room and coming soon to the Welcome Back (August 28) edition of the Kentucky Kernel. Pick up a copy!



Your Official
UNIVERSITY OF
Kentucky
Bookstores

Gear Up To
Earn Extra Credit
with
No Extra Work!



For Every \$20 You Spend,
Receive 1 EXTRA CREDIT DOLLAR
To Spend on ANY Merchandise
on Your Next Visit

Exclusively at the University of Kentucky Bookstores!

USED TEXTBOOKS SAVE YOU 25%
We Have the Most!

OPEN LATE
For Your Convenience
At the Start
of School

Student Center Annex
257-6304

Medical Center
257-2947

The University of
Kentucky
Bookstores

