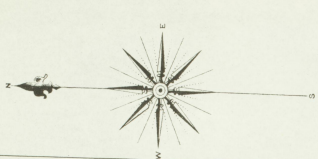
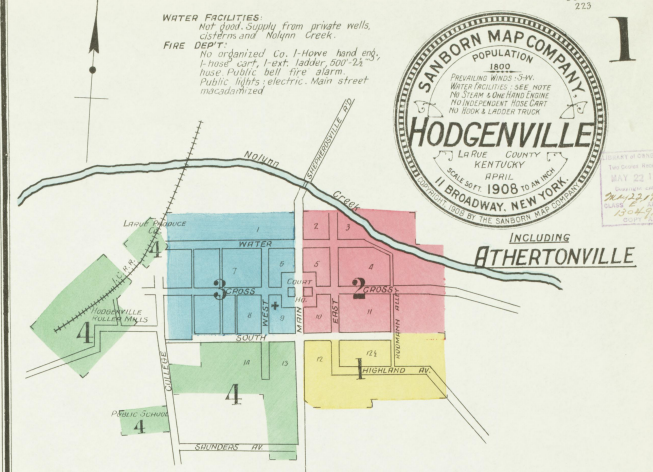
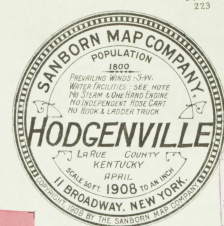


1
Map Division
JUL 1925
Library of Congress



WATER FACILITIES
Not Good. Supply from private wells,
Cisterns and Nolpin Creek.
FIRE DEPT.
No organized Co. 1-Home hand exp.,
1-wood cart, hand ladder 500-24
have Public bell fire alarm
Public lifts; electric. Main street
municipalized



INDEX

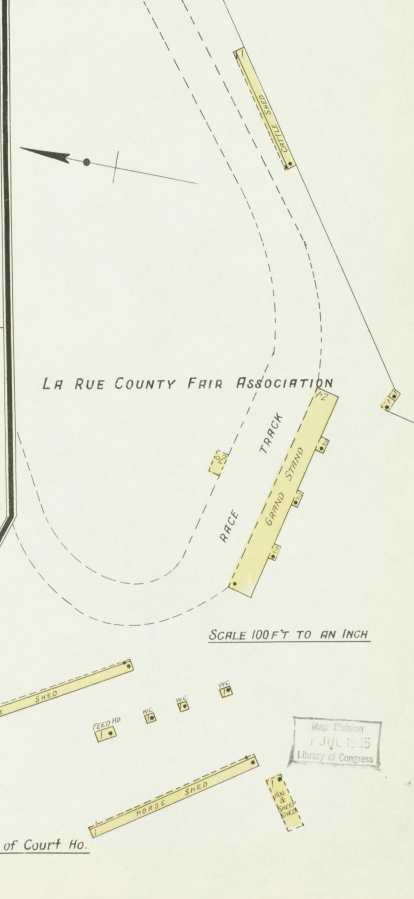
STREETS	
B	Baristown & Green River Pike, at Athertonville..... 104-146 5
C	College..... 101-107 4
	County Road..... 6
	Cross..... 184-229 3
	"..... 213-226 2
	"..... 232-260 2
E	
East.....	481-404 1
".....	405-425 2
".....	436-439 1
".....	440-448 2
H	
Highland Ave.....	301-242 1
M	
Main.....	484-504 4
".....	505-524 3
".....	526-528 1
".....	529-550 2
".....	601-611 1
S	
Saunders Ave.....	98-109 3
South.....	110-114 2
".....	110-124 4
W	
Water.....	89-129 3
".....	111-151 2
".....	130-143 2
West.....	296-304 4
".....	305-328 3
SPECIALS	
A	Atherton Hotel..... 5
	" J. M. & Co., Dis- tillery..... 5
B	Baptist Church..... 4
	(Colored)..... 3
C	Carter, J. A., Building..... 4
	Catholic Church..... 4
	Christian Church..... 4
	County Court House & Jail..... 2
D	Daugherty, J. K., Distillery..... 6
F	Fire Department..... 3
H	
H	Hayes House..... 2
	Hodgenville Creamery Co..... 2
	" Hotel..... 2
	" Lighting Co..... 4
	" Mfg Co..... 4
	" Public School..... 4
	" Roller Mills..... 4
I	
I	L. C. R. Depots..... 4
K	
K	Kentucky Distill' & Wareho. Co. 5, 6
L	
L	La Rue County Fair Association, 1
	" Produce Co..... 4
	Lynn Milling Co..... 1
M	
M	Mayfield, A. & Co., Distillery..... 2
	Meth. Epis'l Church..... 3
	Morrison & Picknell Roller Mills..... 3
N	
N	Norris, J. N., Sons & Co..... 4
P	
P	Presbyterian Church..... 1
W	
W	Windsor Distillery..... 6

NOTE—House numbers given are arbitrary.



KEY

CONCRETE ROOF
METAL CORNER
METAL ROOF
SHEATHED ROOF
SHEATHED ROOF
SHEATHED ROOF
FRAME PART
OPENING WITH HULL ROOF
IRON ROOF
WOODS & IRON SHEDS
WINDING 1ST STORY
WINDING 2ND STORY
WINDING 3RD STORY
WINDING 4TH STORY
WINDING 5TH STORY
WINDING 6TH STORY
WINDING 7TH STORY
WINDING 8TH STORY
WINDING 9TH STORY
WINDING 10TH STORY
WINDING 11TH STORY
WINDING 12TH STORY
WINDING 13TH STORY
WINDING 14TH STORY
WINDING 15TH STORY
WINDING 16TH STORY
WINDING 17TH STORY
WINDING 18TH STORY
WINDING 19TH STORY
WINDING 20TH STORY
WINDING 21ST STORY
WINDING 22ND STORY
WINDING 23RD STORY
WINDING 24TH STORY
WINDING 25TH STORY
WINDING 26TH STORY
WINDING 27TH STORY
WINDING 28TH STORY
WINDING 29TH STORY
WINDING 30TH STORY
WINDING 31ST STORY
WINDING 32ND STORY
WINDING 33RD STORY
WINDING 34TH STORY
WINDING 35TH STORY
WINDING 36TH STORY
WINDING 37TH STORY
WINDING 38TH STORY
WINDING 39TH STORY
WINDING 40TH STORY
WINDING 41ST STORY
WINDING 42ND STORY
WINDING 43RD STORY
WINDING 44TH STORY
WINDING 45TH STORY
WINDING 46TH STORY
WINDING 47TH STORY
WINDING 48TH STORY
WINDING 49TH STORY
WINDING 50TH STORY

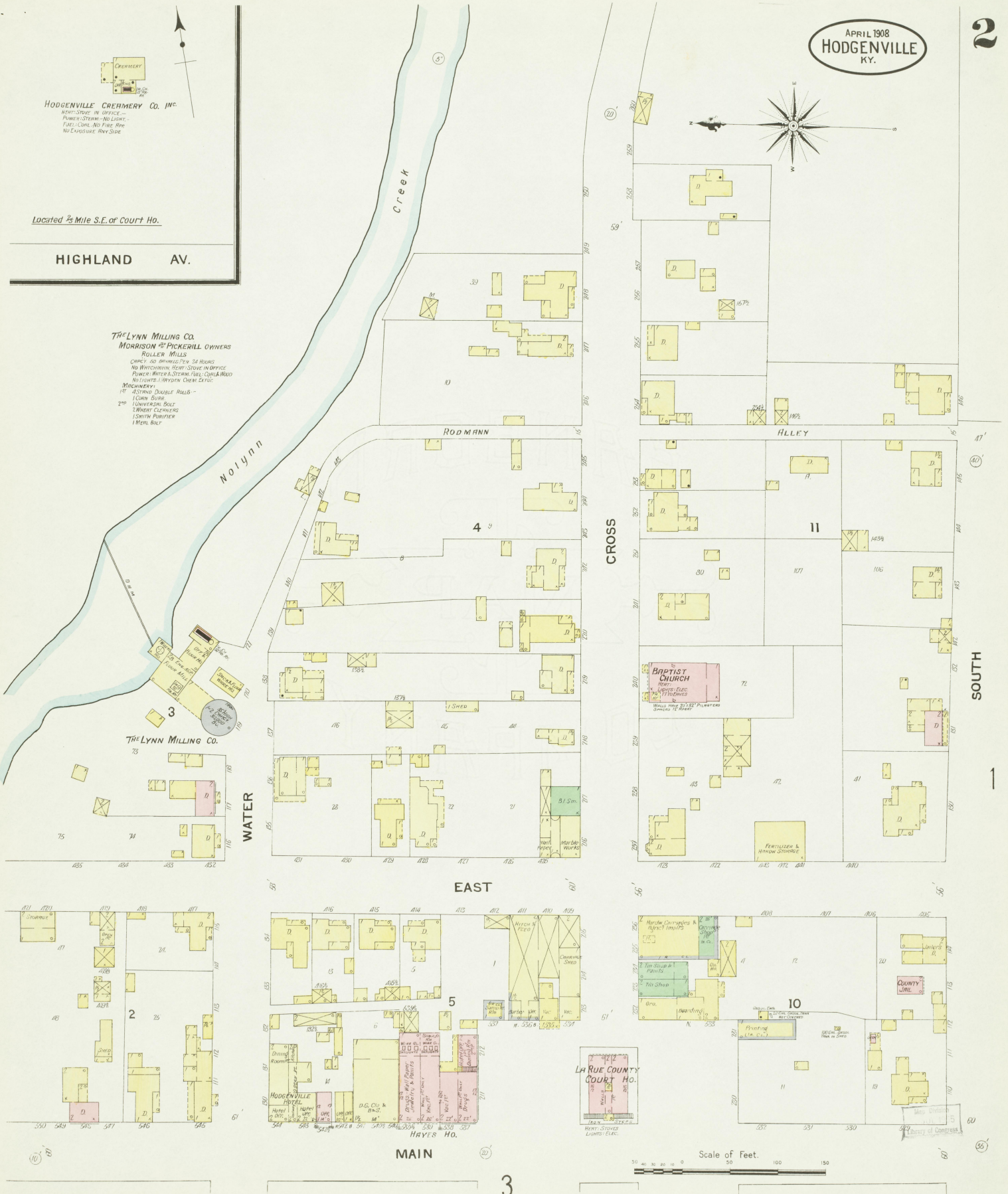


HODGENVILLE CREAMERY CO. INC.
HEAT-STEVE IN OFFICE -
POWER-STEAM NO LIGHT -
FUEL-COAL NO FIRE RISE
NO EXPOSURE ANY SIDE

Located $\frac{1}{2}$ Mile S.E. of Court Ho.

HIGHLAND AV.

THE LYNN MILLING CO.
MORRISON & PICKERILL OWNERS
ROLLER MILLS
CAPACITY 40 BUSHELS PER 24 HOURS
NO WATERSHED, BEAT-STEVE IN OFFICE
POWER-STEAM NO LIGHT, FUEL-COAL
NO LIGHTS, 1500 YDS. OVER-HEAD
MACHINERY
1ST SETTING DOUBLE ROLL -
DOWN BURR
2ND LUNGERSON ROLL
LIGHT CLEANERS
SMITH PUMPER
MEAL BOX



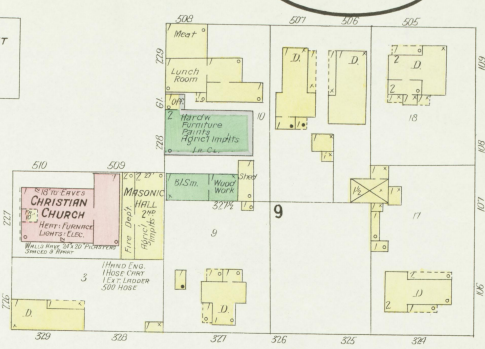
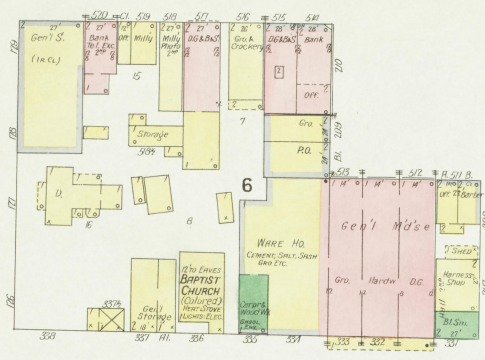
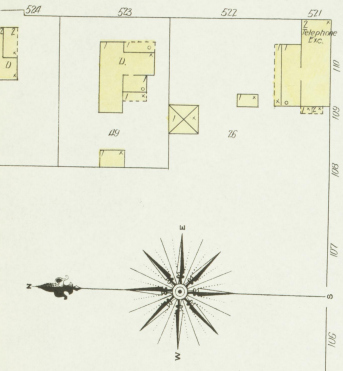
EAST

MAIN

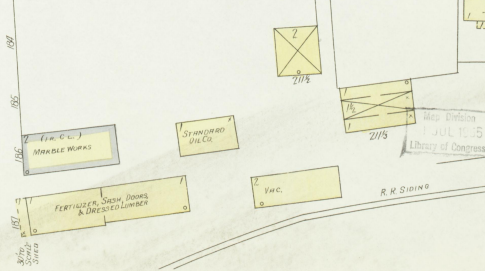
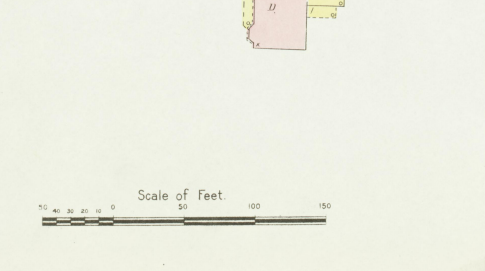
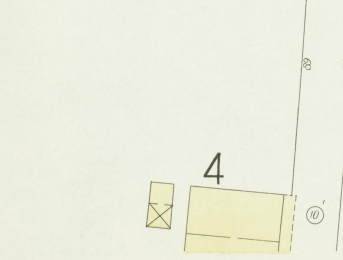
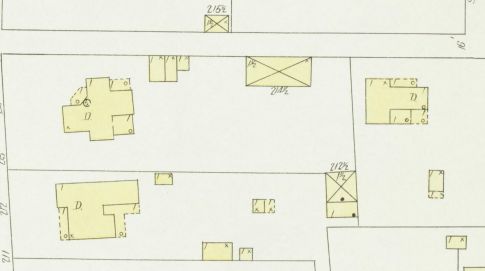
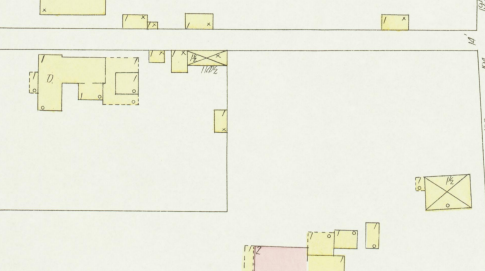
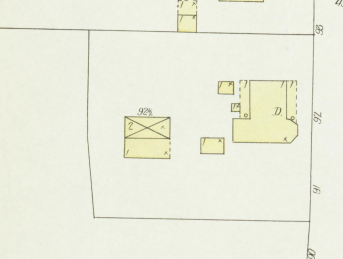
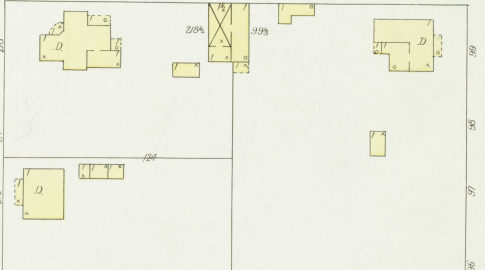
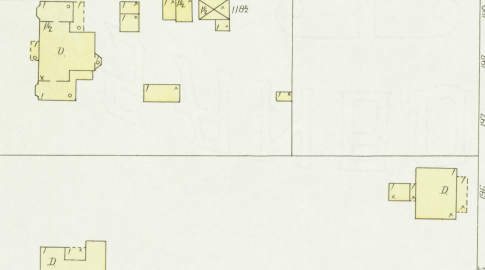
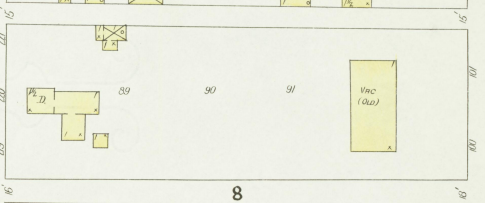
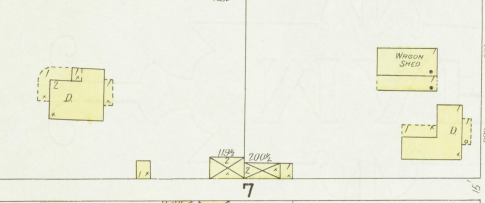
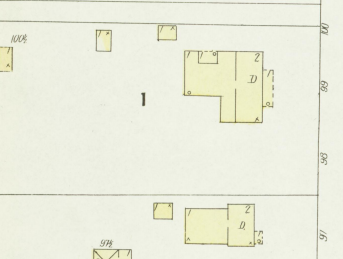
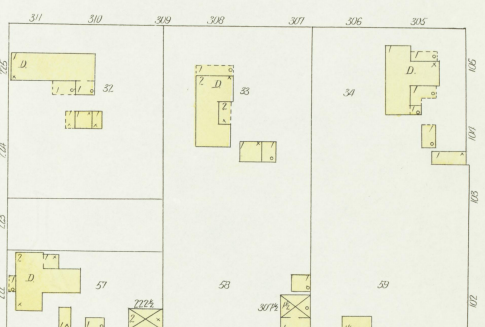
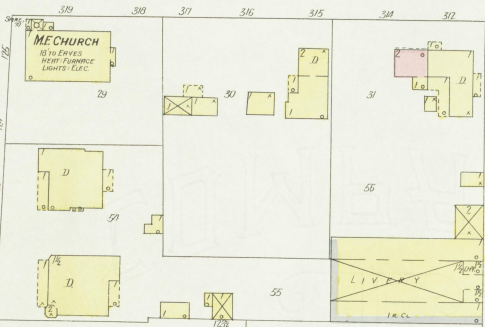
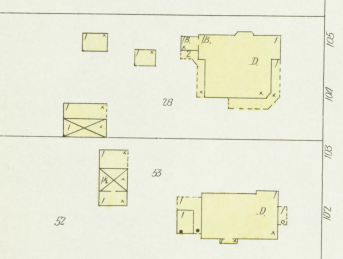
Scale of Feet.

MAIN

2



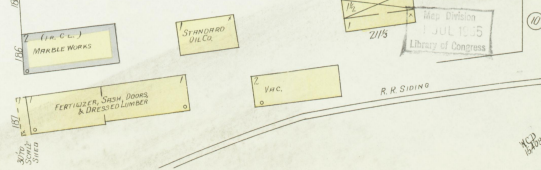
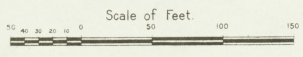
WEST



WATER

CROSS

SOUTH 4



MAIN

SAUNDERS AV.

APRIL 1903
HODGENVILLE
KY.

WEST

SOUTH



R.C. CHURCH
REAR PORTALS
PULPIT 100x50
SHELVES 10x12
SHELVES 10x12
SHELVES 10x12

RESERVE DEPOT
FREIGHT DEPOT

J.M. Jones-Sparks Co.
Putty & Eas

AGRIC. MACH. STOR.

WATER

LA RUE PRODUCE CO.
Wholesale Groceries

HODGENVILLE ROLLER MILLS
S.T. BOYD, JAMES M^{rs} DOWEL AND
E.A. FERRELL, OWNERS.
CAPACITY, 65 BALS PER HOUR.

NO WATCHMAN - POWER, STEAM.
HEAT: STOVE IN OFFICE - FUEL, COAL.
LIGHTS: ELEC. - 4 FIRE PAILS & 2 BALS.

MACHINERY:
1ST 4 STAND DOUBLE ROLLS
1 THREE HIGH CORN MILL - 1 BRAN PCKER -
1 FLOUR BRCKER - 1 SCROLL MILL -
1 WHEAT STEAMER.
2ND 1 PLAN SIFTER - 1 POUFIER -
1 DOUBLE SQUANDER - 2 WHEAT CLEANERS -
1 CORN CLEANER - 1 EXHAUST FAN -
1 DUST COLLECTOR - 1 ROUND REEL -
1 BRAN DUSTER.

HODGENVILLE LIGHTING CO.
J.A. CARTER, OWNER.
POWER & HEAT, STEAM -
FUEL, COAL - LIGHTS, ELEC. -
20' 3/4 HOSE CONNECTED WITH
SMALL WATER TANK.

THE HODGENVILLE M^{fg} CO.
(CLOSED)

NO WATCHMAN.

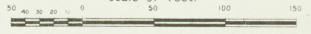
COLLEGE

HODGENVILLE PUBLIC SCHOOL.
HEAT: STOVES - LIGHTS: OIL.



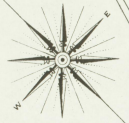
COLLEGE

Scale of Feet.



APRIL 1908
HODGENVILLE
KY.

At **ATHERTONVILLE**
Located 9 Miles E. of Hodgenville



KENTUCKY DISTILLERIES & WAREHOUSE CO.
J.M. ATHERTON & Co., Inc.
Registered Distillery No. 87, 5th District, La Rue Co. Ky.

PRODUCT: BOURBON & RYE WHISKY
CAPACITY: 1200 BOTTLES PER DAY
YIELD: 4 1/2 GALS PER BUSHEL
OPERATED ABOUT 6 MOS. PER YEAR
STEAM DOUBLER - SLDS. RUN IN UNDERGROUND PIPE
FOR NOTE SEE SHEET No. 6

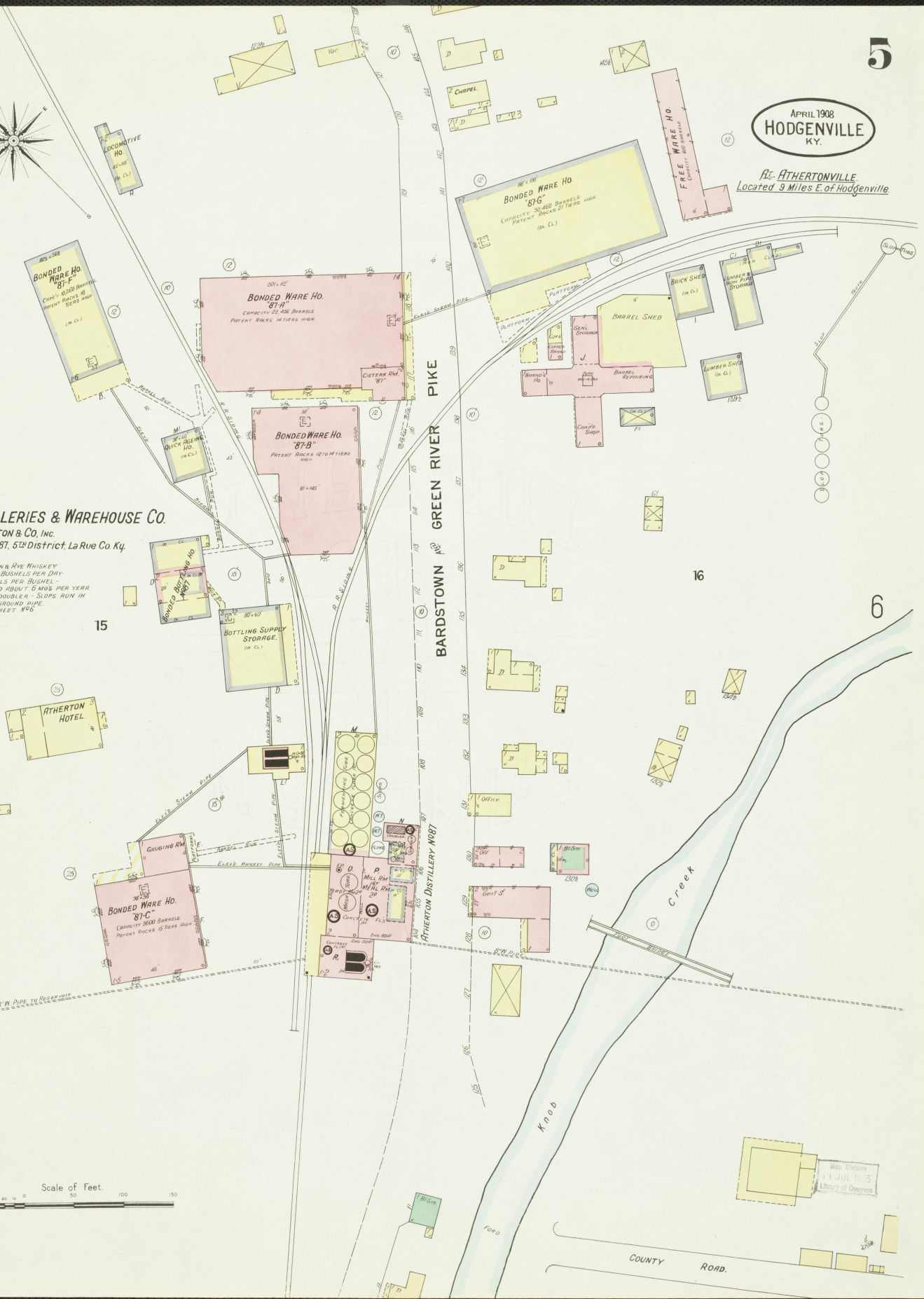
15

16

6

BARDSTOWN GREEN RIVER PIKE

ATHERTON DISTILLERY NO. 87



Scale of Feet.
0 50 100 150

Wm. Johnston
1 JUL 1905
Library of Congress

APRIL 1908
HODGENVILLE
KY.

At ATHONVILLE, Ky.
Located 9 Miles E. of Hodgenville

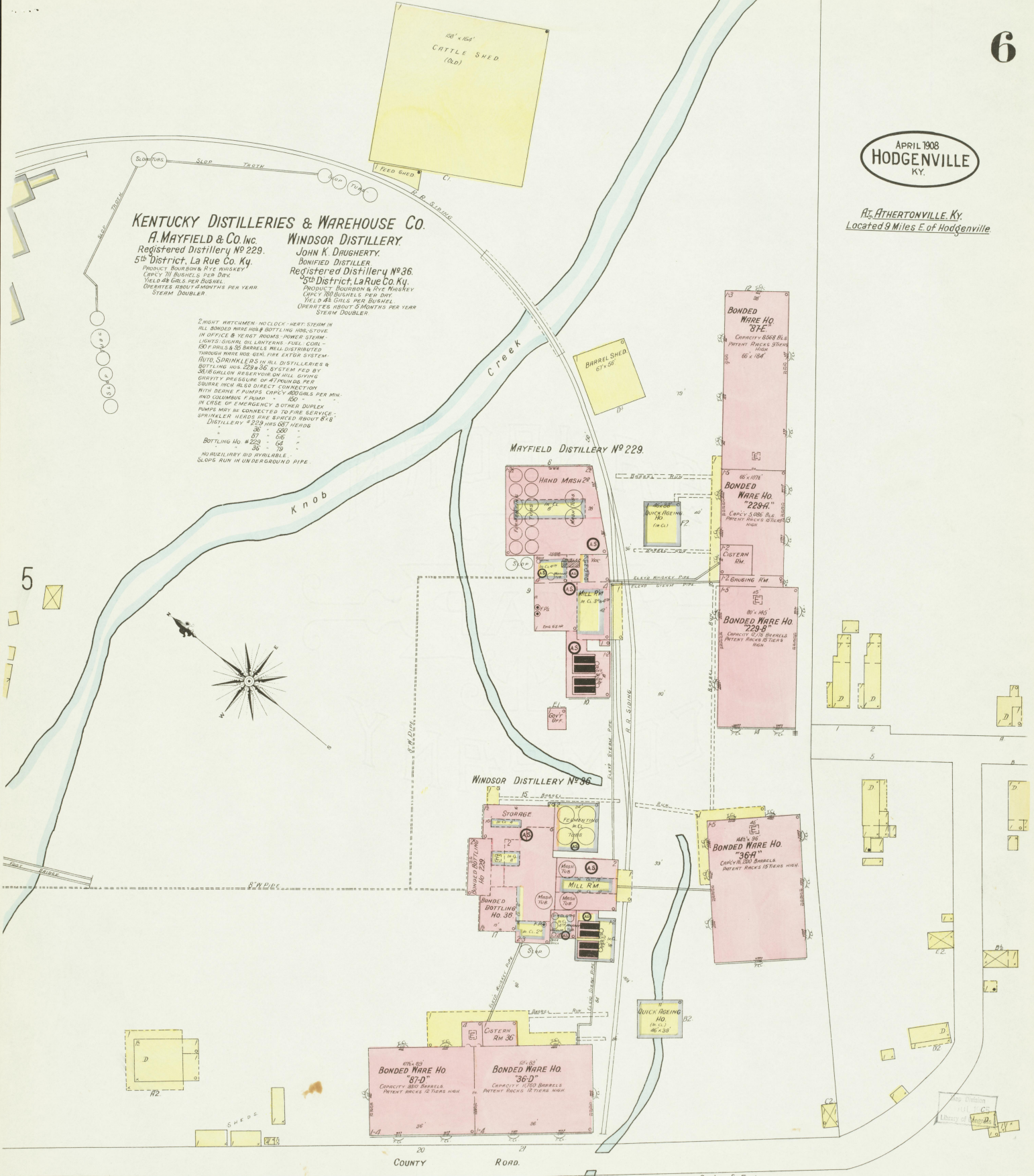
KENTUCKY DISTILLERIES & WAREHOUSE CO.

A. MAYFIELD & Co. Inc.
Registered Distillery No 229.
5th District, La Rue Co. Ky.
PRODUCT: BOURBON & CYE MASHKEY
CAPCY 700 BUSHELS PER DAY
YIELD 48 GALS PER BUSHEL
OPERATES ABOUT 4 MONTHS PER YEAR
STEAM DOUBLER

WINDSOR DISTILLERY

JOHN K. DAUGHERTY.
BONIFIED DISTILLER
Registered Distillery No 36.
5th District, La Rue Co. Ky.
PRODUCT: BOURBON & CYE MASHKEY
CAPCY 100 BUSHELS PER DAY
YIELD 62 GALS PER BUSHEL
OPERATES ABOUT 5 MONTHS PER YEAR
STEAM DOUBLER

2 NIGHT WATCHMEN, NO CLOCK - HEAT STEAM IN ALL BONDED WARE HO'S, BOTTLING HO'S, STOVE IN OFFICE & YEAST ROOMS - POWER STEAM - LIGHTS, CHIMNEY, OIL LAMPERS - FUEL COKE - 100 P PAILS & 20 BARRELS WELL DISTRIBUTED THROUGH WARE HO'S FOR FIRE EXTING. SYSTEM - AUTO. SPRINKLERS IN ALL DISTILLERIES & BOTTLING HO'S 229 & 36 SYSTEM FED BY 3000 GALLON RESERVOIR ON HILL GIVING GRAVITY PRESSURE OF 40 POUNDS PER SQUARE INCH ALSO DIRECT CONNECTION WITH DEANE P PUMPS CAPCY 100 GALS PER MIN. AND COLEMAN PUMPS - 100 - IN CASE OF EMERGENCY 2 OTHER DUPLEX PUMPS MAY BE CONNECTED TO FIRE SERVICE - SPRINKLER HEADS ARE SPACED ABOUT 8' x 8' DISTILLERY 229 HAS 100' HEADS -
- 30 - 100 -
- 07 - 100 -
BOTTLING HO 229 - 04 -
- 30 - 70 -
AUXILIARY HO AVAILABLE
SLOPE RUN IN UNDERGROUND PIPE.



BONDED WARE HO 87-D
CAPCY 200 BARRELS
PATENT RACKS 12 TIERS HIGH

BONDED WARE HO 36-D
CAPCY 1700 BARRELS
PATENT RACKS 12 TIERS HIGH

Scale of Feet.
0 50 100 150

COUNTY ROAD.