



Common sense

**Natural selection**

Throughout my life I have been overwhelmed by the stupidity of ordinary people. Back in the day these stupid people eventually did something stupid and died or were maimed for life because of it. This is the theory of natural selection. In short, it says those not well suited for their environment will eventually become extinct. Some people believe that natural selection has been eradicated by today's medical breakthroughs. I believe that the cause of stupidity is in fact the warning labels designed to prevent stupid things from occurring. If you do not have enough common sense to know not to shower with an electrical appliance you deserve what you get. Here are a few different warnings that should not be necessary.

When flying on an airplane an extensive demonstration is given on seatbelt operation. If you have never used a seatbelt before, or are incompetent enough not to understand how it works, you should only be so lucky as to be hurled from your seat. Perhaps hitting your head will knock something into place.

Coffee is a HOT beverage. Coffee is served HOT. Caution: Coffee may burn. Do you get the point? It's not like it's a very difficult concept, yet there is still the need to remind people that the HOT cup of coffee you ordered is ... you guessed it ... HOT!

CAUTION: Knives are sharp. (Found on a package of kitchen knives.) Um ... duh!

Please remove before driving. (On the back of a cardboard windshield sunshade.) It should read, "If you're dumb enough to drive with this in your window, we hope that you careen into a tree so you don't insure any intelligent people."

This is NOT food! (On a box of rat poison.)

Do NOT eat. (Enclosed with a rubber bouncy ball.)

Do NOT place your hands under lawnmower.

Do NOT cut hedges with lawnmower.

I hope you see my point. For those of you who have no clue what I'm talking about, I hear that showering in your clothes is a sure-fire way to remove wrinkles.

-Jared Whalen  
rail\_editor@hotmail.com

**THE '41'**

Tomorrow's weather



You've gotta be kidding me. I already put away all my sweaters.

**Kentucky Kernel**

VOL. #106 ISSUE #139

ESTABLISHED IN 1892  
INDEPENDENT SINCE 1971

**News tips?**

Call: 257-1915 or write:  
kernel@pop.uky.edu

# TUESDAY KENTUCKY KERNEL

April 17, 2001

<http://www.kykernel.com>

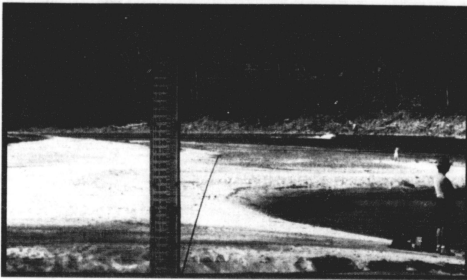


**Get excited**  
Western opens new basketball season | 6

**EARTH DAY SERIES 2001**

WATER, WATER EVERYWHERE...

## Flooded demands



**Short supply: Much of the world's water supply can't be used with current technology**

By Scott Sloan  
STAFF WRITER

The world's growing population has put a strain on a finite supply of freshwater.

Even though three-fourths of the world is water, the vast majority of the water is ocean salt water. Of the freshwater available, most is trapped in frozen glaciers.

The remaining water must sustain a global population of around 6 billion people.

Of this remaining freshwater, a great deal has been polluted beyond treatment or populations have simply outgrown it.

"Many parts of the world have an abundance of water, but it's the quality of water that's the problem," said Jim Kipp, the interim director of the Kentucky Water Research Institute. "Worldwide [water scarcity] is going to be a major issue in the coming years."

Lindell Ormsbee, the interim director of UK's Tracy Farmer Center for the Environment and associate director of the Kentucky Water Research Institute, agreed.

"As the eastern United States continues to grow and develop, there will be a number of problems that have never been dealt with including the scarcity of the water supply," Ormsbee said.

Even though water is a precious commodity by itself, Ormsbee pointed out that the scarcity of freshwater is interconnected with many other issues.

"The availability of water will affect the ability to produce food in large quantities," Ormsbee said. "You can't grow a lot of food without sufficient water."

Ormsbee said the western United States already relies heavily on irrigation to produce food sources and the natural underground aquifers will be unable to recharge if water continues to be pumped from them.

Water is also important for wildlife and to help dilute pollutants that might make it into rivers and streams, Ormsbee said.

Despite the many problems, there are a number of possible solutions to water scarcity, Kipp said.

"One solution, desalination, could convert salt water into potable water.

"We have the technology to make that water available but at a very high cost," Ormsbee said.

Another solution to easing the burden on the global water supply sounds like it has been borrowed from an aluminum can idea: recycling.

Even though most people think of plastic bottles and paper when they hear the word "recycle," more cities are turning to reusing water to ease supply crunches.

A number of opportunities exist to reuse so-called gray water — water not suitable for drinking but which has no human waste or other dangerous substances. This type of water comes from such things as sinks and washing machines, Kipp said.

"A lot of times [it's used] for landscaping purposes ... or to wash your car," he said.

"Generally, [it's] the type of activities that don't require drinking water quality."

The company uses reclaimed water for toilet flushing in company buildings and three large office towers in the city.

The company also has attempted to curb water demand by implementing a progressive rate structure that fines people who overuse water.

Lessick said the rate structure has helped people learn to use water more efficiently.

The rate structure program knows how much landscape a person has on his property and calculates a budget of how much water should be used in a month, Lessick said. Since water use for landscapes is affected by the weather, the program takes the local weather into account when factoring in the budget.

"It calculates how much you should have used," Lessick said. "If you used more than that [amount], you get progressive penalties."

Profit from the penalties helps fund the company's conservation staff, Lessick said.

These are not the only innovative solutions to the water

of UK's Tracy Farmer Center for the Environment and associate director of the Kentucky Water Research Institute.

To address this availability problem, the Lexington-Fayette Urban County Council voted to create a reserve supply of water by raising the height of two Kentucky River locks and dams, from which the city draws its water.

That plan took off when Rep. Ernie Fletcher, R-Ky., of

the Kentucky Water Research Institute, agreed.

Several summer droughts have prompted Lexington officials to address water availability. As this summer approaches, officials have devised a plan to stabilize lock and dam No. 10 on the Kentucky River, at left, as well as raising the water level of lock and dam No. 9. See the bottom story for more information.

CHAS. C. MOOD | KERNEL STAFF

Despite the many problems, there are a number of possible solutions to water scarcity, Kipp said.

"One solution, desalination, could convert salt water into potable water.

"We have the technology to make that water available but at a very high cost," Ormsbee said.

Another solution to easing the burden on the global water supply sounds like it has been borrowed from an aluminum can idea: recycling.

Even though most people think of plastic bottles and paper when they hear the word "recycle," more cities are turning to reusing water to ease supply crunches.

A number of opportunities exist to reuse so-called gray water — water not suitable for drinking but which has no human waste or other dangerous substances. This type of water comes from such things as sinks and washing machines, Kipp said.

"A lot of times [it's used] for landscaping purposes ... or to wash your car," he said.

"Generally, [it's] the type of activities that don't require drinking water quality."

The company uses reclaimed water for toilet flushing in company buildings and three large office towers in the city.

The company also has attempted to curb water demand by implementing a progressive rate structure that fines people who overuse water.

Lessick said the rate structure has helped people learn to use water more efficiently.

The rate structure program knows how much landscape a person has on his property and calculates a budget of how much water should be used in a month, Lessick said. Since water use for landscapes is affected by the weather, the program takes the local weather into account when factoring in the budget.

"It calculates how much you should have used," Lessick said. "If you used more than that [amount], you get progressive penalties."

Profit from the penalties helps fund the company's conservation staff, Lessick said.

These are not the only innovative solutions to the water

of UK's Tracy Farmer Center for the Environment and associate director of the Kentucky Water Research Institute.

To address this availability problem, the Lexington-Fayette Urban County Council voted to create a reserve supply of water by raising the height of two Kentucky River locks and dams, from which the city draws its water.

That plan took off when Rep. Ernie Fletcher, R-Ky., of

See SOLUTION on 2

## Lexington upgrading locks and dams to ease summer droughts

By Scott Sloan  
STAFF WRITER

Several droughts in the 1990s made it apparent that Lexington's growing population needed more water than ever.

"The problem that we have in Central Kentucky is not lack of sufficient volume [of water]; it's having it available when we need it," said Lindell Ormsbee, the interim director

of UK's Tracy Farmer Center for the Environment and associate director of the Kentucky Water Research Institute.

To address this availability problem, the Lexington-Fayette Urban County Council voted to create a reserve supply of water by raising the height of two Kentucky River locks and dams, from which the city draws its water.

That plan took off when Rep. Ernie Fletcher, R-Ky., of

See LOCKS on 2

### What you can do to conserve water

Here's some easy tips for home:  
Don't pour water down a drain if you can use it for another purpose, such as watering a plant.  
Thaw frozen foods in the refrigerator rather than defrosting them with water.  
Put food wastes in a compost pile instead of using the garbage disposal.  
If you are only going to wash two bed sheets, do not set the washing machine load size to large. Using the appropriate water level and load size can help cut down your water bill.  
Check for toilet leaks by adding



Improved flushing mechanisms help new toilets conserve water.



Food coloring to the tank water. If the colored water appears in the bowl, the toilet is leaking. Always remember the "Rule of Five." No more than five inches of water in the tub or five minutes in the shower.



New shower heads are a cheap way to improve water efficiency in the bathroom.

Instead of filling up the tub to take a bath, just take a quick shower and be sure to turn off the water while shampooing your hair.

Water your lawn in the morning or at the evening, before and after the hottest parts of the day to prevent evaporation.

Sources: EPA and Kentucky-American Water Company

**CHANGE**

## Kennedy's places bid to purchase UK Bookstore

By Jermaine Johnson  
STAFF WRITER

UK Bookstore will close its doors this semester and the owners of Kennedy Bookstore will reopen them this summer.

Carol Behr, general manager of Kennedy Bookstore, said Kennedy's was the highest bidder on Monday and will take over the store previously owned by former Gov. Wallace Wilkinson, who filed Chapter 11 bankruptcy in February. According to the National Association of College Stores reports, bids were taken until noon on Monday for all or part of Wallace's college bookstore contracts, inventory and other assets.

Many students question Kennedy's take over of UK Bookstore.

"I hope they [Kennedy] don't raise prices," said George Assibey-Mensah, a business management junior.

According to the Lexington Herald-Leader, Wallace's attorneys devised a plan for UK Bookstore to not buy back textbooks this semester or sell books for the summer term due to a lack of funding.

Officials at the UK Bookstore could not be reached for comment Monday night.

Many students think they will be stuck with books they don't need or be forced to sell their books back for cheaper prices.

"It will be hard returning books for money after exams late in the week," Assibey-Mensah said.

Behr said Kennedy Bookstore will begin buying back books on Monday.

Wallace's contract ends June 30 and Behr said Kennedy's will occupy the space after the contract ends.

"We will be in by July 1, but we're still negotiating," she said.

Behr said both properties still have to compete with Wildcat Textbooks so students need not worry about raised prices.

"We have almost always dealt with the retail price and will continue to do so," Behr said.

Even though Behr discourages concern among students, some UK students doubt Kennedy will keep its prices low.

"Since they will own two of the three bookstores on campus, Kennedy could possibly raise prices in one of the stores and lower them in another, in the process forcing Wildcat out of business," said Keith Hawkins, a political science freshman.

Wendy Tomes, assistant manager of Wildcat Textbooks, said Wildcat is uninformed of the situation and will wait to see how the issue will affect their store.

"We really don't know how it will affect us," she said. "But I expect business to increase — sometimes kids like to support the underdog."

Assistant News Editor Ashley York contributed to this article.

**RECOMMENDATIONS**

## UK officials address benefits at meeting

By Tracy Kershaw  
NEWS EDITOR

In order for staff and faculty to be relieved from the increased cost of family benefit plans, a recommendation from the UK benefits committee must come within in the next two weeks.

The committee met Monday to discuss the heavily protested increases in UK's family benefit plans.

A subcommittee was formed to investigate the issue and bring suggestions back to the full committee. The full committee will make recommendations to George DeBin, vice president of fiscal affairs, who will then send those recommendations to President Charles Wethington.

Beginning in June, employees who buy insurance for themselves and their children, but not their spouse, will increase from \$172.30 a month to \$246 a month. The employee-plus family plan increased 33.5 percent, from \$383.96 a month to \$486 a month.

UK needs to put \$20 million extra toward health care benefits for the 2001-2002 fiscal year, said committee member Bill Reesor, manager of utilities and maintenance at the Physical Plant Division.

"Folks, we've got to get it down," Reesor said at the meeting. "Anyone making \$40,000 or under can't pay this bill without suffering."

UK announced the rates two weeks ago. More than 6,000 staff, faculty and students signed a petition asking that the rates be decreased, and several hundred protested Thursday in the Free Speech Area.

The Board of Trustees will be briefed on the budget, which will reflect the health insurance increase Friday. The budget could be passed at the May or June board meeting.

ALL THE NEWS THAT FITS

# The Low-down

## Board chooses student ad manager

The Kernel board of directors selected Erica Chalk last Thursday as the student advertising manager for the 2001-02 academic year.

Chalk, an integrated strategic communications senior, began working at the Kernel in August 2000.

Deanna Masden, advertising manager for the Kernel, said she recognized Chalk's potential immediately.

"I knew after a few months that she was going to excel," Masden said.

As student advertising manager Chalk will be responsible for organizing and supervising the advertising department and motivating account executives to meet their advertising goals.

Chalk said she is excited about the position. "I feel really excited about the opportunity to be student ad manager and to help build the Kernel and build my experience," Chalk said.

Her co-workers say they are excited, too. Marty Mills, an account executive at the Kernel, said Chalk possessed many qualities that would ensure her success.

"I think she has good leadership abilities, she's a good listener and easy to work with," Mills said.

The Kernel newsroom also says they believe Chalk will succeed. Julie Nelson, managing editor, said Chalk was very confident during the interview with the Kernel board.

"I was very excited to see the board choose her," Nelson said.

I was addicted to the women. I was addicted to the drinking. I was addicted to the drugs ... I've seen it all, done it all."

Former baseball player Darryl Strawberry, 39, baring his soul on "60 Minutes."



**INHALE:** Mystery will be in the air when the French electronic-pop duo, Air, launches a 16-date North American tour on June 14. "It will be sort of a mysterious darkness on stage," Air's Jean-Benoit Dandekel said. "We really want to have a huge volume, with a precise mix. It will be for people who like to smoke some stiffs."



**DEBASER:** It was not a Good Friday for Frank Black and the Catholics. The former Pixies frontman and his band woke up April 13 at a hotel in Lester, Penn., to find their trailer and approximately \$70,000 worth of gear stolen. Black told the Associated Press that some of the vintage equipment was irreplaceable.

praised the remark, while liberals, church leaders and unions have said such comments simply aren't constructive. "How will you motivate the 4 million jobless to find work just by telling them they're lazy?" the head of Germany's Lutheran Church, the Rev. Manfred Kock said. Despite the slowing global economy, Schroeder has repeatedly proclaimed that he's sticking to his promise of reducing German joblessness to 3.5 million by the next national election in 2002 and, if re-elected, to less than 3 million by 2005.

## Trial of ex-Klansman begins

BIRMINGHAM, Ala. — Several civil rights-era cases have been revived in recent years, but few have touched hearts like the 1963 murder of four black girls, killed when a bomb blast shattered the exterior wall of a church bathroom where they were tiding up for worship. On Monday, the infamous case was to return to public scrutiny with the start of jury selection in the trial of former Ku Klux Klansman Thomas Blanton Jr., one of four men suspected of planting dynamite in the church. Blanton, 62, has pleaded innocent and it is unclear whether he will testify. If convicted, he could receive a maximum sentence of life imprisonment. The explosion at the Sixteenth Street Baptist Church killed Denise Mc-Nair, 11, and three 14-year-olds, Addie Mae Collins, Cynthia Wesley and Carole Robertson on Sept. 15, 1963.

## Killers are icons to some, researchers say

DENVER — Before 13-year-old Seth Trickey shot and wounded five classmates at an Oklahoma middle school, a psychiatrist testified, he wondered what it was like to be in the shoes of the Columbine killers. When Al DeGuzman was charged with stockpiling 60 homemade bombs to assault a California junior college, police said his Web site listed one of his hobbies as worshipping "Eric Harris and Dylan Klebold, as well as other mass murderers." Nearly two years after the Columbine High School shootings, the killers have become cultural icons to some, researchers say. The massacre has been blamed in part for at least four subsequent school attacks and three alleged plots aimed at schools. At least 60 other threats mentioning Columbine have been reported worldwide.

## Holocaust survivors to retrace march

ST. PETERSBURG, Fla. — Viola Baras trembles when she thinks of the journey back to Auschwitz. This time she will be walking, willingly, and not riding in a boxcar stained with the stench of death. Baras was sent to the Nazi death camp as a prisoner in 1944. Now, at 73, she is taking part in a March of the Living to retrace those steps with several thousand Jewish teen-agers from around the world, along with a handful of Holocaust survivors and educators. About 3,000 Jewish high school juniors and seniors from 25 countries were to make the two-week trip to Poland and Israel. On Thursday, the group will gather for a two-mile silent march, retracing the steps Holocaust victims were forced to take from the Auschwitz concentration camp to the gas chambers of Birkenau.

Compiled from wire reports.

## SOLUTION

Continued from page 1

scarcity problem.

In fact, Kentucky boasts one of the most useful ideas that utilizes the abandoned coal mines of Eastern Kentucky.

Ormsbee said the Kentucky Geological Survey has done research into the feasibility of extracting water from these mines.

"You may have old abandoned mines that over time fill up with ground water," he said. "They basically become very large reservoirs that may be able to supply water for communities."

Ormsbee said the mines are an easily accessible source of water that can help sustain a small community without

any high treatment costs attached.

"There may be some minimal amount of treatment, but it wouldn't be as much as if you were using a surface source such as a lake ... where you can get pollutants and have to separate them from the water," Ormsbee said. "All you typically need to do is chlorinate it."

The water quality would not be a great deal different since most rural populations use well water, according to Ormsbee.

"This supply of water could lower water costs in the eastern part of the state, where residents typically buy bottled water to drink rather than drinking the groundwater," Kipp said.

"Right now, you buy bottled drinking water and it's nearly the price of gasoline," he said.

## LOCKS

Continued from page 1

the 6th congressional district, earmarked nearly \$24 million in federal funding for the project. Federal money will pay for most of the project, the state will pick up 20 percent of the tab.

With federal funds and participation came a mandate to perform an environmental impact statement, a report that has yet to be released but will examine environmental and other effects of raising the dam.

If the report recommends raising the dam by four feet, the state would be responsible for acquiring property for the addition, said Stephen Reeder, director of the Kentucky River Authority.

Before the dam can be raised, the Army Corps of Engineers, which oversees the project, must stabilize Kentucky River lock and dam No. 10. Even though Lexington draws water from lock and dam No. 9, the water in No. 10 feeds No. 9, Reeder said.

Gerard Edelen, project manager for the Army Corps of Engineers, received a report about the stabilization of lock and dam No. 10 from a local engineering firm. The report recommended moving ahead with stabilizing the dam and then raising it, but the corps must do the environmental study first, he said.

"If there are three or four methods of accomplishing something, we'll look at costs, benefits, reliability and if there's risk associated with any project," Edelen said.

## GOOFS

### Corrections

An item in Monday's caption for the Earth Day series should have labeled the subject of a front page photo as an Indian ceremonial mound.

To report an error call The Kentucky Kernel at 257-1915.

**Birthday Cake.....\$20**  
**12 Pack.....\$12**  
**Seeing a picture of yourself in the Kentucky Kernel on your 21st birthday.....priceless.**  
**Happy Birthday!**  
**Allyson Stacy!!!**

**REMINDER**  
 ACADEMIC EXCELLENCE SCHOLARSHIPS  
 for the 2001-2002 academic year  
 \$1000 awards

**Applicants must:**

- be currently enrolled on the Lexington Campus
- have a full-time undergraduate status
- have completed at least 12 semester hours of UK with a cumulative GPA of 3.50 by the end of spring semester 2001
- not be receiving another scholarship from the Merit Scholarship Office for the 2001-2002 academic year

**Deadline: Friday, April 20, 2001**

Note: Students currently applying to or enrolled in the professional programs in the Colleges of Allied Health Professions, Nursing, and Pharmacy are not eligible and should contact their respective departments for scholarship information.

For application information contact:  
 Merit Scholarship Office  
 211 Fankhauser Building  
 257-4198

**FOCUS GROUP UK**  
**FREE FOOD!**

Here's your chance to tell us what you think!  
 Any UK or LCC Student who has used University Health Service at least one time is invited to give your feedback about the Health Service in a group setting. Space is limited so call immediately!

**Thursday, April 19, 2001**  
 W.T. Young Library Gallery  
 5:00 pm to 6:00 pm  
 Food from Ovid's

To participate, please call  
 323-5823, ext. 281  
 or email:  
 mlbrin00@pop.uky.edu

**UK Student Health Advisory Council and UK CARES**  
 present...

**Body Images & Health Fair**

- Ask the dietitian
- Chair Massage
- Posture/Backpack Evaluation
- Life-Size Barbie/Body Images
- Blood Pressure Screenings
- Sexual Health Information
- Lung Health/Quit Smoking
- Alcohol Info/ "The Cause"
- Cancer Information
- Organ Donor Information
- Campus Safety
- and MORE!

**Wednesday, April 18**  
**10 a.m. to 2 p.m.**

**Student Center Patio Addition**

For more information, call  
 323-5823, ext 281 or 238

**Take a Professor Home Through the Mail**

Take a course through the mail, call Independent Study program.

**The Independent Study Program**

Room 1 Frazee Hall • 859-257-3466

1-800-432-0963  
 http://www.uky.edu/ISP

**SUMMER SPLASH!**  
 GET A GIFT CERTIFICATE WITH EACH SIGNED LEASE!\*

**CALL 258-2039**  
 High speed internet access expected by fall 2001!

**FEATURING:**  
 fully furnished 2 & 4 bedroom apartments

- ON BUS ROUTE
- PRIVATE BEDROOMS
- INDIVIDUAL LEASES
- ALARM SYSTEMS
- FREE PARKING
- FULLY EQUIPPED KITCHEN
- WASHER & DRYER
- FITNESS CENTER/REC ROOM
- SWIMMING POOL/HOT TUB
- TENNIS, VOLLEYBALL & BASKETBALL
- COMPUTER LAB, COPIER & FAX AVAILABLE

**UNIVERSITY COMMONS**

**APARTMENTS**  
 845 RED MILE ROAD  
 mgratuclex@qx.net  
 www.capstone-dev.com

**Mon - Fri 9-6**  
**Sat 10-4 Sun 1-5**

**\$99 MOVES YOU IN!**

The Lexington  
 Luxury Apartment Homes

1, 2 & 3 Bedroom Apartments and Townhomes Close to Campus

**266-8811**  
 3308 Montavista  
 Ask about our UK discounts!

MUSICALS

## History made fun with new musical

**Help me I've fallen:** In spite of superfluous dream sequences, 'Floyd Collins' a success

By Patrick Avery  
ASSISTANT SCENE EDITOR

My high school once put on a production of "West Side Story." And in that production there was a dream sequence that involved ballet dancers that seemed really out of place. From then on I cursed musicals that had pointless dream sequences that made me laugh rather than add some extra significance to the story.

So after watching "Floyd Collins," UK's latest theater production, it took a while to look past the two useless dream sequences between the main character and his family. But the good news is that I dropped my prejudices and found much to like about this production.

Floyd Collins was a cave worker who found himself trapped in a cave near Mammoth Cave, Ky.

The story became a national media portrait of a man whose dreams were crushed when his foot got stuck under a rock. The play, what some might consider a country musical, transcends any genre expectations. "Floyd Collins" is a story that when we stop a minute to put ourselves in his shoes, we feel compassion and sympathy for the main character.

Mich Logsdon plays the title role with great passion and conviction. Despite an open set that doesn't really convey what it is like to be in a cave, he makes the audience believe that he is actually trapped.

Both Collins shines in her performance as Floyd's sister. Her voice was one of the highlights of the show.

The casting problem lies with Floyd's brother Homer. Nathan Munsun is a great

singer, but is out of place in this musical. His voice is best on the opera stage.

The set is outstanding even though it leaves everything completely up to the imagination. Some may say that is what plays are supposed to do, but it is nice when some of the sets completely transport you to a certain time and place.

The lighting worked extremely well. Certain backgrounds that look like sunsets and a scene where the stars are in the sky and a light comes from the heavens are breathtaking.

The music numbers, directed by Everett McCorvey, are for the most part excellent. The standout number is "Is That Remarkable," where three reporters try to get the scoop on Floyd's trapping.

You have to give director James Rodgers credit when it comes to making a daring attempt at good theater. And for the most part, he succeeds.



### Mas sabor

Juan De Marcos Afro-Cuban All-Stars will be performing at 8 p.m. Wednesday in the Student Center Grand Ballroom. Tickets are available at Ticketmaster or by calling 257-8427.

PHOTO FURNISHED



### Punk is dead

Joey Ramone, lead singer of the seminal punk band The Ramones, died Easter Sunday of lymphatic cancer. The Ramones, formed in 1974, are credited by many as the forefathers of punk music.

PHOTO FURNISHED

So don't be sad, 'cause I'll be there/Don't be sad at all."

- JOEY RAMONE, MUSICIAN



**SDC would like to congratulate the Partners for Excellence winners:**

- **Social Fraternity:** Phi Kappa Psi
- **Social Sorority:** Pi Beta Phi
- **Non-social Fraternity:** Phi Sigma Pi
- **Student Organization:** National Honor Fraternity
- **Student American Dental Hygienist Association (LCC) and Athena Club (LCC)**

We would like to thank all of our applicants for their contributions to UK and our community:

- Suzie of Heteop
- United Students Against Sweatshops
- Society for Prevention of Cruelty of Animals
- Leftist Student Union
- Feminist Alliance
- ACLU
- Green Thumb
- Students for the Green Party
- Alpha Phi Omega
- Amnesty International UK
- Summit Newspaper Organization
- Phi Alpha Theta
- Chi Omega

## CROSS CREEK

**Comfortable, Affordable Living**

- Efficiencies
- 1 Bedrooms
- 2 Bedrooms

2 Bedroom Townhouses available.  
Call today and ask about our specials!  
**273-3471**  
3489 Lansdowne Dr.

## TIME FOR AN CHANGE

Kitty O' Shea's

**Live Music with TRACE**

&  
**\$3 pitchers**  
(no wristband required)

**Must Be 21**  
**255-3078**

**S.O.C.**  
Student Organizations Center

**Current registration expires May 1, 2001!**  
*Before you start thinking about the summer road trip, don't forget your check list!*

**Check List**

- ✓ Pack
- ✓ Turn in paper
- ✓ Sell books
- ✓ Turn in U.K. student organization re-registration form for the 2001-2002 academic year
- ✓ Get Friends' e-mail addresses

All student organizations need to be registered to participate in university activities and take advantage of many free resources!  
For listing of services and registered organizations, check out the S.O.C. web pages:  
<http://www.uk.edu/StudentCenter/StudentOrganizations>

**STUDENT ORGANIZATIONS CENTER**  
Room 106 Student Center  
Please call 257-1099 for questions or assistance.

**DON'T PAY HIGH MILL PRICES!**

**STERLING SILVER JEWELRY**

**FREE ENGRAVING**  
(w/ purchase)

- 20% OFF w/ EYEAENT ID
- We engrave items purchased elsewhere

**Batmark Engravables**  
258 South R.E.  
Herald Two Mill off Nolansville Rd.  
277-7279

## KAPPASTA

**APRIL 17 4:30-8 KAPPA HOUSE 238 E. MAXWELL**

**Kappa's Secret Recipe!**

- 140 Crazy Kappas
- 300 Jars of Spaghetti Sauce
- 100 lbs. of Noodles
- 1 Awesome Band: Winslow's Vehicle
- A Generous Dose of Giveaways & Prizes

Yields:  
1 rockin' rollin', noodle shakin', meatball lovin', all you can eat spaghetti dinner!

\*All proceeds benefit Cardinal Hill Rehabilitation Center\*

## Campus Calendar

April 16 - April 22, 2001

The Campus Calendar is produced by the Office of Student Activities. Registered Student Orgs. and UK Depts. can submit information for FREE online ONE WEEK PRIOR to the MONDAY information is posted at: <http://www.uk.edu/CampusCalendar>  
Call 257-8467 for more information.

Tues 17	Wed 18
<p><b>ACADEMIC</b> Workshop for Internships &amp; Shadowing, 3-5pm, 101 Student Bldg. Master Year Time Workshop, 10-10:30am, 201 Foye Hall</p> <p><b>MEETINGS</b> Phi Kappa Psi, 7:30pm, Baptist St. Union Chapel Phi Sigma Pi, 8:30pm, 228 St. Union Chapel Phi Beta Phi, 8:30pm, 228 St. Union Chapel Phi Chi, 8:30pm, 228 St. Union Chapel Phi Kappa Psi, 8:30pm, 228 St. Union Chapel Phi Chi, 8:30pm, 228 St. Union Chapel Phi Chi, 8:30pm, 228 St. Union Chapel Phi Chi, 8:30pm, 228 St. Union Chapel</p> <p><b>SPORTS</b> UK Rugby Practice, 6-8pm, Club Sports Field UK Soccer Club Practice, 6-8pm, Alumni Gym, 2nd Flr, 211 Student Ctr.</p> <p><b>SPECIAL EVENTS</b> Partners for Solidarity: An Israeli Perspective on the Current Cycle of Violence, Jewish Stud. Org., 8pm, 211 Student Ctr.</p> <p><b>ARTS/MOVIES</b> UK Musical Theatre, 8pm, Gospel Theatre, call 257-4929 for tickets UK Musical Theatre, 8pm, Gospel Theatre, call 257-4929 for tickets</p> <p><b>INTRAMURALS/RECREATION</b> Tennis Doubles &amp; Mixed Doubles Round Robin, 4pm, 145 South St.</p> <p><b>MEETINGS</b> Phi Kappa Psi, 7:30pm, Baptist St. Union Chapel Phi Sigma Pi, 8:30pm, 228 St. Union Chapel Phi Beta Phi, 8:30pm, 228 St. Union Chapel Phi Chi, 8:30pm, 228 St. Union Chapel Phi Chi, 8:30pm, 228 St. Union Chapel Phi Chi, 8:30pm, 228 St. Union Chapel Phi Chi, 8:30pm, 228 St. Union Chapel</p> <p><b>SPORTS</b> UK Rugby Practice, 6-8pm, Club Sports Field UK Soccer Club Practice, 6-8pm, Alumni Gym, 2nd Flr, 211 Student Ctr.</p> <p><b>LECTURES</b> "The Green Revolution: A History of the Green Revolution," 7pm, The Green Revolution: A History of the Green Revolution, 7pm, The Green Revolution: A History of the Green Revolution</p> <p><b>ARTS/MOVIES</b> UK Musical Theatre, 8pm, Gospel Theatre, call 257-4929 for tickets UK Musical Theatre, 8pm, Gospel Theatre, call 257-4929 for tickets</p> <p><b>INTRAMURALS/RECREATION</b> Tennis Doubles &amp; Mixed Doubles Round Robin, 4pm, 145 South St.</p> <p><b>MEETINGS</b> Phi Kappa Psi, 7:30pm, Baptist St. Union Chapel Phi Sigma Pi, 8:30pm, 228 St. Union Chapel Phi Beta Phi, 8:30pm, 228 St. Union Chapel Phi Chi, 8:30pm, 228 St. Union Chapel Phi Chi, 8:30pm, 228 St. Union Chapel Phi Chi, 8:30pm, 228 St. Union Chapel Phi Chi, 8:30pm, 228 St. Union Chapel</p> <p><b>SPORTS</b> UK Rugby Practice, 6-8pm, Club Sports Field UK Soccer Club Practice, 6-8pm, Alumni Gym, 2nd Flr, 211 Student Ctr.</p> <p><b>LECTURES</b> "The Green Revolution: A History of the Green Revolution," 7pm, The Green Revolution: A History of the Green Revolution, 7pm, The Green Revolution: A History of the Green Revolution</p> <p><b>ARTS/MOVIES</b> UK Musical Theatre, 8pm, Gospel Theatre, call 257-4929 for tickets UK Musical Theatre, 8pm, Gospel Theatre, call 257-4929 for tickets</p> <p><b>INTRAMURALS/RECREATION</b> Tennis Doubles &amp; Mixed Doubles Round Robin, 4pm, 145 South St.</p>	<p><b>ACADEMIC</b> Workshop for Internships &amp; Shadowing, 3-5pm, 101 Student Bldg. Master Year Time Workshop, 10-10:30am, 201 Foye Hall</p> <p><b>MEETINGS</b> Phi Kappa Psi, 7:30pm, Baptist St. Union Chapel Phi Sigma Pi, 8:30pm, 228 St. Union Chapel Phi Beta Phi, 8:30pm, 228 St. Union Chapel Phi Chi, 8:30pm, 228 St. Union Chapel Phi Kappa Psi, 8:30pm, 228 St. Union Chapel Phi Chi, 8:30pm, 228 St. Union Chapel Phi Chi, 8:30pm, 228 St. Union Chapel Phi Chi, 8:30pm, 228 St. Union Chapel</p> <p><b>SPORTS</b> UK Rugby Practice, 6-8pm, Club Sports Field UK Soccer Club Practice, 6-8pm, Alumni Gym, 2nd Flr, 211 Student Ctr.</p> <p><b>SPECIAL EVENTS</b> Partners for Solidarity: An Israeli Perspective on the Current Cycle of Violence, Jewish Stud. Org., 8pm, 211 Student Ctr.</p> <p><b>ARTS/MOVIES</b> UK Musical Theatre, 8pm, Gospel Theatre, call 257-4929 for tickets UK Musical Theatre, 8pm, Gospel Theatre, call 257-4929 for tickets</p> <p><b>INTRAMURALS/RECREATION</b> Tennis Doubles &amp; Mixed Doubles Round Robin, 4pm, 145 South St.</p> <p><b>MEETINGS</b> Phi Kappa Psi, 7:30pm, Baptist St. Union Chapel Phi Sigma Pi, 8:30pm, 228 St. Union Chapel Phi Beta Phi, 8:30pm, 228 St. Union Chapel Phi Chi, 8:30pm, 228 St. Union Chapel Phi Chi, 8:30pm, 228 St. Union Chapel Phi Chi, 8:30pm, 228 St. Union Chapel Phi Chi, 8:30pm, 228 St. Union Chapel</p> <p><b>SPORTS</b> UK Rugby Practice, 6-8pm, Club Sports Field UK Soccer Club Practice, 6-8pm, Alumni Gym, 2nd Flr, 211 Student Ctr.</p> <p><b>LECTURES</b> "The Green Revolution: A History of the Green Revolution," 7pm, The Green Revolution: A History of the Green Revolution, 7pm, The Green Revolution: A History of the Green Revolution</p> <p><b>ARTS/MOVIES</b> UK Musical Theatre, 8pm, Gospel Theatre, call 257-4929 for tickets UK Musical Theatre, 8pm, Gospel Theatre, call 257-4929 for tickets</p> <p><b>INTRAMURALS/RECREATION</b> Tennis Doubles &amp; Mixed Doubles Round Robin, 4pm, 145 South St.</p>
<p style="text-align: center;"><b>Thurs 19</b></p> <p><b>ACADEMIC</b> Workshop for Internships &amp; Shadowing, 3-5pm, 101 Student Bldg. Master Year Time Workshop, 10-10:30am, 201 Foye Hall</p> <p><b>MEETINGS</b> Phi Kappa Psi, 7:30pm, Baptist St. Union Chapel Phi Sigma Pi, 8:30pm, 228 St. Union Chapel Phi Beta Phi, 8:30pm, 228 St. Union Chapel Phi Chi, 8:30pm, 228 St. Union Chapel Phi Kappa Psi, 8:30pm, 228 St. Union Chapel Phi Chi, 8:30pm, 228 St. Union Chapel Phi Chi, 8:30pm, 228 St. Union Chapel Phi Chi, 8:30pm, 228 St. Union Chapel</p> <p><b>SPORTS</b> UK Rugby Practice, 6-8pm, Club Sports Field UK Soccer Club Practice, 6-8pm, Alumni Gym, 2nd Flr, 211 Student Ctr.</p> <p><b>SPECIAL EVENTS</b> Partners for Solidarity: An Israeli Perspective on the Current Cycle of Violence, Jewish Stud. Org., 8pm, 211 Student Ctr.</p> <p><b>ARTS/MOVIES</b> UK Musical Theatre, 8pm, Gospel Theatre, call 257-4929 for tickets UK Musical Theatre, 8pm, Gospel Theatre, call 257-4929 for tickets</p> <p><b>INTRAMURALS/RECREATION</b> Tennis Doubles &amp; Mixed Doubles Round Robin, 4pm, 145 South St.</p> <p><b>MEETINGS</b> Phi Kappa Psi, 7:30pm, Baptist St. Union Chapel Phi Sigma Pi, 8:30pm, 228 St. Union Chapel Phi Beta Phi, 8:30pm, 228 St. Union Chapel Phi Chi, 8:30pm, 228 St. Union Chapel Phi Chi, 8:30pm, 228 St. Union Chapel Phi Chi, 8:30pm, 228 St. Union Chapel Phi Chi, 8:30pm, 228 St. Union Chapel</p> <p><b>SPORTS</b> UK Rugby Practice, 6-8pm, Club Sports Field UK Soccer Club Practice, 6-8pm, Alumni Gym, 2nd Flr, 211 Student Ctr.</p> <p><b>LECTURES</b> "The Green Revolution: A History of the Green Revolution," 7pm, The Green Revolution: A History of the Green Revolution, 7pm, The Green Revolution: A History of the Green Revolution</p> <p><b>ARTS/MOVIES</b> UK Musical Theatre, 8pm, Gospel Theatre, call 257-4929 for tickets UK Musical Theatre, 8pm, Gospel Theatre, call 257-4929 for tickets</p> <p><b>INTRAMURALS/RECREATION</b> Tennis Doubles &amp; Mixed Doubles Round Robin, 4pm, 145 South St.</p>	<p style="text-align: center;"><b>Fri 20</b></p> <p><b>ACADEMIC</b> Workshop for Internships &amp; Shadowing, 3-5pm, 101 Student Bldg. Master Year Time Workshop, 10-10:30am, 201 Foye Hall</p> <p><b>MEETINGS</b> Phi Kappa Psi, 7:30pm, Baptist St. Union Chapel Phi Sigma Pi, 8:30pm, 228 St. Union Chapel Phi Beta Phi, 8:30pm, 228 St. Union Chapel Phi Chi, 8:30pm, 228 St. Union Chapel Phi Kappa Psi, 8:30pm, 228 St. Union Chapel Phi Chi, 8:30pm, 228 St. Union Chapel Phi Chi, 8:30pm, 228 St. Union Chapel Phi Chi, 8:30pm, 228 St. Union Chapel</p> <p><b>SPORTS</b> UK Rugby Practice, 6-8pm, Club Sports Field UK Soccer Club Practice, 6-8pm, Alumni Gym, 2nd Flr, 211 Student Ctr.</p> <p><b>SPECIAL EVENTS</b> Partners for Solidarity: An Israeli Perspective on the Current Cycle of Violence, Jewish Stud. Org., 8pm, 211 Student Ctr.</p> <p><b>ARTS/MOVIES</b> UK Musical Theatre, 8pm, Gospel Theatre, call 257-4929 for tickets UK Musical Theatre, 8pm, Gospel Theatre, call 257-4929 for tickets</p> <p><b>INTRAMURALS/RECREATION</b> Tennis Doubles &amp; Mixed Doubles Round Robin, 4pm, 145 South St.</p> <p><b>MEETINGS</b> Phi Kappa Psi, 7:30pm, Baptist St. Union Chapel Phi Sigma Pi, 8:30pm, 228 St. Union Chapel Phi Beta Phi, 8:30pm, 228 St. Union Chapel Phi Chi, 8:30pm, 228 St. Union Chapel Phi Chi, 8:30pm, 228 St. Union Chapel Phi Chi, 8:30pm, 228 St. Union Chapel Phi Chi, 8:30pm, 228 St. Union Chapel</p> <p><b>SPORTS</b> UK Rugby Practice, 6-8pm, Club Sports Field UK Soccer Club Practice, 6-8pm, Alumni Gym, 2nd Flr, 211 Student Ctr.</p> <p><b>LECTURES</b> "The Green Revolution: A History of the Green Revolution," 7pm, The Green Revolution: A History of the Green Revolution, 7pm, The Green Revolution: A History of the Green Revolution</p> <p><b>ARTS/MOVIES</b> UK Musical Theatre, 8pm, Gospel Theatre, call 257-4929 for tickets UK Musical Theatre, 8pm, Gospel Theatre, call 257-4929 for tickets</p> <p><b>INTRAMURALS/RECREATION</b> Tennis Doubles &amp; Mixed Doubles Round Robin, 4pm, 145 South St.</p>
<p style="text-align: center;"><b>Sat 21</b></p> <p><b>ACADEMIC</b> Workshop for Internships &amp; Shadowing, 3-5pm, 101 Student Bldg. Master Year Time Workshop, 10-10:30am, 201 Foye Hall</p> <p><b>MEETINGS</b> Phi Kappa Psi, 7:30pm, Baptist St. Union Chapel Phi Sigma Pi, 8:30pm, 228 St. Union Chapel Phi Beta Phi, 8:30pm, 228 St. Union Chapel Phi Chi, 8:30pm, 228 St. Union Chapel Phi Kappa Psi, 8:30pm, 228 St. Union Chapel Phi Chi, 8:30pm, 228 St. Union Chapel Phi Chi, 8:30pm, 228 St. Union Chapel Phi Chi, 8:30pm, 228 St. Union Chapel</p> <p><b>SPORTS</b> UK Rugby Practice, 6-8pm, Club Sports Field UK Soccer Club Practice, 6-8pm, Alumni Gym, 2nd Flr, 211 Student Ctr.</p> <p><b>SPECIAL EVENTS</b> Partners for Solidarity: An Israeli Perspective on the Current Cycle of Violence, Jewish Stud. Org., 8pm, 211 Student Ctr.</p> <p><b>ARTS/MOVIES</b> UK Musical Theatre, 8pm, Gospel Theatre, call 257-4929 for tickets UK Musical Theatre, 8pm, Gospel Theatre, call 257-4929 for tickets</p> <p><b>INTRAMURALS/RECREATION</b> Tennis Doubles &amp; Mixed Doubles Round Robin, 4pm, 145 South St.</p> <p><b>MEETINGS</b> Phi Kappa Psi, 7:30pm, Baptist St. Union Chapel Phi Sigma Pi, 8:30pm, 228 St. Union Chapel Phi Beta Phi, 8:30pm, 228 St. Union Chapel Phi Chi, 8:30pm, 228 St. Union Chapel Phi Chi, 8:30pm, 228 St. Union Chapel Phi Chi, 8:30pm, 228 St. Union Chapel Phi Chi, 8:30pm, 228 St. Union Chapel</p> <p><b>SPORTS</b> UK Rugby Practice, 6-8pm, Club Sports Field UK Soccer Club Practice, 6-8pm, Alumni Gym, 2nd Flr, 211 Student Ctr.</p> <p><b>LECTURES</b> "The Green Revolution: A History of the Green Revolution," 7pm, The Green Revolution: A History of the Green Revolution, 7pm, The Green Revolution: A History of the Green Revolution</p> <p><b>ARTS/MOVIES</b> UK Musical Theatre, 8pm, Gospel Theatre, call 257-4929 for tickets UK Musical Theatre, 8pm, Gospel Theatre, call 257-4929 for tickets</p> <p><b>INTRAMURALS/RECREATION</b> Tennis Doubles &amp; Mixed Doubles Round Robin, 4pm, 145 South St.</p>	<p style="text-align: center;"><b>Sun 22</b></p> <p><b>ACADEMIC</b> Workshop for Internships &amp; Shadowing, 3-5pm, 101 Student Bldg. Master Year Time Workshop, 10-10:30am, 201 Foye Hall</p> <p><b>MEETINGS</b> Phi Kappa Psi, 7:30pm, Baptist St. Union Chapel Phi Sigma Pi, 8:30pm, 228 St. Union Chapel Phi Beta Phi, 8:30pm, 228 St. Union Chapel Phi Chi, 8:30pm, 228 St. Union Chapel Phi Kappa Psi, 8:30pm, 228 St. Union Chapel Phi Chi, 8:30pm, 228 St. Union Chapel Phi Chi, 8:30pm, 228 St. Union Chapel Phi Chi, 8:30pm, 228 St. Union Chapel</p> <p><b>SPORTS</b> UK Rugby Practice, 6-8pm, Club Sports Field UK Soccer Club Practice, 6-8pm, Alumni Gym, 2nd Flr, 211 Student Ctr.</p> <p><b>SPECIAL EVENTS</b> Partners for Solidarity: An Israeli Perspective on the Current Cycle of Violence, Jewish Stud. Org., 8pm, 211 Student Ctr.</p> <p><b>ARTS/MOVIES</b> UK Musical Theatre, 8pm, Gospel Theatre, call 257-4929 for tickets UK Musical Theatre, 8pm, Gospel Theatre, call 257-4929 for tickets</p> <p><b>INTRAMURALS/RECREATION</b> Tennis Doubles &amp; Mixed Doubles Round Robin, 4pm, 145 South St.</p> <p><b>MEETINGS</b> Phi Kappa Psi, 7:30pm, Baptist St. Union Chapel Phi Sigma Pi, 8:30pm, 228 St. Union Chapel Phi Beta Phi, 8:30pm, 228 St. Union Chapel Phi Chi, 8:30pm, 228 St. Union Chapel Phi Chi, 8:30pm, 228 St. Union Chapel Phi Chi, 8:30pm, 228 St. Union Chapel Phi Chi, 8:30pm, 228 St. Union Chapel</p> <p><b>SPORTS</b> UK Rugby Practice, 6-8pm, Club Sports Field UK Soccer Club Practice, 6-8pm, Alumni Gym, 2nd Flr, 211 Student Ctr.</p> <p><b>LECTURES</b> "The Green Revolution: A History of the Green Revolution," 7pm, The Green Revolution: A History of the Green Revolution, 7pm, The Green Revolution: A History of the Green Revolution</p> <p><b>ARTS/MOVIES</b> UK Musical Theatre, 8pm, Gospel Theatre, call 257-4929 for tickets UK Musical Theatre, 8pm, Gospel Theatre, call 257-4929 for tickets</p> <p><b>INTRAMURALS/RECREATION</b> Tennis Doubles &amp; Mixed Doubles Round Robin, 4pm, 145 South St.</p>



Isn't that crafty?

## Dinner is served child support style

**HARRAH, Okla.** — Keith Griffith would have preferred the grilled chicken on a bed of noodles. Instead, the Healthy Choice entree delivered to his door held state documents seeking \$9,450 in back child support.

The Department of Human Services often uses TV dinner boxes and shoe boxes to send certified mail to people who owe child support. Deadbeat parents are more likely to sign if it's a package, especially an unusual one, agency spokesman Dustin Pysatt said.

The documents for Griffiths, 21, arrived by certified mail two weeks before his wedding. They claim he owes three years of child support for a girl he fathered back in high school. "It's just ridiculous," said Griffith's fiancée, Crystal St. Clair. "You'd think the state would be more professional than this. This stupid box stinks of chicken."

Griffith has 15 days to pay the back child support or submit to a paternity test. He plans to take the test.



PHOTO FURNISHED  
Finger-lickin' child support.

Yeah, sausage...

## Kielbasa king ends 63-year market reign

**NEW CASTLE, Pa.** — Long live the kielbasa king. Walt Wasilewski, 77, recently ended his 63-year reign, but he has a standing invitation from the new owners of Wasilewski's Markets to come back and regale customers with sausage-making stories.

Rodney Firmi, 37, and his wife Sherri, 36, took over the sausage shop Dec. 1 after it had been in the Wasilewski family for 88 years.

The out-of-towners miss Walt, admitted Sherri Firmi. "I'm good at the counter, but I just haven't got any war stories," Wasilewski's father, John, came to America in 1907 as a 16-year-old and stumbled into the kielbasa business.

Wasilewski started working when he was 14 and ran the business on his own for 44 years. "I gave them my recipes, my procedures, my smoker, all my equipment," Wasilewski said, referring to the Firmis. "They'll have the video that I had made showing step-by-step of the kielbasa-making process as soon as I get it copied."

Source: AP Wire  
Compiled by  
Amanda Thompson

Send your letters to the editor to the Kernel!



## IN OUR OPINION

# Like an eagle into the future

*Future's so bright, they gotta wear shades. Congratulations to the next Kernel cool kids*

Applause, applause, applause. Let's hear it for the next high and mighties of the Kernel. After careful consideration the decisions as to who would fill that position were finally announced yesterday.

The editorial board would like to extend a hand of congratulations to Ashley York on her position as editor in chief of the 2001-2002 Kernel.

We would also like to wish Scott Sloan good luck and best wishes on his run at the Kernel helm this summer.

But our hip, hip, hoorays are not completely limited to the newsroom. That's right, Erica Chalk — our future student ad manager — stand up and take a bow.

With the ending of one generation of staffers at the Kernel we would also like to welcome any and all future staff.

As for the dialogue page, we are currently accepting applications for editorial board members for summer and fall.

If you are opinionated and consider yourself a decent writer, stop by and shake a hand or two with the current dialogue staff.

In hopes of opening the page up to more dialogue, we are opening up arms to new faces. There are only 10 positions available but it never hurts to try to get involved.

With only two weeks left in this semester, time is quickly running out for summer positions.

Thus for those living here in little ol' Lexington, get your groove on and join the summer Kernel fun.

For those shining faces we will be unable to see again until August, we look forward to new writers just as much as old.

Needless to say if you thought you didn't want to write, take time this summer and give yourself a chance to stretch those writing legs.

After all, there will be no tests or papers to keep you bogged down under the multi-faceted weights of stress.

So get up and get out to the Grehan Building basement.

Oh, and remember to smile and clap if you see one of our future Kernel editors or managers when you walk in.

## Josh Fried

GUEST COLUMNIST

# Ranking our schools or misleading the masses?

Once again, spring is in the air. The days are a little longer, the weather a great deal warmer and the trees a few shades greener. Once again, late last week, approximately 2,400 high school seniors received the acceptance letter that will change their lives.

This year, the letter was from America's sixth best university. No, not the University of Pennsylvania. The other one ranked sixth — Stanford.

U.S. News and World Report, once again, tinkered with its rankings of "America's Best Colleges," placing Stanford and UPenn in a tie for sixth place. Princeton leads the pack, while Harvard and Yale are tied for second, California Institute of Technology sits at fourth and MIT is fifth.

Published every year around the first week of September, U.S. News's bestselling college rankings issue arrives as high school seniors are taking SATs and filling out applications. While the magazine vacates bookstore shelves in a week, the hefty

"2001 College Guide" remains on sale, according to its cover, until June 1. It was this guide that caught my attention the other day, situated prominently by the magazine rack in our very own bookstore.

At first glance, the guide sports a cover extremely similar to the magazine issue released in September. But this new edition boasts "All-New Rankings of 1,400 Schools." Really? Nope, I couldn't find any rankings that were new for 2001. Stanford was sixth in September 2000, and it is sixth today. This may be going out on a limb, but I'm pretty sure we'll still be ranked sixth come June 1 until the September issue arrives, of course.

Upon closer inspection, the 300-page guide appears to be no more than a padded version of the magazine. The first 100 pages contain the rankings and various recycled articles about "Choosing a College," "Getting In" and "Paying Your Way." The bulk of the guide contains a 200-page direct-

ory of colleges across America. It lists basic information about each school, such as application deadlines or a breakdown of the undergraduate student body, that can be easily found on the web.

Helping students get into college has become a huge industry. The growing frenzy surrounding the college admissions process, combined with America's obsession with winners, losers, rankings and "Top 10" lists, creates strong demand for a rankings guide that helps order the chaos.

Thus, it comes as no surprise that U.S. News releases the "college guide" to increase profits on the coattails of its magazine's popularity.

But, as former University President Gerhard Casper argued quite eloquently in a 1996 letter to the editor of U.S. News, these rankings do a disservice to the public.

The college guide, in particular, is more misleading than helpful and ought to be discontinued. Obviously, it is impossible to

## Andrew Stephenson

GUEST COLUMNIST

# Options for education

The focus of most parents' lives, almost from the moment of their child's inception, is how and where they are going to send their child to college. Secondary schools today are geared toward getting students into college.

The schools are judged on the premise that higher standardized-test scores mean better schools and therefore they have more graduates who are successful in college.

A few problems exist with this happy picture since college degrees do not hold the power they once did and colleges themselves do not provide the same kind of education they once did.

First, not every high school graduate can get into college. Some students do not qualify and others cannot afford the expense. Still others qualify, but because they are not at the very top of their classes and they do not have minimum test scores, they do not get accepted.

Students who get into college are forced to take classes that waste their time and money. Many colleges force students to load up on core classes and other requirements that serve no purpose other than to pad the institution's wallet and to keep certain departments afloat. Also, many classes are not taught by teachers, but by graduate students or professors who are concerned mainly with research, and not with education.

Students in many majors are also forced to go through many of the so-called "weed-out" courses. These classes appear to be part of a major, but are in truth set up so that a certain number of students will fail, keeping the upper-level courses in that major from becoming overcrowded.

Another problem facing today's college student is expense. Most Americans cannot afford to pay for college outright, and the costs continue to rise. They turn to student loans in many cases, but recent surveys show that even students do not fully understand their financial situation, especially when it comes to loans. A nationwide poll taken by the U.S. Public Interest Research Group found that 78 percent of students underestimated the total cost of their loans, by an average of almost \$5,000. Eighteen percent could not even give an estimate of how much they would owe after graduation.

The survey found that students also generally overestimated their income after graduation, giving them false expectations of how quickly they would be able to pay back debts. The average income for recent college graduates is only about

\$27,000, but students surveyed by PIRG expected to make just over \$30,000.

By way of comparison, a truck driver in the trucking and warehousing industry made a median salary of about \$29,000 in 1998, without the benefit of a college education, according to the U.S. Department of Labor web site.

Federal grants, once a viable method of funding college, made up about 55 percent of aid to students in 1991, and loans made up 40 percent. Today the ratio stands at 60 percent in loans and just 40 percent in grants.

One of the largest problems with college is that the parents of today's students grew up in an era when a college degree basically guaranteed a job, and those who went to college had the best chance for a future.

But today's job market is not what it once was. There is a glut of college-educated individuals out in the world, all fighting for the same few jobs.

Instead of the dream job they envisioned, graduates end up in low-paying menial management jobs for fast-food chains or other such glamorous careers. No one wants to pay \$10,000 a year in loans for a college degree that does not pay in return.

The world needs truck drivers and contractors, just as much as it needs doctors and lawyers, but this fact is often overlooked throughout a child's education. With so many Americans going into debt for an education they will never really use, the focus should not be so much on college.

Instead of getting an education that essentially teaches students how to work for other people and make the employer money, high school graduates could get a real-world education and work for themselves. Self-employment is the way many of the richest people have made their money, and there are many tax benefits to it.

Another option for potential college students is that many corporations, such as AmeriCorps, will finance college educations for their employees, as employee education increases their profit margins by more than the relatively smaller raise that the employee gets.

There are many good substitutes to the classic college education that is forced upon students today, and efforts should be made to push these alternatives just as hard.

Guest Columnist Andrew Stephenson writes for The Battalion (Texas A&M U.). His views do not necessarily represent those of the Kernel.

## CONTACT US

### E-mail

Send us your letters and comments by e-mail. Hey, we love the Net and we know you do too. So send your thoughts to [dialogue@kykernel.com](mailto:dialogue@kykernel.com)

### Snail mail

Send your letters via the postal service for only \$3.34 — it's that cheap. Send your thoughts to 035 Grehan Building Lexington, KY 40506-0042

### Length & style

Letters to the editor are to address previously printed editorials and columns. They should be approximately 250 words long.

Guest opinions should start new dialogue and not address other editorials or columns. Guest opinions should be no longer than 600 words.

### Include this info

Include your name and major classification (for publication).

Please include a phone number and e-mail address for verbal confirmation.



FOR SALE

'86 HONDA PRELUDE High miles. Well-maintained. 5-speed stick with sunroof. \$2000 or OBO. 257-4872 ext. 4000.

FOR RENT

1 BR OUTSTANDING VALUE One fully furnished apartment with utilities, central heat, and air conditioning. Off street parking, 8 min drive from campus. Call 277-3002.

CLASSIFIEDS Call 257-2871 to place ads!

Visa, Mastercard and American Express accepted! DEADLINE: 12 p.m. the day before publication http://www.kykernel.com

1 BR WALK TO CAMPUS. Available for August. Parking. Pets allowed. 268-9237. MONTH FREE RENT SPECIAL! 2, 3 & 3 BR town homes. Legacy Farms Town Homes. 200 Alkaba Ct. Lexington, KY 40507. Call 268-8333. Ask us about our UK discount.

UNIVERSITY COMMONS 2 AND 4 BR fully furnished apartments. Bus route to campus. W/D in every apartment. Swimming pool, hot tub, exercise room, basketball, volleyball, and tennis courts. Individual leases. 258-2039.

HELP WANTED

OUR BUSINESS NEEDS HELP! I earn what you are worth! 1-888-557-5736. www.frommyindign.com. \$500 WEEKLY POSITION mailing our circulars. For info call 203-977-1720.

CONFIDENTIAL PREGNANCY ASSISTANCE Birthright 2134 Nicholasville Rd. 277-2635. FREE PREGNANCY TESTING ABORTION SERVICES 278-0214

crossword puzzles

ACROSS, DOWN crossword puzzle grids with numbered squares and word lists. Includes 'PREVIOUS PUZZLE SOLVED' and 'PREVIOUS PUZZLE SOLVED' sections.

BIRTH CONTROL SERVICES Lexington Planned Parenthood Center, Inc. (859) 252-8494 908 West Second St. Lexington, KY 40508

Holmes PORKFEST April 21, 2001 Noon - 4:00 p.m. North Campus Courtyard Live Blues from: Jimmy Roberts Blues Band

Dunking booths, Bungee Run, and Prizes \$2 Pork meals, Meet UK Basketball players This event is Sponsored By: Holmes Hall's RSG, Other Residence Halls' RSGs, and Stone's Market All proceeds go to The American Cancer Society

**BASKETBALL**

## Western VanHouse to help Cats open new hoops season

STAFF REPORT

Hoops season will begin anew at Rupp Arena on Nov. 15 as the Cats host the National Association of Basketball Coaches Classic.

Marshall will face George Washington in the first game of the four-team, two-day tournament at 6 p.m., with the Cats taking on Western Kentucky in the nighttime.

The consolation and championship games will take place at 6 p.m. the following evening. UK coach Tubby Smith is enthused about the tourney's docket.

"This is quite an opportunity to open the season against the resurgent Hilltoppers," Smith said. "The NABC has put together a great field. Western will present a tough challenge, and I know both George Washington and Marshall are looking forward to returning solid teams."

The Cats have compiled a 3-1 record against Western, the only loss coming in the 1971 NCAA Tournament. The two teams haven't played since a 93-83 UK win at Rupp on Feb. 15, 1992.

The Hilltoppers finished last season with a 24-7, a Sun Belt Conference regular season title, the SBC Tournament crown and a berth in the NCAA Tournament.

WKU coach Dennis Felton is glad of the opportunity to

play the Cats and harbors hope for more meetings in the future.

"We are honored to be invited to participate in one of the most prestigious college basketball events of the year," Felton said. "An added benefit is our opening round matchup with Kentucky."

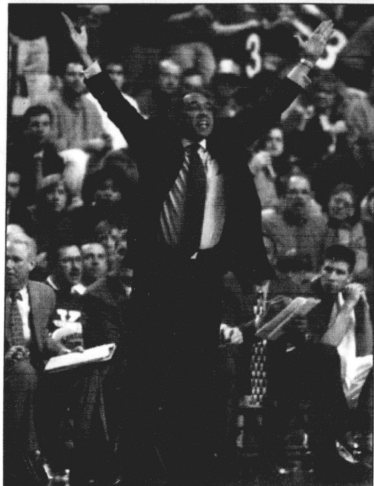
"Since I arrived at Western, I've developed a strong feeling that the three traditional powers in the state should play every year. Louisville has returned to our schedule and this is a good first step in getting a relationship going with Kentucky."

Marshall boasts a former Kentucky Mr. Basketball from Paintsville, J.R. VanHouse, who teamed with UK's Todd Tackett to lead Paintsville High to the Sweet 16 title as sophomores in 1996.

VanHouse averaged 16.5 points, and 11.5 rebounds per game last season and was selected to the Mid American All-Conference team.

G.W., coached by Tom Penders, finished the 2001 season with a 14-18 record, 8-8 in the Atlantic 10.

Tickets to the event will be included in the Cats' season ticket package. An allotment of seats will be split among the other three teams, with no public sales of seats planned at UK. The Cats are expected to announce their complete 2001-02 schedule in July.



JAMES CRISP | KERNEL STAFF

**Bliss**  
Coach Tubby Smith probably misses the calm and quiet of the Rupp Arena sidelines. Don't worry - the Cats return to action in Rupp this November.

**CLASSIFIEDS**

Continued from page 5

hostess, cashier, and dishwasher. Grill cook experience preferred for back cook cooks and prep cooks. Will have a 401k. Call 223-7684 or come to Cracker Barrel off New Town Pike. Accepting applications anytime.

**DESTINY CONSTRUCTION COMPANY** is offering full and part-time telemarketing positions. Flexible hours, mornings/evenings. Hourly pay plus lucrative bonus schedule. Hiring immediately. Call Susan @ 260-1663.

**EARN \$5 PROMOTING ARTISTS** like Nine Inch Nails, Eminem, BT, & Limp Bizkit within the Lexington area. No experience necessary. Hourly pay. www.nojsrep.com for info or call 800-999-1056.

**FIRST INVESTORS** 70-year-old Wall Street firm now accepting intern resumes. Call Nick (859) 273-2717

**FRIENDSHIPS • SORORITIES • CLUBS • STUDENT GROUPS** Large \$1000-\$2000 this semester with the easy CampusFundraiser.com three hour fundraising event. No sales required. Fundraising dates are filling quickly, so hurry today! Contact CampusFundraiser.com at (888) 923-5238, or visit www.campusfund.com

**FREEDOM WORK** from home, mail order/Internet. \$25-75/hr. P1 or FT. Free booklet 1-800-370-9121.

**GOLD'S GYM** Work 3 hours/week in childcare for free membership. Call Sherry 249-4294

**Graphic design students** fall/spring 2001-2002. UK/LCC students, get experience in graphic design. Flexible schedule. Experience preferred but not necessary. Send your portfolio to Chris.productions@ky.edu

**GREAT COLLEGE JOB** Two resident position family needing part time live-in babysitter for two small children. Housing provided. Call Kristi or Shaun (800)748-7005 or medsh@hntsc.edu

**GREAT COLLEGE JOB** Two resident position family needing part time live-in babysitter for two small children. Housing provided. Call Kristi or Shaun (800)748-7005 or medsh@hntsc.edu

**HARD PHYSICAL WORK MOVING FURNITURE**. P/T this semester and/or F/T summer. Must have drivers license. 225-8000

**HORIZON CAMPS**-SUMMER JOB/INTER-SHIP 5 great kids summer camps in NY, ME, PA, and WV seeks staff to live with boys age 6-16. Positions include: tennis, swimming, climbing, backpacking, canoeing, mountain biking, boating, water-skiing, ropes course, piano, arts and crafts, media, gymnastics, archery, golf, volleyball, roller hockey, lacrosse, soccer, baseball, and basketball. Cabin Specialist and Group Leaders also needed. Wide range of paid internships. Job to Aug. 16. Benefits include: training, safety, accommodation, food, laundry, and travel allowance. Apply online at www.horizoncamps.com or call (800) 544-5448.

**KITTY O'SHEAS** needs beer drinkers. Apply within.

**MALONE'S NOW HIRING** host staff. We are looking for part time or full-time guest focused individuals to work in the busiest restaurant in Lexington. Best pay in town. Come work for the best \$\$ Apply in person between 2pm-5pm 3347 Tates Creek Rd. 335-6500

**NEED PT ACCOUNTING CLERK**, must be accounting major. Call Norman or Sue at 272-0000.

**NEED PT HELP** for grounds and home maintenance. 269-0908

**O'CHARLEY'S HARBORSIDE RD.** Immediate openings for servers. FT or PT. Flexible scheduling, two lunch minimum. Apply in person 2099 Harborside Rd.

apply in person at 342 Romney Road.

**SALESPERSON NEEDED** for local security company. P1/FT. High commissions. Will train. Appointment only 381-0209.

**SITTER IN MY HOME** for a 4 month old. Non-smoker, transportation, references needed. P1 M/F. 885-7779.

**SUMMER BABYSITTER 3-4 DAYS** a week for 2 children in Lexington. Call Pam 262-9677.

**SUMMER BABYSITTER NEEDED** Full-time. Must have car. Please call 266-9690

**SUMMER CAMP JOBS** Help girls grow strong, learn to kayak in your free time. Girls Scouts of Kentucky job openings: Unit Counselors, Waterfront Director (WSI preferred), Lifeguards, Boating Director, Boating Assistant, Arts & Crafts Director. Great benefit! Apply online at www.girlscoutsofky.org or call Lou Corum at 1-888-775-5170

**SUMMER CAMP!** Seeks STAFF with deep commitment to CHRIST. Rock climbing, riding, mountain biking, swimming, whitewater canoeing, arts, backpacking, high ropes course, tennis, cooks...more. KAHDALEA-girls, CHOSATON-GA-boys, 2500 Morgan Mill Road, Broadway, North Carolina, 28712.

**SUMMER JOB OPPORTUNITY.** Brandstetter Carl, 1520 Kentucky, \$10/hr. Contact Patty Steinhilber (859) 268-1933.

**SUMMER OPPORTUNITIES**-Do you have what it takes to work in a fast paced high tech environment for the summer? Faithful+Lewises.com is currently seeking motivated individuals for a fun and exciting office with a great team moral. Tremendous resume booster. Great base, plus fantastic incentives. Make the summer cash you deserve. Call 422-0427 or e-mail [claf@faithful.com](mailto:claf@faithful.com)

**THERAPEUTIC CHILD SUPPORT NEEDED** to work with emotionally and behaviorally disturbed children. Six months' experience required. Please send resume to Brinary Center at 177 Walton Ave, Lexington 40508.

**THIN, VERY ATTRACTIVE FEMALES** who smoke at least occasionally needed for confidential national telephone interview. Earn \$50. Toll free 866-793-2275, leave name and number, your call will be returned ASAP. Visual Solutions, Inc.

**TOP BOYS SPORTS CAMP IN MAINE!** Play & Coach Sports, have fun, make \$\$, Camp Cob-bosses. Positions available in: all team & individual sports, all water sports, plus: camping & fishing, ropes & rock climbing, ice hockey, roller hockey, arts & crafts, martial arts, board, laundry. Travel Allowance. [www.campcob-boss.com](http://www.campcob-boss.com) online application or call: (800) 473-6104.

**VALET NEEDED 37 00hr** + tips. All shifts available. Free workplace. Call Mr. Pice at 259-7567

**WANTED FOR SUMMER:** Someone to baby-sit in my home 2 girls, 8 & 5. Start June 4 mid August. Must have reliable car. Call 245-8773.

**WANTED:** Telemarketers, \$10/hr., evenings. Please send person at 2401 Regency Rd, Suite 202 Lexington.

**WE PAY YOU TO LOSE** up to 30 pounds in the next 30 days. (866-904-SLIM).

**WORK FROM HOME \$25-375/HR.** P1/FT. Inter-Net. Mail order. 800-459-8086.

**WORK FROM HOME** Internet/Mail order \$1000-\$5750/mo; P1/FT (800) 261-1274. [www.bbbjnow.com](http://www.bbbjnow.com)

**YMCA CAMP COUNSELORS NEEDED.** No nights or weekends, in Louisville. 502-491-9622 ext.38. [jilchoff@ymcainc.org](mailto:jilchoff@ymcainc.org)

**PERSONALS**

**SENIORS COME GET FREE STUFF** Today! outside the classroom building from noon-1:45. DM 0154 out

**FREE call with color.** Wednesday highlights only \$45. Waxing, tanning, and massages. Phone cards for 126 minutes for \$20. Happy Hour Haircuts \$14 from 6-8 p.m. with Call by Appl. 505 Euclid Ave next to SuperAmerica. 252-SNP.

**WEIGHT LOSS\*\*** healthy and naturally! We will work with you personally to keep the weight off. 1-888-420-1601

**MET SEXY SINGLES\*** Post/Listen to ads FREE! (859) 383-1545-2647-07\_38

**CHINESE MARTIAL ARTS** Buell Anthony, 6:30-8:30 p.m. Fridays and Mondays, 271-2088.

**EGG DONORS NEEDED.** Up to \$10,000 compensation. Kind, healthy, women. Age 19-33. Call toll free 866-846-9344.

**FOCUS GROUP!** FREE FOOD! Any UK or LCC student who has used University Health Services at least once is invited to tell us what you think about the Health Service! Thursday April 19, 2001 5pm, Young Library Garage, 1hr. long. To participate call 323-5623 ext. 281 or e-mail [mbrn00@pop.uky.edu](mailto:mbrn00@pop.uky.edu) if you participated in the Focus Group last January, please do not participate again.

**FREE FACIALS AND MAKEOVERS.** Well known, guaranteed quality product used. Call Independent Beauty Consultant at 273-2281

**HOT DATES AWAIT!** Record/Listen to ads FREE. Call 381-1745 code 4949.

**LOOKS 40 POUNDS** in just two months. Lose 5-100 pounds free samples 800-567-2344.

**LONG AVAILABLE, BANKRUPTCY WELCOME.** no application fee. Low interest rates, high approval rate. Call toll free 1-877-494-8841

**LOVE YOUR BODY... SPRING INTO HEALTH!** Free health information, chat message, friends and much more. Web. April/01, UK Student Center. Radio Addition. 10 am-2 pm. Sponsored by UK SNAAC and UK CARES. Call 323-5823 ext. 281 for more information.

**MISS LEXINGTON PAGEANT** will be held September 14<sup>th</sup>, 2001. We are now taking applications. \$10,000 in cash scholarships and \$5000.00 in-kind. Scholarships, opera house-Lexington, Ky. Applications can be picked up at 515 Patterson Office Tower or by calling 278-4450 or 224-4897...email [KHCARET@RAJ.COM](mailto:KHCARET@RAJ.COM) or [JHUTCH2@AOL.COM](mailto:JHUTCH2@AOL.COM)

**MOM'S DREAM:** Stay home, lose weight, make money. [www.bebodybeautiful.com](http://www.bebodybeautiful.com)

**NEED MONEY CHEAPER** auto insurance would give you money. Call me, Steven Meadows, 248-8462, you never know

**VOLUNTEERS PAID** to participate in studies concerning the effects of alcohol and drugs on behavioral and mental performance. Looking for male and female social drinkers 21-30 years of age. Call 257-5794. EOE, M/F/D/V.

**WE BUY AND SELL CDs** (Rock, Pop, Country, etc.). DVDs and Videos. Southern Star, 2891 Richmond Rd. B111. [www.cdsbuy.com](http://www.cdsbuy.com)

**ROOMMATE WANTED**

**FEMALE TO SHARE 3 BR** condo at Campus View W/0 included, close to campus. \$325 plus deposit. Available 6/01. Call 225-3334 ext. 103 or 381-9164.

**1 BR IN VERY NICE 3 BR** townhouse. May and July for Megan. 271-9632

**2 ROOMMATES NEEDED ASAP!** For a 3 BR, 1 1/2 BA House. Fenced yard, W/D. Close to campus. \$245/mo. plus utilities. Call Eric 255-8535.

**ROOMMATE WANTED** to share nice, quiet apartment off campus. Call Jennifer at 323-7083 or email [erice.jen@hntsc.com](mailto:erice.jen@hntsc.com)

**ROOMMATE WANTED** to share nice, quiet apartment. 2 BR, 2 BA. Call Alicia at 273-3992 or email [www.arbow1@pop.uky.edu](mailto:www.arbow1@pop.uky.edu)

**ROOMMATE WANTED:** To share with one other person, large house with Med. student, 3BR, private bath, fenced yard, garage, partially furnished, professional or professional school student, walking distance to Medical School, back of football stadium, on Cal De Sac. \$600/mo, plus split utilities. On Berry Lane. Send resume and status to: [jaredn@iun.com](mailto:jaredn@iun.com). Occupancy by July 1.

**SEEKING FEMALE STUDENT** to help lease a 3BR townhouse near campus. Call Jennifer at 323-7083 or email [erice.jen@hntsc.com](mailto:erice.jen@hntsc.com)

**SUBLEASE 1 OR 2 ROOMS** for June and July. Just minutes from campus on Aylesford. Spacious rooms with air conditioning. \$250/mo. Call Kathy 255-1777

**SUMMER SUBLEASE,** female roommate wanted. 2BR in 4BR/2BA apt. W/D. 0/W. May-July great campus location. Call 425-4006.

**TWO STUDENTS WANTED** to share very nice house with two guys. \$310 each per month plus 1/4 utilities. 258-8232.

**WALK TO UK 3BR** house to share with non-smokers. No pets. \$300/mo. + utilities. 299-8762.

**SERVICES**

**BAD CREDIT PROBLEMS OBTAINING A LOAN?** No application fee. High approval rate. Low interest rates. Bankruptcy accepted. Call Toll Free 1-888-654-4365.

**ENGLISH AS A SECOND LANGUAGE.** Tutor accepting new students. Call 235-3490

**FREE SUMMER STORAGE!** Pay 3 months, get 4<sup>th</sup> month free! We accept major credit cards. Call SECURE SELF-STORAGE. 252-1896.

**HONKAS ONLY:** repair and service since 1980. Alpine Imports 269-4411 Next to MOVIES 10.

**PUBLISH YOUR WORK** for \$1295. Textbooks, novels, and more. Call FirstPublish, Inc. at 888-707-7634. Or visit [www.firstpublish.com](http://www.firstpublish.com).

**LOST & FOUND**

**FOUND:** Set of car keys by King Library. Neon yellow state farm key chain. [ethu02@hotmail.com](mailto:ethu02@hotmail.com)

**FOUND:** Set of keys by Old Student Center. Taken to Euclid Ave. Krogers.

**FOUND:** Set of keys in large parking lot behind Kiwan/Blanding complex. Found Wednesday, March 7. Call K 3 front desk. 323-7875.

**RIDES**

**DOES YOUR CAR SOUND** less like a BMW and more like a Pinto every day? Need a ride? Call Kernel Classifieds at 257-2771! We can help!

**NEED A RIDE?** Kernel Classifieds can help! Call 257-2771 and place an ad today! You'll get results!

**Summer Employment**  
**TUTORS NEEDED AT CATS**  
Call Leah at 257-8798

- ENG 203
- MATH 109, 123
- ECON 201, 202
- COM 181
- SPANISH

**Are you looking for PART-TIME EMPLOYMENT?**

- \$8.50 - \$9.50 per hour
- 20-25 hours per week
- Convenient work schedules
- Paid vacation, holidays, plus medical benefits
- Part-time management opportunities (*with \$4,000 a year tuition reimbursement*)

Call 1-888-WORKUPS  
**FOR MORE INFORMATION or visit**  
[www.upsjobs.com](http://www.upsjobs.com)

Your college placement department OR  
Department for Employment Services  
300 S. Upper St., Lexington, KY

Shifts:  
4:00 a.m. - 9:00 a.m.  
11:00 a.m. - 4:00 p.m.  
5:00 p.m. - 10:00 p.m.  
11:00 p.m. - 4:00 a.m.

Equal Opportunity Employer

**STUDENT TRAVEL**

**EUROPE ON SALE!!!**

London.....	\$537
Rome.....	\$488
Paris.....	\$428
Frankfurt.....	\$372
Rio de Janeiro.....	\$802
Prague.....	\$468
San Jose.....	\$571

**STA TRAVEL**  
800.777.0112  
[www.statravel.com](http://www.statravel.com)

**April VALUE MEALS**

GEE, CAPTAIN CUISINE, THESE VALUE MEALS ARE A STEAL AT FOUR BUCKS AND UNDER!

**THEY SATISFY A SUPERHERO'S BELLETT AND APPETITE!**

**TRAVEL**

**WINTER BREAK/SPRING BREAK.** Ski and beach trips on sale now! [www.sunchase.com](http://www.sunchase.com) or 1-800-SUNCHASE today!

**Cap'n Cuisine**  
Paid for by the Dept. of UK Food Services

**UK Campus Cuisine**  
SUNSHINE SUPER  
[www.uky.edu/AuxServ](http://www.uky.edu/AuxServ)