

copy 1

OFFICIAL **25** PROGRAM

# KENTUCKY \* CINCINNATI

STOLL FIELD

SEPTEMBER 29, 1945

University Archives  
Margaret I. King Library - North  
University of Kentucky  
Lexington, Kentucky 40506



# THE KENTUCKIAN

LEXINGTON'S NEWEST HOTEL

**You'll Find Your Visit To Our  
Hotel As Pleasing As A  
'Wildcat Victory'**

FRIENDLY, PERSONALIZED SERVICE  
RADIO, BATH AND ICE WATER IN EVERY ROOM

VISIT OUR NEW  
AIR CONDITIONED GRILL ROOM

T. H. HARDWICK & PAUL McBRAYER  
Managers

SUKY CIRCLE SERVING YOU



Dixie Ice Cream Co., Inc.

Lexington, Ky.

**FOOTBALL**

**Kentucky**

*vs.*

**Cincinnati**

STOLL FIELD

Lexington, Kentucky

Saturday, September 29, 1945

8 P. M.

Published by the Athletics Department of the University of  
Kentucky, Lexington, Kentucky

*The Front Cover was Designed and Printed by DON SPENCER COMPANY, INC., 271 Madison Ave., New York.*

**WILDCATS!**

**WE'RE WITH YOU ALL THE WAY**

Pride in the team increases our pride in the  
University and we believe in both.

**First National Bank & Trust Company**

LEXINGTON, KENTUCKY

Lexington's Oldest and Largest Bank

15 PER CENT DISCOUNT ON ALL CASH AND CARRY

Make Use of Our Convenient Drive-in Facilities

*De Baar*

Laundry - - - Dry Cleaning

PHONE 2000

265 EUCLID AVE.

*The Phoenix Hotel*

Lexington, Kentucky

Where old and  
new friends meet  
during the Foot  
Ball Season

AIR CONDITIONED

Dining Room                      Cocktail Lounge

NOW UNDER NEW MANAGEMENT

MARTIN A. NICHOLS,

Formerly of the Statler Hotel, Washington, D. C.

**CAMPUS BOOK STORE**

NEW AND USED TEXTBOOKS  
RECENT FICTION AND BIOGRAPHY  
REPRINTS INCLUDING MODERN  
LIBRARY  
DIETZGEN AND KEUFFEL AND  
ESSER ENGINEERING SUPPLIES  
SPALDING AND CHAMPION  
ATHLETIC EQUIPMENT  
MONTAG STATIONERY  
SHEAFFER FOUNTAIN PENS  
COMPLETE ART REQUIREMENTS



HON. SIMEON S. WILLIS

Governor of Kentucky

**SCORES PREVIOUS GAMES CINCINNATI—KENTUCKY**

|          |      |          |    |            |    |                  |
|----------|------|----------|----|------------|----|------------------|
| Sept. 29 | 1900 | Kentucky | 6  | Cincinnati | 20 | Cincinnati, Oh.  |
| Oct. 12  | 1901 | Kentucky | 0  | Cincinnati | 0  | Lexington, Ky.   |
| Nov. 15  | 1902 | Kentucky | 6  | Cincinnati | 6  | Lexington, Ky.   |
| Oct. 21  | 1904 | Kentucky | 0  | Cincinnati | 11 | Cincinnati, Ohio |
| Oct. 28  | 1911 | Kentucky | 0  | Cincinnati | 6  | Lexington, Ky.   |
| Oct. 19  | 1912 | Kentucky | 19 | Cincinnati | 13 | Cincinnati, Ohio |
| Oct. 25  | 1913 | Kentucky | 27 | Cincinnati | 7  | Lexington, Ky.   |
| Oct. 31  | 1914 | Kentucky | 7  | Cincinnati | 14 | Cincinnati, Ohio |
| Oct. 30  | 1915 | Kentucky | 27 | Cincinnati | 6  | Lexington, Ky.   |
| Oct. 28  | 1916 | Kentucky | 32 | Cincinnati | 0  | Cincinnati, Ohio |
| Nov. 8   | 1919 | Kentucky | 0  | Cincinnati | 6  | Cincinnati, Ohio |
| Nov. 6   | 1920 | Kentucky | 7  | Cincinnati | 6  | Lexington, Ky.   |
| Oct. 7   | 1922 | Kentucky | 15 | Cincinnati | 0  | Lexington, Ky.   |
| Oct. 6   | 1923 | Kentucky | 14 | Cincinnati | 0  | Cincinnati, Ohio |
| Oct. 14  | 1933 | Kentucky | 3  | Cincinnati | 0  | Cincinnati, Ohio |
| Oct. 6   | 1934 | Kentucky | 27 | Cincinnati | 0  | Cincinnati, Ohio |
| Sept. 29 | 1945 | Kentucky | —  | Cincinnati | —  | Lexington, Ky.   |
| Oct. 27  | 1945 | Kentucky | —  | Cincinnati | —  | Cincinnati, Ohio |

(Kentucky: Won, 9; Cincinnati: Won 5, Two tie games)

MEET AFTER THE GAME  
AT  
**Rose Street Confectionery**  
351 ROSE STREET

**Skuller's**  
Lexington's Leading Jeweler and Silversmith  
115 W. Main St. Lexington, Ky.

**Wenneker's Sample Shoe Store**  
Famous Brands Sold Elsewhere \$7.50 to \$16.50  
Sold Here At \$2.95-\$3.95-\$4.95 Others to \$7.95  
153 E. Main St. Next to Strand Theatre

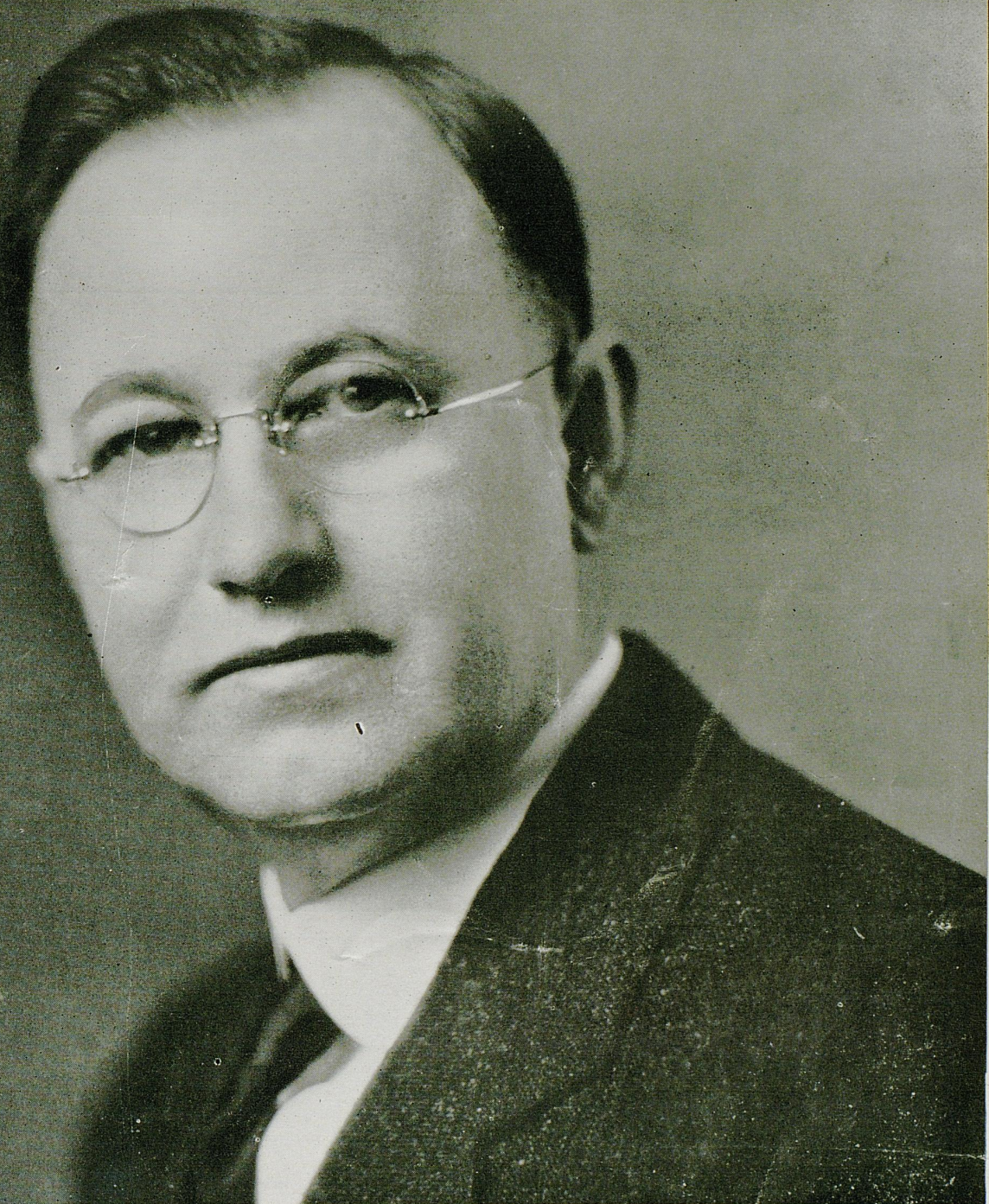
Compliments of  
**COOK'S FILLING STATION**  
Corner South Lime and Euclid

**Transylvania Printing Co.**  
(Incorporated)  
Printers — Stationers — Office Outfitters  
Parker — Sheaffer — Eversharp Fountain Pens  
Christmas Card Headquarters  
108 N. Upper St. Phones 34-35-36  
Established 1872

Official Photographers for 1945 Kentuckian  
All Kentuckian negatives on file at our studios.  
**Lafayette Studio**  
141-143 N. Lime Phone 6271

Compliments of  
**Fred Bryant Motor Co.**

Compliments of  
**LEET BROTHERS FURNITURE STORE**  
Main and Broadway



**PRESIDENT H. L. DONOVAN**  
University of Kentucky



GO YOU  
**WILDCATS**



Hit 'Em Hard!

Hit 'Em Low!

**THE LAFAYETTE HOTEL**

extends a cordial welcome and an invitation to the football fans to meet with us after the games—renew old friendships, greet new friends and enjoy the spirit of good fellowship that abounds.

Compliments of

**J. P. WRIGHT and B. C. JONES**

COURTESY

**BANK OF COMMERCE**

Be Better Fitted in

EXCLUSIVELY  
*Gaynham's*  
"SHOES OF DISTINCTION"

**KEITH'S, Inc.**

129 EAST MAIN STREET

**STEAKS - CHOPS - SEA FOODS**

**OUR SPECIALTY**





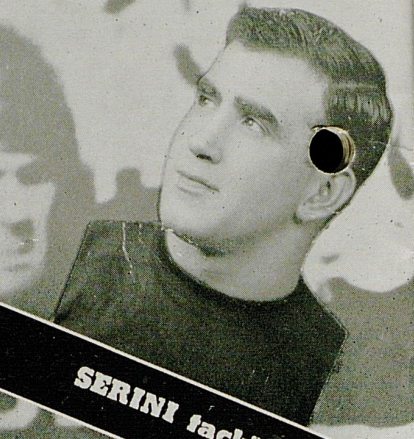
**BERNIE A. SHIVELY**  
**DIRECTOR OF ATHLETICS**  
University of Kentucky



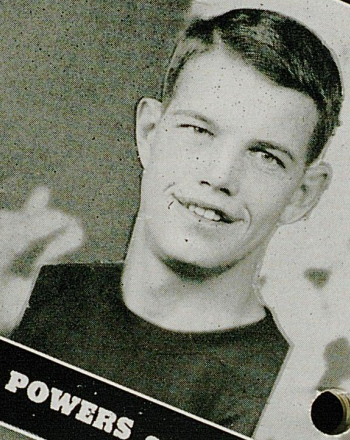
**FIERING** end



**SHANNON** fackle



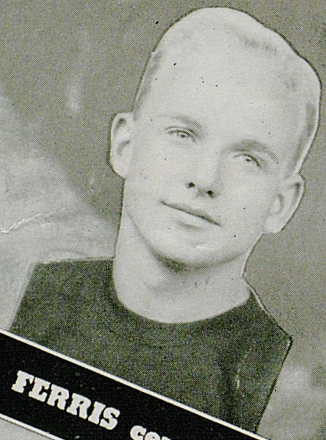
**SERINI** fackle



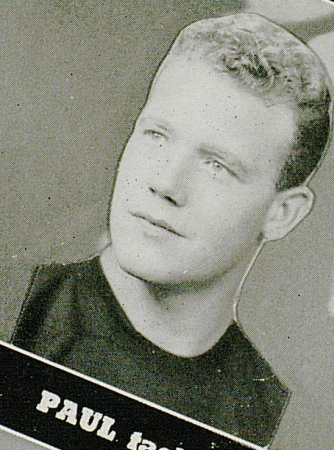
**POWERS** center



**McDONALD** center



**FERRIS** center

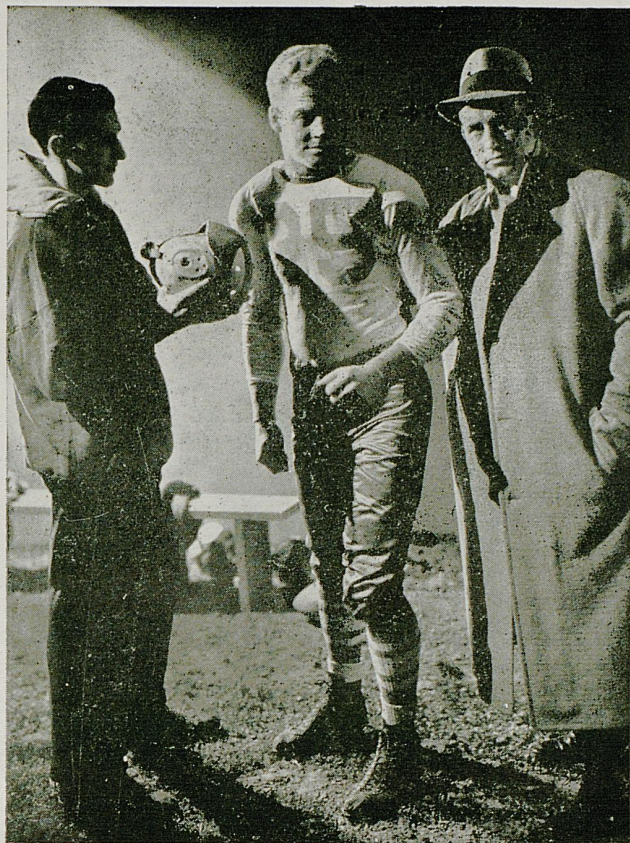


**PAUL** fackle



**ENGLISIS** fackle

# KENTUCKY



IN TODAY'S GAME  
**THE WILDCATS**  
 ARE WEARING

**Mac GREGOR-GOLDSMITH**

(Incorporated)

*Preferred*  
TRADE MARK

**FOOTBALL EQUIPMENT**

Coaches, players and trainers of leading colleges and universities use and endorse Goldsmith athletic equipment. They know Goldsmith products represent the utmost in value and service.

Today, in the Armed Forces, in the Army, in the Navy, and in the Air Force, Goldsmith athletic equipment is doing its bit to make our men physically fit for the big job on hand.

There is Goldsmith equipment for every sport. The name "Goldsmith" has been a hallmark of quality for over 65 years.

**The Smith-Watkins Co.**

Distributors

236 E. Main St.

Lexington, Ky.

*Official timing watch for the*



**University of Kentucky vs. Cincinnati**

*Longines*

*The World's Most Honored Watch*

*winner of 10 world's fair grand prizes,*

*28 gold medals, and more honors for*

*accuracy than any other timepiece*

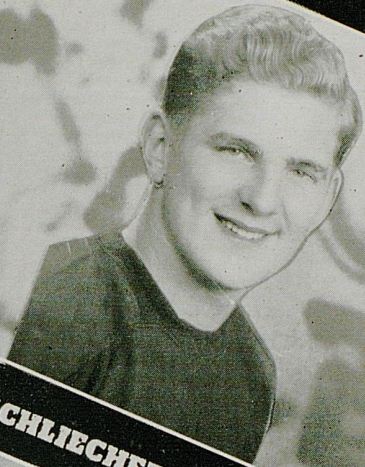


*Product of Longines-Wittnauer Watch Co.*

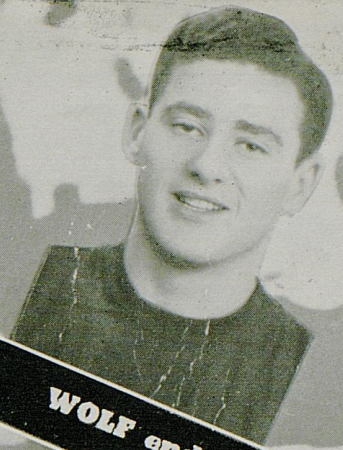
## KENTUCKY SQUAD

| <i>No.</i> | <i>Name</i>        | <i>Position</i> | <i>Year</i> | <i>Weight</i> | <i>Home Town</i>   |
|------------|--------------------|-----------------|-------------|---------------|--------------------|
| 2          | Gardner, Charles   | C               | Sophomore   | 175           | Louisville, Ky.    |
| 5          | Ojurovich,         | G               | Freshman    | 175           | Virginia, Minn.    |
| 6          | McDonough, Bob     | G               | Freshman    | 165           | Cincinnati, Ohio   |
| -8         | Paul, Henry        | T               | Sophomore   | 225           | Paducah, Ky.       |
| -11        | Ray, Babe          | B               | Freshman    | 165           | Louisville, Ky.    |
| -15        | Ferris, Fred       | C               | Sophomore   | 175           | Peoria, Ill.       |
| -16        | Keyser, William    | G               | Freshman    | 180           | Bellaire, O.       |
| 18         | Burgard, Robert    | E               | Freshman    | 160           | Kansas City, Mo.   |
| -20        | Phillips, Hal      | B               | Freshman    | 170           | Louisville, Ky.    |
| -21        | Taylor, Hal        | B               | Freshman    | 170           | Louisville, Ky.    |
| -22        | Beard, Ralph       | B               | Freshman    | 185           | Louisville, Ky.    |
| -23        | Powers, Clayton Ed | C               | Freshman    | 165           | Frankfort, Ky.     |
| 24         | Roberts,           | B               | Freshman    | 160           | Lexington, Ky.     |
| 25         | Pritchard, John    | B               | Freshman    | 170           | Dyersburg, Tenn.   |
| -26        | Pavolovich, Bernie | G               | Freshman    | 180           | Gary, Ind.         |
| -27        | Bomar, David       | G               | Freshman    | 180           | Paris, Tenn.       |
| -28        | Wolf, Emanuel      | E               | Freshman    | 180           | Brooklyn, N. Y.    |
| 29         | Williams, Joe      | B               | Freshman    | 160           | McKenzie, Tenn.    |
| -30        | Weaver, Ike        | B               | Freshman    | 177           | Williamson, W. Va. |
| -31        | Hensley, Dick      | E               | Freshman    | 195           | Williamson, W. Va. |
| -32        | Manley, Leonard    | E               | Freshman    | 160           | Ashland, Ky.       |
| -33        | Granitz, Hartford  | B               | Freshman    | 177           | Ambridge, Pa.      |
| 34         | Hale, Ed           | E               | Sophomore   | 160           | Louisville, Ky.    |
| -35        | Feiring, Bob       | E               | Freshman    | 175           | Kansas City, Mo.   |
| -36        | McInturff, Wilford | G               | Sophomore   | 202           | Pineville, Ky.     |
| -37        | Connet, Mel        | G               | Freshman    | 185           | Kansas City, Mo.   |
| -38        | Campbell, Kenton   | E               | Sophomore   | 195           | Newark, Ohio       |
| -39        | McDonald, Louis    | C               | Sophomore   | 200           | Paducah, Ky.       |
| -40        | Glass, Tom         | B               | Freshman    | 160           | Georgetown, Ky.    |
| -41        | Schliecher, Bob    | E               | Freshman    | 185           | Gary, Ind.         |
| 42         | Perkins, Norman    | T               | Freshman    | 190           | Erlanger, Ky.      |
| -43        | Englisis, Nick     | T               | Sophomore   | 212           | Brooklyn, N. Y.    |
| -44        | Yost, Roger        | B               | Sophomore   | 185           | Kansas City, Mo.   |
| 45         | McManus, Jim       | G               | Freshman    | 185           | Dayton, Ohio       |
| -46        | Vonnahme, Dick     | C               | Freshman    | 195           | Louisville, Ky.    |
| -47        | Shannon, Hugh      | T               | Sophomore   | 225           | Huntington, W. Va. |
| -48        | Serini, Wash       | T               | Sophomore   | 225           | Tuckahoe, N. Y.    |
| -50        | Haas, Gene         | G               | Sophomore   | 186           | Ironton, Ohio      |
| -51        | Thomas, Hobey      | B               | Sophomore   | 165           | Beaver Falls, Pa.  |
| -53        | Smithson, Ben      | G               | Freshman    | 185           | Hopkinsville, Ky.  |
| -55        | Tunstill, Jesse    | B               | Junior      | 180           | Paducah, Ky.       |
| -66        | Chambers, Bill     | B               | Sophomore   | 165           | Huntington, W. Va. |
| -77        | Barnett, Jim       | B               | Freshman    | 165           | Huntington, W. Va. |
| -88        | Blanda, George     | B               | Freshman    | 190           | Youngwood, Pa.     |
| -99        | Beal, Dick         | B               | Sophomore   | 175           | Covington, Ky.     |

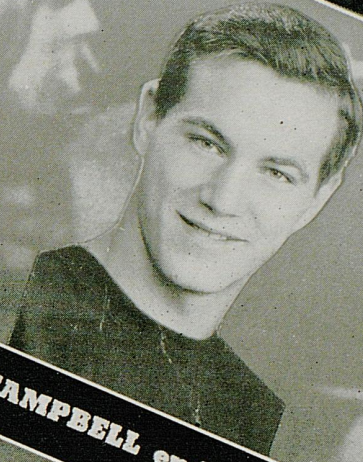
*"The Official Watch For Timing Today's Game Is LONGINES—THE WORLD'S MOST HONORED WATCH"*



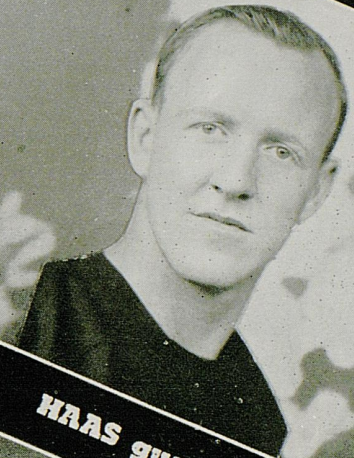
**SCHLIECHER end**



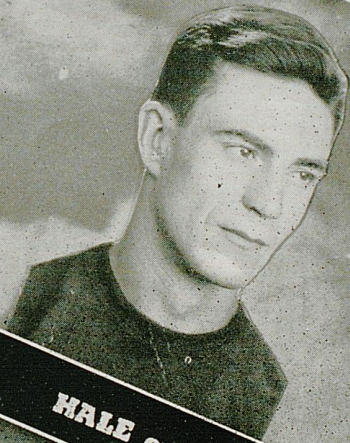
**WOLF end**



**CAMPBELL end**



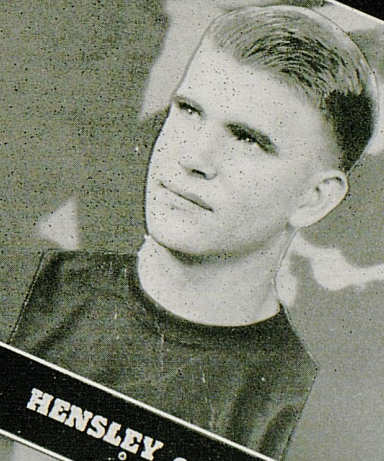
**HAAS guard**



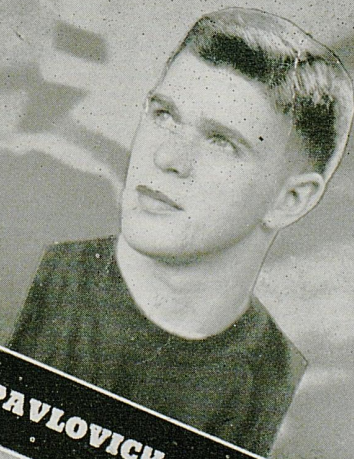
**HALE end**



**MANLEY end**



**HENSLEY end**



**PAVLOVICH guard**

# KENTUCKY

**A ALWAYS Milder**

**B BETTER TASTING**

**KENTUCKY**

**STARTING LINEUP**

LE Paul Hensley LT Serini LG McDonald C Haas RG Shannon RT Schliecher RE

QB  
Granitz

LH Ray FB Barnett RH Phillips

**SQUAD LIST**

- |                 |                  |                |
|-----------------|------------------|----------------|
| 2 Gardner, c    | 23 Wolf, e       | 42 Perkins, t  |
| 6 McDonough, g  | 29 Williams, b   | 43 Englis, t   |
| 8 Paul, t       | 30 Weaver, b     | 44 Yost, b     |
| 11 Ray, b       | 31 Hensley, e    | 45 McManus, g  |
| 15 Ferris, c    | 32 Manley, e     | 46 Vonnahme, e |
| 16 Keyser, g    | 33 Granitz, b    | 47 Shannon, t  |
| 18 Burgard, e   | 34 Hale, e       | 48 Serini, g   |
| 20 Phillips, b  | 35 Feiring, e    | 50 Haas, g     |
| 21 Taylor, b    | 36 McInturff, g  | 51 Thomas, b   |
| 22 Beard, b     | 37 Connet, g     | 53 Smithson, g |
| 23 Powers, c    | 38 Campbell, e   | 55 Tunstill, b |
| 24 Roberts, b   | 39 McDonald, c   | 66 Chambers, b |
| 25 Prichard, b  | 40 Glass, b      | 77 Barnett, b  |
| 26 Pavlovich, g | 41 Schliecher, e | 88 Blanda, b   |
| 27 Bomar, g     |                  | 99 Beal, b     |

**OFFICIALS**

J. D. Thomason—Referee  
C. R. Harrington—Umpire



**Always Buy CHESTERFIELD**



ER  
STING

40

20

10

**C COOLER SMOKING**

**FOR MORE SMOKING PLEASURE**

**WESTFIELD**

**CINCINNATI**

**STARTING LINEUP**

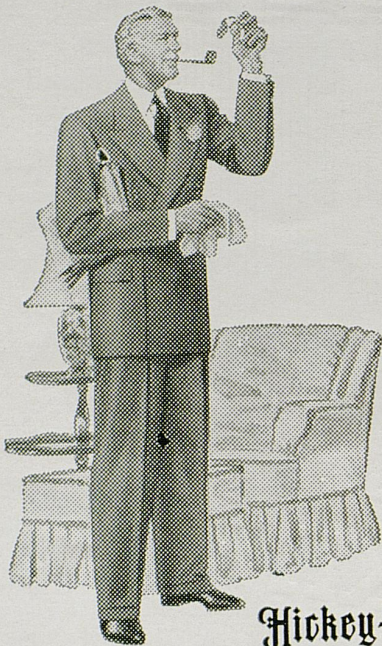
|          |       |          |        |       |        |       |
|----------|-------|----------|--------|-------|--------|-------|
| LE       | LT    | LG       | C      | RG    | RT     | RE    |
| Ruehlman | Allen | Kniesner | Pitman | Hanna | Bolser | Drake |
| 88       | 91    | 56       | 72     | 84    | 90     | 82    |
| QB       |       |          |        |       |        |       |
| Hunt     |       |          |        |       |        |       |
| 11       |       |          |        |       |        |       |
| LH       |       |          |        |       |        |       |
| Klusman  |       |          |        |       |        |       |
| 65       |       |          |        |       |        |       |
| FB       |       |          |        |       |        |       |
| Townsend |       |          |        |       |        |       |
| 76       |       |          |        |       |        |       |
| RH       |       |          |        |       |        |       |
| Leigh    |       |          |        |       |        |       |
| 68       |       |          |        |       |        |       |

**SQUAD LIST**

|                    |                   |                  |
|--------------------|-------------------|------------------|
| 16 McDermott, g    | 53 Williams, g    | 70 DeGarmo, b    |
| 19 Mitchell, t     | 54 McMahon, g     | 71 Scardina, g   |
| 24 Helmers, c      | 55 Faris, g       | 73 Weaver, e     |
| 25 Feeney, g       | 57 Fenzel, b      | 74 Abbott, g     |
| 28 Lowrey, c       | 58 Hanna, g       | 75 Piche, e      |
| 31 Grosshandler, e | 59 Uphoff, e      | 77 Snively, c    |
| 39 Schmitz, g      | 60 Griest, b      | 78 Workman, t    |
| 40 Kraushar, g     | 61 Queen, b       | 79 Hollaender, g |
| 41 Brumfield, c    | 62 Prewitt, e     | 80 Avra, b       |
| 44 Turner, c       | 63 Williams, b    | 81 Ramsey, e     |
| 47 Todd, t         | 64 Schneider, b   | 83 Slater, e     |
| 50 Kuhn, t         | 66 DeAutremont, b | 85 Karle, b      |
| 51 Amlin, b        | 67 Yeager, e      | 86 Citron, c     |
| 52 Lane, e         | 69 Nolting, b     | 87 Fleming, t    |
|                    |                   | 89 Putman        |

**OFFICIALS**

Luke Woodall—Linesman  
Jerry Baker—Field Judge



**Hickey-Freeman**  
CUSTOMIZED CLOTHES

## NOT TOMORROW But Soon!

That new HICKEY-FREEMAN suit you have been promising yourself may not be available tomorrow. But new HICKEY - FREEMAN suits will soon find their way back on our racks—more styleful, more impressive than ever. These fine Customized clothes are the wisest clothing investment today . . . and it only takes one HICKEY-FREEMAN to prove it!



### IT PAYS TO PLAY

O'Shea two-way stretch football pants, O'Shea award sweaters, Goldsmith football and basketball supplies, Converse basketball shoes and physical education items are very scarce. However, if you will contact us at once, maybe we can supply your school like we did the University of Kentucky this season with the above "Hard to Get" items.

**HUNT'S ATHLETIC GOODS CO.**

Phone No. 103

MAYFIELD, KENTUCKY

*"The Largest Independent Exclusive Athletic House In The South"*

## ATHLETIC EQUIPMENT

For Every Sport

WHOLESALE PRICES  
TO SCHOOLS AND COLLEGES

Write for Catalog

## The Sutcliffe Co.

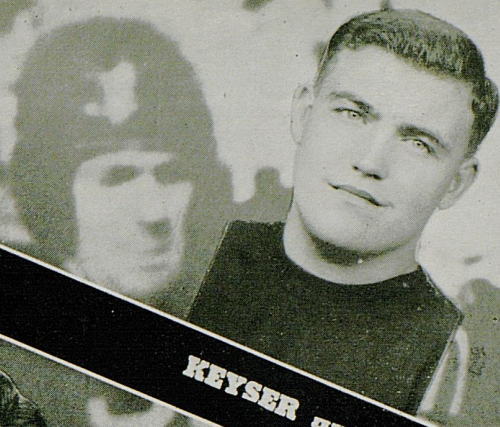
Incorporated

LOUISVILLE, KY.

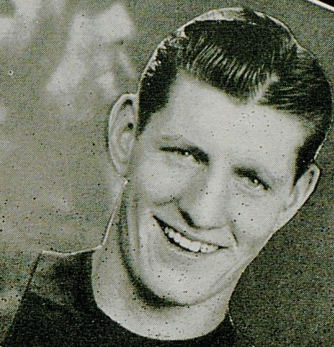




**TUNSTILL** back



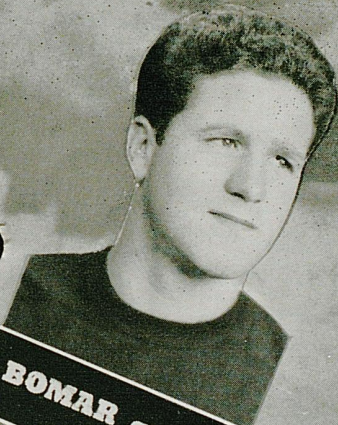
**KEYSER** guard



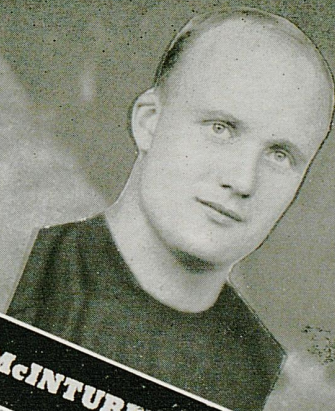
**SMITHSON** guard



**CHAMBERS** back



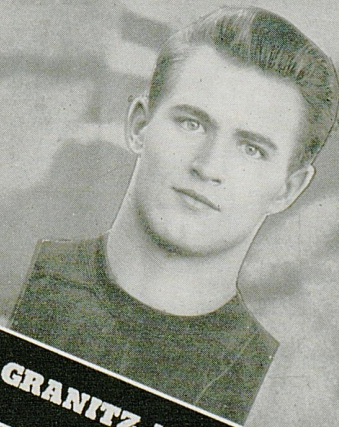
**BOMAR** guard



**McINTURFF** guard

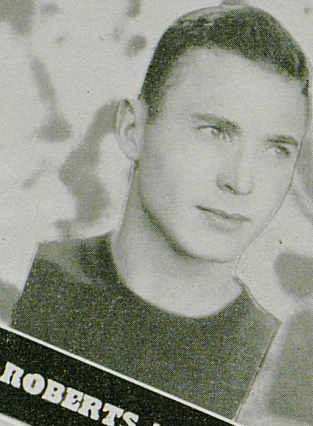


**BEARD** back



**GRANITZ** back

# KENTUCKY



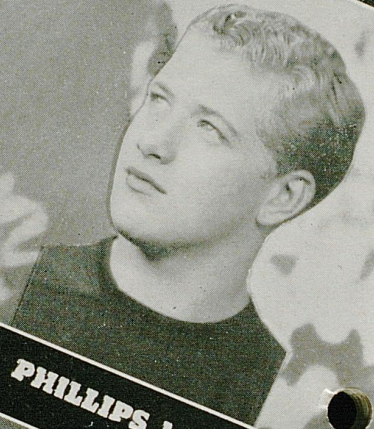
**ROBERTS back**



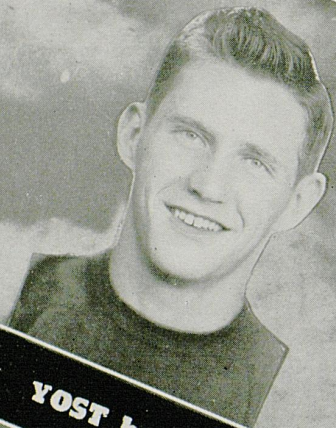
**BARNETT back**



**WEAVER back**



**PHILLIPS back**



**YOST back**



**PRICHARD back**



**RAY back**



**BEAL back**

# KENTUCKY

*Complete Coverage  
of  
Kentucky Sports*



The Courier-Journal  
THE LOUISVILLE TIMES  
Radio Station WHAS

MEET AFTER THE GAME IN

*Canary  
Cottage*

AIR-CONDITIONED  
FOR YOUR  
COMFORT

128 E. MAIN

The South's Most Beautiful  
Cocktail Lounge . . .

also

•Louisville

•Indianapolis

and

French Village Louisville

Cropper's Laundry

BEST WISHES FOR A

HAPPY SEASON FOR

WILDCAT PLAYERS AND FANS

# WHAT THE SIGNALS MEAN



Holding. (Penalty—by offense, 15 yards; by defense, 5 yards.)



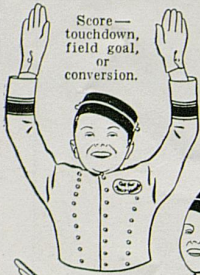
Offside or violation of kick-off formation. (Penalty, 5 yards.)



Illegal forward pass.



Crawling or pushing, 5 yards; helping ball carrier, 15 yds.



Score—touchdown, field goal, or conversion.



Unnecessary roughness, illegal defensive use of the hands, clipping, running into or roughing the kicker. (Penalty, 15 yards.)



Player illegally in motion. (Penalty, 5 yards. If from shift or huddle, 15 yards.)



Penalty refused, incomplete pass, missed field goal or conversion, both sides offside, etc.



Interference with forward pass. (If penalty on offense, when interference occurs beyond line of scrimmage, 15 yards and loss of down.)

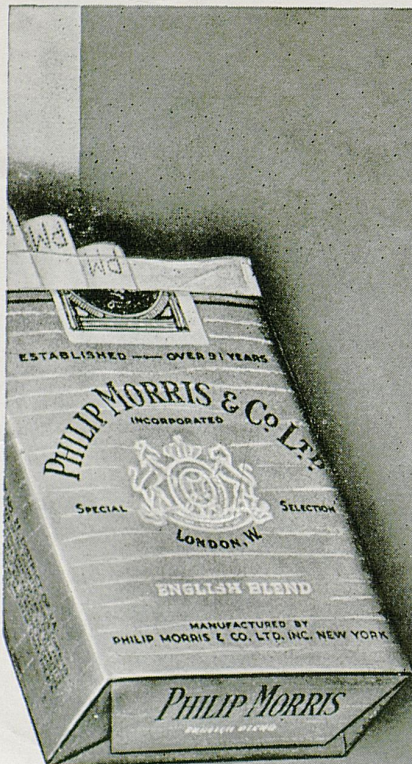


Safety.

Delay of game or extra time-outs. (Penalty, 5 yards.)



Time out.



## PHILIP MORRIS' SUPERIORITY RECOGNIZED

BY EMINENT MEDICAL AUTHORITIES!

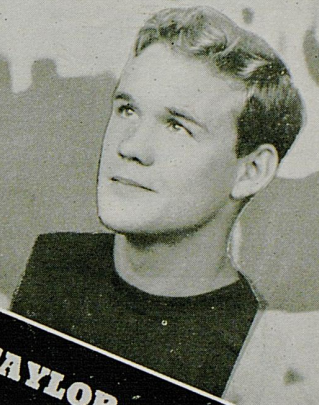
This finer-tasting cigarette is also far more considerate of your nose and throat . . . scientifically proved far less irritating to the smoker's nose and throat! So—

CALL FOR **PHILIP MORRIS**

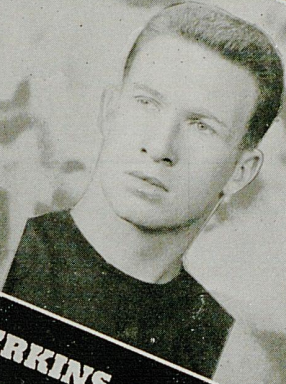
America's *FINEST* Cigarette



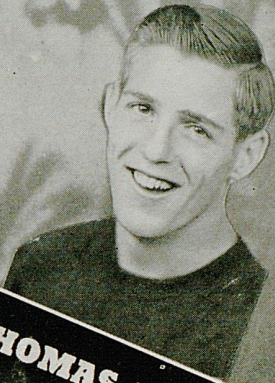
**OJUROVICH** guard



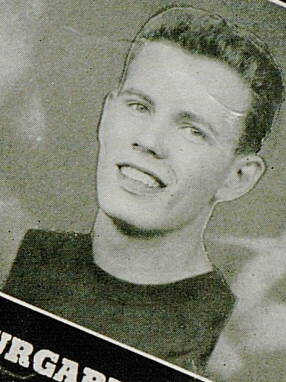
**TAYLOR** back



**PERKINS** tackle



**THOMAS** back



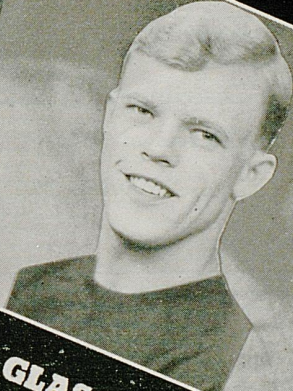
**BURGARD** end



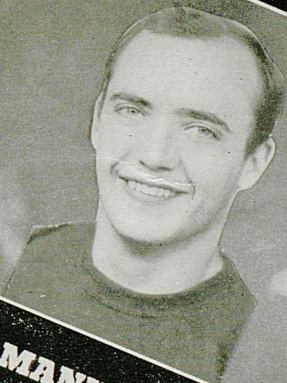
**VONNAHME** center



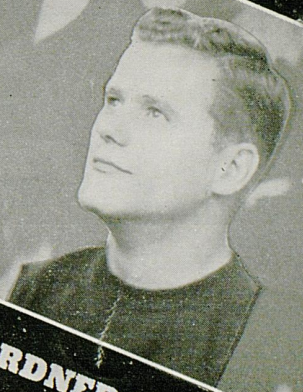
**McDONOUGH** guard



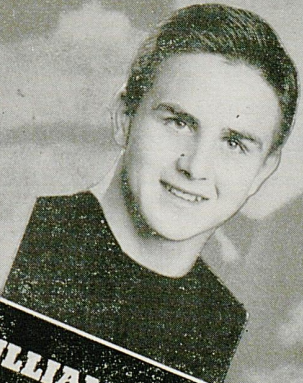
**GLASS** back



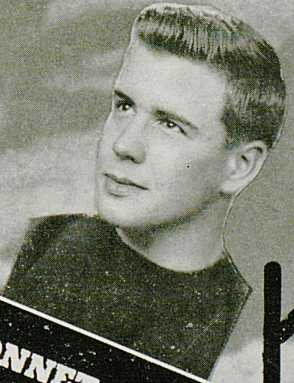
**McMANUS** tackle



**GARDNER** center



**WILLIAMS** back



**CONNET** tackle

# KENTUCKY



# GO YOU WILDCATS



**Hit 'Em Hard!**

**Hit 'Em Low!**

Compliments

of

**Bryan-Hunt Company**

(Incorporated)

WHOLESALE GROCERS

Lexington, Kentucky

Compliments of

**ADES-LEXINGTON DRY GOODS CO.**

Lexington, Kentucky

Compliments of

**GAIDRY MOTORS**

MERCURY



LINCOLN

255 E. Main

Lexington, Ky.

**Kentucky Ignition Co., Inc.**

"Distributors Automotive Equipment"

Rose Street at Vine

Lexington, Ky.

PHONES 2681 - 2682 - 2683

Compliments

of

**R. S. THORPE & SONS**

125 E. MAIN STREET

Long Distance Phone L. D. 99

City Phones 7760, 7761, 7762, 7763

**Wombwell Automotive  
Parts Company**

(Incorporated)

THE PARTS AND EQUIPMENT HOUSE

151-153-155 East Short Street

LEXINGTON, KENTUCKY

For PERFECT DRY CLEANING Phone 62

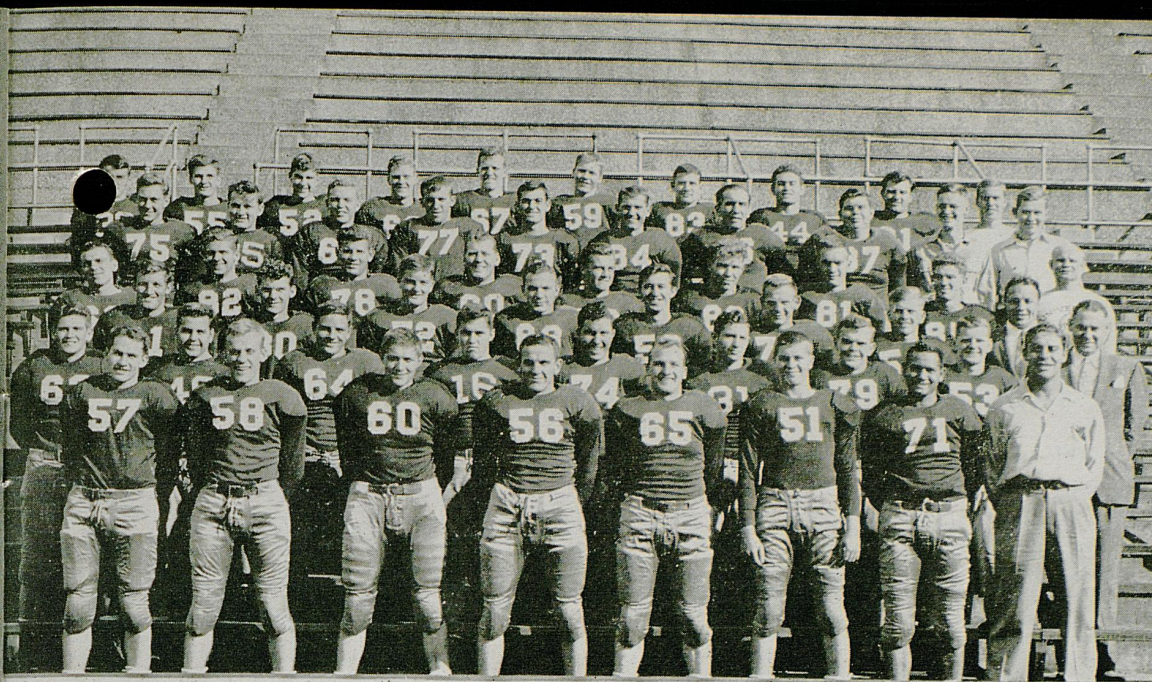
**Lexington Laundry Company**

**Union Transfer & Storage Co.**

MOVING AND STORAGE

Spring and Vine Streets

Phone 7030

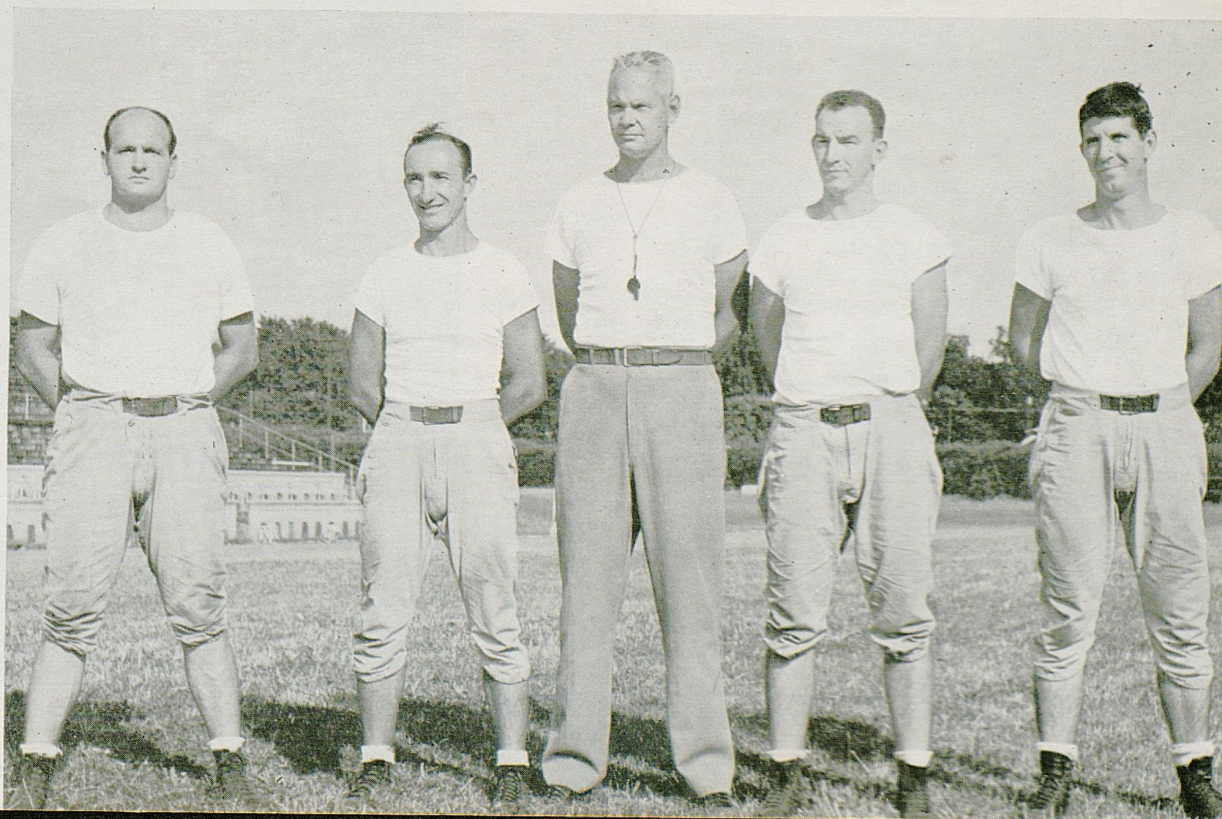


UNIVERSITY  
OF  
CINCINNATI  
1945

First row, left to right: Al Fenzel, C. Hanna, H. Griest, W. Kniesner, L. Klusman, K. Amlin, V. Scardina, Coach R. Nolting  
 Second row: J. Williams, R. Kraushar, J. DeAutremont, J. McDermott, C. Abbott, S. Grosshandler, D. Hollander, J. Williams, M. Chas. Mileham, Athletic Director.  
 Third row: R. Queen, C. Avra, L. Pitman, E. Ruehlmann, J. Hunt, J. Townsend, J. Schmitz, Line Coach J. Wiethe.  
 Fourth row: R. Nolting, H. Drake, H. Workman, H. Bosler, A. De Garmo, H. Putman, J. Ramsey, E. Karle, J. Kelp, Trainer.  
 Fifth row: E. Piche, E. Feeney, J. Prewitt, E. Snively, L. Weaver, R. Meador, C. Henderson, R. Fleming, P. Outcalt, Student Manager, J. Jones, Student Manager.  
 Sixth row: J. McMahon, J. Faris, E. Lane, W. Leigh, P. Yeager, D. Uphoff, B. Slater, H. Turner, J. Allen, E. Ullom, Freshman, Manager.

KENTUCKY COACHING STAFF

JACOBS, GILB, SHIVELY, BOSTICK, AND TAYLOR



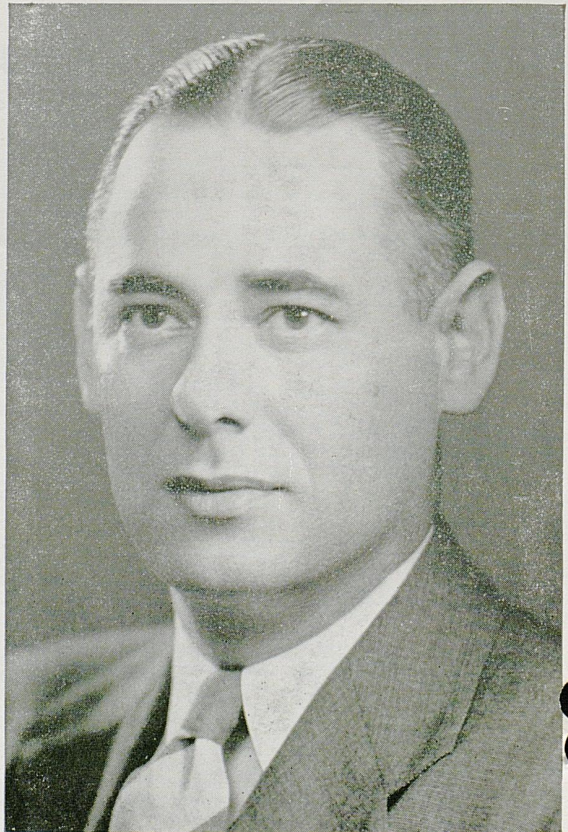


---

MR. RAY A. NOLTING

Head Coach

---



---

MR. M. CHARLES MILEHAM

Director of Physical Education and Athletics

---



## CINCINNATI SQUAD

| <i>No.</i> | <i>Name</i>  | <i>Position</i> | <i>Yr. on Squad</i> | <i>Wt.</i> | <i>Home Town</i>     |
|------------|--------------|-----------------|---------------------|------------|----------------------|
| 16         | McDermott    | G               | 1                   | 172        | Wilmington, Ohio     |
| 19         | Mitchell     | T               | 1                   | 185        | Cincinnati, Ohio     |
| 24         | Helmers      | C               | 2                   | 221        | Cincinnati, Ohio     |
| 25         | Feeney       | G               | 1                   | 180        | Cincinnati, Ohio     |
| 28         | Lowrey       | C               | 1                   | 185        | North Ridge, Ohio    |
| 31         | Grosshandler | E               | 1                   | 157        | Youngstown, Ohio     |
| 39         | Schmitz      | G               | 1                   | 165        | Dayton, Ohio         |
| 40         | Kraushar     | G               | 3                   | 163        | Cincinnati, Ohio     |
| 41         | Brumfield    | C               | 1                   | 190        | Cincinnati, Ohio     |
| 44         | Turner       | C               | 1                   | 200        | Cynthiana, Ky.       |
| 47         | Todd         | T               | 1                   | 220        | Laura, Ohio          |
| 50         | Kuhn         | T               | 1                   | 200        | Cincinnati, O.       |
| 51         | Amlin        | B               | 1                   | 156        | Miamisburg, O.       |
| 52         | Lane         | E               | 1                   | 157        | Bellevue, Ky.        |
| 53         | Williams     | G               | 1                   | 156        | Cincinnati, O.       |
| 54         | McMahon      | G               | 1                   | 166        | Bellaire, Ohio       |
| 55         | Faris        | G               | 1                   | 161        | Ludlow, Ky.          |
| 57         | Fenzel       | B               | 1                   | 168        | Hamilton, O.         |
| 58         | Hanna        | G               | 1                   | 165        | New Philadelphia, O. |
| 59         | Uphoff       | E               | 1                   | 180        | Cincinnati, O.       |
| 60         | Griest       | B               | 3                   | 168        | Middletown, O.       |
| 61         | Queen        | B               | 1                   | 182        | Wayne, W. Va.        |
| 62         | Prewitt      | E               | 1                   | 168        | Williamsburg, O.     |
| 63         | Williams, J. | B               | 1                   | 160        | Bellaire, O.         |
| 64         | Schneider    | B               | 3                   | 165        | Miamisburg, O.       |
| 66         | DeAutremont  | B               | 1                   | 161        | Hanging Rock, O.     |
| 67         | Yeager       | E               | 1                   | 174        | Bellevue, Ky.        |
| 69         | Nolting      | B               | 3                   | 177        | Cincinnati, O.       |
| 70         | DeGarmo      | B               | 2                   | 176        | Cincinnati, O.       |
| 71         | Scardina     | G               | 1                   | 170        | Cincinnati, O.       |
| 73         | Weaver       | E               | 1                   | 165        | Cincinnati, O.       |
| 74         | Abbott       | G               | 1                   | 165        | Reading, O.          |
| 75         | Piche        | E               | 1                   | 174        | Newark, O.           |
| 77         | Snively      | C               | 1                   | 184        | Bellaire, O.         |
| 78         | Workman      | T               | 1                   | 201        | Bellaire, O.         |
| 79         | Hollaender   | G               | 2                   | 165        | Cincinnati, O.       |
| 80         | Avra         | B               | 1                   | 159        | Lockland, O.         |
| 81         | Ramsey       | E               | 1                   | 184        | Mt. Healthy, O.      |
| 83         | Slater       | E               | 1                   | 190        | Erlanger, Ky.        |
| 85         | Karle        | B               | 1                   | 175        | Cincinnati, O.       |
| 86         | Citron       | C               | 2                   | 210        | Newport, Ky.         |
| 87         | Fleming      | T               | 1                   | 250        | Shadyside, O.        |
| 89         | Putnam       | G               | 1                   | 182        | Cincinnati, O.       |

# University of Kentucky Basketball Squad

1945 Champions of Southeastern Conference



FRONT ROW—Left to Right—Waits, Nelson, Parker, Yeary, Derrickson, Reynolds, Allin.

SECOND ROW—Coach Rupp, Schu, Parkinson, Tingle, Cooper, Stough, Sturgill, Chambers, Parks, Manager, Mann, Trainer.

THIRD ROW—Campbell, Compton, Durham, Sparkman, Duff, Groza, Allen, Howe, Weiner.

## ATHLETIC STAFF

|                                           |       |                      |
|-------------------------------------------|-------|----------------------|
| Athletic Director and Head Football Coach | ----- | Bernie A. Shively    |
| Line Coach                                | ----- | Lew Bostick          |
| End Coach                                 | ----- | Elmer (Baldy) Gilb   |
| Assistant Football Coaches                | ----- | Paul Walker and      |
| (Worked During Summer Only)               |       | Sully Jacobs         |
| Head Basketball Coach                     | ----- | Adolph Rupp          |
| Assistant Basketball Coach                | ----- | Elmer (Baldy) Gilb   |
| Tennis Coach                              | ----- | Dr. H. H. Downing    |
| Golf Coach                                | ----- | S. A. Boles          |
| Ticket-Sales Manager                      | ----- | S. A. (Daddy) Boles  |
| Trainer                                   | ----- | Frank (Skipper) Mann |
| Secretary                                 | ----- | Mrs. Helen Shober    |
| Publicity Director                        | ----- | Ed Templin           |

Let's All Meet at . . . .

# Walgreen's

After The Game!

The winning play after the game is to head straight for Walgreen's for a really delicious treat. Whether your appetite signals for a refreshing soda or a complete dinner, you'll find exactly what you want, skillfully prepared and properly served. At any hour of the day or evening, you'll find Walgreen's the ideal place to eat.

### *Tempting Suggestions:*

**DOUBLE DIP CHOCOLATE SUNDAE**

Rich, smooth, doubly-delicious!

**DELICIOUS DINNERS**

A varied menu of favorite dishes!

**TASTY SANDWICHES**

Every bite a real delight!

**DELIGHTFUL LUNCHEONS**

A fine selection: nourishing, tasty!

**YOU'RE ALWAYS WELCOME AT WALGREEN'S**

140 WEST MAIN STREET

Share The Fun Of  
Your  
Kodachrome Transparencies

with

**BEAUTIFUL  
MINICOLOR PRINTS**

Three sizes are available. . .the popular size for overseas mailing is 2X (about 2¼ x 3¼ in.)

Place Your Orders Through Us.

**Tinder-Krauss-Tinder**

Opticians—Photographic Supplies

145 North Upper St. Phone 5080

WHY BE IRRITATED?

—LIGHT AN  
**OLD GOLD**

Apple Honey helps guard O.Gs.  
from Cigarette Dryness

Old Gold CIGARETTES

PLAIN OR TIPPED  
UNION MADE



Raleigh