

# RICHMOND

INCLUDING SILVER CREEK  
Madison County KENTUCKY

**SANBORN** Map COMPANY  
New York

**MAY 1926**

Copyright 1926 by the Sanborn Map Co.

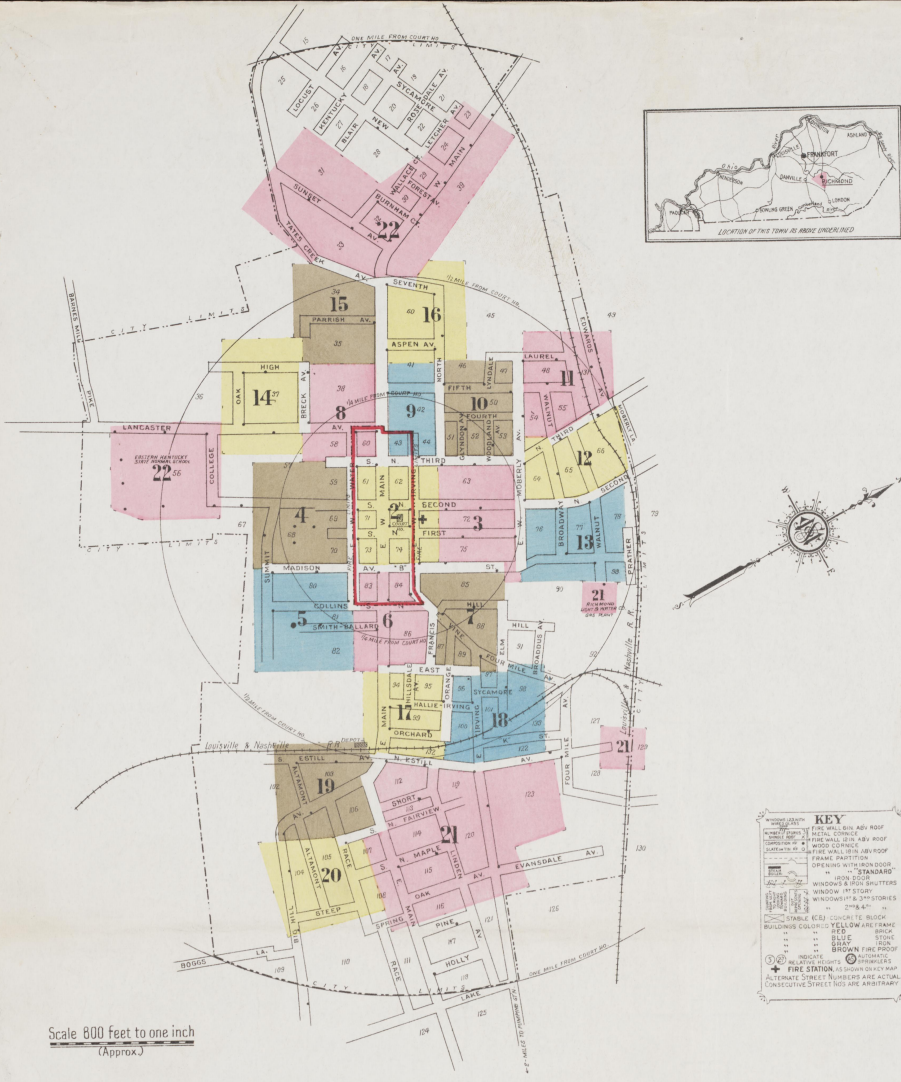
JUL 16 '26

Population 6300  
Prevailing Winds, South West.

**Water Facilities,**  
Gravity system of water works owned by a private company. Water supply from natural reservoir located 2 1/2 miles S. E. of Court No. 60, 350 million gals. Water drawn from reservoir through 16" suction to pumping station; at reservoir, electric lift is pumped through 12" main into 125,000 gal. stand pipe located 1/2 mile W. of Court No. 60. Elevated 120 ft. above business section or directly into mains by two Worthington duplex pumps (2-20-12-45) 1 1/2 million gals. each per day.

**Fire Department,**  
One chief and volunteer company of 13 men, and 2 fully paid men.  
One fire station.  
One American-La France triple combination auto truck with 200 gall. pump, 30 gall. chemical tank, 100 ft. chemical hose, 1000 ft. 2 1/2" hose and 450 ft. 2 1/2" hose in reserve.

Fire alarm by telephone.  
Fire alarm bell at fire station.



Scale 800 feet to one inch (Approx.)

## INDEX

STREETS		SPECIALS	
Altamont, A	300-911 19	American Tobacco Co., Priding Room	11
Aspen Ave.	100-115 20	Arnold, Hamilton & Luxon, Whol. Grocery	18
B Street, B	100-222 22	Broadus & Robinson, Coal Yard	17
Big Hill Ave.	100-339 19	Burke, W. O., Tobacco Hanging	15
Breck Ave.	241-2186, arbitrary 24	Calvary Baptist Church	19
Broadus Ave.	401-453 14	Calvinist Baptist Church (Colored)	19
Broadway	15-37, arbitrary 12	Christ Episcopal Church	8
Burnam Court	100-141 13	Church of The Nazarene	16
Chamber Lane (arbitrary)	15	City Hall	10
Charvoix Road (arb.) at Silver Creek	18	Clay, Pattie A., Infirmary	10
Collins, N.	100-125 6	County Court, House and Jail	22
Druce (arbitrary)	15	Creesh, J., Coal Yard	22
East	100-212 *6	Crutcher, W., Tobacco Barn	21
Edwards Ave.	300-665 11	Dixie Hotel	18
Estill Ave., N.	400-447 7 & 18	East End Stock Yards	19
Estill Ave., S.	101-359 *21	Eastern Kentucky State Normal School	22
Fairview, N.	300-388 *18	Farmers Supply Co., Coal and Grain	17
Forrest Ave.	300-454 *8	Federal Building	9
Fourth, N.	301-453 *14	Fire Department	9
Fourth, S.	300-365 10	First Baptist Church	8
Franklin	300-450 *6	First Baptist Church (Colored)	6
Forrest Ave.	301-351 *7	Hotel	17
Glyndon Ave.	300-343 10	Lumber Co.	6
Hallie-Irvine	300-339 18	Mark & Light Co., Pumping Station and Gas Plant	21
Heath, see Altamont	300-409 14	St. Mark's Roman Catholic Church	15
High	300-375 7	Paul A. M. E. Church	7
Hillsdale Ave.	300-525 17	Sims A. L., Crst. Mill	15
Irvine, E.	100-135 2	Savage-Whelan Lumber Co., Planing Mill, Etc.	19
Irving	200-570 *6	Schlegel Apartments	12
K Street	201-253 *7	Second Christian Church	19
Lancaster Ave.	477-724 18	Presbyterian Church	2
Lancaster Ave., S.	300-470 7	Standard Oil Co.	17
Lancaster Ave., Pike, at Silver Creek	300-125 21	United American Co., Warwick Distillery (former site)	15
Laurel	345-365 16	Zaring, J. W., Grain and Mill Co.	6
Letcher	400-448 17		
Letcher Ave., see S. Estill Ave.	800-1215 21		
Linden Ave.	500-821 10		
Lyndale	100-116 *2		
Madison Ave.	101-117 *6		
Main E.	201-276 *5		
Main E., W.S.E. Water to Summit	400-317 *1		
Main E.	200-469 6		
Main E.	500-715 17		
Main E.	300-914 19		
Main E.	801-515 *21		
Main E.	1000-1501 21		
Main E.	100-251 2		
Main E.	300-520 8		
Main E.	301-515 *9		
Main E.	527-729 16		
Main E.	528-724 15		
Main E.	800-1055 22		
Main E.	1504-1656, arbitrary 22		
Maple, N.	100-215 21		
Moberly Ave., E.	30-21 6		
Moberly Ave., E.	100-108 *3		
Moberly Ave., E.	101-135 *13		
Moberly Ave., E.	200-520 10		
Moberly Ave., E.	201-319 12		
Moberly Ave., E.	321-525 11		
Moberly Lane	12		
New, N.	22		
North	300-514 *9		
North	100-521 2		
North	521-650 16		
Oak, Ave.	400-451 14		
Orange	300-435 7		
Orchard	500-614 17		
Orchard	501-515 10		
Orchard	100-157 17		
Parrish Ave.	100-171 15		
Race	900-915 19		
Race	1000-1205 20		
Second, N.	100-227 2		
Second, N.	228-335 3		
Second, N.	400-624 12		
Second, N.	401-613 13		
Second, N.	100-121 2		
Second, N.	300-325 4		
Second, N.	629-537, arbitrary 4		
Second, N.	N. of College 22		
Seventh	100-151 21		
Short	100-128 6		
Smith-Ballard	129-170 6		
Spring	21		
Steep	200-335 20		
Summit	100-219 4		
Sunat Ave.	229-315 5		
Sycamore	22		
Tates Creek Ave.	400-415 18		
Third, N.	100-198 *22		
Third, N.	101-137 *15		
Third, N.	100-222 *9		
Third, N.	101-217 *2		
Third, N.	219-367 *3		
Third, N.	300-570 10		
Third, N.	490-429 12		
Third, N.	500-624 *11		
Third, N.	501-622 12		
Third, N.	100-224 *8		
Third, N.	101-121 *2		
Third, N.	201-225 *4		
Wallace Court	22		
Walnut	1-18 21		
Walnut	19-132 15		
Walnut	200-515 12		
Walnut	301-335, arbitrary 12		
Walnut	400-404 *12		
Walnut	401-605 11		
Walnut	406-443 11		
Water, E.	100-150 3		
Water, E.	101-149 *3		
Water, E.	200-250 *6		
Water, E.	201-149 3		
Water, E.	201-251 12		
Water, E.	100-228 *4		
Water, E.	101-215 *2		
Water, E.	200-335 3		
Woodland Ave.	300-339 10		

\* Indicates only one side of Street shown.



2

8

9

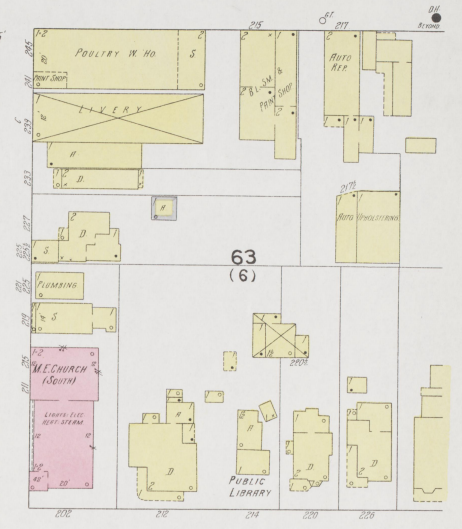
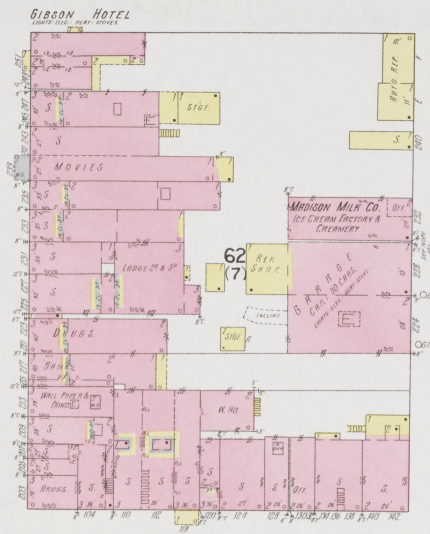
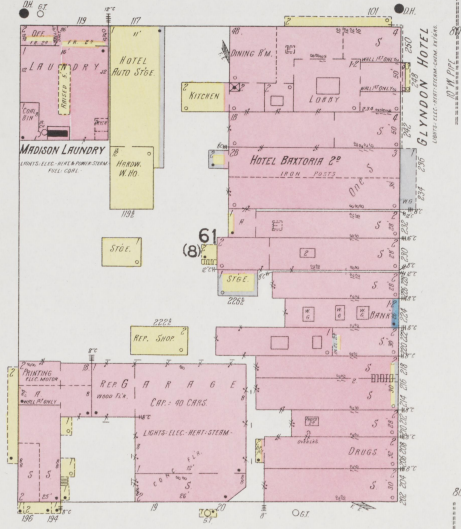
MAY 1926  
RICHMOND  
KY.

2

12780  
NORTH ST

S. 3RD ST.

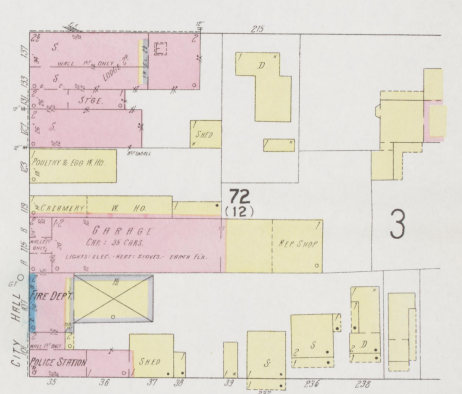
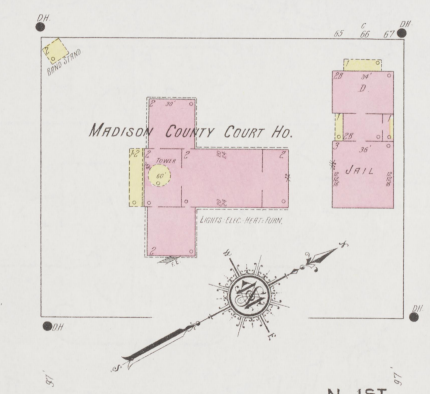
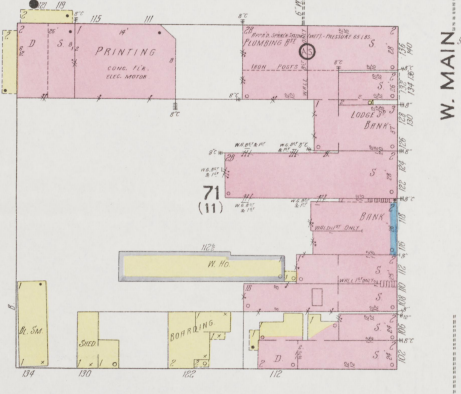
N. 3RD ST.



W. WATER

S. 2ND ST.

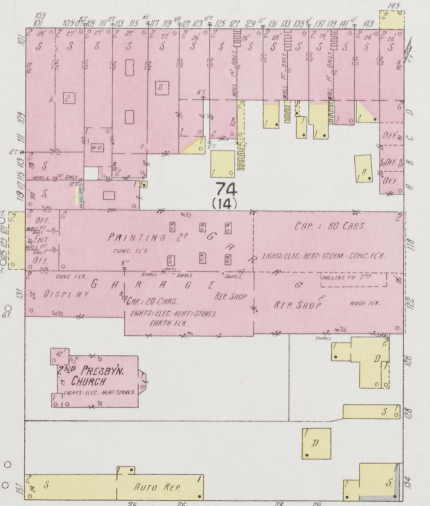
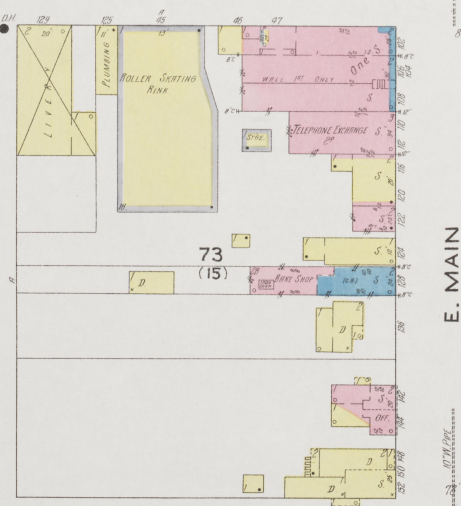
N. 2ND ST.



4

S. 1ST ST.

N. 1ST ST.



E. WATER

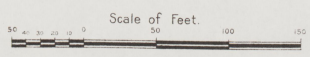
MADISON AV. (S. B ST.)

E. MAIN

(N.) B

E. IRVINE

7



Copyright 1926 by the Sanborn Map Co



3

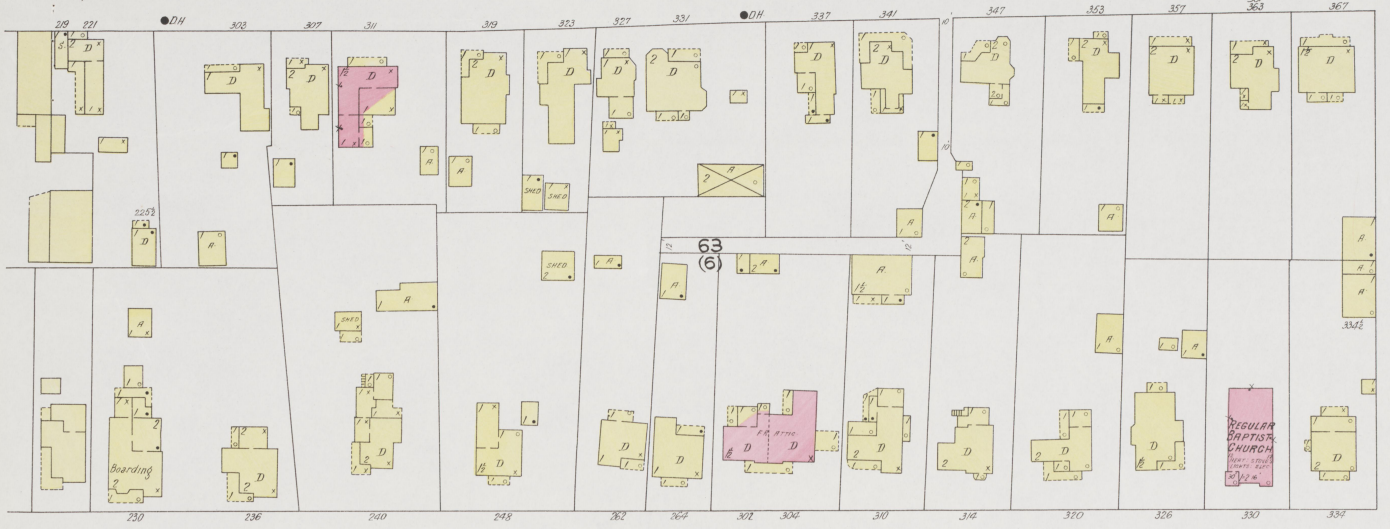
NORTH ST

10

MAY 1926  
RICHMOND  
KY.

3

N. 3RD ST.



12

W. MOBERLY AV.

N. 2ND ST.



2

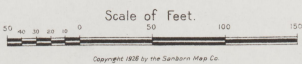
13

E. MOBERLY AV.

N. 1ST ST.



B ST. (NORTH B ST.)



Copyright 1926 by the Standard Map Co.

7



4

MAY 1926  
RICHMOND  
KY.

4

57

8

S. 3RD ST.

(9)

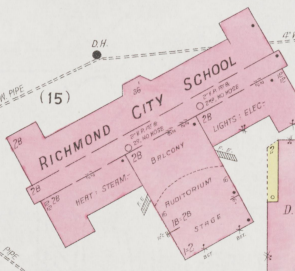
59

S. 2ND ST.

69

(10)

S. 1ST ST.

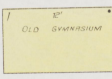


67

(1-A)

SUMMIT

68

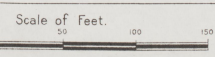


(16)

70

MADISON AV. (S. B ST.)

5



Copyright 1926 by the Sanborn Map Co.

W. WATER

E. WATER

(270)

38



MADISON AV. (SOUTH B ST.)

SUMMIT

E. WATER

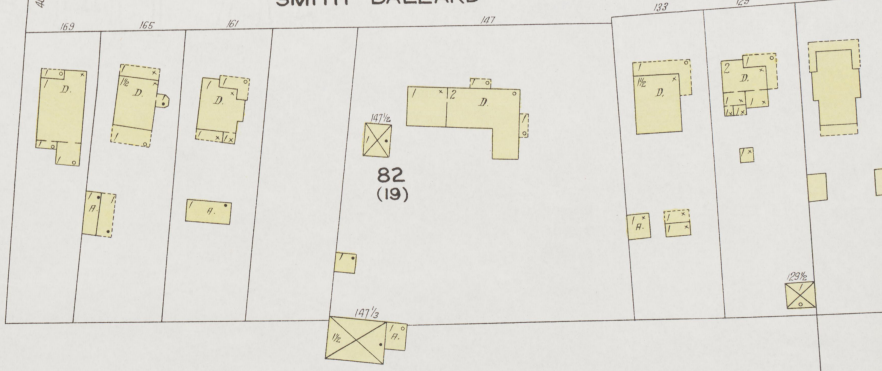
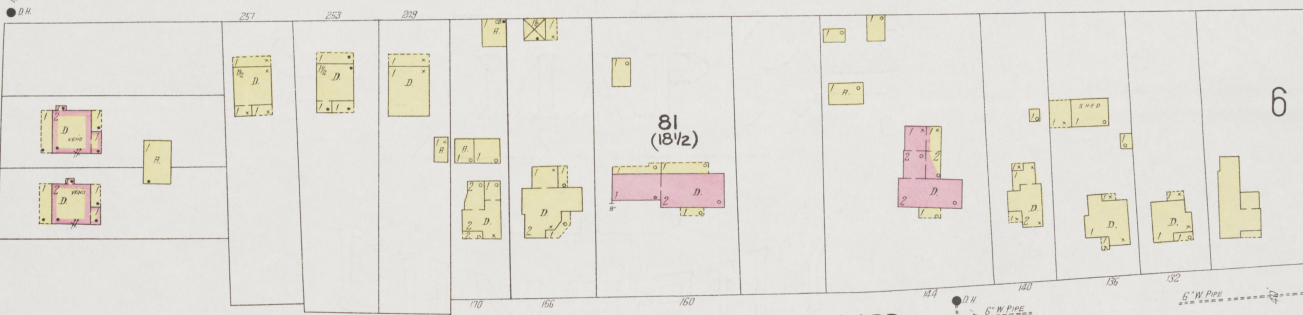
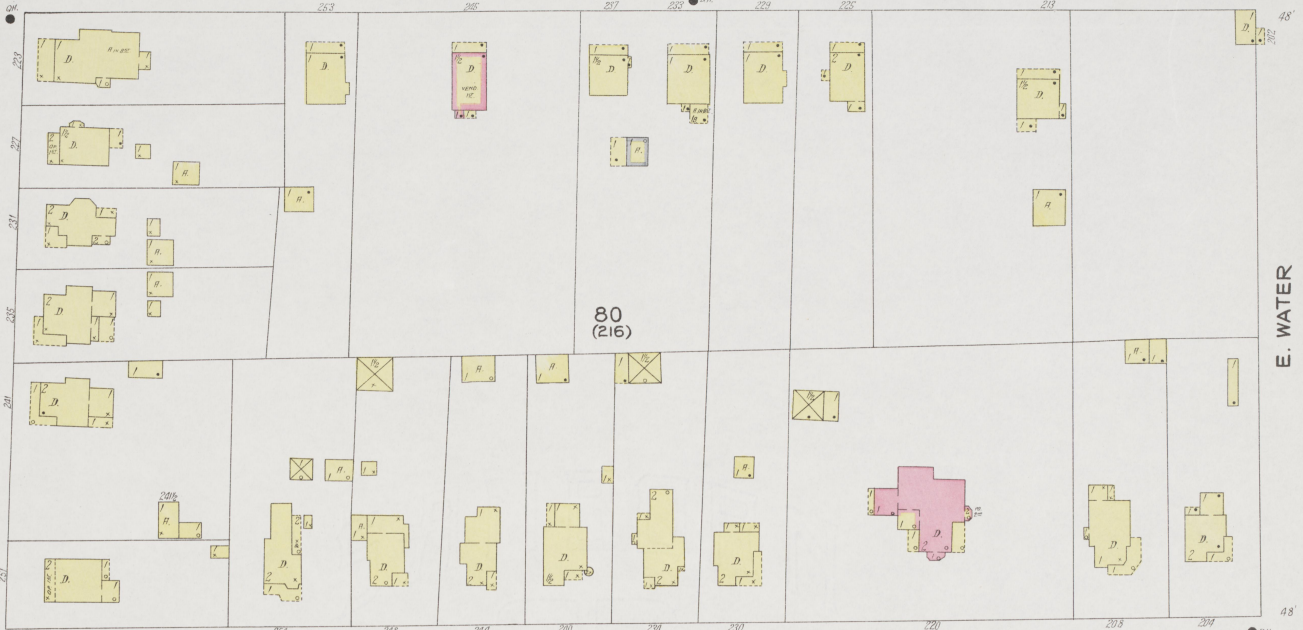
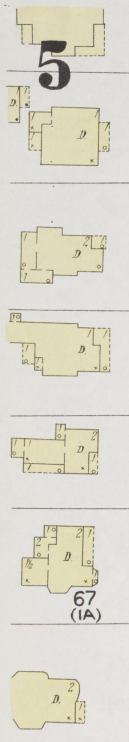
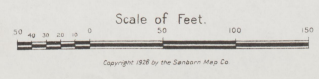
S. COLLINS

SMITH-BALLARD

80  
(216)

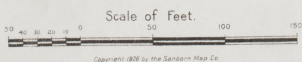
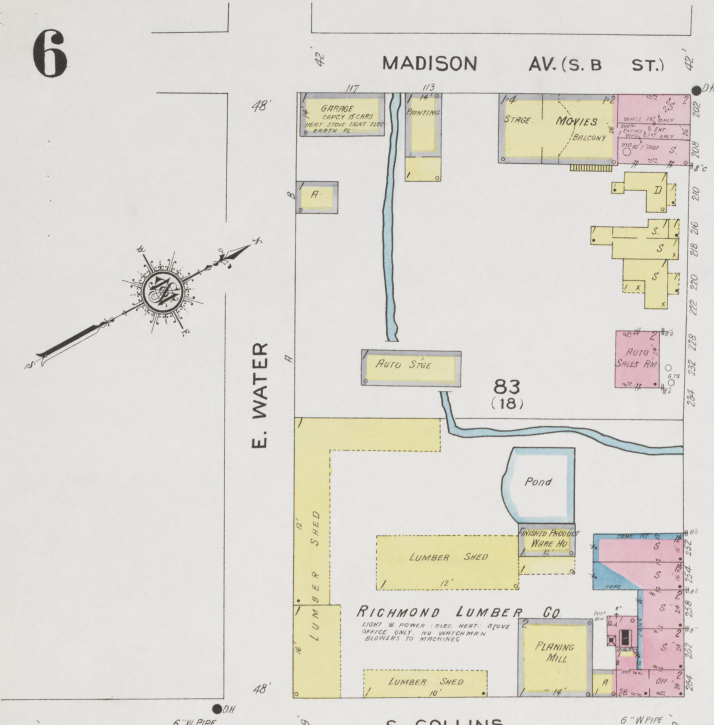
81  
(18 1/2)

82  
(19)

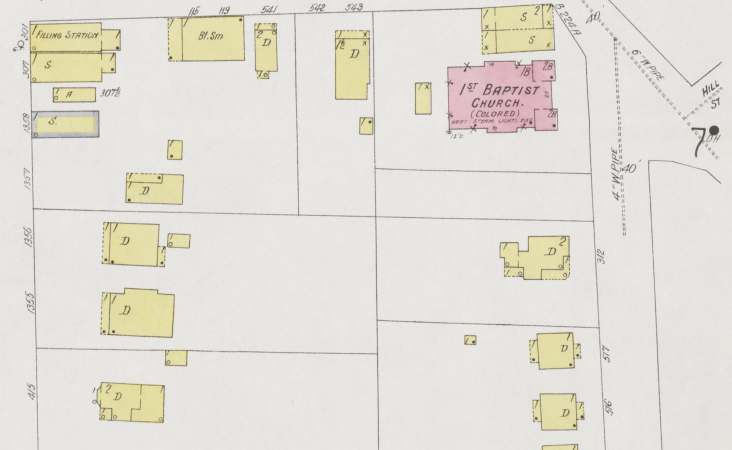
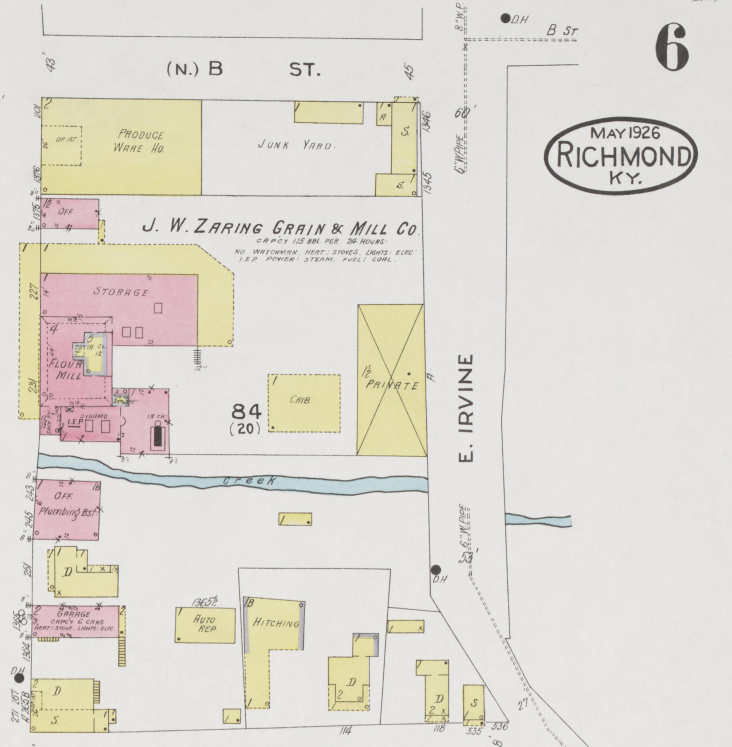




MAY 1926  
RICHMOND  
KY.



Copyright 1926 by the Sanborn Map Co.



EAST 17



MAY 1926  
RICHMOND  
KY.



E. IRVINE

(N.) B ST. 3

3

7

N COLLINS ST.

6

FRANCIS

87 (22)

ORANGE

89 (22)

E. IRVINE

88 (21)

HILL

85 (21)

EAST ST.

EAST 17

18

ELM

FOUR MILE AV. (RD.)

97 (217)

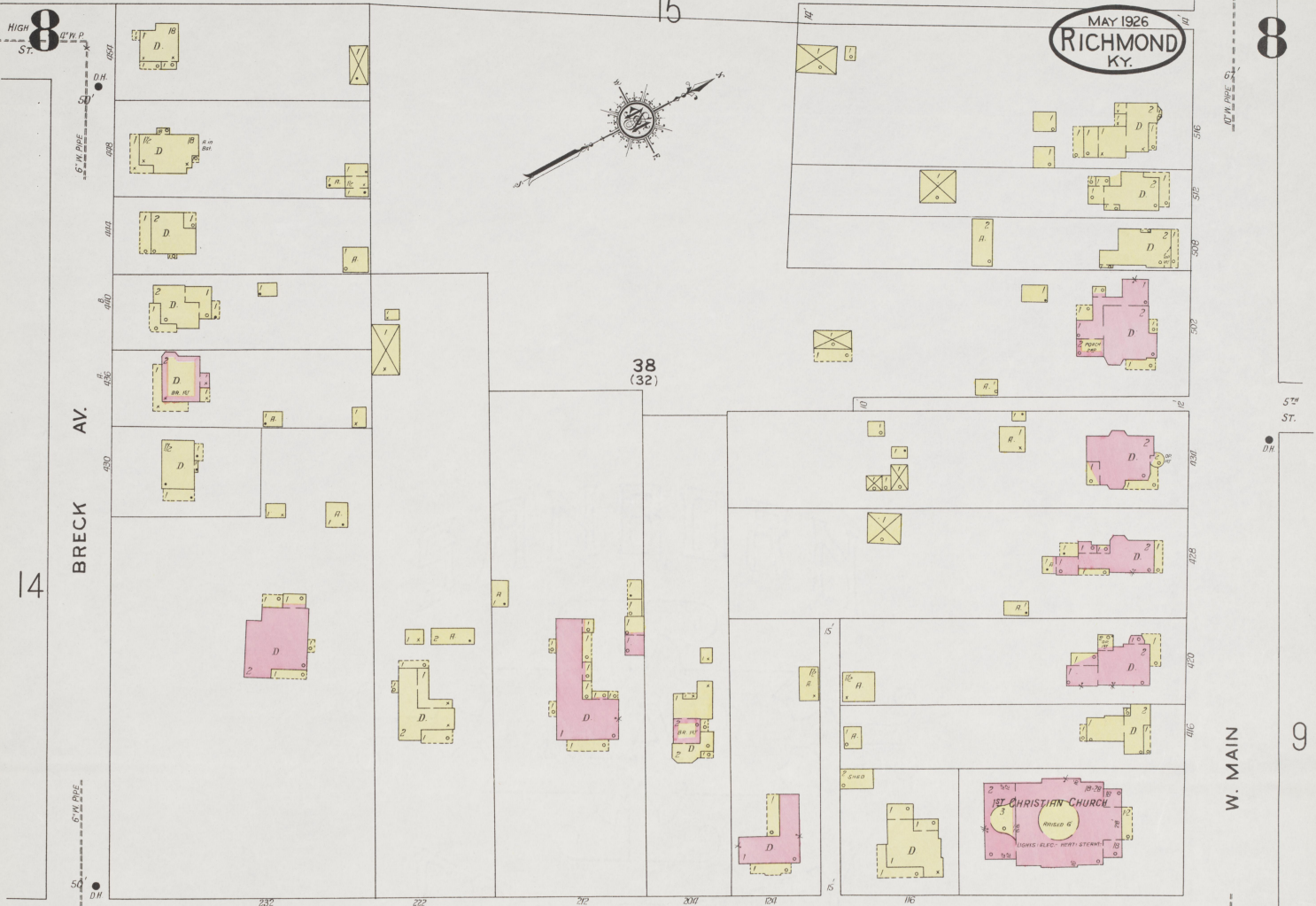
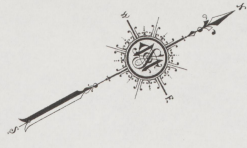
E. IRVINE

Scale of Feet. 0 50 100 150

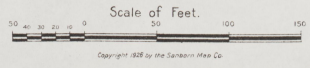
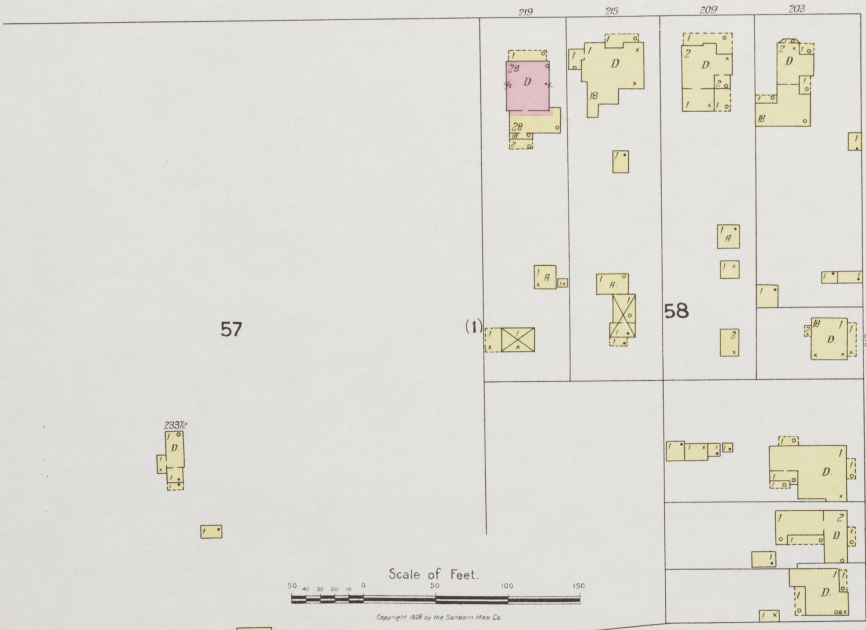
Copyright 1926 by the Sanborn Map Co.



MAY 1926  
RICHMOND  
KY.



LANCASTER AV.



Copyright 1926 by the Sanborn Map Co.



W. WATER

W. WATER ST.

2

N 35° ST.







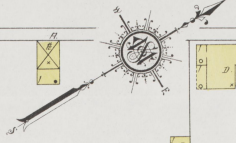
10

16

LAUREL

10

MAY 1926  
RICHMOND  
KY.



46  
(208)

47  
(213)

LYNDALE

5TH ST.

NORTH

4TH ST.

50  
(209)

52  
(103)

53  
(210)

PATTIE A. CLAY  
INFIRMARY

GLYNDON AV.

WOODLAND AV.

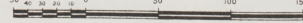
W. MOBERLY AV.

12

N. 3RD ST.

3

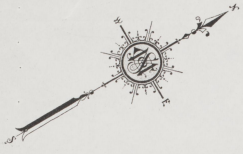
Scale of Feet.



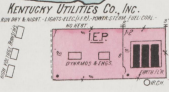
Copyright, 1926 by the Sanborn Map Co.



MAY 1926  
RICHMOND  
KY.



Cooling Pond



45  
(204)

AMERICAN TOBACCO CO.  
PRIZING RM.

LAUREL

48  
(214)

131  
(214)

49

ST.

HOME TOBACCO WARE HO. CO.  
TOBACCO PRIZING

55

54  
(212)

WALNUT

ST.

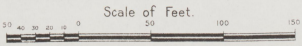
12

N. 3RD ST.

W. MOBERLY AV.

10

12



Copyright 1926 by the Sanborn Map Co.





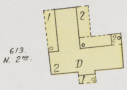
Scale of Feet.  
0 50 100 150  
Copyright 1926 by the Sanborn Map Co.



13

MAY 1926  
RICHMOND  
KY.

13



78  
(215)

93  
(21½)

WALNUT

77  
(202)

12

N. 2ND  
ST.

ST. (N) B

BROADWAY

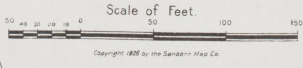
76  
(201)

90  
(21)

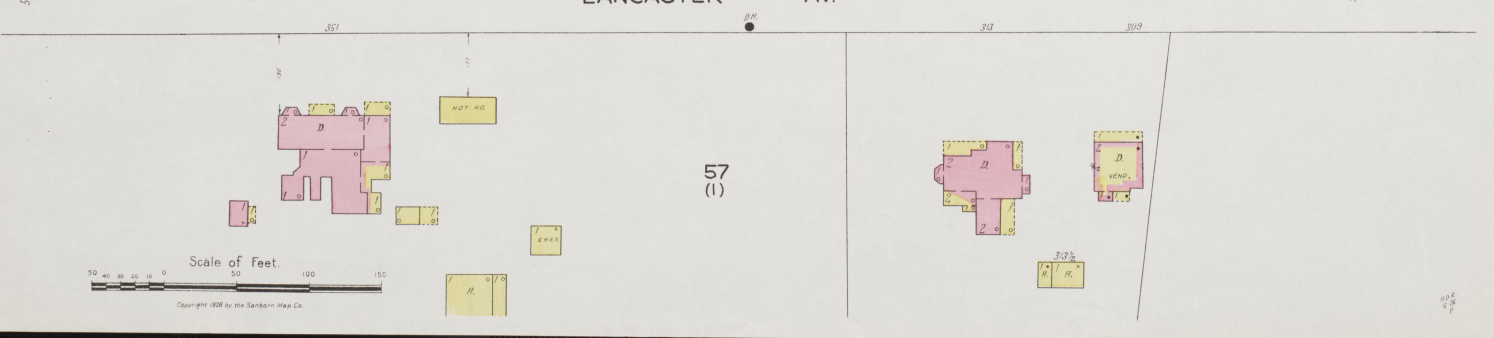
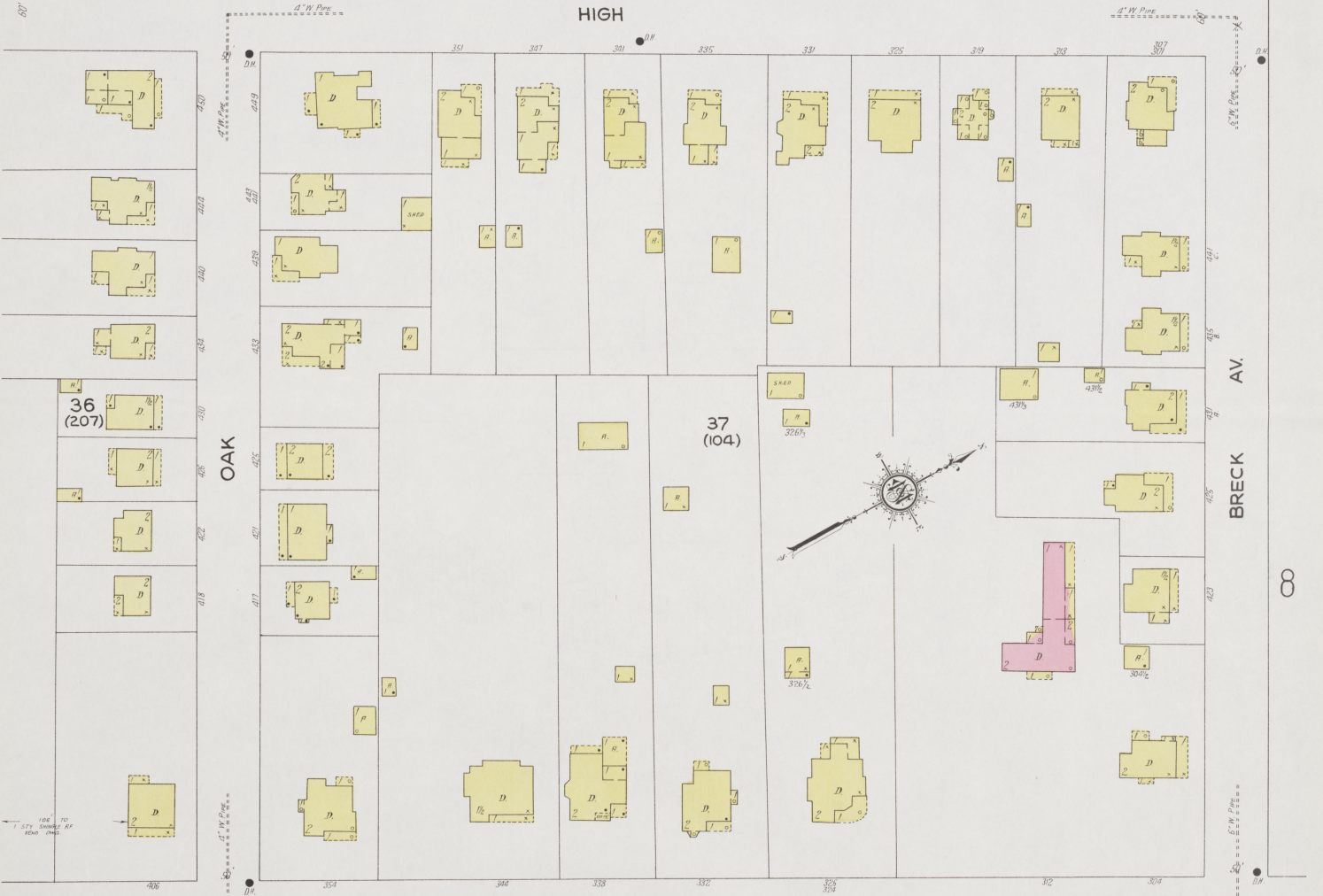
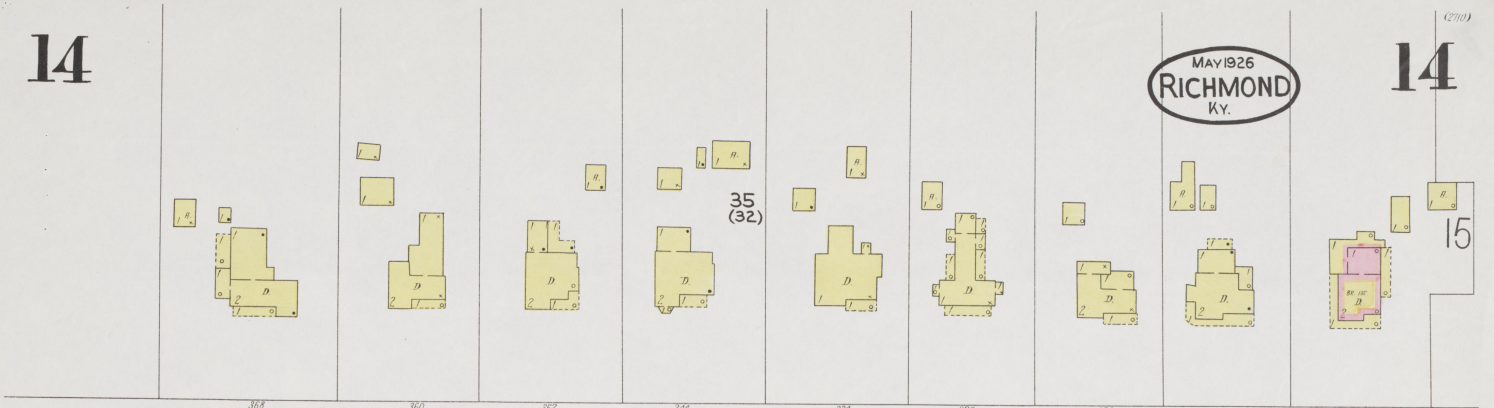
W. MOBERLY AV.

E. MOBERLY AV.

3



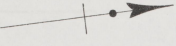






15

SCALE 100 FT. TO AN INCH.



SILVER CREEK

Located 10 Miles S.W. of Richmond Court Ho.

FORMER SITE OF  
UNITED AMERICAN COS WARWICK DISTILLERY  
& THE KENTUCKY DISTILLERIES & WARE HO  
COS SILVER CREEK DISTILLERY.

NO FIRE APPROVED

L & N R.R.  
SILVER CREEK  
Freight & Passenger DEPOT

W.D. BURKE  
TOBACCO  
HANGING



(2710)

15

MAY 1926  
RICHMOND  
KY.

22

TATES CREEK AV.

34  
(206)

PARRISH AV.

DRUCE

W. MAIN

16

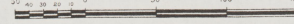
35  
(32)

ST MARKS R.C. CHURCH

14

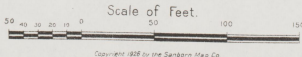
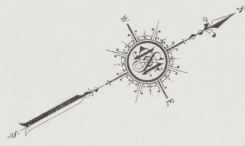
8

Scale of feet.



Copyright, 1926 by the Sanborn Map Co.



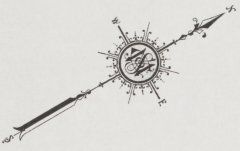


Copyright 1926 by the Sanborn Map Co.



17

17

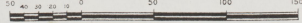


MAY 1926  
RICHMOND  
KY.

C E M E T E R Y  
82



Scale of Feet.



Copyright 1926 by the Sanborn Map Co.



ORANGE ST. 18

7

FOUR MILE AV. (RD. 18) 18

MAY 1926  
RICHMOND  
KY.



98  
(218)

97  
(217)

101  
(218)

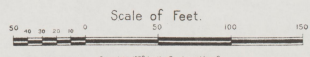
100  
(25)

133

122

21

N. ESTILL AV.



Copyright 1926 by the Salsman Map Co.



19

17

21

19

21

S. FAIRVIEW

MAY 1926  
RICHMOND  
KY.



106  
(223)

EAST END STOCK  
BARN  
STOCK YARDS  
CATTLE PENS

E. MAIN  
SHORT ST  
STORAGE  
AUTO REPAIR  
LIVE

S. ESTILL  
AV. (LETCHER ST. & S. W. AV.)

103  
(31)

RACE

BIG HILL  
AV.

105  
(224)

20

MULE BARN

ALTAMONT (HEATH)

ALTAMONT

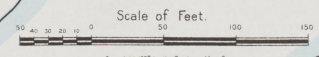
RICHMOND ICE CO.  
CAP. 10 TONS PER HOUR  
LIGHTS, ELEC.  
HEAT, STEAM  
PUMP, COAL

102  
(225)

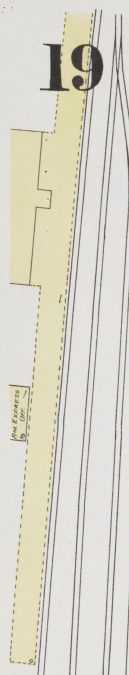
POND

104

W. FAIRVIEW  
CHURCH  
DRIFT ST.  
CHURCH  
MEAT MARKET  
TANNERY



Copyright 1926 by the Sanborn Map Co.



ENGINE HO.

30

35

50'

50'

50'

50'

60'

60'

60'

60'

60'

60'

60'

60'

60'

60'

60'

60'

60'

60'

60'

60'

60'

60'

60'

60'

60'

60'

60'

60'

60'

60'

60'

60'

60'

60'

60'

60'

60'

60'

60'

60'

60'

60'

60'

60'

60'

60'

60'

60'

60'

60'

60'

60'

60'

60'

60'

60'

60'

60'

60'

60'

60'

60'

60'

60'

60'

60'

60'

60'

60'

60'

60'

60'

60'

60'

60'

60'

60'

60'

60'

60'

60'

60'

60'

60'

60'

60'

60'

60'

60'

60'

60'

60'

60'

60'

60'

60'

60'

60'

60'

60'

60'

60'

60'

60'

60'

60'

60'

60'

60'

60'

60'

60'

60'

60'

60'

60'

60'

60'

60'

60'

60'

60'

60'

60'

60'

60'

60'

60'

60'

60'

60'

60'

60'

60'

60'

60'

60'

60'

60'

60'

60'

60'

60'

60'

60'

60'

60'

60'

60'

60'

60'

60'

60'

60'

60'

60'

60'

60'

60'

60'

60'

60'

60'

60'

60'

60'

60'

60'

60'

60'

60'

60'

60'

60'

60'

60'

60'

60'

60'

60'

60'

60'

60'

60'

60'

60'

60'

60'

60'

60'

60'

60'

60'

60'

60'

60'

60'

60'

60'

60'

60'

60'

60'

60'

60'

60'

60'

60'

60'

60'

60'

60'

60'

60'

60'

60'

60'

60'

60'

60'

60'

60'

60'

60'

60'

60'

60'

60'

60'

60'

60'

60'

60'

60'

60'

60'

60'

60'

60'

60'

60'

60'

60'

60'

60'

60'

60'

60'

60'

60'

60'

60'

60'

60'

60'

60'

60'

60'

60'

60'

60'

60'

60'

60'

60'

60'

60'

60'

60'

60'

60'

60'

60'

60'

60'

60'

60'

60'

60'

60'

60'

60'

60'

60'

60'

60'

60'

60'

60'

60'

60'

60'

60'

60'

60'

60'

60'

60'

60'

60'

60'

60'

60'

60'

60'

60'

60'</



MAY 1926  
RICHMOND  
KY.

S. FAIRVIEW

S. MAPLE

RACE

ALTAMONT

STEEP

BIG HILL  
AV.

19

107

108

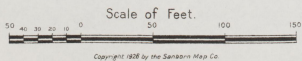
105  
(224)

110

104

102

WILL LUXON  
TOBACCO REHANDLING  
& PRIZING





21

90

WALNUT ST. 3

93 (21 1/2)

122

RICHMOND WATER & LIGHT CO.  
GAS PLANT

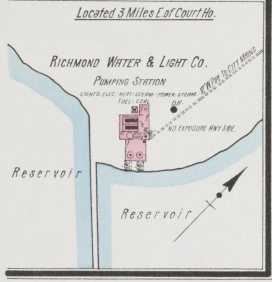
Gas Plant  
LIGHTS, GAS, WATER, SEWER, POWER SYSTEM  
FUEL OIL  
NO EXPOSURE ANY SIDE

Located 3 Miles E. of Court Ho.

RICHMOND WATER & LIGHT CO.  
PUMPING STATION

Reservoir

Reservoir



MAY 1926  
RICHMOND  
KY.

21

(270)

129

127

128

NO EXPOSURE ANY SIDE

126

121

120

119 (222)

118

117

116

115

114

113

112 (-28)

111

108

107

106

105

104

103

102

101

100

99

98

97

96

95

94

93

92

91

90

89

88

87

86

85

84

83

82

81

80

79

78

77

76

75

74

73

72

71

70

69

68

67

66

65

64

63

62

61

60

59

58

57

56

55

54

53

52

51

50

49

48

47

46

45

44

43

42

41

40

39

38

37

36

35

34

33

32

31

30

29

28

27

26

25

24

23

22

21

20

19

18

17

16

15

14

13

12

11

10

9

8

7

6

5

4

3

2

1

0

100

200

300

Scale 100 Ft. to One Inch.

Copyright 1926 by the Sanborn Map Co.

TOBACCO BARN  
W. W. CRUTCHER

STOCK PEN

STOCK PEN

STOCK PEN

STOCK PEN

MADISON STOCK YARDS

123

18

N. ESTILL AV.

E. IRVINE

LINDEN AV.

N. FAIRVIEW

OAK AV.

17

RICHMOND HIGH SCHOOL  
(COLLEGE)

LOUISIANA STATE COLLEGE & DIVISION

E. MAIN

19

S. FAIRVIEW

S. MAPLE

SPRING

20

111

Scale 100 Ft. to One Inch.

Copyright 1926 by the Sanborn Map Co.



22

22

MAY 1926  
RICHMOND  
KY.



Scale 100 Ft to One Inch.  
0 100 300  
Copyright 1926 by the Sanborn Map Co.