

MAY - 1923

GLASGOW

BARREN COUNTY KENTUCKY

Sanborn Map Company
of NEW YORK

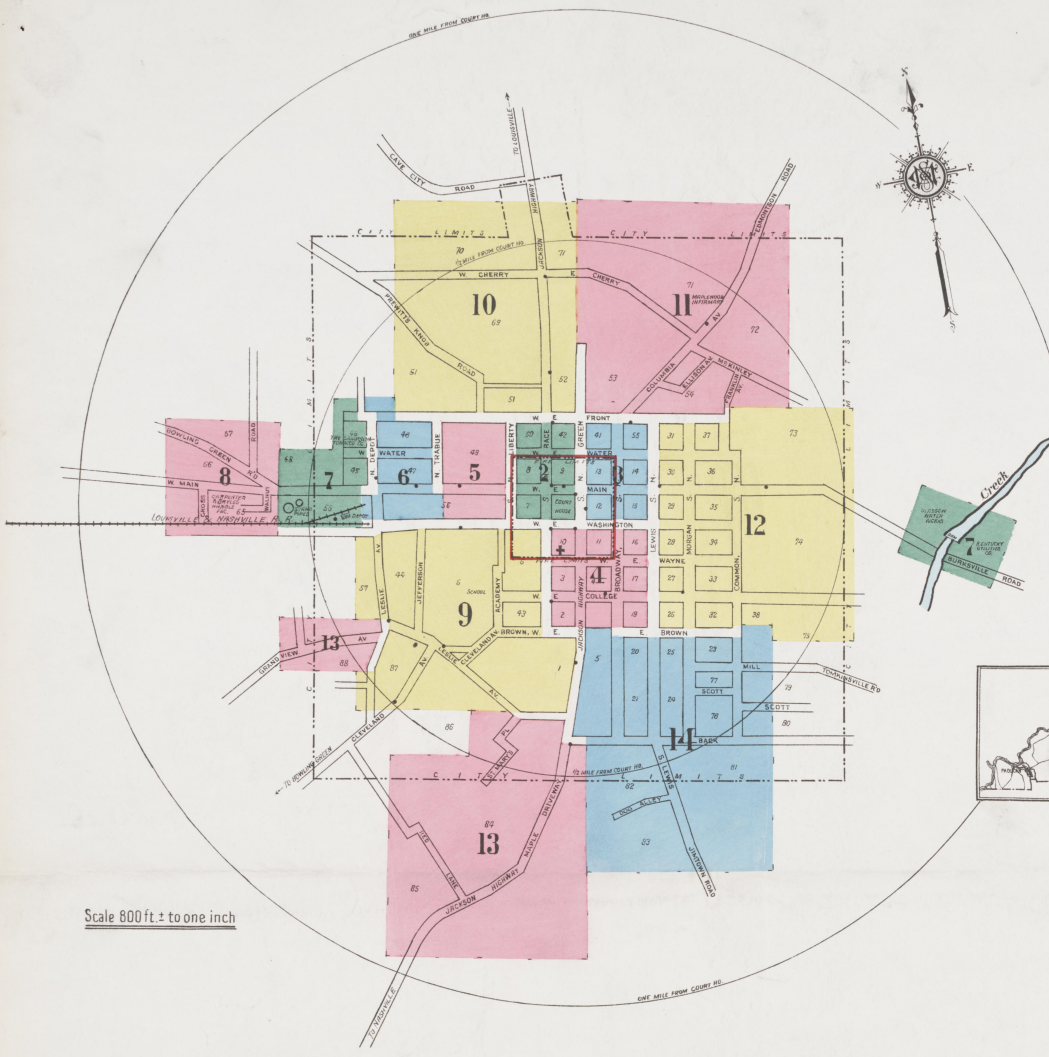
MARCH 1923

Copyright 1923 by the Sanborn Map Co.
Great care is exercised in the production of our publications and in our service but absolute accuracy is not guaranteed.

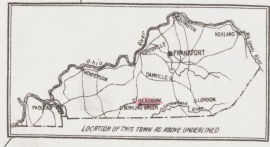
Population 5000. Prevailing Winds, S.W.

WATER FACILITIES: Water works owned and operated by the Glasgow Water Co. System installed above 1887. Gravity and direct pressure. Water supply from creek which is subject to occasional drought during very dry seasons. One 100-hp. electric centrifugal pump, cap. 300 gals. per min. located in Kentucky Utilities Co. Electric Plant (Sheet N 7) which is to be removed to the pumping station. One new Mahanoe electric centrifugal pump, cap. 400 gals. per min. to be installed. Water pumped into two stand pipes, cap. 300,000 gals. and 171,000 gals. about 10 miles of water pipes, 47 in. dia. 17 double hydrants. Domestic pressure 40 lbs. Fire pressure 100 lbs.

FIRE DEPARTMENT: Volunteers: one chief and 10 men. One man sleeps at fire station nights. One American-La France combination hose and chemical auto truck fully equipped with 40 gal. chemical tank, 200 ft. chemical hose and 100 ft. 2 1/2" gal. rubber lined hose. Two hose carts. Two 50 ft. extension ladders. 5 3-gal. chemical extinguishers. Total hose on hand 5000 ft. 2 1/2". Fire alarm by bell and electric siren.



Scale 800 ft. ± to one inch



KEY

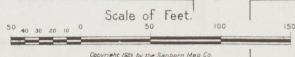
- WATER MAIN
- SEWER MAIN
- STREET LIGHTS
- OPENING WITH IRON DOOR
- WINDOWS & SHUTTERS
- WINDOWS 1ST STORY
- WINDOWS 2ND & 3RD STORIES
- STABLE (CB) - CONCRETE BLOCK
- BUILDING CONSTRUCTION
- BRICK
- WOOD
- BLUES
- BEAUFORT
- BROWN FIRE PROOF
- RELATIVE HEIGHTS
- FIRE STATION
- ALTIMETER STREET NUMBERS ARE ACTUAL
- CONSECUTIVE STREET NUM ARE ARBITRARY

INDEX

STREETS		SHEET		SHEET		SHEET	
Academy	A	Front, E.	101-309	*11 Main, W.	300-435	Wayne, E.	4 & 12
Back	B	" W.	208-308	" Extended	400-416	" W.	4
Bowling Green Road	B	" S. S.	1-29	*10 Maple Driveway	405-425	Hammer Hotel	H
Broadway, N.	B	" W. of N. Trabue	100-126	" " "	418-424	Harvey, J. B., & Son, Lumber Yard	6
" "	B	" W. of N. Depot	2-30	" " "	426-551	Hopewell Baptist Church (Colored)	14
" "	B	" "	100-403	6 Mill	14	Hotel Liberty	2
Brown, E.	B	Grand View Ave.	1-111	7 Morgan, N.	12 & 14	Jacksonway Hotel	J
" "	B	Green, N.	2-110	" S.	12 & 14	Kentucky Utilities Co., Elect. Light & Ice Pl't	7
" "	B	" "	200-220	New, see N. Trabue		L. & N. R. R. Depots, Round House, &c.	7
" "	B	" "	201-221	Prewitt's Knob Road	10	Maplewood Infirmary	M
" W.	B	" "	1-29	" "	10	Methodist Episcopal Church	4
Burksville Road	B	" "	2-30	Race, N.	1-110	Mission Church	6
Cherry, E.	C	" "	100-403	" S.	200-317	Old Planing Mill Co.	O
" W.	C	Jefferson	9	" "	1-32	Planters' Loose Tobacco Warehouse Co.	P
Cleveland	C	Jimtown Road	14	St. Mary's Place	13	Presbyterian Church	9
College, E.	C	" "	14	Scott	14	Rainbow Inn	R
" W.	C	" "	14	St. "	14	Reynold, U. T., Tobacco Co.	5
Columbia Ave.	C	Leslie Ave.	6, 9 & 13	Trabue, N.	5 & 6	First Baptist Church (Colored)	14
Common, N.	C	Lewis, N.	3 & 12	Walnut	8	" Christian Church	4
Cross, S.	C	" "	1-309	Washington, E.	1-25	Foster House, Boarding	7
Depot, N.	D	" "	2-26	" "	2-208	Samson Tobacco Co., Twist Tobacco Mfg'g	7
Dog Alley	D	" "	2-26	" W.	101-211	Standard Oil Co.	9
Edmonton Road	E	" "	1-115	" "	300-409	Telephone Exchange	T
Elk Road (arbitrary)	E	Liberty, N.	2-115	" "	1-15	Warder, E., Tobacco Pring Barn	5
Ellison Ave.	E	" S.	2-90	Water, E.	7	" Tobacco Factory	5
Franklin Ave.	F	McKinley	11	" "	1-26		
Front, E.	F	Main, E.	1-26	" "	100-211		
" "	F	" "	100-211	" "	123-225		
" "	F	" Extended	300-525	" "	2-224		
" "	F	" "	100-211	" "	101-121		
" "	F	" "	100-125	" "	123-225		
" "	F	" "	200-225	" "	1-26		
		" "		" "	100-211		
		" "		" "	300-411		
		" "		" W.	2, 6 & 7		

* Indicates only one side of Street shown.

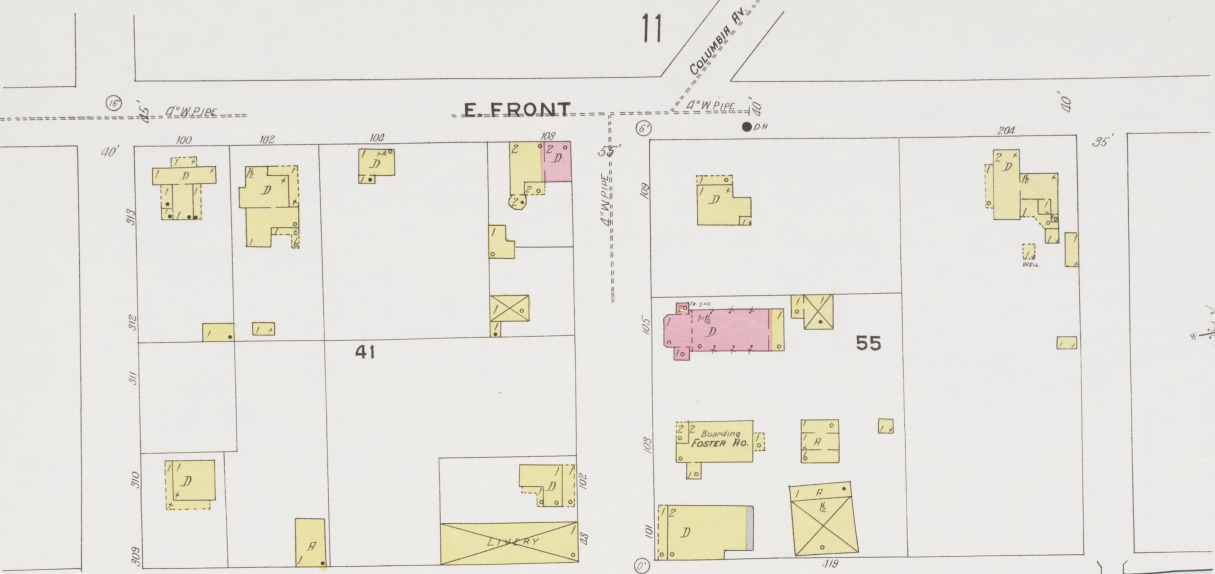
MAR 1923
GLASGOW
KY.



Copyright 1923 by the Sanborn Map Co.

11

E. FRONT



E. WATER

N. GREEN

N. BROADWAY

N. LEWIS

2

13

14

12

E. MAIN

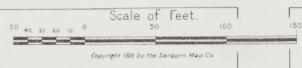
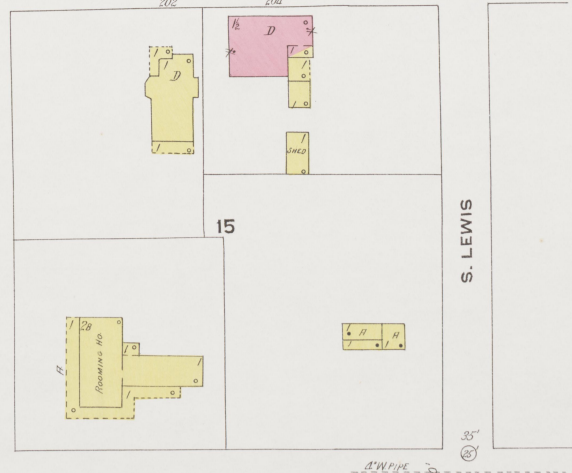
S. GREEN

S. BROADWAY

S. LEWIS

4

E. WASHINGTON





MAR. 1923
GLASGOW
KY.

4

E. WASHINGTON

W. WAYNE

E. WAYNE

S. LEWIS

E. COLLEGE

E. BROWN

E. BROWN

Scale of Feet.
0 20 40 60 80 100 120 140 160
Copyright 1922 by the Sanborn Map Co.

10

NET CHRISTIAN CHURCH
HEAT PLUMB
LIGHTS ELEC.

PRINTING
LEC. REPAIRS

CHAMBER OF COMMERCE

GARAGE
CAPCY 25 CARS
HEAT STOVE, LIGHTS ELEC.

LIVERY

Auto Repair and
BUILDING MATERIAL

GRAPE MILLING
STATION

11

Bank

MESONIC TEMPLE

Haroon

WINE SH.

AUTO WARE HO.

LIVERY

16

Presb. Church
HEAT PLUMB
LIGHTS ELEC.

COUNTY
CLERK'S OFFICE

3

GARAGE
CAPCY 30 CARS
HEAT STOVE, LIGHTS ELEC.
3-28 GAL. EXT'ORS
CONC. FL.

RAINBOW INN

4

GARAGE
CAPCY 30 CARS
HEAT STOVE
LIGHT ELEC.
6-27 GAL. EXT'ORS
& FIREBOX

M.E. CHURCH
HEAT STOVE
LIGHT ELEC.

17

ME CHURCH
HEAT STOVE
LIGHT ELEC.

2

BAPTIST CHURCH
HEAT PLUMB
LIGHTS ELEC.

CATHOLIC CHURCH
HEAT STOVE
LIGHTS ELEC.

5

M.E. CHURCH
HEAT PLUMB
LIGHTS ELEC.

19

GARAGE
CAPCY 25 CARS
HEAT STOVE, LIGHTS ELEC.

9

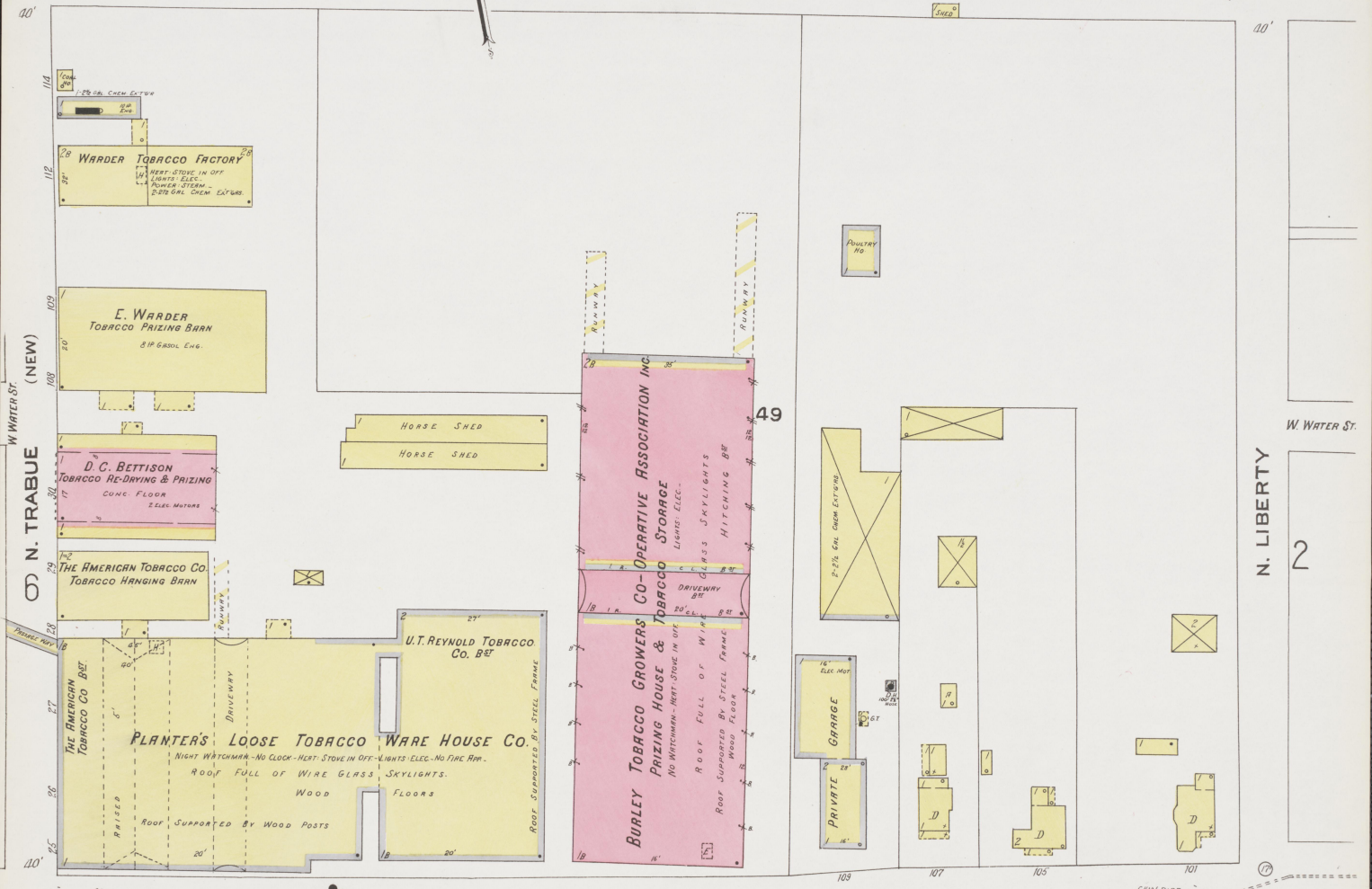
14

MAR. 1923
GLASGOW
KY.

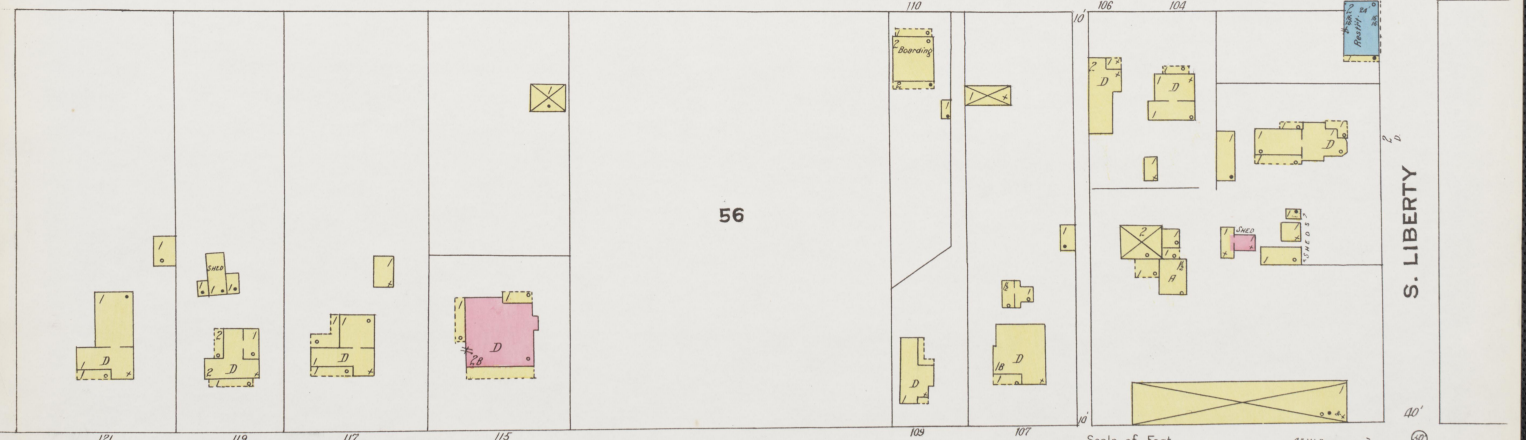
PREWITT'S Knob Rd.

10

W. FRONT



W. MAIN



W. WASHINGTON

9

Scale of Feet. 0 50 100 150
6" W PIPE

Copyright 1923 by the Glasgow Map Co.

ACADEMY ST.

W. WATER ST.

N. TRABUE (NEW)

W. WATER ST.

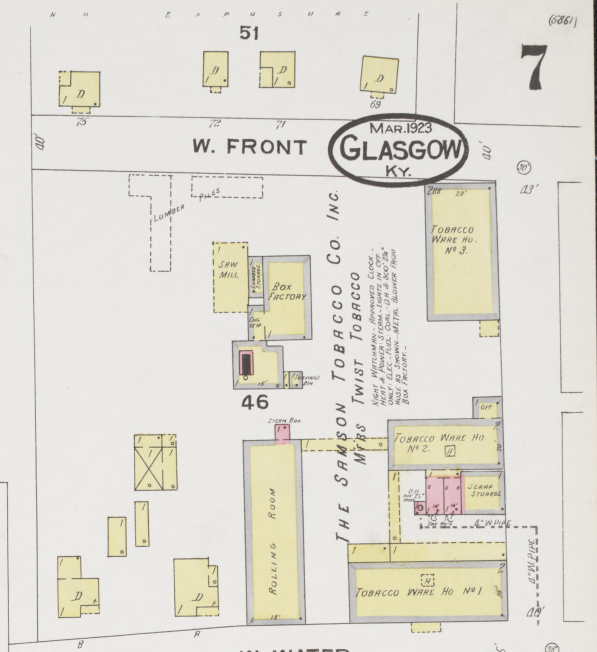
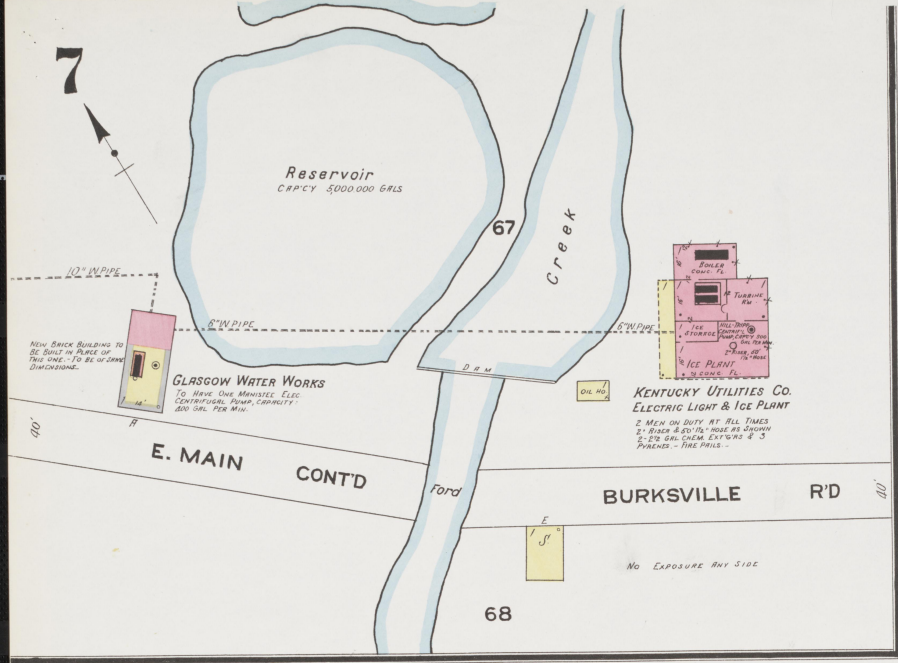
N. LIBERTY

W. WATER ST.

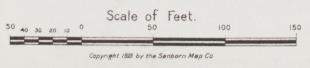
S. LIBERTY

W. WATER ST.





SCATTERED LOG PILES



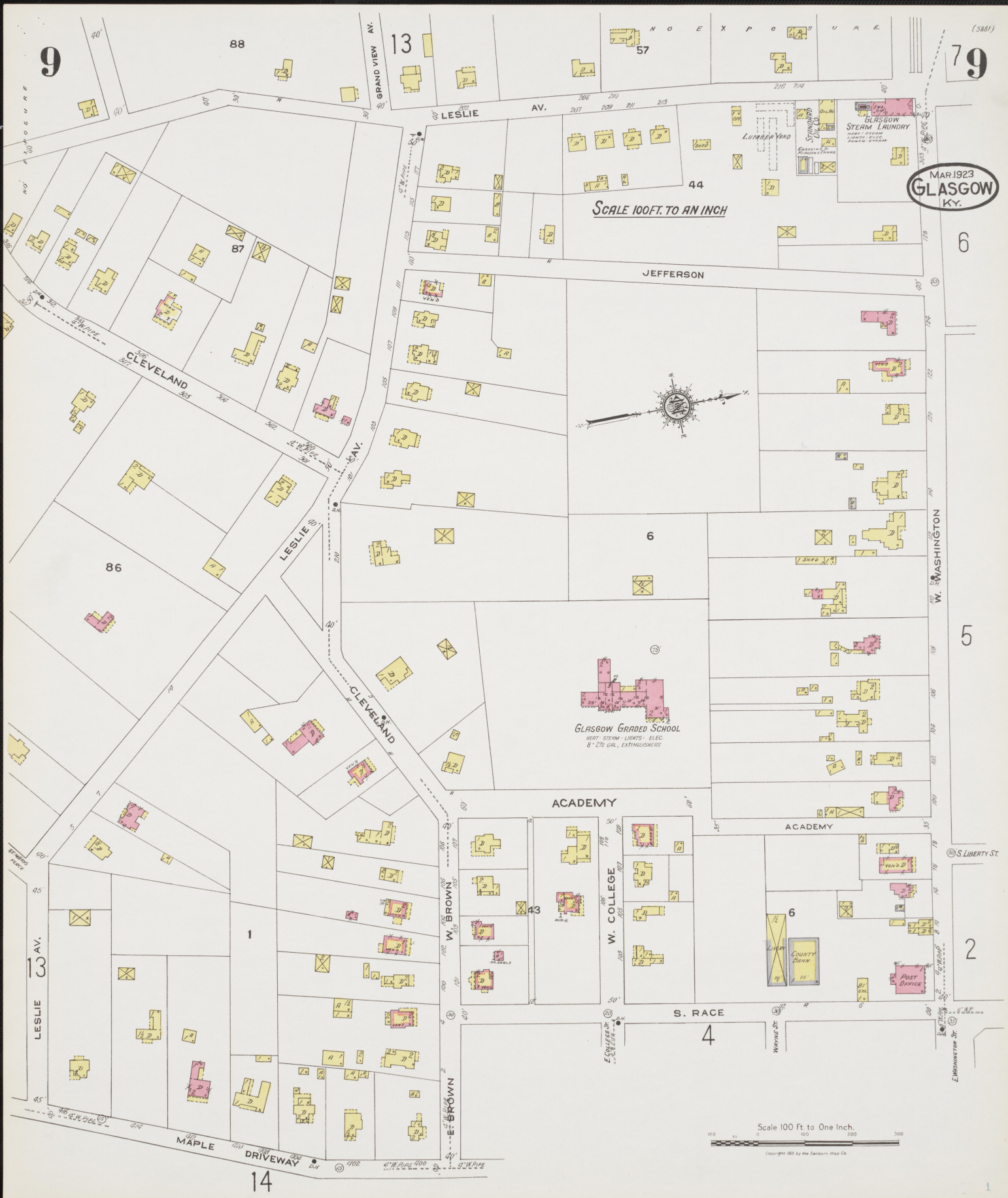
NO EXPOSURE

MAR 1923
GLASGOW
KY.

SCALE 100 FT. TO AN INCH



Scale 100 Ft. to One Inch.
Copyright 1923 by the Sanborn Map Co.



79

6

5

2

14



SCALE 100 FT. TO AN INCH



Scale 100 Ft. to One Inch.
Copyright 1923 by the Sanborn Map Co.

MAR. 1923
GLASGOW
KY.

SCALE 100 FT. TO AN INCH

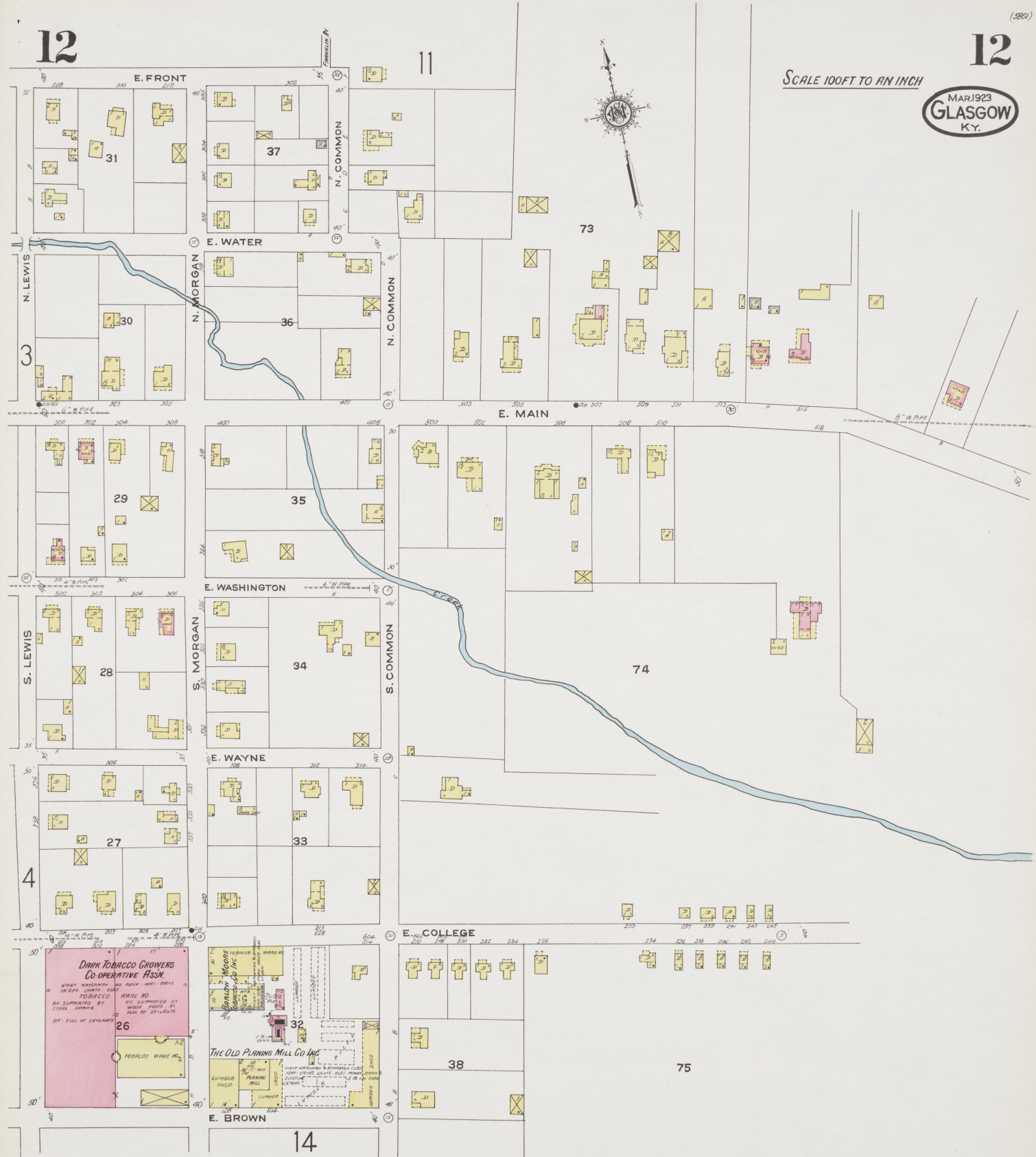


Scale 100 Ft. to One Inch.

Copyright 1923 by the Seaborn Map Co.

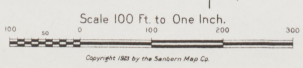
SCALE 100FT TO AN INCH

MAR 1923
GLASGOW
KY.



DARK TOBACCO GROWERS CO-OPERATIVE ASSN.
 DARK TOBACCO, 100 BUSH - 1000 BUSH
 IN ONE LOT, 1/2 AC
 TOBACCO WARE HO
 AS SHOWN BY
 STEEL PIPES BY
 RT. FULL OF CEMENTS

THE OLD PLANING MILL CO INC
 WARE HO
 PLANING MILL
 LUMBER SHED
 LUMBER



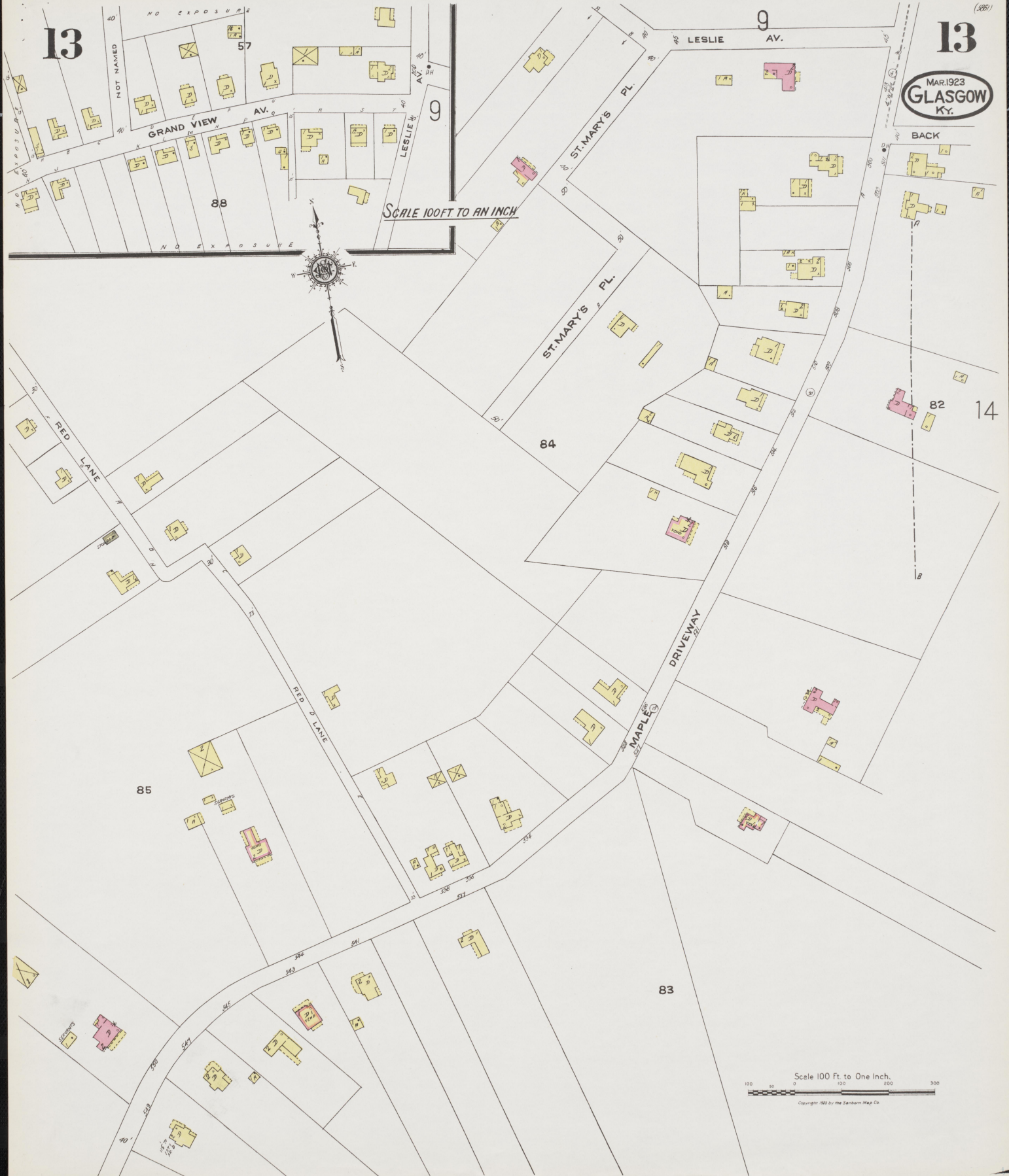
Scale 100 Ft to One Inch.

Copyright 1923 by the Sanborn Map Co.

13

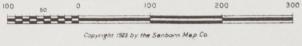
13

MAR 1923
GLASGOW
KY.



SCALE 100 FT TO AN INCH

Scale 100 Ft to One Inch.



Copyright 1923 by the Sanborn Map Co.

14

MAR 1923
GLASGOW
KY.

14

(5361)

SCALE 100 FT TO AN INCH

Scale 100 Ft to One Inch.
Copyright 1923 by the Sanborn Map Co.

