

Kentucky Kernel

Vol. XCIII, No. 141

Established 1894

University of Kentucky, Lexington, Kentucky

Independent since 1971

Wednesday, April 4, 1990

UK tuition hike approved by BOT

By TOM SPALDING
Executive Editor

Most UK students will have to pay \$75 more for tuition and fees next academic year. The increase is partly the result of rising costs of student health-care service.

Tuition for full-time, in-state students will be \$854.75 per semester, a 9.6 percent increase over this year and almost 40 percent more than what students paid in 1985-86.

The UK Board of Trustees approved the new rate yesterday. Tuition is set by the Kentucky Council on Higher Education, which determines rates at the state's eight universities and 14 community colleges.

Tuition was set at \$750 per se-

Full-time, in-state undergraduates to pay \$854.75 per semester in 1990-91

semester, a \$60 increase from this year.

Tuition for out-of-state students will increase from \$2,070 to \$2,250 per semester.

In-state graduate students will pay \$830 per semester, a \$70 increase, and non-resident graduate students will pay \$2,490, a \$210 increase.

Tuition also will increase next year for students in the colleges of Law, Pharmacy, Medicine and Dentistry.

Lexington Community College students will pay the same tuition and fees as students on the Lexington Campus. Tuition at other community colleges will be \$320 per semester for residents, up \$20, and \$960 for non-residents, a \$60 increase.

A mandatory registration fee for students was increased \$15 per semester to \$104.75. The fee covers athletics, student health, student activities, student government and other student services.

The increase was approved by the Student Government Association Senate and the Student Health Advisory Committee.

"A lot of students wonder why, but we saw the reasoning and the numbers," said SGA President Sean Lohman, the student trustee.

Many existing programs, such as gynecology services and psychiatric health, probably would have been discontinued without the fee increase, Lohman said.

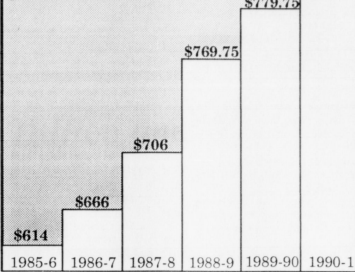
Although some students may not use the Student Health Service, the program serves as "insurance" for most students, Lohman said.

"It's a lot like the fire department," Lohman said. "A lot of

See UK, Back page

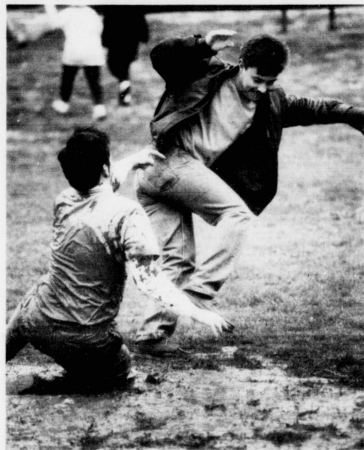
Tuition and Fees

Full-time, in-state students, per semester



KARYN GATZ/Kentucky Staff

CHARIOTS OF MUD



Russ Hoskins (left), a member of Phi Kappa Psi social fraternity, looks for help after getting thrown into the mud by friends.



STEVE SANDERS/Kentucky Staff

Greeks turn Roman for fun-filled event

By MICHAEL L. JONES
Editorial Editor

In ancient Rome chariots were usually one of those luxuries reserved for only Roman noblemen or politicians. Well, Arts and Science sophomore Mary French may not be a member of the Roman Senate or a patrician noble, but that doesn't mean that she can't drive a chariot, too.

In fact, over 500 fraternity and sorority members watched as French, a member of Kappa Alpha Theta sorority, and representatives from other greek chapters competed in Phi Kappa Psi's Chariot Races, one of the events in the 1990 Greek Activities Steering Committee's Greek Week.

"It was a bumpy ride," French said of the race. "But I loved the helmet."

French may not be Julius Caesar, but she didn't have to worry about horses with sorority sisters Becky Hankins and Jennie Rourke pulling her chariot. Hankins and Rourke prefer to be called pullers, not steeds, because for a little over two minutes that's all they did. Starting with the other contestants at the line, they pulled French along a stretch of grass, through a

mud patch (provided by the Lexington-Fayette County fire department) and finally zig-zagged around a line of cones.

The race is split up into four categories:

- Guys pulling a girl, won by Sigma Nu and Zeta Tau Alpha.

- Girls pulling a guy, won by Phi Kappa Psi and Kappa Kappa Gamma.

- Girls pulling a girl, won by Kappa Kappa Gamma.

- Guys pulling a guy, won by Sigma Nu.

Each chapter that participated also got points for overall competition based on how well they did in each race. First place winners got seven points, second received five, three for third and one point for fourth. Kappa Kappa Gamma won the top honor among the sororities and Sigma Nu took it among the fraternities in the chariot races.

While the contestants were battling the elements to increase their time, their counterparts were dealing with philosophical questions, such as what the Romans would think of chariot races held by a bunch of Greeks.

"We could be starting a war," said Alpha Gamma Delta's E.J.

WIPE OUT: Greek Week got off to a bumpy but successful start this week. Events included the Phi Kappa Psi Chariot Race, above, in Clifton Circle and will include a mattress marathon on Friday.

Bunzendahl. "This could be very dangerous."

Bunzendahl's sorority sister, Shannon Smiley, was voted Phi Kappa Psi's Ms. Olympia. Smiley said that she thought the Romans would be "flattered," but she didn't rule out the possibility of some resistance.

Smiley became Ms. Olympia not for her knowledge of the Romans, but for raising the most money for the GASC's scholarship fund. She said she raised about \$45 by simply going from

house to house asking for donations.

Along with the title Smiley got an engraved medallion. After accepting her award she promised that unless she is forced to relinquish her crown to the first runner-up due to some forgotten, but revealing photos, she will be back to "crown the new Ms. Olympia next year."

Greek Week is a 35-year-old annual event sponsored by the GASC.

"It's changed in various ways,"

Greek Week Chairman Ellen Duncan said. "We try to redo some events and make everything a little better. We wanted to make it more of a spirited week this year."

Duncan, a member of Alpha Omicron Pi sorority and Chairperson of Greek Week, said that UK has almost 100 years of greek life to celebrate.

"It's great," Duncan said. "Greek Week is a chance to get

See RACES, Back page

'Odyssey' racking up numerous awards

By GENE DOBSON
Contributing Writer

More than 15 awards have poured into the fourth floor of Kinkead Hall during the last few months. And Susan Hodgets has been there to proudly receive them. Hodgets is the editor of the *Odyssey*, a UK magazine that features stories on research and graduate education, which has received top awards from three organizations.

The magazine won overall and design awards from the Council for Advancement and Support of Education (CASE), a nationwide organization of 3,200 colleges, universities and other educational institutions. Also among the awards is an ADDY award from the American Advertising Federation for a poster that was pulled from a cover photo.

Odyssey has received several awards from the International Association of Business Communication, a local organization.

"With the (computer) technology available we realized we could publish a magazine twice a year, to replace the annual report, for about the same cost," said Hodgets, who proposed the plan eight years ago. Hodgets said the magazine gives faculty members more recognition for their research.

The magazine is sent to four local bookstores, all the faculty, the media, legislators and business and industry leaders as well as a few alumni. However, funding will not allow for larger distribution of *Odyssey*, so last year the "UK Science and You" column was started to subsidize the magazine.

The column, like the magazine, has been awarded top honors from CASE and the International Association for Business Communication. "UK science and You" grew out of the magazine and is sent to 70 newspapers, and to all seventh through 12th grade science teachers to use as a study guide.

"UK Science and You" focuses on stories concerning Kentucky which are featured in the magazine. Hodgets said almost 250,000 people read the column currently.

"It cost about \$52 a copy for the column to get to the newspapers," said Hodgets. Both the *Odyssey* and "UK science and You" are funded through special grants and contracts, according to Hodgets.

Sports

Brent got burnt, but so what? Column, Page 2.



Diversions

20th century art exhibit opens. Story, Page 3.

Weather

Today: Sunny, warmer. High upper 50s°

Tomorrow: Partly cloudy. High mid-50s°

SPORTS

Barry Reeves
Sports Editor

Hopefully forgotten

Musburger's ego led to his demise with CBS Sports

Just when he thought it was safe to wear his glasses on television, Brent Musburger was fired by the Columbia Broadcasting System.

Or more appropriately, the Cosmetic Broadcasting System. But that could be said of all television stations on both the news and sports sides.

Musburger's departure brings no great sorrow. In the studio, he was at his best.

Musburger made "The NFL Today" show more than just a half hour to get situated in the living room with potato chips and the beverage of your choice for Sunday afternoons of football, Football and more FOOTBALL.

But he tended to over-hype events, which is acceptable considering promotional work was part of his job.

Recently, his over-hyping of the NFL on "C-B-S" caused Musburger to be the victim of a series of "Saturday Night Live" skits. Every other word out of the Kevin Neeland's mouth was "C-B-S."

But Musburger had reason to over-hype "C-B-S." The network gave him everything he wanted. So much that his voice and face be-



Greg HALL

came too familiar.

When CBS won the bidding for the NCAA tournament, Billy Packer left NBC's trio of Dick Enberg, Al McGuire and himself for the network where he could get top billing.

Packer's seeking microphone time was no problem when Black Rock paired Packer with then lead play-by-play man Gary Bender.

Bender, an adequate play-by-play man, was not a challenge to the network's top analyst. Now Bender is at ABC working with that linguistic god Joe B. Hall — a much better basketball coach than analyst.

Could it be ironic that immediately after Bender left, Musburger moved to the No. 1 basketball play-by-play chair?

Brent would have done better to remain in the studio, doing interviews, giving scores and introducing segments.

Musburger has never been, nor ever will be, a great play-by-play man. When a game gets exciting, Musburger dominates the broadcast. Packer became second fiddle and the

analysis was Musburger's. Musburger obviously never studied the baseball broadcasts of Vin Scully.

The anchor of NBC's No. 1 baseball team and the voice of the Los Angeles Dodgers knows how to use television's advantages. Sports' most magnificent moments explain themselves. No commentary needed. At those points, Scully pauses, permitting the faces and sounds on the screen to show the emotion. And that is the only way which television can place the viewer in the arena.

Musburger never understood this. Monday night's NCAA championship broadcast was apically good for Musburger and Packer. The two fulfilled their roles as they should have done all along.

But then the game was not quite typical either. When the outcome was evident in the first minutes of the game, there was no reason for excitement.

When the game was over and the UNLV squad was celebrating, Musburger interjected more unnecessary babble.

Sadly, we will not hear Scully on TV this year as Major League Baseball is a CBS production now. And Musburger, a baseball fan, was gearing up for a job he was sure to

love.

In past years, Musburger did baseball play-by-play on CBS Radio broadcasts. Brent's enthusiasm also got in the way of the America's Pastime.

After last night's game, Musburger told the viewing audience that the championship was his last assignment for CBS and then said, "Folks, I've had the best seat in the house. Thanks for sharing it. I'll see you down the road."

And where will that road take Musburger? Probably not to another major network. Any decision Musburger makes probably will not occur until this fall.

Much speculation has been given to the possibility of Al Michaels' leaving ABC for the baseball network. If that happens, there are a few possibilities for Musburger to complete the trade.

Keith "Fummbillie" Jackson, the veteran voice of college "bar-burners on the plains of Auburn, Alabama," has seniority at ABC.

Executives could move Jackson to the "Monday Night Football" slot, but that is unlikely. It also is doubtful that the network would change the team of Jackson and Dick Vitale.

Rather than picking up a fat Brent Musburger salary, ABC could return Frank Gifford as play-by-play man on "Monday Night."

The most interesting possibility would place Musburger close to all of the sports he was able to cover at CBS.

The Entertainment and Sports Programming Network could offer Musburger a decent salary and make him the star of the cable channel's announcers. Brent could be ESPN's mouth of baseball, football, figure skating, golf ... and college basketball.

See CBS, Back page

Sutton interested in Oklahoma St.

Associated Press

STILLWATER, Okla. — The coach hired to lead Oklahoma State's basketball team next year will have a talented lineup waiting for him, athletic director Myron Roderick said yesterday.



SUTTON

Roderick is beginning a search to replace Leonard Hamilton, who resigned from Kentucky under pressure last year. He has the 15th-best record in college history and was sixth among active coaches before leaving Kentucky.

Sutton was not named in infractions that led to Kentucky being placed on NCAA probation. Infractions committee members have reportedly offered to write letters of recommendation on Sutton's behalf if any school that might consider hiring him.

"Anybody we look at, we would check with the NCAA to make sure that there are no violations," Roderick said.

The principal complaint cited by Kentucky in pressuring Sutton to resign concerned his management of a program with flaws dating to the previous regime.

Other names that have been mentioned for the Oklahoma State job include Oklahoma assistant coach Jim Kerwin, Southwest Missouri coach Charlie Spoonhour, Illinois State coach Bob Bender, Arkansas-Little Rock coach Mike Newell, Idaho State coach James Boutin and Arkansas assistant Scott Edgar.

Kerwin has said he is interested in the job.

Roderick said there were a number of coaches across the country who wanted to get into a NCAA Division I school. He said the Big Eight and the tradition at Oklahoma State also were selling points for the job.

He said he hoped it wouldn't take long to fill the vacancy.

"The most important thing is to get the best person for our job, whether it takes three days or three weeks. The most important thing is to make sure you get a good one."

Sutton, an Oklahoma State alumnus, has expressed interest in the job.

In Denver for the Final Four,

Sutton said the two things he would look for in a coaching job are a place where he could win and a nice place to live. He said Stillwater would fit the bill.

"I haven't heard from anyone from OSU yet. It all happened very quickly. But it's an outstanding program, one that's ready to take off," said Sutton, who was in Stillwater yesterday to visit with family.

Sutton resigned from Kentucky under pressure last year. He has the 15th-best record in college history and was sixth among active coaches before leaving Kentucky.

Sutton was not named in infractions that led to Kentucky being placed on NCAA probation. Infractions committee members have reportedly offered to write letters of recommendation on Sutton's behalf if any school that might consider hiring him.

"Anybody we look at, we would check with the NCAA to make sure that there are no violations," Roderick said.

The principal complaint cited by Kentucky in pressuring Sutton to resign concerned his management of a program with flaws dating to the previous regime.

Other names that have been mentioned for the Oklahoma State job include Oklahoma assistant coach Jim Kerwin, Southwest Missouri coach Charlie Spoonhour, Illinois State coach Bob Bender, Arkansas-Little Rock coach Mike Newell, Idaho State coach James Boutin and Arkansas assistant Scott Edgar.

Kerwin has said he is interested in the job.

Roderick said there were a number of coaches across the country who wanted to get into a NCAA Division I school. He said the Big Eight and the tradition at Oklahoma State also were selling points for the job.

He said he hoped it wouldn't take long to fill the vacancy.

"The most important thing is to get the best person for our job, whether it takes three days or three weeks. The most important thing is to make sure you get a good one."

Happy Spring!

Duck Head

- Shorts
- Slacks
- Shirts

All on SALE
pleated shorts as low as
\$16.99

Ray-Ban

Sunglasses by
Bausch & Lomb

20% OFF
over 70 styles to choose

Woolrich

Men's & Ladies

- Shorts
- Slacks
- Shirts
- Skirts
- Sweaters

All on SALE

Timberland

All on SALE
(Largest Selection)
in Kentucky

H

515 W. Main (Across from Rupp)
Mon-Sat 9-6; Fri 9-8

PINT PARTY
KICKS IN
THE
90's

APRIL 10 & 11
UK COMPLEX COMMONS
CENTRAL KENTUCKY BLOOD CENTER

Flamingo Bay
Tanning
and Toning
Wolff Tanning System

- 1 Visit \$3.00
- 3 Visits \$8.00
- 5 Visits \$10.00
- 10 Visits \$17.95
with coupon

269-9377
French Quarter Square
(Richmond Rd.)

Join SGA

Executive Branch
Cabinet members
needed for next year
(1990 - 91)

Many positions with different levels of involvement are available...Put your experience and leadership on your resume... Help serve students' needs and interests.

You Don't Campaign
Just Apply!

Apply today in 120 Student Center
Applications due by Friday, April 13th, 4:30 p.m.

3-Way
(Chili Spaghetti with Cheese)
& a slice of Garlic Bread

\$2.79

Hours: Mon-Thurs 11-11 • Fri-Sat 11-1 • Sun 12-10

Skyline
CHILI

Limit one coupon per person.
Not valid with other specials.
Valid UK Skyline only.
Expires: April 30, 1990

Student Activities

Get Involved

The Student Activities Board is Accepting Applications for the following positions:

President	Performing Arts
Vice President	Student Activities
Secretary/Treasurer	Student Activities TV
Public Relations	Spotlight Jazz
Cinema	Travel
Concert	Visual Arts
Contemporary Affairs	Indoor Recreation
Little Kentucky Derby	Members At Large (5)

Applications Are Due This Friday !!!!!!!
Applications Are Available in Room 203
Old Student Center

Hunter Hayes
Arts Editor

DIVERSIONS

20th century art exhibition opens at UK Art Museum



SKINNY BONES

COURTESY OF TED KIRKARD

HUNTER HAYES
Arts Editor

Top artists spanning a large portion of the 20th century are represented in the newest exhibit at the UK Art Museum. "Three Universities Collect: Twentieth Century Works on Paper," a joint effort between the UK, Indiana University and University of Notre Dame art museums, opened Sunday at the UK Art Museum.

Featured in the exhibit are works by Pablo Picasso, Andy Warhol, Henri Matisse, Ellsworth Kelly and Edward Hopper among others.

The exhibit was first shown on Sept. 17 at Notre Dame's Snite Museum. The collection then moved to Bloomington, Ind., on Jan. 23 before coming to UK, where it will stay until May 13.

Harriet Fowler, interim director of the UK Art Museum, said that the exhibit has been in planning for

more than two years.

"Bill Hennessey (Former UK Art Museum Director) came up with the idea over two years ago; I started writing the essays for the exhibit over two years ago," Fowler said. "There have been several trips made back and forth between the three schools."

Since each of the schools had several of the same artists' works, the works selected were important ones, Fowler said.

"Since there was some reputation in the artists, we wanted to make sure that we selected the best possible representations for the show," Fowler said.

Dean Porter, director of the Snite Museum, gave the exhibit's opening lecture at the Worsham Theatre.

Although most of the works on exhibit are from the last 20 years, there are also older ones, he said.

"There are some old masters," Porter joked, "which means that

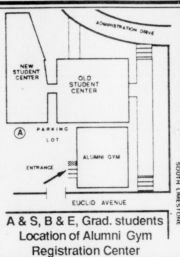
they are works done primarily before the 1960s."

Although each museum contributed about 41 works to the exhibit, some works from the IU Art Museum were only shown in Bloomington because their delicate condition prevented them from being moved.

For further information call the UK Art Museum at 257-5716.

ATTENTION: STUDENTS

Registration for four-week, eight-week and fall is **TODAY**, April 4th.



EARN CASH FOR THE HORSES Earn up to \$30 Week

HOW: By Donating Plasma

WHEN: Mon - Thurs • 7 AM - 8 PM
Friday • 7 AM - 6 PM
Saturday & Sunday • 8:30 AM - 2 PM

WHERE: plasma alliance
2043 Oxford Circle
Lexington, Ky 40504

WORSHAM THEATRE

Chinatown

Tonight-Sat.
7:30 p.m.
Sunday
7 p.m.

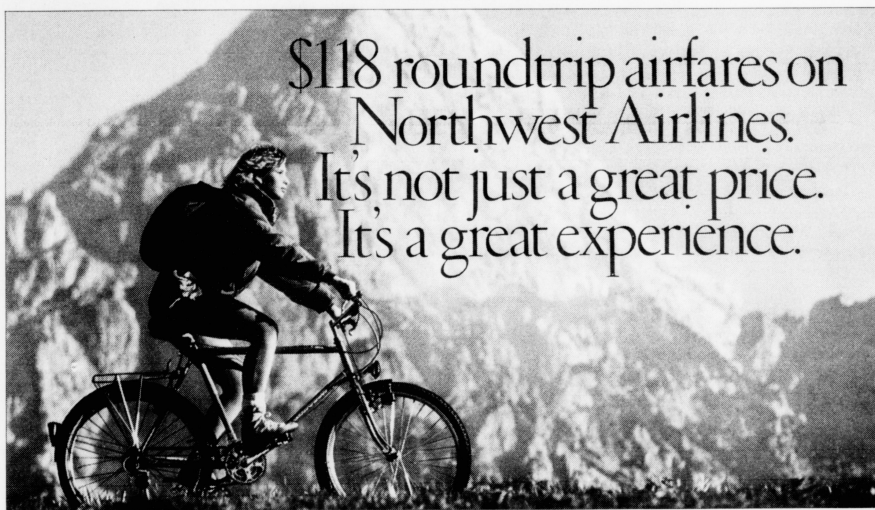
GORKY PARK

Tonight -Sat.
10 p.m.

Admission \$1.95
for more info
call 257-1287

LOOKING FOR A JOB?

FIND ONE IN THE KERNEL CLASSIFIEDS



\$118 roundtrip airfares on Northwest Airlines.
It's not just a great price.
It's a great experience.

Only for student American Express® Cardmembers.

Apply for the American Express® Card. Then get ready to take off. In search of adventure, action—or just simply to escape.

American Express and Northwest Airlines have arranged these extraordinary travel privileges on Northwest—exclusively for student Cardmembers.

■ CERTIFICATES VALID FOR THE PURCHASE OF TWO \$118 ROUNDTRIP TICKETS—to many of the more than 180 cities in the 48 contiguous United States served by Northwest. Each certificate is good for a six-month period, and they will arrive within six weeks after you receive the Card. Current Cardmembers will automatically receive their \$118 certificates by March 15, 1990 provided they are still full time students.*

■ 10% OFF ANY NORTHWEST FLIGHT—with your own personalized discount card, valid through January 1991 on all Northwest and Northwest AirlinK flights. (This discount is not applicable to the \$118 student certificates and other certificates, promotional or special status airfares.)

■ 2,500 BONUS MILES TOWARDS FREE TRAVEL—when you enroll in Northwest's WorldPerks® Free Travel Program.

AND NOW BECOMING A CARDMEMBER IS AS EASY AS A TELEPHONE CALL. Just pick up the phone, call 1-800-942-AMEX, and talk to us. We'll take your application and begin to process it immediately. (If you have your banking information handy, like your account number and bank address, it will help

speed the process.)

Keep in mind that our Automatic Acceptance Program makes it easier for you to become a Cardmember now, as a student, than it will ever be again.

And remember that as a Cardmember you'll enjoy all the exceptional benefits and personal service you would expect from American Express.

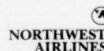
So don't miss out on a world of great experiences. Pick up the phone. Apply for the Card. And start packing!



Membership Has Its Privileges®

SOPHOMORES THROUGH GRADUATE STUDENTS:
APPLY TODAY

1-800-942-AMEX



*If you are already a student American Express Cardmember and have a question about this program, please send your written question, a copy of your student ID and class schedule to: American Express, P.O. Box 35029, Atrn. Student Marketing, Greensboro, NC 27425. Fare is for roundtrip travel on Northwest Airlines. Tickets must be purchased within 24 hours after making reservations. Fares are non-refundable and no itinerary changes may be made after purchase. Seats at this fare are limited and may not be available when you call. Travel must originate by certificate expiration date and be completed within 60 days of that date. Travel may not be available between cities to which Northwest does not have published routings. City fuel surcharges not included in fare from Boston (\$2.50), Chicago (\$5.00), Denver (\$2.00) and Florida cities (\$2.00). Certain blackout dates and other restrictions may apply. For complete offer details, call 1-800-942-AMEX. ©1990 American Express Travel Related Services Company, Inc.

THE AMERICAN EXPRESS® CARD. FOR STUDENTS MORE THAN EVER.

LONG NECKS
90¢
MONDAY, TUESDAY, WEDNESDAY
7 PM-11 PM
NO IMPORTS
Saratoga
CHEVY CHASE • 856 HIGH ST

Stanley H. KAPLAN EDUCATIONAL CENTER LTD.
Medical Plaza - Suite 16
2134 Nicholasville Rd.
276-5419
Classes start for
LSAT
on April 17th for June 11th Exam
Classes start for
GMAT
on April 17th for June 16th Exam
Call for Details

VIEWPOINT

Michael L. Jones
Editorial Editor

C.A. Duane Bonifer
Editor in Chief

Brian Jent
Managing Editor

Jerry Voigt
Editorial Cartoonist

Tom Spalding
Executive Editor

Tonja Witt
Campus Editor

Julie Esselman
Special Projects Writer

Student opinion favors ticket idea for SGA elections

The students have spoken: the Student Government Association president and vice president should be elected on the same ticket.

The issue was placed on this spring's ballot, and students responded 374-198 in favor of it being passed into law.

Placing the executive branch candidates on the same ticket was proposed three years ago, but the legislation stuck so badly with political interests that it was tossed out by the Senate.

Subsequent attempts to pass similar legislation, most recently an amendment sponsored by law school senator Jim Mussler, also have failed because they were proposed too close to election time.

But now is the perfect time for the Senate to consider electing a ticket to the executive branch. Election results are less than a week old and there is not nearly the political maneuvering going on in the Senate that takes place in the fall.

The argument for electing the president and vice president separately is that it provides for a check of power in the executive branch. Electing separate candidates also could be considered a safeguard against having two incompetent leaders and a chance to protect voters if they think the vice president would be just a "yes-man (or woman)."

But when you consider the friction that can be created when candidates from opposing tickets are elected, which has happened in the past, the benefits of electing the president and vice president on a ticket outweigh the disadvantages.

This year is a perfect example of what SGA can do when the president and vice president work together.

SGA President Sean Lohman and Vice President Paige Foster have complemented one another's styles quite nicely, which is one of the reasons SGA has had a productive year.

The executive branch ought to have an equal success next year because Lohman will be working with Vice President-elect Sarah Coursey, whom he ran with for re-election.

But SGA is not always guaranteed that it will have two officials who work well together. Therefore, to ensure a productive executive branch, the president and vice president should be elected on the same ticket. To make the change, it would require the SGA Senate to approve an amendment.

Lohman plans to introduce an amendment to the Senate at next week's committee meetings that would allow students to vote for tickets. We urge the Senate to work quickly to pass it before the semester is over and political aspirations get in the way.

Letters Policy

Writers should address their comments to: Editorial Editor, Kentucky Kernel, 035 Journalism Building, Lexington, Ky. 40506-0042.

We prefer all material to be type written and double-spaced, but others are welcome if they are legible. Writers must include their name, address, telephone number and major classification or connection with UK on all submitted material.

Frequent contributors may be limited so that we may publish letters from as many writers as possible.

We reserve the right to edit all material.

Stress management can make life a lot easier to handle

When you get to the end of your rope, tie a knot and hang on. And swing!

-Leo Buscaglia

Dave hasn't read a chapter in his Biology 101 book since the semester began. He failed the first exam, and in two days, he has another one over six chapters. He is in danger of failing the class if he doesn't pass this test.

Gina began the semester with \$2500. Unfortunately, she only has \$250 left with still a month of bills totalling \$215 before she returns home for the summer.

Brian and Greg were great friends at the start of the school year. They got an apartment together, but in the last few months Greg's laziness has really been getting on Brian's nerves.

Bill is starting his junior year in college still undecided about which major to choose. His parents are really pressuring him to make a decision.

Sarah is graduating in May. All of her friends have gotten

Guest OPINION

jobs, but she hasn't even gotten an interview with a company she's applied to.

These students all have one thing in common. They are experiencing STRESS!

Financial difficulties, being behind in class work, interpersonal problems and career decisions are just a few of the stressful situations college students encounter.

Stress is an everyday fact of life. It is the way your mind and body react to any situation that is positive or negative. The way you handle stress determines whether it will be helpful or harmful.

Helpful stress can give you an extra burst of energy.

This, in turn, can help you meet physical challenges, solve problems and reach goals.

Harmful stress, on the other hand, can cause headaches, backaches, loss of appetite, constant fati-

gued, sexual problems, muscle tension and depression. Some serious physical ailments include peptic ulcers, arthritis, asthma, cardiac arrhythmias, circulatory problems and even cancer.

Effective stress management will aid you in getting the most out of your life. Learning to relax can counteract your body's damaging reaction to stress.

College stress cannot be prevented but can be reduced. Your advisor can help you select a major and relevant courses. Other students also can give you valuable, yet biased, insight to courses and instructors. The Career Center counselors can aid you in finding a job, regardless of your major.

The Center, located in the Matthews Building next to the College of Business & Economics, also offers workshops, such as resume writing and interviewing skills. Their services are free to all UK students and alumni.

To ease the stress of studying, choose a quiet place. Take a 10 minute break for every hour of studying to loosen muscles and to ab-

Effective stress management will aid you getting the most out of your life...College stress cannot be prevented but can be reduced. Your advisor can help you select a major and relevant courses. Other students also can give you valuable, yet biased, insight to courses and instructors. The Career Center counselors can aid you in finding a job, regardless of your major...

...sorb what you've studied. Learn to follow a daily schedule. As a general rule, plan to spend two hours studying for each hour you spend in class. Adopting healthy habits can make stress more manageable. Eat right. Exercise regularly. Get plenty of sleep. And take time to relax.

...dying for each hour you spend in class. Adopting healthy habits can make stress more manageable. Eat right. Exercise regularly. Get plenty of sleep. And take time to relax.

If you'd like someone to help you cope with stress, Mental Health in Student Health provides free, confidential counseling. Call 233-5511 to make an appointment.

Elizabeth Watson is a communications intern in the health education services of the dean of student's office.



Chinese democracy Memorial day in China should be day to remember

Guest OPINION

April 5th is the traditional Memorial Day in China. On this year's Memorial Day, the Chinese people will certainly pay tribute to those people who were killed in the democratic movement by the government last June. The June massacre in China killed thousands of people and the world was shocked by this brutal action of the Chinese Communist Government.

By using force, the dictators of Chinese Communist Government believe that they can crush the people's ideas of liberty and democracy. The dictator Deng Xiaoping is reported to have said that by killing a million people the Chinese Communist Government can put down the democratic movement for at least 20 years. Since last June, the Chinese Communist Government has employed all controlled media to justify its action and rewrite the history of last June's massacre. Did the crackdown successfully destroy the ideas of liberty and democracy in China? Certainly it did not! As a matter of fact, the June massacre made more and more Chinese people realize that their country desperately needs liberty and democracy.

The changes in Eastern Europe proved that brutal crackdowns fail to destroy the ideas of liberty and democracy and has certainly in-



A student leads protesters in demonstration involving an estimated 500,000 people in Canton, southern China this summer. Their will may still succeed one day in communist China.

spired the Chinese people. Do the dictators of the Chinese Communist Government really believe that they can destroy its people's will?

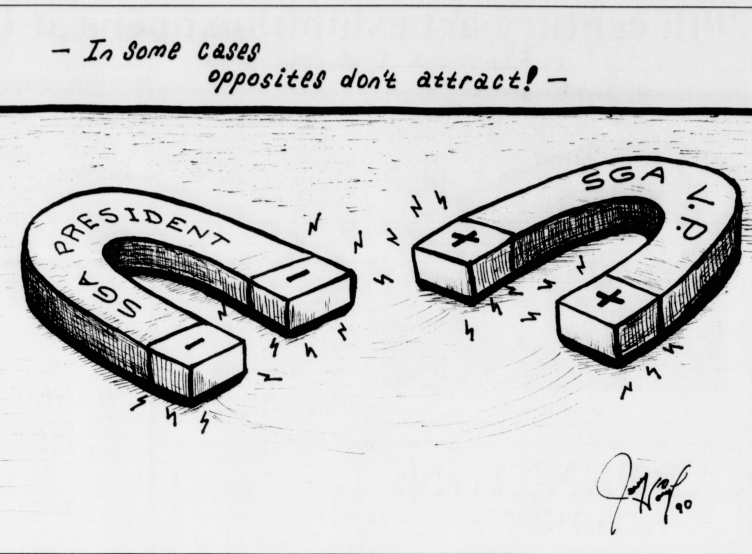
If they do, why did they recently reclose Tiananmen Square to

the public on Chinese Memorial Day?

Apparently, they are afraid of the people's power and know that the upheaval of democracy can happen again anytime in China. As a matter of fact, since more

and more Chinese have been calling for democracy and liberty, their will has become stronger and stronger!

Chifu Huang is a biological sciences graduate student.



GOVE... Paul M... TAND... USED... WORD... 3 BR... 1987... 1987... 1988... 1988... 1989... 1989... Editor... ATTE... 1 W... 6 M... 10 D... 14 -... 15 J... 16 F... 17 E... 18 T... 20 P... 21 S... 23 C... 24 M... 26 T... 28 M... 30 W... 31 B... 32 S... 36... 37 S... 38 C... 39 P... 42 -... 44 F... 45 S... 46 R... 49 M... 50 W... 51 G... 52 M... 55 P... 58 A... 1... 14... 17... 20... 28... 31... 36... 39... 46... 50... 55... 60... 63... 44-K

High-soluble fiber healthful, study shows

Associated Press

WASHINGTON — A UK medical professor has fired the latest salvo in the ongoing dispute over the benefits of eating oat bran.

Dr. James Anderson, known to some as the "father of oat bran," says a new study proves that high-soluble fiber, when eaten as part of a low-cholesterol, low-fat diet, can help in lowering blood cholesterol levels.

"Oat bran recently has taken it on the chin," he said. "People have been bashing out bran and saying oat bran doesn't work, but we know that is not true."

Anderson was referring to recent-

ly published research that indicated that soluble fibers such as oat bran do not actually remove cholesterol from the bloodstream. Medical experts say lowering cholesterol levels can reduce the risk of heart disease.

But Anderson said the new UK study showed decreases in two different forms of cholesterol were found in subjects who ate a fiber-concentrated cereal.

Anderson said the study was conducted by UK's Metabolic Research Group and corroborated by independent groups in Washington, D.C., and Massachusetts. He released the findings at a Monday meeting of the Federation of Amer-

ican Societies for Experimental Biology.

The six-week study involved 44 men and women between the ages of 25 and 70 years. All had serum cholesterol levels of more than 200 milligrams per decaliter, the point after which experts believe heart disease can occur.

The subjects were divided into two groups.

One group ate four ounces of cereal a day containing 12 grams of soluble fiber.

The control group ate 4 ounces of the lower-fiber cereal.

The cereal eaten by the first group contained oat bran and psyllium, a natural grain with about

eight times the soluble fiber of oat bran.

Both groups followed a low-fat diet designed by the American Heart Association.

The study found an 8.4 percent reduction in total serum cholesterol, from 252 milligrams per decaliter to 230, in subjects who ate a low-fat diet and a high-soluble-fiber cereal.

The study also found a 12.9 percent reduction in LDL cholesterol, the so-called "bad" cholesterol.

Cholesterol levels remained unchanged in subjects who received a cereal with little or no soluble fiber.

CBS' loss is the public's gain

Continued from page 2

Imagine the "Big Monday" team of Musburger and Dickie V.

"Hello everybody, Brent Musburger and Dick Vitale here for this phenomenal matchup of perennial Big East powers, the mighty Hoyas of Georgetown and the fourth-ranked Orangemen of Syracuse University. It's a Big East battle on ESPN."

"Hey wait a minute BM. This is my show, MP-My Parade. Things will be frantic tonight in

the Dome, baby. All these PTers, Windex men and two Rolls Royce coaches — Ya gotta love it baby."

By the time this dynamic duo finishes their introduction it will be halftime.

"Mr. Olympics" Jim McKay started at CBS before going to ABC for a spectacular career "spanning the globe" for "Wide World of Sports," the Olympics and the Triple Crown.

Musburger should not be so

lucky.

At the conclusion of Monday night's broadcast, Musburger was amazingly professional and confident.

Billy Packer and Jim Nance seemed near tears as they gave their on-air farewells to Brent.

But there isn't really much to cry about.

Staff Writer Gregory A. Hall is a journalism freshman and a Kernel columnist.

Races

Continued from page 1

the Greeks together."

Journalism sophomore Chris Porter said Greek Week was a chance for the organizations to show a different side of themselves.

"It's a time we can all unite as Greeks," Porter said. "It's also a way to let the campus know we do have fun and we aren't all we are made out to be."

Greek week activities started off Sunday with Rent-a-Greek. For a \$25 donation businesses or individuals could rent two Greeks for three hours to help out in the home or yard.

FREE
1st Month's Rent Free!

BROOKSTONE

1 and 2 bedrooms \$260-\$315

- new carpet and vinyl throughout
- new kitchens with appliances
- less than one mile from UK campus
- laundry facilities
- on site management/maintenance

SHORT TERM LEASES AVAILABLE
1313 Nancy Hanks Drive
255-2765

WANTED

- U.K. students, staff and others interested in transferring to the College of Home Economics

A Transfer Advising Session will be held to prepare for advance registration:
Wednesday, April 4
from 4:30 to 6:00 pm
Room 128 Erickson Hall

- Please bring academic records from your current Deans. Office to EH103 prior to attending a session

UK tuition increase approved by Board

Continued from page 1

people may not use it, but it's nice to know it's there when we need it."

Lohman said that UK and the University of Louisville came away with relatively low tuition increases, with a rise of 16.7 percent. Students at state-supported institutions on the average faced an 18 percent increase in tuition over the biennium, Lohman said.

In other action yesterday, UK's trustees:

"Were updated on the status of a search committee's hunt for a replacement to David Roselle, who resigned in December.

UK has received nine applicants and 38 nominations, according to Board of Trustees Chairman Foster Ockerman.

UK interim President Charles Wethington said he has not applied and doesn't know if his name has been submitted. He said he still hasn't made his decision whether to apply for the job.

"The Board's Finance Committee agreed to permit the University's consultant, Gaddy Engineering Company, and Arch

Mineral Corp. to assess the coal reserves in the outlying tracts of Robinson Forest.

The tracts are not part of the petition filed Feb. 26 with the National Resources and Environmental Protection cabinet to declare lands near the forest unsuitable for surface coal mining.

"The board unanimously approved a resolution in honor of former trustee Nicholas J. Piscano, who died March 11.

Trustee Robert F. Stephens, reading from the resolution, said Piscano was "held in esteem nationally as a physician and leader in the field of family medicine."

Piscano "was a faculty member at the University of Kentucky highly respected by the thousands of students who over many years would 'stand in line' to get into his class in biology and who remember him as a man of great depth and wit," Stephens read.

"Wethington was praised by Ockerman for his efforts in lobbying for higher education and UK in Frankfort during the 1990 General Assembly.

Apartment and Townhouses for Rent

Why wait for the summer rush to find an apartment for Fall semester? Deposits now being accepted for August 1990, 1, 2, 3 and 4 bedroom apartments and townhouses near to UK, currently leasing for May and August. Three month Summer leases available.

- 1, 2, 3 and 4 bedroom apartments and townhouses on Transylvania Park a thirty second walk to campus.
- 2 bedroom townhouses on Euclid Ave. between Aylesford Place and Transylvania Park.
- 1, 2, and 4 bedroom apartments on Aylesford Place across from the Sigma Pi fraternity house.
- 2, and 3 bedroom apartments and townhouses on East Maxwell near Woodland Park.
- 1, 2 and 3 bedroom apartments on Woodland Ave. by Maxwell and High Streets.
- 1 and 2 bedroom apartments on East High St. near Woodland Park and Arlington Ave.

All buildings have parking lots (No more tickets or getting towed), air conditioning, hardwood floors or carpeting, some with dishwashers, some others with fireplaces and skylights. Deposits being accepted for occupancy August 15, 1990. Secure your apartment before mad rush this summer, why make an extra trip to Lexington this June or July?

Wassmer Properties 266-7881 Mon-Fri 9 am to 4 pm
Walk to School • Walk to the bars • Walk to the library • and walk home

THE WILLIAM S. TISDALL DISTINGUISHED LECTURER SERIES

The Department of Special Education presents:
DR. DONALD BAILEY
University of North Carolina, Chapel Hill

Topic: "Assessing family needs: professional and family considerations."

April 5, 7:30 p.m., 158 Taylor Education Bldg.
April 6, 2:30 p.m., 231 Taylor Education Bldg.

THE PUBLIC IS INVITED TO ATTEND!

Fergie's
FINE FOOD AND SPIRITS

GRAND OPENING
APRIL 12TH

393 WALLER AVE. (Imperial Plaza) • 252-3374
* Appetizers & Drink Specials *

UK
Established
Leader
Institute

Attention: Active Juniors and Seniors
Expand your leadership abilities while earning elective credit.
Applications are now being accepted for the Fall, 1990

The Institute is a selective, developmental program for involved junior and senior students who would like to expand their perspective on leadership while earning 3 hours credit through Experiential Education.

The eight week program meets Wednesday afternoons, from 3-6 p.m. September 26 - November 28, and includes two Saturday programs.

Applications are available in the Student Activities Office, Room 203 Student Center and the Student Organizations Center, Room 106.
Applications being accepted through April 27th.

For further information on the Established Leader Institute program contact Cynthia Moreno at 257-1999

HELP!

Even with all the work you've done, you still need 3 hours, Right? Don't Panic!
Take an Independent Study Course home with you this summer. Come to our offices and see the study guide for the course you need.

Room 1 Frazer Hall
257-3466

UK
UNIVERSITY OF KENTUCKY

COME IN AND PICK UP A CATALOG

DOMINO'S PIZZA

FORGET HIGH PRICES!

IT'S TIME FOR DOMINO'S PIZZA.

269-3030 801-805 Euclid Ave.
276-4437 1641 Nicholasville Rd.

<p>BUY ONE 10" ORIGINAL CHEESE PIZZA FOR ONLY \$4.99 PLUS TAX AND GET ANOTHER FREE!</p> <p><small>Valid at participating stores only. Not valid with any other offer. Prices may vary. Customer pays sales tax where applicable. Delivery charges included in prices. Our drivers are not permitted for sale deliveries. Good thru 5/1/90</small></p>	<p>BUY ONE 14" ORIGINAL CHEESE PIZZA FOR ONLY \$8.99 PLUS TAX AND GET ANOTHER FREE!</p> <p><small>Valid at participating stores only. Not valid with any other offer. Prices may vary. Customer pays sales tax where applicable. Delivery charges included in prices. Our drivers are not permitted for sale deliveries. Good thru 5/1/90</small></p>
<p>ONE 10" THREE TOPPING ORIGINAL PIZZA \$5.95 PLUS TAX</p> <p><small>Valid at participating stores only. Not valid with any other offer. Prices may vary. Customer pays sales tax where applicable. Delivery charges included in prices. Our drivers are not permitted for sale deliveries. Good thru 5/1/90</small></p>	<p>ONE 14" TWO TOPPING ORIGINAL PIZZA \$8.95 PLUS TAX</p> <p><small>Valid at participating stores only. Not valid with any other offer. Prices may vary. Customer pays sales tax where applicable. Delivery charges included in prices. Our drivers are not permitted for sale deliveries. Good thru 5/1/90</small></p>