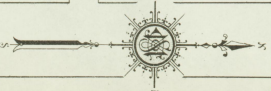
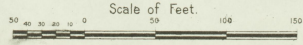
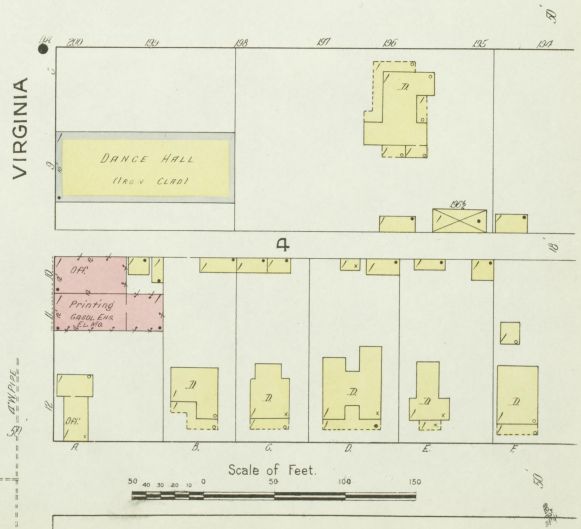
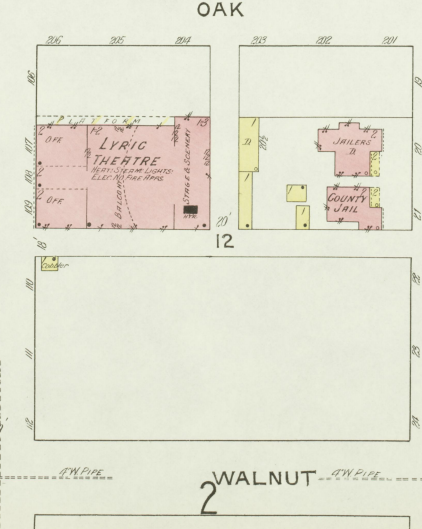
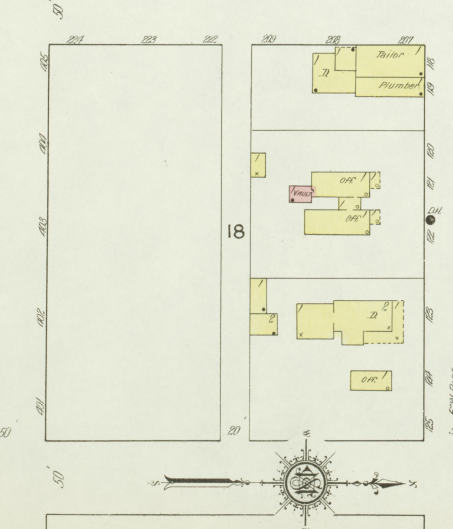
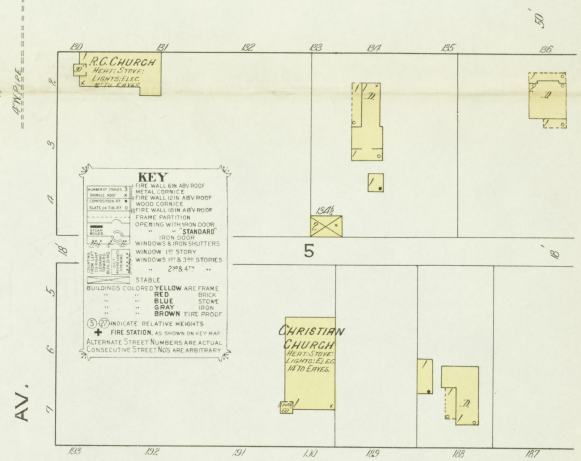
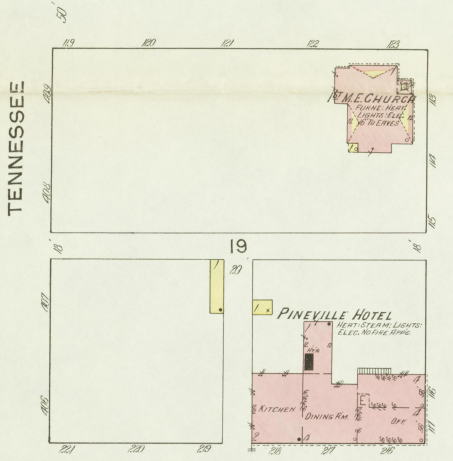
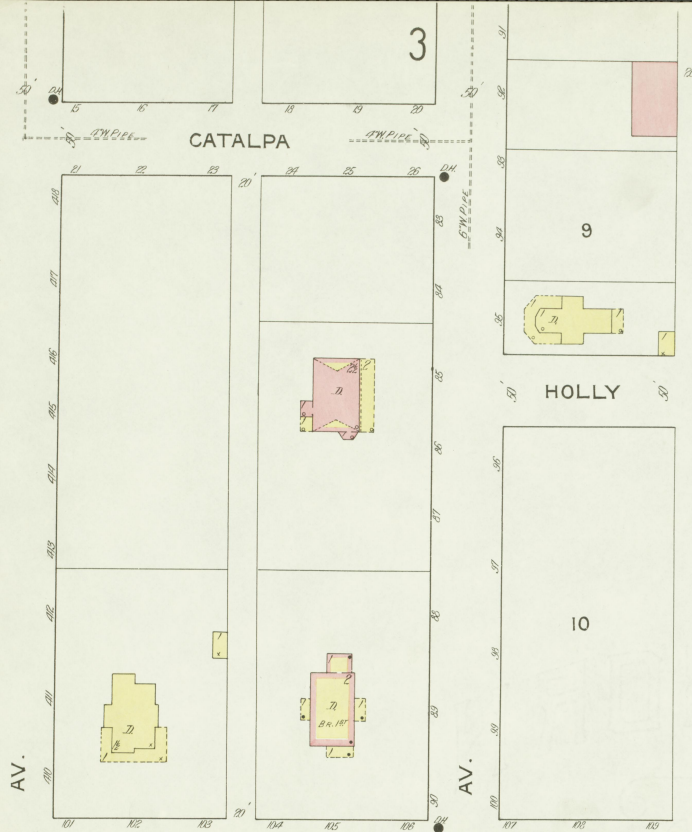
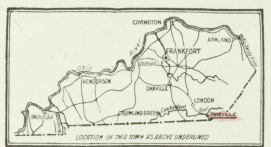


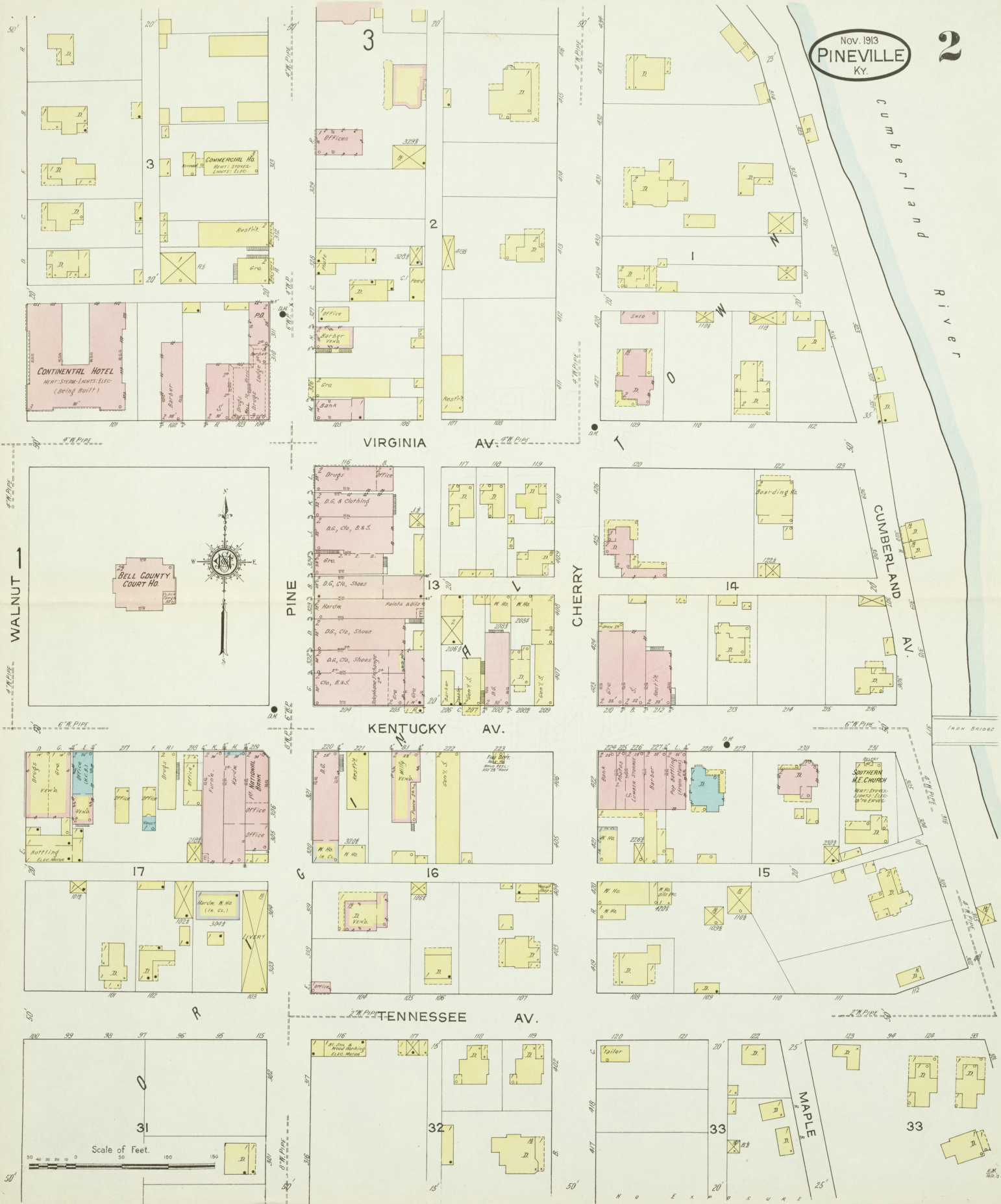
WATER FACILITIES - Gravity & direct pressure system of water works. source of supply dam across small stream in Court No. 10, providing 7 million gals pressure 160 lbs. Principal source of supply springs under Cumberland River from which water is carried by water-tight duplex pump 200 ft x 7 in capacity 250 gals per min. & 600000 gal capacity. Acting pump capacity 250000 gal. direct into mains & into 15000 gal reservoir located on 1015 S of Court No. 10, over 1500 sq ft. pressure 50 lbs. - about 175 ft. 41' dia. 7' height, 20' diameter. System installed 1830, remodeled 1904.

FIRE DEPT. - Organized - 3 Hose Carts, 350 2 1/2" hose 60' - 1 hose cart located as shown on map. 2nd hose cart located in part of town 8' x 4' covered by shed, called West Pineville - Alarm by bell on Court No. 10. Streets unpaved - grass level - Public Lights Electric.

INDEX

SPECIALS	BLK	BLK	BLK
Baptist Church (Negro)	3	L	1
Christian Church	1	P	1
Commercial House	1	Steam Laundry	3
Continental Hotel	2	Water Co. Pump & Sta.	3
County Court House	3	Post Office	2
Jail	3	Presbyterian Church	3
Cumberland Light and Ice Co.	3	Public School	3
Fire Department	2	Riverside Hotel	3
First Methodist Episcopal Church	1	Roman Catholic Church	1
National Bank Building	2	Southern Meth. Episcl Church	2





Nov. 1913
PINEVILLE
KY.



Scale of Feet. 2 30 40 50 100 150