

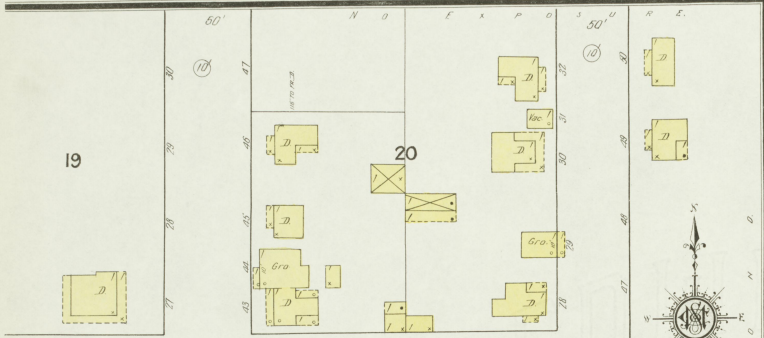
2



JAN 26 1916

WATER FACILITIES: Poor -
FIRE DEPT: No Steam Eng. No Hand Eng. No Hose
City Two 20 gal. chemical tanks on wheels -
200' 1" hose -
Grades as shown - Streets not paved -
Public lights none.

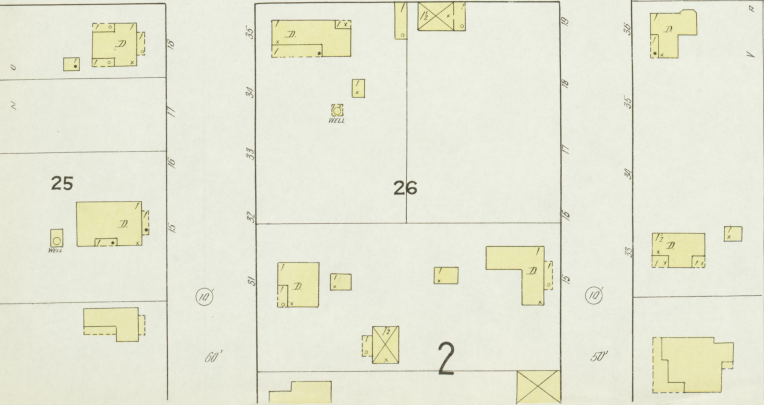
SEMINARY



2ND ST. N.



3RD ST. N.



INDEX

SPECIALS	INDEX	INDEX	INDEX
Baptist Church,	2	Christian Church,	3
Benton Hotel,	2	County Court House,	3
Public School,	1	Fire Department,	3
Black & Clinton, Tobacco Prizery,	3	Post Office,	3
Brandon, O., Saw Mill,	1	Lockup,	3
		Methodist Church, Bearden St.,	3
		Seminary St.,	2
		Treas Lumber Co.,	3

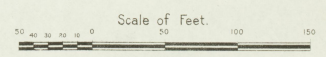
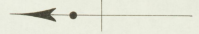
34

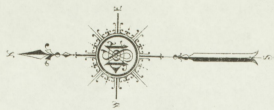
ATHLETIC FIELD

O. BRANDON, SAW MILL
NO WATCHMAN - POWER - STERIA -
FIRE - HEAT - NO LIGHTS -
NO FIRE HOSE.

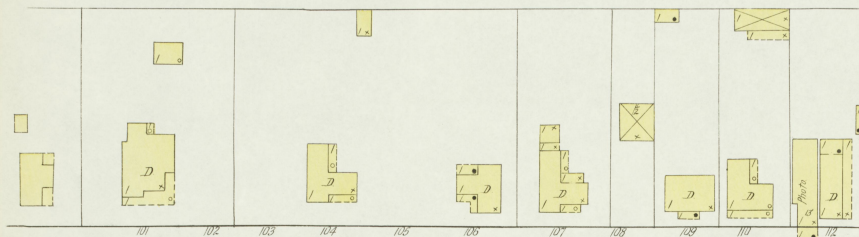
44

MAIN CROSS





17



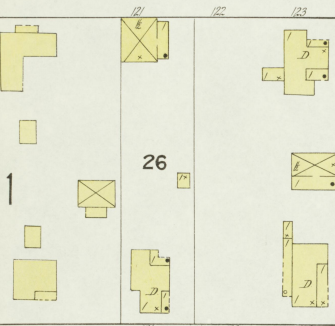
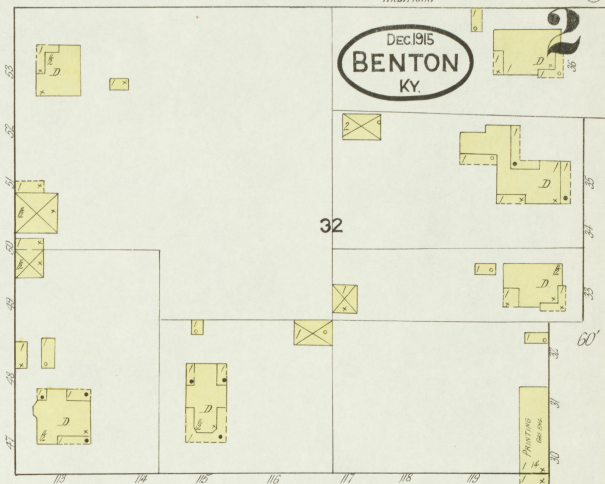
CLAYTON

SIoux

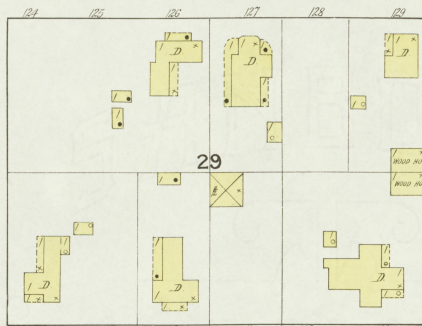
ARBITRARY

DEC 1915
BENTON
KY.

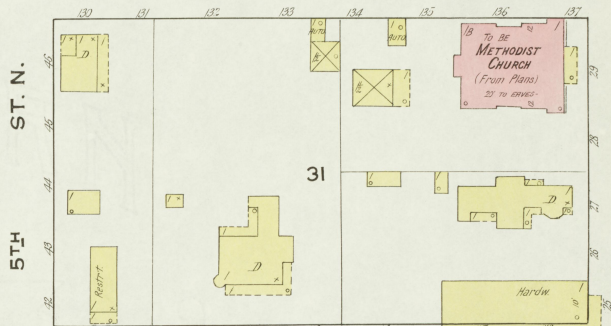
32



26



29



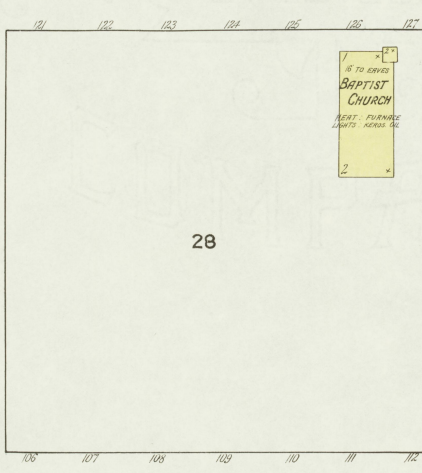
31

ST. N.
5TH



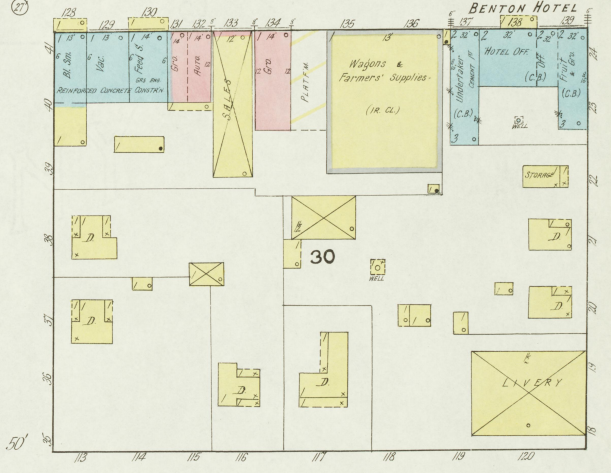
25

ST. N.
4TH



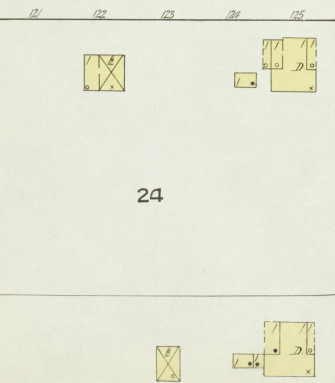
28

MAIN

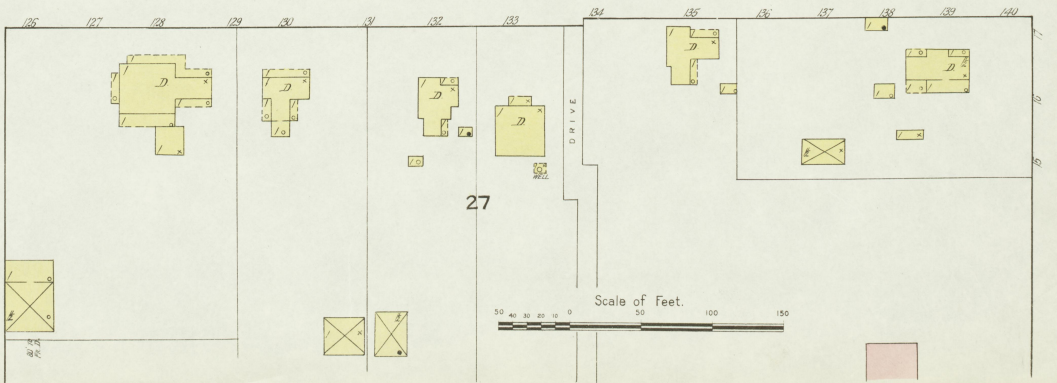


30

SEMINARY



24



27

BEARDEN

