

Population 10000. Prevailing Winds, N. & E.

WATER FACILITIES

Water supplied by the Catlettsburg Kenova Ashland Water Co. which maintains the old Ashland Water Works pumping station as a reserve. Pumping station of the former company is situated on the Big Sandy River at Catlettsburg, five miles S.E. of Ashland. (See sheet No. 25) and supplies water to three towns aggregating a population of 6500. Water pumped directly into a reservoir of 20 million gals. capacity located on hill 1/2 mile from pumping station at an elevation of 300 ft. above same and approximately 400 ft. above general level of town by one Leitch-John Gordon steam force pump (14x18x20) capacity 2 1/2 million gals. and one large horizontal duplex high duty rope drive power pump (14x20) capacity two million gals. per day, run by 280 H.P. gas engine.

Water is also pumped from river into a basin of 200,000 gals. capacity by the above three pumps also by one old (rebuilt) Smith-Vaile steam force pump (12x18) capacity two million gals. per day, from which it is again pumped to reservoir by one Worthington compound condensing pump (18x30x25) capacity one million gals.

The Ashland Water Co's pumping station (in reserve) is located on Ohio river. (See sheet No. 25) is equipped with two beam differential pumps, combined capacity three million gals. and one Cameron steam force pump, 1741 H.P. Water pumped into reservoir of 10 million gals. capacity, elevated 200 ft. above general level of town. Use of pipe supplies and discharges water to and from reservoir. Reservoir is also kept full by gravity from reservoirs at pumping station at Catlettsburg. Pumping machinery in poor condition.

The City of Ashland has voted bonds to buy up water works and use old pumping station for their water supply. 20 miles of water pipes, 4" to 12" diam. 165 double hydrants, 12 private double hydrants. Pressure from 65 to 85 lbs. Average daily consumption 1 1/4 million gals. System was built in 1892, since which time many alterations and extensions have been made.

FIRE DEPARTMENT

Five men and one chief, six sirens, whistle alarm, two Gamewell fire alarm boxes. Total amount of hose, 3700 ft. 2 1/2" diameter rubber lined, in good condition. Three fire stations, equipped as follows:

Station No. 1, 7th and Winchester Av. One hand hose cart, and 500 ft. 2 1/2" hose. Station No. 2, Central, 7th and Greenup Av. Three men, two hoses. One hose wagon with 800 ft. 2 1/2" hose. 60 ft. of ladders and two 3 gal. chemical extinguishers. One hose wagon and 1000 ft. of hose in reserve. Station No. 3, 27th and L. Carter Av. Three men, two hoses. One hose wagon, 1000 ft. 2 1/2" hose, 40 ft. of ladders, two 3 gal. chemical extinguishers.

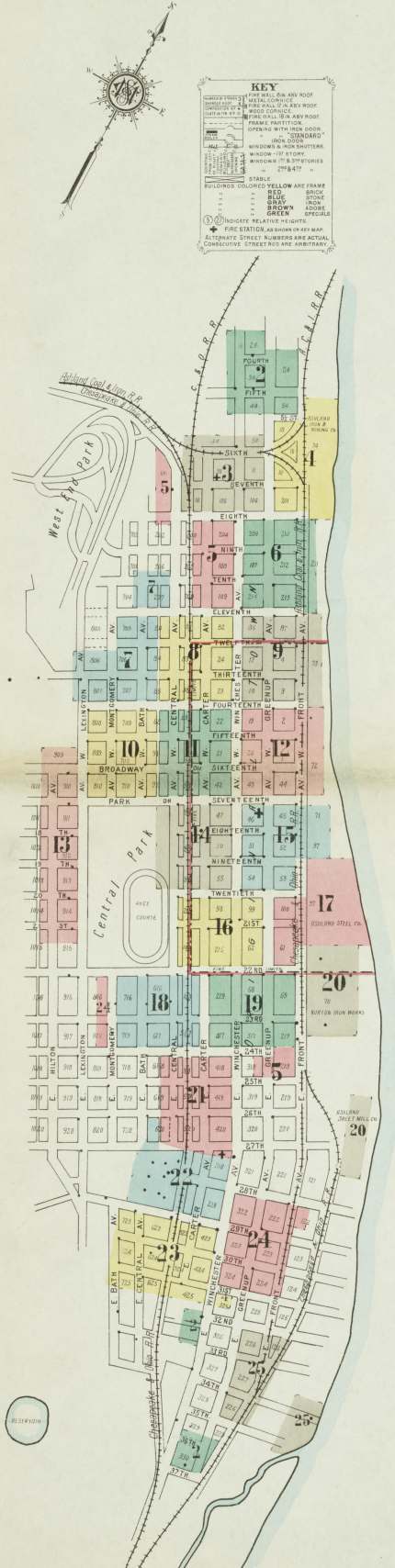
Gravel streets. Streets mostly all brick or asphalt paved. Public lights electric.



SCALE SOFT TO AN INCH 11 BROADWAY, NEW YORK

Feb'y. 1912

Copyright 1912, by the Sanborn Map Co. C.D.F. 20266

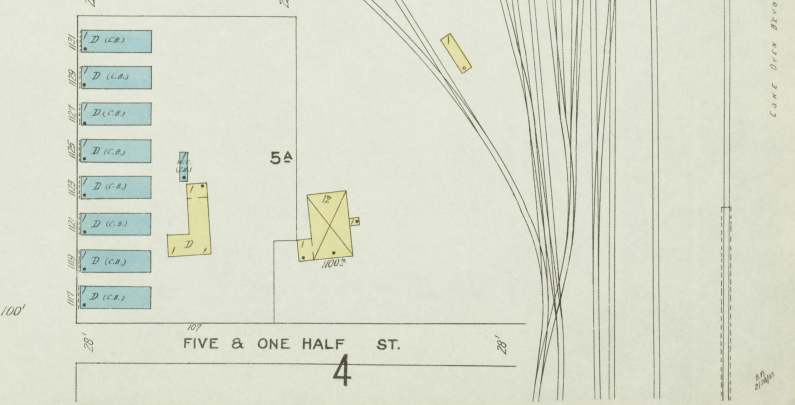
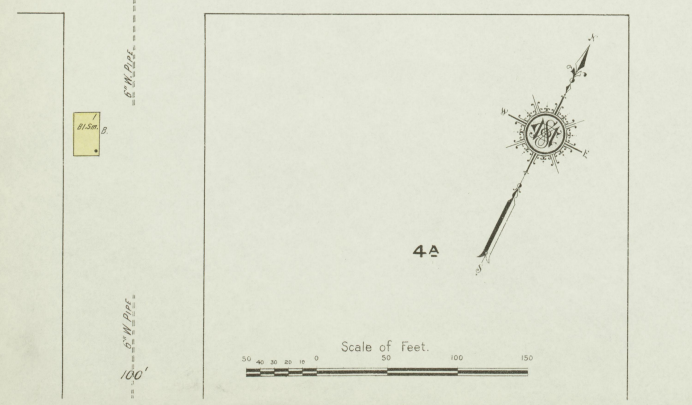
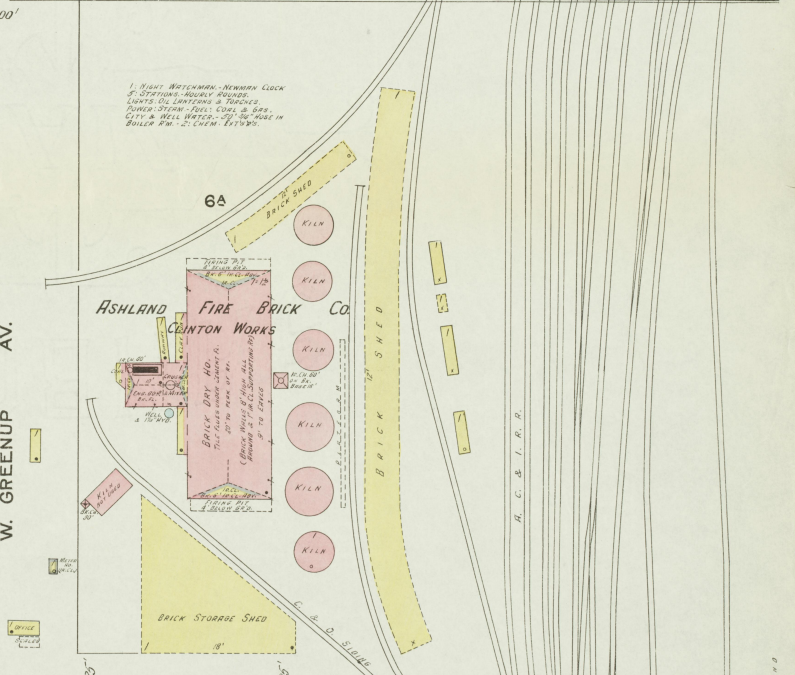
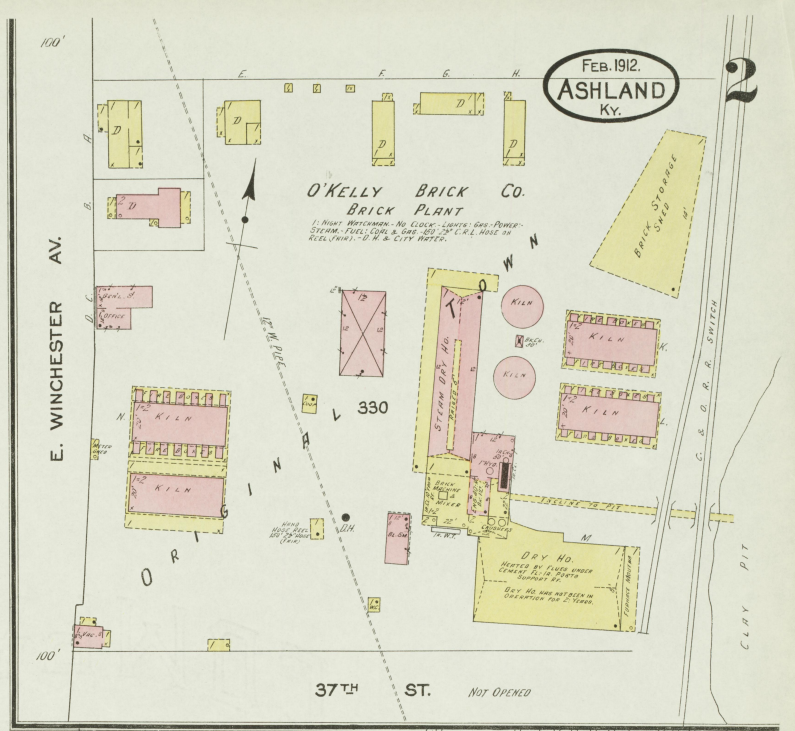
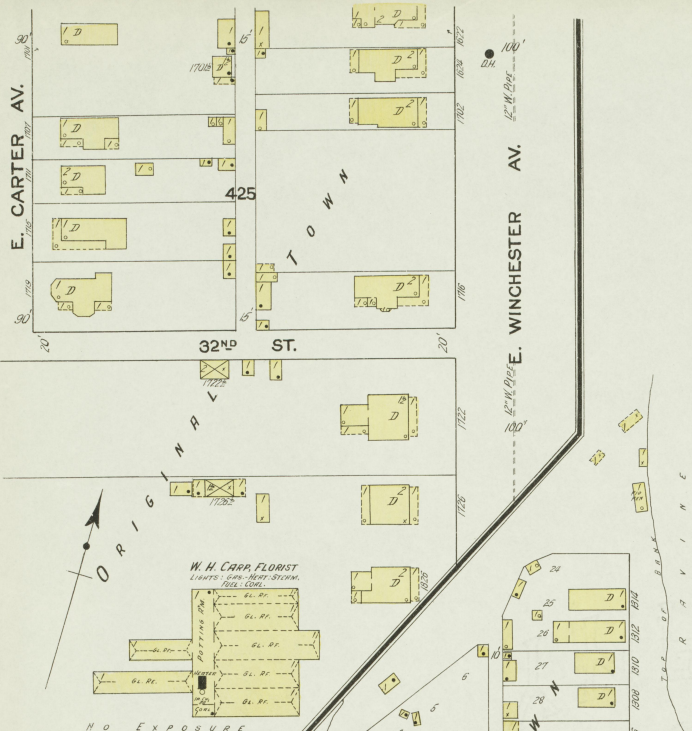


R R I V E R O H I O

INDEX

Table with columns for street names and page numbers. Includes sections for 'STREETS' and 'STREETS' with various street names and their corresponding page numbers in the index.

* Indicates only one side of Street shown.



FEB. 1912.
ASHLAND
KY.

Clark Ordn. Systems

4

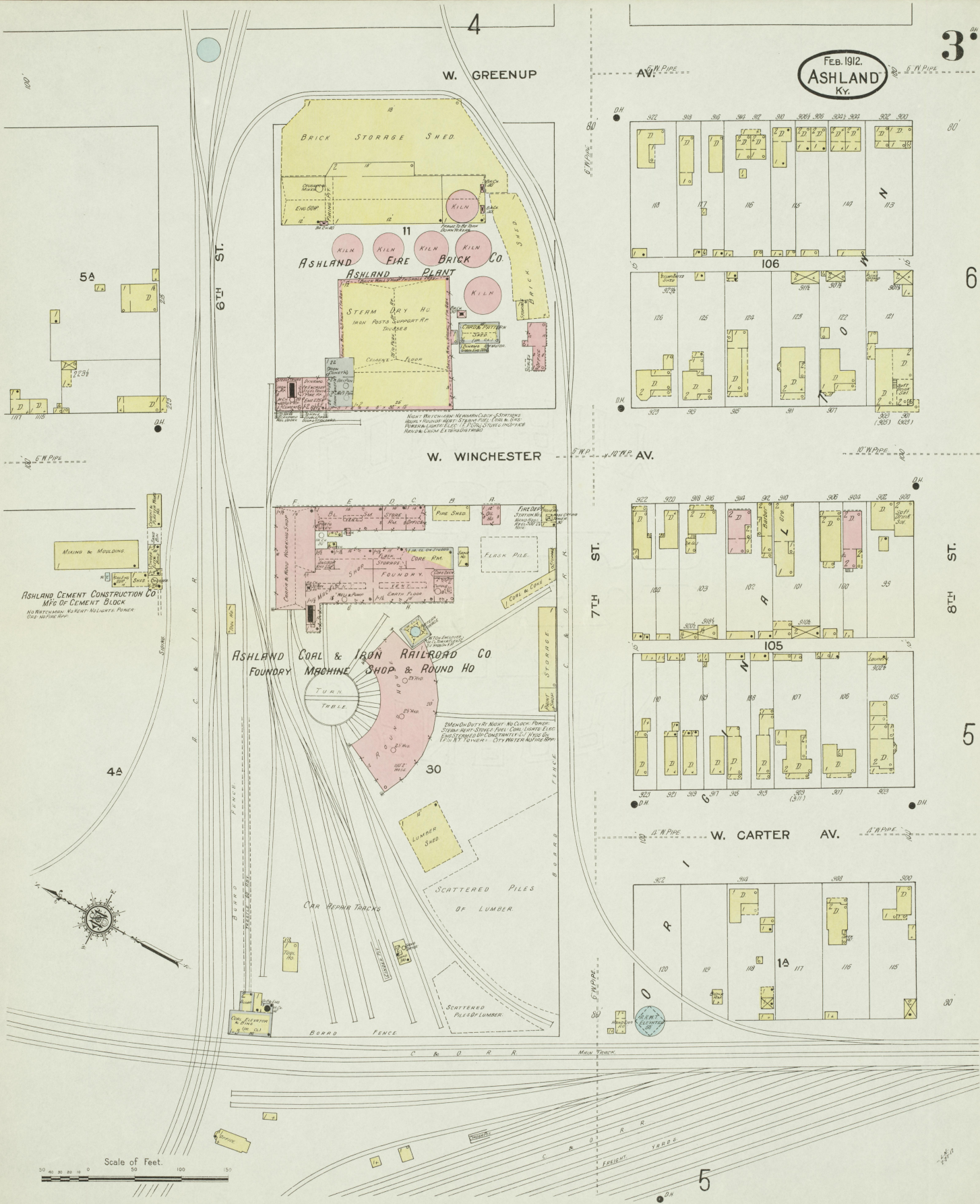
FEB. 1912.
ASHLAND
Ky.

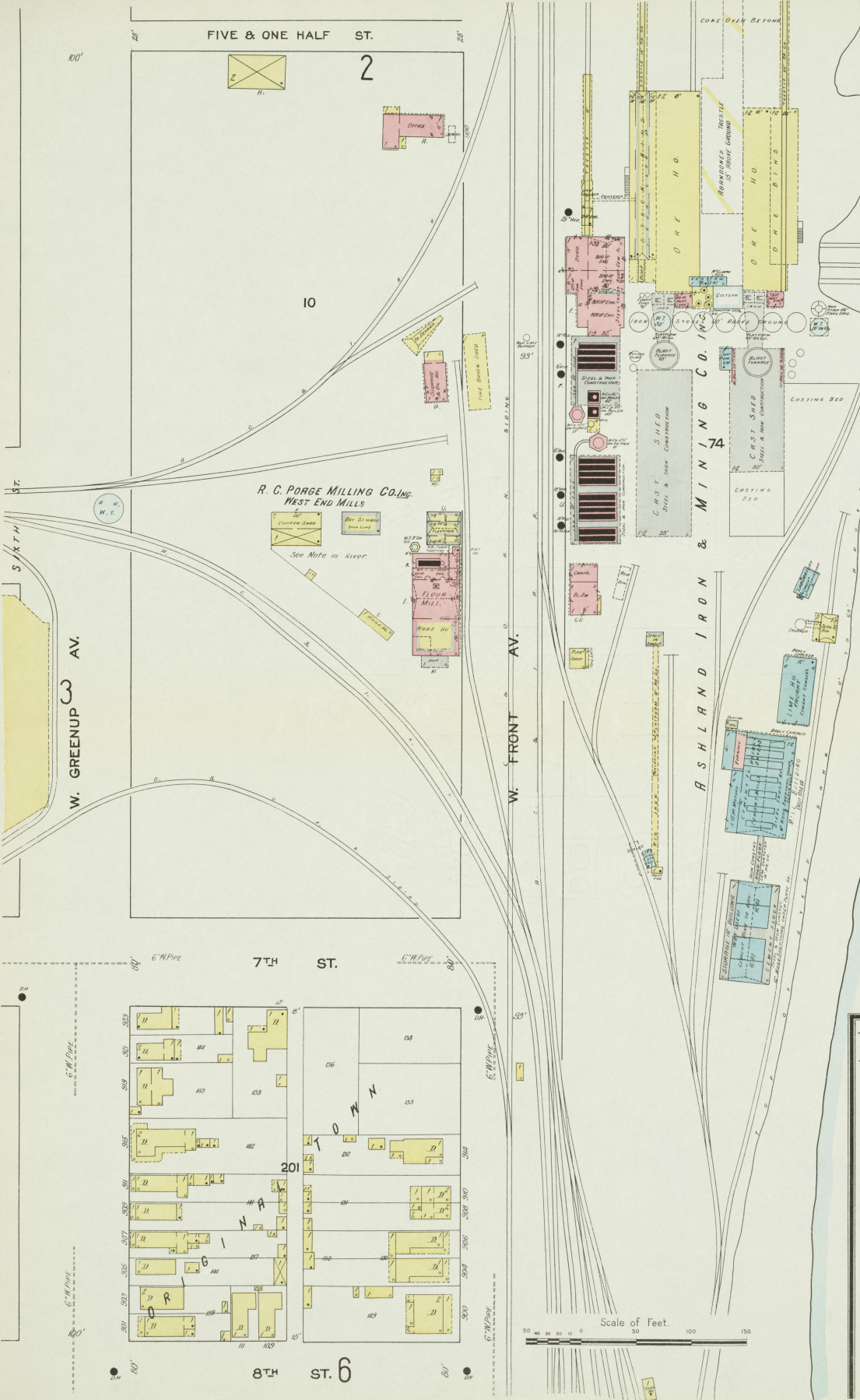
3⁰⁴

6

5

5





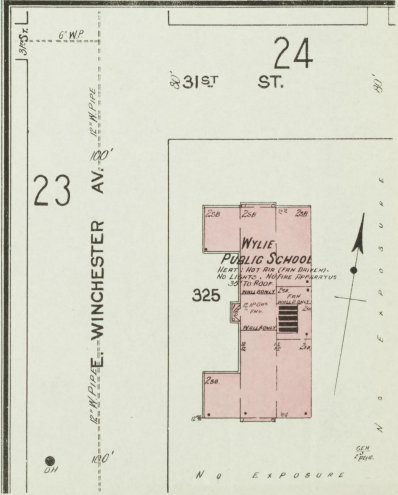
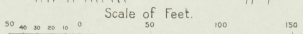
R.C. PORGE MILLING COMPANY INC.
WEST END MILLS

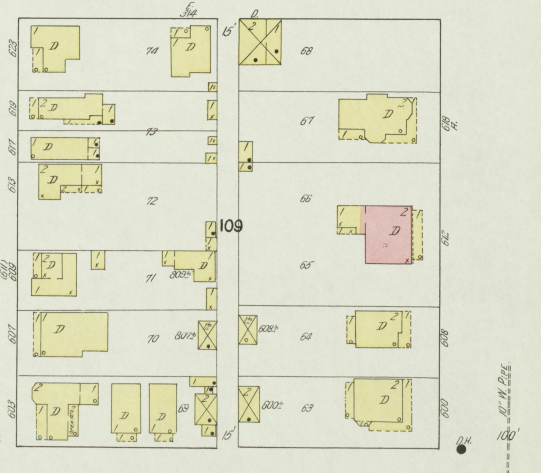
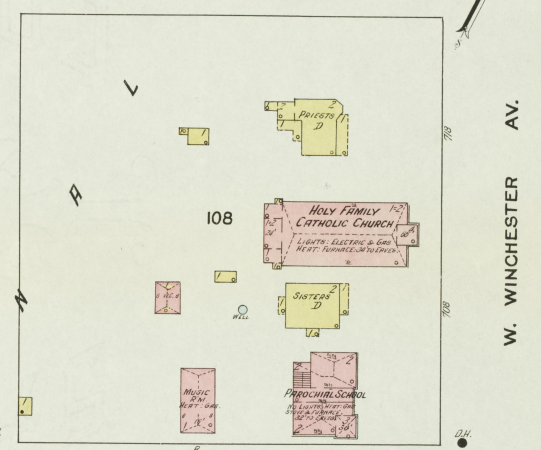
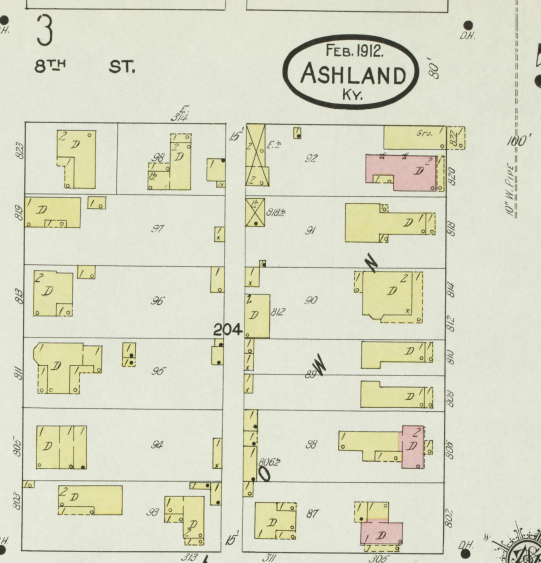
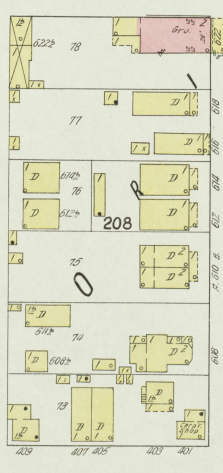
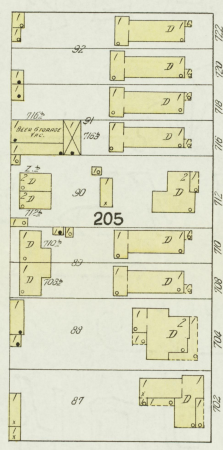
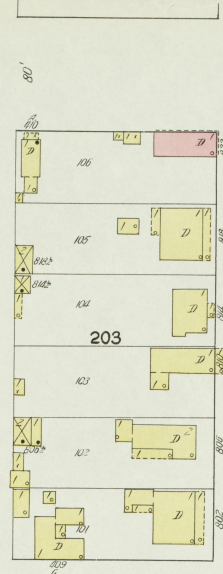
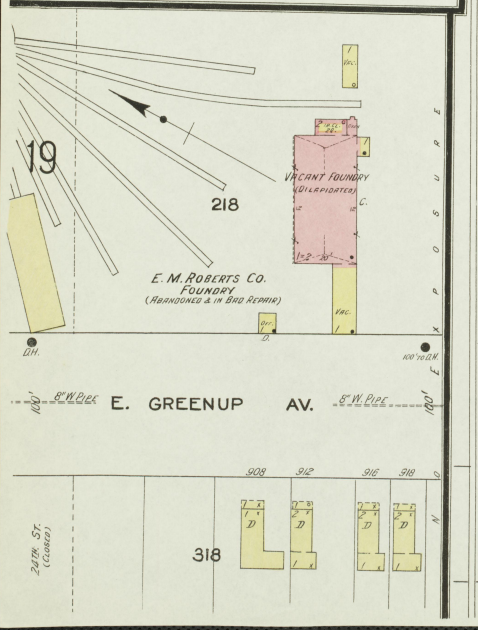
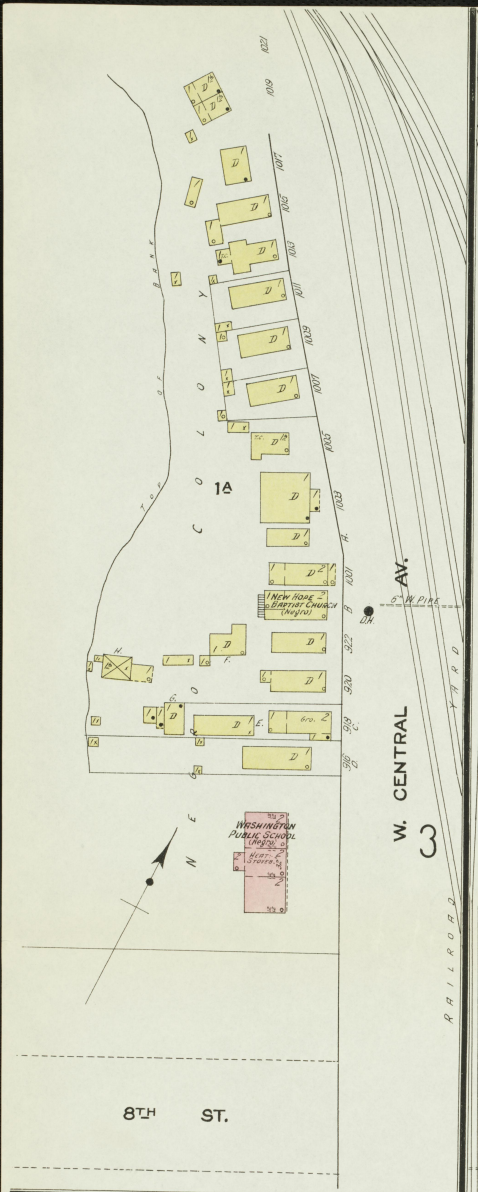
CAPACITY 100 BBL'S PER 24 HOURS.
 NO. 1 WHEAT, NO. 2 STEAM, LIGHTS, ELEC. I.P. & OIL LANTERNS.
 HAND & AUTOMATIC SIEVES, BRUSHES, PULVERISERS & PULPS &
 CHEMICALS, ESTIMATORS, BOSTON, ILEX, CAP. 3000 BBL'S.
 MACHINERY - 1st FLOOR - 1-1/2 ROLL, 3 HIGH CON. MILL, 1 DOUBLE S'120,
 CON. MILL, 2 PRESENT, 3 BRUISE STAMPS OF WILLS,
 2nd FLOOR - 2 ROLLERS, 1 SIFTER, 1 BRUISE, 1 FLUID,
 2 ROUND PELLETS, 1 CRACK, 1 MILLING, 1 MILLING,
 1-1/2 BRUISE, 1-1/2 BRUISE, 1-1/2 BRUISE, 1-1/2 BRUISE,
 4th FLOOR - 1 W. H. SCHWABER, 1 SCOURER, 2 BOLLERS, 1 FEED
 BELT.
 ELEVATOR - 1 WHEAT CLEANER, 1 CORN SHELTER, 1 POWER SCOP.



ASHLAND IRON & MINING CO. INC.

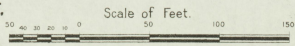
NO. 1 DETONATION BOY & MOOT, NO. 1 BOY, NO. 1 BOY
 WINDMILL, PUMPS, 1 STEAM, 1 OIL, 1 OIL, 1 OIL,
 & GAS, 1 OIL, 1 OIL, 1 OIL, 1 OIL, 1 OIL,
 SWAMP, 1 OIL, 1 OIL, 1 OIL, 1 OIL, 1 OIL,
 COST NO. 1 OIL, 1 OIL, 1 OIL, 1 OIL, 1 OIL,
 PRICE, FROM 1 OIL, 1 OIL, 1 OIL, 1 OIL,
 FURNACE, ONE, NO. 1 OIL, 1 OIL, 1 OIL.



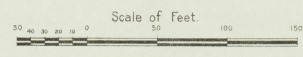
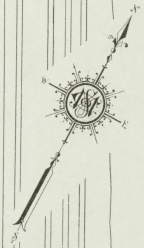
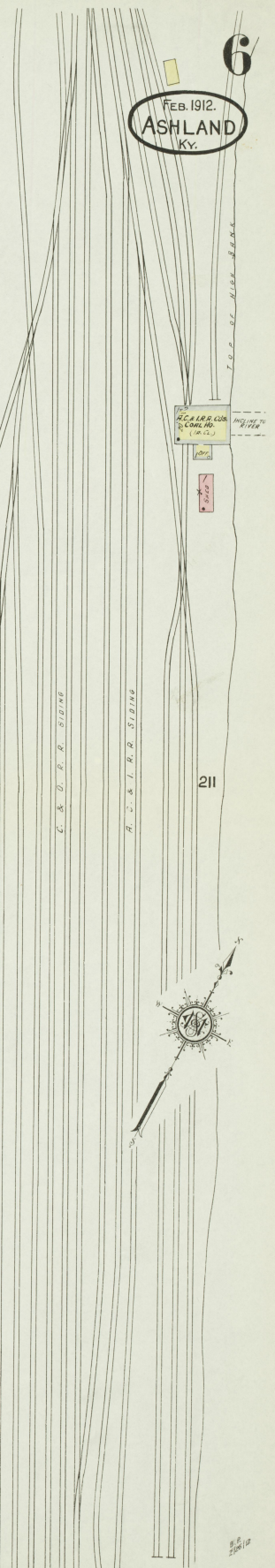
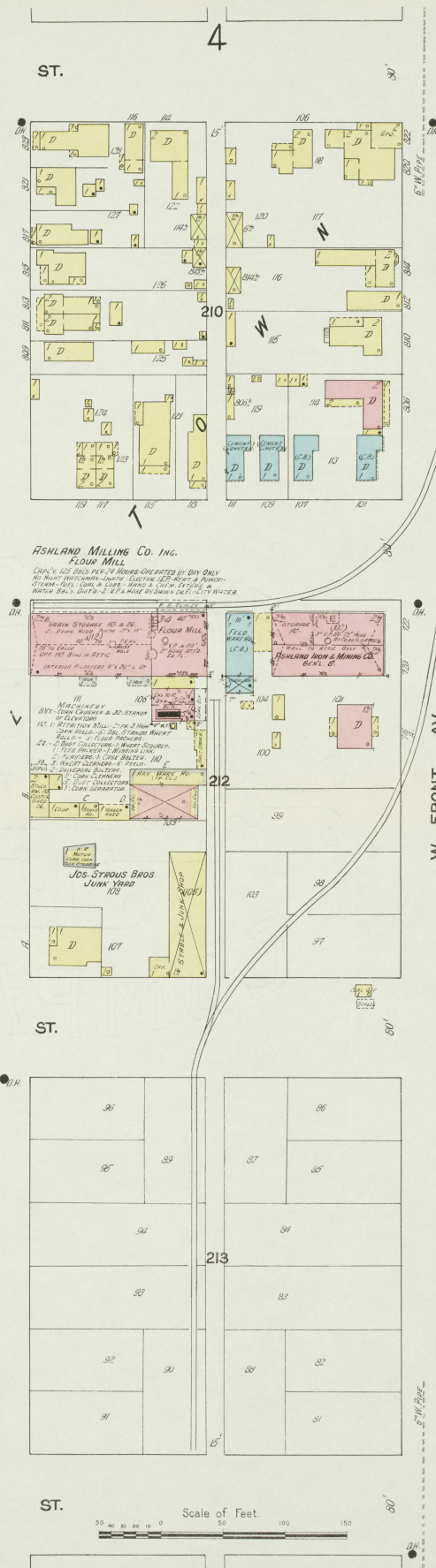


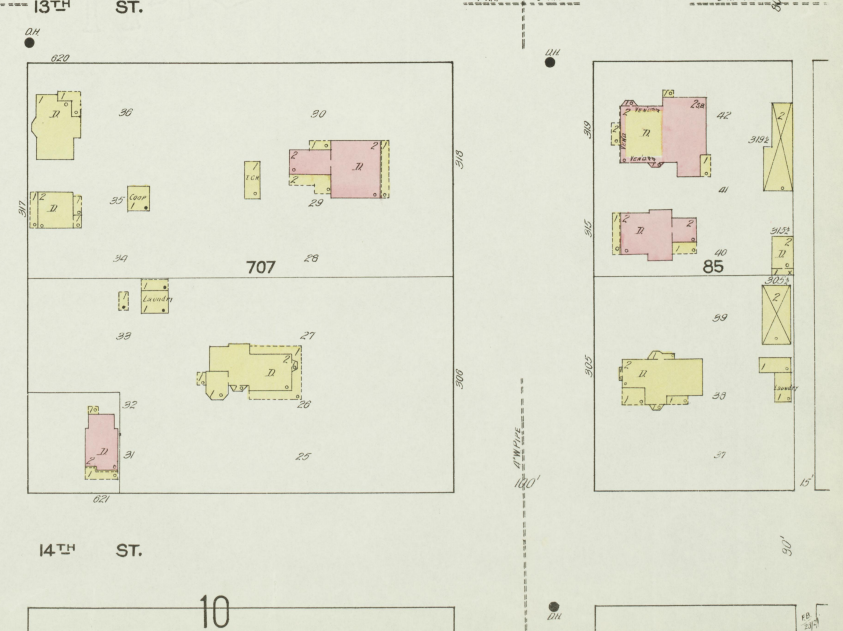
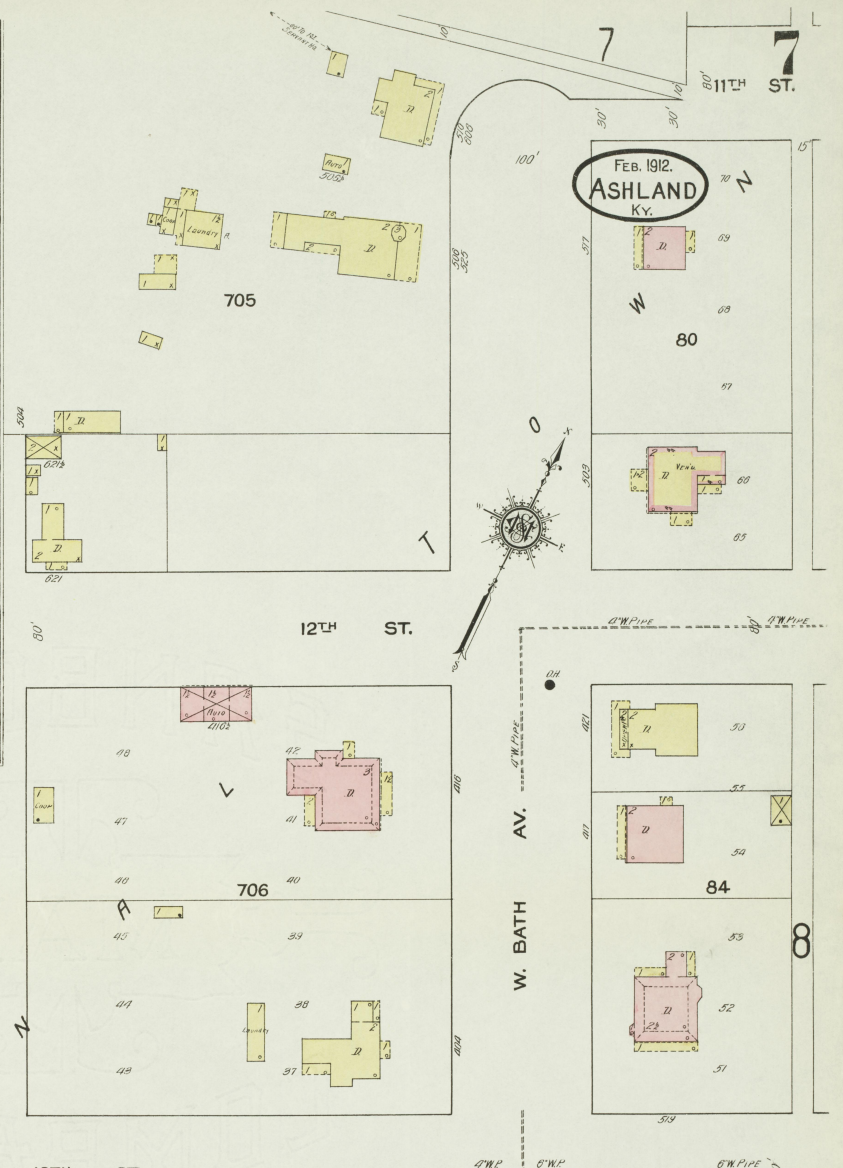
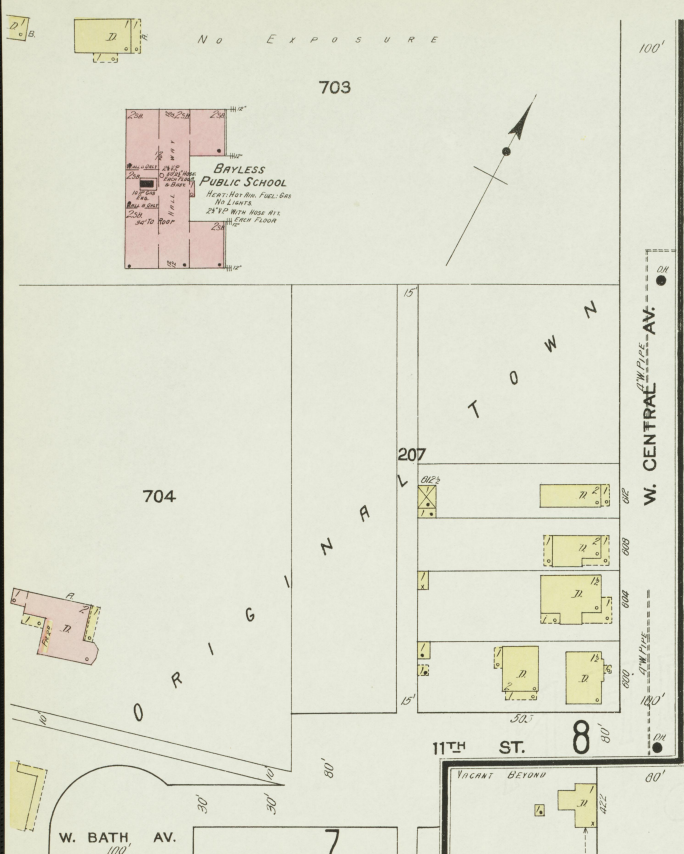
Feb. 1912.
ASHLAND
Ky.

5



FEB. 1912.
ASHLAND
Ky.





7

5

FEB. 1912.
ASHLAND
KY.

11TH ST.

12TH ST.

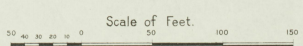
13TH ST.

14TH ST.

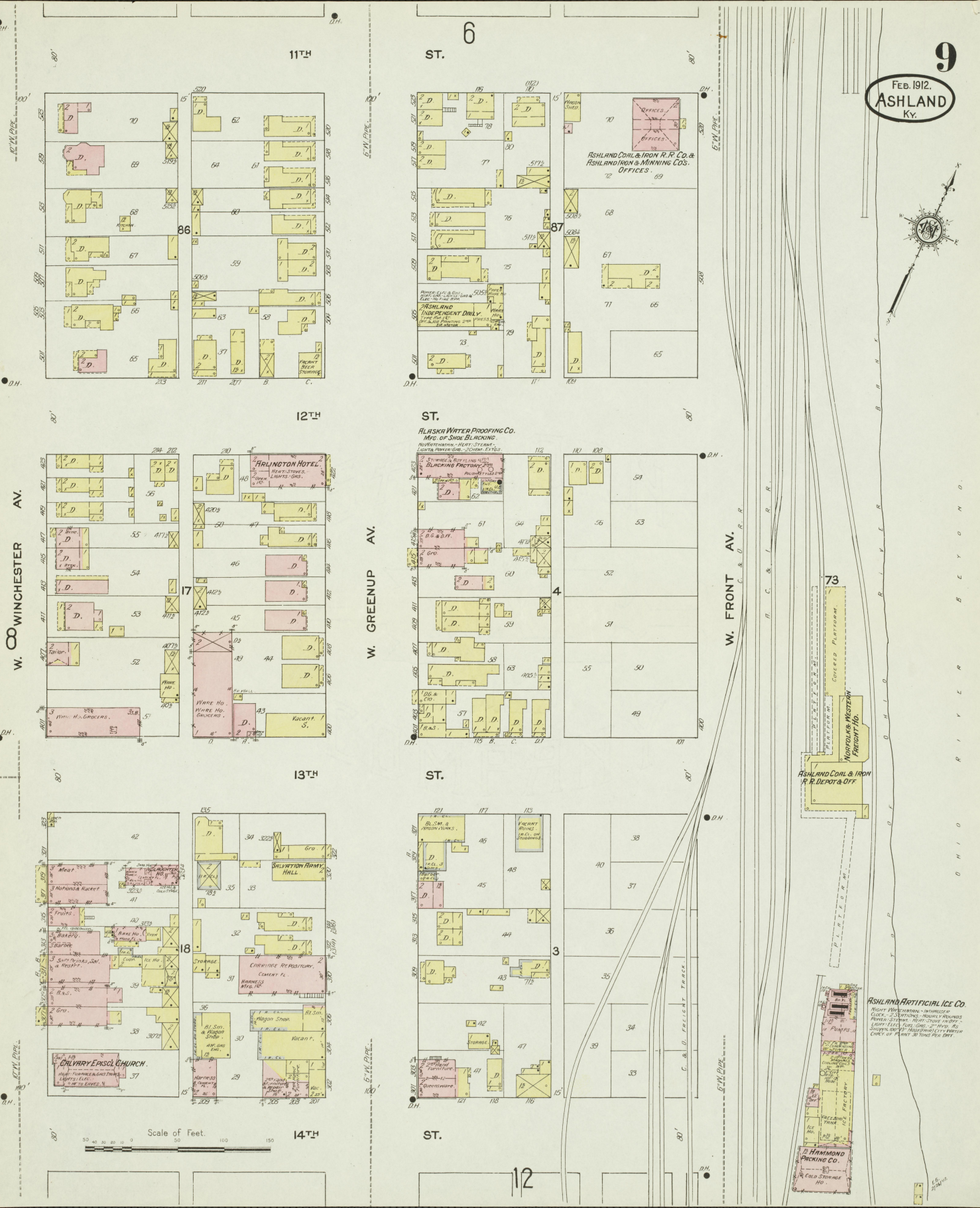
W. CENTRAL AV.

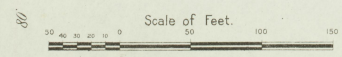
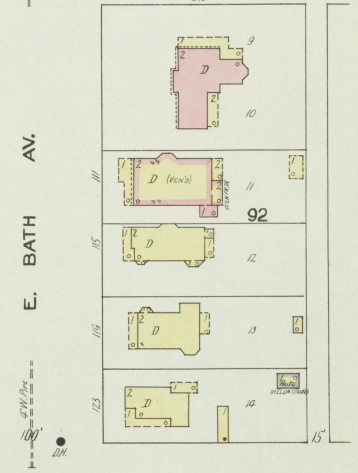
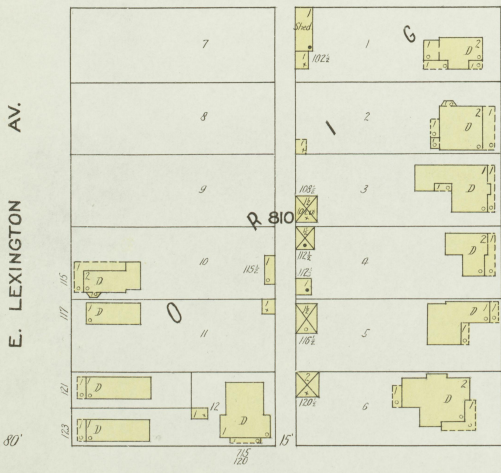
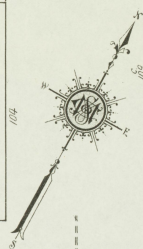
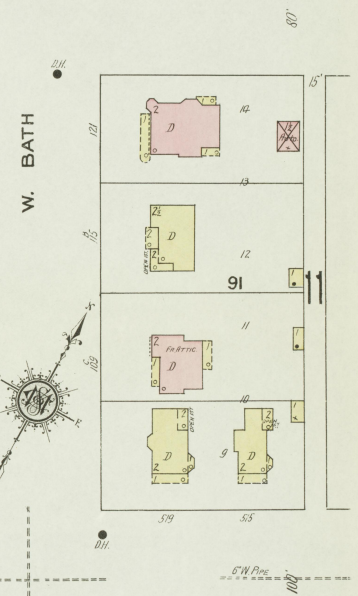
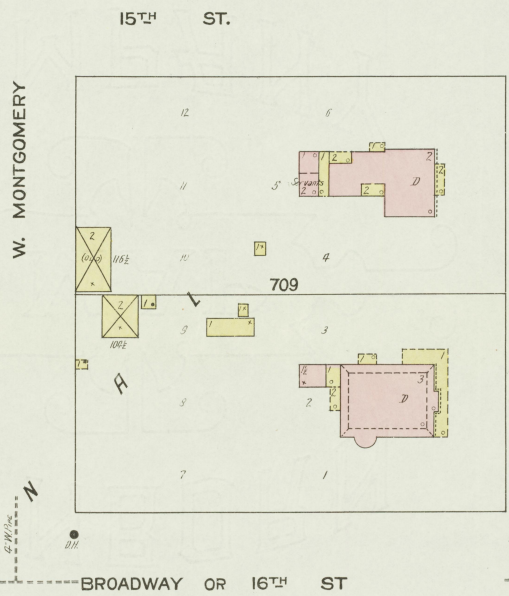
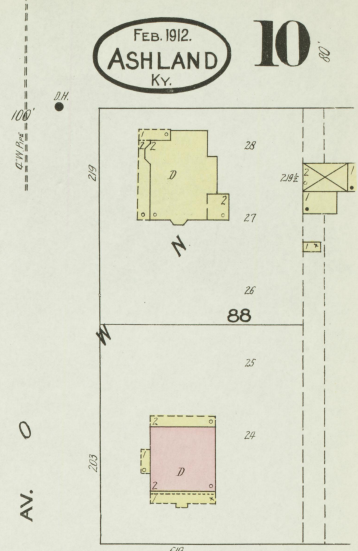
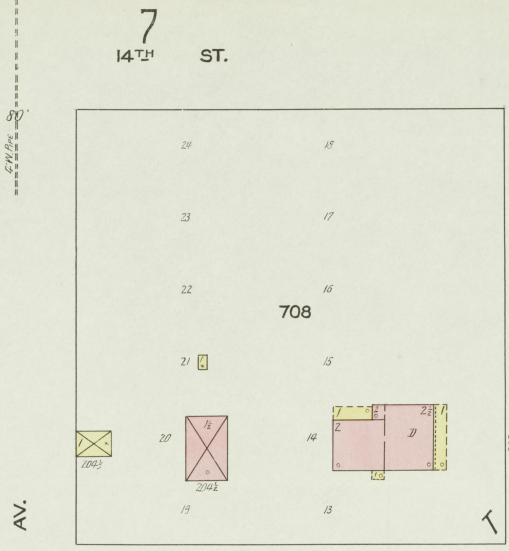
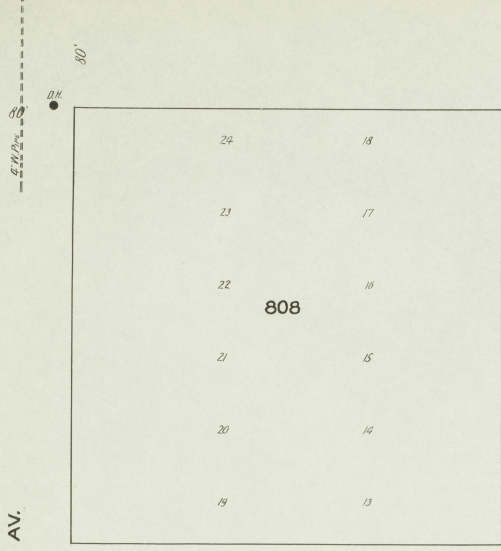
W. CARTER AV.

W. WINCHESTER AV.



11





PARK OR 17TH ST.



FEB. 1912.
ASHLAND
KY.

8
14TH ST.

15TH ST.

BROADWAY OR 16TH ST

14
PARK OR 17TH ST.

AV.

W. CENTRAL

E. CENTRAL AV.

AV.

W. CARTER

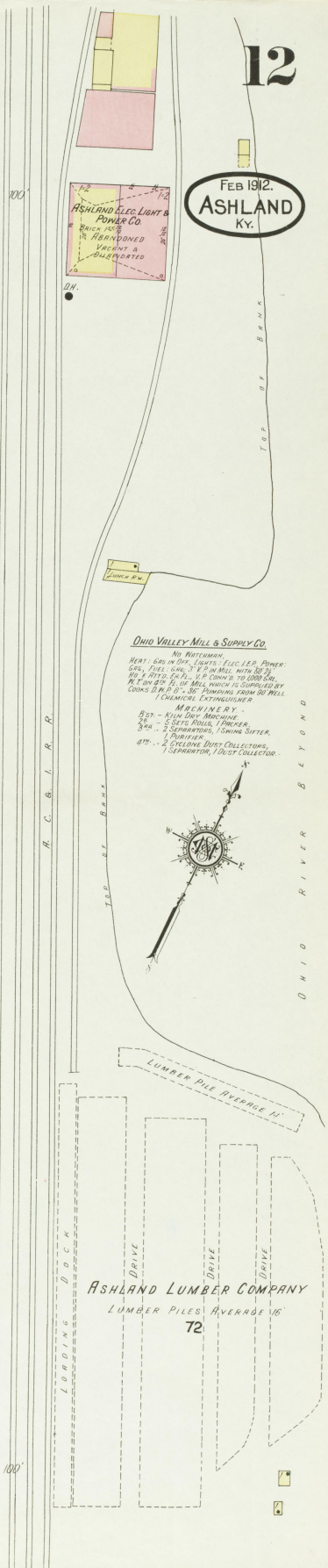
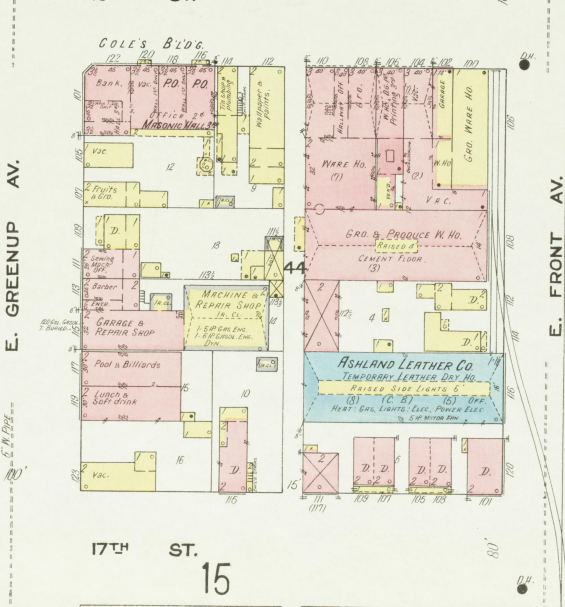
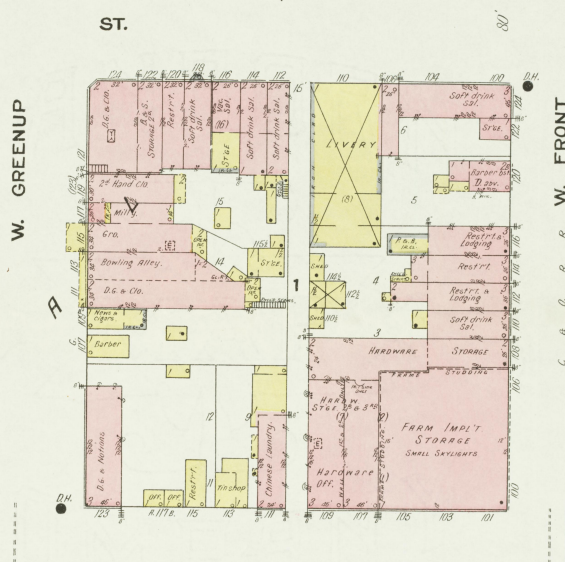
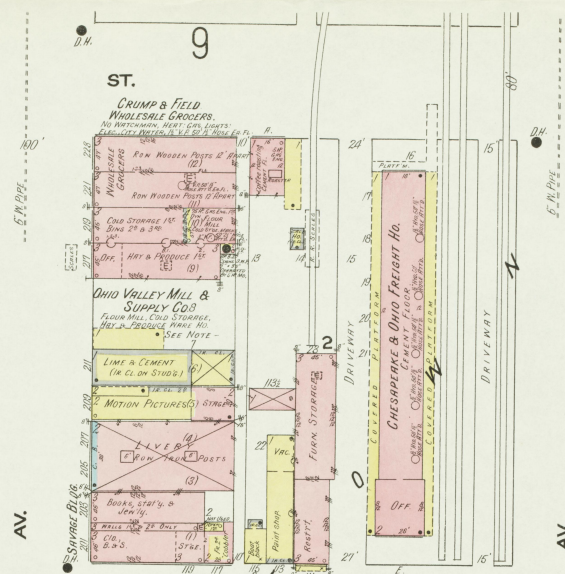
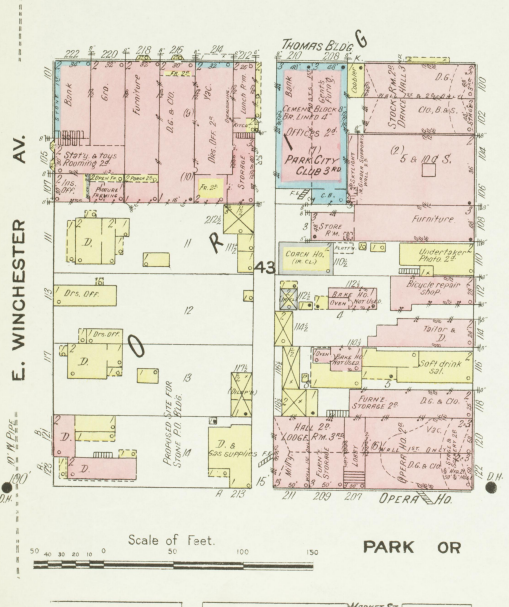
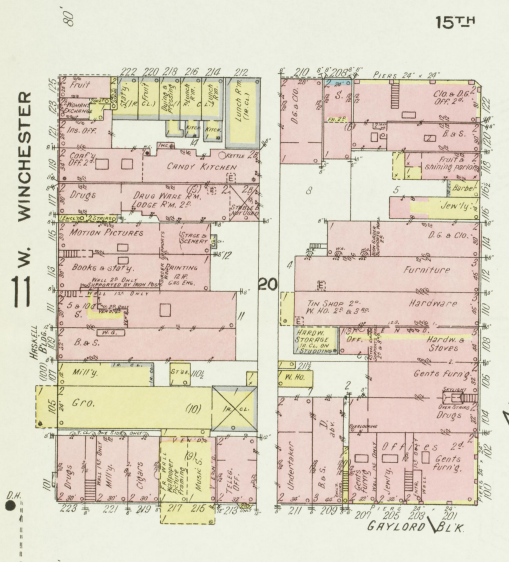
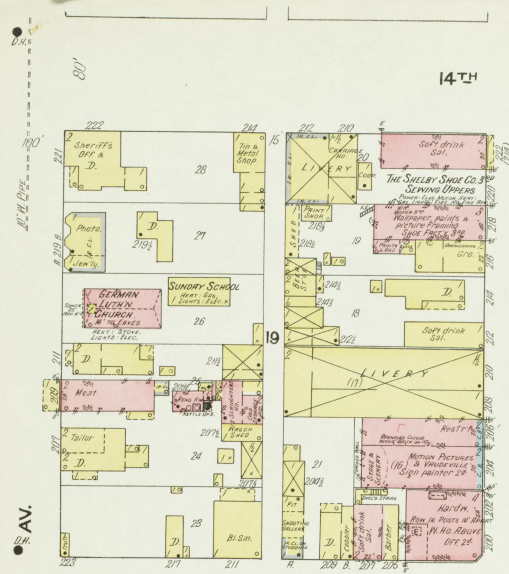
E. CARTER AV.

AV.

W. WINCHESTER

E. WINCHESTER AV.

Scale of Feet.
0 50 100 150



FEB 1912.
ASHLAND
KY.

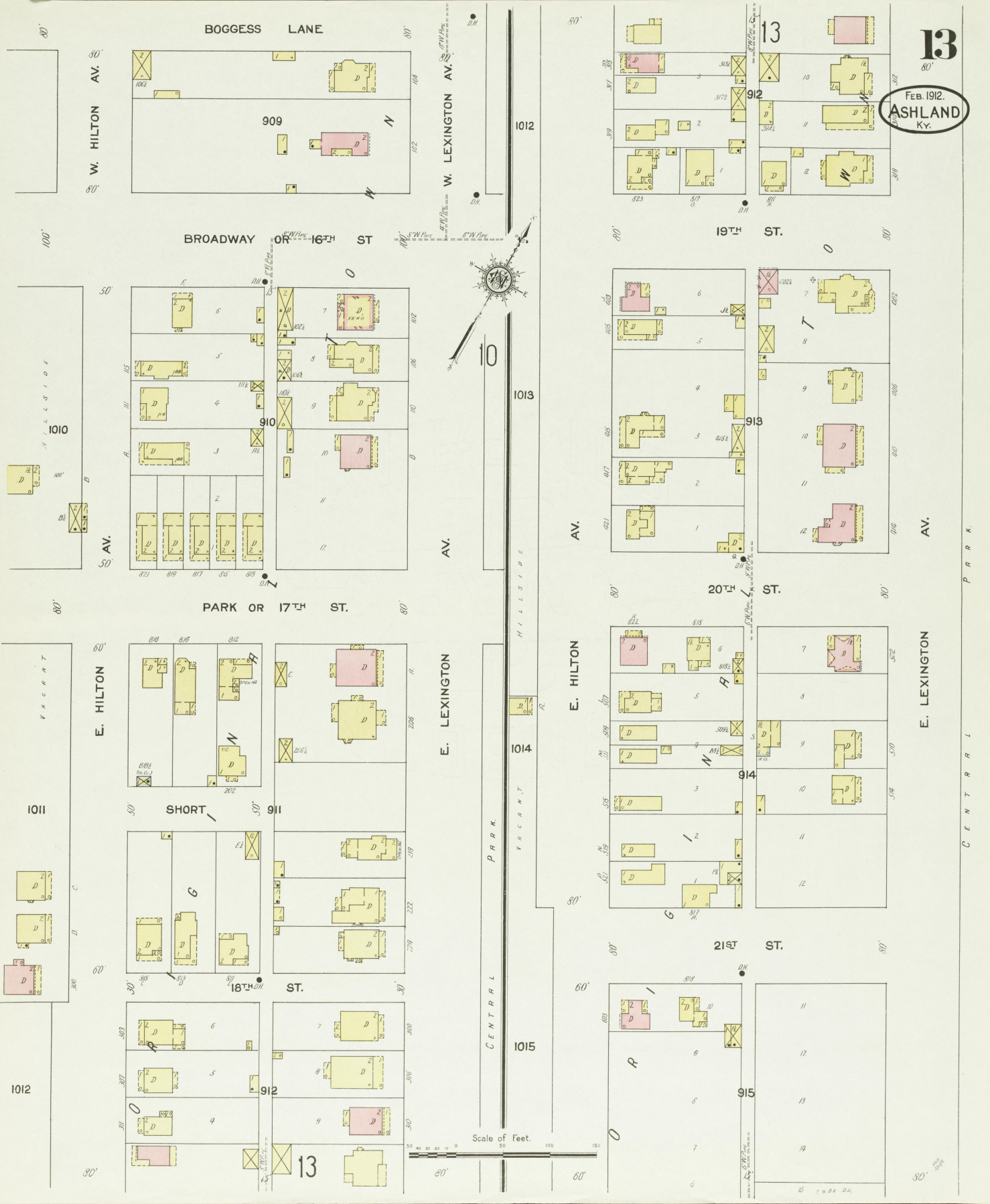
OHIO VALLEY MILL & SUPPLY CO.
NO NOTICEMAN
HEAT - 600 IN DPT. LIGHTS - 100-LED. DIMMER
GAS - FUEL - 1000 3" x 5" IN MILL WITH 300 2"
400 x 400 2" x 2" 1/2" x 1/2" IN MILL WITH 300 2"
1000 x 200 2" x 2" 1/2" x 1/2" IN MILL WHICH IS SUPPLIED BY
WOODS BROS. CO. 200 TANKING TANKS 300 WELLS
1 CHEMICAL EXTINGUISHER

MACHINERY -
800 - 1000 DPT. MACHINE
500 - 5 SETS PULVER, 1 PUMPER
500 - 5 SEPARATORS, 10000 LITER
200 - 1 PUMPER
200 - 1 CYCLONE DUST COLLECTOR
1 SEPARATOR, 1 DUST COLLECTOR



Scale of Feet.
0 50 100 150

13
Feb. 1912.
ASHLAND
Ky.

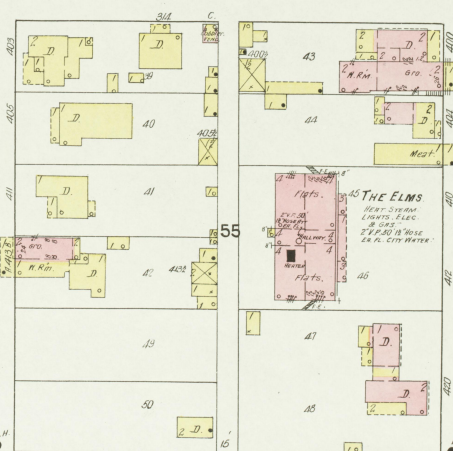
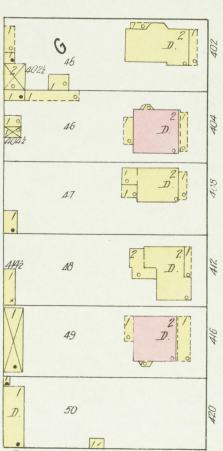
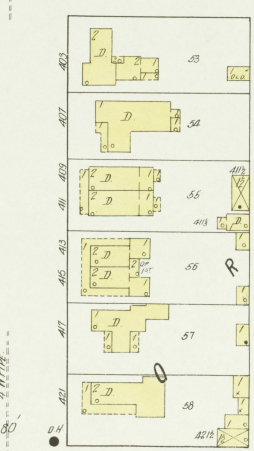
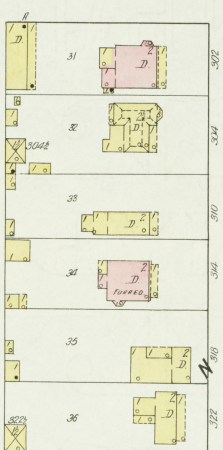
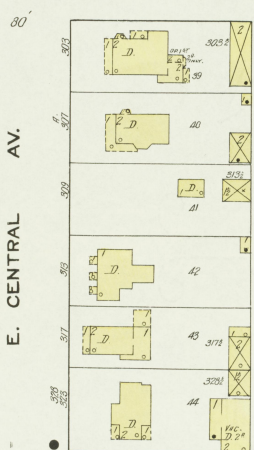
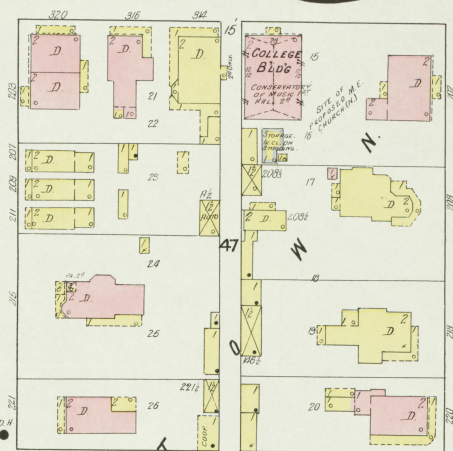
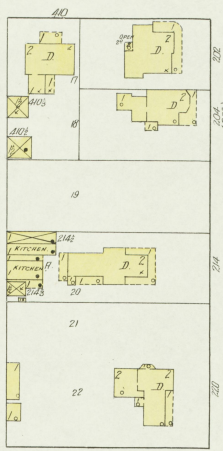
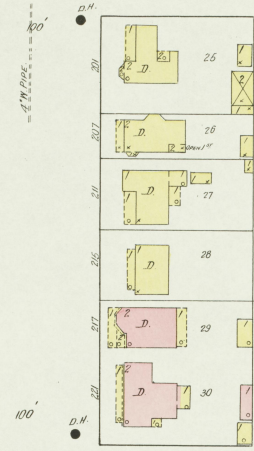


Scale of Feet.
0 20 40 60 80 100 120 140 160

FEB. 1912.
ASHLAND
Ky.

14

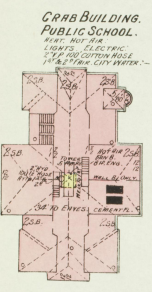
11
PARK OR 17TH ST.



20TH

16

ST.
Scale of Feet
0 50 100 150



CARR BUILDING.
PUBLIC SCHOOL.
PLAN, NOT TO SCALE.
LIGHTS, ELECTRIC,
E.T.C. FOR CARRIAGE HOUSE
IN S.E. CORNER. SEE MAP.

CENTRAL PARK



E. CENTRAL AV.

E. CARTER AV.

E. WINCHESTER AV.

100'

80'

80'

80'

80'

100'

80'

80'

80'

100'

80'

80'

80'

4" W. PIPE

D.H.

D.H.

D.H.

D.H.

4" W. PIPE

D.H.

D.H.

4" W. PIPE

D.H.

4" W. PIPE

D.H.

D.H.

4" W. PIPE

D.H.

94

95

96

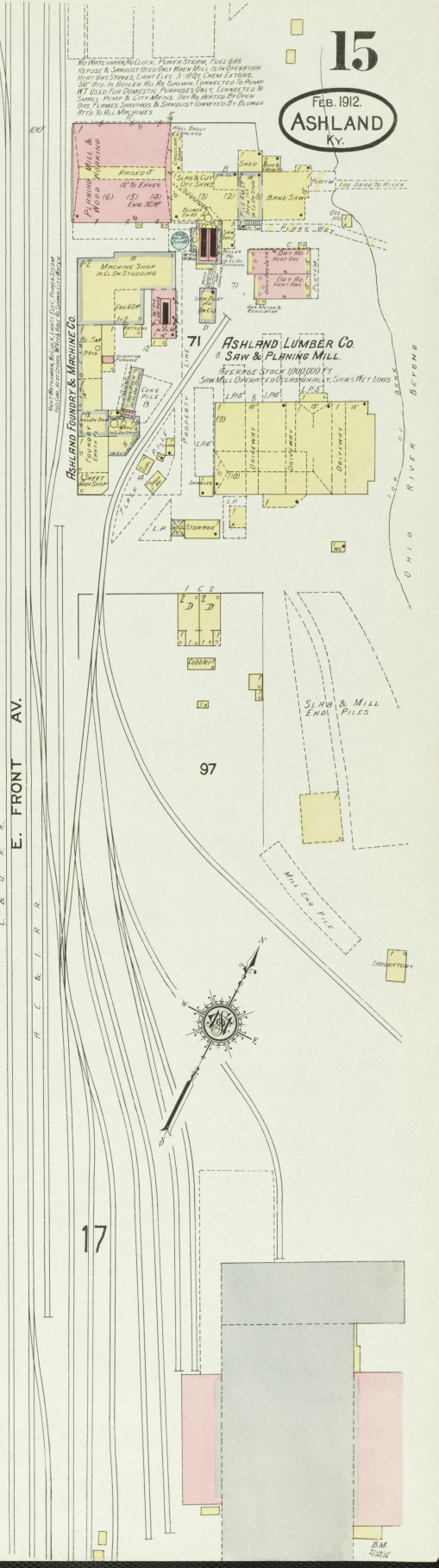
47

50

55

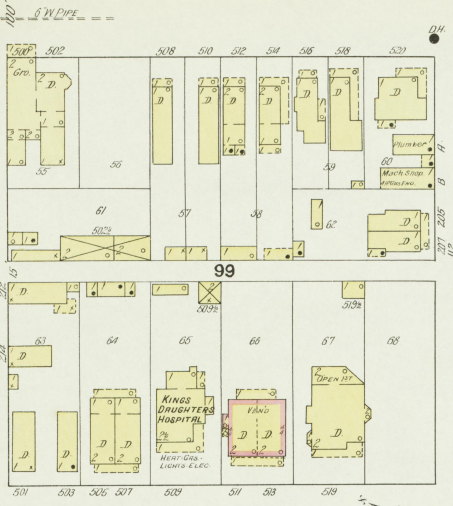
College Block
CONTRIBUTION OF MRS. J. H. HARRIS
TO THE COLLEGE OF
ASHLAND, KY.

THE ELMS
1 1/2 AC.
BEAT 31500
LIGHTS, ELEC.
E.T.C.
2 1/2 AC. IN 3000
2 1/2 AC. CITY WATER



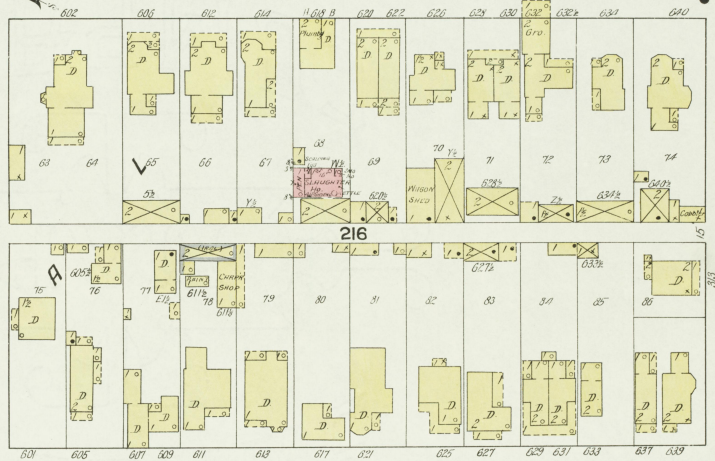
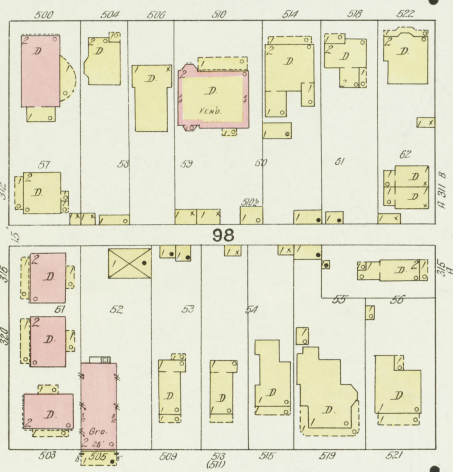
15

E. GREENUP 17 AV.



20TH ST.

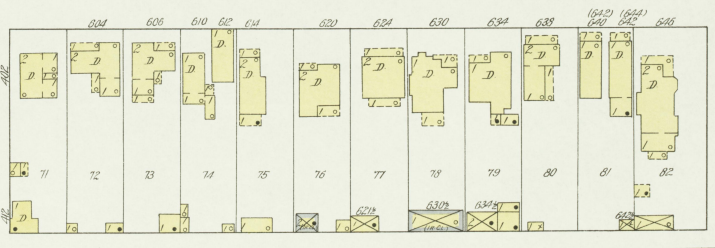
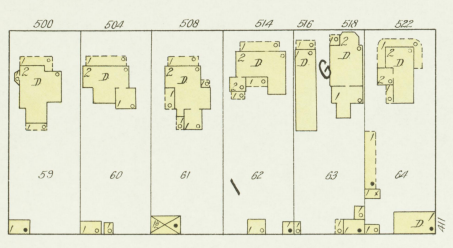
E. WINCHESTER AV.



19

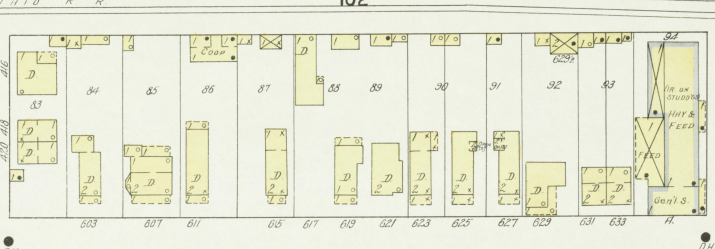
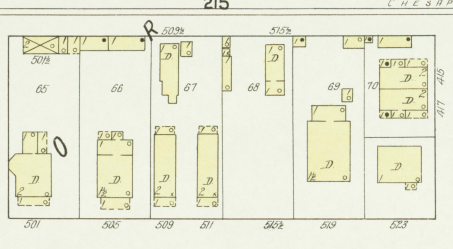
14

E. CARTER AV.

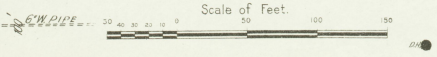
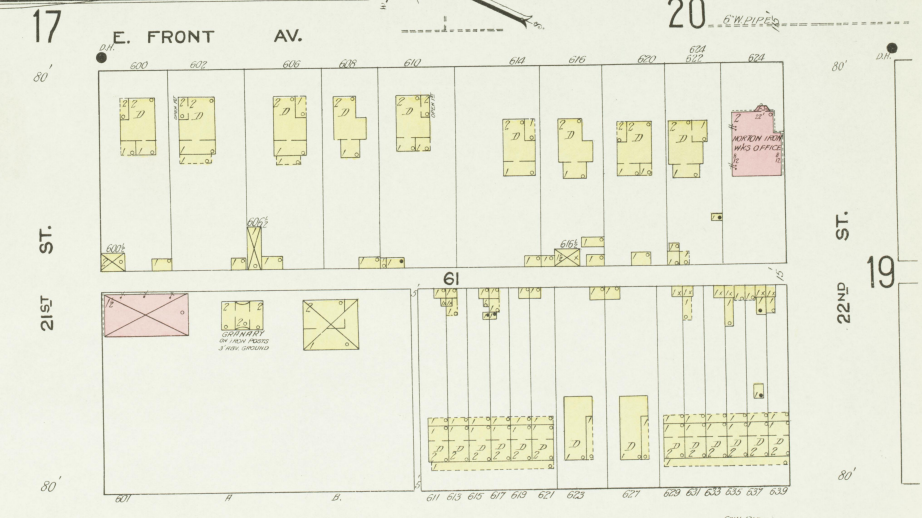
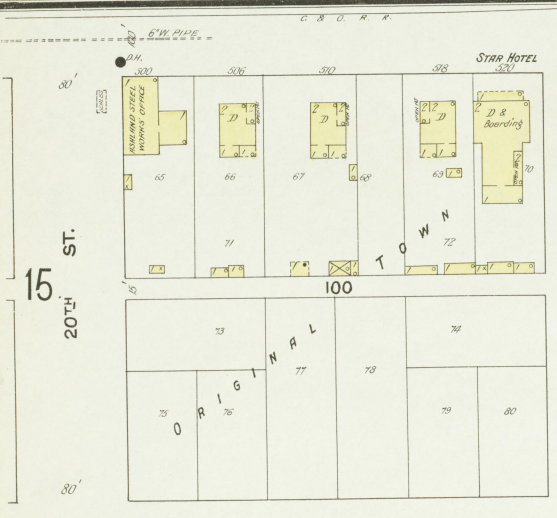
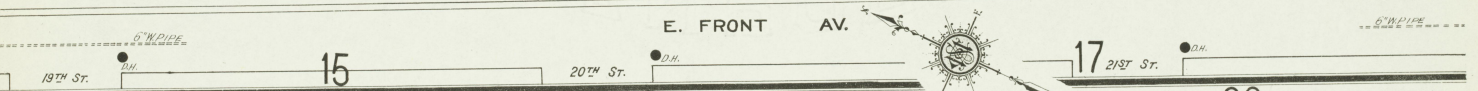
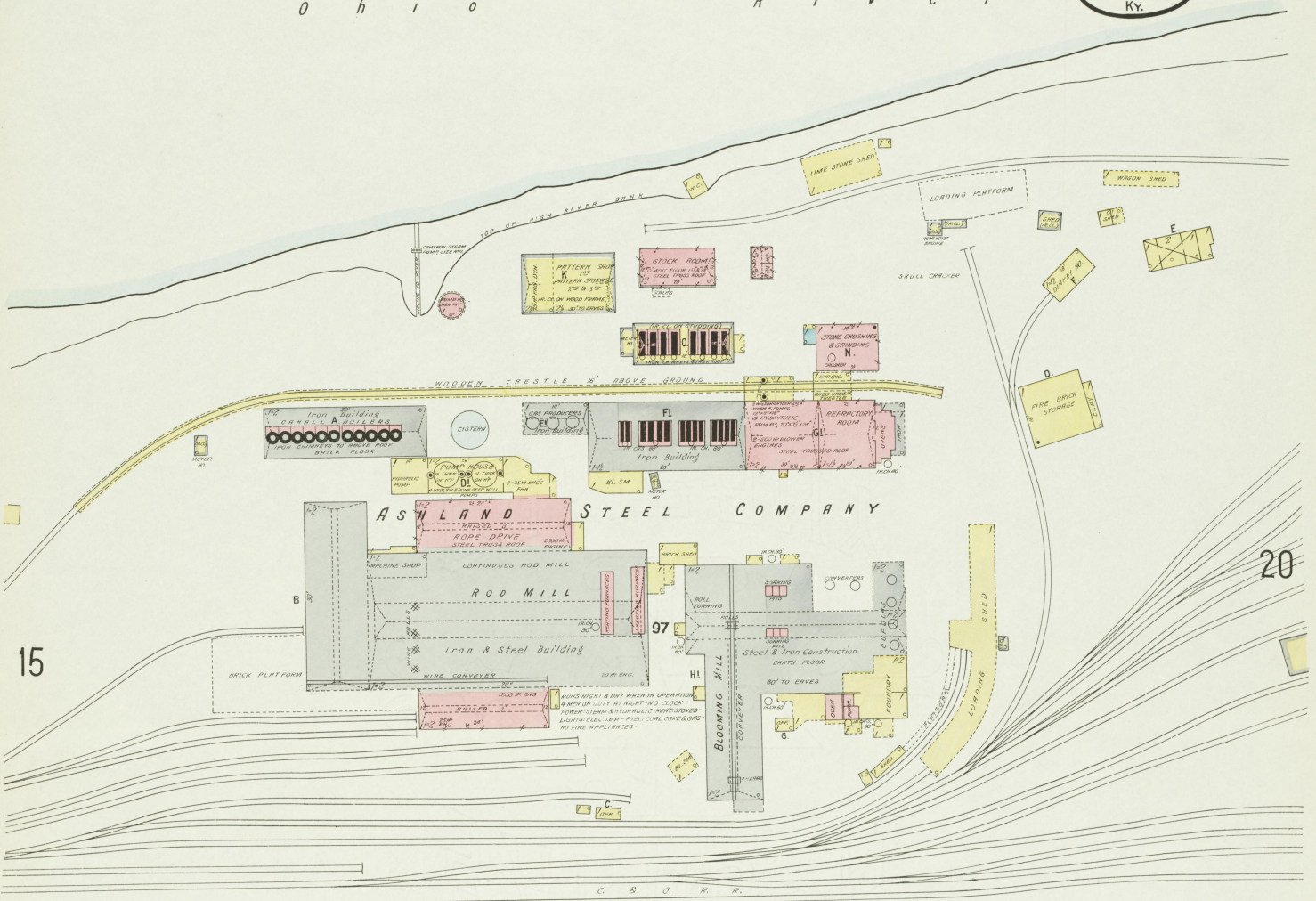


18

E. CENTRAL AV.



Scale of Feet. 50 100 150

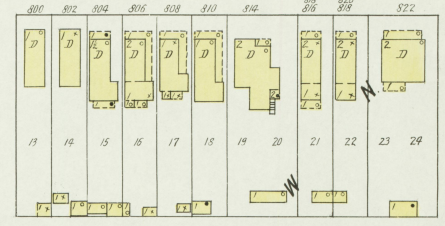
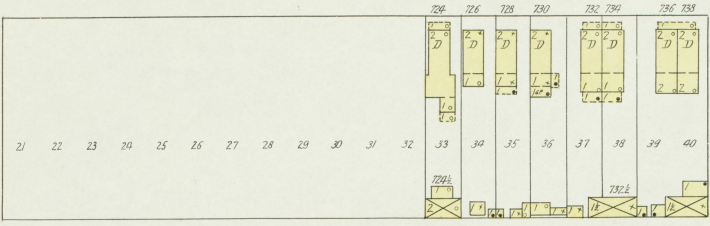


E. 16 GREENUP AV.

E. CARTER 19 AV.



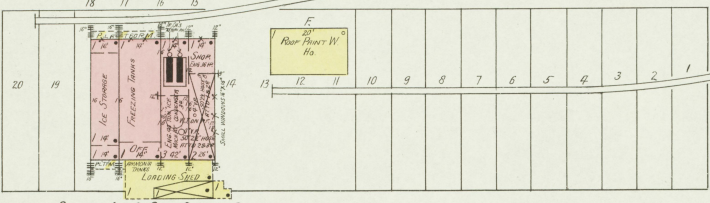
18



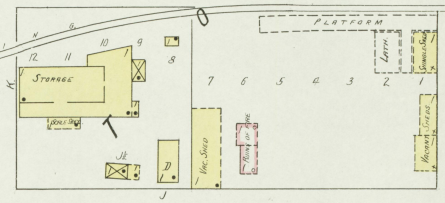
103 CHESAPEAKE ROAD 517

16

21



CRYSTAL ICE & COLD STORAGE CO. CREDITED DRY & AWAY IN SUMMER. 12 MONTHS. CAPACITY 200 TONS. THE DEP. 2x4 12' x 30' 21 HOLES. 45 TONS CONNECTED TO 2800 GALLON WORKS, DOWN ON ROAD 45' ABOVE GROUND. CITY WAREHOUSE.

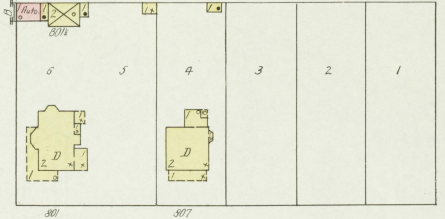
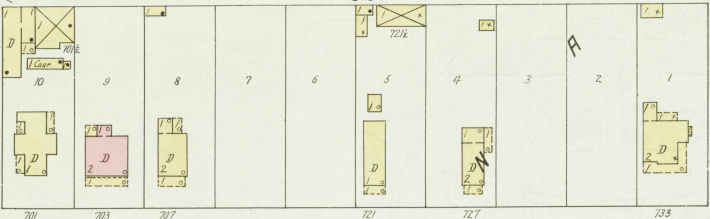
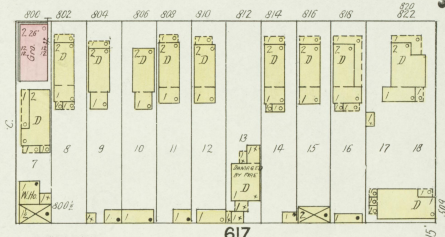
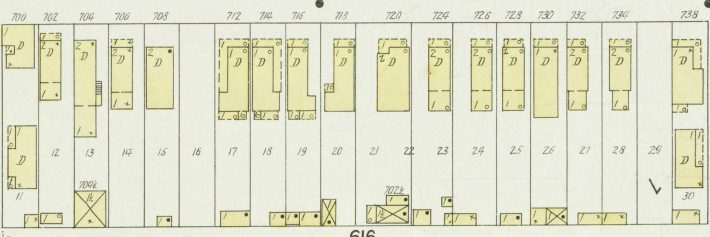


E. CENTRAL AV.

ST. 22ND

ST. 23RD

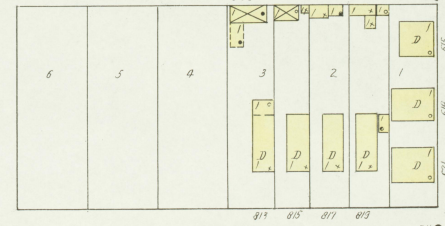
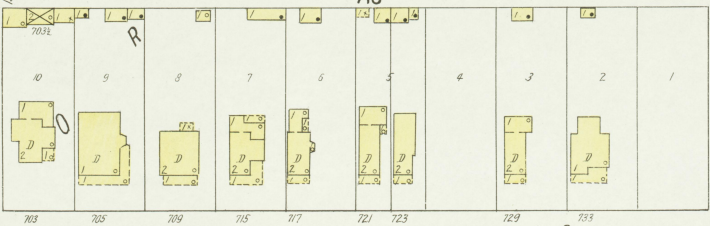
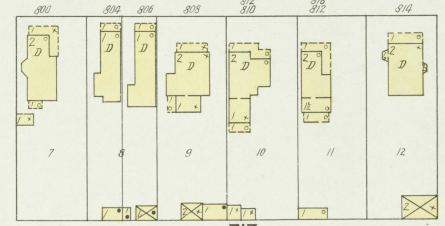
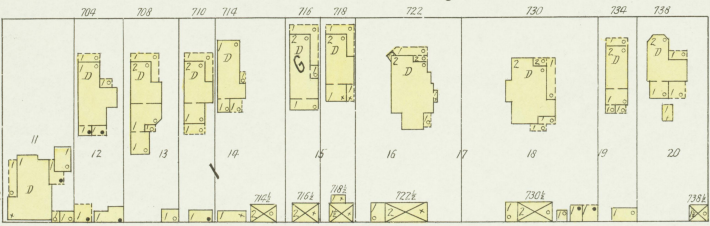
ST. 24TH



E. BATH AV.



CENTRAL



Scale of Feet. 0 50 100 150

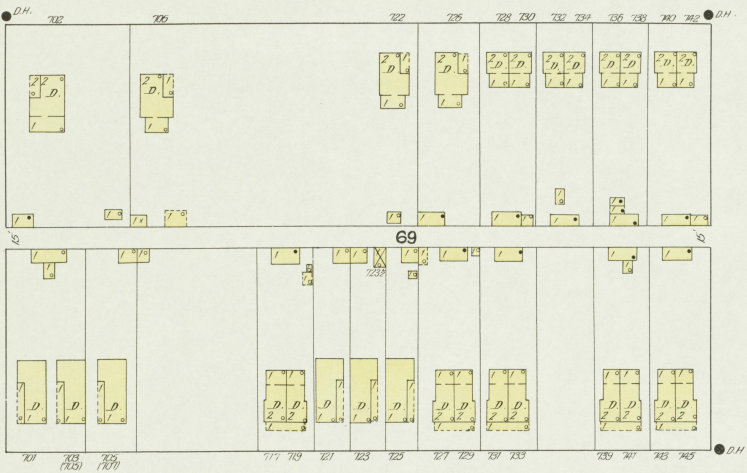
E. MONTGOMERY 24 AV.

CHESAPEAKE & OHIO R. R.

20

E. FRONT 6" N. PIPE

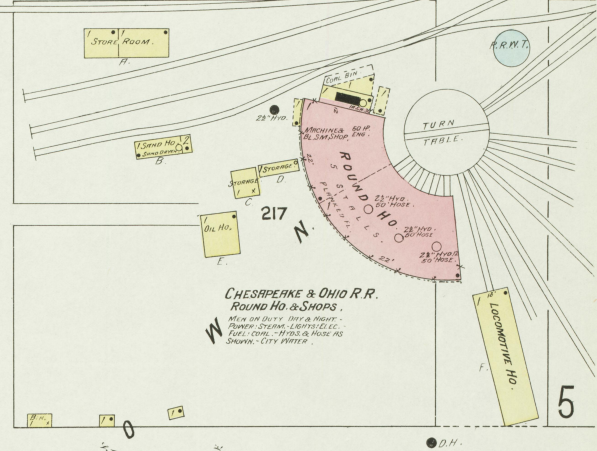
17



AV.

FEB. 1912. ASHLAND Ky.

19



E. GREENUP 6" N. PIPE

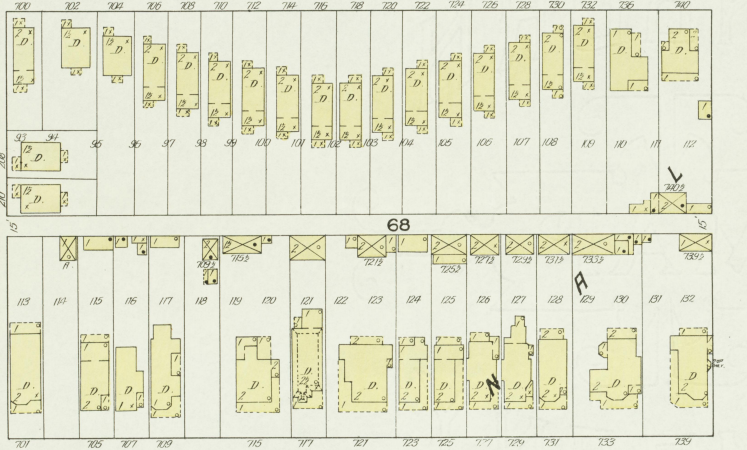
AV.



ST.

22 N.P.

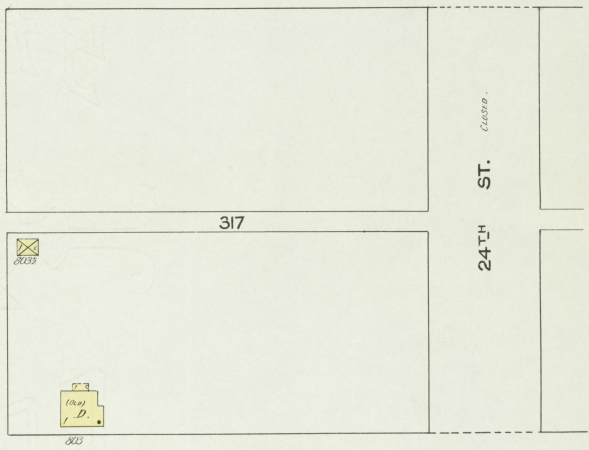
16



ST.

23 N.P.

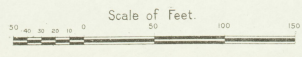
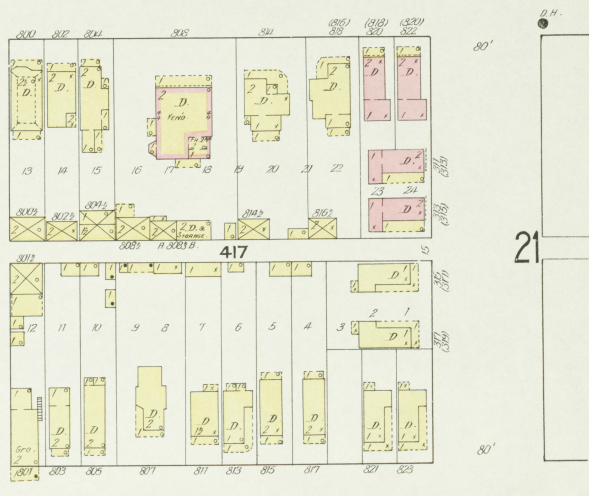
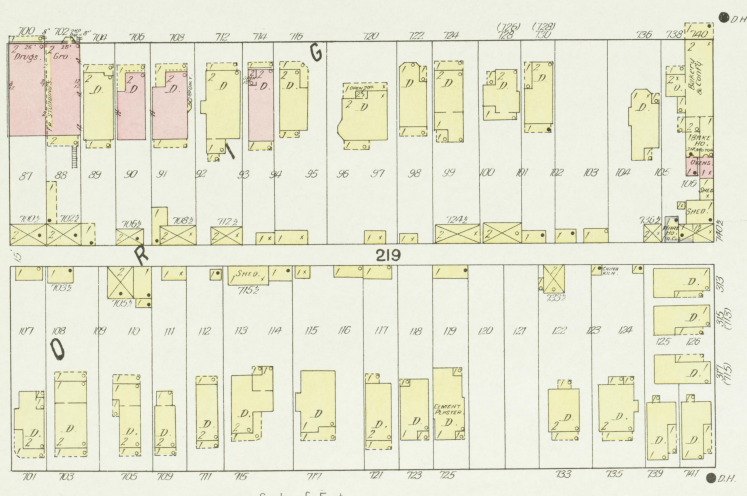
E. WINCHESTER 6" N. PIPE



ST.

21 N.P.

18

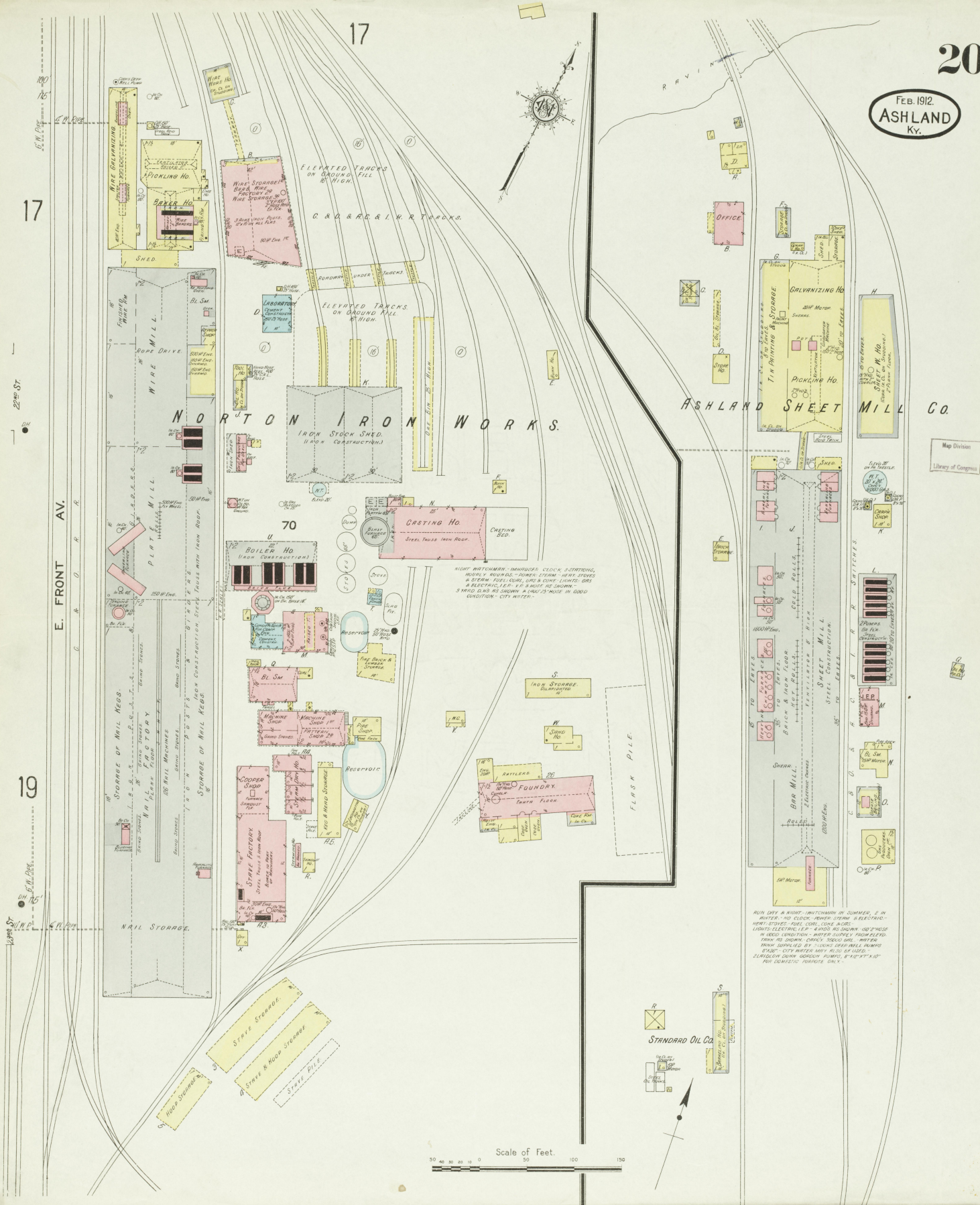


E. CARTER 18

AV.

21

E. FRONT AV.



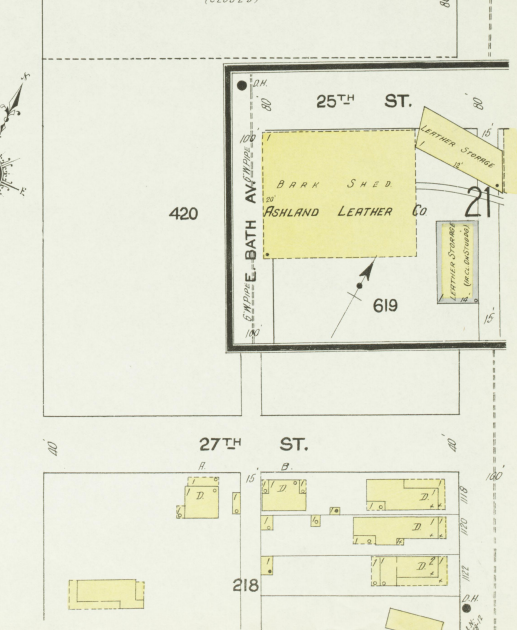
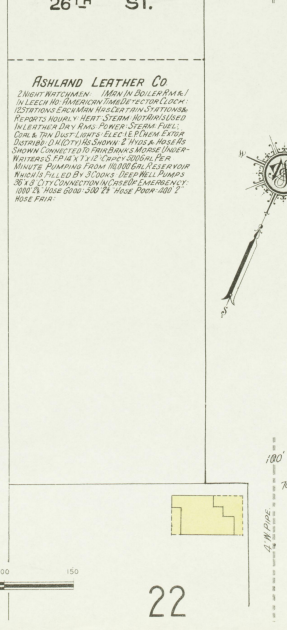
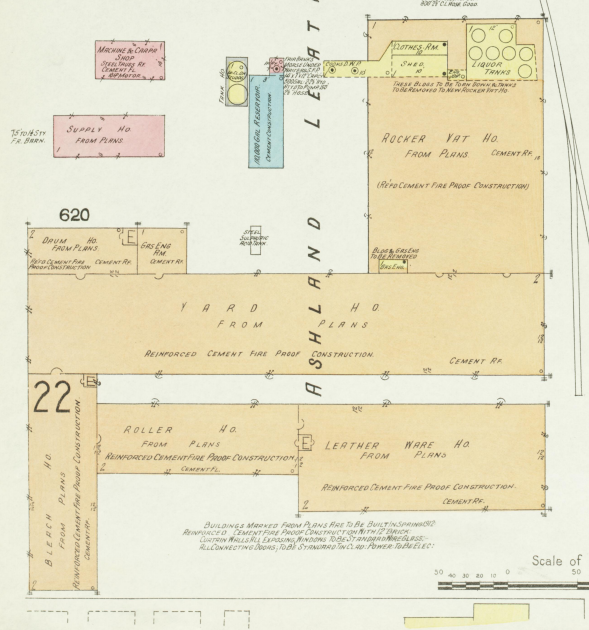
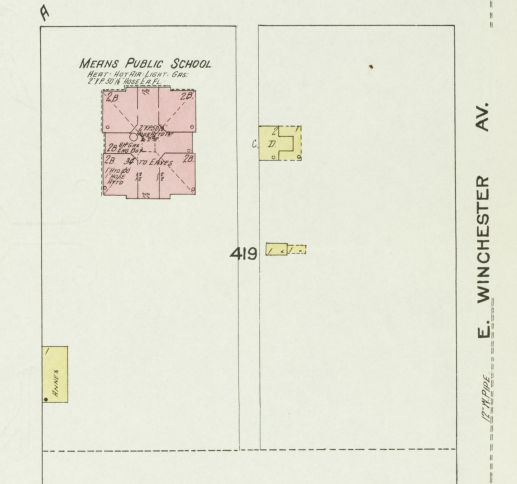
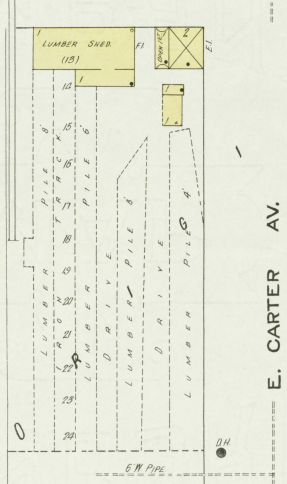
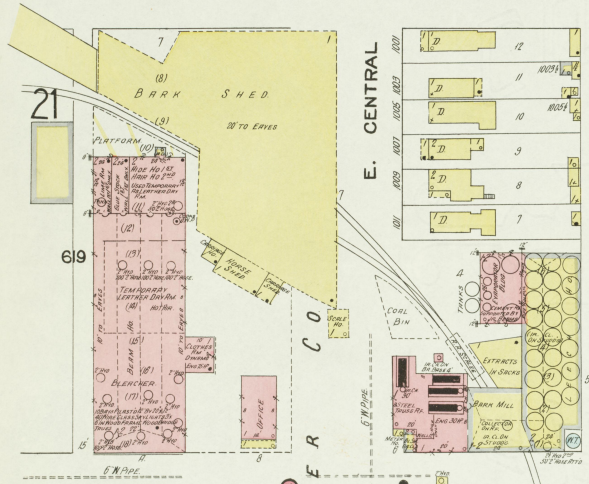
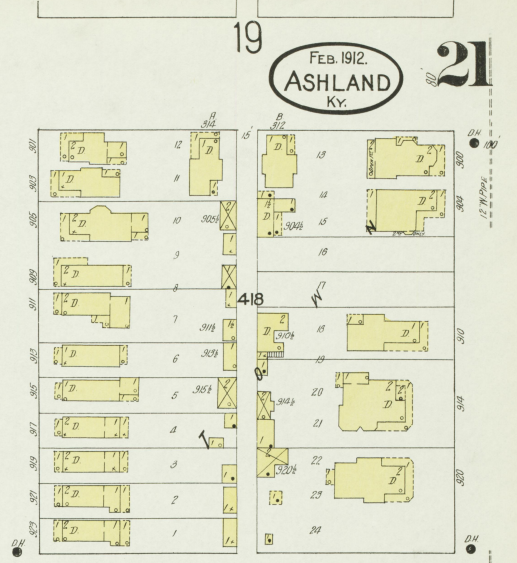
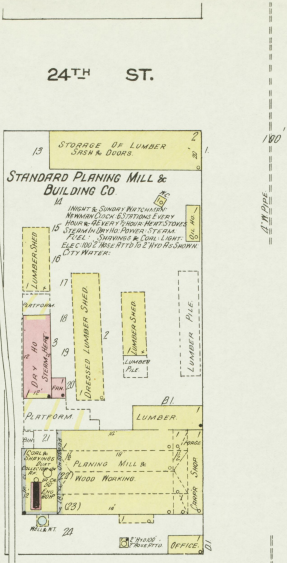
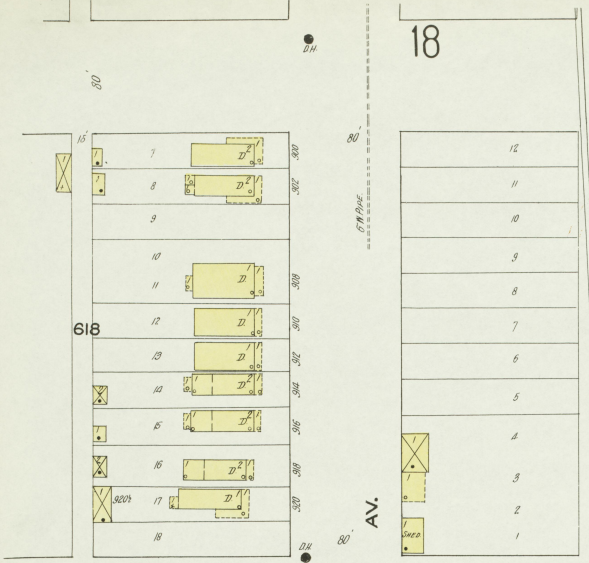
Scale of Feet. 0 20 40 60 80 100 120 140 160

RUN DAY & NIGHT - IN WINTER IN SUMMER 2 IN WINTER. NO CLOCK. POWER STEAM & ELECTRIC. HEAT STORES. GAS. COAL. OIL. GAS. WOOD. LIGHTS ELECTRIC. 1 P. - 4 WIDE AS SHOWN. 2 P. - 2 WIDE AS SHOWN. 3 P. - 2 WIDE AS SHOWN. 4 P. - 2 WIDE AS SHOWN. 5 P. - 2 WIDE AS SHOWN. 6 P. - 2 WIDE AS SHOWN. 7 P. - 2 WIDE AS SHOWN. 8 P. - 2 WIDE AS SHOWN. 9 P. - 2 WIDE AS SHOWN. 10 P. - 2 WIDE AS SHOWN. 11 P. - 2 WIDE AS SHOWN. 12 P. - 2 WIDE AS SHOWN. 13 P. - 2 WIDE AS SHOWN. 14 P. - 2 WIDE AS SHOWN. 15 P. - 2 WIDE AS SHOWN. 16 P. - 2 WIDE AS SHOWN. 17 P. - 2 WIDE AS SHOWN. 18 P. - 2 WIDE AS SHOWN. 19 P. - 2 WIDE AS SHOWN. 20 P. - 2 WIDE AS SHOWN. 21 P. - 2 WIDE AS SHOWN. 22 P. - 2 WIDE AS SHOWN. 23 P. - 2 WIDE AS SHOWN. 24 P. - 2 WIDE AS SHOWN. 25 P. - 2 WIDE AS SHOWN. 26 P. - 2 WIDE AS SHOWN. 27 P. - 2 WIDE AS SHOWN. 28 P. - 2 WIDE AS SHOWN. 29 P. - 2 WIDE AS SHOWN. 30 P. - 2 WIDE AS SHOWN. 31 P. - 2 WIDE AS SHOWN. 32 P. - 2 WIDE AS SHOWN. 33 P. - 2 WIDE AS SHOWN. 34 P. - 2 WIDE AS SHOWN. 35 P. - 2 WIDE AS SHOWN. 36 P. - 2 WIDE AS SHOWN. 37 P. - 2 WIDE AS SHOWN. 38 P. - 2 WIDE AS SHOWN. 39 P. - 2 WIDE AS SHOWN. 40 P. - 2 WIDE AS SHOWN. 41 P. - 2 WIDE AS SHOWN. 42 P. - 2 WIDE AS SHOWN. 43 P. - 2 WIDE AS SHOWN. 44 P. - 2 WIDE AS SHOWN. 45 P. - 2 WIDE AS SHOWN. 46 P. - 2 WIDE AS SHOWN. 47 P. - 2 WIDE AS SHOWN. 48 P. - 2 WIDE AS SHOWN. 49 P. - 2 WIDE AS SHOWN. 50 P. - 2 WIDE AS SHOWN. 51 P. - 2 WIDE AS SHOWN. 52 P. - 2 WIDE AS SHOWN. 53 P. - 2 WIDE AS SHOWN. 54 P. - 2 WIDE AS SHOWN. 55 P. - 2 WIDE AS SHOWN. 56 P. - 2 WIDE AS SHOWN. 57 P. - 2 WIDE AS SHOWN. 58 P. - 2 WIDE AS SHOWN. 59 P. - 2 WIDE AS SHOWN. 60 P. - 2 WIDE AS SHOWN. 61 P. - 2 WIDE AS SHOWN. 62 P. - 2 WIDE AS SHOWN. 63 P. - 2 WIDE AS SHOWN. 64 P. - 2 WIDE AS SHOWN. 65 P. - 2 WIDE AS SHOWN. 66 P. - 2 WIDE AS SHOWN. 67 P. - 2 WIDE AS SHOWN. 68 P. - 2 WIDE AS SHOWN. 69 P. - 2 WIDE AS SHOWN. 70 P. - 2 WIDE AS SHOWN. 71 P. - 2 WIDE AS SHOWN. 72 P. - 2 WIDE AS SHOWN. 73 P. - 2 WIDE AS SHOWN. 74 P. - 2 WIDE AS SHOWN. 75 P. - 2 WIDE AS SHOWN. 76 P. - 2 WIDE AS SHOWN. 77 P. - 2 WIDE AS SHOWN. 78 P. - 2 WIDE AS SHOWN. 79 P. - 2 WIDE AS SHOWN. 80 P. - 2 WIDE AS SHOWN. 81 P. - 2 WIDE AS SHOWN. 82 P. - 2 WIDE AS SHOWN. 83 P. - 2 WIDE AS SHOWN. 84 P. - 2 WIDE AS SHOWN. 85 P. - 2 WIDE AS SHOWN. 86 P. - 2 WIDE AS SHOWN. 87 P. - 2 WIDE AS SHOWN. 88 P. - 2 WIDE AS SHOWN. 89 P. - 2 WIDE AS SHOWN. 90 P. - 2 WIDE AS SHOWN. 91 P. - 2 WIDE AS SHOWN. 92 P. - 2 WIDE AS SHOWN. 93 P. - 2 WIDE AS SHOWN. 94 P. - 2 WIDE AS SHOWN. 95 P. - 2 WIDE AS SHOWN. 96 P. - 2 WIDE AS SHOWN. 97 P. - 2 WIDE AS SHOWN. 98 P. - 2 WIDE AS SHOWN. 99 P. - 2 WIDE AS SHOWN. 100 P. - 2 WIDE AS SHOWN.

200' FROM MILL BLOB TO OHIO RIVER.

Map Division Library of Congress

STANDARD OIL CO.

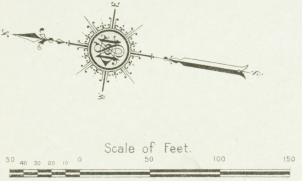
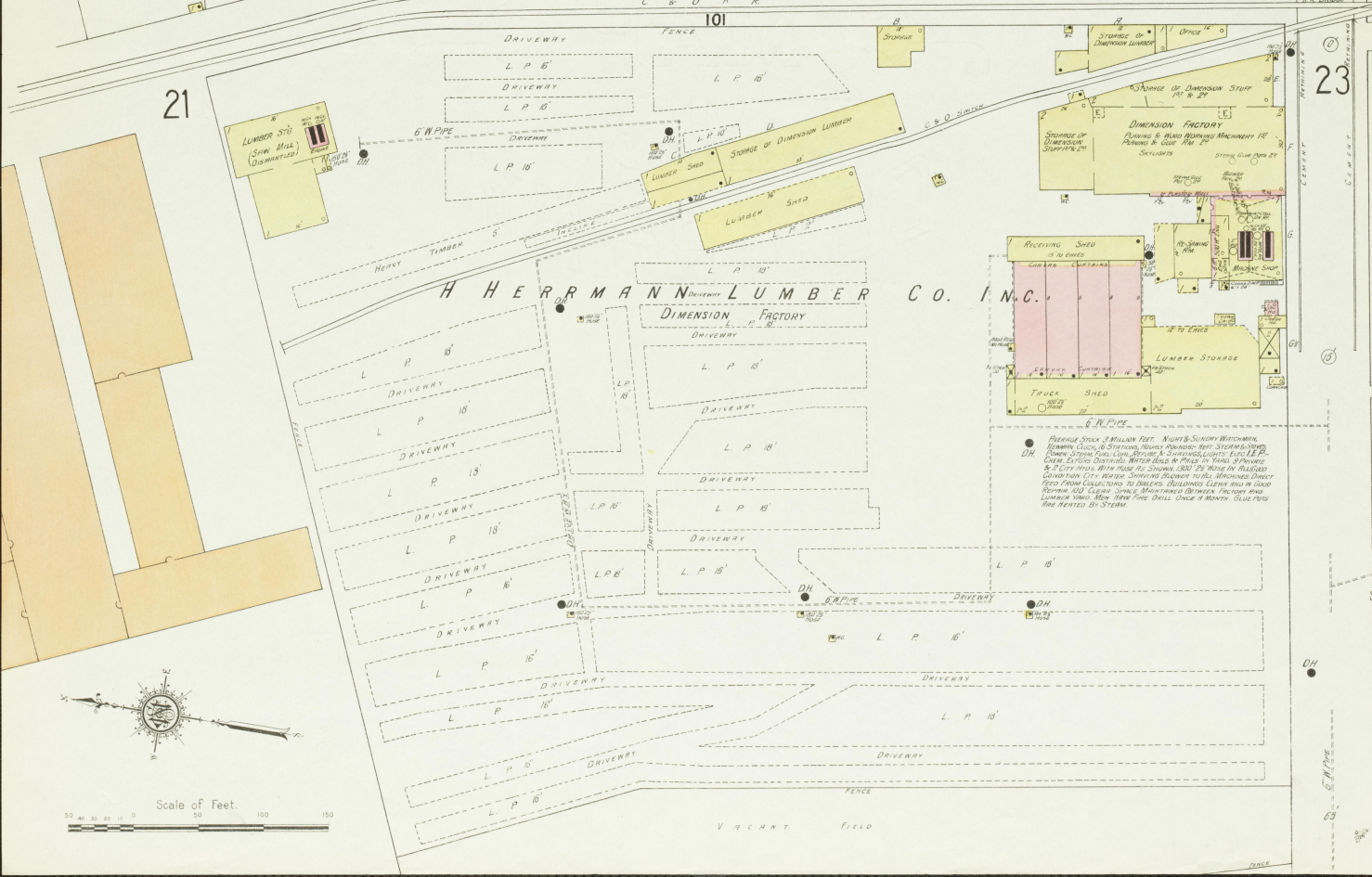
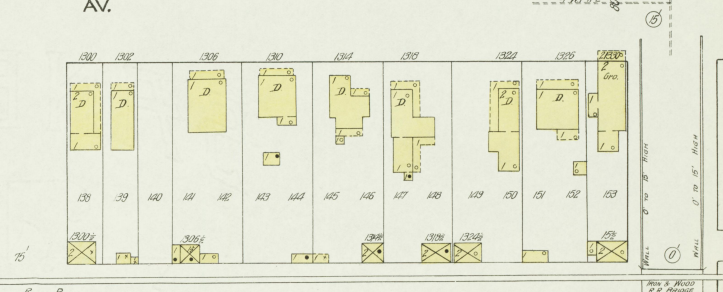
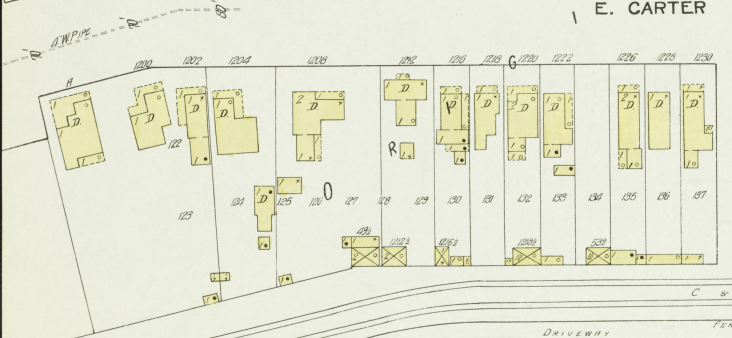
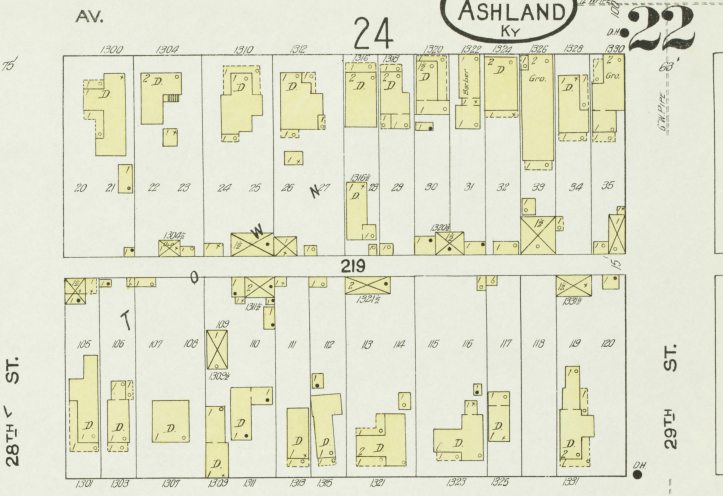


ASHLAND LEATHER CO
 2 STORY BRICK BUILDING - 10000 SQ. FT. (PLAN IN BLUE PENCIL)
 IN LEASE TO AMERICAN TRADING CO. (CLOCK)
 DISTRIBUTION ROOMS - 10000 SQ. FT. (CLOCK)
 REPORTS HOURLY HEAT STEAM INFORMATION
 IN LEATHER BATHS - 10000 SQ. FT. (CLOCK)
 DUMPS & TRUCK LOOPS - ELECTRIC RAILWAY EXTERIOR
 STANDARD CONNECTIONS - 10000 SQ. FT. (CLOCK)
 SHOWS CONNECTED TO FRANKLIN'S HOUSE UNDER
 WATERED PUMP & 1/2 IN. CONC. 10000 SQ. FT. (CLOCK)
 MINUTE PUMPERS FROM BLDG. RESERVOIR
 PUMPS FILLED BY ROOMS - 10000 SQ. FT. (CLOCK)
 30 X 1/2 IN. CONNECTION IN CASE OF EMERGENCY
 100 X 1/2 IN. HOSE 500 FT. HOSE FROM 100 X 1/2
 HOSE PUMP



Scale of Feet.
 0 50 100 150

BUILDINGS MARKED FROM PLANS ARE TO BE BUILT IN BRICK
 REINFORCED CEMENT FINE PROOF CONSTRUCTION WITH 1/2 IN. CONC.
 CUSTOM WALLS, GARDENS, FININGS, SILENT MACHINERY, ETC.
 ALL CONNECTING DOORS TO BE STANDARD 10 X 10 POWER TABLES



● FIREWORK STOCK 3 MILLION FEET NORTH-SOUTH WINDMILL
HEAVY GAUGE 10\"/>

DH

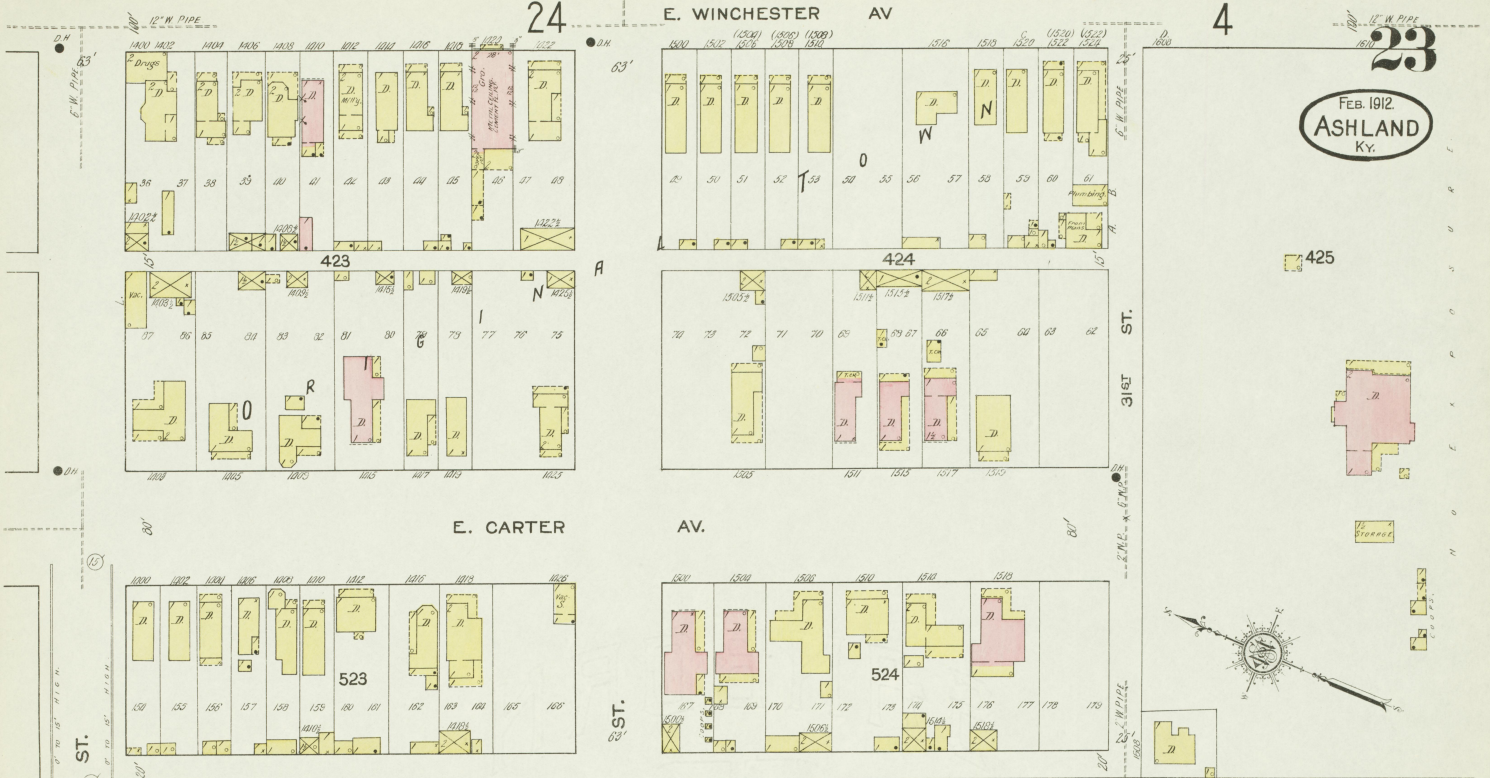
24

E. WINCHESTER AV

4

23

FEB. 1912
ASHLAND
Ky.



22

E. CENTRAL AV.

31ST ST.



Scale of Feet. 0 10 20 30 40 50 60 70 80 90 100 150

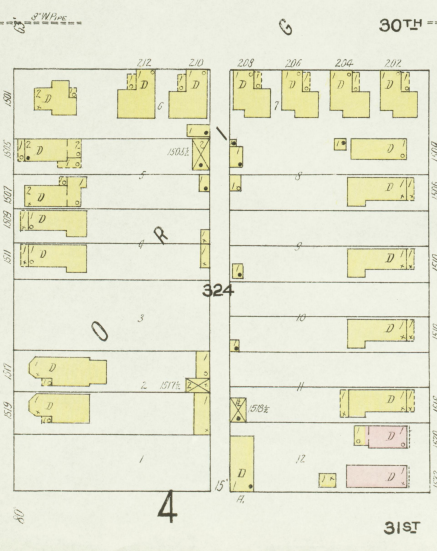
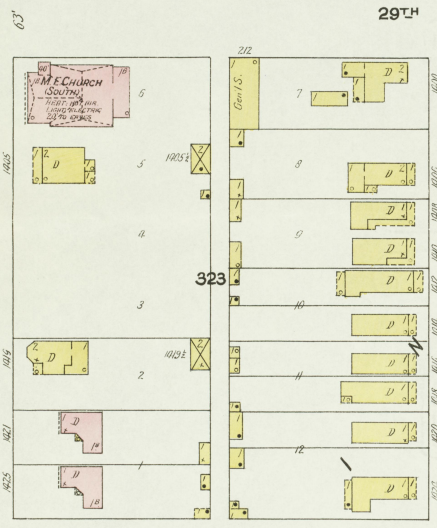
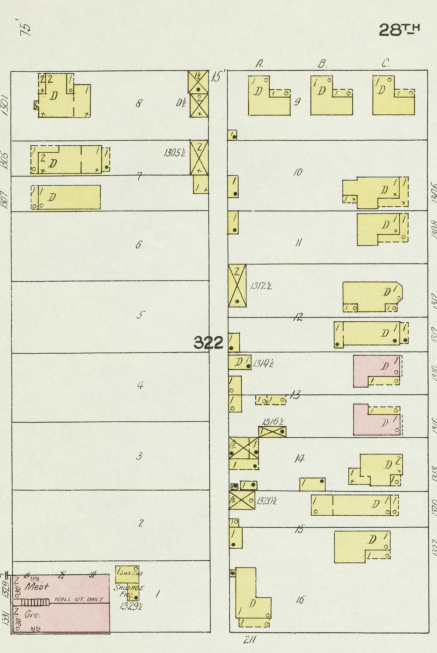
100'

22

E. WINCHESTER AV.

23

100'

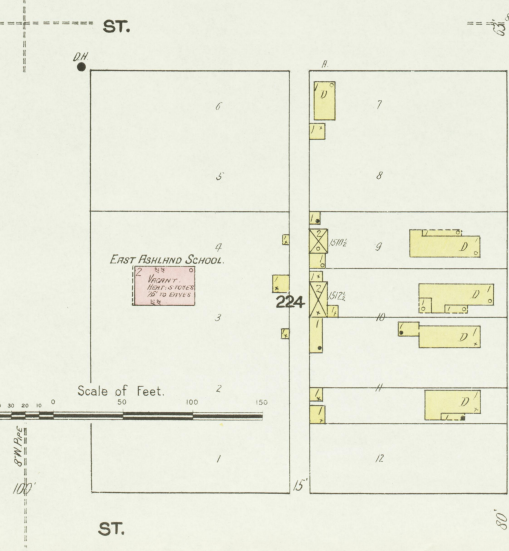
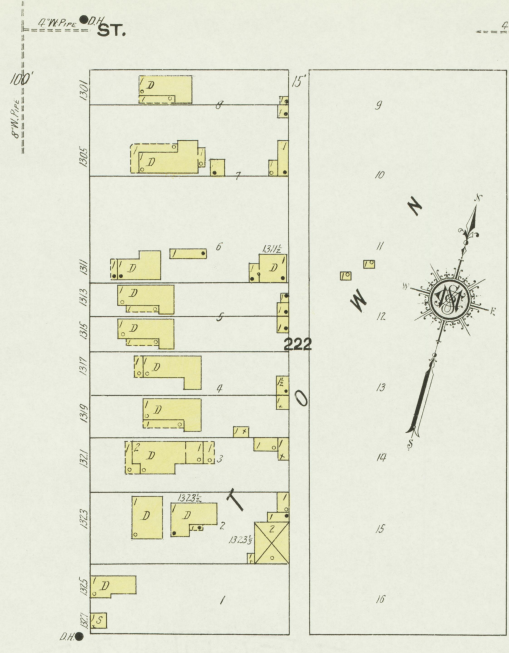


27th ST.

29th ST.

30th ST.

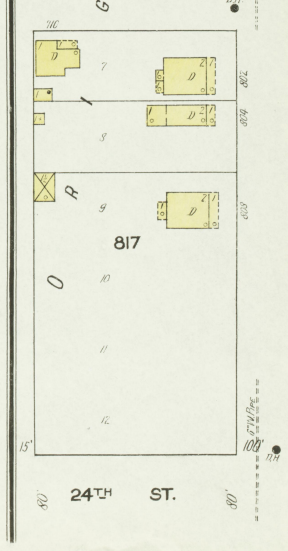
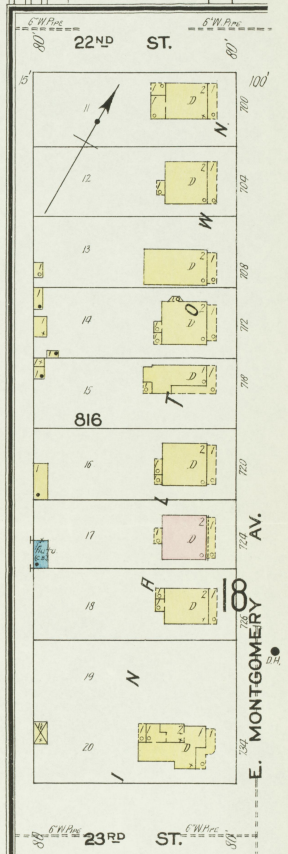
31st ST.



E. FRONT AV.

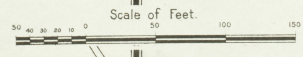
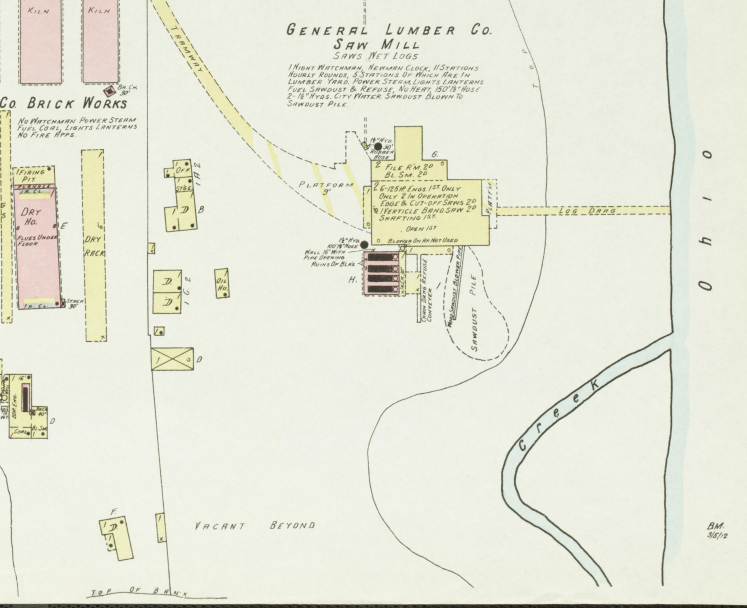
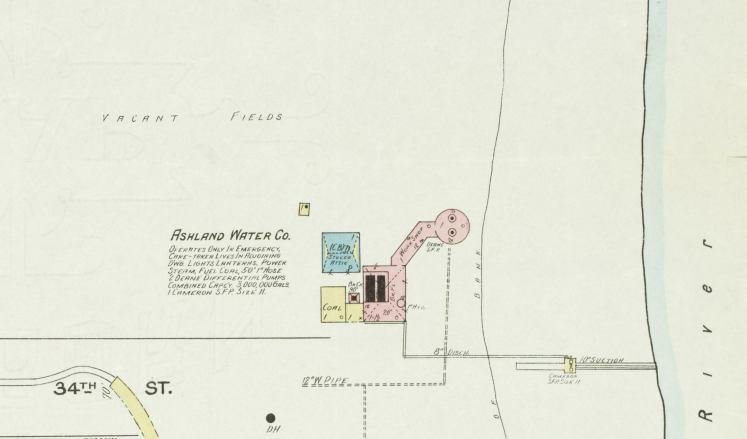
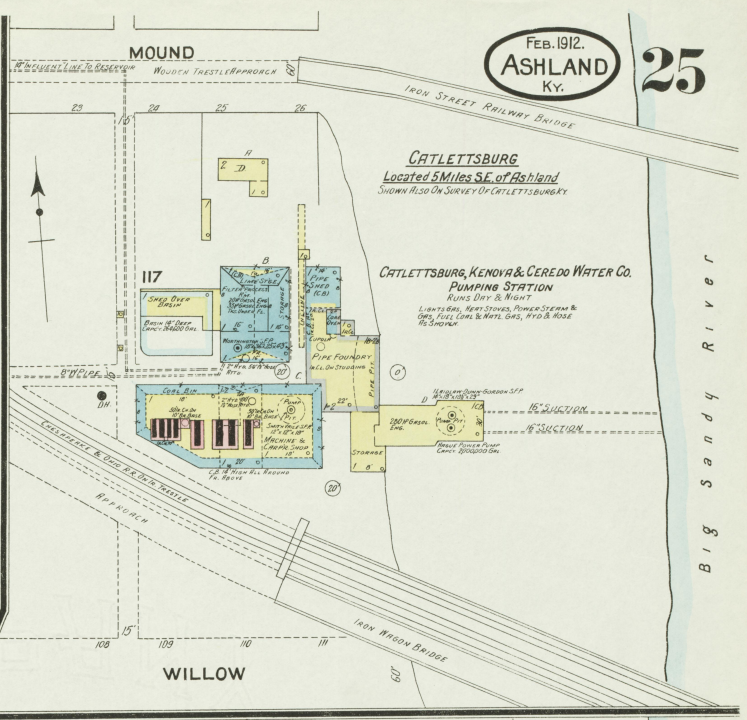
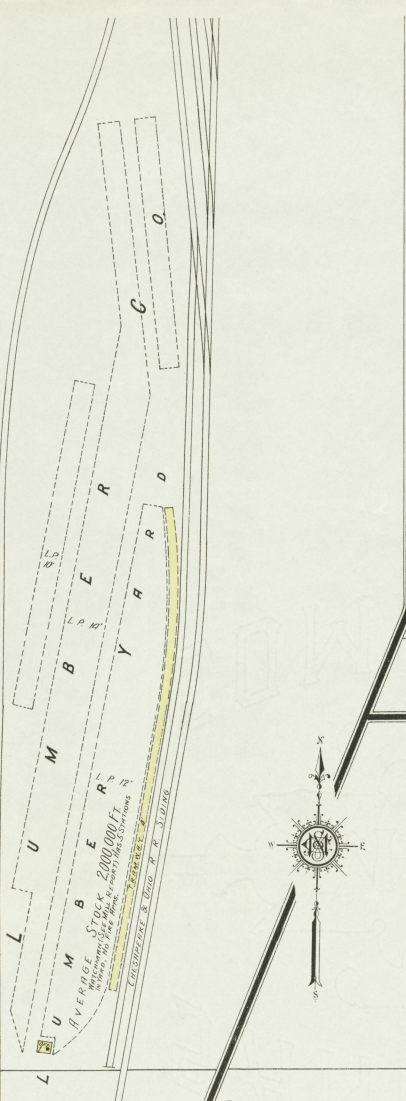
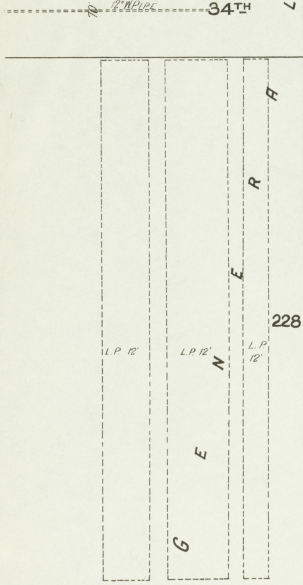
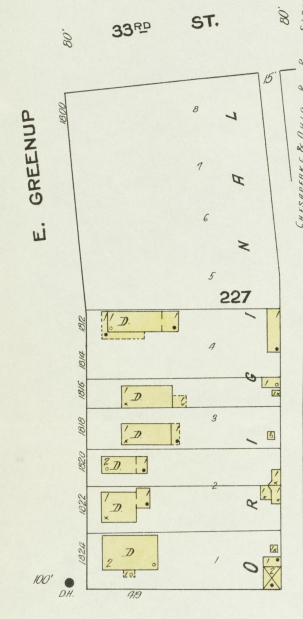
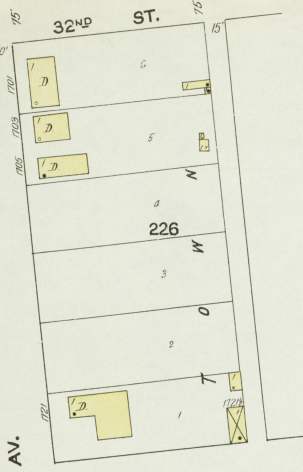
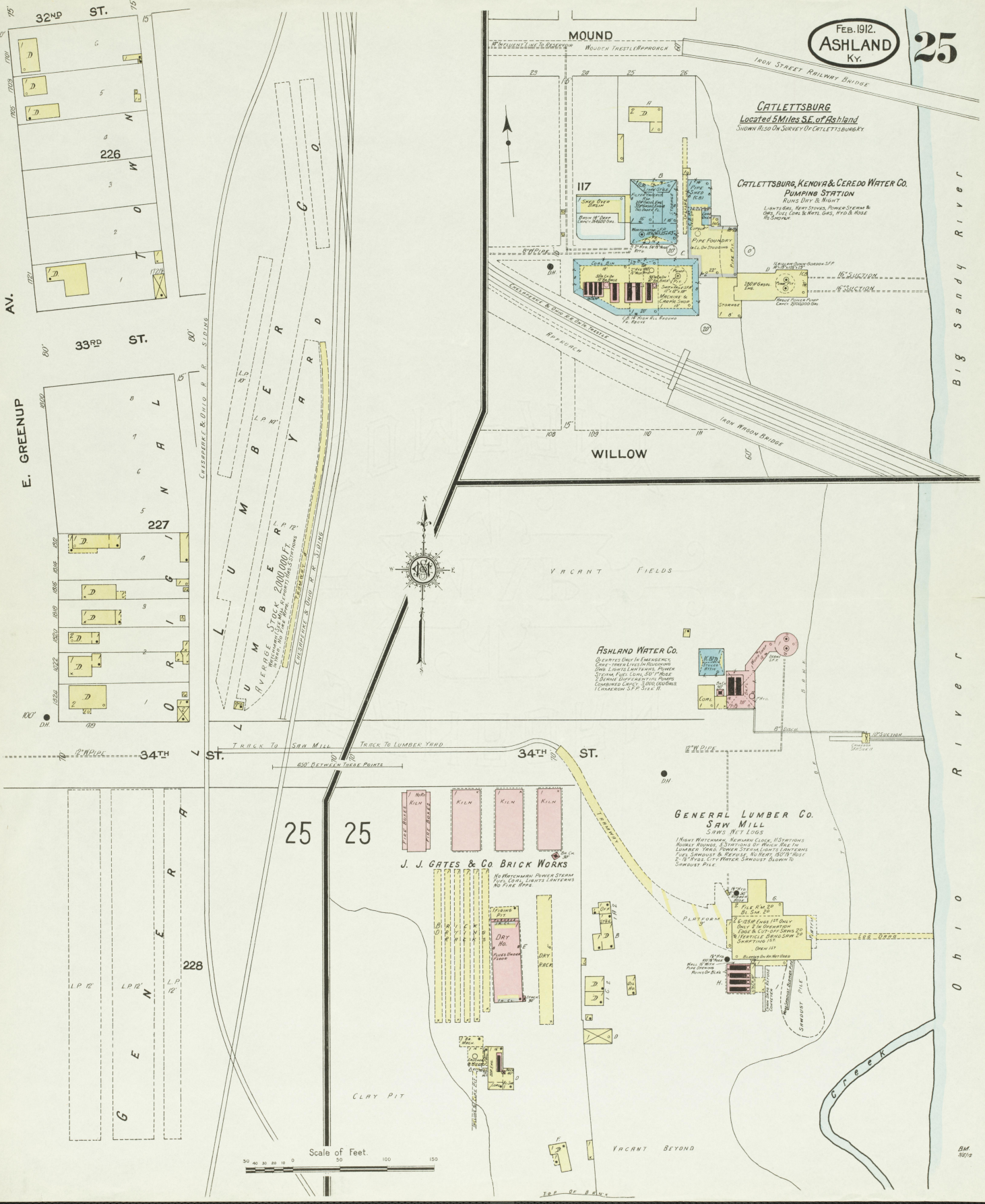
31st ST.

24 FEB. 1912. ASHLAND KY.



E. MONTGOMERY AV.

31st ST.



Big Sandy River
Ohio River

FEB. 1912.
ASHLAND
Ky.

KEYS CREEK
Located 2 1/2 Miles S.E. of Ashland P.O. and
2 1/2 Miles N. of Court Ho. at Catlettsburg.

OHIO RIVER BEYOND

ASHLAND & CATLETTSBURG TURNPIKE

CLYFFESIDE PARK
Located 2 1/2 Miles S.E. of Ashland P.O.

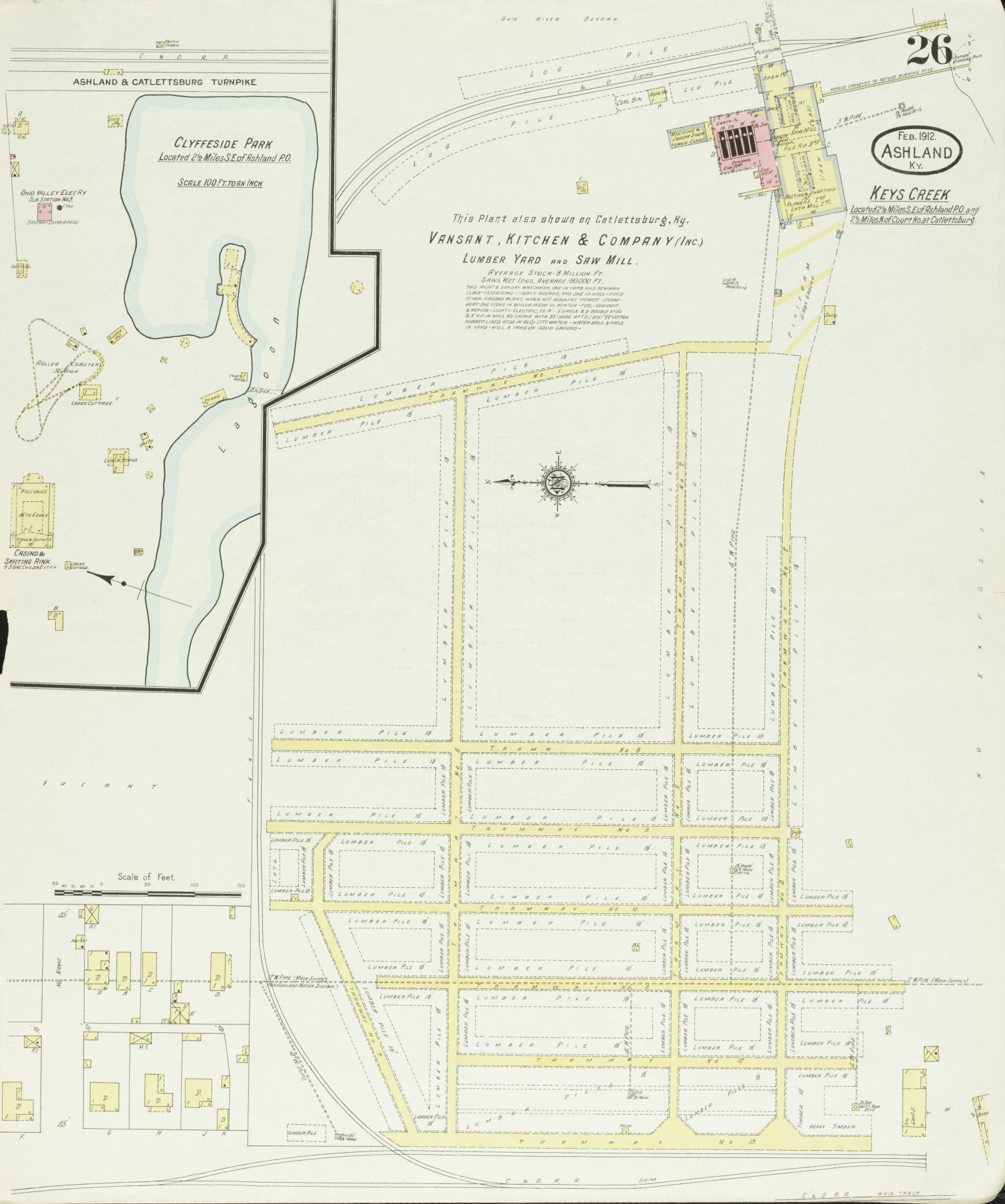
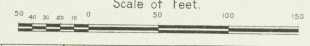
SCALE 100 FT. TO 1 INCH

This Plant also shown on Catlettsburg, Ky.
VANSANT, KITCHEN & COMPANY (INC.)
LUMBER YARD AND SAW MILL.

AVERAGE STOCK: 8 MILLION FT.
SAWS WET LOGS, AVERAGE 80000 FT.
TWO WOODS SINGLY WATCHING, AND IN WOODS ONE WITH
CLOCK-ROTATIONS - SINGLY ROUNDING, AND ONE IN MILL-FORCE
DRIVEN. DRIVEN PLANT WIND NOT SINGLY. FORMER - SCAMP
RENT THE SINGLY IN BOLLER ROOM IN WINTER - FOR - SAWDUST
& REUSE - LIGHTS ELECTRIC, 10" x 10" SINGLY & 8" SINGLY
& 3" x 1" IN MILL AS SHOWN WITH 35" HOSE AT 15' (200' EXHIBITION
WATER LINED WOOD IN ALL CITY WINTER - WATER BRIS & PILES
IN 1910 - MILL & TRAIL ON 1000' SURROUND



Scale of Feet.



N O E X P O S U R E