



# TENNESSEE vs. KENTUCKY

November 22, 1941

Official Program 25c

*Louis Bee*



# THE KENTUCKIAN

LEXINGTON'S NEWEST HOTEL

•  
**YOU'LL FIND YOUR VISIT TO OUR  
HOTEL AS PLEASING AS A  
'WILDCAT VICTORY'**

•  
FRIENDLY, PERSONALIZED SERVICE  
RADIO, BATH AND ICE WATER IN EVERY ROOM

**NEW AIR CONDITIONED GRILL ROOM  
AIR CONDITIONED GUEST ROOMS**

T. H. HARDWICK & PAUL McBRAYER  
Managers

SUKY CIRCLE SERVING YOU



Dixie Ice Cream Co., Inc.

Lexington, Ky.

FOOTBALL  
University of Kentucky  
*vs.* Tennessee

Stoll Field

Lexington, Kentucky

Saturday, November 22, 1941

Published by the Athletics Department of the University of  
Kentucky, Lexington, Kentucky

*Represented for National Advertising by* DON SPENCER COMPANY, INC., 271 Madison Ave., New York City.

Here's hoping that no football team on the  
University of Kentucky schedule can lick  
its weight in

W I L D C A T S

First National Bank & Trust Company

LEXINGTON, KY.

Established 1865

Member Federal Reserve System and Federal  
Deposit Insurance Corporation



**HON. KEEN JOHNSON**  
Governor of Kentucky

**JOHNNY  
CALLS 'EM**

# SIGNALS & PENALTIES



Holding. (Penalty—by offense, 15 yards; by defense, 5 yards.)



Time out.



Offside or violation of kick-off formation. (Penalty, 5 yards.)



Penalty refused, incomplete pass, missed field goal or conversion, both sides offside, etc.

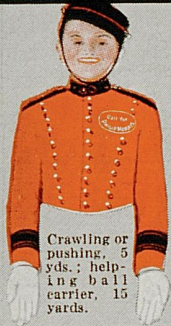


Delay of game or extra time-outs. (Penalty, 5 yards.)



Illegal forward pass.

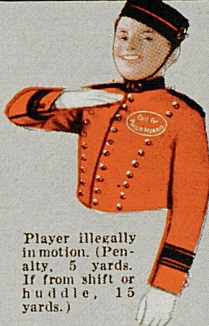
**You can't help inhaling— But you can help your throat!**



Crawling or pushing, 5 yds.; helping ball carrier, 15 yards.



Safety.



Player illegally in motion. (Penalty, 5 yards. If from shift or huddle, 15 yards.)



Score — touchdown, field goal, or conversion.



Unnecessary roughness, illegal defensive use of the hands, clipping, running into or roughing the kicker. (Penalty, 15 yards.)



Intentional grounding of forward pass. (Penalty — loss of down and 15 yard penalty from spot of preceding down.)

**Philip Morris superiority is recognized by eminent medical**



Illegal formation or position of one or more players. (Penalty—5 yards from where ball was put in play.)



Illegal touching of kicked ball inside opponent's 10-yard line—touchback.



Unsportsmanlike conduct. (Penalty—15 yards.) For flagrant unsportsmanlike conduct—15 yard penalty and disqualification.



Interference with forward pass, pass touching ineligible player, or "screening" pass receiver. (If penalty on offense, when interference occurs beyond line of scrimmage, 15 yards and loss of down; on or behind line of scrimmage, loss of down only. Interference by defense, ball to offense on spot of foul as first down.)

**authorities. For smoking pleasure without penalties—**



# CALL FOR PHILIP MORRIS!

**AMERICA'S FINEST CIGARETTE**

---

## Through the Years

"Backwards, turn backwards, time in thy flight" and let's take a look at this ancient gridiron rivalry between Kentucky and Tennessee — a rivalry that began 49 years ago when the stalwart young men of the Blue Grass humbled the Orange-clad Tennesseans at Knoxville by 56 to 0 before 4,000 fans, a record crowd in those days.

The annual battle between the football teams of these two great State universities has become traditional, yet despite their bitterness, there remains a feeling of deep friendship between Kentucky and Tennessee OFF the gridiron.

The Volunteers have won a majority of the games—we will let it go at that—but the Wildcats have nothing to be ashamed of in this hoary series. And, no matter which team is favored to win, the other frequently amazes the football world with a dizzy upset victory over the other.

Harken to a flashback of some of the spectacular Wildcat-Volunteer games of recent years.

The scene was the sunken bowl at Knoxville back in 1928 when a great team of Tennessee sophomores was blazing across the horizon. Kentucky, then coached by Harry Gammage, with Bernie Shively as his chief assistant, had lost to Northwestern, Alabama and Vanderbilt and was given no chance of upsetting the Vols. Yet, the hard-bitten Kentuckians, captained by Clair Dees, caused great grief in Knoxville that Thanksgiving Day by holding the Vols to a scoreless tie, although outplayed by the Orange.

The next year Tennessee, out for vengeance, brought the famous "touchdown twins"—Gene McEver and Buddy Hackman—to Lexington, a stop-over while enroute (wishful thinking) to the Rose Bowl. It snowed that day, as many fans will recall, and the Cats, who had lost a thriller to Alabama, outclassed the Vols, who were fortunate to score a last-minute touchdown and gain a 6 to 6 tie. Will Ed Covington was captain of the Big Blue that year, and the Vols didn't get to play in the Rose Bowl.

Let's skip a year and see what happened here in Lexington on Thanksgiving Day 1931 when Big Babe Wright, one of the South's finest tackles, captained the Cats. This time, again, the Vols seemed a certainty for a Rose Bowl invitation. Once more the Tennessee lads dropped off in Lexington. They had one more game to play—with a powerful New York University eleven. The All-American halfback McEver was still playing with the Vols, who also boasted a great sophomore, Beatty Feathers, later to become an All-American back.

That game stands out in retrospect. Kentucky had lost close games to Duke and Alabama and had been tied by Maryland, while the Vols, as usual, had a clean slate. The odds were on the Vols by a big margin. But the odds overlooked the fact that Babe Wright would block one of Feathers' punts deep in Vol territory, and the odds didn't know that Dutch Kreuter, a fine Wildcat flankman, would pick up the ball and dash for a touchdown.

With a six-point lead, the Kentuckians battled gamely. Still they couldn't keep the Vols completely out of the picture, and a late rally netted the invaders a touchdown, with no extra point. Perhaps the outstanding feature of that game was Kentucky's last-quarter goal-line stand. The Vols had a first down within the Kentucky five-yard line. Two vicious lunges by Feathers and two by McEver left the ball still a few inches away from the stripes and once more the Vols left their Rose Bowl hopes on Stoll Field.

In 1935, with Chet Wynne as the Kentucky coach, the Cats overwhelmed the Vols for the last time. The score that day was 27 to 0 and that made the season a success for the Blue.

With one exception, since that time, Tennessee hasn't had a great deal of trouble with our boys on the gridiron. But there was a thrilling battle at Knoxville in 1936, which, according to the scoreboard and according to a disputed ruling by the officials, ended in a 7-6 win for the Vols. That was humdinger of a game. Kentucky scored first, then the Vols forged ahead on a touchdown and the extra point.

But the Cats weren't out of the game. Fleet Bob Davis came within an ace of placing Kentucky out in front just after the Vol touchdown when he took the kick-off and raced 70 yards only to be brought down on the Vol 30-yard stripe. Then, in the closing minute of play, Kentucky passed and ran for a first down on the Vol four. Three line plunges and it was fourth down with less than six inches to go. Bert Johnson, Kentucky's 210-pound halfback, who had been on the bench for ten minutes, was summoned by Quarterback Dick Robinson to make the final plunge. Victory was within Kentucky's grasp as the big Ashland-er entered the game.

He grabbed the ball and, instead of plowing into the line, leaped over it, advancing the ball the length of his body across the line before the Orange wall surged back. The Kentucky fans were jubilant. They had seen Johnson carry the ball over the goal line before he was pushed back. But the officials were looking in some other direction. The ball was placed back to the spot where Bert had been pushed back—still four inches from the line, and the game ended 7 to 6 for the Vols.

But this is another year. The rivalry is just as bitter as ever. Maybe this time ———

---



**PRESIDENT H. L. DONOVAN**  
University of Kentucky





*O'Shea*

HUNT'S ATHLETIC GOODS CO.  
MAYFIELD, KY.

Are Exclusive Agents In  
The State Of Kentucky For  
O'Shea Football Equipment  
O'Shea Basketball Clothing  
O'Shea Award Sweaters

Write for 1941 catalog  
With special prices to schools.

O'Shea Knitting Mills  
CHICAGO, ILL.

Eats, Drinks and Smokes

## Dunn Drug Store

Lime and Maxwell

PHONE 289

"The Home of Dunn's  
Better Ice Cream"

Lexington's Most Beautiful Drug Store

*For Quality  
Printing*



## Kentucky Kernel

"Your Print Shop on the Campus"

- Job Printing
- Display Advertising
- Calling Cards
- Invitations



Here's To  
The Team - -  
You Are  
U. K.'s Cream!

PHONE 62

- Our Cleaning  
is the Cream  
of Lexington's  
Crop!

**Lexington Laundry Co.**  
INCORPORATED  
LAUNDERERS • DRY CLEANERS • RUG CLEANERS

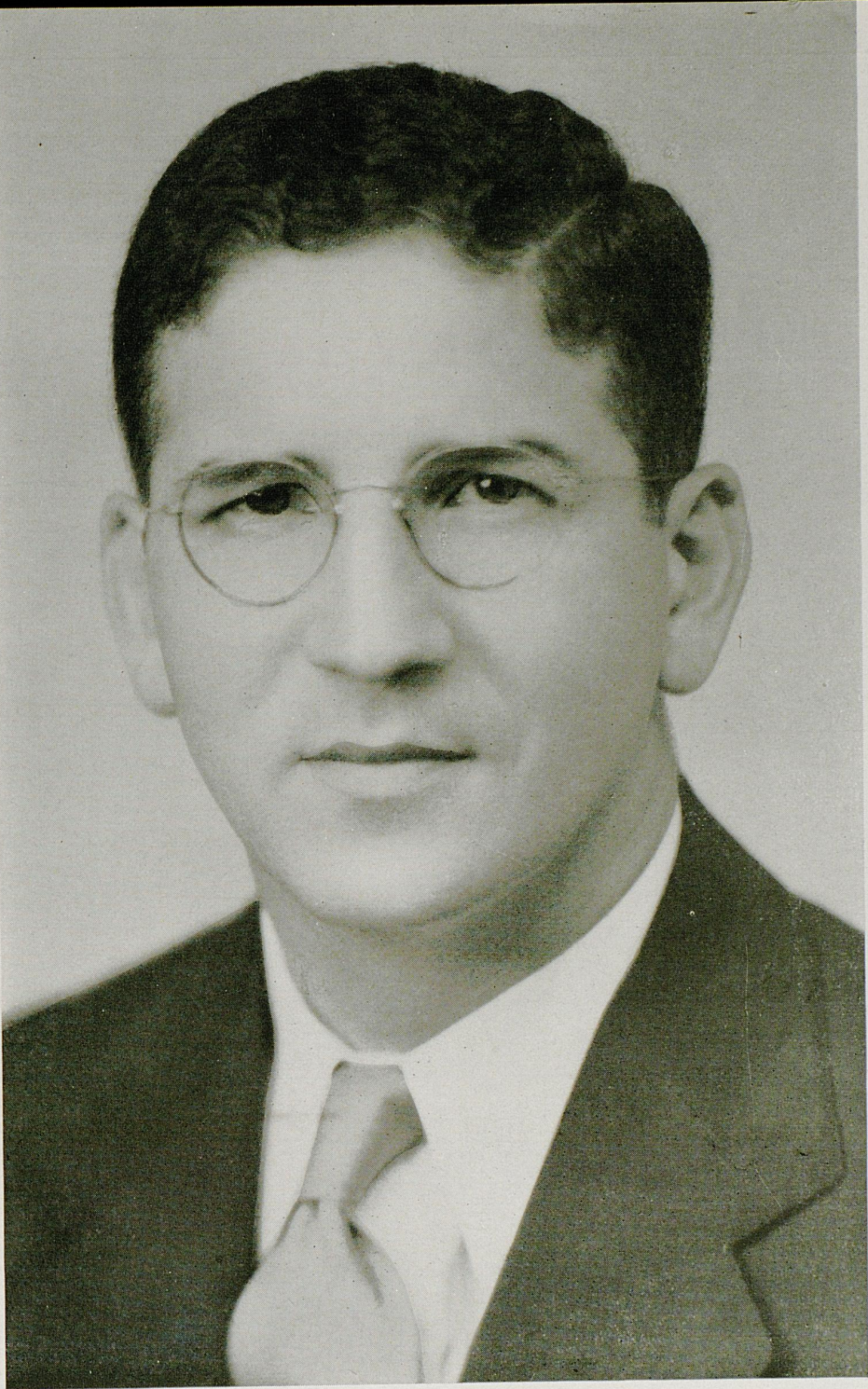
On the  
refreshing  
side



DRINK

*Coca-Cola*

TRADE-MARK REG. U.S. PAT. OFF.



Ab Kirwan  
Head Football Coach  
University of Kentucky

## THE LAFAYETTE HOTEL

extends a cordial welcome and invitation to the football fans to meet with us after the games — renew old friendships, greet new friends and enjoy the spirit of good fellowship that abounds.

### THE WHITE SPOT WELCOMES YOU

We are always ready to serve you the best of Foods at any time—  
for 24 hours a day—

. . . we put the O.K. in Cooking

## THE WHITE SPOT

George Sarras—103 East Main Street

Compliments of

**J. P. WRIGHT and B. C. JONES**

## SPOTSWOOD SPECIALTY COMPANY

Phone 705 — Lexington, Ky.

DANCE FAVORS  
SERPENTINE

BALLOONS  
HATS

CONFETTI  
HORNS

Pencils — Leather Goods — Calendars, Etc., Etc.

Originators and Manufacturers of Advertising Specialties

**15% DISCOUNT ON ALL CASH AND CARRY**

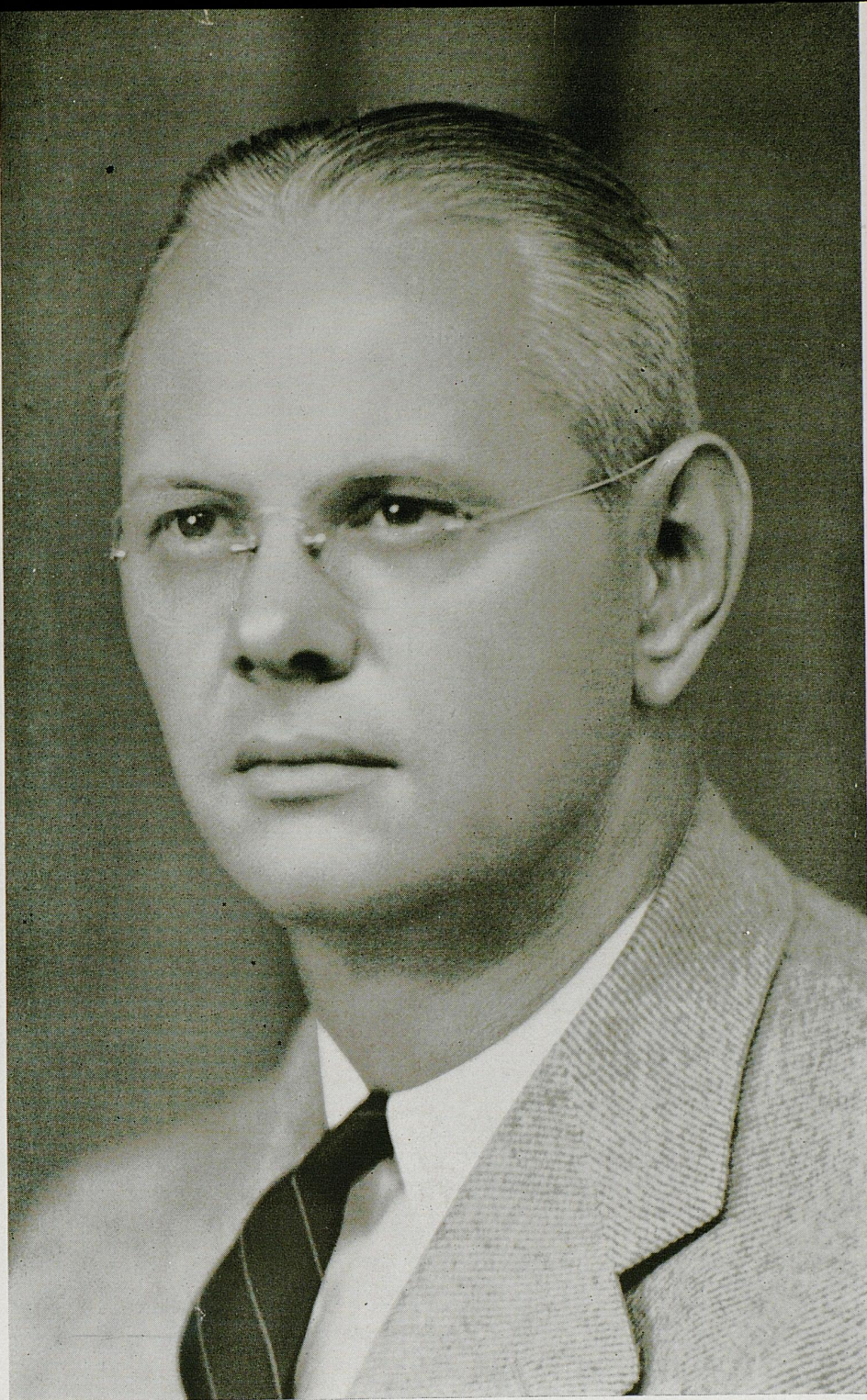
Make Use of Our Convenient Drive-in Facilities

***De Boor***

**Laundry - - - Dry Cleaning**

PHONE 2000

265 EUCLID AVE.



Bernie A. Shively  
Director of Athletics  
University of Kentucky



Trick stuff is old stuff, Horatio. It just doesn't go any more. It's smart play that carries the ball these days. And that goes for clothing, as well as anything else. You'll find no tricks in our entire collection. Just good clean tailoring, sound design, and superlative fabrics. The only trick is in our ability to give real value at sensible prices.

*"Headquarters for Authentic College Fashions"*



In Today's Game  
**THE WILDCATS**  
 Are Wearing

**GoldSmith**  
 FOOTBALL EQUIPMENT

Coaches, players, and trainers of leading colleges and universities use and endorse Goldsmith Football Equipment. They know Goldsmith products represent the utmost in value and service.

There is Goldsmith equipment for every sport. The name "Goldsmith" has been a hallmark of quality for 65 years.

**THE SMITH-WATKINS CO.**

Distributors  
 236 E. Main St.      Lexington, Ky.

# CAMPUS CAMERA

© 1941



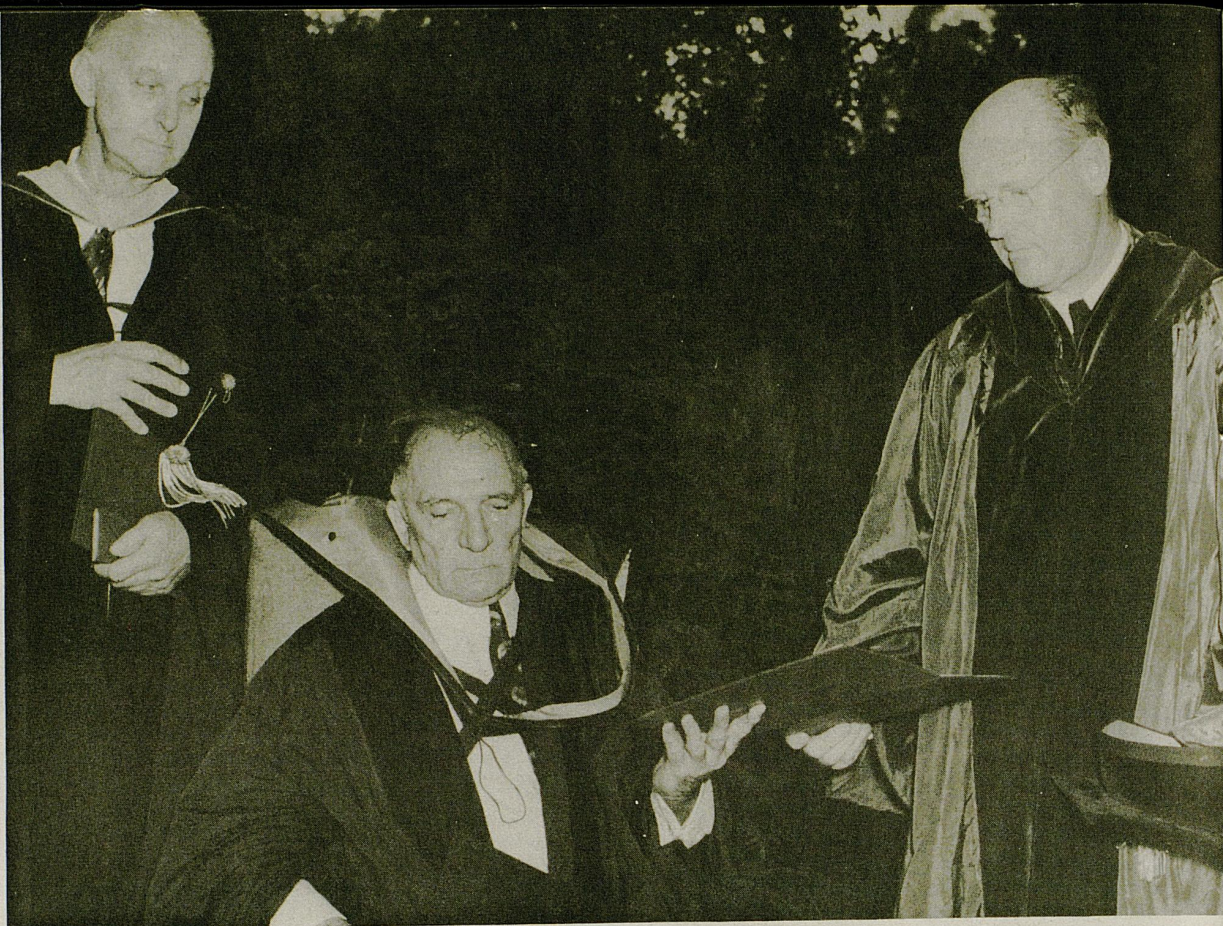
Above: "M" Club initiation on the Mississippi State campus.



Above: The famous Golden Egg, symbol of supremacy between Mississippi State and the Ole Miss Rebels. State has possession by virtue of the 19 to 0 win last year.

Right: The Maroons get a few tips on Jai Alai, world's fastest game, on their trip to Miami.

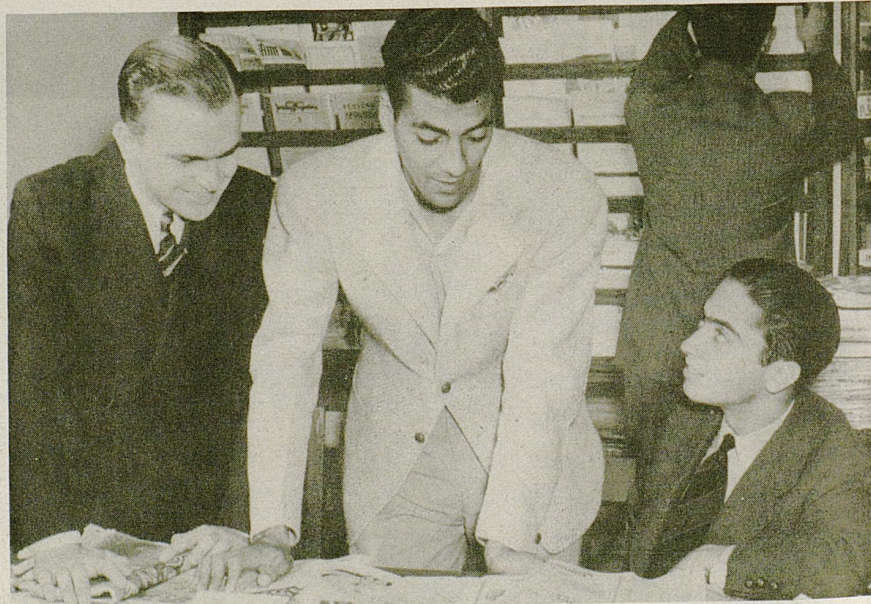




Above: For the first time in the history of the institution, the University of Florida confers an honorary degree in absentia. The degree of Doctor of Laws is given Col. Raymond Robins, famous economist, lecturer and peace protagonist. Former U. S. Commissioner of Education, Dr. John T. Tigert, president of the University, right, awards the degree, after presentation by Provost of Agriculture, Dr. Wilmon Newell, left.



Above: A discordant note in an otherwise perfect evening is struck when Max Cook, University of Florida senior, finds a flat tire.



Above: South American students at Florida make use of the library of the Institute of Inter-American Affairs. Each year more than twenty students from Central and South America attend the University under the program of the Institute.

In  
co-  
nun

HIGH  
Alice Chan

CHR  
Katherine

UNIV  
Betty Lou

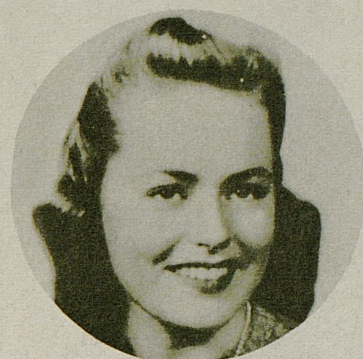




Jane Moran  
University of Chicago



Mattigene Palmore  
University of Kentucky



Lillian Bussian  
Valparaiso University

In a nation-wide poll conducted by Look Magazine, Miss Mattigene Palmore of the University of Kentucky was selected as the most beautiful co-ed in the entire country. Miss Jane Moran won second place and Miss Lillian Bussian, third. On this page CAMPUS CAMERA presents a number of winners from Southern colleges.



HIGH POINT COLLEGE  
Alice Chandler, High Point, N. C.



GEORGIA STATE COL. FOR WOMEN  
Martha Daniel, Atlanta, Ga.



NEWBERRY COLLEGE  
Harriet Harden, Newberry, S. C.



CENTENARY COLLEGE  
Beverly Herndon, Shreveport, La.



DAVIS AND ELKINS COLLEGE  
Florence Coontz, Elkins, W. V.



QUACHITA COLLEGE  
Marjorie Allen, Bradley, Ark.



CHRISTIAN COLLEGE  
Katherine Poulos, Muskogee, Okla.



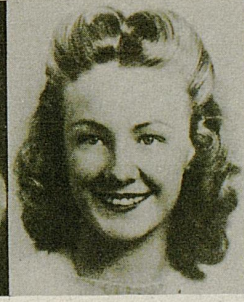
TEXAS TECHNOLOGICAL COLLEGE  
Ollie Sue Armstrong, Fort Worth, Tex.



LINCOLN MEMORIAL UNIVERSITY  
Mary Saunders, Wilmington, N. C.



DUKE UNIVERSITY  
Jean Megerle, Fort Thomas, Ky.



APPALACHIAN COLLEGE  
Ruth Orders, Mooresville, N. C.



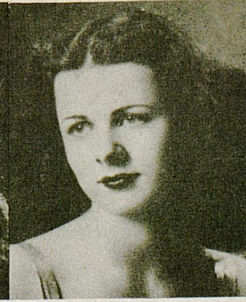
SOUTHERN METHODIST UNIVERSITY  
Patricia Compton, Dallas, Tex.



UNIVERSITY OF OKLAHOMA  
Betty Lou Roberts, Okla. City, Okla.



VANDERBILT UNIVERSITY  
June Burks, Columbia, Tenn.



TEXAS STATE COL. FOR WOMEN  
Ruth Tilley, Shamrock, Tex.



MILLSAPS COLLEGE  
Millicent Lampe, Jackson, Miss.



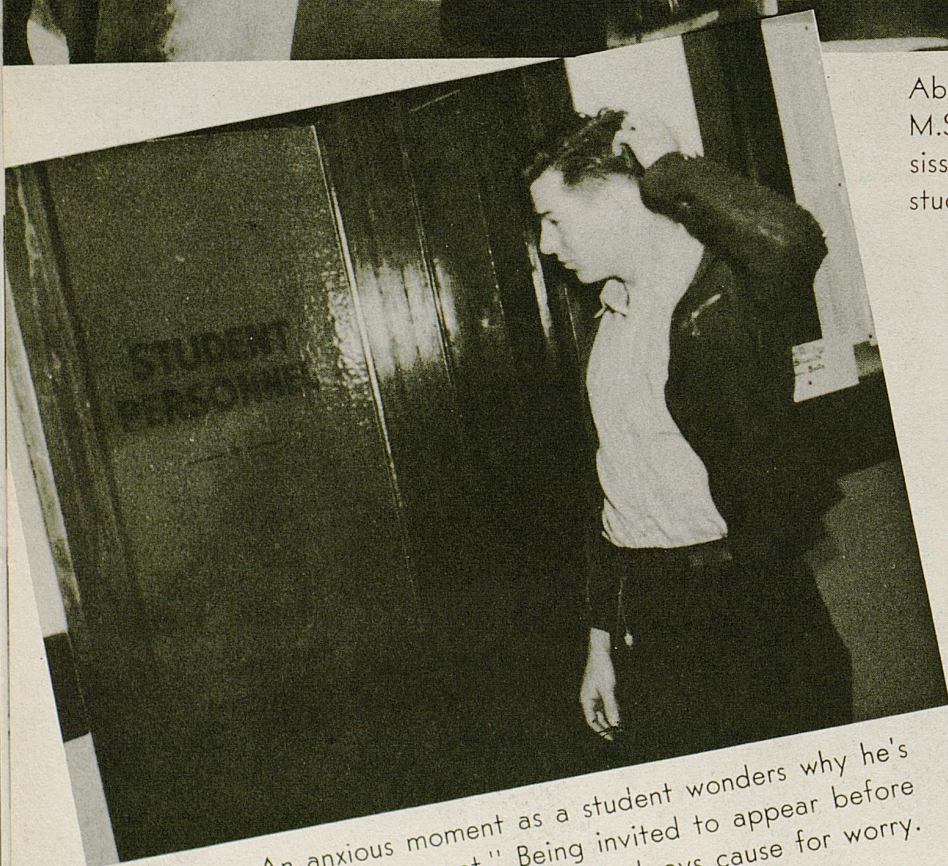
ALABAMA COLLEGE  
Marguerite Haisten, Selma, Ala.



OKLAHOMA COLLEGE FOR WOMEN  
Merye Louise Cook, Okmulgee, Okla.



Above: A bus load of pretties from M.S.C.W., sister institution of Mississippi State, arrive to attend a student association dance.



Above: An anxious moment as a student wonders why he's being put "on the carpet." Being invited to appear before the director of student personnel is always cause for worry.

# Shrine Charity Football

Stoll Field

Saturday, November 29

## EAST vs. WEST

1:30 p. m.



### State Championship Six-Man Football

## Burgin vs. Lebanon Junction

12 o'clock



Tickets on sale at Lilac Room  
Phoenix Hotel

RES. SEAT . . . . .	\$1.10
BOX SEAT . . . . .	\$1.38

### Tennessee Coaching Staff



Left to right: Bill Murrell, freshman line coach; Bob Foxx, assistant varsity backfield coach; Bob Woodruff, assistant varsity line coach; Hugh Faust, varsity backfield coach; John Barnhill, head coach and athletic director; Major Bill Britton, varsity end coach; Johnny Mauer, head freshman coach, and Leo Petruzze, freshman backfield coach.



GO YOU

# WILDCATS



Hit 'Em Hard!

Hit 'Em Low!

## Metropolitan Restaurant

"FAMOUS FOR"  
STEAKS — CHOPS  
and  
SEA FOODS

107-111 W. Main

Lexington, Ky.

## PERRY LUMBER COMPANY

Incorporated

246 Walton Avenue

Phone 5500

"Builders of Better Homes"

CAREY ROOFING LUMBER YALE HARDWARE

Famous

## Homemade Chili

*Rogers*

RESTAURANT

Compliments of

## HARRY E. BULLOCK

### Wholesale Coal

No. 2 Union Station Bldg.

LEXINGTON, KY.

PHONE 660

Buy Chrysler's Finest Fluid Drive  
1942 Model

## Kinkead-Wilson Motor Co.

Distributors

CHRYSLER AND PLYMOUTH CARS

## Kentucky Ignition Co., Inc.

The House of Genuine Parts

DISTRIBUTORS AUTOMOTIVE EQUIPMENT

Lexington

Louisville

SALOSHIN'S CURB SERVICE

Where Everyone Goes After The Game

## SALOSHIN DRUG STORE

East Main at Clay

Telephone 3333

Compliments of  
Ades-Lexington Dry  
Goods Company  
Lexington, Kentucky

## Baugh & Garner

Incorporated

COMPLETE HOME FURNISHERS

"If It Isn't Right We Make It Right"

Lexington

Danville

Distributors for:

CARRIER Air conditioning's first name.

KELVINATOR Commercial and domestic re-  
frigeration.

## Combs Lumber Company

(Incorporated)

439 E. Main St.

Telephone 5300

## FLEISHMAN'S PHOENIX FLOWER SHOP

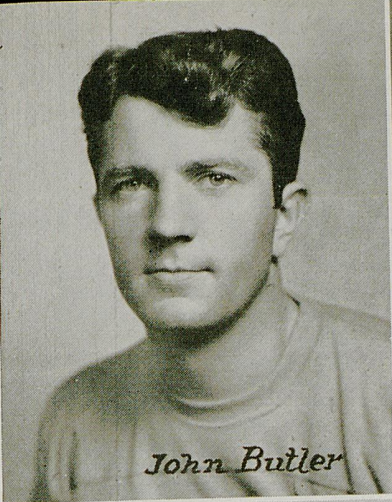
TELEPHONE 1590

At Our New Location — 107 W. Main

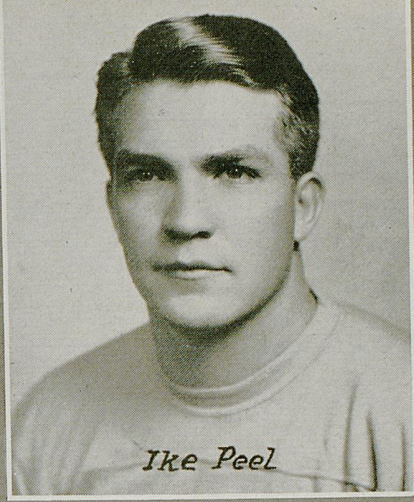
NEXT HOME GAME

November 22

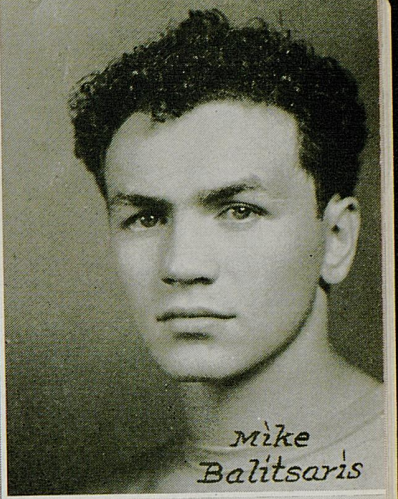
TENNESSEE



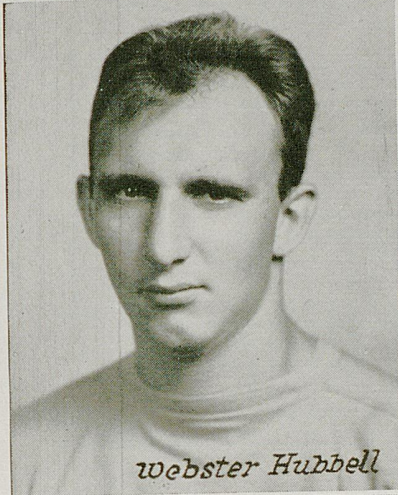
*John Butler*



*Ike Peel*

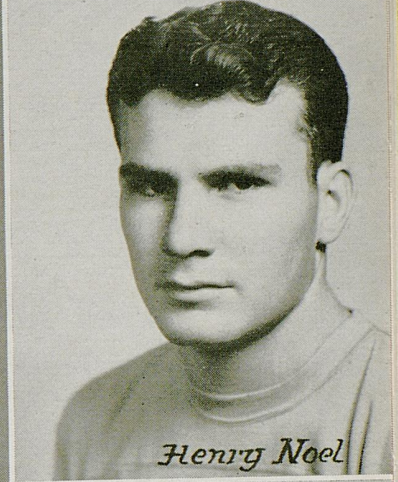


*Mike  
Balitsaris*



*webster Hubbell*

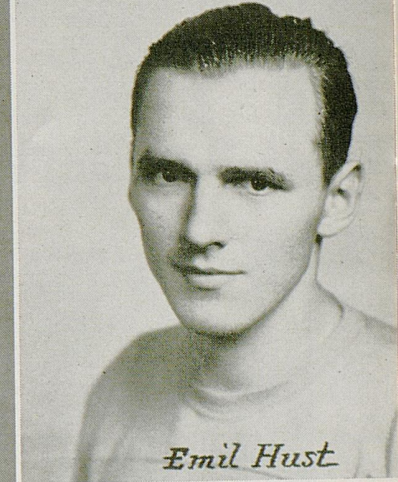
# SENIORS



*Henry Noel*



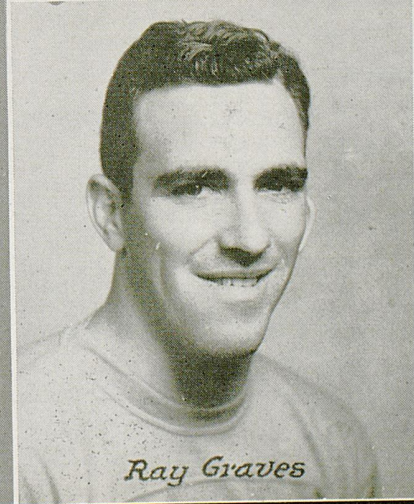
*Don Edmiston*



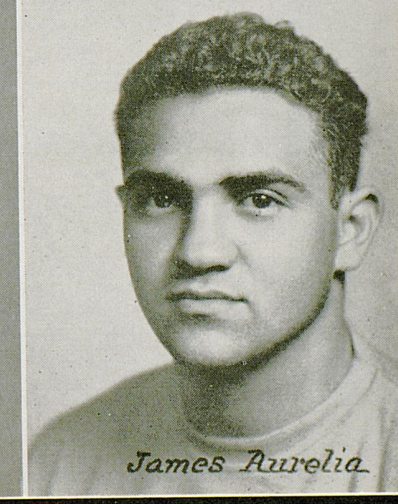
*Emil Hust*



*Dick Mulloy*

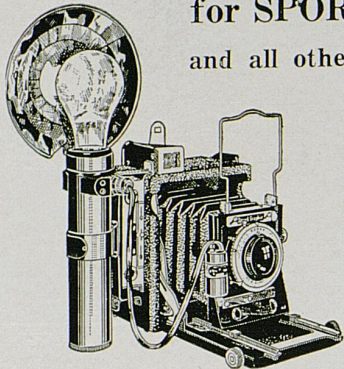


*Ray Graves*



*James Aurelia*

**FAVORITE OF THE PRESS**  
for **SPORTS**  
and all other pictures



*Speed  
Graphic*

It will be your favorite, too!

At your convenience, see this outstanding camera at our store.

COMPLETE STOCK OF

**CAMERAS**

- Speed Graphic
- Eastman
- Argus
- Bell & Howell

Movies  
and Stills  
\$100  
to  
\$30000

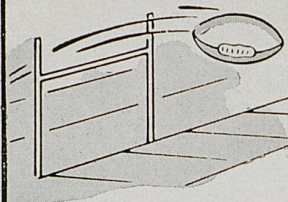
**Tinder-Krauss-Tinder**

OPTICIANS—PHOTOGRAPHIC SUPPLIES

145 North Upper St.

Phone 5080

**WATCH POSTAL  
PUT IT OVER!**



A \$100,000 business deal to put over . . . or a 20c birthday greeting to send, you can always depend on Postal Telegraph to do its part. For Postal Telegraph offers *faster, friendlier* service at *lower* cost. Charges for telegrams telephoned in appear on your phone bill.

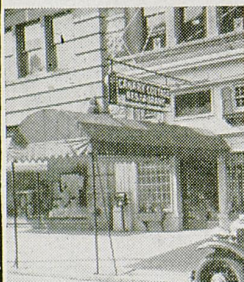
Call Postal Telegraph To Send

- |                      |                   |
|----------------------|-------------------|
| BIRTHDAY GREETINGS   | RESERVATIONS      |
| CONGRATULATORY WIRES | SINGING TELEGRAMS |
| MONEY ORDERS         | TRAVEL MESSAGES   |

*Postal  
Telegraph*

"FIRST WHEN SECONDS COUNT!"

**MEET** AFTER THE GAME IN



128 E. MAIN

*Canary  
Cottage*

AIR CONDITIONED  
FOR YOUR  
COMFORT

THE SOUTH'S MOST BEAUTIFUL  
COCKTAIL LOUNGE . . . . .

also

- Cincinnati
- Louisville
- Indianapolis



1 Hr. . . . .	10c
3 Hrs. . . . .	15c
All Day . . . . .	20c

A Space To Park  
"Down Town". . .

"Complete Service For Your Car."

**Sistrunk Storage Garage**

Corner Vine and Mill Sts.

Phone 301

1941

TENNESSEE SQUAD  
ROSTER

1941

No.	Name	Position	Years on Squad	Weight	Height	Home
15	Aurelia, James	E	3	191	5-10	Philadelphia, Pa.
62	Balitsaris, Mike	E	3	180	5-11	Pittsburgh, Pa.
23	Bevis, Bill	B	1	181	5-10	Marianna, Fla.
22	Butler, John	B	3	160	5-11	Knoxville, Tenn.
48	Chadwell, Jim	T	1	217	6-2	Kingsport, Tenn.
77	Cifers, Bobby	B	1	188	5-11	Kingsport, Tenn.
51	Connelly, Pat	G	1	180	5-11	Midland, Fla.
10	Cross, Roy	E	1	172	5-11	Knoxville, Tenn.
50	Edmiston, Don	T	3	200	6-2	Midland, Fla.
52	Field, Eugene	G	1	197	6-1	Evanston, Ill.
76	Fisher, Jody	C	2	190	6-2	Bluefield, W. Va.
36	Francis, John	T	1	194	5-11	Knoxville, Tenn.
11	Gaffney, Jim	B	1	190	5-11	Cumberland, Md.
70	Gold, Bill	B	1	200	5-1	Brockton, Mass.
67	Graven, Clyde	G	1	186	6-0	Louisville, Ky.
55	Graves, Ray (C)	C	3	194	6-1	Knoxville, Tenn.
16	Hicks, Bob	C	1	180	5-11	Hazelton, Pa.
60	Howard, Ermal	G	1	177	5-9	Matewan, W. Va.
12	Hubbell, Bud	E	1	193	6-3	Bridgeport, Conn.
40	Hubbell, Webster	T	3	192	6-2	Bridgeport, Conn.
24	Hust, Al	E	2	202	6-2	Cleveland, Ohio
66	Hust, Emil	E	3	185	6-0	Cleveland, Ohio
64	Hutchison, Byron	T	2	188	6-3	St. Petersburg, Fla.
25	King, Bill	B	2	173	5-10	Knoxville, Tenn.
49	Klarer, Rudy	G	1	177	5-9	Louisville, Ky.
38	Ledford, Denny	T	1	197	6-3	Knoxville, Tenn.
47	Lenahan, Pat	E	1	176	5-11	Louisville, Ky.
68	Lloyd, O. C.	E	1	182	6-0	Montgomery, W. Va.
44	Meek, Bill	B	2	175	5-11	Birmingham, Ala.
42	Meyers, Jim	G	1	188	5-11	Madison, W. Va.
31	Mitchell, Charles	B	1	175	5-10	St. Albans, W. Va.
33	Mulloy, Dick	E	3	177	5-11	Louisville, Ky.
43	Noel, Henry	G	3	181	5-9	Greenville, Tenn.
32	Nowling, Bill	B	2	190	5-11	St. Petersburg, Fla.
54	O'Brien, James	T	1	205	6-1	Sharon, Pa.
29	Partin, Max	B	1	190	6-2	Jacksonville, Fla.
41	Pauley, Orvid	T	1	194	6-2	Madison, W. Va.
34	Peel, Ike	B	3	180	5-10	Dyersburg, Tenn.
75	Romine, Dave	G	2	187	5-10	Dorothy, W. Va.
65	Rotella, Al	T	1	200	6-1	Patterson, N. J.
53	Simonetti, Len	T	2	225	6-0	New Philadelphia, O.
19	Slater, Bob	B	1	158	5-10	Providence, R. I.
37	Stapleton, Clay	G	1	185	5-9	Fleming, Ky.
28	Schwartzinger, Jim	B	2	180	5-10	Garfield, N. J.
27	Vick, Warren	E	2	170	6-0	Sweetwater, Tenn.
18	Zimmerman, Bill	B	1	174	5-11	Massillon, Ohio
35	Zontini, Lawrence	B	1	170	5-10	Whitesville, W. Va.

"The Official Watch for Timing Today's Game is Longines — The World's Most Honored Watch."

# TENNESSEE

LE Balitsaris 62	LT Edmiston 50	LG Noel 43	C Graves 55	RG Stapleton 37	RT Simonetti 53	RE Hust 24
LH Butler 22	QB Peel 34	FB Nowling 32	RH Schwartzinger 28			

## SQUAD LIST

No.	No.	No.
10 Cross, e	33 Mulloy, e	51 Connelly, g
11 Gaffney, b	34 Peel, b	52 Field, g
12 Bubbell, B., e	35 Zontini, b	53 Simonetti, t
15 Aurelia, e	36 Francis, t	54 O'Brien, t
16 Hicks, c	37 Stapleton, g	55 Graves, c
18 Zimmerman, b	38 Ledford, t	60 Howard, g
19 Slater, b	40 Hubbell, W., t	62 Balitsaris, e
22 Butler, b	41 Pauley, t	64 Hutchison, t
23 Bevis, b	42 Meyers, g	65 Rotella, t
24 Hust, Al, e	43 Noel, g	66 Hust, E., e
25 King, b	44 Meek, b	67 Graven, g
27 Vick, e	47 Lenahan, e	68 Lloyd, e
28 Schwartzinger, b	48 Chadwell, t	70 Gold, b
29 Partin, b	49 Klarer, g	75 Romine, g
31 Mitchell, b	50 Edmiston, t	76 Fisher, c
32 Nowling, b		77 Cifers, b

## OFFICIALS

Referee .....	Buck Cheves (Ga.)
Umpire .....	Gus Tebell (Wis.)

*At all the Games*

**It's CHESS**





# KENTUCKY

LE Portwood 5	LT Johnson 8	LG Colvin 44	C Walker 41	RG Beeler 22	RT Wood 47	RE Parr 51
---------------------	--------------------	--------------------	-------------------	--------------------	------------------	------------------

LH  
Allen  
2

QB  
Zinn  
27

RH  
Mullins  
40

FB  
Herbert  
24

No.  
2 Allen, h  
5 Portwood, e  
6 Beck, g  
8 Johnson, t  
15 Hoyer, q  
16 Hammer, h  
18 Brown, q  
20 Taylor, e  
21 Boehler, e  
22 Beeler, g  
23 Casner, g  
24 Herbert, h  
25 Sengle, e  
26 Kincer, h

No.  
27 Zinn, q  
28 Hulette, c  
29 Black, h  
30 Welbourn, g  
31 Jaracz, t  
32 Graban, g  
33 Preston, g  
34 Jones, h  
35 Kuhn, h  
36 Althaus, e  
37 Schifer, t  
38 Triplette, c  
39 Eblen, e

No.  
40 Mullins, h  
41 Walker, C., c  
42 McClure, t  
43 Walker, G., e  
44 Colvin, g  
45 Mitchell, h  
46 Schlegle, t  
47 Wood, t  
48 Cutchin, h  
50 Hammond, h  
51 Parr, e  
52 Oenbrink, t  
53 Bell, h  
55 Hurst, g

## OFFICIALS

Linesman ..... George Gardner (Ga. Tech)  
Field Judge ..... H. G. Mouat (Armour)

# CHESTERFIELD

*They Satisfy*

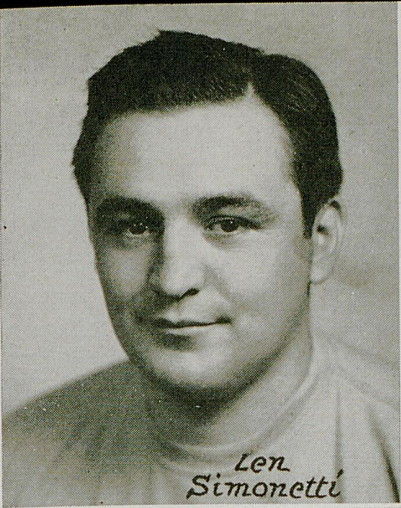


1941

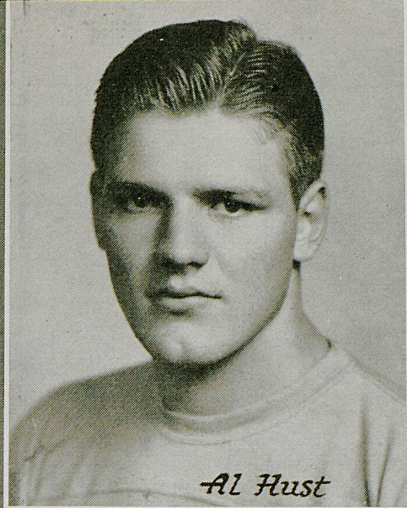
KENTUCKY SQUAD  
ROSTER

1941

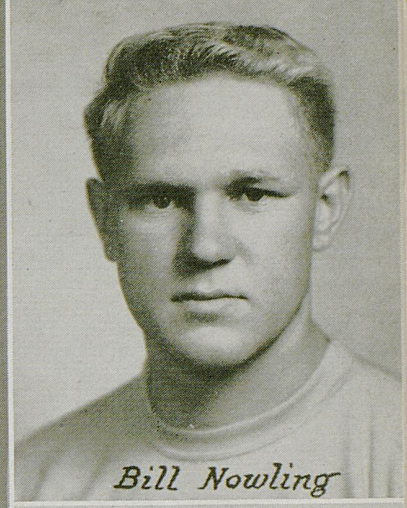
No.	Name	Position	Years on Squad	Weight	Height	Home
2	Allen, Ermal	HB	3	155	5-11	Morristown, Tenn.
36	Althaus, Carl	E	1	180	6-3	Louisville, Ky.
6	Beck, Norm	G	2	180	6	Louisville, Ky.
22	Beeler, Bob	G	2	200	6	Bardstown, Ky.
53	Bell, Tom	HB	1	145	5-7	Lexington, Ky.
29	Black, Bill	HB	2	175	6	Paducah, Ky.
21	Boehler, Don	E	1	180	6-1	Lorain, Ohio
18	Brown, Dave	QB	3	165	5-9	Paducah, Ky.
23	Casner, Jack	G	2	180	6	Fort Thomas, Ky.
44	Colvin, Arch	G	1	190	6	Bardstown, Ky.
48	Cutchin, Phil	HB	1	175	6	Murray, Ky.
39	Eblen, Charles	E	1	175	6	Ashland, Ky.
32	Grabam, Steve	G	2	185	5-9	Campbell, Ohio
16	Hammer, Randall	HB	1	170	5-11	Tomkinsville, Ky.
50	Hammond, Claude	FB	3	160	5-10	Williamson, W. Va.
24	Herbert, Bob	FB	2	190	5-11	Fairmont, W. Va.
15	Hoyer, Eric	QB	1	170	5-11	Chicago, Ill.
28	Hulette, Sam	C	3	200	6	Ashland, Ky.
55	Hurst, John	QB	1	175	5-11	Evansville, Ind.
31	Jaracz, Ted	T	1	195	6-2	Lowell, Mass.
8	Johnson, Clyde	T	2	225	6-6	Ashland, Ky.
34	Jones, Junior	HB	3	165	5-10	Louisville, Ky.
26	Kincer, Bill	FB	2	180	5-10	Kona, Ky.
35	Kuhn, Charles	HB	1	175	6-1	Louisville, Ky.
42	McClure, Charles	T	1	195	6	Benton, Tenn.
45	Mitchell, Bill	HB	3	150	5-9	Madisonville, Ky.
40	Mullins, Noah	HB	3	170	6	Versailles, Ky.
52	Oenbrink, Bob	G	1	195	6-2	New Albany, Ind.
51	Parr, Allen	E	2	180	6-3	Louisville, Ky.
5	Portwood, Bill	E	1	175	6-2	Midway, Ky.
33	Preston, Leo	G	1	188	6	Louisville, Ky.
37	Schifler, Charles	T	1	220	6	Louisville, Ky.
46	Schlegle, George	T	2	205	6-2	Huntington, W. Va.
25	Sengle, George	E	1	170	5-11	Louisville, Ky.
20	Taylor, Henry	E	2	185	6	Cynthiana, Ky.
38	Triplette, Pete	C	1	185	6	Lexington, Ky.
41	Walker, Charles	C	1	200	6-2	Corbin, Ky.
43	Walker, George	C	1	180	5-11	Detroit, Mich.
30	Welbourn, Bill	G	1	180	5-11	Madisonville, Ky.
47	Wood, Clark	T	2	205	6-2	Huntington, W. Va.
27	Zinn, Tommy	QB	2	175	5-11	Burnsville, W. Va.



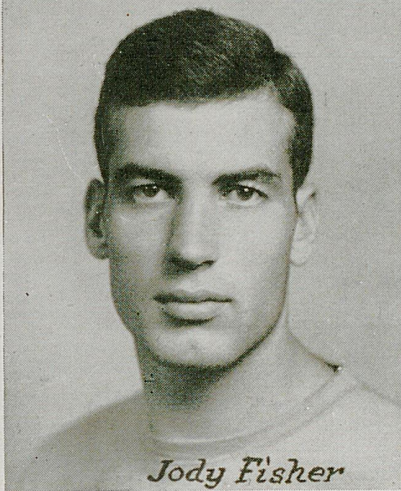
*Len  
Simonetti*



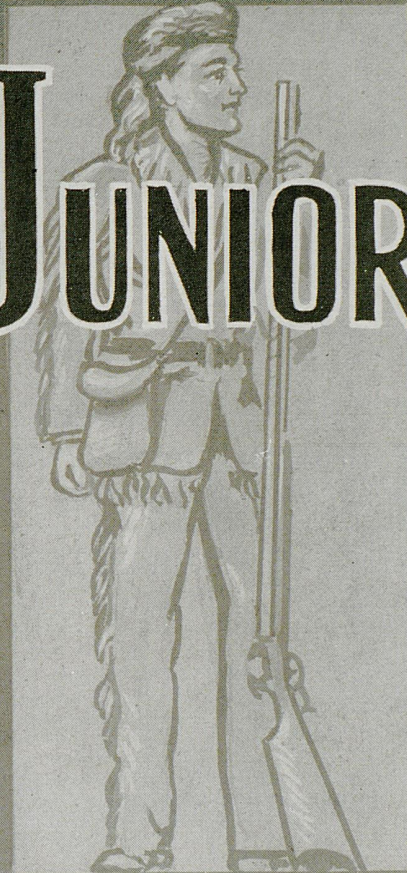
*Al Hust*



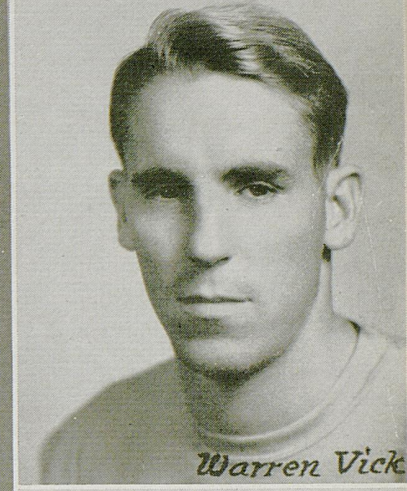
*Bill Nowling*



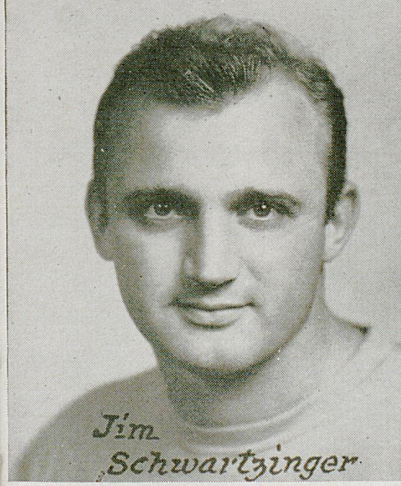
*Jody Fisher*



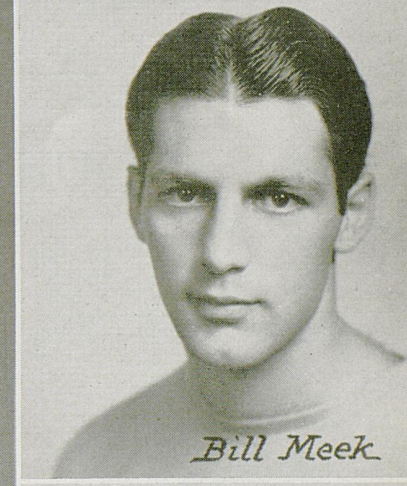
# JUNIORS



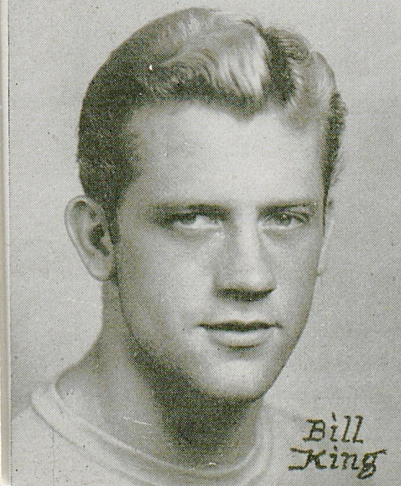
*Warren Vick*



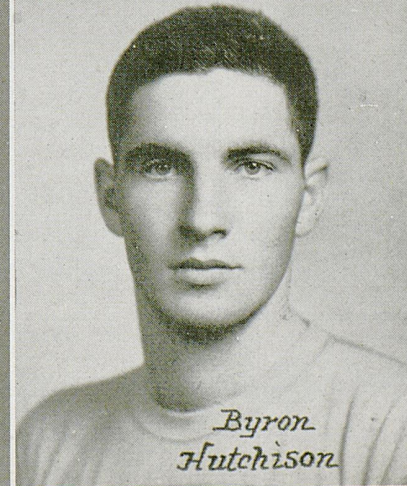
*Jim  
Schwartzynger*



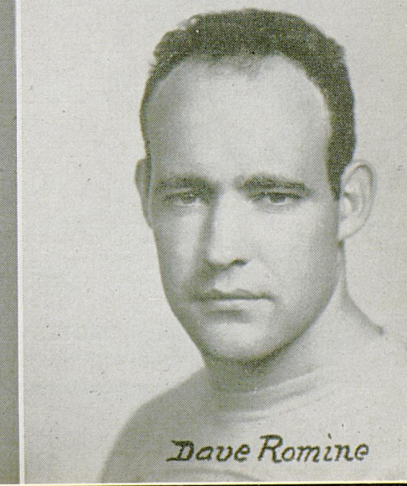
*Bill Meek*



*Bill  
King*



*Byron  
Hutchison*



*Dave Romine*

B R E A D  
IS  
E N E R G Y  
EAT



IF YOU WANT  
QUICK STARTING,  
SPEED, POWER  
USE  
RED PEPPER  
BETTER ETHYL  
GASOLINE

Ashland Oil & Refining  
Company

REFINERS and DISTRIBUTORS

Elmer Rix, Local Mgr.

Lexington,

Kentucky

ATHLETIC  
EQUIPMENT  
For Every Sport

---

WHOLESALE PRICES  
TO SCHOOLS AND COLLEGES

Write for Catalog

---

The Sutcliffe Co.

Incorporated

LOUISVILLE, KY.

BE SURE  
IT'S

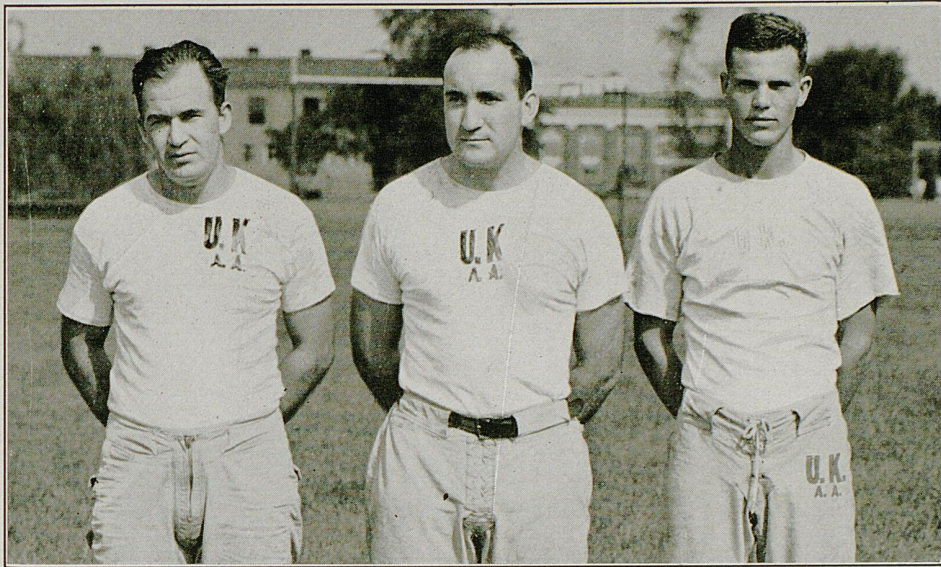


ICE CREAM

Distributors

Birdseye Frosted Foods

## Kentucky Freshman Coaches



Shepherd

Meyers

Montgomery

## TRANSYLVANIA PRINTING CO.

Incorporated

Printers—Stationers—Office Outfitters

DANCE FAVORS AND GIFTS FOR ALL OCCASIONS

PARKER — SHEAFFER — EVERS HARP FOUNTAIN PENS

CHRISTMAS CARD HEADQUARTERS

From 50 for \$1.00 with Name to \$1.00 or more per card

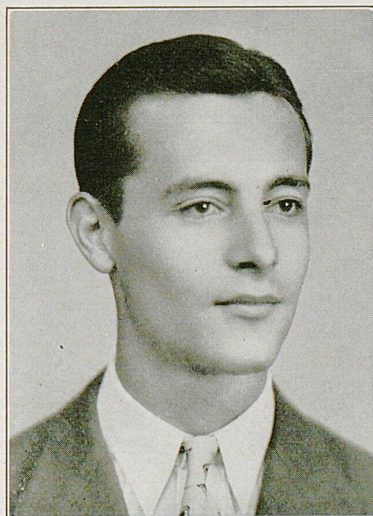
108 N. Upper St.

Established 1872

Phone 35



FRANK MANN  
Trainer



JAMES TAYLOR  
Senior Manager



S. C. BROWN  
Equipment Manager

Be Better Fitted In **Baynham's** Shoes Of Distinction

Keep Attuned To The Style Trends With Baynham's — Smart, Comfortably Designed Shoes For Active Men And Women



**The Quarterback  
By Belden**

A Handsome Wing Tip Brogue for The Man Who Cares  
\$4.95



**Cheerleader**

... A Smart Spectator Pump for the Outdoor Woman  
Black or Brown  
\$4.95

135 E. MAIN

NOW OPEN

# Colonial Bowling Lanes

EUCLID AVE. — Opposite U. K. Stadium

**BOWLING**  
FOR LADIES AND GENTLEMEN



● 12 Lanes

● Brunswick Centennial Equipment

*"Designed by the Bowlers — For Bowlers"*

**SANDWICHE  
GRILLE**  
and Fountain Service  
**CURB SERVICE**  
Ample Parking Space

**LOCKER ROOMS**  
For Ladies and Gentlemen

**AIR CONDITIONED**



Above: Impressive College of Agriculture building on the University of Florida campus.

Below: The band boys serenade some of the University administrative officers aboard the special, and the result is a little close harmony by Frank Wright, LeRoy Schoch, and Klein Graham.



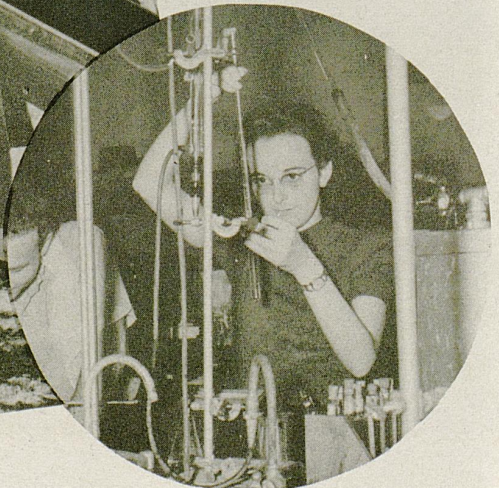


Above: Auburn co-eds while away many happy hours playing that old sea-going game of shuffle board.

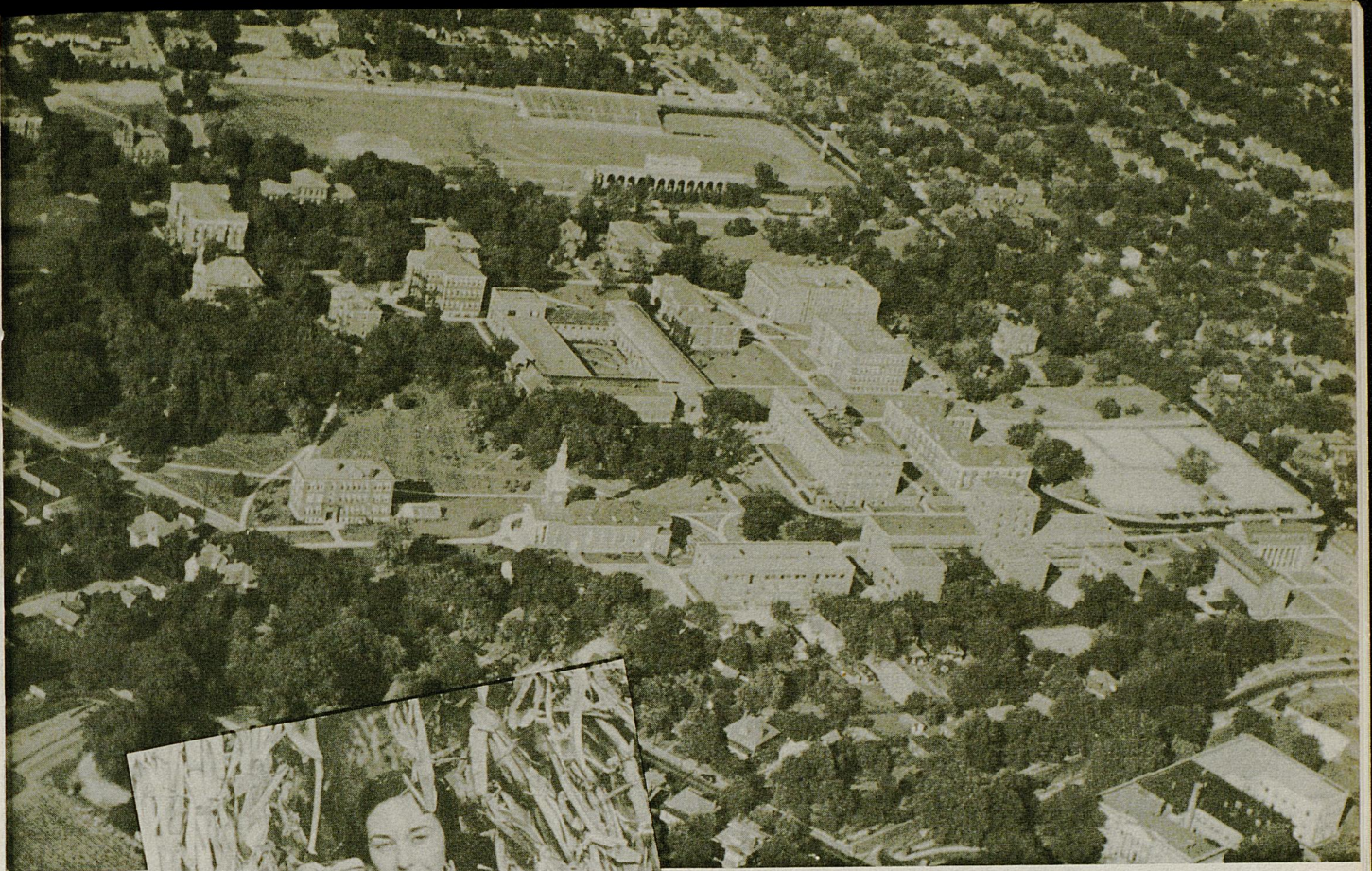


Left: The nursery school on the Auburn campus provides pleasure for the youngsters, and freedom for the mothers.

Circle: Chemistry lab is a time for serious concentration.



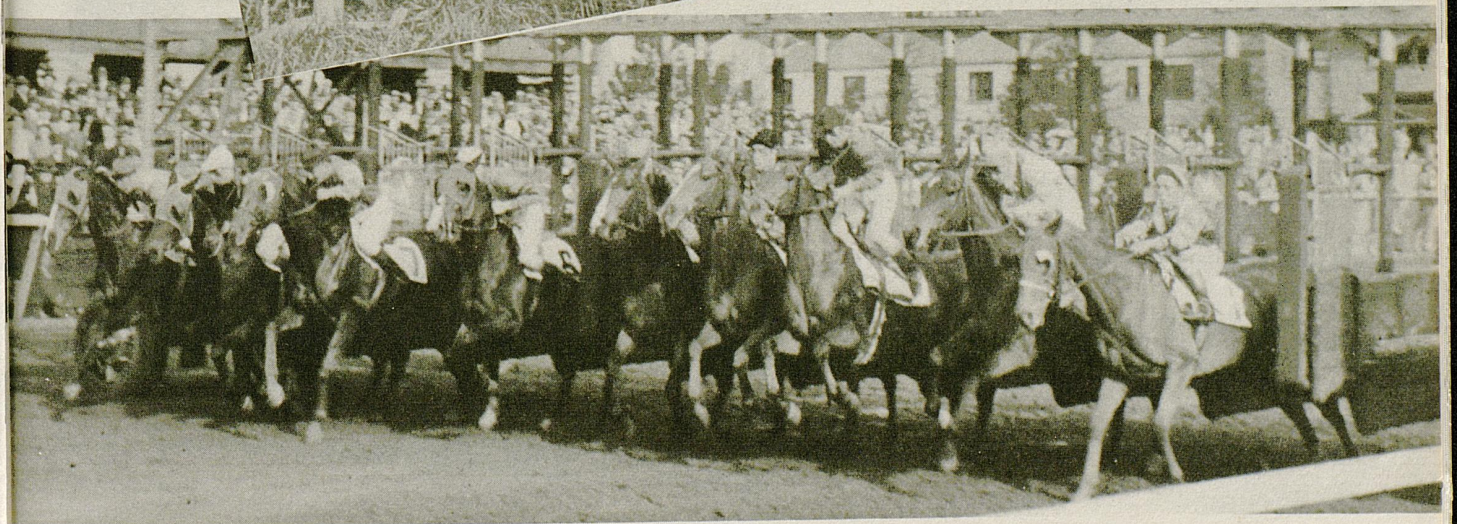




Above: An eagle's eye view of the University of Kentucky showing buildings and campus.

Left: How can a pumpkin scare you when it has such a charming background. Kentucky co-eds in a Halloween setting.

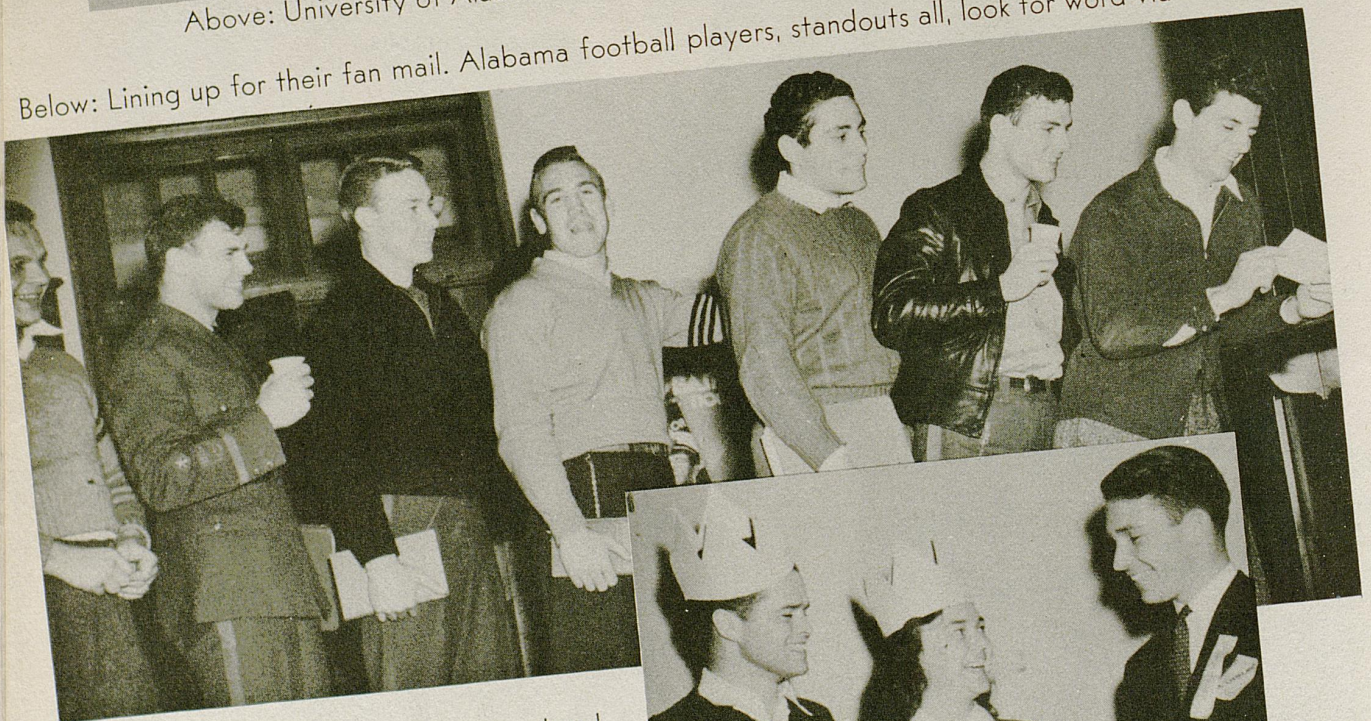
Below: They're Off! A fast start at Keeneland.



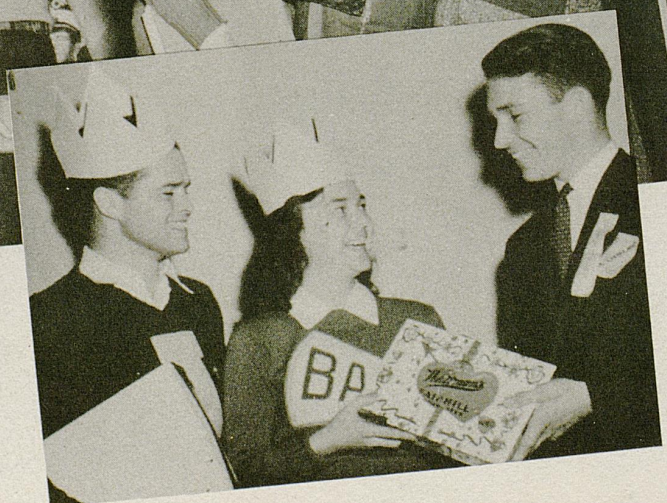


Above: University of Alabama co-eds in a late afternoon workout on the shuffle boards.

Below: Lining up for their fan mail. Alabama football players, standouts all, look for word via the U. S. Mail.



Right: A pretty 'Bama co-ed and her escort receive award for election as Mr. and Mrs. Friendliness.





**The Stirrup Cup**  
MAIN AND ASHLAND

**After the Game**  
**FOXY FRANK**

That hale fellow, well met, friend of football appetites, Foxy Frank—frank cooked in butter, grilled in a bun with cheese and mustard and pickle relish; served on the curb or inside at the Stirrup Cup, Lexington's convenient drive-in eating places. Lunches, dinners, sandwiches, sodas.

The original "Betty Co-ed" was a student at the University of Tennessee.

It was back in 1794 that a young woman took a seat alongside men in a college classroom to inaugurate co-education in the United States. The college was Blount College, predecessor of the University of Tennessee. The student was Barbara Blount, comely daughter of Governor William Blount of "The Northwest Territory," which two years later became Tennessee. Hence the University of Tennessee was established two years before Tennessee became a state.

Even more democratic in its nature, the embryonic University of Tennessee was the first non-denominational college in America.

The University of Tennessee got its nickname—"Volunteers"—from the nickname of the state. Tennessee became known as the "Volunteer State" during the Mexican War when the War Department issued a call for 2,800 men and 30,000 eager soldiers volunteered for service.

Today the University of Tennessee is the keystone of Tennessee's educational system, consisting of eight major colleges and schools—each as large as the average "college" in the nation—and additional research and extension units. Its Agricultural and Engineering Colleges and its School of Home Economics have long been among the leaders of America. Also, its Colleges of liberal Arts, Law, and Education and its School of Business Administration and medical units have rated high.

This Space Reserved  
for  
**A. G. SPALDING & BROS.**  
makers of  
**ATHLETIC EQUIPMENT**

**Tip To You For 42**  
**"BETTER BUY BUICK"**

"When better automobiles are built  
Buick will build them"

**Shug Glenn Buick**  
**SALES and SERVICE**

436 West Main

Ph. 741-742

Students in residence at the University of Tennessee number 4,435, including persons from 34 states, some from California, and three foreign countries. This figure does not include the thousands served by correspondence courses and extension projects.

The main campus of the University of Tennessee is located in Knoxville, in scenic East Tennessee. Less than a hundred miles to the east is the Great Smoky Mountains National Park, whose towering mountains and dashing streams attract hundreds of thousands of tourists each year. The main campus itself is located on a circular hill, some 40 acres in size, and students refer to the campus as "The Hill."

The University of Tennessee campus is considered one of the most beautiful in America.

**JOHN G. EPPING**

**Bottling Works**

264 Walton Ave.

LEXINGTON, KY.



GO YOU

# WILDCATS

Hit 'Em Hard!

Hit 'Em Low!



## CHRYSLER U-DRIVE-IT CO.

134 E. Short St. — Phone 8552

Cars and Trucks For Rent

RATES AS LOW AS 10c PER MILE

## CENTRAL TOBACCO CO.

CANDY AND TOBACCO SUPPLIES

225 Walnut St.

Phone 625

## GILSON and TAYLOR

GENERAL CONTRACTORS

Lexington, Ky.

## H. Rudig & Sons

GLASS—MIRRORS—PAINTS—BRUSHES

STORE FRONT AND GLAZING CONTRACTORS

Office & Retail: 149 W. Short, Wholesale: 148 Church

PHONES 327 - 328

## Faulkner Builders & Supply Co.

BUILDERS SUPPLIES — COAL

585 East Third St.

Phone 2340

"BUY THE BEST—IT'S CHEAPER"

"SURE  
I'LL MEET YOU AT THE  
PHOENIX DRUG"

Phoenix Hotel Block

DRINK  
Lexington Dairy  
MILK

## Hempel's

Southern Dye Works

(Established 1883)

BENZOL DRY CLEANING

380 E. Main Street

Cor. Southeastern Ave.

LEXINGTON, KENTUCKY

## UNITED SERVICE

(Incorporated)

176 E. High St.

Phone 6331

Motor Tune-Up The Modern Way

Compliments of

## Lexington Yellow Cab

Incorporated

TAXICABS

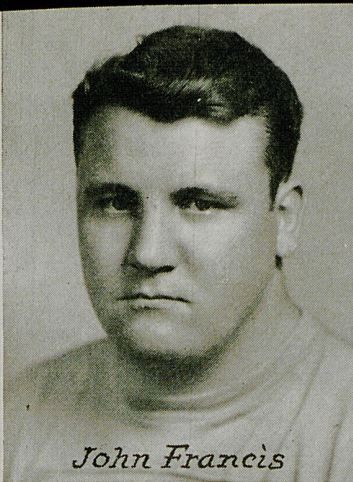
Compliments of

## Bryan - Hunt Company

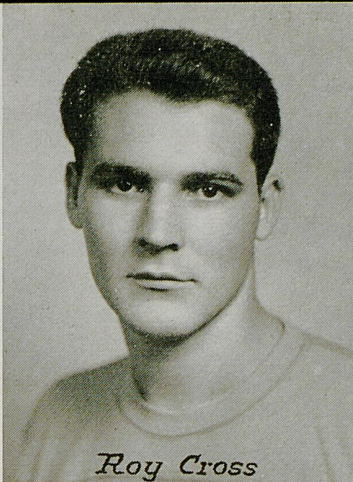
Incorporated

WHOLESALE GROCERS

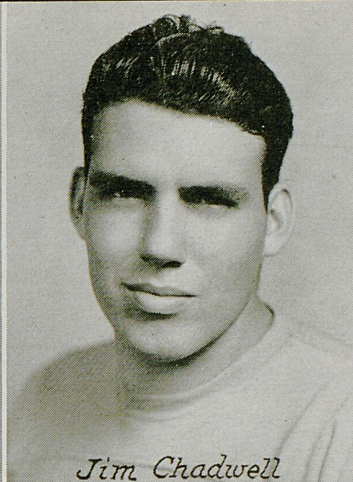
Lexington, Kentucky



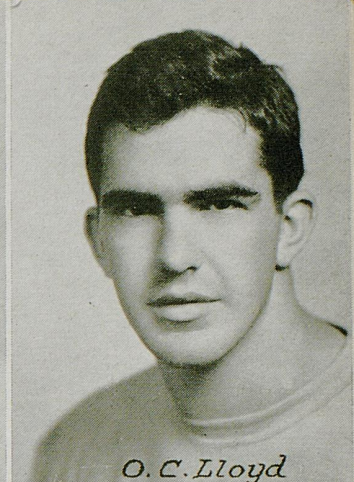
*John Francis*



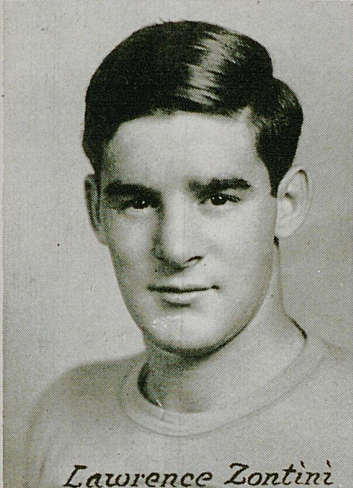
*Roy Cross*



*Jim Chadwell*



*O.C. Lloyd*



*Lawrence Zontini*



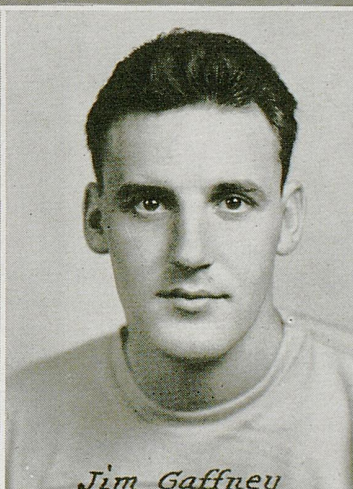
*Denny Ledford*



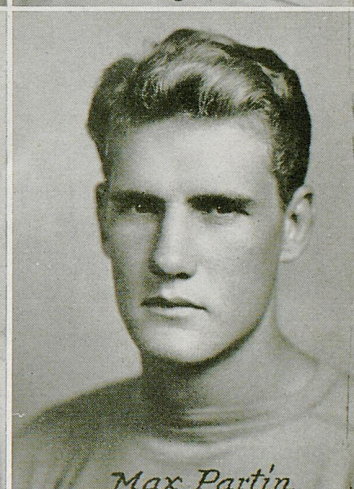
*Orvid Pauley*



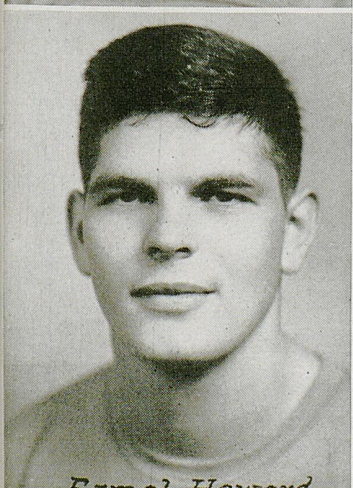
*Al Rotella*



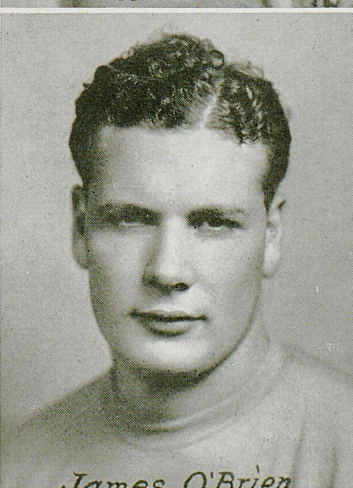
*Jim Gaffney*



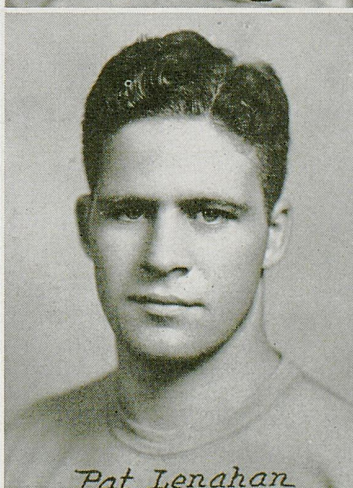
*Max Partin*



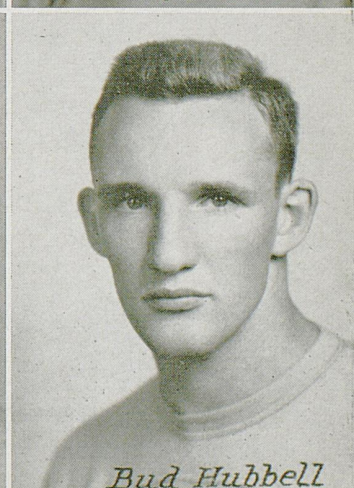
*Ermal Howard*



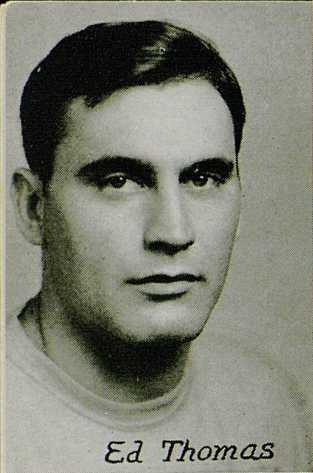
*James O'Brien*



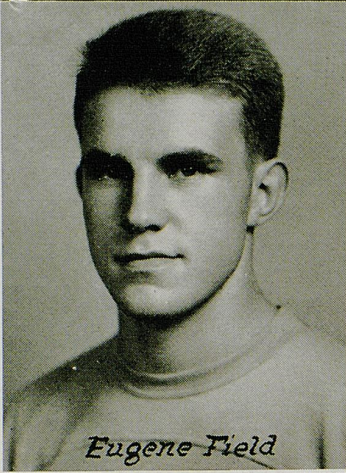
*Pat Lenahan*



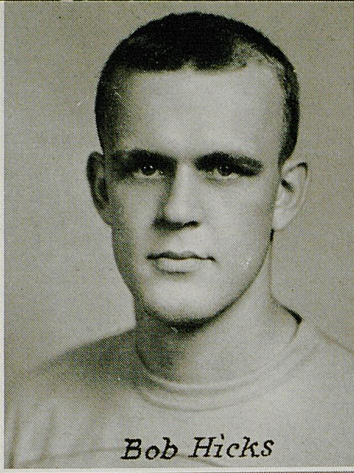
*Bud Hubbell*



*Ed Thomas*



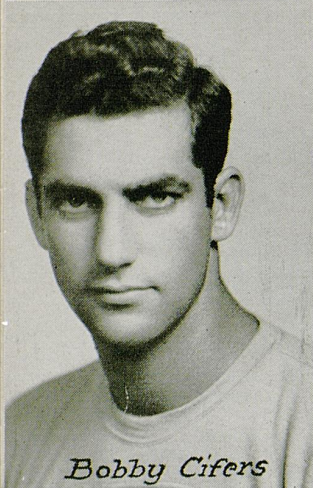
*Eugene Field*



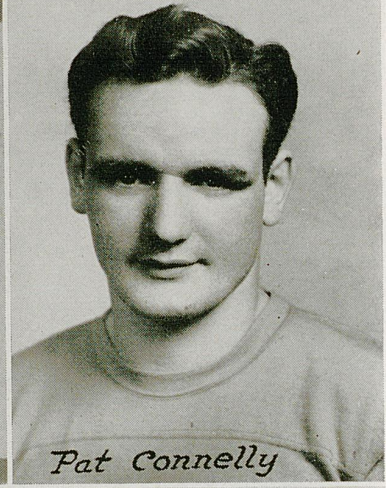
*Bob Hicks*



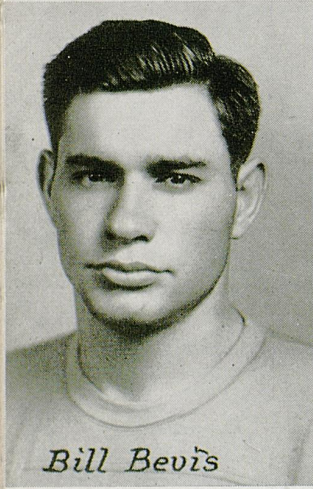
*Walter Slater*



*Bobby Cifers*



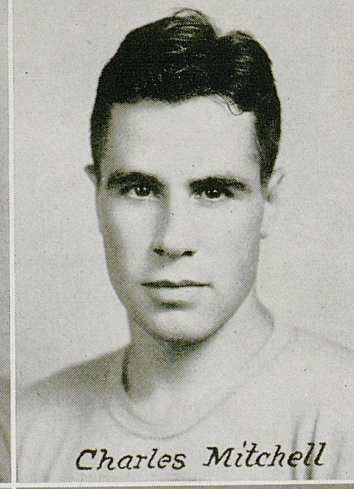
*Pat Connelly*



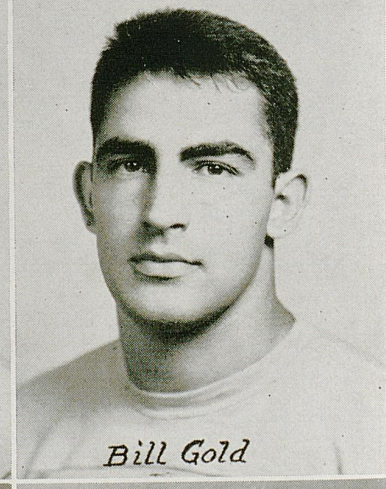
*Bill Bevis*



*Clay Stapleton*



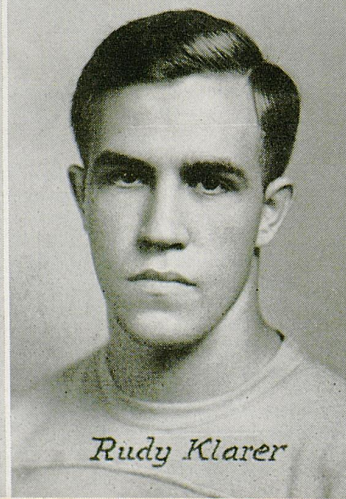
*Charles Mitchell*



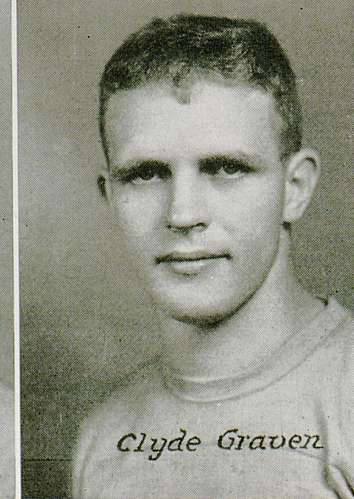
*Bill Gold*



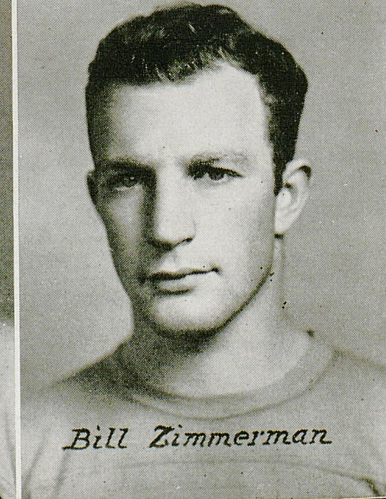
*Jim Meyers*



*Rudy Klarer*



*Clyde Graven*



*Bill Zimmerman*

The Best In  
**Athletic Knitwear**

King's Knit Goods are Now  
Recognized as Leaders in  
All Athletic Contests

**King Sportswear Co.**

1115 North Franklin Street  
CHICAGO, ILLINOIS

**FORD 6 & 8**

**MERCURY 8**

**LINCOLN 12**

**BETTER USED CARS**  
All Makes



**Reinhardt-Gaidry Motors**

180 E. High

Phone 6970

**"HIGHEST TRADERS IN TOWN"**

**The official football  
timing watch for**

**UNIVERSITY OF KENTUCKY**

*Longines*

**THE WORLD'S MOST HONORED WATCH**

Longines Watches, appointed official timepiece for this football game, were also used for official timing for the 1941 A.A.U. and I.C.4A Track Championships, the National A.A.U. Men's and Women's Swimming Championships, and many other important sports events. Longines Watches were selected as exclusive official timepiece for the 1940 Olympics. Among many associations which have chosen Longines Watches as official timepiece are National Aeronautic Association, American Automobile Association, and U. S. Polo Association.

Other honors bestowed upon Longines Watches for accuracy and elegance include 10 world's fair grand prizes and 28 gold medal awards. Throughout the world, no other name on a watch means so much as Longines, *The World's Most Honored Watch*.

*Watches of accuracy  
and elegance by Longines*



The skill, experience, and workmanship necessary for the construction of Longines Watches for precision timing, aviation and navigation are reflected in the greater accuracy of every Longines Watch at any price. Longines jewelers show Longines personal watches of distinction from \$40 upward; also Wittnauer Watches from \$24.75, products of—  
Longines-Wittnauer Watch Co., Inc., 580 Fifth Avenue, New York, N. Y.

THE PLACE TO MEET

THE PLACE TO DINE

is

**THE  
BLUE GRASS ROOM**

(Kentucky's Most Beautiful Cocktail Room)

of

**HOTEL PHOENIX**

LEXINGTON, KY.



Drink *Double Cola*

SERVE AT BRIDGE

363 E. Main St.

Lexington, Ky.

TOUGH AND STRONG  
LASTS TWICE AS LONG



MULE-HIDE ASPHALT SHINGLES  
"NOT A KICK IN A MILLION SQUARE  
FEET."

Let Us Give You A Free Estimate  
On A Better  
More Attractive Roof  
And

NOW LET'S ROOT FOR KENTUCKY TO WIN

**Smith-Haggard Lumber Co.**

Incorporated  
Building Contractors

901 East Third St.

Lexington, Ky.

DODGE AND PLYMOUTH  
CARS AND TRUCKS

SEE THE 1942 MODELS

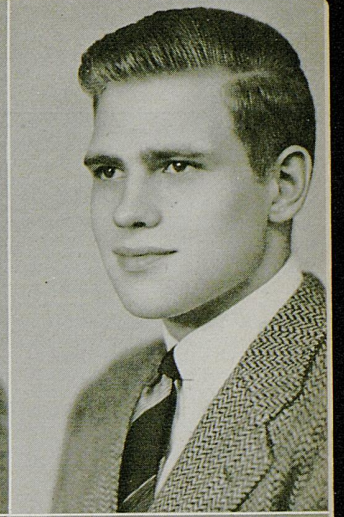
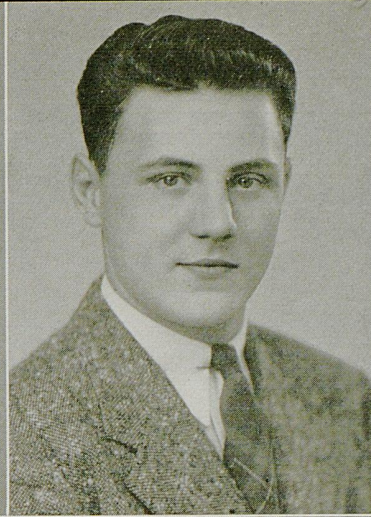
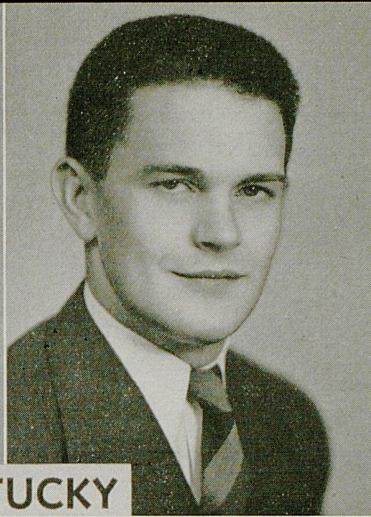
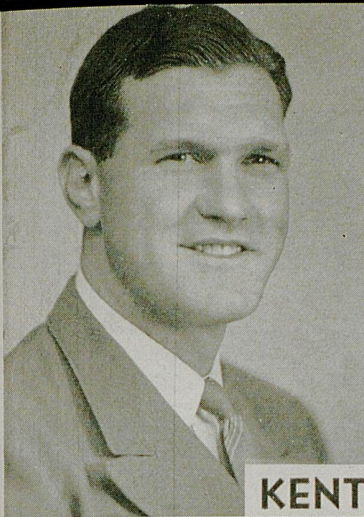
NOW ON DISPLAY

**GOODWIN BROTHERS**

MAIN and RANSOM

"Your Dependable Dodge Dealer  
Since 1916"





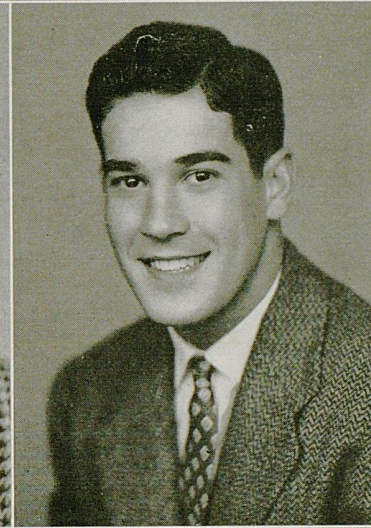
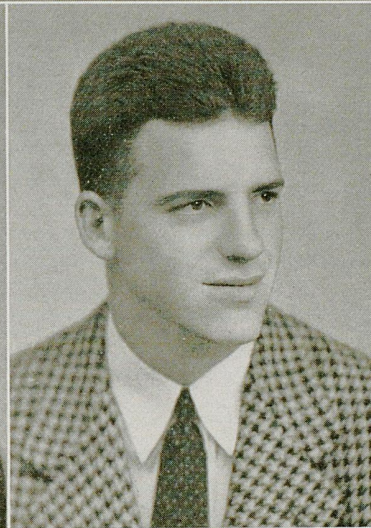
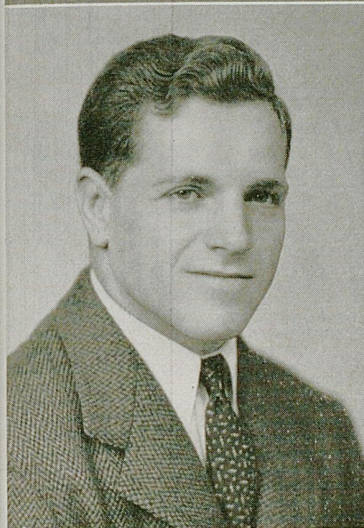
**KENTUCKY**

**CHARLES McCLURE**  
Tackle

**THOMAS EWING**  
Quarterback

**ALBERT W. SPECIUS**  
Fullback

**EVIE HOYER**  
Quarterback

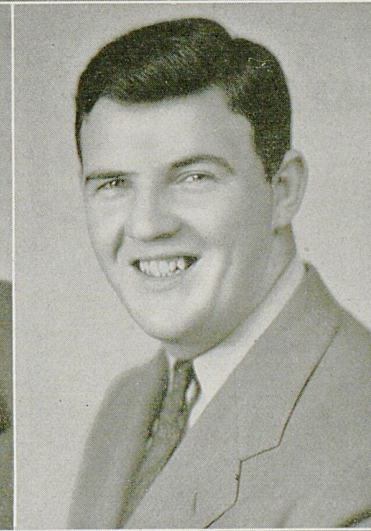
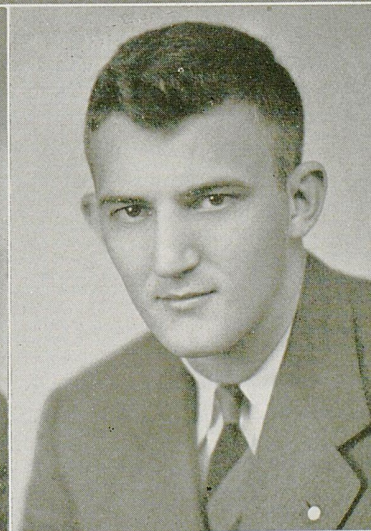


**STEVE GROBAN**  
Guard

**DON W. BOEHLER**  
End

**BILLY BLACK**  
Halfback

**RANDALL HAMMEL**  
Halfback



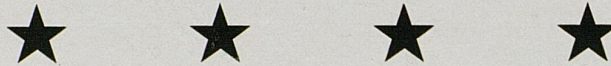
**WILLIAM WELBOUNE**  
Guard

**CHARLES EBLEN**  
End

**CHARLES SCHIFFLER**  
Tackle

**ROBERT OENBRINK**  
Guard

# BOOSTERS



Ades-Lexington Dry Goods Co.  
 Angellucci and Ringo  
 Baynham Shoe Company  
 Bank of Commerce  
 Brock-McVey Company  
 Fred Bryant Motor Company  
 Canary Cottage  
 L. R. Cooke Chevrolet Co.  
 De Boor Laundry & Dry Cleaning  
 Dixie Ice Cream  
 First National Bank & Trust Co.  
 Graves Cox and Company

Guy Hugelot  
 Kaufman Clothing Co.  
 Kentuckian Hotel Co.  
 Kentucky Utilities Co.  
 Lafayette Hotel Company  
 Lexington Herald-Leader  
 Lexington Railroad System  
 Lexington Telephone Co.  
 Lexington Yellow Cab Co.  
 Mayfair Bar  
 Meyer and Hinkle  
 W. R. Milward  
 Mitchell, Baker & Smith Co.

Phoenix Hotel  
 Purcell Company, Inc.  
 Smith Watkins Company  
 Southeastern Greyhound  
 Tinder, Krauss & Tinder  
 Transylvania Printing Co.  
 Union Bank & Trust Co.  
 Union Transfer & Storage Co.  
**WLAP**  
 Wolf, Wile Company  
 Wombwell Automotive Parts Co.  
 Wright, F. H.

Mr. James H. Alexander  
 Mr. M. W. Allen  
 Dr. Kenneth R. Andrews  
 Mr. Richard Barker  
 Mr. Ernest B. Bradley  
 Mr. R. T. Benton  
 Mr. William Bush  
 Dr. W. T. Briggs  
 Mr. B. Carmichael  
 Carpenter-Warren Ins. Agency  
 Mr. Leo M. Chamberlain  
 Mr. A. L. Chambers  
 Mr. Sterling T. Chase  
 Combs Lumber Company  
 Mr. E. S. Dabney  
 Dr. J. S. Dailey  
 Mr. Pat Devereux  
 Mr. P. B. Dunn  
 Dr. E. Cronley Elliott  
 Mr. W. R. Embry  
 Dr. Clenet R. Ellis  
 Mr. Dan S. Estill  
 Mr. R. R. Estill  
 Mr. Tom A. Gooding  
 Goodwin Bros. Inc.  
 Mr. J. Frank Grimes

Mr. Lee Land Hanks  
 Mr. William Harting  
 Hester Clothing Company  
 Mr. H. H. Hill  
 Mr. Louis E. Hillenmeyer  
 Mr. O. S. Honaker, Jr.  
 Mr. O. S. Honaker, Sr.  
 Mr. R. M. Honaker  
 Mr. Guy A. Hugelot  
 Mr. Bill Hunt  
 Dr. Charles N. Kavanaugh  
 Kentucky Hatchery.  
 Mr. Garvice D. Kincaid  
 Mr. Justin McCarthy  
 Mr. Claude Roy McGaughey, Jr.  
 Dr. J. S. McGinnis  
 Mr. Dixie McKinley  
 Miss Marguerite McLaughlin  
 Dr. C. Grandison McLean  
 Mr. Joe Mangione  
 Mr. C. N. Manning  
 Dr. E. S. Maxwell  
 Mr. J. C. Meadors  
 Mr. Emanuel Meyers  
 Mr. Wallace Muir

Mr. E. J. Murray  
 Mr. H. O. Newman  
 Mr. J. C. Nichols  
 Mr. Paul Nickell  
 Mr. Peter Orphanos  
 Dr. Stanley S. Parks  
 Mr. J. T. Perry  
 Mr. Alfred G. Powell  
 Mr. W. H. Ramsey  
 Dr. E. H. Ray  
 Mr. John Reed  
 Mr. J. Owen Reynolds  
 Mr. Elmer Rix  
 Mr. Louis Rosenberg  
 Mr. R. E. Shaver  
 Mr. J. Robert Smith  
 Mr. Chester Spurlock  
 Standard Typewriter Company  
 Mr. Franklin W. Stevenson  
 Dr. D. V. Sublett  
 Mr. D. V. Terrell  
 Mr. Clifton Thompson, Jr.  
 Dr. Charles Vance  
 Mr. S. A. Wallace  
 Mr. Cecil C. Wathen  
 Mr. Curtis L. Willmott



GO YOU

# WILDCATS



Hit 'Em Hard!

Hit 'Em Low!

## Union Transfer & Storage Co.

MOVING AND STORAGE

Spring and Vine Streets

Phone 7030

"We Never Disappoint"

## Howard & Heafey

FLORISTS

Phones 404 - 440

Winchester Road

Lexington, Ky.

## The Sherwin-Williams Co.

All You Need to Know About Paint

350 W. MAIN STREET

PHONE 8100

## Skuller's

Lexington's Leading Jeweler and Silversmith

115 W. Main St.

Lexington, Ky.

Official Photographers for 1942 Kentuckian  
All Kentuckian negatives are on file at our studios.

## Lafayette Studio

141-143 N. Lime

Phone 6271

ACTION PICTURES OUR SPECIALTY

## O. E. LYONS COMPANY

ELECTRIC LIGHTING FIXTURES

343 E. Main

Phone 365

## RODES ARNSPIGER

INSURANCE

120 N. Upper

Lexington, Ky.

Compliments of

LEET BROTHERS FURNITURE STORE

Main and Broadway

## Wenneker's Sample Shoe Store

FAMOUS BRANDS SOLD ELSEWHERE \$7.50 to \$16.50  
SOLD HERE AT \$2.95-\$3.95-\$4.95. Others to \$6.85

153 E. MAIN ST.

Next To Strand Theatre

## Candioto Piano Co.

Pianos, Radios and Musical Instruments

351 W. Main St.

Phone 513

Lexington, Ky.

YOU'LL  
FIND



"CAROLYN"  
HERE!

# B. B. Smith & Co.

(Incorporated)

## Fred Bryant Motor Co.

Union Station Viaduct

Sales — OLDSMOBILE — Service

Lexington, Ky.

# Campus Book Store

AGENTS FOR

## “CHAMPION”

SPORT SHIRTS

POLO SHIRTS

TENNIS SHORTS

SWEAT SHIRTS

CAMPCRAFT EMBLEMS

BANNERS

Champion Knitwear Company



Use Our  
ZORIC SYSTEM  
for  
Better Cleaning

ZORIC Cleaning Is Odorless

SUITS . . . . . 60c

DRESSES . . . . . 60c

Work Called For and Delivered

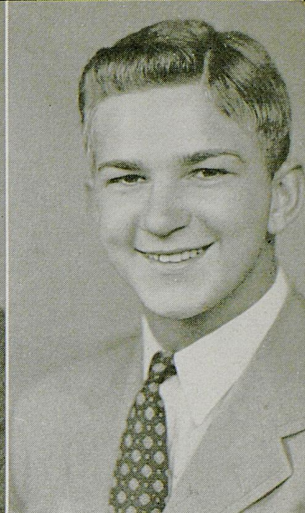
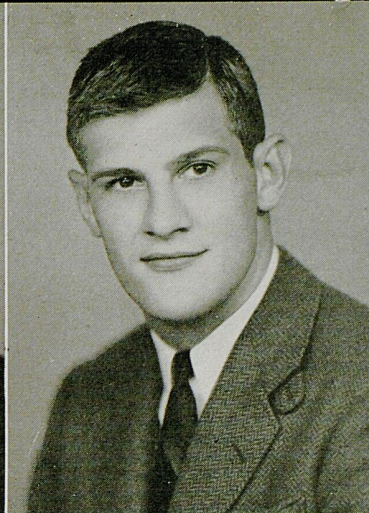
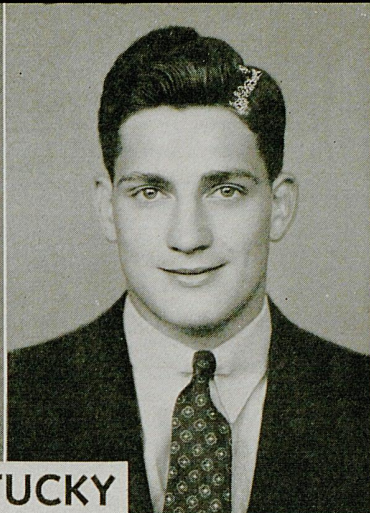
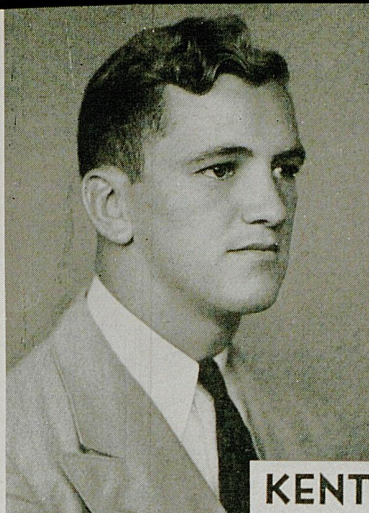
## CROPPER'S LAUNDRY

(Incorporated)

OFFICE — 137 North Lime

Phone 210

JOHN B. MYLOR, President



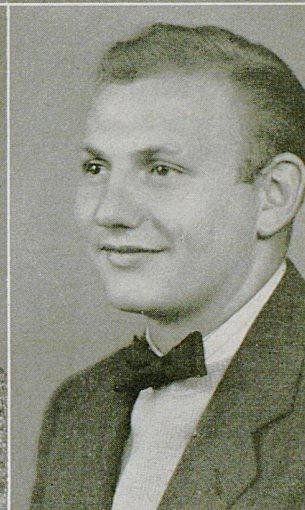
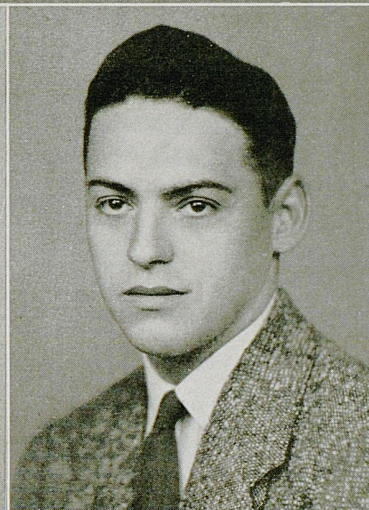
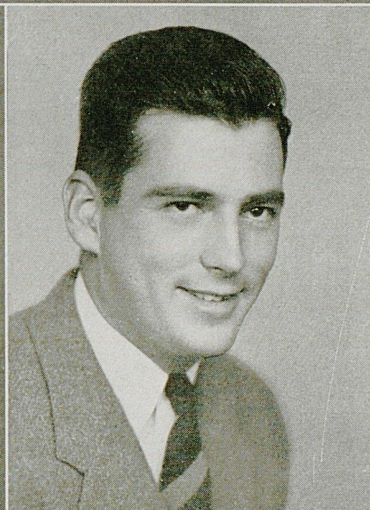
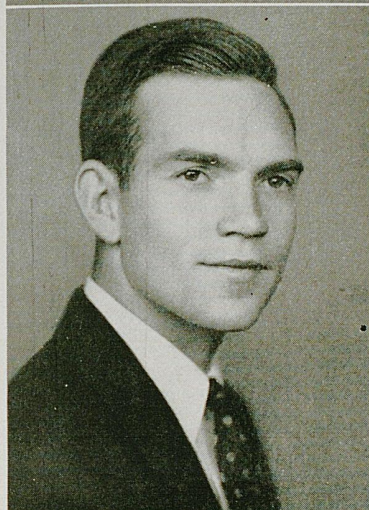
**KENTUCKY**

**CHAS. JONES, JR.**  
Halfback

**CLAUDE HAMMON**  
Fullback

**ALAN PARR**  
End

**ROBERT BEELER**  
Guard

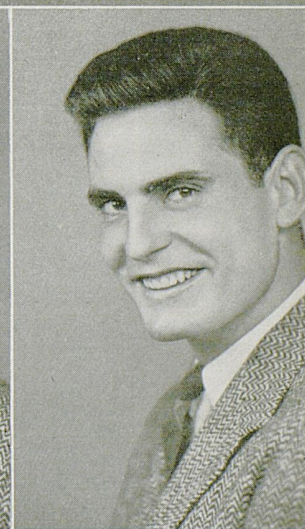
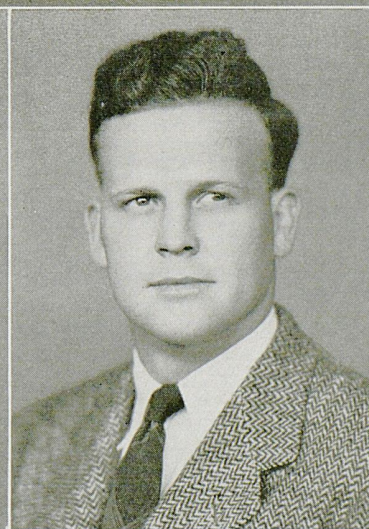
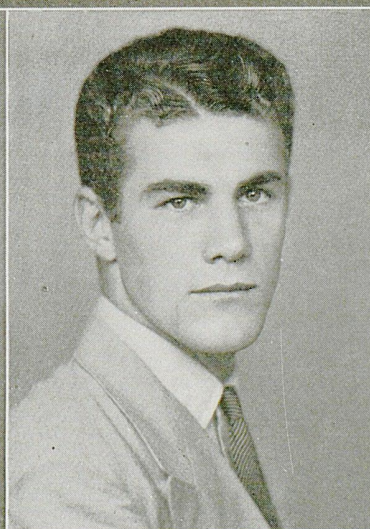
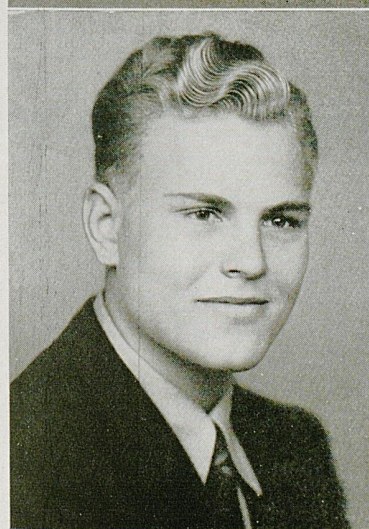


**NOAH MULLINS**  
Halfback

**HARRY TAYLOR**  
End

**DAVID BROWN**  
Quarterback

**SAM HULETT**  
Center

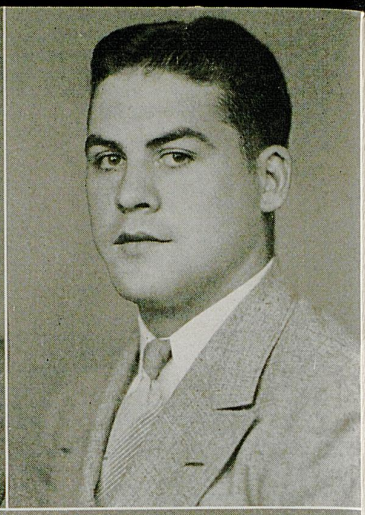
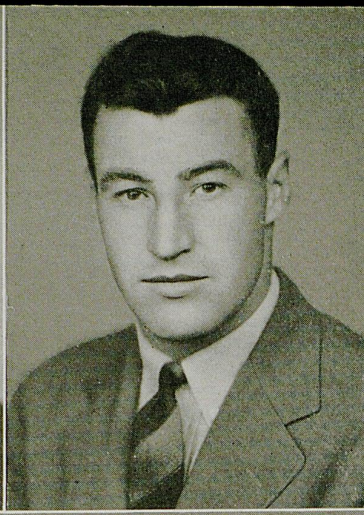
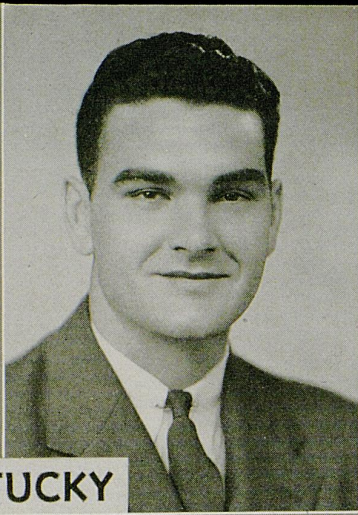
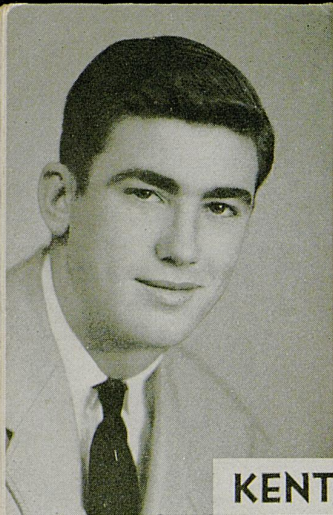


**CLARK WOOD**  
Tackle

**ERMAL ALLEN**  
Halfback

**CHAS. WALKER**  
Center

**ROBERT HERBERT**  
Fullback



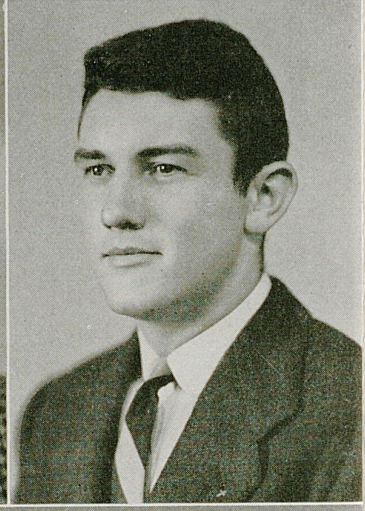
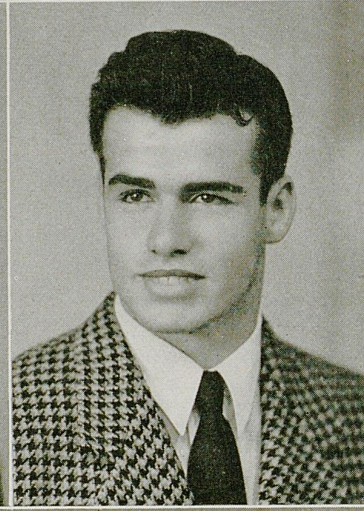
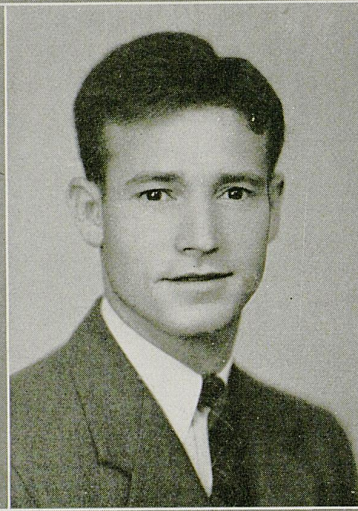
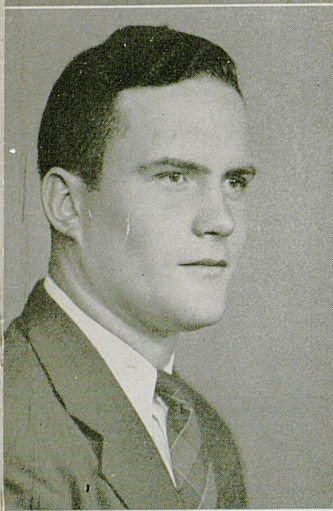
**KENTUCKY**

**CHARLES KUHN**  
Halfback

**CLYDE JOHNSON**  
Tackle

**THOMAS ZINN**  
Quarterback

**WILLIAM KINCER**  
Fullback

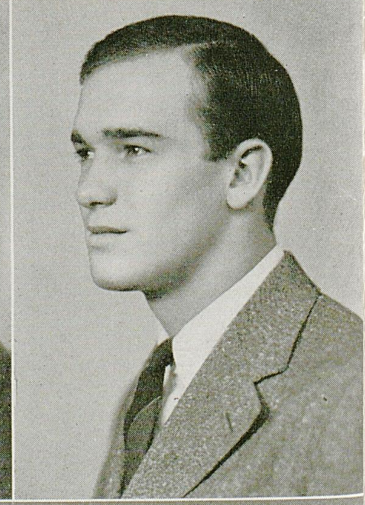
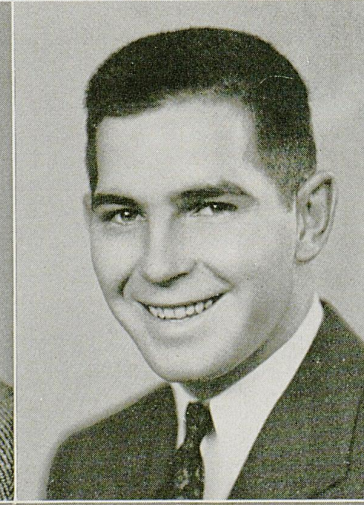
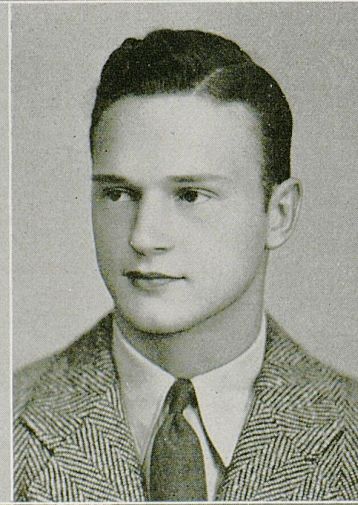
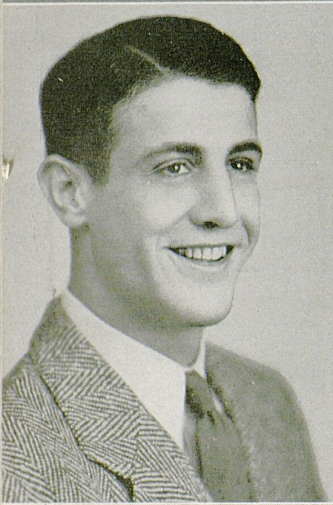


**GEORGE SCHLEGEL**  
Tackle

**WM. PORTWOOD**  
End

**LEONARD PRESTON**  
Guard

**NORMAN BECK**  
Guard



**PHILLIP CUTCHIN**  
Halfback

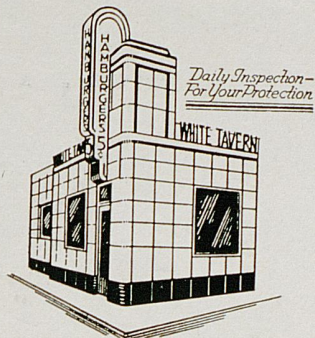
**JOHN HURST**  
Quarterback

**JACK CASNER**  
Guard

**CARL ALTHAUS**  
End

518 W. Main — 135 N. Lime — 300 E. Main

## White Tavern Shops



TASTY HAMBURGERS

5c

Take A Bag Full

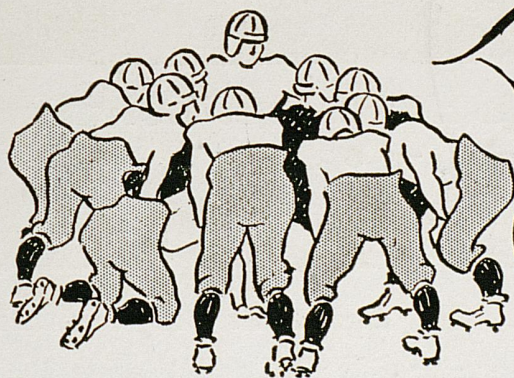


Something **NEW**\*  
has been added!

**W**IN A LETTER for your sweater, and see what something new can do! And remember: Something new has been added to a cigarette, too—to make it even more pleasant!

**\*Latakia**

(Pronounced "La-ta-kee-'a"), a flavorful tobacco from the Eastern Mediterranean. Carefully blended with other famous tobaccos, Latakia creates an entirely new—even finer Old Gold flavor.



The winning play after the game is to head straight for Walgreen's for a really delicious treat. Whether your appetite signals for a refreshing soda or a complete dinner, you'll find exactly what you want, skillfully prepared and properly served. At any hour of the day or evening, you'll find Walgreen's the ideal place to eat.

LET'S ALL MEET AT  
**WALGREEN'S**  
AFTER THE GAME!

*Tempting Suggestions*

**DOUBLE DIP CHOCOLATE SUNDAE**  
*Rich, smooth, doubly-delicious!*

**DELICIOUS DINNERS**  
*A varied menu of favorite dishes!*

**TASTY SANDWICHES**  
*Every bite a real delight!*

**DELIGHTFUL LUNCHEONS**  
*A fine selection: nourishing, tasty!*

**YOU'RE ALWAYS WELCOME AT WALGREEN'S**

**140 WEST MAIN STREET**



THEY HAVE  
THE GRANDEST  
**TASTE—**  
WHAT'S MORE,  
CAMELS ARE  
**MILDER**

THE SMOKE OF SLOWER-BURNING CAMELS CONTAINS  
**28% Less Nicotine**

than the average of the 4 other largest-selling cigarettes tested—less than any of them—according to independent scientific tests *of the smoke itself*

BY BURNING 25% SLOWER than the average of the 4 other largest-selling brands tested—slower than any of them—Camels also give you a smoking *plus* equal, on the average, to

**5**  
**EXTRA SMOKES**  
**PER PACK!**

R. J. Reynolds Tobacco Company, Winston-Salem, N. C.



**Camel**—THE CIGARETTE  
OF COSTLIER TOBACCOS