

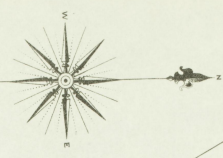
MULBERRY ST.

WASHINGTON ST.

WALNUT

J.T. BURTON MILLING CO.
No. 1 MILLING TO 2000 BUSHES
ELECT. & LIGHTS, NO. HEAT FUEL, COAL.
FACTORY
17" & 20" ROLLERS, SHARP DRUM ROLLS,
200 REVS. 2 CONVEYERS, SUGAR CRK.
SMUTTERS, 500 REVS. 1 & 2 L. SEPARATORS
500 REVS.
27" & 30" SMITH PUMPS, 300 REVS.
1 CONDENSER, 1 SUPERHEATER
DUSTERS
34" & 36" SCALING REELS, 2 ROLLING
REELS, 2 LAMP REELS, 2 PLYING
DUST COLLECTORS.

FOURTH
LAKE



LAKE

4

9

P a r k

LAKE

5

FULTON ELECTRIC
LIGHT & POWER CO.

MSCOMB

ARCH

VINE

FULTON WATER WKS.

STANDARD OIL CO.

NORMAN

7

Scale of Feet.
0 50 100 150 200

OCT. 1903
FULTON
KY. & TENN.

4

3

2

13

17

16

9

8

CARR
(Amalgamated)

9

8

SECOND

THIRD
(NOT PAVED)

SECOND

COMMERCIAL

AV.

FOURTH

LAKE

LAKE

DEPOT HOTEL

W. B. REID
SOAP POP BOTTLING

W. HALL'S LUMBER CO.

W. HALL'S LUMBER CO.

W. HALL'S LUMBER CO.

W. HALL'S LUMBER CO.

W. HALL'S LUMBER CO.

W. HALL'S LUMBER CO.

W. HALL'S LUMBER CO.

W. HALL'S LUMBER CO.

W. HALL'S LUMBER CO.

W. HALL'S LUMBER CO.

W. HALL'S LUMBER CO.

W. HALL'S LUMBER CO.

W. HALL'S LUMBER CO.

W. HALL'S LUMBER CO.

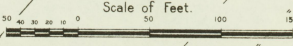
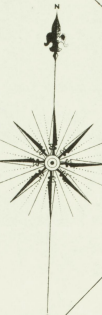
W. HALL'S LUMBER CO.

W. HALL'S LUMBER CO.

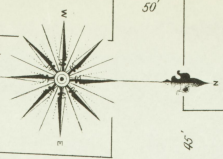
W. HALL'S LUMBER CO.

W. HALL'S LUMBER CO.

W. HALL'S LUMBER CO.



Oct. 1903
FULTON
KY. & TENN.



2

MULBERRY (Not Paved)

11

WASHINGTON (Macadamized)

7

M.E. CHURCH
1238

PLAIN

6

MAIN

8

WALNUT

3

65

MEDOWELL (Not Paved)

64

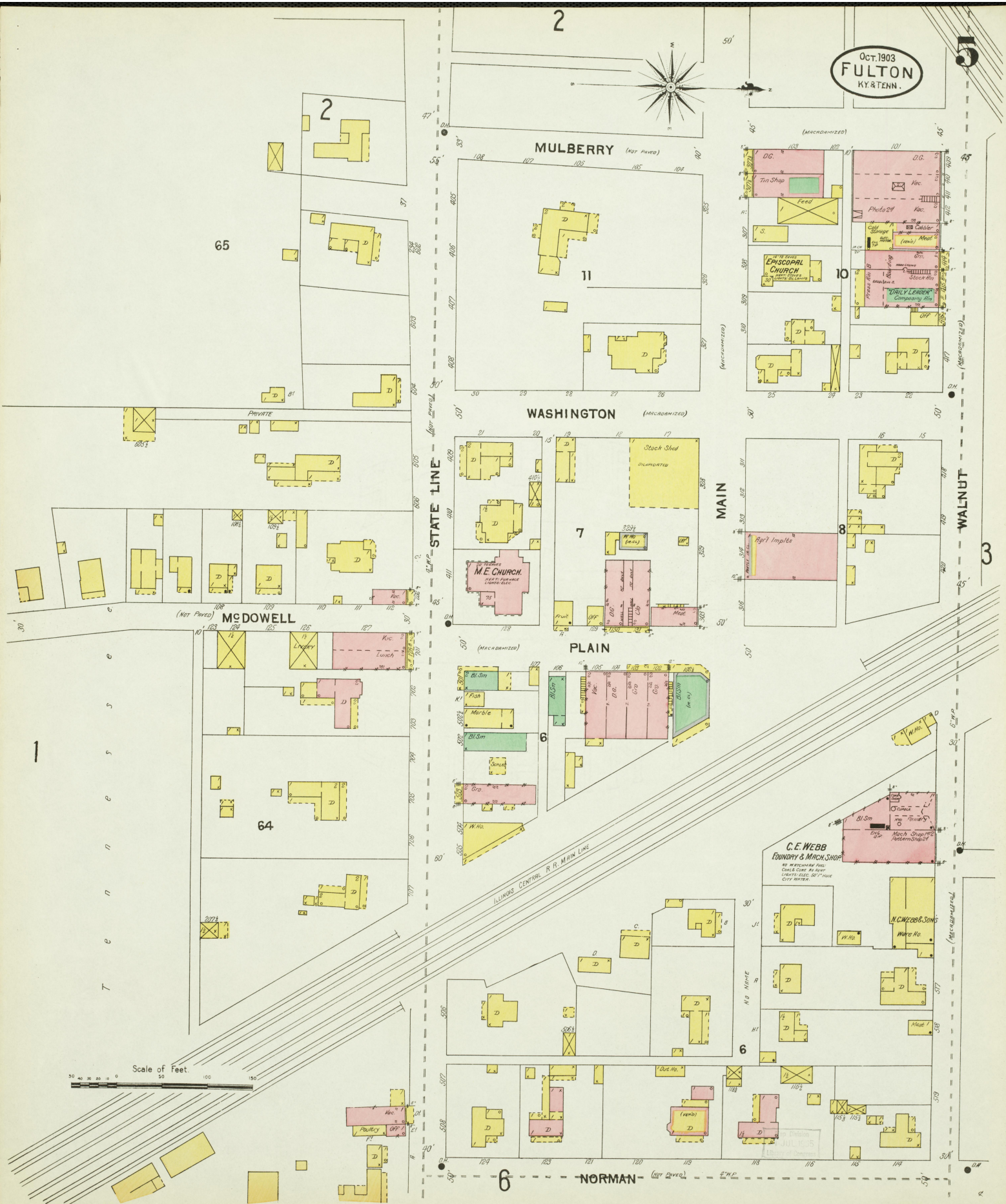
6

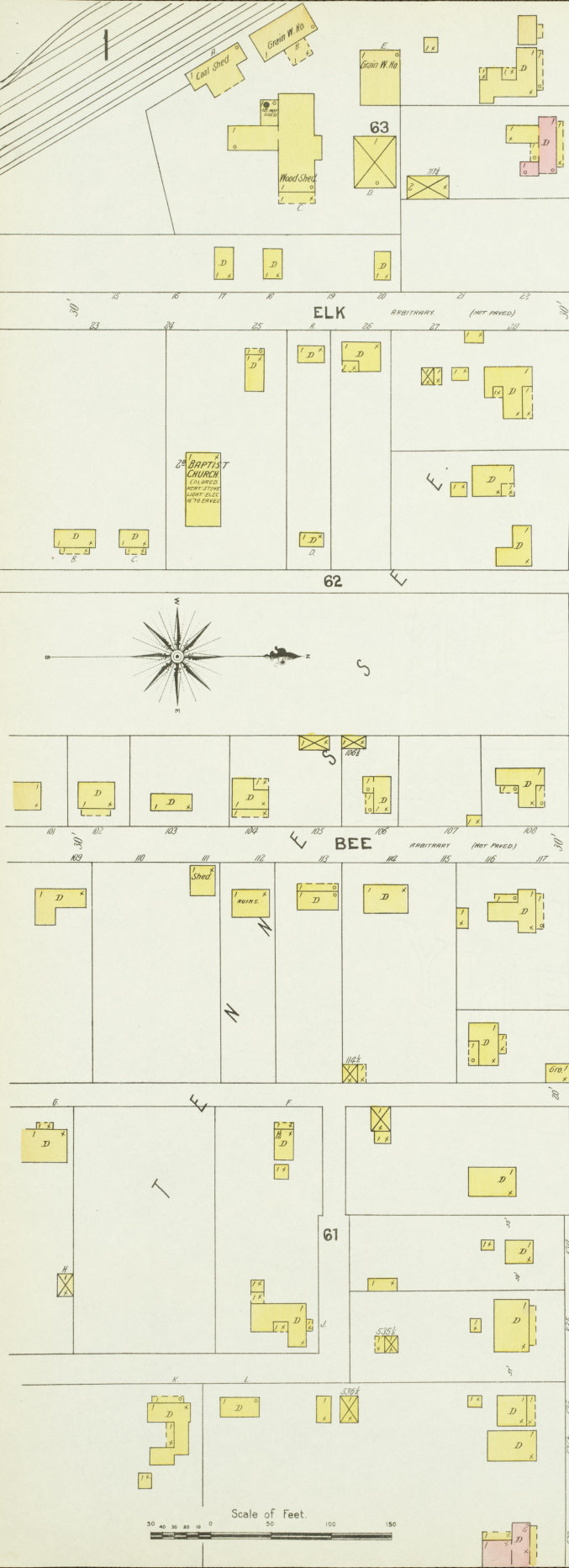
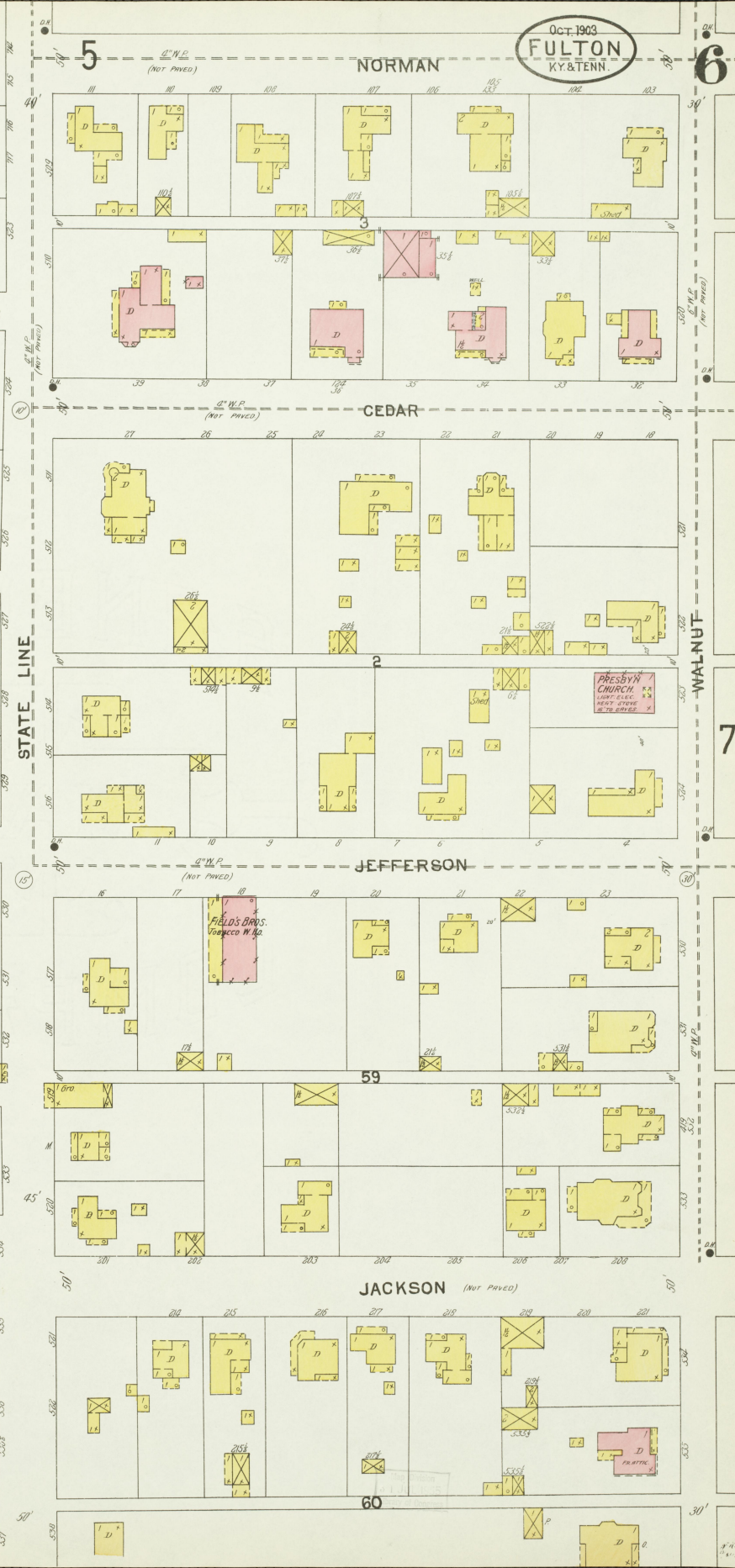
NORMAN (Not Paved)

C.E. WEBB
FOUNDRY & MACH. SHOP

N.C. WEBB & SONS
Ware Ho.

Scale of Feet.
0 50 100 150





OCT. 1903
FULTON
KY & TENN.

7

NORMAN

CEDAR

JEFFERSON

MAPLE

AV.

JACKSON

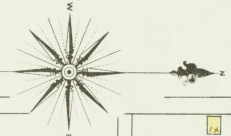
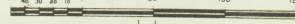
JACKSON

MAIDEN

13

13

Scale of Feet.



J.F. CLEMMONS
ICE FAC.
(IMMEDIATELY ADJACENT)
WREST MATTHEWS
LUMBER YARD
PUMP, ELEC.
ICE REFR.
ICE MACH.
ICE FAC.

G. H. BRANFORD'S
BRICK YARD
Racks
Kiln
Kiln
Racks
Brick Mach.
Pond

4
51

54

58
55

57
56

1A

2A

WALNUT

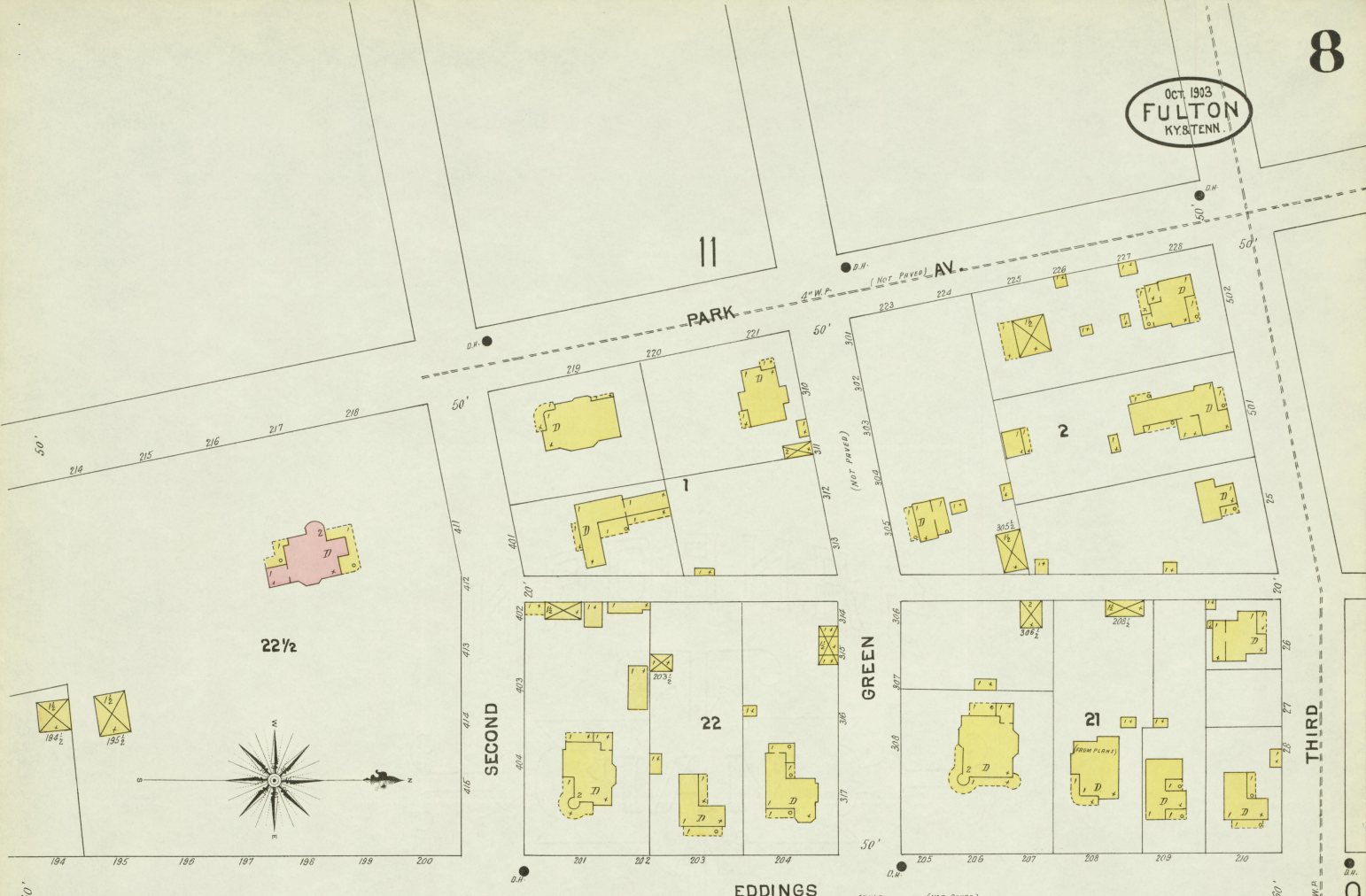
ARCH

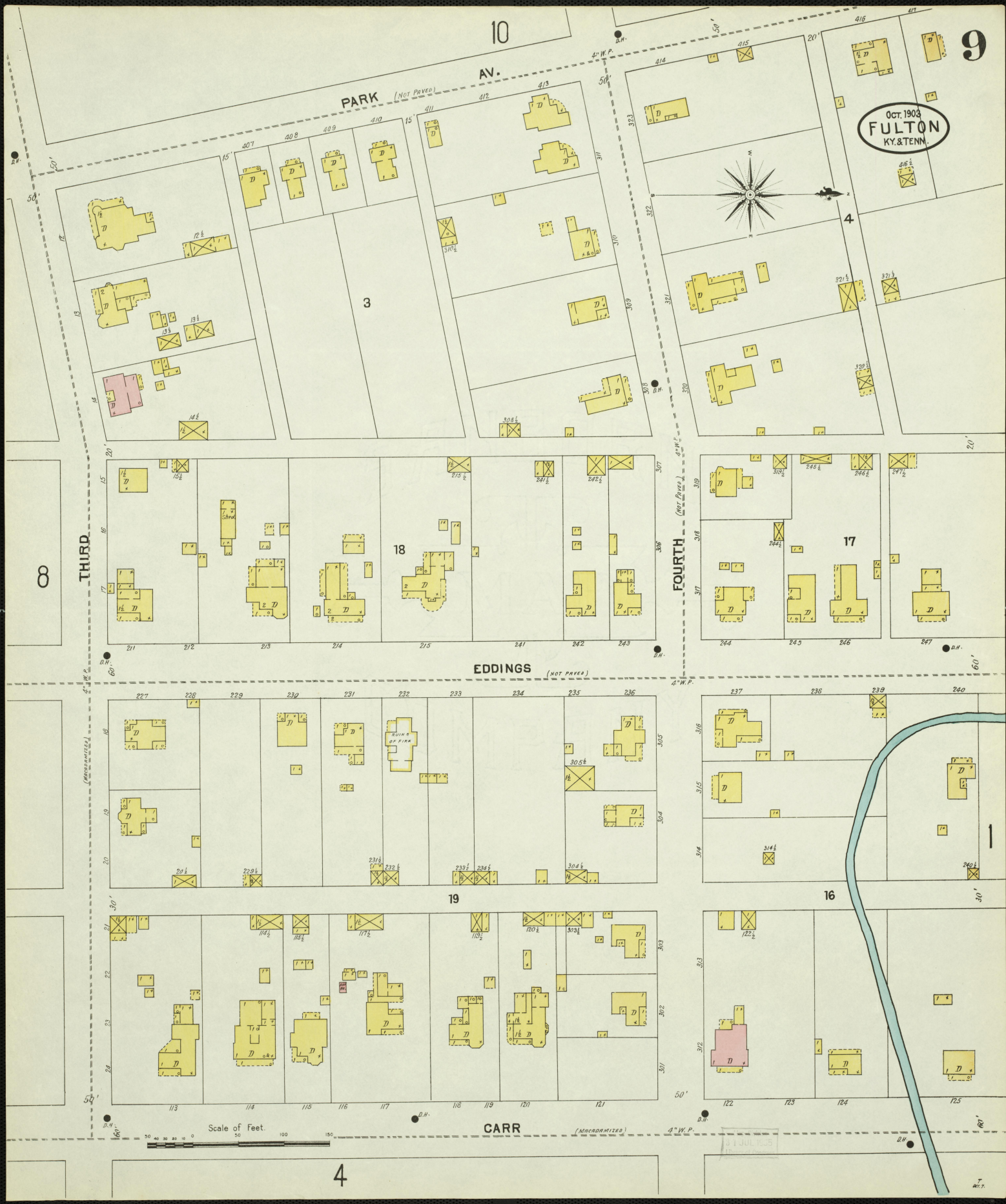
VINE

6

13

OCT. 1933
FULTON
KY. & TENN.





9

OCT. 1903
FULTON
KY. & TENN.

10

PARK (NOT PAVED)
AV.

3

EDDINGS (NOT PAVED)

18

FOURTH

17

8

THIRD

19

16

CARR (MACRODORIZED)

4

Scale of Feet
0 50 100 150

1 JUL 1905

OCT. 1903
FULTON
KY. & TENN.

FIFTH (Not Paved)

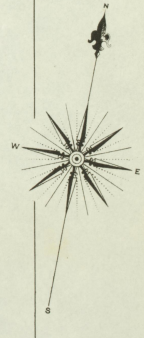
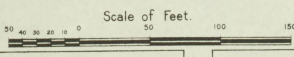
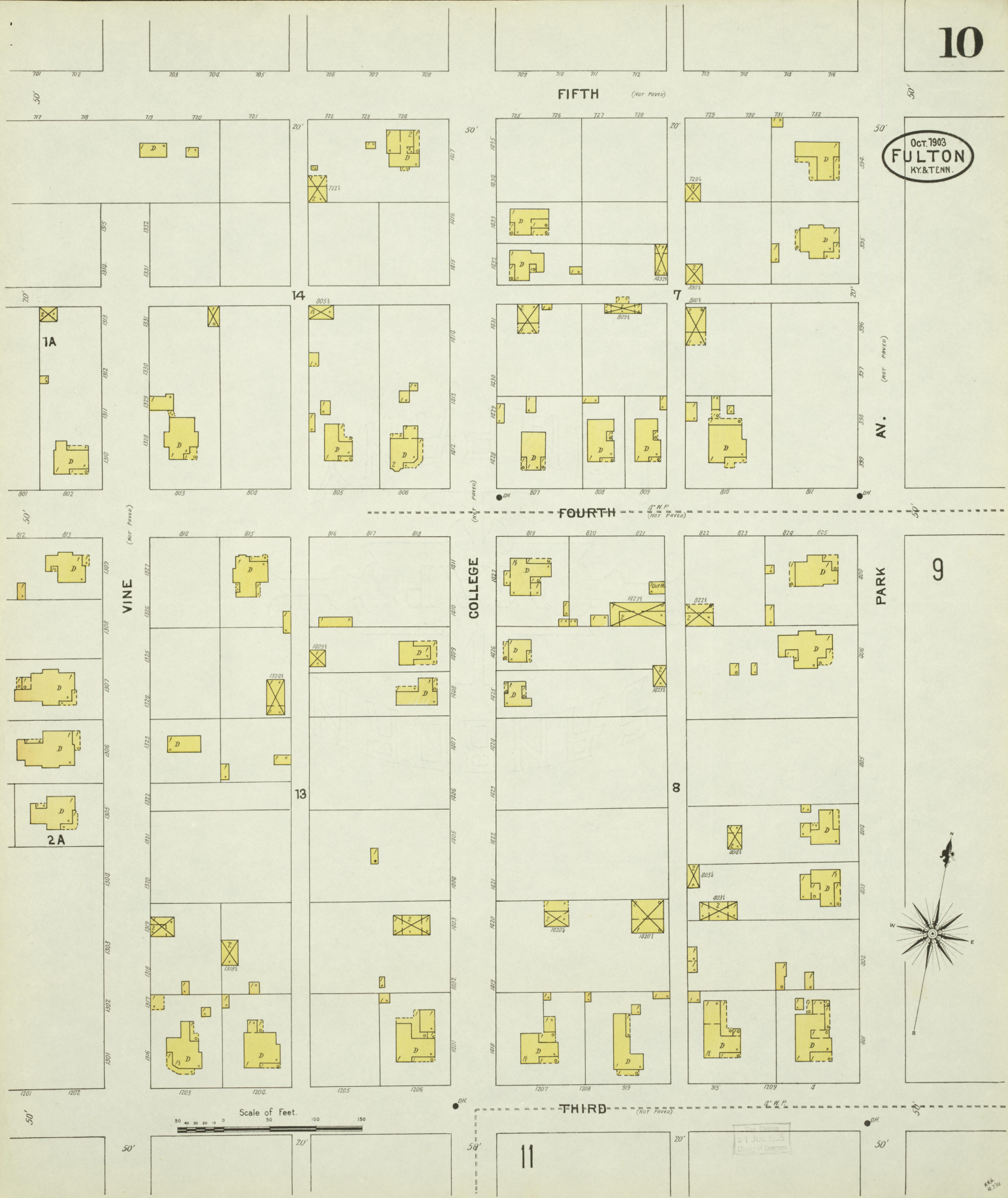
FOURTH (Not Paved)

THIRD (Not Paved)

VINE

COLLEGE

PARK

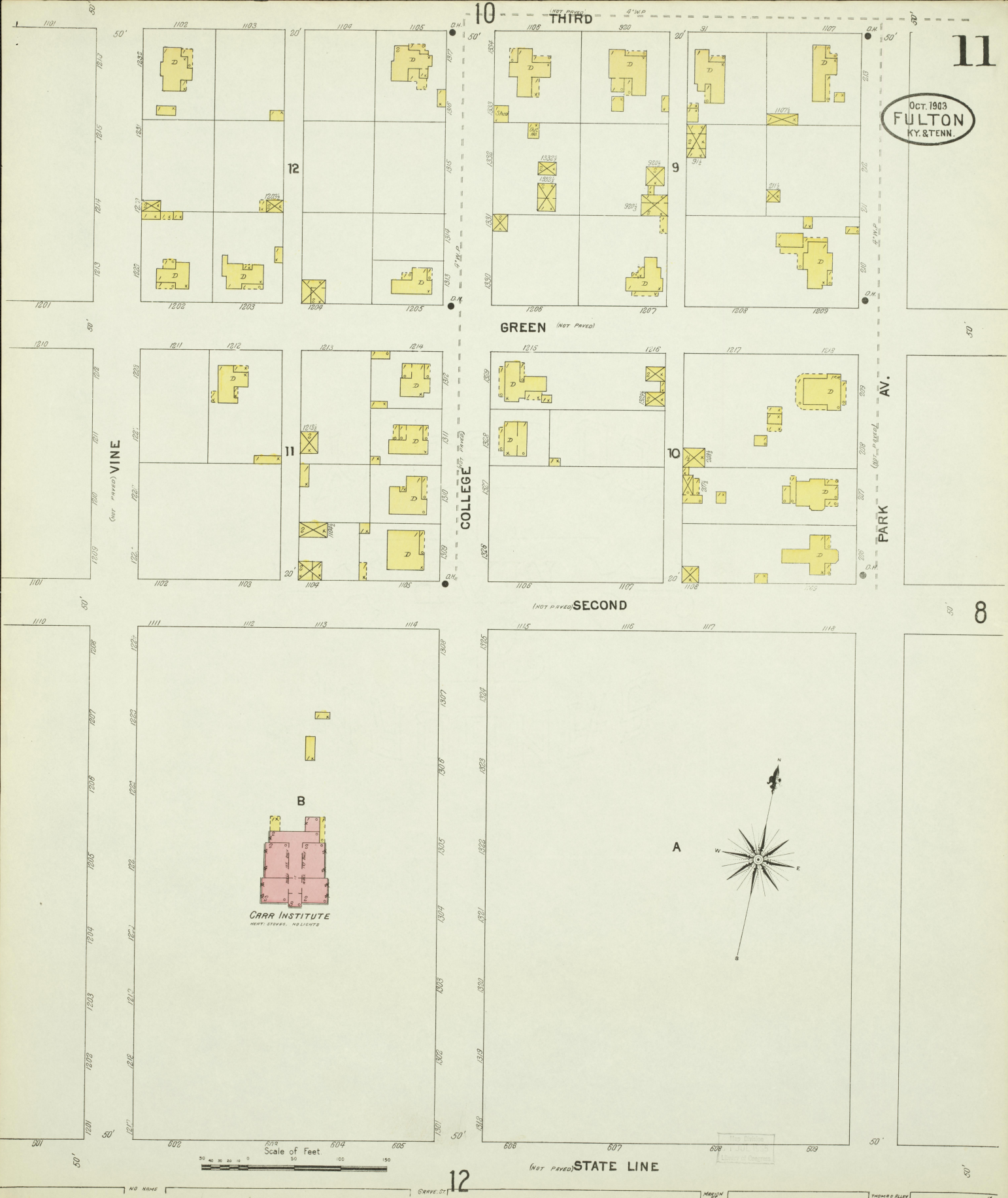


RECORDED
31 JUL 1905
15-16-17-18-19-20-21-22-23-24-25-26-27-28-29-30-31

OCT. 1903
FULTON
KY. & TENN.

11

8



VINE

COLLEGE

GREEN

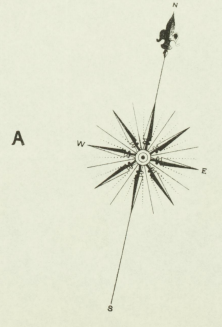
SECOND

THIRD

STATE LINE

CARR INSTITUTE
HEAT STOKES, ARCHT.

Scale of Feet

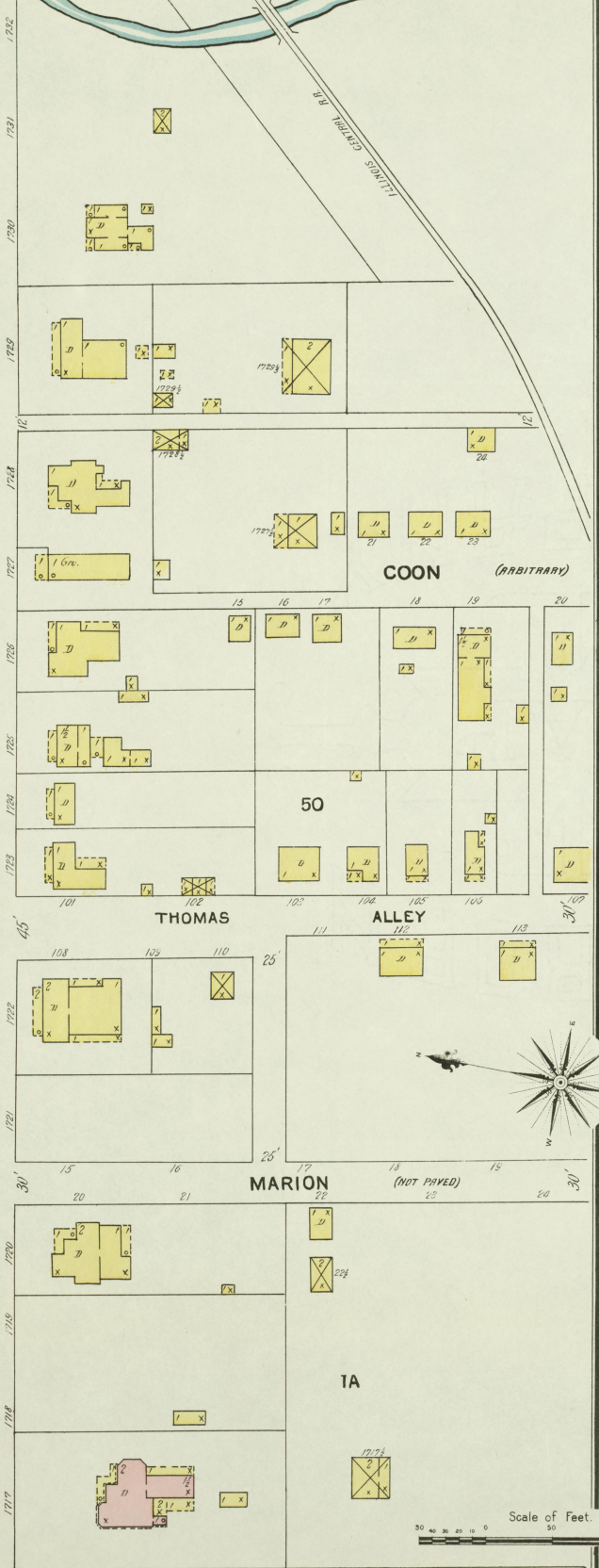


12

THOMAS ALLEY

50'

2



11

CALLES ST

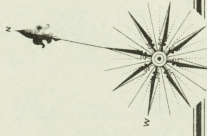
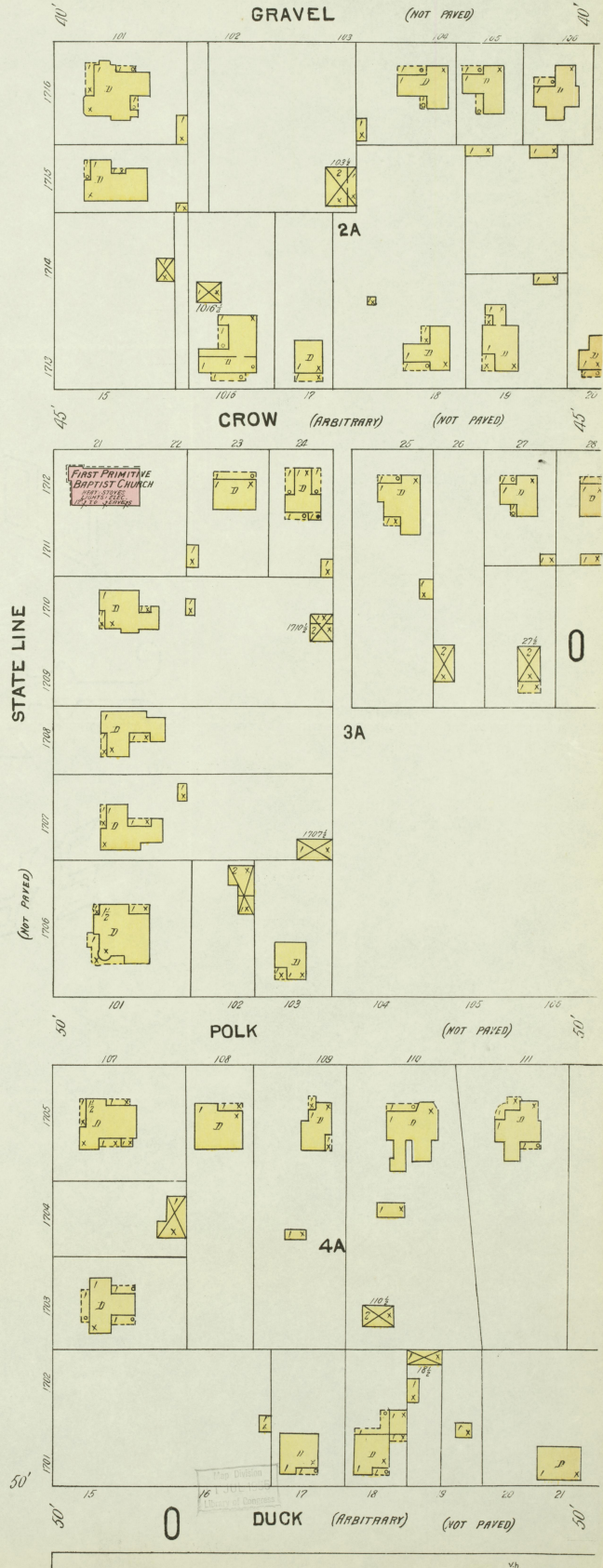
VINE ST

STATE LINE

Oct. 1903
FULTON
KY. & TENN.

12

12

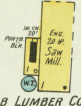


Scale of Feet.
0 50 100 150

ILL. CENTRAL R.R.

5A

N. C. WEBB LUMBER CO.
NO WATCHMAN, NO FIRE APPS.
NO LIGHTS, NO HEAT, FUEL, WOOD.



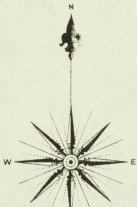
1/2 Mile N.W. of Passöör. Depot.

HILL & BRANSFORD,
BRICK YARD

NO WATCHMAN, NO FIRE APPS.
NO LIGHTS, NO HEAT, FUEL, COAL
AND WOOD.



NO EXPOSURE ANY SIDE.



AV. (NOT PAVED.)

N. MAPLE

3A

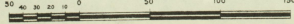
4A

MAIDEN (NOT PAVED.)

7

2A

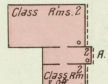
Scale of Feet.



1A

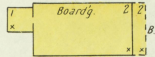
4

Top Edition
JUL 1905
Chicago, Ill. Openings

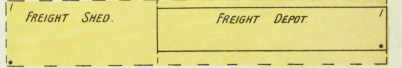


SOUTH FULTON INSTITUTE.
STARTED IN TENNESSEE.
1 MILE S. W. of I. C. PASS. DEPOT.

NO EXPOSURES ANY SIDE.



FRONT 30' x 10' 2 1/2' x 0' 09"



ILL. CENTRAL R.R. MEMPHIS DIV.

ILLINOIS CENTRAL PASSÖÖR. DEPOT.

