

N O E X P O S U R E

1

16

ME CHURCH
(COLORED)
11' x 12' x 10'

R. R. RIGHT OF WAY
L & N R. R.

TOBACCO WARE HO.
SIDELIGHTS RAISED 5'
WOOD FLOOR WOOD POSTS

20
(10)

CHESTNUT & ORR
TOBACCO WARE HO.
& PRIZERY
HEAT STOVES NO LIGHTS

PINCHEM RD (CLARKSVILLE RD)

JACKSON



25

ACADEMY

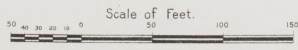
26

MAIN

31

KEY

- 1. WALLS AND ROOF
- 2. FLOOR
- 3. CEILING
- 4. WINDOW
- 5. DOOR
- 6. PORCH
- 7. DRIVE
- 8. WALK
- 9. FENCE
- 10. UTILITY
- 11. STANDARD
- 12. SIGN
- 13. CHIMNEY
- 14. TOWER
- 15. TOWER
- 16. TOWER
- 17. TOWER
- 18. TOWER
- 19. TOWER
- 20. TOWER
- 21. TOWER
- 22. TOWER
- 23. TOWER
- 24. TOWER
- 25. TOWER
- 26. TOWER
- 27. TOWER
- 28. TOWER
- 29. TOWER
- 30. TOWER
- 31. TOWER
- 32. TOWER
- 33. TOWER
- 34. TOWER
- 35. TOWER
- 36. TOWER
- 37. TOWER
- 38. TOWER
- 39. TOWER
- 40. TOWER
- 41. TOWER
- 42. TOWER
- 43. TOWER
- 44. TOWER
- 45. TOWER
- 46. TOWER
- 47. TOWER
- 48. TOWER
- 49. TOWER
- 50. TOWER
- 51. TOWER
- 52. TOWER
- 53. TOWER
- 54. TOWER
- 55. TOWER
- 56. TOWER
- 57. TOWER
- 58. TOWER
- 59. TOWER
- 60. TOWER
- 61. TOWER
- 62. TOWER
- 63. TOWER
- 64. TOWER
- 65. TOWER
- 66. TOWER
- 67. TOWER
- 68. TOWER
- 69. TOWER
- 70. TOWER
- 71. TOWER
- 72. TOWER
- 73. TOWER
- 74. TOWER
- 75. TOWER
- 76. TOWER
- 77. TOWER
- 78. TOWER
- 79. TOWER
- 80. TOWER
- 81. TOWER
- 82. TOWER
- 83. TOWER
- 84. TOWER
- 85. TOWER
- 86. TOWER
- 87. TOWER
- 88. TOWER
- 89. TOWER
- 90. TOWER
- 91. TOWER
- 92. TOWER
- 93. TOWER
- 94. TOWER
- 95. TOWER
- 96. TOWER
- 97. TOWER
- 98. TOWER
- 99. TOWER
- 100. TOWER



Copyright 1923 by the Sanborn Map Co.

WATER FACILITIES +
Private wells

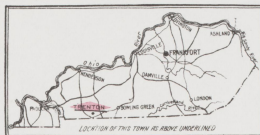
FIRE DEPT.

To have one Ford chemical and ladder auto truck
with 3-45 gal. chemical tanks and 20 ft. chemical
hose. No 2 1/2 gal. fire company. No fire trucks.
Public light: electric. Grades level. Principal
streets macadamized.

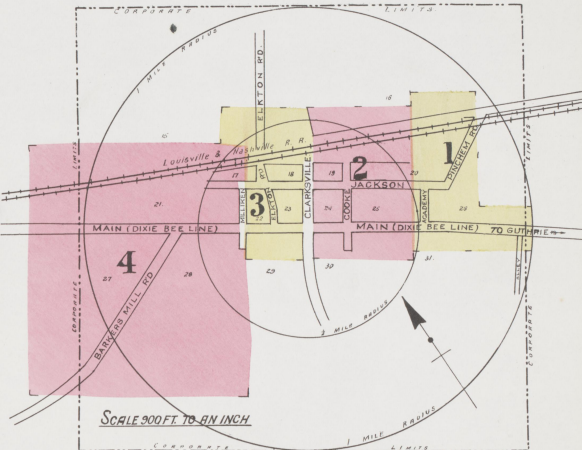
JUL - 9 1923

(2 SHEETS)

1

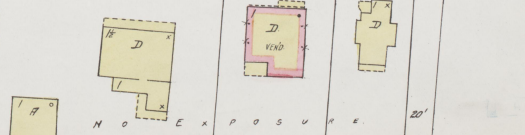


42447



INDEX

SPECIALS	SHEET	POST OFFICE	SHEET
Baptist Church, (Colored),	2	Post Office, (Colored),	3
Parsonage, (Colored),	1	Public School, (Colored),	2
Chestnut & Orr, Tobacco Warehouse & Prizery,	1	Russell Tobacco Factory,	2
Christian Church,	4	Standard Oil Co.,	2
Cumberland Presbyterian Church,	4	Trenton Graded School,	2
L. & N. R. R. Depot,	2	Hotel,	3
Methodist Episcopal Church, (Colored),	1	Milling Co.,	3

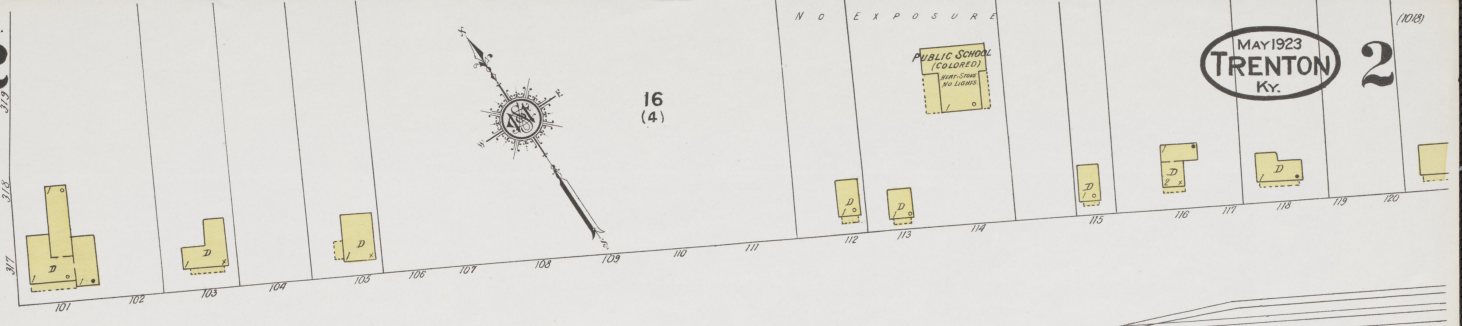


16
(4)

N O E X P O S U R E



PUBLIC SCHOOL
(COLONIAL)
WATER-LOOSE
NO LEAKS



L. & N. DEP'T.
FREIGHTS

R. R. RIGHT OF WAY

CORR. SHED
K.

STOCK
PENS
K.

STANDARD OIL CO.
GASOL. &
KEROSENE
TANKS

19
(9)

20
(10)

JACKSON

CLARKSVILLE

COOKE

24
(8)

25
(8)

TRENTON GRADED SCHOOL
WATER-LOOSE
LEAKS

MAIN

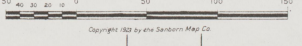
30

(7)

31

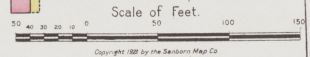
BAPTIST CHURCH
WATER-LOOSE
LEAKS

Scale of Feet.



N O E X P O S U R E

MAY 1923
TRENTON
KY.



Copyright 1923 by the Sanborn Map Co.

N O E X P O S U R E

Pond

SCALE 100 FT. TO AN INCH

JACKSON

MILLIKEN

MAIN

21

3

2

CUMBERLAND
PRESBYTERIAN CHURCH

CHRISTIAN
CHURCH

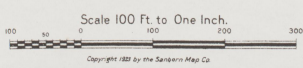
27

28

BARNERS
MILL
P.D.

C E M E T E R Y

BAPTIST CHURCH



Scale 100 Ft. to One Inch.

Copyright 1923 by the Sanborn Map Co.