

# MADISONVILLE

HOPKINS COUNTY  
**KENTUCKY**

Sanborn M & P Company  
of New York

**SEPT 1923**

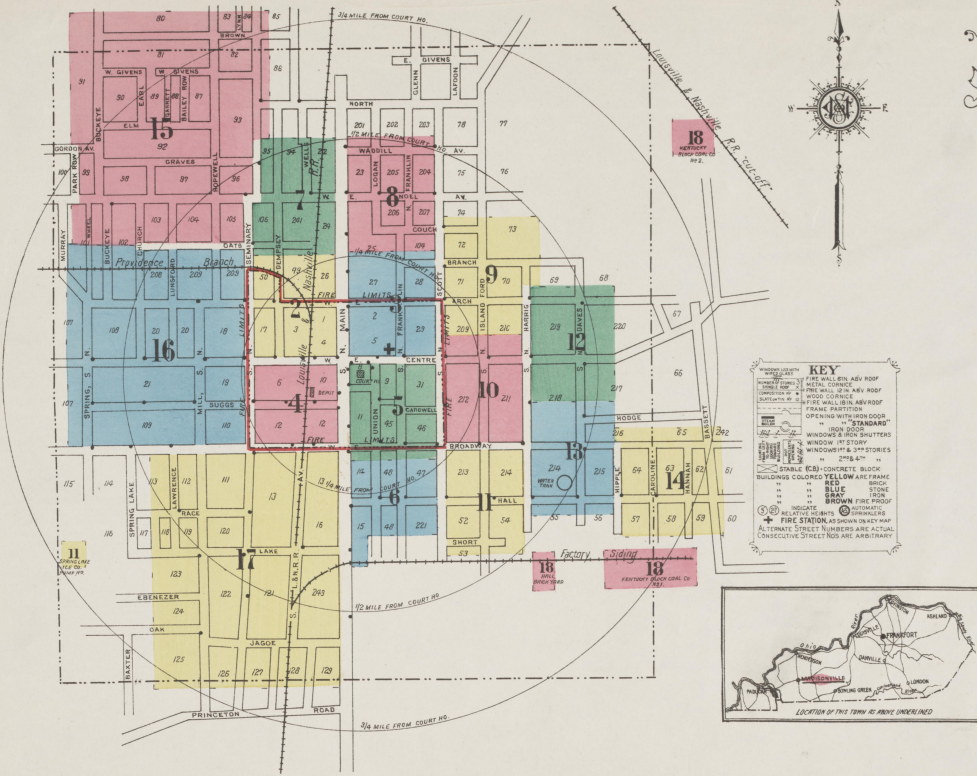
Copyright 1923 by the Sanborn Map Co.

Great care is exercised in the production of our publications and in our service, but absolute accuracy is not guaranteed.

Population 6500  
Prevailing Winds, South West.

**WATER FACILITIES.** Gravity and direct pressure system of water works owned by the city. Water supply from two large lakes. One Fairbanks-Morse centrifugal electric pump, capacity 300 galls. one DeLaval centrifugal electric pump, capacity 300 galls, and two Fibergor centrifugal electric pumps, capacity 625 galls each per hour. Water tank, capacity 100,000 galls, elevated 100 ft. gives gravity pressure of 50 lbs. at cor. of Main and Centre sts. Fire pressure 100 lbs. 1/2 miles of water pipes, 2" to 10" diam. 88 double hydrants. Average daily consumption 175,000 galls.

**FIRE DEPARTMENT.** Volunteer company of 15 men, Chief and assistant chief partly paid. One fire station, 21 E Centre st (Brick constn, ordinary). One Rome combination hose and chemical auto truck with two 35 gall chemical tanks, 200 ft chemical hose and 1200 ft 2 1/2" hose also 3 ladders 12' to 30'. Fire alarm by electric siren at fire station. Fire limits as shown.



**KEY**

- UNPAVED
- PAVED
- ASPHALT
- CONCRETE
- BRICK
- WOOD
- IRON
- STEEL
- CEMENT
- PLASTER
- PAINT
- GLASS
- TILE
- MARBLE
- GRANITE
- SLATE
- SHALE
- SANDSTONE
- LIMESTONE
- GYPSUM
- CEMENT
- PLASTER
- PAINT
- GLASS
- TILE
- MARBLE
- GRANITE
- SLATE
- SHALE
- SANDSTONE
- LIMESTONE
- GYPSUM

## INDEX

STREETS	RANGE	RANGE	RANGE	RANGE
A Street, see Couch.				
Antigo Place (arbitrary),				
Arch, E.,	100-339 3			
" "	400-539 9			
" "	600-743 12			
" W.,	100-325 2			
" "	400-835 16			
<b>B</b>				
Bailey Row,	700-825 15			
Bassett,				
Branch,	100-129 3			
" "	200-335 9			
" "	100-339 5			
Broadway, E.,	400-638 *11			
" "	401-539 *10			
" "	600-731 13			
" "	800-1101 14			
" W.,	100-612 *17			
" "	101-243 *4			
" "	401-831 *16			
Brown,	330-739 15			
Buckeye,	200-327 16			
" "	328-925 15			
<b>C</b>				
Cardwell,				
Caroline,	300-441 14			
Centre, E.,	100-336 *5			
" "	101-329 *3			
" "	400-539 10			
" "	400-529 15			
" W.,	600-731 12			
" "	100-324 *4			
" "	101-325 *2			
" "	400-831 16			
Church,	100-325 16			
" "	400-529 15			
Couch,	100-225 8			
" "	300-439 9			
Court,	100-129 5			
<b>D</b>				
Daves, N.,	100-203 12			
" S.,	100-143 12			
" "	140-413 13			
Dempsey,	2 & 7			
Depot,				
Dozier Ave.,	600-631 17			
<b>E</b>				
Earl,	15			
<b>F</b>				
Ebenezer,	500-543 17			
Elm,	500-735 15			
<b>G</b>				
Garrett,				
Givens, W.,				
Gordan Ave.,				
Graves,	400-645 15			
<b>H</b>				
Hall,	100-339 6			
" "	400-539 11			
" "	600-735 13			
" "	800-1019 14			
Hannah,				
Harris, N.,	100-200 *12			
" "	101-115 *10			
" "	117-217 *9			
" "	215-225 9			
" S.,	100-140 *12			
" "	101-239 *10			
" "	200-410 *13			
" "	301-429 *11			
Hipple,	300-440 *14			
" "	301-413 *13			
Hodge,	700-743 13			
Hopewell,	200-325 16			
" "	400-921 15			
<b>I</b>				
Island Ford, N.,	100-133 10			
" "	134-401 9			
" S.,	100-239 10			
" "	300-515 11			
<b>J</b>				
Jagoe,	17			
<b>K</b>				
Kane,				
<b>L</b>				
Lake,	100-615 17			
Lawrence,	300-429 17			
Logan,	8			
L & N. R. R. Ave., S.,				
Lunsford,	100-329 16			
" "	400-445 15			
Lynn,	900-929 15			
<b>M</b>				
McLeod Ave.,				
Main, N.,	425 *17			
" "	100-320 *3			
" "	101-315 *2			
" "	317-545 *7			
" "	322-614 *8			
" S.,	100-317 5			
" "	301-633 *17			
" "	326-500 *6			
Mill, N.,	100-149 16			
" S.,	100-259 16			
Minden Place (arbitrary),	300-747 17			
Murphy,	9			
Murray,	300-330 *16			
<b>N</b>				
Noel Ave., E.,	100-329 8			
" W.,	100-329 7			
" "	400-837 15			
" N. S., near J. H. Hodges Tobacco Stemery,	118			
" near Renecke Coal Min'g Co.,	118			
North,	327-336 15			
<b>O</b>				
Oak,	17			
Oats,	200-329 7			
" "	400-624 *16			
" "	401-625 *15			
<b>P</b>				
Park Row,	15			
<b>R</b>				
Race,	400-615 17			
<b>S</b>				
Scott, N.,	100-122 *10			
" "	101-305 *3			
" "	124-404 *9			
" S.,	101-305 *3			
" "	101-313 *5			
" "	300-512 *11			
Seminary, N.,	315-435 *6			
" "	100-318 *2			
" "	101-325 *16			
" "	320-614 *7			
" "	401-615 *15			
" S.,	616-925 15			
" "	100-236 *4			
<b>SPECIALS</b>				
<b>B</b>				
Bass Lumber Co., Planing Mill,	2			
Blanks, A. R., Tobacco Co., Stemming, &c.,	15			
<b>C</b>				
City Hall,	3			
Jail,	3			
Light Plant,	18			
Coil Coal Co. (formerly),	18			
County Court House,	5			
Jail,	3			
Cumberland Presbyterian Church,	16			
<b>D</b>				
Day's Chapel,	15			
<b>F</b>				
Fire Department,	3			
First Baptist Church,	5			
Christian Church,	5			
Holiness Church,	15			
M. E. Church, South (old),	5			
" (new),	10			
Presbyterian Church,	3			
<b>G</b>				
Garrick Theatre,	5			
Grand Central Hotel,	4			
<b>H</b>				
Hall, W. L., Brick Yard,	18			
Hart Coal Co., Mines Nos. 9 and 11,	6			
High School,	17			
Hodge, J. H., Tobacco Stemery,	18			
Hotel Madison,	5			
<b>I</b>				
Imperial Tobacco Stemery,	2			
<b>J</b>				
Jarvis, A. B., Tobacco Re-handling,	17			
<b>K</b>				
Kentucky Block Coal Co., Mines Nos. 1 & 2,	18			
<b>L</b>				
L & N. R. R. Depots,	4			
Wells,	7			
Wheel,	200-329 16			
" "	330-369 15			
<b>M</b>				
Madisonville Hospital,	4			
Milling Co.,	16			
Municipal Water Works, Pumping Station,	18			
<b>P</b>				
Post Office,	4			
Primitive Baptist Church,	11			
Public School, 333 E. Broadway,	5			
" " 225 W. Broadway,	4			
" " 315 Waddill Ave.,	8			
" (Colored),	9			
<b>R</b>				
Renecke Coal Mining Co.,	18			
Ruby Lumber Co., Saw and Planing Mill,	4			
<b>S</b>				
St. Mary's Episcopal Church,	2			
Spring Lake Ice Co., Ice Factory,	4			
" " Pump House,	11			
Sunset Coal Co. (formerly),	18			
<b>U</b>				
Union Tabernacle,	2			
<b>V</b>				
Victoria Coal Co. (formerly),	6			
<b>W</b>				
Wesley Chapel C. M. E. Church,	9			
<b>Z</b>				
Zion Methodist Episcopal Church,	15			

\* Indicates only one side of Street shown.



SEPT 1923.  
MADISONVILLE  
KY.

(1223)

DEMPSEY

7

BR 1 ST  
STEAMING 1ST  
HANGING 2ND & 3RD  
SHEET RM  
BULKING 5  
RECEIVING & PACKING 1ST  
HANGING 2ND & 3RD  
S.R. 147  
IMPERIAL TOBACCO STEMMERY  
HEAT STEAM. COKE-H. OFF. FUEL COOK.  
LIGHTS ELECTRIC. FIRE ALARMS 6 BBS

BASS LUMBER COMPANY  
PLANING MILL  
NO MACHINERY. POWER USED. HEAT STEAM.  
LIGHTS ELECTRIC. SAWDUST COLLECTED BY  
PUMPER SYSTEM. NO FUMES. 1894

50

49

LUMBER STORAGE

COOPERAGE SHOP (OLD)

26

W. ARCH

3

FIRST BAPTIST CHURCH  
HEAT STEAM. COKE-H. OFF. FUEL COOK.  
LIGHTS ELECTRIC

N. SEMINARY

UNION TABERNACLE  
HEAT STEAM. COKE-H. OFF. FUEL COOK.  
LIGHTS ELECTRIC

DEMPSEY

3

17

STORE NO.

STORE NO.

STORE NO.

STORE NO.

Bi. Sm.

Bi. Sm.

Bi. Sm.

Bi. Sm.

Bi. Sm.

W. CENTRE

4

HALL

HALL

GARAGE  
CEMENT FLOOR. STEEL TRUSS ROOF  
HEAT STEAM. COKE-H. OFF. FUEL COOK.  
LIGHTS ELECTRIC

4

WIRE NO.

WIRE NO.

Scale of Feet.



Copyright 1923 by the Sanborn Map Co.

S. MAIN ST

SEPT 1923.  
MADISONVILLE  
KY.



E. ARCH

N. FRANKLIN

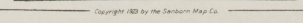
N. SCOTT

E. CENTRE

5

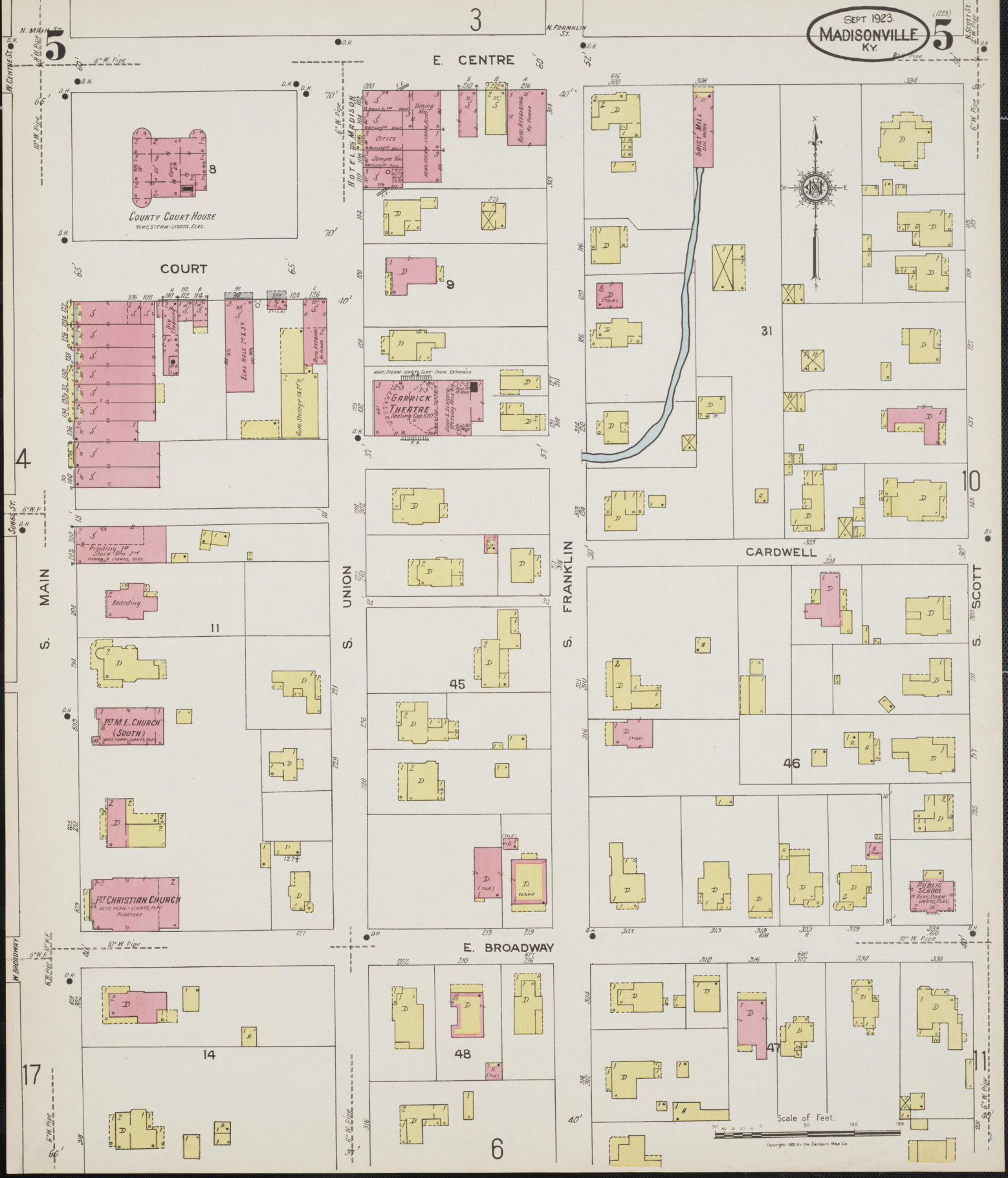
10

Scale of Feet.



Copyright 1923 by the Sanborn Map Co.





COUNTY COURT HOUSE  
HEAT, SEAM-LIGHTS, ELEC.

COURT

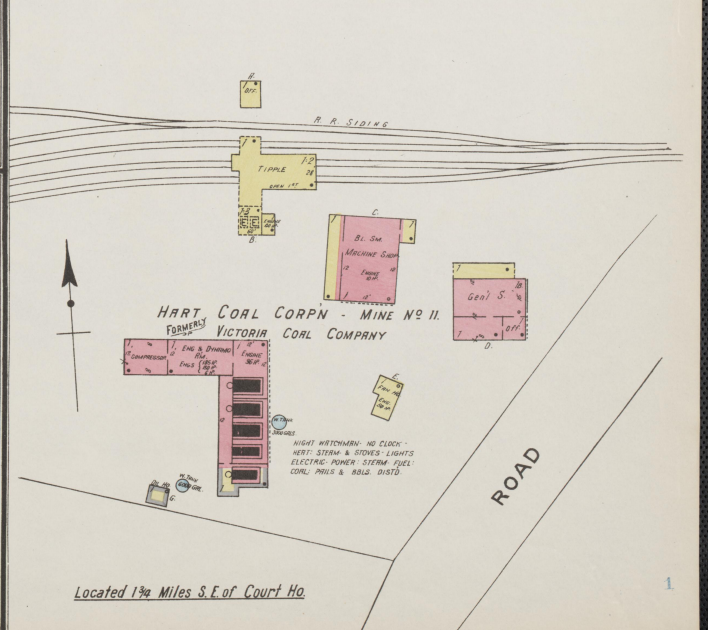
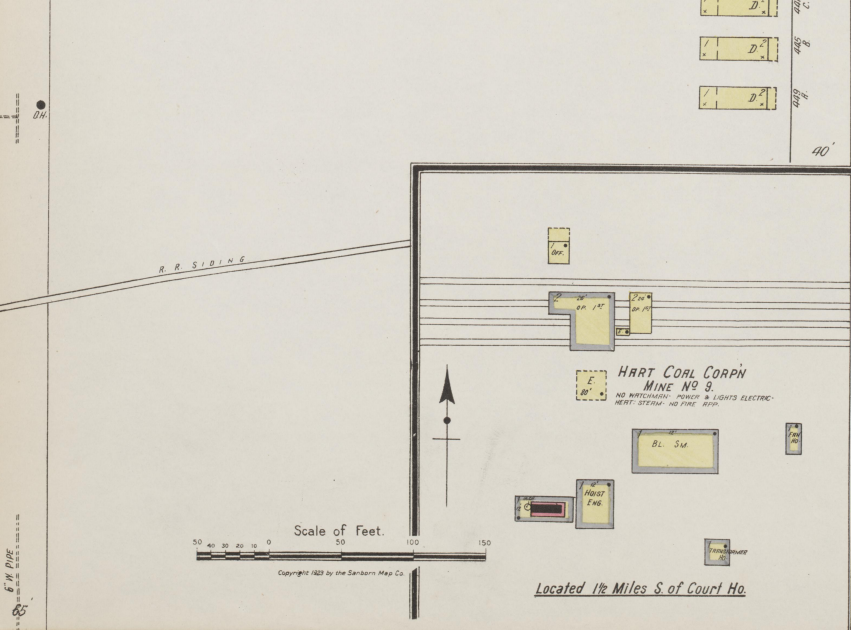
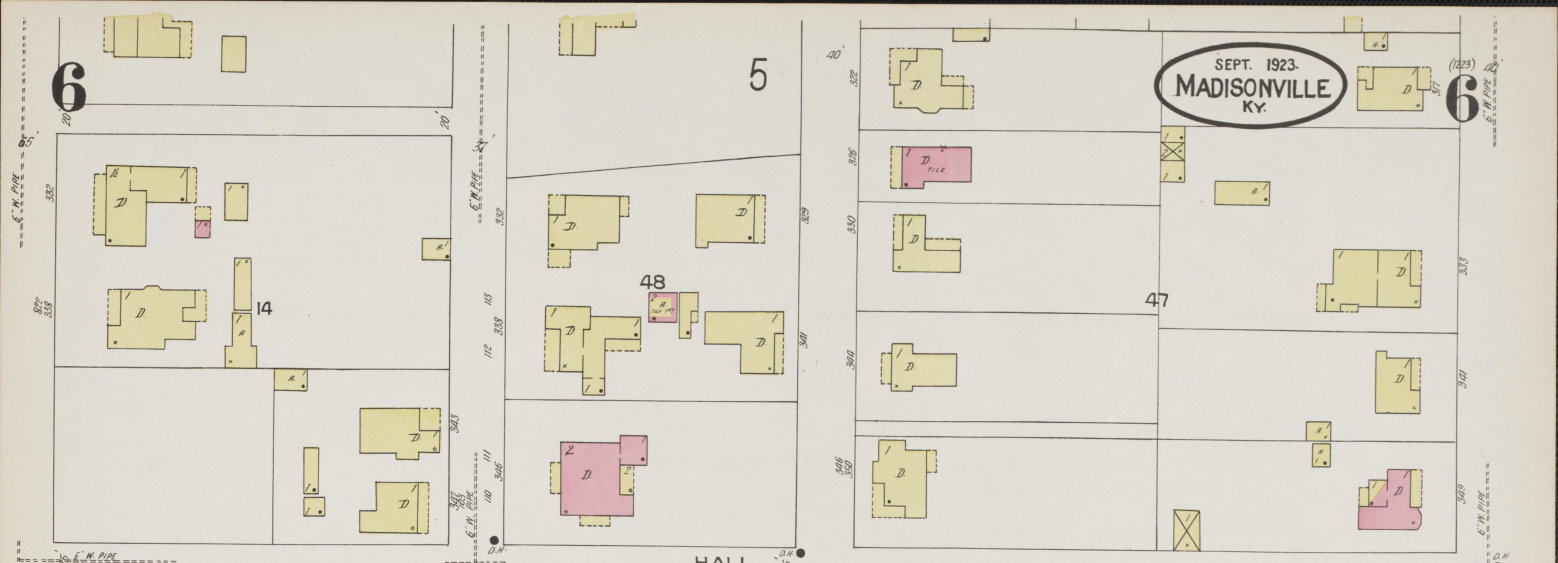
GARRICK THEATRE  
SEATING CAP. 570

1ST M.E. CHURCH  
(SOUTH)

1ST CHRISTIAN CHURCH  
HEAT, FURN. - LIGHTS, ELEC.  
PIEDMONTERS

PUBLIC SCHOOL  
HEAT, SEAM, LIGHTS, ELEC.

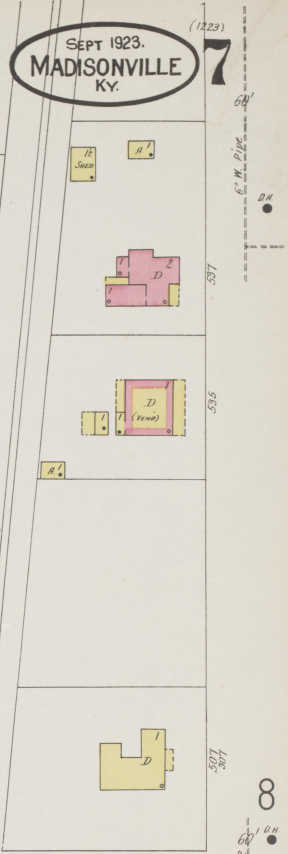
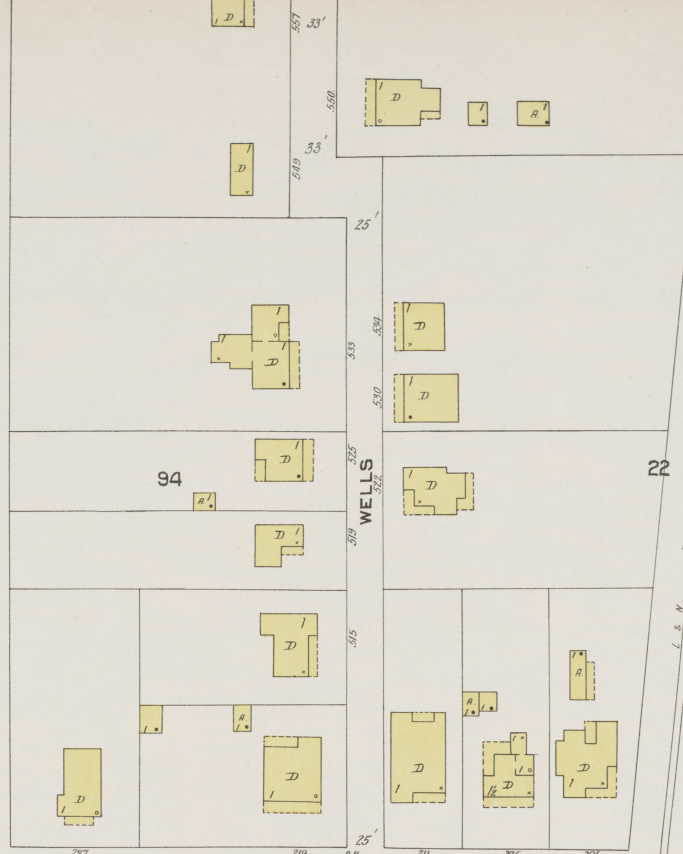
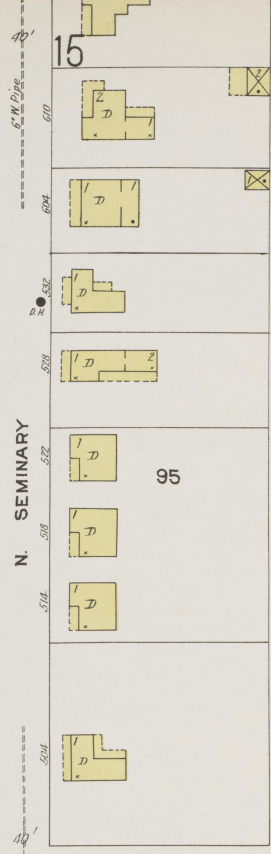
Scale of Feet.  
0 10 20 30 40 50 60 70 80 90 100  
Copyright 1923 by the Sanborn Map Co



7

SEPT 1923.  
MADISONVILLE  
KY.

7

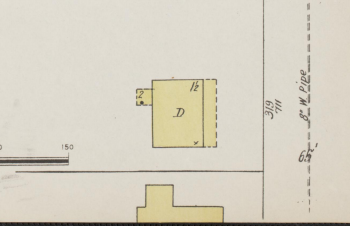
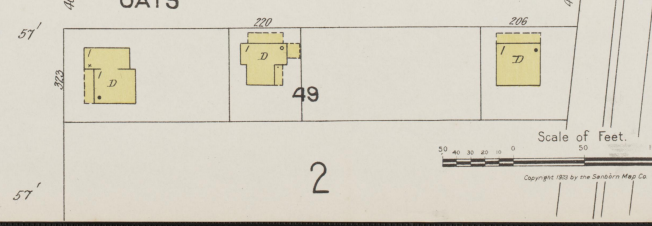
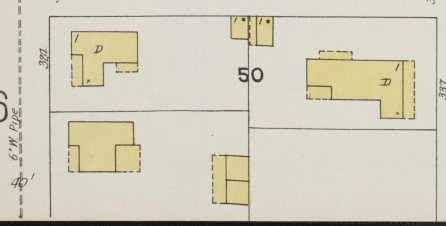
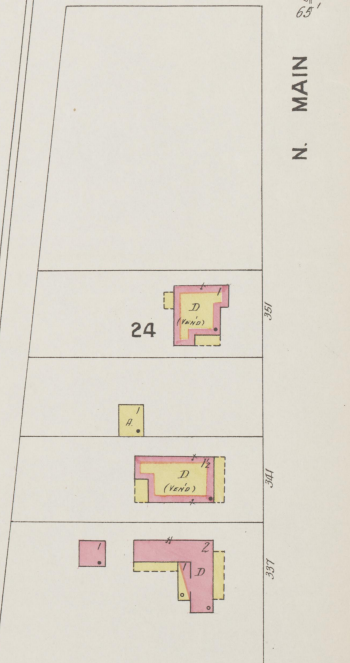
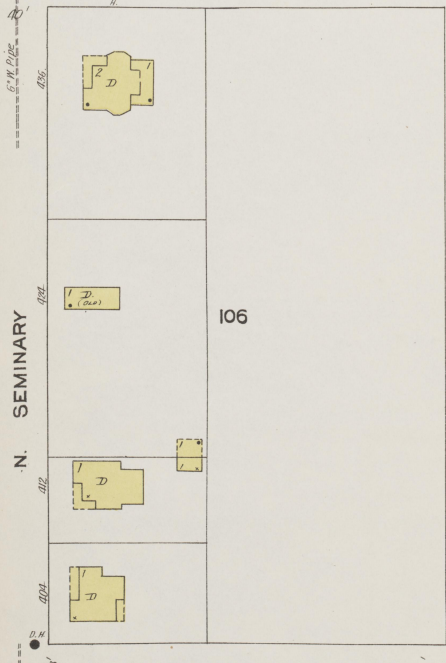


15

8

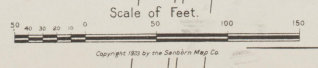
W. NOEL AV.

N. MAIN



16

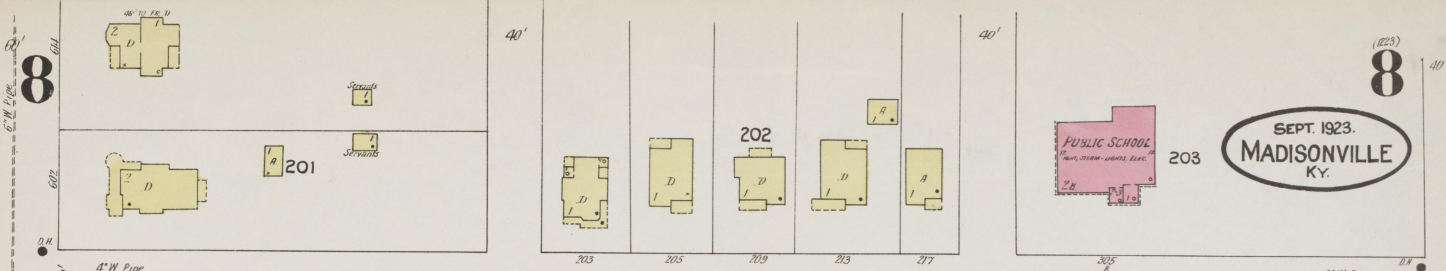
2



8

8

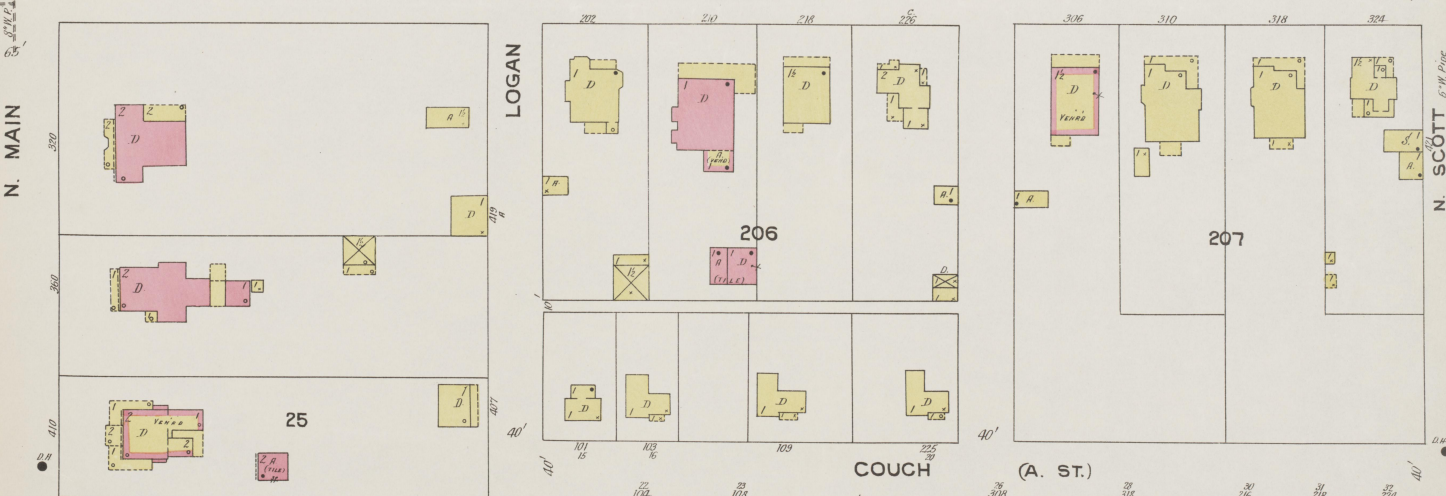
SEPT. 1923.  
MADISONVILLE  
KY.



WADDILL AV.



E. NOEL AV.

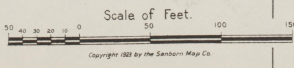


COUCH (A. ST.)



3

1





(1223)

9

SEPT 1923  
MADISONVILLE  
KY.

8

6" W. Pipe

8

N. SCOTT

3

6" W. Pipe

6" W. Pipe

10

COUCH (A. ST.)

BRANCH

N. ISLAND FORD

E. ARCH

MINDEN (Boulevard) PL.

74

72

WESLEY CHAPEL  
C. M. E. CHURCH  
WESLEY ST. 215  
CORNER 215 & 217

BRANCH

71

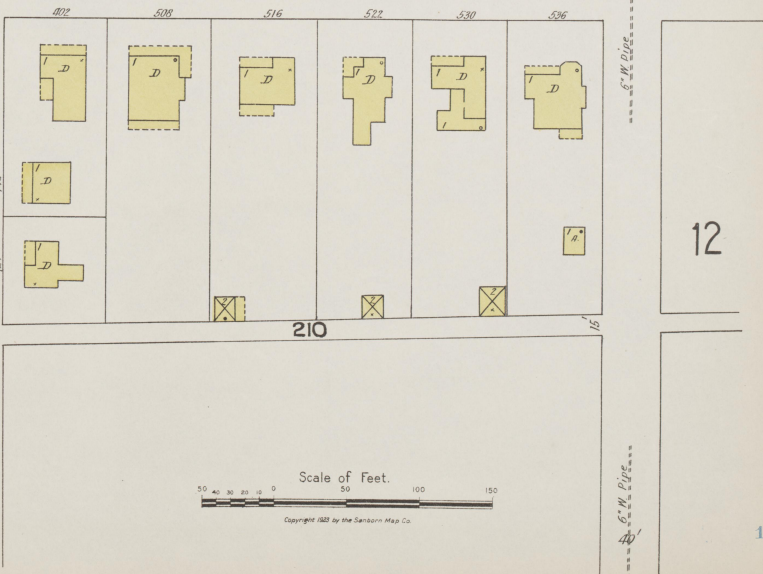
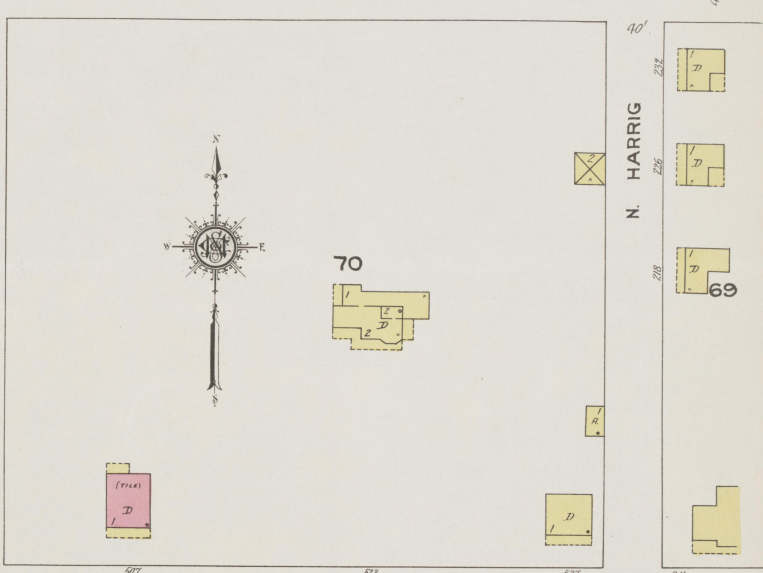
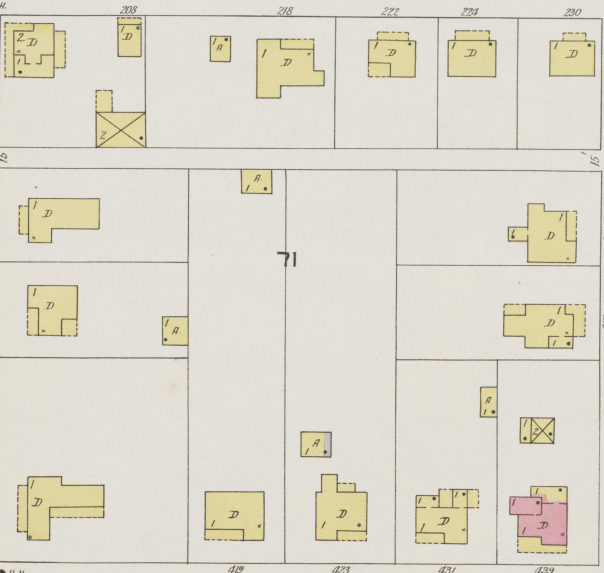
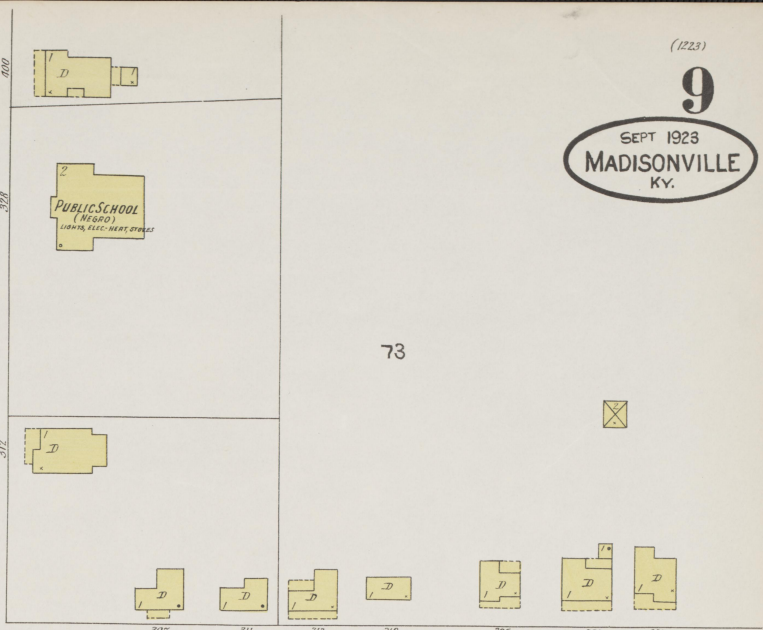
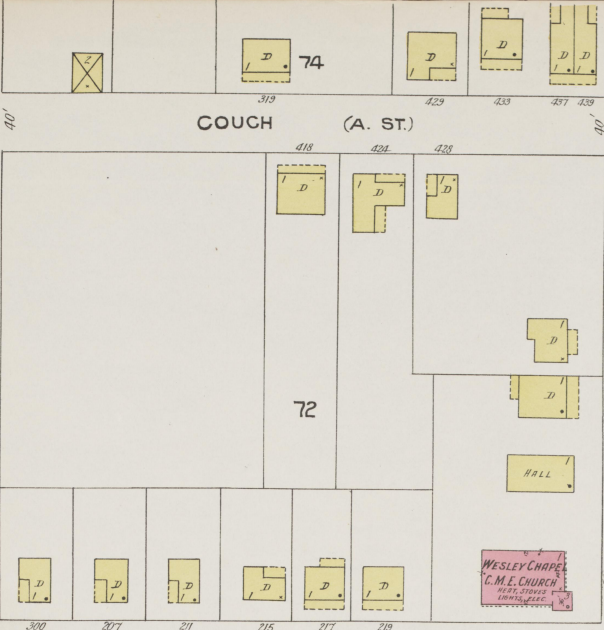
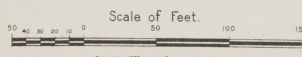
70

69

N. HARRIG

12

PUBLIC SCHOOL  
(NEGRO)  
LIVING SEC. WEST ST. 317



SEPT 1923.  
MADISONVILLE  
KY.

SCOTT  
N.

N. HARRIG

N. ISLAND FORD

From Plans

1st M. E. CHURCH SOUTH  
Wm. S. Starn, Pastor, Secy.

209

212

210

211

SIoux (Anastasia) PL.

12

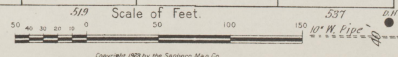
13

SCOTT  
S.

S. ISLAND FORD

S. HARRIG

E. BROADWAY





SEPT 1923.  
MADISONVILLE  
KY.

PRIMITIVE  
BAPTIST CHURCH  
1871  
1725  
1726  
1727  
1728

PRINTING

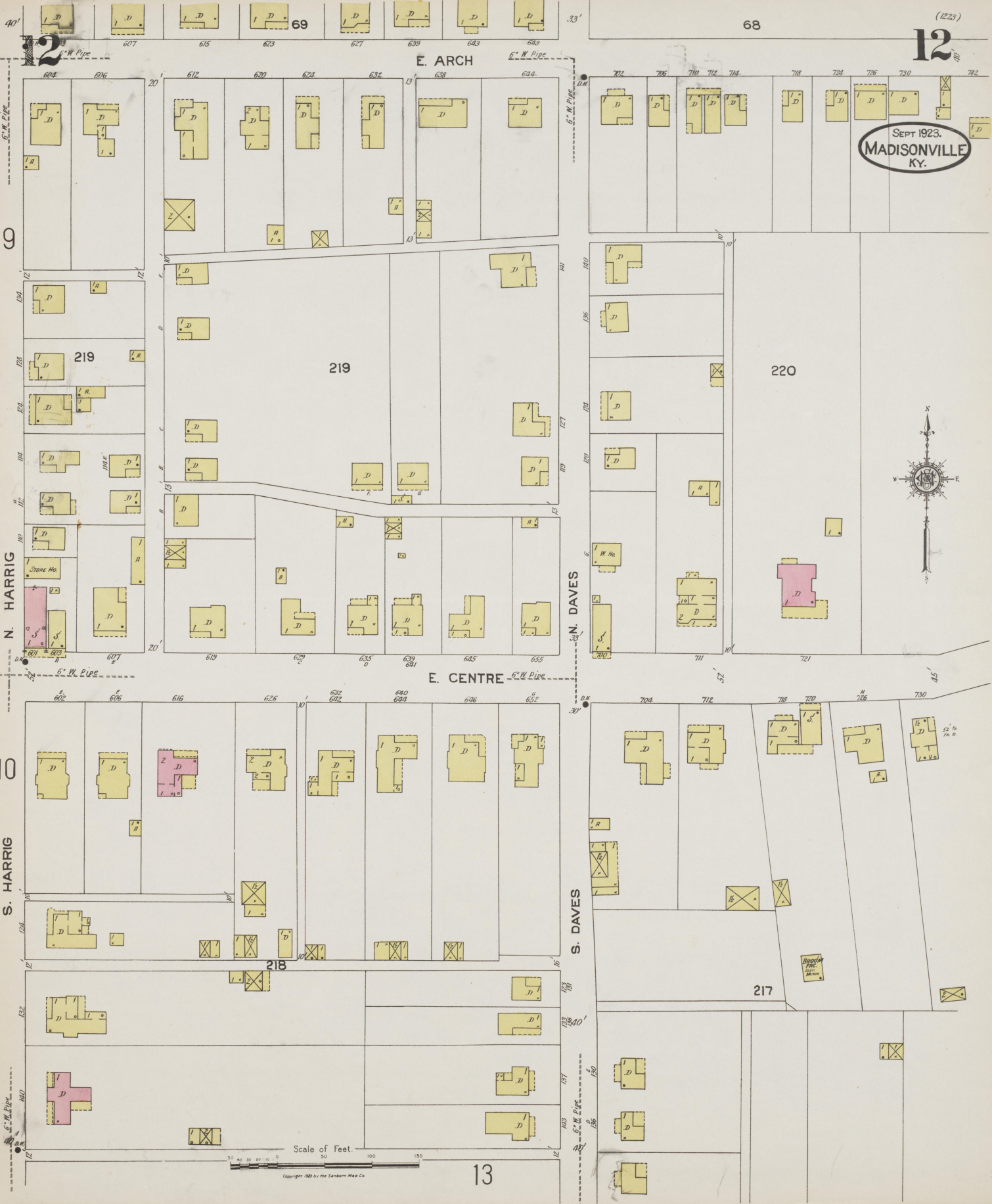
SPRING LAKE ICE CO.  
PUMP HO.

Lake

Scale of Feet.

Copyright 1923 by the Sanborn Map Co.

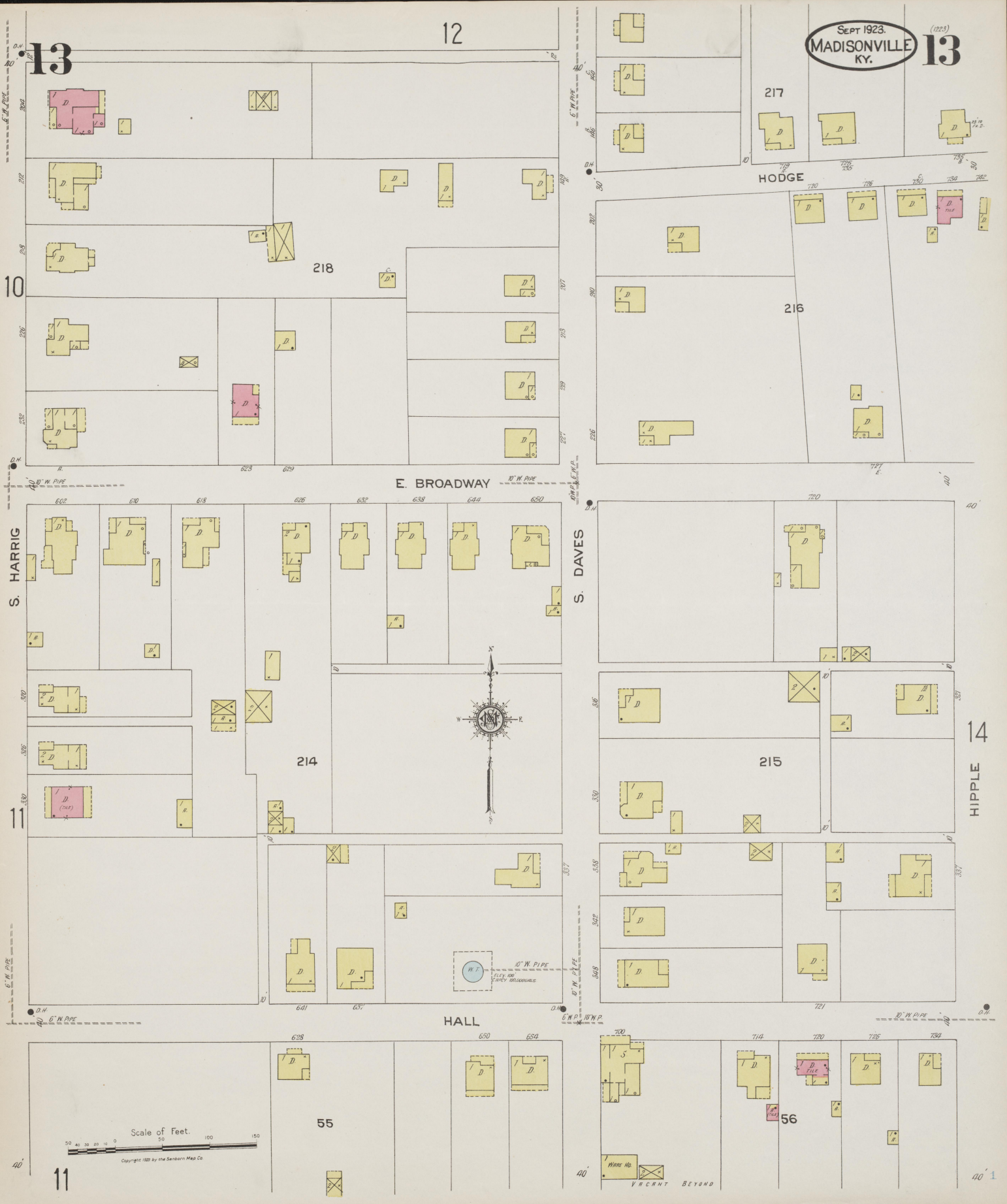
SEPT 1923.  
MADISONVILLE  
KY.



Scale of Feet  
0 50 100 150

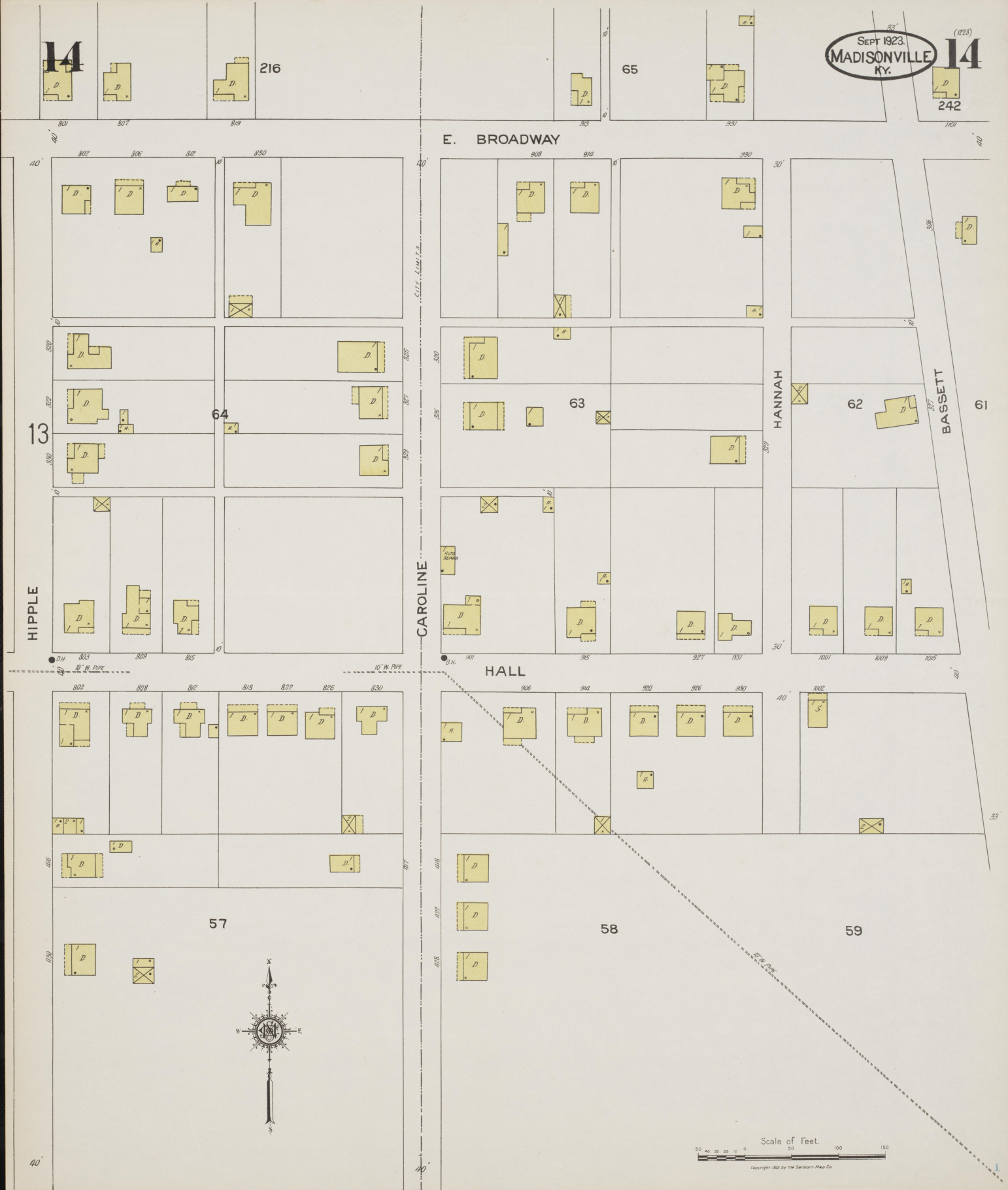
Copyright 1923 by the Standard Map Co.

SEPT 1923.  
MADISONVILLE  
KY. 13



11

40 1



CITY LIMITS

CAROLINE

E. BROADWAY

HANNAH

BASSETT

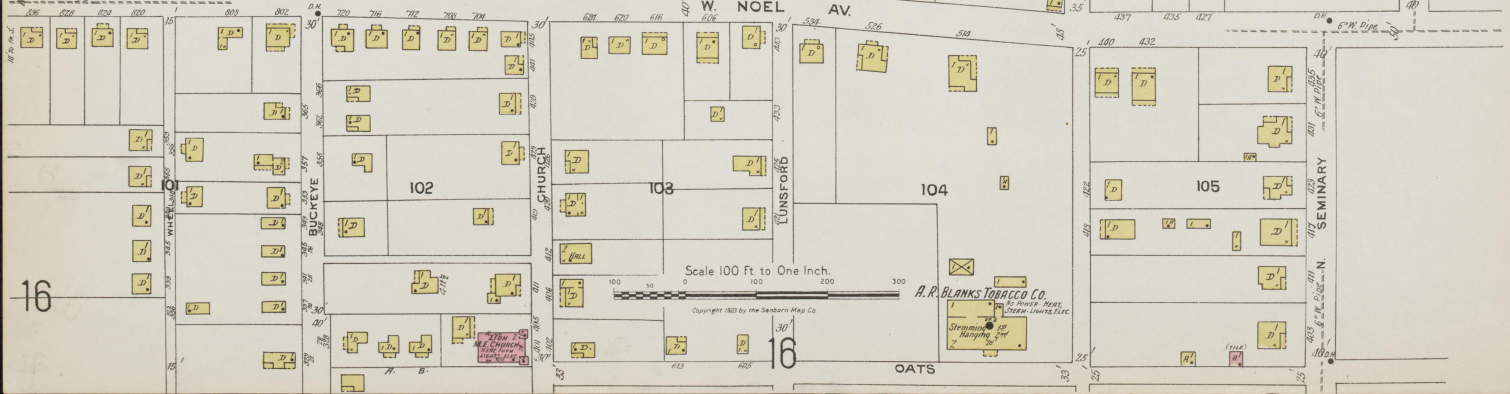
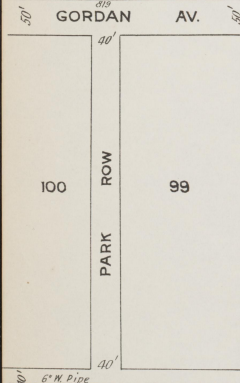
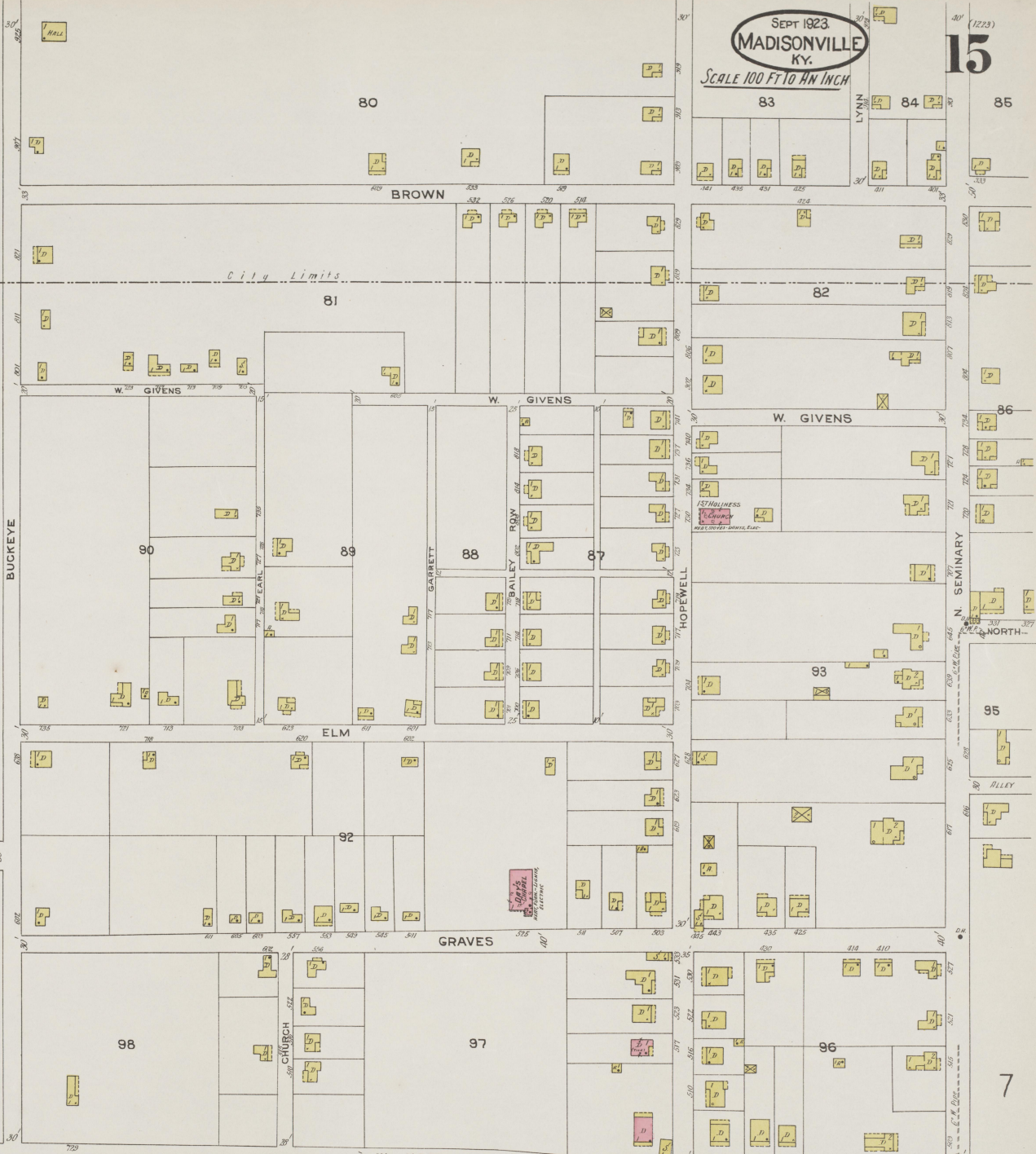
HALL

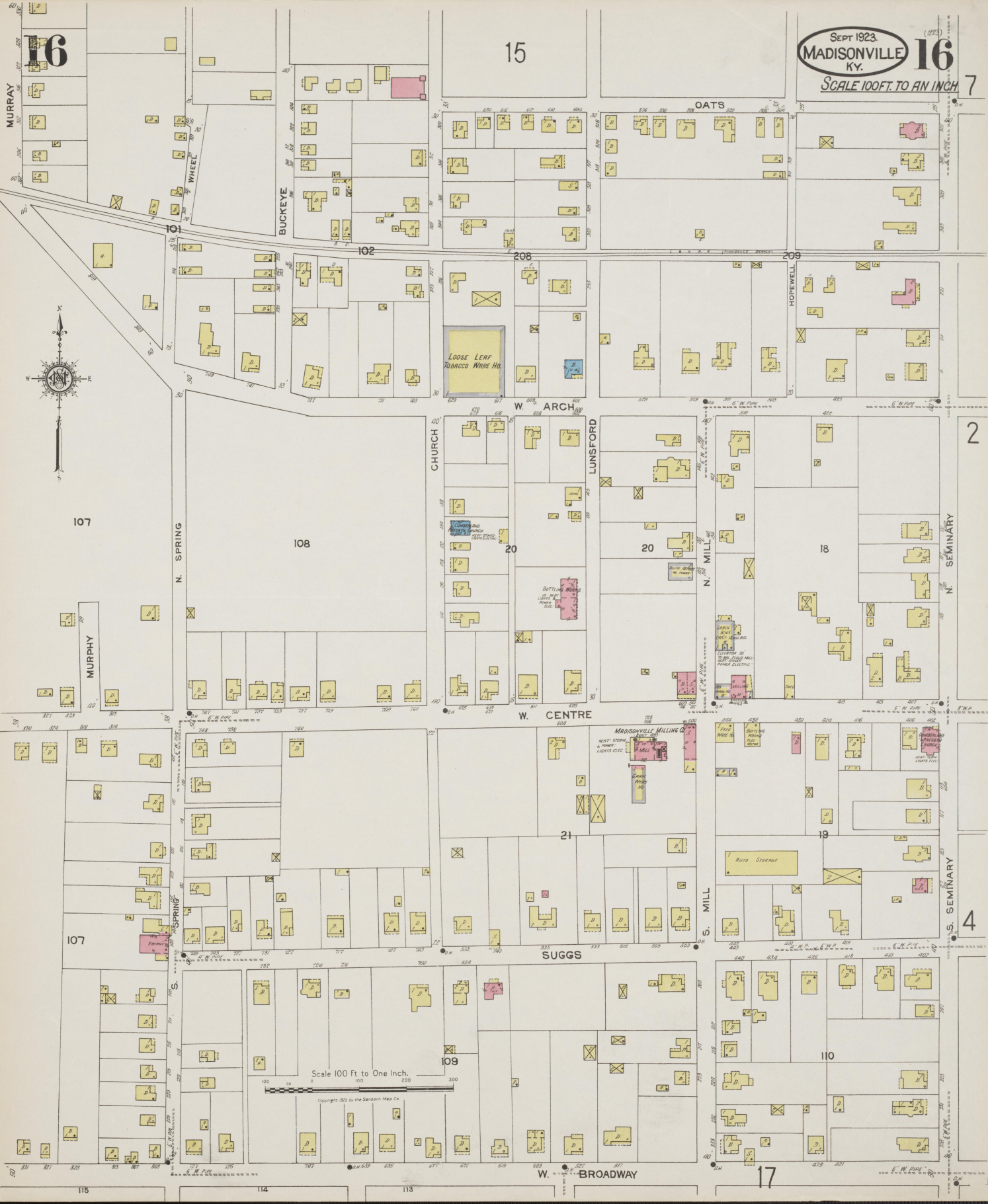
10" W. PIPE

Scale of Feet.

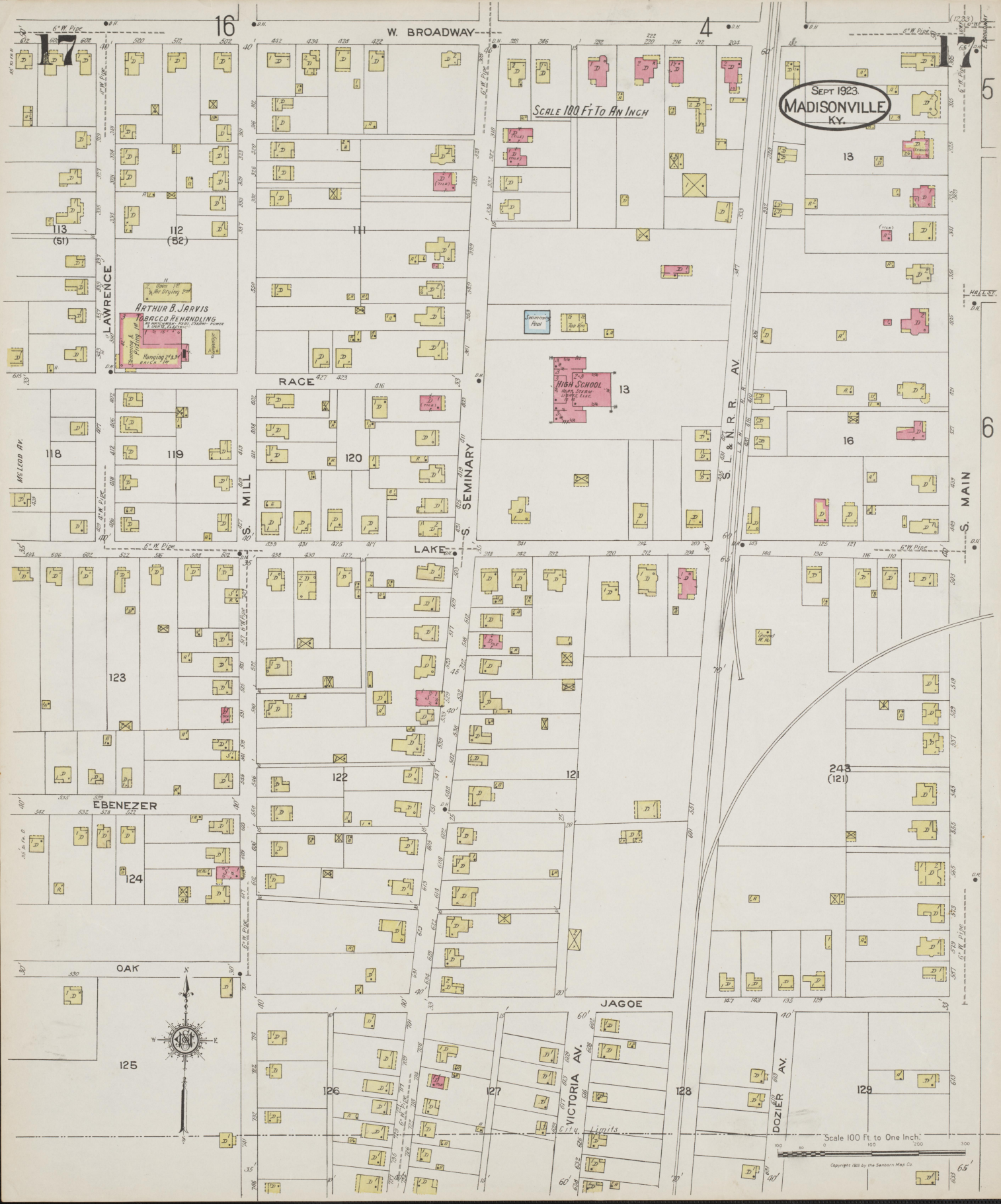
Copyright 1923 by the Sanborn Map Co.

SEPT 1923  
MADISONVILLE  
KY.  
SCALE 100 FT TO AN INCH







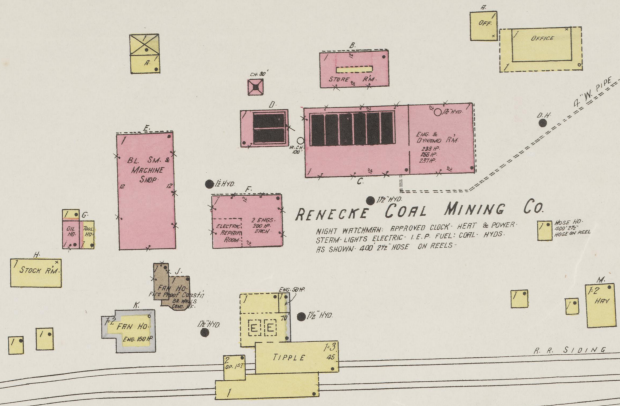


SEPT 1923  
MADISONVILLE  
KY.

SCALE 100 FT TO AN INCH

Scale 100 Ft to One Inch

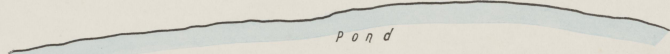
Copyright 1923 by the Standard Map Co.



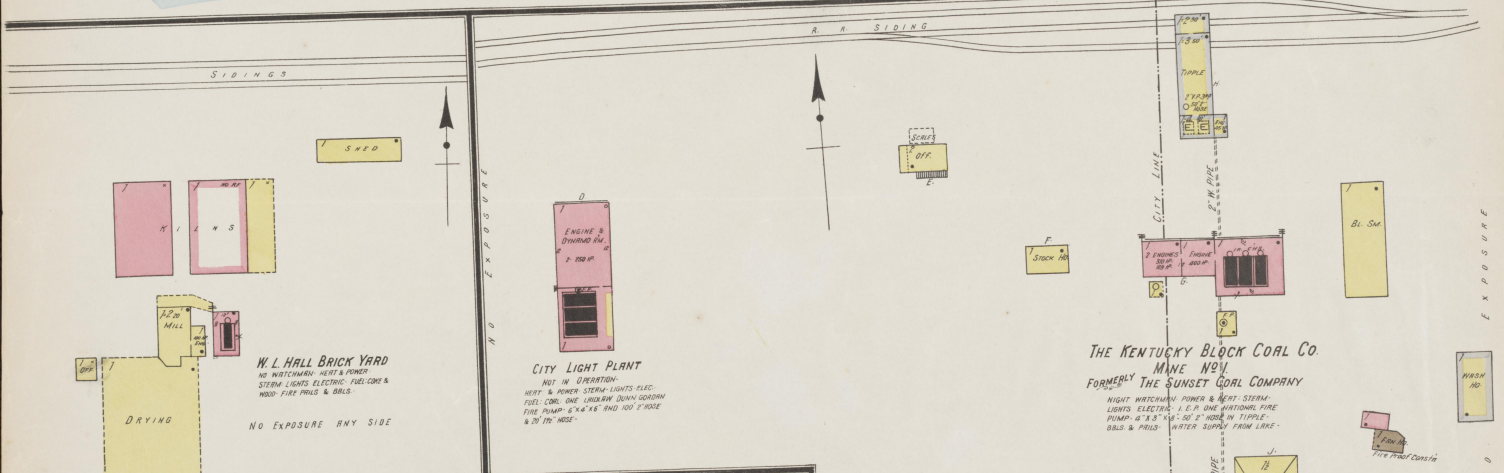
**RENECKE COAL MINING CO.**

NIGHT WATCHMAN. APPROVED CLOCK. HEAT & POWER.  
STEM. LIGHTS. ELECTRIC. I. E. P. FUEL. COAL. WYD.  
RS. SHOWING. 400' 170' HOSE. ON REELS.

Located 1 1/4 Miles N.W. of Court Ho.



Pond



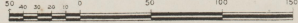
**THE KENTUCKY BLOCK COAL CO.  
FORMERLY THE SUNSET COAL COMPANY**

NIGHT WATCHMAN. POWER & HEAT. STEM. LIGHTS. ELECTRIC. I. E. P. ONE AIR-TIGHT FIRE PUMP. 2 3/4" X 3/4" 50' 2" HOSE IN TIPPLE. BRG. & PRG. WATER SUPPLY FROM LAKE.

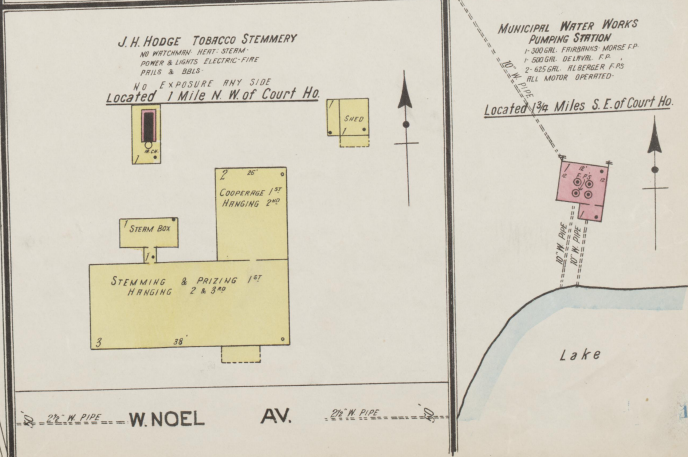
**THE KENTUCKY BLOCK COAL CO.  
MINE NO. 2  
FORMERLY THE COIL COAL COMPANY**

WATCHMAN. NO CLOCK. HEAT & POWER. STEM. LIGHTS. ELECTRIC. CITY WATER. WYD. & HOSE RS. SHOWN.  
NO EXPOSURE ANY SIDE

Scale of Feet.



Copyright 1923 by The Sanborn Map Co.



**J.H. HODGE TOBACCO STEMMEY**

NO WATCHMAN. HEAT. STEM. POWER & LIGHTS. ELECTRIC-FIRE PUMP & BILLS.  
NO EXPOSURE ANY SIDE  
Located 1 Mile N.W. of Court Ho.

**MUNICIPAL WATER WORKS PUMPING STATION**

1-300 GAL. FURBERG'S MOTOR P.P.  
1-500 GAL. BELMONT. P.P.  
2-425 GAL. REBERGER P.P.S.  
ALL MOTOR OPERATED.  
Located 1/4 Miles S.E. of Court Ho.