

see blue  
\*in everything we do.

Fact Booklet 2007 - 2008

UK  
UNIVERSITY  
OF KENTUCKY



# Table of Contents

Letter from President Lee T. Todd, Jr.	2-3	Grant and Contract Awards	29
UK Vision and Mission	4	Research and Development	30
Enrollment	5-9	University Endowment	31
First-year Student Profile	10-11	New and Renovated Facilities	32
Retention and Graduation Rates	12-13	Land and Space	33
Degrees Conferred	14-16	General Equipment Inventories	34
Annual Tuition and Fees	17	Library Collections	35
Full-time Employees	18-19	Benchmark Institutions	36
Alumni and Student Origin Maps	20-21	Administrative Organization	37
Faculty Statistics	22-24	Board of Trustees	38
Faculty Salaries	25	Administrative History	39
Budgeted Revenue and Expenditures	26-27	UK Values	40
Private Giving	28		

December 2007

In compliance with KRS 164.250, I am pleased to provide you with the 2007-2008 Fact Booklet, a collection of current facts and statistics about the people and programs at the University of Kentucky. Our stakeholders and the general public will find many items of interest in this booklet, including statistics on enrollments, retention, research expenditures, and faculty salaries. A summary of the 2007-2008 Operating and Capital Budget is also presented.

We are proud of the fact that the University of Kentucky awarded a record number of degrees last year. Over 5,600 students earned degrees in 2006-07, a 2.4 percent increase over the previous year. UK also has engaged in efforts to encourage students who left the University without earning a degree to resume their studies. We have become a full partner in Project Graduate, a statewide program designed to make completing a degree as convenient as possible for former students.

We are pleased that the preliminary six-year graduation rate has increased over last year and appears to be tied for the highest rate on record. In addition, the graduation rate for African American students jumped five percentage-points, a noteworthy gain in one year. And the retention rate of first-year African American students surpassed the University's overall retention rate for the second time in five years. We are hopeful that our new "early warning system" will boost overall retention rates by providing academically at-risk students with the advising and support they need to succeed.

UK's Top 20 Business Plan calls for hiring additional faculty members to improve instruction for a growing student body and enhance our research and engagement efforts. The Plan places great importance on competitive salaries, benefits and professional support to attract and retain outstanding faculty. Since fall 2004, faculty salaries have increased from 86.9 percent to 89.2 percent of our benchmark institutions' median salary. Clearly, much still needs to be done to recruit, develop and retain a distinguished faculty.

Several new facilities are expected to come on-line in the near future to create the space needed for our teaching, research and service programs. These buildings include a biological pharmaceutical complex building, a new patient care facility, and a student health facility. We also are renovating a number of older facilities, including: the Chemistry-Physics Building, the Thomas Hunt Morgan Biological Science Building, the M.L. King Library, and the Boone Faculty Center.

Establishing a national reputation is not an end in itself. Our mission calls upon us to improve people's lives through the excellence of our teaching, research, and service. Our prominence as a Top 20 university will be judged, in the end, by our effectiveness in solving Kentucky's most urgent social, economic, and health-related problems.

Sincerely,

A handwritten signature in black ink, appearing to read "Lee T. Todd, Jr.", written in a cursive style.

Lee T. Todd, Jr.  
President

# VISION

The University of Kentucky will be one of the nation's 20 best public research universities, an institution recognized world-wide for excellence in teaching, research, and service and a catalyst for intellectual, social, cultural, and economic development.

# MISSION

The University of Kentucky is a public, research-extensive, land grant university dedicated to improving people's lives through excellence in teaching, research, health care, cultural enrichment, and economic development.

The University of Kentucky:

- Facilitates learning, informed by scholarship and research.
- Expands knowledge through research, scholarship and creative activity.
- Serves a global community by disseminating, sharing and applying knowledge.

The University, as the flagship institution, plays a critical leadership role for the Commonwealth by contributing to the economic development and quality of life within Kentucky's borders and beyond. The University nurtures a diverse community characterized by fairness and equal opportunity.

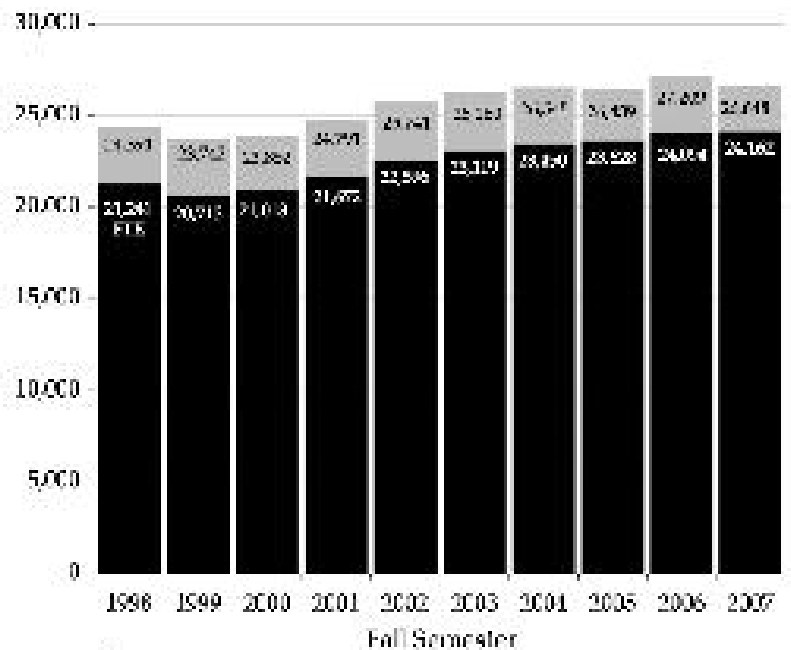
— Adopted by the Board of Trustees, October 10, 2006

# ENROLLMENT - Headcount and Full-time Equivalent

## Fall 2007 Headcount

Level	Full-time	Part-time	Total
Undergraduate	16,779	1,991	18,770
Graduate	3,874	1,669	5,543
First Professional	1,534	9	1,543
Subtotal (IPEDS)	22,187	3,669	25,856
UG Auditors	0	60	60
Postdoctoral	228	0	228
House Staff	504	0	504
Total (CRE)	22,919	3,729	26,648

Fall 2007 enrollments are preliminary. FTE figures are calculated by adding the number of full-time students to one-third of the part-time students enrolled.



## ENROLLMENT - Fall 2007 at a Glance

		<u>% of Total</u>
<b>Men</b>	12,707	47.7
<b>Women</b>	13,941	52.3
<b>Total</b>	<b>26,648</b>	<b>100.0</b>

<b>Full-time</b>	22,919	86.0
<b>Part-time</b>	3,729	14.0
<b>Total</b>	<b>26,648</b>	<b>100.0</b>

<b>Resident</b>	20,218	75.9
<b>Non-resident</b>	6,430	24.1
<b>Total</b>	<b>26,648</b>	<b>100.0</b>

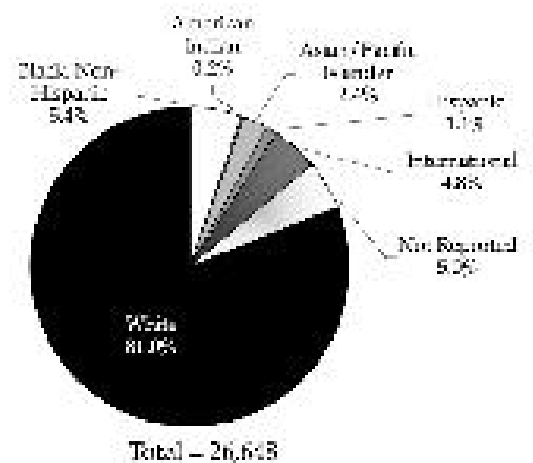
		<u>% of Total</u>
Freshmen	5,395	20.2
Sophomores	3,799	14.3
Juniors	3,888	14.6
Seniors	5,342	20.0
UG Non-degree	406	1.5
<b>Subtotal Undergraduate</b>	<b>18,830</b>	<b>70.7</b>
Master/Specialist	2,776	10.4
Doctoral	2,300	8.6
Graduate Non-degree	467	1.8
<b>Subtotal Graduate</b>	<b>5,543</b>	<b>20.8</b>
First Professional	1,543	5.8
House Staff/Post Doctoral	732	2.7
<b>Total</b>	<b>26,648</b>	<b>100.0</b>

Note: Percentages may not total properly due to rounding.

Fall 2007 enrollments are preliminary.

# ENROLLMENT - Fall 2007 by Race/Ethnicity

	Undergrad.	Grad.	First Prof.	Post Doc.	House Staff	Total
Black, Non-Hispanic	1,064	297	73	7	5	1,446
Amer. Indian/ Alaskan Native	45	10	4	0	0	59
Asian/Pacific Islander	394	104	72	30	40	640
Hispanic	198	79	14	3	10	304
International	185	958	23	97	15	1,278
Not Reported	578	458	101	61	130	1,328
White	16,366	3,637	1,256	30	304	21,593
<b>Total</b>	<b>18,830</b>	<b>5,543</b>	<b>1,543</b>	<b>228</b>	<b>504</b>	<b>26,648</b>



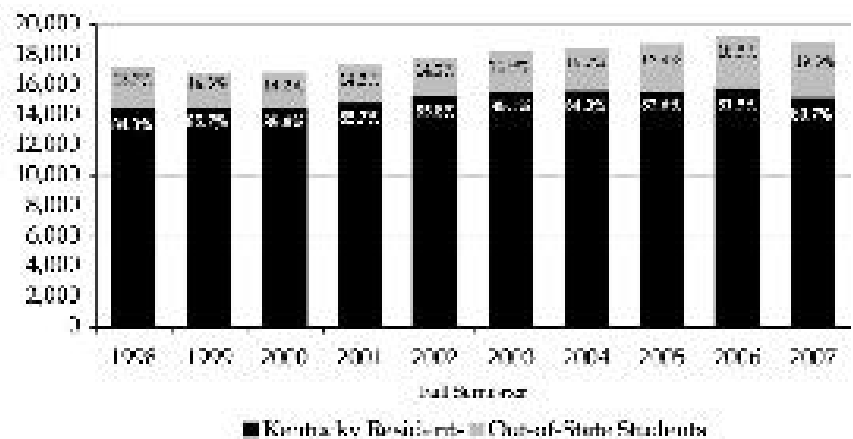
Fall 2007 enrollments are preliminary.



# UNDERGRADUATES - by Residency Status

	<u>Kentucky Residents</u>	<u>Out-of-State Students</u>
Fall 2007	15,196	3,634
Fall 2006	15,757	3,571
Fall 2005	15,481	3,251
Fall 2004	15,587	2,905
Fall 2003	15,486	2,704
Fall 2002	15,348	2,530
Fall 2001	14,820	2,464
Fall 2000	14,499	2,400
Fall 1999	14,441	2,406
Fall 1998	14,461	2,696

Number of Undergraduates Enrolled by Residency Status



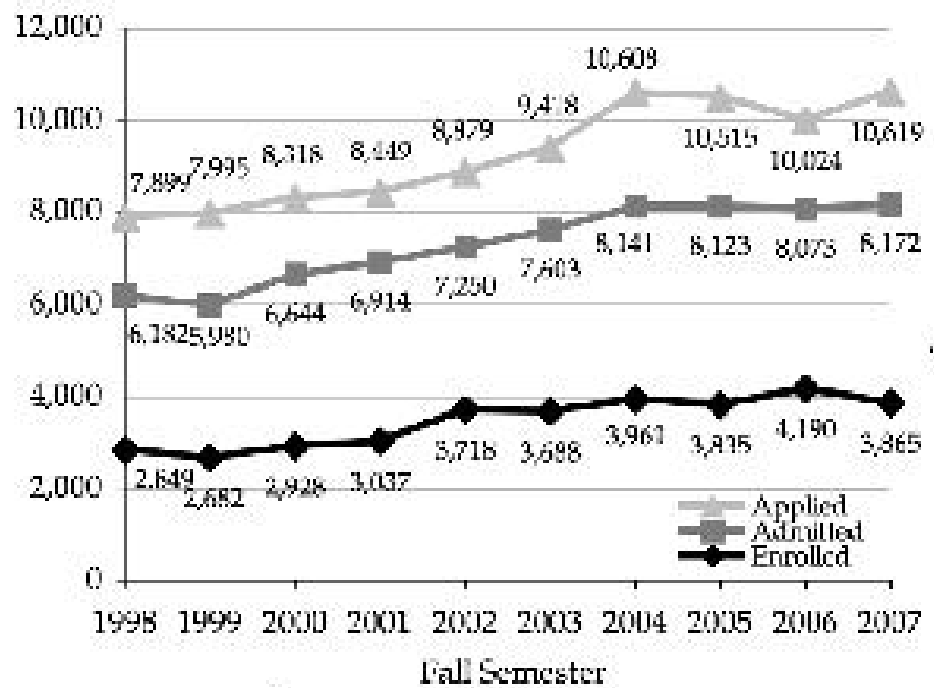
Fall 2007 enrollments are preliminary.

# APPLIED, ADMITTED and ENROLLED

## First-year Students Fall 2007

Applied 10,619  
Admitted 8,172  
Enrolled 3,865

Admit. Rate 77.0%  
Yield Rate 47.3%

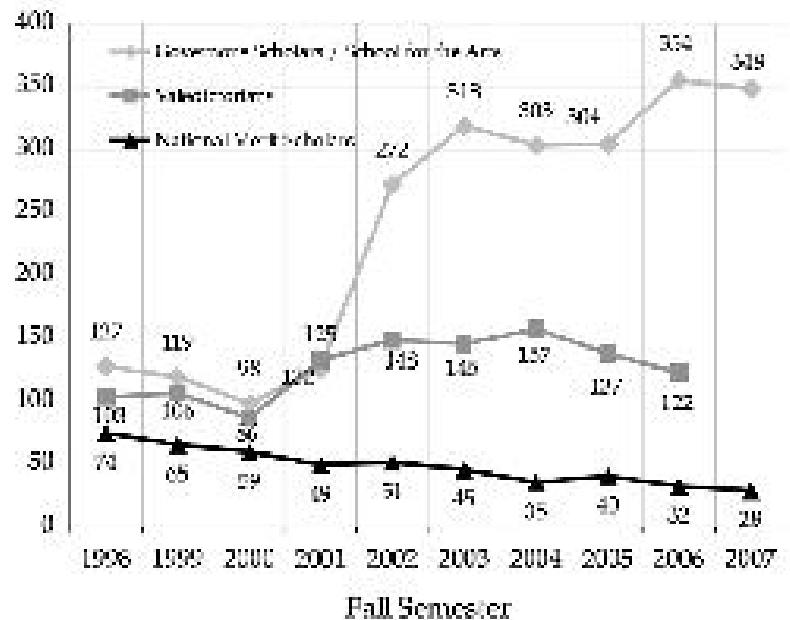


Fall 2007 enrollments are preliminary.

# FIRST-YEAR STUDENT PROFILE

In fall 2007, the University enrolled 3,865 first-year students, with one-third of the class presenting a GPA of 3.8 or higher, and including:

- 348 Governor's Scholars and Governor's School for the Arts
- 28 National Merit Scholars



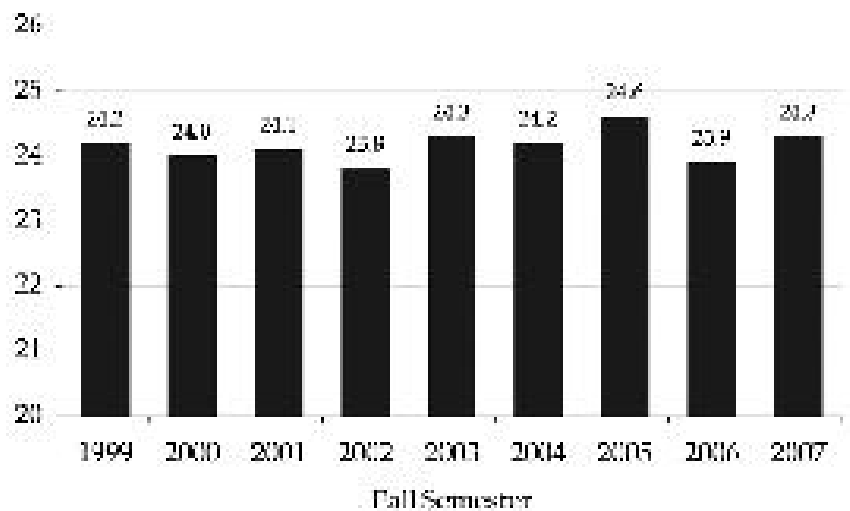
Note: Data on the number of valedictorians was not collected in 2007.

# ACT Scores - Entering First-year Students

<u>Year</u>	<u>N</u>	<u>Mean</u>	<u>25th/75th Percentile</u>
Fall 2007	3,532	24.3	21/27
Fall 2006	3,864	23.9	21/26
Fall 2005	3,453	24.5	22/27
Fall 2004	3,609	24.2	21/27
Fall 2003	3,385	24.3	22/27
Fall 2002	3,391	23.8	21/26
Fall 2001	2,881	24.1	21/26
Fall 2000	2,755	24.0	21/26
Fall 1999	2,547	24.2	22/27

Note: Some students submit SAT scores rather than ACT scores. These students' scores are not reflected in the table and graph.

Average ACT Scores of First-year Students

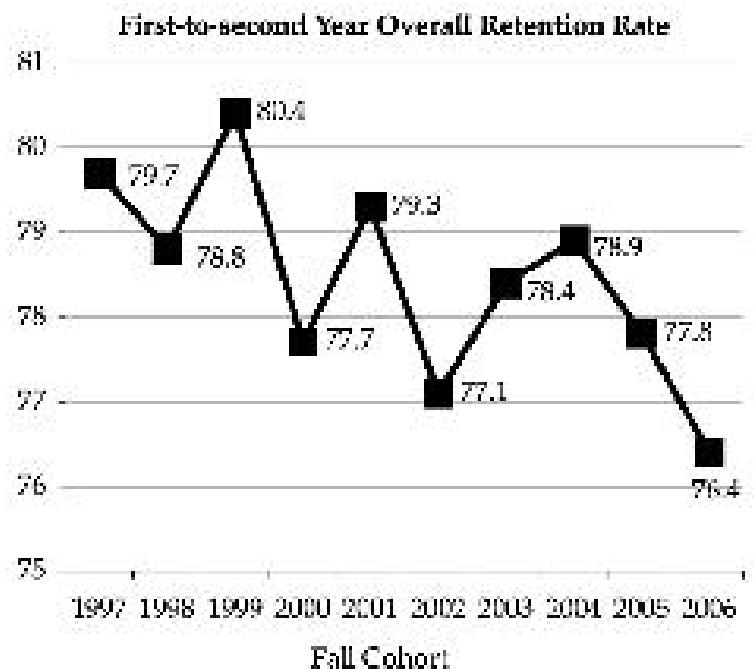


# RETENTION RATE

## First-to-second Year Retention Rate\*

Cohort	Overall	Black, Non-Hispanic Other		
		White	Black, Non-Hispanic	Other
2006	76.4	76.3	76.6	77.7
2005	77.8	78.0	76.1	76.4
2004	78.9	79.6	69.0	80.5
2003	78.4	78.4	72.8	83.1
2002	77.1	77.3	78.0	71.5
2001	79.3	79.3	77.5	81.1
2000	77.7	77.7	77.7	79.7
1999	80.4	80.7	77.2	78.0
1998	78.8	79.0	80.3	71.5
1997	79.7	80.1	79.7	70.9

\*Retention rates apply to first-time, full-time, degree-seeking students; the fall 2006 cohort numbers are preliminary.



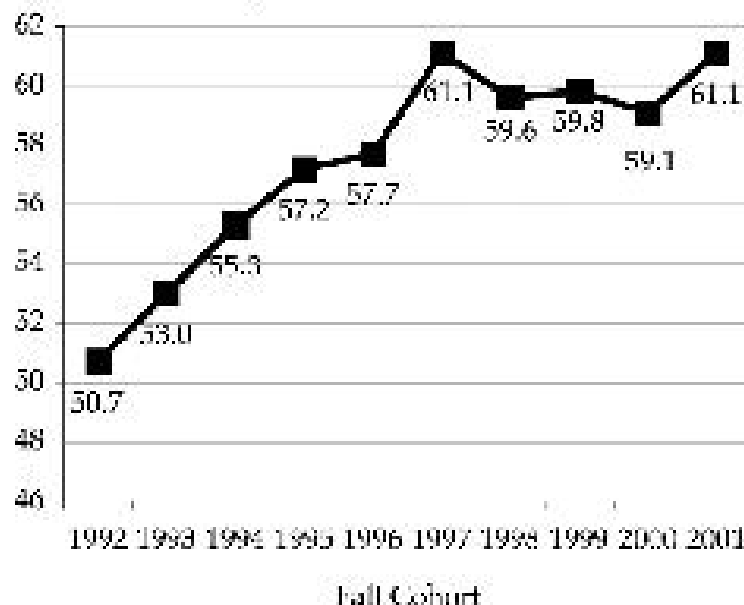
# GRADUATION RATE

Six-year Graduation Rate\*

Cohort	Overall	White	Black, Non-Hispanic	Other
2001	61.1	62.2	50.3	48.8
2000	59.1	60.6	45.0	50.5
1999	59.8	60.8	46.2	57.1
1998	59.6	60.2	49.7	61.4
1997	61.1	62.2	49.0	59.4
1996	57.7	59.1	43.2	53.9
1995	57.2	58.2	38.5	63.2
1994	55.3	57.1	35.4	48.2
1993	53.0	54.8	32.5	52.3
1992	50.7	52.0	36.1	46.6

\*Graduation rates apply to first-time, full-time, degree-seeking students; the fall 2001 cohort numbers are preliminary.

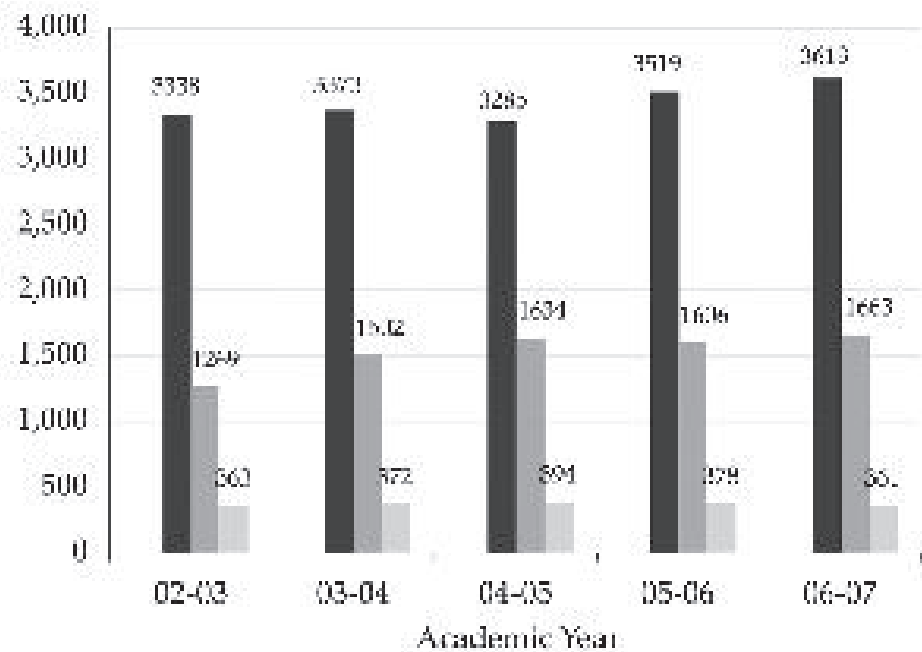
Six-year Overall Graduation Rate



# DEGREES CONFERRED

## 2006-2007

■ Baccalaureate	3,613
■ Graduate	1,663
■ First Professional	361



# DEGREES CONFERRED - By College

2006-2007

College	Bacc.	Mast.*	Doc.	First Prof.	College	Bacc.	Mast.*	Doc.	First Prof.
Agriculture	489	77	33	-	Grad. School	-	80	10	-
Arts & Sciences	961	135	82	-	Health Sciences	86	143	4	-
Business & Economics	643	188	10	-	Law	-	-	-	122
Comm. & Info. Studies	371	110	9	-	Medicine	-	19	27	93
Dentistry	-	5	-	50	Nursing	90	38	11	-
Design	81	17	-	-	Pharmacy	-	1	12	96
Education	325	243	30	-	Public Health	-	29	12	-
Engineering	337	161	41	-	Social Work	75	100	3	-
Fine Arts	155	25	8	-	<b>Total</b>	<b>3,613</b>	<b>1,371</b>	<b>292</b>	<b>361</b>

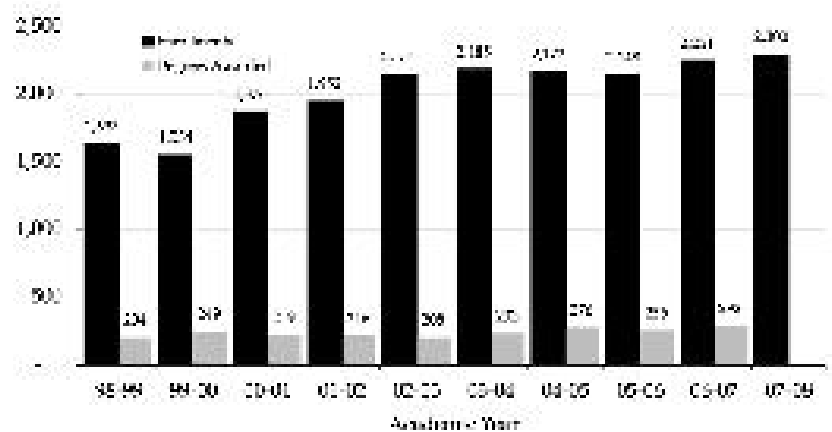
\* Includes Specialist degrees



# DOCTORATES - Enrollments and Degrees Awarded

<u>Year</u>	<u>Fall Enrollment</u>	<u>Degrees Awarded</u>
2007-08	2,300	
2006-07	2,251	292
2005-06	2,148	256
2004-05	2,172	276
2003-04	2,185	233
2002-03	2,154	208
2001-02	1,952	216
2000-01	1,876	219
1999-00	1,554	249
1998-99	1,633	204

Number of Doctoral Students Enrolled and Doctoral Degree Recipients



Note1: Doctoral enrollments are based on the number of students enrolled in doctoral programs during the fall semester of a given academic year.

Note2: The number of doctoral degree recipients for 2007-08 is not yet available.

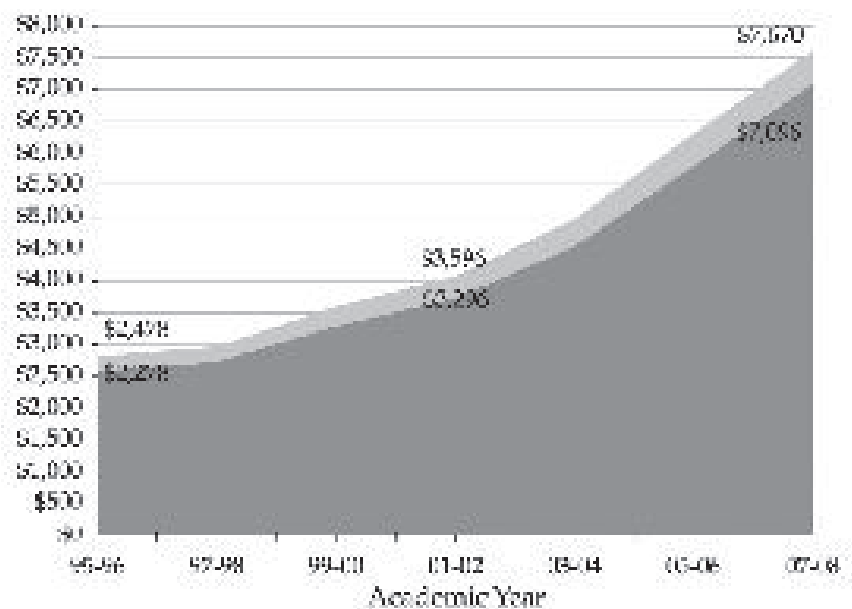
# ANNUAL TUITION and FEES

## 2007-2008

<u>Resident</u>	<u>Tuition</u>	<u>Fees</u>
■ Graduate	\$ 6,876	\$ 794
■ Undergraduate		
- Lower Division	6,302	794
- Upper Division	6,508	794
<u>Non-resident</u>	<u>Tuition</u>	<u>Fees</u>
Graduate	\$ 15,364	\$ 794
Undergraduate		
- Lower Division	14,102	794
- Upper Division	14,300	794

Note: Beginning in 2004-05, undergraduates in upper and lower divisions are charged different rates of tuition. The tuition rate in the graph reflects the rate for lower division students.

Resident Tuition and Fees Combined



# FULL-TIME EMPLOYEES

**2006-2007**

Full-Time Employees	President's Office	Provost				Total	% Total
		Educational Units	Administration <sup>1</sup> Support	Finance and Administration	Health Affairs		
Exec. / Admin. / Managerial	31	186	97	80	78	472	4.2%
Faculty	0	1,965	0	0	0	1,965	17.5%
Library Faculty	0	63	0	0	0	63	0.6%
Other Professional	160	1,658	488	313	874	3,493	31.1%
Secretarial / Clerical	73	1,247	376	207	427	2,330	20.8%
Tech. / Paraprofessional	22	873	114	152	263	1,424	12.7%
Skilled Crafts	6	32	7	160	1	206	1.8%
Service / Maintenance	7	187	140	662	270	1,266	11.3%
<b>Total</b>	<b>299</b>	<b>6,211</b>	<b>1,222</b>	<b>1,574</b>	<b>1,913</b>	<b>11,219</b>	<b>100.0%</b>

Note 1: The President's Office includes staff from the Athletics Department.

Note 2: Starting in 2006-07 Library faculty are reported to the federal government in the Other Professional Category. For this publication, Library Faculty are classified separately.

# FULL-TIME EMPLOYEE DEMOGRAPHICS

**2006-2007**

Full-time Employees	Black, Non-Hispanic	American Indian/ Alaskan Native	Asian/ Pacific Islander	Hispanic	White	Female	Male
Exec./Admin./Managerial	23	0	6	3	440	221	251
Faculty	66	1	225	26	1,647	630	1,335
Library Faculty	2	0	1	0	60	49	14
Other Professional	143	7	205	13	3,125	2,160	1,333
Secretarial/Clerical	312	1	25	9	1,983	2,064	266
Tech./Paraprofessional	121	0	69	10	1,224	841	583
Skilled Crafts	30	0	3	0	173	5	201
Service/Maintenance	412	2	19	2	831	539	727
<b>Total</b>	<b>1,109</b>	<b>11</b>	<b>553</b>	<b>63</b>	<b>9,483</b>	<b>6,509</b>	<b>4,710</b>

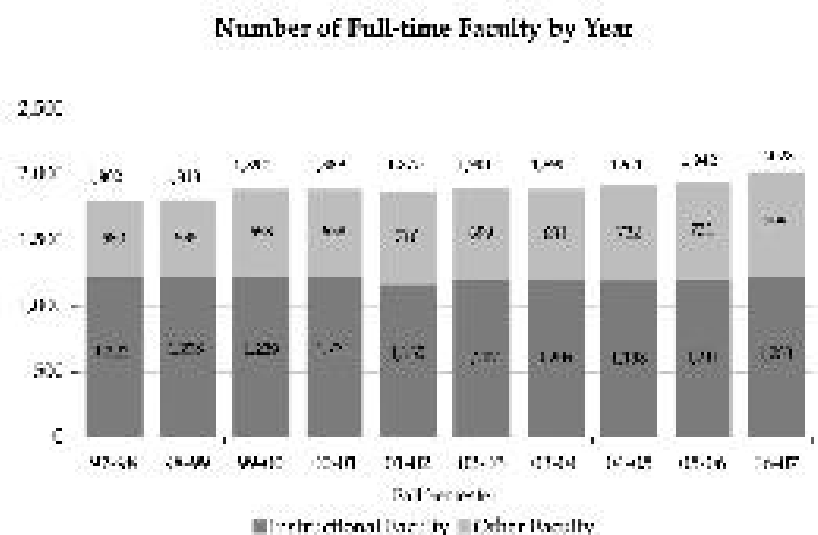




# FULL-TIME FACULTY - Historical Trends

	<u>Instructional Faculty</u>	<u>Other Faculty</u>
2006-2007	1,233	795
2005-2006	1,211	731
2004-2005	1,198	722
2003-2004	1,209	681
2002-2003	1,202	699
2001-2002*	1,165	710
2000-2001	1,231	658
1999-2000	1,239	653
1998-1999	1,228	585
1997-1998	1,222	580

Note: Beginning in 2001-2002, changes in the federal definition of 'Instructional Faculty' excluded 'Extension Faculty;' however, Lecturers are now included. 'Other Faculty' now includes those with Extension, Clinical, Research and Library faculty series designations.



# FACULTY DEMOGRAPHICS

## Tenured and Tenure-track Faculty 2006-2007

Full-time Faculty	Black, Non-Hispanic		American Indian/ Alaskan Native		Asian/ Pac. Islander		Hispanic		White	
	M	F	M	F	M	F	M	F	M	F
Professors	4	5	0	0	49	7	4	1	459	95
Associate Professors	18	11	1	0	27	8	1	2	324	202
Assistant Professors	7	12	0	0	48	19	7	2	170	105
Instructors	0	0	0	0	0	1	0	0	4	0
<b>Total</b>	<b>29</b>	<b>28</b>	<b>1</b>	<b>0</b>	<b>124</b>	<b>35</b>	<b>12</b>	<b>5</b>	<b>957</b>	<b>402</b>



## FACULTY - By Rank and Title Series: 2006-2007

### Tenured/Tenure-track

Rank	Regular	Librarian	Extension	Spec. Title	Total
Professors	499	25	40	60	624
Associate	400	29	19	146	594
Assistant	272	4	11	83	370
Instructor		5			5
<b>Total</b>	<b>1,171</b>	<b>63</b>	<b>70</b>	<b>289</b>	<b>1,593</b>

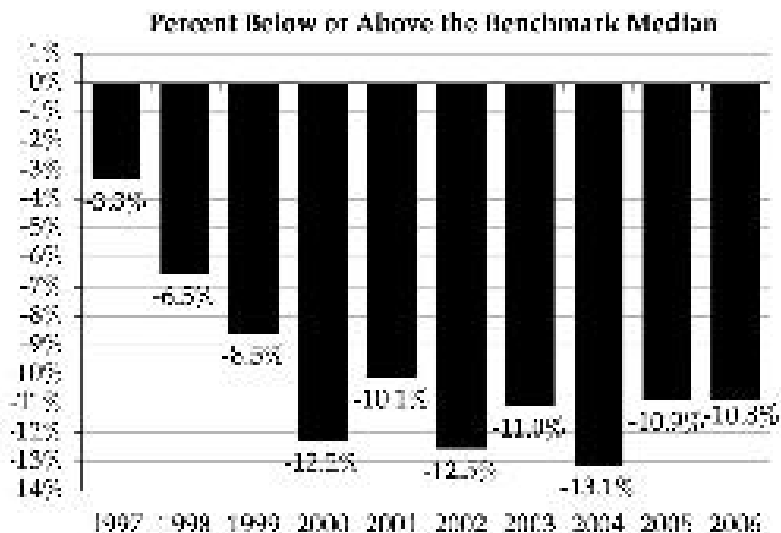
### Non-tenure Track

Rank	Clinical	Research	Lecturer	Other	Total
Professors	17	9		4	30
Associate	44	10			54
Assistant	123	66		15	204
Instructor	24			22	46
Senior Lecturer			11		11
Lecturer			90		90
<b>Total</b>	<b>208</b>	<b>85</b>	<b>101</b>	<b>41</b>	<b>435</b>

# FACULTY SALARIES

Fall	All-ranks Average Salary	Benchmark Median Salary
2006	\$ 76,065	\$ 85,300
2005	73,685	82,664
2004	71,026	81,713
2003	69,911	78,594
2002	66,953	76,547
2001	66,713	74,184
2000	64,842	73,892
1999	62,314	68,138
1998*	60,714	64,954*
1997	58,660	60,644

\* Using a revised set of benchmark institutions



## REVENUE (In Millions)

Source of Funds	Revised Budget	Budget
	2006-07	2007-08
State Appropriation	\$ 318.6	\$ 336.2
Tuition and Fees	221.6	254.5
County Appropriation	13.6	14.5
Endowment and Investment Income	31.0	33.3
Federal Governmental Appropriations	15.3	15.9
Gifts, Grants and Contracts	172.3	202.6
Sales and Services of Educational Activities	74.9	82.5
Transfers	45.8	45.5
Fund Balances	85.4	66.9
Affiliated Corporations	327.0	337.2
Hospital	587.6	683.1
<b>Total</b>	<b>\$ 1,893.0</b>	<b>\$ 2,072.2</b>

Note: Revised budget numbers do not total properly due to rounding.



## EXPENDITURES (In Millions)

<b>Program</b>	<b>Revised Budget 2006-07</b>	<b>Budget 2007-08</b>
Instruction	\$ 253.4	\$ 285.3
Research	257.3	274.0
Public Service	231.1	244.0
Libraries	22.8	24.2
Academic Support	69.2	82.5
Student Services	22.5	27.7
Institutional Support	169.2	153.5
Operations and Maintenance	52.5	54.8
Student Financial Aid	81.6	87.5
Auxiliary Enterprises		
Operations	121.8	131.8
Mandatory Transfers	23.0	22.8
Hospital	588.7	684.2
<b>Total</b>	<b>\$ 1,893.0</b>	<b>\$ 2,072.2</b>

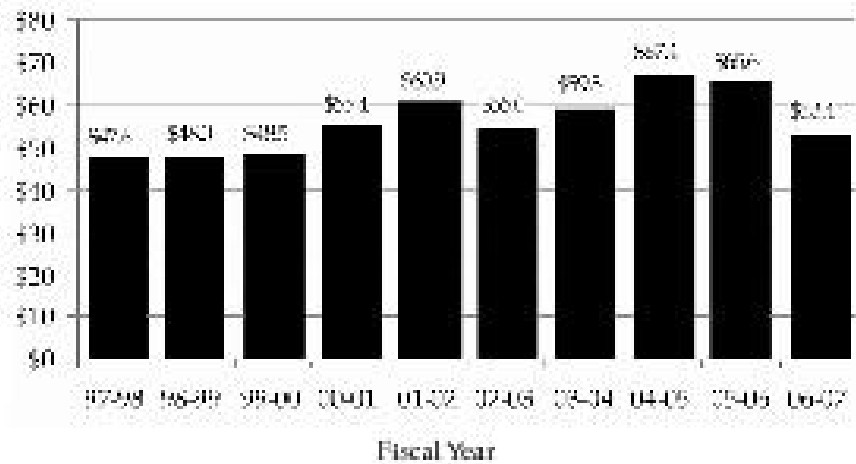
<b>Category</b>	<b>Revised Budget 2006-07</b>	<b>Budget 2007-08</b>
Personnel Services	\$ 945.1	\$ 1,047.2
Operating Expenses	873.7	927.1
Capital Outlay	45.5	61.3
Mandatory Transfers	28.8	36.7
<b>Total</b>	<b>\$ 1,893.0</b>	<b>\$ 2,072.2</b>

Note: Numbers do not total properly due to rounding.

## PRIVATE GIVING (In Millions)

### 2006-2007

Alumni	\$ 14.6
Non-alumni	10.9
Corporations	14.8
Foundations	7.2
Trusts/ Associations	5.9
<b>Total</b>	<b>\$ 53.4</b>



Note: Beginning in 1998-99, Private Giving no longer includes the Community College System, except LCC. With the transfer of LCC to the KCTCS in 2003-04 FY, gifts to LCC stopped being reflected in UK's Private Giving statistics.

# GRANT and CONTRACT AWARDS (In Millions)

## 2006-2007

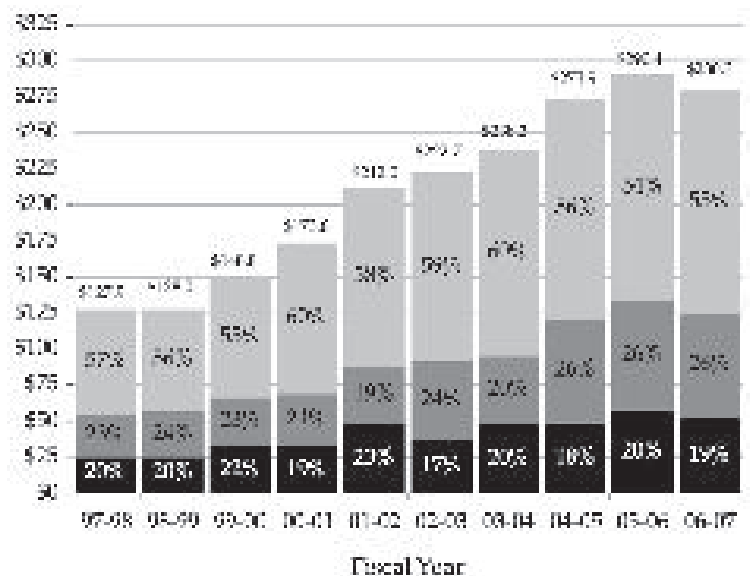
### By Category of Support

Instruction	\$ 14.0
Research	195.2
Public Service	69.1
Other	2.0
<b>Total</b>	<b>\$ 280.3</b>

### By Source

■ Federal	55%
■ State	26%
■ Business, Industry, Other	19%

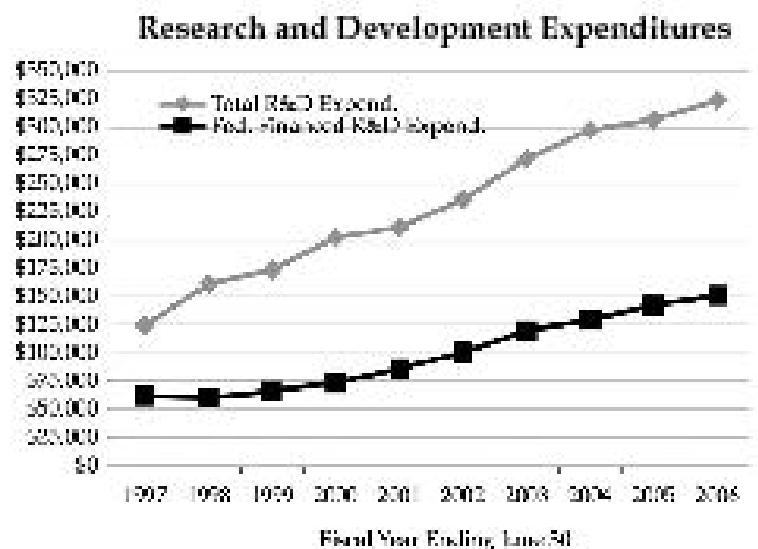
Note: Beginning in 1998-99, Grant and Contract Awards no longer includes the Community College System, except LCC. With the transfer of LCC to the KCTCS in 2003-04 FY, awards to LCC stopped being reflected in UK's Grant and Contract Awards statistics.



## RESEARCH and DEVELOPMENT (In Thousands)

Fiscal Year	Total R&D Expenditures*	Federally Financed R&D Expenditures*
2006	\$ 323,958	\$ 151,238
2005	306,653	142,794
2004	297,610	129,887
2003	272,062	120,003
2002	236,275	100,426
2001	211,721	86,239
2000	202,392	73,858
1999	174,034	66,184
1998	161,346	60,760
1997	124,804	62,128

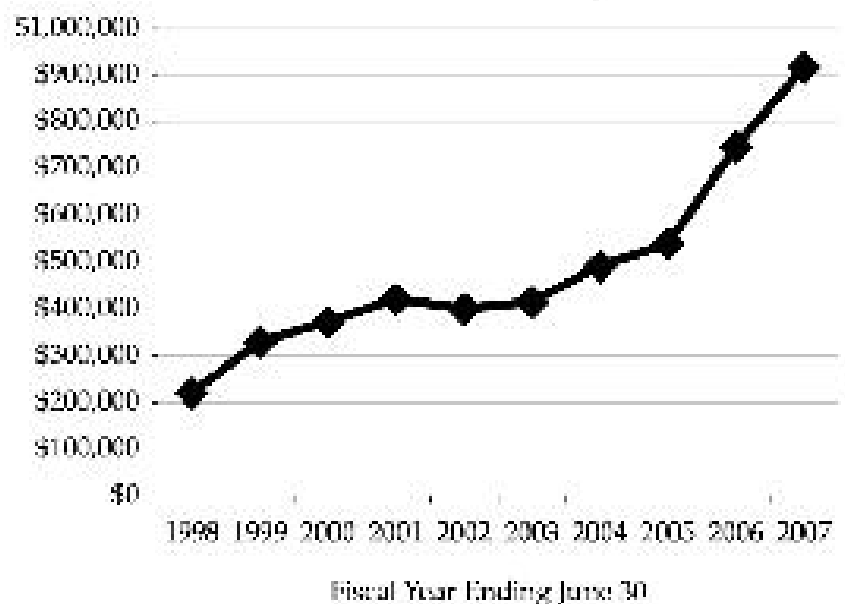
\*As reported to the National Science Foundation for science and engineering disciplines.



# UNIVERSITY ENDOWMENT (In Thousands)

Market Value of University Endowment

Fiscal Year	Market Value
2007	\$ 916,590
2006	746,114
2005	538,384
2004	491,098
2003	414,328
2002	399,030
2001	420,838
2000	371,373
1999	329,543
1998	219,740



Note: In 2006, the Chandler Medical Center University Hospital Quasi-Endowment Fund for \$150 million was established, accounting for the large increase over the 2005 total.



## NEW and RENOVATED FACILITIES

<b>In Construction/Renovation</b>	<b>Scope</b>	<b>Funding Source</b>	<b>Anticipated On-line Date</b>
Patient Care Facility	\$450,000,000	Agency	Fall 2010
Biological Pharmaceutical Complex Building	135,292,000	State	Winter 2009
Patient Care Facility Parking Garage	32,000,000	Agency	Winter 2007
Student Health Facility	24,000,000	Agency	Spring 2008
Renovate / Expand Boone Faculty Center	6,200,000	Private / Agency	Spring 2008
Renovate Chem-Physics Building	5,000,000	Agency	Summer 2008
Renovate Thomas Hunt Morgan Biological Science Building	3,188,000	Agency	Summer 2008
Renovate ML King Library	2,830,000	Agency	Summer 2008
Renovate Hospital Nursing Unit	2,000,000	Agency	Spring 2008
Renovate Central Vivarium	1,500,000	Agency	Summer 2008
Fit-Up Education Space in Health Sciences Building	1,000,000	Agency	Summer 2008
<b>In Planning and Design</b>			
Gatton Building Complex	\$100,000,000	State / Private	Fall 2011
Law School Building	83,300,000	State / Private	Fall 2012
Expand & Upgrade Livestock Disease Diagnostic Lab	8,500,000	State	Summer 2010
Equine Isolation Facility	1,100,000	Agency	Spring 2008

# LAND and SPACE\*

2006-2007

	<u>Main Campus</u>	<u>Off Campus**</u>	<u>Total</u>
Acreage***	792.8	24,121	24,914
Assignable Square Footage in Buildings***			
Classroom	213,703	32,547	246,250
Laboratory	1,149,135	172,136	1,321,271
Office	1,597,447	465,818	2,063,265
Study	409,223	6,041	415,264
Special	715,004	510,540	1,225,544
General	702,257	144,116	846,373
Support	2,162,046	392,761	2,554,807
Health Care	462,340	42,861	505,201
Residential	1,279,042	182,455	1,461,497
Unclassified	84,413	157,915	242,328
<b>Total</b>	<b>8,774,610</b>	<b>2,107,190</b>	<b>10,881,800</b>

\* Excludes space provided at no cost; includes leased space

\*\* Includes research farms, Robinson Forest, substations, 4-H Camps, and Adena Park

\*\*\* Source: Fall 2006 Physical Facilities and Land Inventory

## GENERAL EQUIPMENT INVENTORIES

(In Millions)

	Inventory 6/30/06*	Inventory 6/30/07*
<b>General</b>		
Instruction	\$ 44.6	\$26.7
Research	113.1	131.0
Public Service	17.0	18.3
Academic Support	21.2	18.9
Student Services	3.3	2.4
Institutional Support	23.0	21.6
Op & Mgt of Plant	2.9	3.0
Multifunction	17.2	6.9
<b>Subtotal</b>	<b>\$ 242.3</b>	<b>228.9</b>
<b>Auxiliaries</b>	<b>11.1</b>	<b>17.1</b>
<b>Hospital</b>	<b>120.6</b>	<b>131.7</b>
<b>Other</b>	<b>10.3</b>	<b>20.1</b>
<b>Total</b>	<b>\$ 384.2</b>	<b>397.8</b>

Note 1: Some numbers do not total properly due to rounding.

Note 2: An "unassigned" equipment inventory category (\$13.0M for 6/30/06 and \$21.2M for 6/30/07) is not included in the "Total" as the annual inventory for the fiscal year ended 6/30/07 was not completed at the time of publishing. The annual inventory will be completed January 2008 and will reflect the assignment of new equipment currently categorized as "unassigned."

# LIBRARY COLLECTIONS

2006-2007

Volumes Held	3,537,710
Current Periodical Titles	31,897
Microforms	6,433,748
Audio-visual Materials	92,560

The Libraries' collections also include over 330 licensed networked electronic databases, approximately 35,000 electronic journals and a large collection of electronic books accessible in the University's 15 libraries and also available to faculty and students off campus via a proxy server. In addition, the collections include: 260,702 maps; over 200 current state, national and international newspapers; over 6,200 Oral History program interviews; the University Archives and Records Program; the Wendell H. Ford Public Policy Research Center; the Audio-Visual Archives; the Bert T. Combs Appalachian Collection; the Public Policy Archives; the Rare Book Collection which includes the W. Hugh Peal Collection of 19th century English and related literature; and the Preservation Reformatting Center. The Center for Digital Programs creates digital content for the Kentuckiana Digital Library including electronic texts, digitized photographs, images and archival finding aids. The Library is a regional depository for U.S. government publications and is also a depository for European Union and Canadian publications, British Parliamentary Papers, Kentucky government publications, and technical reports from federal agencies, all selectively collected.



# BENCHMARK INSTITUTIONS

Michigan State University

North Carolina State University

Ohio State University

Pennsylvania State University

Purdue University

Texas A&M University

University of Arizona

University of California - Los Angeles

University of Florida

University of Georgia

University of Illinois - Urbana-Champaign

University of Iowa

University of Maryland - College Park

University of Michigan - Ann Arbor

University of Minnesota - Twin Cities

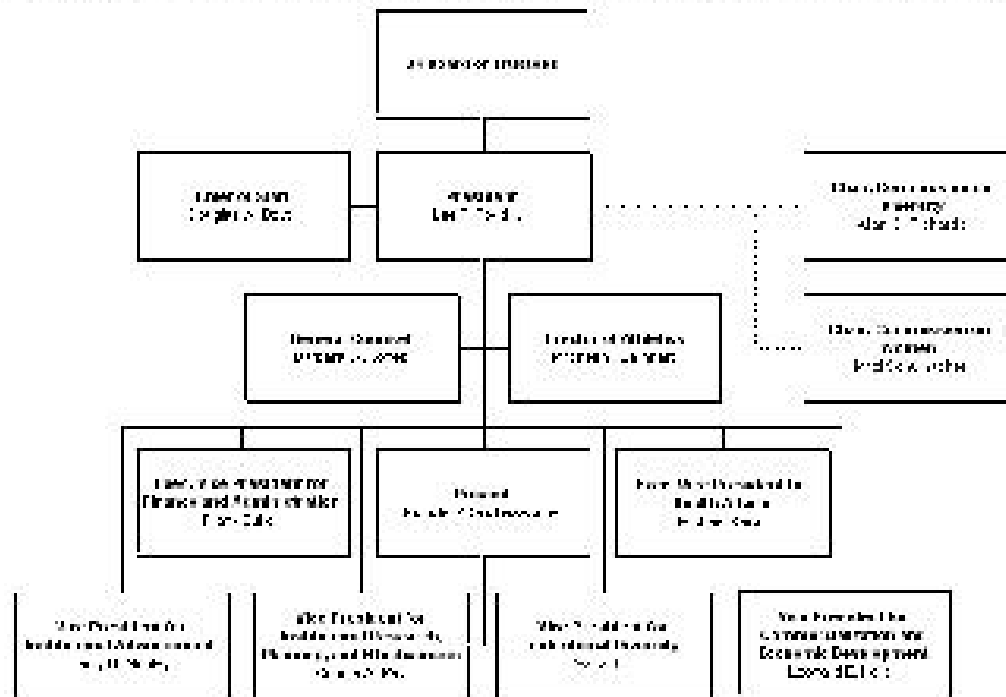
University of North Carolina - Chapel Hill

University of Virginia

University of Washington

University of Wisconsin - Madison

# ADMINISTRATIVE ORGANIZATION



# BOARD of TRUSTEES

<b>Mira S. Ball</b>	Lexington	(2010)	<b>Phillip R. Patton</b>	Glasgow	(2009)
<b>Stephen P. Branscum</b>	Russell Springs	(2010)	<b>Nick Phelps</b>	Student Member	(2008)
<b>Penelope Brown</b>	Corbin	(2011)	<b>Erwin Roberts</b>	Louisville	(2012)
<b>Dermoniti Dawson</b>	Nicholasville	(2011)	<b>Charles R. Sachatello</b>	Lexington	(2013)
<b>Jeffrey Dembo</b>	Faculty Member	(2008)	<b>C. Frank Shoop</b>	Lexington	(2008)
<b>Ann Brand Haney</b>	Nancy	(2010)	<b>Myra Leigh Tobin</b>	Alumni Member	(2008)
<b>James F. Hardyman</b>	Lexington	(2009)	<b>JoElla Y. Wickliffe</b>	Harrodsburg	(2009)
<b>Pamela R. May</b>	Pikeville	(2013)	<b>Billy B. Wilcoxson</b>	Lexington	(2008)
<b>Billy Joe Miles</b>	Owensboro	(2013)	<b>Russ Williams</b>	Staff Member	(2010)
<b>Sandy Patterson</b>	Alumni Member	(2012)	<b>Ernest Yanarella</b>	Faculty Member	(2010)

# ADMINISTRATIVE HISTORY

1863	Agricultural and Mechanical College (A&M) established as part of Kentucky University	1941	Herman L. Donnan became President	1976	College of Communications and College of Fine Arts established
1869	James K. Patterson became President of A&M	1947	College of Pharmacy moved to UK	1982	University reorganized with a Central Administration and three sectors headed by Chancellors (Lexington Campus, Medical Center, and Community College System)
1878	A&M separated from Kentucky University	1956	Frank G. Dickey became President	1984	LTI became Lexington Community College
1882	A&M moved to current location in Lexington	1957	Ashland Extension Center established	1987	David P. Russell became President
1888	Ag. Experiment Station opened	1960	Medical Center established; College of Medicine admitted first class; College of Nursing admitted first class; Henderson Extension Center and Southeast Extension Center established	1990	Charles T. Wethington, Jr. became President
1889	College of Agriculture established	1962	College of Dentistry admitted first class; University Hospital opened	1993	College of Communications and Information Studies established
1908	College of Arts and Sciences and College of Law established; A&M name changed to "State University, Lexington, Kentucky"	1963	John W. Oswald became President	1998	William T. Young Library opened; All Community Colleges (except LCC) transferred to the KCTCS
1909	University Library established	1964	Community College System established under UK; College of Architecture established	2001	Lee T. Todd, Jr. became President; University reorganized with a Provost model
1911	Henry S. Barber became President of State University	1965	Lexington Technical Institute (LTI) established	2002	College of Design established
1916	State University renamed University of Kentucky	1966	College of Allied Health Professions established	2004	LCC transferred to the KCTCS; College of Public Health established
1917	Frank L. McVey became President of UK; Graduate School established	1967	College of Home Economics established		
1918	College of Engineering established	1968	Albert D. Kirwan became President		
1923	College of Education established	1969	College of Social Work established; Otis A. Singletary became President		
1928	College of Business and Economics established	1970	College of Library and Information Science established		



# VALUES

The values of the University guide its decisions and the behavior of its community. Its core values are:

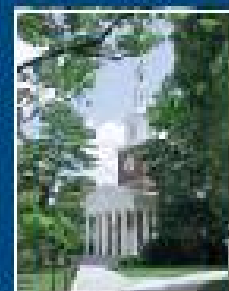
- *Integrity*
- *Academic excellence and academic freedom*
- *Mutual respect and human dignity*
- *Embracing diversity*
- *Personal and institutional responsibility and accountability*
- *Shared governance*
- *A sense of community*
- *Sensitivity to work-life concerns*
- *Civic responsibility*
- *Service to society*

-- Adopted by the Board of Trustees, October 10, 2007

## UK's Top 20 Business Plan

By 2020, UK will...

- Increase enrollment by 7,000 to 34,000
- Increase the graduation rate to more than 72 percent
- Increase bachelor's degrees awarded from 3,300 to 6,350
- Increase doctorates awarded from 276 to 465
- Increase the number of faculty by 625 to more than 2,500
- Increase research expenditures by \$470 million to \$768 million
- Increase engagement and service efforts throughout the state to improve agriculture, health care, economic development and communities.



**UK**  
UNIVERSITY  
OF KENTUCKY

An Equal Opportunity University

Published by the UK Office of  
Institutional Research