

copy 2
KENTUCKY
VS
ALABAMA



**CRIMSON
TIDE**

**NOVEMBER 1
HOME COMING**

OFFICIAL PROGRAM

PRICE 25¢

GREETINGS

*to the Athletic Council and
Football Team*

Student activities, particularly those fostered and promoted by the Athletic Council of the University of Kentucky, are doing much to build up and advertise the State of Kentucky, Lexington and the Blue Grass district.

To the football team especially goes out my best wishes for an outstanding season, ideal weather conditions, splendid attendance, and a 100 per cent winning schedule.

*From an admirer and
well-wisher*

WHEN

University of Kentucky

Need Athletic Equipment their first thought is The Sutcliffe Co. So it is with thousands of other colleges and schools throughout the U. S. A.

We offer wholesale prices to schools, and the very best and up-to-date equipment, and ship orders the same day we receive them

SUPERINTENDENTS, PRINCIPALS, COACHES, ATHLETIC DIRECTORS WRITE FOR OUR WHOLESALE ATHLETIC GOODS CATALOG

THE SUTCLIFFE CO.

Incorporated

Louisville, Ky.



Down
the
Line

Of

Spalding Equipment

You'll find authentic outfits for practically every sport from ping pong to football.

A. G. Spalding & Bros.

119 East 5th Street

CINCINNATI, OHIO

ON TO

Knoxville

Special Train via Southern Railway

Account

Thanksgiving Day Game with Tennessee Special Train will leave Lexington night of Wednesday, November 26, returning reach Lexington early Friday morning.

Special Reduced Fare

Make Pullman Reservations Early

**SOUTHERN RAILWAY
SYSTEM**

City Ticket Office, 112 East Main Street

Phone Ashland 49

H. D. Lyons, T.P.A. W. R. Clinkinbeard, C.T.A.

THE O'SHEA FOOTBALL JERSEY

FOOTBALL JERSEYS

BASKETBALL SHIRTS

HONOR SWEATERS

ATHLETIC HOSE

O'SHEA KNITTING MILLS

2414 N. Sacramento Ave.

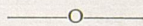
CHICAGO, ILL.

CROPPER'S LAUNDRY

Incorporated

146 North Upper St.

Lexington, Kentucky



Equipped to Satisfy the Customer on
Any Class of Service, Either
Laundry or Dry Cleaning

ENJOY

.....

Dixie ICE CREAM
TRADE-MARK REG.

There's a DIXIE Dealer
Near You

DIXIE ICE CREAM CO.
LEXINGTON WINCHESTER

The Phoenix Hotel
Lexington, Kentucky

Presents its Compliments

to the

UNIVERSITY OF KENTUCKY
FOOTBALL TEAM

With cordial good wishes for triumphant
attainment of the 1930
championship

ROY CARRUTHERS
President

THOMAS P. CAGWIN
General Manager

Goldsmith
Athletic
Equipment

Compliments of

The Smith-Watkins Company
Incorporated

Rah - Rah - Rah
KENTUCKY!

Hotel
Lafayette

Lexington's newest and most modern
hotel. Delicious Table d' Hote Dinner
served from 6 to 9, \$1.50. Meeting
place for Kentucky Alumni.

LEN SHOUSE, Jr., Manager

GO ON THE
"WILDCAT SPECIAL"

To

KNOXVILLE

Via



To

Thanksgiving Day Game

With

University of Tennessee

\$7.97 Round Trip

Pullman Drawing Rooms and Compartment
Sleepers, Free Reclining Chair Cars, Coaches.
Train will leave Union Station Wednesday
night, arriving Knoxville early Thursday, Re-
turning midnight. Call Ash 6688.
F. B. CARR, Gen. Agt. W. H. HARRISON, T.P.A.

Welcome

Home Grads

Come See Us

Phoenix Indoor Golf Course

"Best Course in the South"

Located
at
**PHOENIX
HOTEL**

Are you
on
**BUMPER
BOARD?**

STRAND

—TODAY—

**"The
Office
Wife"**

DOROTHY
MACKAILL

LEWIS STONE

—SUNDAY—

**"Maby It's
Love"**

JOE E. BROWN

and the

ALL AMERICAN
FOOTBALL TEAM

BEN ALI

—TODAY—

"Lilliom"

WITH

CHARLES
FARRELL

also

Rockne Football
Pictures

—SUNDAY—

WARNER
BAXTER

in

"Renegades"

also

Rockne Football
Series

Welcome, Grads

Make your home-coming
complete by coming around
and seeing us

ALL KINDS OF PRINTING, OF-
FICE SUPPLIES, SCHOOL SUPPLIES

Fountain Pens and Pencils

Transylvania Printing Co.
(Incorporated)

N. Upper St.

Near Fayette Bank



FRANK LeROND McVEY
PRESIDENT OF UNIVERSITY OF KENTUCKY



S. A. "DADDY" BOLES

Graduate Manager, Intercollegiate Athletics
University of Kentucky

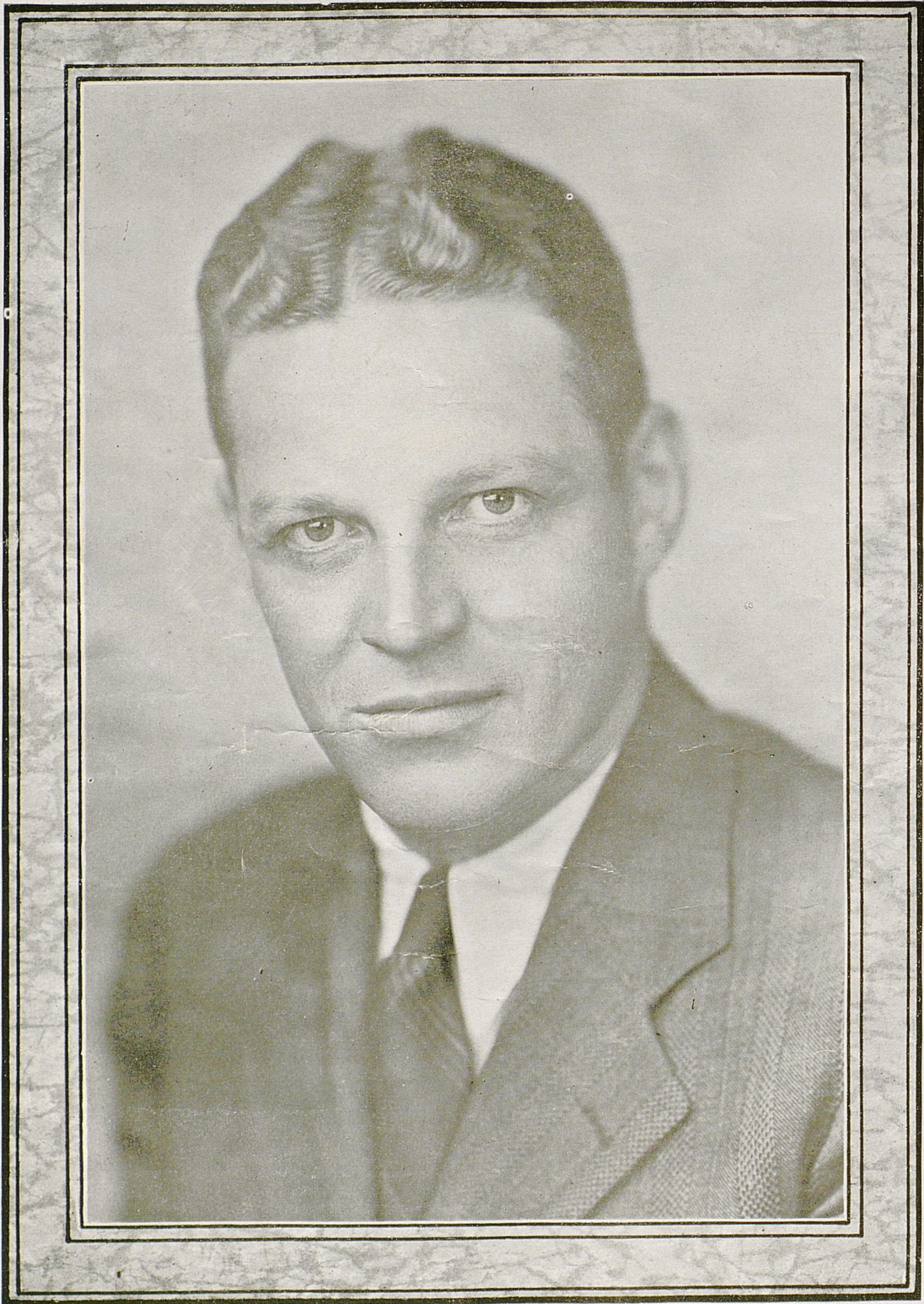
JUDGE RICHARD C. STOLL

Alumnus University of Kentucky, member of
Board of Trustees and Chairman of the Execu-
tive Committee, and for whom Stoll Field
is named





L. G. FORQUER, KENTUCKY'S CAPTAIN



HARRY G. GAMAGE
HEAD FOOTBALL COACH, UNIVERSITY OF KENTUCKY

Photo by Starman Studio

Sidelights on Football

By NIEL PLUMMER, '28
Director of Sports Publicity University of Kentucky

Seven long years, seven long trips to Alabama, seven grinding defeats. Today—if we are to see something the seven years have not viewed—a glorious battle must be waged by seven young men, those seven Wildcats in the Kentucky line.

Rolling into Lexington with a line reported, on good authority, to be the best developed at the University of Alabama in years, the Crimson forward wall threatens to be a barrier which will shut Kentucky's Big Blue away from the goal line and victory. It has humiliated two great teams so far this season, Tennessee and Vanderbilt, and today this great forward wall will surge against the best Kentucky can offer.

So when you see the Crimson and the Blue in action this afternoon, give one big cheer for that Blue line—the under-dogs. Their task is great, but they will fight, earnestly, bitterly. No more could be asked of them.

Alabama and Kentucky have met on the gridiron nine times. Eight times the Tide has come out victorious. One year has seen the Wildcats rise up to unexpected heights and humiliate the Alabama team, which at that time was highly regarded for national honors. The year was 1922. The score was 6 to 0. The place was Lexington. The occasion was Alabama's last visit to Kentucky.

We can't wish Alabama bad luck, but we can hope for good luck for Kentucky. Come on history—do your "stuff". Put on that old "history repeats herself act" today.

Looking back over the years, the scores for the Alabama-Kentucky games read as follows:

1917 Alabama 28; Kentucky 0.	1926 Alabama 14; Kentucky 0.
1922 Kentucky 6; Alabama 0	1927 Alabama 21; Kentucky 6.
1923 Alabama 16; Kentucky 8.	1928 Alabama 14; Kentucky 0.
1924 Alabama 42; Kentucky 7.	1929 Alabama 24; Kentucky 13.
1925 Alabama 31; Kentucky 0.	

Turning first to that game last year, we might relate the gallant fight staged by a crippled Wildcat team against a powerful, inspired team. . . a team that crashed and smashed its way to victory in the final quarter in the person of Tony Holm. This is no alibi attempt, but it is fact that the Wildcats went out in front early in the game, 13 to 12, and they stayed there until only minutes of the game remained.

A touchdown put the powerful Crimson out in front, and Kentucky took the next kick-off. In a desperate attempt to score, a pass was thrown while the Blue was deep in its own territory. The pass was intercepted and a few plays later, Alabama sewed up the game with another touchdown.

Looking still further through the years we notice the 1927 score—21 to 6. That six is the result of some fast thinking on the part of Will Ed Covington, who led Kentucky's team last year. Will Ed, playing end way back there in 1927, scooped up a fumble and ran it back to near the goal line. A score followed.

Then that 42 to 7 score in 1924. Charles "Turkey" Hughes, now coach at Eastern State Normal at Richmond, Ky., is responsible for the seven.

Alabama was marching goalward with that powerful drive that always characterizes the Tide. Five yards, four yards, two yards they marched . . . and they took to the air as the Wildcats braced themselves at the goal line. The ball floated over the line toward a waiting Crimson back but just as it settled down, "Turkey" Hughes flashed into the scene, took the ball out of the air and was away. One hundred and one yards he legged it down the field and Kentucky had six points, and the honor of claiming one of the longest runs for that year.

And that score of Kentucky 6; Alabama 0. The battle already has been discussed here but it will bear repeating. The game was a great upset, it occurred in a sea of mud on the practice field to the west of this gridiron, which was the regular playing field in 1922. We love to mull over that score. It sounds good.

There's not much else to say. This game will be carried by the National Broadcasting Company network to all parts of the South. The radio booth is located in the west end of the press box. In addition, microphones have been located in front of the cheering sections and in front of the Kentucky and Alabama bands. Any one microphone can be cut in as needed.

Kentucky goes to Durham N. C., to meet Duke next week, and that's about all we know. And we'd like to confess that this is being written three days before this Alabama game, and we have only a slight idea what we are writing. That's how most all of us feel about this game.

Those Terrible Alabama Tackles



FRED SINGTON
Weight 215

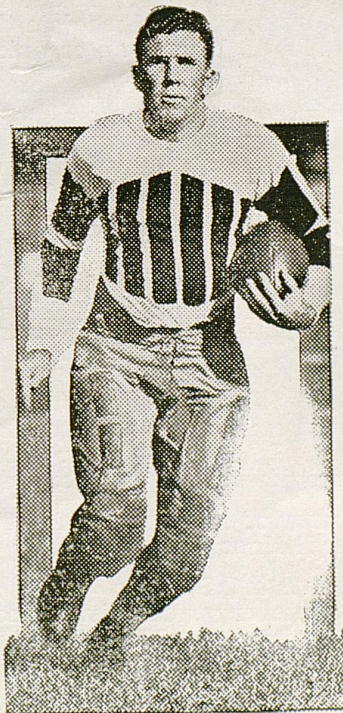
CHARLES CLEMENTS
Weight 215

WHERE THEY PLAY NEXT WEEK

Kentucky vs. Duke
Alabama vs. Florida
Auburn vs. Tulane
Clemson vs. V. M. I.
Georgia vs. New York U.
Georgia Tech vs. Vanderbilt
L. S. U. vs. Ole Miss
Maryland vs. W. and L.
Miss. A. M. vs. Henderson College
North Carolina vs. N. C. S.
Sewanee vs. Chattanooga
South Carolina vs. Furman
Tennessee vs. Carson Newman
Virginia vs. V. P. I.
Carnegie Tech vs. Pittsburg
Centre vs. Wabash
Michigan vs. Harvard

Northwestern vs. Indiana
Iowa State vs. Missouri
Navy vs. Ohio State
Lehigh vs. Princeton
St. Xavier (Cincy) vs. U. of Dayton
Purdue vs. Chicago
Cincinnati U. vs. Marietta
Marquette vs. Iowa
Nebraska vs. Kansas
DePaul vs. Louisville
South Dakota vs. Minnesota
Pennsylvania vs. Notre Dame
South Dakota State vs. Wisconsin
Illinois vs. Army
Kansas State vs. West Virginia
Alfred vs. Yale

ALABAMA PLAYERS



THE UNIVERSITY OF ALABAMA

The University of Alabama was called into existence by the generosity of the congress of the United States, and fostered by the founders of the state.

It was in 1819 that the congress of the United States donated 46,080 acres of land within the state for the endowment of a seminary of learning. The general assembly of Alabama followed this action by passing an act in 1820 establishing a seminary of learning "to be denominated the University of Alabama."

The organization of the university was pushed and the board of trustees held their first meeting at the town of Tuscaloosa on April 6, 1822. On December 29, 1827, the general assembly, by a joint ballot of both houses, selected Tuscaloosa as the seat of the University. The site whereon to erect the buildings, one mile and a quarter east of the courthouse in Tuscaloosa, was selected by the trustees on March 22, 1828. On April 18, 1831, the university was opened for the admission of students.

The school grew but disaster befell it during the war between the states when, on April 4, 1865, a body of federal cavalry set fire to and completely destroyed all the public buildings of the university, except the astronomical observatory. The erection of new buildings was begun in January, 1867, and collegiate instruction was resumed in April, 1869.

Through the efforts of Senator John T. Morgan, a second donation of public lands within the state, to the extent of 72 sections or 46,080 acres, was made to the university by Congress by an act of February 25, 1884, in restitution of the loss of buildings, library and scientific apparatus incurred in 1865.

On March 6, 1907, the legislature of Alabama increased the material equipment of the university by voting the sum of \$400,000 to be used as a fund for the erection of new buildings during the years 1907-10. In addition, it added to the maintenance fund. Under action of the legislature on the same date the Medical College of Alabama, established in 1859, and located in Mobile, became an organic department of the university and passed under the control of the board of trustees.

The legislature of 1911 appropriated \$100,000 for buildings and increased the maintenance fund. In 1919 the legislature appropriated \$115,000 for buildings and increased the annual support of the university, including the school of medicine, the summer school, and extension service, to \$190,500, including \$36,000 in interest on the original federal land grant. The state, in addition, appropriates \$10,000 annually to graduate medicine and \$25,000 to the school of mines.

The legislature of 1927 appropriated for the support and maintenance the additional sum of approximately one third of a million dollars annually, 25% of which must be used for medicine, research and extension. In addition it appropriated conditionally three fourths of a million for buildings, to be expended during the ensuing triennium.

The University also has an endowment fund which is being gradually increased out of the royalties arising from leases of coal lands. The income from the endowment is available for maintenance. In 1922 a popular subscription for buildings and equipment enabled the university to provide for the erection and equipment of four new buildings.

The University of Alabama is part of the public school system of the state of Alabama. It is administered through the following organizations:


- College of Arts and Sciences
- School of Metallurgy, Chemistry and Ceramics
- School of Commerce and Business Administration
- College of Education
- College of Engineering

School of Law
School of Medicine
Summer School for Teachers
Extension Division
Graduate School
School of Mines


The university grounds, adjacent to the city of Tuscaloosa comprise nearly 300 acres, lying north and south of University avenue. Near the middle of this tract is the campus proper, consisting of about 40 acres and here are the university buildings, the fraternity houses and the homes of the president and faculty.

Denny Field, named after George H. Denny, president of the University of Alabama and comprising eight acres of level land, lies immediately to the rear of the gymnasium. Here several football fields, baseball diamonds and a standard track are maintained for use of those taking part in athletics.

Radio facilities have been provided by the university and carefully arranged programs are broadcast. The university has entered into an agreement with Alabama Polytechnic Institute and Alabama College, whereby station WAPI is now owned jointly by these three institutions and is operated by these schools in cooperation with the city of Birmingham. The extension division of the university is in charge of the university programs.



Starts Today!

 **Kentucky**
Home of Paramount Pictures

Mat. 10c - 35c till 6 p. m.
Night 10c - 50c

YEA WILDCATS!
Turn the Crimson Tide
BLUE!

**CLARA
BOW**
in
**Her Wedding
Night"**

Too many husbands is the trouble—there are three—and 300 laughs in this zippy marriage mixup!

Neglected in a Negligee—and on her wedding night!

Ralph Forbes
Charlie Ruggles
Skeets Gallagher

SOME IMPORTANT RULES

LENGTH OF GAME: "The length of the game shall be 60 minutes, divided into four periods of 15 minutes each, exclusive of time taken out, although it may be of shorter duration by mutual agreement."

SUMMARY OF THE MORE IMPORTANT PENALTIES

- | | |
|---|--|
| 1. Offside, both sides..... | No penalty |
| 2. Offside..... | 5 yards |
| 3. Holding, etc., by defensive side | 5 yards |
| 4. Second or third incompleting forward pass during same series of downs..... | 5 yards |
| 5. Crawling..... | 5 yards |
| 6. Taking out time more than 3 times during a half, etc..... | 5 yards |
| 7. Running into kicker..... | 5 yards |
| 8. Substitute failing to report... | 5 yards |
| 9. Unreasonable delay in putting ball in play..... | 5 yards |
| 10. Starting forward before ball | 5 yards |
| 11. Fair catch, taking more than two steps after catch..... | 5 yards |
| 12. Attempt to draw opponents offside..... | 5 yards |
| 13. Interference with opponents before ball is put in play..... | 5 yards |
| 14. Feint to snap ball..... | 5 yards |
| 15. Illegal tackling..... | 5 yards |
| 16. Neutral Zone, encoachment on | 5 yards |
| 17. Player out of bounds..... | 5 yards |
| 18. Unfair play..... | 5 yards |
| 19. Illegal use of hands and arms by offense..... | 15 yards |
| 20. Interference with fair catch, etc..... | 15 yards |
| 21. Roughing kicker..... | 15 yards |
| SCORING: | |
| Touchdown..... | 6 points |
| Successful "try" after touchdown..... | 1 point |
| Safety by opponents..... | 2 points |
| 22. Substitute communicating before first play..... | 15 yards |
| 23. Unnecessary roughness..... | 15 yards |
| 24. Interference on forward pass by defense..... | 15 yards |
| 25. Pushing, pulling, interlocked interference, etc..... | 15 yards |
| 26. Forward passing, intentional throwing to ground..... | 15 yards |
| 27. Leaving field during one minute intermission..... | 15 yards |
| 28. Man going on field without permission..... | 15 yards |
| 29. More than one man going on field..... | 15 yards |
| 30. Coaching from sidelines..... | 15 yards |
| 31. Hurdling..... | 15 yards |
| 32. Tripping..... | 15 yards |
| 33. Unsportsmanlike conduct..... | 15 yards |
| 34. Clipping from behind..... | 25 yards |
| 35. Piling up..... | 15 yards |
| 36. Kicking loose ball..... | loss of ball |
| 37. Foul by defense on try for point..... | point awarded |
| 38. Illegal return to game | Half distance to goal and disqualification |

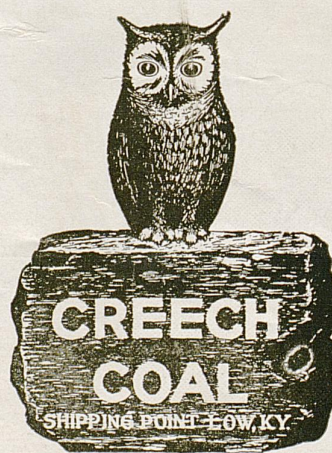
ALLEN-HARPER

Electrical Engineering Corporation

Wiring and Engineering Work
A Specialty

**In Kentucky, Alabama, and
Throughout the Southland**

There is a Creech dealer near you



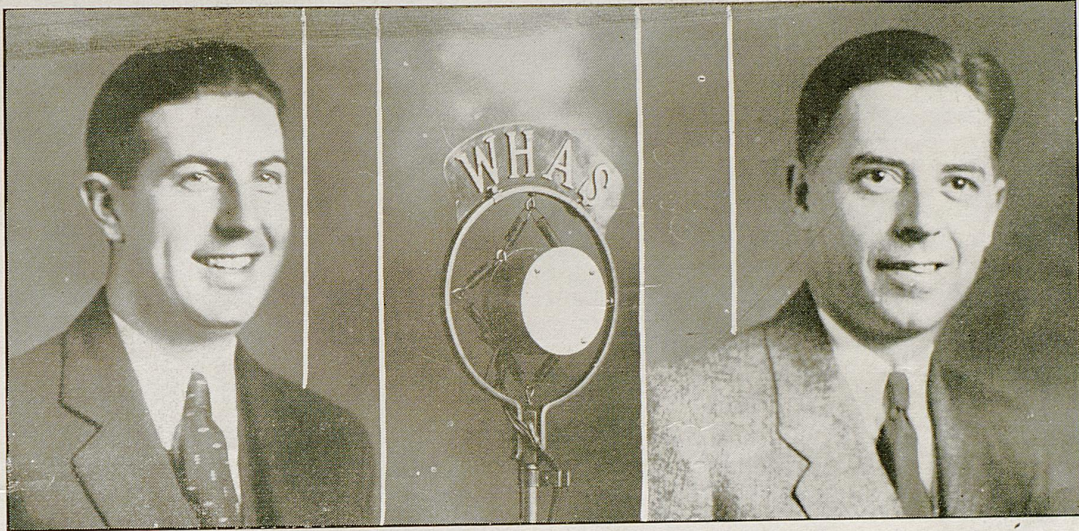
The Standard of Comparison for 15 years

TRADE MARK REGISTERED
"A WORD TO THE WISE
IS SUFFICIENT"

RANDALL FUEL CO.
SALES AGENTS

ATLANTA, GA. CINCINNATI, O.

RADIO



DON McNEIL
Announcer WHAS

JOE EATON
Chief Announcer WHAS

The National Broadcasting Company has made possible the radiocasting of the Kentucky-Alabama game today, through a network of southern stations, with WHAS of the Courier-Journal and Times at Louisville, as the keystation for the broadcast.

Herewith are pictured the members of the staff who will function at today's game, and who will carry play by play the message of this southern football classic to Dixie fans who are unable to attend.

The University Extension studios of station WHAS of the Courier-Journal and Times, have been radiocasting five-day-a-week programs since the opening of the University studios in April, 1929, with such cooperative success that WHAS not only increased the number of broadcasts from five days a week to six, beginning with October one, but have also radiocast a play by play account of the two Kentucky games previous to this one, and have completed arrangements for the announcing of the Kentucky-V. M. I. contest, Saturday, November 15.



TOM RILEY
Chief Announcer U. of K.



HELEN KING
Publicity Bureau
Assistant to Director



BROWNIE LEACH
Sports Writer
Lexington Leader

(Deacon Photo)



LOUIS HILLENMEYER
Alumni Representative
 ENOCH GREHAN
Faculty Representative

W. D. FUNKHOUSER, Chairman
Faculty Representative

JOHN STOLL
Alumni Representative
 E. A. BUREAU
Faculty Representative

Other members of the Council are: S. A. Boles, *Faculty Representative*; L. L. Haggin, *Resident of Fayette County*; Len Miller, *Student Representative*; Gayle Mohny, *Student Representative*.

CAL. HOSKINS
 Manager Kentucky Football Team

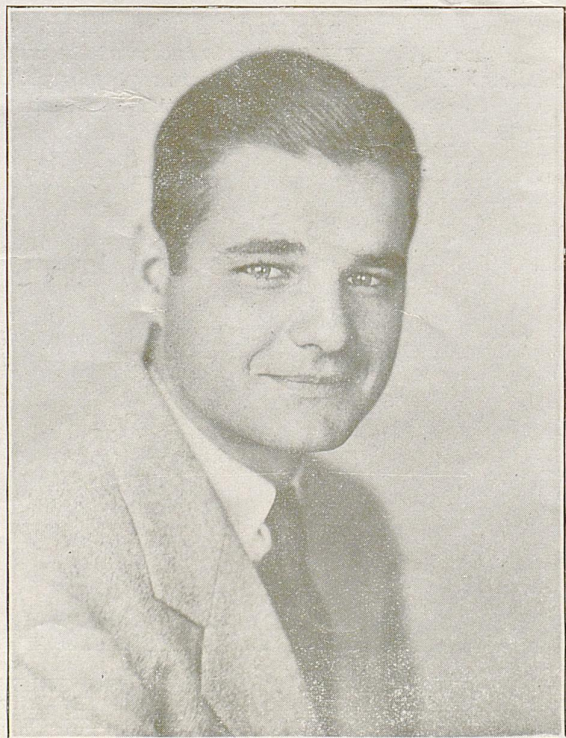


Photo by Starman Studio

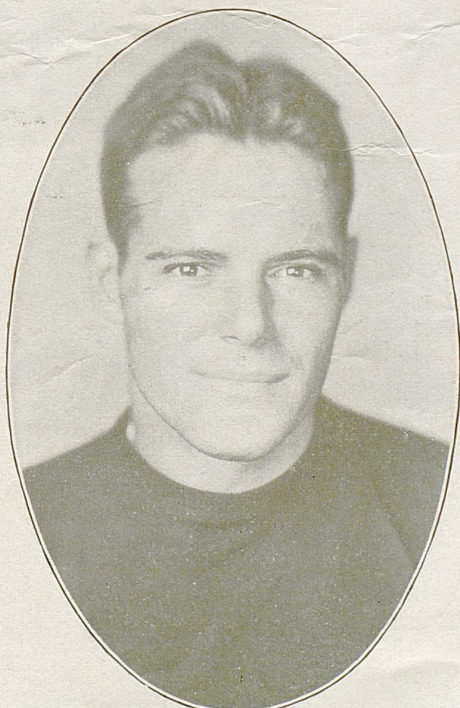
KENTUCKY PLAYERS



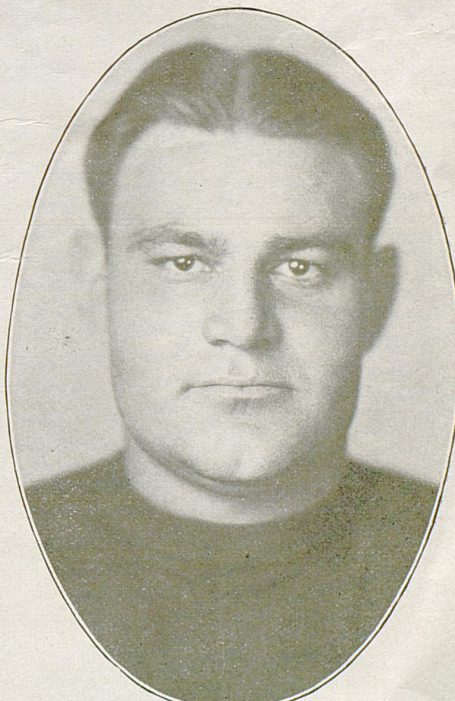
CAREY SPICER (48)
QUARTERBACK



HOWARD WILLIAMS (50)
CENTER



DICK RICHARDS (62)
FULLBACK



RALPH WRIGHT (52)
TACKLE

Photos by Starman Studios, Lexington and Palm Beach

ONE
*will always
stand*

THE KENTUCKY LINE-UP

CAVANA (49) WRIGHT (52) FORQUER (30) WILLIAMS (50)
Left End Left Tackle Left Guard Center

ROSE (54) KIPPING (38) ANDREWS (28)
Right Guard Right Tackle Right End

SPICER (48)
Quarterback

E. JOHNSON (99)
Left Half

KELLY (44)
Right Half

JACK PHIPPS (88) or
TOM PHIPPS, (66)
Fullback

Press of The Kentucky Kernel, Lexington



MILDER

and

CHESTERFIELD

NE

always
and out!

THE ALABAMA LINE-UP

MOORE (5) Left End	SINGTON (47) Left Tackle	HOWARD (33) Left Guard	EBERDT (46) Center
GODFREY (34) Right Guard	CLEMENT (48) Right Tackle	SMITH (23) Right End	
	CAMPBELL (54) Quarterback		
SUTHER (4) Left Half		McRIGHT (8) Right Half	
	CAIN (3) Fullback		



and **BETTER TASTE**

FIELD



*They
Satisfy*

THE KENTUCKY LINE-UP

Cavana (49) Left End	Wright (52) Left Tackle	Forquer (30) Left Guard	Williams (50) Center	Rose (54) Right Guard	Kipping (38) Right Tackle	Andrews (28) Right End
Spicer (48) Quarterback						
E. Johnson (99) Left Half				Kelly (44) Right Half		
Jack Phipps (88) or Tom Phipps (66) Fullback						

STATISTICS OF THE KENTUCKY SQUAD

No.	Player	Position	Year	Weight	Home Town
20.	Aldridge, Burton	Tackle	Soph	186	Benham
21	Foster, Malcolm	Back	Soph	165	Nicholasville
23	Bickel, Geo.	Back	Soph	160	Louisville
24	Clark, Wayne	Tackle	Soph	195	Mayfield
25	Darby, Darrell	End	Soph	155	Ashland
27	Gibson, Hoot	Center	Soph	176	Richmond
28	Andrews, Kenneth	End	Junior	182	Lexington
29	Baughman, Robt.	Guard	Senior	195	Stanford
30	Forquer, L. G. (Capt.)	Guard	Senior	203	New Castle
31	Bronston, Jake	End	Senior	170	Lexington
32	Evans, Eddie	Back	Soph	150	Louisville
33	Urbaniak, Cecil	Back	Junior	160	Fairmont, W. Va.
34	Gentile, Tony	Guard	Senior	175	Williamson, W. Va.
35	Goggin, Frank	Guard	Soph	160	Danville
36	Greathouse, Forrest	Tackle	Soph	170	Lexington
37	Humber, Bill	Guard	Soph	175	Henderson
38	Kipping, Bob	Tackle	Senior	186	Carrollton
39	Colker, Max	Center	Senior	165	Newport
40	Engle, Noel	Guard	Soph	160	Hamilton, Ohio
41	Luther, Bill	Center	Soph	169	Harlan
42	McGinnis, L.	Tackle	Senior	175	Lexington
44	Kelly, Shipwreck	Back	Junior	170	Springfield
45	McElroy, Otho	Fullback	Senior	197	Morganfield
46	Montgomery, Bob	End	Soph	163	Ashland
47	Seale, Frank	Guard	Soph	222	Big Stone Gap, Va.
48	Spicer, Carey	Back	Senior	167	Lexington
49	Cavana, James	End	Junior	181	Iowa Falls, Iowa
50	Williams, Howard	Center	Senior	211	Lexington
52	Wright, Babe	Tackle	Junior	210	Sturgis
53	Skinner, Geo.	End	Soph	164	Lexington
54	Rose, Conrad	Guard	Senior	187	Evansville, Ind.
55	Myer, Bo	Back	Junior	142	Louisville
56	Yates, George	End	Junior	187	Elizabethtown
58	Toth, Louis	Back	Senior	165	South Bend, Ind.
59	Johnson, Ollie	Guard	Senior	165	Sanwich, Ill.
60	Blevins, Ralph	End	Soph	164	Ashland
62	Richards, Dick	Back	Junior	173	Denver, Colo.
63	Wilder, Ed	Tackle	Soph	166	Corbin
64	Wilder, Newell	Center	Soph	177	Corbin
65	Galliard, Giz	Tackle	Soph	170	Lebanon
66	Phipps, Tom	Back	Junior	177	Ashland
67	Frye, Jas.	End	Soph	151	Louisville
68	Baker, Henry	Back	Junior	155	Providence
69	Tuttie, Chas.	Tackle	Soph	175	Berea
88	Phipps, Jack	Back	Junior	172	Ashland
99	Johnson, Ellis	Back	Soph	170	Ashland

OFFICIALS

Referee—Ducote, Auburn

Umpire—Arnold, Auburn

THE UNIVERSITY OF ALABAMA LINE-UP

Moore (5) Left End	Sington (47) Left Tackle	Howard (33) Left Guard	Eberdt (46) Center	Godfrey (34) Right Guard	Clement, C (48) Right Tackle	Smith (23) Right End
			Campbell (54) Quarterback			
	Suther (4) Left Half				McRight (8) Right Half	
			Cain (3) Fullback			

STATISTICS OF THE UNIVERSITY OF ALABAMA

No.	Player	Position	Year	Weight	Home Town
1	Russell Taylor	End	One	165	Tallassee, Ala.
2	Raymond Hanson	Fullback	One	176	Freeport, N. Y.
3	John Cain	Fullback	One	180	Montgomery, Ala.
4	John Suther	Halfback	Three	175	Tuscaloosa, Ala.
5	James Moore	End	Three	171	Anniston, Ala.
6	Edgar Dobbs	End	Two	181	Collinsville, Ala.
7	Leon Long	Halfback	Two	176	Haleyville, Ala.
8	Ralph McRight	Halfback	Three	181	Mt. Hope, Ala.
9	Dave Boykin	Fullback	Three	181	Parrish, Ala.
10	Ralph Tucker	Quarterback	One	175	Russellville, Ark.
12	Albert Elmore	End	Three	175	Reform, Ala.
20	Ellis Houston	Center	One	171	Bessemer, Ala.
21	Everett Sanford	Guard	One	180	Parrish, Ala.
23	Ben Smith	End	Two	195	Haleyville, Ala.
27	Autrey Dotherow	End	One	175	Brooksville, Ala.
28	Calvin Frey	Guard	One	191	Little Rock, Ark.
33	Frank Howard	Guard	Three	176	Mobile, Ala.
34	Newton Godfrey	Guard	One	191	Alexander City, Ala.
35	Troy Barker	Guard	One	185	Lineville, Ala.
36	J. B. Whitworth	Tackle	One	191	Blytheville, Ark.
37	James Hood	End	One	185	Collinsville, Ala.
38	Carney Laslie	Guard	One	191	Charlotte, N. C.
39	John Miller	Guard	Three	194	Round Mount'n, Ala.
40	Comer Sims	Tackle	One	191	Searight, Ala.
41	Joe Sharpe	Center	Two	174	Mobile, Ala.
42	Max Jackson	Tackle	One	190	Notasulga, Ala.
46	Jess Eberdt	Center	Three	191	Blytheville, Ark.
47	Fred Sington	Tackle	Three	215	Birmingham, Ala.
48	Charles Clement (C)	Tackle	Three	215	Rover, Ark.
53	Joe Causey	Halfback	One	161	Douglas, Ariz.
54	James Campbell	Quarterback	Three	165	Durant, Miss.
55	Billy Brown	Halfback	Two	160	Dothan, Ala.
56	Joseph Bellini	Halfback	One	145	New Haven, Conn.
57	Hillman Holley	Quarterback	One	157	Tuscaloosa, Ala.
60	H. B. Miller	Halfback	Two	155	Hazelhurst, Miss.

OFFICIALS

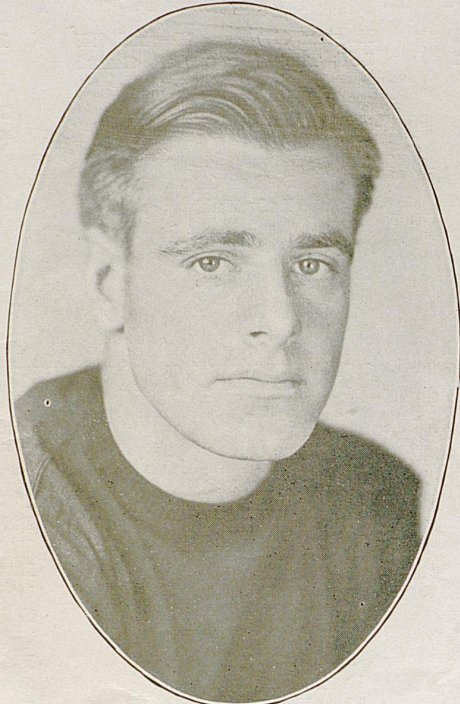
Head Linesman—Black, Davidson

Field Judge—Tolley, Sewanee

KENTUCKY PLAYERS



J. SIMMS KELLY (44)
HALFBACK



JACK PHIPPS (88)
FULLBACK



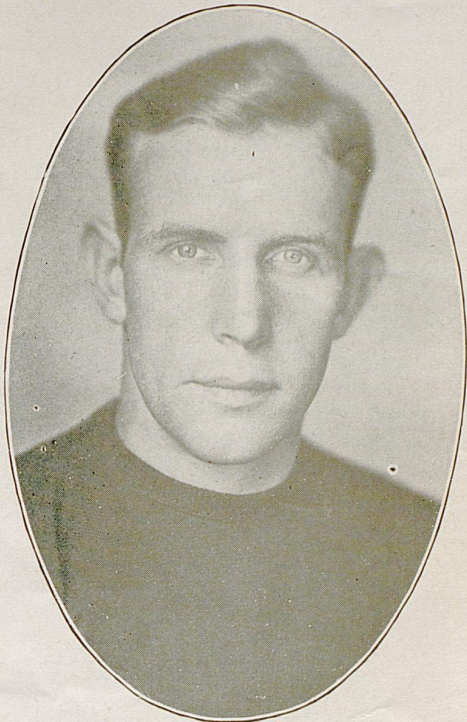
BO MEYER (55)
QUARTERBACK



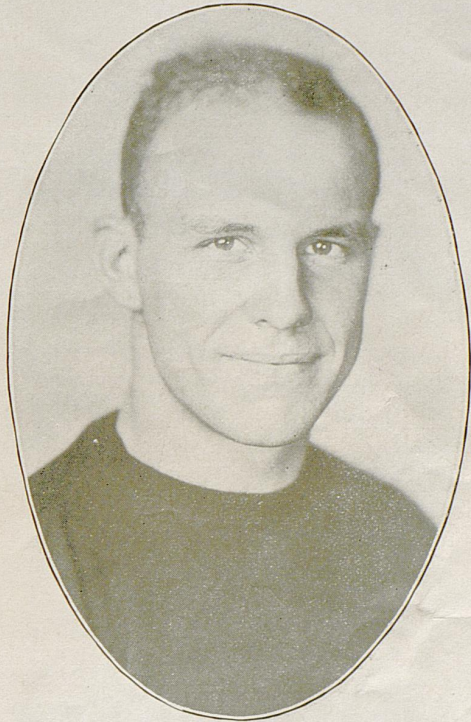
CONRAD ROSE (54)
GUARD

Photos by Starman Studios, Lexington and Palm Beach

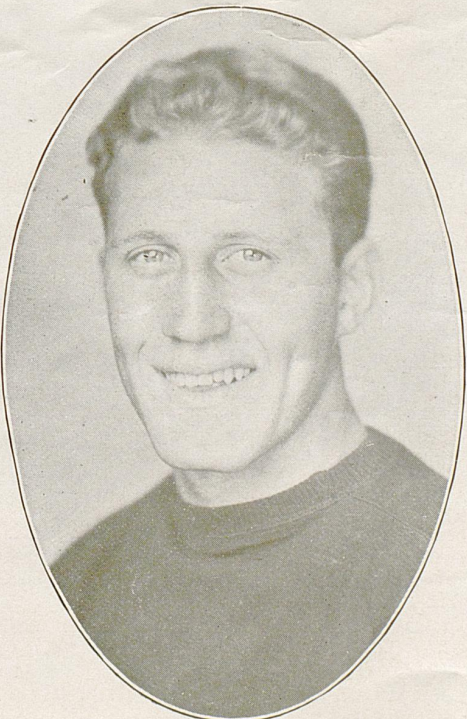
KENTUCKY PLAYERS



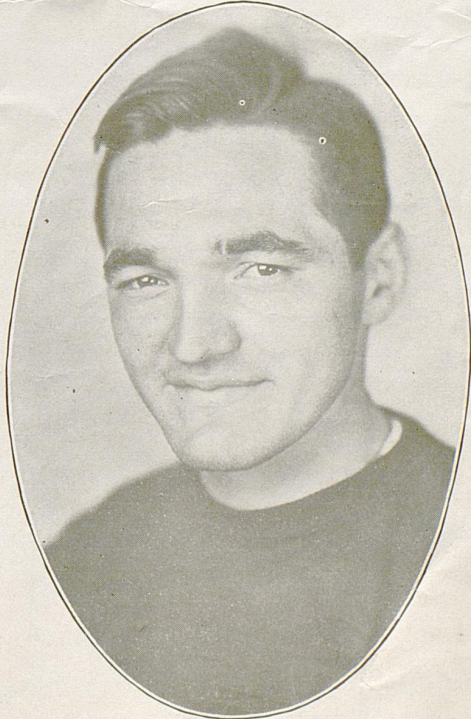
L. G. FORQUER, Captain (30)
GUARD



ROBERT KIPPING (38)
TACKLE



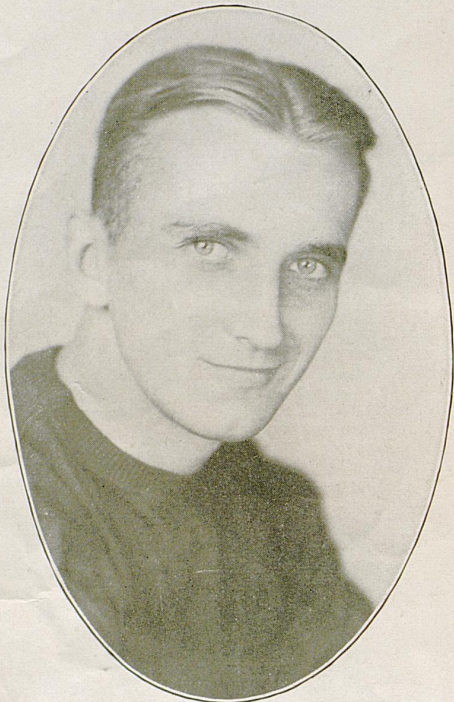
JAKE BRONSTON (31)
END



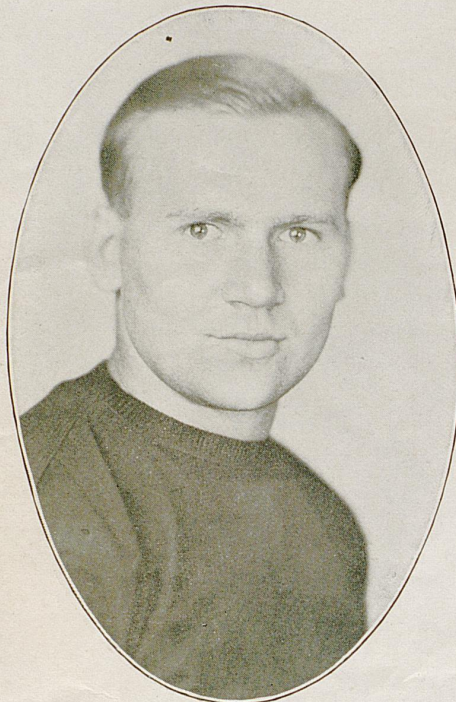
LOUIS TOTH (58)
HALFBACK

Photos by Starman Studios, Lexington and Palm Beach

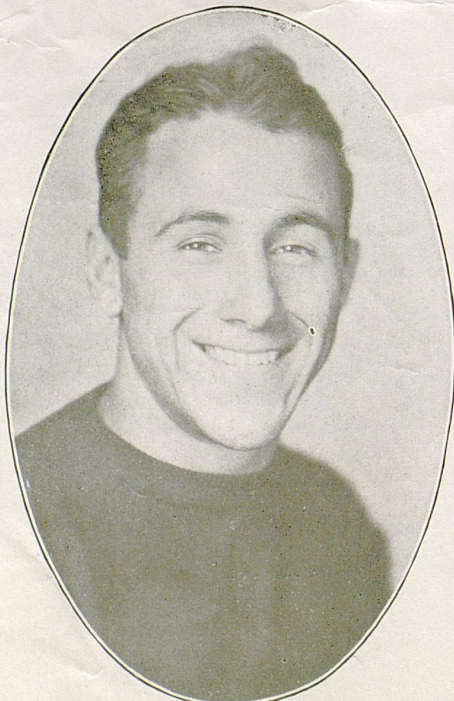
KENTUCKY PLAYERS



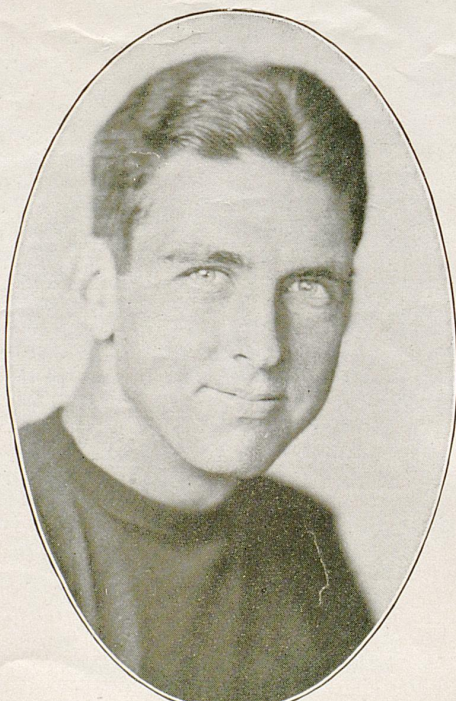
GEORGE YATES (56)
END



CECIL URBANIAK (33)
HALFBACK



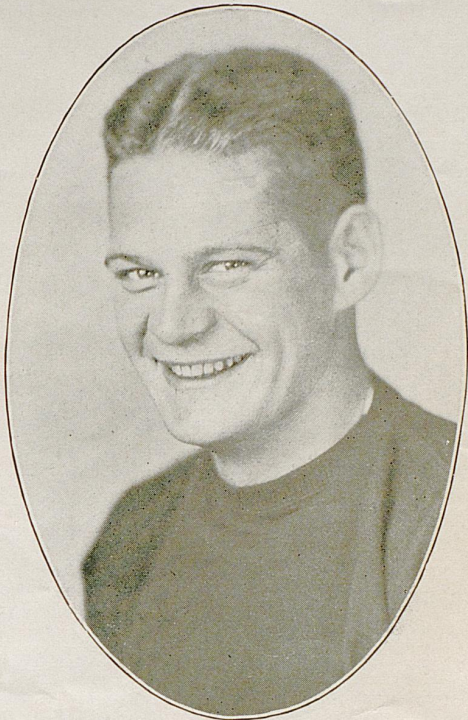
BUD CAVANA (49)
END



KENNETH ANDREWS (28)
END

Photos by Starman Studios, Lexington and Palm Beach

KENTUCKY PLAYERS



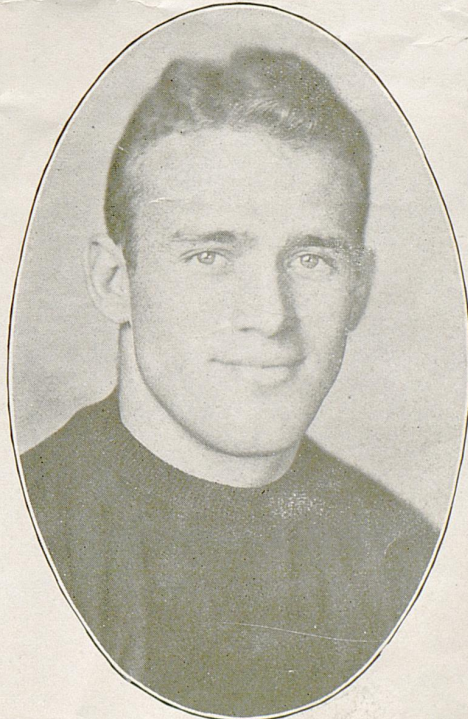
OLLIE JOHNSON (59)
GUARD



DARRELL DARBY (25)
END



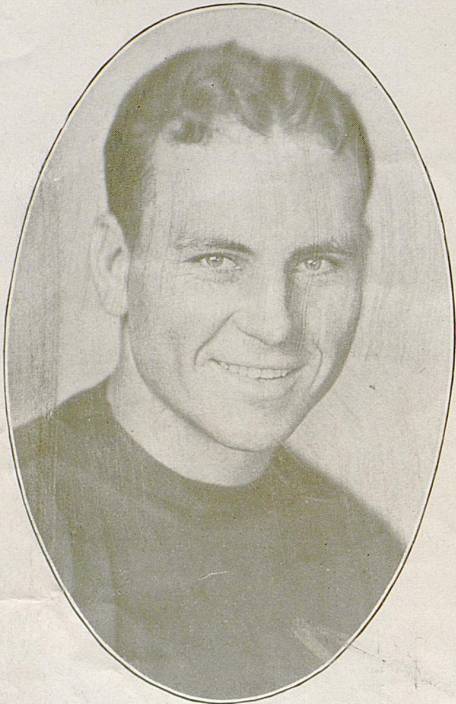
ROBERT MONTGOMERY (46)
TACKLE



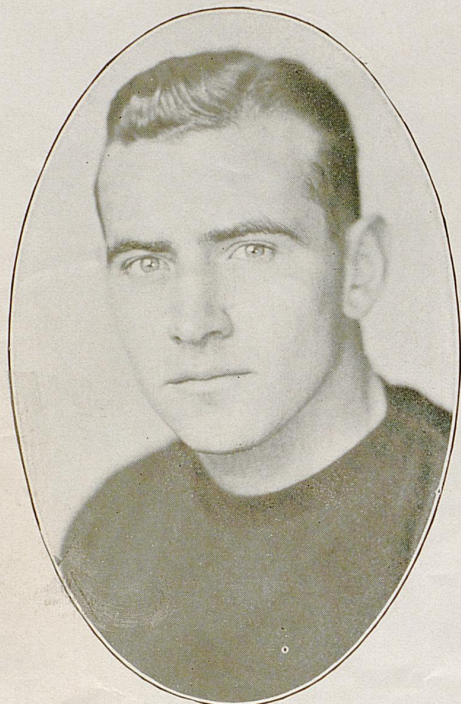
ELLIS JOHNSON (99)
HALFBACK

Photos by Starman Studios, Lexington and Palm Beach

KENTUCKY PLAYERS



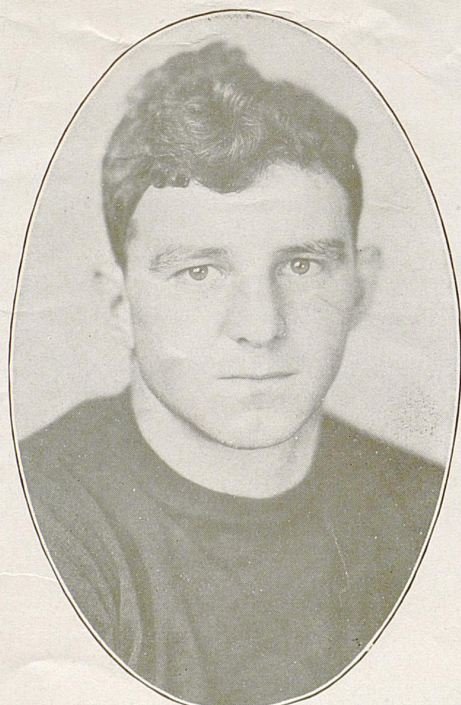
ED WILDER (63)
CENTER



WILLIAM HUMBER (37)
GUARD



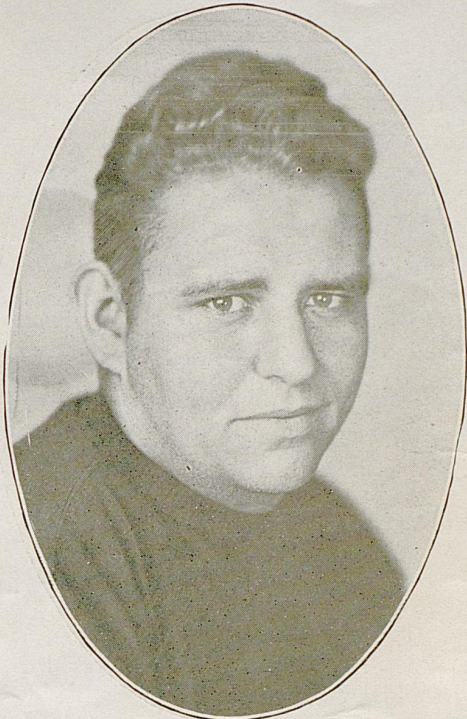
NEWELL WILDER (64)
TACKLE



"HOOT" GIBSON (27)
CENTER

Photos by Starman Studios, Lexington and Palm Beach

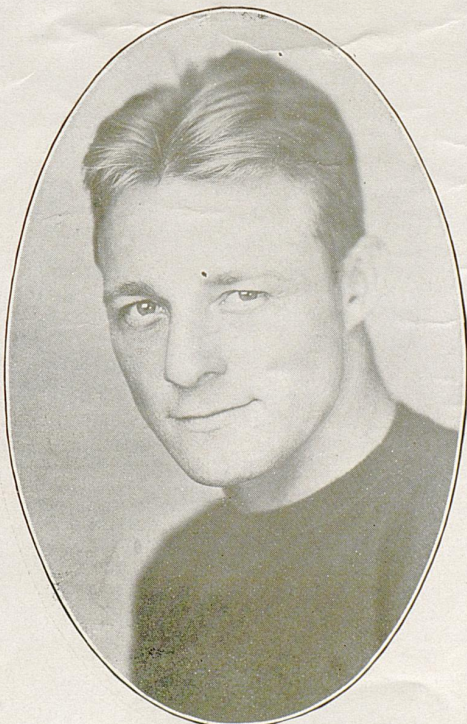
KENTUCKY PLAYERS



FRANK SEALE (47)
GUARD



LAWRENCE MCGINNIS (42)
GUARD



BURTON ALDRIDGE (20)
TACKLE



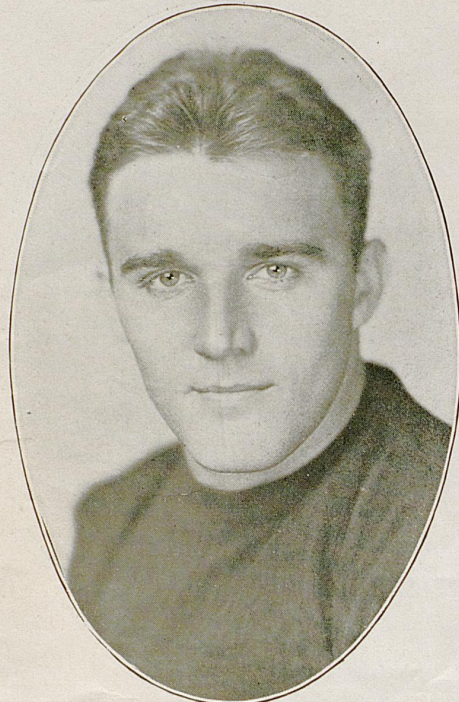
TOM PHIPPS (66)
FULLBACK

Photos by Starman Studios, Lexington and Palm Beach

KENTUCKY PLAYERS



GEORGE SKINNER (53)
END



GEORGE BICKEL (23)
HALFBACK



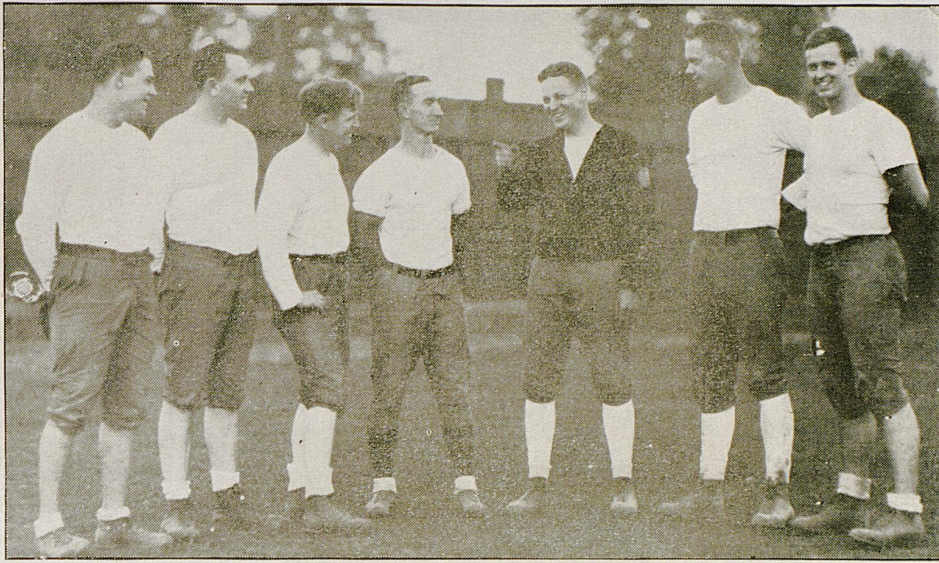
MALCOLM FOSTER (21)
HALFBACK



EDDIE EVANS (32)
HALFBACK

Photos by Starman Studios, Lexington and Palm Beach

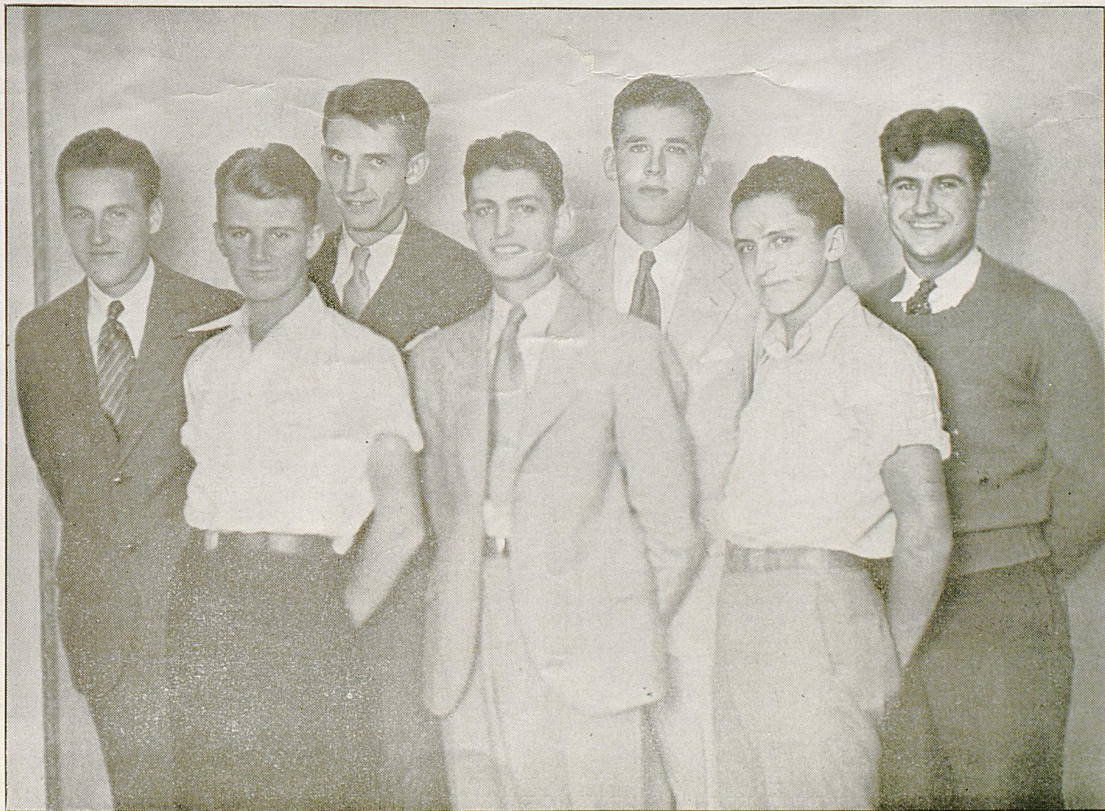
KENTUCKY COACHING STAFF



MILLER RUPP PRIBBLE GILB GAMAGE SHIVELY DRURY

The duty of developing a football team does not fall upon one man alone, as so many people think, but the head coach makes certain that he is provided with many capable assistants. Bernie Shively has been on the coaching staff for years and has done much to build up strong lines—that important factor in a team's success. Birkett Pribble has played a very important part in his training of the freshmen. Elmer Gilb who used to play in the backfield himself, has contributed his share to the defense of the backs and to their blocking on offense. And so on down the list, each coach does much to build the man-material into a strong and efficient machine—the Kentucky football team.

FOOTBALL MANAGERS



Robert Reynolds Jack Strother Hatcher Willis Orrill Duke Johnson Lloyd Featherston Joe Wheat
 Photos by Starman Studios, Lexington and Palm Beach

UNIVERSITY OF KENTUCKY FOOTBALL SQUAD, 1930



Reading from left to right, top row—Aldridge, Spicer, Gentile, Kelly, Seale, Rose, Montgomery, Forquer, Gaillard, Greathouse, Blevins, Tuttle, Humber, Baker, O. Johnson. Second row—Baughman, McGinnis, Darby, Foster, Urbaniak, E. Wilder, Frye, Engel, Dysard, Skinner, Goggin, Warner, Luther, T. Phipps, Bickel. Front row—E. Johnson, Wright, Andrews, Myers, Gibson, N. Wilder, Toth, Yates, McElroy, Williams, J. Phipps, Cavana, Richards, Kipping, Bronston.

BASKETBALL



ADOLPH RUPP
Basketball Coach



Reading from left to right, front row: Len Weakley, manager; Bud Cavana, Stanley Milward, Cecil Combs, Paul Brayer, captain and all-Southern guard; Lawrence McGinnis, Carey Spicer, George Yates. Back row: Hayes Owens, Lawrence Crump, Jake Bronston, Ercel Little, William Trott, William Kleiser, Louis McGinnis, Former Coach Johnny Mauer.

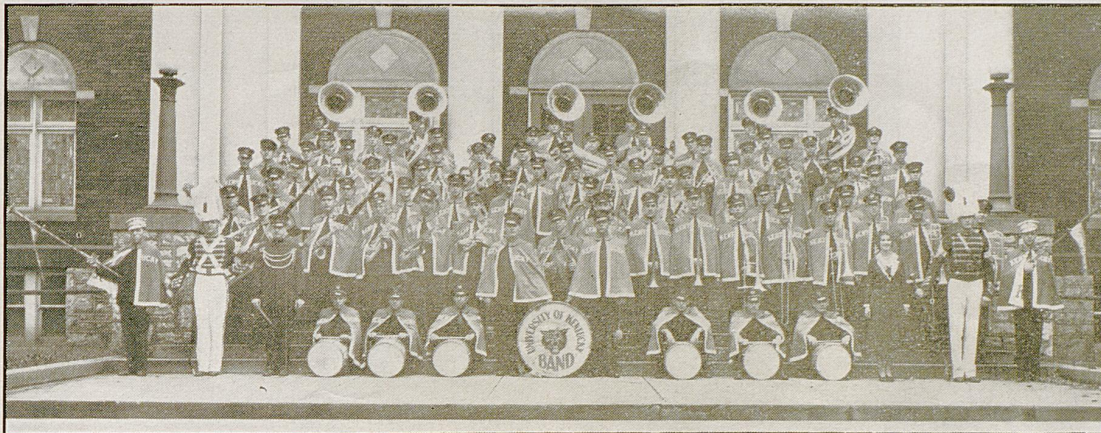
BASEBALL



PAT DEVEREAUX
Baseball Coach



"THE BEST BAND IN DIXIE"

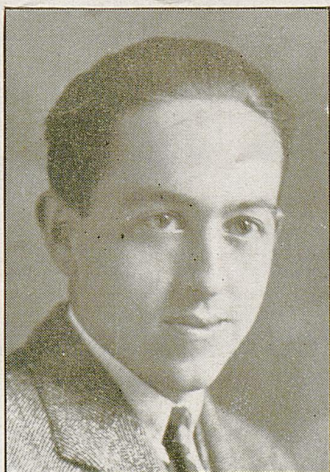


Above is seen the latest picture of Kentucky's high-stepping, soul-stirring band of approximately 100 pieces, known far and wide as the "Best Band in Dixie." For years the Kentucky band has been a feature of Wildcat football games—both at home and abroad.

The young lady is the sponsor, Miss Virginia Dougherty, of Lexington, a senior in the College of Arts and Sciences. Her position is regarded as the highest honor that can be won by a Kentucky co-ed. A sponsor is chosen each year by the members of the band.

There are two drum majors and they alternate in leading the band in its intricate formations on the field. The baton-wielders are Marion Custard, of Vincennes, Ind., and Crosby Bean, of Lexington. Elmer G. Sulzer is the director of the band.

In addition to playing at university affairs, the Kentucky band is heard frequently over radio station WHAS, at Louisville, broadcasting from the University extension studios.



NIEL PLUMMER
Director Athletic Publicity
University of Kentucky



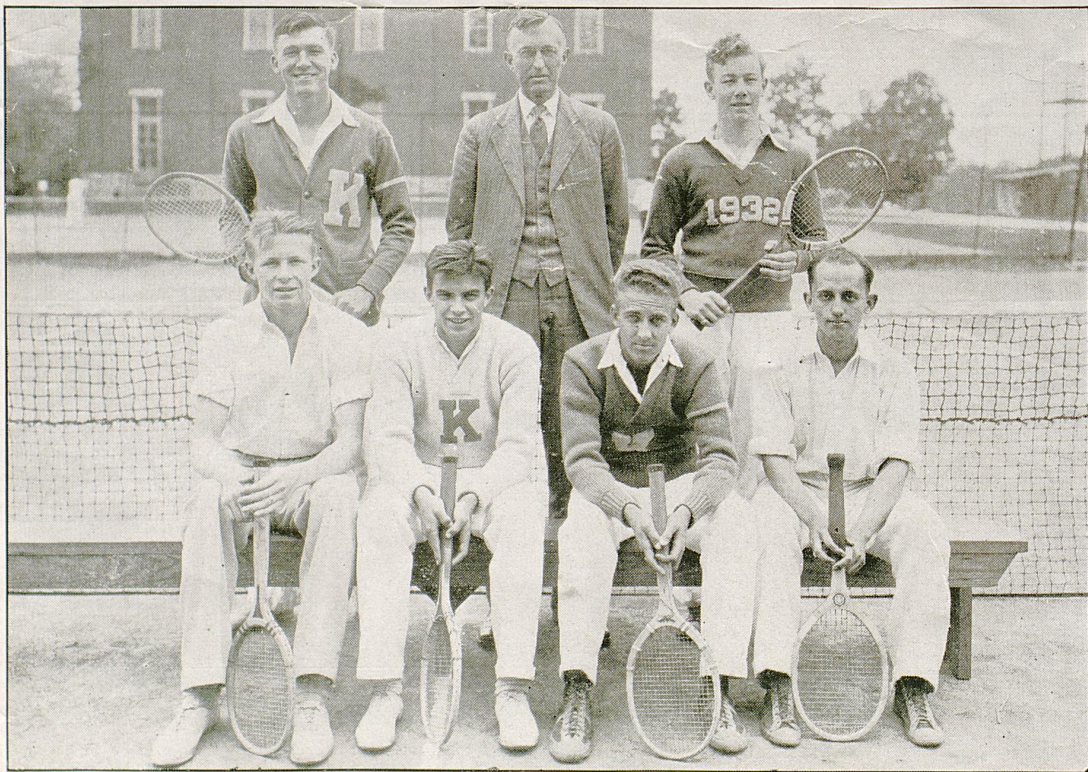
MRS. KATHERINE LYON
Football Ticket Sales

TENNIS



H. H. DOWNING
Varsity Tennis Coach

Photo by Deacon



1930 VARSITY TENNIS SQUAD, UNIVERSITY OF KENTUCKY

TRACK



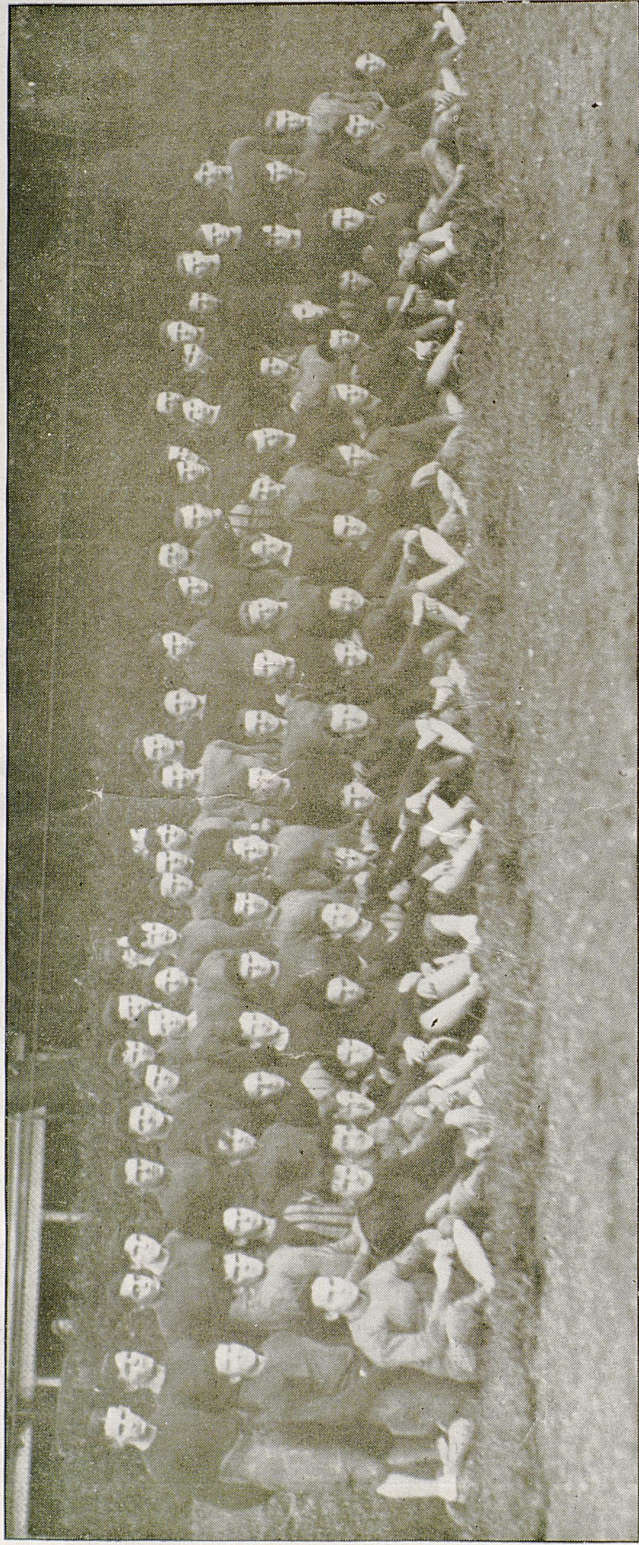
BERNIE SHIVELY

Bernie Shively, a graduate of the University of Illinois, directs the Wildcat track squad in addition to his regular work in coaching the Big Blue football line. At Illinois he was a wrestler and an All-American lineman. His work at Kentucky has borne excellent results each year.



1930 VARSITY TRACK SQUAD, UNIVERSITY OF KENTUCKY

KENTUCKY FRESHMEN FOOTBALL SQUAD, 1930



FOOTBALL SCHEDULE

AND TICKET INFORMATION

UNIVERSITY OF KENTUCKY

SCHEDULE

November 8 DUKE, at Durham, N. C.
November 15 V. M. I., at Lexington
November 27 TENNESSEE, at Knoxville

(Tear off along line and mail with check to Manager Football Ticket Sales,
University of Kentucky, Lexington)

UNIVERSITY OF KENTUCKY

FOOTBALL

Reservations for the 1930 Season

NAME.....
(Print name and address in ink)

ADDRESS.....

SCHEDULE AND PRICES—HOME GAMES

Nov. 1—Alabama Box Seats \$3.50 Reserved Seats \$3.00	Total \$.....
Home Coming			
Nov. 15—V. M. I. Box Seats \$3.00 Reserved Seats \$2.50	Total \$.....
Dad's Day			
Add 20 cents registry fee for each game.			Total remittance \$.....
Indicate choice of South or North side of stadium.			

GAMES AWAY FROM HOME

Nov. 8—Duke, at Durham, N. C.	Reserved Seats.....	\$2.00
Nov. 27—Tennessee, at Knoxville.	Reserved Seats.....	\$3.00

Virginia game will start at 2:30 p. m. Alabama and V. M. I. games will start at
2 p. m., Central Standard Time



PLEASURE
is always
on your side
when you smoke
Camels



© 1930, R. J. Reynolds Tobacco Co., Winston-Salem, N. C.

Press of The Kentucky Kernel, Lexington