

F224.14

UNIVERSITY OF KENTUCKY



CD  
3261  
.R470  
1941

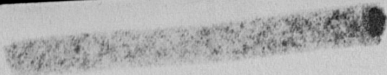


REPORT ON THE STATUS  
OF THE  
STATEWIDE RECORDS PROJECT  
OFFICIAL PROJECT: 165-1-64-161  
OFFICIAL SPONSOR: THE DEPARTMENT OF ARCHIVES  
LOUISIANA STATE UNIVERSITY

AND THE  
SURVEY OF FEDERAL ARCHIVES  
OFFICIAL PROJECT: 165-2-64-128  
OFFICIAL SPONSOR: THE NATIONAL ARCHIVES  
OFFICIAL CO-SPONSOR: HILL MEMORIAL LIBRARY  
LOUISIANA STATE UNIVERSITY

DECEMBER 31, 1941

Vergil L. Bedsole  
State Supervisor



C

THE UNIVERSITY OF CHICAGO  
LIBRARY

1950

1950

1950

## INTRODUCTION



This report is patterned after that of my immediate predecessor, John C. L. Andreassen's REPORT ON THE STATUS OF THE STATEWIDE RECORDS PROJECT . . . AND THE SURVEY OF FEDERAL ARCHIVES . . . , and covers the period from the end of that report (October 10, 1941) to the effective date of my resignation (December 31, 1941) on the Statewide Records Project and the Survey of Federal Archives.

During the three-month period, October-December 1941, both of the above-mentioned projects probably suffered the greatest personnel turnover of any similar period in their history. This turnover was due primarily to quota reduction, private employment, and the transfer of employees to WPA national defense projects. In this turnover the work of the editorial units was affected to a greater extent than that of the field units. On October 10, 1941, there were 8 full-time supervisors and approximately 60 certified workers on the Historical Records Survey unit of the Statewide Records Project engaged in editing publications; on December 31, 1941, there were 3 full-time supervisors and 8 certified workers engaged on the same tasks. Only parish archives had both supervisors and workers; manuscripts had only workers.

For a period of four years and seven months I have been first, assistant state supervisor and later, state supervisor of the Historical Records Survey and its successor the Statewide Records Project; since October 10, 1941, I have served also as the state supervisor of the Survey of Federal Archives. At the close of this period my chief hope is that a sufficient number of supervisors and certified employees will be available on the Historical Records Survey and the Survey of Federal Archives in early 1942 to complete not only the publications which have been suspended but to bring to early publication stage the large mass of materials which are in our project files and which only await final editing to be made available to the public in duplicated form.

VERGIL L. BEDSOLE  
State Supervisor  
Statewide Records and  
Survey of Federal Archives Projects  
Official Projects:  
165-1-64-161  
165-2-64-128

204 Old Criminal Courts Building  
Tulane and Saratoga Streets  
New Orleans, Louisiana  
December 31, 1941

## Statewide Records Project

During the period October-December 1941 greater emphasis was placed on the completion of many remaining odds and ends of the work of the Historical Records Survey in the parishes in Louisiana. In some cases, the materials to be secured by a few days work meant the difference between a complete volume which could be published, and an incomplete volume which could not be published but must be shelved until some future date. I feel that this objective was carried out very successfully. As a consequence, a huge back log of material has been completed and will be available for publication in 1942.

After this Historical Records Survey material was secured, the employees were transferred wherever possible to records renovation and re-indexing jobs. This procedure permitted the consolidation of the work into compact units which resulted in a better product, more efficient operation, and a material decrease in administrative costs and supervision. In many parishes, the work on four or five jobs of the Historical Records Survey was completed and all workers assigned to one job -- records renovation or reindexing.

Since October 10, 1941, the Historical Records Survey unit has published the following publications:

### INVENTORIES OF STATE ARCHIVES

Series III. The Executive

No. 2. The Lieutenant Governor. (v, 11 p.  
mimeo., November 1941)

### MANUSCRIPT PUBLICATIONS

An Inventory of the Collections of the Middle American Research Institute:

No. 4. Maps in the Library of the Middle American Research Institute.  
(ix, 282 p. mimeo., November 1941)

### CHURCH ARCHIVES PUBLICATIONS

Inventories of the Church and Synagogue  
Archives of Louisiana

Jewish Congregations and Organizations.  
(xvii, 183 p. mimeo., October 1941)

TRANSCRIPTIONS OF PARISH RECORDS OF LOUISIANA

No. 4. St. Bernard Parish: Series I. Police Jury Minutes.  
Vol. 3. 1895-1914. (xiv, 383 p. mimeo., October 1941)

MISCELLANEOUS PUBLICATIONS

Louisiana Newspapers, 1794-1940; a Union List of Louisiana Newspaper Files Available in Offices of Publishers, Libraries, and Private Collections in Louisiana. (x, 295 p. mimeo., October 1941)

The status of other inventories follow:

STATE ARCHIVES

Superior Court of Louisiana.  
(Ready to be sent to project national office for editorial review)

Other inventories of State archives nearing publication stage have been suspended due to loss of all State archival editorial personnel.

PARISH ARCHIVES

Lafourche Parish Archives.  
(Being stencilled.- To be distributed in January 1942)

Sabine Parish Archives Inventory.  
(Ready for stencilling)

Webster Parish Archives Inventory.  
(To be stencilled in January 1942)

Other parish archives inventories, such as Caddo, Evangeline, Morehouse, and St. John the Baptist will be ready for editing and publication early 1942. The loss of all but one supervisor and one certified worker on parish archives has seriously curtailed production.

MUNICIPAL ARCHIVES

Town of Thibodaux (To be submitted to Washington for editorial review)

Preliminary List of Municipal Incorporations (To be submitted to Washington for editorial review)

City of New Orleans

No work being done because no editor is available.

No editorial workers are presently assigned to municipal archives. Additional publications in 1942 will be consequent upon the reassignment of the municipal archives supervisor and one or more certified workers to this job.

#### MANUSCRIPTS

Guide to Depositories of Manuscript Collections in Louisiana, Second Edition (At the binder's and will be distributed about January 5, 1942)

Calendar of Jefferson Davis Post-War Letters.  
(Final editing nearing completion. Stencilling to begin in January)  
Inventory of Manuscript Collections in Louisiana State Museum.  
(Entry draft being rechecked)  
Inventory of the Manuscript Collections in the Tulane University of Louisiana.  
(Suspended due to loss of worker)

Vol. 6. Favrot Papers  
(Mimeographed. To be distributed in early January)

Vol. 7. Favrot Papers  
(Being stencilled. To be distributed in early February)

#### AMERICAN IMPRINTS INVENTORY PUBLICATIONS

List of Official Publications of Louisiana, 1803-1934  
(Being duplicated. To be distributed in February. Completion delayed because of shortage of mimeograph paper)

Preliminary Checklist of Out-of-State Newspapers in Louisiana  
(Stencilling to begin in January)

Checklist of Louisiana Imprints.  
(First volume in the Series from 1764 to 1876 being prepared)

#### CHURCH ARCHIVES

Directory of Churches and Religious Organizations in Louisiana.  
(Being stencilled. Probable distribution date: early February)

Publications on the church archives of the Protestant Episcopal Church, the Salvation Army, and the Volunteers of America are nearing final form. Publication to be delayed because no workers presently assigned to Church Archives

#### TRANSCRIPTIONS OF PARISH RECORDS OF LOUISIANA

No. 24. Iberville Parish Police Jury Minutes. General Index  
(Stencilled. Ready for duplication)

No. 26. Jefferson Parish Police Jury Minutes. General Index  
(Being stencilled)

No. 44. St. Bernard Parish Police Jury Minutes

Vol. 4. Duplicated and ready for binder's

Vol. 5. Being duplicated.

Vol. 6. Being duplicated.

MISCELLANEOUS PUBLICATIONS

Guide to Public Vital Statistics Records in Louisiana  
(To be stencilled in January)

Journal of the House of Representatives, 1861-62, Sixth Legislature,  
State of Louisiana.  
(To be stencilled in January)

Experiments with Rubber in Mexico, 1785-1798, as Revealed in the  
Manuscripts in the Middle American Research Institute of the Tulane  
University of Louisiana  
(Publication arrangements pending)

Inventory of Civilian Organizations Interested in Defense Activities  
(Entry draft being edited preparatory to stencilling)

Inventory of the Records of World War Emergency Activities in Louisiana,  
1916-20.  
(Draft approved for publication. Ready for stencilling)

No attempt will be made to detail Renovation and Indexing activities  
other than to point out that these jobs were the least affected by  
personnel changes. Several new units were opened during the period  
October - December 1941, inclusive.

The following typed volumes of Police Jury Minutes were distributed in  
six copies during the period October - December 1941:

No. 5. Avoyelles Parish Series 1.

Vol.	1.	1821-1843	524 pp.
"	2.	1843-1852	198 "
"	3.	1860-1870	598 "
"	4.	1870-1888	722 "
"	5.	1889-1897	496 "
"	6.	1898-1905	387 "
"	7.	1906-1908	378 "
"	8.	1908-1912	350 "
"	9.	1912-1916	333 "
"	10.	1916-1920	396 "
"	11.	1921-1926	367 "
"	12.	1926-1930	400 "
"	13.	1930-1934	208 "
"	14.	1934-1936	86 "
"	15.	1936-1940	248 "
Index		1898-1916	119 "

No. 7. Bienville Parish

Vol.	B	1856-1869	455 pp.
"	C	1869-1885	274 "
"	1.	1885-1904	603 "
"	2.	1904-1916	501 "

Vol. 3. 1916-1931 589 pp.  
" 4. 1931-1939 350 "

No. 24. Iberville Parish  
Vol. 6. 1936-1940 173 pp.

No. 28. Lafayette Parish  
Vol. 1. 1823-1857 252 pp.  
" 2. 1857-1870 207 "  
" 3. 1870-1889 396 "  
" 4. 1889-1895 374 "  
" 5. 1896-1904 569 "  
" 6. 1909-1907 338 "  
" 7. 1907-1910 317 "  
" 8. 1910-1915 535 "  
" 9. 1915-1918 515 "  
" 10. 1918-1920 248 "  
" 11. 1920-1922 211 "  
" 12. 1923-1925 192 "  
" 13. 1925-1927 174 "  
" 14. 1927-1931 376 "  
" 15. 1931-1934 368 "  
" 16. 1934-1940 156 "  
Index 1823-1911 175 "  
" 1823-1931 70 "

No. 30. LaSalle Parish  
Vol. 1. Min. 1908-1921 365 pp.  
" 2. " 1921-1938 405 "  
" 1. Ord. 1908-1922 600 "  
" 2. " 1922-1937 326 "

No. 31. Lincoln Parish  
Vol. 1. 1877-1890 384 pp.  
" 2. 1891-1908 484 "  
" 3. 1908-1919 301 "  
" 4. 1920-1922 67 "  
" 5. 1922-1934 400 "  
" 6. 1934-1940 327 "

No. 45. St. Charles Parish  
Vol. 1. 1811-1817 108 pp.  
" 2. 1827-1833 43 "  
" 3-4. 1835-1854, 1864-1866 260 pp.  
" 5. 1854-1862 210 pp.  
" 6. 1866-1873 214 "  
" 7. 1883-1897 401 "  
" 8. 1897-1908 577 "  
" 9. 1908-1915 596 "  
" 10. 1915-1923 338 "  
" 11. 1924-1934 397 "  
" 12. 1934-1940 214 "



No. 60. Webster Parish  
 Vol. 1. 1874-1884 566 pp.  
 " 2. 1884-1900 482 "  
 " 3. 1900-1919 491 "  
 " 4. 1919-1925 82 "  
 " 5. 1925-1932 286 "  
 " 6. 1932-1936 246 "  
 " 7. 1936-1940 274 "

No. 64. Winn Parish  
 Vol. A 1880-1900 960 pp.  
 " B 1901-1911 800 "  
 " C 1911-1932 490 "  
 " D 1932-1939 229 "

The following volumes of Police Jury Minutes were typed in six copies during the period October - December 1941 but have not been distributed:

No. 1. Acadia Parish  
 Vol. 4. 1916-1921

No. 34. Morehouse Parish  
 Vol. 1. Min. 1893-1910 498 pp.  
 " 2. " 1910-1924 409 "  
 " 3. " 1924-1930 299 "  
 " 4. " 1930-1937 299 "  
 " 5. " 1937-1940 114 "

No. 41. Red River Parish  
 Vol. 3. 1936-1940 233 pp.

Survey of Federal Archives

Since October 10, 1941, all except a few key editorial workers have been transferred to WPA national defense jobs and the units closed. The loss of workers has delayed but not otherwise materially affected the publication schedule. The forthcoming resignation of the Unit Supervisor of this project effective January 3, 1942, will affect production of publications. The reopening of the records renovation units of this project will be dependent upon available certified workers. It is probable that all of the publications of this project will be completed and distributed by mid-February 1942. During the period October - December 1941 the following publications were distributed.

No. 4. ARKANSAS

- Series VIII. The Department of the Interior (iii, 8 p. mimeo., June 1941)
- Series XV. Works Progress Administration (iv, 68 p. mimeo., June 1941)
- Series XVI. The Farm Credit Administration (iii, 8 p. mimeo., April 1941)
- Series XVII. The Miscellaneous Agencies (iv, 29 p. mimeo., April 1941)

No. 17. LOUISIANA

- Series VIII. The Department of the Interior (iii, 58 p. mimeo., November 1941)
- Series XIV. The Emergency Relief Administration (iii, 14 p. mimeo., June 1941)
- Series XV. Works Progress Administration (v, 103 p. mimeo., June 1941)
- Series XVI. The Farm Credit Administration (iii, 13 p. mimeo., April 1941)
- Series XVII. Miscellaneous Agencies (vii, 127 p. mimeo., June 1941)

No. 23. MISSISSIPPI

- Series XIII. The Civil Works Administration (iii, 4 p. mimeo., June 1941)
- Series XIV. The Emergency Relief Administration (iii, 17 p. mimeo., November 1941)
- Series XV. Works Progress Administration (v, 81 p. mimeo., June 1941)
- Series XVI. The Farm Credit Administration (iv, 5 p. mimeo., March 1940)
- Series XVII. Miscellaneous Agencies (v, 27 p. mimeo., June 1941)

No. 41. TENNESSEE

Series XII. The Veterans' Administration (iii, 36 p. mimeo.,  
June 1941)

Series XVII. The Miscellaneous Agencies (vi, 85 p. mimeo.,  
May 1941)

The following publication is being mimeographed:

No. 41. TENNESSEE

Works Progress Administration  
(207 p.)

The following publications are in various stages of publication:

Ship Registers and Enrollments of New Orleans, Louisiana

- Vol. II (1821-1830)  
(Stencilled; will be mimeographed in January)
- Vol. III (1831-1840)  
(Stencilled; will be mimeographed in January)
- Vol. IV (1841-1850)  
(Being stencilled)
- Vol. V (1851-1860)  
(Being stencilled)
- Vol. VI (1861-1870)  
(Draft being indexed)

Upon the completion of the above-mentioned volumes, it is probable that the editorial work of the Survey of Federal Archives in Louisiana will be closed.

Section VII, The Assessment Schedule (1971-1972)  
Section VIII, The Assessment Schedule (1972-1973)

The following publication is being prepared:

Section VII, The Assessment Schedule

Section VIII, The Assessment Schedule

(1971-1972)

The following publications are to be prepared:

Section VII, The Assessment Schedule

Section VIII, The Assessment Schedule

(1972-1973)

Section VII, The Assessment Schedule

(1973-1974)

(Being compiled)

Section VIII, The Assessment Schedule

(1974-1975)

(Being compiled)

Section VII, The Assessment Schedule

(1975-1976)

The publication of the assessment schedule is a priority task  
and the statistical work of the Survey of Federal Revenue will  
be closely