

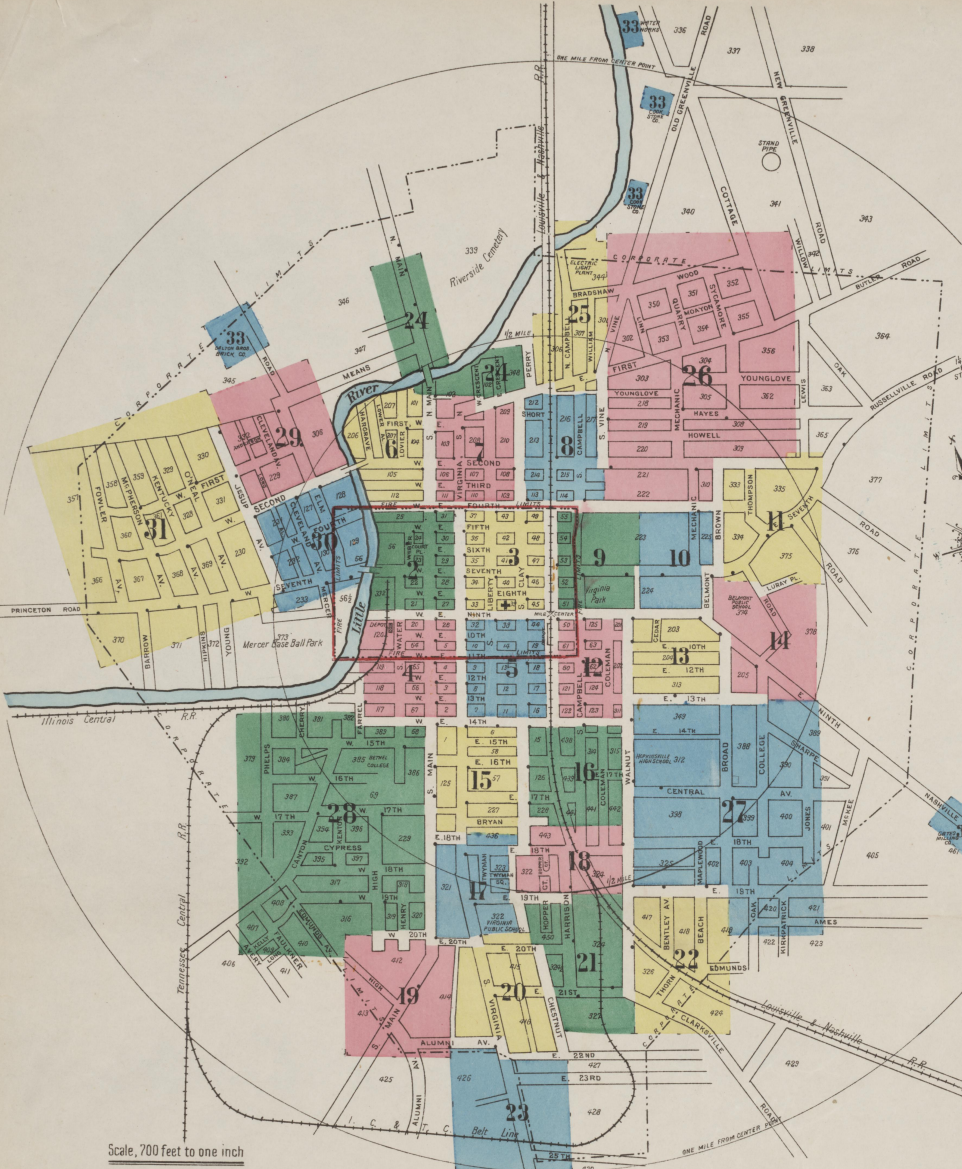
HOPKINSVILLE

Christian County KENTUCKY

Janborn Map Company of New York

Sept 1923

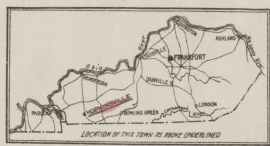
Copyright 1923 by the Janborn Map Co.



Population 12,000
Prevailing Winds, West and South West.

WATER FACILITIES.
Gravity and direct pressure system of water works installed in 1895. Owned and operated by the Hopkinsville Water Co. Water supply from Little River Dam impounding 50 million galls for general use. Reserve dam impounding 350 million galls for emergency use. Water pumped through 18" main to stand pipe of 150,000 galls capy, 100 ft high, 15 ft diam. Base 220 ft above business section of town by two Laidlaw-Dunn-Gordon duplex steam pumps capy one million galls each and one Allen-Clairmont pumping engine capy two million galls per 24 hours. In case of necessity water is pumped directly into mains. 1 1/2" pipes of cast iron water pipe, 4" to 12" diam. 140 double hydrants. Average gravity pressure 75 lbs. (high 100 lbs.) direct pressure 10 lbs.

FIRE DEPARTMENT.
One chief and 12 men fully paid. 10 men on duty every night. One Oberchain-Boyer combination chemical and hose and truck with 40 gal. chemical tank, 200 ft. chemical hose and 1000 ft. 2 1/2" hose. One Oberchain-Boyer hose and ladder auto truck 400 ft. 2 1/2" hose. About 3000 ft. 2 1/2" hose in fair condition.
Fire alarm by telephone bell and siren.



KEY

- Fire walls in red roof
- Fire walls in blue roof
- Fire walls in yellow roof
- Fire walls in green roof
- Fire walls in white roof
- Fire walls in black roof
- Fire walls in brown roof
- Fire walls in purple roof
- Fire walls in pink roof
- Fire walls in orange roof
- Fire walls in grey roof
- Fire walls in light blue roof
- Fire walls in light green roof
- Fire walls in light yellow roof
- Fire walls in light purple roof
- Fire walls in light pink roof
- Fire walls in light orange roof
- Fire walls in light grey roof
- Fire walls in light light blue roof
- Fire walls in light light green roof
- Fire walls in light light yellow roof
- Fire walls in light light purple roof
- Fire walls in light light pink roof
- Fire walls in light light orange roof
- Fire walls in light light grey roof

INDEX

STREETS	NUMBER	STREET	NUMBER	STREET	NUMBER	STREET	NUMBER	STREET	NUMBER
Almond Ave.	100-110	Fourth E.	400-500	Main E.	600-700	Second W.	800-900	Twenty-third E.	1000-1100
...

* Indicates only one side of Street shown.



Scale of Feet.

Copyright 1923 by the Seaborn Map Co

3

7

8

3

SEPT. 1923
HOPKINSVILLE
KY.



E. 4TH ST.

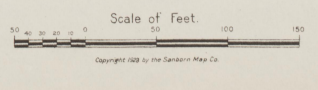
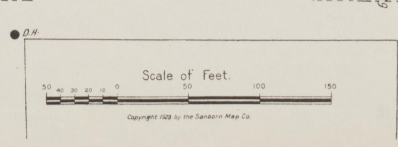
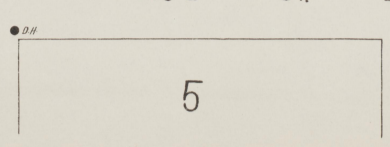
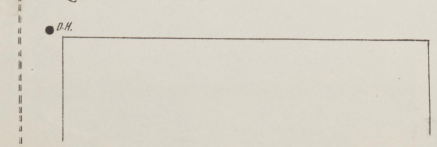
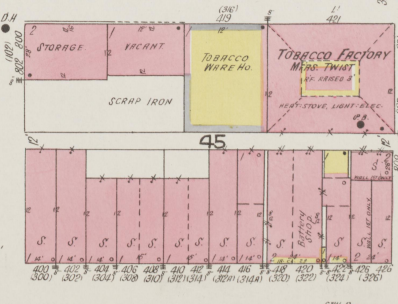
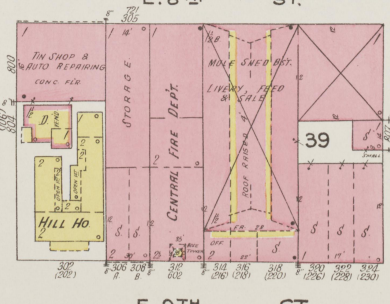
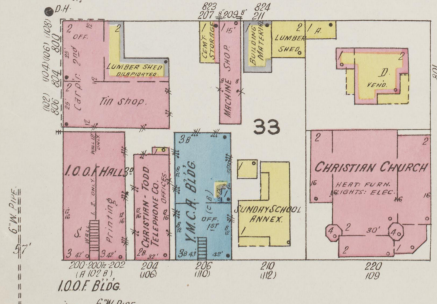
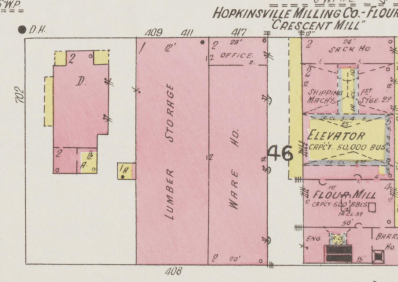
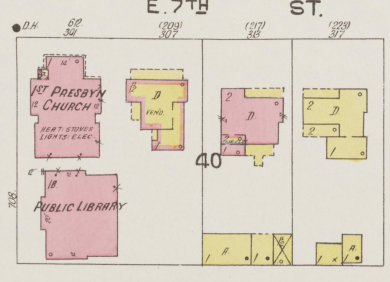
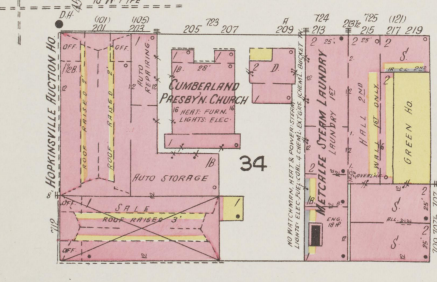
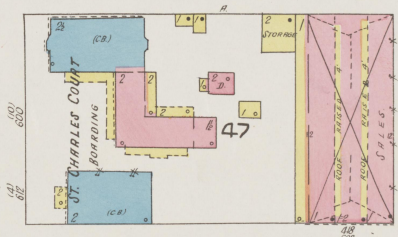
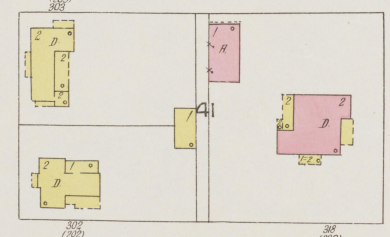
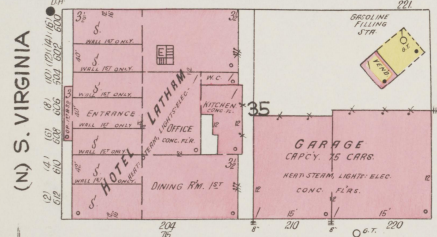
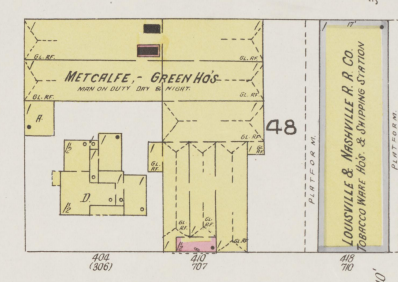
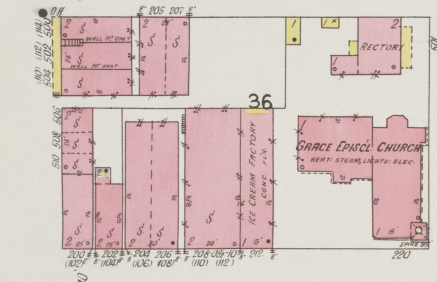
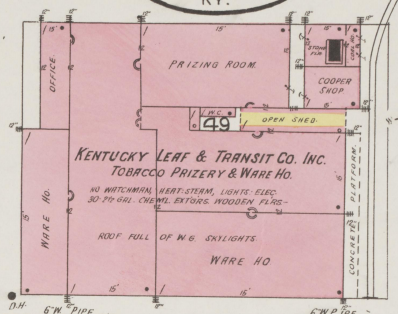
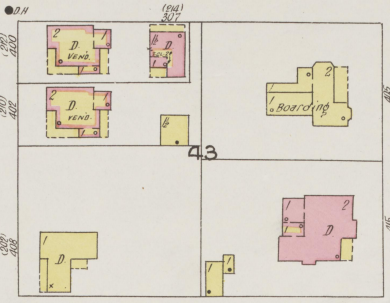
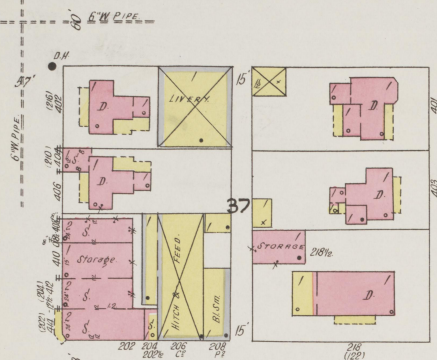
E. 5TH ST.

E. 6TH ST.

E. 7TH ST.

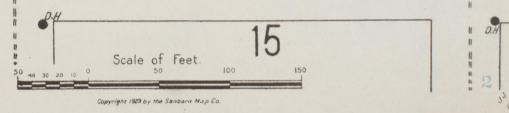
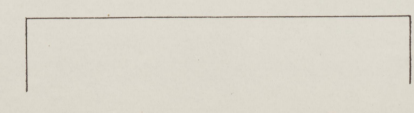
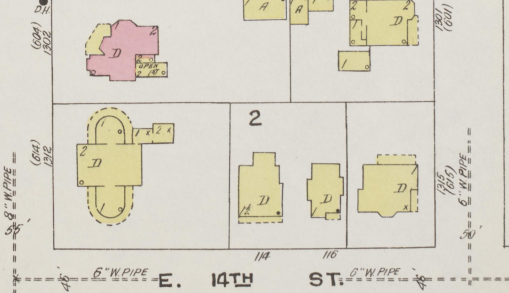
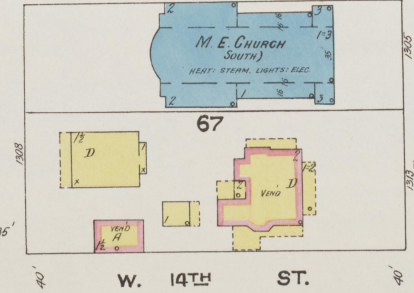
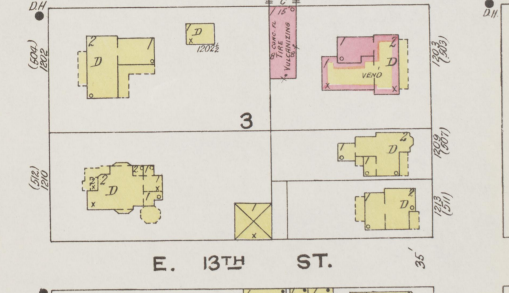
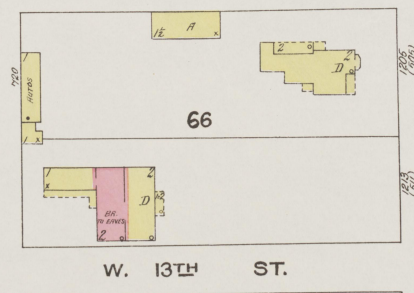
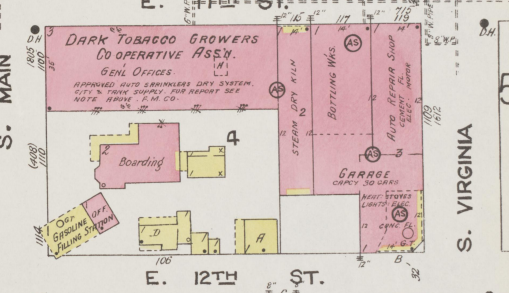
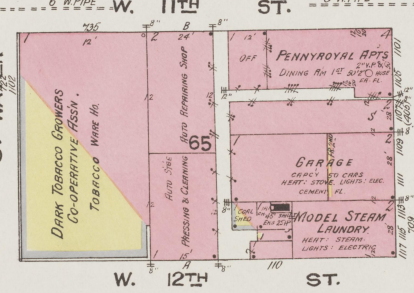
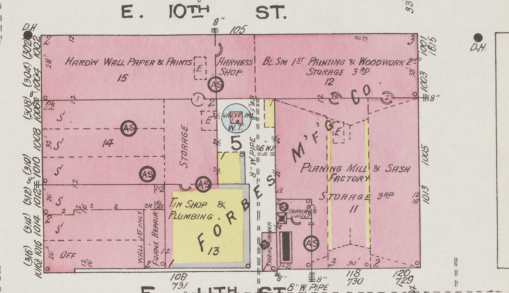
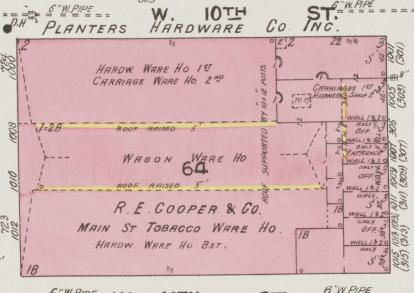
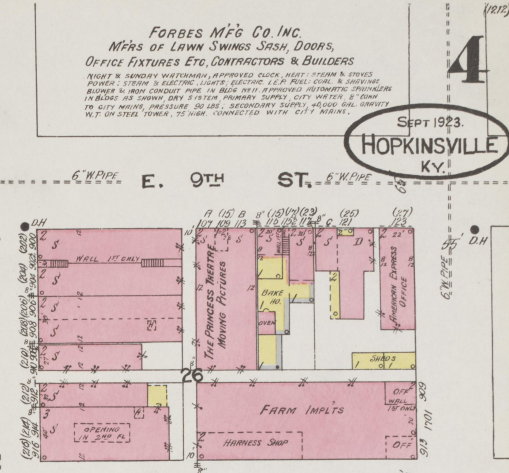
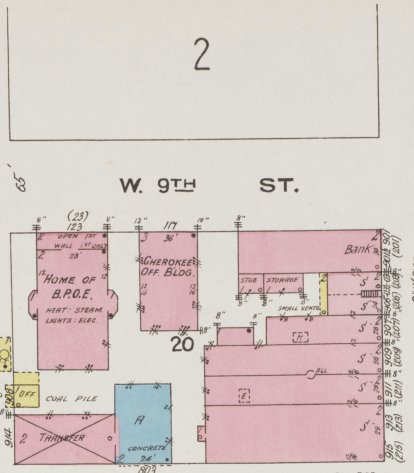
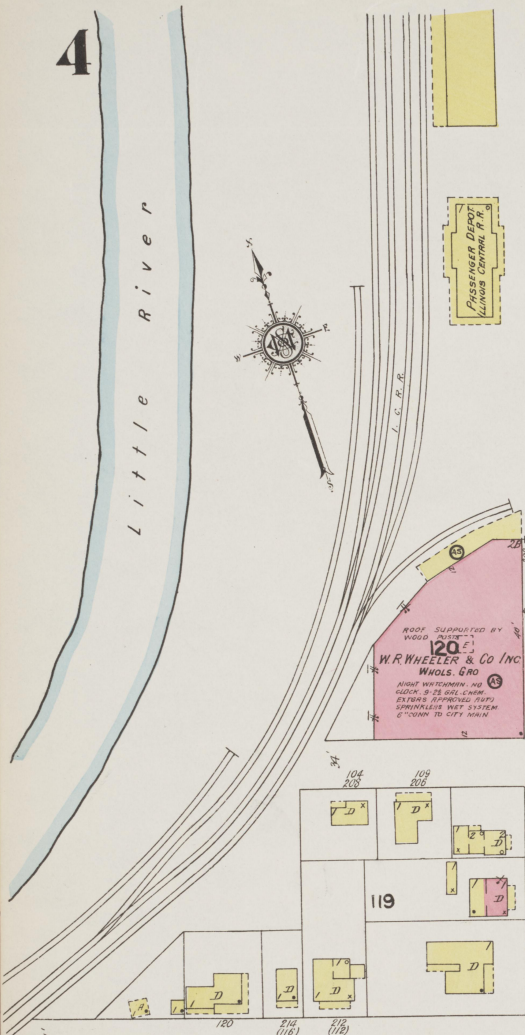
E. 8TH ST.

E. 9TH ST.



SEPT 1923.
HOPKINSVILLE
KY.

FORBES MFG CO INC.
Mfrs of LEWIS SWINGS SASH, DOORS,
OFFICE FIXTURES ETC, CONTRACTORS & BUILDERS
NIGHT & SUNDAY WATERWORK, APPROVED CLOCKS, HEAT, STEAM & STOKES
PUMPS, STEAM & ELECTRIC LIGHTS, ELEVATORS, LIFT, REEL SCARS, & JOURNAL
BURNER & IRON CONDUIT PIPE IN BLUE PAINT, APPROVED AUTOMATIC SPRINKLER
IN BLDGS. AS TANKS, DRY STACKS, PUMPS, SUPPLY CITY WATER, & 8" DIA
TO CITY MAIN, PRESSURE 50 LBS., SECONDARY SUPPLY 4500 GAL. CAPACITY
W.T. IN STEEL TOWER, 75 HIGH, CONNECTED WITH CITY MAIN.

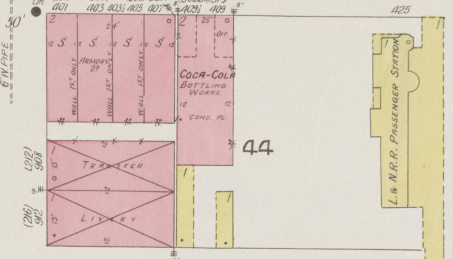
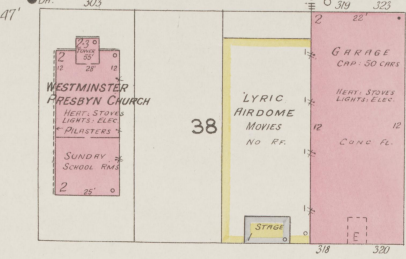
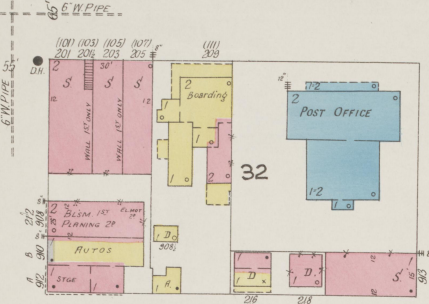


Scale of Feet
0 50 100 150

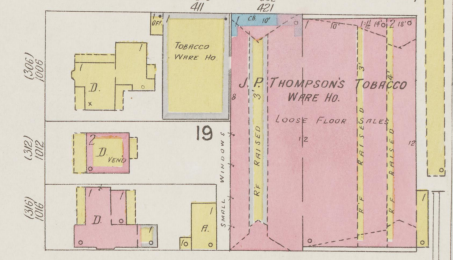
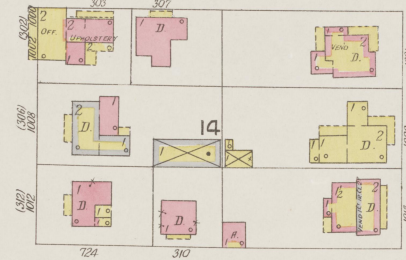
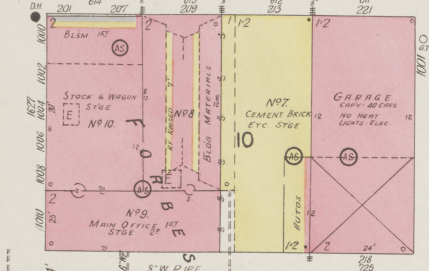
3

E. 9TH ST.

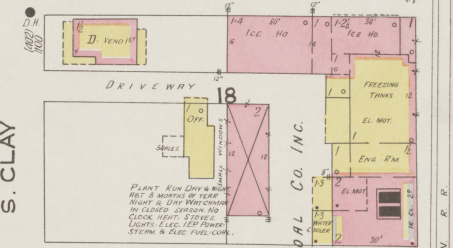
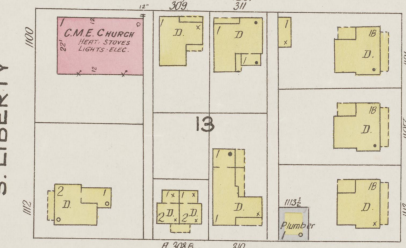
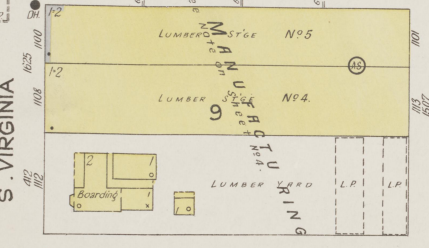
6" W. PIPE



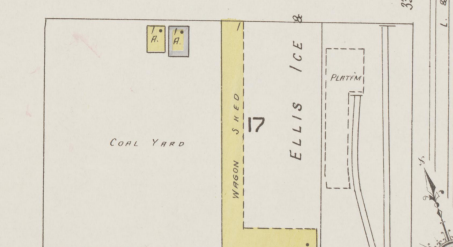
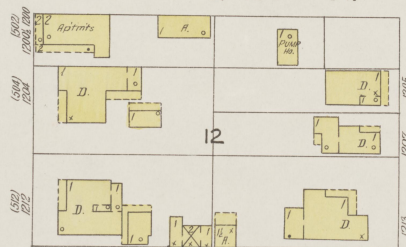
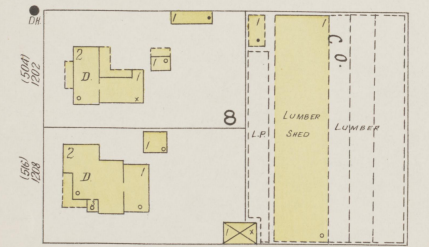
E. 10TH ST.



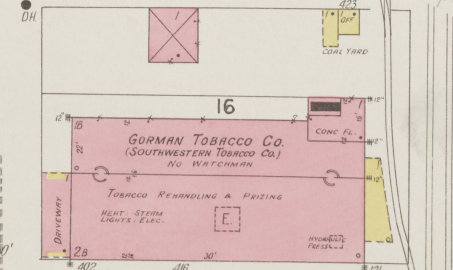
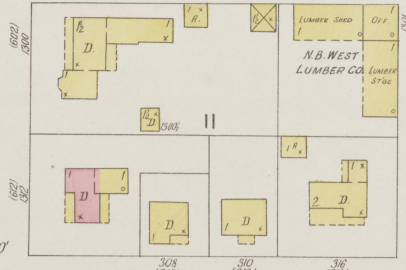
E. 11TH ST.



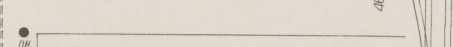
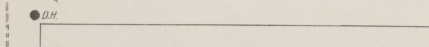
E. 12TH ST.



E. 13TH ST.



E. 14TH ST.

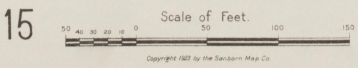


S. VIRGINIA

S. LIBERTY

S. CLAY

12



Copyright 1923 by the Seaboard Map Co.

16

15



Scale of Feet.
0 50 100 150
Copyright 1923 by the Sanders Map Co.

SEPT. 1923
HOPKINSVILLE
KY.

7

7

24



Scale of Feet.

Copyright 1923 by the Seaboard Map Co.

2

3

SHORT ST.

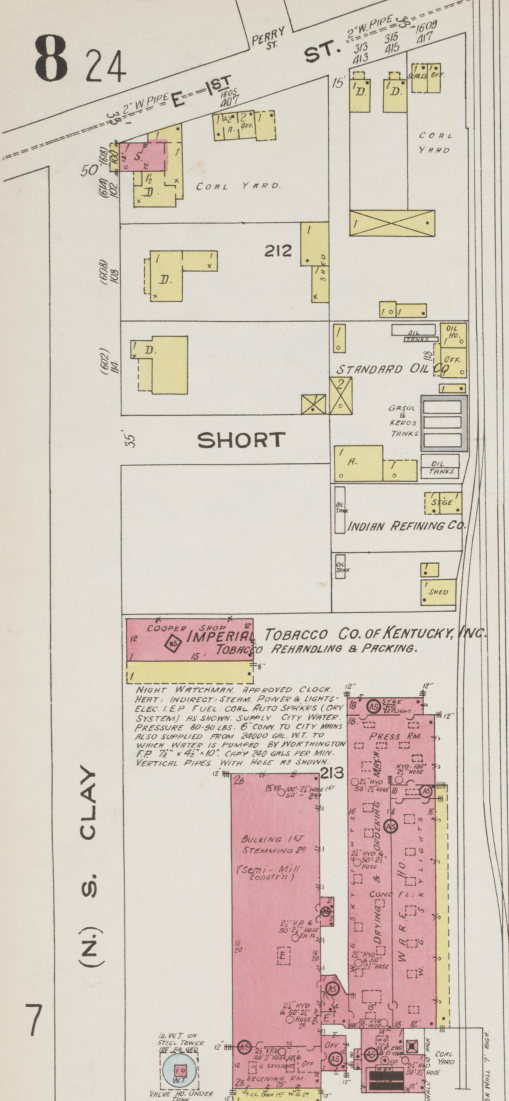
8

12

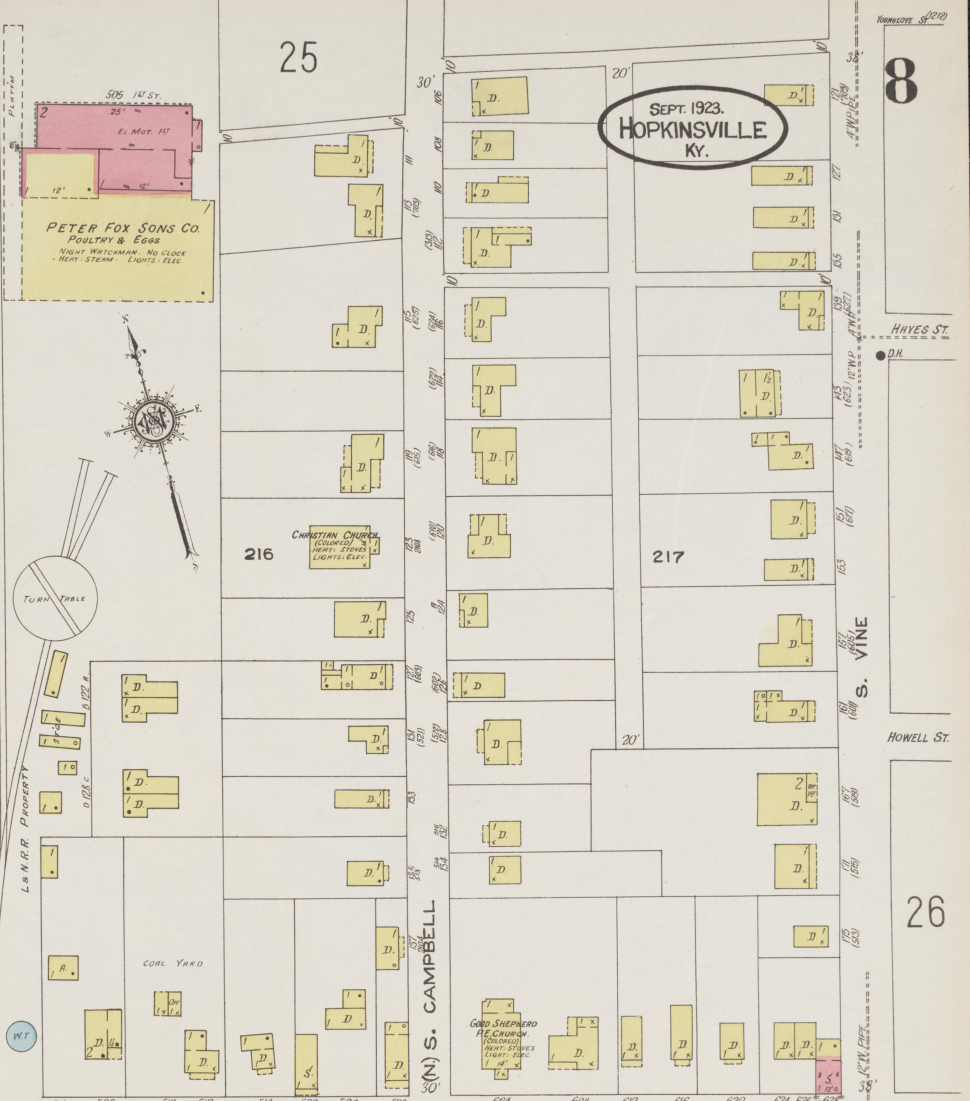
8 24

PERRY ST.

ST.



25

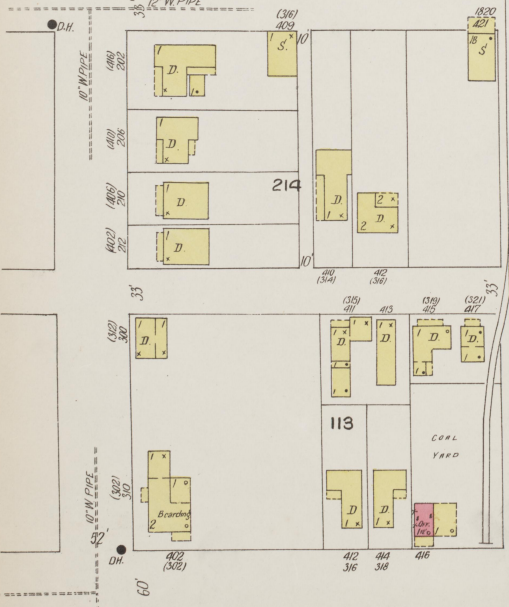


8

SEPT. 1923.
HOPKINSVILLE
KY.

7

(N.) S. CLAY

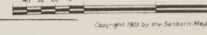


26



E. 4TH ST.

Scale of Feet.



Copyright 1923 by the Seaboard Map Co.

2 912

9

8

26

9

SEPT 1923.
HOPKINSVILLE
KY.

E. 4TH ST.

55
W. Mutual Rk.
Tobacco Ware Ho.
GEO. HOPKINSVILLE
NIGHT WATCHMAN & CLOCK REPT.
STEAM LIGHTS, ELECT. - AUTO SWITCHERS.
WET SYSTEM PRIMARY SUPPLY. CITY WATER ALSO SUPPLY DAL IN TANK. 45' HIGHEST LINE OF SPILL. & 80' HIGHEST LINE OF SPILL.

(301) 801 (303) 803 (305) 805 (317) 817 (319) 819 (519) 829 (523) 824 (525) 831 (527) 837 (539) 839 (609) 701 (611) 703 (613) 705

54
Tobacco Ware Ho.
AT FULL OF SKYLIGHTS

Tobacco Re-Handling Ho.
HEAT-STEAM & STOVES LIGHTS ELEC.

223
Tobacco Ware Ho.

E. 6TH ST.

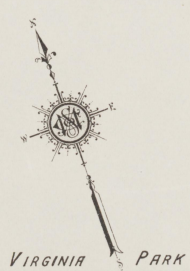
53
CONC. TRAD.

223
VEND

E. 7TH ST.

52
CONC. TRAD.

223
VEND



E. 8TH ST.

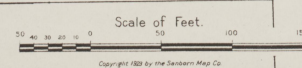
51
R. R. FREIGHT DEPOT

224
VEND

E. 9TH ST.

51
R. R. FREIGHT DEPOT

224
VEND



Copyright 1923 by the Sanborn Map Co.

12

13

COLEMAN ST.

WALNUT ST.

34 351

10

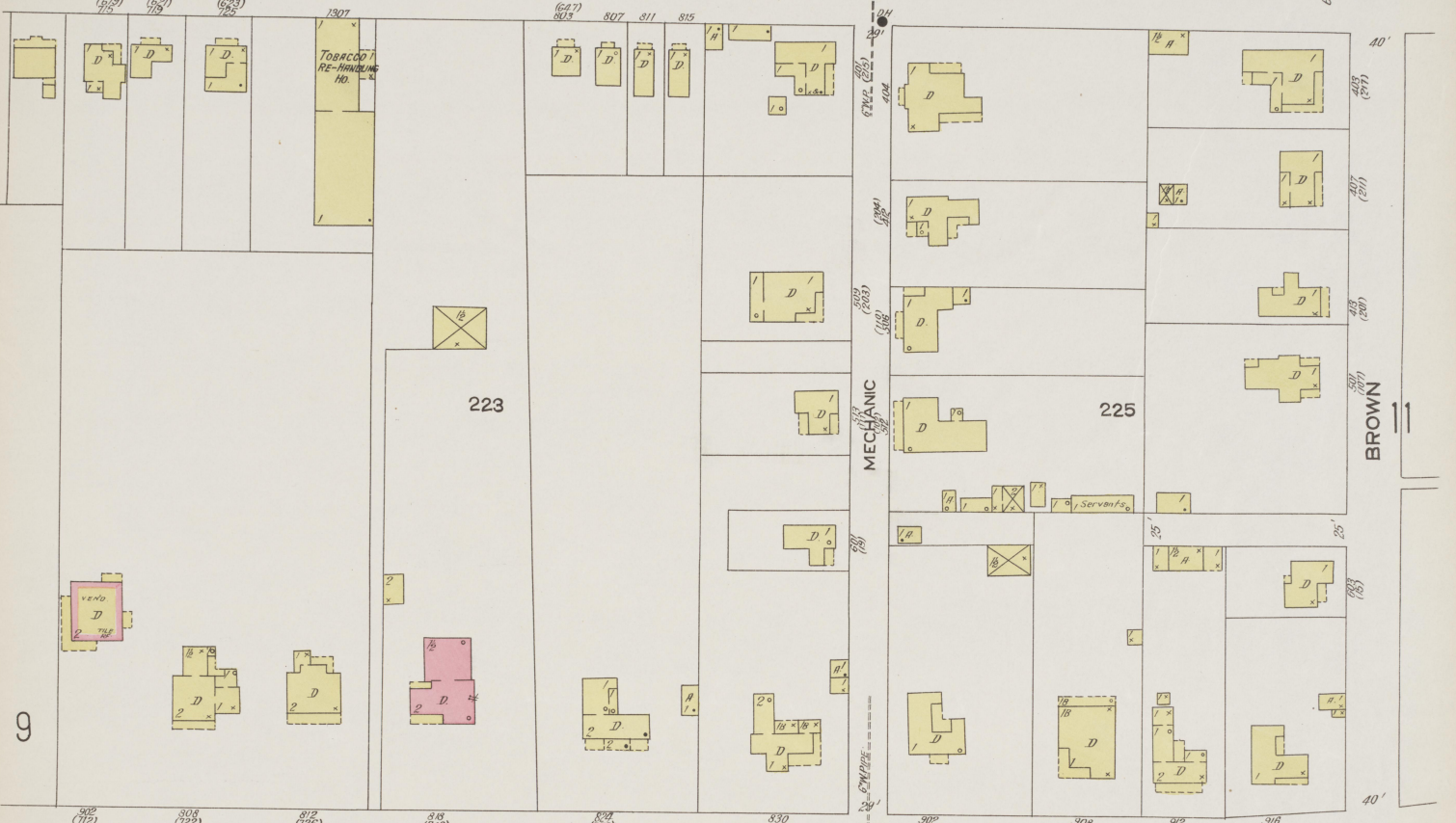
26

SEPT 1923
HOPKINSVILLE
Ky.

10

(212)

E. 4TH ST.



E. 7TH ST.

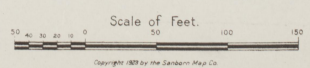


E. 9TH ST.



14

BELMONT



Scale of Feet.
Copyright 1923 by the Sanborn Map Co.

13

CEDAR ST.

E. 9TH ST.

11

26

309

365

(2R)

11



SEPT 1923
HOPKINSVILLE
KY



Scale of Feet.
0 50 100 150
Copyright 1923 by the Sanborn Map Co.

12

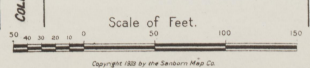


5

13

27

16



Copyright 1923 by the Searson Map Co.



Scale of Feet.
 50 100 150
 Copyright, 1923 by the Sanborn Map Co.

SEPT 1923.
HOPKINSVILLE
KY.

14

(1212)

11

LURAY PL. ARBITRARY



378

H. BOHN'S
APARTMENT HO.
1920

374
(3 A)
BELMONT PUBLIC SCHOOL
Gymnasium & Hall
Night School
Lunch Room
O. V. & R. R. 2nd FLOOR
S. W. FLOOR

M. S. LEAH
APARTMENTS
1920

ROAD

E. 10TH ST.

E. 12TH ST.

13

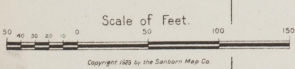
BROAD

E. 13TH ST.

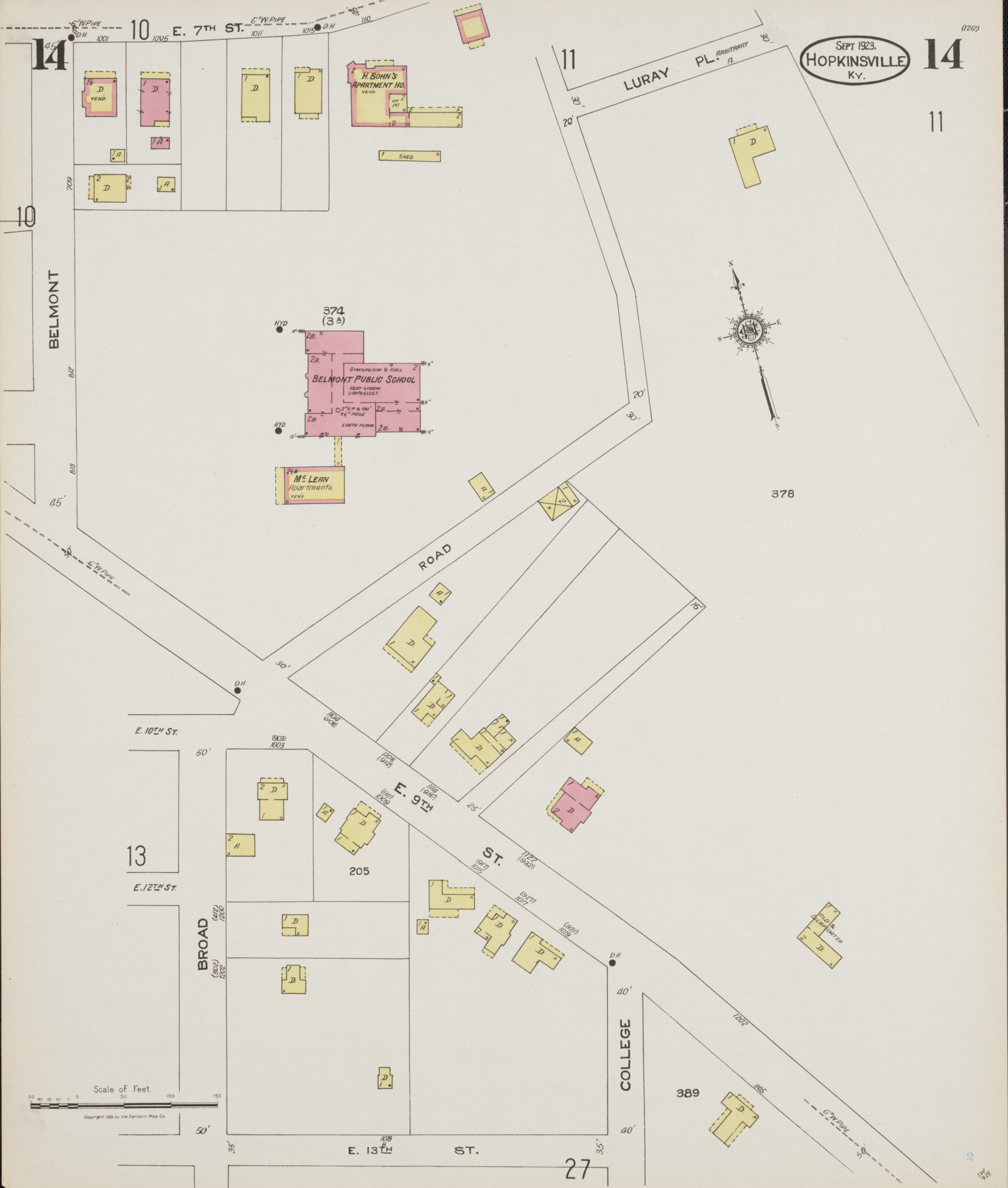
27

COLLEGE

389



Copyright 1923 by the Sanborn Map Co.



W. 14TH ST. 46 6" W. PIPE 15 E. 14TH ST. (121) 302 (127) 303 (130) 301 (137) 304 (141) 305 (145) 306 6" W. PIPE 15

4

1ST BAPTIST CHURCH.
HEAT - FURNACE LIGHTS GAS

SUNDAY SCHOOL ANNEX

5

6

SEPT 1928
HOPKINSVILLE
KY.

1

2

3

4

5

6

7

8

9

10

11

12

13

14

15

16

17

18

19

20

21

22

23

24

25

26

27

28

S. MAIN

E. 15TH ST.

58

125

E. 17TH ST.

E. 18TH ST.

1

2

3

4

5

6

7

8

9

10

11

12

13

14

15

16

17

18

19

20

21

22

23

24

25

26

27

28

S. VIRGINIA

E. 16TH ST.

57

E. 17TH ST.

227

BRYAN

436

204

208

212

216

220

224

228

232

236

240

244

248

252

256

260

264

268

272

276

280

284

288

292

296

300

304

308

312

316

320

324

328

332

336

340

344

348

352

356

360

364

368

372

376

380

384

388

392

396

400

404

408

412

416

420

424

428

432

436

440

444

448

452

456

460

464

468

472

476

480

484

488

492

496

500

504

508

512

516

520

524

528

532

536

540

544

548

552

556

560

564

568

572

576

580

584

588

592

596

600

604

608

612

616

620

624

628

632

636

640

644

648

652

656

660

664

668

672

676

680

684

688

692

696

700

704

708

712

716

720

724

728

732

736

740

744

748

752

756

760

764

768

772

776

780

784

788

792

796

800

804

808

812

816

820

824

828

832

836

840

844

848

852

856

860

864

868

872

876

880

884

888

892

896

900

904

908

912

916

920

924

928

932

936

940

944

948

952

956

960

964

968

972

976

980

984

988

992

996

1000

S. CLAY

Scale of Feet.

0 50 100 150

Copyright 1928 by the Sanborn Map Co.

16

15

16

S. CLAY

S CLAY

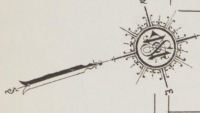
SEPT 1928.
HOPKINSVILLE
KY.

E. 16TH ST.

E. 16TH ST.

E. 16TH ST.

E. 14TH ST.



228

126

15

5

440

439

438

18

S. W PIPE
GAMPELL

E. 17TH ST.

COLEMAN

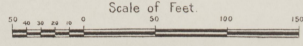
WALNUT

12

442
(315)

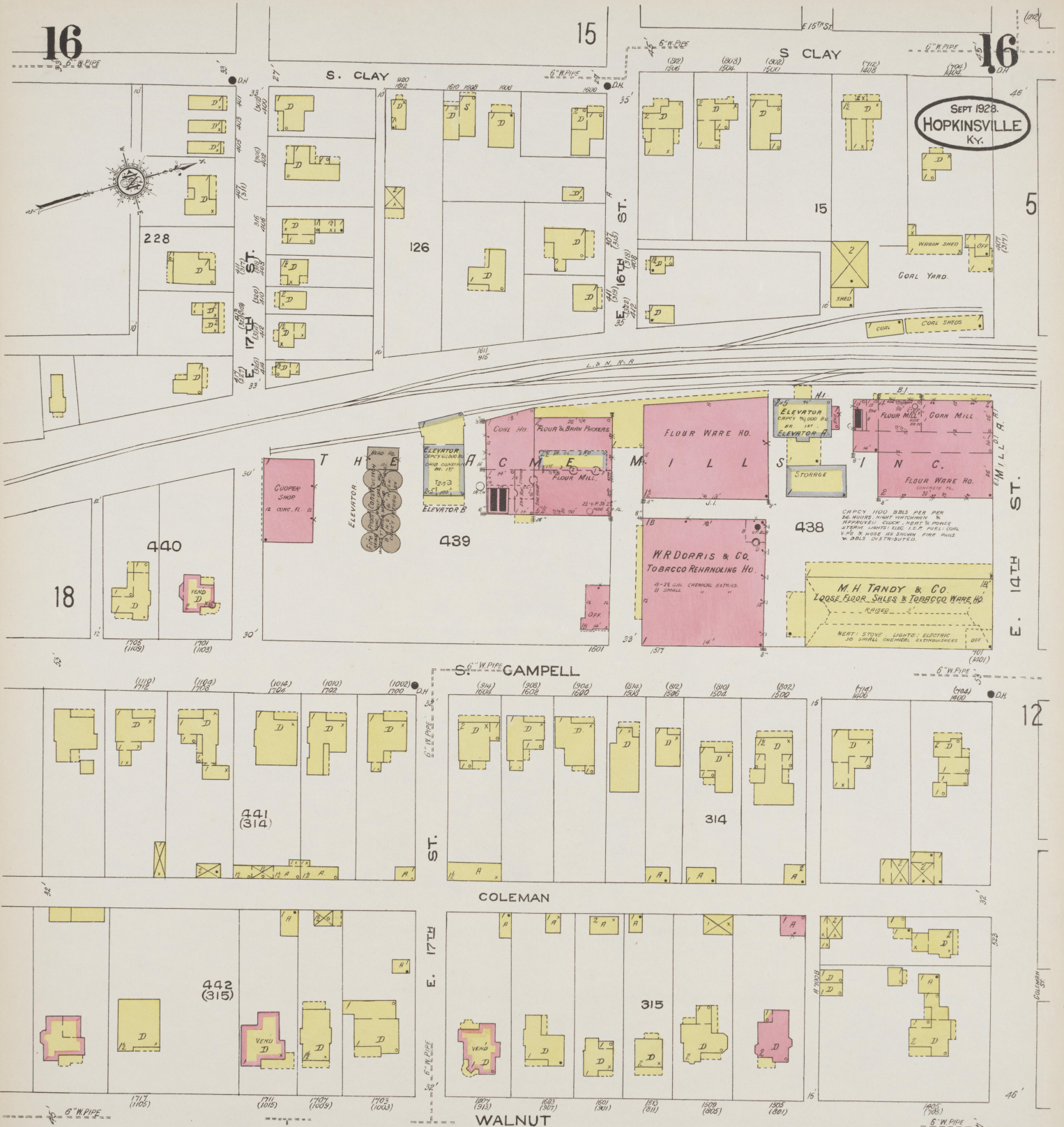
315

27

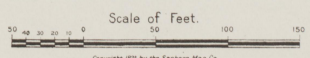


Copyright 1928 by the Seaborn Map Co.

2



SEPT 1923.
HOPKINSVILLE
KY.



17

17

18

18

28

21

20

19

E. 18TH ST.

E. 18TH ST.

TWYMAN SQUARE

E. 19TH ST.

E. 20TH ST.

S. MAIN ST.

S. VIRGINIA ST.

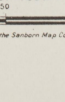
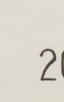
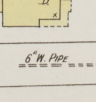
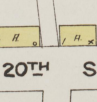
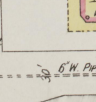
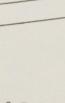
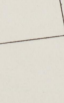
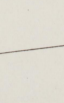
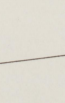
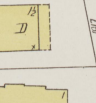
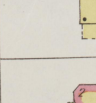
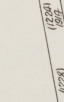
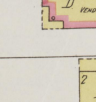
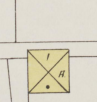
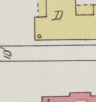
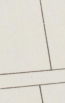
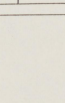
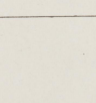
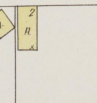
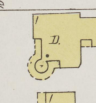
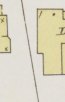
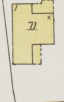
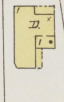
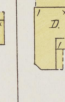
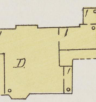
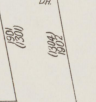
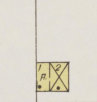
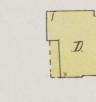
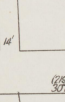
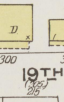
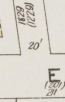
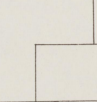
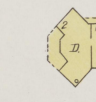
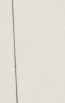
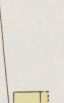
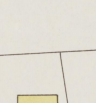
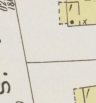
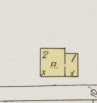
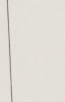
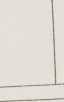
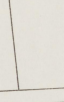
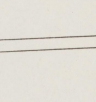
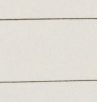
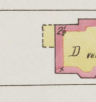
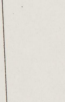
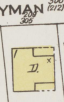
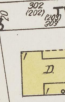
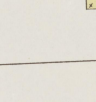
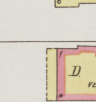
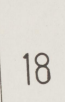
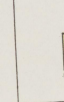
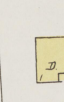
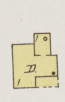
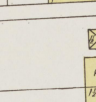
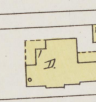
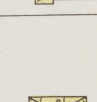
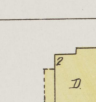
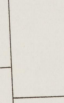
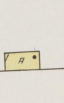
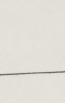
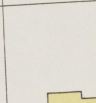
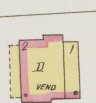
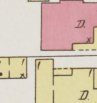
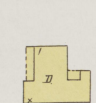
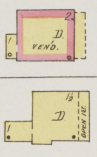
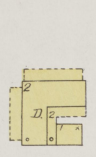
S. CLAY ST.

VIRGINIA PUBLIC SCHOOL

436
(227)

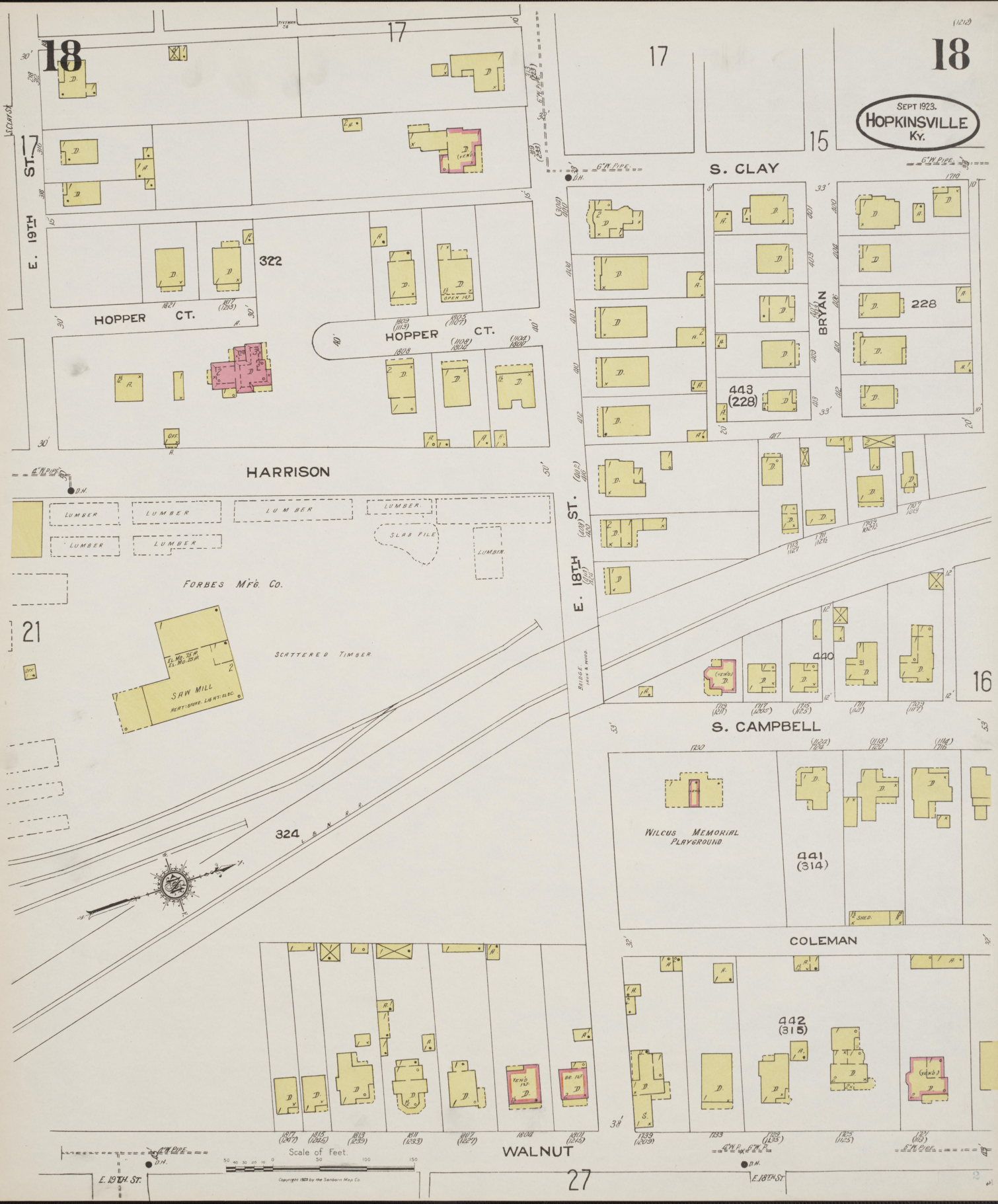
321

322



(1212)

SEPT 1923.
HOPKINSVILLE
Ky.



18

17

17

18

15

S. CLAY

E. 19TH ST.

E. 19TH ST.

HARRISON

E. 18TH ST.

E. 18TH ST.

S. CAMPBELL

16

WILCUS MEMORIAL PLAYGROUND

COLEMAN

WALNUT

27

E. 19TH ST.

E. 18TH ST.

Scale of Feet.

Copyright 1923 by the Sanborn Map Co.

19

28

17 19

SEPT. 1923
HOPKINSVILLE
KY



N O E X P O S U R E



413 (316)

412 (1A)

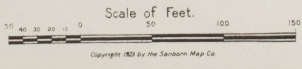
414 (2A)

425

426

(3A)

23



N O E X P O S U R E

20

E. 20TH ST.

17

322

20

SEPT. 1923
HOPKINSVILLE
KY.



E. 20TH ST.

415
(2A)

21

E. 21ST ST.

414
(1A)

S. VIRGINIA

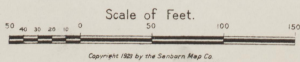
19

416
(3A)

CHESTNUT

ALUMNI AV.

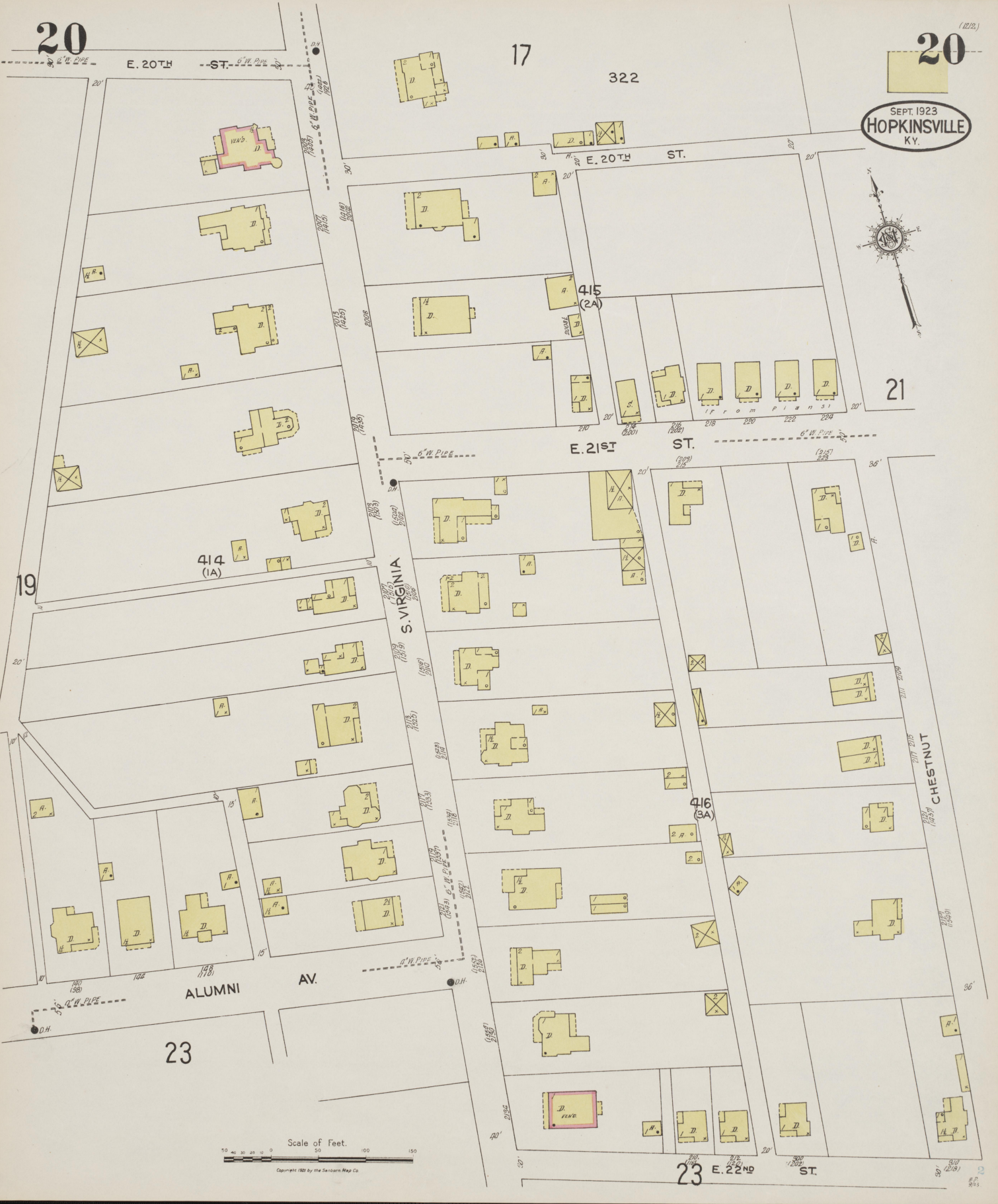
23



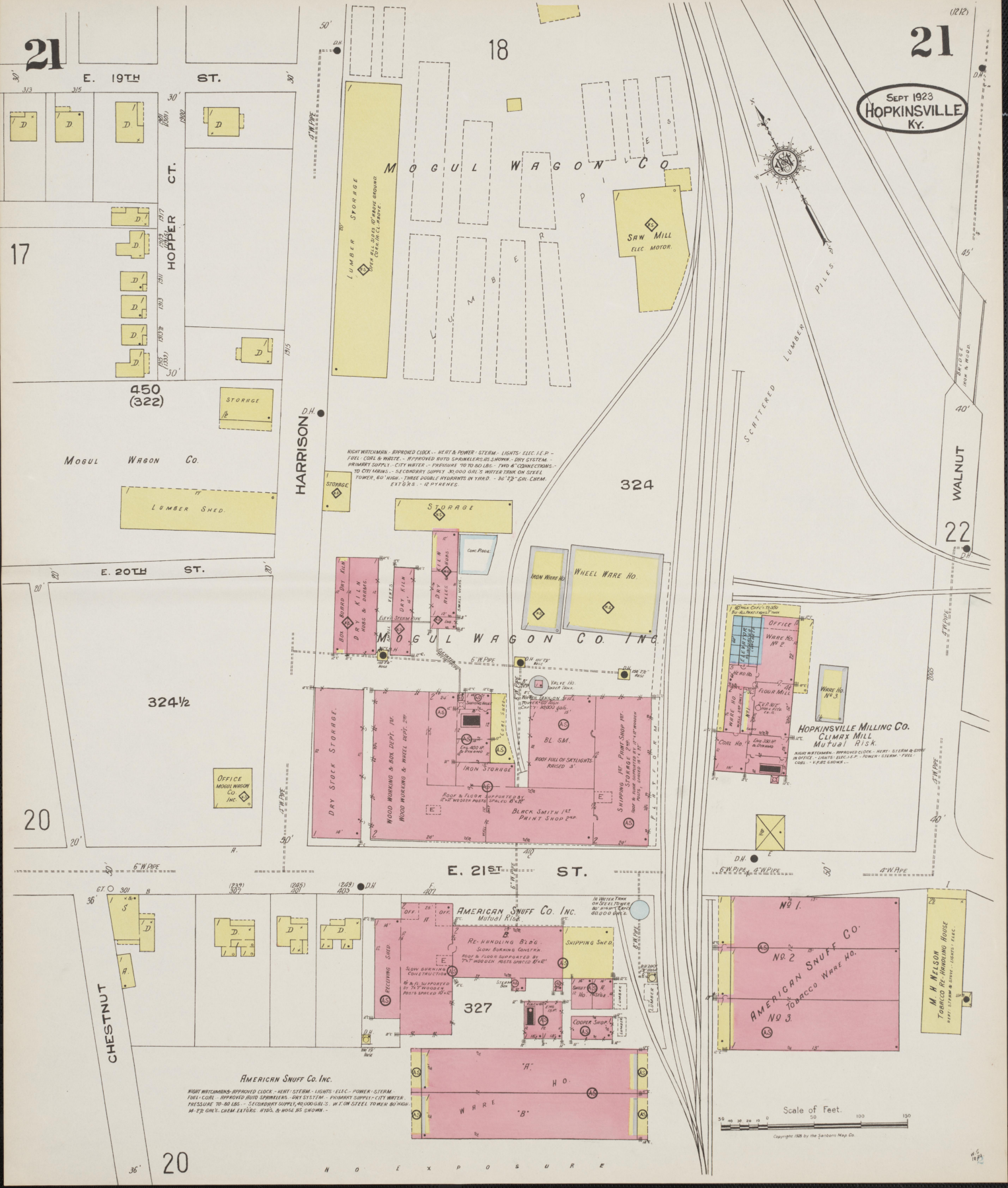
23

E. 22ND ST.

22



SEPT 1923
HOPKINSVILLE
KY.



NIGHT WATCHMAN - APPROVED CLOCK - HEAT & POWER - STEAM - LIGHTS - ELEC. I. E. P. -
FUEL - COAL & WASTE - APPROVED AUTO SPRINKLERS AS SHOWN - DRY SYSTEM -
PRIMARY SUPPLY - CITY WATER - PRESSURE TO TOWER AS - TWO 4" CONNECTIONS -
TO CITY MAINS - SECONDARY SUPPLY 30,000 GAL. WATER TANK ON STEEL
TOWER, 60' HIGH - THREE SOLUBLE HYDRANTS IN YARD - 30" 12" GR. CEM.
EST. 6" S.S. - 42" 4" H.C.

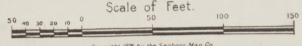
DRY STOCK STORAGE
WOOD WORKING & BOX DEPT. 10'
WOOD WORKING & WHEEL DEPT. 20'
IRON STORAGE
BLACK SMITH 1/2
PRINT SHOP 20'
SHIPPING 10' 1/2
REPAIR SHOP 10'
ROOF FULL OF SKYLIGHTS
RAISED 3'

HOPKINGSVILLE MILLING CO.
CLIMAX MILL
MUTUAL RISK
NIGHT WATCHMAN - APPROVED CLOCK - HEAT - STEAM & DRY
IN OFFICE - SUPPLY - ELEC. I. E. P. - POWER - STEAM - FUEL
COAL - 4" PIPE 6" DIA.

AMERICAN SNUFF CO. INC.
Mutual Risk
RE-HANDLING BLDG.
SLOW BURNING CONSTAT.
ROOF & FLOOR SUPPORTED BY
2" HOLLOW IRON SPOUTS 6" DIA.

AMERICAN SNUFF CO.
TOBACCO WARE HO.
NO. 1
NO. 2
NO. 3
M. H. NELSON
TOBACCO RE-HANDLING HOUSE
HEAT - STEAM & DRY - 10" DIA. 4" S.S.

AMERICAN SNUFF CO. INC.
NIGHT WATCHMAN - APPROVED CLOCK - HEAT - STEAM - LIGHTS - ELEC. - POWER - STEAM
FUEL - COAL - APPROVED AUTO SPRINKLERS - DRY SYSTEM - PRIMARY SUPPLY - CITY WATER
PRESSURE 70-80 LBS. - SECONDARY SUPPLY 30,000 GAL. S. W. T. ON STEEL TOWER 60' HIGH
42" 4" S.S. - 42" 4" H.C. - 4" 1/2" DIA. 4" S.S.



Copyright 1923 by the Standard Map Co.

N O E X P O S U R E

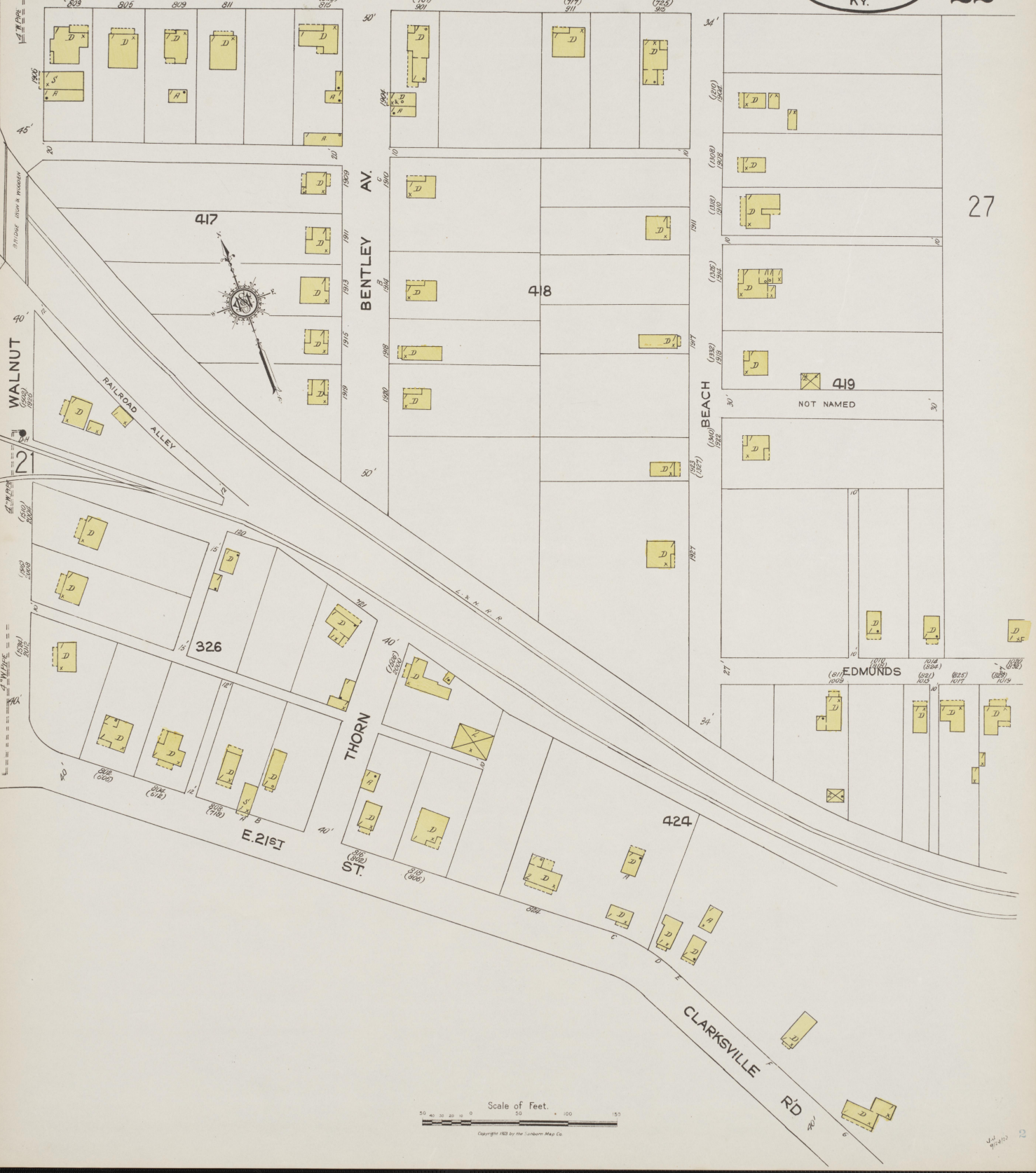
SEPT. 1923
HOPKINSVILLE
KY.

22

E. 19TH 27 ST.

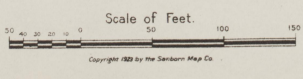
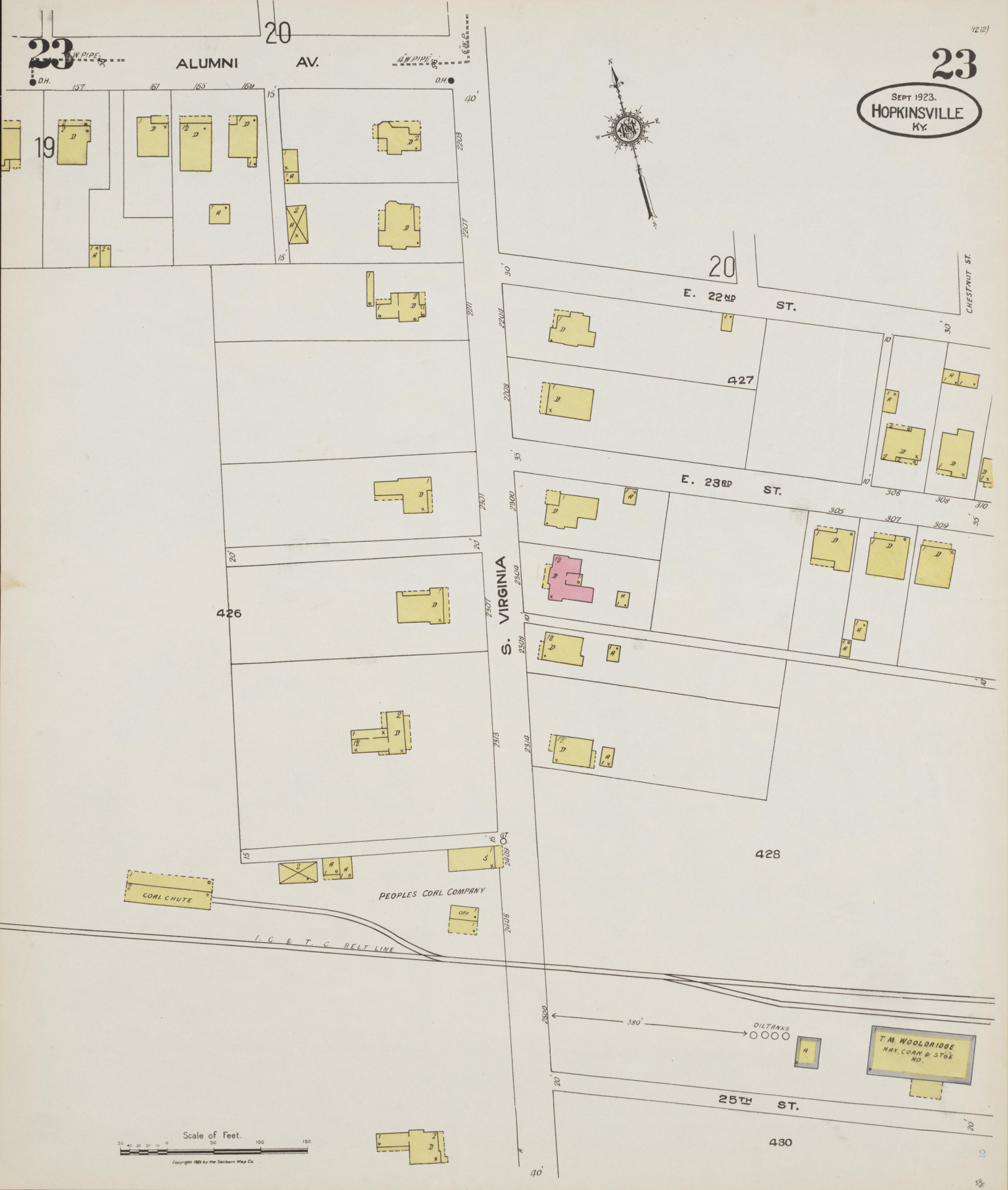
22

27



Scale of Feet.
0 50 100 150
Copyright 1923 by the Columbia Map Co.

J. L. 9/23/23



24

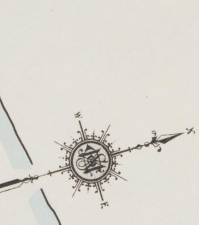
6

N. MAIN

IRON BRIDGE

24

282
TANDY & FAIRLEIGH TOBACCO CO. INC.
 ROCK BRIDGE STEMMERY
 TOBACCO REHANDLING
 BULKING
 PRESS RM.
 ROOF FILL OF STEELWORK
 BULKING
 PRESS RM.
 STEMMERY
 BULKING



R I V E R

102

CRESCENT

7

102

CRESCENT

E. ST.

N. CLAY

348

S. CLAY ST.

8

PERRY

25

346

NOT NAMED

347

MEANS

306

Little

N. MAIN

339

24

24

SEPT 1923.
HOPKINSVILLE
 KY.

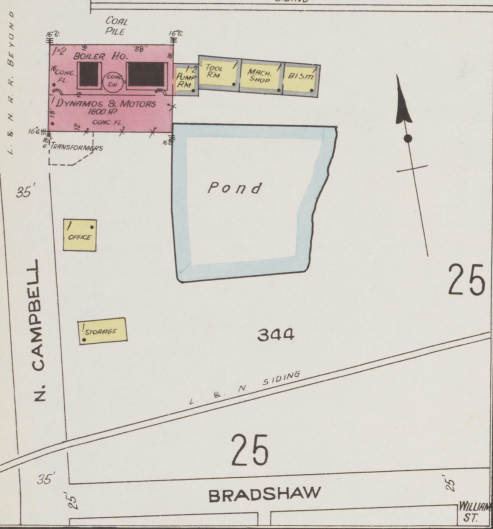
Scale of Feet.
 50 40 30 20 10 0 50 100 150

Copyright 1923 by the Sandborn Map Co.

Little River

KENTUCKY PUBLIC SERVICE CO.
ELECTRIC LIGHT PLANT

MAN ON DUTY DAY & NIGHT.
HEAT & POWER STERNA-LIGHTS.
ELECTRIC FUEL COIL.
4-24 GAL. CHEMICAL TANKS.

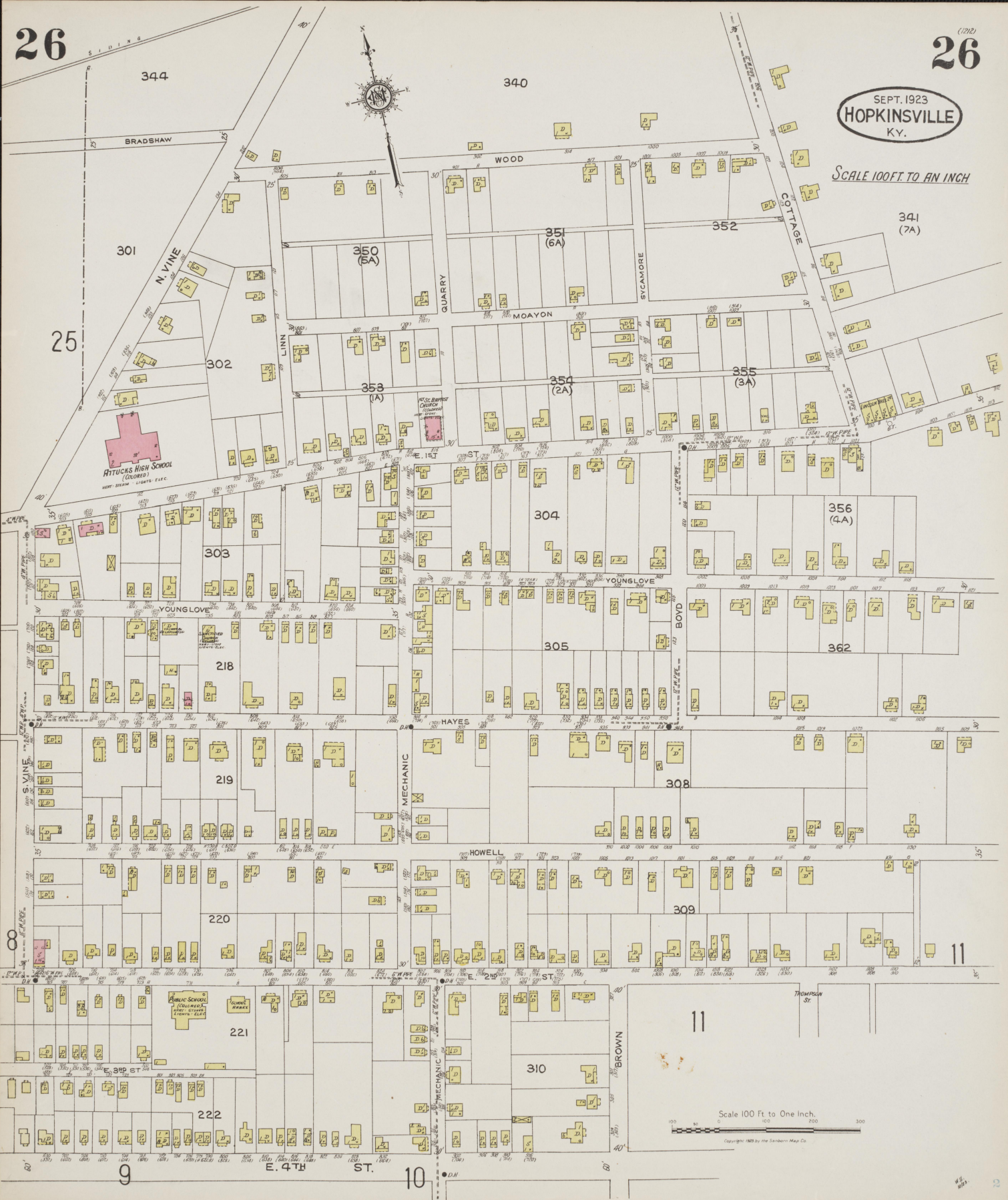


26

26

SEPT. 1923
HOPKINSVILLE
KY.

SCALE 100 FT. TO AN INCH



ATTUCAS HIGH SCHOOL
(COLORED)
WEST SEAM LIGHTS ELEC.

Scale 100 Ft to One Inch
Copyright 1923 by the Sanborn Map Co.

SEPT. 1923
HOPKINSVILLE
KY.

27

SCALE 100 FT. TO AN INCH

389



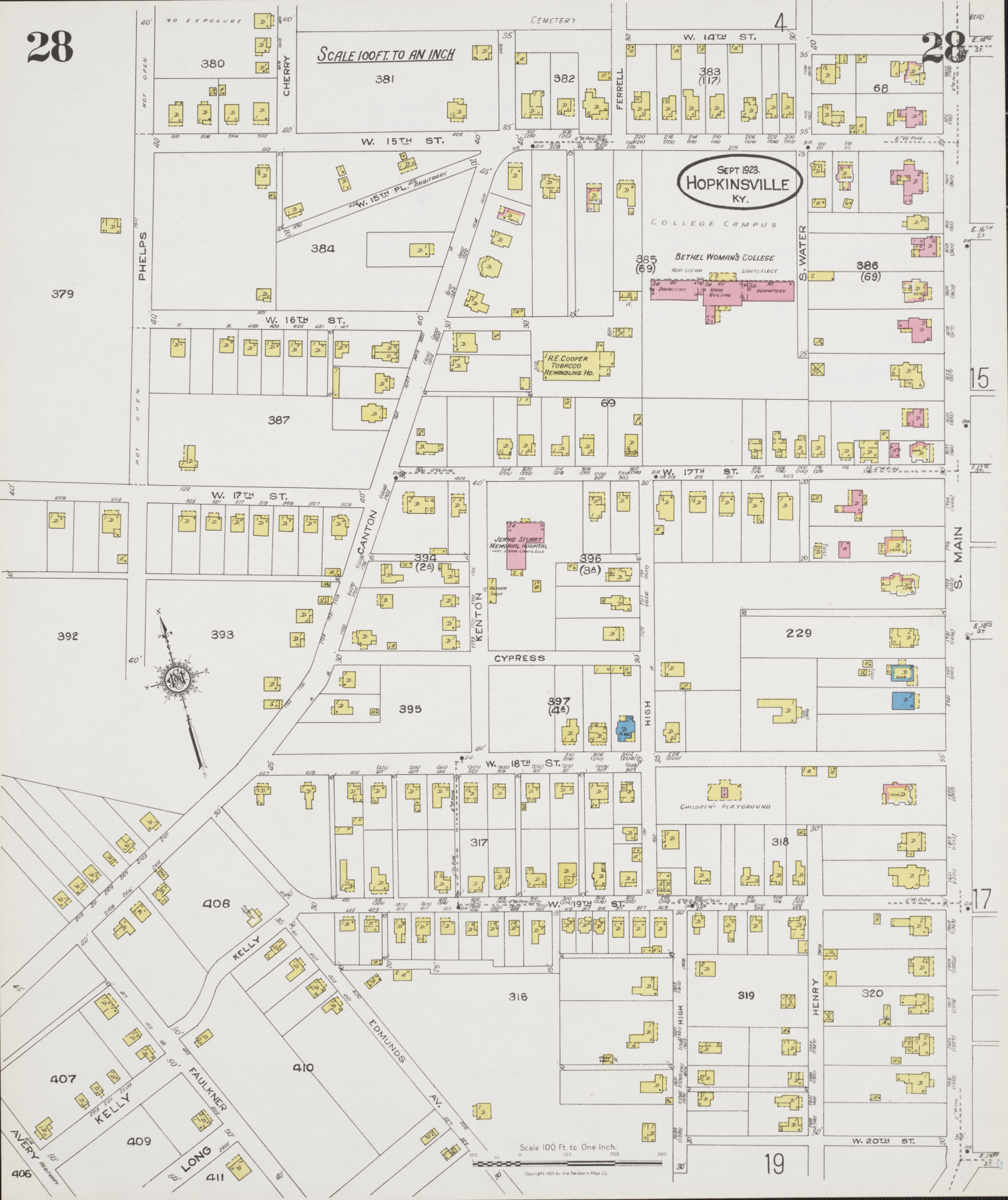
Scale 100 Ft. to One Inch

0 100 200 300

Copyright 1923 by the Sanders Map Co.

SCALE 100 FT. TO AN INCH

SEPT 1923.
HOPKINSVILLE
KY.



Scale 100 Ft. to One Inch.

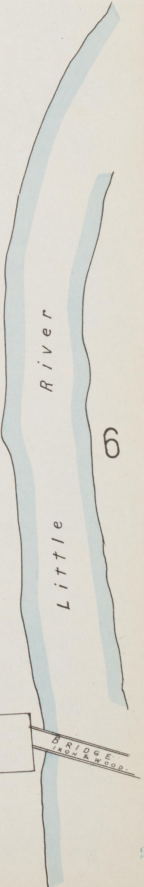
Copyright 1923 by the Searns Map Co.

347

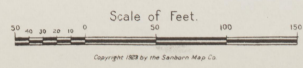


MEANS

306



6



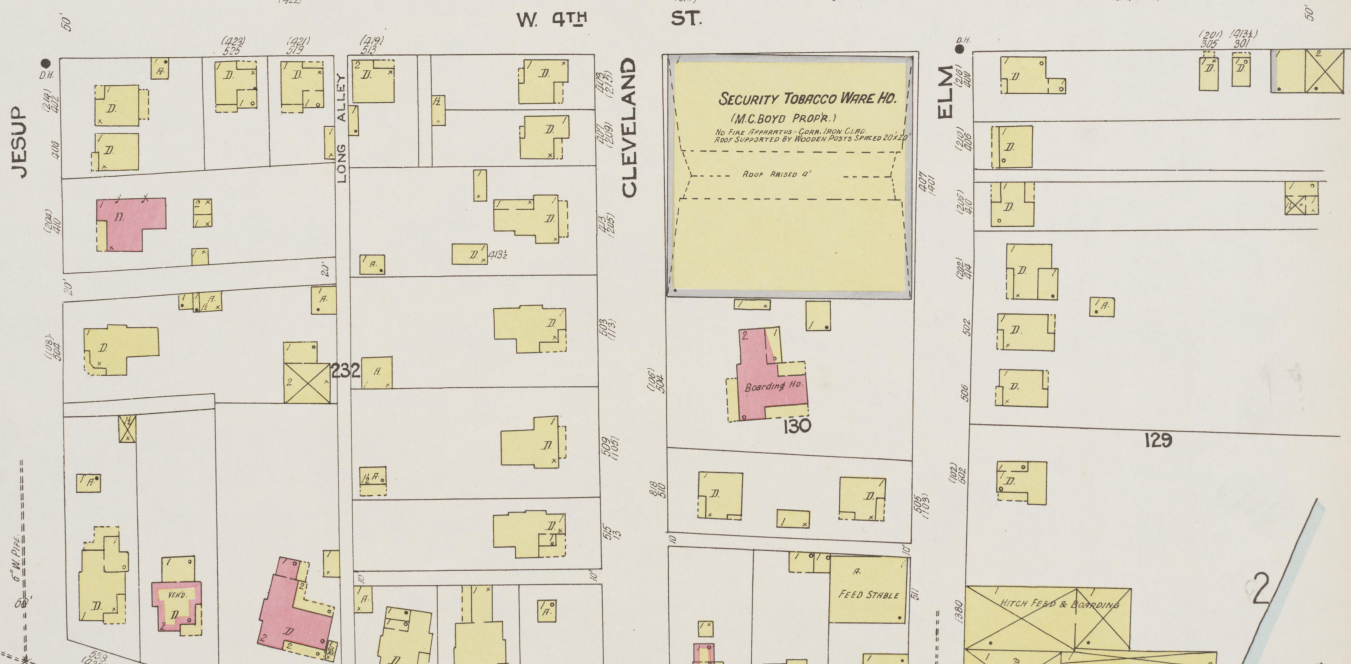
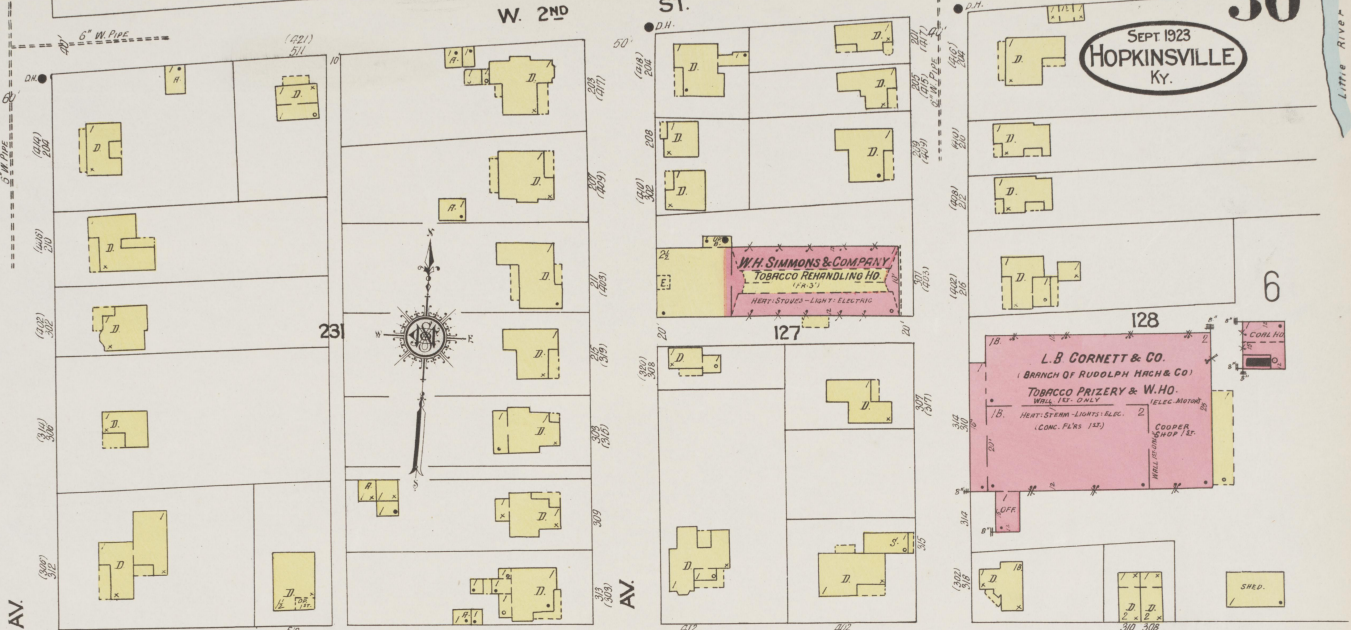
30

30

29

30

SEPT 1923
HOPKINSVILLE
Ky.



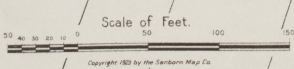
SECURITY TOBACCO WARE HD.
(M.C. BOYD PROPRIETOR)
NO TALL CHIMNEYS - CORR. IRON CLING.
ROOF SUPPORTED BY WOODEN POSTS SPIRED 20' HIG.
ROOF 20' 0" WIDE

Boarding Ho.
130

L.B. CORNETT & CO.
(BRANCH OF RUDOLPH ARNS & CO.)
TOBACCO PRIZERY & W. HD.
WHEEL, FEED, SCALE, ELEC. MOTOR,
HEAT, STEAM, LIGHTS, ELEC. COOPER'S
SHOP, ETC.

UNION AUDITORIUM
VEA D.
HALL, STAGE, LIGHTS, ELECTRIC
STAGE ALL 200' x 30'

HOPKINSVILLE LOOSE FLOOR
TOBACCO PRIZERY & WARE HD.
ON 10' x 10' PAVES



Copyright 1923 by the Sanborn Map Co.

SCALE 100 FT. TO AN INCH



Scale 100 Ft. to One Inch.

Copyright 1923 by the Sanborn Map Co.

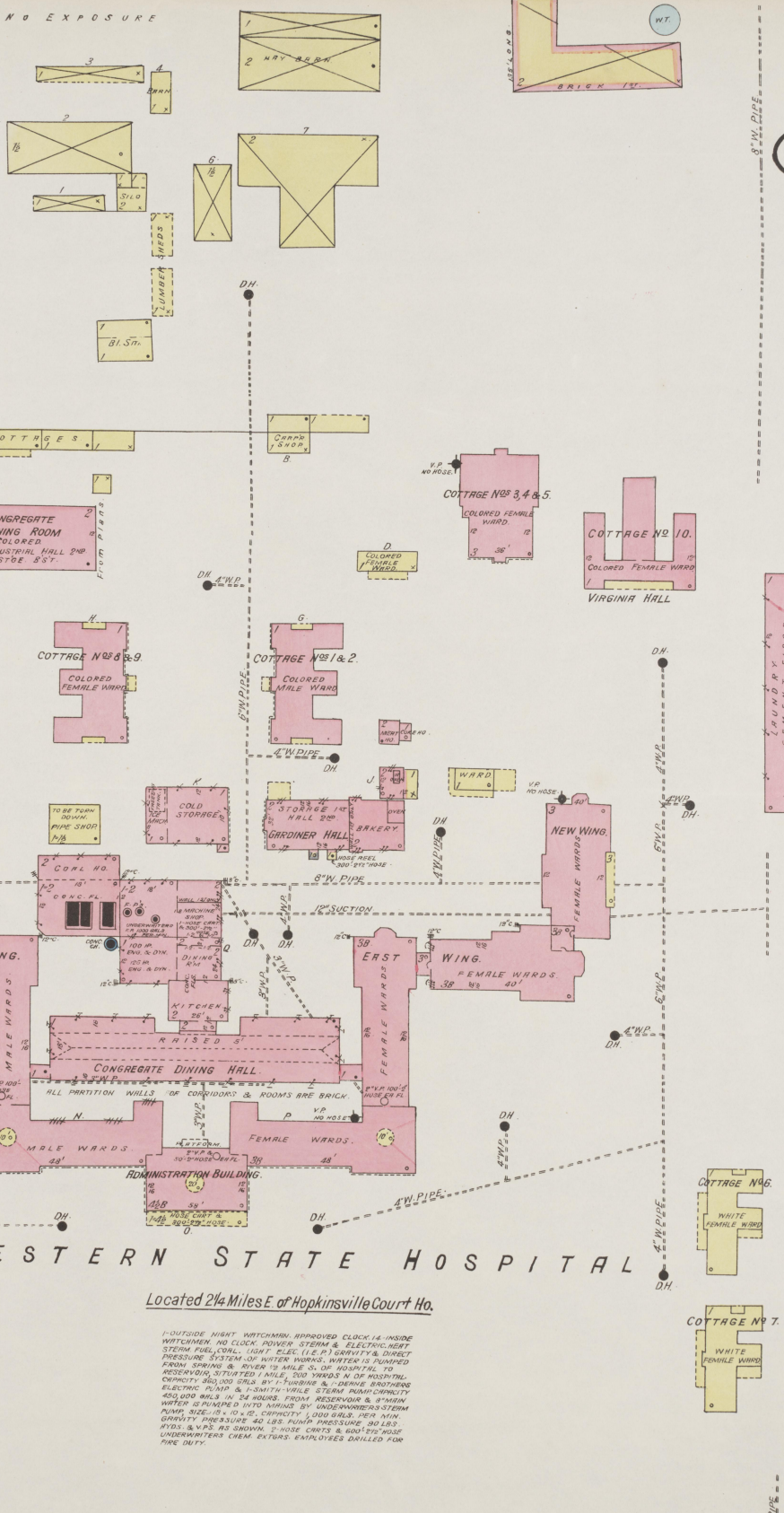
32

32
ELECTRIC
NO. 1
NO. 2
NO. 3

Located 1/2 Mile N.E. of W.S. Hospital.
NO EXPOSURE



NO EXPOSURE



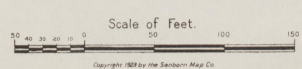
32
SEPT. 1923
HOPKINSVILLE
KY.

33

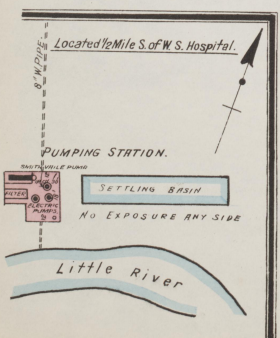
WESTERN STATE HOSPITAL

Located 2 1/4 Miles E. of Hopkinsville Court Ho.

1-OUTSIDE NIGHT WATCHMAN APPROVED CLOCK 14 INSIDE WATCHMAN NO CLOCK POWER STEAM & ELECTRIC HEAT STEAM FUEL OIL. LIGHT ELECT. (110 V) GRAVITY & DIRECT PRESSURE SYSTEM OF WATER WORKS. WATER IS PUMPED FROM SPRING 8.5 MILES TO HOSPITAL. RESERVOIR SITUATED 1 MILE, 200 YARDS N. OF HOSPITAL. CAPACITY 400,000 GALS. BY 1-TURBINE & 1-DIESEL BROTHERS ELECTRIC PUMP & 1-SMITH-VALE STEAM PUMP. CAPACITY 450,000 GALS. IN 24 HOURS. FROM RESERVOIR & STEAM PUMP. SIZE 10" I.D. CAPACITY 1,000 GALS. PER MIN. GRAVITY PRESSURE 40 LBS. PUMP PRESSURE 40 LBS. FIDS. & F.D. AS SHOWN. 2" HOSE CENTS & 800' 2 1/2" HOSE UNDERWRITERS' TEAM. EXTEND EMPLOYEES DUTIED FOR FIRE DUTY.



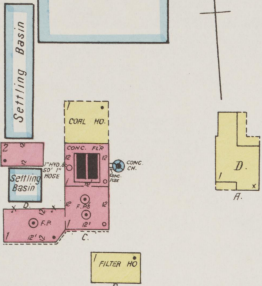
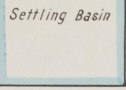
Copyright 1923 by the Sanborn Map Co.



GRASS NO. 1
RUSSELLVILLE ROAD BEYOND

33

Little River



HOPKINSVILLE WATER CO. PUMPING STATION
ENGINEER LIVES ON PREMISES
POWER: STEAM, LIGHT, ELEC, FUEL, COAL, AND AS SHOWN

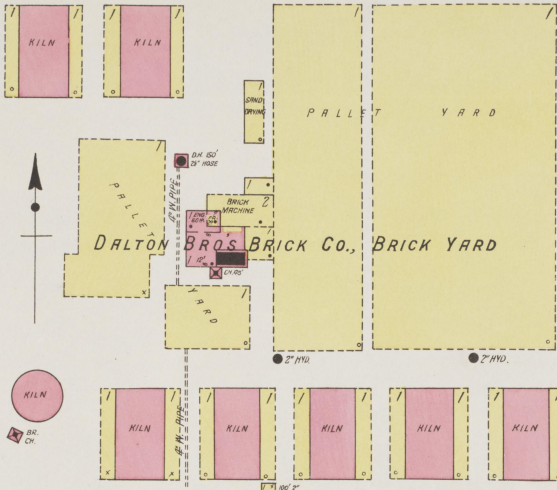
NO EXPOSURE ANY SIDE

SEPT 1923
HOPKINSVILLE
KY.

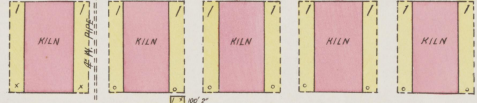
405

RD
NASHVILLE

462



KILN



KILN

KILN

KILN

KILN

KILN

KILN

KILN

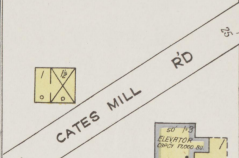
KILN



STGE SHED

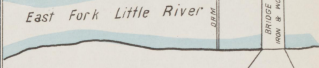
MEN ON DUTY NIGHT & DAY IN SUMMER MONTHS - NO LIGHTS - HEAT STOVE IN OFF. POWER STEAM - FUEL COAL & WOOD - 2" H. S. WITH HOSE INTO AS SHOWN - HEAD 2" H. S. & 100' HOSE AS SHOWN.

NO EXPOSURE ANY SIDE

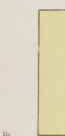


461

CATE MILLING CO. INC.
J. M. NEBLETT, LESSEE



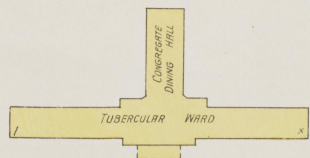
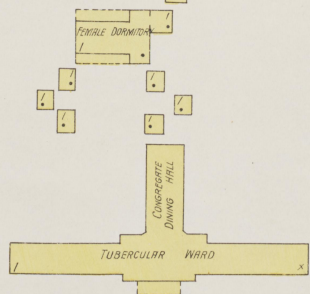
NO EXPOSURE ANY SIDE



32

WESTERN STATE HOSPITAL

See Note on Sheet 32

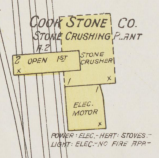


TUBERCULAR WARD

GREEN HO.

GREEN HO.

RUSSELLVILLE ROAD BEYOND



COOK STONE CO. STONE CRUSHING PLANT

POWER: ELEC - WPT STONES - LIGHT ELEC - NO FUEL SHOWN

NO EXPOSURE ANY SIDE

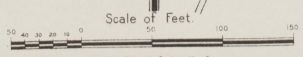


COOK STONE CO.

R. P. SUBMER



COOK STONE CO.



NO EXPOSURE ANY SIDE

Copyright 1923 by the Sanborn Map Co.