

MIDDLESBOROUGH

BELL COUNTY
KENTUCKY

POPULATION 4000
Prevailing Winds - North & No West

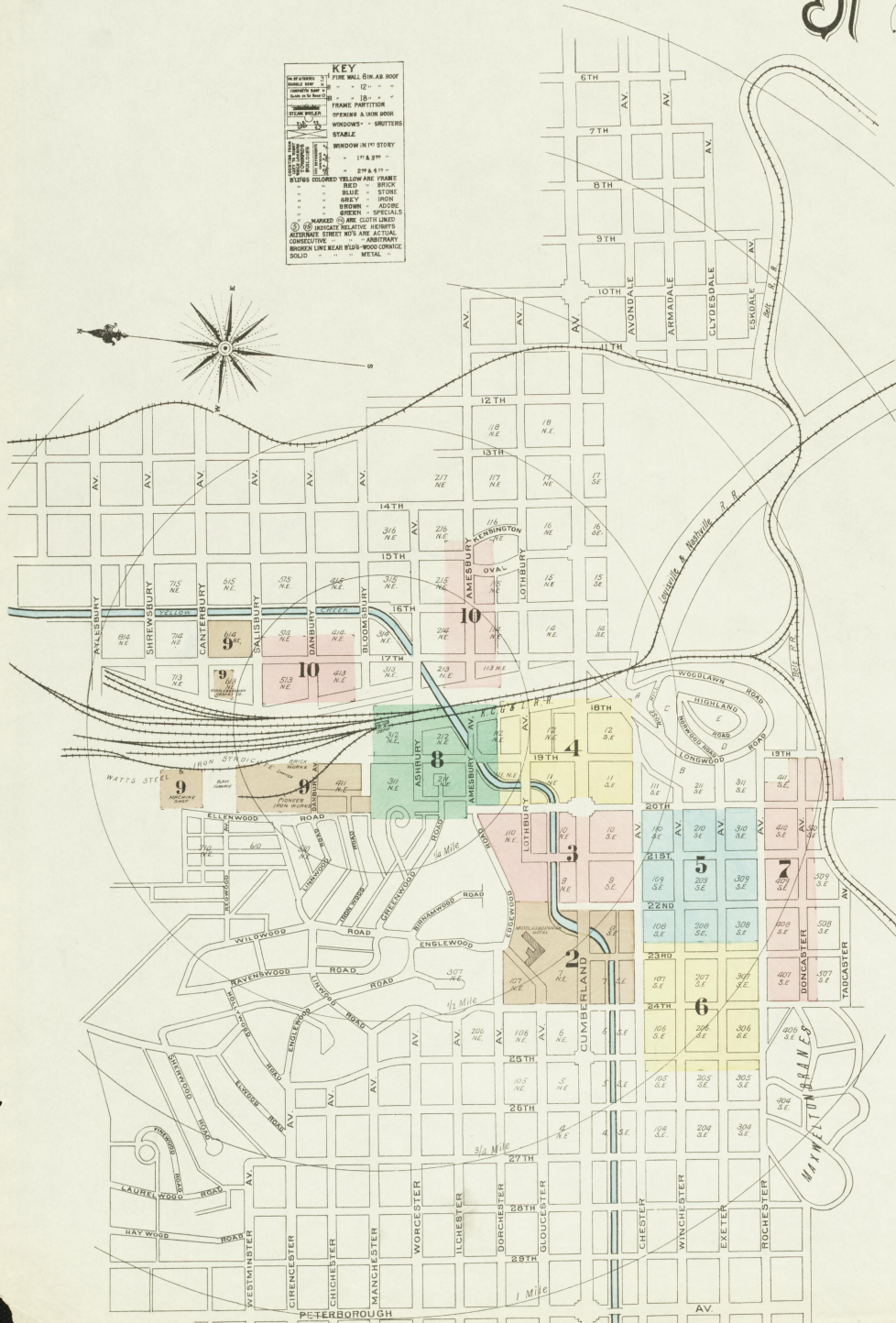
WATER FACILITIES
The Middlesborough Water Co. Gravity System Storage reservoir supplied by Mountain Streams, located 1 1/2 Miles South of city at an elevation of 270 ft above same. Iron Stand Pipe, located 1 Mile South of city, 37 ft high, 15 ft diam, with capacity of 1 Million Gallons. Supplied from Pumping Station equipped with 1 Edwig P. Allison & Co's Duplex Pumping engine of 5 Million Gals capacity per 24 hours. 1 1/2 Miles of W. Pipes, Diam. 4, 8, 10, 12 & 20. 50 Double Hydrants. Average Pressure 110 lbs per sq. inch. Street Mains to be extended and additional Hydrants placed.

FIRE DEPARTMENT
1 Steam Fire Engine, 1 Chemical Engine, 1 Hose Cart and about 1800 ft of Hose. To have 1 Hook & Ladder Truck and an Independent Hose Co. to be organized.

SANBORN-PERRIS
MAP CO. LIMITED
117 BROADWAY, NEW YORK
SCALE 50 FT TO AN INCH
June 1891

Copyright 1891 by the Sanborn-Perris Map Co. Limited

KEY	
1" 2" 3" 4" 6" 8" 10" 12" 14" 16" 18" 20" 22" 24" 26" 28" 30" 32" 34" 36" 38" 40" 42" 44" 46" 48" 50"	1" FINE WALL 3/4" 10" 16" ROOF 2" 12" 18" 24" 30" 36" 42" 48" 54" 60" 66" 72" 78" 84" 90" 96" 102" 108" 114" 120" 126" 132" 138" 144" 150"
1" 2" 3" 4" 6" 8" 10" 12" 14" 16" 18" 20" 22" 24" 26" 28" 30" 32" 34" 36" 38" 40" 42" 44" 46" 48" 50"	1" 2" 3" 4" 6" 8" 10" 12" 14" 16" 18" 20" 22" 24" 26" 28" 30" 32" 34" 36" 38" 40" 42" 44" 46" 48" 50"
1" 2" 3" 4" 6" 8" 10" 12" 14" 16" 18" 20" 22" 24" 26" 28" 30" 32" 34" 36" 38" 40" 42" 44" 46" 48" 50"	1" 2" 3" 4" 6" 8" 10" 12" 14" 16" 18" 20" 22" 24" 26" 28" 30" 32" 34" 36" 38" 40" 42" 44" 46" 48" 50"
1" 2" 3" 4" 6" 8" 10" 12" 14" 16" 18" 20" 22" 24" 26" 28" 30" 32" 34" 36" 38" 40" 42" 44" 46" 48" 50"	1" 2" 3" 4" 6" 8" 10" 12" 14" 16" 18" 20" 22" 24" 26" 28" 30" 32" 34" 36" 38" 40" 42" 44" 46" 48" 50"
1" 2" 3" 4" 6" 8" 10" 12" 14" 16" 18" 20" 22" 24" 26" 28" 30" 32" 34" 36" 38" 40" 42" 44" 46" 48" 50"	1" 2" 3" 4" 6" 8" 10" 12" 14" 16" 18" 20" 22" 24" 26" 28" 30" 32" 34" 36" 38" 40" 42" 44" 46" 48" 50"



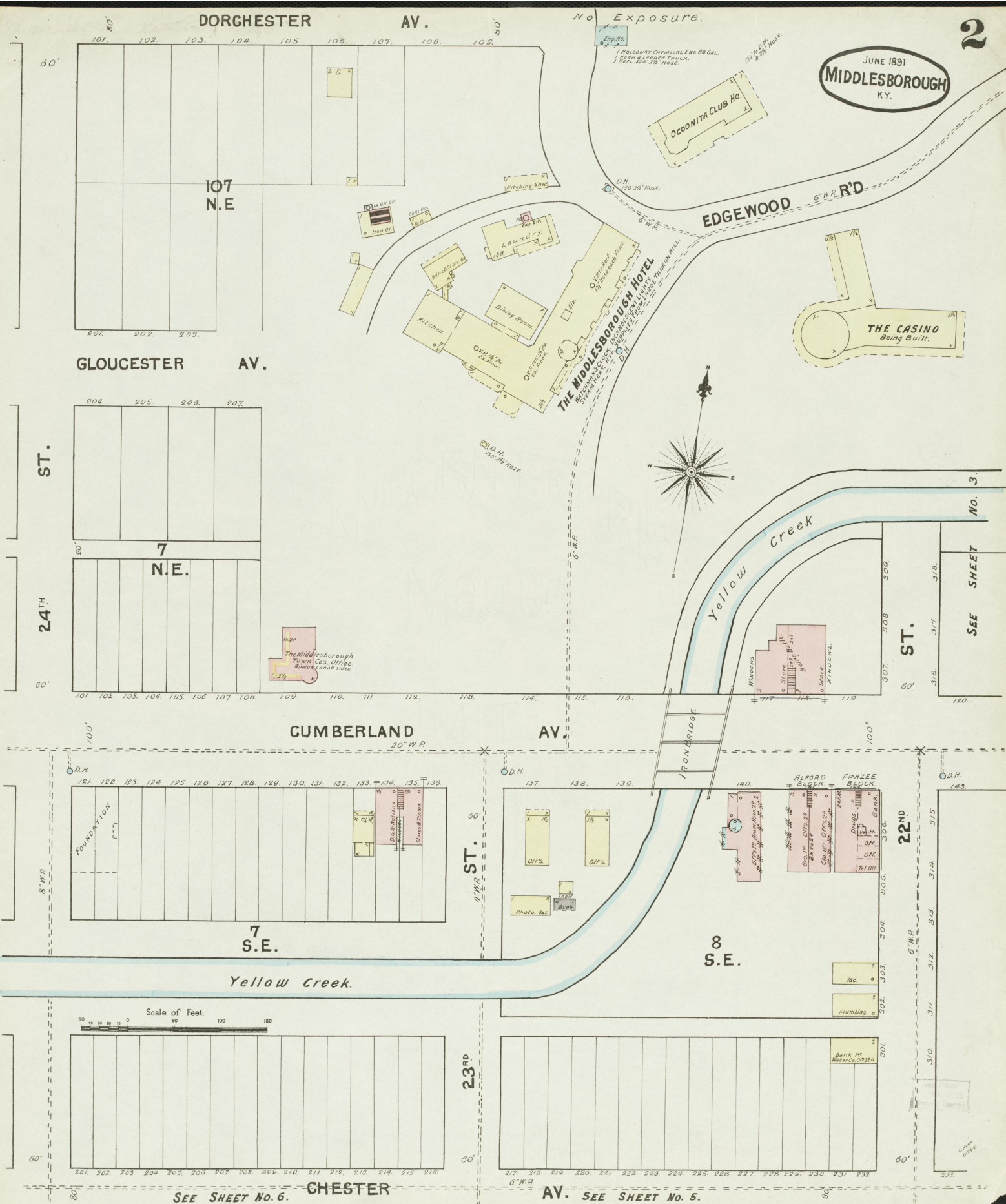
INDEX.

STREETS.		W		SPECIALS.	
Amsbury Ave.	15th to 18th	Winchester Ave.	20th to 23rd		
"	"	"	23rd to 25th		
Ashbury	"				
C		A		B	
Casterbury Ave., South Side	16th to 17th	Alford Block		Baptist Church	
Center Ave., North Side	18th to 20th	Antique, The		" Colored	
"	20th to 22nd	Archie, The		Belt Line Plating Co.	
"	22nd to 24th	Archer Block		Black Diamond Fuel Co.	
"	24th to 26th	Ashbury, The			
"	26th to 28th				
Cumberland Ave.	18th to 20th				
"	20th to 22nd				
"	22nd to 24th				
D		C		E	
Danbury Ave.	near 17th	California Hotel		Exeter, The	
"	Ellenwood Road	Carlie Hotel		Exhibition Hall & Library	
Doncaster Ave.	"	Cassio, The		Fraser Block	
Dorchester	E. of 24th	City Steam Laundry		"	
		Corbett Hotel		K. C. G. & L. R. R. Depot	
		Cumberland, The		L. & N. R. R. Pass. Station	
E		E		M	
Edgewood Road	20th to 22nd	Exeter, The		Mansion House	
"	22nd to 23rd	Exhibition Hall & Library		Methodist Episcopal Church	
Eighteenth	near Cumberland Ave.			Middlesborough Bottling Co.	
Ellenwood Road	20th to 23rd			Oaket Co.	
Exeter	20th to 23rd			" Electr. L. H. & F. Co. (New)	
"	23rd to 25th			" Furniture Co.	
"	25th to 27th			" Hotel	
F		F		N	
Fifteenth	near Amsbury Ave.	K. C. G. & L. R. R. Depot		News Building & Printing	
"	near Amsbury Ave.	L. & N. R. R. Pass. Station		Oonitsa Boat Club House	
Gloucester Ave.	E. of 24th			Opera House	
K		L		P	
Kenington Oval	10th to 12th	Mansion House		Park Palace Hotel	
Lothbury Ave.	18th to 20th	Methodist Episcopal Church		Plaxita Hotel	
"	20th to 21st	Middlesborough Bottling Co.		Pioneer Iron Works	
		Oaket Co.		Presbyterian Church	
		" Electr. L. H. & F. Co. (New)		Public School	
		" Furniture Co.		"	
		" Hotel		Schank, D. M. Lumber Co.	
		" Lumber Co.		Shuster, Mitchell & Co. Planing Mill	
		" Novelty Wood Works Co.		Standard Handle Works	
		" Pattern Works		"	
L		M		T	
Lothbury Ave.	18th to 20th	Mansion House		Turner & Calhoun, Carpenters	
"	20th to 21st	Methodist Episcopal Church		Tyler Hotel	
		Middlesborough Bottling Co.		"	
		Oaket Co.			
		" Electr. L. H. & F. Co. (New)			
		" Furniture Co.			
		" Hotel			
		" Lumber Co.			
		" Novelty Wood Works Co.			
		" Pattern Works			
N		N		W	
Nineteenth	near Doncaster Ave.	News Building & Printing		Watts Steel & Iron Synalates	
"	Center to Lothbury Ave.	Oonitsa Boat Club House			
"	Ellenwood Road	Opera House			
"	S. of Amsbury to Bloomersbury Ave.				
Rochester Ave., North Side	20th to 23rd				
"	23rd to 25th				
"	25th to 27th				
"	27th to 29th				
R		O		T	
Rochester Ave., North Side	20th to 23rd	Oonitsa Boat Club House		Turner & Calhoun, Carpenters	
"	23rd to 25th	Opera House		Tyler Hotel	
"	25th to 27th			"	
"	27th to 29th				
S		P		W	
Salisbury Ave., North Side	16th to 17th	Park Palace Hotel		Watts Steel & Iron Synalates	
"	South	Plaxita Hotel			
"	near 17th	Pioneer Iron Works			
"	near Amsbury	Presbyterian Church			
"	Bloomersbury to Salisbury Ave.	Public School			
"	Salisbury to Centerbury Ave.	"			
"	near Amsbury Ave.	Schank, D. M. Lumber Co.			
		Shuster, Mitchell & Co. Planing Mill			
		Standard Handle Works			
		"			
		Turner & Calhoun, Carpenters			
		Tyler Hotel			
		"			
		Watts Steel & Iron Synalates			

* Indicates only one side of Street shown.

Sanborn-Perris Map Co.
NEW YORK

JUNE 1891
MIDDLESBOROUGH
KY.



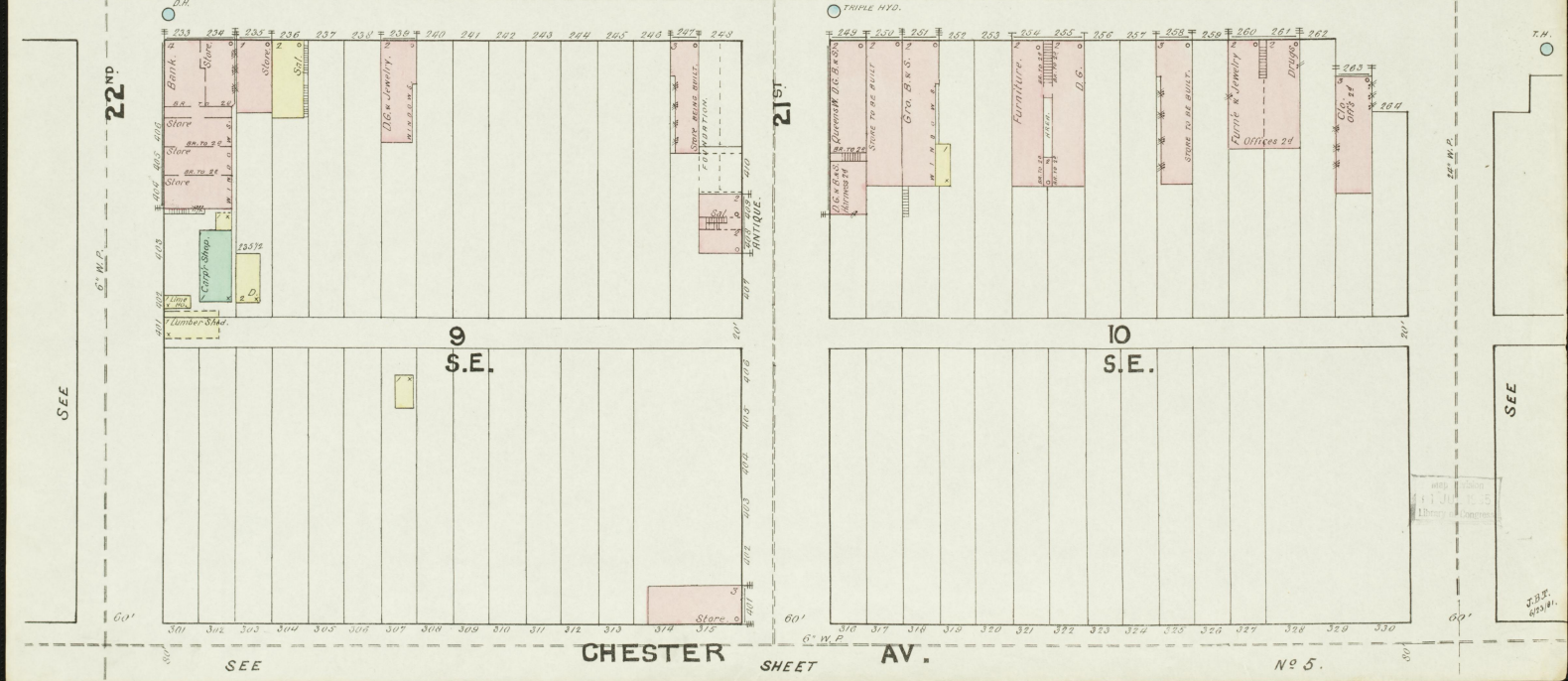
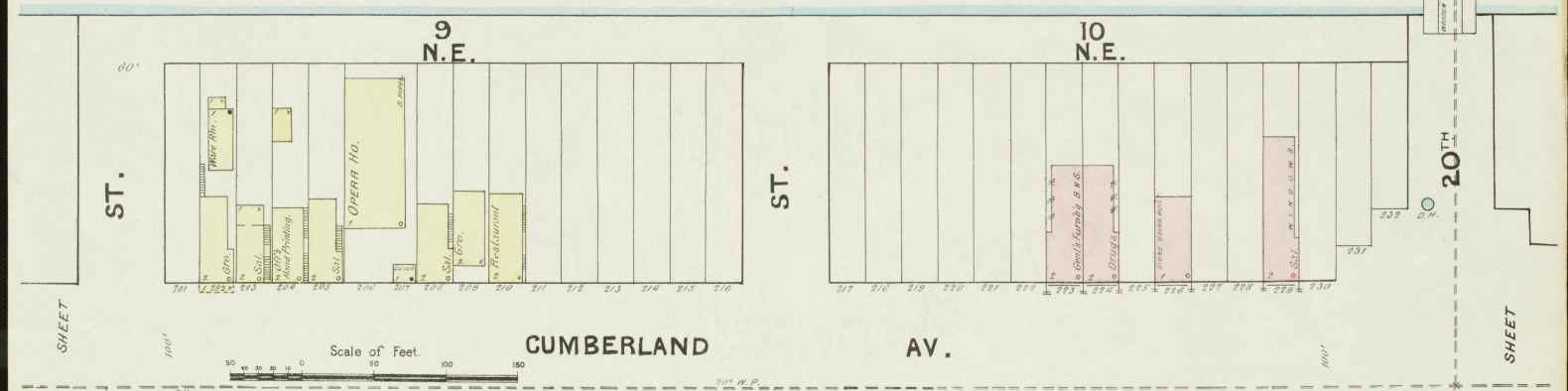
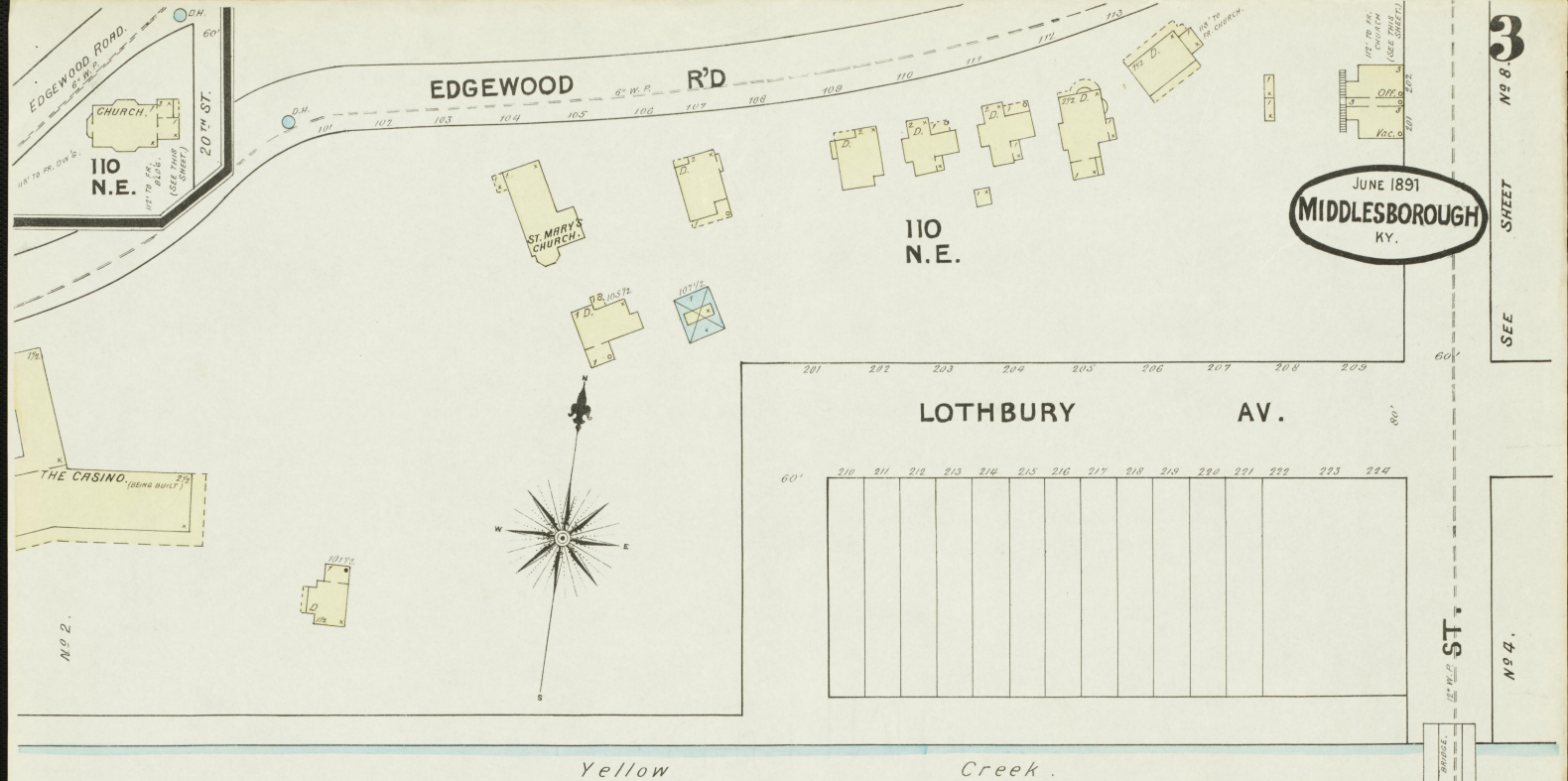
SEE SHEET No. 6.

SEE SHEET No. 5.

SEE SHEET No. 3.

JUNE 1891
MIDDLESBOROUGH
 KY.

SHEET
 No 8



SHEET
 No 9.

SHEET

SEE

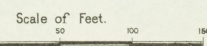
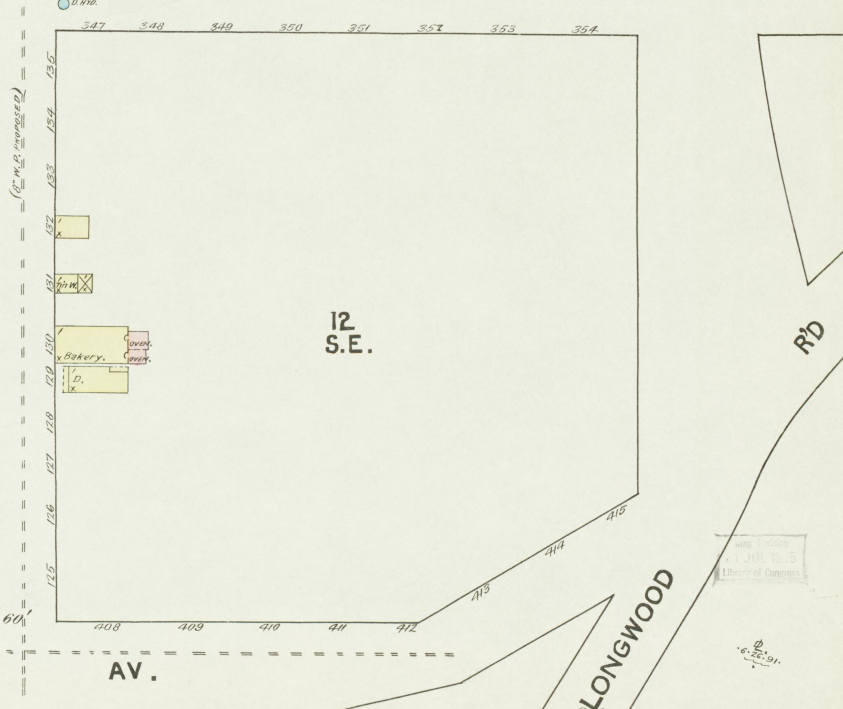
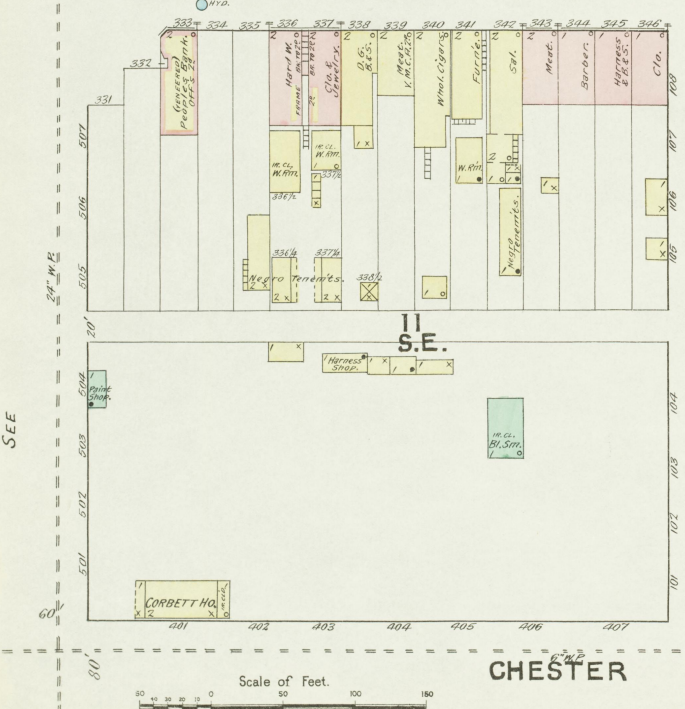
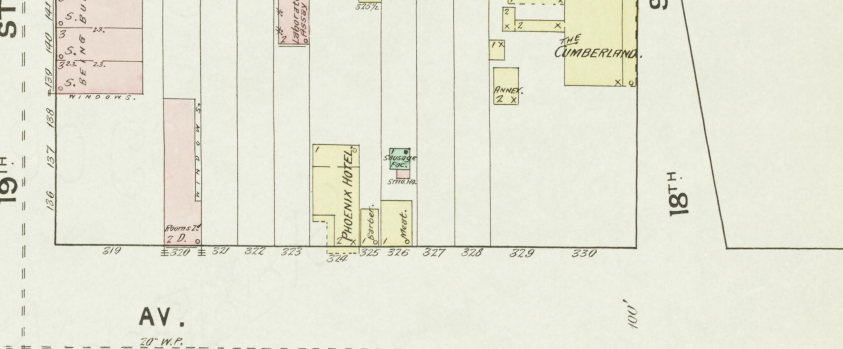
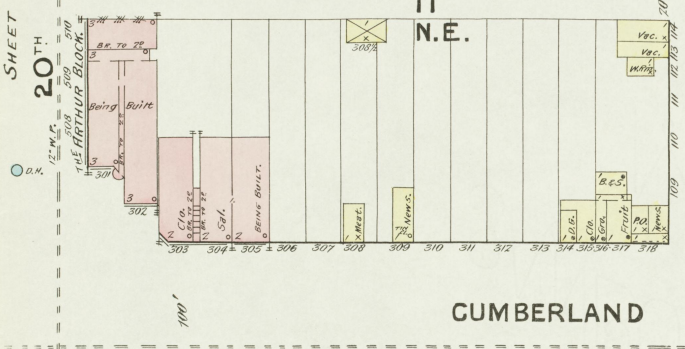
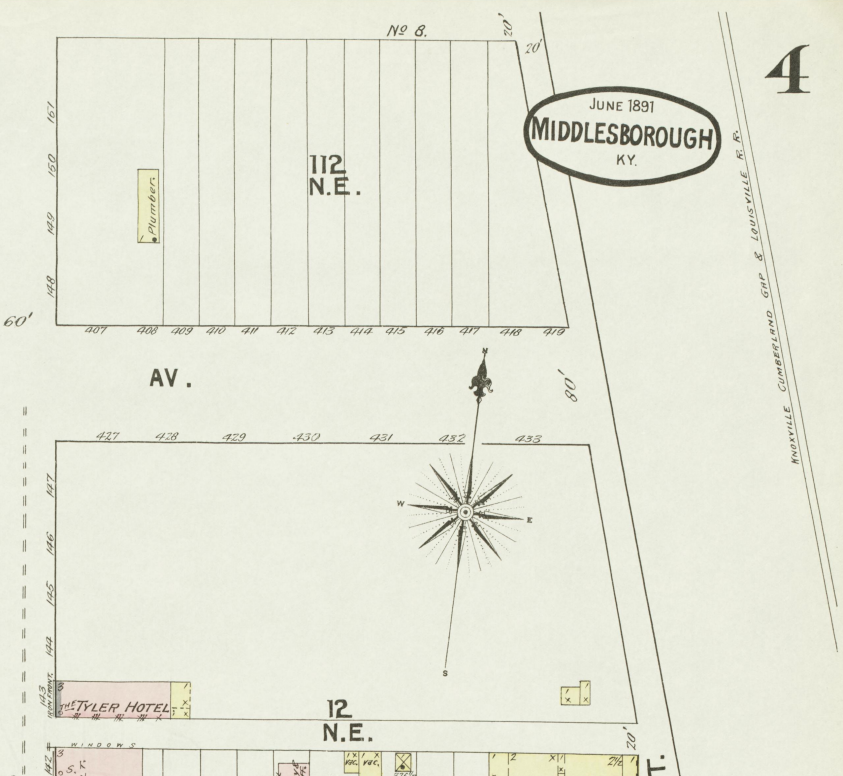
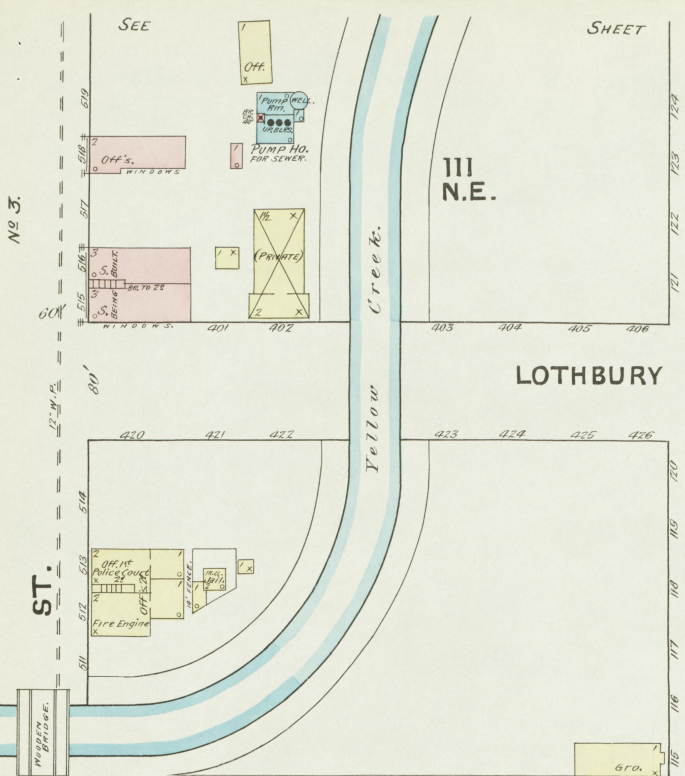
SHEET
 No 5.

SHEET

SEE

JUNE 1891
MIDDLESBOROUGH
KY.

KNOXVILLE CUMBERLAND CINCINNATI & LOUISVILLE R.R.



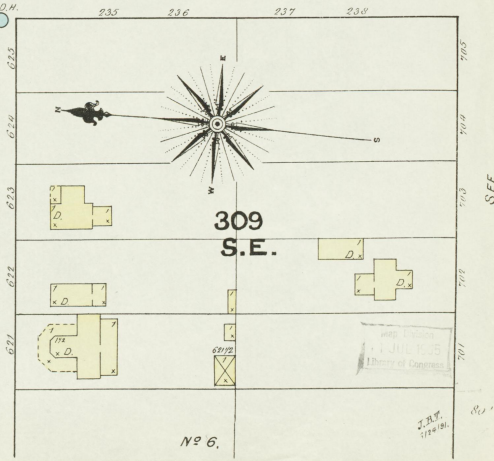
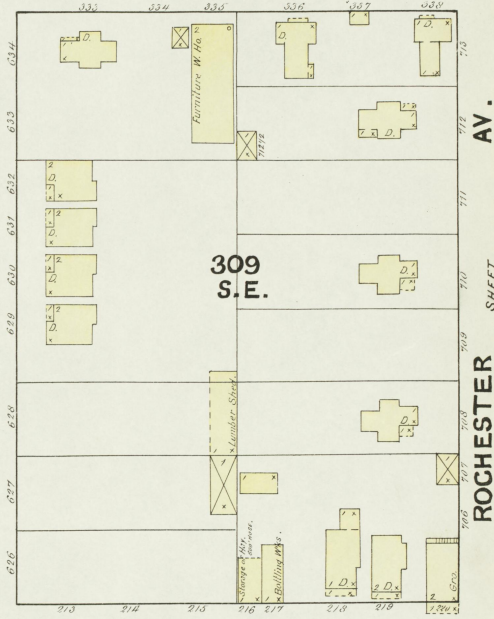
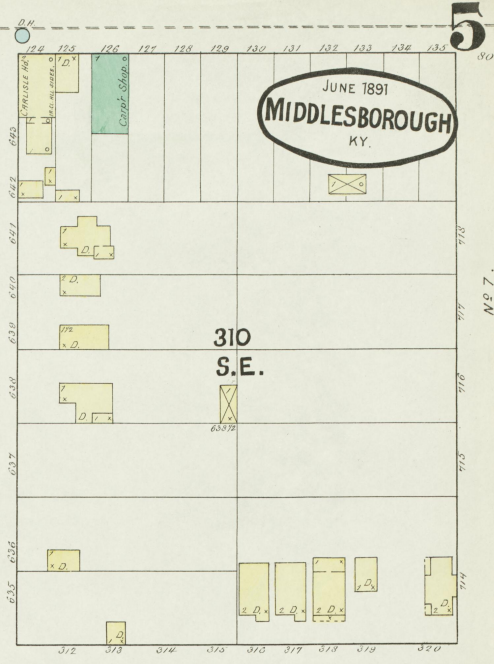
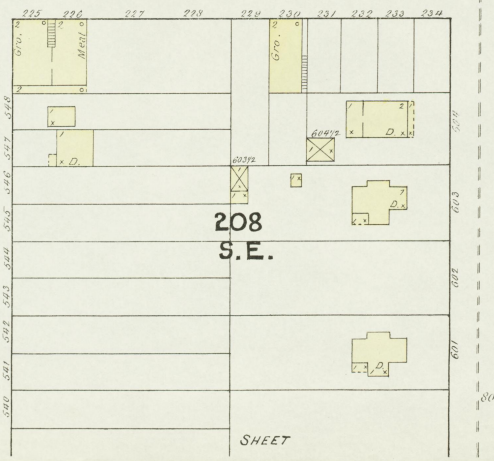
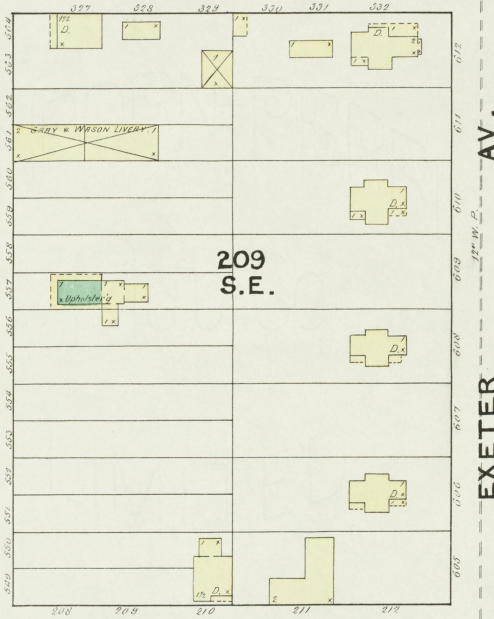
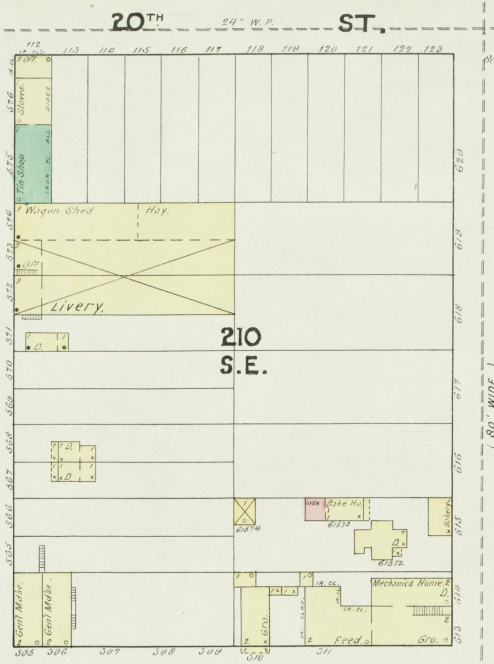
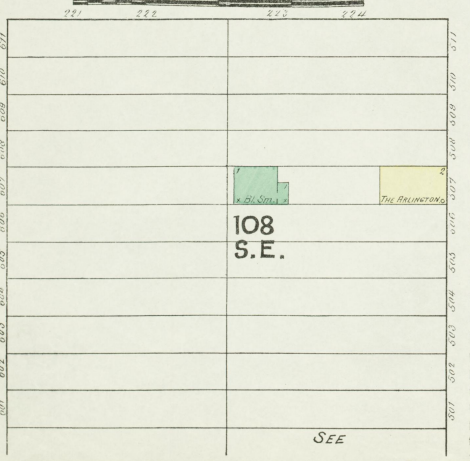
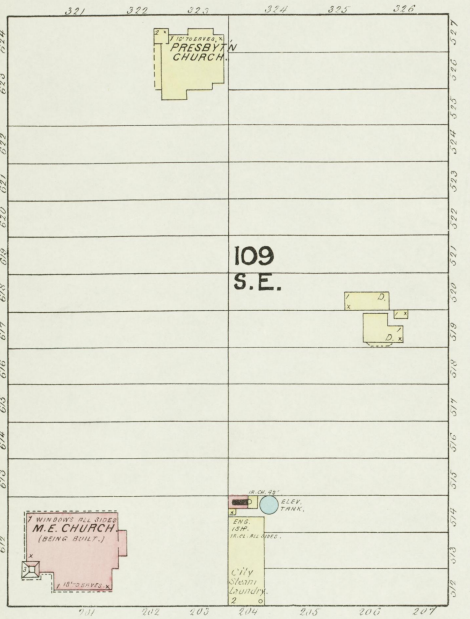
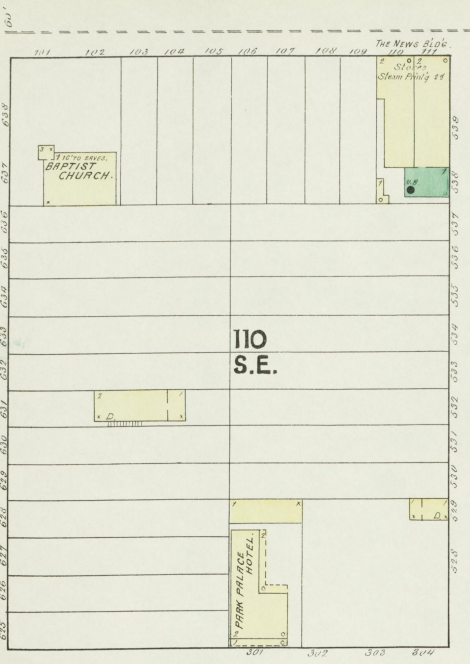
W.B. Fisher
JUN 18 91
City of Middlesborough

SEE SHEET NO. 3

CHESTER AV.

SEE SHEET NO. 2

SEE



5

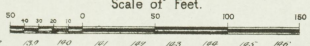
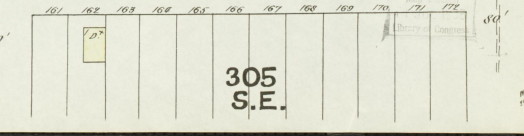
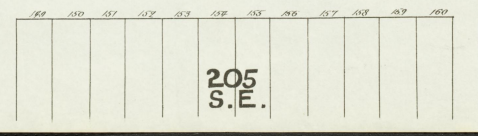
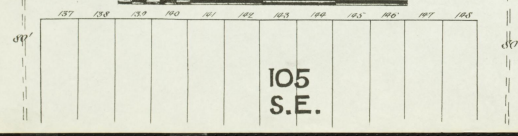
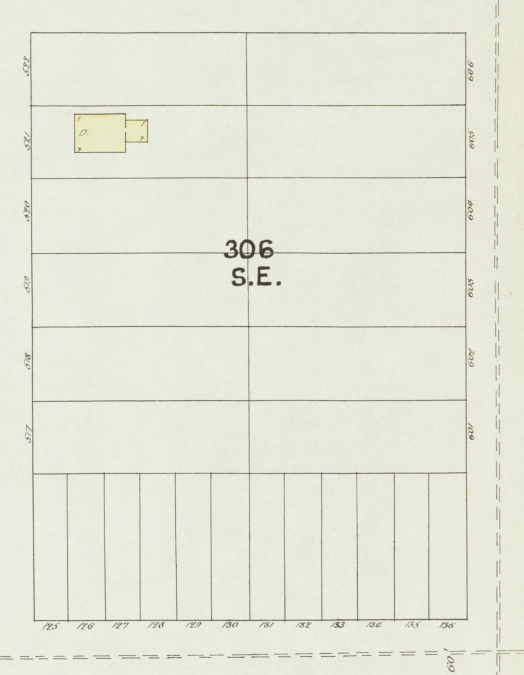
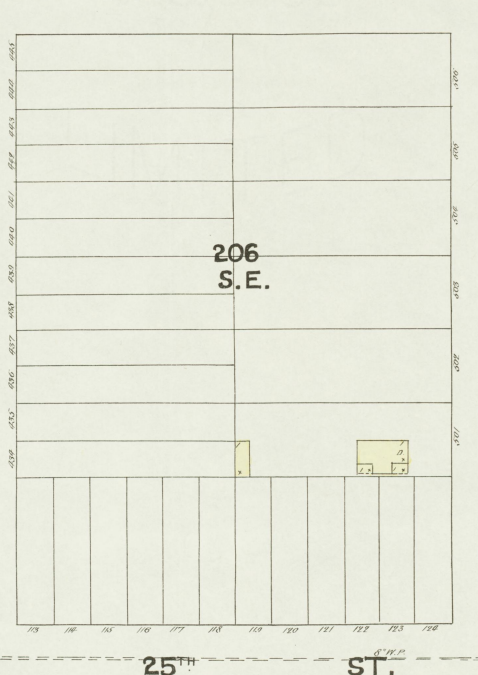
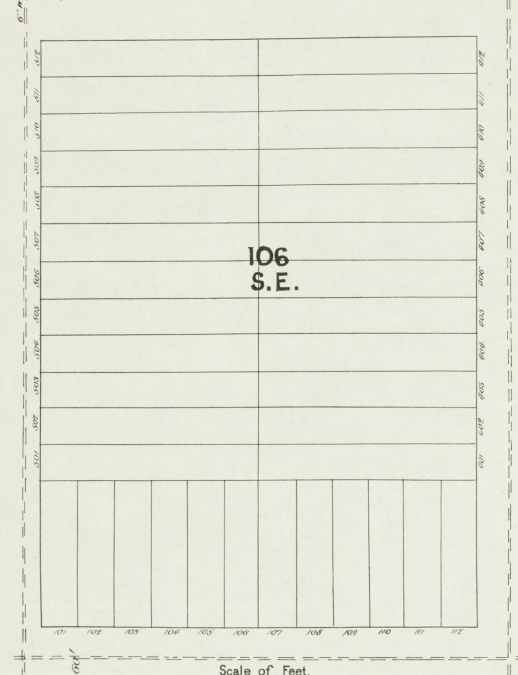
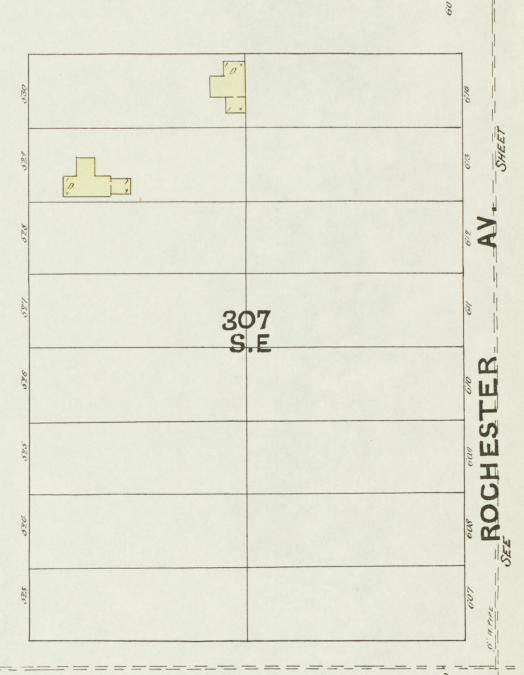
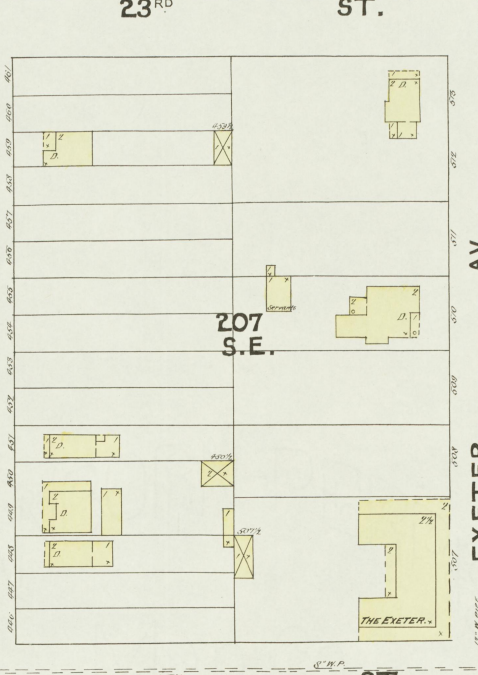
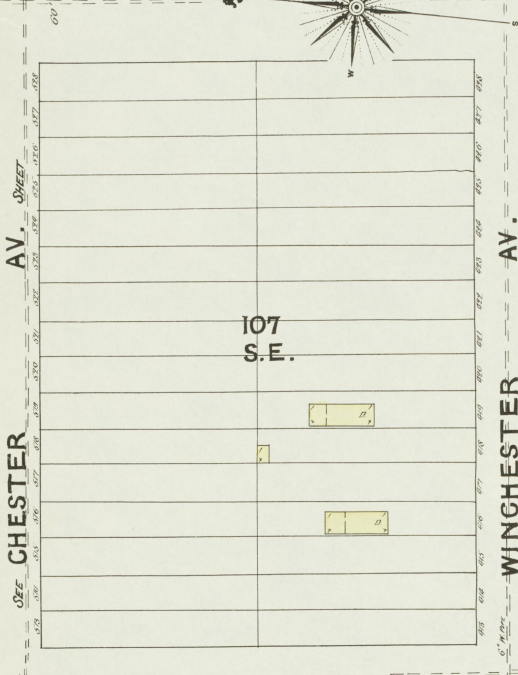
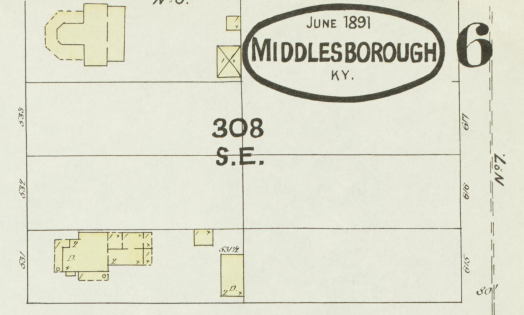
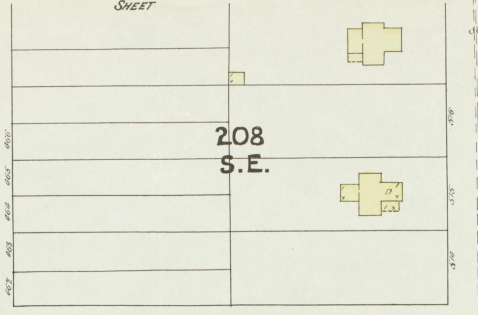
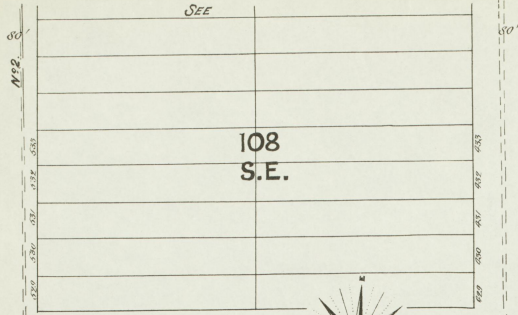
NO. 7.

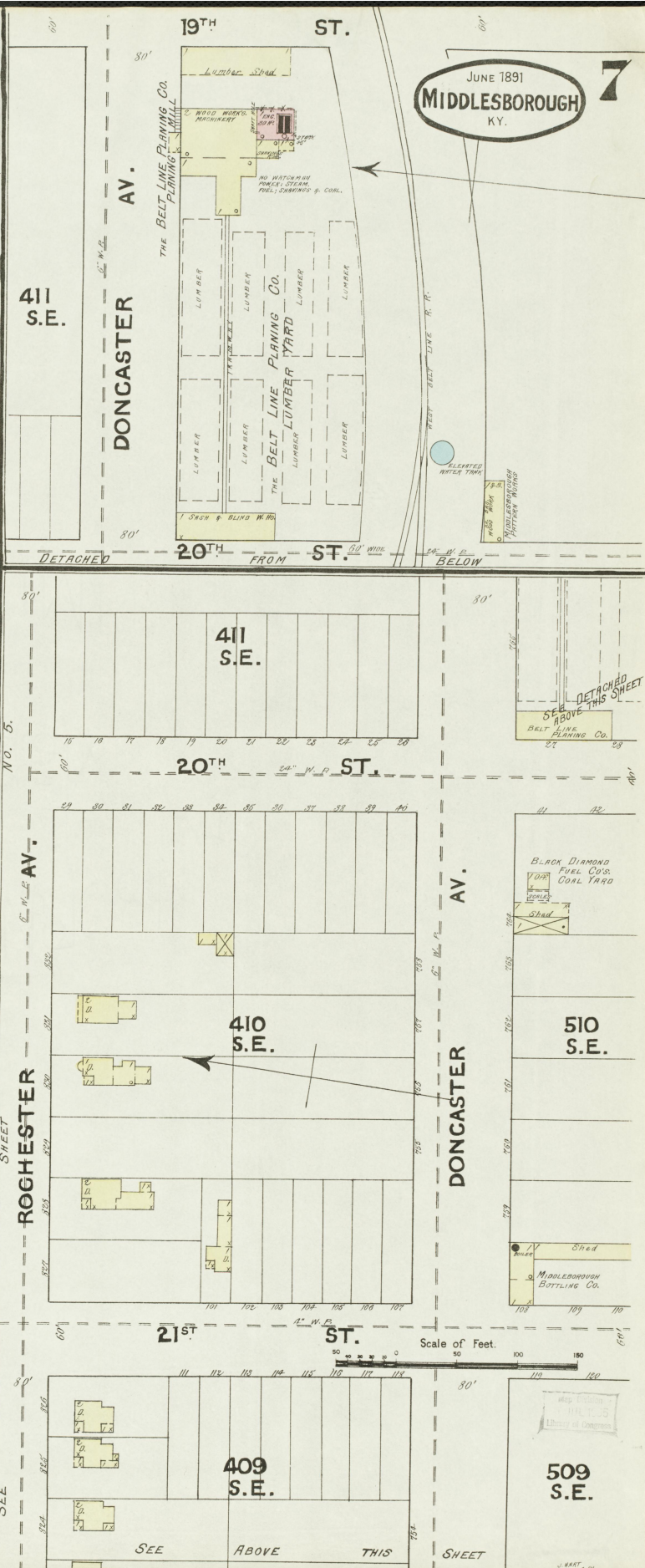
SHEET

ROCHESTER AV.

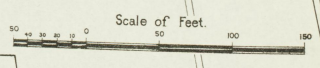
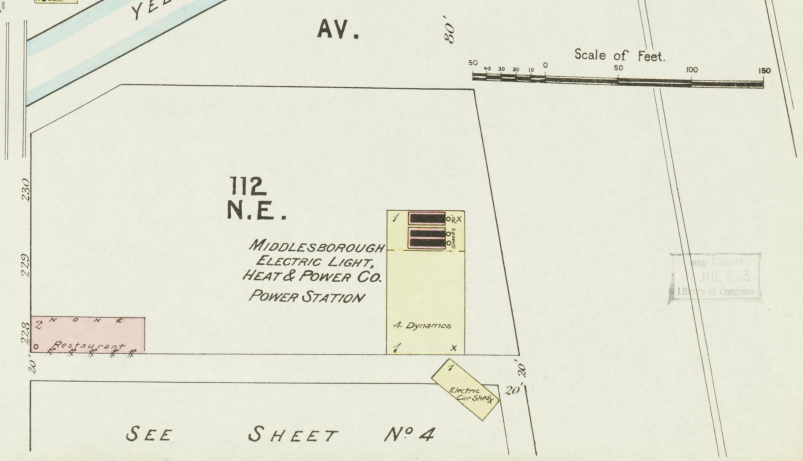
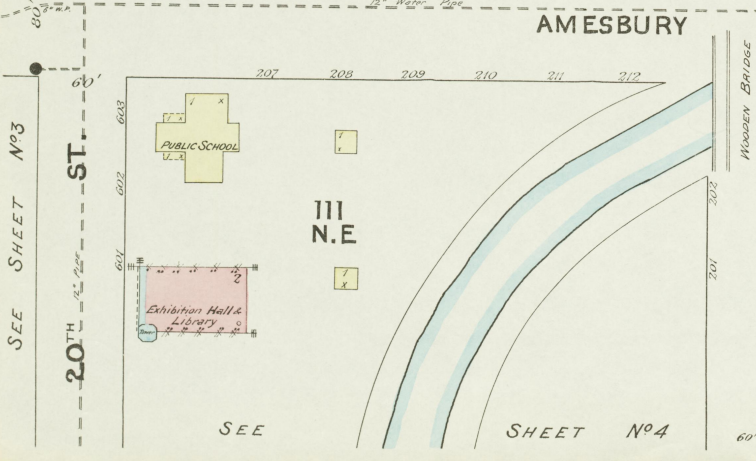
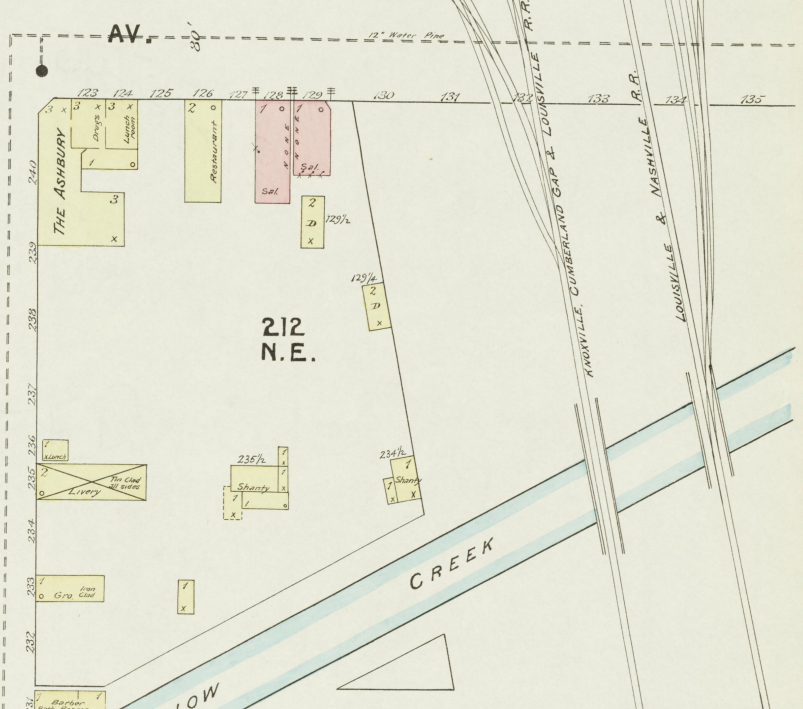
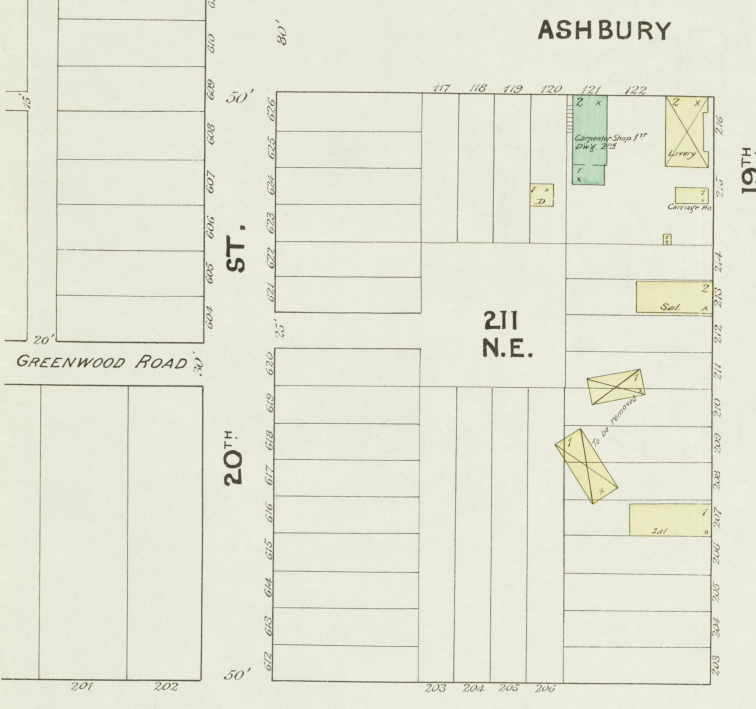
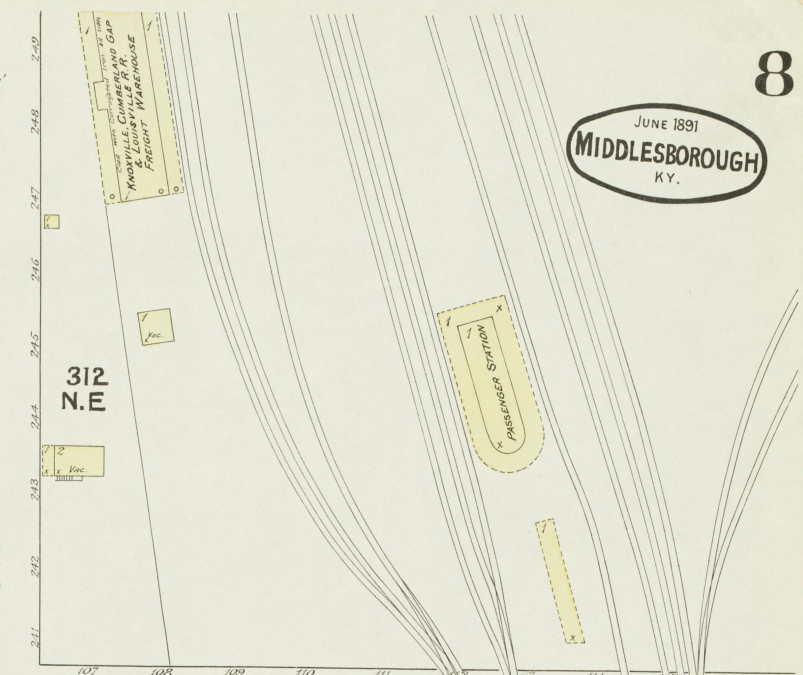
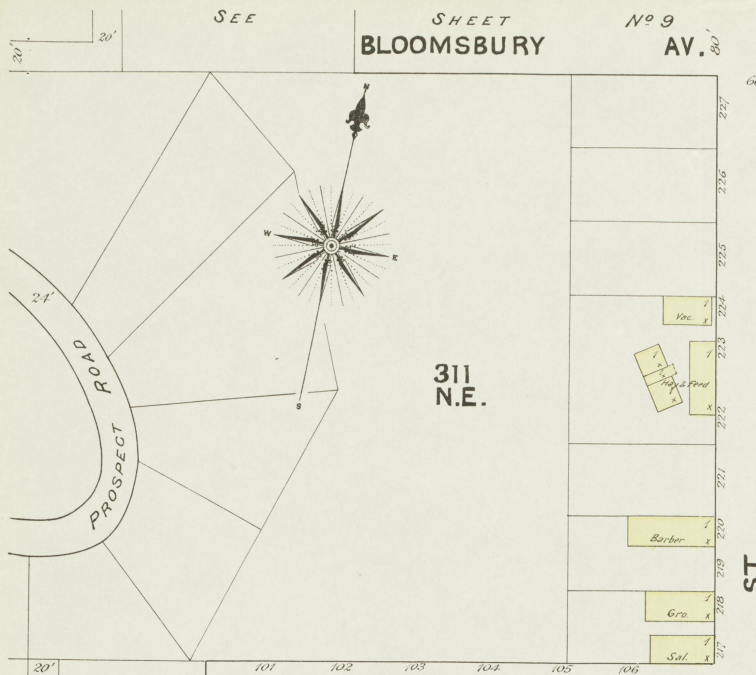
SEE

NO. 6.





JUNE 1891
MIDDLESBOROUGH
KY.



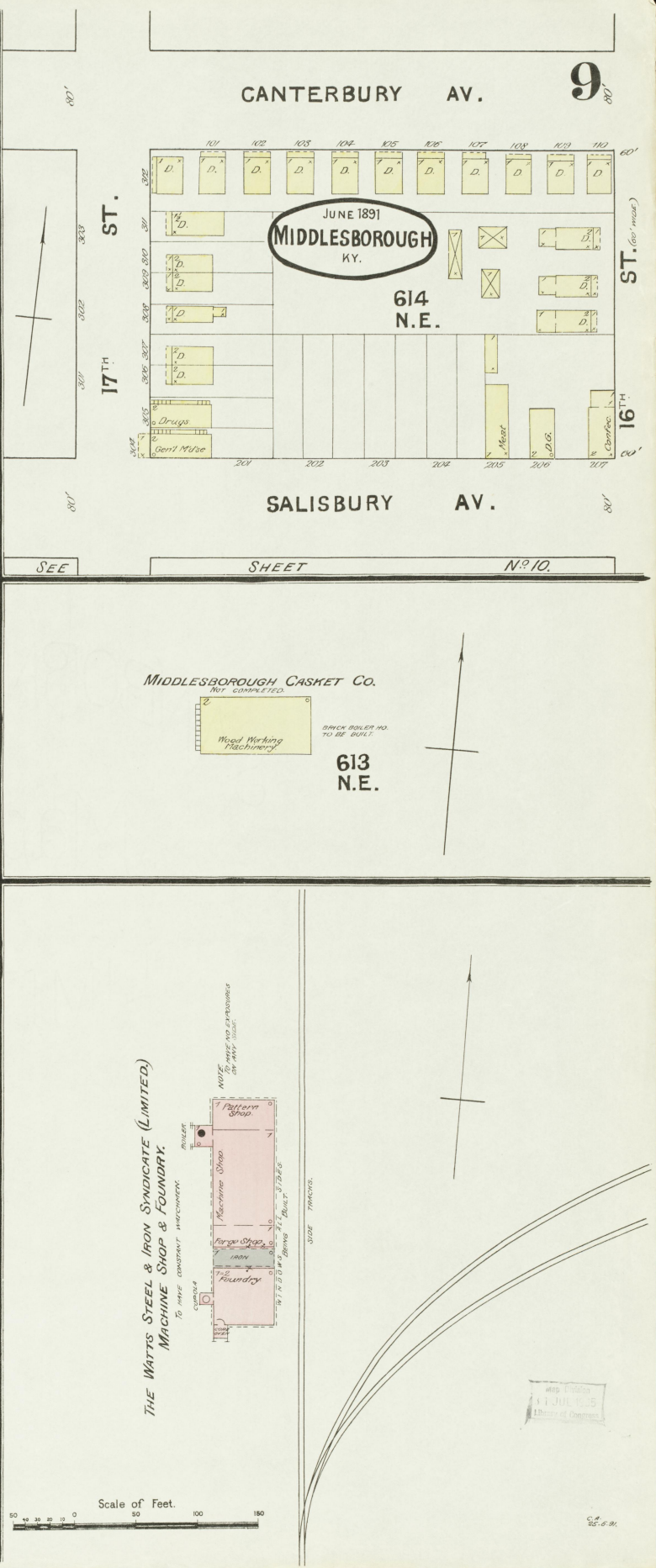
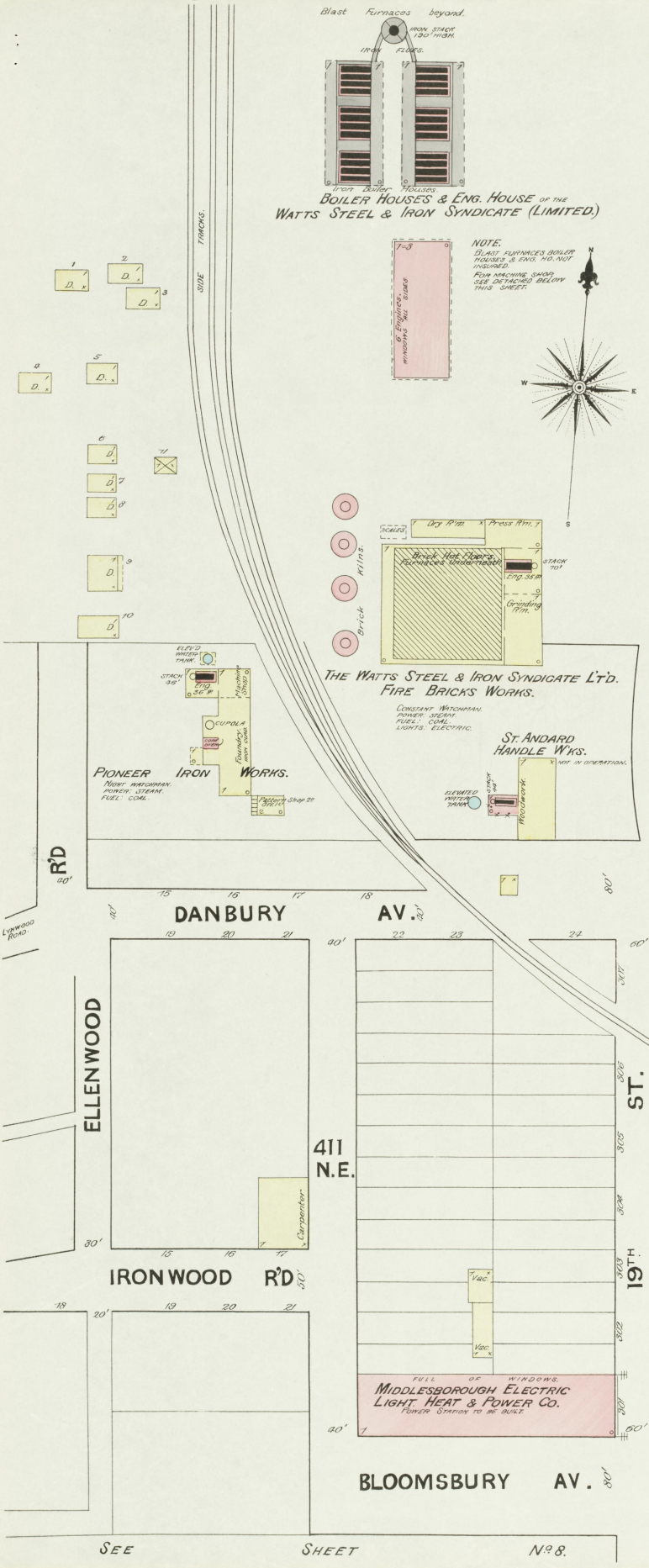
SEE SHEET No 3

SEE

SHEET No 4

SEE

SHEET No 4



414 N.E.

17TH (NOT GRADED) ST.

JUNE 1891
MIDDLESBOROUGH
KY.

413 N.E.

7 Dry No.
8 Dry No.

MIDDLESBOROUGH
FURNITURE CO.
(NOT GRADUATED)

DANBURY (NOT GRADED) AV.

SIZE BELOW.

SALISBURY AV.

SEE SHEET NO. 9.

514 N.E.

17TH (NOT GRADED) ST.

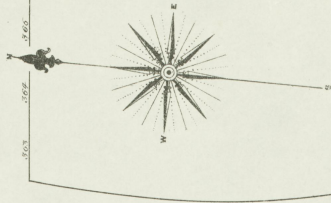
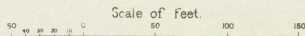
513 N.E.

MIDDLESBOROUGH NOVELTY WOOD WORKS CO.

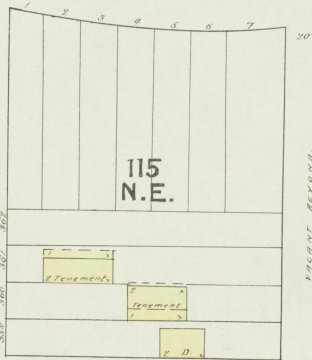
NIGHT WATCHMAN
NO WATCHMAN
NO WATCH CLOCK
ALARM SYSTEM
FULL CODE SHOWN
INCLUDES EXISTING FIRE ALARMS LANTERN
TO HAVE AUTOMATIC SIGNALERS.

DANBURY
SEE ABOVE

M.S. 1891
JUL 15
1/1000 of Contour



KENSINGTON OVAL



115 N.E.

2 Tenements
2 Tenements
Y. D.

AV.

216 N.E.

15TH ST.

215 N.E.

16TH ST.

AMESBURY

214 N.E.

17TH ST.

114 N.E.

ST.

113 N.E.

SLUSHER MITCHELL & CO.
NO WATCHMAN
POWER SYSTEM
FUEL COALS SHIPPERS

Grain Mill
Eng. Shop
Storage
Lumber Shed

