

OCT. 1916
CYNTHIANA
Ky.

4
15

84

WEBSTER AV.

OLD LAIR ROAD

87

86

BATTLE GROVE AV.

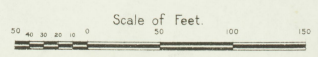
BRIDGE

13

85

S. ELMARCH AV.

83

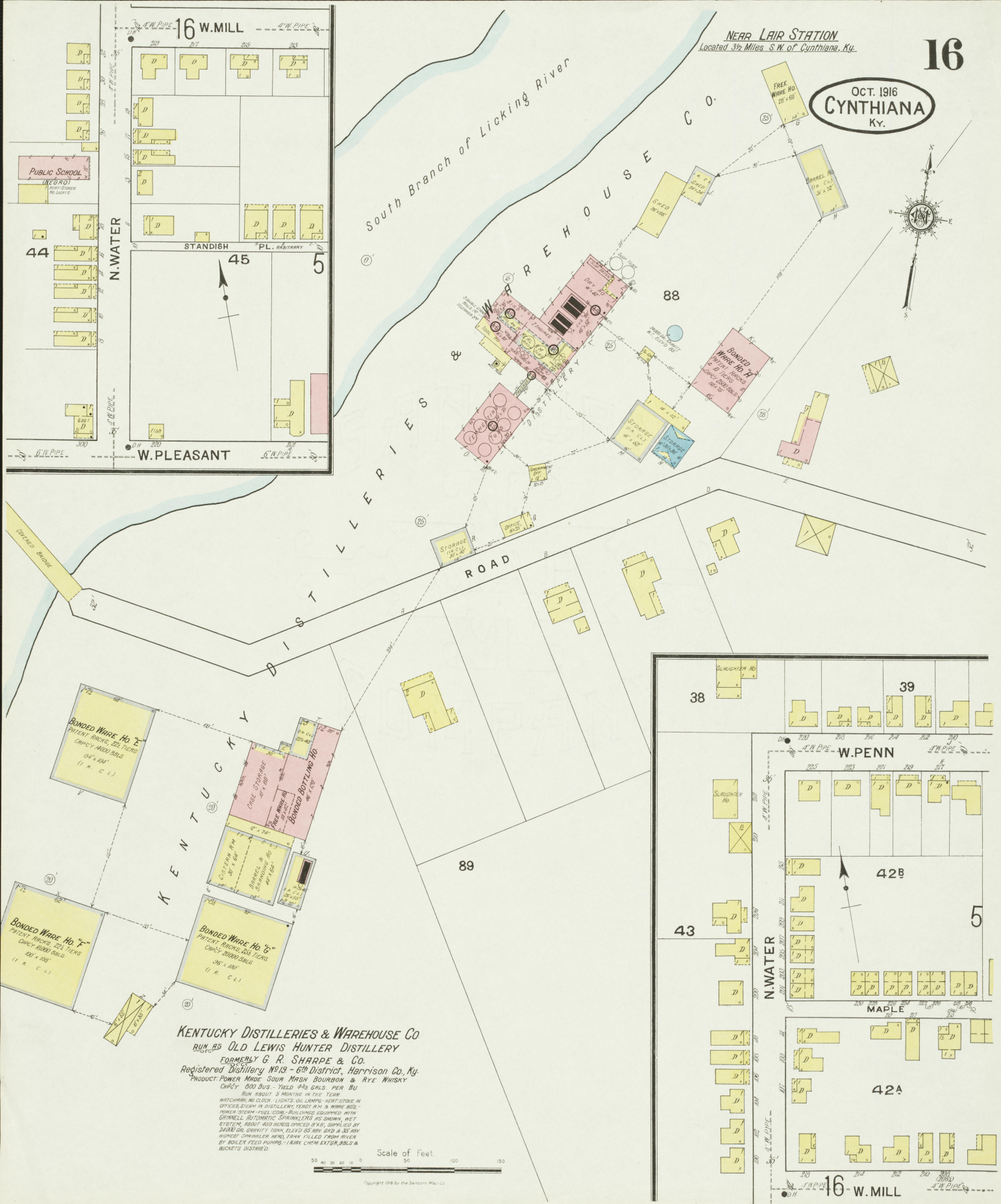


Copyright 1916 by The Standard Map Co.



NEAR LAIR STATION
Located 3 1/2 Miles S.W. of Cynthiana, Ky.

OCT. 1916
CYNTHIANA
KY.

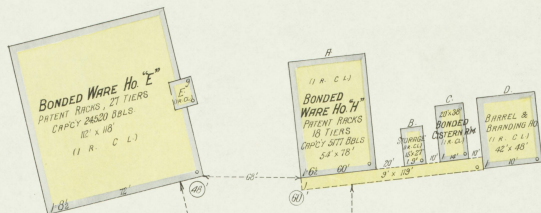


KENTUCKY DISTILLERIES & WAREHOUSE CO.
BUILT BY OLD LEWIS HUNTER DISTILLERY
FORMERLY G. R. SHARPE & CO.
Registered Distillery No. 19 - 6th District, Harrison Co., Ky.
PRODUCT: POWER MADE SOUR MASH BOURBON & RYE WHISKY

CHERRY 600 BUS. - FIELD #18 GALS. PER BU.
BURN RESIDUE 6 MONTHS IN THE YEAR
WATCHMAN NO. 1000 - LIGHTS OIL LAMPS - HEAT STORE IN
OFFICES STEAM IN DISTILLERY BOTTLE IN & WARE BLDG.
POWER STEAM - FUEL COAL - BUILDINGS EQUIPPED WITH
GRINWELL AUTOMATIC SPRINKLERS AS SHOWN, NET
SYSTEM, BURNER AND RESERVOIR SPRINKLER, SUPPLIED BY
30000 GAL. GRAVITY TANK, ELEV. 85 IN. W. GRID & 35 IN.
HIGHER SPRINKLER HEAD, FURN. FILLED FROM RIVER
BY BOILER FEED PUMPS - 14 IN. CHAIN EXTER. BALS &
BUCKETS INSTALLED

Scale of Feet
0 20 40 60 80 100 120 140 160

Copyright 1916 by the Sanborn Map Co.



KENTUCKY DISTILLERIES & WAREHOUSE CO.
RUN BY **THE A. KELLER CO.**
RUN BY **G. G. WHITE & CO.**
RUN BY **H. B. KIRK & CO.**
FORMERLY **HASHBROOK BROS.**
Registered Distillery No. 6th District, Harrison Co., Ky.
PRODUCT: POWER MADE SOUV. MASH BOURBON & RYE WHISKY
CAPCY. 400 BUS., YIELD 480 GALS. PER BUS.
RUNS 6 MONTHS IN THE YEAR
WHITCOMB: NO. 100 - LIGHTS: OIL BURNING - WORKER
STEAM - FUEL: COAL - HEAT: STORE IN OFFICES, STEAM
IN WARE HOUS. BOTTLING HO. & YEAST: A.M. - BILLS IN
BUCKETS DISTRIBUTED, LAURA CHAM. 474 1/2

Located 1 1/2 Miles N. of P.O.
NO EXPOSURE ANY SIDE.

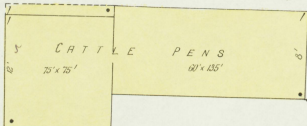
LOVERS LANE

South Branch of Licking River

Located 4 1/2 Miles N.W. of Cynthia, Ky. &
1 Mile E. of Poindexter, Ky.
NO EXPOSURE ANY SIDE.

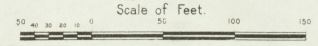


THE WIGLESWORTH BROS. CO. INC.
FORMERLY **WIGLESWORTH BROS.**
Registered Distillery No. 10 - 6th District, Harrison Co., Ky.
PRODUCT: POWER MADE SOUV. MASH BOURBON WHISKY
CAPCY. 300 BUS. - YIELD 40 GALS. PER BUS.
RUNS 6 MONTHS IN THE YEAR
WHITCOMB: WINDMILLER CLOCK: 3 DISTILLING: 1000 - REGULAR BOUNDS - LIGHTS
OIL LAMP - POWER: STEAM - FUEL: COAL - HEAT: STORES IN OFFICE, BOTTLING
HO. & YEAST: A.M. - NO HEAT IN WARE HOUS. - NO DOUBLES - 1000 & 1000
AS SHOWN SUPPLIED BY 4000 LBS. H. J. & KELLY F. P. 40 GIL. CHEM. TANK
ON WHEELS IN WARE HO. 2, 3 GIL. & 3 GIL. SHIRAZ CHEM. EXTRACTS
JUSTIFIED



POINDEXTER AND CYNTHIANA PIKE

South Branch of Licking River



Copyright 1916 by the Sanborn Map Co.