

INDEX.

STREETS.

Alexander Alley	100-325 13
Allen	100-325 13
Alton	100-325 13
...	...
Front, E.	100-325 13
...	...
Bolivar	100-325 13
...	...
Cherry	100-325 13
...	...
Dublin Ave.	100-325 13
...	...
Eighty, E.	100-325 13
...	...
Eleventh, E.	100-325 13
...	...
Fifth, E.	100-325 13
...	...
Fourth, E.	100-325 13
...	...
Third, E.	100-325 13
...	...
Second, E.	100-325 13
...	...
First, E.	100-325 13
...	...

SPECIALS.

American Tobacco Co.	100-325 13
...	...
Baptist Mission Church	100-325 13
...	...
Carroll's Store	100-325 13
...	...
City Hall	100-325 13
...	...
County Court House	100-325 13
...	...
Daily Messenger Printing	100-325 13
...	...
Equity Mills	100-325 13
...	...
Farmers Hotel	100-325 13
...	...
First Baptist Church	100-325 13
...	...
Fourth Presbyterian Church	100-325 13
...	...
High School	100-325 13
...	...
Johnson's Add.	100-325 13
...	...
Public Warehouse	100-325 13
...	...
Water Works Co.	100-325 13
...	...

INSURANCE MAPS
of
Owensboro
DAVIES CO.
KENTUCKY
Sanborn & Perris
LIMITED CO.
11 Broadway, New York
97156
SCALE SOFT TO AN INCH
NOV. 1900
Copyright 1900 by the Sanborn-Perris Map Co. Limited

Population 16,000, Prev. Winds S.W.
WATER FACILITIES. Holly (direct pressure) system of water works. Water supply from Ohio River. One Buffalo compound condensing crank & fly wheel steam pump 20'x40'x36" & 18'x36" capacity 4 million gallons per day also one compound condensing crank & fly wheel steam pump designed by J.W. Holmes - 15'x24'x30" & 14'x30" capacity 2 million gallons per day. Pump cylinders 40 lb. per sq. in. and separate vent for each. Water works owned by stock company. 23 miles of water pipes of 10 to 24 inch diam. 162 double hydrants. Water pipes have flushing gates. Flushing done three to five times yearly. Domestic pressure 60 lbs. fire pressure, 80 to 125 lbs. per sq. in. Average daily consumption 1 1/2 million gallons.
FIRE DEPARTMENT. 12 paid men. 8 trained horses. 2 hose houses, day and night volunteers at each. Swinging harness. Automatic gas lights. Automatic trap and front doors and chain drop to release hoses. Responsive service. 17 seconds. Bellows fire alarm telegraph. 22 stations. Register and gong at each hose house and at water works. Whistle at water works indicates station by code. Telephone service.
2-four wheel Preston Independent Hose Carts. 1500' 2 1/2 inch rubber hose. 1-double cylinder Chemical fire engine. 100' 1 1/2 inch rubber hose, attached with shut-off nozzle.
1 Hook & Ladder truck. 150 ft. of ladders.
Grades light city practically level. 2 1/2 miles of streets Macadamized and 4 1/2 miles of asphalt and macadam being laid. Public lights gas and electric.

KEY
STABLE COLORED YELLOW ARE FRAME
BROWN ARE BRICK
BLACK ARE BRICK
GREEN ARE BRICK
RED ARE BRICK
...
INDICATE RELATIVE HEIGHTS
FIRE STATION AS SHOWN ON KEY MAY
ALTERNATE STREET NUMBERS ARE ACTUAL
CONSULTEE STREET ROSE ARE ARBITRARY



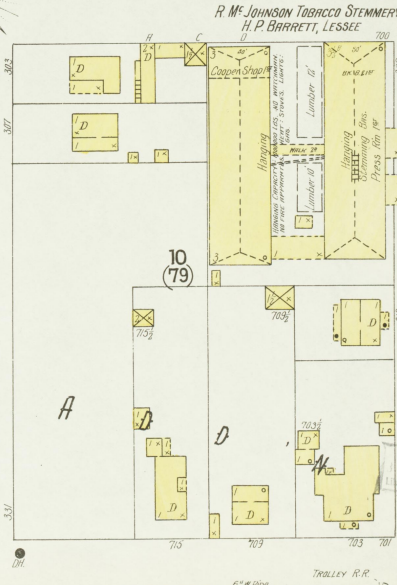
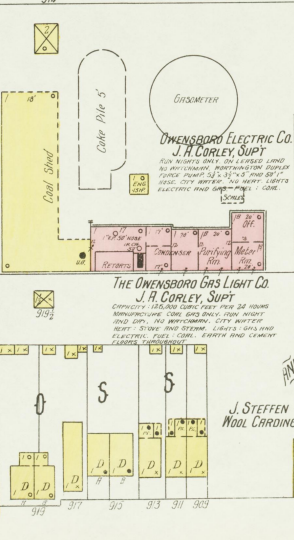
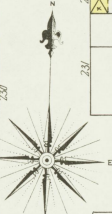
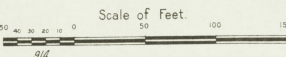
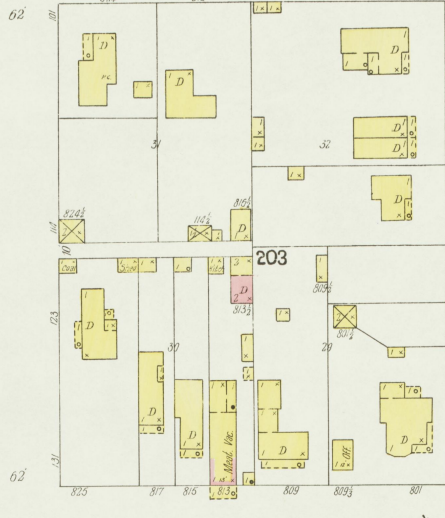
Nov. 1900
OWENSBORO
KY.

CHERRY

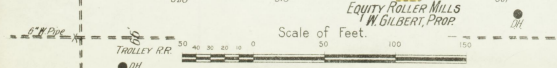
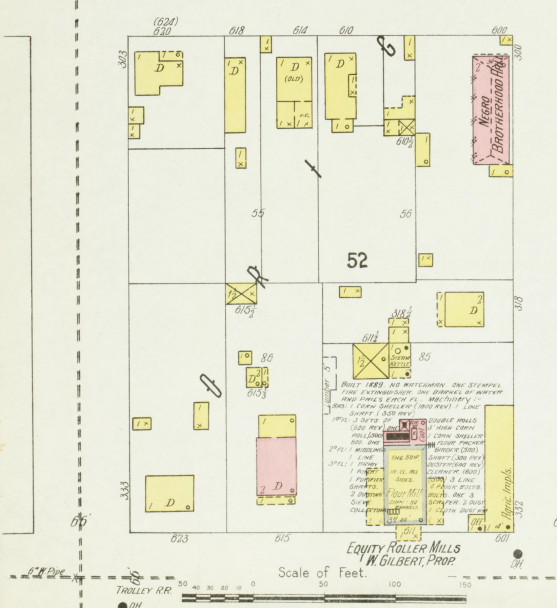
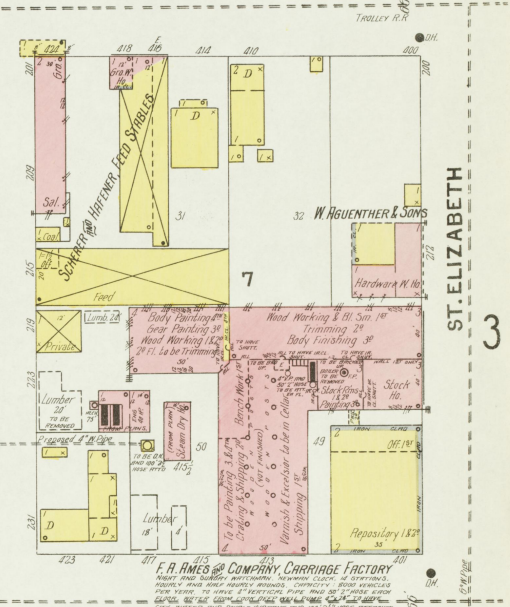
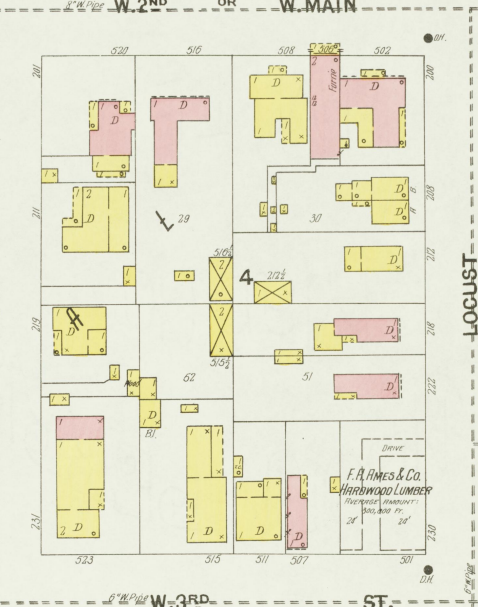
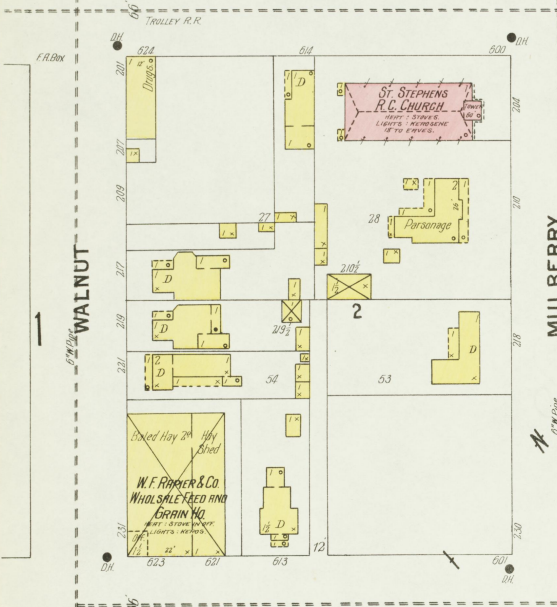
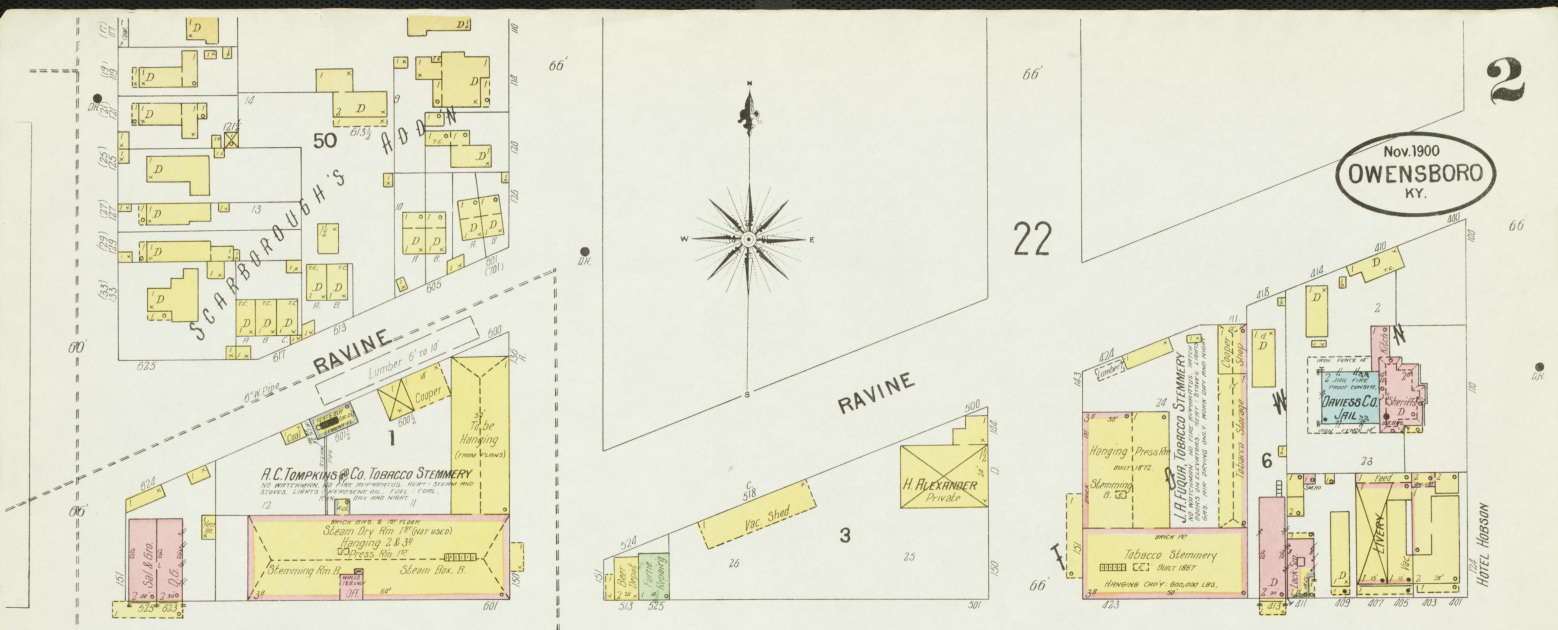
W. 2ND OR W. MAIN

W. 3RD ST.

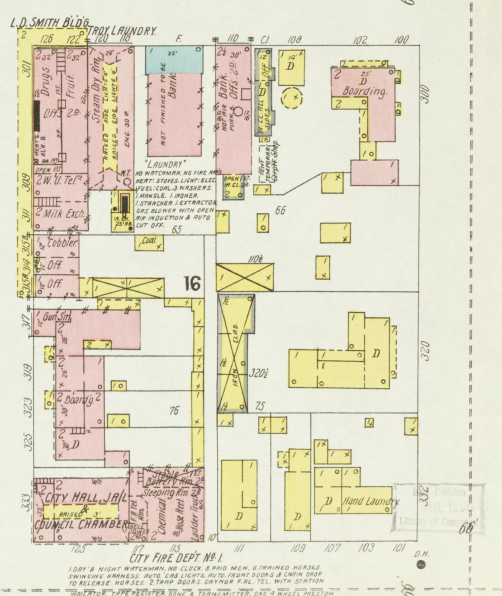
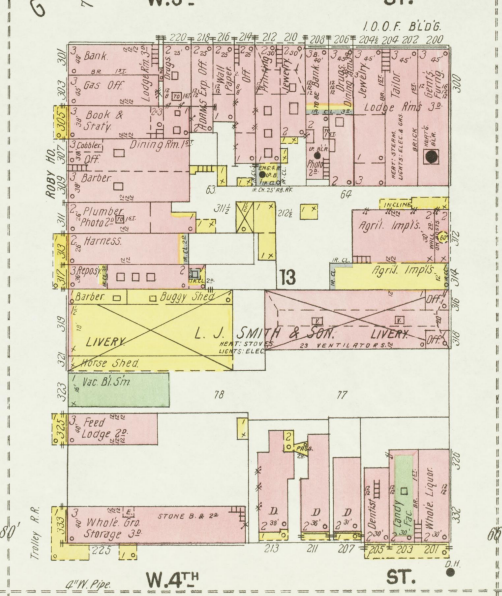
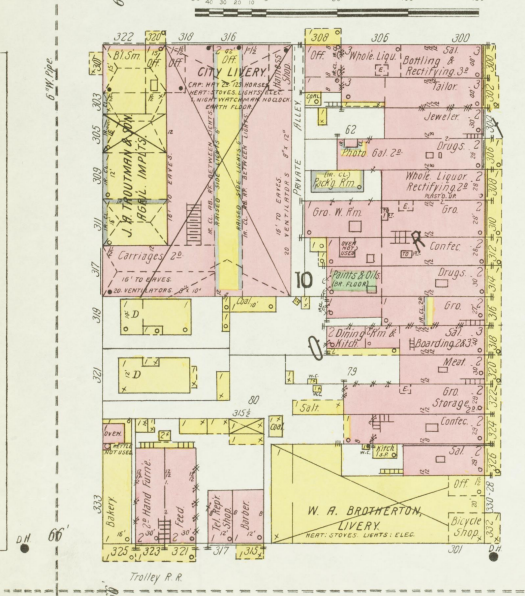
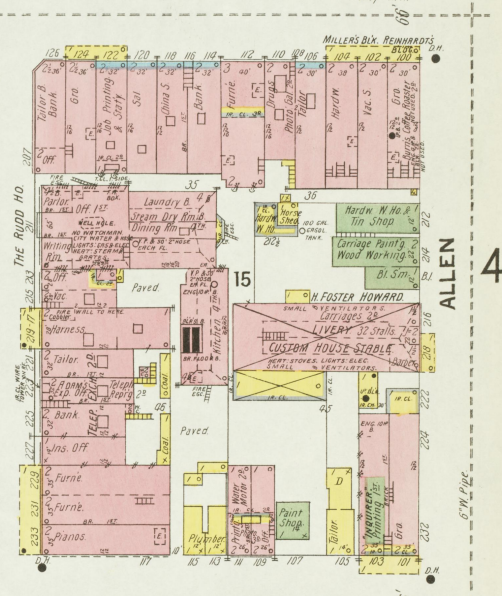
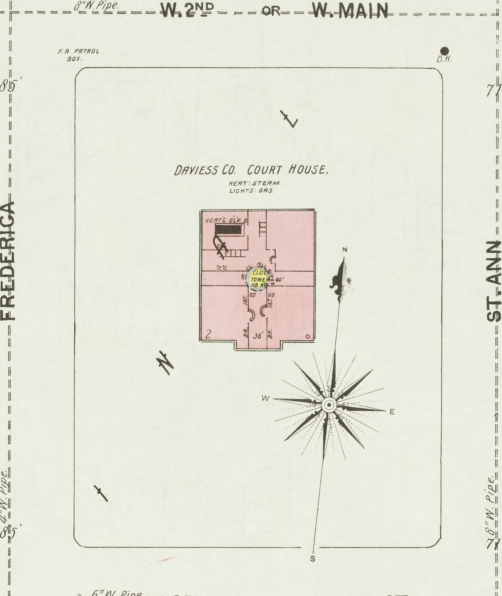
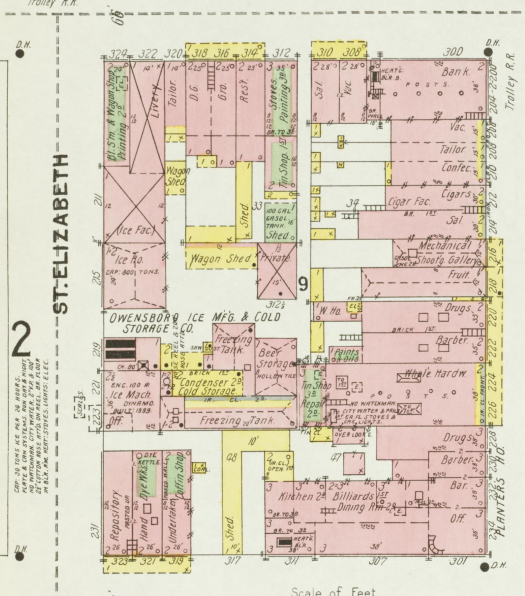
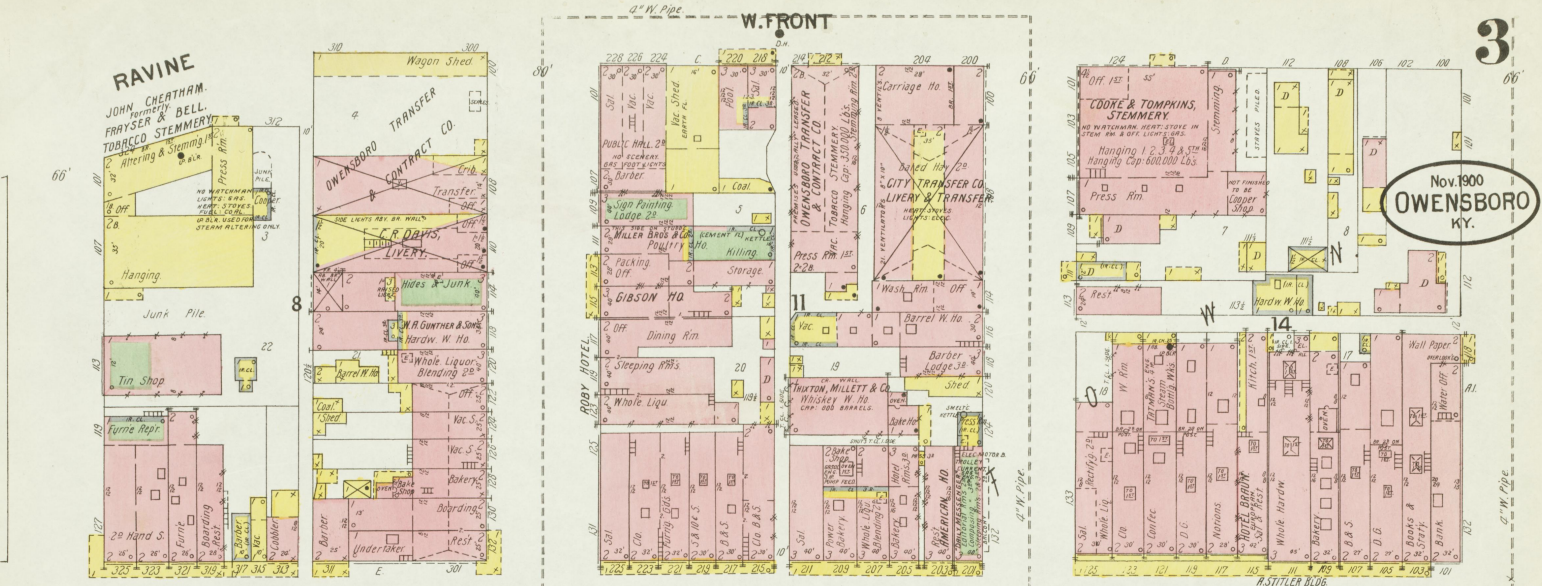
W. 4TH ST.



Scale of Feet. 0 50 100 150. Trolley R.R. 1/4" = 100'

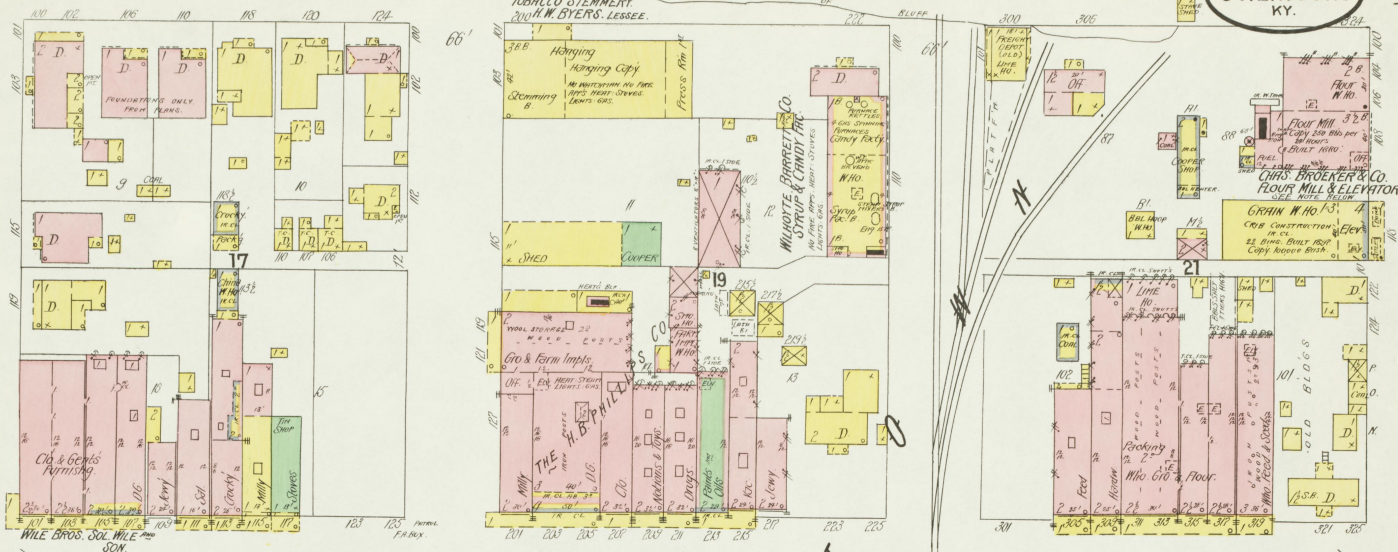


Nov 1900
OWENSBORO
KY.

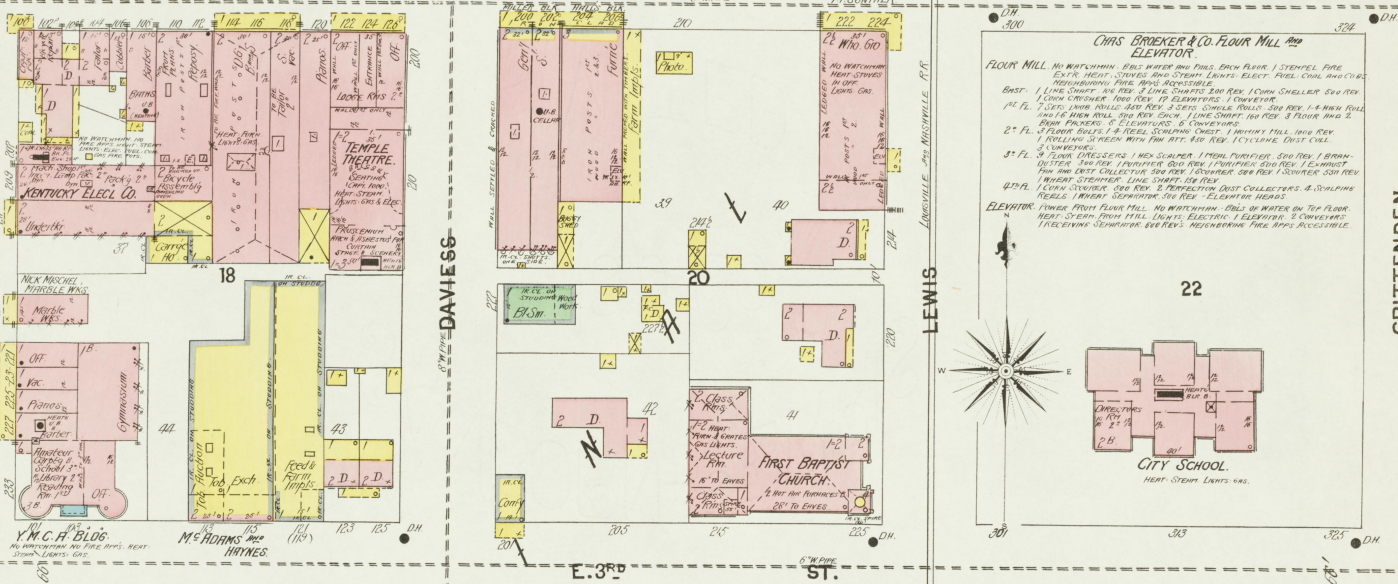


E. FRONT

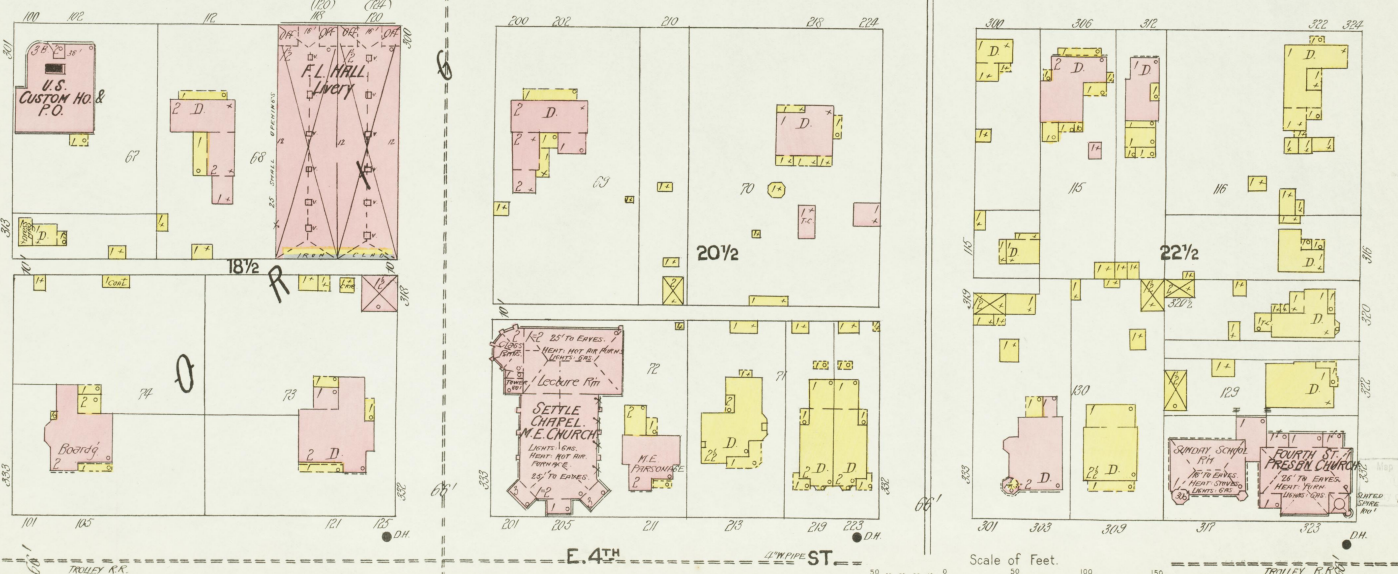
A.T. HARRIS JR.
 TOBACCO STEMMERY
 JOHN W. DYERS, LESSEE.



E. 2ND OR E. MAIN



E. 3RD ST.



E. 4TH ST.

3

ALLEN

DAVIESS

LEWIS

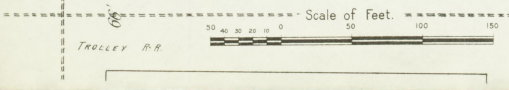
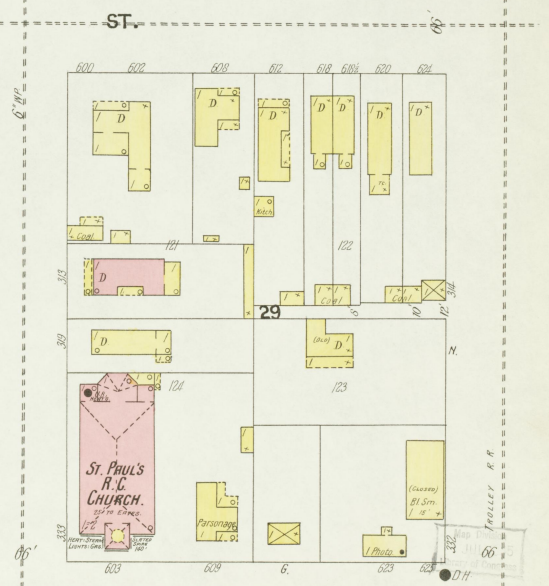
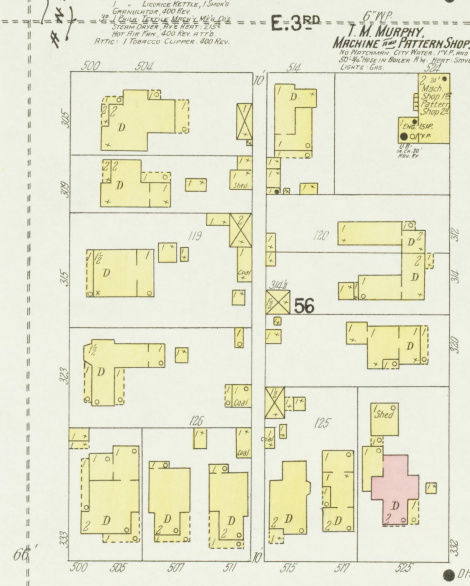
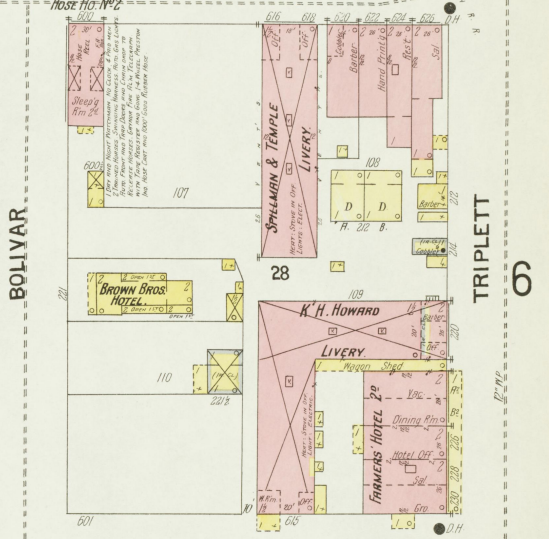
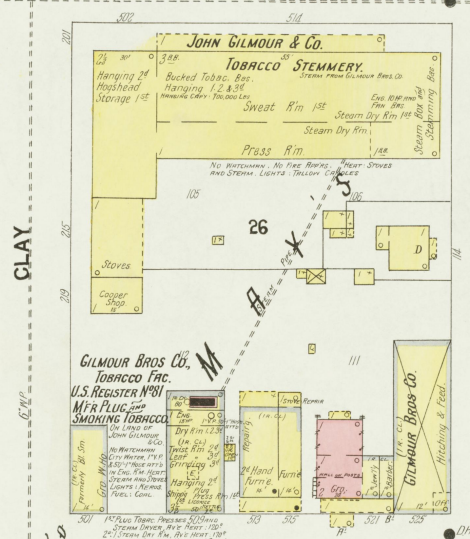
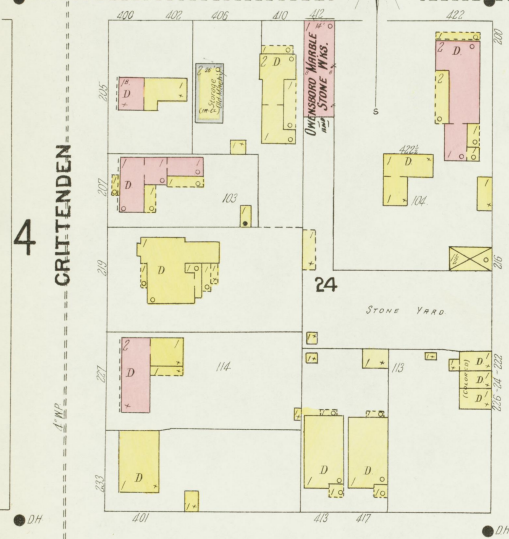
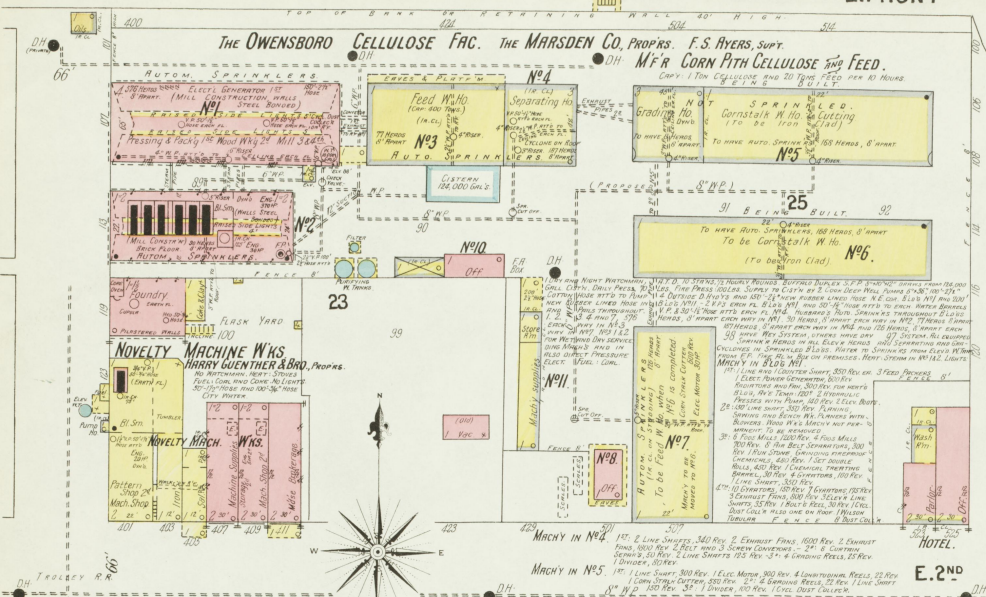
CRITTENDEN

5

Nov. 1900
OWENSBORO
KY.

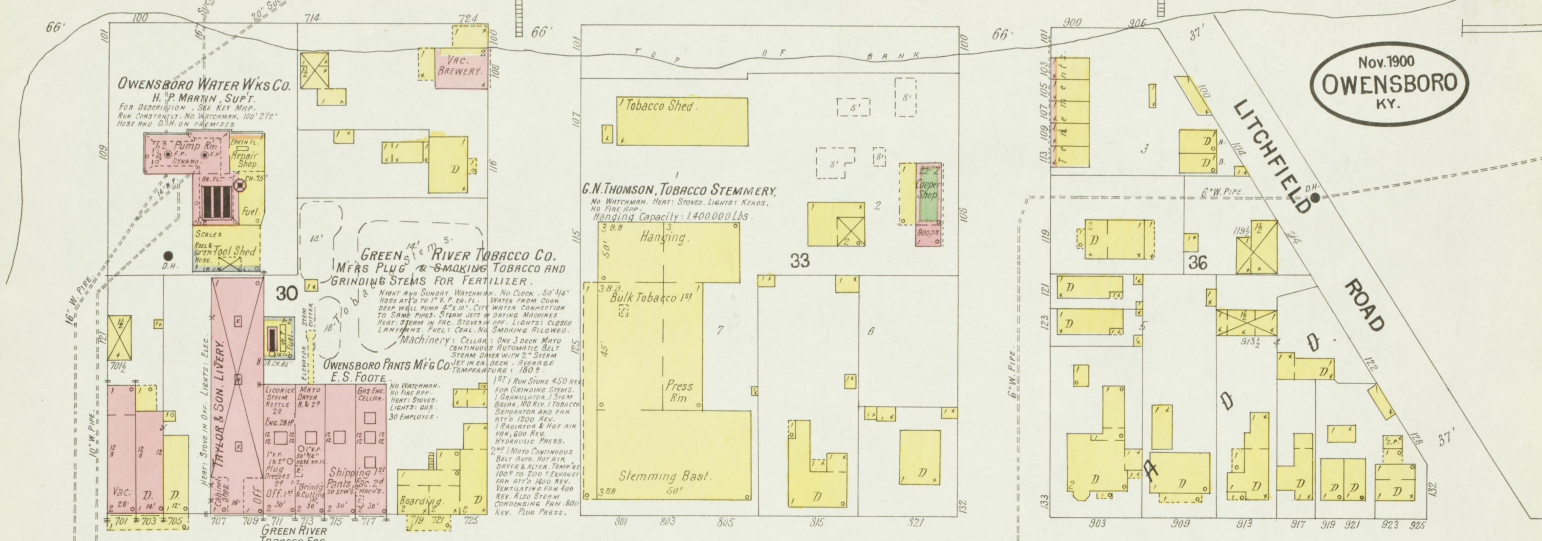
E. FRONT

The OWENSBORO CELLULOSE FAC. THE MARSDEN CO. PROP'RS. F. S. MYERS, SUP'Y.
MFR CORN PITH CELLULOSE AND FEED.

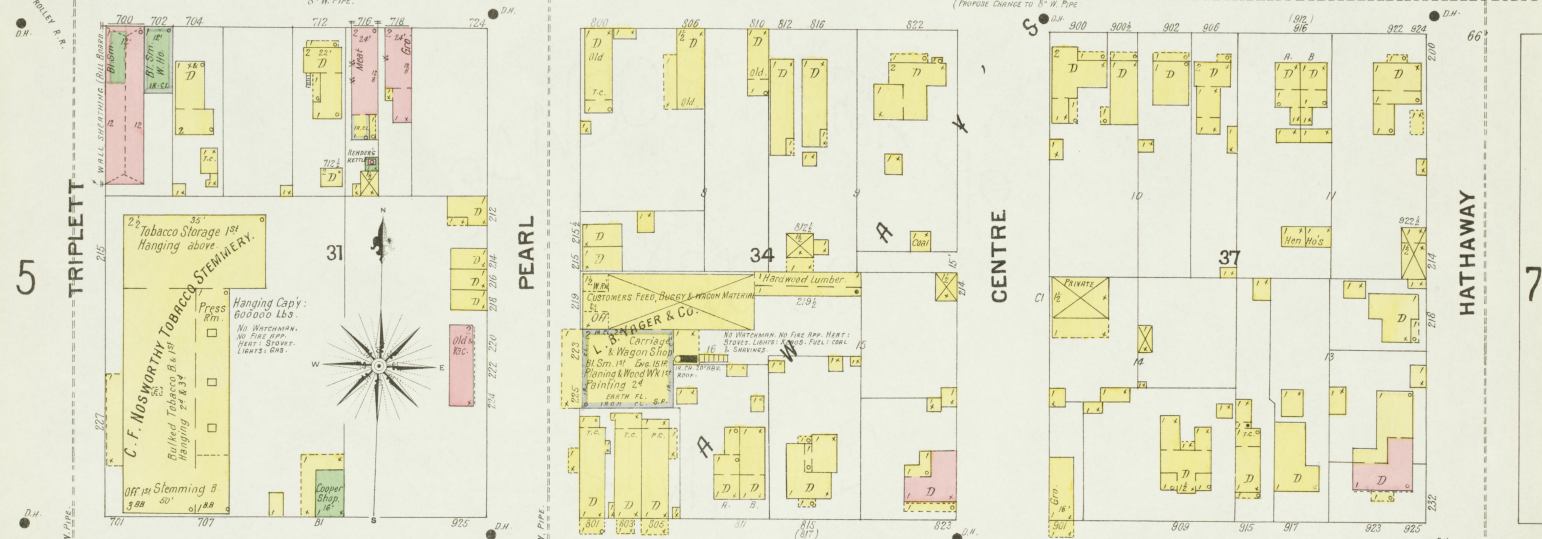


Nov. 1900
OWENSBORO
KY.

E. FRONT

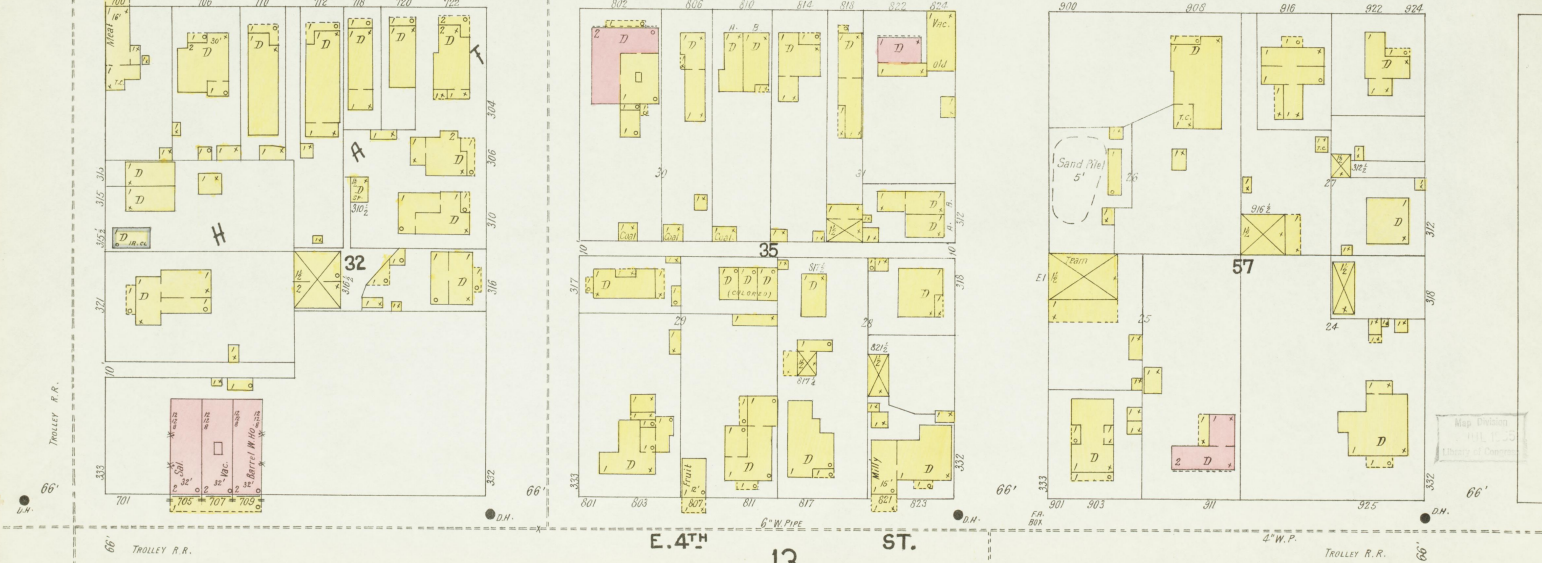


E. 2ND OR E. MAIN



E. 3RD ST.

E. 4TH ST.



OWENSBORO WAGON CO.
 Capacity 10000 Wagons per Year.
 MACHINERY: SCREW DRIVEN, 150 H.P. DIESEL
 MOTOR, 8 STATIONS, 72 H.P. DIESEL ENGINES
 CITY WATER ON ALL BLDGS. 200' CITY WATER
 MAIN AND 250' 2" PIPE IN WAGON FAC.
 12" PIPE AND 100' 1" PIPE IN SPOKE W. HO.
 78" PIPE IN B.L.S.M. IS BURNING WATER IN
 80' DICE FILLING WITH WATER. 8 STATIONS.
 FIRE EXTINGUISHERS DISTRIBUTED. 6 PAIS
 CONCRETE IN WAGON FAC. 20' DIA. IN WAGON FAC.
 FRONT STOPS IN FAC. AND OFF. STOPS IN B.L.S.M.
 ONE PAIR TRUCKS, 3 TRUCKS, ONE AND SHOVELS.
 FIVE PAIR TRUCKS, 3 TRUCKS, SEVEN IN WAGON FAC.
 ONE BARREL PUMP, ONE BARREL PUMP, ONE BARREL
 PUMP, ONE BARREL PUMP, ONE BARREL PUMP.
 140 MEN EMPLOYED.

Nov. 1900
OWENSBORO
 KY.

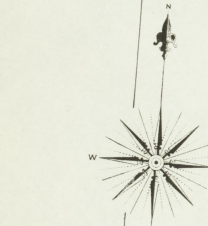
E. 2RD OR E. MAIN ST.

HATHAWAY

E. 3RD ST.

E. 4TH ST.

OWENSBORO BUGGY CO.



Scale of Feet.

TADLEY R. R.

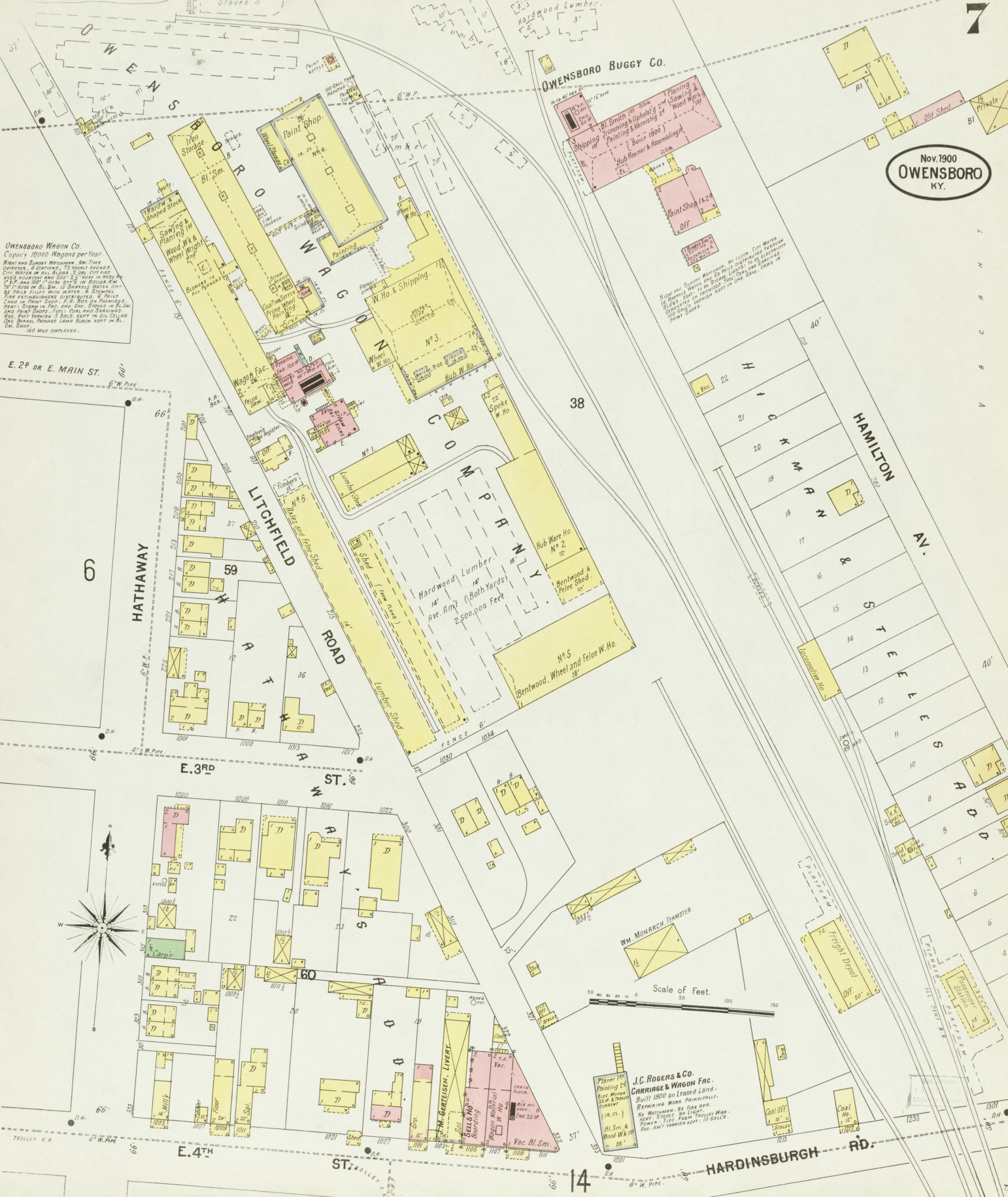
E. 4TH ST.

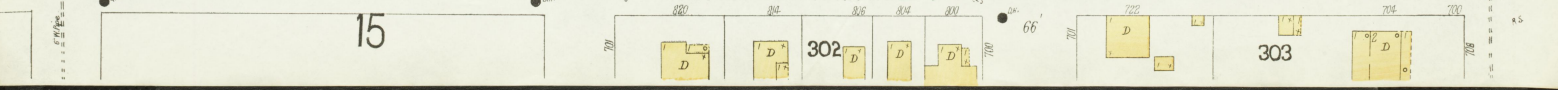
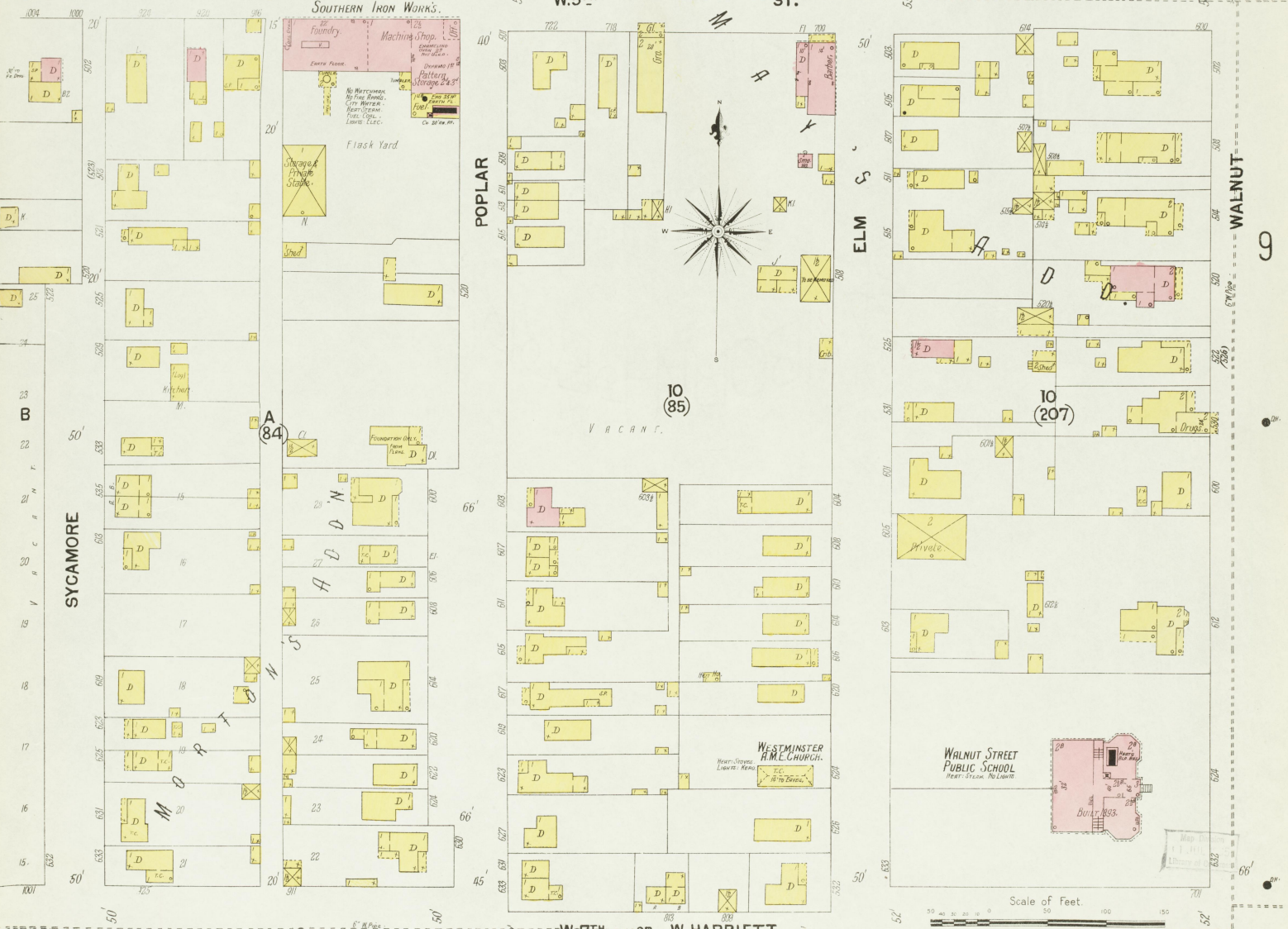
ST. COLLEGE

14

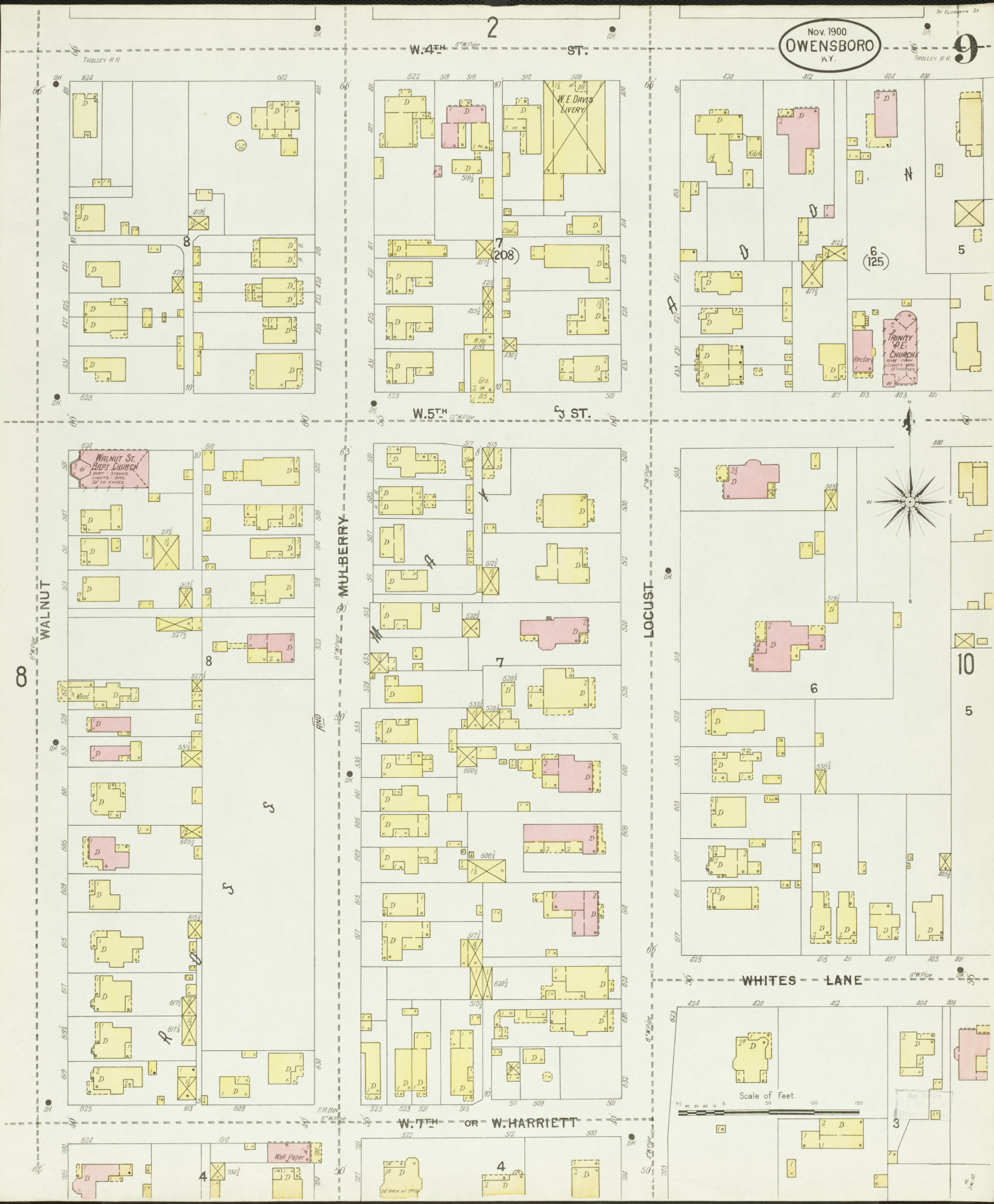
HARDINSBURGH RD.

HAMILTON AV.





Nov. 1900
OWENSBORO
KY.



2

9

W. 4TH ST.

TRALLEY R.R.

TRALLEY R.R.

W. 5TH ST.

WALNUT

MULBERRY

LOCUST

WHITES LANE

W. 7TH OR W. HARRIETT

Scale of Feet.



8

10

8

7

6

3

3

5

R

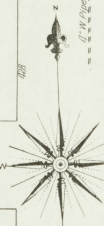
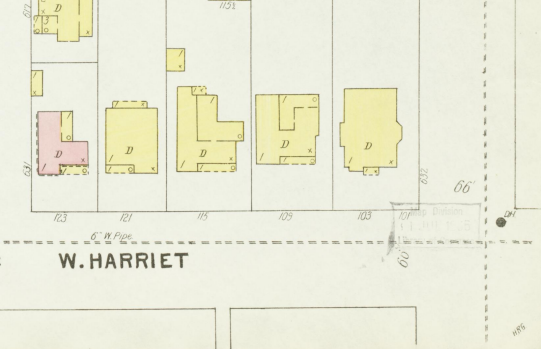
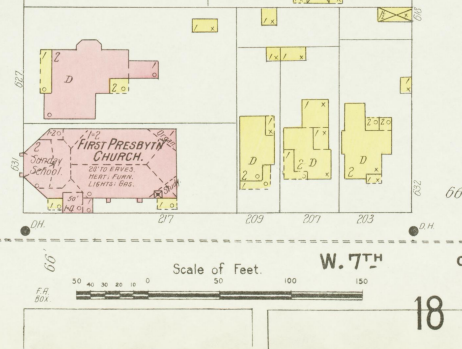
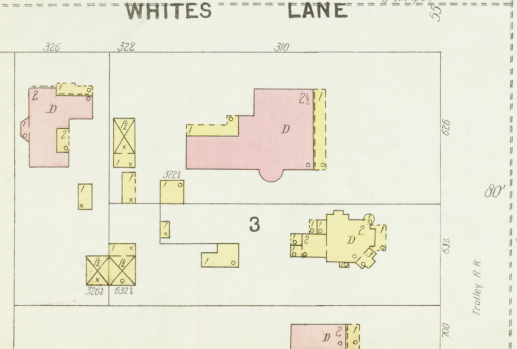
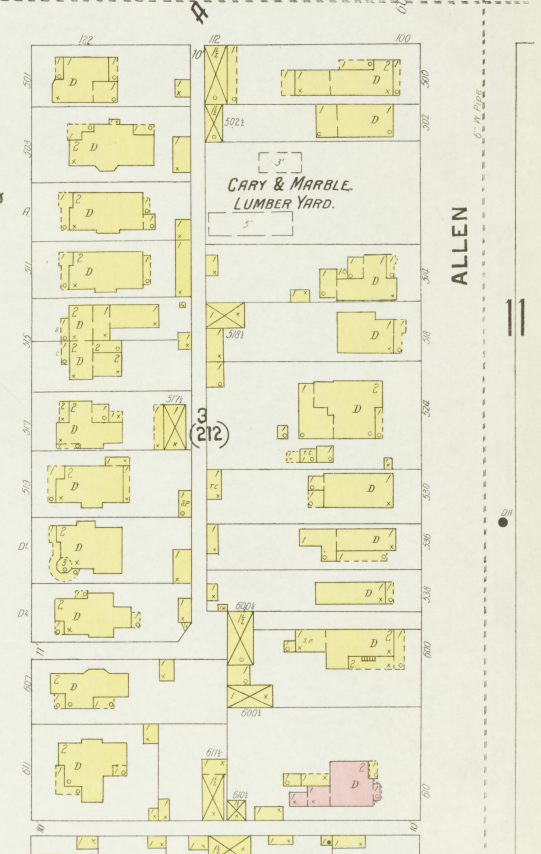
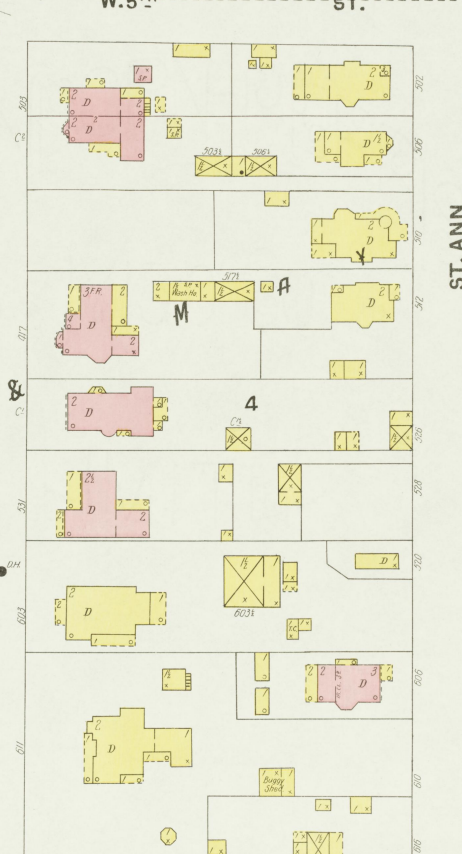
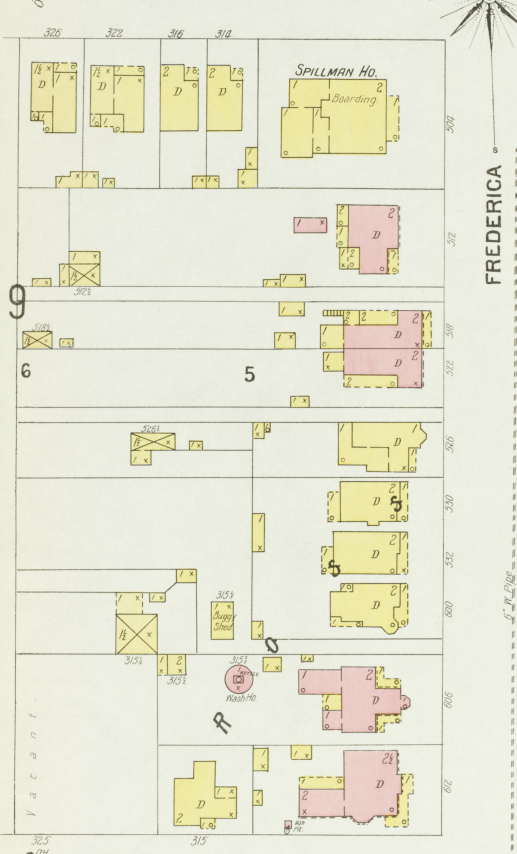
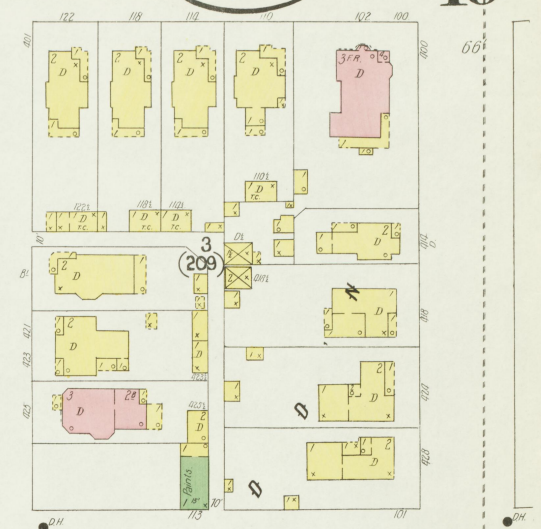
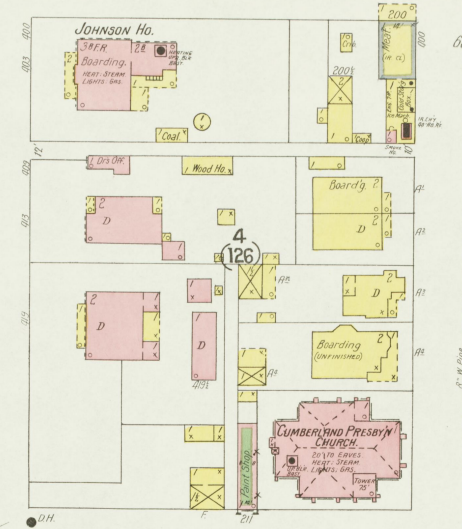
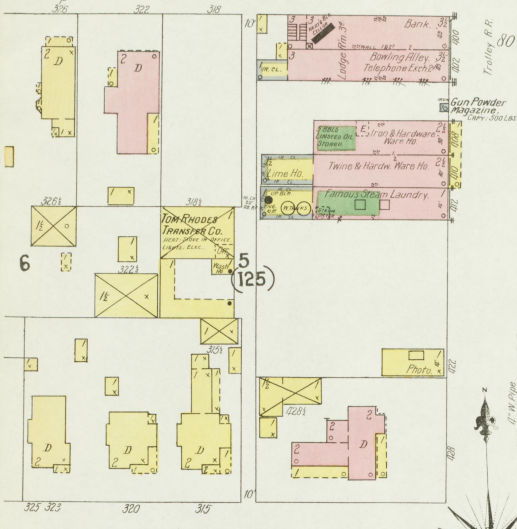
4

3

St. Elizabeth St.

Nov 1900
OWENSBORO
KY.

10

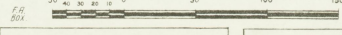


FREDERICA

ST. ANN

ALLEN

Scale of Feet



W. 7th St.

W. HARRIET

18

Nov. 1900
OWENSBORO
KY.

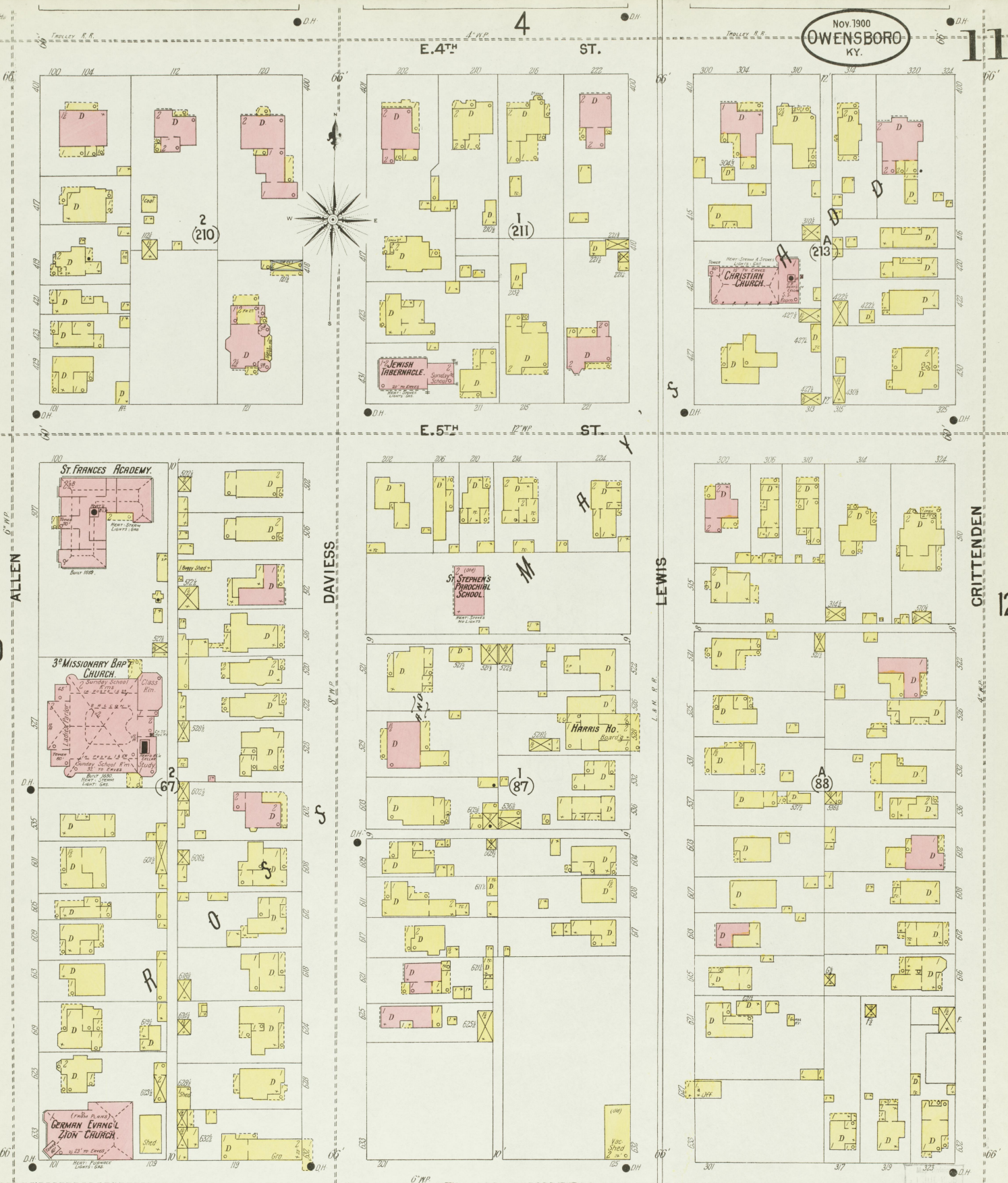
4

11

E. 4TH ST.

E. 5TH ST.

E. 7TH OR E. HARRIET



10

12

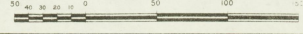
ALLEN

DAVIESS

LEWIS

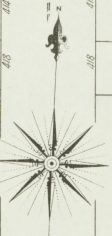
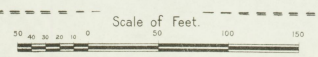
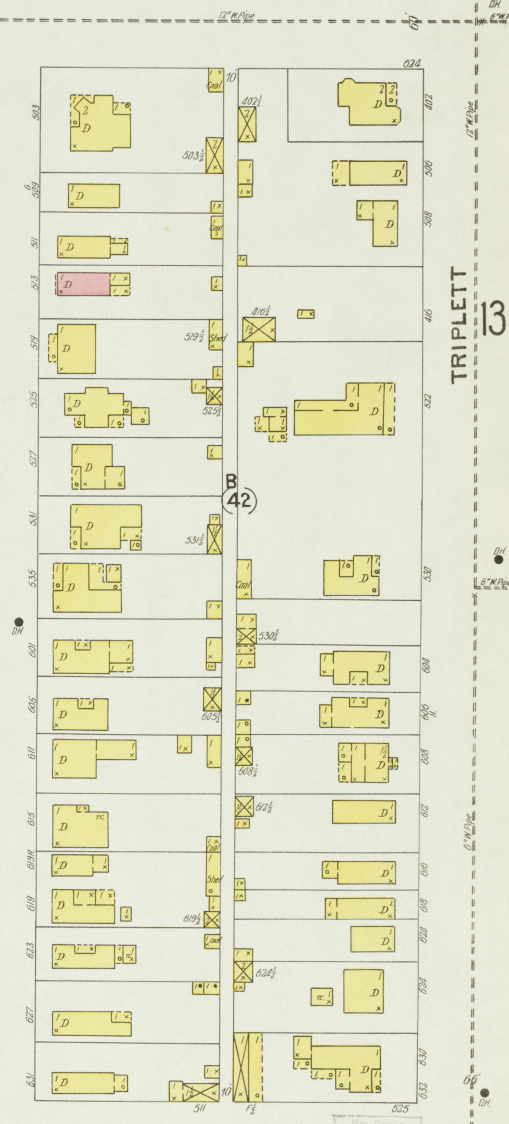
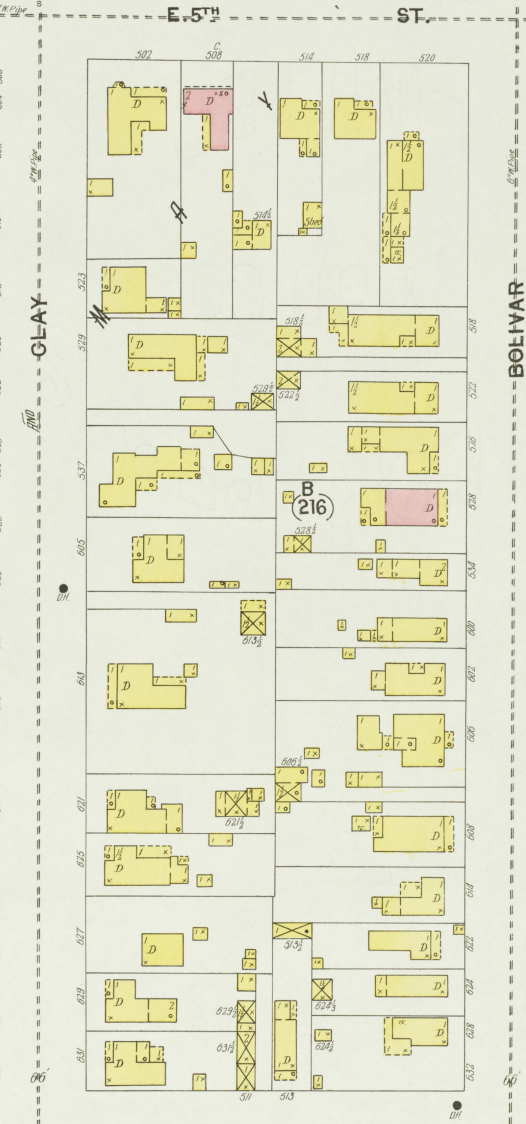
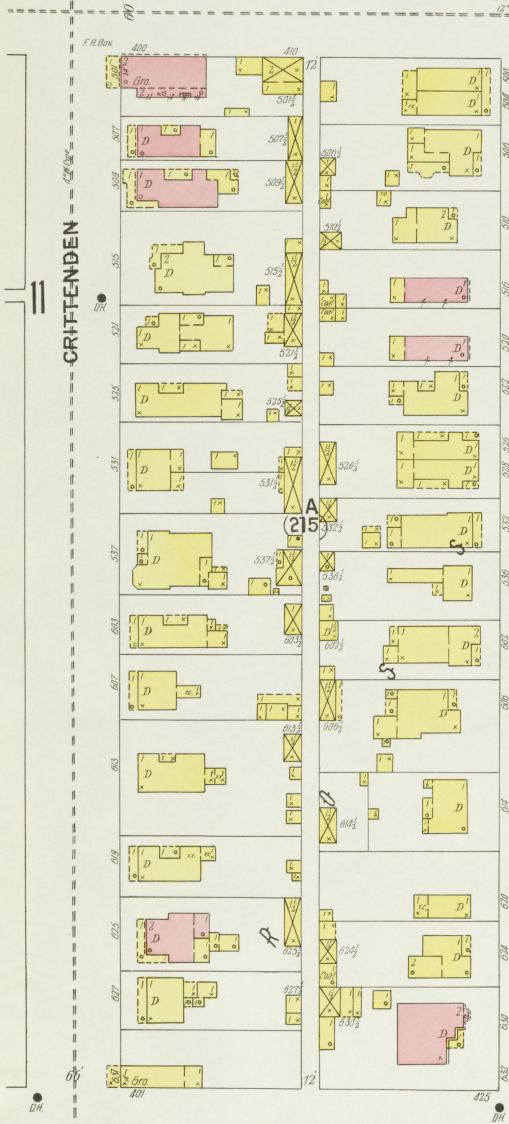
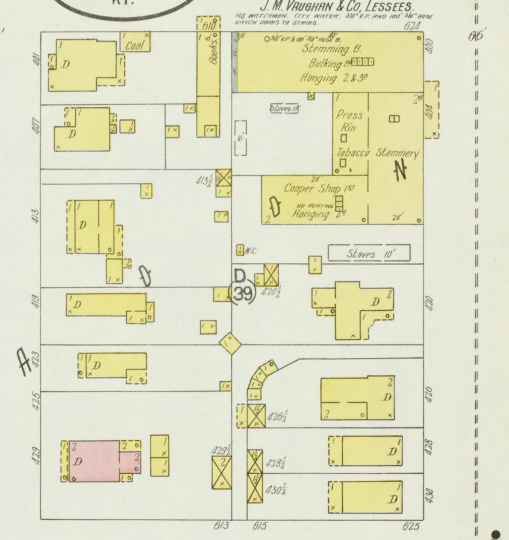
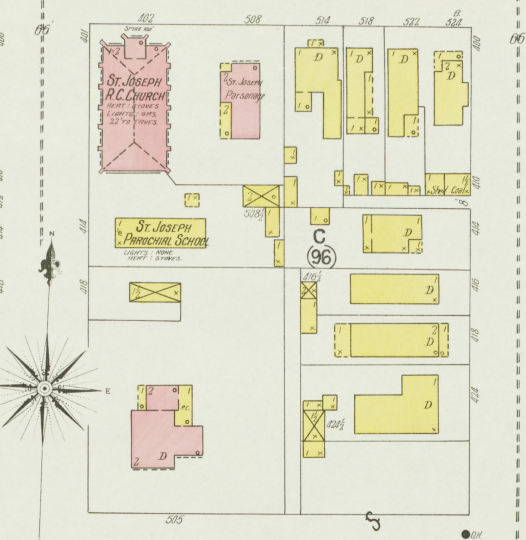
CRITTENDEN

Scale of Feet.



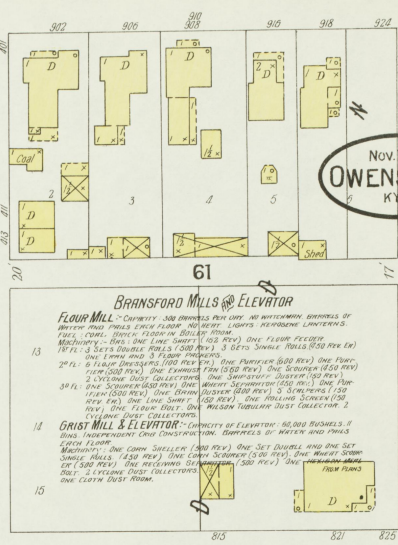
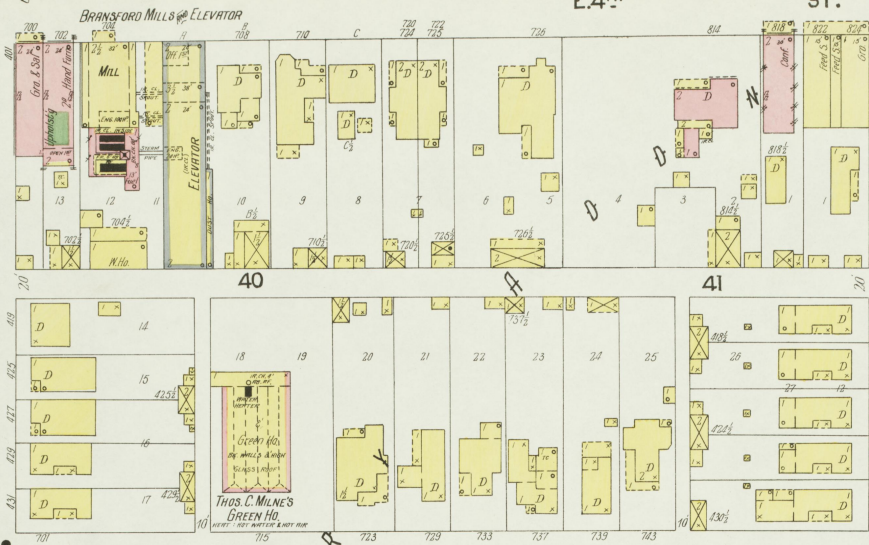
Nov 1900
OWENSBORO
KY.

J. P. & Q. D. VAUGHAN, TOBACCO STEMMERY
J. M. VAUGHAN & Co. LESSEES.

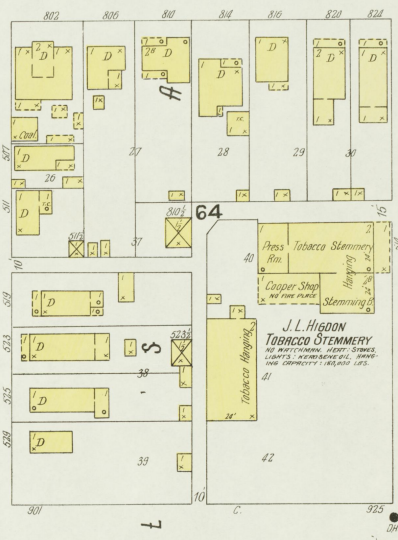
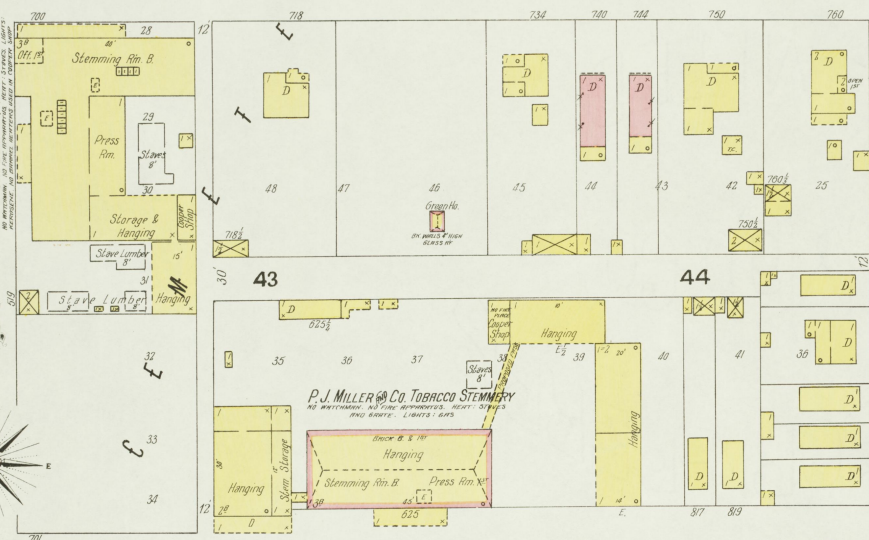


Nov. 1900
OWENSBORO
KY.

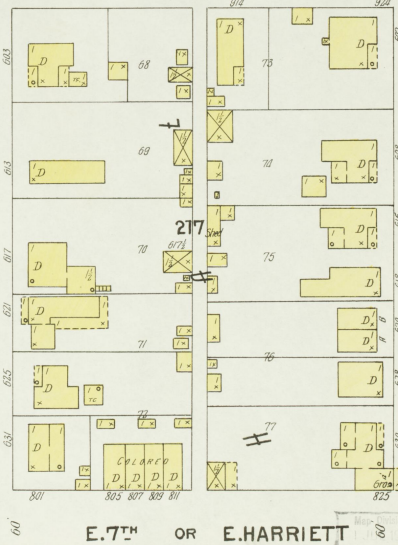
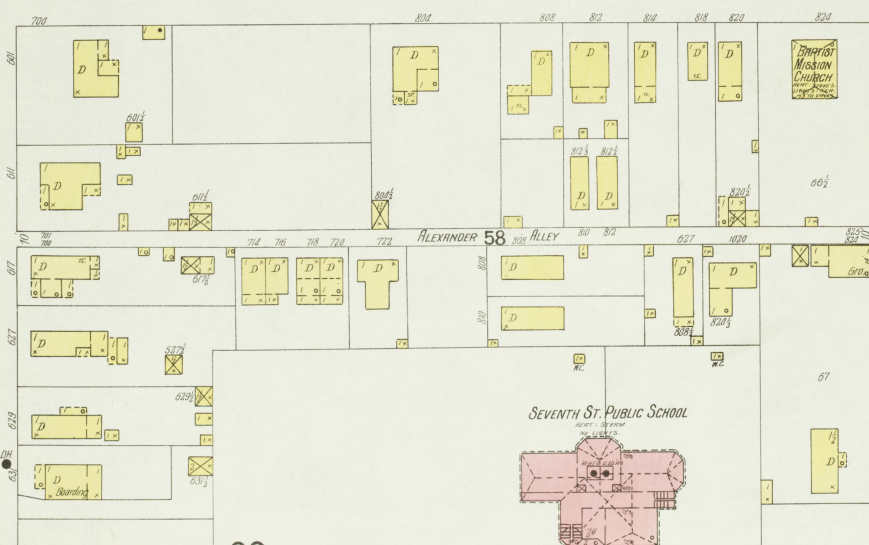
E. 4TH ST.



E. 5TH ST.

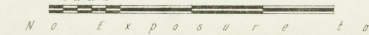


E. 6TH ST.



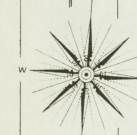
E. 7TH OR E. HARRIETT

20 Scale of Feet



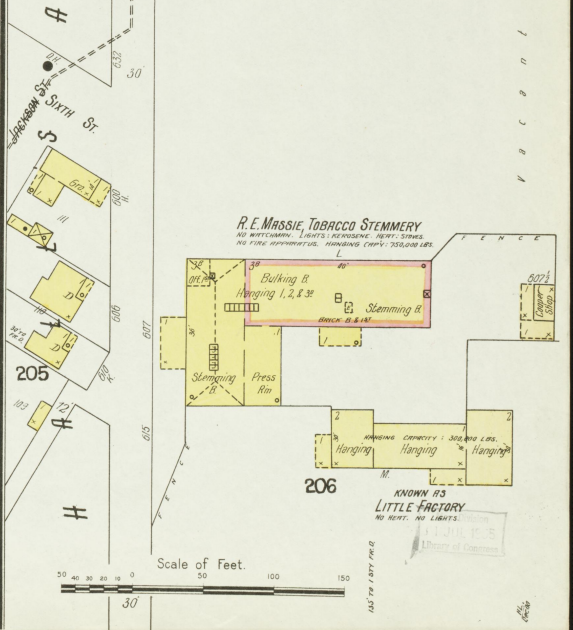
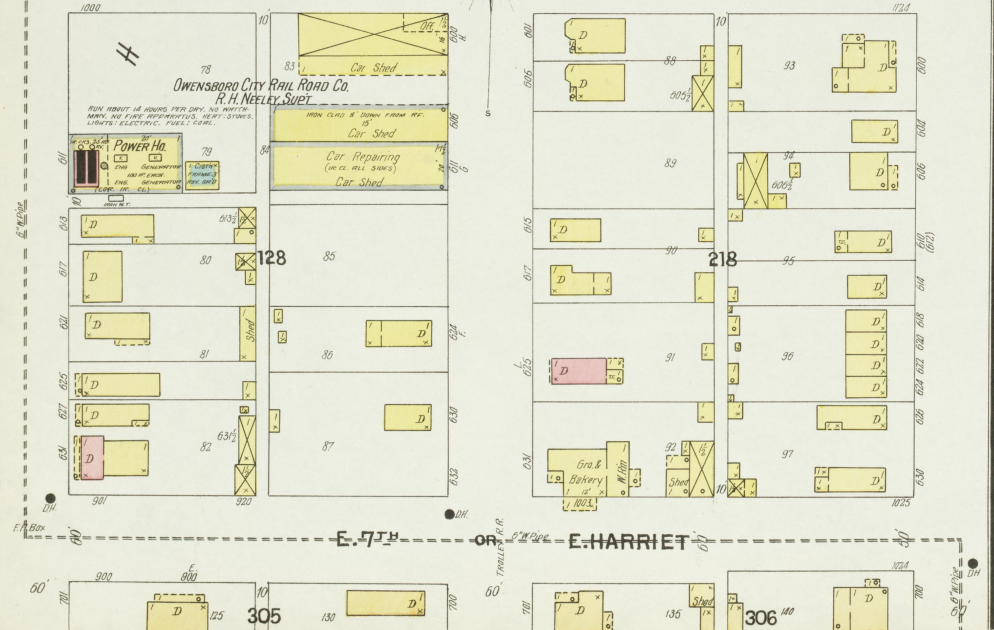
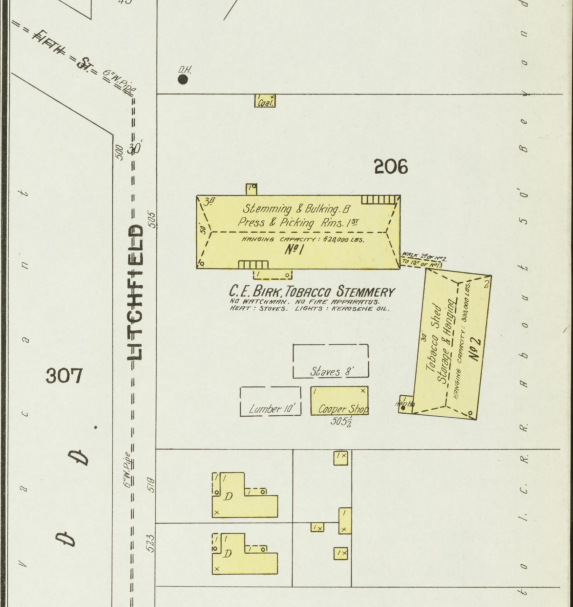
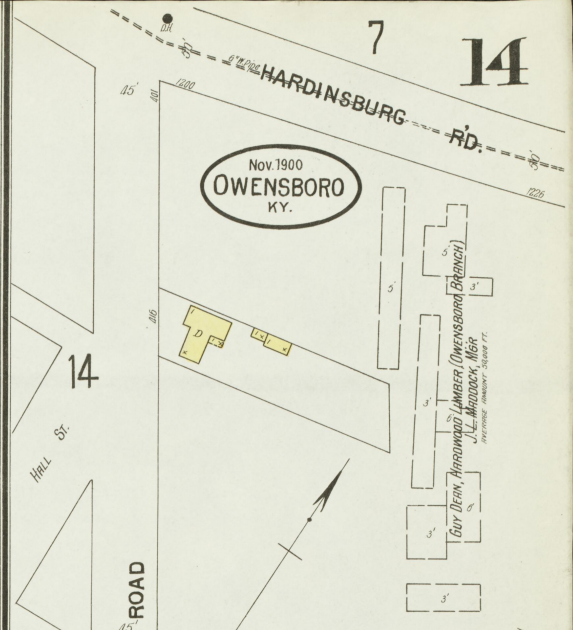
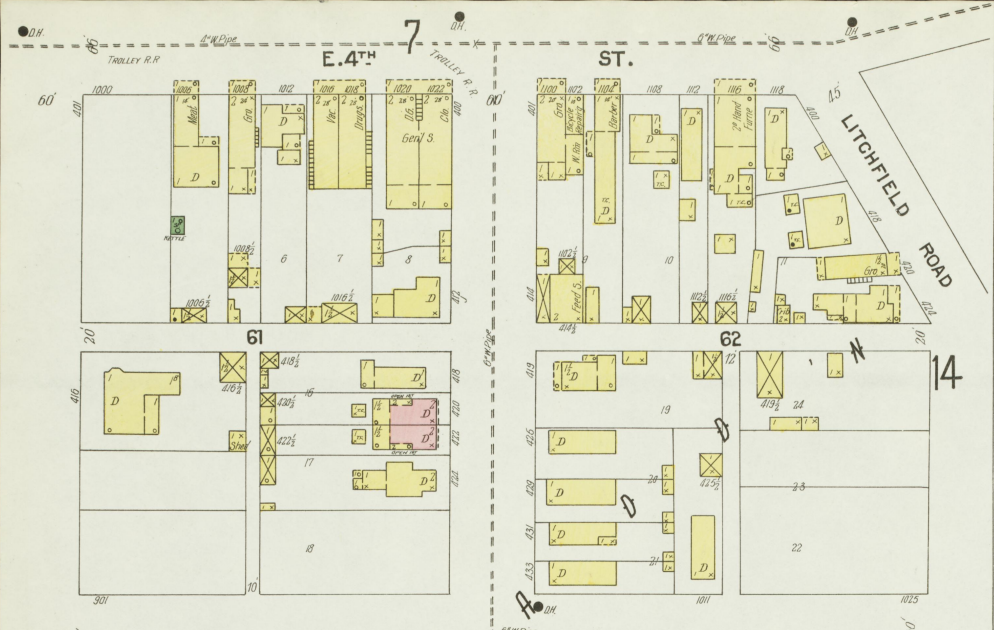
No Exposure to S

TRIPLETT
J. H. BARRATT & Co. TOBACCO STEMMERY
J. G. BENNETT, MGR.



E. 7th or E. Harriett St.

HATHAWAY

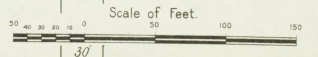


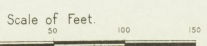
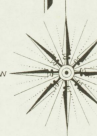
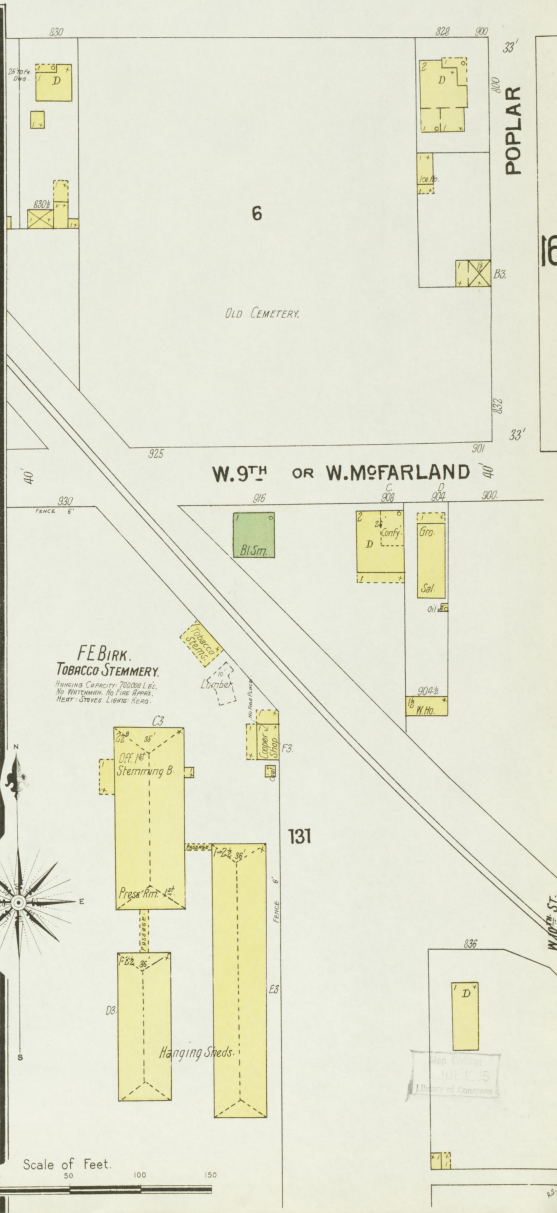
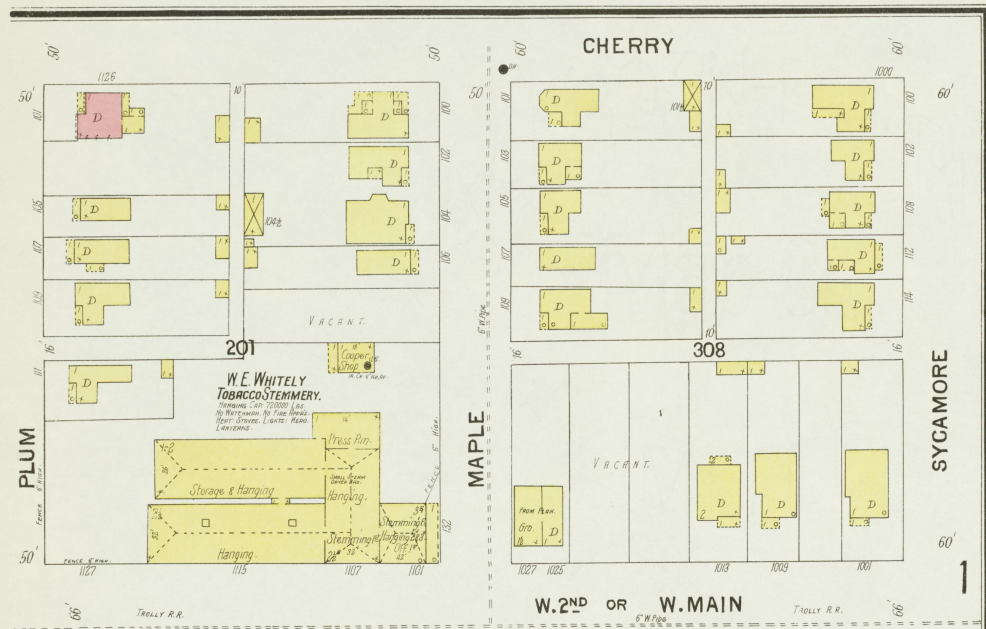
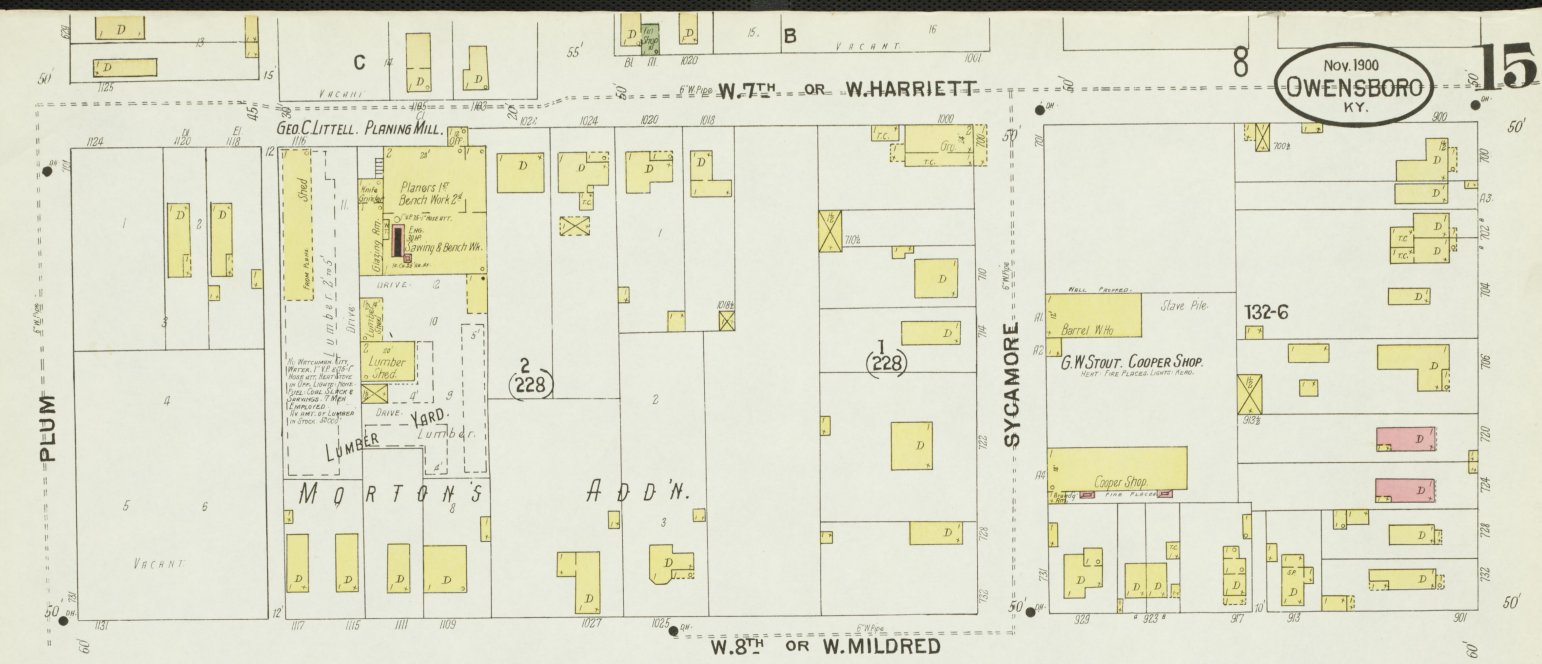
SMALL D FLYNN TOBACCO STEMMEY
 CONTINENTAL TOBACCO CO. LESSEE
 HANGING CASES, SHEDS, LIGHTS, STOVES, PRESSING MACHINES, HAY STAKES, STOVES.

Nov 1900
 OWENSBORO
 KY.

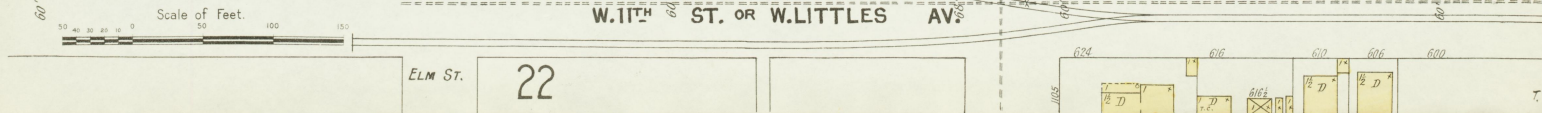
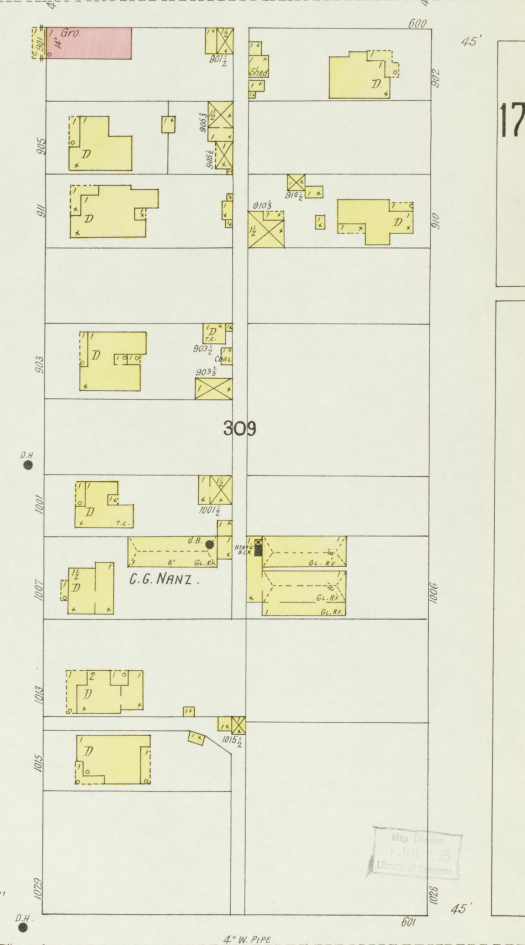
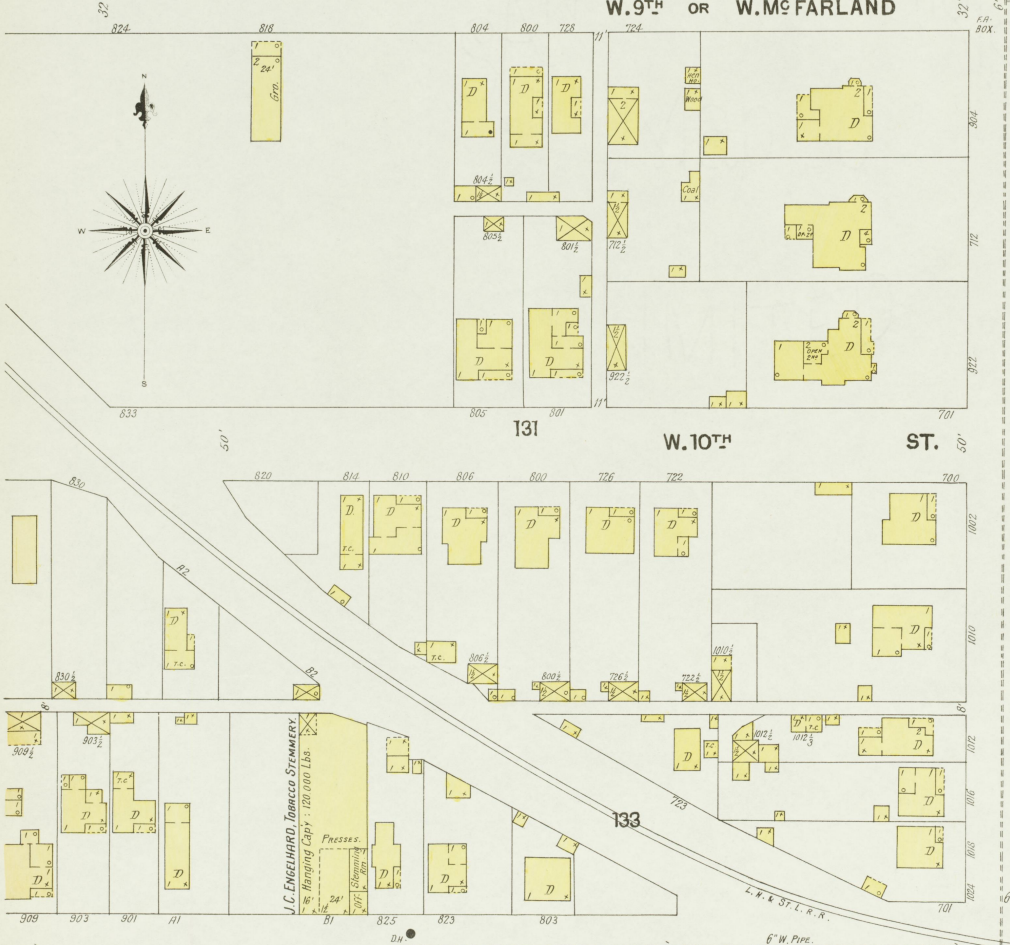
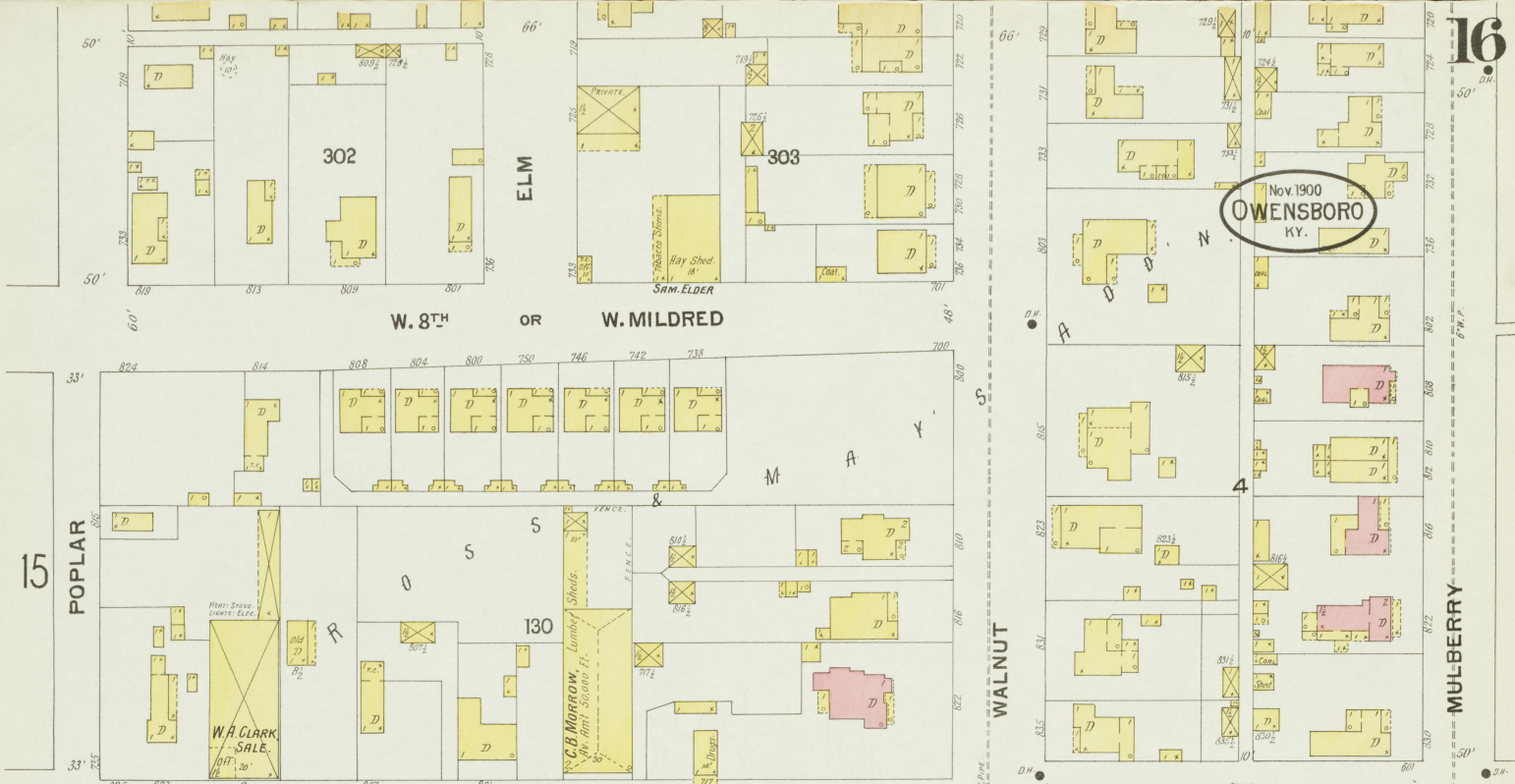
Slamming & Bulking B
 Press & Packing Rms. 19
 NO WETWORK, NO FIRE APPARATUS.
 NO. 1
 C. E. BARK TOBACCO STEMMEY
 NO WETWORK, NO FIRE APPARATUS.
 HEAT - STOVES, LIGHTS - KEROSENE OIL
 Tobacco Shed
 Slammings & Hanging
 Slammings & Hanging
 NO. 2

Bulking B
 Hanging 1, 2, & 3e
 Slammings B
 Press Rm.
 Slammings B
 Hanging
 Hanging
 Hanging
 R. E. MASSIE TOBACCO STEMMEY
 NO WETWORK, LIGHTS - KEROSENE, HEAT - STOVES
 NO FIRE APPARATUS, HANGING CASES - 1500 LB. CAP.
 KNOWN AS
 LITTLE FACTORY
 NO HEAT, NO LIGHTS.





Nov. 1900
OWENSBORO
KY.



Nov. 1900
OWENSBORO
KY.

GROVE AV.

AND MAY S

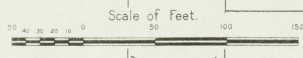
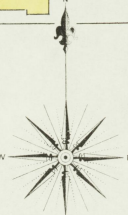
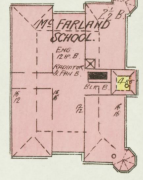
A D D

W. 9TH ST. OR W. McFARLAND

MULBERRY

LOCUST

OWENSBORO HIGH SCHOOL

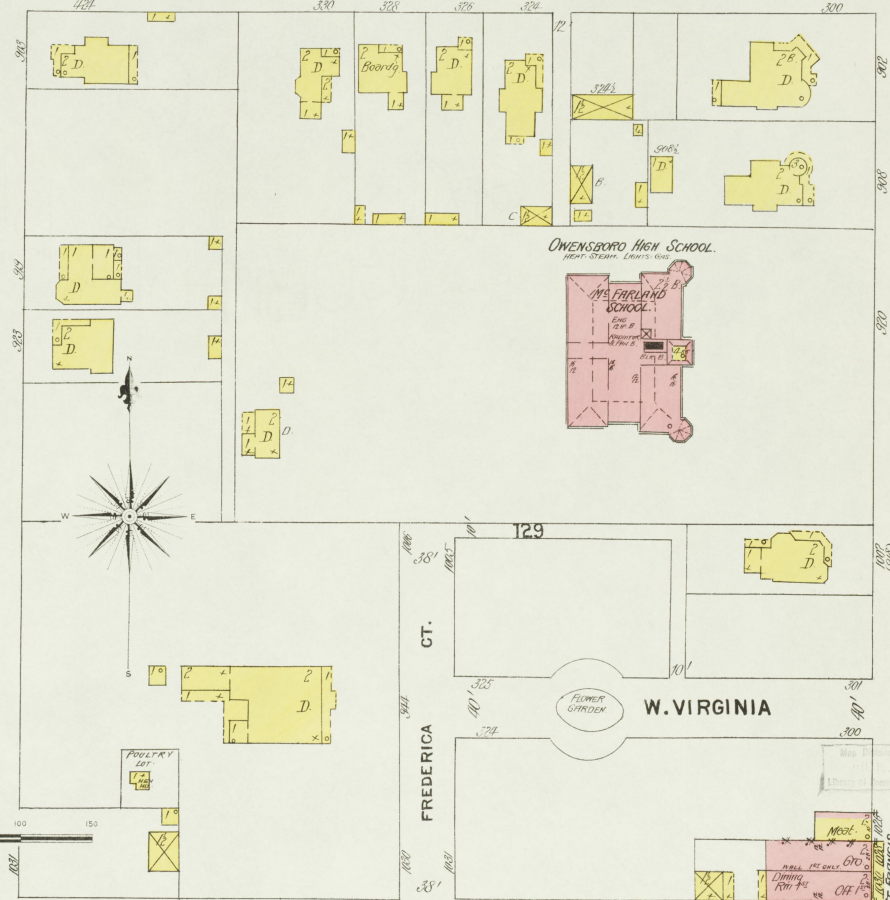
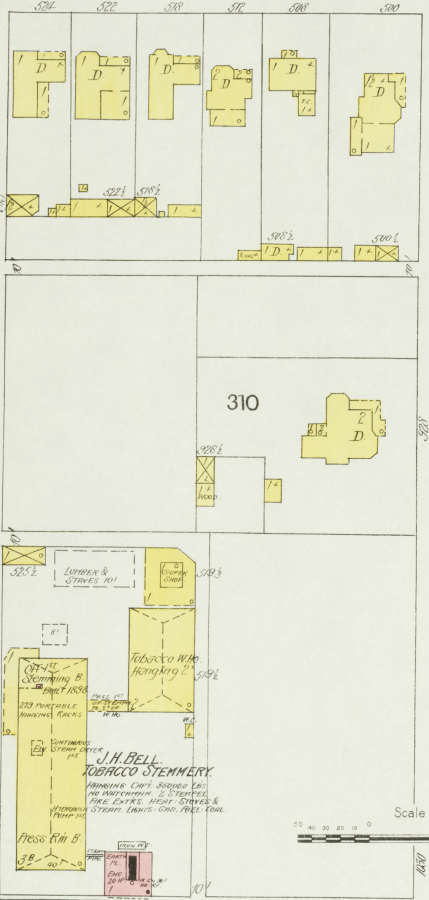
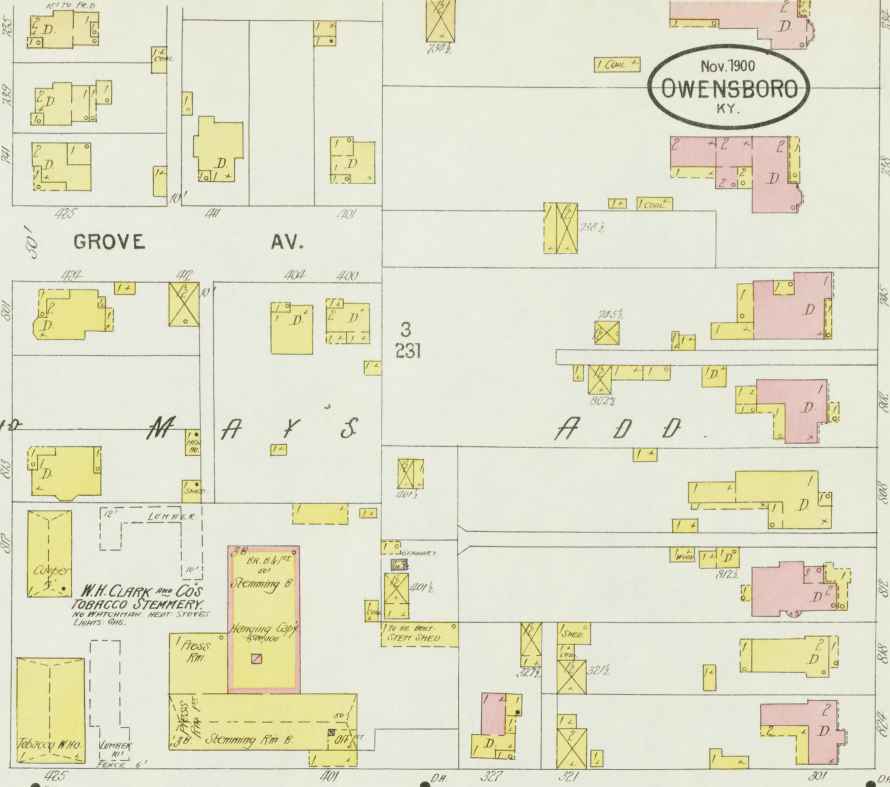
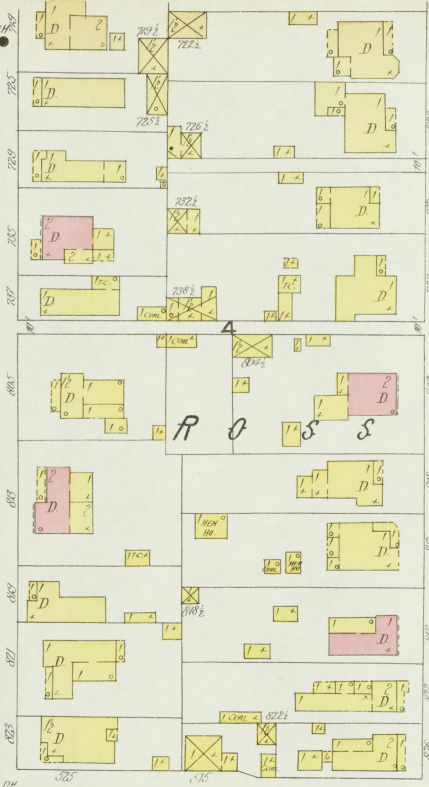


FREDERICA

W. VIRGINIA

W. 11TH ST. OR W. LITTLES AV.

FR. DWG. BEYOND.



10 W. 7TH OR W. HARRIETT

11 E. 7TH OR E. HARRIETT 18

Nov 1900
OWENSBORO
KY.

W. 8TH OR W. ANTHONY

W. 9TH OR W. MCFARLAND E. 9TH OR E. MCFARLAND

FREDERICA

ALLEN

DAVIES

17

MOORE'S ADD.

(95)

Scale of Feet

92-2

91-1

93-2

94

FREIGHT DEPOT
NO PATRONS. NIGHT OPERATOR ON DUTY.
NO FIRE APPS. NIGHT STOVE IN OFF. LEAVES FLEET.

TOBACCO STEMMERY

TOBACCO W/O

THE CONTINENTAL TOBACCO LEAF DEPOT

TOBACCO STEMMERY

W. VIRGINIA

E. VIRGINIA

Tennis Court

LOG YARD

WHEEL

STEAM DRY NO.

STROKE STOCK

STROKE STOCK

STROKE STOCK

STROKE STOCK

STROKE STOCK

STROKE STOCK

STROKE STOCK

STROKE STOCK

STROKE STOCK

STROKE STOCK

STROKE STOCK

STROKE STOCK

STROKE STOCK

STROKE STOCK

STROKE STOCK

STROKE STOCK

STROKE STOCK

STROKE STOCK

STROKE STOCK

STROKE STOCK

STROKE STOCK

STROKE STOCK

STROKE STOCK

STROKE STOCK

STROKE STOCK

STROKE STOCK

STROKE STOCK

STROKE STOCK

STROKE STOCK

STROKE STOCK

STROKE STOCK

STROKE STOCK

STROKE STOCK

STROKE STOCK

STROKE STOCK

STROKE STOCK

STROKE STOCK

STROKE STOCK

STROKE STOCK

STROKE STOCK

STROKE STOCK

STROKE STOCK

Nov 1900
OWENSBORO
KY.

E. 7TH OR E. HARRIET

E. 7TH OR E. HARRIET

E. 9TH OR E. MCFARLAND

E. VIRGINIA

CLAY

BOLIVAR

TRIPLETT

TRIPLETT

SWEENEY

SWEENEY

SWEENEY'S

SWEENEY'S

E. VIRGINIA

SWEENEY

GRAFFITH

19

(72)

20

20

20

73

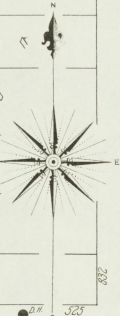
74

313

220

221

Scale of Feet.
0 50 100 150



DION'S EVANG. LUTHERAN CHURCH

R.E. O'FLYNN, TOBACCO STEMMERY
NO WATCHMAN, NO FIRE ALARMS, HEAT, STEAM & STOVE, NO LIGHTS.

219

A.J. OBERHAUSEN, SHINGLE MILL
NO WATCHMAN, NO FIRE ALARMS, HEAT, STEAM & STOVE, NO LIGHTS.

U.S. CREWS & CO. STOCK YARDS (Leased Land)

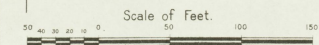
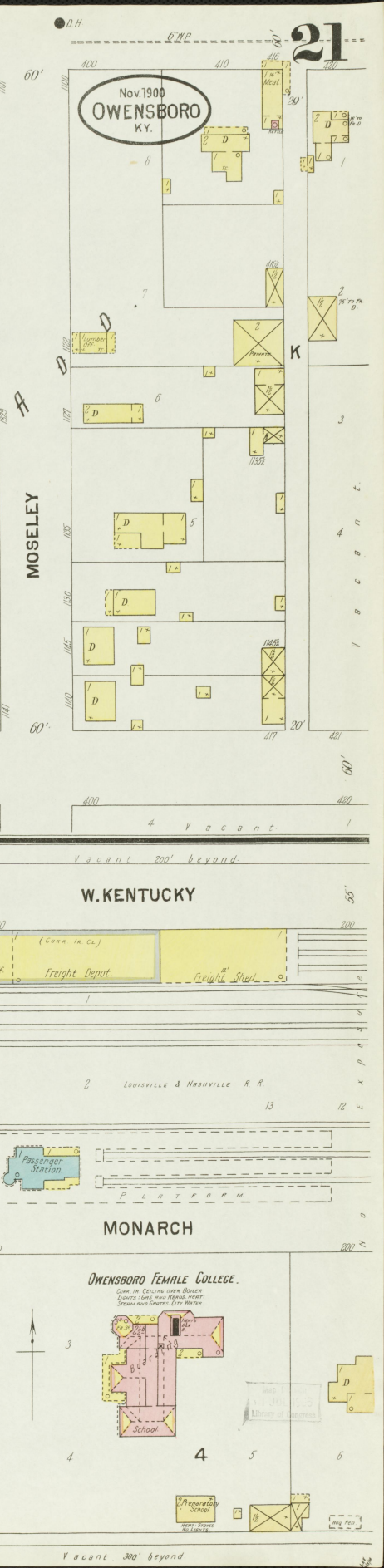
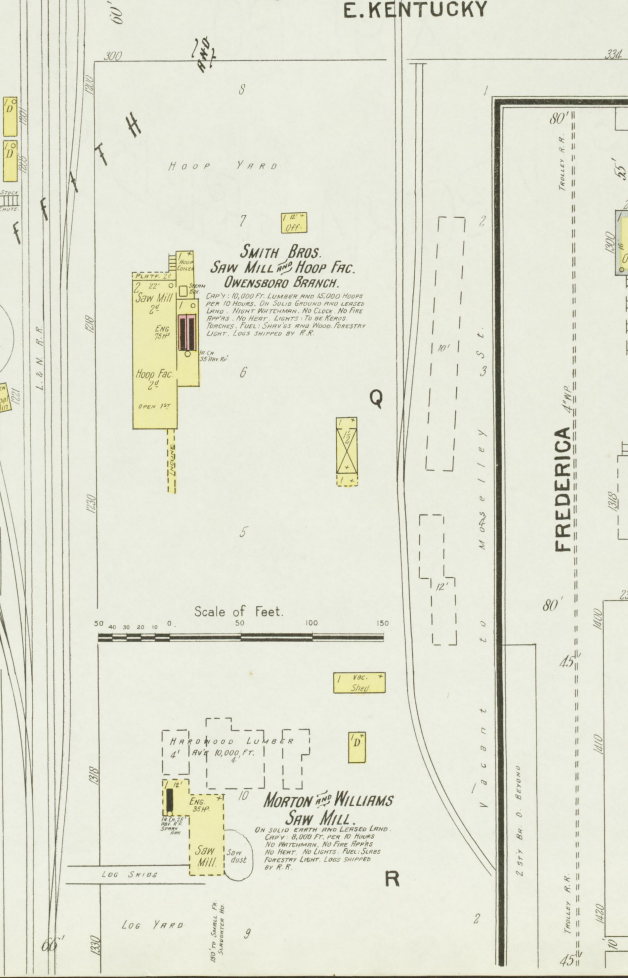
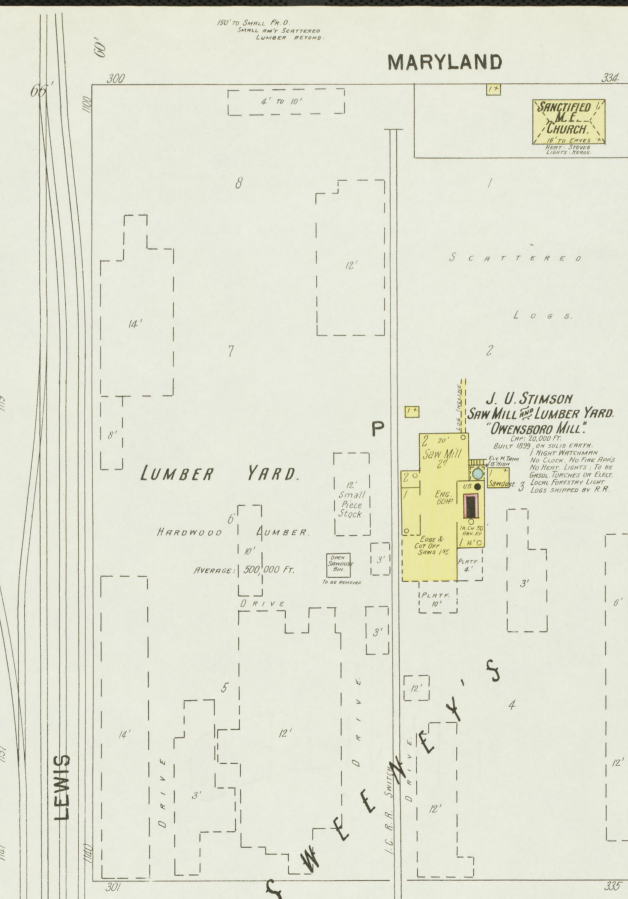
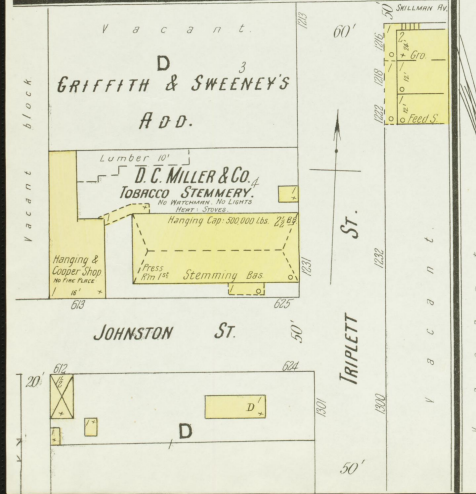
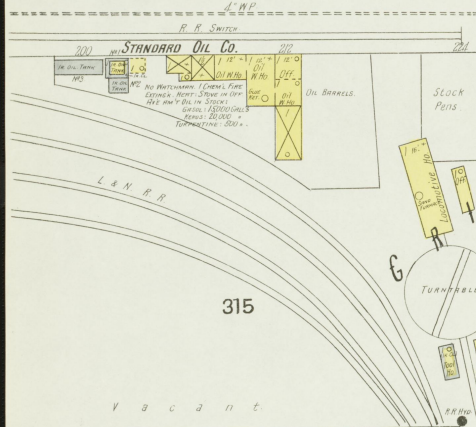
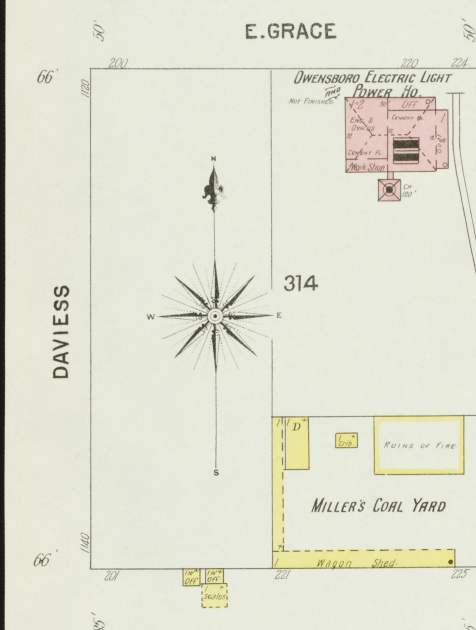
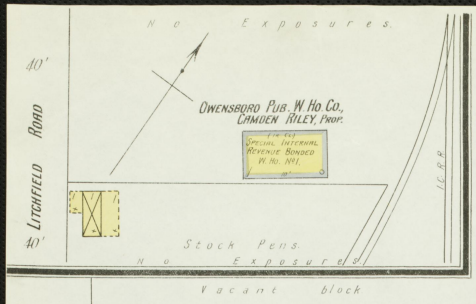
JOHN D. ELLIOTT, TOBACCO STEMMERY
LUMBER NO WATCHMAN, 2 MEN SLEEP IN ALSO HEAT, STEAM & STOVE, CITY WATER & GAS, 10' TO 12' DEEP, LUMBER & PILE CONTINUOUS BEST STEAM POWER, 10' TEMP 100° REFRIGERATED STEAM LET IN DAY.

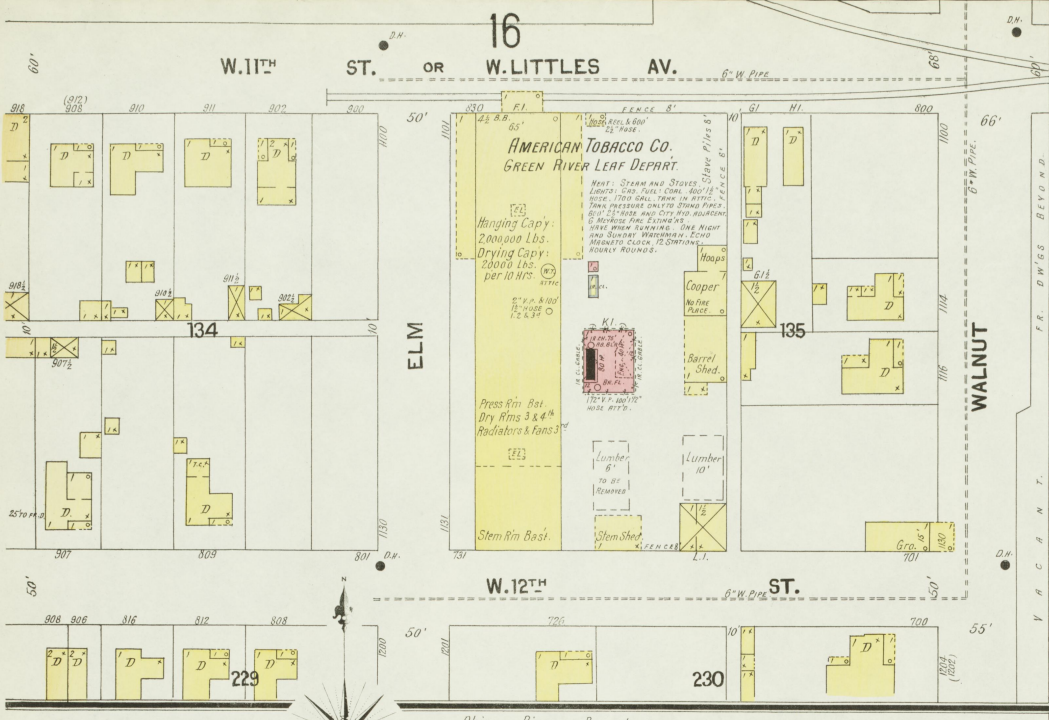
CITY PRISON

CITY WORK HOUSE

JOHN D. ELLIOTT, TOBACCO STEMMERY

LIBRARY OF CONGRESS



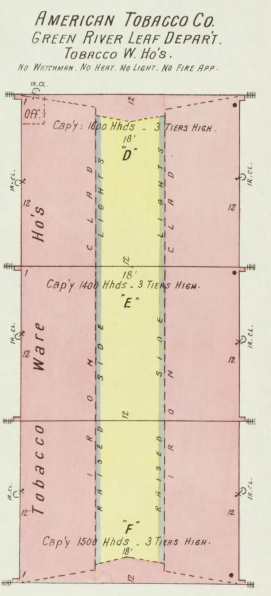
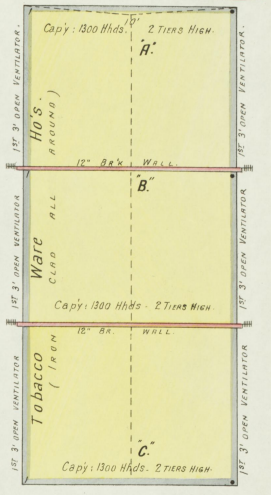


150' to WALNUT ST.

American Tobacco Co's Grounds to Walnut St.

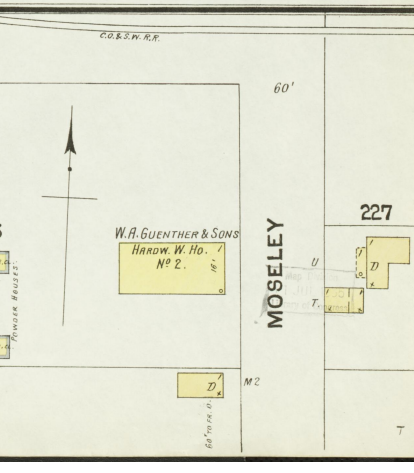
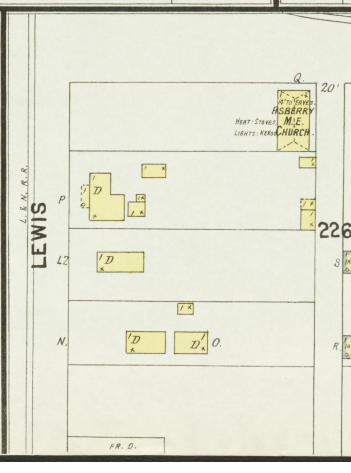
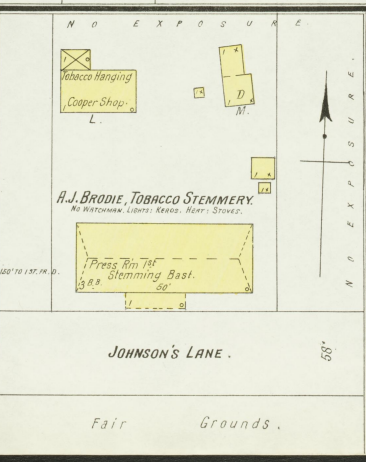
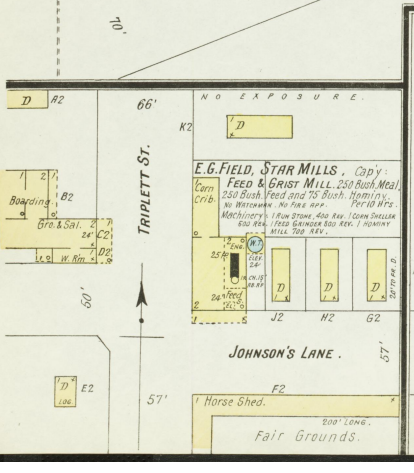
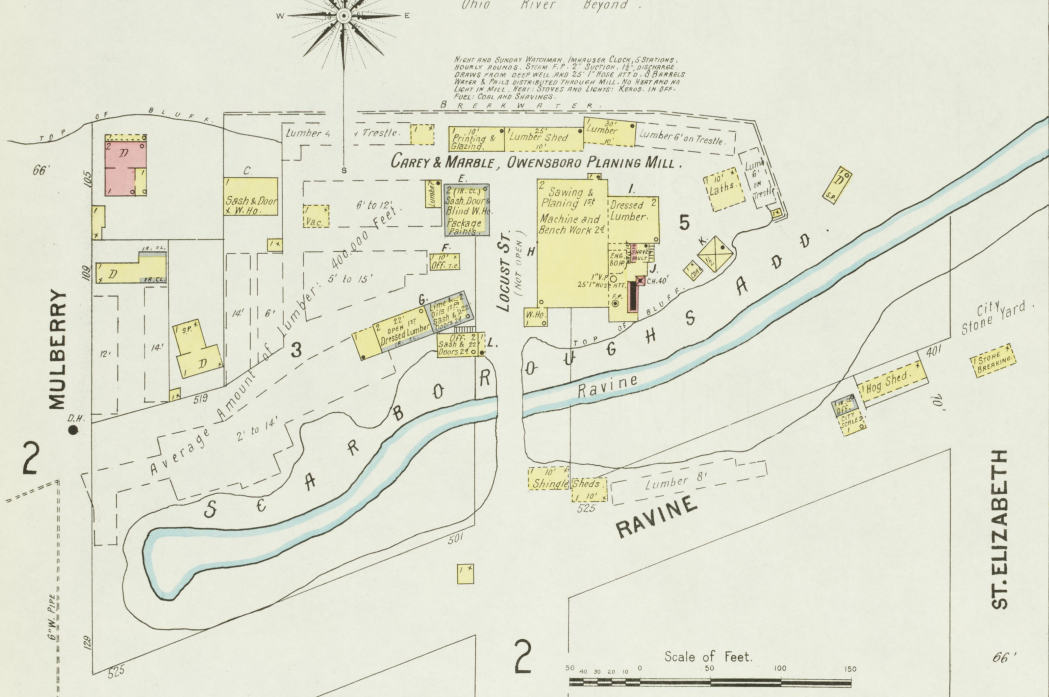
Nov. 1900

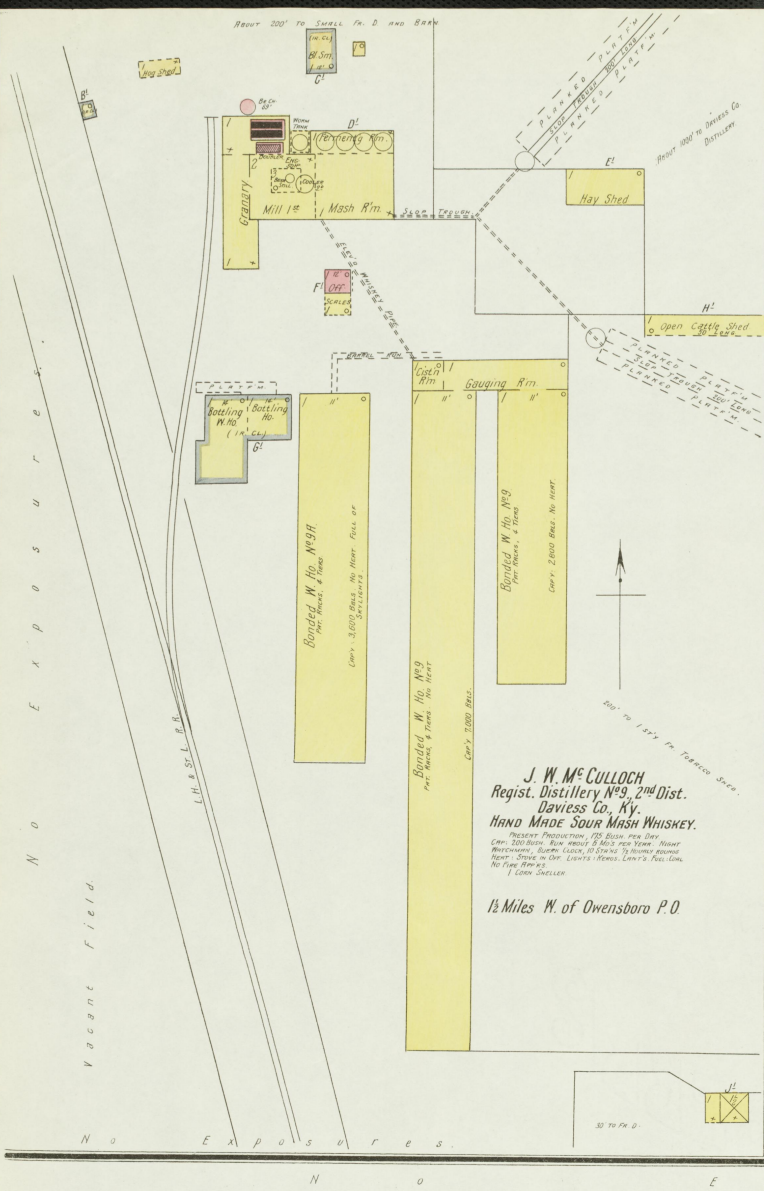
OWENSBORO
KY.



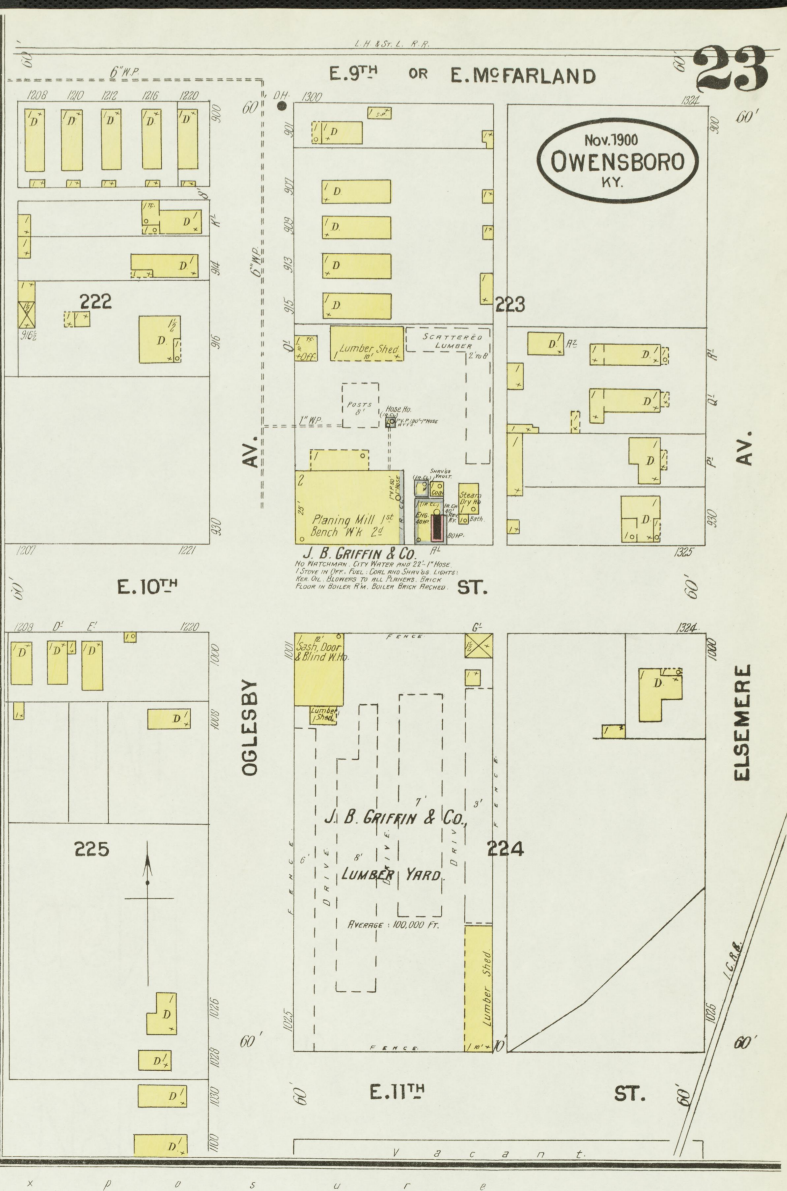
AMERICAN TOBACCO CO. GREEN RIVER LEAF DEPART. TOBACCO W. HO'S.

NO WATCHMAN. NO HEAT. NO LIGHT. NO FIRE APP.



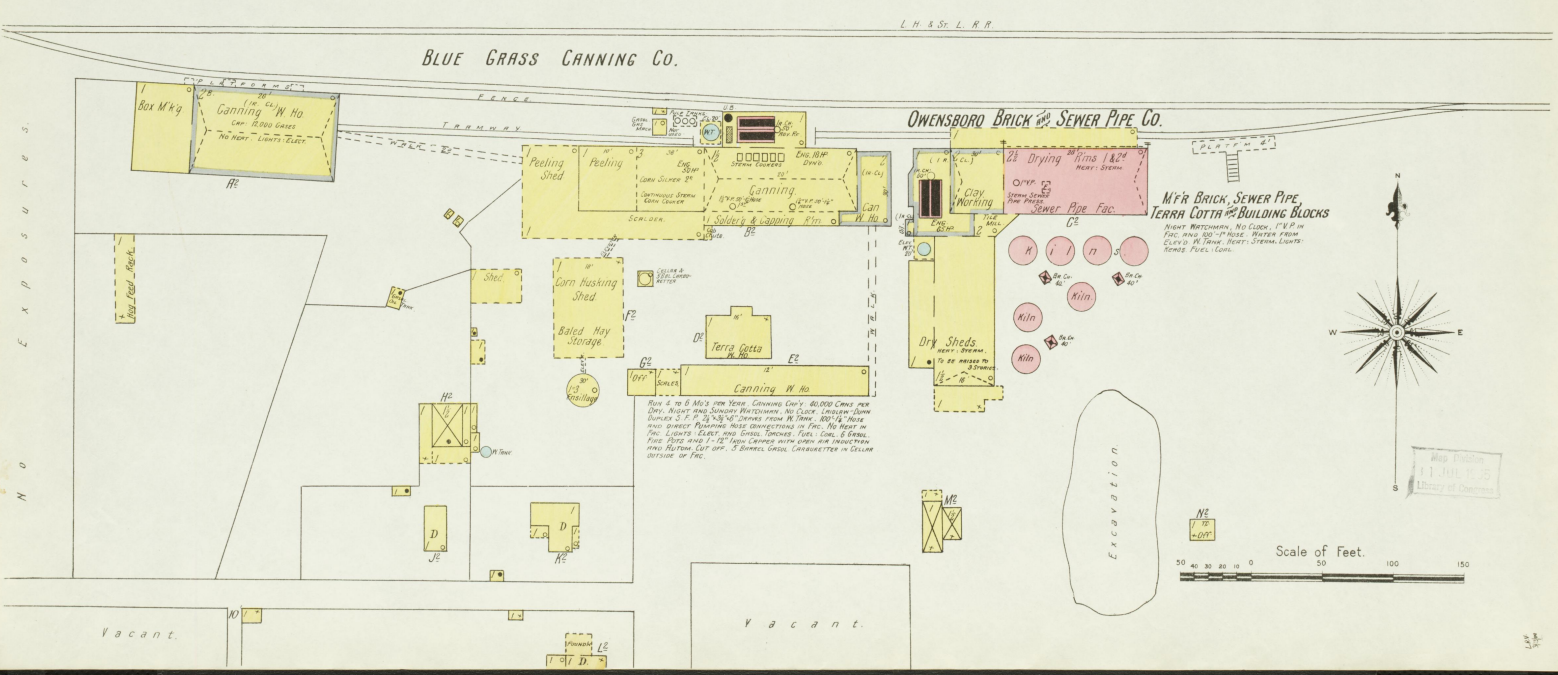


J. W. McCULLOCH
 Regist. Distillery No. 9, 2nd Dist.
 Daviess Co., Ky.
HAND MADE SOUR MASH WHISKEY.
 Present Production, 750 Bushels Per Day.
 Cap. 2000 Bushels. Raw MASH & BUCK AND WHEAT. MASH
 MOTTLED, BUCK, WHEAT, ALL STIRRED BY HANDS BEHIND
 HEAT. 70° TO 80°. LEAST 48 HOURS. LEAST 1
 NO FIRE. NO COAL. NO STEAM. NO
 1/2 Miles W. of Owensboro P.O.

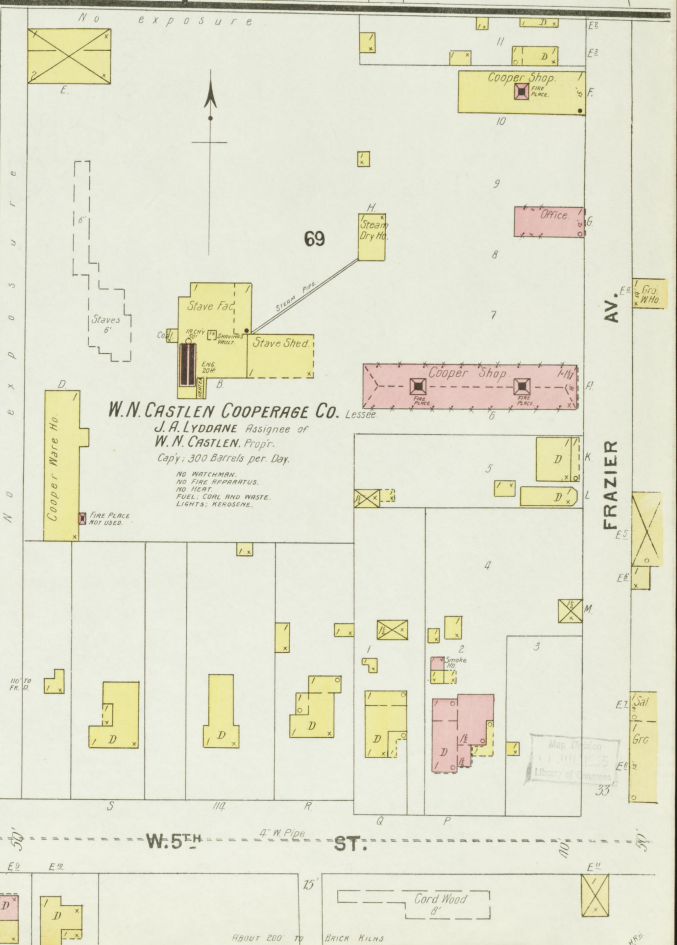
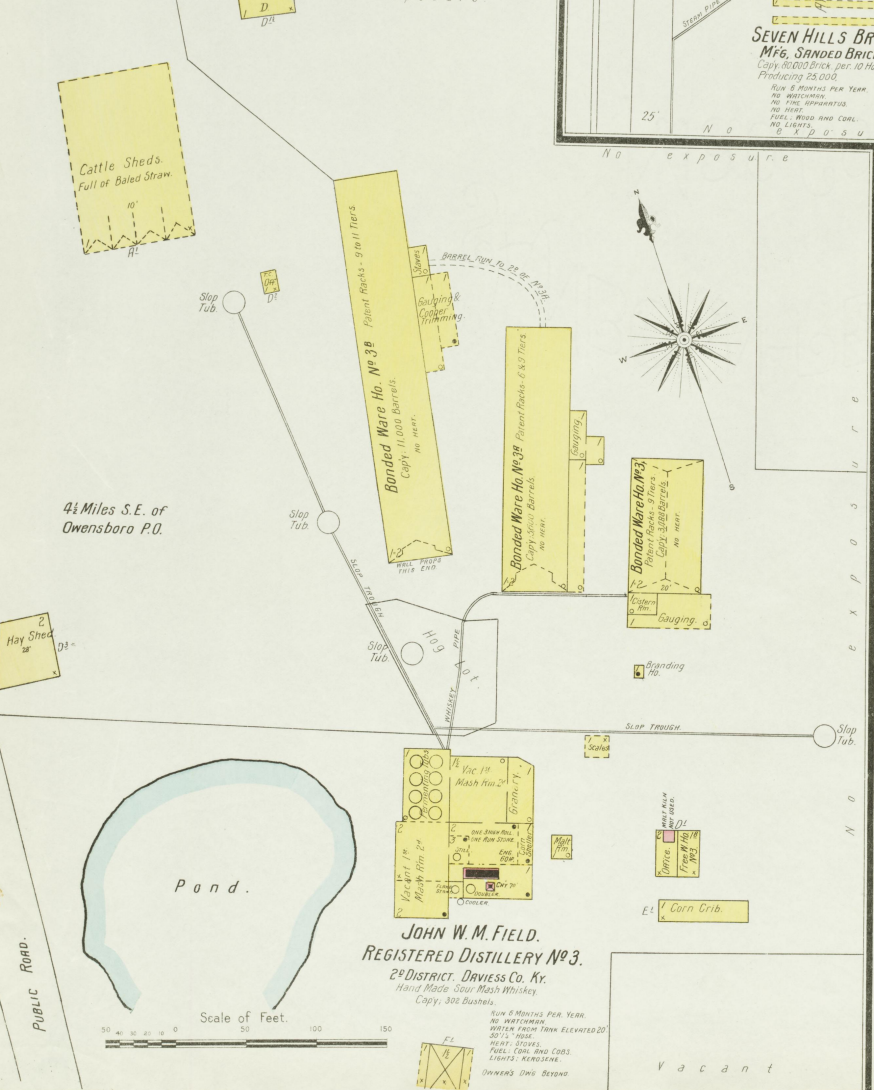
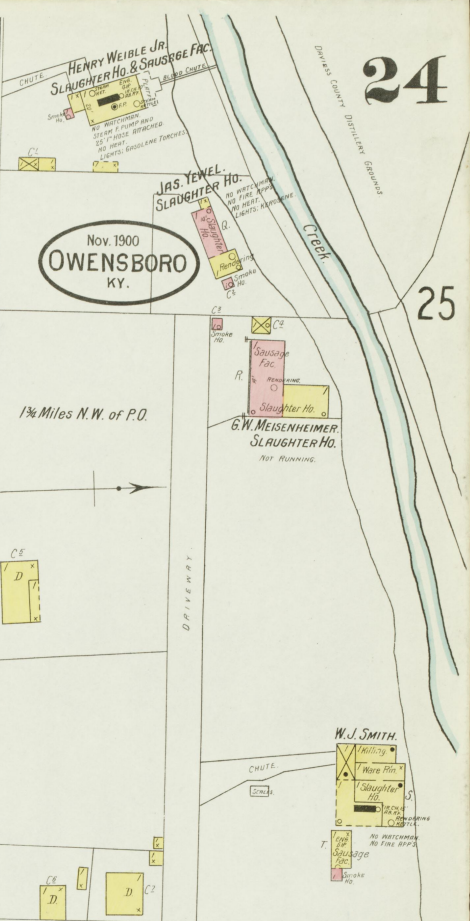
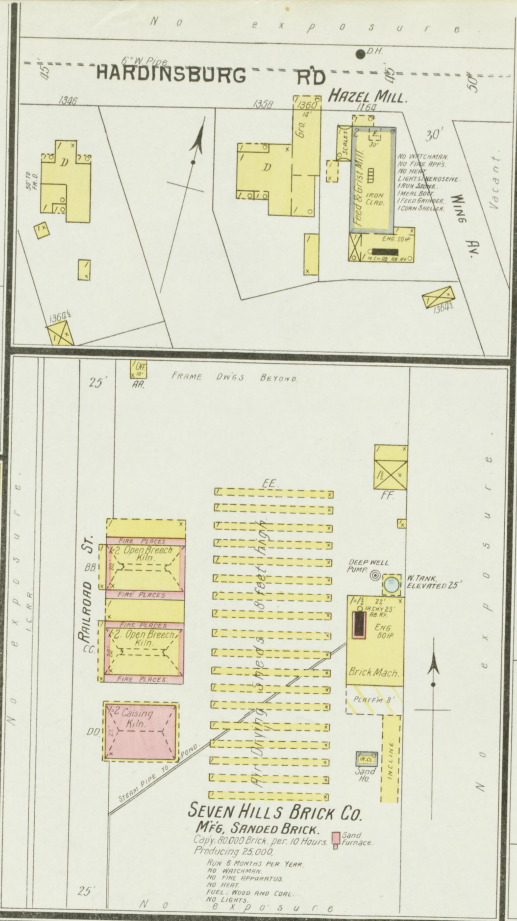
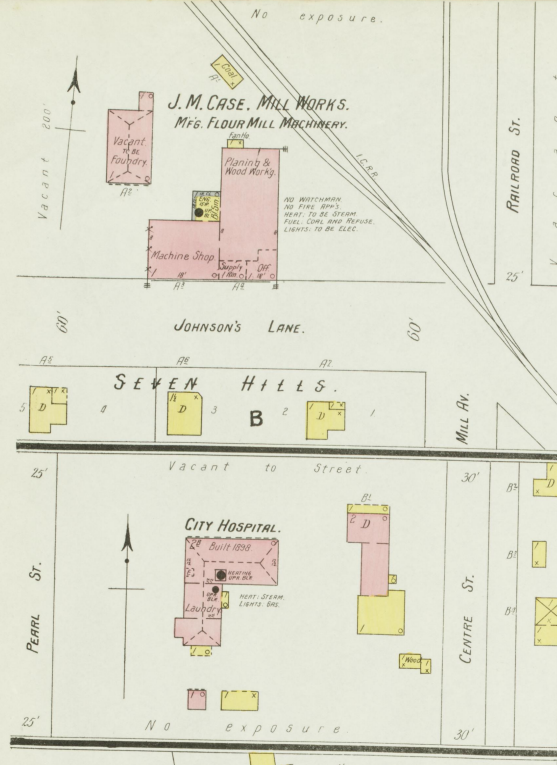


J. B. GRIFFIN & CO.
 No. 1000 Main. City Water and 2 1/2" Hose
 1/2 Mile W. of Pk. D. (See map showing location)
 For Oil, Blowers to all Pumps. Since
 Found in Owensboro, Ky. Since 1880.

J. B. GRIFFIN & CO.
LUMBER YARD.
 REVENUE 100,000 FT.



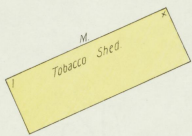
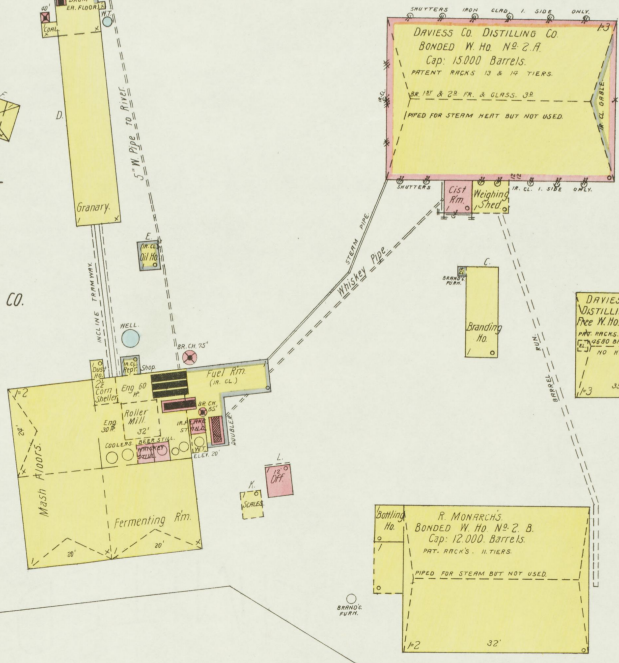
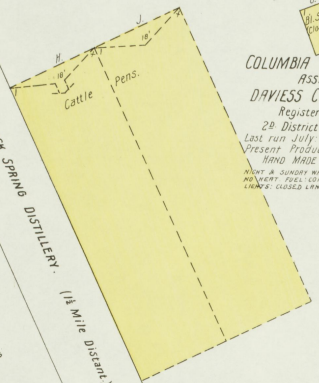
Scale of Feet.
 50 40 30 20 10 0 50 100 150



Nov. 1900
OWENSBORO
KY

1 1/2 Miles N.W. of P.O. Owensboro, Ky.

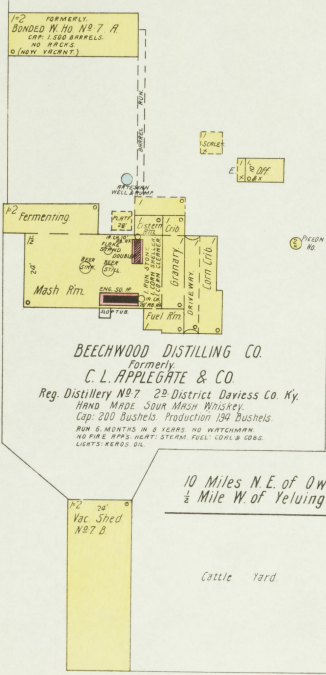
COLUMBIA TRUST & FINANCE CO.
ASSIGNEE OF THE
DAVIESS CO. DISTILLING CO.
Registered Distillery No. 2
2nd District Daviess County, Ky.
Last run July 1900. Cap. 825 Bushels
Present Production 465 Bushels
HAND MADE SOUR MASH WHISKEY
NOTE: A SUNDAY WATCHMAN BUREAU CLOCK & 512'S
AND HEAVY FUEL VALVE COGS AND FIRE MAPS
LINKS: CLOSED LANTERNS & CANDLE.



2 1/2 Miles N.W. of P.O.

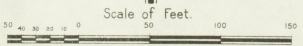
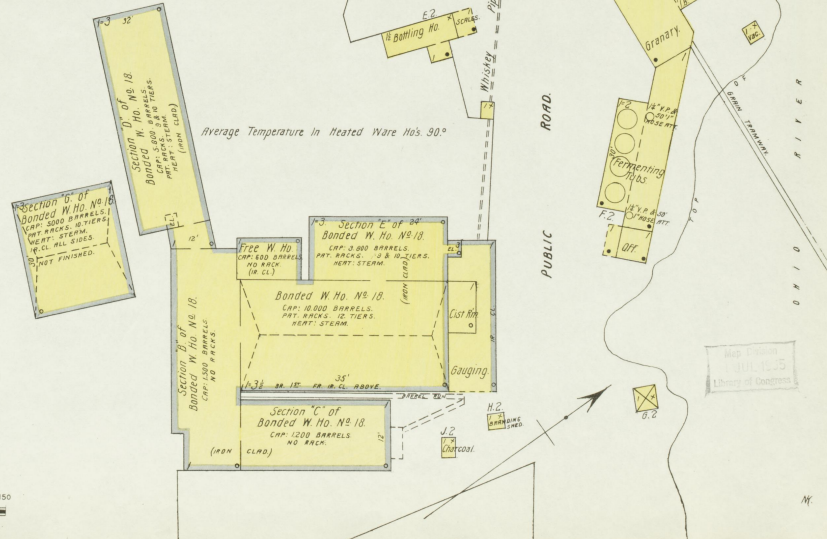
ROCK SPRING DISTILLING CO.
A ROSENFELD, Prest.
Reg. Distillery No. 18 2nd District Daviess Co. Ky.
HAND MADE SOUR MASH WHISKEY
Cap. 1200 Bushels. Produces 700 Bush's
RUN ABOUT 3 MONTHS PER YEAR. NIGHT &
SUNDAY WATCHMAN AND CLOCK & 512'S. FULL
COIL & COIL LIGHTS. HEADS IN CLOSED LAMPS
200 POUNDS BURN FROM DISTILLATION. DISTILLER
DRAWS FROM EASTERN TOWN CILLS. CAPACITY
WHEEL HOLE 2 SETS 3 RUN ROLLS. 500 REE
1 CORN SHELLER 1 CORN CLEANER 1 W/4 CLEANER.

Average Temperature in Heated Ware Ho's 90°



BEECHWOOD DISTILLING CO.
Formerly
C. L. APPLEGATE & CO.
Reg. Distillery No. 7 2nd District Daviess Co. Ky.
HAND MADE SOUR MASH WHISKEY
Cap. 200 Bushels. Production 194 Bushels
RUN 5 MONTHS IN 8 YEARS. NO WATCHMAN
NO FIRE. HEAVY HEAT STEAM. FULL COIL & 512'S.
LIGHTS. KEROSENE.

10 Miles N.E. of Owensboro &
1/2 Mile W. of Yelington Ky.

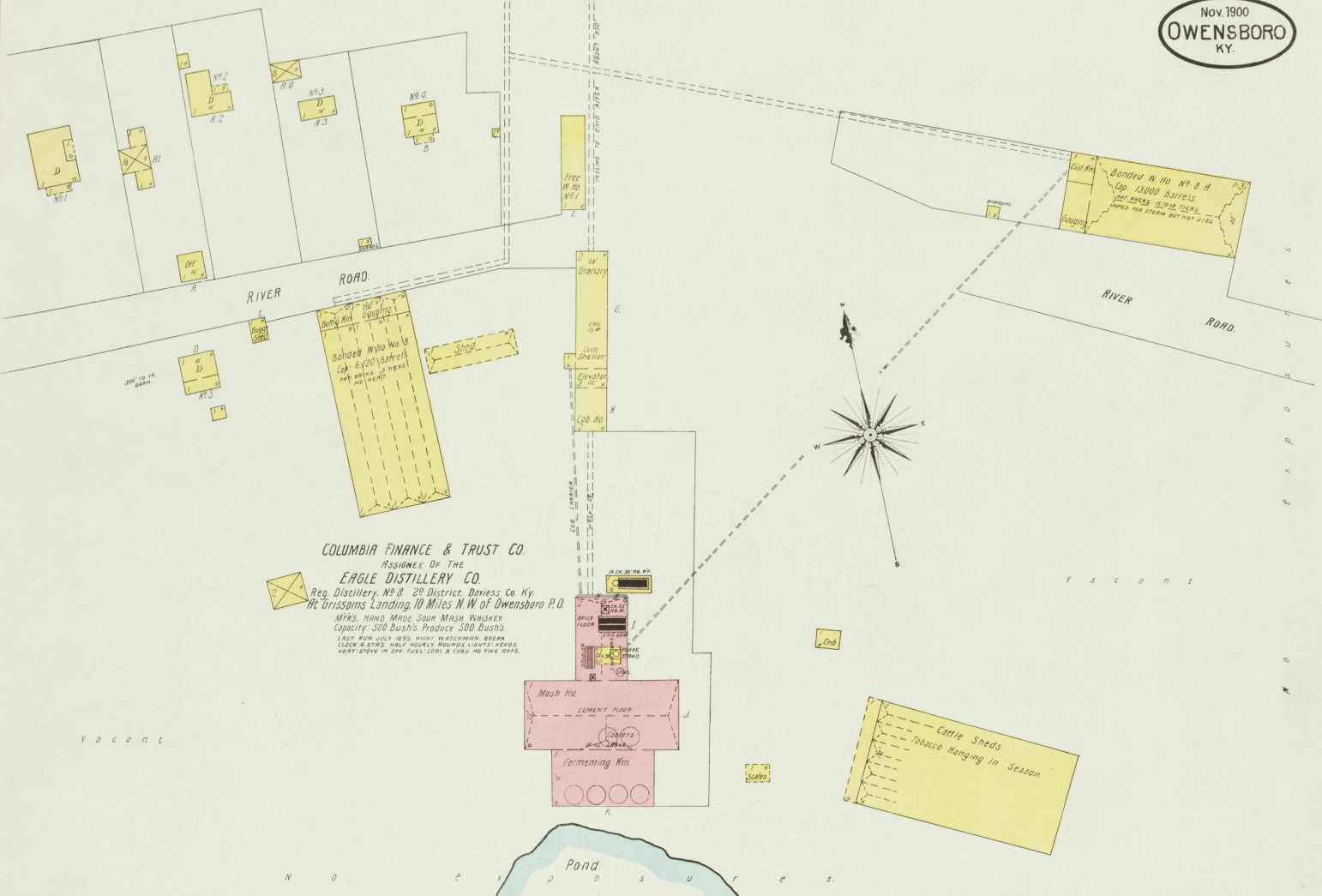


Map of Distillery
No. 18-5
Library of Congress

Nov. 1900
OWENSBORO
KY.

No Exposure to Ohio River.

V a c a n t .

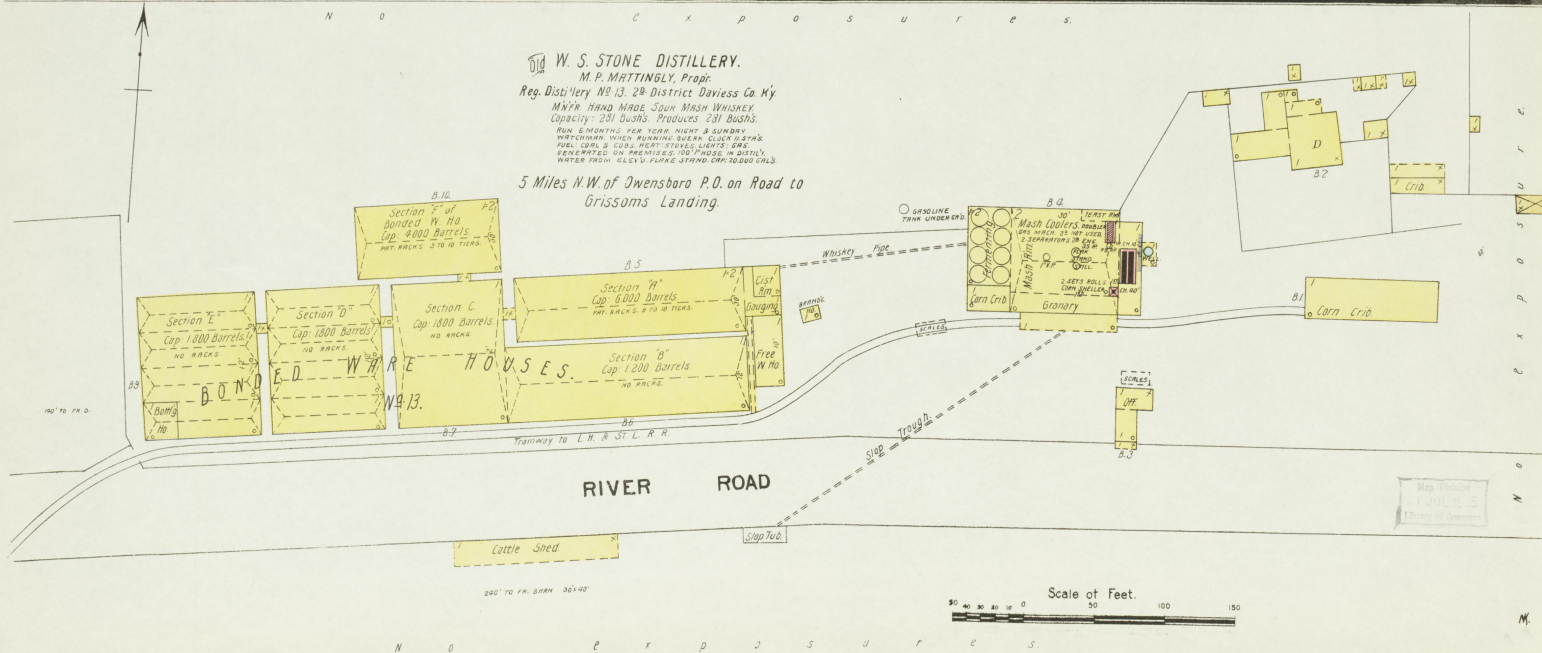


N o e x p o s u r e s .

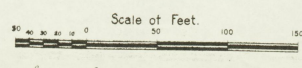
W. S. STONE DISTILLERY.
 M. P. MATTINGLY, Propr.
 Reg. Distillery No. 13, 2d District, Daviess Co. Ky.

MFRS. HAND MADE SOUR MASH WHISKEY.
 Capacity: 201 Bushels. Produce 201 Bushels.
 RUN 6 MONTHS PER YEAR. NIGHT & SUNDAY
 WATCHMAN. WIND RUNNING BEER. CLOCK & STOVE.
 FUEL COAL & COGS. HEAT STOVE. LIGHTS. REFR.
 HEAT STOVE IN OFF. FUEL COAL & COGS. NO FIRE APPS.

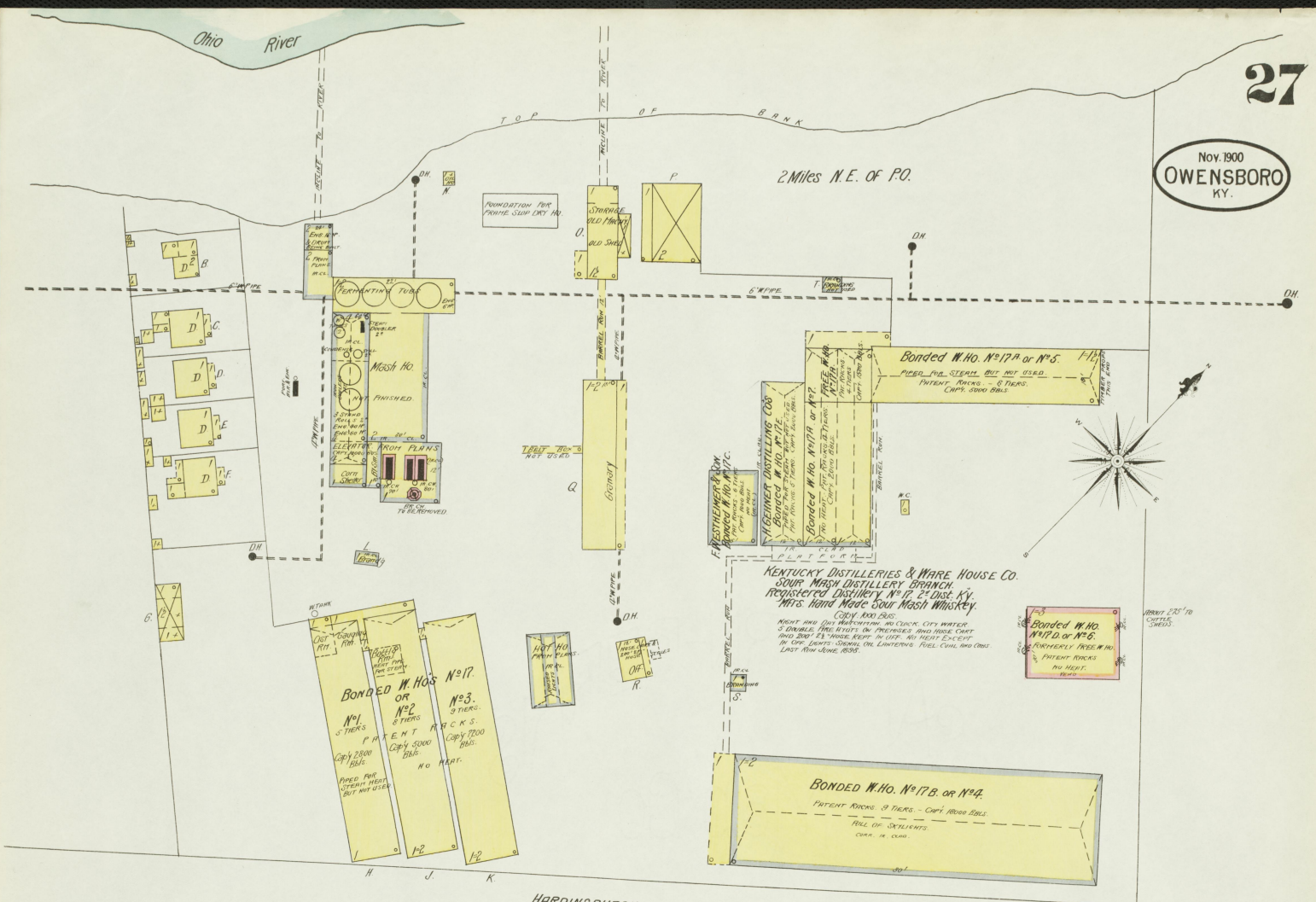
5 Miles N.W. of Owensboro P.O. on Road to
 Grissoms Landing.



N o e x p o s u r e s .



Map drawn
 11/10/00
 1/10/01
 1/10/01



Bonded W. No. 17^A or No. 5
PATENT RACKS - 9 TIERK - CAP'S BRONZ BALLS
TUBS FOR STEAM, BUT NOT USED.PATENT RACKS - 6 TIERK - CAP'S BRONZ BALLS

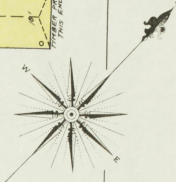
Bonded W. No. 17^B or No. 4
PATENT RACKS - 9 TIERK - CAP'S BRONZ BALLS
TUBS FOR STEAM, BUT NOT USED.PATENT RACKS - 6 TIERK - CAP'S BRONZ BALLS

Bonded W. No. 17^C or No. 3
PATENT RACKS - 9 TIERK - CAP'S BRONZ BALLS
TUBS FOR STEAM, BUT NOT USED.PATENT RACKS - 6 TIERK - CAP'S BRONZ BALLS

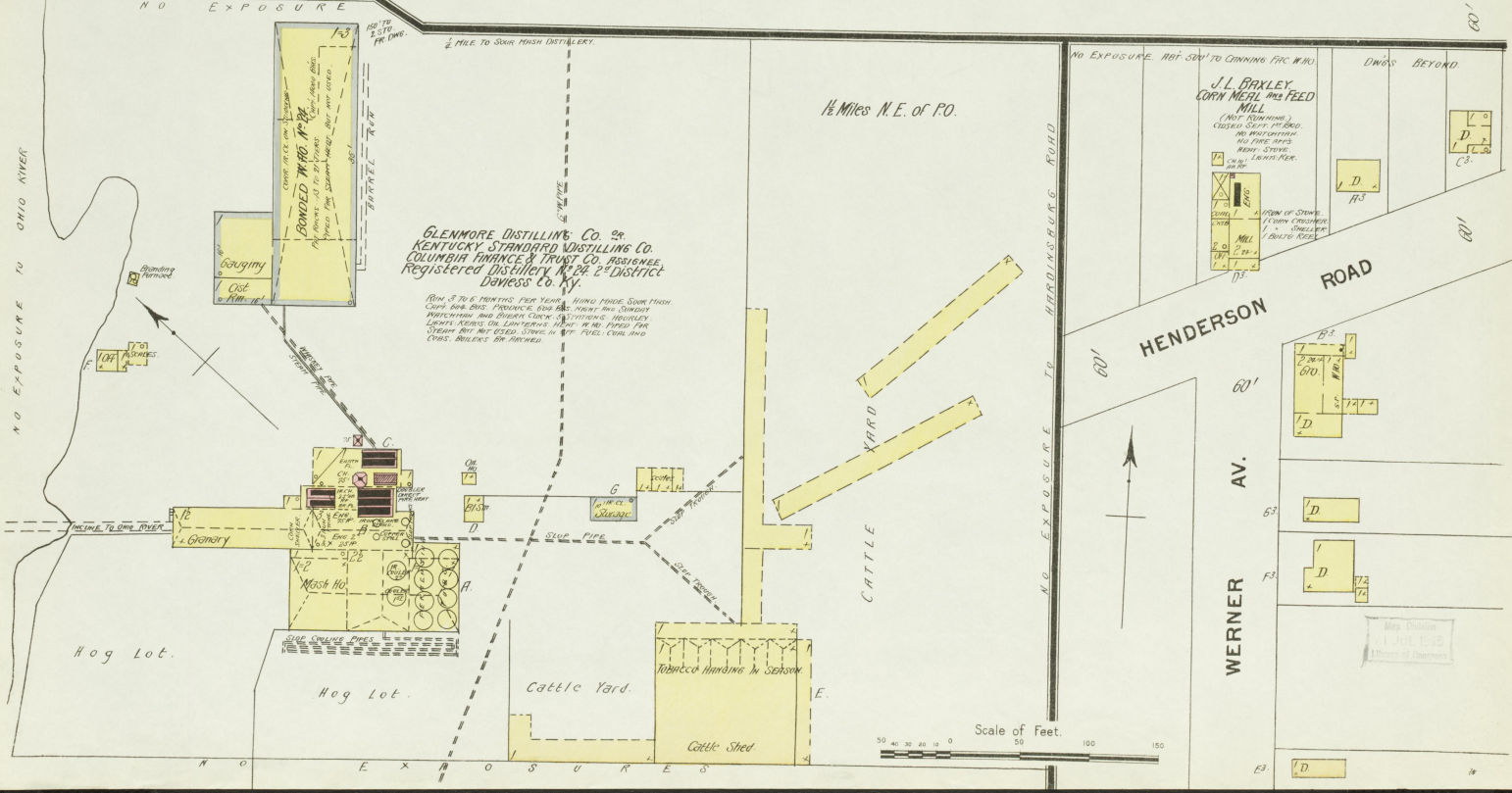
Bonded W. No. 17^D or No. 2
PATENT RACKS - 9 TIERK - CAP'S BRONZ BALLS
TUBS FOR STEAM, BUT NOT USED.PATENT RACKS - 6 TIERK - CAP'S BRONZ BALLS

Bonded W. No. 17^E or No. 1
PATENT RACKS - 9 TIERK - CAP'S BRONZ BALLS
TUBS FOR STEAM, BUT NOT USED.PATENT RACKS - 6 TIERK - CAP'S BRONZ BALLS

KENTUCKY DISTILLERIES & WARE HOUSE CO.
SOUR MASH DISTILLERY BRANCH
Registered Distillery No. 17 2^d Dist. Ky.
Mfrs. Hand Made Sour Mash Whiskey.
COPY AND BUS.
MIGHT HAVE ONLY MASHING AND COOK. CITY WATER.
3 SHAKES PER BATCH ON PREMISES AND FINE CHIT
AND 200 LBS. WASH PER 100 GALS. NO HEAT EXCEPT
IN ONE SHAKE SIGNAL ON LIGHTING. FUEL COAL AND CHIT
LAST YEAR LONG 1898.



HARDINBURGH ROAD

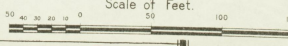


1/2 Miles N.E. of P.O.

HENDERSON ROAD

WERNER AV.

Scale of Feet.



Nov 1900
OWENSBORO
KY.

KENTUCKY DISTILLERIES and W. H. CO.
THE JOHN HANNING DISTILLING CO. BRANCH
REGISTERED DISTILLERY N^o 11. DRAVES CO. 2^d DIST. KENTUCKY
HAND MADE SOUR MASH WHISKEY.
CAPY 1500 BBL. PER DAY

LAST RUN JULY 1898. RUN 8 TO 10 MONTHS PER YEAR WHEN
NECESSARY. ABOUT 1000 BBL. WEEKLY PRODUCTION. NO COOKING
BEFORE. PATED FOR STEAM BUT NOT USED. COOKED. CASKS. 1890. CASK
AND 2000. PRODUCTION. STEAM FROM 8. 10. 12. AND
3 PORTABLE FIRE ENGINES. NO HOPE. TOWNSHIP OF HAZLETON
PRACTICALLY LEVEL.



BONDED W. H. NO. 16 OR N. 6.
CAPY 1500 BBL.
(NO CL.)

BONDED W. H. NO. 11 E OR N. 5.
KNOWN AS BIG HANNING.
PATENT ROCKS.
12 TIERS. PATENT BILLS.
CASKY 1500 BBL.
(PATED FOR STEAM BUT NOT USED.
COOK. IN CL.)

BONDED W. H. NO. 11 D OR N. 4.
KNOWN AS LITTLE HANNING.
CAPY 1500 BBL.
8 TIERS. PAT. ROCKS. NO HEAT.
VENED.

BONDED W. H. NO. 11 E OR N. 3.
CAPY 1500 BBL.
PATENT ROCKS.
PATED FOR STEAM BUT NOT
USED. COOK. IN CL.

FREE W. H. NO. 11 A.
CAPY 1500 BBL.
8 TIERS. PAT. ROCKS.
VENED.

BONDED W. H. NO. 11 A OR
N. 1.
8 TIERS. PAT. ROCKS.
CAPY 1500 BBL.
NO HEAT.

BONDED W. H. NO. 11 B OR N. 2.
CAPY 1500 BBL.
8 TIERS. PAT. ROCKS.
COOK. IN CL.

THE DRAVES COUNTY PUBLIC WARE HOUSE CO.
REGISTERED N^o 182. 2^d DIST. DRAVES CO. KY.
C. L. APPLEGATE PRES.

GENERAL BONDED W. H. NO. 1.
CAPY 1500 BBL.
PATENT ROCKS. 8 TIERS.
IN CL.
PATED FOR STEAM.

FREE W. H. NO. 11 B.
CAPY 1500 BBL.
PAT. ROCKS.
8 TIERS.
SPECIAL BONDED
W. H. NO. 11.
CAPY 1500 BBL.

Scale of Feet.
0 50 100 150

VACANT 400' BEYOND

2 Miles W. of Owensboro P.O.

OHIO RIVER BEYOND