



University Archives
Margaret E. King Library - North
University of Kentucky
Lexington, Kentucky 40506

copy 1

THE AUBURN GAME

STOLL FIELD • OCT. 13, 1956
KENTUCKY OFFICIAL PROGRAM - 25¢

We're Rootin' for you Kentucky Wildcats!

Begley's

**The Begley Drug Company
Three Stores In Lexington:**

- 1198 NORTH LIMESTONE
- 878 EAST HIGH STREET
- 404 SOUTHERN U PASS

**SERVING
THE BEST IN DRUG STORE NEEDS**

**We Also Serve Central and Eastern Kentucky
With Stores In:**

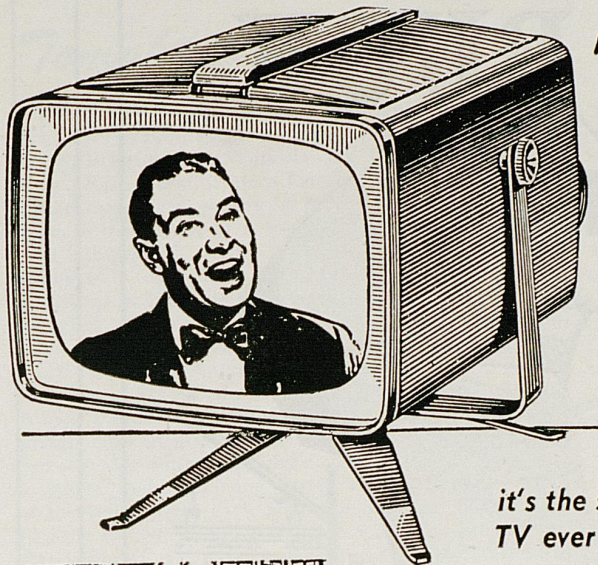
LONDON
RICHMOND
SOMERSET
MT. STERLING
DANVILLE
SHELBYVILLE

CORBIN
STANFORD
IRVINE
McKEE
CYNTHIANA
WINCHESTER

**"36 Years of Reliable Drug Service"
"You're Always Welcome At Begley's"**

A new achievement in Television Luxury

new **RCA VICTOR**
"Personal" TV



YOU'VE GOT TO SEE IT, lift it, try it . . . to believe it! You get famous RCA Victor performance in a set only 9½" wide, 8⅛" high (without removable stand), 12⅞" long!

Handy telescoping antenna helps bring you a clear, sharp, steady picture. Trim modern cabinet in ebony, red, gray or ivory textured finishes.

it's the smartest, smallest TV ever built!

Only **\$125.00**



Watch TV in your own room!

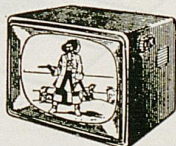


Children "go quietly" with the "Personal."



Take it to the office!

The Dixon. 261 sq. in. viewable "Living Image" picture. Ebony finish; maroon or limed oak grained finishes extra. Model 21T715. **\$229.95**



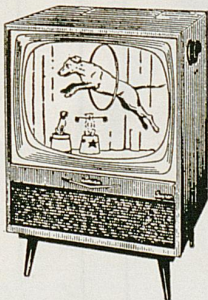
The Allen. Huge 329 sq. in. viewable "Living Image" picture. Ebony finish; mahogany grained or limed oak grained finishes extra. Model 24T727. **\$279.95**



The Ranstead Deluxe. It swivels! 261 sq. in. viewable area. 3 speakers! 3 finishes: mahogany; birch; blond tropical hardwood with walnut trim. Model 21D748.



\$379.50

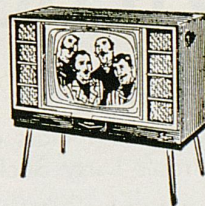


The Eaton. 261 sq. in. viewable "Living Image" picture. Ebony, mahogany grained or limed oak grained finishes. Model 21T735. **\$279.95**

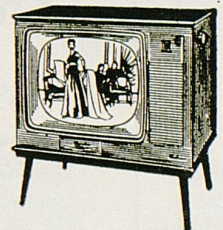


The Enfield. It swivels! 261 sq. in. viewable area. Mahogany grained finish. Model 21T738.

\$309.95



The Raeburn. 261 sq. in. viewable area. Mahogany grained, walnut grained with blond tropical hardwood or limed oak grained finishes. Model 21T741. **\$359.95**



The Endcott Deluxe. 329 sq. in. viewable area. Finished in blond tropical hardwood with natural walnut. Model 24D758.

\$419.50

669 SOUTH BROADWAY
LEXINGTON, KY.
PHONE 2-6886

Sterling
INC.
FAMOUS FOR FAMOUS BRANDS

TELEVISION—RADIOS
HIFI RECORDS
HIFI PHONOGRAPHS
APPLIANCES

DIRTY BUCK

BY

WINTHROP



"the WILDCAT" by **WINTHROP** SHOES

It's the shoe "most likely to succeed"

Year after year . . . class after class . . . freshmen and grads agree Winthrop's Dirty Buck is a must in well-balanced campus wardrobes . . . it's truly a part of campus life. 'The Wildcat' is carefully styled in glove soft creamy buck with sturdy long-wearing red rubber soles and heels.

10.95

Be a Wildcat Booster First, Last and Always

PURCELL'S

MEN'S SHOES MAIN FLOOR

Tonight's Game . . .

When the Auburn Plainsmen (or Tigers, if you prefer) trot onto the Stoll Field turf tonight for their fifth meeting with Kentucky's Wildcats, it'll be a strange match of two former Southeastern Conference "doormats," now turned major grid powers on the national scene, battling to erase the stigma of a frustrating tie that occurred in their last meeting.

The two teams first got together on the gridiron at Lexington in 1934. Both were then a far cry from being the class of their own league, let alone championship and bowl contenders as they have ranked in the past few years. Kentucky emerged from that first meeting with the first blood of the series, a 9-0 success. Auburn evened the count by triumphing the next year at Montgomery and then the rivalry was interrupted for almost two decades while both clubs virtually went "from bad to worse" before starting climbs up the football ladder to the prominence each now enjoys. New U.K. Coach Blanton Collier guided a Wildcat victory in a 1954 test that resumed the series and last season engineered his club to an upsetting, 14-14 tie in the face of two-touch-down underdog odds.

Neither coach or ball club was entirely satisfied with this outcome, which was marred by frustrations of unsuccessful gambles, key penalties and incomplete field goals. Coach Ralph (Shug) Jordan can be counted on to have his boys full of revenge and bent on putting Auburn back on the track of terrific success enjoyed over the past three years.

The Plainsmen are supposed to be beset by almost as many problems as Kentucky, but scouting reports defy any tendency to type them as a "weak sister." The ex-

KENTUCKY

"WILDCATS"

VERSUS

AUBURN

"TIGERS" OR "PLAINSMEN"

October 13, 1956

STOLL FIELD

perts in pre-season estimates picked them to finish fourth in the power-laden SEC and they should be ready to demonstrate their claim to this right. Although soundly trounced at the hands of ambitious Tennessee by almost the identical score that Kentucky absorbed in its licking by Ole Miss two weeks ago, indications are that, like the Wildcats, they are nowhere near as bad a team as the score might indicate.



OFFICIAL KENTUCKY FOOTBALL PROGRAM

Edited by Ken Kuhn, Sports Publicity Editor
Published by University of Kentucky Athletics Association
Represented for National Advertising by
Don Spencer Co., New York



As coach with Centre's Southern Champions, 1924

THE HONORABLE
Albert B. Chandler
 GOVERNOR OF KENTUCKY



As Kentucky's Chief Executive, 1956

The nation's most sports-minded governor.

That is probably one of the most appropriate descriptions ever tagged on A. B. (Happy) Chandler, twice chief executive of the Commonwealth of Kentucky and holder of two degrees from the state university (LL.B. '24, LL.D. '37).

Governor Chandler is familiarly known throughout the world as the former commissioner of organized baseball in the United States, but comparatively few people know that his sports background goes back even further.

He played baseball for the Grafton (N. D.) team of the Red River Valley League, between terms at Transylvania College. Following graduation, Happy entered Harvard Law School and, even in these busy days, found time to tutor football and basketball teams at Wellsley Hills (Mass.) High School.

Later he enrolled at UK and, in between law classes, coached basketball at Versailles High. He was also coach of the 1922 UK girls' basketball team.

The energetic young man somehow found time to be a scout and assistant football coach at Centre

College, for 11 years. One of his unforgettable experiences of these days came when Centre upset then-mighty Harvard, 6-0, at Cambridge, Mass., back in 1921.

Many years later, after becoming Governor (1935) and U. S. Senator (1939), he served as Baseball Commissioner for six years and was extremely popular with the ballplayers.

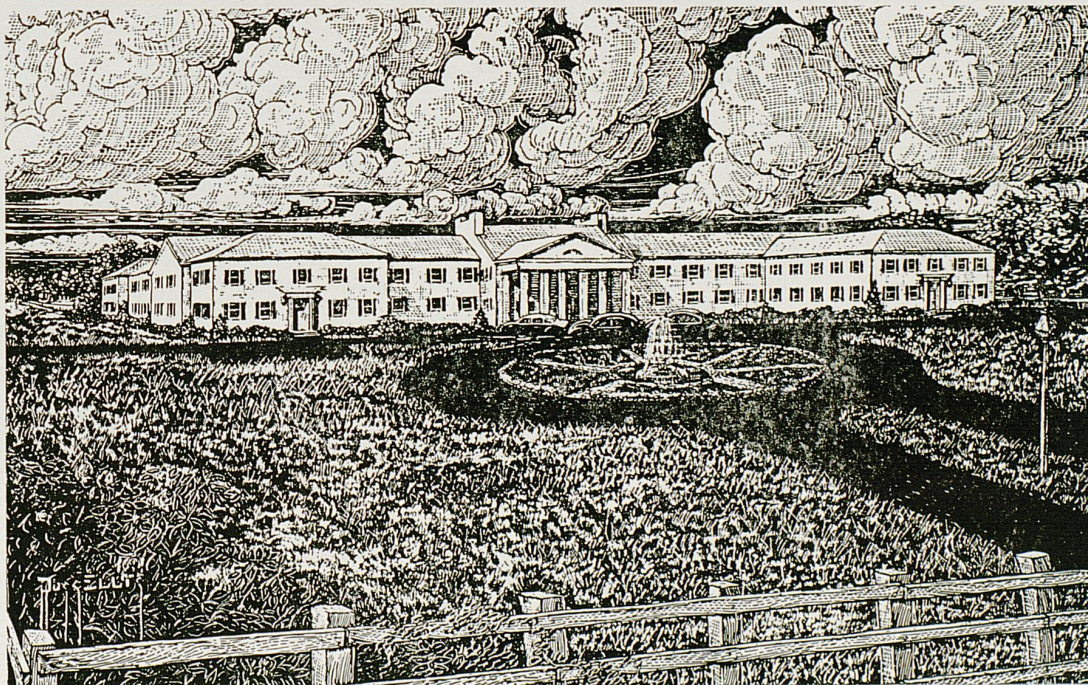
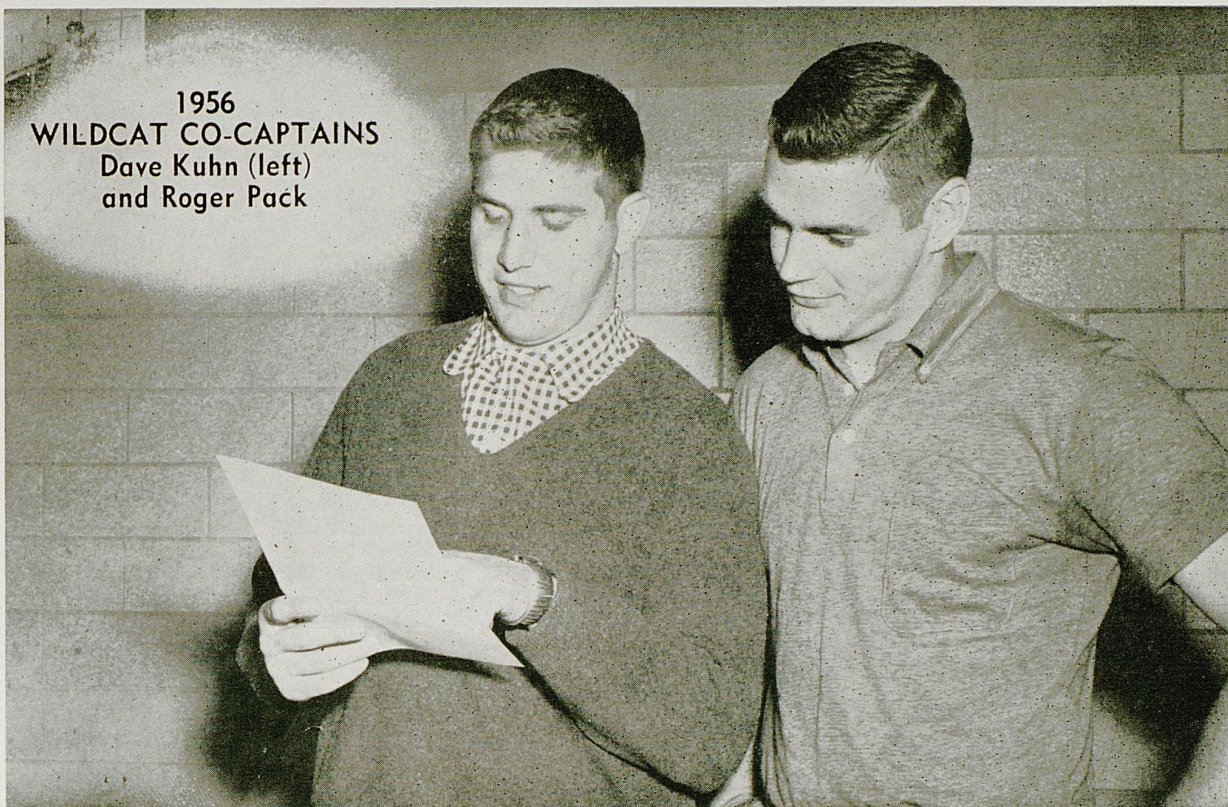
Governor Chandler has been attending UK athletic events for nearly 40 years. His youngest son, Dan, now in the U. S. Army, was a recent member of the Kentucky basketball squad. Ben, his other son, is also an alumnus of UK.

In addition, he has backed the University in other ways. Spearheaded by Governor Chandler, the 1956 Assembly appropriated \$5,000,000 to start construction of the new UK Medical Center. Another \$6,000,000 is pledged.

Educational allotments throughout the Commonwealth are at an all-time high, largely through the efforts of the Governor, and the recent Legislative appropriations to schools.

—TOM DISKIN

1956
WILDCAT CO-CAPTAINS
Dave Kuhn (left)
and Roger Pack



Campbell House Hotel

Free Parking
Air Conditioned

U. S. 68
Swimming Pool

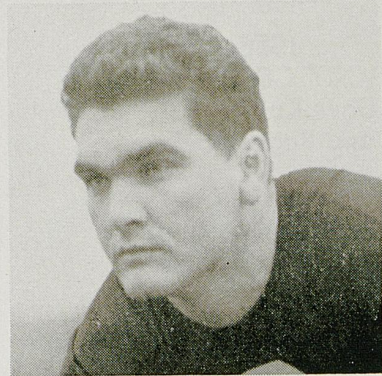
Golf

FOR COMPLETE REPORTS ON THIS GAME AND OTHERS BEING PLAYED
TODAY, READ THE SPORTS SECTION OF SUNDAY HERALD-LEADER

"MYSTERY WILDCATS"



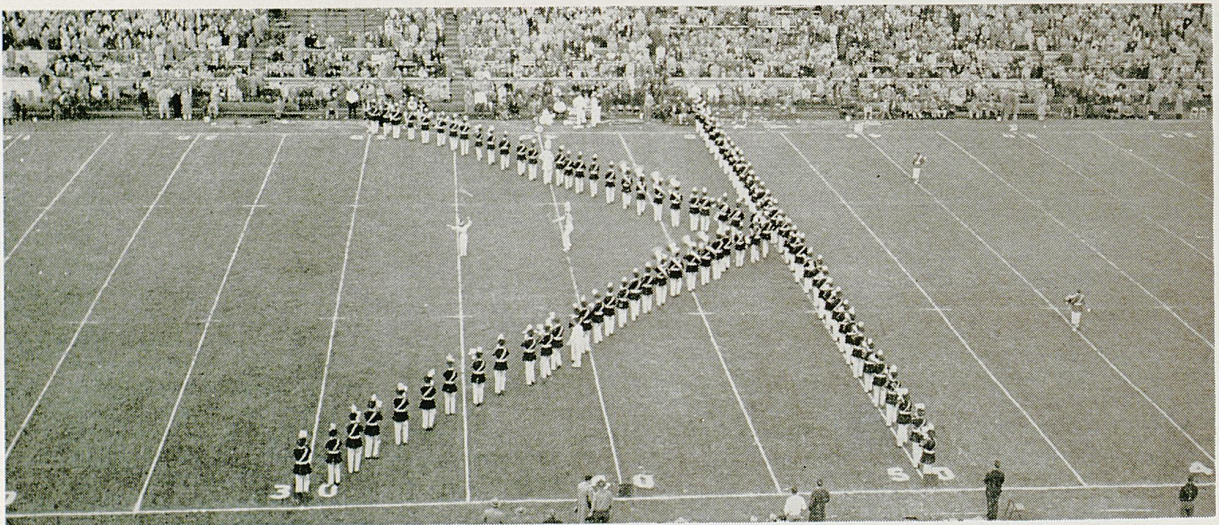
Former University of Kentucky backfield ace and star of the old Brooklyn professional football club . . . He was the first Wildcat to pick up All-Southeastern Conference honors (1933) and maintains an honor spot at fullback on the All-Time Kentucky Football Team . . . Garnered his chief fame as a tremendous punter and all of his important marks in this department of play still stand as conference records . . . Posted a phenomenal 43.5 average yardage on 101 punts in the 1933 season . . . Now a successful thoroughbred trainer for the Vanderbilt stable.



A native Kentuckian hailing from Ashland who ranks with the all-time gridiron greats produced at the University of Kentucky . . . He became the first Wildcat football player to win first team All-America mention when the Associated Press named him at a tackle position in 1942 . . . Teammates referred to him by the nickname, "Stoop" . . . Learned his college football under Head Coach "Ab" Kirwan and Line Coach Bernie Shively from 1940-42.

For identification of Today's "Mystery Wildcats," see footnote on page 48.

"MARCHING 100"



Back in 1936, an Atlanta sports scribe, subtly criticizing the poor showing of a visiting Wildcat football team, tagged the accompanying Kentucky marching band as the "Best Band In Dixie." That title became traditional in describing the UK musical aggregation as each year's band fulfilled its mission of providing appropriate music in support of the teams at all home football and basketball games, as well as many road appearances. Although the title has since been changed to "Marching 100," the band members still take their original appellation seriously and clearly demonstrate with each new appear-

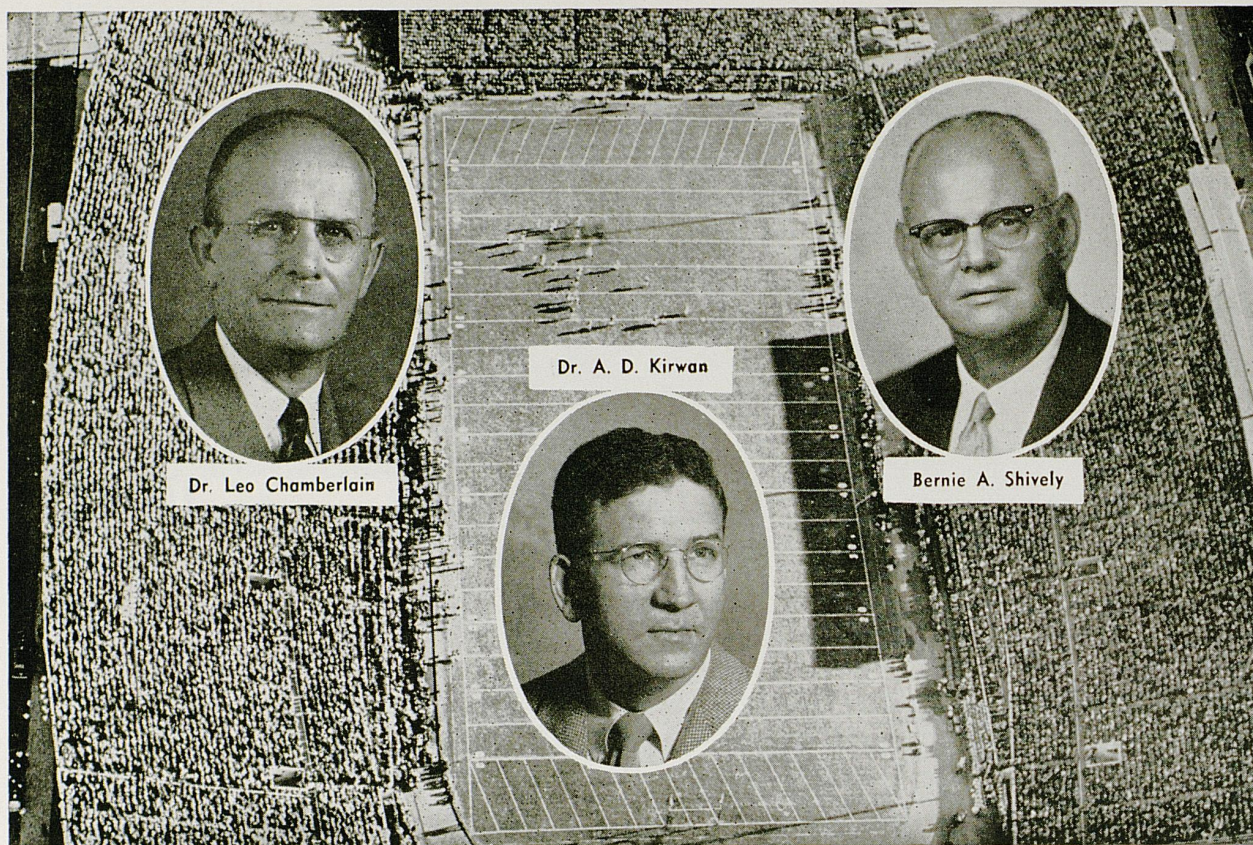
ance their literal rights to it. Since 1950, the Kentucky band has been under the able direction of Mr. Warren Lutz who has won the hearts and plaudits of Wildcat fans and band authorities, alike, with his commendable arrangements and terrific half-time shows for the band. The "Marching 100" and Director Lutz have become nationally famous representatives of the University and the Blue Grass State through their appearances on national television and all the major radio networks during the past few grid campaigns.



"The Kentucky Story"

JUST A SHORT 17 years ago, Frank Graves Dickey was a comparatively "obscure" teacher in the Lexington city school system who had little if any vision of attaining the enviable position he acceded to on September 1 of this year—fifth president of the State of Kentucky's largest institution of higher learning. Today, as the youngest chief executive in University of Kentucky's 91-year history, Dr. Dickey brings an outstanding and refreshing approach to the many challenging problems of one of the nation's fastest growing educational institutions. Born in Wagoner, Oklahoma, he received almost all of his education in Lexington and graduated from Henry Clay High School. His A.B. degree with highest honors came

from Transylvania College while both the Master of Arts and Doctor of Education degrees were awarded by U. of K. in 1942 and 1947, respectively. He also has taken post-doctoral work at Harvard and served in the Army. In 1949, he was chosen to head U.K.'s Bureau of School Service and six months later was appointed as Dean of the College of Education, the post he held until his election to the presidency. Dr. Dickey claims little connection with athletics as a participant since junior high days, but classes himself as an avid sports enthusiast. He is on record as strongly favoring the continuance of University athletics on their current high plane and in balance with the academic program.



Athletics at Kentucky

Kentucky's athletics program is organized under the Department of Athletics and a corporation known as the University of Kentucky Athletics Association.

A firm believer in sports and sportsmanship, Dr. Leo M. Chamberlain, Vice-President of the University, has general supervision over the Department and also serves as vice chairman of the Board of Directors of the Association.

Former UK football player and one-time Wildcat coach, Dr. A. D. Kirwan, acts as secretary to the Association. He also is the school's faculty representative to the Southeastern Conference.

Supervising the steady growth and balanced development of one of the nation's top athletic programs as Director of Athletics is Bernie A. Shively. The former Illinois All-America footballer has guided the development of Kentucky as a nationally-respected power in major sports since 1938 and gained wide prestige through a fair-minded approach to many problems. Under his direction, the seating capacity of McLean Stadium has been doubled, powerful lighting equipment installed to

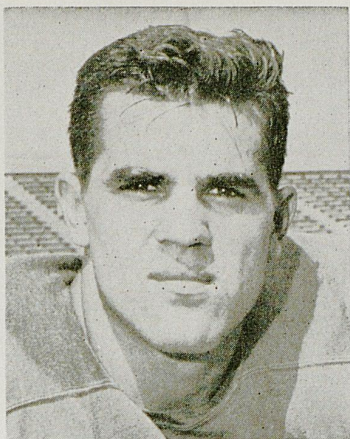
bring night football into new popularity, mammoth Memorial Coliseum constructed, new practice facilities and two modern living units (Wildcat Manor and Kitten Lodge) provided for the grid-iron teams.

Maintaining over-all control of U.K. athletics affairs is the Board of Directors of the Athletics Association, composed of the President of the University and 10 other directors appointed by him, including five members of the faculty of the University, the president of the Student Government Association, an alumnus of the school, a member of the U.K. Board of Trustees, and two others. Frank D. Peterson, University Vice President of Business Administration, serves the board as treasurer.

The current Board of Directors consists of:

Dr. Frank G. Dickey,
Chairman
Dr. A. D. Kirwan,
Secretary
Dr. Ralph Angelucci
Thomas H. Ballantine
George K. Brady
Aubrey J. Brown
Thomas Clark
Lyman Ginger

Dr. Leo M. Chamberlain,
Vice Chairman
Richard K. Lehman
(Student)
Robert Hobson
Alfred L. Crabb
Paul Oberst
H. D. Palmore
D. V. Terrell
William A. Tolman

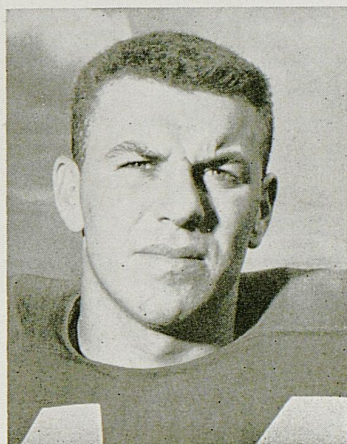


LOU MICHAELS
Junior — Tackle
Swoyerville, Pa.

When usually-placid professional scouts abandon their reserved composure to drool over an "interior" lineman—and a sophomore to boot—it's a pretty good tipoff that they have spotted a potentially great prospect. Such is the case of UK's great tackle Lou Michaels. With only one season of varsity play under his belt, the mature young giant from Swoyerville, Pa., is already being tabbed by the experts as a potential All-American. At 6-2 and 230 pounds, Michaels has the physical equipment to go along with great ability, strength, speed, agility and a keen mind—attributes of a great football player—and Coach Collier classes Lou as "one of the best I have seen in collegiate ranks."

Before the 1955 season opened, Coach Collier had grave doubts that his fullback situation was as sound as it should be and wondered if big Bob Dougherty, after a three-year absence from collegiate competition, could get the job done. The smiling Irishman from Bellevue, Ky., every inch the battering-ram type of fullback that is a coach's dream, had already been picked by the Los Angeles Rams for a future in pro ball. But he remained the big question mark nevertheless. Subsequent action by Mr. Dougherty, as one of the leading ground gainers in the conference and outstanding defense man, proved all worries needless, and served notice that the 212-pound lad will be a serious force to be reckoned with in '56 as he goes after All-Conference honors.

BOB DOUGHERTY
Senior — Fullback
Bellevue, Ky.



OFFICIAL WATCH FOR



U. S. OLYMPIC
COMMITTEE
1948-1952-1956



NAT'L AERONAUTIC
ASSN.



NAT'L COLLEGIATE
ATHLETIC ASSN.
CHAMPIONSHIPS



AMERICAN AUTO-
MOBILE ASSN.



NATIONAL SKI
ASSN.



AMERICAN
POWERBOAT
ASSN.



AAU
CHAMPIONSHIPS



NATIONAL HORSE
SHOW ASSN.

and many others

Longines

THE WORLD'S MOST HONORED WATCH

Official Watch for the

KENTUCKY GAMES

Longines, first watch of sport, is recognized as official for timing world records and international events by all international sports and contest associations. Every Longines watch, for whatever its use, is made to be the best of its kind. For yourself, as a gift, no other name on a watch means so much as Longines, the world's most honored watch.



10 WORLD'S FAIR
GRAND PRIZES
28 GOLD MEDALS



Longines watches to cope with outdoor life—fully protected against all common watch hazards. For her—Longines Skylark "A.P." For him—Longines Sportsman "D", each \$89.50. Other Longines watches from \$71.50.

Longines-Wittnauer Watch Company



KENTUCKY'S COACHING STAFF. Head Coach Blanton Collier (center, seated) goes over the rugged 1956 schedule of the Wildcats with aides. In back, from the left are Freshman Coach John North; Bill Arnsparger, offensive line coach; Ed Rutledge, freshman backfield coach; and Dominic Fucci, defensive backfield coach. Seated are Charles Bradshaw, end coach; Matt Lair, defensive line coach; and Ermal Allen, backfield coach.

THE WILDCATS' 1956 SCHEDULE

Date	Opponent	UK	Opp.	Date	Opponent	Place
Sept. 22	*Georgia Tech, Lexington	6	14	Oct. 27	*Georgia	Athens
Sept. 29	*Ole Miss, Memphis	7	37	Nov. 3	Maryland	College Park
Oct. 6	*Florida, Gainesville	17	8	Nov. 10	*Vanderbilt	Lexington (H)
Oct. 13	*Auburn		Lexington (N)	Nov. 17	Xavier	Lexington
Oct. 20	*L. S. U.		Lexington (N)	Nov. 24	*Tennessee	Knoxville

* SEC GAME. (N) Night Game. (H) Homecoming. Home games start at 2 p.m. and 8 p.m.

Recommended by

Duncan Hines

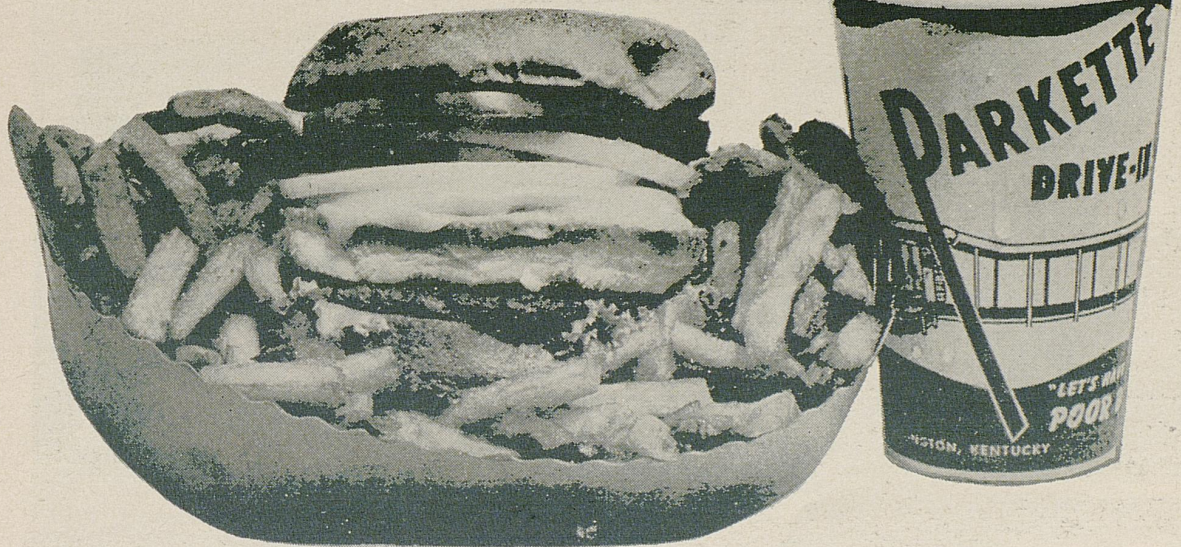
The Golden Horseshoe

Nationally Famous . . .
Lexington's Finest
Colonel Harry Ware
at the Organ and Piano

SCORES OVER STOLL FIELD PUBLIC-ADDRESS SYSTEM COME TO YOU THROUGH THE COURTESY OF THE LEXINGTON NEWSPAPERS

Try
Parkette's
Famous
"Poor Boy"

"Before
And After
The Game
Or Show,
The Parkette's
The Place
To Go"



19 OTHER
DELICIOUS
SANDWICHES !

CHICKEN OR
JUMBO SHRIMP
IN THE BOX !

GIANT
MILK
SHAKES !

NOW THERE ARE "2"
Parkette Drive Inns

No. 1—Northeast Beltline . . . On Bypass 25—Phone 4-8723

No. 2—Off Beltline Georgetown Rd. U.S. 25—Phone 2-8617



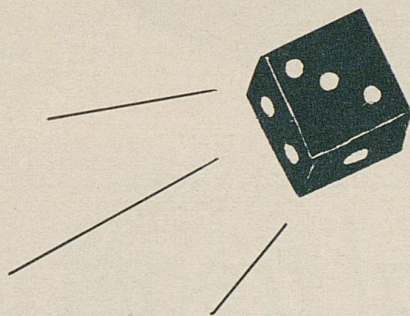
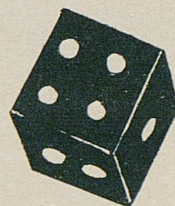
PART OF THE ENGINEERING QUADRANGLE

COLLEGE OF **Engineering**

Engineers of the future will find the University of Kentucky an ideal place at which to receive training in the fundamental sciences and to prepare for professional careers. The College of Engineering endeavors to keep before its students the latest developments in the fields of engineering. Modern laboratories and equipment make intensive research work possible. Instruction is offered leading to degrees in civil, electrical, mechanical, metallurgical, and mining engineering. Special options may be taken in architectural, sanitary, communications, and aeronautical engineering.

You May Be a Sports Fan...

**BUT DON'T BE
A GAMBLER**



**When
Servicing
Your Car!**

**LET ONLY CHEVROLET TRAINED MECHANICS
DO THE WORK ON YOUR CAR.**

The L. R. Cooke Chevrolet Co.

Phone: 5-2110

180 E. High St.

Closed Sundays

SERVING LEXINGTON OVER 37 YEARS

Bayham's
shoes of distinction

FRENCH SHRINER

MEN'S *Extra Quality* SHOES

KEYED TO COMFORT

Most Styles **\$19.95 to \$24.95**

Other Stores in

Louisville—Paducah—Nashville
Cincinnati—Orlando, Fla.



Quality Shoes
for
MEN—WOMEN
CHILDREN

have a real treat . . .

ARMOUR ★

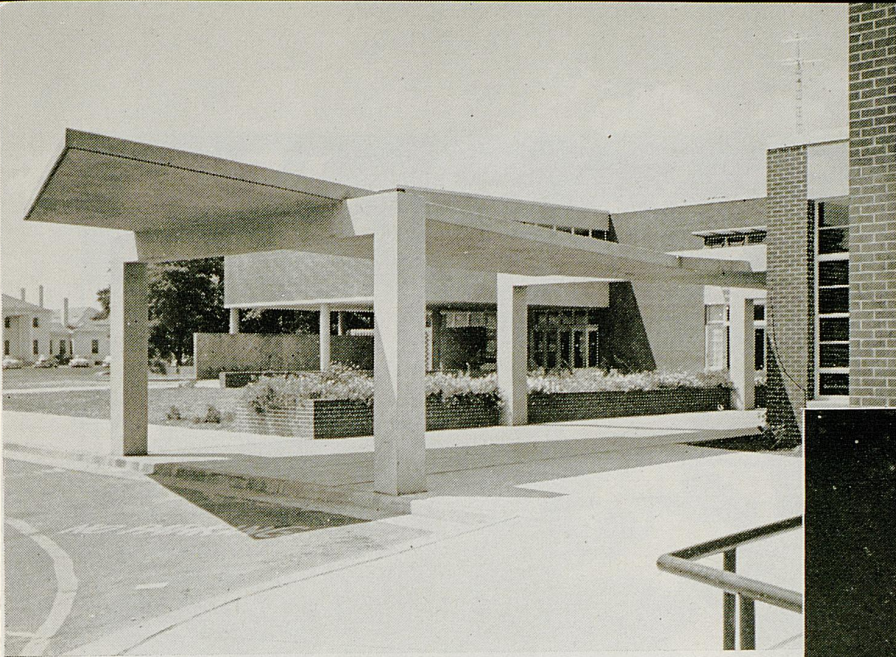
FRANKS

with the
"OPEN-FIRE"
FLAVOR



SCORES OVER STOLL FIELD PUBLIC-ADDRESS SYSTEM COME TO
YOU THROUGH THE COURTESY OF THE LEXINGTON NEWSPAPERS

Auburn



AUBURN UNION BUILDING



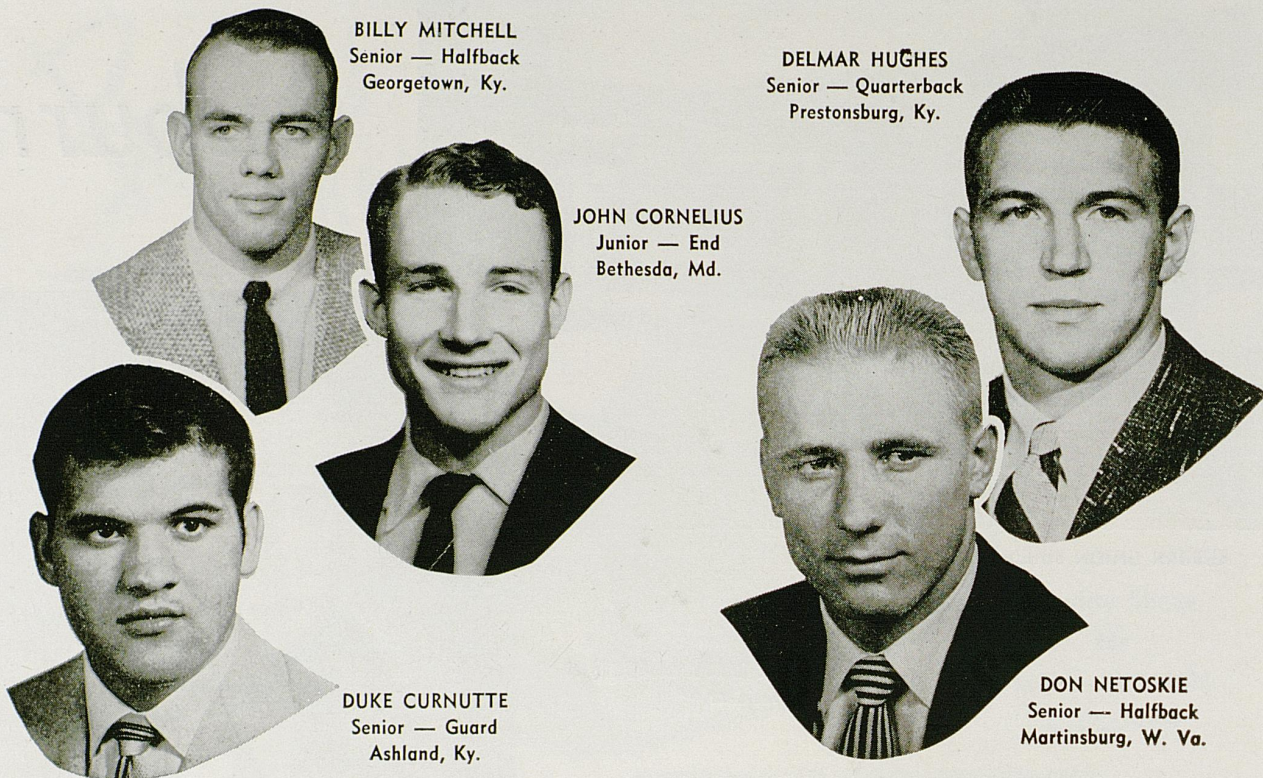
DR. RALPH DRAUGHON
President



RALPH JORDAN
Head Coach



JEFF BEARD
Athletic Director



BILLY MITCHELL
Senior — Halfback
Georgetown, Ky.

DELMAR HUGHES
Senior — Quarterback
Prestonsburg, Ky.

JOHN CORNELIUS
Junior — End
Bethesda, Md.

DUKE CURNUTTE
Senior — Guard
Ashland, Ky.

DON NETOSKIE
Senior — Halfback
Martinsburg, W. Va.

LEXINGTON'S NO. 1 SPORTS STATIONS

See Coach Collier...

**EACH SUNDAY, 9.00 P. M., WITH FILM
AND COMMENTS ON ALL UK GAMES**

FOOTBALL GAMES! See the top games of the season on WLEX-TV! Tune to Channel 18 for the clearest, sharpest picture in central Kentucky!



Lexington's Pioneer TV Station

Channel 18 • Lexington

NBC ABC CBS

*Hear
Coach Collier*

TUESDAYS AND
FRIDAYS, 6:30 P. M.

WLEX
1300 ON DIAL

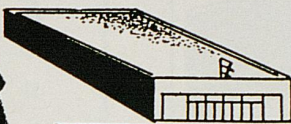


For an accurate, colorful description of

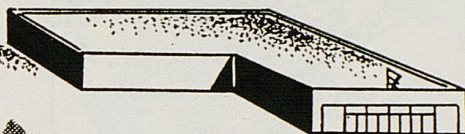
ALL UK GAMES

tune to WLEX radio, Lexington's only independent, non-directional radio station!

5 Years of Progress



1951



1954

and now - **1956**
BIGGER and BETTER
WELGO TRADERS,
at your service!

WELGO TRADERS
← FREE PARKING →

★
SHOPPING CENTER
for the entire
FAMILY!
★

WELGO is on
the march.... watch us
GROW! GROW! GROW!

**KENTUCKY'S LARGEST SELF-SERVICE
DEPARTMENT STORE!**

Shop
WELGO
for
**COLLEGE
QUALITY**
at
Kindergarten
PRICES!

FREE PARKING

OPEN 9 TO 9

WELGO TRADERS
WINCHESTER ROAD

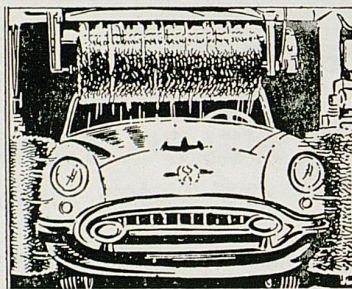
SATISFACTION GUARANTEED WITH EVERY PURCHASE



JIMMY BUTTS
Minit Auto Wash
 Middle of Midland



Tires are cleaned snow white or blacked.



Tops and sides are washed automatically.

**Slickest,
 Quickest
 C A R
 W A S H
 In Town—**

*Where Our
 Customers
 Send Their
 Friends!*

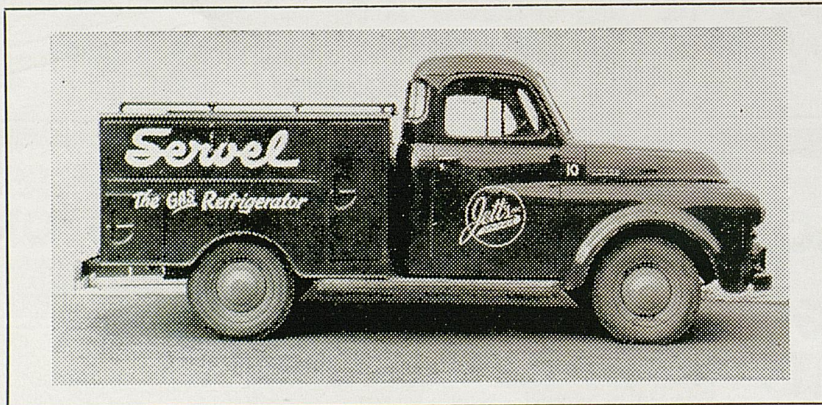
*Enjoy the Game...
 Enjoy the Finest...*



There's A Dixie
 Dealer Near
 You.

**IT'S JETCO APPLIANCE SERVICE
 THAT COUNTS**

Call
 5-0330
 For
 Appliance
 Service



Call
 5-0330
 For
 Appliance
 Service

Jetco Distributors

327 E. VINE ST.

DIAL 5-0330



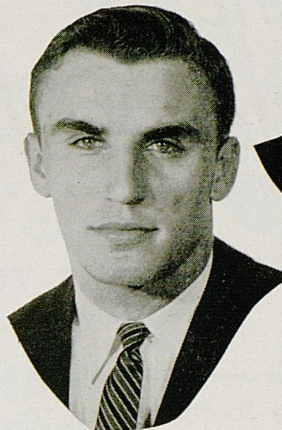
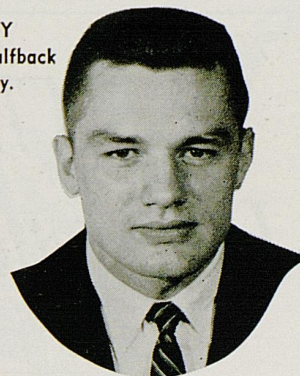
The Phoenix Hotel

"Lexington's Largest and Finest"

2 RESTAURANTS
COCKTAIL LOUNGES

Where Friends Delight To Meet

DICK MABRY
Sophomore — Halfback
Lexington, Ky.

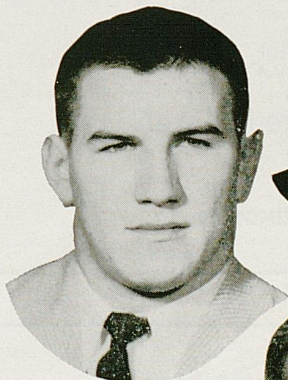
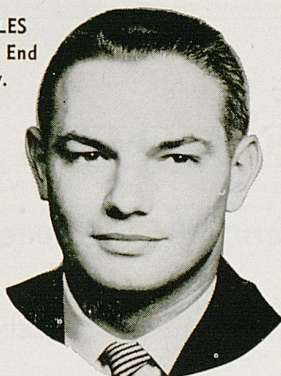


JACK GALLAGHER
Sophomore — Halfback
Cumberland, Ky.

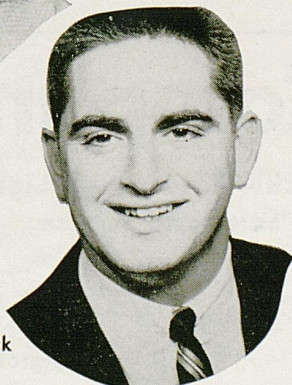


DAVE ALLEN
Sophomore — Halfback
Hamilton, Ohio

DICK CHARLES
Sophomore — End
Murray, Ky.



BOB BENNETT
Senior — Guard
Russell, Ky.



BOB BONICH
Sophomore — Fullback
Lynch, Ky.

Riddell

ATHLETIC EQUIPMENT

SAFE and SURE

BOTH HEAD and FOOT

- Safety Suspension Helmets
- Tubular Face Guards
- Football Shoes

Hunt's Athletic Goods Co., Inc.

Phone No. 104
MAYFIELD, KENTUCKY

"WE SHIP THE DAY YOU BUY"

FOR COMPLETE REPORTS ON THIS GAME AND OTHERS BEING PLAYED TODAY, READ THE SPORTS SECTION OF SUNDAY HERALD-LEADER

The Lafayette Hotel

Extends a cordial welcome and an invitation to the football fans to meet with us after the games. Renew old friendships, greet new friends, and enjoy the spirit of good fellowship that abounds.



MacGregor[®]
**Sports
Equipment**

HUNT'S ATHLETIC GOODS CO.
Phone No. 104
MAYFIELD, KENTUCKY
A MACGREGOR DISTRIBUTOR FOR THIRTY-FIVE YEARS

We Invite You To Stay at
TOWN HOUSE MOTEL

Lexington's Newest and Most Modern Air-Conditioned Motel

S. LIME AT ROSE

PHONE 3-5274

LEXINGTON, KY.

Taylor Tire Company

Incorporated

**Tires — Batteries — Brakes — Clutch — Starter — Lights
Ignition — Wheel Alignment — Sales and Service**

24 Hour



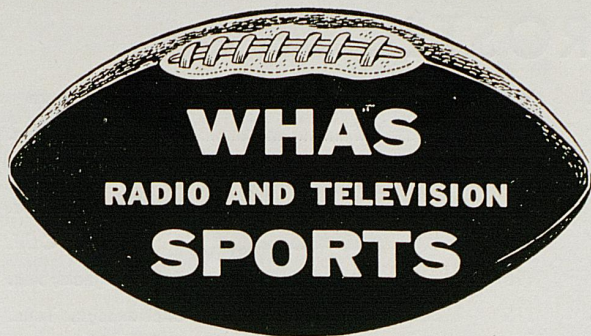
Service

"BUDGET TERMS"

Vine at Southeastern

Phone 2-7127

Lexington, Ky.



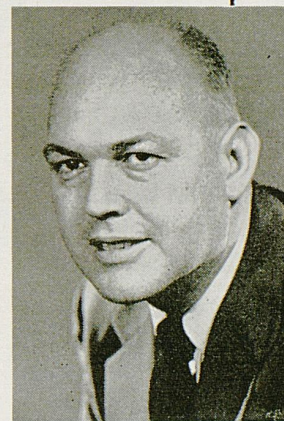
U. of K.
FOOTBALL
•
EVERY GAME
PLAY BY PLAY
ON

WHAS
RADIO
840



WHAS Sports Director Jimmy Finegan

Long-time Kentuckiana sports authority Jimmy Finegan began his career with the *Louisville Herald-Post* and *Louisville Times*. He joined the WHAS Sports Department in 1947, and just a year later became Sports Director. Jimmy's voice is familiar to radio listeners for his popular "Report on Sports" and "Kentuckiana Sports" on WHAS.



WHAS Sportscaster George Walsh

Sportscaster George Walsh is the area's leading play-by-play announcer, famous for his descriptions of outstanding local baseball, basketball and football games. Widely known as the originator of the National Football League's "Game of the Week" on TV, George is seen nightly on WHAS-TV's "Sportraits."

Other Sports Features on WHAS-Radio and TV

RADIO

REPORT ON SPORTS

5:15 p.m. daily

KENTUCKIANA SPORTS

10:15 p.m. daily

FOOTBALL SCOREBOARD

5:45 p.m. Saturday

TV - Channel 11

SPORTRAITS

10:45 p.m. daily

PRO FOOTBALL

Sunday afternoon

WRESTLING

10:55 p.m. Tuesday

FILM BOXING

11:00 p.m. Monday

BOWLING

11:00 p.m. Wednesday

Kentucky Basketball
This winter, George Walsh will broadcast forty-six outstanding basketball games by leading Kentucky teams - on WHAS-Radio!

AUBURN ROSTER

No.	Name	Class	Pos.	Age	Ht.	Wt.	Ltrs.	Hometown
10	Richard Wood, Soph., QB			19	6'5"	200	0	Lanett, Ala.
11	Jimmy Cook, Jr., QB			20	6'	190	1	College Park, Ga.
12	Frank Riley, Soph., QB			20	6'1"	190	0	Greenville, Ala.
15	George Egge, Soph., QB			19	6'1"	183	0	Hayward, Calif.
18	Howell Tubbs, Sr., QB			22	6'	190	2	Birmingham, Ala.
20	Bobby Hoppe, Jr., HB			21	5'11"	175	1	Chattanooga, Tenn.
25	Tommy Lorino, Soph., HB			19	5'8"	165	0	Bessemer, Ala.
29	Jimmy Laster, Soph., HB			20	5'10"	175	0	Covington, Ga.
31	Jim Walsh, Sr., FB			22	5'10"	185	2	Philadelphia, Pa.
32	Eddy Jackson, Soph., FB			21	6'1"	195	0	Demopolis, Ala.
34	Donnie May, Soph., FB			20	6'	195	0	Fairfax, Ala.
39	Billy Atkins, Jr., FB			21	6'	190	0	Millport, Ala.
40	Billy Kitchens, Soph., HB			20	5'9"	175	0	Macon, Ga.
44	Lloyd Nix, Soph., HB			19	5'11"	175	0	Kansas, Ala.
45	Pat Meagher, Jr., HB			21	5'11"	175	0	Auburn, Ala.
46	Louis Preis, Soph., HB			20	6'1"	180	0	Waterproof, La.
52	Jimmie Ricketts, Soph., C			20	6'1"	210	0	Grove Hill, Ala.
55	Frank Reeves, Sr., C			22	6'3"	214	2	Hogansville, Ga.
57	Jimmy Strain, Sr., C			22	5'11"	190	1	Fairfield, Ala.
58	Zeke Smith, Soph., C			20	6'1"	205	0	Uniontown, Ala.
59	Jackie Burkett, Soph., C			19	6'4"	215	0	Ft. Walton, Fla.
60	Don Braswell, Soph., G			21	5'9"	195	0	Albany, Ga.
61	Ken Johns, Jr., G			20	6'1"	200	0	Mobile, Ala.
65	Frank LaRussa, Soph., G			19	5'11"	195	0	Birmingham, Ala.
66	Chuck Maxime, Sr., G			24	5'10"	225	2	Jamestown, N. D.
67	Ernest Danjean, Sr., G			22	5'10"	225	2	New Orleans, La.
68	Tim Baker, Jr., G			21	5'11"	195	1	Decatur, Ala.
69	Jeff Weekley, Jr., G			20	5'10"	195	1	Columbus, Ga.
70	Billy Austin, Soph., T			20	6'4"	220	0	Columbus, Ga.
72	Dan Presley, Soph., T			20	6'	210	0	Opp, Ala.
74	Paul Terry, Sr., RT			21	6'	215	2	Decatur, Ala.
75	Ben Preston, Jr., T			22	6'3"	215	1	Eufaula, Ala.
76	Ted Foret, Soph., T			20	6'	230	0	New Orleans, La.
77	Cleve Wester, Soph., T			21	6'1"	210	0	Albany, Ga.
78	James Warren, Jr., T			20	6'1"	220	1	Valdosta, Ga.
80	Mike Simmons, Soph., E			19	6'3"	210	0	New Brunswick, N. J.
81	Jimmy Reece, Jr., E			22	6'3"	190	0	Birmingham, Ala.
83	Jerry Sansom, Sr., E			22	6'2"	195	2	Fairfield, Ala.
84	John Whatley, Sr., E			22	6'4"	195	0	Eufaula, Ala.
85	Jerry Wilson, Soph., E			19	6'2"	210	0	Birmingham, Ala.
87	Leo Sexton, Soph., E			19	6'2"	190	0	Atlanta, Ga.
88	Jimmy Phillips, Jr., E			20	6'2"	205	1	Alex City, Ala.
89	Jerry Elliott, Sr., E			23	6'1"	187	3	Birmingham, Ala.

"THE OFFICIAL WATCH FOR TIMING THIS GAME IS LONGINES —
THE WORLD'S MOST HONORED WATCH"

REFRESH

DRINK
Coca-Cola
REG. U.S. PAT. OFF.

-
- 1 Offside
 - 2 Illegal procedure, position or substitution
 - 3 Illegal motion
 - 4 Illegal shift
 - 5 Illegal return
 - 6 Delay of game
 - 7 Personal foul
 - 8 Clipping
 - 9 Roughing the kicker
 - 10 Unsportsmanlike conduct
 - 11 Illegal use of hands and arms
 - 12 Intentional grounding
 - 13 Illegally passing or handing ball forward
 - 14 Forward pass or kick catching interference
 - 15 Ineligible receiver downfield on pass
 - 16 Ball illegally touched, kicked or batted
 - 17 Incomplete forward pass, penalty declined, no play or no score
 - 18 Crawling, helping runner or interlocked interference
 - 19 Ball dead
 - 20 Touchdown or field goal
 - 21 Safety
 - 22 Time-out
 - 23 First down
 - 24 Ball ready for play
 - 25 Start the clock

SEE PAGE 28 FOR PENALTIES



COCA-COLA BOTTLING WORKS OF LEXINGTON, KENTUCKY

Live Modern, Boy...Smoke **L&M!**



AUBURN

PROBABLE STARTING LINEUP

No.	Name	Position
89	JERRY ELLIOTT	LE
75	BEN PRESTON	LT
67	ERNEST DANJEAN	LG
55	FRANK REEVES	C
66	CHUCK MAXIME	RG
74	PAUL TERRY	RT
88	JIMMY PHILLIPS	RE
11	JIMMY COOK	QB
25	TOMMY LORINO	LH
40	BILLY KITCHENS	RH
31	JIM WALSH	FB

11	Cook, QB
12	Riley, QB
15	Egge, QB
14	Wood, QB
18	Tubbs, QB
20	Hoppe, HB
25	Lorino, HB
29	Laster, HB
31	Walsh, FB
32	Jackson, FB
34	May, FB
39	Atkins, FB
40	Kitchens, HB
44	Nix, HB
45	Meagher, HB

THE TIGER SQUAD

47	Preis, HB	74	Terry, T
52	Ricketts, C	75	Preston, T
55	Reeves, C	76	Foret, T
57	Strain, C	77	Wester, T
58	Smith, C	78	Warren, T
60	Braswell, G	80	Simmons, E
61	Johns, G	81	Reece, E
65	LaRussa, G	83	Sansom, E
66	Maxime, G	84	Whatley, E
67	Danjean, G	85	Wilson, E
68	Baker, G	87	Sexton, E
69	Weekley, G	88	Phillips, E
70	Austin, T	89	Elliott, E
72	Presley, T		

My Chesterfields *Satisfy* the Most!



KENTUCKY

PROBABLE STARTING LINEUP

No.	Name	Position
83	ROGER PACK	LE
79	LOU MICHAELS	LT
67	BOB COLLIER	LG
55	DAVE KUHN	C
64	ARCHIE POWERS	RG
70	J. T. FRANKENBERGER . .	RT
89	AL ZAMPINO	RE
11	KENNY ROBERTSON . . .	QB
32	DON NETOSKIE	LH
28	BOB CRAVENS	RH
44	BOB DOUGHERTY	FB

11	Robertson, QB
16	Freeman, QB
17	Farley, QB
19	Hughes, QB
20	Sely, HB
21	I. Curnutte, HB
22	Gallagher, HB
25	Mitchell, HB
26	Herzog, HB
27	Allen, HB
28	Cravens, HB
30	Clere, HB
31	Mabry, HB
32	Netoskie, HB
33	Goins, HB
40	Tribble, FB
41	Bonich, FB
42	Sloan, FB
43	Morris, FB

THE WILDCAT SQUAD

44	Dougherty, FB	70	Frankenberger, T
45	G. Miller, FB	72	Bowie, T
47	Kunkle, G	73	Butler, T
50	Namath, C	74	Lindon, T
51	Living, C	75	Roth, T
53	Lombard, C	76	Cambron, T
54	Waite, C	77	Ilari, T
55	Kuhn, C	78	Moore, T
56	Blocker, C	79	Michaels, T
60	J. Miller, G	81	Charles, E
61	Goble, G	82	Urbaniak, E
62	D. Curnutte, G	83	Pack, E
64	Powers, G	84	Shively, E
65	Cain, G	86	Martin, E
66	Buchanon, G	87	Cornelius, E
67	Collier, G	88	Harrington, E
68	Bennett, G	89	Zampino, E
69	Lococo, G		

PAUSE



LOSS OF FIVE YARDS

- 1—Taking more than five times out during either half (except for replacement of injured player).
- 2—Illegal delay of game.
- 3—Failure to complete substitution before play starts.
- 4—Violation of kickoff formation.
- 5—Player out of bounds when scrimmage begins.
- 6—Putting ball in play before Referee signals "Ready-for-play".
- 7—Failure to maintain proper alignment of offensive team when ball is snapped. Also, backfield man illegally in motion.
- 8—Offside by either team or encroachment on neutral zone.
- 9—Attempt to draw opponents offside.
- 10—Crawling by runner.
- 11—Illegal forward pass (includes intentional grounding of forward pass). Also loss of down.
- 12—Taking more than two steps after Fair Catch is made.
- 13—Player on line receiving snap.
- 14—Any violation of the scrimmage formation.

LOSS OF FIFTEEN YARDS

- 15—Team not ready to play at scheduled time.
- 16—Violation of rules during intermission.
- 17—Illegal return of suspended player.
- 18—Interference by member of offensive team with defensive player making pass interception. (Also loss of down).
- 19—Interfering with the opportunity of a player of the receiving

PENALTIES

- team to catch a kick.
- 20—Illegal use of hands or arms by offensive player.
 - 21—Tackling or blocking defensive player who has made fair catch.
 - 22—Roughing the kicker.
 - 23—Piling up, hurdling, clipping.
 - 24—Tackling player out of bounds, or running into player obviously out of play.
 - 25—Coaching from sidelines.
 - 26—Failure to stop one full second following shift.
 - 27—Defensive holding.
 - 28—Invalid Signal for Fair Catch.

OTHER PENALTIES

- 29—Striking an opponent with fist, forearm, elbow or locked hands, kicking or kneeling — Mandatory disqualification of offending player plus loss of fifteen yards.
- 30—Foul within the one yard line — half the distance to the goal.
- 31—Interference by defensive team on forward pass — passing team's ball at spot of foul.
- 32—Forward pass being touched by ineligible receiver beyond the line of scrimmage—loss of fifteen yards from spot of preceding down and loss of a down.
- 33—Illegal touching of kicked ball within opponent's ten yard line — touchback.
- 34—Flagrantly rough play or unsportsmanlike conduct — Mandatory disqualification plus loss of fifteen yards.
- 35—Eligible pass receiver who goes out of bounds and later touches a forward pass — loss of down.

SEE PAGE 25 FOR OFFICIALS SIGNALS

DRINK

Coca-Cola

REG. U.S. PAT. OFF.

COPYRIGHT 1956, THE COCA-COLA COMPANY

COCA-COLA BOTTLING WORKS OF LEXINGTON, KENTUCKY

UNIVERSITY OF KENTUCKY ROSTER

No.	Name	Class	Pos.	Age	Ht.	Wt.	Ltrs.	Hometown	High School	Coach
11	Kenny Robertson, Jr.	QB		20	5'11"	189	1	West Palm Beach, Fla.	Palm Beach	H. M. Wittington
16	Jack Freeman, Sr.	QB		22	5'10"	160	0	Danville, Ky.	Danville	Pat James
17	Bill Farley, Sr.	QB		25	5'11"	177	2	Charleston, W. Va.	Stonewall Jackson	Russ Parsons
19	Delmar Hughes, Sr.	QB		21	6'1"	188	3	Prestonsburg, Ky.	Prestonsburg	Doc Ferrell
20	Edd Selvy	Soph.	HB	19	5'11"	182	0	Corbin, Ky.	Corbin	Bill Tucker
21	Ivan Curnutte, Jr.	HB		21	5'6"	165	0	Ashland, Ky.	Ashland	Charles Eblen
22	Jack Gallagher	Soph.	HB	20	5'10"	187	0	Cumberland, Ky.	Cumberland	Roy King
25	Billy Mitchell, Sr.	HB		21	6'2"	189	2	Georgetown, Ky.	Garth	Tom Green
26	Woody Herzog, Jr.	HB		20	5'11"	192	1	Hamilton, Ohio	Hamilton	Chuck Thackara
27	Dave Allen	Soph.	HB	19	5'11"	179	0	Hamilton, Ohio	Hamilton	Chuck Thackara
28	Bob Cravens	Soph.	HB	19	5'10"	191	0	Owensboro, Ky.	Owensboro	Joe O. Brown
30	Don Clere	Soph.	HB	20	5'11"	187	0	Ashland, Ky.	Ashland	Charlie Eblen
31	Dick Mabry	Soph.	HB	20	5'10"	179	0	Lexington, Ky.	Bullis M.A.	Harry Demning
32	Don Netoskie, Sr.	HB		22	5'11"	187	3	Martinsburg, W. Va.	Martinsburg	J. T. Cobourn
33	Carl Goins	Soph.	HB	19	6'	193	0	Madisonville, Ky.	Madisonville	Moose Zachem
40	Cliff Tribble	Soph.	FB	19	5'10"	184	0	Lebanon, Tenn.	Lebanon	Jim Babbs
41	Bob Bonich	Soph.	FB	20	6'	191	0	Lynch, Ky.	Lynch	Sam Potter
42	Paul Sloan	Soph.	FB	19	5'11"	190	0	Catlettsburg, Ky.	Catlettsburg	Charlie Snyder
43	Waymond Morris	Soph.	FB	20	5'10"	191	0	Owensboro, Ky.	Owensboro	Joe O. Brown
44	Bob Dougherty, Sr.	FB		24	6'	212	1	Bellevue, Ky.	Bellevue	Ben Flora
45	Garland Miller	Soph.	FB	20	5'10"	209	0	Louisville, Ky.	Southern	Mike Dubick
47	Dennis Kunkle	Soph.	G	19	5'11"	199	0	Beaver, Pa.	Beaver	Pete Kane
50	Frank Namath	Soph.	C	18	6'	203	0	Beaver Falls, Pa.	Beaver Falls	Schacheren Leland
51	Bill Livings	Soph.	C	20	6'2"	201	0	Montgomery, Ala.	Sydney Lanier	Bill Moseley
52	Lawson King, Jr.	C		20	5'11"	189	1	Belfry, Ky.	Belfry	Guy Patterson
53	Dick Lombard	Soph.	C	19	6'2"	202	0	Pittsburgh, Pa.	Westinghouse	Mike Dimpero
54	Dale Waite, Jr.	C		22	6'1"	194	0	Ludlow, Ky.	Ludlow	Paul Adams
55	Dave Kuhn, Sr.	C		20	6'2"	216	3	Louisville, Ky.	Male	Nick Denes
56	Dick Blocker	Soph.	C	19	6'2"	209	0	Louisville, Ky.	St. Xavier	John Meihaus
60	Jim Miller	Soph.	G	23	6'1"	190	0	Madisonville, Ky.	Madisonville	Moose Zachem
61	John Goble, Jr.	G		21	6'2"	198	0	Prestonsburg, Ky.	Prestonsburg	Doc Ferrell
62	Duke Curnutte, Sr.	G		23	6'	209	3	Ashland, Ky.	Ashland	Charles Eblen
64	Archie Powers, Jr.	G		20	5'11"	207	1	Williamsburg, Ky.	Williamsburg	Jack Miller
65	Ronnie Cain	Soph.	G	19	6'	203	0	Cumberland, Ky.	Cumberland	Roy King
66	Don Buchanon	Soph.	G	21	5'11"	206	0	Barbourville, Ky.	Barbourville	Herb Tye
67	Bob Collier, Jr.	G		20	6'1"	209	1	Jenkins, Ky.	Jenkins	Jim MacKenzie
68	Bob Bennett, Sr.	G		20	5'11"	208	2	Russell, Ky.	Russell	Fred Johnson
69	Vince Lococo	Soph.	G	19	5'11"	213	0	Louisville, Ky.	Flaget	Paul Miller
70	J. T. Frankenberger, Sr.	T		21	6'4"	226	2	Louisville, Ky.	Flaget	Paul Miller
72	Jim Bowie	Soph.	T	22	6'4"	204	0	Detroit, Mich.	M.M.I.	Capt. J. Reese
73	Jack Butler, Sr.	T		22	6'4"	220	2	Tompkinsville, Ky.	Tompkinsville	Darrell Carter
74	Bob Lindon	Soph.	T	21	6'	221	0	Hazard, Ky.	Hazard	Jim Caudill
75	Paul Roth	Soph.	T	19	6'3"	215	0	Chicago, Ill.	Lakeview	Ray Jacobson
76	Jim Cambron	Soph.	T	19	6'2"	224	0	Louisville, Ky.	Flaget	Paul Miller
77	John Ilari, Jr.	T		23	6'	207	1	Louisville, Ky.	Flaget	Paul Miller
78	Don Moore	Soph.	T	20	6'1"	198	0	Owensboro, Ky.	Owensboro	Joe O. Brown
79	Lou Michaels, Jr.	T		21	6'1"	229	1	Swoyerville, Pa.	Staunton M.A.	Albert McCue
81	Dick Charles	Soph.	E	20	6'	191	0	Murray, Ky.	Murray	Ty Holland
82	Jim Urbaniak, Jr.	E		20	6'	193	1	Fairmont, W. Va.	Fairmont	Paul Dawson
83	Roger Pack, Sr.	E		21	6'2"	202	2	Jenkins, Ky.	Jenkins	Delmas Freeman
84	Doug Shively	Soph.	E	19	6'2"	197	0	Lexington, Ky.	Lafayette	Tony Salvato
86	Jack Martin	Soph.	E	20	5'11"	196	0	Corbin, Ky.	Corbin	Bill Conde
87	John Cornelius, Jr.	E		20	6'4"	206	1	Bethesda, Md.	Chevy Chase	John Sandusky
88	Roger Harrington, Sr.	E		23	5'9"	163	0	Louisville, Ky.	Manual	Mike Basrak
89	Al Zampino, Sr.	E		25	6'1"	192	3	Philadelphia, Pa.	Bok Tech	Max Siani

FOR COMPLETE REPORTS ON THIS GAME AND OTHERS BEING PLAYED TODAY, READ THE SPORTS SECTION OF SUNDAY HERALD-LEADER

HERE'S A SMART PLAY!

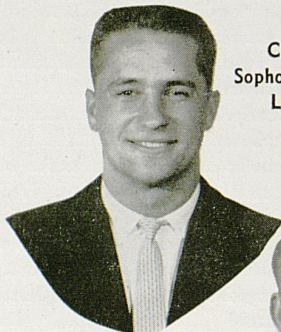
WHILE AT THE BALL GAME

**"LEAVE YOUR PARKING
PROBLEM AT
DICK WEBB'S"**

**MAMMOTH
GARAGE**

**MAIN & ROSE
PHONE 4-7908**

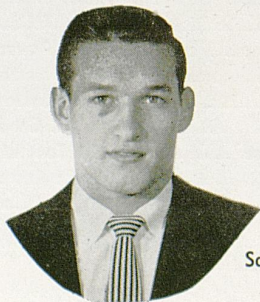
**LEXINGTON'S
NEWEST, BIGGEST
Parking Garage**



CLIFF TRIBBLE
Sophomore — Fullback
Lebanon, Tenn.

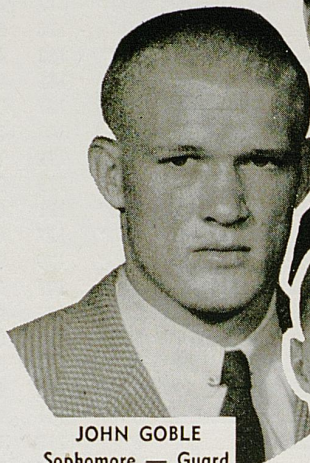
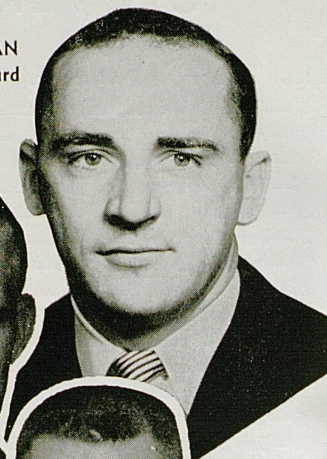


BOB CRAVENS
Sophomore — Halfback
Owensboro, Ky.

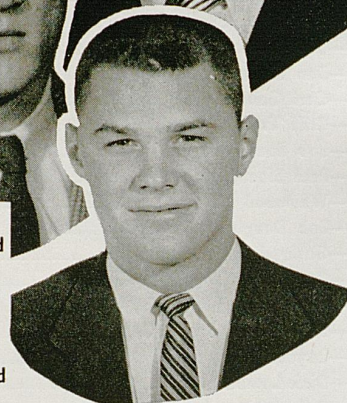


EDD SELVY
Sophomore — Halfback
Corbin, Ky.

DON BUCHANNAN
Sophomore — Guard
Barbourville, Ky.



JOHN GOBLE
Sophomore — Guard
Prestonsburg, Ky.



DOUG SHIVELY
Sophomore — End
Lexington, Ky.

Perry Lumber Co.

"Contractors & Builders"

- Lumber
- Builders Supplies
- Roofing
- Mill Work
- Hardware
- Paint
- Sporting Goods
- Appliances

— Easy Parking —

246 WALTON AVE.

LEXINGTON, KY.

WV LK *Dial* 590

originating station
All U of K GAMES on



FOOTBALL NETWORK



PLAY-BY-PLAY WITH
Claude Sullivan

CENTRAL KENTUCKY'S SPORTS STATION

Follow U. of K. with Claude Sullivan On the Standard Oil Network



WKCT
BOWLING GREEN

WFKY
FRANKFORT

WAVE
LOUISVILLE

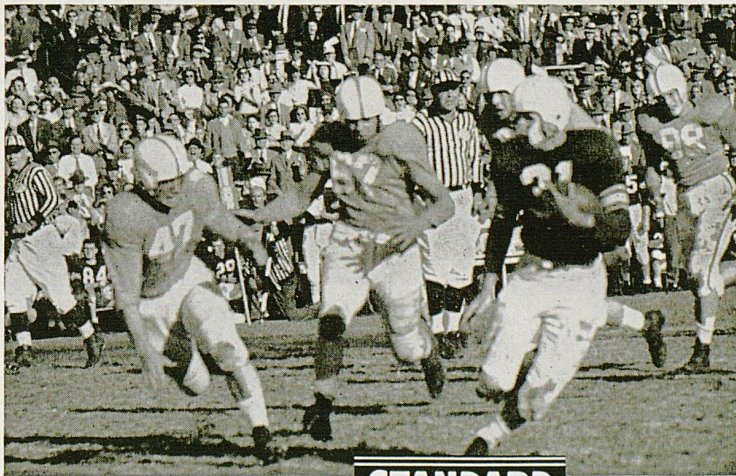
WPAD
PADUCAH

WCTT
CORBIN

WVLK
LEXINGTON

WVJS
OWENSBURG

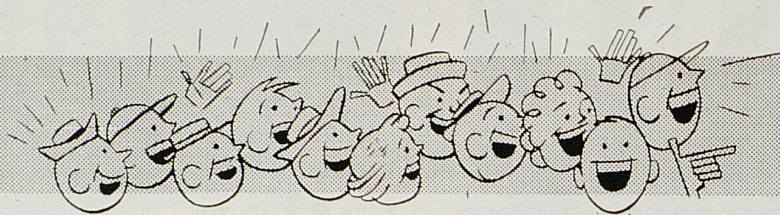
WPRT
PRESTONSBURG



Brought by your



Dealer



CHEER...from your car or easy chair

Be sure to see all Kentucky "Wildcat" football games this fall that you possibly can . . . but if you can't cheer from the stadium, you can listen to thrilling play-by-play radio accounts of Kentucky's games over more than 40 local Kentucky radio stations.



SPONSORED BY

**ASHLAND OIL & REFINING COMPANY
and AETNA OIL COMPANY**



Again, For The 24th STRAIGHT YEAR!

ALL OF THE U. OF K.'S FOOTBALL AND BASKETBALL GAMES
ON THE AIR OVER

WLAP

— KENTUCKY'S OLDEST AND LEXINGTON'S MOST POWERFUL —

And Again — For The 8th STRAIGHT YEAR!

Originating the Ashland-Aetna 36-Station Hook-up serving you,
at home, over your own station on

THE SOUTH'S GREATEST SPORTS NETWORK

Follow The "Cats" Wherever They Go!

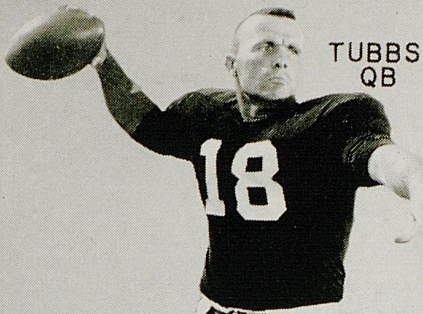
In person, if possible, if not, keep tuned to . . .

— 630 ON YOUR DIAL —

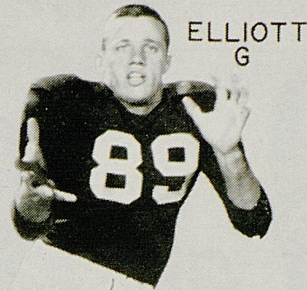
Co-Sponsored on WLAP By —

BALL & CO. and YORK-LEXINGTON CO.

SCORES OVER STOLL FIELD PUBLIC-ADDRESS SYSTEM COME TO
YOU THROUGH THE COURTESY OF THE LEXINGTON NEWSPAPERS



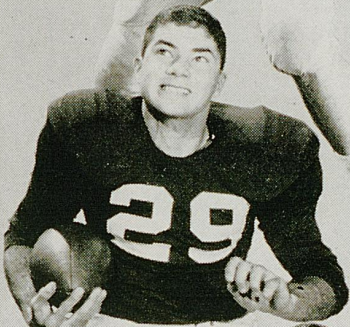
TUBBS
QB



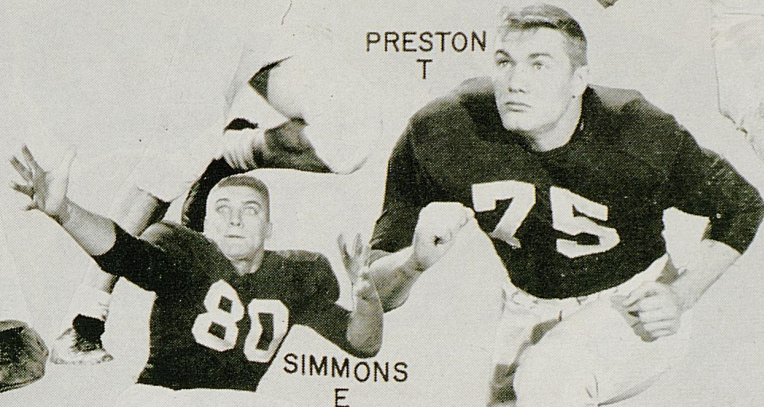
ELLIOTT
G



HOPPE
HB



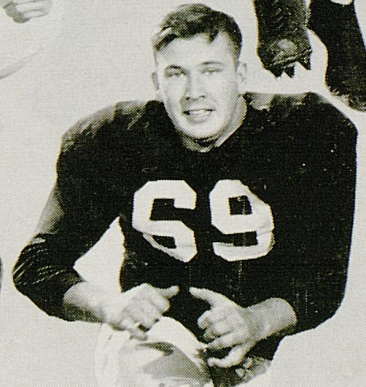
PREIS
HB



PRESTON
T



SIMMONS
E

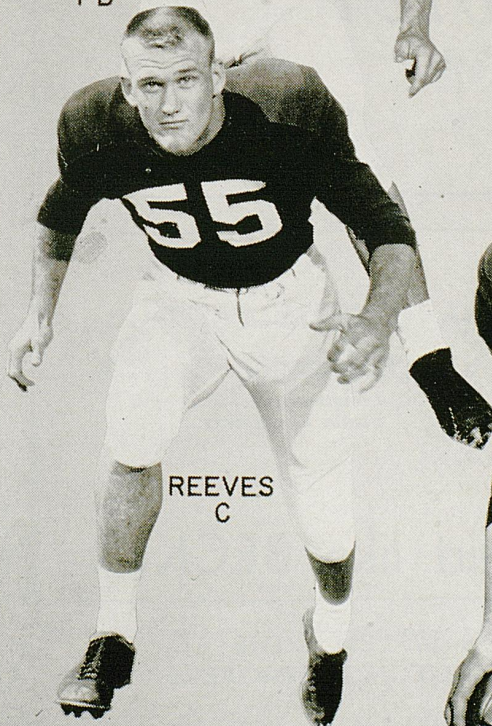


WEEKLEY
G

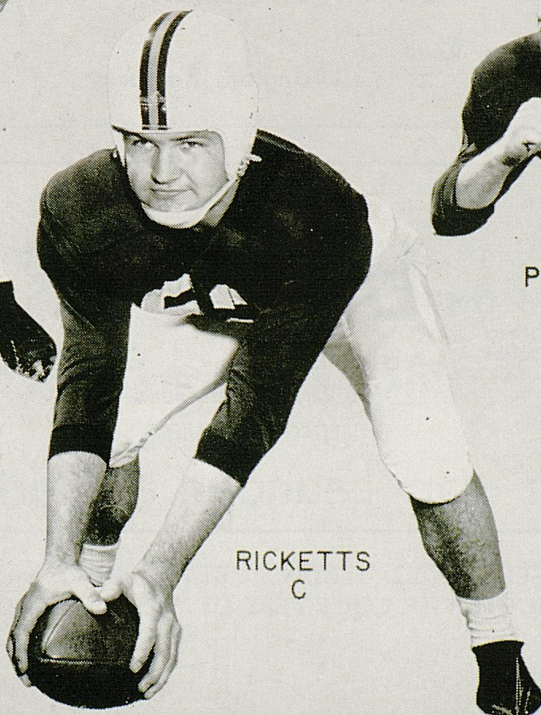


WALSH
FB

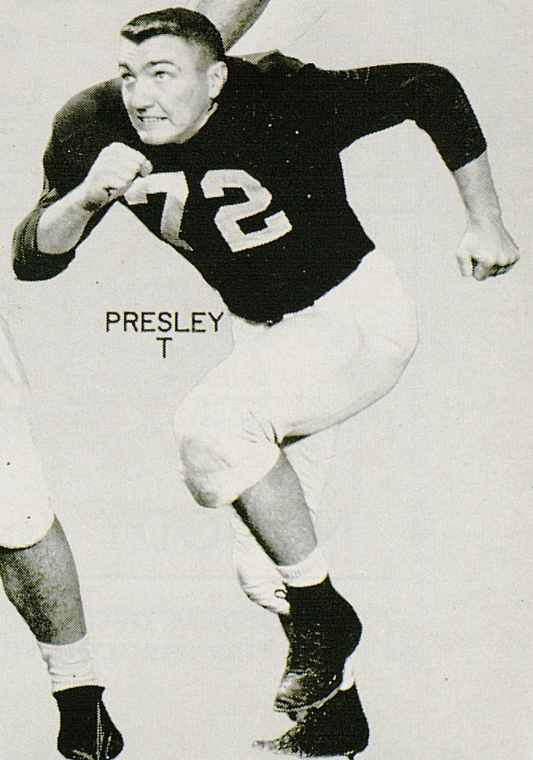
The Tigers



REEVES
C

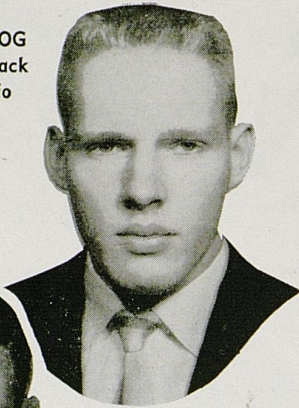


RICKETTS
C

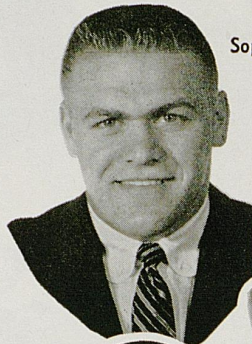


PRESLEY
T

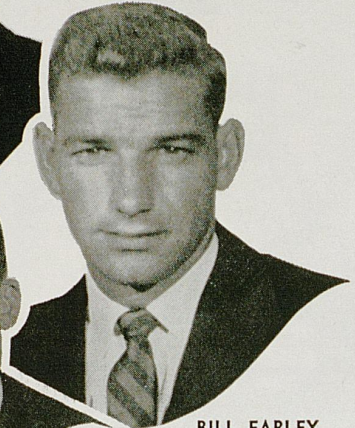
WOODY HERZOG
Junior — Halfback
Hamilton, Ohio



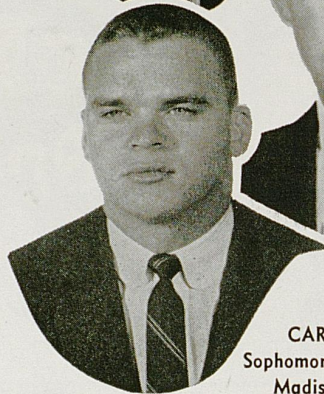
PAUL SLOAN
Sophomore — Fullback
Cattlettsburg, Ky.



J. T. FRANKENBERGER
Senior — Tackle
Louisville, Ky.



BILL FARLEY
Senior — Quarterback
Charleston, W. Va.



CARL GOINS
Sophomore — Halfback
Madisonville, Ky.

Enjoy Your Lexington Visit
At The

Ranch Motel

EASTERN CITY LIMITS — U. S. 60

1133 Winchester Road

Lexington, Kentucky

Phone 2-0777

Exclusive

LUSTERWAY
DRY Drycleaning
Guarantees cleaner,
brighter, and softer
garments.

BECKER

LAUNDERERS CLEANERS
5 Convenient Locations

LUX
LAUNDRY
Everything washed in
gentle Lux Flakes.

Exclusive

NOBODY can Launder a Shirt like BECKER

SCORES OVER STOLL FIELD PUBLIC-ADDRESS SYSTEM COME TO
YOU THROUGH THE COURTESY OF THE LEXINGTON NEWSPAPERS

Laundry

Dry Cleaning

DeBoor

One Day Service Monday thru Friday

No Added Cost

15 Per Cent Discount

and

Curb Service

AT

**265 EUCLID AVE.
PHONE 3-0235**

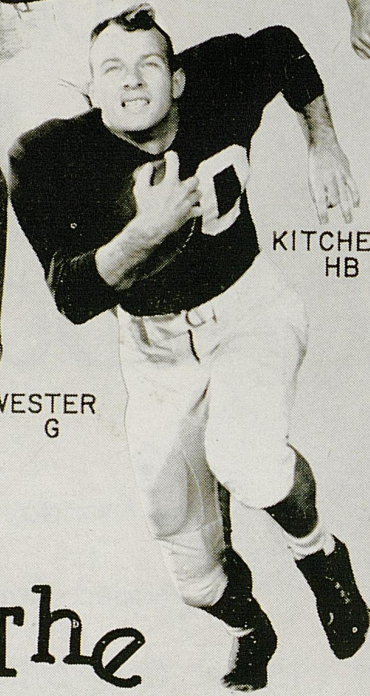
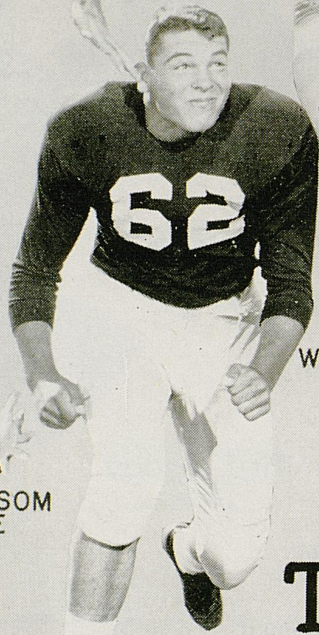
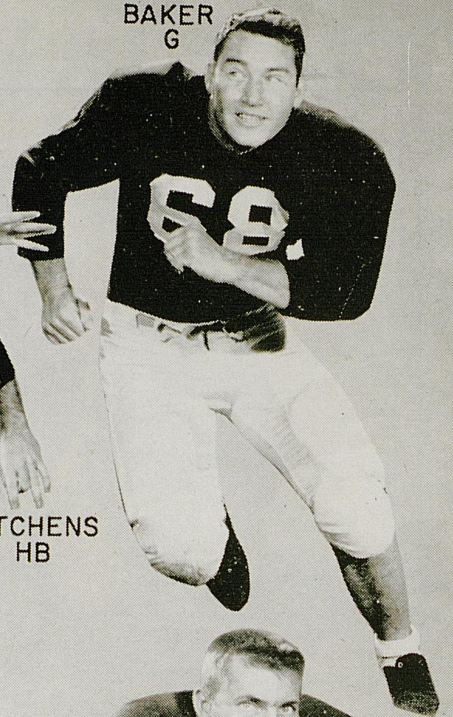
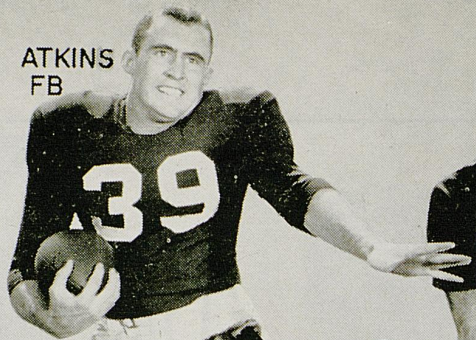
**880 E. HIGH ST.
PHONE 2-7046**

**1966 HARRODSBURG PIKE
PHONE 5-1488**

LORINO
HB

ATKINS
FB

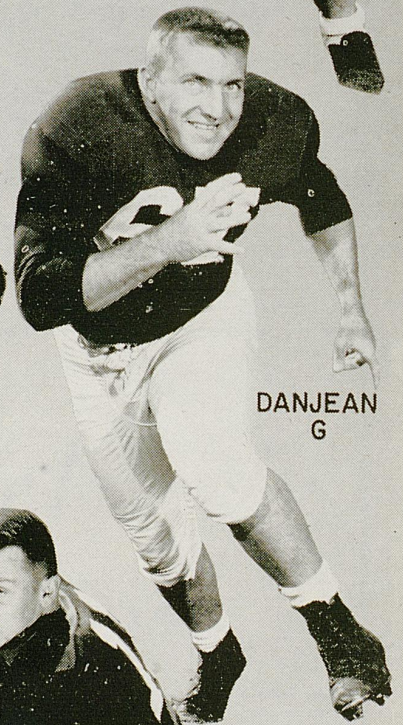
BAKER
G



KITCHENS
HB

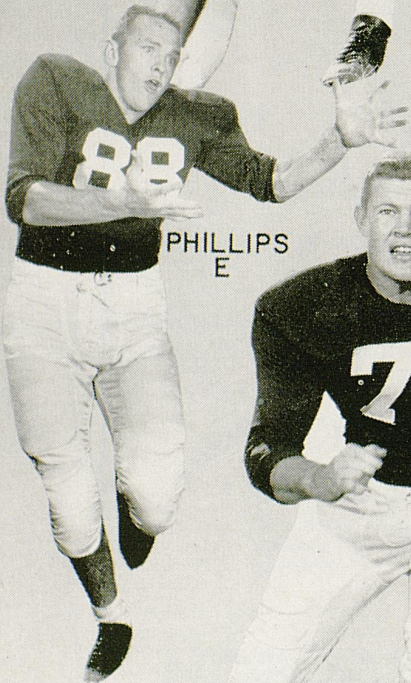


WESTER
G

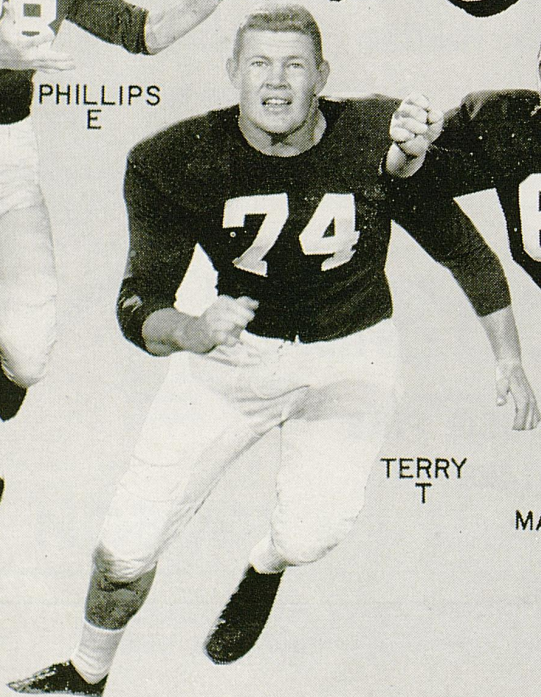


DANJEAN
G

The Tigers



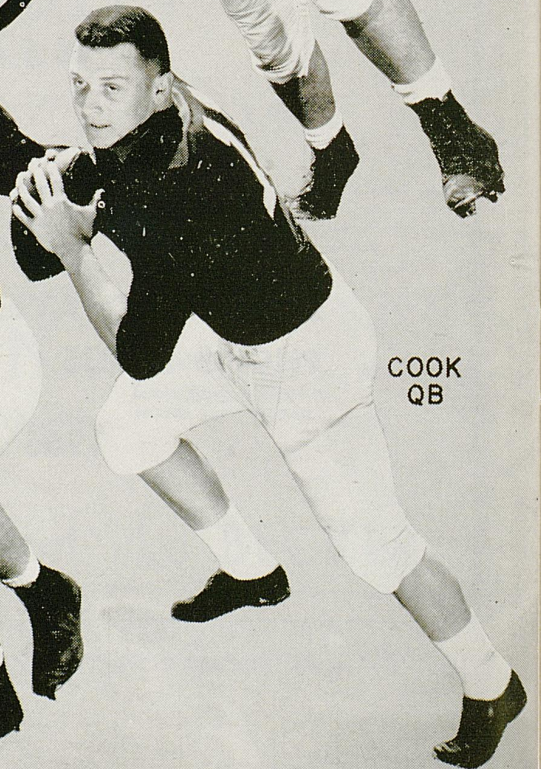
PHILLIPS
E



TERRY
T



MAXIME
G



COOK
QB

PURCELL'S

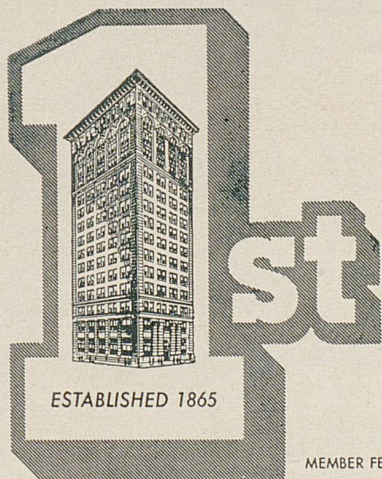
Central Kentucky's Largest Department Store

... Your ONLY One Stop Shopping Center

EVERYTHING UNDER ONE ROOF:

- Courtesy
- Dependability
- Economy

322 WEST MAIN STREET, LEXINGTON, KENTUCKY



*Winning
More
Friends
Every
Season!*



MEMBER FEDERAL DEPOSIT INSURANCE CORPORATION

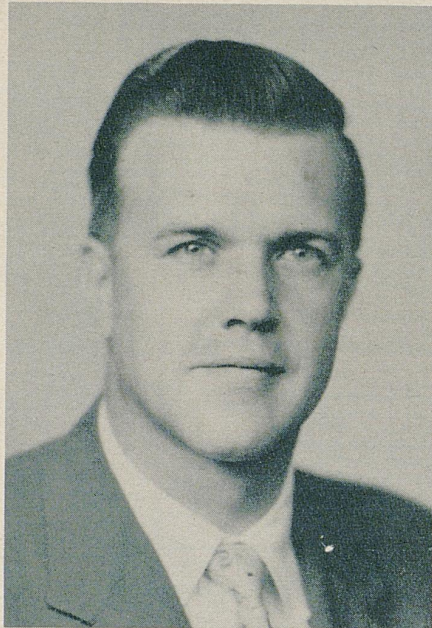
MEMBER FEDERAL RESERVE SYSTEM

**FIRST NATIONAL BANK
and Trust Company**

OUR 92nd YEAR OF SERVICE IN THE BLUE GRASS AREA

FOR COMPLETE REPORTS ON THIS GAME AND OTHERS BEING PLAYED
TODAY, READ THE SPORTS SECTION OF SUNDAY HERALD-LEADER

*We Serve You Even Better
in our 10th year.*



FRANK PURDY
General Manager

In the same convenient location

155 E. High St.

With convenient parking

Behind the Kentuckian Hotel

FIFE, COOKE & PURDY
General Insurance

Dial: 2-9966
or: 4-0919

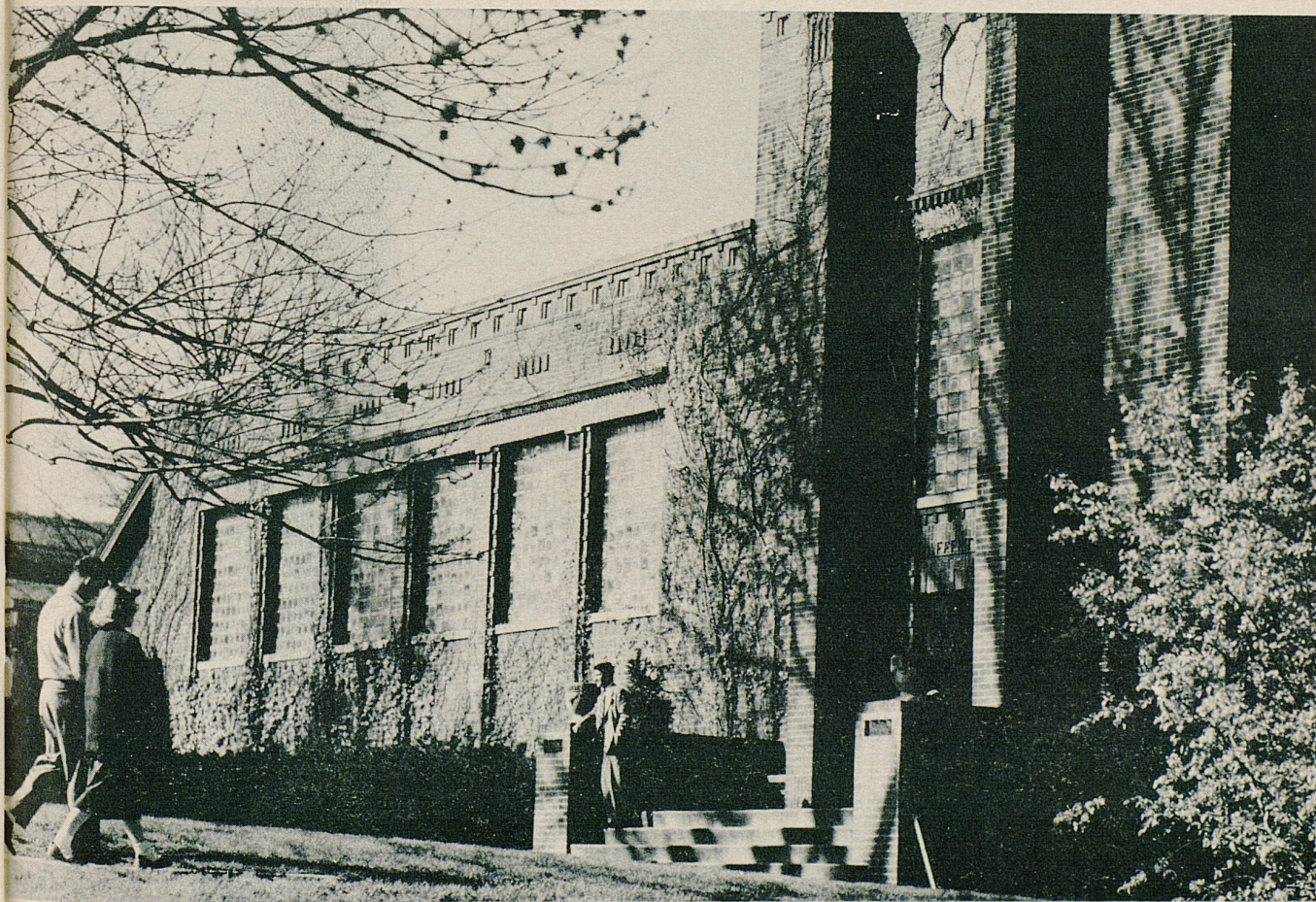
"Honestly, it's the best policy"

In the Kentuckian
Hotel Building

COLLEGE OF LAW

Law students at the University are offered an opportunity to obtain initial and fundamental training in the knowledge, understanding, skills, and techniques of thinking which members of the profession use in solving legal problems. They are shown that such training is a process which continues throughout their careers. The College of Law has long been fully accredited by all agencies that establish standards for law schools. It has a chapter of the Order of the Coif, an honor society for the recognition of excellence in law study. The KENTUCKY LAW JOURNAL is on all recognized lists of leading legal periodicals. The college library of some 50,000 carefully selected volumes is one of the finest in the South.

A VIEW OF LAFFERTY HALL



Buy with Confidence at . . .



Next to Union Station in Lexington



**Do You
Motor?
Travel?**

Attend football
games and other
athletic events?
Then examine a

Bausch & Lomb Binocular at Tinder-Kraus-Tinder. Note its great light gathering power, wide field, ease of use, and rugged construction. Enthusiastically recommended by sportsmen, Army and Navy Officers, aviators and other users as "The World's Best By Any Test."



Tinder-Kraus-Tinder
Opticians—Photographic Supplies

145 N. Upper Street

Lexington

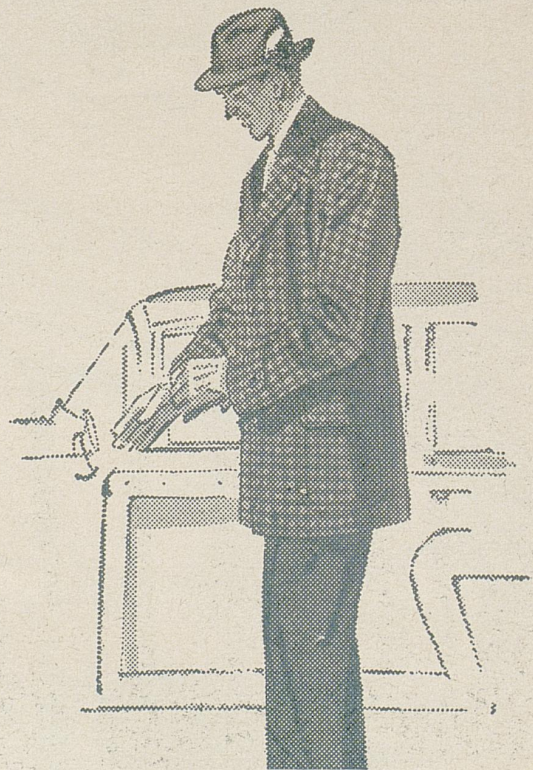
New Fashion Note for Fall

SUBURBAN COATS

Enjoy new comfort in the stadium . . . new freedom in motoring . . . with a Suburban Coat. Ideal for all spectator-sports, this new fashion goes just as far as your finger tips. See it at Lexington's leading stores .

The Association Of Men's Stores Of Lexington

ANGELUCCI & RINGO	KAUFMAN'S
BOMANZI	MAXSON'S
GRAVES, COX & CO.	MEYERS



SCORES OVER STOLL FIELD PUBLIC-ADDRESS SYSTEM COME TO YOU THROUGH THE COURTESY OF THE LEXINGTON NEWSPAPERS

THE STORE WHERE QUALITY LEADS

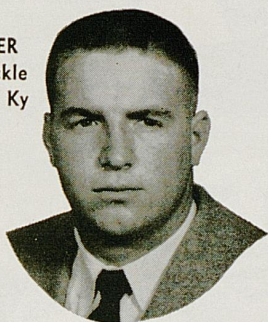
Standard furniture company

221 East Main Street

Lexington, Kentucky

PRICES TO FIT EVERY BUDGET

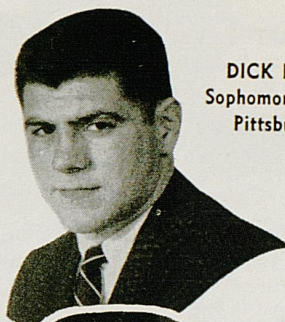
JACK BUTLER
Senior — Tackle
Tompkinsville, Ky



JIM URBANIAK
Junior — End
Fairmont, W. Va.

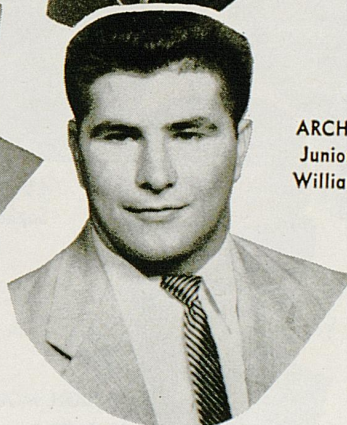


DICK LOMBARD
Sophomore — Center
Pittsburgh, Pa.

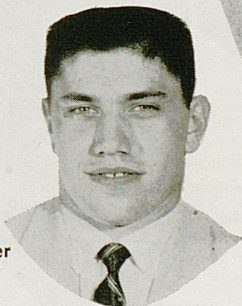


BILL LIVINGS
Sophomore — Center
Montgomery, Ala.

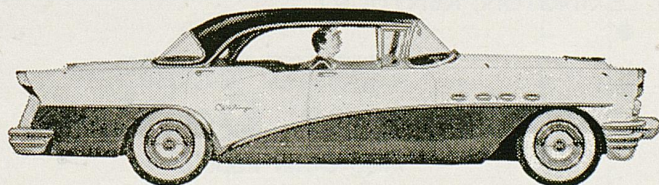
ARCHIE POWERS
Junior — Guard
Williamsburg, Ky.



FRANK NAMATH
Sophomore — Center
Beaver Falls, Pa.



HERE'S THE BEST BUICK YET!



1956 Buick CENTURY 4-Door, 6-Passenger Riviera Model 63

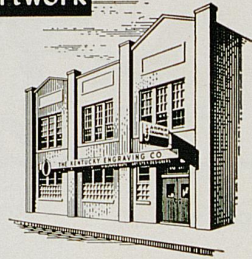
See it at

SHUG GLENN BUICK, INC.
116 E. High Street
LEXINGTON, KENTUCKY

FOR COMPLETE REPORTS ON THIS GAME AND OTHERS BEING PLAYED TODAY, READ THE SPORTS SECTION OF SUNDAY HERALD-LEADER

Photo-Engravings-- Multilith and Offset Plates--Mats--Artwork

Our new plant offers the largest and finest facilities in the Blue Grass for the production of all types of newspaper and fine screen photo-engraving, lithographic plates, newspaper mats and artwork. We would appreciate an opportunity to prove to your firm the higher quality of our work and service. Phone or write.

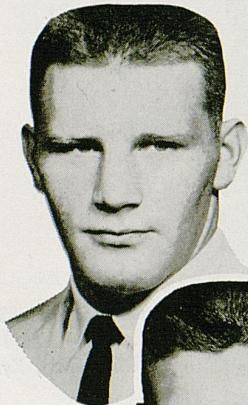


The Kentucky Engraving Co.

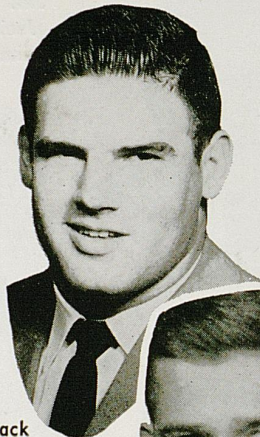
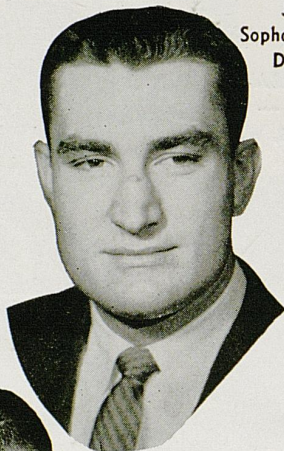
430 West Short Street

Lexington, Ky.

JACK MARTIN
Sophomore — End
Corbin, Ky.



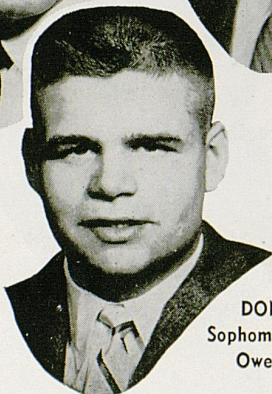
JIM BOWIE
Sophomore — Tackle
Detroit, Mich.



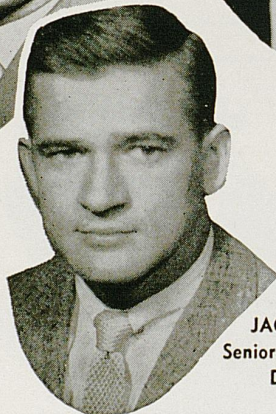
DON CLERE
Sophomore — Halfback
Ashland, Ky.



DALE WAITE
Junior — Center
Ludlow, Ky.



DON MOORE
Sophomore — Tackle
Owensboro, Ky.



JACK FREEMAN
Senior — Quarterback
Danville, Ky.

HARRY ALDRIDGE MOTORS

AND LEXINGTON AUTO-BODY

133 MIDLAND

PHONE 3-3163

LEXINGTON, KENTUCKY

Lexington's

HUDSON DEALER

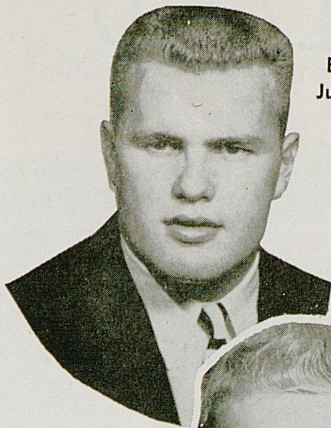
Featuring The
ALL NEW RAMBLER

YOUR AUTHORIZED

Jaguar Dealer

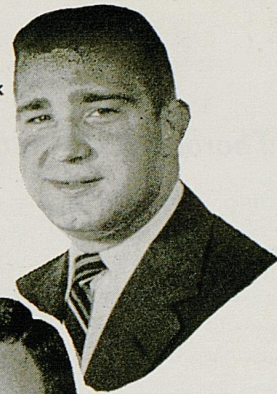
Also Other Popular
SPORTS CARS

SCORES OVER STOLL FIELD PUBLIC-ADDRESS SYSTEM COME TO YOU THROUGH THE COURTESY OF THE LEXINGTON NEWSPAPERS

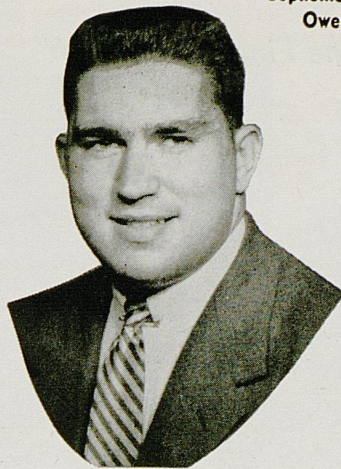


BOB COLLIER
Junior — Guard
Jenkins, Ky.

WAYMOND MORRIS
Sophomore — Fullback
Owensboro, Ky.



ROGER HARRINGTON
Senior — Halfback
Louisville, Ky.



BOB LINDON
Sophomore — Tackle
Hazard, Ky.



KENNY ROBERTSON
Junior — Quarterback
West Palm Beach, Fla.

Hargett Construction Co.

INCORPORATED

General Contractors

Phone 2-2992

113 Walton Avenue

Lexington, Ky.

ONE STOP SHOPPING

With

A Lunch Counter and

Large Restaurant

McCRORY'S

5 - 10 - 25

STORE

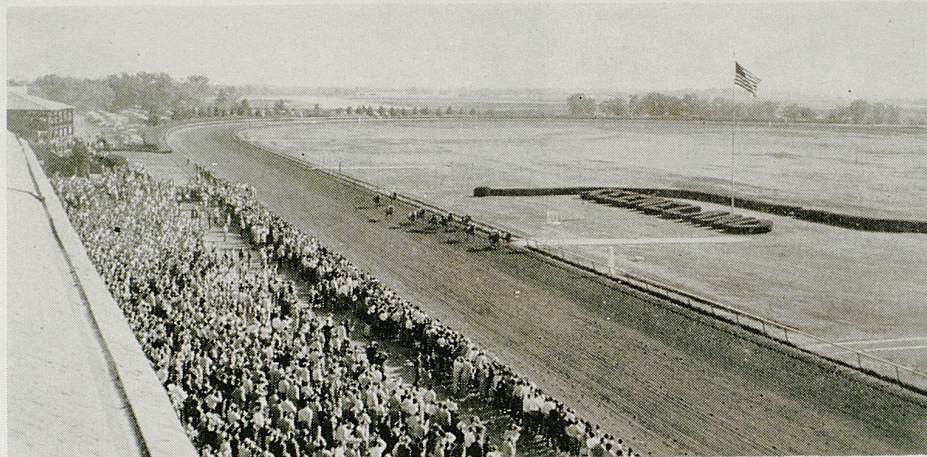
Phoenix Hotel Building

Lexington, Kentucky

FOR COMPLETE REPORTS ON THIS GAME AND OTHERS BEING PLAYED
TODAY, READ THE SPORTS SECTION OF SUNDAY HERALD-LEADER

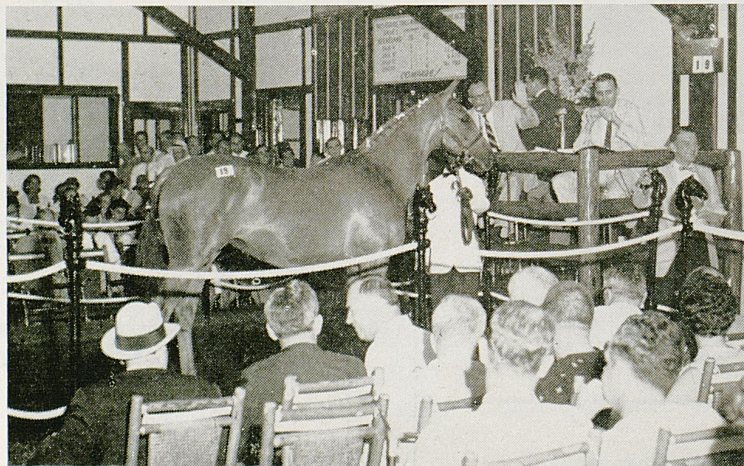
KEENELAND

"Thoroughbred Racing In The Finest Tradition"



Keeneland is dedicated to the principle that racing is sport before it is a business. Primary considerations have been given to a safe racing strip, the programming of a maximum number of races for the better class horses, the staging of races for fillies and mares, and an emphasis on racing for two-year-olds.

"World's Greatest Thoroughbred Sales"

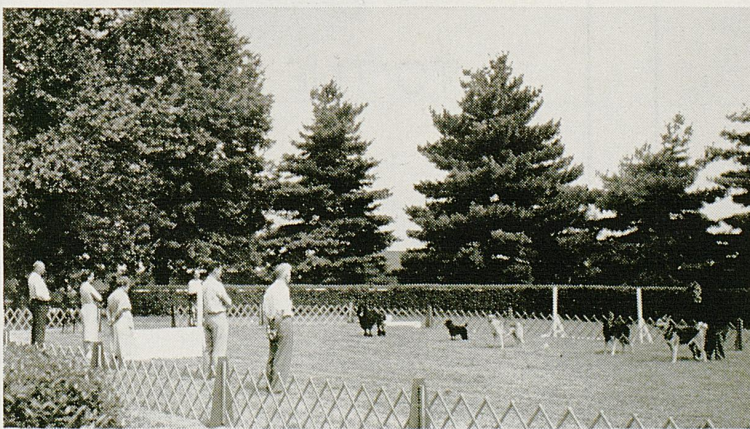


The world famous Keeneland Sales, conducted by the Breeders' Sales Company, are held on the race course grounds. The Summer Yearling Sales have produced Kentucky Derby winners Jet Pilot, Dark Star and Determine. Other Keeneland sales yearlings include Oil Capitol, Hasty Road, High Gun, Helioscope, Imbros, Errard King, Greek Ship, Queen Hopeful, Ruhe, With Pleasure, Turn-To, Ace Admiral, Cosmic Bomb, and White Skies. Following the fall race meeting, the sales company conducts a yearling sale, followed by a sale of breeding stock.

"Year-Round Citizen"



Since its inaugural meeting of 1936, Keeneland has donated over \$800,000 to charitable, educational, and research organizations. Of this total, over \$530,000 has been given the University of Kentucky—\$200,000 to assist in the building of Keeneland Hall, a girl's dormitory, the balance to the College of Agriculture.



Keeneland is a non-profit race course, with all earnings above expenses going to charitable, educational, and research institutions. No officer receives a salary or expense account. Officers and directors pay to attend the races. No individual can profit from the sale of the track properties, for in such an eventuality, the proceeds of such a sale are earmarked for charitable distribution.

Keeneland Race Course is the scene of several cattle shows and sales yearly. A spring and fall dog show is conducted by the Lexington Kennel Club.

Many organizations—civic, religious, and fraternal—make use of the spacious grounds and facilities for picnics, each year.

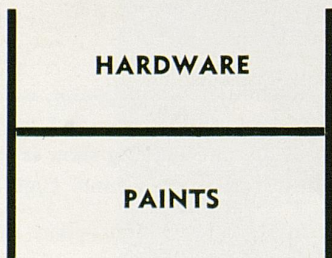
— THE LEXINGTON SALESMEN CLUB —



FRONT ROW: (left to right) Andrew A. Brown, Roland Worth, Ed Inman, Oscar Langley, Ray Frazier, Burkitt Stephenson, Charles Thompson, Jack Mullins, Bill Kleiser, Russ Graves, George Scott, Gordon Tiedt, James Bowman, Arthur M. Butler, Ed Abraham, Ralph Farmer.
 SECOND ROW: Joe Hanson, D. S. Holman, John Warington, L. D. Nickles, Henry Schwabe, George Daniels, Bob Bradley, Frank Horak, Buford Halfhill, Glenn Riggs, Morton Petrie, George Stanfill, Bill Grall.
 THIRD ROW: Ralph Karsner, Galton Jones, Marion Prater, Ed Kellermann, Terry Grissom, Jim Mundell, Ken Lambert, Bob Crabtree, Joe Papania, Earl Crouch, J. T. Reynolds, Ellery Chase, C. V. Rose, Ed Lancaster, Dick Reddick, George Horine.
 FOURTH ROW: Wes Mastin, Ed Miller, Howard Isaacs, Charles Seeberger, Glenwood Webb, Jim Beard, Barney Stall, Thurman Measel, Mark Sharff, Paul Bryant, Charles White, Ralph Rambicure, Bob Swope, E. H. Porter, George Metcalfe, Russ Campbell, Norman Burke.

INTERNATIONAL HARVESTER

Parts — Service



ECTON SUPPLY CO., Inc.

1060 W. High St.

Phone 3-5727

Lexington, Ky.

Leave Your Parking Problems

At Home

RIDE THE BUS
TO THE GAME



Lexington Railway System, Inc.

R

NO ORDER TOO SMALL — NO DISTANCE TOO GREAT

R

— AT —

SAGESER

Pharmacy
Short and Mill
4-2662

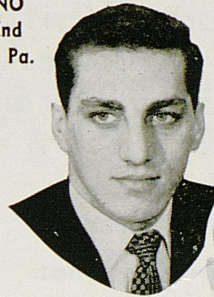
Apothecary
Opposite Good Samaritan
4-9660

Both Locations — A Complete Drug Store

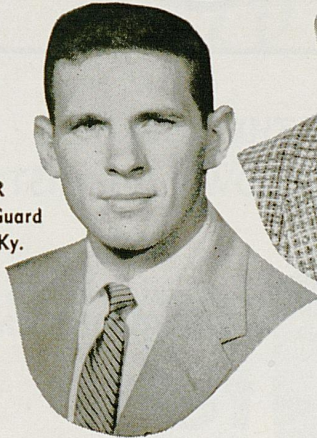


DICK BLOCKER
Sophomore — Center
Louisville, Ky.

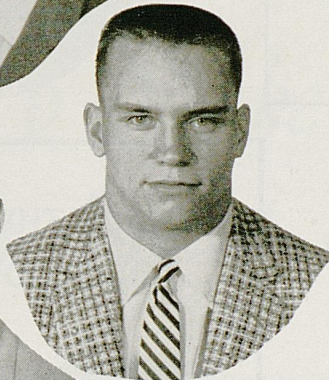
AL ZAMPINO
Senior — End
Philadelphia, Pa.



IVAN CURNUTTE
Junior — Halfback
Ashland, Ky.

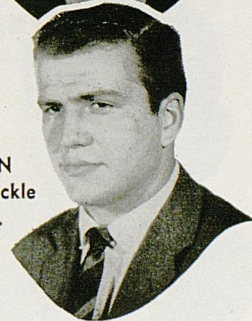


JIM MILLER
Sophomore — Guard
Madisonville, Ky.



PAUL ROTH
Sophomore — Tackle
Chicago, Ill.

JIM CAMBRON
Sophomore — Tackle
Louisville, Ky.



Lexington Yellow Cab Co.

Inc.

ALL
RADIO CABS

Dial 2-2230

ALL
RADIO CABS

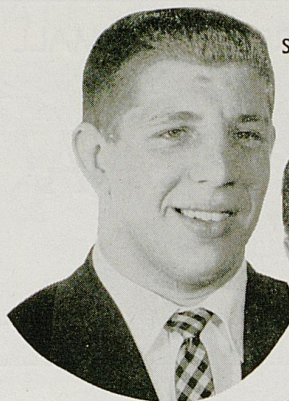
FOR COMPLETE REPORTS ON THIS GAME AND OTHERS BEING PLAYED
TODAY, READ THE SPORTS SECTION OF SUNDAY HERALD-LEADER

ASHLAND DAIRIES

PRODUCTS Excel in Quality.

Ashland Dairies VAC-HEAT
Process Insures Uniform
Good Taste . . . Bottle After
Bottle . . . Glass After Glass
Every Day of the Year.

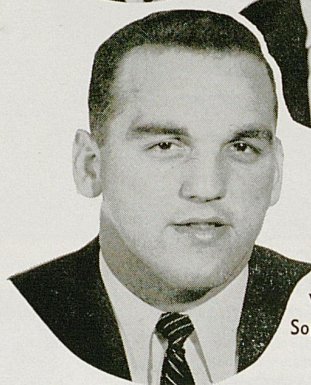
**At Your Grocer
From Your Routeman**



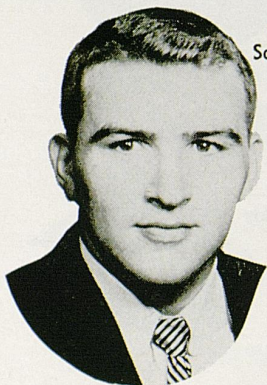
DENNIS KUNKLE
Sophomore — Guard
Beaver, Pa.



RONNIE CAIN
Sophomore — Guard
Cumberland, Ky.



VINCE LOCOCO
Sophomore — Guard
Louisville, Ky.



GARLAND MILLER
Sophomore — Fullback
Louisville, Ky.



LAWSON KING
Junior — Center
Belfry, Ky.



JOHN ILARI
Junior — Tackle
Louisville, Ky.

THE GREATEST TOUCHDOWN IN HISTORY!



...thousands are now
TEBBING their shoes...

teb

Amazing new shoe polish discovery
that instantly shines and polishes your
shoes in one simple step.

teb

One bottle for all colors of smooth
leather.

39

shines,
only

39¢

teb

No muss . . . No fuss. Will not stain, rub
off, or soil hands, fabrics, rugs.

Get TEB today from your favorite grocery, drug, novelty or shoe store.

Answers to "MYSTERY WILDCATS"—Ralph Kercheval (left) and
Clyde Johnson

We're Pulling For . . .

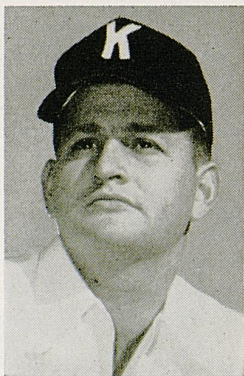
KENTUCKY'S
WILDCATS

*To Make 1956
A Great Season*

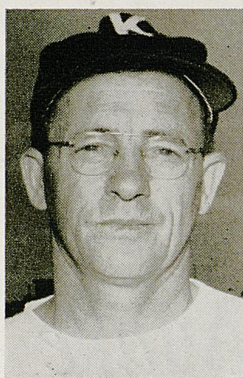


Campus Book Store

Everything for the Student



JOHN PAYNE
Trainer



BUSTER BROWN
Equipment Mgr.



BOBBY HOLT
Student Mgr.



**When the Chips are Down
and You Must Produce—**

you'd better count on the guy who can deliver the best goods the fastest! There is not a person who has handled printing who has not needed fine engravings in the fastest time possible. Lexington Photo-Engraving Company is geared for "Fast Production . . . fine reproduction". We supply newspapers, magazines, and printers throughout Central Kentucky with the finest engravings obtainable anywhere.

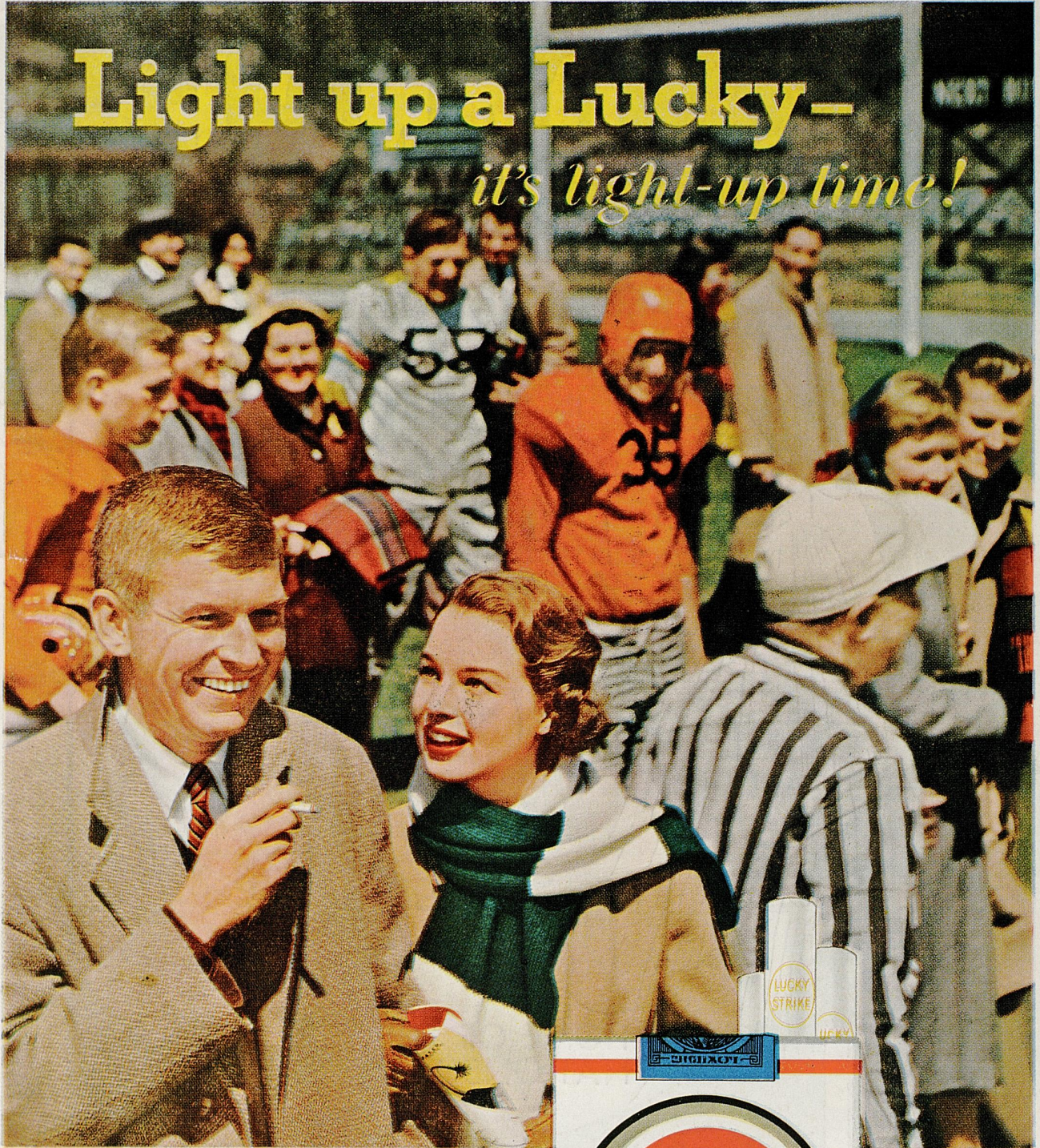
LEXINGTON PHOTO-ENGRAVERS

223 W. SHORT ST.

PHONE 3-5015

SCORES OVER STOLL FIELD PUBLIC-ADDRESS SYSTEM COME TO
YOU THROUGH THE COURTESY OF THE LEXINGTON NEWSPAPERS

Light up a Lucky—
it's light-up time!



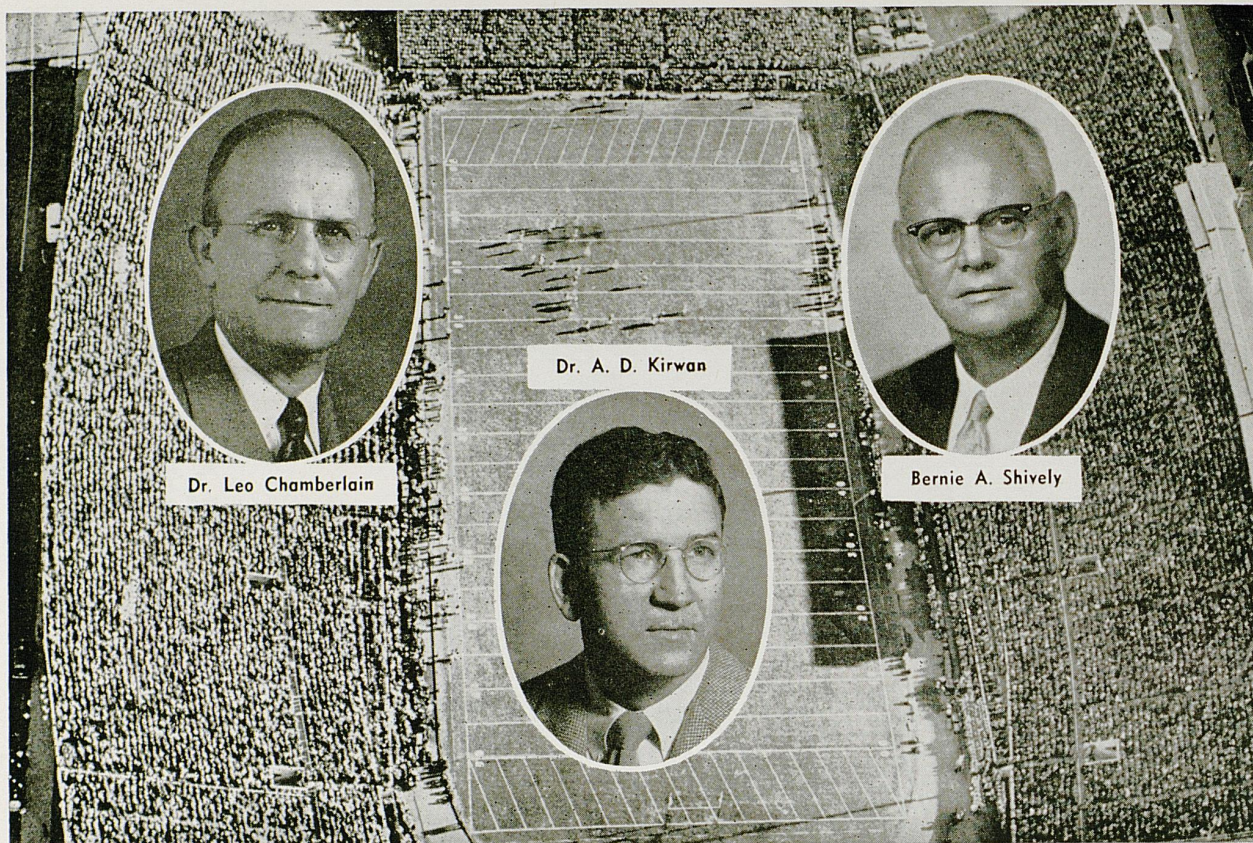
Luckies
Taste Better

Cleaner, Fresher, Smoother!



"IT'S TOASTED"
to taste better!

© A. T. Co. PRODUCT OF *The American Tobacco Company* AMERICA'S LEADING MANUFACTURER OF CIGARETTES



Dr. Leo Chamberlain

Dr. A. D. Kirwan

Bernie A. Shively

Athletics at Kentucky

Kentucky's athletics program is organized under the Department of Athletics and a corporation known as the University of Kentucky Athletics Association.

A firm believer in sports and sportsmanship, Dr. Leo M. Chamberlain, Vice-President of the University, has general supervision over the Department and also serves as vice chairman of the Board of Directors of the Association.

Former UK football player and one-time Wildcat coach, Dr. A. D. Kirwan, acts as secretary to the Association. He also is the school's faculty representative to the Southeastern Conference.

Supervising the steady growth and balanced development of one of the nation's top athletic programs as Director of Athletics is Bernie A. Shively. The former Illinois All-America footballer has guided the development of Kentucky as a nationally-respected power in major sports since 1938 and gained wide prestige through a fair-minded approach to many problems. Under his direction, the seating capacity of McLean Stadium has been doubled, powerful lighting equipment installed to

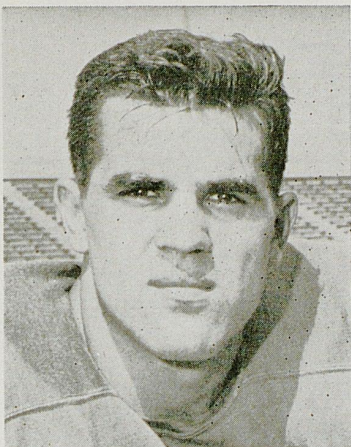
bring night football into new popularity, mammoth Memorial Coliseum constructed, new practice facilities and two modern living units (Wildcat Manor and Kitten Lodge) provided for the grid-iron teams.

Maintaining over-all control of U.K. athletics affairs is the Board of Directors of the Athletics Association, composed of the President of the University and 10 other directors appointed by him, including five members of the faculty of the University, the president of the Student Government Association, an alumnus of the school, a member of the U.K. Board of Trustees, and two others. Frank D. Peterson, University Vice President of Business Administration, serves the board as treasurer.

The current Board of Directors consists of:

Dr. Frank G. Dickey,
Chairman
Dr. A. D. Kirwan,
Secretary
Dr. Ralph Angelucci
Thomas H. Ballantine
George K. Brady
Aubrey J. Brown
Thomas Clark
Lyman Ginger

Dr. Leo M. Chamberlain,
Vice Chairman
Richard K. Lehman
(Student)
Robert Hobson
Alfred L. Crabb
Paul Oberst
H. D. Palmore
D. V. Terrell
William A. Tolman



LOU MICHAELS
Junior — Tackle
Swoyerville, Pa.

When usually-placid professional scouts abandon their reserved composure to drool over an "interior" lineman—and a sophomore to boot—it's a pretty good tipoff that they have spotted a potentially great prospect. Such is the case of UK's great tackle Lou Michaels. With only one season of varsity play under his belt, the mature young giant from Swoyerville, Pa., is already being tabbed by the experts as a potential All-American. At 6-2 and 230 pounds, Michaels has the physical equipment to go along with great ability, strength, speed, agility and a keen mind—attributes of a great football player—and Coach Collier classes Lou as "one of the best I have seen in collegiate ranks."

Before the 1955 season opened, Coach Collier had grave doubts that his fullback situation was as sound as it should be and wondered if big Bob Dougherty, after a three-year absence from collegiate competition, could get the job done. The smiling Irishman from Bellevue, Ky., every inch the battering-ram type of fullback that is a coach's dream, had already been picked by the Los Angeles Rams for a future in pro ball. But he remained the big question mark nevertheless. Subsequent action by Mr. Dougherty, as one of the leading ground gainers in the conference and outstanding defense man, proved all worries needless, and served notice that the 212-pound lad will be a serious force to be reckoned with in '56 as he goes after All-Conference honors.



BOB DOUGHERTY
Senior — Fullback
Bellevue, Ky.

OFFICIAL WATCH FOR



U. S. OLYMPIC
COMMITTEE
1948-1952-1956



NAT'L AERONAUTIC
ASSN.



NAT'L COLLEGIATE
ATHLETIC ASSN.
CHAMPIONSHIPS



AMERICAN AUTO-
MOBILE ASSN.



NATIONAL SKI
ASSN.



AMERICAN
POWERBOAT
ASSN.



AAU
CHAMPIONSHIPS



NATIONAL HORSE
SHOW ASSN.

and many others

Longines

THE WORLD'S MOST HONORED WATCH

Official Watch for the

KENTUCKY GAMES

Longines, first watch of sport, is recognized as official for timing world records and international events by all international sports and contest associations. Every Longines watch, for whatever its use, is made to be the best of its kind. For yourself, as a gift, no other name on a watch means so much as Longines, the world's most honored watch.

Longines Wittnauer Watch Company



10 WORLD'S FAIR
GRAND PRIZES
28 GOLD MEDALS



Longines watches to cope with outdoor life—fully protected against all common watch hazards. For her—Longines Skylark "A.P." For him—Longines Sportsman "D", each \$89.50. Other Longines watches from \$71.50.



KENTUCKY'S COACHING STAFF. Head Coach Blanton Collier (center, seated) goes over the rugged 1956 schedule of the Wildcats with aides. In back, from the left are Freshman Coach John North; Bill Arnsperger, offensive line coach; Ed Rutledge, freshman backfield coach; and Dominic Fucci, defensive backfield coach. Seated are Charles Bradshaw, end coach; Matt Lair, defensive line coach; and Ermal Allen, backfield coach.

THE WILDCATS' 1956 SCHEDULE

Date	Opponent	UK	Opp.	Date	Opponent	Place
Sept. 22	*Georgia Tech, Lexington	6	14	Oct. 27	*Georgia	14 7
Sept. 29	*Ole Miss, Memphis	7	37	Nov. 3	Maryland	14 0
Oct. 6	*Florida, Gainesville	17	8	Nov. 10	*Vanderbilt	Lexington (H)
Oct. 13	*Auburn, Lexington	0	13	Nov. 17	Xavier	Lexington
Oct. 20	*L. S. U.	14	0	Nov. 24	*Tennessee	Knoxville

* SEC GAME. (N) Night Game. (H) Homecoming. Home games start at 2 p.m. and 8 p.m.

Recommended by

Duncan Hines

The Golden Horseshoe

Nationally Famous . . .

Lexington's Finest

Colonel Harry Ware
at the Organ and Piano

SCORES OVER STOLL FIELD PUBLIC-ADDRESS SYSTEM COME TO YOU THROUGH THE COURTESY OF THE LEXINGTON NEWSPAPERS

Try
Parkette's
Famous
"Poor Boy"

"Before
And After
The Game
Or Show,
The Parkette's
The Place
To Go"



19 OTHER
DELICIOUS
SANDWICHES !

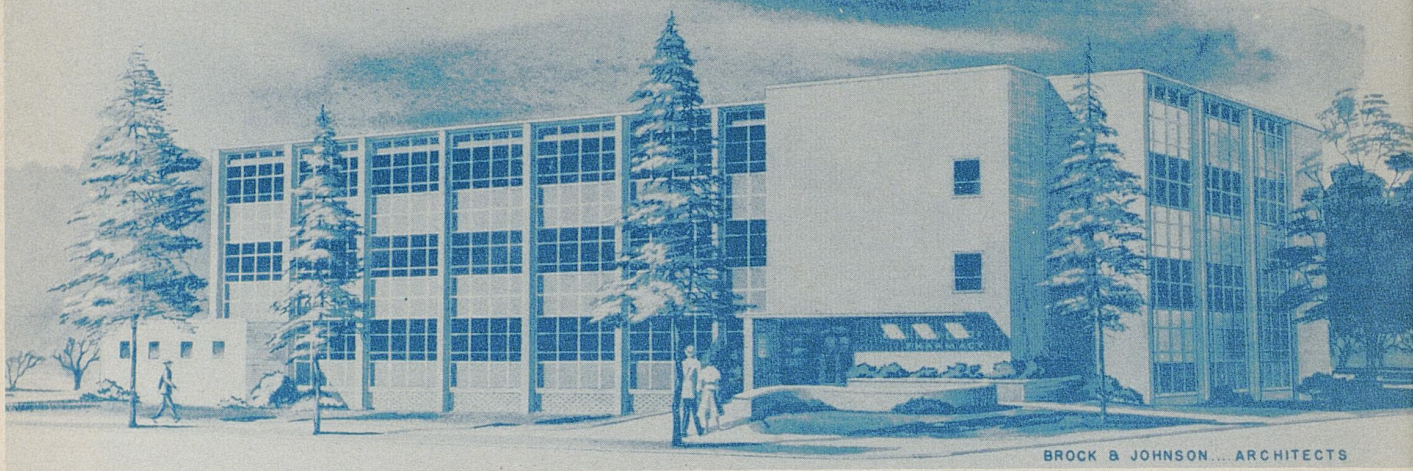
CHICKEN OR
JUMBO SHRIMP !
IN THE BOX

GIANT
MILK
SHAKES !

NOW THERE ARE "2"
Parkette Drive Inns

No. 1—Northeast Beltline . . . On Bypass 25—Phone 4-8723

No. 2—Off Beltline Georgetown Rd. U.S. 25—Phone 2-8617



BROCK & JOHNSON... ARCHITECTS

ARCHITECT'S SKETCH OF NEW PHARMACY BUILDING, LEXINGTON

COLLEGE OF Pharmacy

Young men and women of superior ability will find great opportunities in pharmacy. The great majority of students in pharmacy elect to practice the profession in retail stores and there are many positions open in this field—the neighborhood drug store, the apothecary shop, and the chain store. Training in this field comprises a stepping stone toward the objective of most pharmacy students: to own and operate their own stores. Graduates of the UK College of Pharmacy also occupy responsible positions as manufacturing and research pharmacists and chemists; as analysts for state and federal food, drug, and dairy departments; as directors of public health service laboratories; as teachers in colleges of pharmacy; and in the Medical Corps of the armed forces.

