

LEXINGTON

KENTUCKY

SANBORN PERKINS



SCALE 50 FT. TO AN INCH

117 BROADWAY New York.

Dec. 1890

COPYRIGHT 1891 BY THE SANBORN-PERRIS CO. LIMITED.

INDEX.

STREETS.		J		P		SPECIALS.		N	
A						A			
Ayres Alley,.....	10	Jefferson,.....	1-60 7	Pine, E.,.....	1-34 3	Wilkliffe,.....	11	Florentine Hotel,.....	8
			146-180 16	" W.,.....	35-60 4	Allen & Thompson, Soap Factory,.....	1-20 18	Fry, S. V., Carriage Warehouse,.....	8
				" W.,.....	35-142 2	Winklow,.....	4	Newberry, W. H., Wagon Shop,.....	11
				" W.,.....	200-255 24	Woolams Place,.....	6	Nichols, Quisenberry & Co., Warehouse,.....	24
								Northern Bank Building,.....	12
Ballard,.....	7	Lawrence,.....	3	Plankett,.....	3			Nottingham & Bro., Roller Mills,.....	11
Barr,.....	11	Limestone, N.,.....	1-29 9	Poplar Alley,.....	2			Orphans' Home,.....	16
Bolivar, E.,.....	1-23 8	" "	31-35 12					Overyby Tobacco Co.,.....	9
" W.,.....	2-22 4	" "	37-109 11	Rose,.....	1-30 15				
Bradley,.....	1-12 11	" "	188-221 25						
Broadway, N.,.....	1-25 8	" S.,.....	405-460 16	Second, E.,.....	1-65 14	Adams, W. W., Livery,.....	10	Palace Hotel,.....	10
" "	2-24 9	" "	405-460 16	" W.,.....	1-23 14	Allen & Thompson, Soap Factory,.....	14	Patrick, W., Livery,.....	9
" "	27-50 13	" "	405-460 16	" W.,.....	1-23 14	A. M. E. Church,.....	18	Pepper Distillery,.....	21
" "	28-38 13	" "	405-460 16	" W.,.....	1-23 14	Ashland Distillery,.....	18	" J. E. & Co., Distillery,.....	21
" "	30-164 14	" "	405-460 16	" W.,.....	1-23 14	" Hotel,.....	12	Phenix Hotel,.....	10
" "	235-265 16	Lower,.....	1-42 8	Short, E.,.....	1-79 12	" Roller Mills,.....	11	" Woolen Mills,.....	10
" S.,.....	1-43 8	" "	134-219 2	" "	2-78 9			Pleasant Green Baptist Church,.....	2
" "	2-48 9	" "	134-219 2	" "	80-180 10			Presbyterian Church,.....	4
" "	31-129 6	" "	134-219 2	" "	81-179 11			Public Library,.....	12
" "	131-218 8	Magowan, N.,.....	1-30 15	" W.,.....	181-250 25				
" "	132-220 8	" S.,.....	1-10 15	" W.,.....	2-30 9				
" "	222-255 4	" "	1-50 9	" W.,.....	32-124 8				
Brown,.....	6	" "	81-192 10	" W.,.....	35-123 13				
		" "	194-267 15	" W.,.....	135-198 7				
		" "	285-320 15	" W.,.....	200-214 15				
		" "	340-357 23	Spring, N.,.....	1-20 8				
Cedar, E.,.....	1-30 3	" W.,.....	1-33 3	" S.,.....	1-48 8				
" W.,.....	1-30 3	" "	34-128 8	" S.,.....	160-137 6				
Cheapside,.....	9	" "	130-229 7	" S.,.....	140-217 2				
Church, E.,.....	1-70 12	" "	240-293 15	Spruce,.....	2-78 25				
" W.,.....	1-28 12	Manchester,.....	1-88 13	Sycamore,.....	2-78 25				
Clark,.....	1-40 11	" "	1-88 13						
Combs,.....	1-40 11	Market,.....	1-84 12	Third, E.,.....	1-66 14				
Constitution,.....	2-112 11	" "	90-125 14	" "	185-214 23				
		" "	1-29 5	" "	1-24 14				
		" "	2-50 4	" W.,.....	125-160 2				
Correll,.....	1-26 22	" "	32-142 2	Tipson,.....	6				
Cott,.....	1-20 15	Maxwell, E.,.....	1-29 5						
Cross,.....	21-106 18	" "	2-50 4						
		" W.,.....	32-142 2						
		" "	2-50 4						
		" "	31-143 6	Upper, N.,.....	1-24 9				
Daly Place,.....	6	" "	32-142 2	" "	236-81 12				
Dewees,.....	1-164 20	" "	90-125 14	" "	84-103 14				
Dunaway Alley,.....	2	Mechanic,.....	1-21 7	" "	190-231 25				
		" "	2-56 8	" "	411-460 16				
		" "	50-132 6	" S.,.....	1-48 8				
Edwards Place,.....	14	" "	134-196 2	" "	50-147 5				
Esten Ave.,.....	23	" "	1-24 9	Clarendon Hotel, 124 E. Main,.....	150-147 5				
		Mill, N.,.....	1-24 9	Commonwealth Distillery Co.,.....	151-241 8				
		" "	25-83 12	County Court House,.....	152-338 4				
Fourth, E.,.....	25-50 25	" "	88-140 14	" " Jail,.....	242-257 3				
" W.,.....	270-325 17	" "	50-147 5		259-275 3				
		" "	131-248 3						
		" "	1-29 9	Versailles Pike,.....	Merino to Lower 6				
Georgetown St.,.....	7	Mulberry, N.,.....	1-29 9	" "	270-300 24				
" Pike,.....	1-64 7	" "	2-54 10	" "	2-54 10				
Gills Alley,.....	7	" "	36-88 11	Vernier,.....	1-78 9				
Green,.....	7	" "	31-85 12	" "	80-185 10				
		" "	82-109 14	" "	1-29 9				
		" "	188-221 23	" "	25-115 8				
		" "	405-460 16	Eastern Kentucky Lunatic Asylum,.....	1-29 9				
		" "	405-460 16	Electric Belt Line Co.,.....	29-106 11				
		" "	1-49 9	Episcopal Church,.....	1-32 9				
		" S.,.....	2-48 10	" "	1-78 9				
		" "	65-147 9	" "	79-185 10				
		" "	153-234 4	Water, E.,.....	1-78 9				
		" "	2-48 10	" "	1-32 9				
		" "	153-234 4	" W.,.....	34-127 8				
		New,.....	14	" "					

* Indicates only one side of Street shown.

Dec. 1890
LEXINGTON
KY.

POPULATION, 25,000
Prevailing Winds So West
WATER FACILITIES Holly System of Water Works
Direct Pressure 2 Duplex Pumps Capacity
3 Million Galls. per 24 Hours. Reservoir 1000
25 Acres. 17 Deep Capacity 100 Million Gallons
Extra Capacity 30 Acres 200 Million Galls.
10 1/2 Miles of 14 Pipes 250 Hydraulic Hyets
Domestic Pressure 40 lbs. Fire Pressure 80 lbs.
50 Public Cisterns, Capacity 600,000, exhausted
monthly.
FIRE DEPARTMENT - 12 Paid Men - 5 Horses,
22 Fire Alarm Boxes, 1 Steam Fire Engine,
3 Hose Carts, 2000 2 1/2" Rubber Hose, 1000
2 1/2" Cotton Hose.

KENTUCKY
19
ASS'N GROUNDS

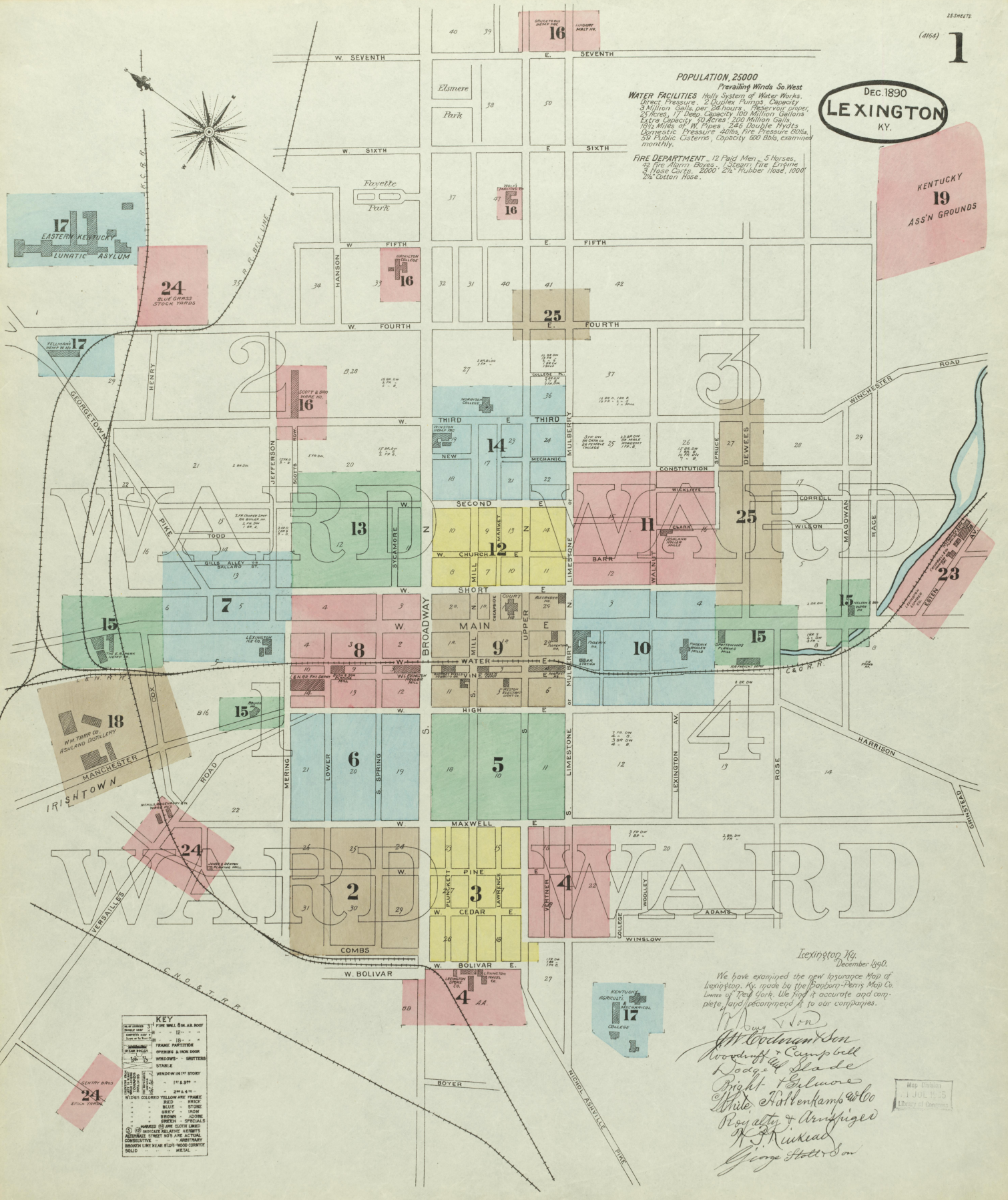
KEY

1	THE WELLS BAR ROOF
2	FRAME PARTITION
3	OPENS & SHUT DOOR
4	WINDOWS - SHUTTERS
5	STABLE
6	WINDOW IN 1ST STORY
7	FRAME
8	2 1/2" x 4 1/2"
9	STOPS COLORED YELLOW FRAME
10	BRICK
11	BLUFF
12	STONE
13	GRAY
14	ROCK
15	BROWN
16	ADDER
17	GREEN
18	SHEDS & SHEDS (SOUTH LANE)
19	INDICATE RELATIVE HEIGHTS
20	ADDER (SOUTH LANE) THE ACTUAL
21	ARBITRARY
22	BROKEN LINE LEAD BIRD'S NEST CORNER
23	SOLID
24	METAL

Lexington Ky.
December 1890.
We have examined the new topographic Map of
Lexington, Ky. made by the Bondurant-Perry Map Co.
Lovers of True Work. We find it accurate and com-
plete, and recommend it to our companies.

*M. W. Van
W. C. Woodruff & Campbell
W. D. G. G. G. G.
Bright & Gilmore
White, Advenkamp & Co
Royalty & Amey
R. H. H. H.
George H. H. H.*

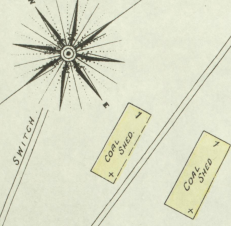
Map of Lexington
JULY 1895
Library of Congress



MERINO

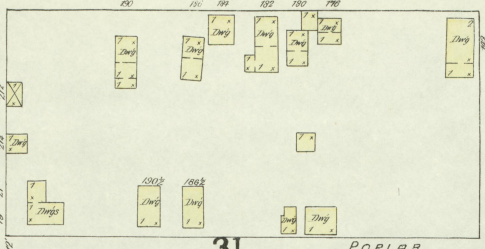
DEC. 1890
LEXINGTON
KY.

1st WARD

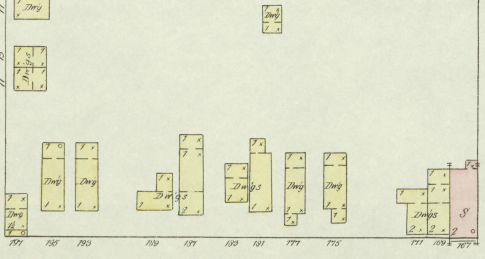


KINKEAD BROS
COAL YARD.

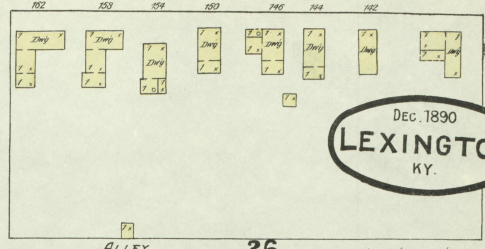
COAL SHED.



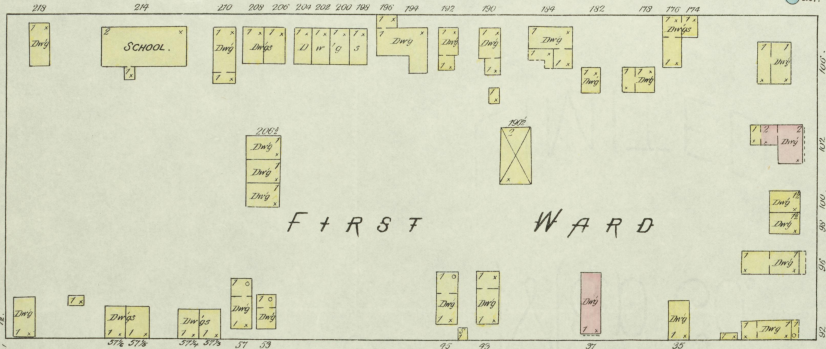
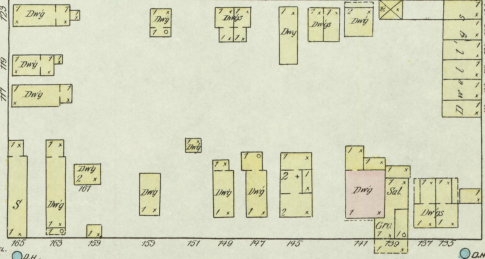
31 POPLAR



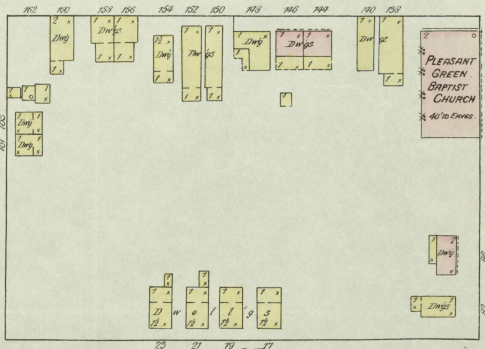
LOWER



ALLEY 26



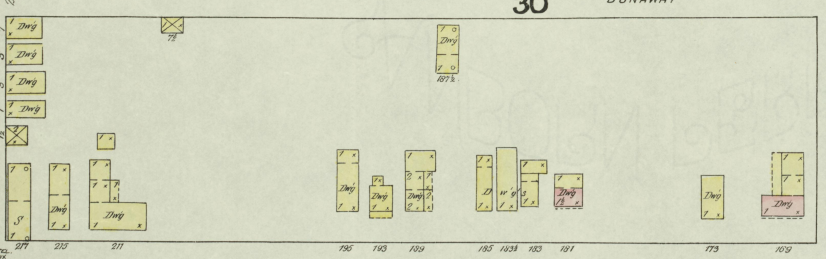
FIRST WARD



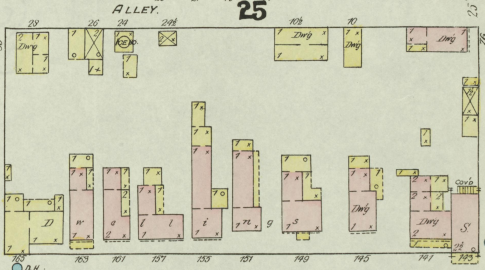
PLEASANT GREEN
BAPTIST CHURCH

W. PINE

COMBS

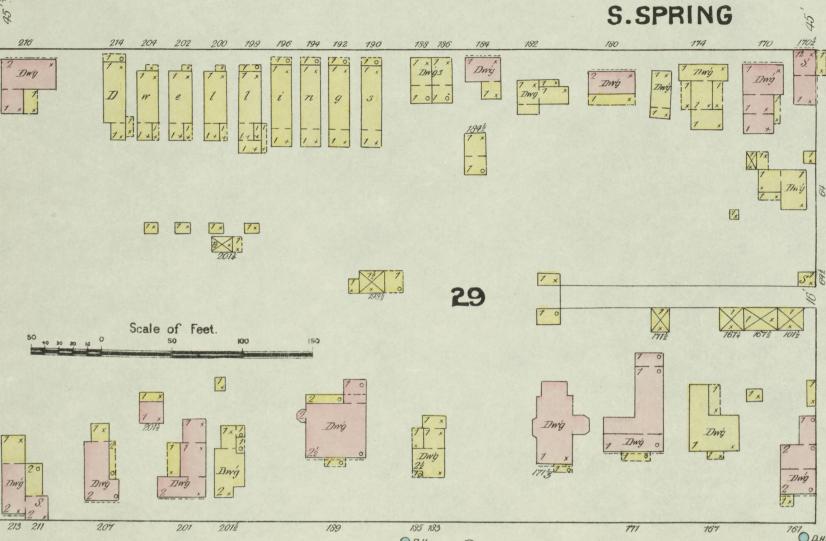


30 DUMAWAY



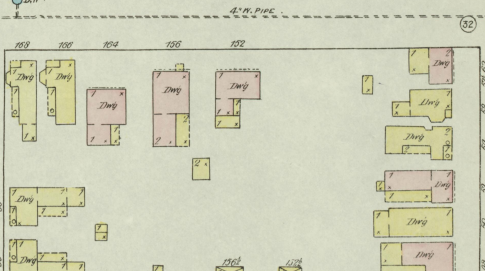
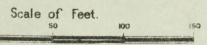
ALLEY 25

W. MAXWELL



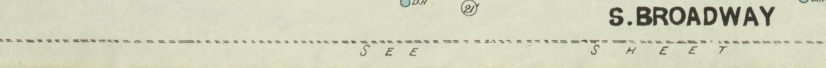
S. SPRING

29

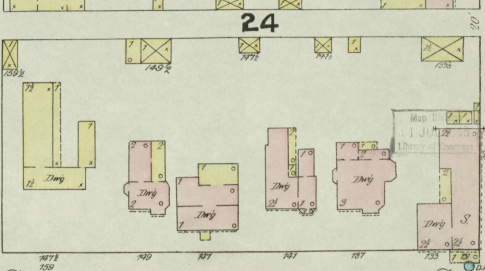


ALLEY 24

S. E. E



S. BROADWAY



ALLEY 23

S. H. E. E. T

S E E S H L E E T No 5

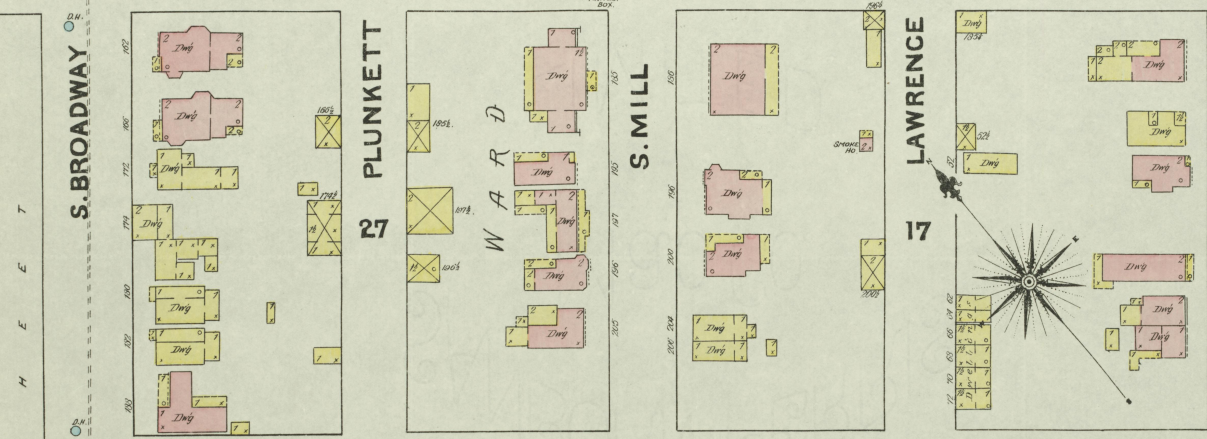
W. MAXWELL E. MAXWELL

Dec. 1890
LEXINGTON
KY.

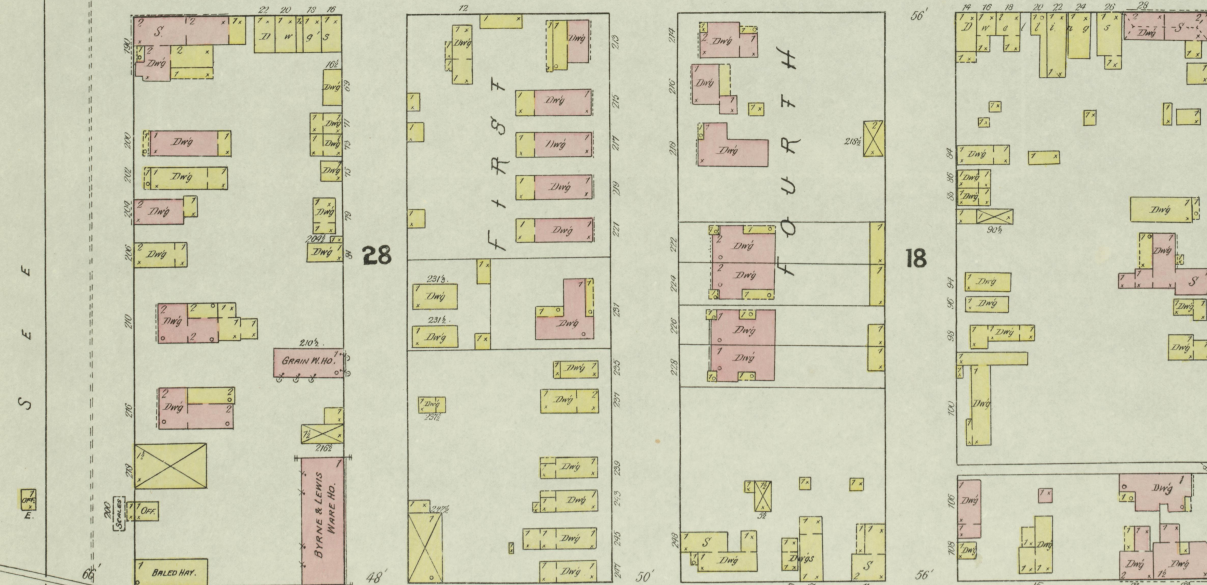
3



W. PINE E. PINE



W. CEDAR E. CEDAR



W. BOLIVAR E. BOLIVAR

S E E S S H E E T No 4

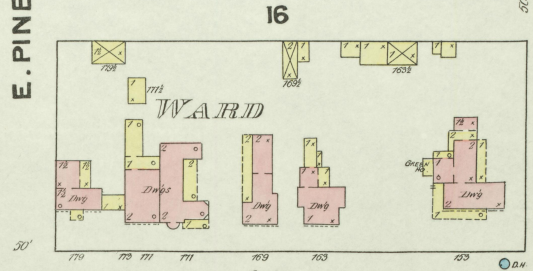
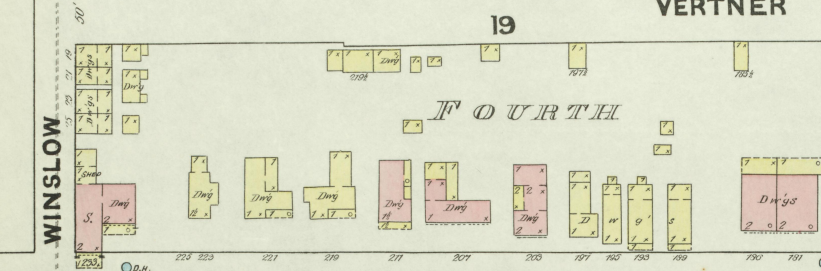
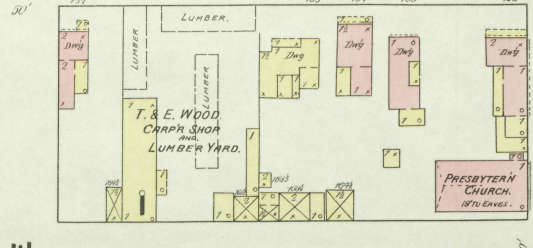
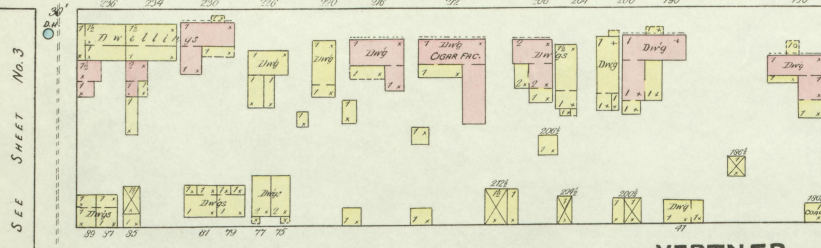
No 4

S H E E T

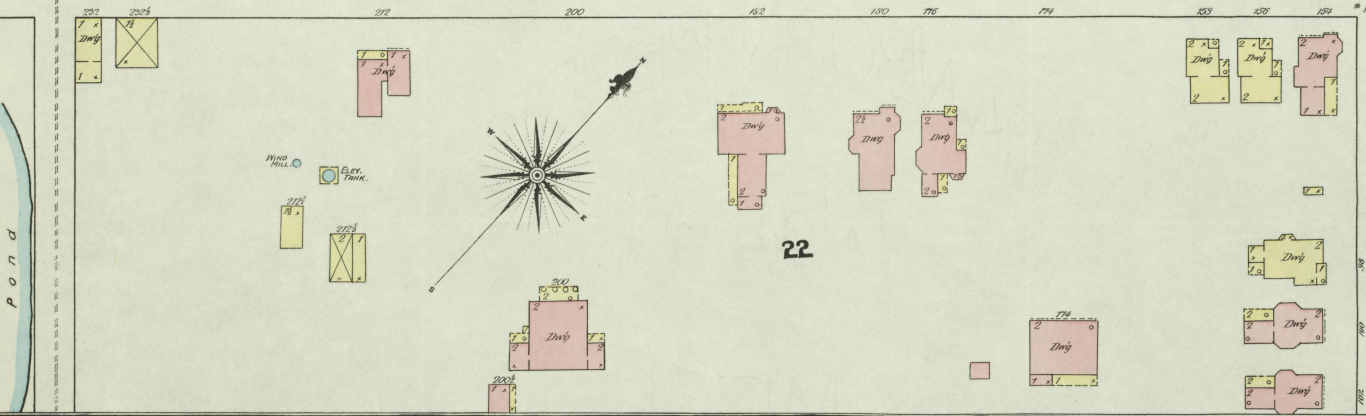
S E E

27

S. UPPER

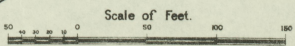
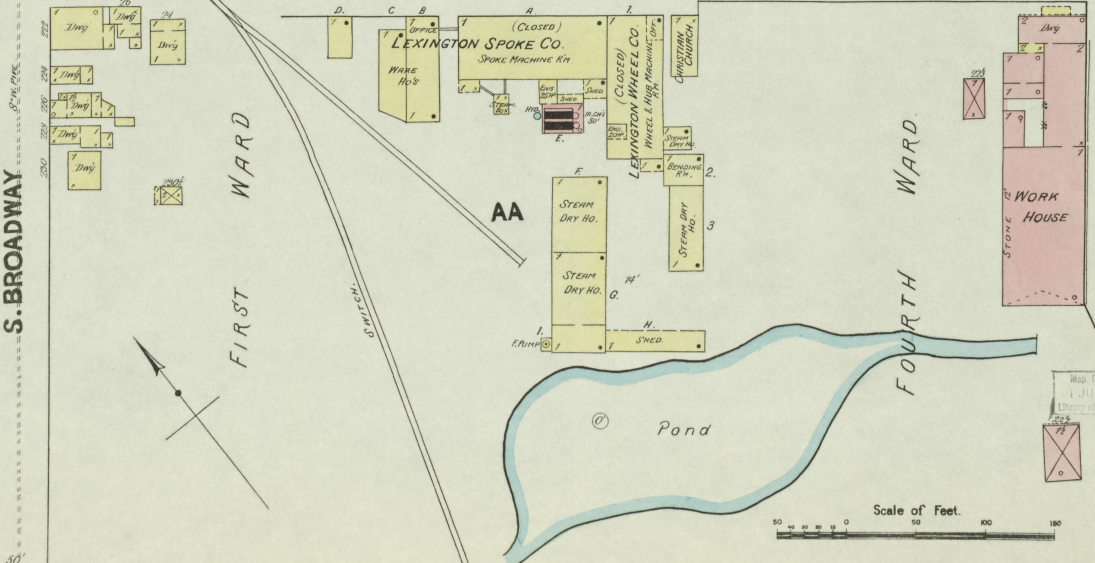
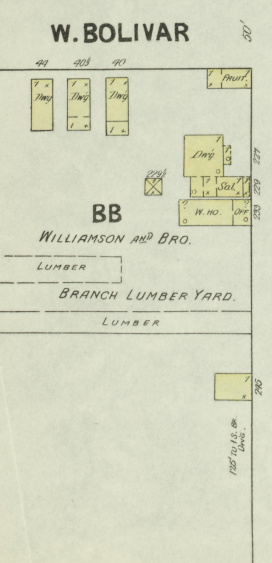


S. MULBERRY OR S. LIMESTONE



SEE SHEET No 2 S E E SHEET No 3

W. BOLIVAR E. BOLIVAR



S. BROADWAY

5

W. MAXWELL

W. HIGH

Dec 1890
LEXINGTON
KY.

F I R S T W A R D 18

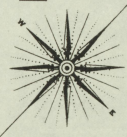
18

S. MILL

E. MAXWELL

E. HIGH

DUDLEY CITY SCHOOL
No. 1.



H E R D O N P L A C E 10

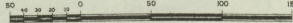
P R I V A T E C O L O R E D
H O S P I T A L

M. E. CHURCH
35 TO EAVES.

S. UPPER

N O. 7

Scale of Feet.



U
R
11

S. MULBERRY OR S. LIMESTONE

S H E E T

50'

50'

MERINO

SEE SHEET No. 15.

6

DEC. 1890
LEXINGTON
KY.

15

VERSAILLES
PIKE

N 2

N 8

21

LOWER

W. MAXWELL

W. HIGH

20

FIRST WARD



S. SPRING

Scale of Feet.

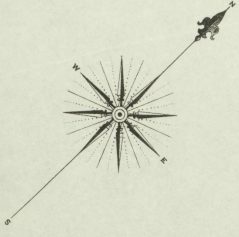
BROWN

19

S. BROADWAY

S H E E T N O . 5





WARD

F R S F

K. C. R. R.

LEXINGTON ICE MFG & STORAGE CO.

STORAGE
ICE HO.
STEAM ENGINE
CONDENSING
PUMPS
STEEL
FRAMES
WATER
WHEELS
ELECTRIC MACHINERY
ELEVATOR

RAIN NIGHT S. DAY - LIGHTS GAS - FUEL OIL -
STORES IN OFFICE - CITY WATER - 240' 1/2' HOSE.

BAPTIST CHURCH
(COLUMBIAN)

NEAT - STONES - FLOOR
LIGHTS - GAS -
WINDOWS ALL AROUND
52' 70' LIVES.

STONE YARD.

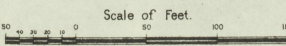
MERINO

GEORGETOWN ST.

JEFFERSON

GEORGETOWN PIKE

BALLARD ST. or GILLS ALLEY



No. 8

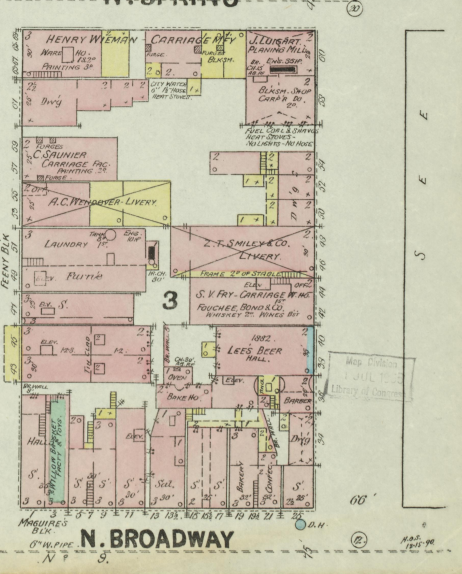
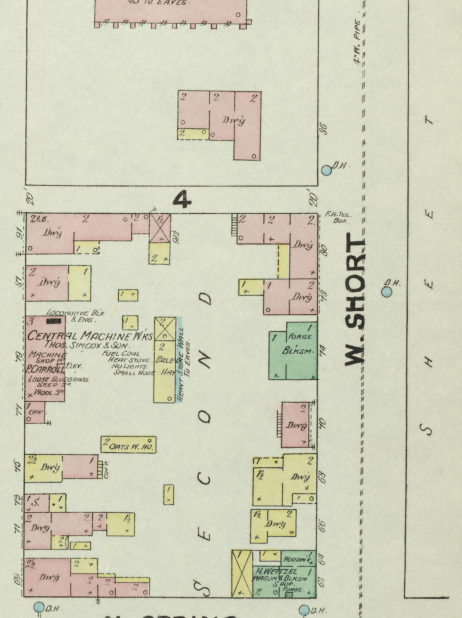
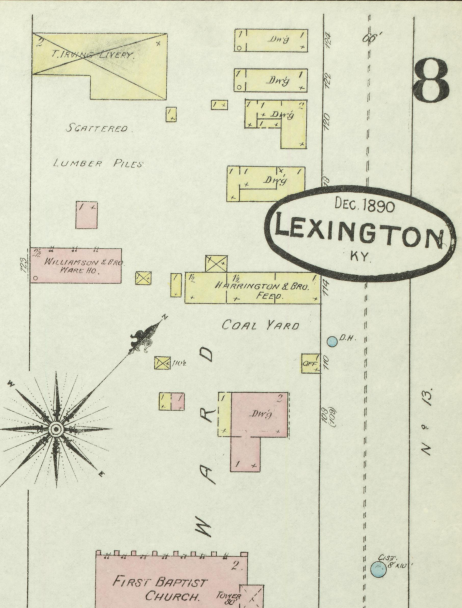
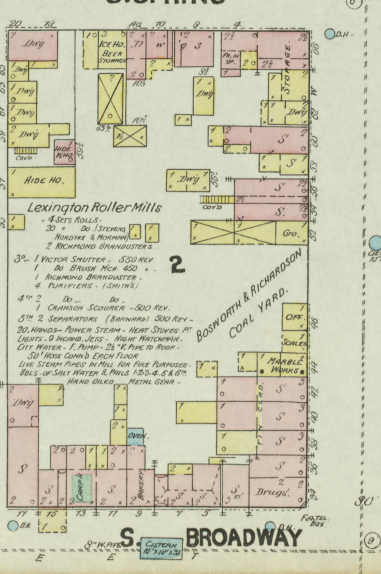
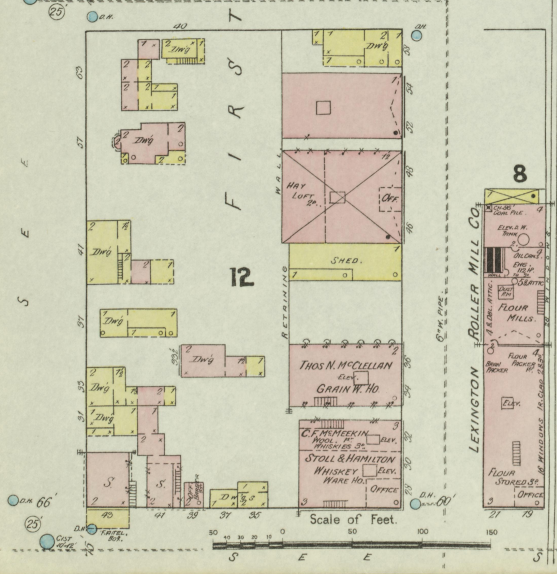
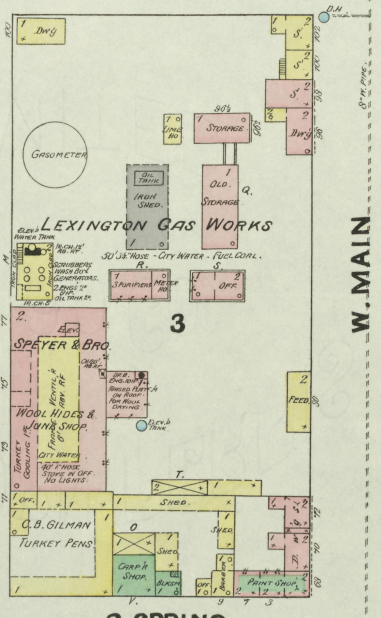
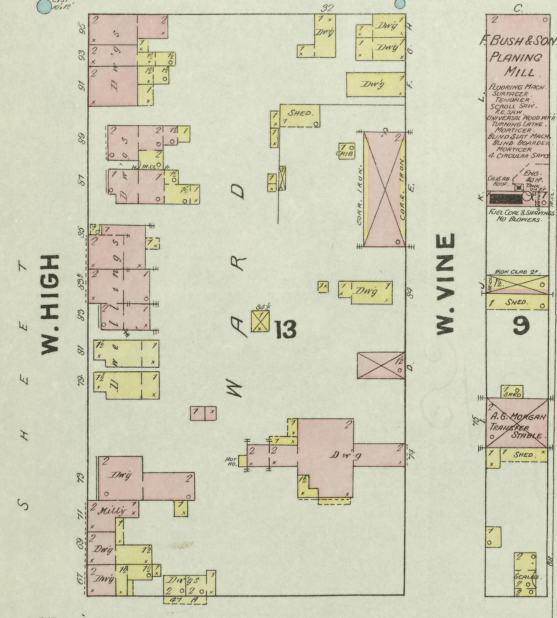
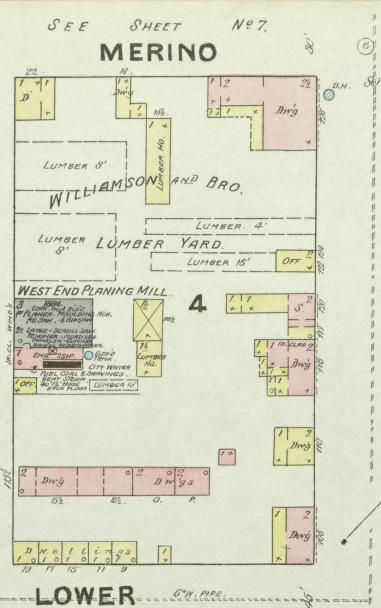
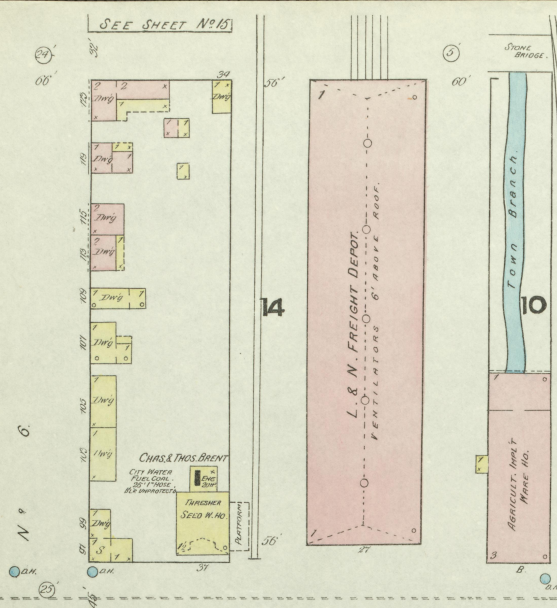
SEE SHEET

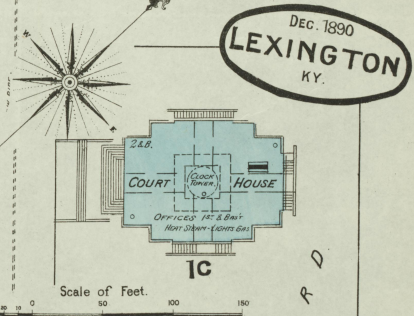
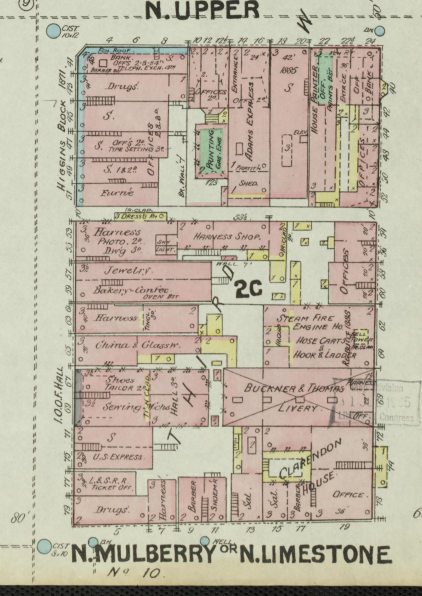
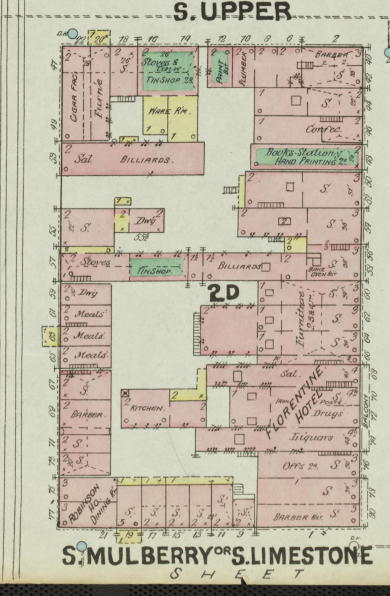
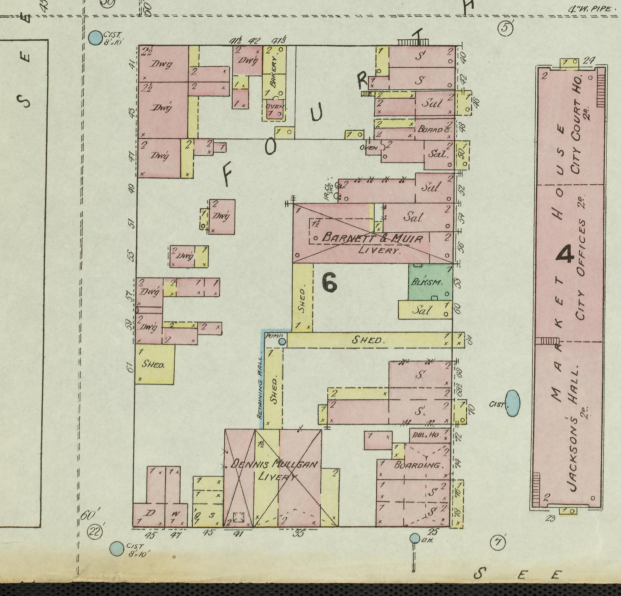
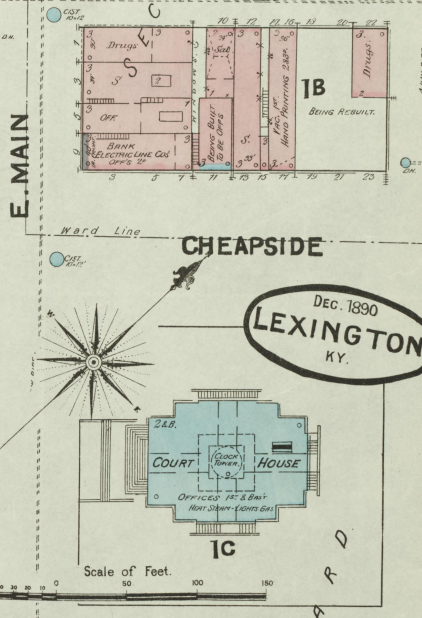
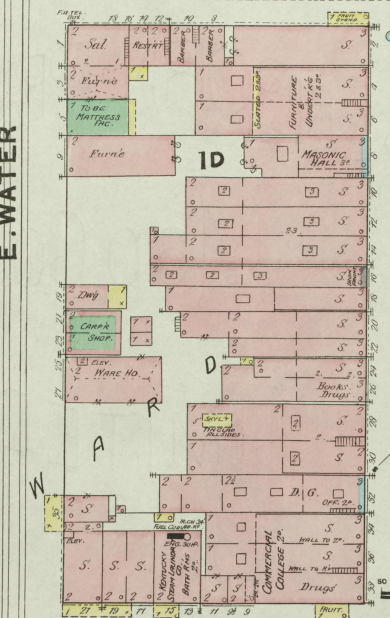
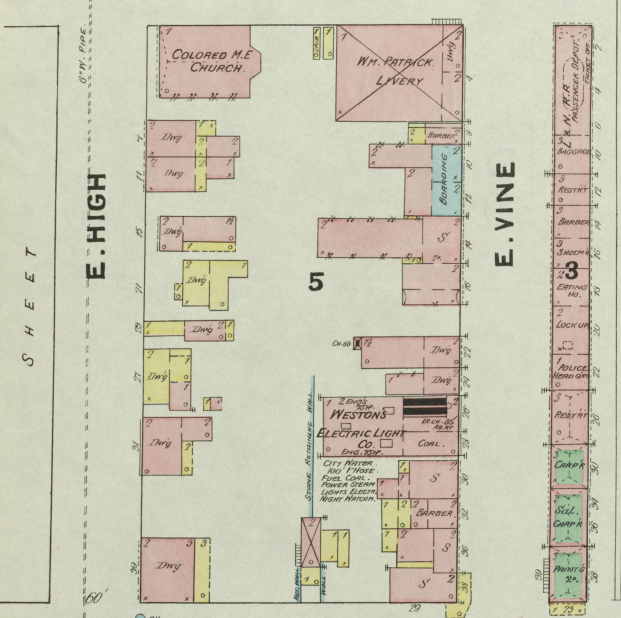
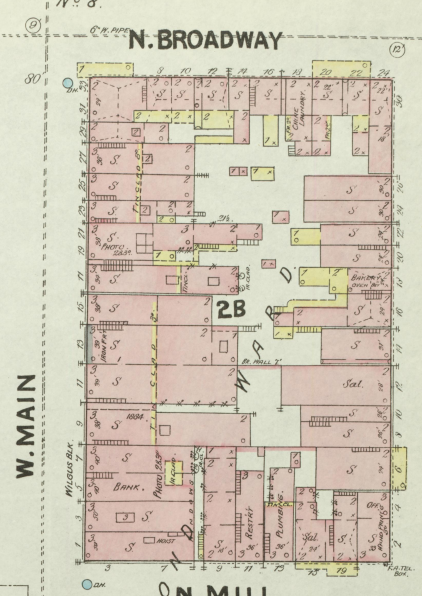
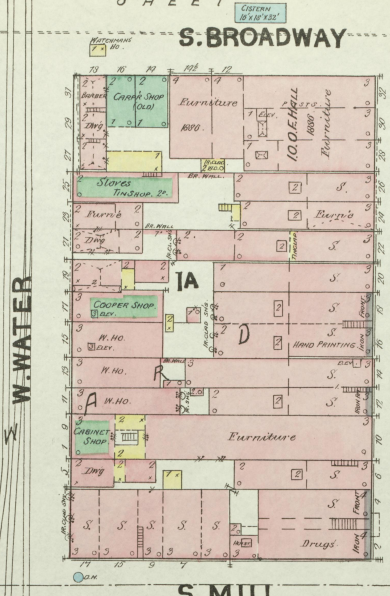
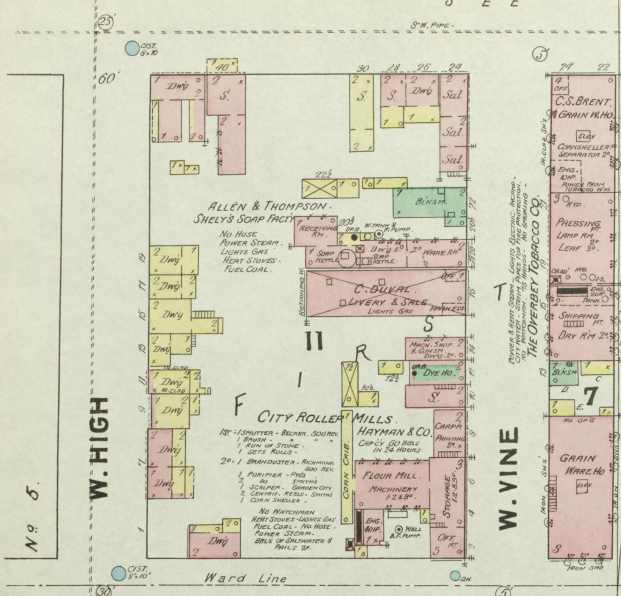
No. 13

SEE SHEET



DEC 1890
LEXINGTON
KY





SEE

SHEET

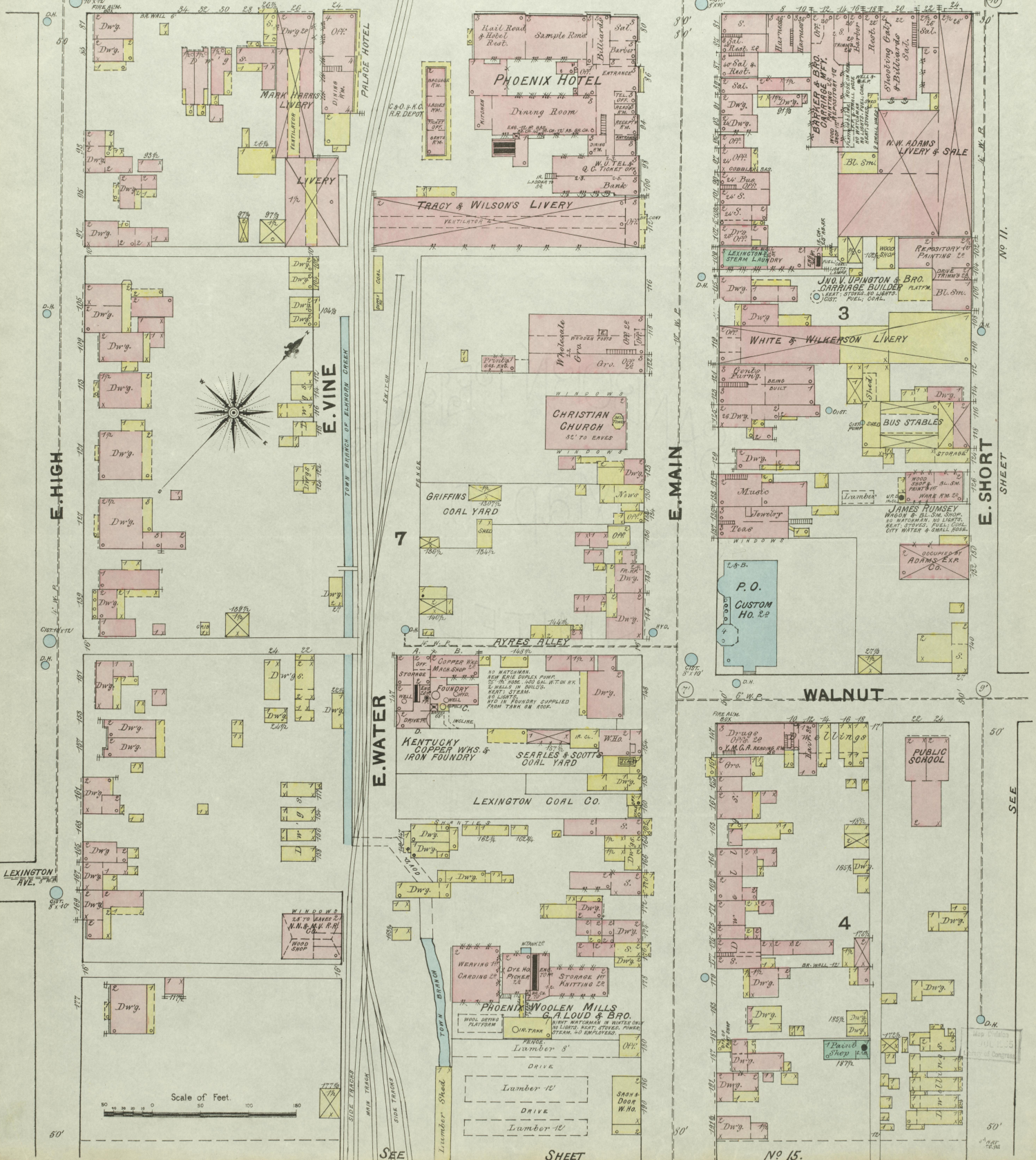
No. 9.

DEC. 1890
LEXINGTON
KY.

10
O.K.

S. MULBERRY OR S. LIMESTONE

N. MULBERRY OR N. LIMESTONE



LEXINGTON AVE.

Scale of Feet

SEE

SHEET

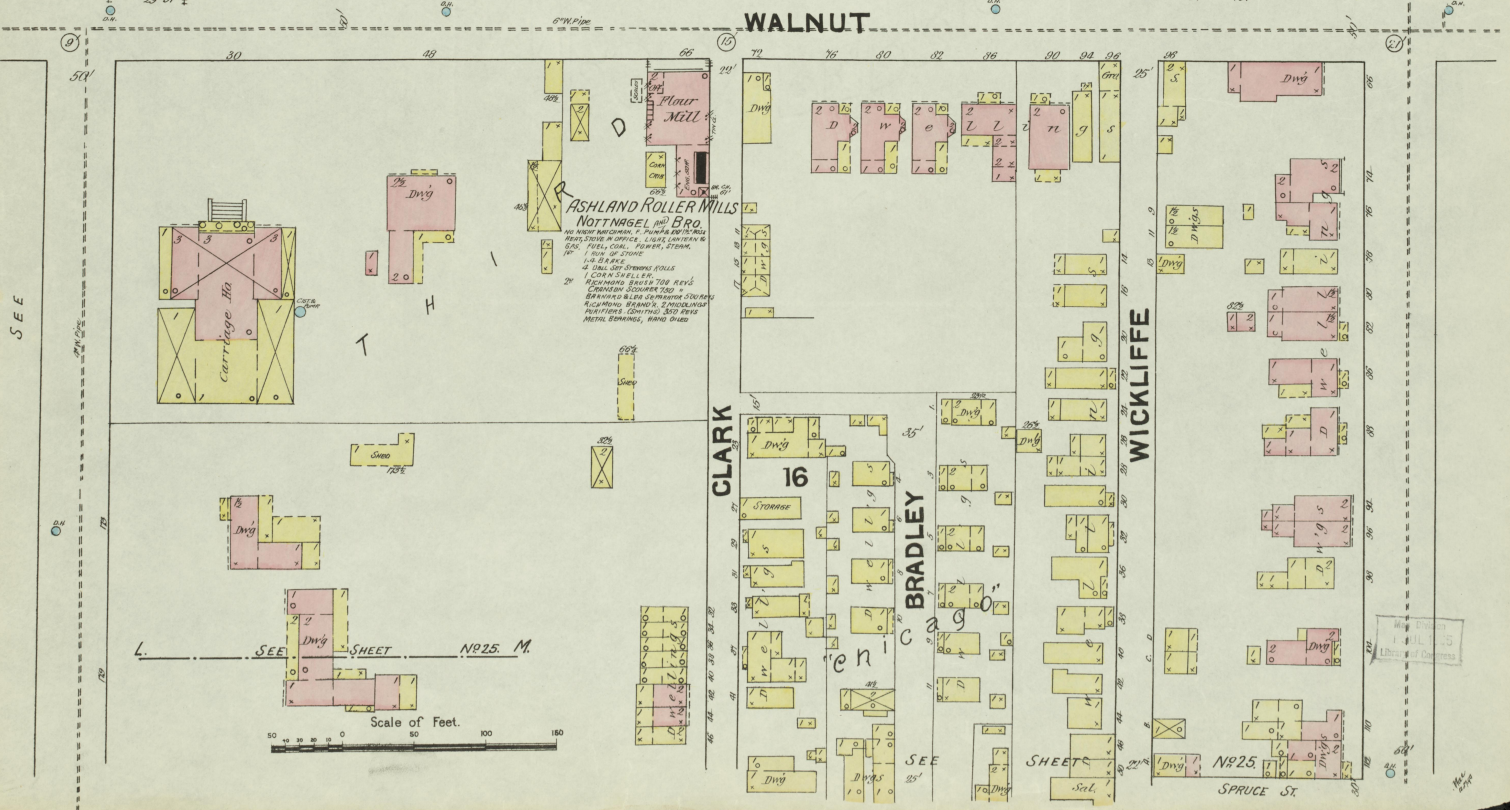
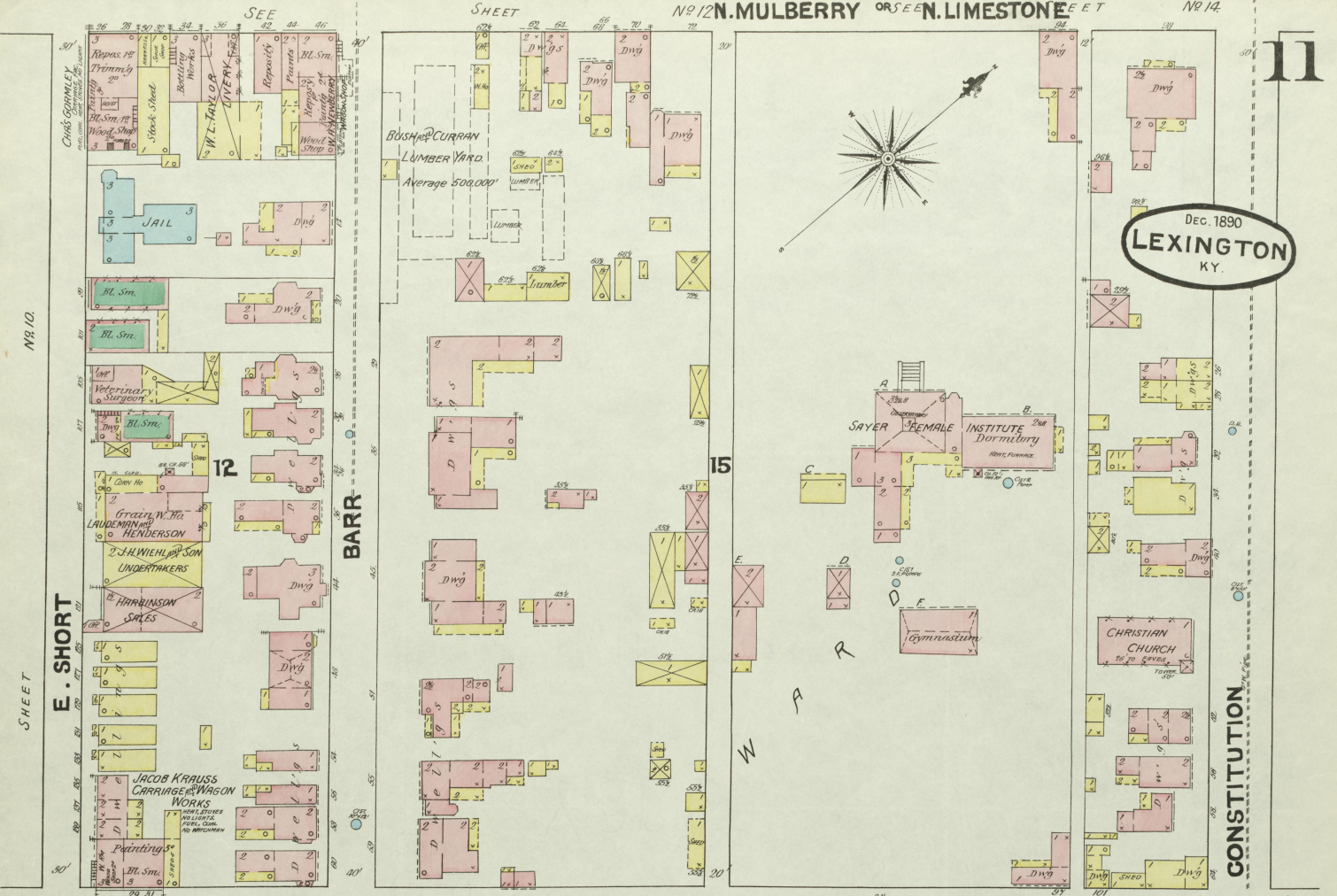
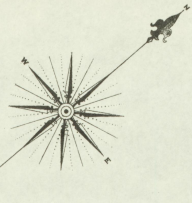
No. 15.

SEE

E. SHORT

No. 11.

Dec. 1890
LEXINGTON
KY.



NR 10

E. SHORT SHEET

12

15

WALNUT

SEE

CLARK

16

BRADLEY

WICKLIFFE

SEE SHEET NR 25 M.

Scale of Feet. 0 50 100 150

NR 25 SPRUCE ST

SEE

SHEET

N^o13

12

N. BROADWAY

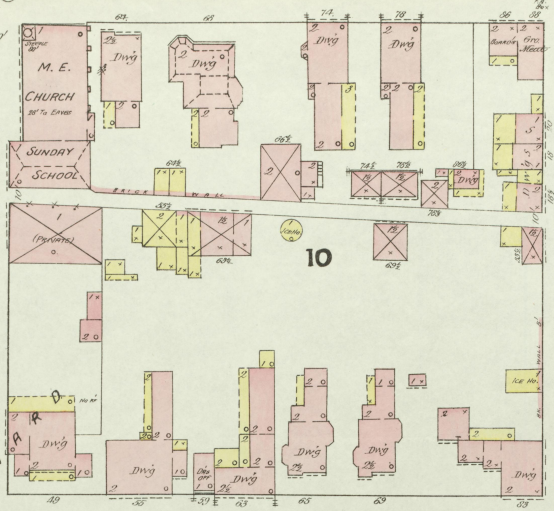
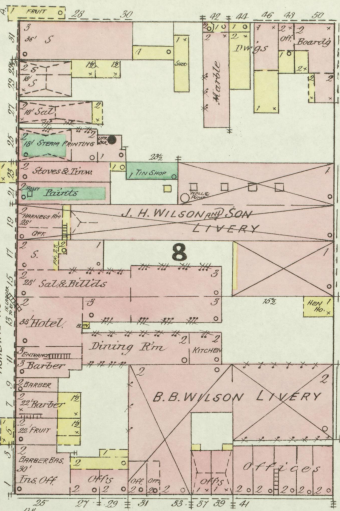
Dec. 1890
LEXINGTON
KY.

W. SHORT

W. CHURCH

W. 2ND ST.

N^o14



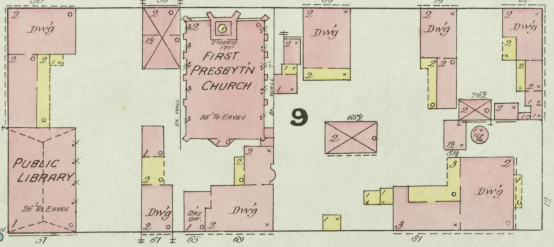
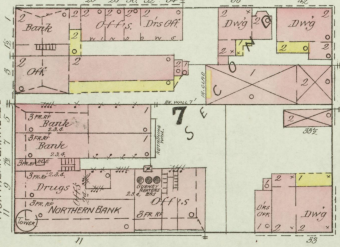
E. SHORT

E. CHURCH

E. 2ND ST.

City Park

SHEET



N. MILL

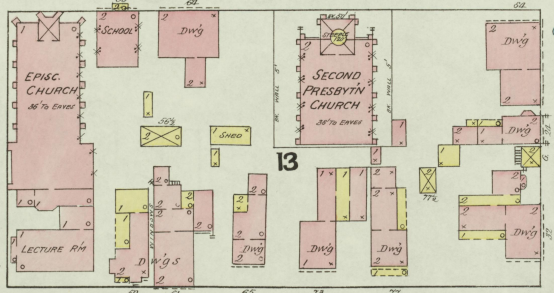
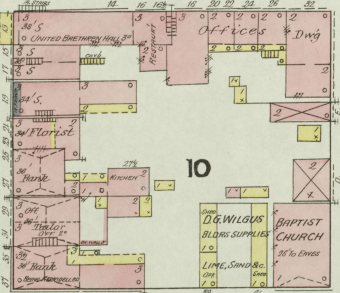
MARKET

SHEET

SHEET

SHEET

SHEET



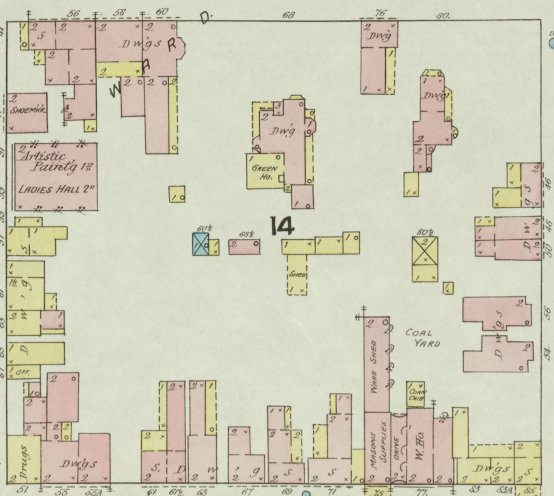
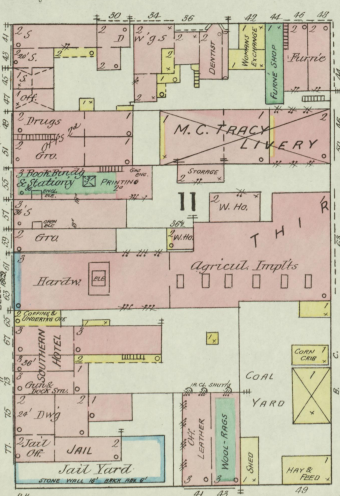
N. UPPER

SEE

SEE

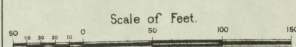
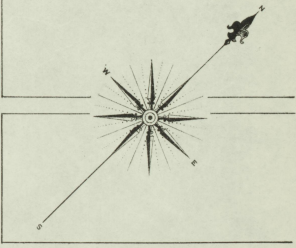
SEE

SEE

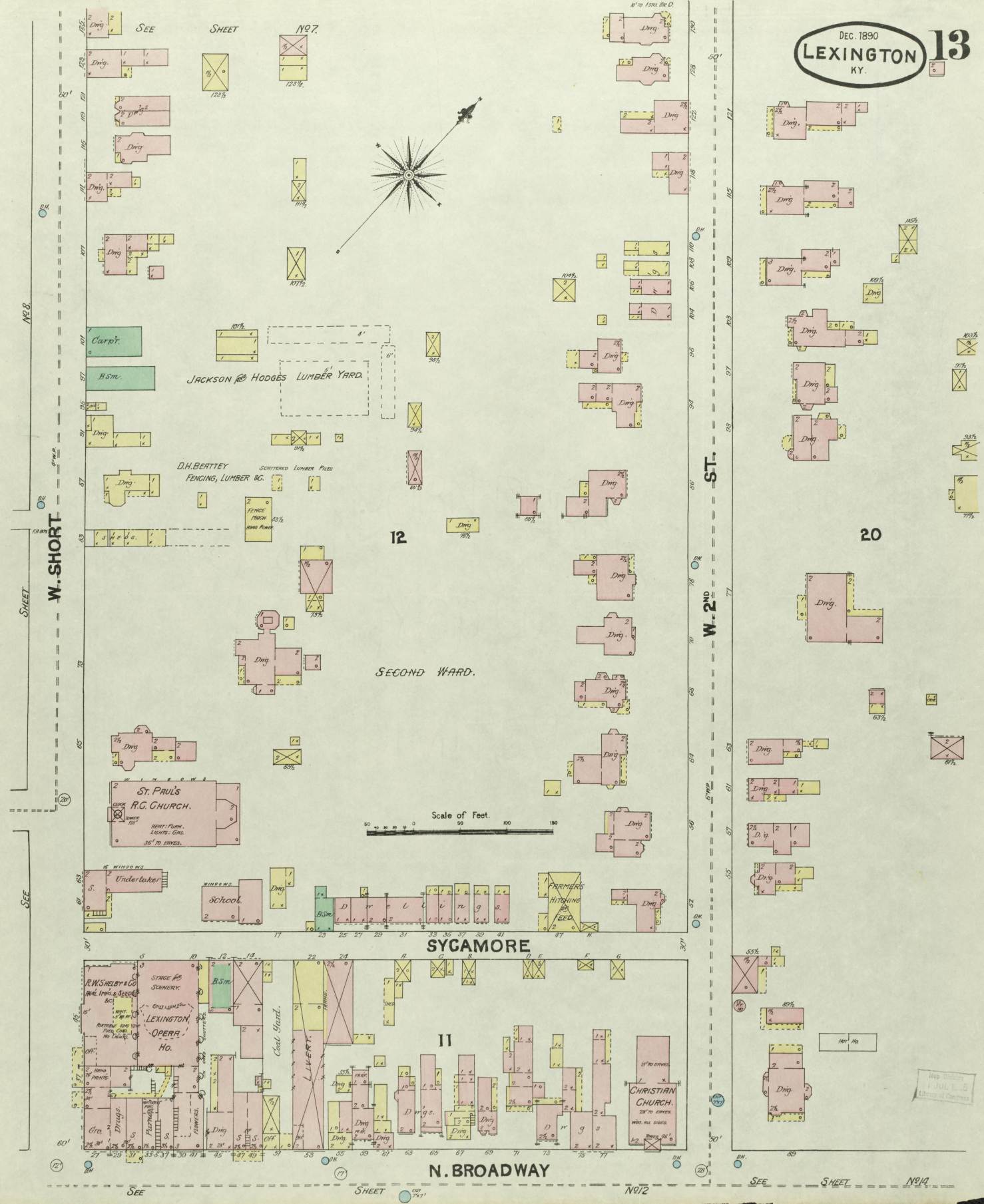


N. MULBERRY SHEET N. LIMESTONE

N^o11



Map Published JULY 1895
Library of Congress



SYCAMORE

11

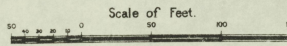
N. BROADWAY

JACKSON & HODGES LUMBER YARD

ST. PAUL'S R.G. CHURCH

CHRISTIAN CHURCH

SECOND WARD



W. SHORT

W-2ND

-ST-

NO. 8

SHEET

SEE

SHEET

NO. 2

SEE

SHEET

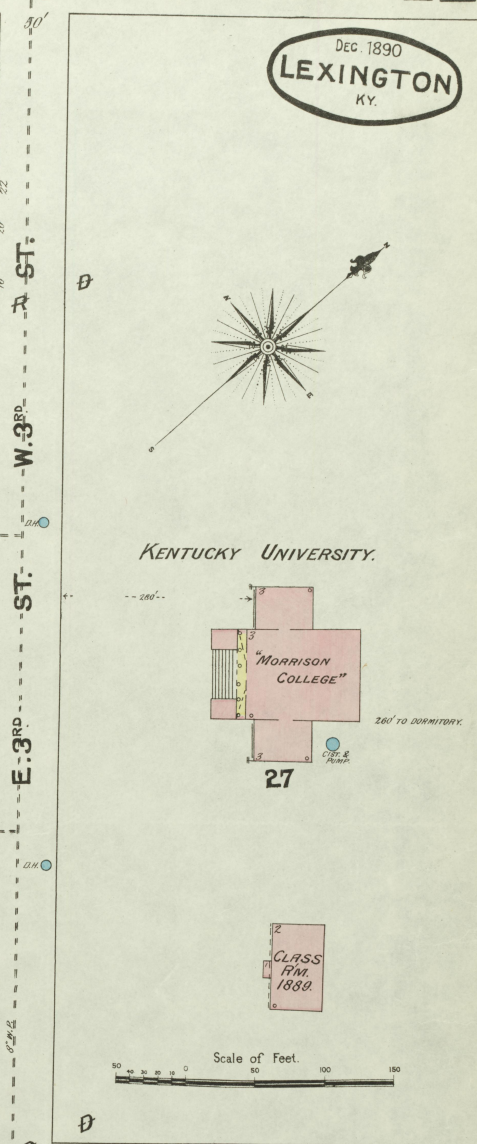
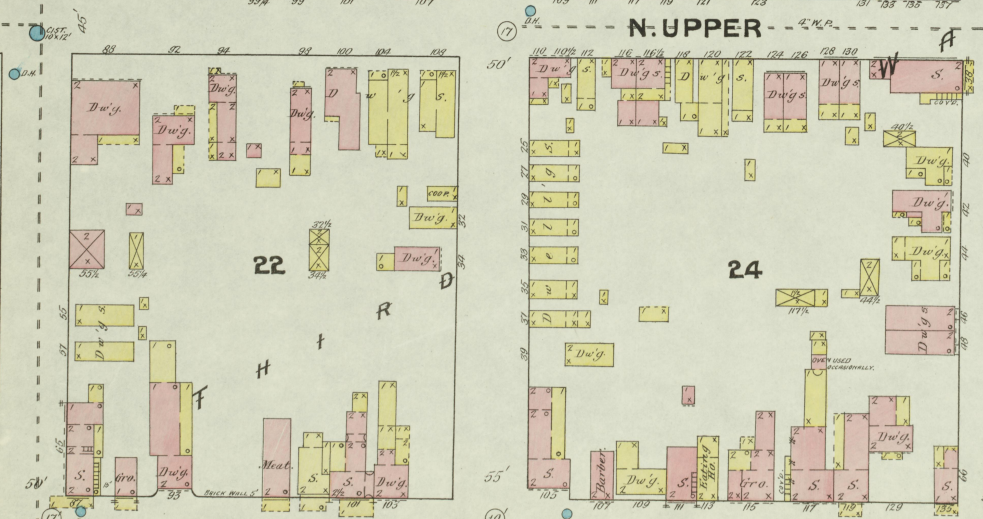
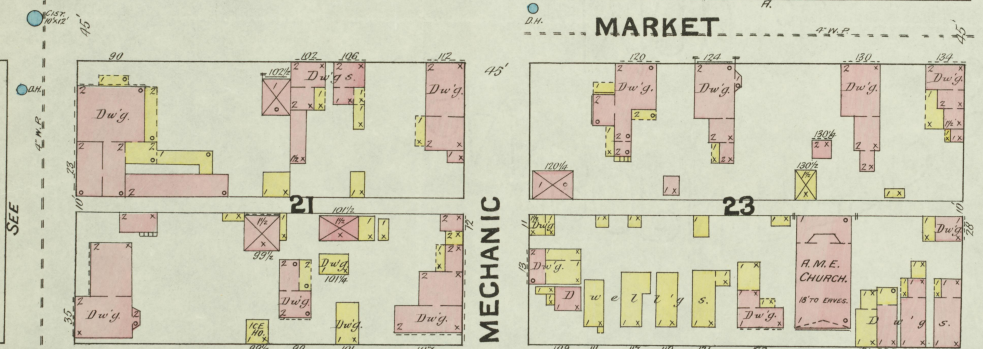
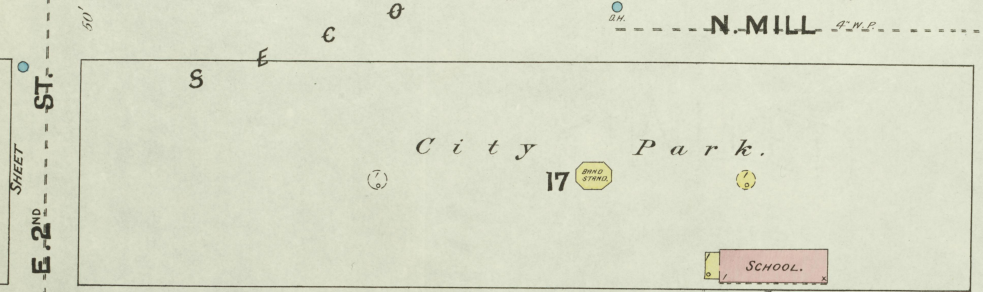
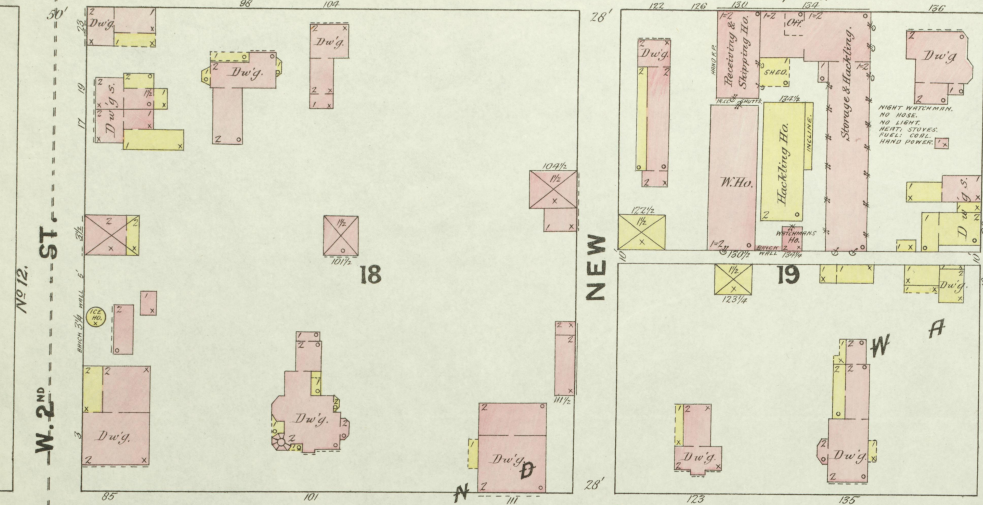
NO. 14

Map London
1 JUL 1895
Library of Congress

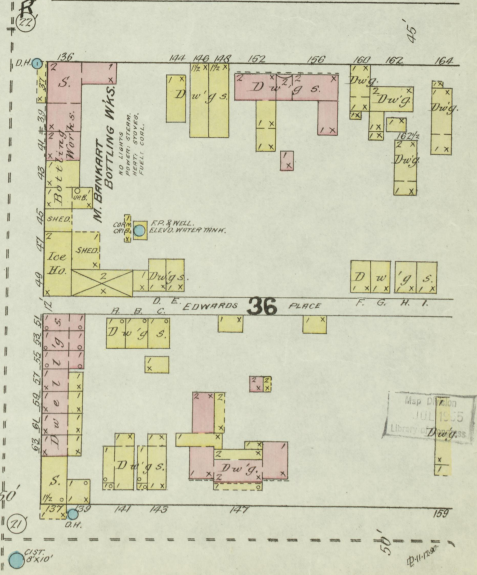
SEE SHEET NO 13.

DEC. 1890
LEXINGTON
KY.

N. BROADWAY
AVERY S. WINSTON
Hemp Rec

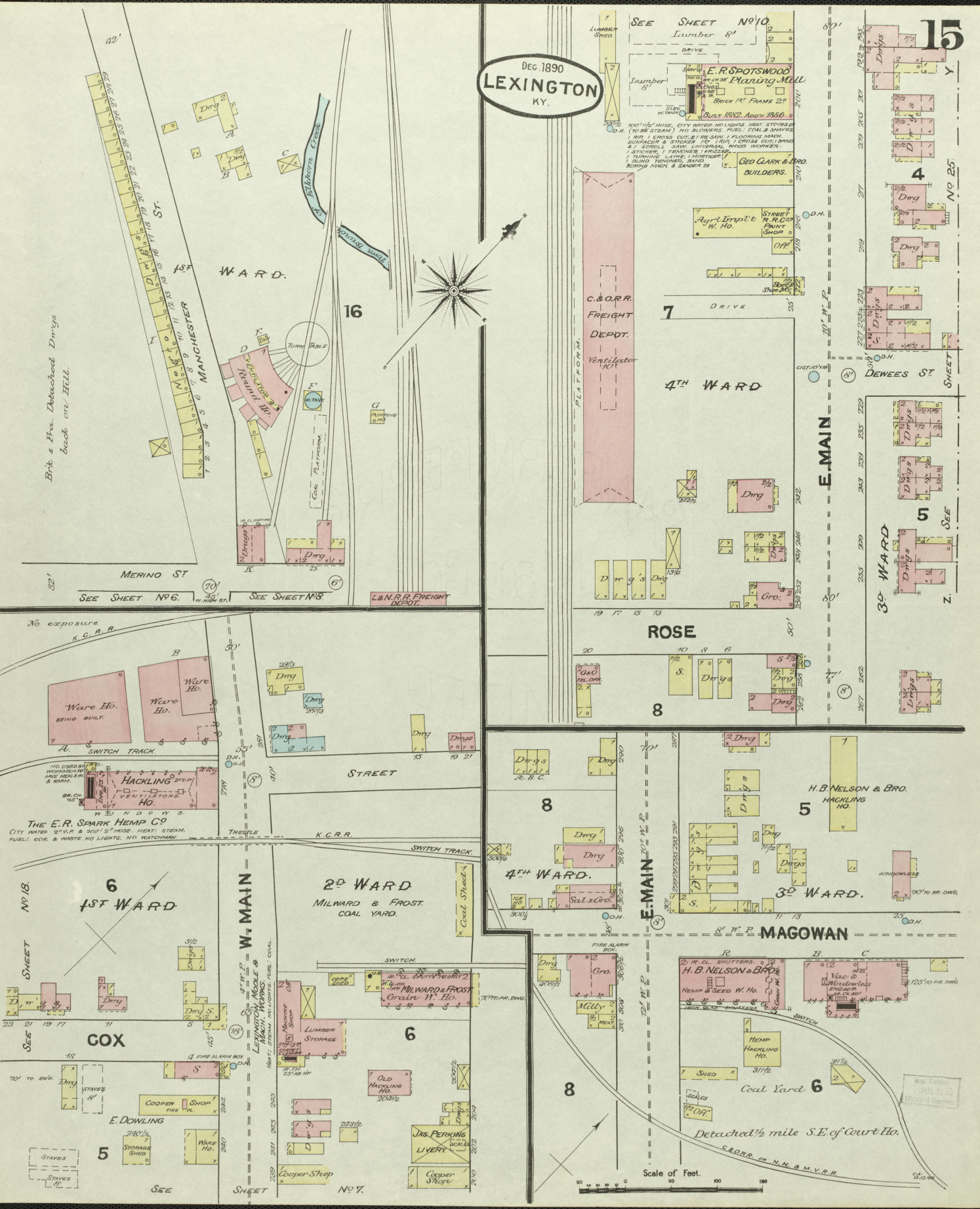


N. MULBERRY OR N. LIMESTONE



DEC. 1890
LEXINGTON
KY.

15



Brick & Iron Detached Dmgs
back on Hill.

SEE SHEET NO 10
Lumber 8'
DRIVE
E. R. SPOTSWOOD
Planing Mill
BRICK 1 1/2" FRAME 22
BUILT 1882 ADDN 1886
200' x 120' HOUSE, CITY WATER, NO LIGHTS, HEAT, STOVES, SHOWER & TOILET, NO BATHROOMS, PAUL, COAL & SPOON
1 RIP, 1 CROSS CUT, 2 1/2' RE SAW, 1 PLOWING MACH.
SUSPENSOR & STOVES 1 1/2" 1 1/2" CROSS CUT, 1 1/2" & 1 1/2" SCROLL SAW, UNIVERSAL WOOD WORKER,
1 STITCHER, 1 TANNER'S PRESS,
1 TURNING LATHE, 1 MORTICAR,
1 BIRD, TENDON, IRON
BORING MACH. & SANDER 28

GEO CLARK & BRO.
BUILDERS.

Agri Grad's
W. Ho.

C. & O.R.R.
FREIGHT
DEPOT.

4TH WARD

ROSE

4TH WARD.

H. B. NELSON & BRO.
HACKLING HO.

9th St
MAGOWAN

SEE SHEET NO 6.

SEE SHEET NO 8

L & N. R.R. FREIGHT
DEPOT.

SEE

No exposure
K.C.B.R.

THE E. R. SPARK HEMP CO
CITY WATER 2 1/2" P. & 300' HOSE. HEAT. STEAM.
FUEL: COX & WASTE. NO LIGHTS, NO WATCHMAN.

1ST WARD

2ND WARD
MILWARD & FROST
COAL YARD.

W. MAIN

COX

E. DOWLING

5

6

OLD HACKLING HO

JAS PERKINS
LIVERY

Cooper Shop

8

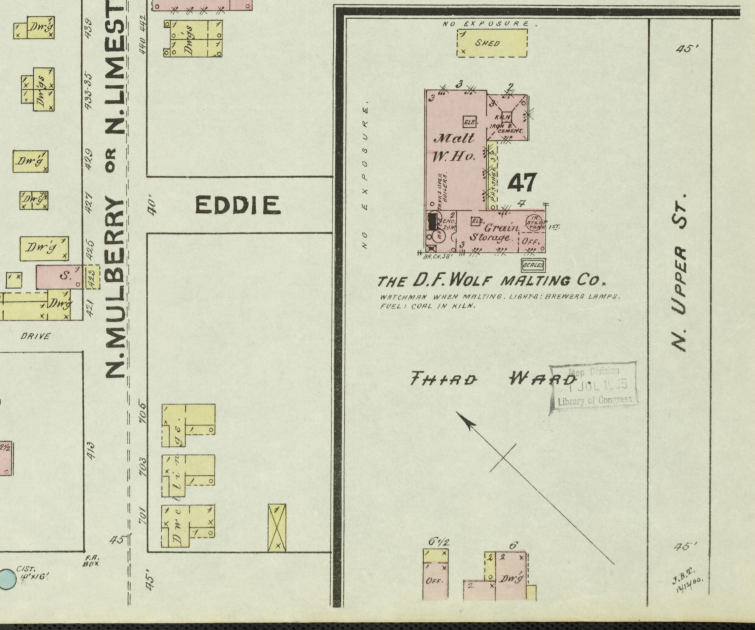
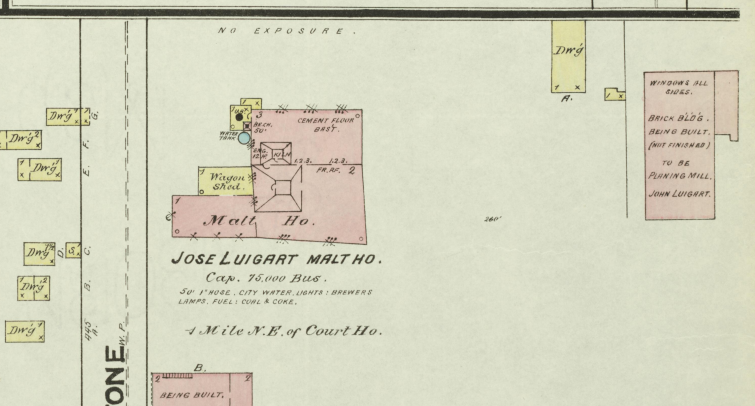
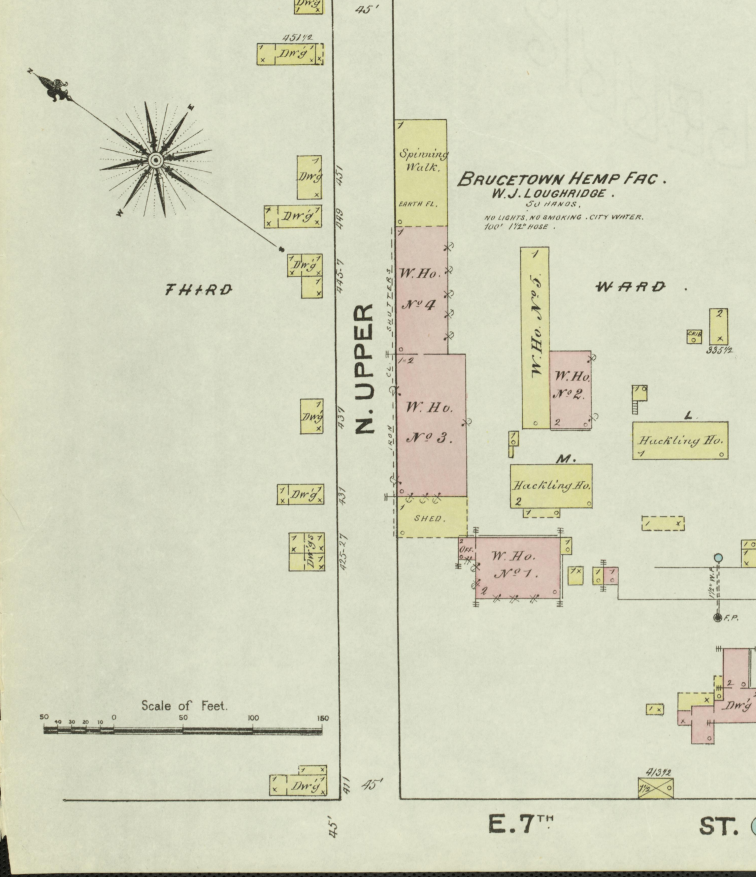
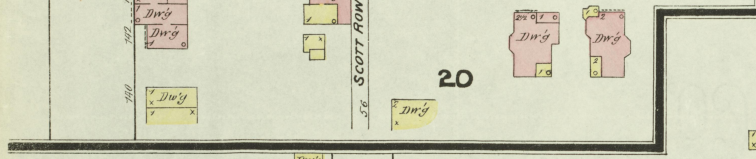
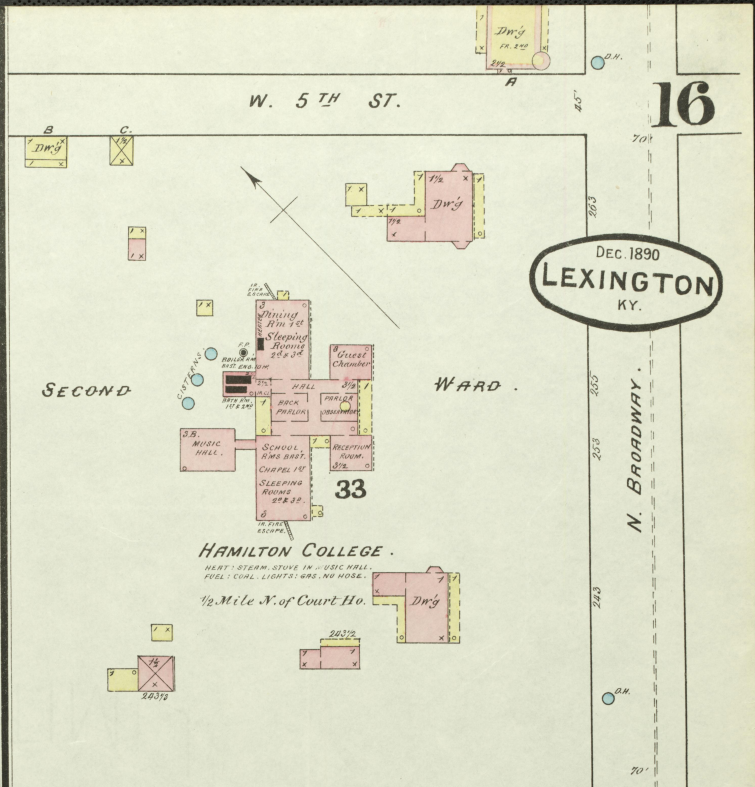
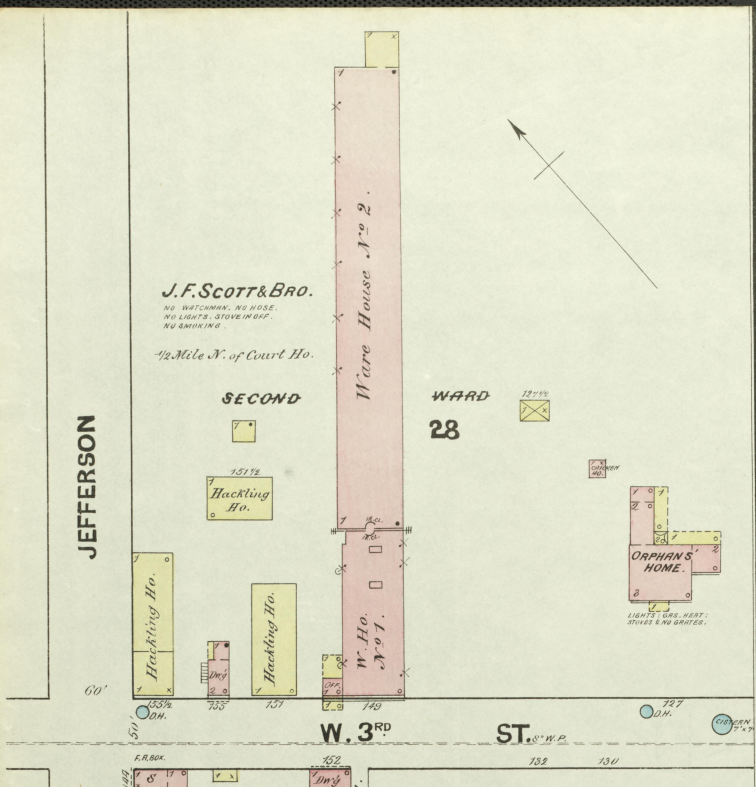
Coal Yard 6

Scale of Feet.

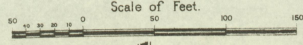
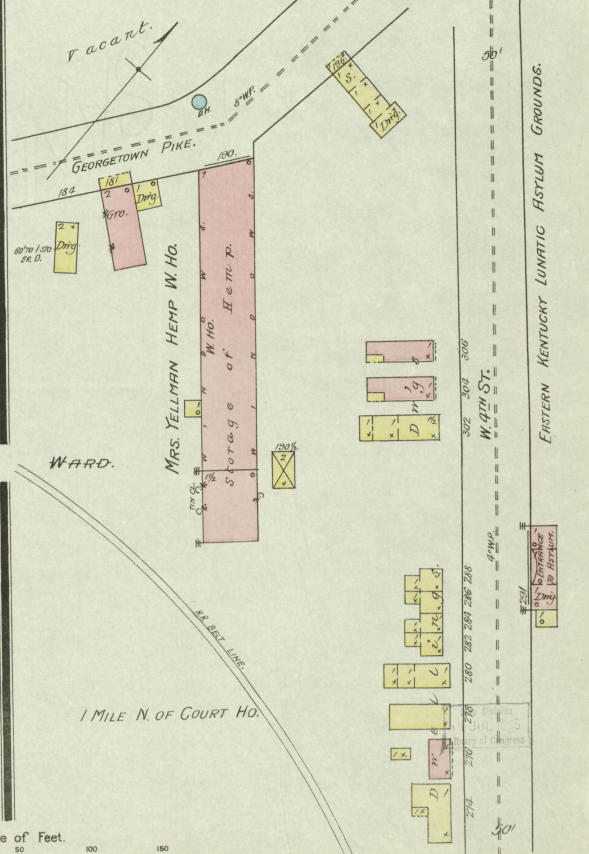
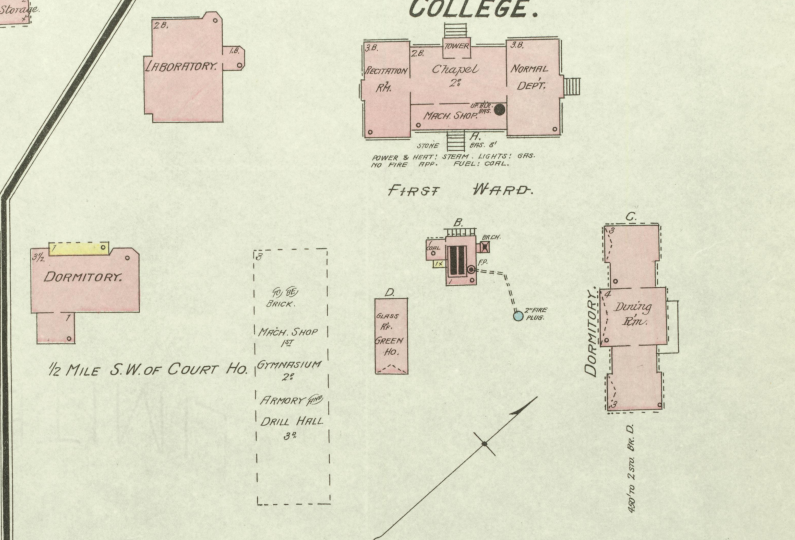
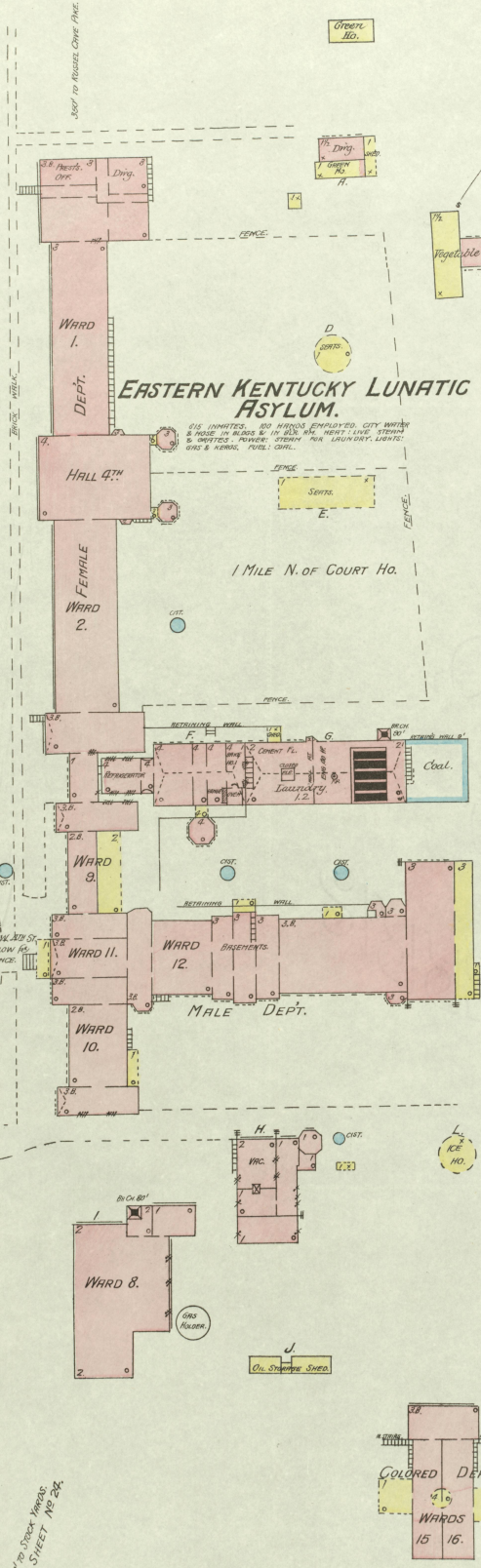
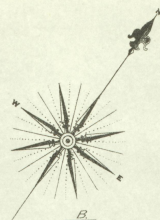
90 100 150

C. & O.R.R. OR N. N. & M.V.R.R.

Map Division
JULY 1888
Library of Congress



KENTUCKY AGRICULTURAL & MECHANICAL COLLEGE.



300' TO HOUSE, CHEF. BLDG.

400' TO MUSEUM ST.

1 MILE N. OF COURT HO.

1/2 MILE S.W. OF COURT HO.

GEORGETOWN PIKE.

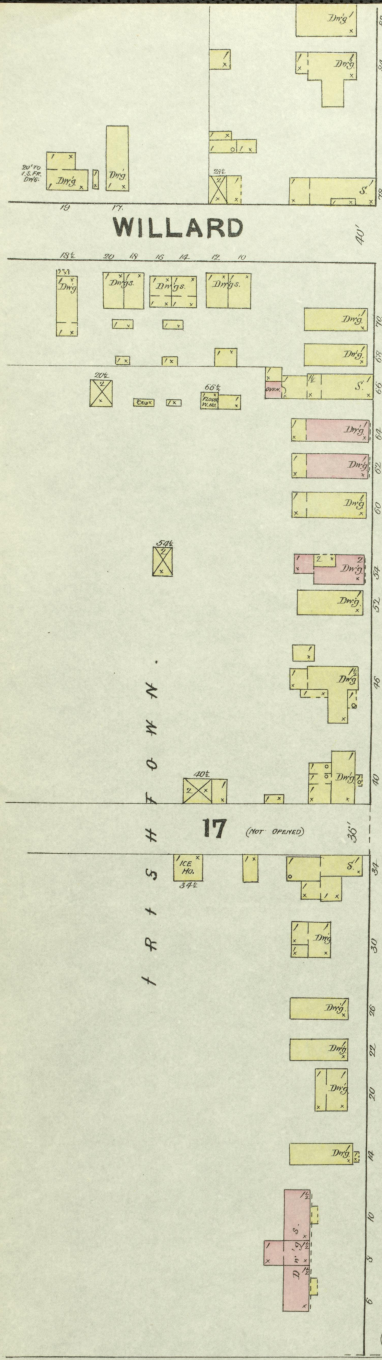
1 MILE N. OF COURT HO.

EASTERN KENTUCKY LUNATIC ASYLUM GROUNDS.

300' TO STOCK YARD, SEE STREET MAP 24.

W. 4TH ST.

DEC. 1890
LEXINGTON
KY.



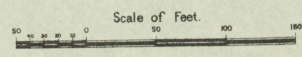
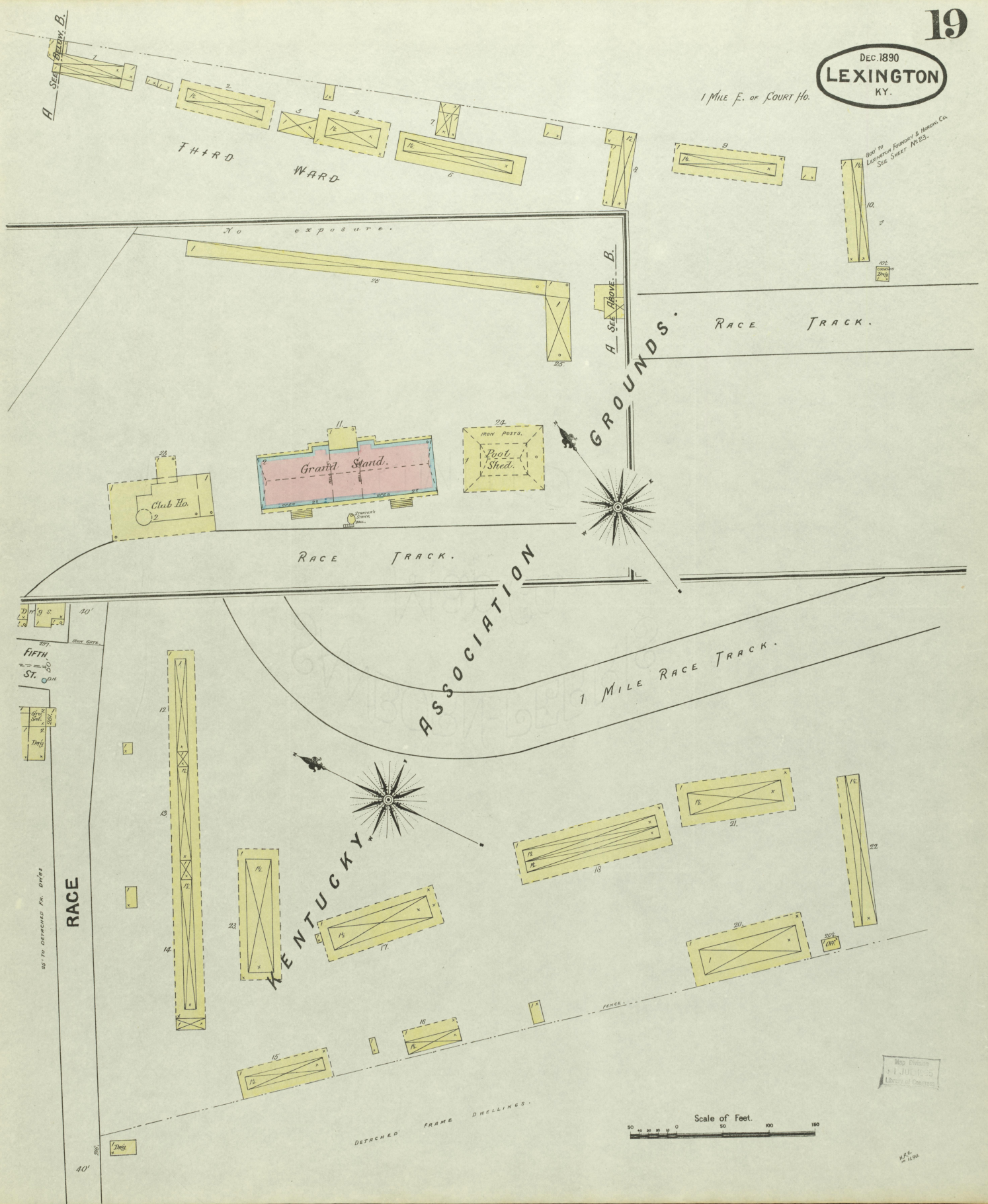
SEE

NOV. 15, 1890.

DEC. 1890
LEXINGTON
KY.

1 Mile E. of COURT Ho.

See To Lexington, Forester & Heaton, Co.
See Sheet No. 23.

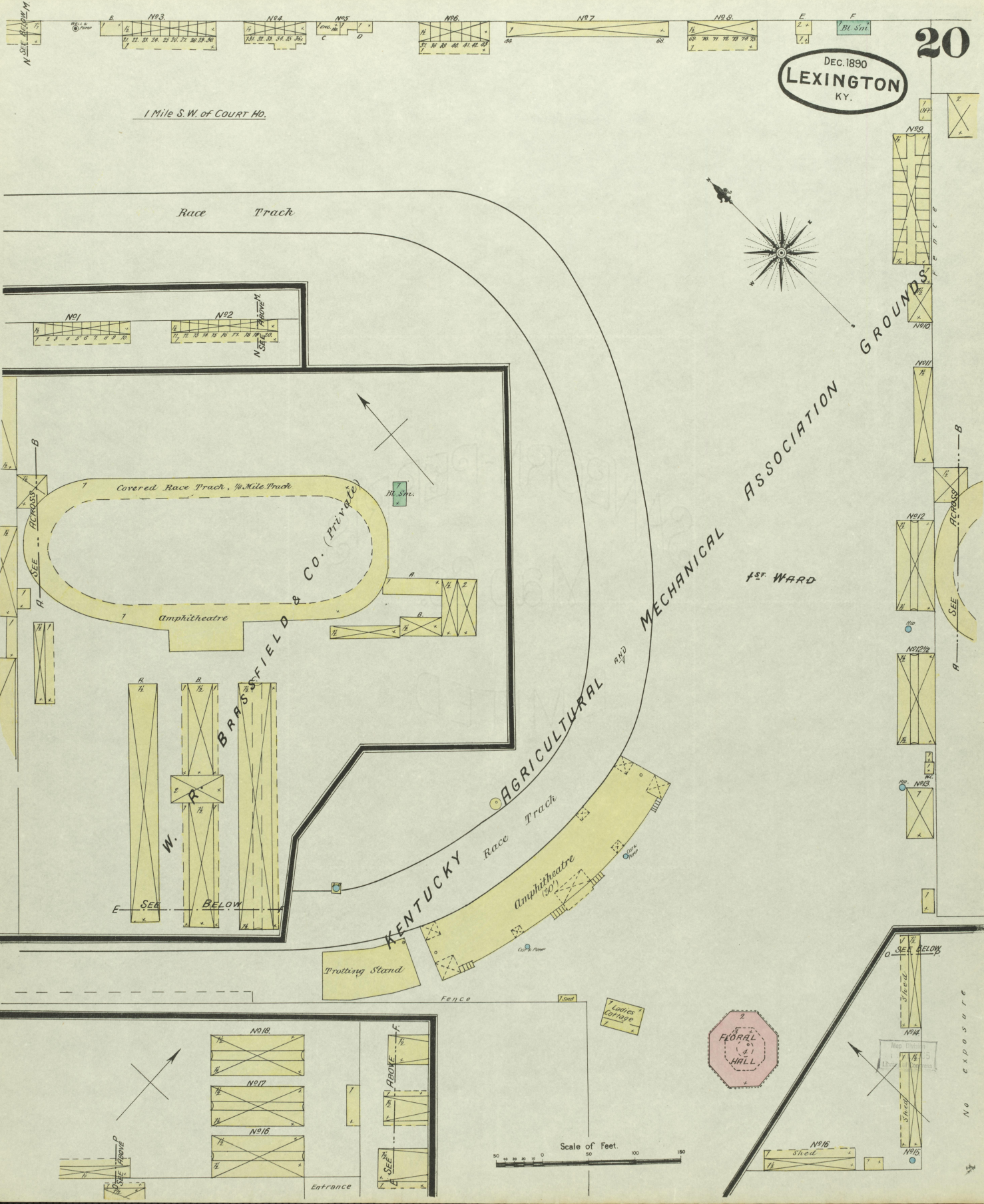


Map drawn
JULY 25
Library of Congress

W.C. 1190

DEC. 1890
LEXINGTON
KY.

1 Mile S.W. of COURT HO.



Race Track

Covered Race Track, 1/4 Mile Track

Amphitheatre

BRADFORD & CO. (Private)

W.

SEE BELOW

KENTUCKY Agricultural Race Tracks

Amphitheatre

Trotting Stand

Fence

Ladies Carriage

FLORAL HALL

Scale of Feet

Stables

SEE BELOW

No exposure

MECHANICAL ASSOCIATION GROUNDS

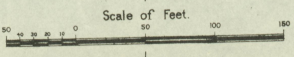
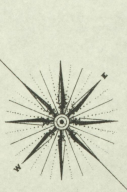
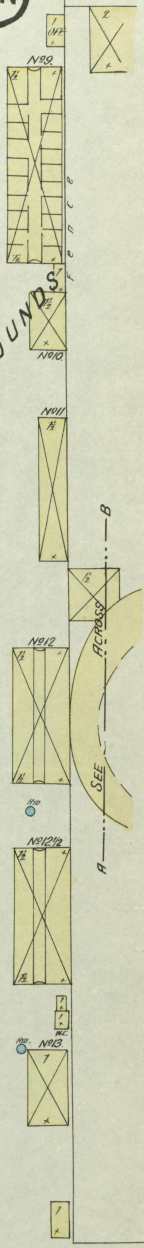
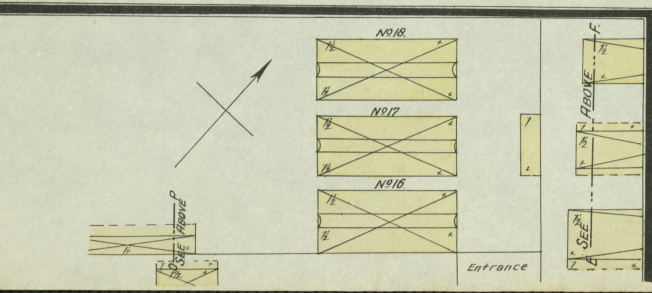
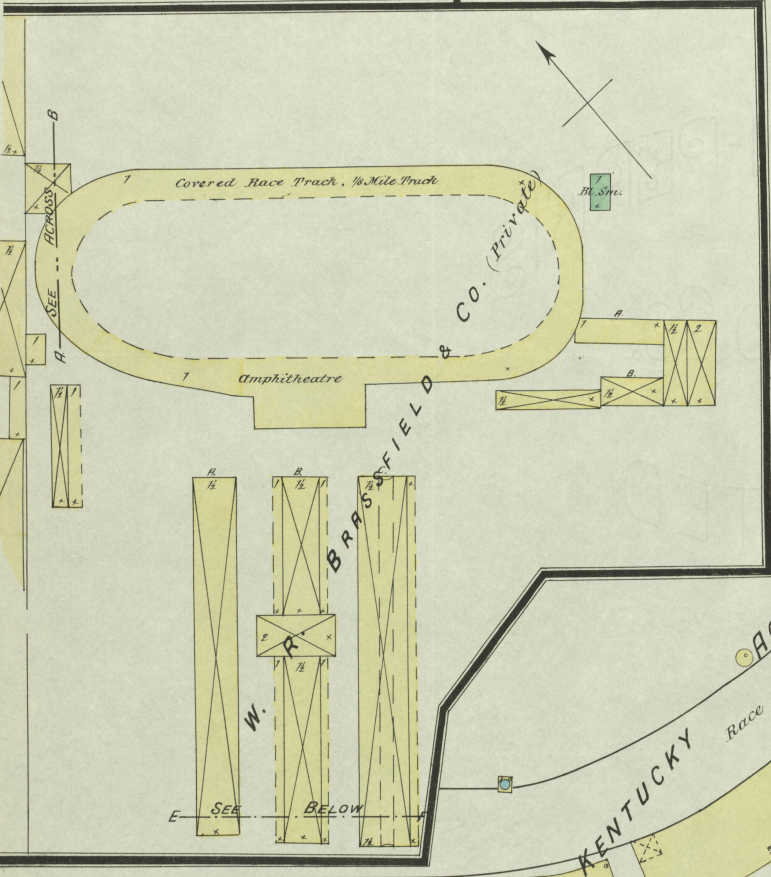
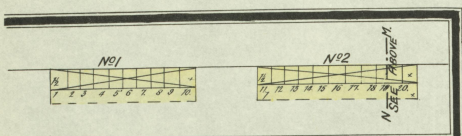
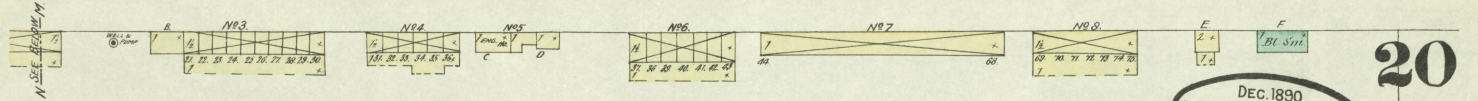
1st WARD

SEE ACROSS

SEE ACROSS

SEE BELOW

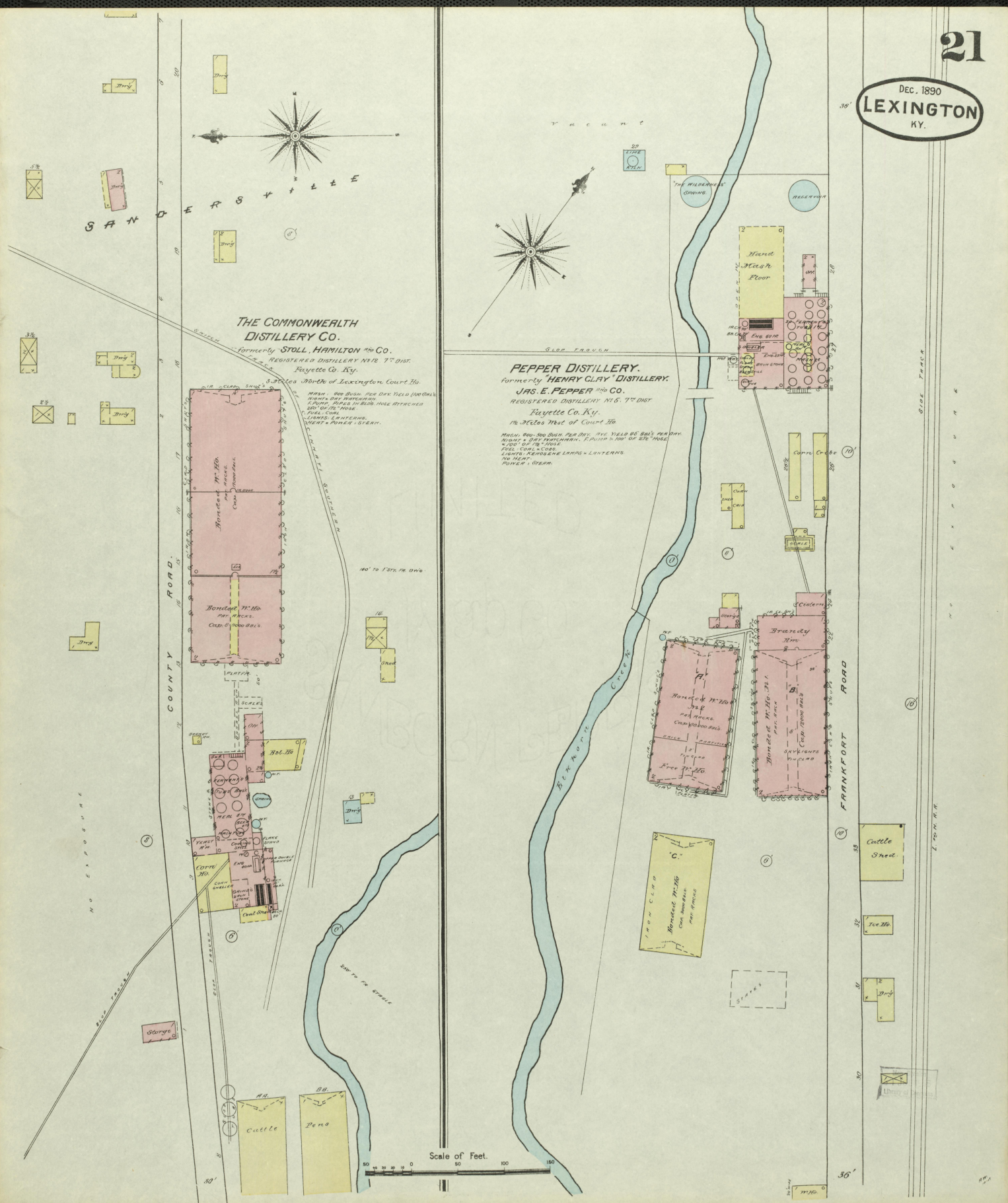
SEE BELOW

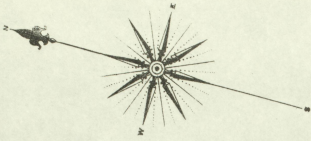


**THE COMMONWEALTH
DISTILLERY CO.**
formerly **STOLL, HAMILTON & CO.**
REGISTERED DISTILLERY NO. 7th DIST.
Boyetette Co. Ky.

PEPPER DISTILLERY.
formerly **HENRY CLAY DISTILLERY.**
JAS. E. PEPPER & CO.
REGISTERED DISTILLERY NO. 5, 7th DIST.
Boyetette Co. Ky.

MASH, 400 BUSH. PER DAY. YIELD 1000 GALS.
MASH, 100 BUSH. PER DAY. YIELD 500 GALS.
MASH, 100 BUSH. PER DAY. YIELD 500 GALS.
MASH, 100 BUSH. PER DAY. YIELD 500 GALS.
MASH, 100 BUSH. PER DAY. YIELD 500 GALS.
MASH, 100 BUSH. PER DAY. YIELD 500 GALS.
MASH, 100 BUSH. PER DAY. YIELD 500 GALS.
MASH, 100 BUSH. PER DAY. YIELD 500 GALS.
MASH, 100 BUSH. PER DAY. YIELD 500 GALS.
MASH, 100 BUSH. PER DAY. YIELD 500 GALS.
MASH, 100 BUSH. PER DAY. YIELD 500 GALS.





Hill Side

E.J. CURLEY & CO.
BLUE GRASS DISTILLERY.
REGISTERED DISTILLERY.
1893, 8TH DIST.
JESSEMIINE CO. KENTUCKY
NEAR 3 UNITS OF 2000 BARRELS FIELD TO 2000
MILES PER HOUR IN WIND. F.P. & 2000 W.S.
WINDY WATCHMAN RUN ONLY IN WIND. F.P. & 2000 W.S.
MILES PER HOUR IN WIND. F.P. & 2000 W.S.
MILES PER HOUR IN WIND. F.P. & 2000 W.S.
MILES PER HOUR IN WIND. F.P. & 2000 W.S.
20 MILES S. OF LEXINGTON KY.
"BOONES KNOB"

HEADLEY & PECK.
WOODLAND DISTILLERY.
REG. DISTILLERY. 1894 7TH DIST.
FRYETTE CO. KY.
FULL PROCESS. CAP. 1000 BAR. 2000 BOTT.
MIDLAND 17 1/2 BARS PER DAY. REG. PAT.
1 1/2 HOURS. NIGHT WATCHMAN. F.P. & 2000 W.S.
20 MILES S. OF LEXINGTON KY.

E.J. CURLEY & CO. COOPER SHOPS & BARS. W. HO.
COOPER SHOPS & BARS. W. HO.
COOPER SHOPS & BARS. W. HO.
COOPER SHOPS & BARS. W. HO.
COOPER SHOPS & BARS. W. HO.
COOPER SHOPS & BARS. W. HO.

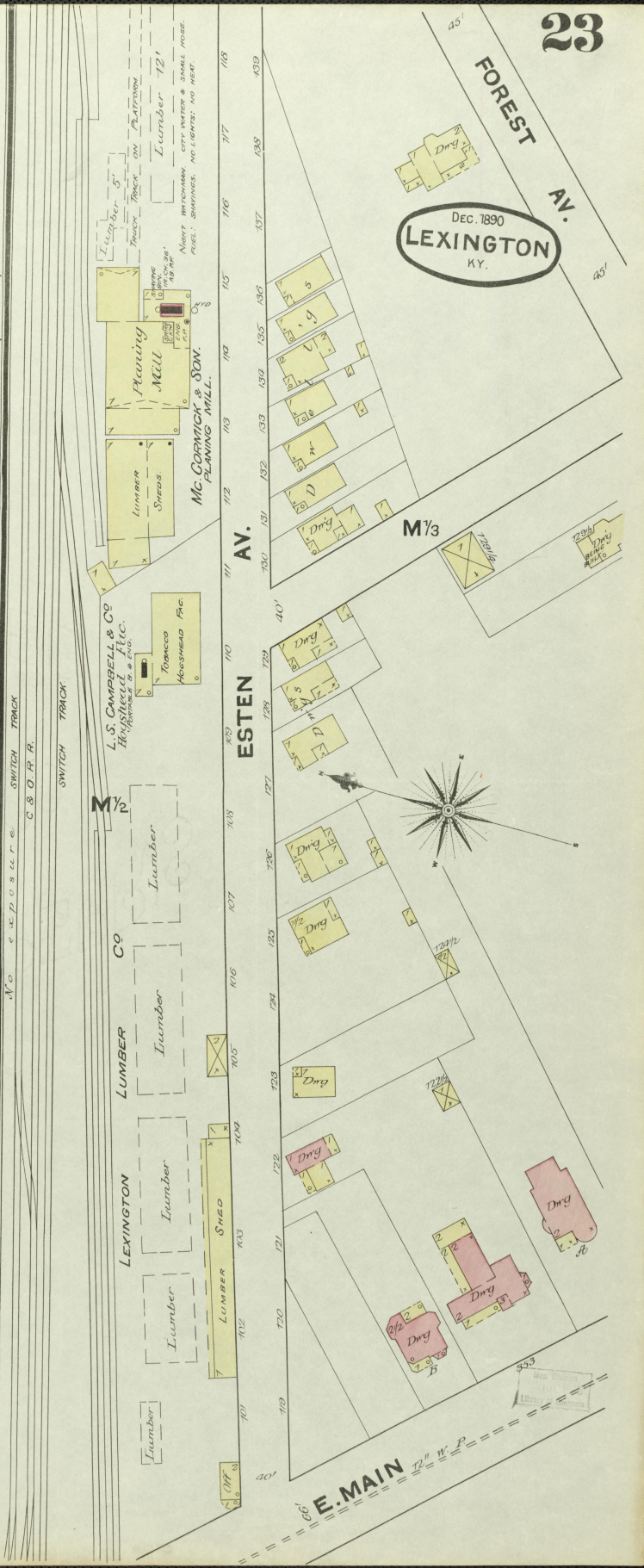
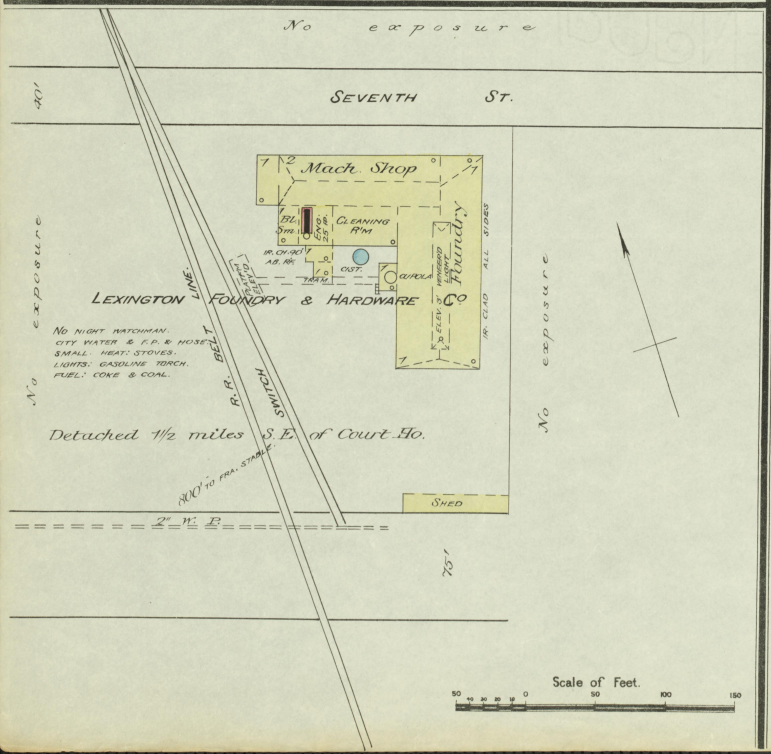
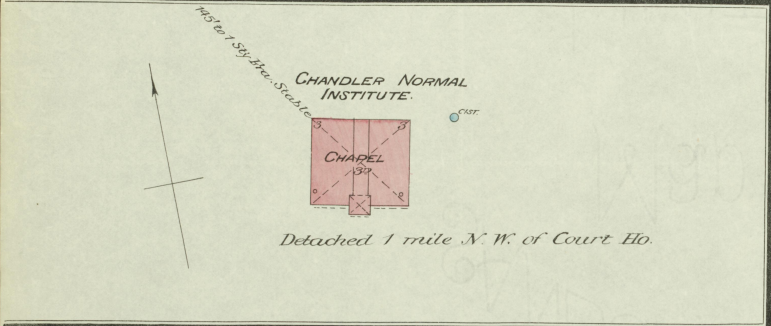
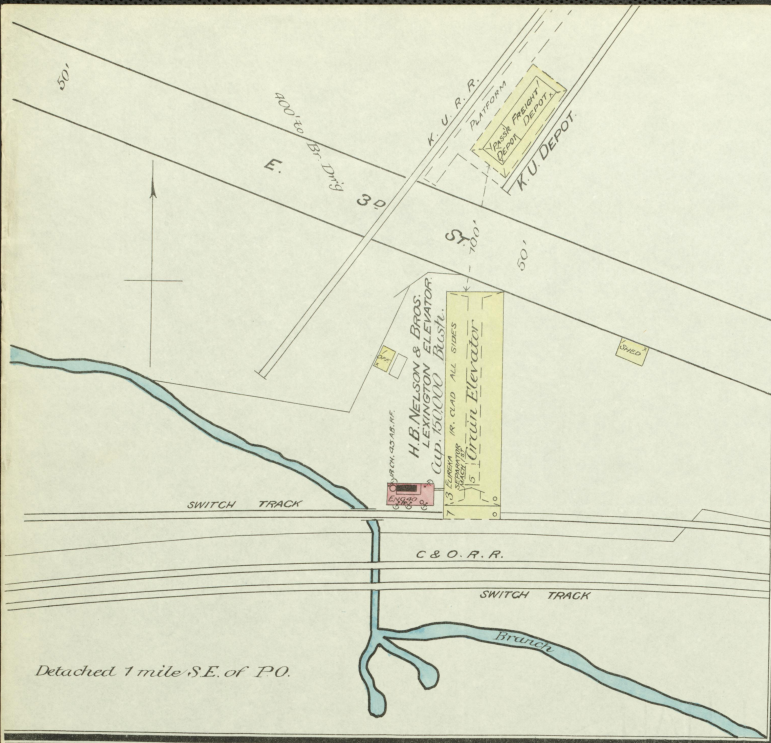
WARE HO. 'E'
BONDED W. HO.
CAP. 6000 BBS.
P.M. BARRICKS.

CAMP NELSON

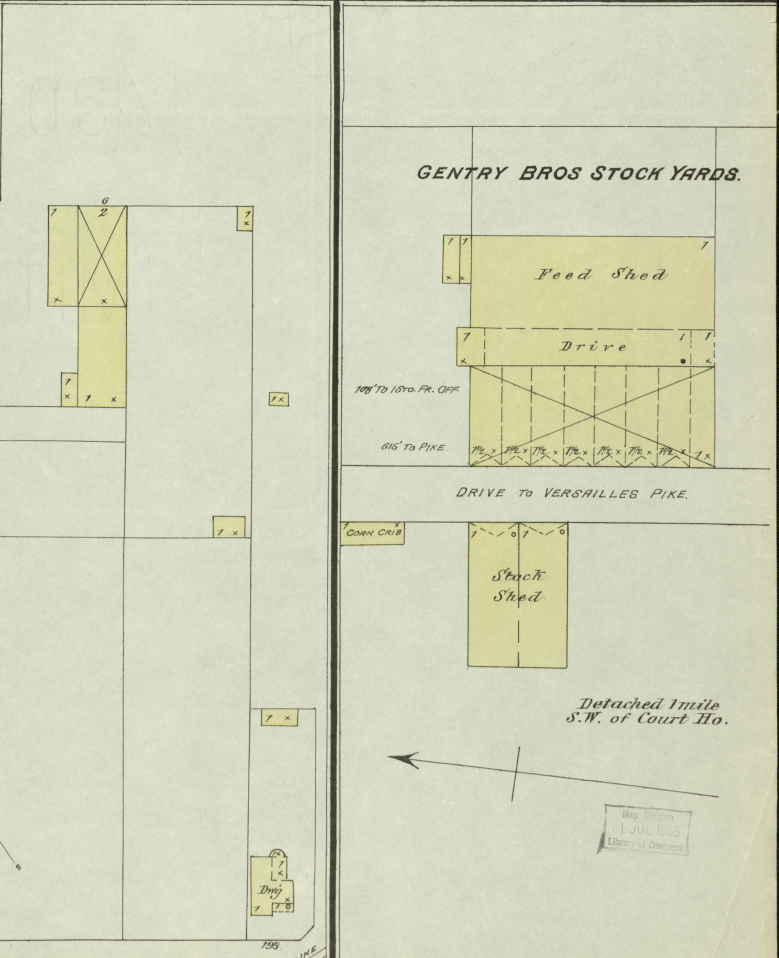
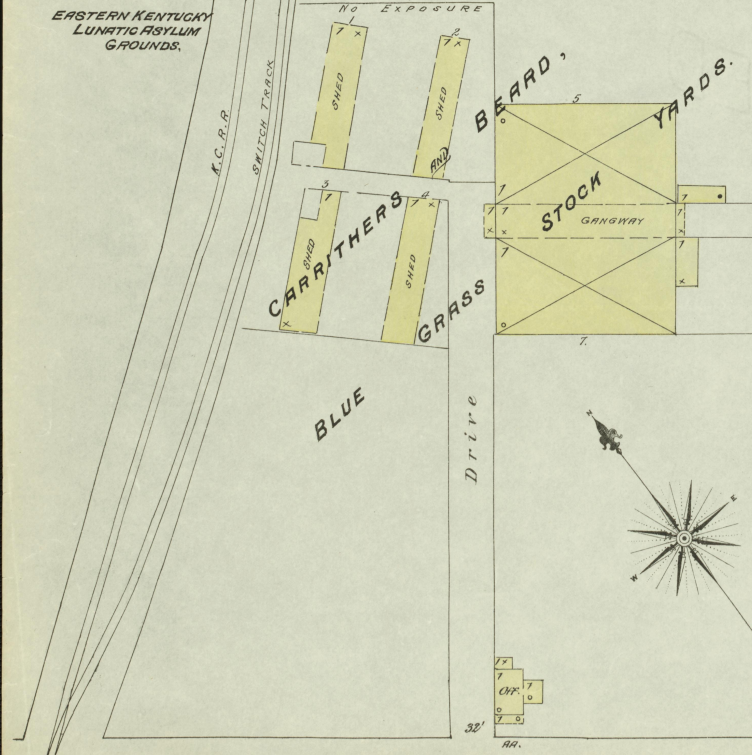
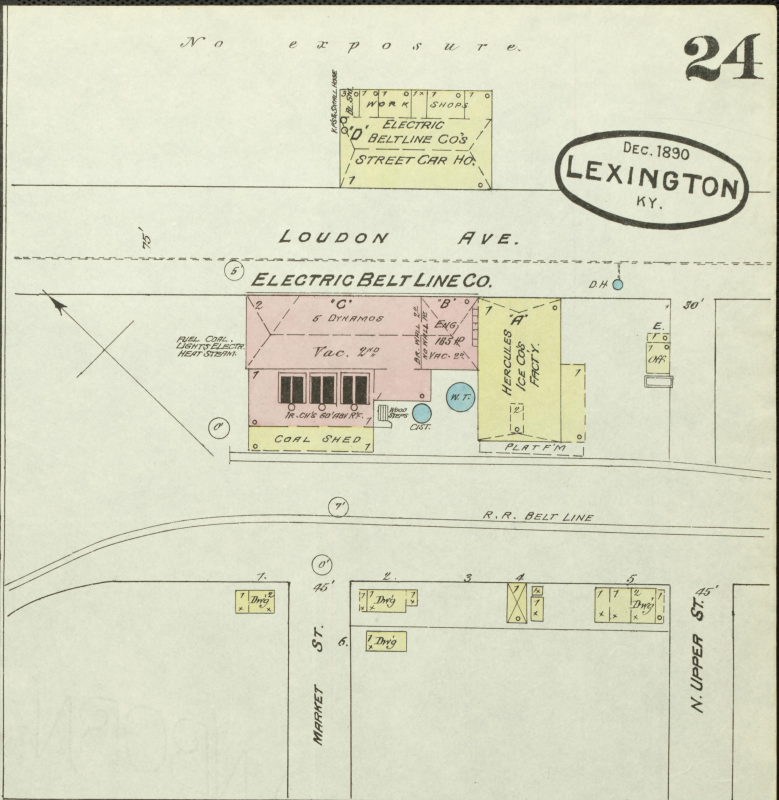
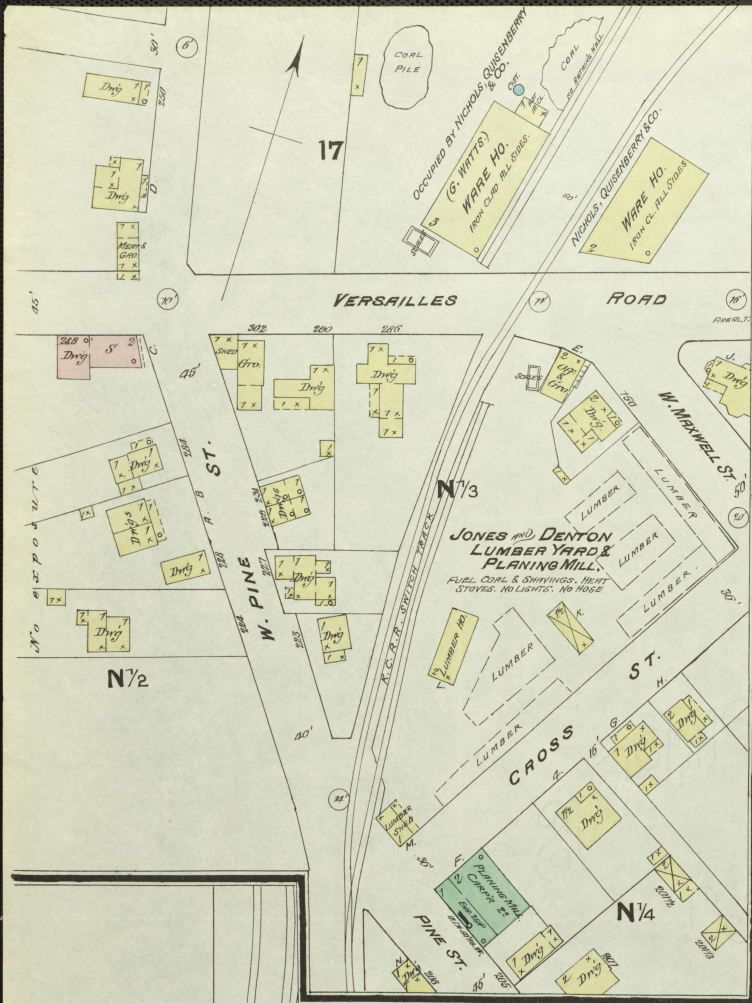
E.J. CURLEY
REGISTERED DISTILLERY.
1893 8TH DIST.
JESSEMIINE CO. KY.
NEAR 3 UNITS OF 2000 BARRELS FIELD TO 2000
MILES PER HOUR IN WIND. F.P. & 2000 W.S.
WINDY WATCHMAN RUN ONLY IN WIND. F.P. & 2000 W.S.
MILES PER HOUR IN WIND. F.P. & 2000 W.S.
MILES PER HOUR IN WIND. F.P. & 2000 W.S.
MILES PER HOUR IN WIND. F.P. & 2000 W.S.
20 MILES S. OF LEXINGTON KY.



Map Copied
JUL 1895
Library of Congress



DEC. 1890
LEXINGTON
KY.



25

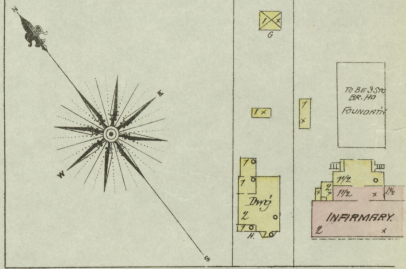
DEC 1890
LEXINGTON
KY.

17

CORRELL

5

WILKINSON ST.



ST.

ST. JOHN
EPISCOPAL
CHURCH

Scale of Feet.

CONSTITUTION

SEE BELOW

SPRUCE
SHEET

SEE

DEWEES

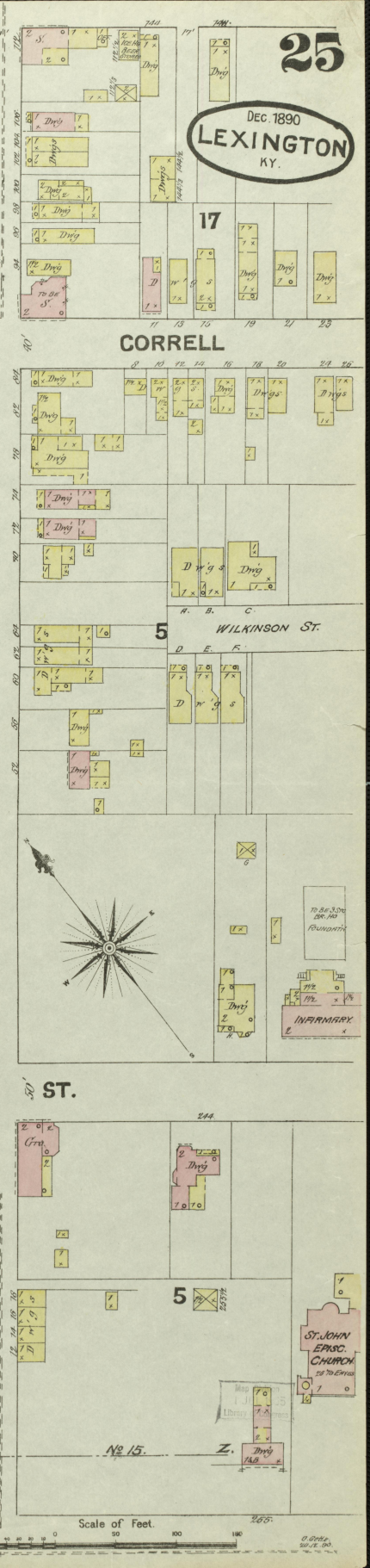
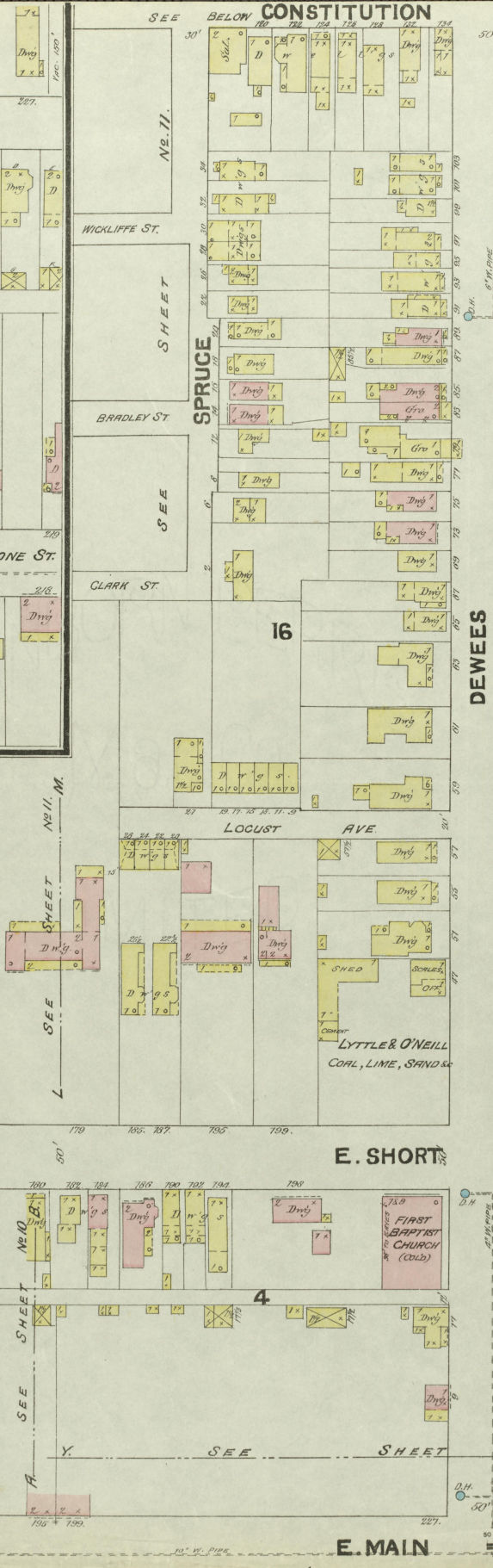
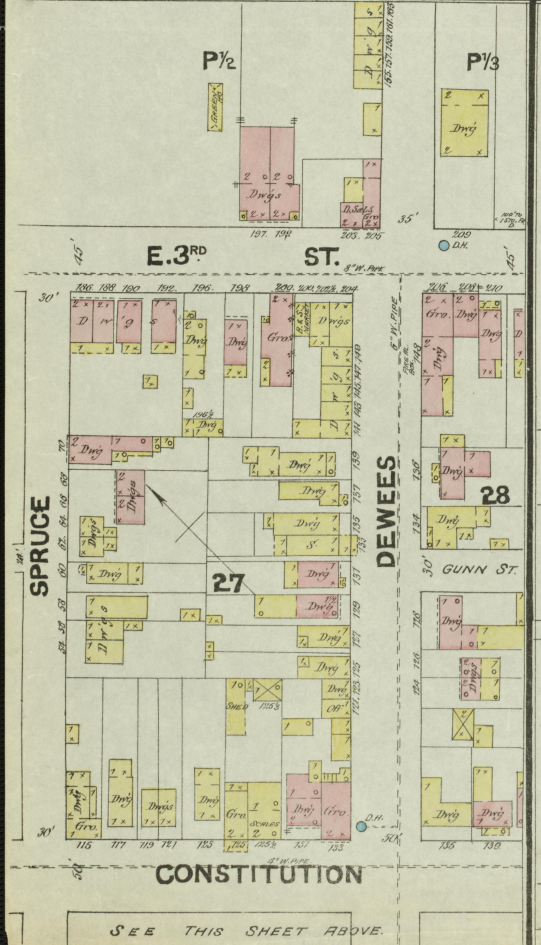
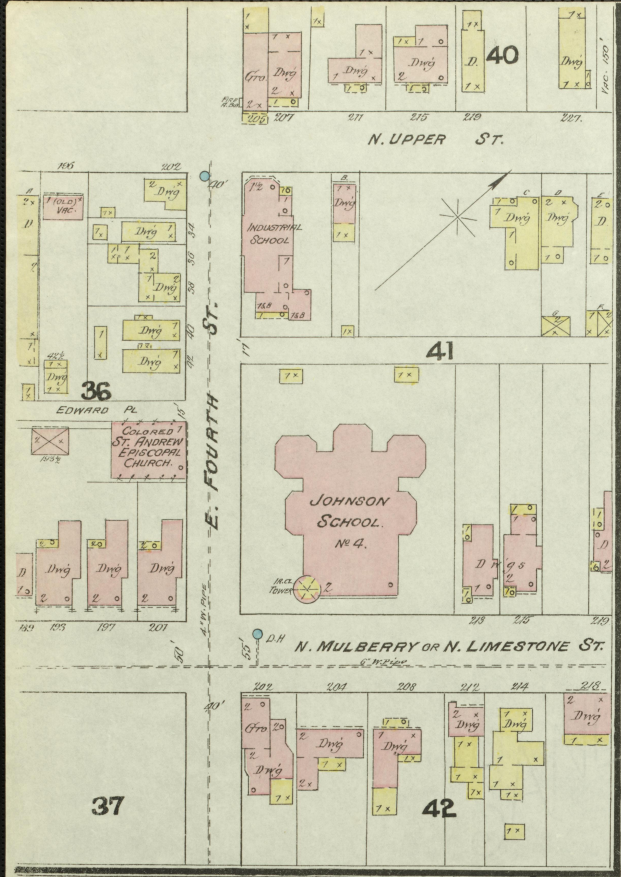
SEE
SHEET
NO. 11

SEE
SHEET
NO. 10

SEE SHEET

E. SHORT

E. MAIN



CONSTITUTION

SEE THIS SHEET ABOVE.

© 1890
S. T. E. CO.