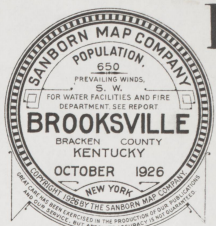


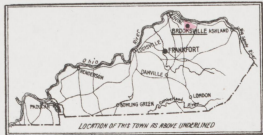
WATER FACILITIES:
No water mains. Water supply from private wells & fire cisterns.

FIRE DEPT.
Partly volunteer, 1 chief partly paid 1 chief chief volunteer & volunteer of 18 men 1 Fire Station 1 Willys Knight truck carrying American LaFrance pump capacity 1500 g.p.m. 400 cu. feet 5 5/8" chain hoist 1 500' chain hose 60 ft. hose Auxiliary 1000 ft. hose 100 ft. by telephone & set on Fire Station. No fire limits.

Paints (except Ground elevs. nearly level) Road, signs, etc. & csg.



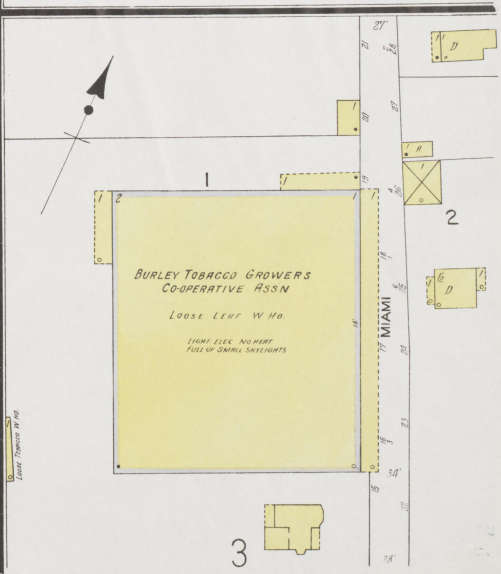
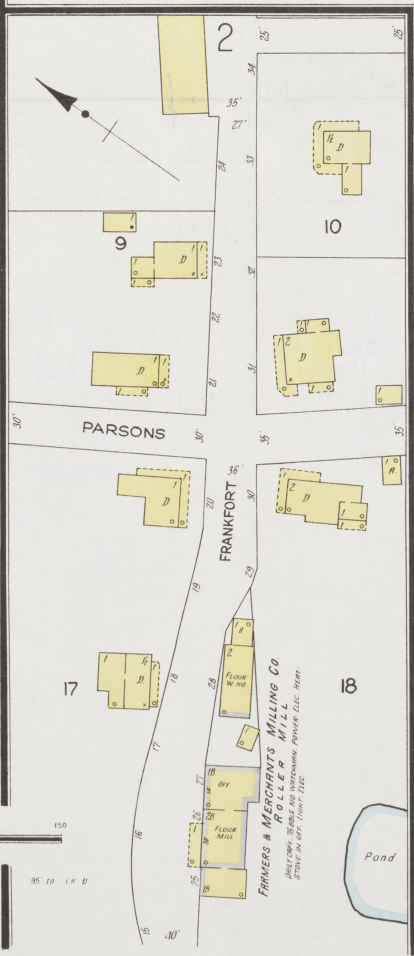
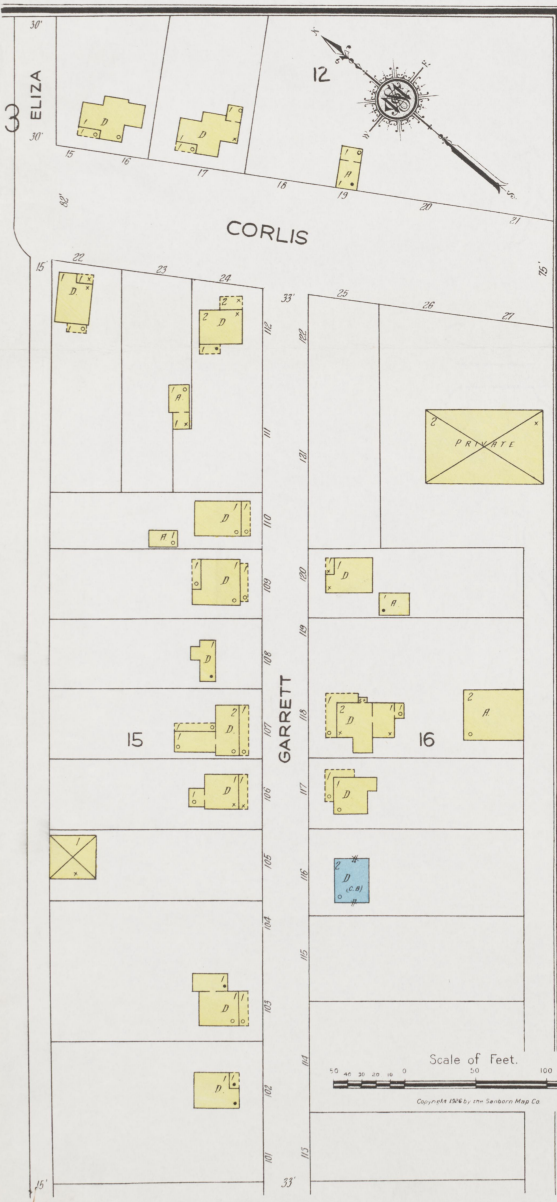
© OF 45728



Scale 600 feet to an inch (Approx.)

INDEX

SPECIALS	HEET
Baptist Church,	2
Brooksville High School,	2
Lumber Mill,	2
Burley Tobacco Growers Co-operative Ass'n, Warehouse, 1	
C	
Church of Christ,	3
C. & L. R. R. Depot, &c.,	2
County Court House and Jail,	2
F	
Farmers & Merchants Milling Co., Roller Mill,	1
Fire Department,	2
M	
Methodist Episcopal Church (South),	3
P	
Post Office,	2
S	
St. James' Roman Catholic Church, &c.,	3
Sellers Hotel,	2
T	
Telephone Exchange,	2
Town Hall,	2



KEY

STABLE (C.B.) CONCRETE BLOCK
BUILDINGS COLORED YELLOW FRAME
BRICK
BLEU
BROWN FIRE PROOF
INDICATE
FIRE EXTINGUISHERS
RELATIVE HEIGHTS
FIRE EXTINGUISHERS
ALTERNATE STREET NUMBERS ARE ACTUAL
CONNECTIVE STREET NUMBERS ARE ARBITRARY

OCT. 1926
BROOKSVILLE
KY.



TOWN HALL
LIGHTS, ELEC. NO HEAT.

BROOKSVILLE HIGH SCHOOL
HEAT, STEAM, LIGHTS, ELEC.

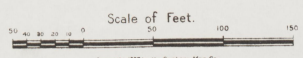
GYMNASIUM

BROCKEN COUNTY COURT HO.
FIRE ALARM, ELEC. COOK. PL.

SELLERS HOTEL

BROOKSVILLE LUMBER MILL
HEAT, STEAM, LIGHTS, ELEC. NO POWER

C. & A. R. R. DEPOT



OCT. 1926
BROOKSVILLE
KY.

3 FRANKFORT

3



Copyright 1926 by the Sanborn Map Co