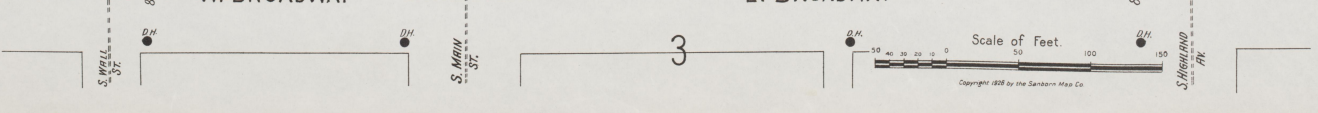
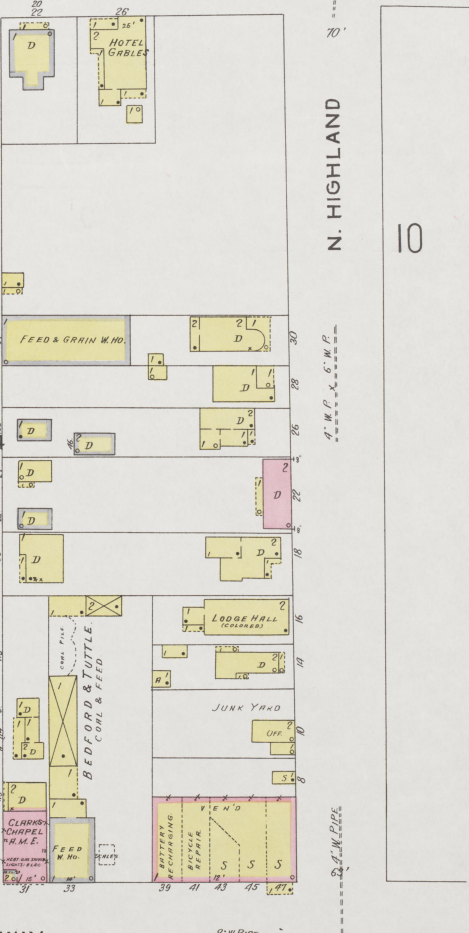
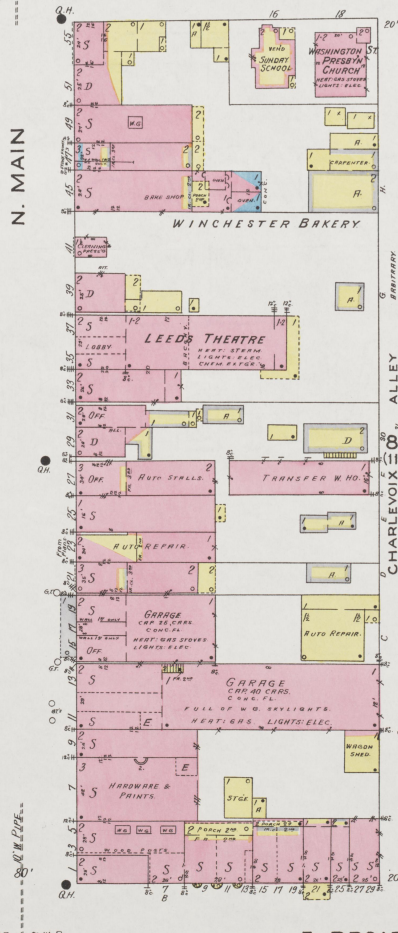
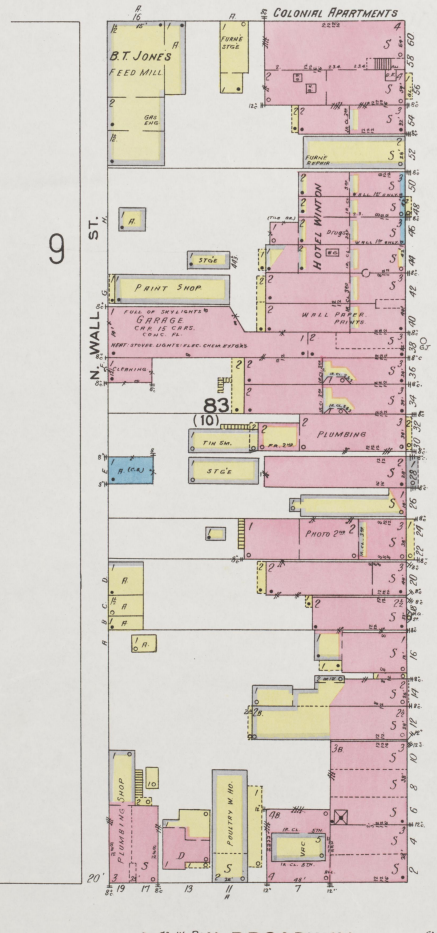
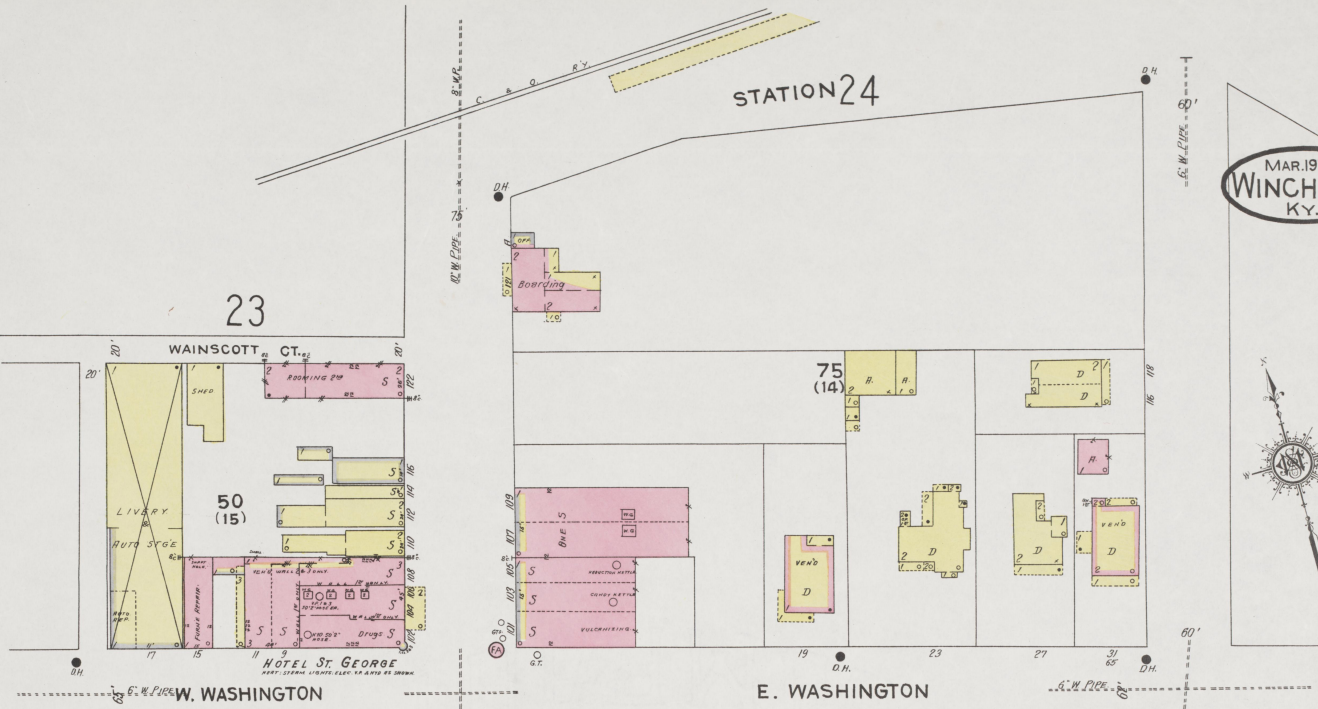




MAR. 1926  
WINCHESTER  
KY.



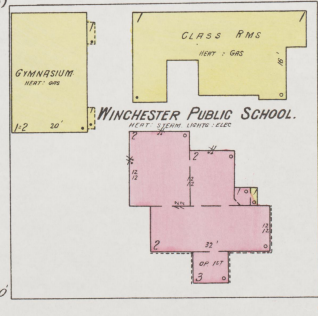
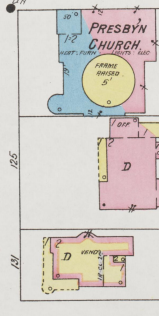
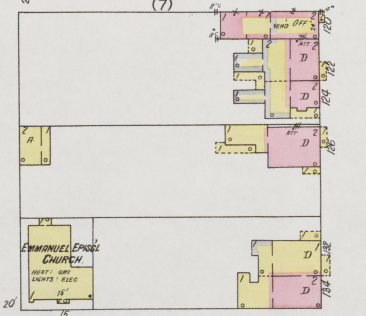
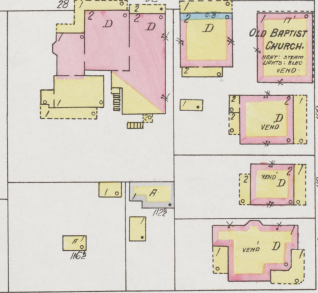
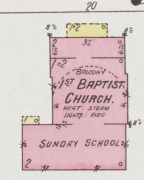
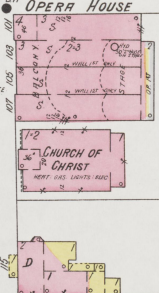
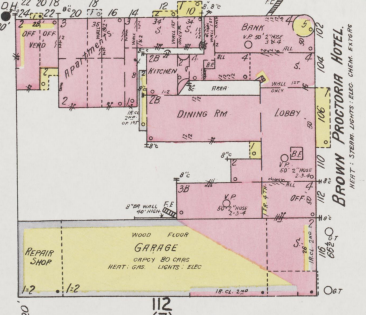
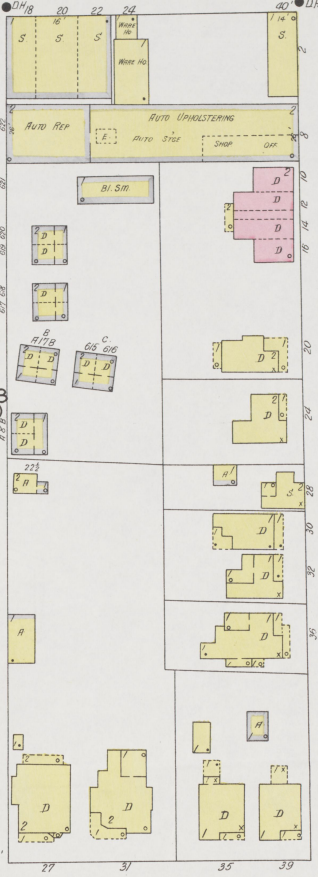
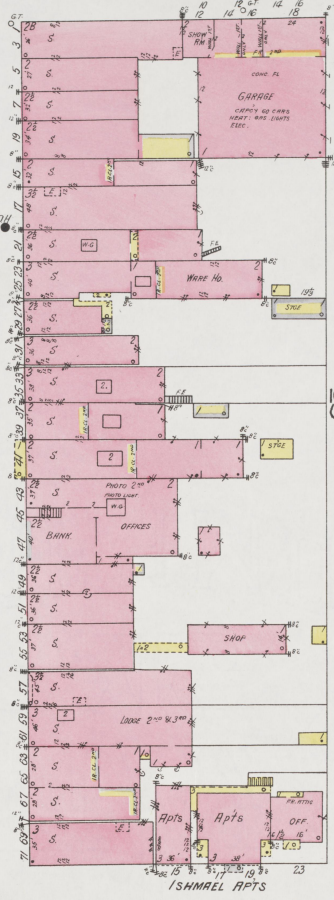
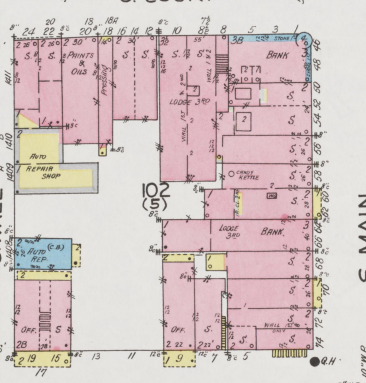
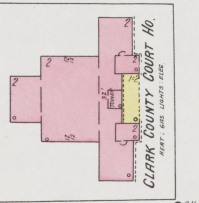
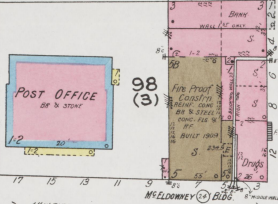
MAR. 1926  
WINCHESTER  
KY.



3

2

3

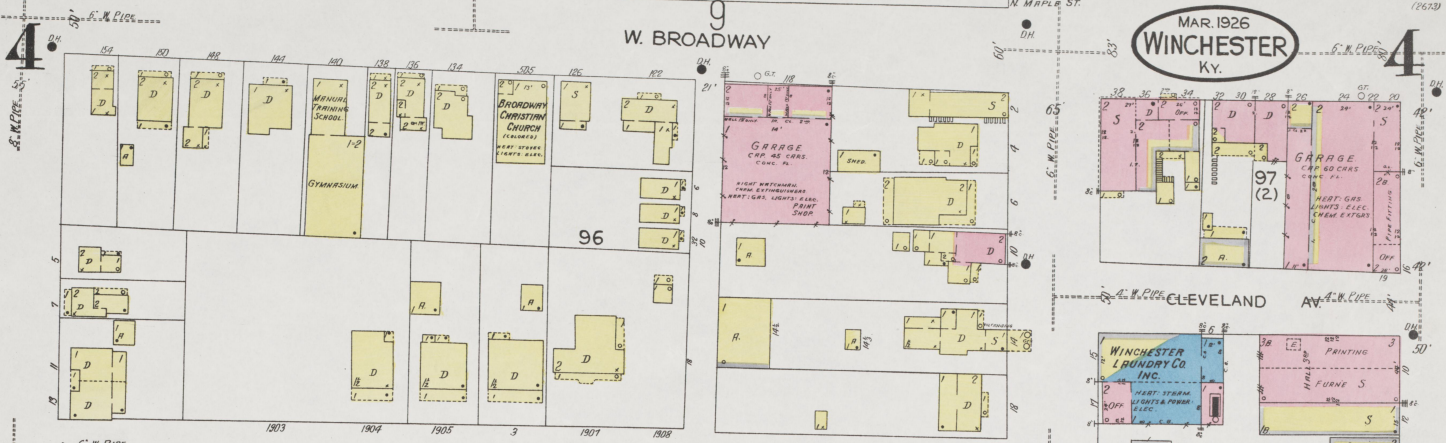


MAR. 1926  
WINCHESTER  
KY.

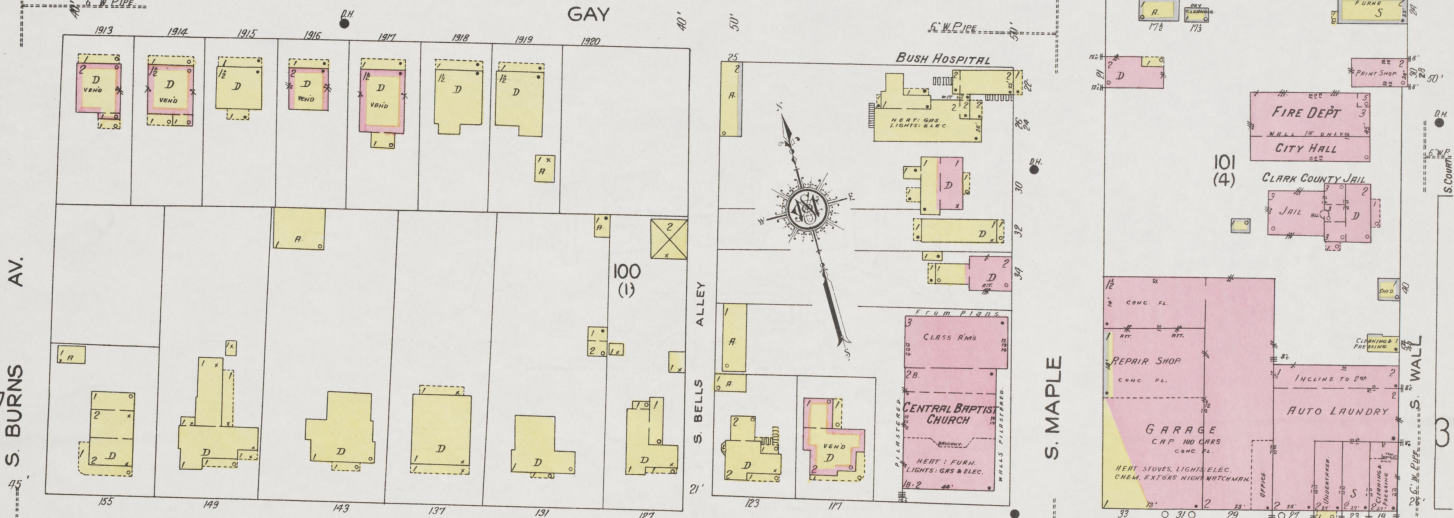
(2673)

W. BROADWAY

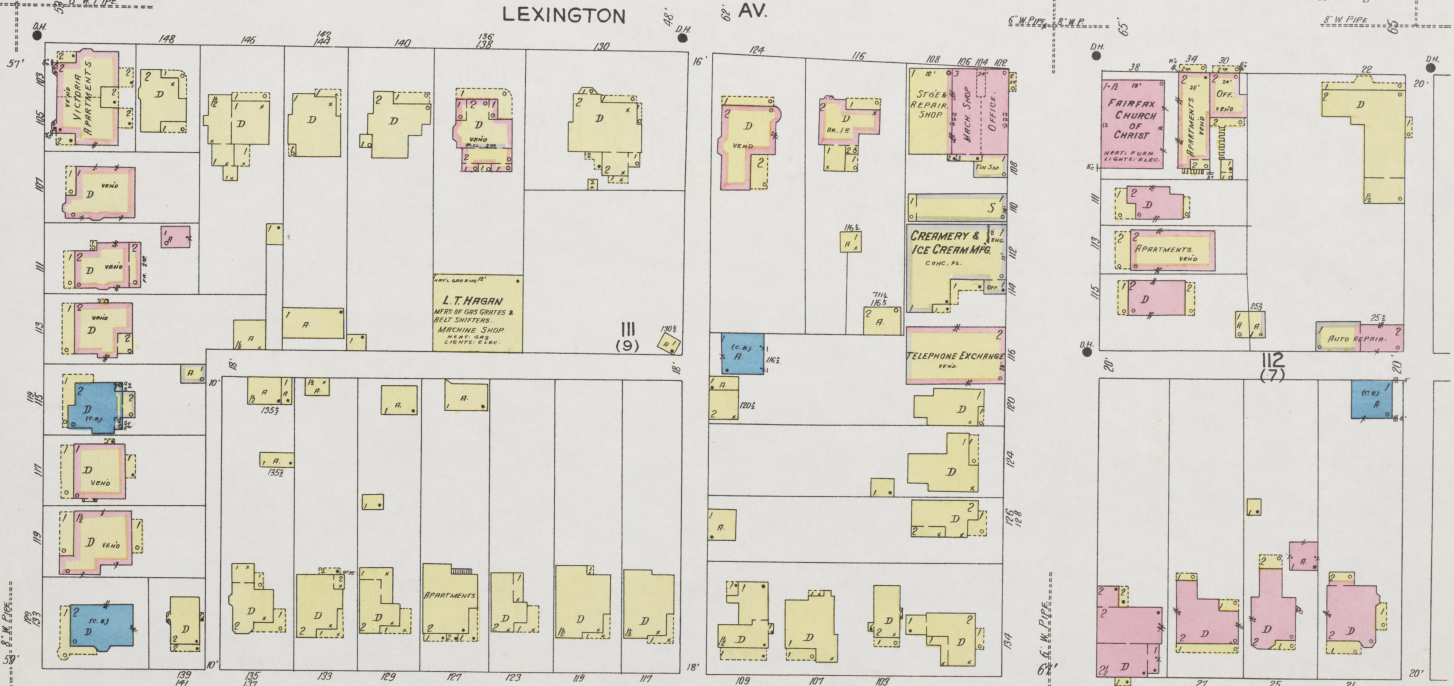
N. MAPLE ST.



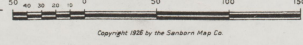
GAY



LEXINGTON



Scale of Feet.



Copyright 1926 by the Sanborn Map Co.

13

14

N. HIGHLAND ST.

N. KERRS AL.

E. BROADWAY

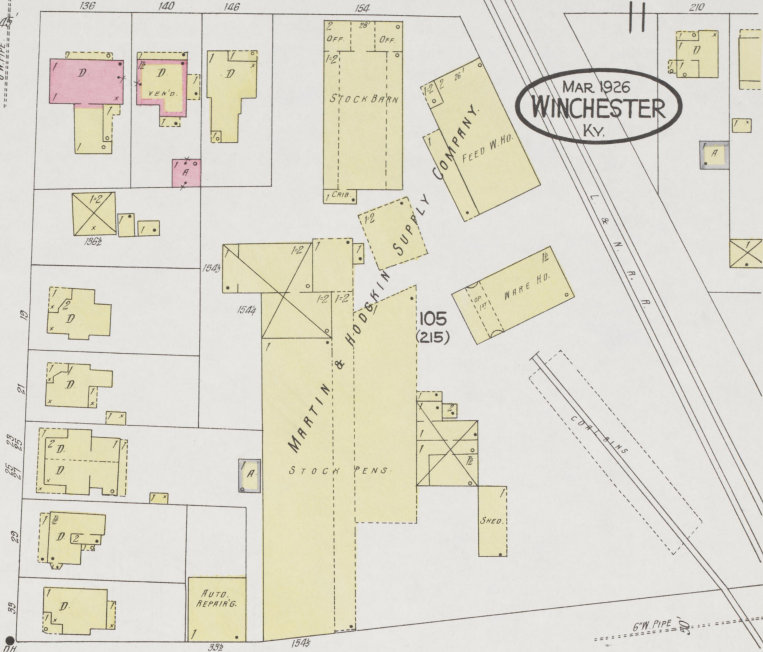
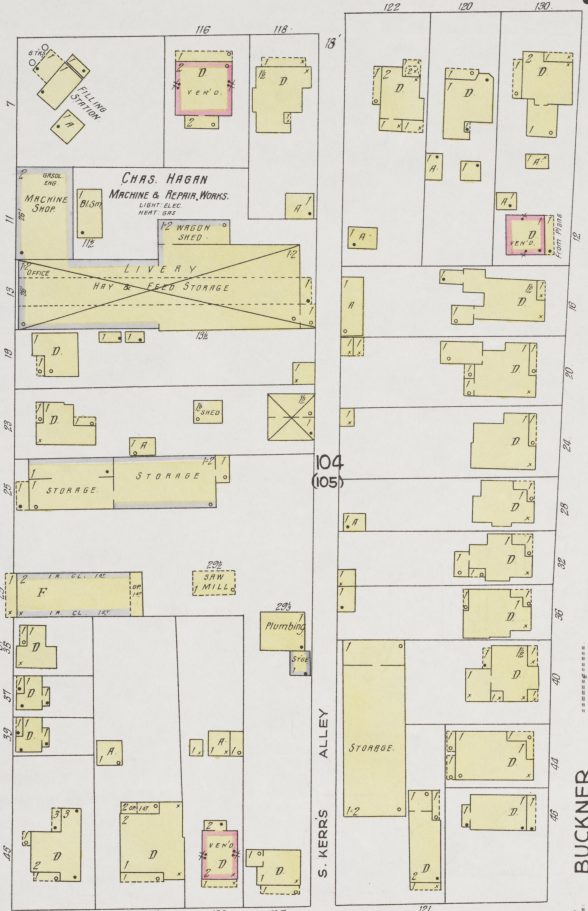
VINE ST.

5

10

5

MAR 1926  
WINCHESTER  
Ky.



S. HIGHLAND

S. KERRS ALLEY

BUCKNER

FLANNAGAN

CLARK COUNTY TOBACCO WARE HO. COMPANY.

FAIRFAX



115 (104)

116

Scale of Feet.

E. HICKMAN

15

6

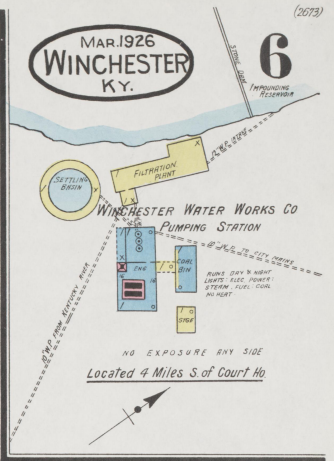
Copyright 1926 by the Sanborn Map Co.

6

MAR. 1926  
WINCHESTER  
KY.

6

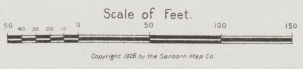
(2073)



J. N. CONGLETON  
LUMBER & COAL YARD

TAYLOR

W. BROADWAY



Copyright 1926 by the Sanborn Map Co.

7

W. BROADWAY 8

N. BURNS AV. (2673)

MAR. 1926  
WINCHESTER  
KY.

DIXIE

ST. C

94  
(224)

6



CLARK COUNTY HOSPITAL

POULTRY FARM

99

AV. S. BURNS

4

LEXINGTON AV.

CLARK COUNTY HIGH SCHOOL

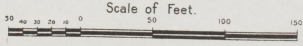
POTOMAC AV.

110  
(213)

PHILLIPS CT

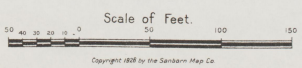
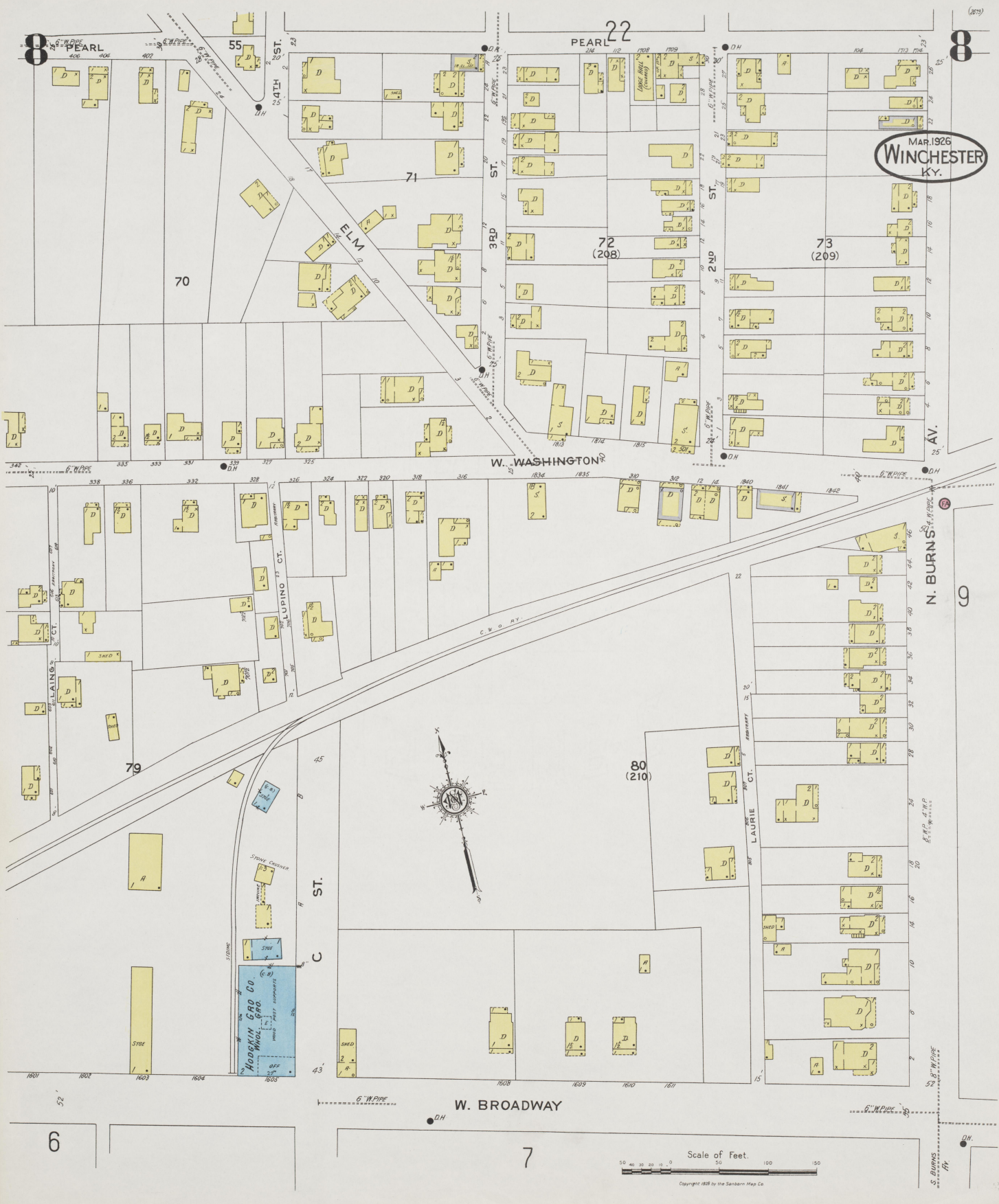
27

W. HICKMAN 27



Copyright 1926 by the Sanborn Map Co.

MAR. 1926  
WINCHESTER  
KY.



Copyright 1926 by the Sanborn Map Co.



MAR. 1926  
WINCHESTER  
Ky.

9



22

23

23

9

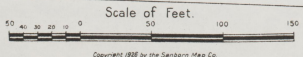
8

81  
(103)

83  
(10)

W. BROADWAY

4

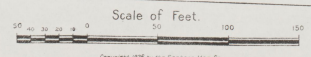


Copyright 1926 by the Sanborn Map Co.

STATION ST. 10

10

MAR 1926 WINCHESTER Ky.



11



25

JEFFERSON

MAR. 1926  
WINCHESTER  
KY.

26

(2613)



E. WASHINGTON



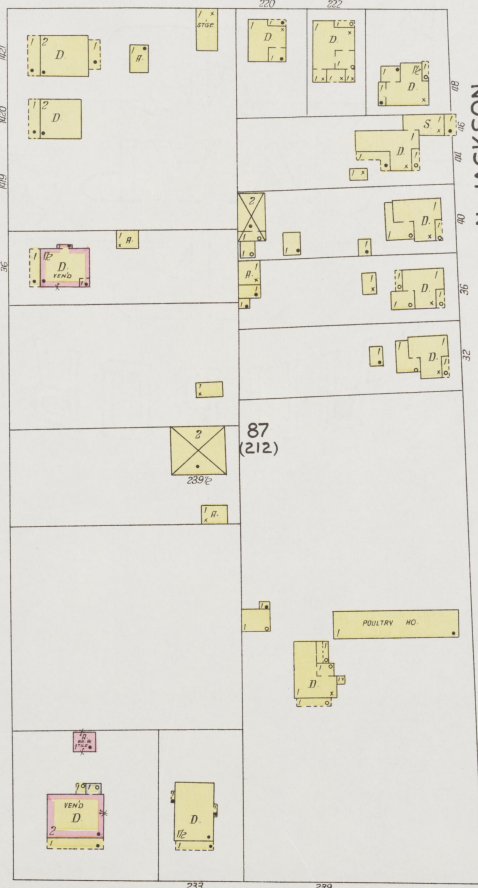
VINE

10

86  
(212)

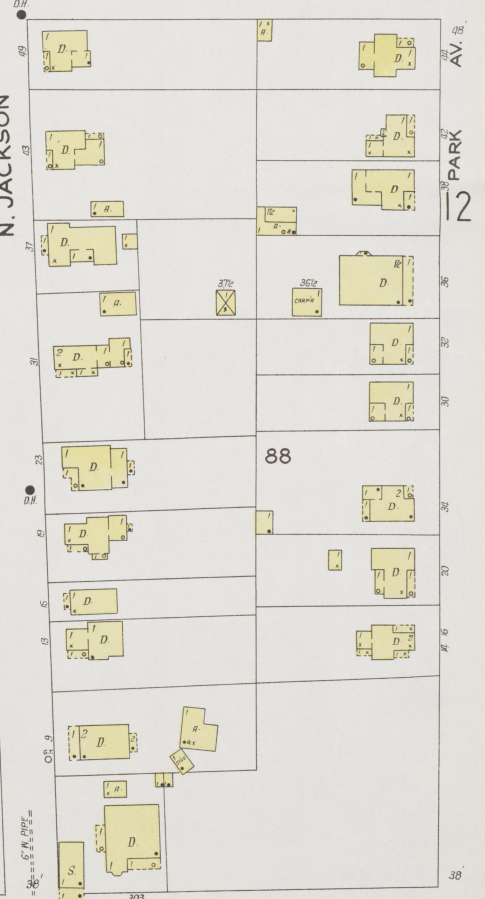
SMITH

E. BROADWAY



87  
(212)

N. JACKSON

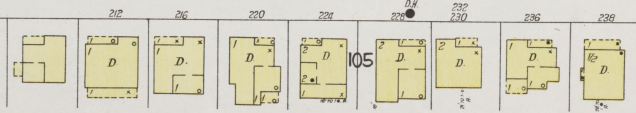


88

PARK

12

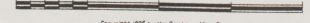
5



(215)

Scale of Feet.

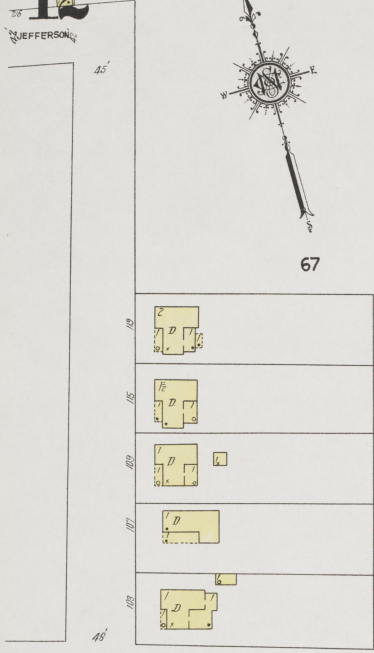
106



Copyright 1926 by the Sanborn Map Co.

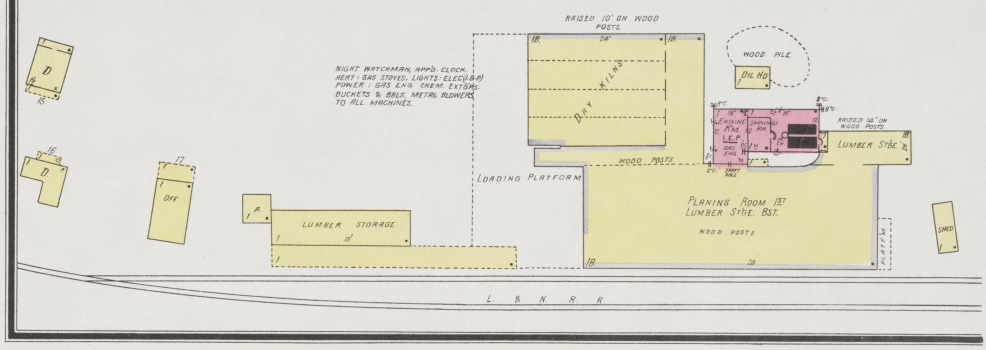


67

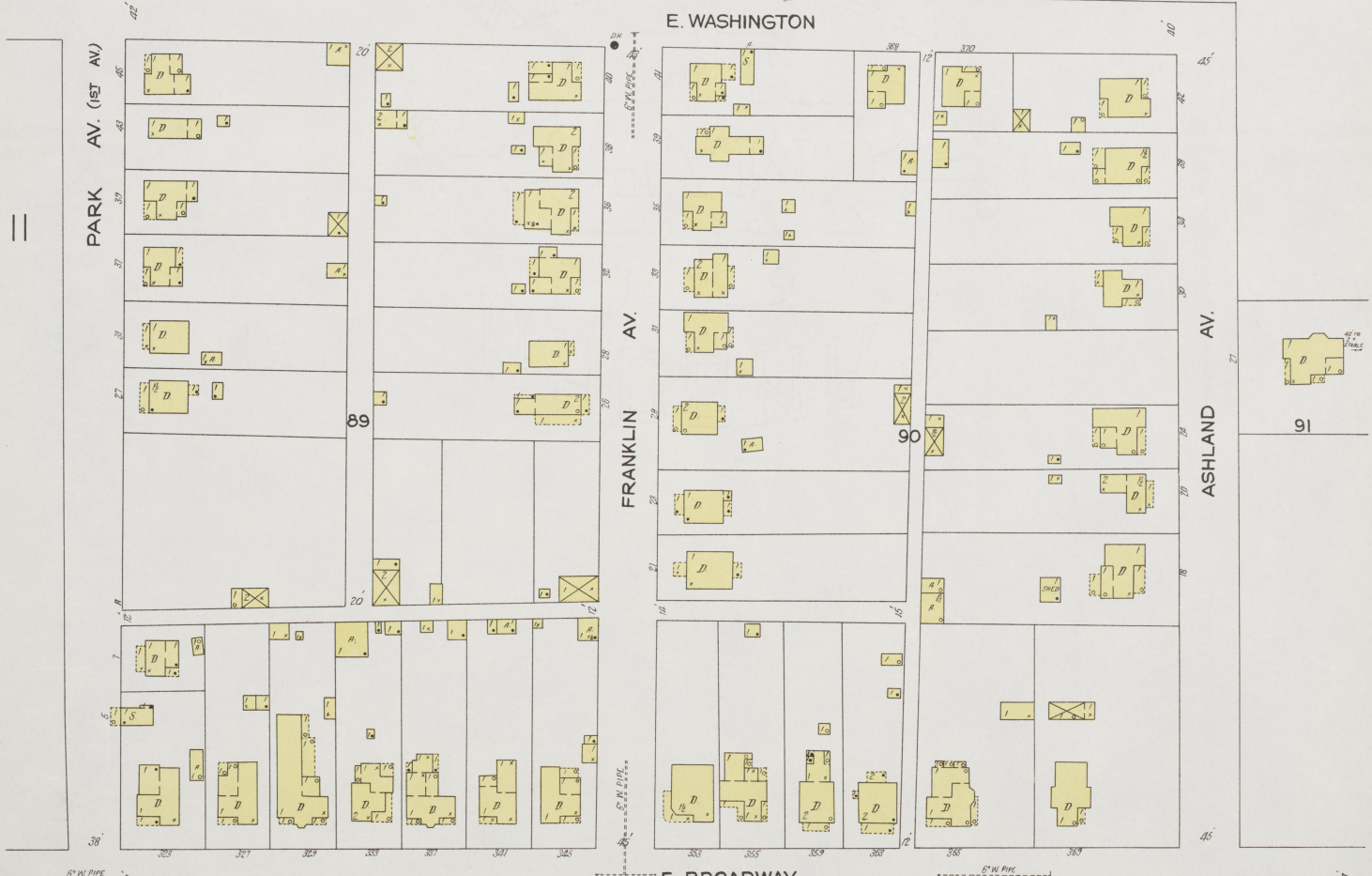


MAR 1926  
WINCHESTER  
KY

KENTUCKY HARDWOOD FLOORING CO.  
PLANING MILL



67



E. WASHINGTON

E. BROADWAY

Scale of Feet.  
0 50 100 150

Copyright 1926 by the Sanborn Map Co.



(2672)

14

47



W. HICKMAN

E. HICKMAN

BOONE AV.

S. MAPLE

S. MAIN

BOONE AV.

13

15

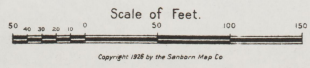
123  
(12)

120  
(13)

122  
(31)

18

19



15

3

5

15

E. HICKMAN

115  
(104)  
BURLY GROWERS  
COOPERATIVE ASSN  
Tobacco  
BARN

MAR. 1926  
WINCHESTER  
KY.

ST CHRISTIAN CHURCH

S. HIGHLAND

125  
(1A)

126  
(217)

CALLOWAY

14

123  
(12)

16

ALABAMA

128  
(219)

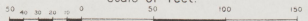
124  
(12)

S. HIGHLAND

CENTRAL AV.

19

Scale of Feet.



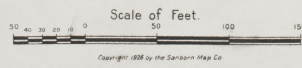
Copyright 1926 by the Sanborn Map Co.



16

16

MAR. 1926  
WINCHESTER  
KY.



19

CENTRAL AV.

CHAPEL

137



17

13

17

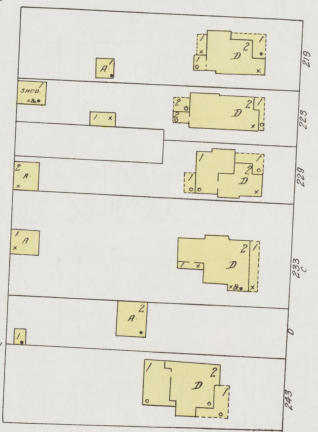
COLLEGE AV.



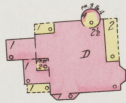
133

HAGGARD

BOONE AV.



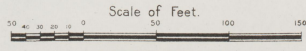
134  
(216)



BELMONT AV. (COLBY PIKE)

20

BELMONT AV.

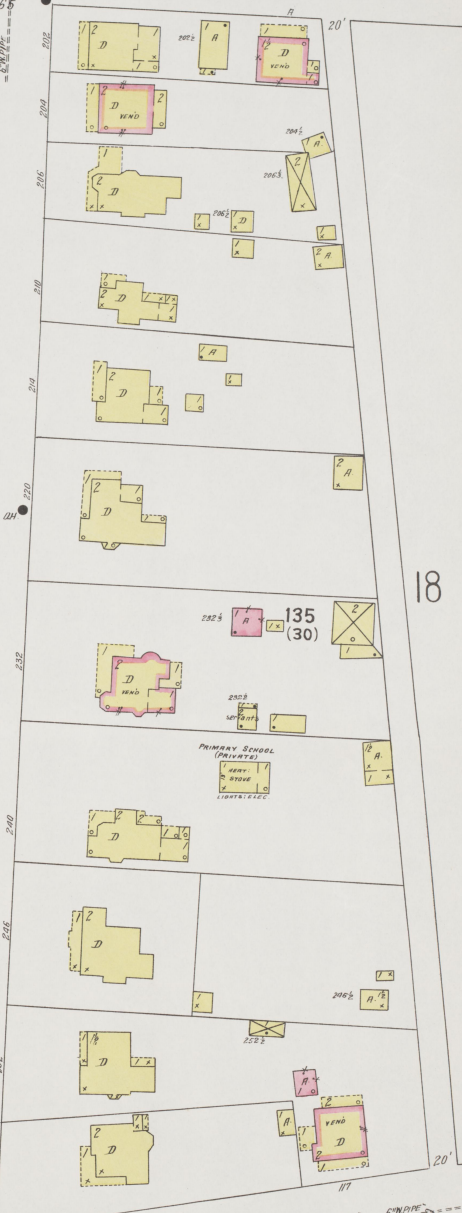


Copyright 1926 by the Sanborn Map Co.

27

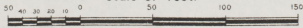
S. BURNS AV.

18





Scale of Feet.



Copyright 1926 by the Sanborn Map Co.

19

19

MAR. 1926  
WINCHESTER  
KY.



Scale of Feet.  
0 50 100 150  
Copyright 1926 by the Sandborn Map Co.

20

MAR. 1926  
WINCHESTER  
KY. 18

20

(8873)



BELMONT AV. (COLBY PIKE)

17



139

BELMONT AV.

SHORT

BOONE AV.

SHORT

149

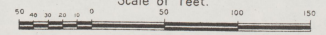
MOUNDALE AV.

S. MAPLE

21

MAPLE AV.

Scale of Feet.



Copyright 1926 by the Sanders Map Co.

MAR. 1926  
WINCHESTER  
KY.

21

21



Scale of Feet.  
50 100 150  
Copyright 1926 by the Sanborn Map Co.

22

28

MAR. 1926  
WINCHESTER  
KY.

22

(2673)

CITY SLAUGHTER HOUSE  
D.B. RASH PROP.  
HOT. STOV. LIGHTS. ELEC.  
POWER STEAM. FUEL COAL.

SAINTS CHURCH

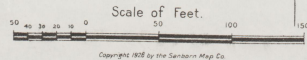
EVANS

WALNUT

ST.

N. BURNS AV.

PEARL



49  
(228)

KENTUCKY UTILITIES ICE CO.



23

WALNUT ST.

62  
(227)

RECTON ALLEY

8

9



23

28

23

FANNIE BUSH PUBLIC SCHOOL  
NEAR STEAM LIGHTS ELEC. L.P. & GAS  
AS SHOWN CHEM. EXTRACTS

MAR. 1926  
WINCHESTER  
Ky.

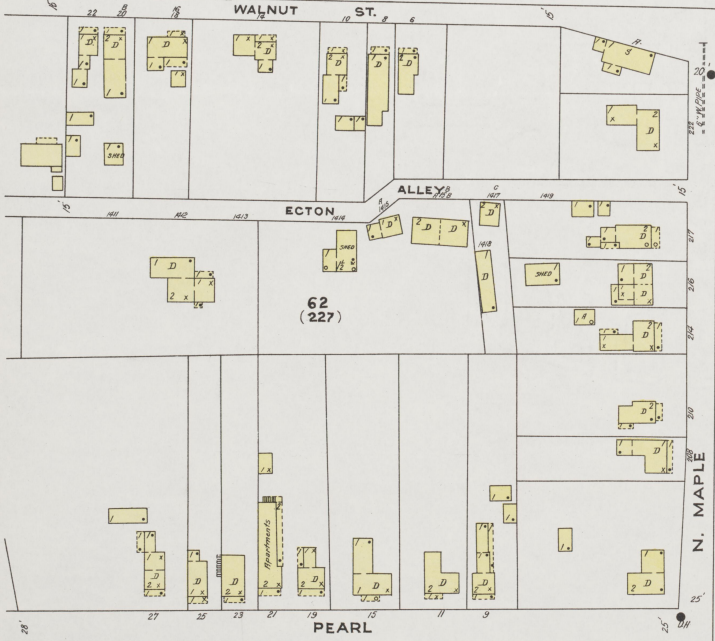


49  
(228)

22

KENTUCKY UTILITIES CO.  
LIGHT, POWER & ICE PLANT

MAP & PLAN DETAILED BY N. W. HAYES, PEAK, ONE LEVEL, 1925.  
ELEC. L.P. & GAS POWER - GAS LINES TO COMPRESSION  
SYSTEM - GAS MACHINES - TOTAL CAPACITY 60 TONS PER  
HOUR AS SHOWN.



R. P. SCOBEE & SON CO. INC.  
MILL WORK

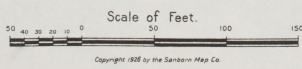
NOTE: (SEE DETAILS OF MILL WORKING  
MILL WORK) (SEE DETAILS OF MILL WORK)  
IN WATER GALS. NEAR WATCHMAN WIND  
TOWER.

9

24

N. MAIN

2



Copyright 1926 by the Sanborn Map Co.

24

29

24

MAR. 1926  
WINCHESTER  
KY.

MAHAN WHOLESALE  
GROCERY & SUPPLY CO.  
WHOL. GROC. WARE HO.  
HEAT. ONE STOVE. SINKS EACH  
CER. STOVE. WIND PANS

SEED GRAIN & HEMP  
STORAGE

PENDLETON



43  
(27)

23

N. MAIN

WINN AV.

29

63  
(26)

HO-BE LUMBER CO. INC.

25

POULTRY WARE HO.  
SEED WARE HO.  
COFF & BUSH

DR. WELLS  
MACHINE WARE HO.

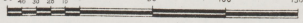
PASSENGER DEPOT  
C. & O. & L. & N.  
DEPOT

L. & N. & C. & O.  
FREIGHT DEPOT

STATION

2

Scale of feet.

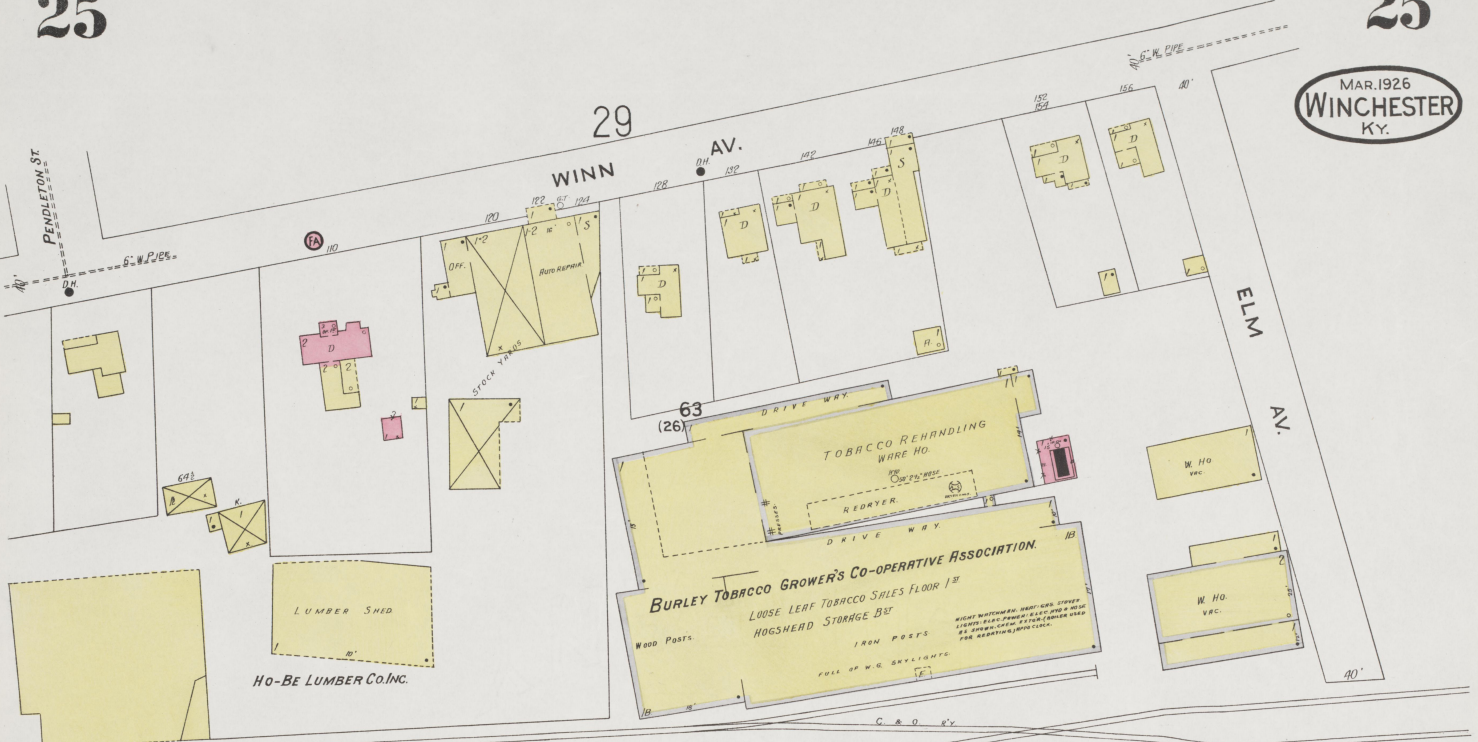


Copyright 1926 by the Searborn Map Co.

N. HIGHLAND ST

JEFFERSON ST





26

29

26

26

MAR. 1926  
WINCHESTER  
KY.

ELM AV.

N. JACKSON

WINN AV.

WINN AV.

64  
(206)

65  
(207)

26

65  
(207)

THE CHURCH OF  
LIVING GOD

Auto Stores

25



N. JACKSON

NEW

BURLEY TOBACCO GROWERS

HOGSHEAD TOBACCO WARE HO  
NO HEAT - LIGHTS - ELECTRIC.  
WOOD POST SUPPORTS.  
EARTH FL.

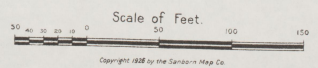
CO-OPERATIVE ASSN.

67

HOGSHEAD TOBACCO WARE HO.  
NO HEAT - LIGHTS - ELECTRIC.  
WOOD POST SUPPORTS.  
EARTH FL.

12

JEFFERSON



Copyright 1926 by the Sanborn Map Co.

MAR 1926  
WINCHESTER  
Ky.



Scale 100 ft. to One Inch.

Copyright 1926 by the Sanborn Map Co.

KENTUCKY RIVER 500' STREAM

WINCHESTER HIGH SCHOOL

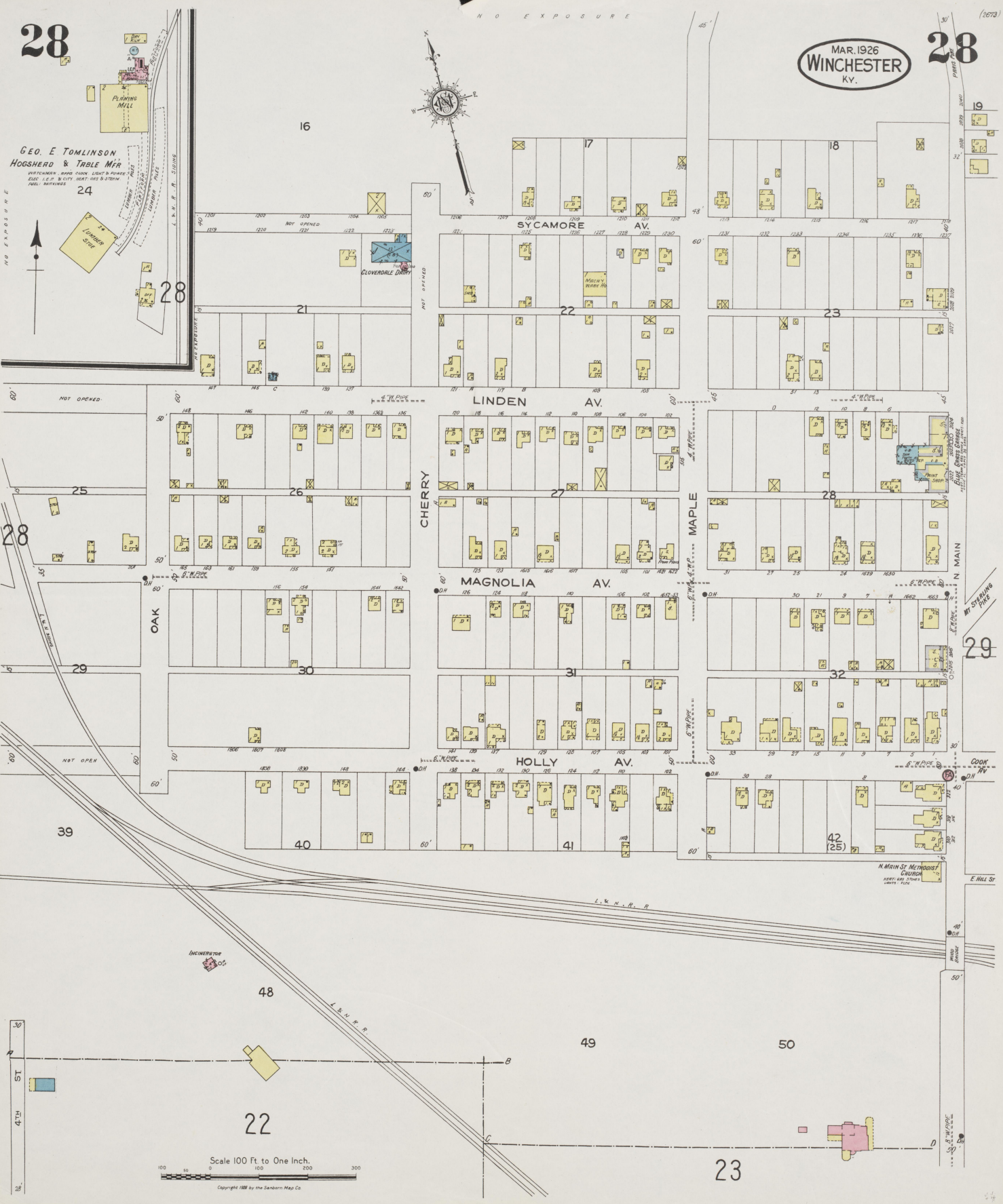
ROOF CORROSIONARY AND IRON STUDS - LIGHTS EXPOSED  
 1/4" IN WALLS AND CORNERS - 2" THICK CONCRETE EXPOSED  
 EXPOSED STEEL BEAMS IN ROOF - STEEL TRUSS ROOF  
 ROOF - CONG. FLOORS IN ROOF - 8" RIGID CONCRETE WALLS

FORD  
 Located 10 Miles S of Winchester

28

MAR. 1926  
WINCHESTER  
KY.

28



NO EXPOSURE



**GEO. E. TOMLINSON**  
**HOGHEAD & TABLE MFR**  
 WATCHMEN, ROPS, TUBS, LIGHT & POWER  
 ELECT. T. & P. & CITY HEAT, GAS & STEAM  
 PAINT, PAINTING

24

28

16

17

18

21

22

23

28

29

39

OAK

CHERRY

MAPLE

N. MAIN

29

LINDEN AV.

MAGNOLIA AV.

HOLLY AV.

40

41

42

(25)

48

49

50

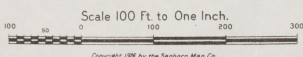
22

23

Scale 100 Ft. to One Inch.  
 Copyright 1926 by the Sanborn Map Co.



24 WINCHESTER ROLLER MILLS Co.  
WINTHAM, MD. CLARK, LIGHTS, E. EGGER, JR.  
NO. 1007 BROADWAY, CLARK & CO. CAR BANGS BRY  
ANYTIME IN SERVICE  
CAPACITY FLOUR MILLS 1200 BLS. PER 24 HOURS  
CAPACITY CORN MILL 1000 BLS. PER 24 HOURS



Copyright 1926 by the Sanborn Map Co.