

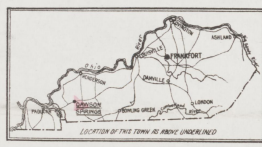
NOTE Alternate house numbers are actual and are those up on buildings. As a means of designation two or more consecutive numbers have been supplied to buildings having no actual numbers.



NOV 17 '25 31674

WATER FACILITIES:
 Water Works owned by Private Company.
 Direct pumping & gravity system.
 Water is pumped from five 6" wells by five Cooke deep well pumps. One 12" three 8" 2" by one 8" 3" into an 8,500 gallon reservoir located at plant, elevated about 120 ft above town. Water is then pumped into a 250,000 gallon reservoir located 1/2 mile east of town, situated 200 ft above town by two Fairbanks-Morse pumps size 12-25-C; capacity of pumps 250 G.P.M. each. Gravity flow from large reservoir into main.
 No auxiliary system.
 4 Miles of 8" pipe, 18 Double hydr.
 Average daily consumption 100,000 gallons.
 Domestic pressure 42 lbs.
 Fire pressure 62 lbs.

FIRE DEPT.
 One volunteer company. One chief, One asst. chief, 9 Men.
 Paid per fire, One fire station.
 One Ford chemical truck with 2000 ft. 2 1/2 hose, Two 35 gallon chemical tanks, with 250 ft. chemical hose, Brick building.
 Fire alarm - siren located at corner of S. Main & Railroad St.
 6 Mains 5" paved.
 Ground elevations nearby level.
 Public Lighting - Electric.



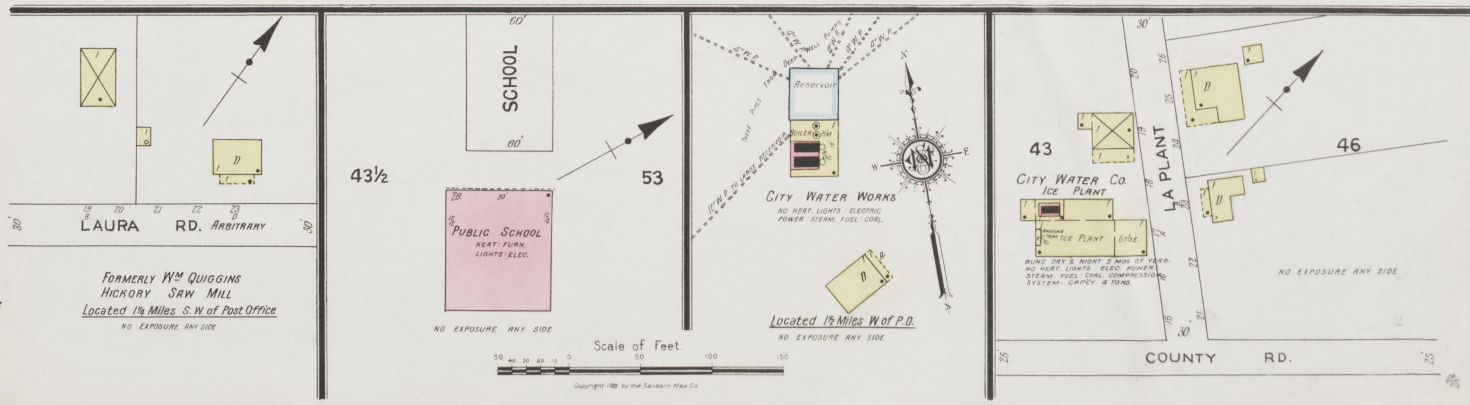
KEY

Fire, W.D.C. any roof
Steel, concrete
Fire, W.D.C. any roof
Wood, concrete
Fire, W.D.C. any roof
Frame partition
Opening with iron door
Standard
Window & door
Window, 1st story
Window, 2nd story
Window, 3rd story
Window, 4th story
Window, 5th story
Window, 6th story
Window, 7th story
Window, 8th story
Window, 9th story
Window, 10th story
Window, 11th story
Window, 12th story
Window, 13th story
Window, 14th story
Window, 15th story
Window, 16th story
Window, 17th story
Window, 18th story
Window, 19th story
Window, 20th story
Window, 21st story
Window, 22nd story
Window, 23rd story
Window, 24th story
Window, 25th story
Window, 26th story
Window, 27th story
Window, 28th story
Window, 29th story
Window, 30th story
Window, 31st story
Window, 32nd story
Window, 33rd story
Window, 34th story
Window, 35th story
Window, 36th story
Window, 37th story
Window, 38th story
Window, 39th story
Window, 40th story
Window, 41st story
Window, 42nd story
Window, 43rd story
Window, 44th story
Window, 45th story
Window, 46th story
Window, 47th story
Window, 48th story
Window, 49th story
Window, 50th story
Window, 51st story
Window, 52nd story
Window, 53rd story
Window, 54th story
Window, 55th story
Window, 56th story
Window, 57th story
Window, 58th story
Window, 59th story
Window, 60th story
Window, 61st story
Window, 62nd story
Window, 63rd story
Window, 64th story
Window, 65th story
Window, 66th story
Window, 67th story
Window, 68th story
Window, 69th story
Window, 70th story
Window, 71st story
Window, 72nd story
Window, 73rd story
Window, 74th story
Window, 75th story
Window, 76th story
Window, 77th story
Window, 78th story
Window, 79th story
Window, 80th story
Window, 81st story
Window, 82nd story
Window, 83rd story
Window, 84th story
Window, 85th story
Window, 86th story
Window, 87th story
Window, 88th story
Window, 89th story
Window, 90th story
Window, 91st story
Window, 92nd story
Window, 93rd story
Window, 94th story
Window, 95th story
Window, 96th story
Window, 97th story
Window, 98th story
Window, 99th story
Window, 100th story

INDEX

STREETS	NUMBER	KEY	NUMBER	KEY	NUMBER	KEY	NUMBER	KEY					
Alexander, A	5	Keigan, E.	300-307	5	Railroad Ave., E.	100-114	42	Walnut, W.	109-111	4	Hamby Hotel,	H	2
County Road, C	1	W.	300-307	3	"	101-113	4	Water,	200-307	3	"	I	2
Cross,	5	La Plant, L	1 & 5	1	"	215-312	5	Wayne Place (arbitrary),	100-137	2	"	J	2
First Mineral, F	300-321	Laura Road (arbitrary),	1 & 5	1	"	100-120	4	"	200-306	3	"	K	2
Flour,	100-425	Locust,	100-115	5	"	101-315	2	"	100-119	2	"	L	2
Franklin,	100-425	"	201-315	4	Rampsey, W.	100-205	2	"	106-119	2	"	M	2
Hall, E.,	100-209	Madisonville Road,	2, 4 & 5	5	"	100-205	2	"	106-119	2	"	N	2
" W.,	100-115	Main, N.,	100-315	4	School, S	100-314	4	"	106-119	2	"	O	2
Hockney,	200-307	Munn, E.,	100-119	2	Second Mineral,	101-315	3	"	106-119	2	"	P	2
Holmes,	200-307	" W.,	100-205	2	Sycamore,	400-425	3	"	106-119	2	"	Q	2
Hunter,	200-307	O'Bryan,	300-501	5	Walnut, E.,	100-209	4	"	106-119	2	"	R	2
Keigan, E.,	100-211	Pine,	200-315	5	" W.,	300-315	5	"	106-119	2	"	S	2
		Poplar see First Mineral,	2	2	"	315-415	5	"	106-119	2	"	T	2
					"	100-107	4	"	106-119	2	"	U	2
					"	106-110	3	"	106-119	2	"	V	2

* Indicates only one side of Street shown.





JULY 1925
DAWSON SPRINGS
KY.

2

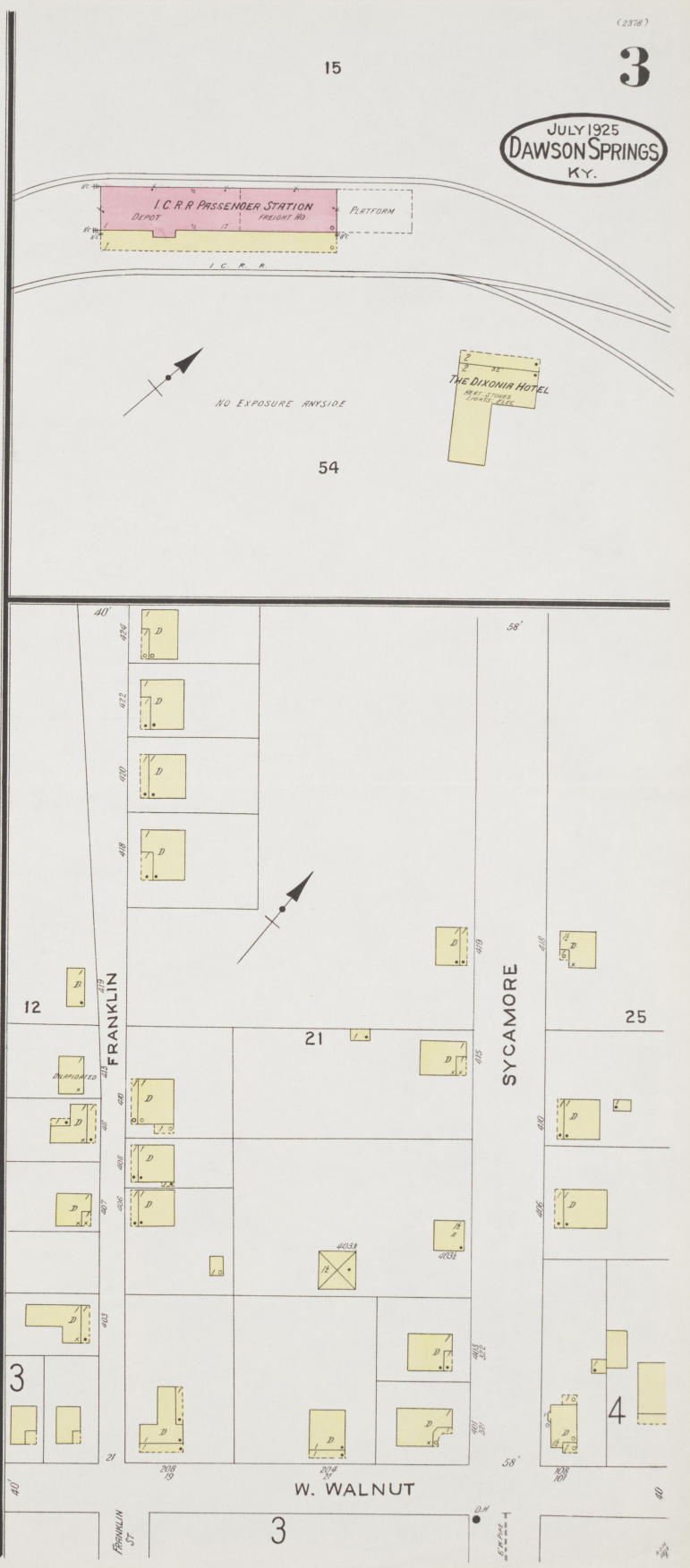
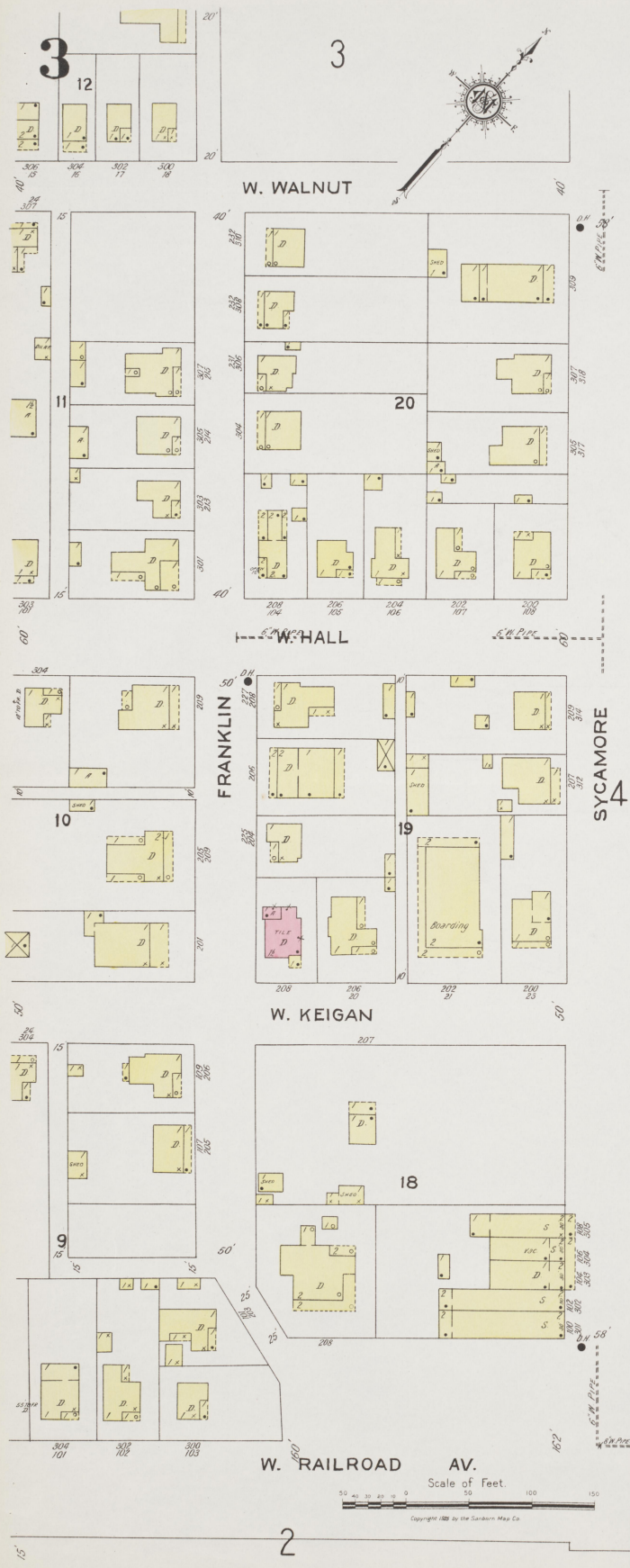
2ND MINERAL

1ST MINERAL (POPLAR)

N.O. EXP. 4040 E

Scale of Feet.

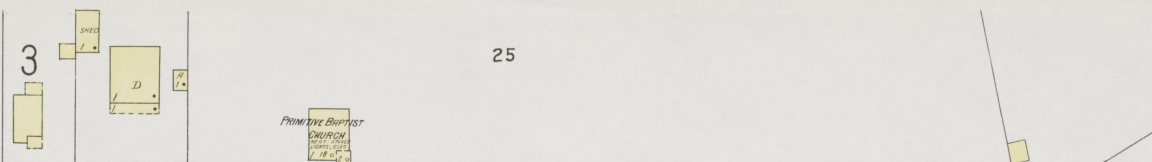
Copyright 1925 by the Sanborn Map Co.



4

25

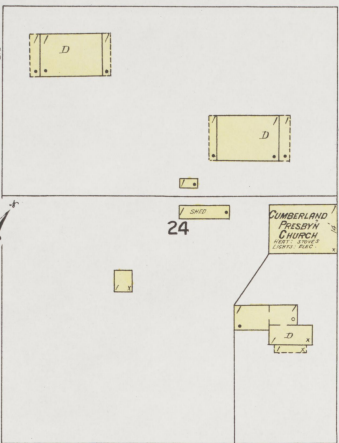
4



W. WALNUT

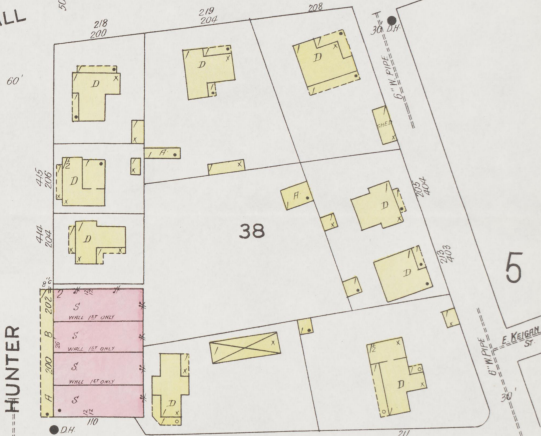
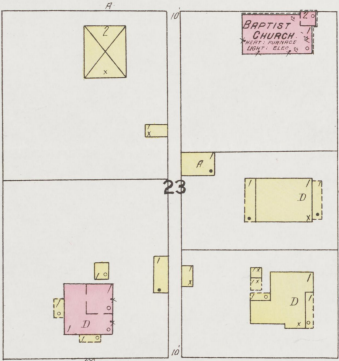
E. WALNUT

JULY 1925
DAWSON SPRINGS
KY.



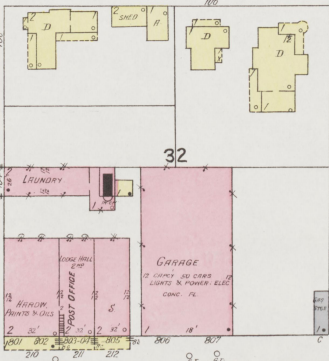
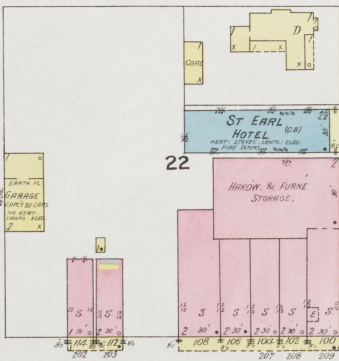
W. HALL

E. HALL



W. KEIGAN

E. KEIGAN



W. RAILROAD AV.

E. RAILROAD AV.

59

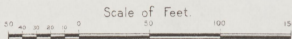
W. RAILROAD AV.

E. RAILROAD AV.

AV.

MADISONVILLE RD.

RD.



Copyright 1925 by The Standard Map Co.

2

5

5

48

JULY 1925
DAWSON SPRINGS
KY.



Copyright 1925 by the Sanborn Map Co.

Scale of Feet