

copy 1



The LSU Game

STOLL FIELD • OCT. 20, 1956
 KENTUCKY OFFICIAL PROGRAM - 25¢

We're Rootin' for you Kentucky Wildcats!

Begley's

**The Begley Drug Company
Three Stores In Lexington:**

- 1198 NORTH LIMESTONE
- 878 EAST HIGH STREET
- 404 SOUTHERN U PASS

**SERVING
THE BEST IN DRUG STORE NEEDS**

**We Also Serve Central and Eastern Kentucky
With Stores In:**

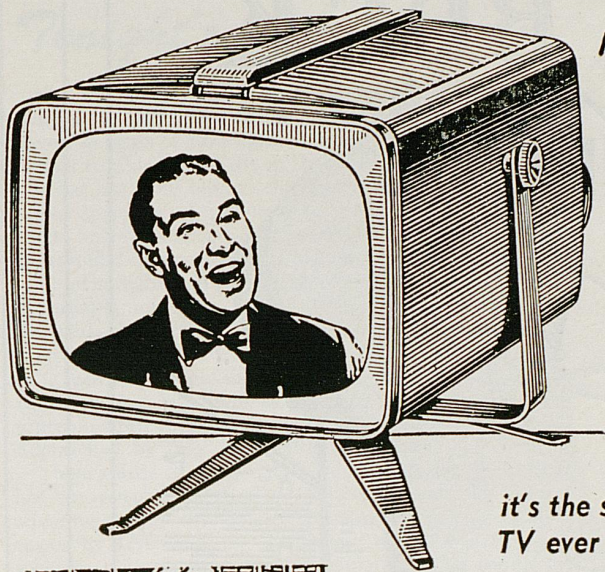
LONDON
RICHMOND
SOMERSET
MT. STERLING
DANVILLE
SHELBYVILLE

CORBIN
STANFORD
IRVINE
McKEE
CYNTHIANA
WINCHESTER

**"36 Years of Reliable Drug Service"
"You're Always Welcome At Begley's"**

A new achievement in Television Luxury

new **RCA VICTOR**
"Personal" TV



YOU'VE GOT TO SEE IT, lift it, try it . . . to believe it! You get famous RCA Victor performance in a set only 9½" wide, 8⅛" high (without removable stand), 12⅞" long!

Handy telescoping antenna helps bring you a clear, sharp, steady picture. Trim modern cabinet in ebony, red, gray or ivory textured finishes.

it's the smartest, smallest TV ever built!

Only **\$125.00**



Watch TV in your own room!

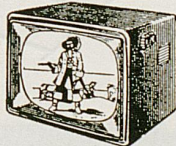


Children "go quietly" with the "Personal."



Take it to the office!

The Dixon. 261 sq. in. viewable "Living Image" picture. Ebony finish; maroon or lamed oak grained finishes extra. Model 21T715. **\$229.95**



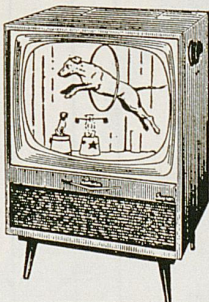
The Allen. Huge 329 sq. in. viewable "Living Image" picture. Ebony finish; mahogany grained or lamed oak grained finishes extra. Model 24T727. **\$279.95**



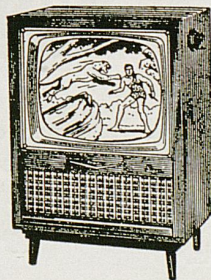
The Ranstead Deluxe. It swivels! 261 sq. in. viewable area. 3 speakers! 3 finishes: mahogany; birch; blond tropical hardwood with walnut trim. Model 21D748.



\$379.50

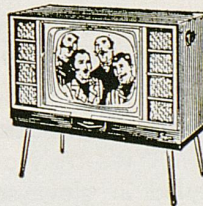


The Eaton. 261 sq. in. viewable "Living Image" picture. Ebony, mahogany grained or lamed oak grained finishes. Model 21T735. **\$279.95**



The Enfield. It swivels! 261 sq. in. viewable area. Mahogany grained finish. Model 21T738.

\$309.95



The Raeburn. 261 sq. in. viewable area. Mahogany grained, walnut grained with blond tropical hardwood or lamed oak grained finishes. Model 21T741. **\$359.95**



The Endicott Deluxe. 329 sq. in. viewable area. Finished in blond tropical hardwood with natural walnut. Model 24D758.

\$419.50

669 SOUTH BROADWAY
LEXINGTON, KY.
PHONE 2-6886

Sterling
INC.
FAMOUS FOR FAMOUS BRANDS

TELEVISION—RADIOS
HIFI RECORDS
HIFI PHONOGRAPHS
APPLIANCES

DIRTY BUCK

BY

WINTHROP



"the WILDCAT" by **WINTHROP** SHOES

It's the shoe "most likely to succeed"

Year after year . . . class after class . . . freshmen and grads agree Winthrop's Dirty Buck is a must in well-balanced campus wardrobes . . . it's truly a part of campus life. 'The Wildcat' is carefully styled in glove soft creamy buck with sturdy long-wearing red rubber soles and heels.

10.95

Be a Wildcat Booster First, Last and Always

PURCELL'S

MEN'S SHOES MAIN FLOOR

Tonight's Game . . .

You can throw that form sheet on past performances away well before the opening kickoff tonight when the Bayou Bengals of Louisiana State square off against Kentucky's troubled Wildcats in their seventh series meeting.

What has gone before—this hectic young season and in games gone by in previous campaigns—will be just so much ancient history and worthless as a yardstick of background information on which to measure the outcome of tonight's all-important clash.

Perhaps more than in any of the other six times these two clubs have faced each other, the current renewal is looked upon by both the visiting Tigers and Kentucky as a "must" in their season success plans and the probability is that both will be "pulling out all stops" in a supreme effort to get back on the victory road after being sidetracked by very formidable opponents.

There's little in the series history to indicate that either has any psychological edge. Kentucky owns the current advantage with three wins standing off a pair of successes by LSU and one deadlock (1953), which would seem to give the Tigers the talking point of trying for the "evener." On the other hand, Coach Blanton Collier and the Wildcats are still smarting over the humiliating 19-7 upset inflicted by a fired-up Louisiana State crew in the season opener at Baton Rouge a little over a year ago and will have that as their incentive.

A lot of similarity exists in the season records of the two teams this year and the background behind these records. LSU has been slapped down to three straight defeats by toughies Texas A & M, Rice and Georgia Tech. Kentucky has had its ups and downs in tackling an equally difficult slate—dropping decisions to Tech and Ole

KENTUCKY

"WILDCATS"

VERSUS

L. S. U.

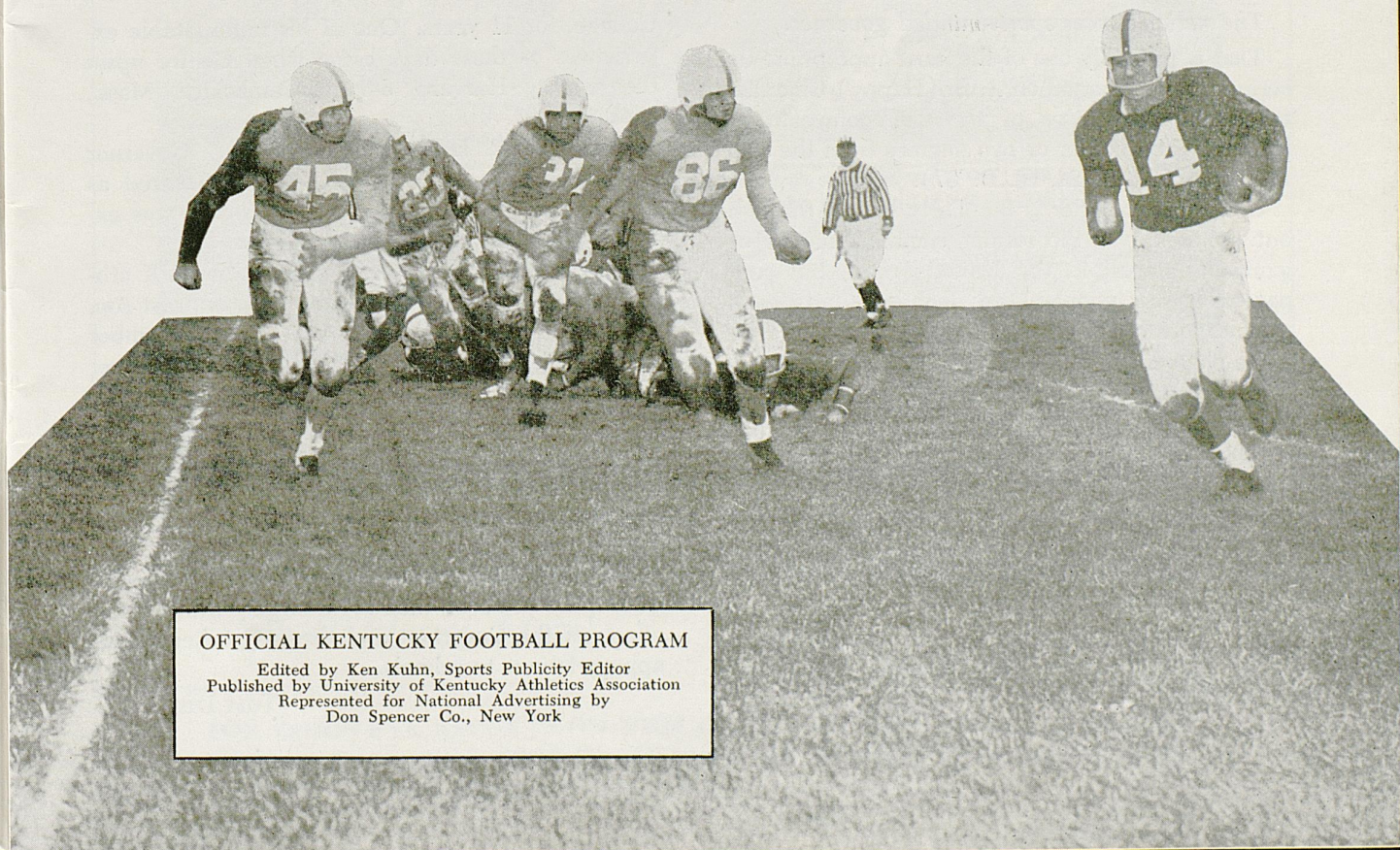
"TIGERS"

October 20, 1956

STOLL FIELD

Miss, kavoing Florida and being outpointed by Auburn. Both clubs have been plagued with numerous injuries to key personnel, but are expected to be better off this week than in some time.

Coach Paul Dietzel, a former UK grid aide (1951-52), lost only four starters and, with many of his injured men now ready, could be prepared to again upset the dope bucket which says Kentucky should rank a scant favorite.



OFFICIAL KENTUCKY FOOTBALL PROGRAM

Edited by Ken Kuhn, Sports Publicity Editor
Published by University of Kentucky Athletics Association
Represented for National Advertising by
Don Spencer Co., New York



As coach with Centre's Southern Champions, 1924

THE HONORABLE
Albert B. Chandler
 GOVERNOR OF KENTUCKY



As Kentucky's Chief Executive, 1956

The nation's most sports-minded governor.

That is probably one of the most appropriate descriptions ever tagged on A. B. (Happy) Chandler, twice chief executive of the Commonwealth of Kentucky and holder of two degrees from the state university (LL.B. '24, LL.D. '37).

Governor Chandler is familiarly known throughout the world as the former commissioner of organized baseball in the United States, but comparatively few people know that his sports background goes back even further.

He played baseball for the Grafton (N. D.) team of the Red River Valley League, between terms at Transylvania College. Following graduation, Happy entered Harvard Law School and, even in these busy days, found time to tutor football and basketball teams at Wellsley Hills (Mass.) High School.

Later he enrolled at UK and, in between law classes, coached basketball at Versailles High. He was also coach of the 1922 UK girls' basketball team.

The energetic young man somehow found time to be a scout and assistant football coach at Centre

College, for 11 years. One of his unforgettable experiences of these days came when Centre upset then-mighty Harvard, 6-0, at Cambridge, Mass., back in 1921.

Many years later, after becoming Governor (1935) and U. S. Senator (1939), he served as Baseball Commissioner for six years and was extremely popular with the ballplayers.

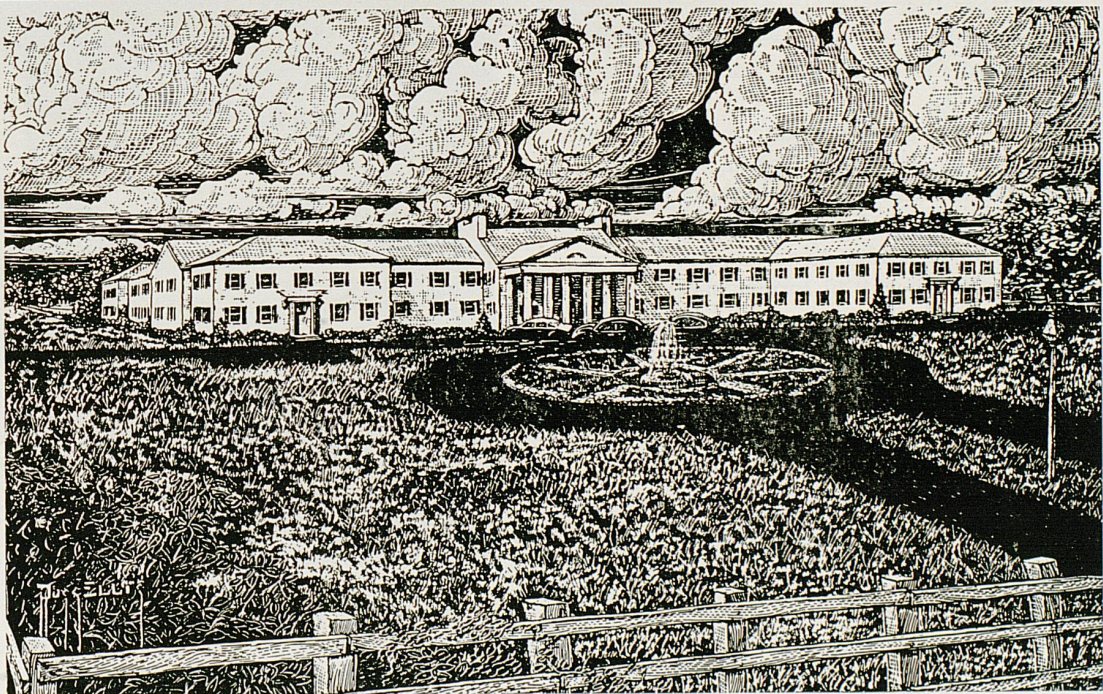
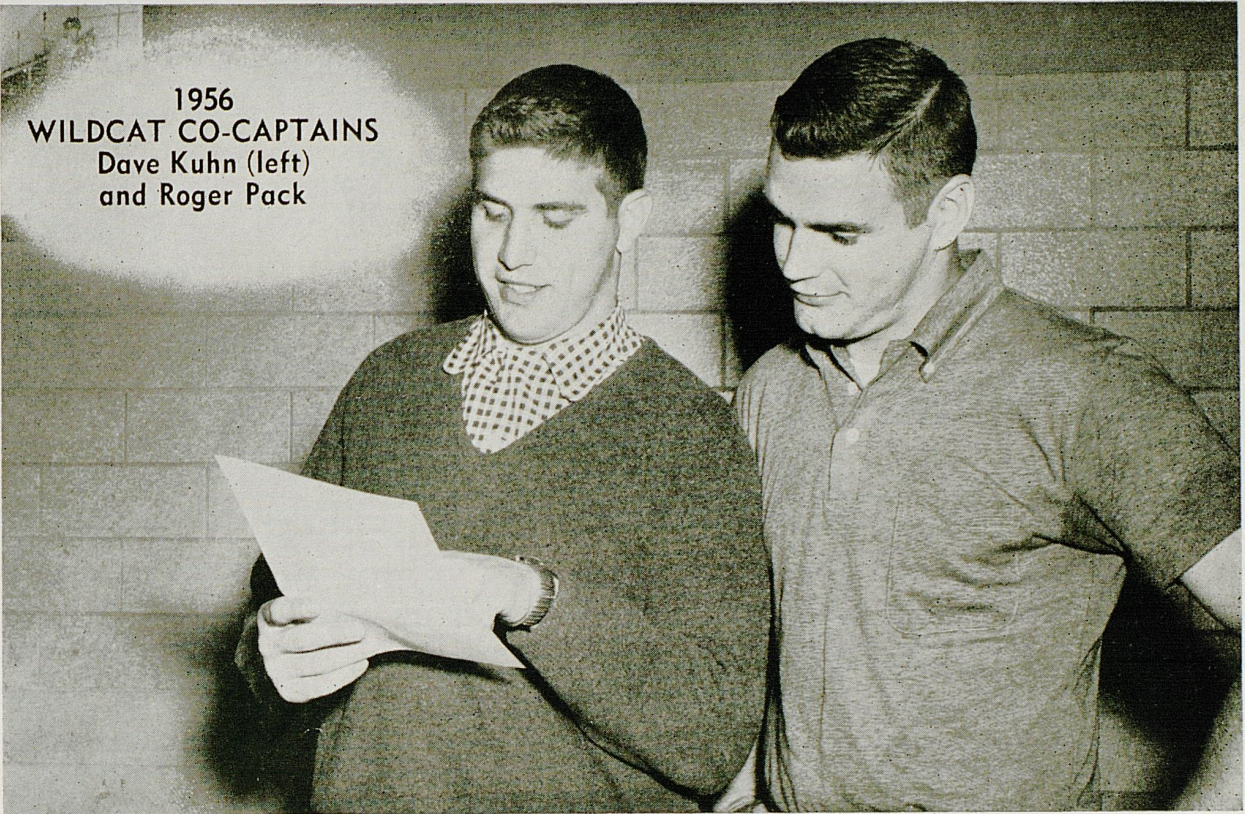
Governor Chandler has been attending UK athletic events for nearly 40 years. His youngest son, Dan, now in the U. S. Army, was a recent member of the Kentucky basketball squad. Ben, his other son, is also an alumnus of UK.

In addition, he has backed the University in other ways. Spearheaded by Governor Chandler, the 1956 Assembly appropriated \$5,000,000 to start construction of the new UK Medical Center. Another \$6,000,000 is pledged.

Educational allotments throughout the Commonwealth are at an all-time high, largely through the efforts of the Governor, and the recent Legislative appropriations to schools.

—TOM DISKIN

1956
WILDCAT CO-CAPTAINS
Dave Kuhn (left)
and Roger Pack



Campbell House Hotel

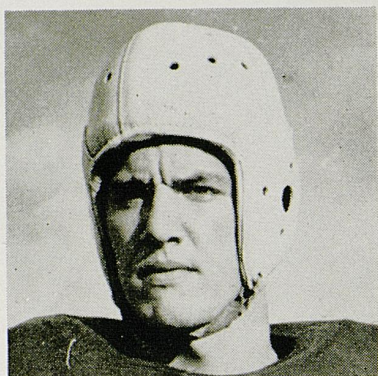
Free Parking
Air Conditioned

U. S. 68
Swimming Pool

Golf

FOR COMPLETE REPORTS ON THIS GAME AND OTHERS BEING PLAYED
TODAY, READ THE SPORTS SECTION OF SUNDAY HERALD-LEADER

"MYSTERY WILDCATS"



Known familiarly to fans in three major sports by a babyish-sounding nickname . . . All-Conference selection in football and basketball and a star twirler for the baseball club . . . Achieved most recognition in cage sport, but could easily have become great on the gridiron had he chosen to apply himself completely to football . . . Won varsity starting assignment in second game as freshman . . . Elected to first political office ever aspired for and now seeks votes in November election to become Kentucky congressman.



Got his start in the coaching profession as a Kentucky grid aide after concluding his collegiate career with the Wildcats in the 1951 Sugar Bowl game . . . Played defensive end for UK and earned honor as a member of the All-SEC Sophomore Team . . . After serving on the Kentucky staff one season, he moved on to Vanderbilt and then shifted to tonight's opponent in 1953 . . . Now serves in capacity of chief assistant to Coach Dietzel of LSU.

For identification of tonight's "Mystery Wildcats," see footnote on page 48.

A SALUTE TO COACH PAUL DIETZEL

Dedicated coach of the rival Louisiana State football team that he is, Paul Dietzel cannot be expected to favor any leanings he might have toward the Blue Grass and Kentucky's state university.

However, the popular young mentor of the Tigers, now in his second year at the helm as a head coach, is no stranger in these parts.

For two seasons, Coach Dietzel served the University of Kentucky as an assistant on the football coaching staff of former mentor Paul Bryant. He joined the Sugar Bowl championship squad for spring practice preceding the 1951 season and stayed on until the end of the 1952 campaign when he returned to West Point to take over as offensive line coach. The '51 Wildcats enjoyed a tremendous season, capped off by victory over TCU in the Cotton Bowl, while the 1952 unit was forced to settle for a 5-4-2 record while in the process of rebuilding.

The former B-29 pilot was regarded then as a tireless football laborer with great potential as a coach. He gained his apprenticeship in the football coaching profession under three of the game's top strategists—Earl (Red) Blaik of Army, Sid Gillman of Cincinnati and Paul Bryant of Kentucky.

Dietzel was a candidate for the Wildcat coaching job when Bryant moved to Texas A & M in 1954 and made a successful bid the following year for the LSU position. Although the Tigers won only three games in 1955 (one of them a 19-7 upset of UK), everyone in the Bayou country has become impressed with the youthful grid boss.

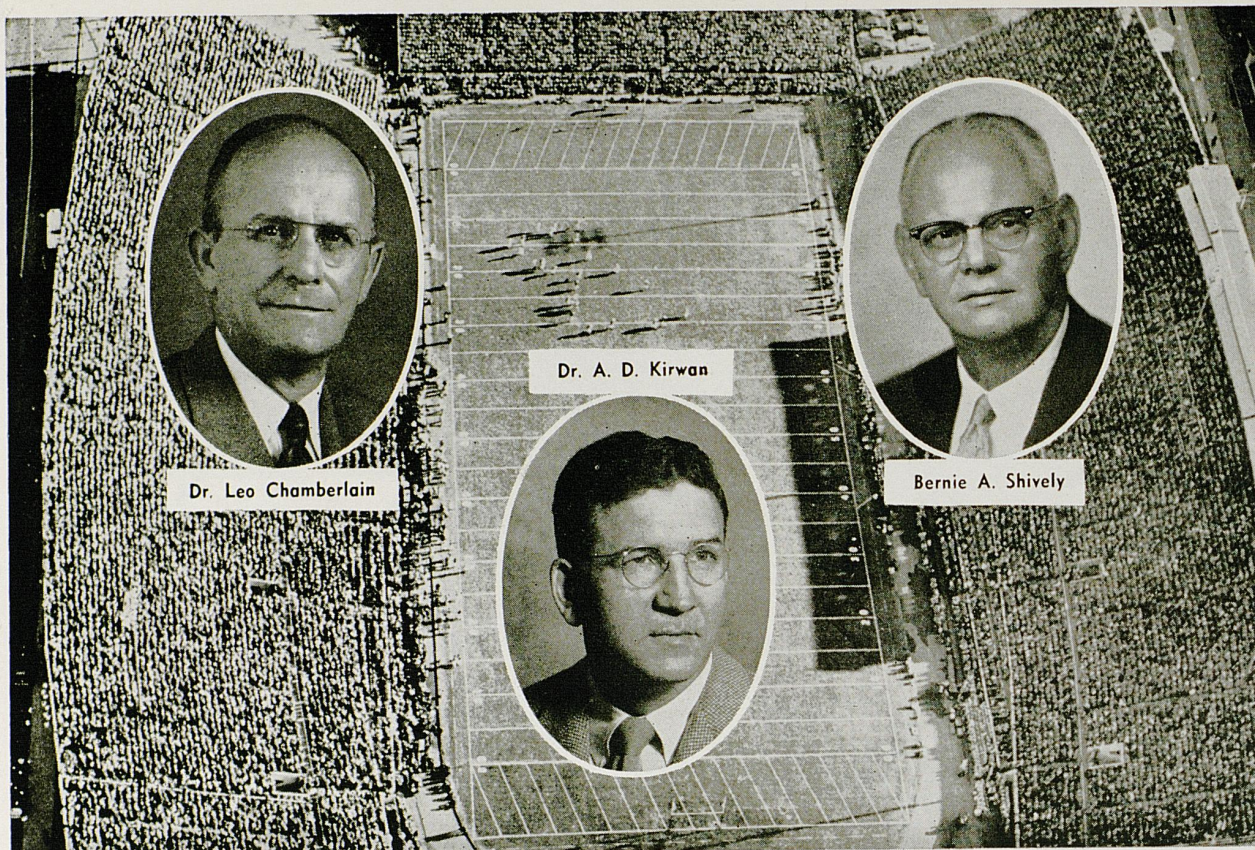




"The Kentucky Story"

JUST A SHORT 17 years ago, Frank Graves Dickey was a comparatively "obscure" teacher in the Lexington city school system who had little if any vision of attaining the enviable position he acceded to on September 1 of this year—fifth president of the State of Kentucky's largest institution of higher learning. Today, as the youngest chief executive in University of Kentucky's 91-year history, Dr. Dickey brings an outstanding and refreshing approach to the many challenging problems of one of the nation's fastest growing educational institutions. Born in Wagoner, Oklahoma, he received almost all of his education in Lexington and graduated from Henry Clay High School. His A.B. degree with highest honors came

from Transylvania College while both the Master of Arts and Doctor of Education degrees were awarded by U. of K. in 1942 and 1947, respectively. He also has taken post-doctoral work at Harvard and served in the Army. In 1949, he was chosen to head U.K.'s Bureau of School Service and six months later was appointed as Dean of the College of Education, the post he held until his election to the presidency. Dr. Dickey claims little connection with athletics as a participant since junior high days, but classes himself as an avid sports enthusiast. He is on record as strongly favoring the continuance of University athletics on their current high plane and in balance with the academic program.



Dr. Leo Chamberlain

Dr. A. D. Kirwan

Bernie A. Shively

Athletics at Kentucky

Kentucky's athletics program is organized under the Department of Athletics and a corporation known as the University of Kentucky Athletics Association.

A firm believer in sports and sportsmanship, Dr. Leo M. Chamberlain, Vice-President of the University, has general supervision over the Department and also serves as vice chairman of the Board of Directors of the Association.

Former UK football player and one-time Wildcat coach, Dr. A. D. Kirwan, acts as secretary to the Association. He also is the school's faculty representative to the Southeastern Conference.

Supervising the steady growth and balanced development of one of the nation's top athletic programs as Director of Athletics is Bernie A. Shively. The former Illinois All-America footballer has guided the development of Kentucky as a nationally-respected power in major sports since 1938 and gained wide prestige through a fair-minded approach to many problems. Under his direction, the seating capacity of McLean Stadium has been doubled, powerful lighting equipment installed to

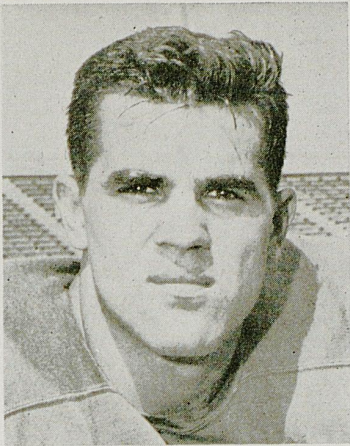
bring night football into new popularity, mammoth Memorial Coliseum constructed, new practice facilities and two modern living units (Wildcat Manor and Kitten Lodge) provided for the grid-iron teams.

Maintaining over-all control of U.K. athletics affairs is the Board of Directors of the Athletics Association, composed of the President of the University and 10 other directors appointed by him, including five members of the faculty of the University, the president of the Student Government Association, an alumnus of the school, a member of the U.K. Board of Trustees, and two others. Frank D. Peterson, University Vice President of Business Administration, serves the board as treasurer.

The current Board of Directors consists of:

Dr. Frank G. Dickey,
Chairman
Dr. A. D. Kirwan,
Secretary
Dr. Ralph Angelucci
Thomas H. Ballantine
George K. Brady
Aubrey J. Brown
Thomas Clark
Lyman Ginger

Dr. Leo M. Chamberlain,
Vice Chairman
Richard K. Lehman
(Student)
Robert Hobson
Alfred L. Crabb
Paul Oberst
H. D. Palmore
D. V. Terrell
William A. Tolman

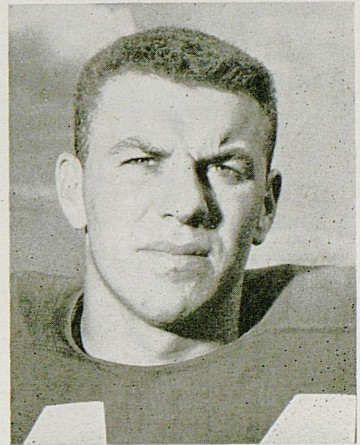


LOU MICHAELS
Junior — Tackle
Swoyerville, Pa.

When usually-placid professional scouts abandon their reserved composure to drool over an "interior" lineman—and a sophomore to boot—it's a pretty good tipoff that they have spotted a potentially great prospect. Such is the case of UK's great tackle Lou Michaels. With only one season of varsity play under his belt, the mature young giant from Swoyerville, Pa., is already being tabbed by the experts as a potential All-American. At 6-2 and 230 pounds, Michaels has the physical equipment to go along with great ability, strength, speed, agility and a keen mind—attributes of a great football player—and Coach Collier classes Lou as "one of the best I have seen in collegiate ranks."

Before the 1955 season opened, Coach Collier had grave doubts that his fullback situation was as sound as it should be and wondered if big Bob Dougherty, after a three-year absence from collegiate competition, could get the job done. The smiling Irishman from Bellevue, Ky., every inch the battering-ram type of fullback that is a coach's dream, had already been picked by the Los Angeles Rams for a future in pro ball. But he remained the big question mark nevertheless. Subsequent action by Mr. Dougherty, as one of the leading ground gainers in the conference and outstanding defense man, proved all worries needless, and served notice that the 212-pound lad will be a serious force to be reckoned with in '56 as he goes after All-Conference honors.

BOB DOUGHERTY
Senior — Fullback
Bellevue, Ky.



OFFICIAL WATCH FOR



U. S. OLYMPIC
COMMITTEE
1948-1952-1956



NAT'L AERONAUTIC
ASSN.



NAT'L COLLEGIATE
ATHLETIC ASSN.
CHAMPIONSHIPS



AMERICAN AUTO-
MOBILE ASSN.



NATIONAL SKI
ASSN.



AMERICAN
POWERBOAT
ASSN.



AAU
CHAMPIONSHIPS



NATIONAL HORSE
SHOW ASSN.

and many others

Longines

THE WORLD'S MOST HONORED WATCH

Official Watch for the

KENTUCKY GAMES

Longines, first watch of sport, is recognized as official for timing world records and international events by all international sports and contest associations. Every Longines watch, for whatever its use, is made to be the best of its kind. For yourself, as a gift, no other name on a watch means so much as Longines, the world's most honored watch.



10 WORLD'S FAIR
GRAND PRIZES
28 GOLD MEDALS



Longines watches to cope with outdoor life—fully protected against all common watch hazards. For her—Longines Skylark "A.P." For him—Longines Sportsman "D", each \$89.50. Other Longines watches from \$71.50.

Longines-Wittnauer Watch Company



KENTUCKY'S COACHING STAFF. Head Coach Blanton Collier (center, seated) goes over the rugged 1956 schedule of the Wildcats with aides. In back, from the left are Freshman Coach John North; Bill Arnsperger, offensive line coach; Ed Rutledge, freshman backfield coach; and Dominic Fucci, defensive backfield coach. Seated are Charles Bradshaw, end coach; Matt Lair, defensive line coach; and Ermal Allen, backfield coach.

THE WILDCATS' 1956 SCHEDULE

Date	Opponent	UK	Opp.	Date	Opponent	Place
Sept. 22	*Georgia Tech, Lexington	6	14	Oct. 27	*Georgia	Athens
Sept. 29	*Ole Miss, Memphis	7	37	Nov. 3	Maryland	College Park
Oct. 6	*Florida, Gainesville	17	8	Nov. 10	*Vanderbilt	Lexington (H)
Oct. 13	*Auburn, Lexington	0	13	Nov. 17	Xavier	Lexington
Oct. 20	*L. S. U. Lexington (N)			Nov. 24	*Tennessee	Knoxville

* SEC GAME. (N) Night Game. (H) Homecoming. Home games start at 2 p.m. and 8 p.m.

Recommended by
Duncan Hines

The Golden Horseshoe

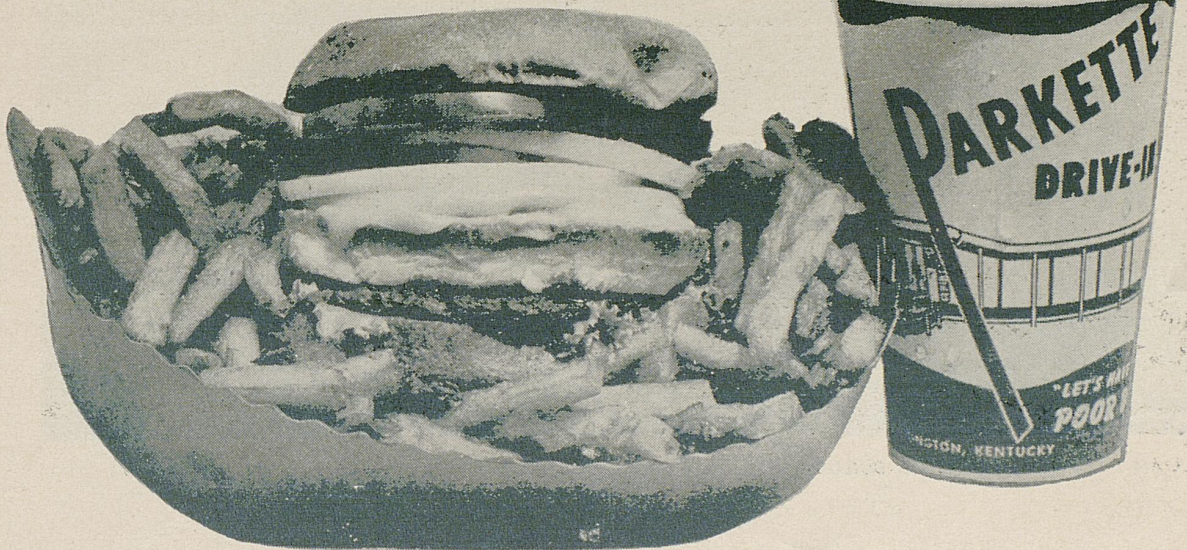
Nationally Famous . . .
Lexington's Finest
Colonel Harry Ware
at the Organ and Piano

Approved Restaurant

SCORES OVER STOLL FIELD PUBLIC-ADDRESS SYSTEM COME TO YOU THROUGH THE COURTESY OF THE LEXINGTON NEWSPAPERS

Try
Parkette's
Famous
"Poor Boy"

"Before
And After
The Game
Or Show,
The Parkette's
The Place
To Go"



19 OTHER
DELICIOUS
SANDWICHES !

CHICKEN OR
JUMBO SHRIMP
IN THE BOX !

GIANT
MILK
SHAKES !

NOW THERE ARE "2"
Parkette Drive Inns

No. 1—Northeast Beltline On Bypass 25—Phone 4-8723

No. 2—Off Beltline Georgetown Rd. U.S. 25—Phone 2-8617



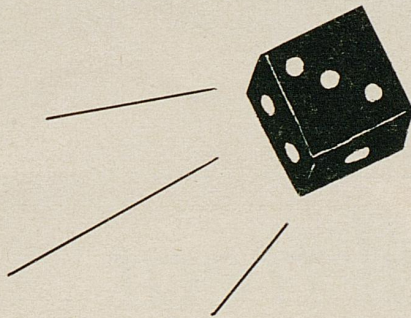
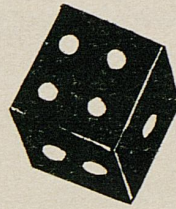
WILLIAM S. TAYLOR EDUCATION BUILDING

COLLEGE OF Education

Opportunities in education as a career are expanding. More good teachers are needed at all levels. The College of Education at the University of Kentucky was established to provide for the education of teachers, administrators, and other school personnel. Here one may be trained for teaching in the elementary school, junior or senior high school, or college. Appropriate curriculums and degrees are offered for all kinds of teaching, as well as for elementary and high school principals, city and county superintendents, supervisors, critic teachers, attendance officers, and teacher-librarians. UK education students have observation and student teaching in the University School and in the schools of nearby communities.

You May Be a Sports Fan...

**BUT DON'T BE
A GAMBLER**



**When
Servicing
Your Car!**

**LET ONLY CHEVROLET TRAINED MECHANICS
DO THE WORK ON YOUR CAR.**

The L. R. Cooke Chevrolet Co.

Phone: 5-2110

180 E. High St.

Closed Sundays

SERVING LEXINGTON OVER 37 YEARS

Bayham's
shoes of distinction

FRENCH SHRINER

MEN'S *Extra Quality* SHOES

KEYED TO COMFORT

Most Styles **\$19.95 to \$24.95**

Other Stores in

Louisville—Paducah—Nashville
Cincinnati—Orlando, Fla.



Quality Shoes
for
MEN—WOMEN
CHILDREN

have a real treat . . .

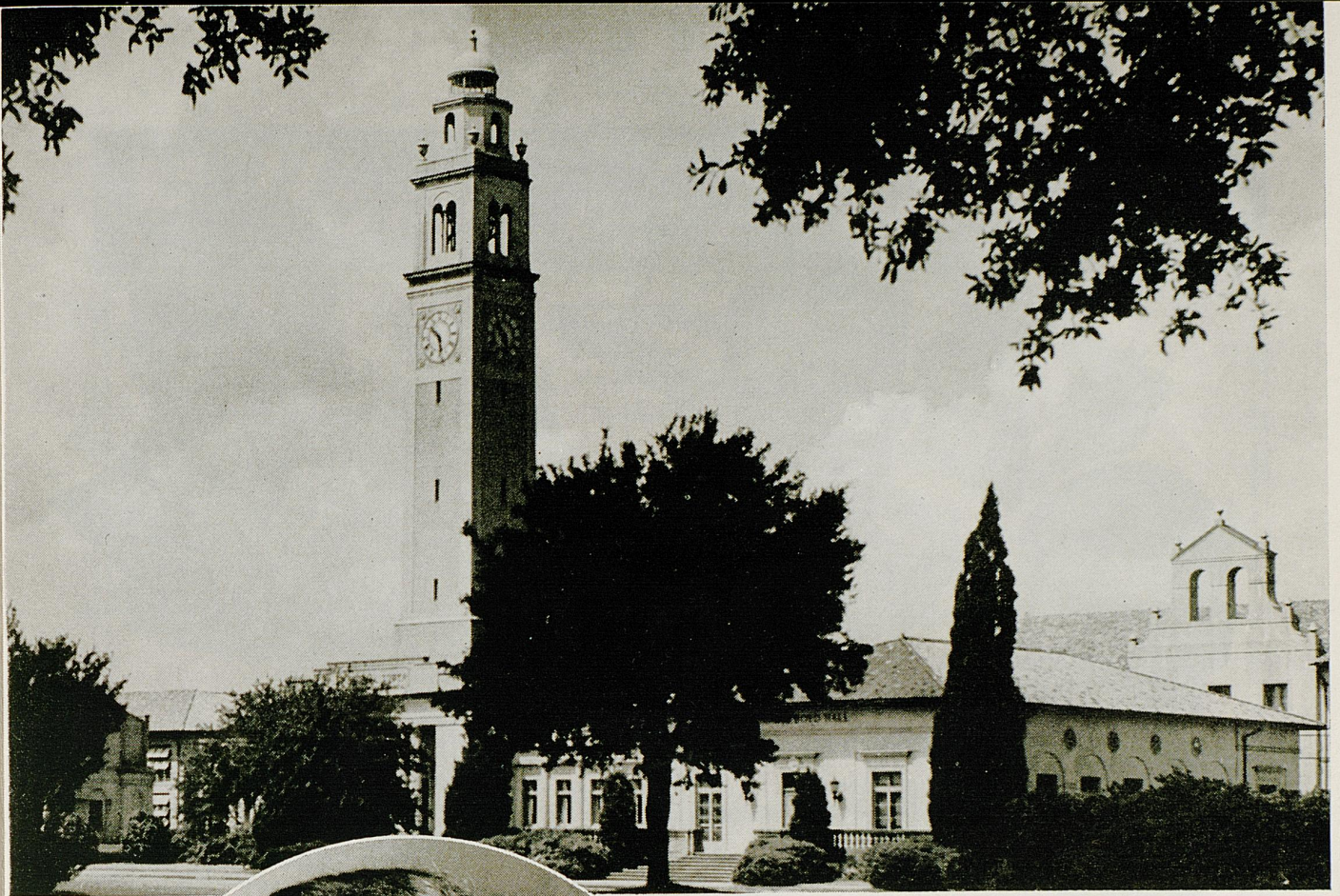
ARMOUR ★

FRANKS

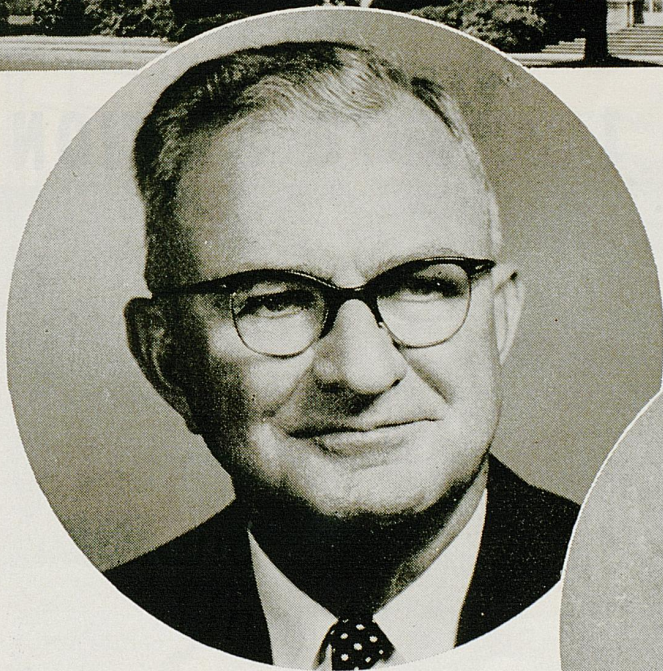
with the
"OPEN-FIRE"
FLAVOR



SCORES OVER STOLL FIELD PUBLIC-ADDRESS SYSTEM COME TO
YOU THROUGH THE COURTESY OF THE LEXINGTON NEWSPAPERS



THOMAS D. BOYD HALL

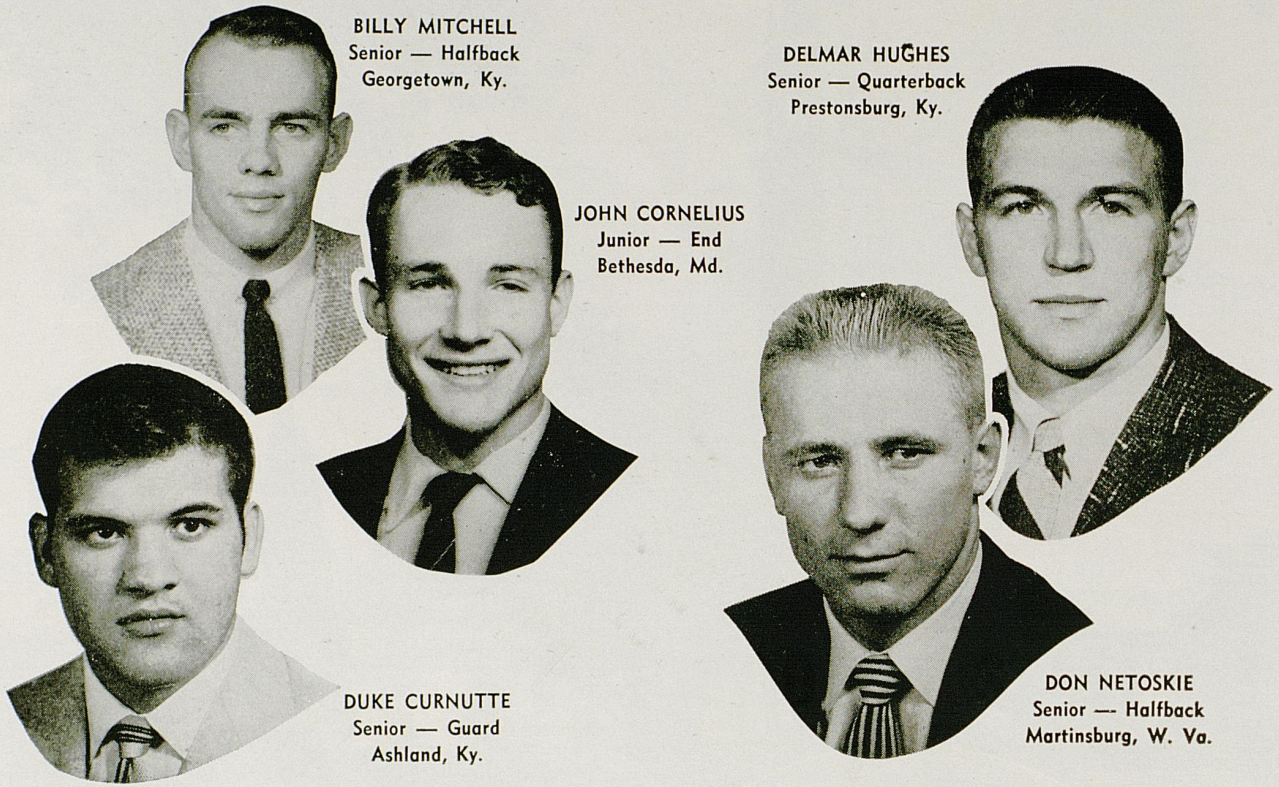


TROY H. MIDDLETON, President



JIM CORBETT, Director of Athletics

*Louisiana
State University*



BILLY MITCHELL
Senior — Halfback
Georgetown, Ky.

DELMAR HUGHES
Senior — Quarterback
Prestonsburg, Ky.

JOHN CORNELIUS
Junior — End
Bethesda, Md.

DUKE CURNUTTE
Senior — Guard
Ashland, Ky.

DON NETOSKIE
Senior — Halfback
Martinsburg, W. Va.

LEXINGTON'S NO. 1 SPORTS STATIONS

See Coach Collier ...
**EACH SUNDAY, 9.00 P. M., WITH FILM
 AND COMMENTS ON ALL UK GAMES**

FOOTBALL GAMES! See the top games of the season on WLEX-TV! Tune to Channel 18 for the clearest, sharpest picture in central Kentucky!

WLEX-TV Channel 18 • Lexington
 NBC ABC CBS

Lexington's Pioneer TV Station

Hear Coach Collier
 TUESDAYS AND FRIDAYS, 6:30 P. M.

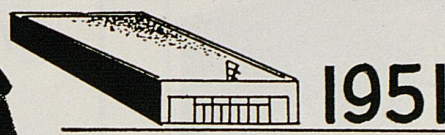
WLEX
 1300 ON DIAL

★

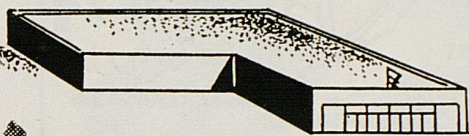
For an accurate, colorful description of **ALL UK GAMES** tune to WLEX radio, Lexington's only independent, non-directional radio station!

SCORES OVER STOLL FIELD PUBLIC-ADDRESS SYSTEM COME TO YOU THROUGH THE COURTESY OF THE LEXINGTON NEWSPAPERS

5 Years of Progress



1951

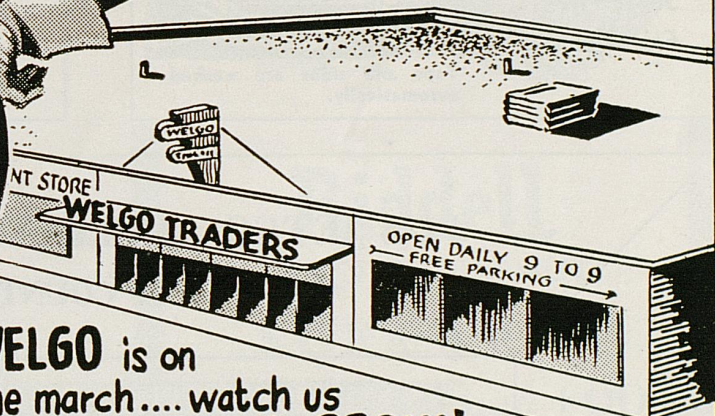


1954

and now - **1956**
BIGGER and BETTER
WELGO TRADERS,
at your service!

WELGO TRADERS
← FREE PARKING →

★
SHOPPING CENTER
for the entire
FAMILY!
★



WELGO is on
the march.... watch us
GROW! GROW! GROW!

Shop
WELGO
for
COLLEGE QUALITY
at
Kindergarten
PRICES!

KENTUCKY'S LARGEST SELF-SERVICE DEPARTMENT STORE!

FREE PARKING **OPEN 9 TO 9**

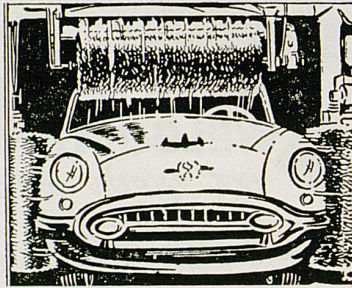
WELGO TRADERS
WINCHESTER-ROAD
SATISFACTION GUARANTEED WITH EVERY PURCHASE



JIMMY BUTTS
Minit Auto Wash
 Middle of Midland



Tires are cleaned snow white or blacked.



Tops and sides are washed automatically.

**Slickest,
 Quickest
 C A R
 W A S H
 In Town—**

*Where Our
 Customers
 Send Their
 Friends!*

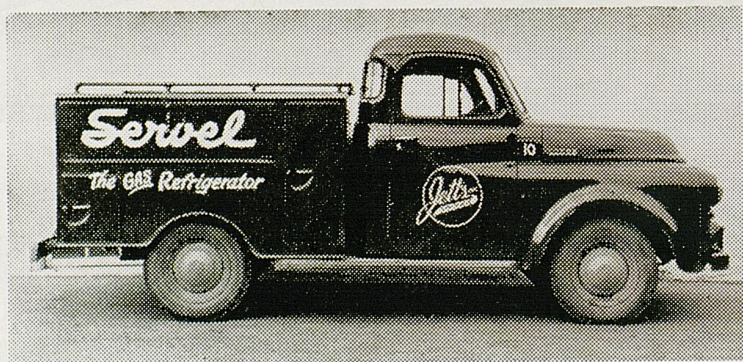
*Enjoy the Game...
 Enjoy the Finest...*



There's A Dixie
 Dealer Near
 You.

**IT'S JETCO APPLIANCE SERVICE
 THAT COUNTS**

Call
 5-0330
 For
 Appliance
 Service



Call
 5-0330
 For
 Appliance
 Service

Jetco Distributors

327 E. VINE ST.

DIAL 5-0330



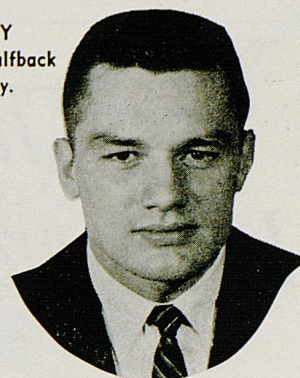
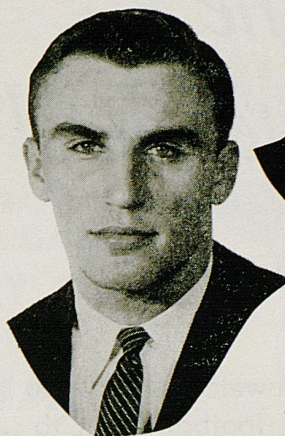
The Phoenix Hotel

"Lexington's Largest and Finest"

2 RESTAURANTS
COCKTAIL LOUNGES

Where Friends Delight To Meet

DICK MABRY
Sophomore — Halfback
Lexington, Ky.

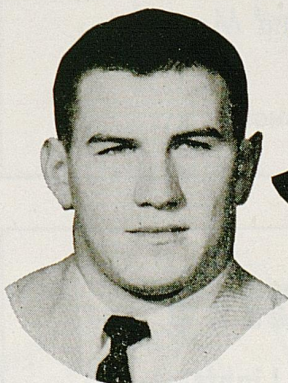
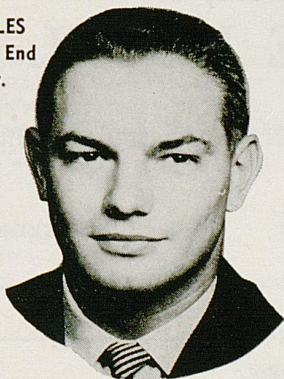


JACK GALLAGHER
Sophomore — Halfback
Cumberland, Ky.



DAVE ALLEN
Sophomore — Halfback
Hamilton, Ohio

DICK CHARLES
Sophomore — End
Murray, Ky.



BOB BENNETT
Senior — Guard
Russell, Ky.

Riddell

ATHLETIC EQUIPMENT

SAFE and SURE
BOTH HEAD and FOOT

- Safety Suspension Helmets
- Tubular Face Guards
- Football Shoes

Hunt's Athletic Goods Co., Inc.

Phone No. 104
MAYFIELD, KENTUCKY

"WE SHIP THE DAY YOU BUY"

FOR COMPLETE REPORTS ON THIS GAME AND OTHERS BEING PLAYED
TODAY, READ THE SPORTS SECTION OF SUNDAY HERALD-LEADER

The Lafayette Hotel

Extends a cordial welcome and an invitation to the football fans to meet with us after the games. Renew old friendships, greet new friends, and enjoy the spirit of good fellowship that abounds.



MacGregor[®]
**Sports
Equipment**

HUNT'S ATHLETIC GOODS CO.
Phone No. 104
MAYFIELD, KENTUCKY
A MACGREGOR DISTRIBUTOR FOR THIRTY-FIVE YEARS

We Invite You To Stay at
TOWN HOUSE MOTEL

Lexington's Newest and Most Modern Air-Conditioned Motel

S. LIME AT ROSE

PHONE 3-5274

LEXINGTON, KY.

Taylor Tire Company

Incorporated

**Tires — Batteries — Brakes — Clutch — Starter — Lights
Ignition — Wheel Alignment — Sales and Service**

24 Hour  Service

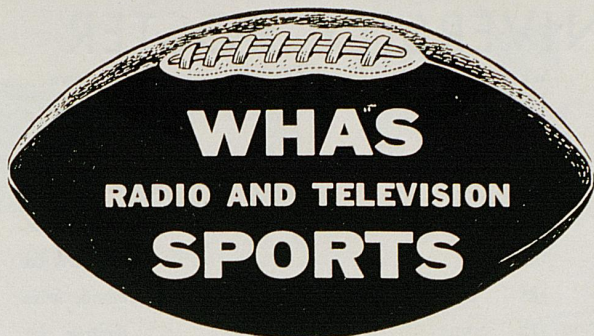
"BUDGET TERMS"

Vine at Southeastern

Phone 2-7127

Lexington, Ky.

SCORES OVER STOLL FIELD PUBLIC-ADDRESS SYSTEM COME TO
YOU THROUGH THE COURTESY OF THE LEXINGTON NEWSPAPERS

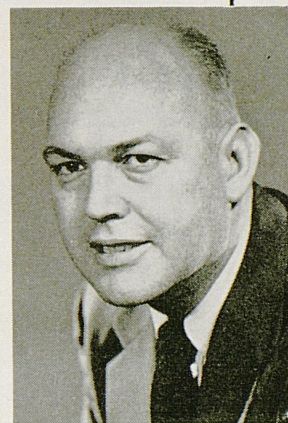


U. of K.
FOOTBALL
•
EVERY GAME
PLAY BY PLAY
ON
WHAS
RADIO
840



WHAS Sports Director Jimmy Finegan

Long-time Kentuckiana sports authority Jimmy Finegan began his career with the *Louisville Herald-Post* and *Louisville Times*. He joined the WHAS Sports Department in 1947, and just a year later became Sports Director. Jimmy's voice is familiar to radio listeners for his popular "Report on Sports" and "Kentuckiana Sports" on WHAS.



WHAS Sportscaster George Walsh

Sportscaster George Walsh is the area's leading play-by-play announcer, famous for his descriptions of outstanding local baseball, basketball and football games. Widely known as the originator of the National Football League's "Game of the Week" on TV, George is seen nightly on WHAS-TV's "Sportraits."

Other Sports Features on WHAS-Radio and TV

RADIO

REPORT ON SPORTS

5:15 p.m. daily

KENTUCKIANA SPORTS

10:15 p.m. daily

FOOTBALL SCOREBOARD

5:45 p.m. Saturday

TV — Channel 11

SPORTRAITS

10:45 p.m. daily

PRO FOOTBALL

Sunday afternoon

WRESTLING

10:55 p.m. Tuesday

FILM BOXING

11:00 p.m. Monday

BOWLING

11:00 p.m. Wednesday

Kentucky Basketball
This winter, George Walsh will broadcast forty-six outstanding basketball games by leading Kentucky teams — on WHAS-Radio!

LOUISIANA STATE UNIVERSITY ROSTER

No.	Name	Class	Pos.	Age	Ht.	Wt.	Ltrs.	Hometown
10	Win Turner, Jr.	QB		20	5'10"	165	2	Baton Rouge, La.
11	M. C. Reynolds, Jr.	QB		21	6'	175	1	Mansfield, La.
12	Bob Westerman	Soph.	QB	19	6'	175	0	Malvern, Ark.
16	Matt Burns, Sr.	QB		21	5'11"	175	2	Lake City, Fla.
20	Joe May, Sr.	HB		23	5'9"	165	2	Shreveport, La.
21	Olin Renfroe, Jr.	HB		20	6'	185	0	Raymond, Miss.
22	Ronnie Johnston	Soph.	HB	20	5'10"	170	0	Bastrop, La.
29	Andy Wenner, Jr.	HB		20	5'8"	170	0	Beaumont, Tex.
33	Al White, Jr.	HB		20	6'10"	172	0	Downey, Calif.
34	Jerry Johnston, Jr.	HB		20	5'10"	175	0	Waynesboro, Miss.
35	Don Kozan	Soph.	HB	18	5'9"	165	0	Baton Rouge, La.
36	J. W. Brodnax	Soph.	HB	20	6'	185	0	Bastrop, La.
37	Merle Schexnauldre	Soph.	HB	20	5'9"	180	0	Houma, La.
41	Bob DeCrosta, Jr.	FB		22	5'10"	170	0	Hudson, N. Y.
42	Jimmy Taylor, Jr.	FB		20	5'11"	200	0	Baton Rouge, La.
43	Steve Thompson, Jr.	FB		20	5'11"	189	0	Winnsboro, La.
44	Glen Porter, Jr.	FB		21	5'8"	178	0	Orange, Tex.
50	Durwood Graham, Sr.	C		23	6'	215	1	Vicksburg, Miss.
51	Don Swope, Jr.	C		26	6'	200	0	Wexford, Pa.
52	Ted Paris, Sr.	C		21	6'	205	2	Leesville, La.
53	John Langan	Soph.	C	18	6'	180	0	Carbondale, Ill.
54	Fred Wyble	Soph.	C	20	6'2"	187	0	Opelousas, La.
60	Ed Cassidy, Jr.	G		19	5'10"	190	1	Bogalusa, La.
61	John Fort	Soph.	G	19	6'	195	0	Baton Rouge, La.
62	Bob Ziegler, Sr.	G		21	6'1"	197	2	Crowley, La.
63	Mike Stupka	Soph.	G	23	6'	224	0	Westwego, La.
64	Larry Kahlden	Soph.	G	19	6'1"	205	0	Weimar, Tex.
65	Don Scully, Sr.	G		21	5'11"	183	1	St. Petersburg, Fla.
66	David McCarty	Soph.	G	18	6'2"	185	0	Rayville, La.
67	Jerry Denstorff	Soph.	G	19	5'11"	185	0	Rockport, Ind.
70	Enos Parker, Sr.	T		23	6'2"	205	3	Mobile, Ala.
71	Al Aucoin, Jr.	T		19	6'2"	200	1	Houma, La.
72	Jim Lavin, Jr.	T		21	6'5"	235	0	New Orleans, La.
73	Jack Frayer	Soph.	T	18	6'2"	187	0	Toledo, O.
74	Ray Spence	Soph.	T	19	6'3"	206	0	Shreveport, La.
75	Jules Sandras	Soph.	T	23	6'	224	0	Westwego, La.
76	Jerry Schwalb, Sr.	T		22	6'2"	205	1	Baton Rouge, La.
77	Earl Leggett, Sr.	T		22	6'3"	265	1	Jacksonville, Fla.
80	Jim Mitchell, Sr.	E		24	6'2"	195	2	Baton Rouge, La.
81	Billy Smith, Jr.	E		20	6'2"	207	1	Ruston, La.
82	John Wood, Sr.	E		21	6'2"	193	2	Lake City, Fla.
83	Jim Gardner, Jr.	E		20	6'3"	190	0	Minden, La.
84	George Fisher	Soph.	E	19	6'2"	185	0	Leesville, La.
85	Billy Hendrix	Soph.	E	20	6'	185	0	Rayville, La.
86	Bobby Lott	Soph.	E	19	5'11"	190	0	Texarkana, Ark.
87	Billy Sheehy, Jr.	E		22	6'2"	180	0	Mobile, Ala.

"THE OFFICIAL WATCH FOR TIMING THIS GAME IS LONGINES —
THE WORLD'S MOST HONORED WATCH"

REFRESH

DRINK
Coca-Cola
REG. U.S. PAT. OFF.

-
- 1 Offside
 - 2 Illegal procedure, position or substitution
 - 3 Illegal motion
 - 4 Illegal shift
 - 5 Illegal return
 - 6 Delay of game
 - 7 Personal foul
 - 8 Clipping
 - 9 Roughing the kicker
 - 10 Unsportsmanlike conduct
 - 11 Illegal use of hands and arms
 - 12 Intentional grounding
 - 13 Illegally passing or handing ball forward
 - 14 Forward pass or kick catching interference
 - 15 Ineligible receiver downfield on pass
 - 16 Ball illegally touched, kicked or batted
 - 17 Incomplete forward pass, penalty declined, no play or no score
 - 18 Crawling, helping runner or interlocked interference.
 - 19 Ball dead
 - 20 Touchdown or field goal
 - 21 Safety
 - 22 Time-out
 - 23 First down
 - 24 Ball ready for play
 - 25 Start the clock

SEE PAGE 28 FOR PENALTIES



COCA-COLA BOTTLING WORKS OF LEXINGTON, KENTUCKY

Live **M**odern, Boy...Smoke **L&M**!



LOUISIANA STATE

PROBABLE STARTING LINEUP

No.	Name	Position
87	BILLY SHEEHY	LE
71	ALVIN AUCOIN	LT
65	DON SCULLY	LG
50	DURWOOD GRAHAM	C
62	BOB ZIEGLER	RG
77	EARL LEGGETT	RT
81	BILLY SMITH	RE
16	MATT BURNS	QB
22	RONNIE JOHNSTON	LH
36	J. W. BRODNAX	RH
42	JIMMY TAYLOR	FB

THE TIGER SQUAD

10 Turner, QB	43 Thompson, FB	72 Lavin, T
11 Reynolds, QB	44 Porter, FB	73 Frayer, T
12 Westerman, QB	50 Graham, C	74 Spence, T
16 Burns, QB	51 Swope, C	75 Sandras, T
20 May, HB	52 Paris, C	76 Schwalb, G
21 Renfro, HB	53 Langan, C	77 Leggett, T
22 R. Johnston, HB	54 Wyble, C	80 Mitchell, E
29 Wenner, HB	60 Cassidy, G	81 Smith, E
33 White, HB	62 Ziegler, G	82 Wood, E
34 J. Johnston, HB	63 Stupka, G	83 Gardner, E
35 Kozan, HB	64 Kahlden, G	84 Fisher, E
36 Brodnax, HB	65 Scully, G	85 Hendrix, E
37 Schexnaildre, HB	67 Denstorff, G	86 B. Lott, E
41 DeCrosta, FB	70 Parker, T	87 Sheehy, E
42 Taylor, FB	71 Aucoin, T	89 Dumas, E

My Chesterfields *Satisfy* the Most!



KENTUCKY

PROBABLE STARTING LINEUP

No.	Name	Position
83	ROGER PACK	LE
79	LOU MICHAELS	LT
67	BOB COLLIER	LG
55	DAVE KUHN	C
64	ARCHIE POWERS	RG
70	J. T. FRANKENBERGER	RT
89	AL ZAMPINO	RE
11	KENNY ROBERTSON	QB
32	DON NETOSKIE	LH
28	BOB CRAVENS	RH
44	BOB DOUGHERTY	FB

11	Robertson, QB
16	Freeman, QB
17	Farley, QB
19	Hughes, QB
20	Sely, HB
21	I. Curnutte, HB
22	Gallagher, HB
25	Mitchell, HB
26	Herzog, HB
27	Allen, HB
28	Cravens, HB
30	Clere, HB
31	Mabry, HB
32	Netoskie, HB
33	Goins, HB
40	Tribble, FB
42	Sloan, FB
43	Morris, FB

THE WILDCAT SQUAD

44	Dougherty, FB	70	Frankenberger, T
45	G. Miller, FB	72	Bowie, T
47	Kunkle, G	73	Butler, T
50	Namath, C	74	Lindon, T
51	Living, C	75	Roth, T
53	Lombard, C	76	Cambron, T
54	Waite, C	77	Ilari, T
55	Kuhn, C	78	Moore, T
56	Blocker, C	79	Michaels, T
60	J. Miller, G	81	Charles, E
61	Goble, G	82	Urbaniak, E
62	D. Curnutte, G	83	Pack, E
64	Powers, G	84	Shively, E
65	Cain, G	86	Martin, E
66	Buchanon, G	87	Cornelius, E
67	Collier, G	88	Harrington, E
68	Bennett, G	89	Zampino, E
69	Lococo, G		

PAUSE



LOSS OF FIVE YARDS

- 1—Taking more than five times out during either half (except for replacement of injured player).
- 2—Illegal delay of game.
- 3—Failure to complete substitution before play starts.
- 4—Violation of kickoff formation.
- 5—Player out of bounds when scrimmage begins.
- 6—Putting ball in play before Referee signals "Ready-for-play".
- 7—Failure to maintain proper alignment of offensive team when ball is snapped. Also, backfield man illegally in motion.
- 8—Offside by either team or encroachment on neutral zone.
- 9—Attempt to draw opponents offside.
- 10—Crawling by runner.
- 11—Illegal forward pass (includes intentional grounding of forward pass). Also loss of down.
- 12—Taking more than two steps after Fair Catch is made.
- 13—Player on line receiving snap.
- 14—Any violation of the scrimmage formation.

LOSS OF FIFTEEN YARDS

- 15—Team not ready to play at scheduled time.
- 16—Violation of rules during intermission.
- 17—Illegal return of suspended player.
- 18—Interference by member of offensive team with defensive player making pass interception. (Also loss of down).
- 19—Interfering with the opportunity of a player of the receiving

PENALTIES

- team to catch a kick.
- 20—Illegal use of hands or arms by offensive player.
- 21—Tackling or blocking defensive player who has made fair catch.
- 22—Roughing the kicker.
- 23—Piling up, hurdling, clipping.
- 24—Tackling player out of bounds, or running into player obviously out of play.
- 25—Coaching from sidelines.
- 26—Failure to stop one full second following shift.
- 27—Defensive holding.
- 28—Invalid Signal for Fair Catch.

OTHER PENALTIES

- 29—Striking an opponent with fist, forearm, elbow or locked hands, kicking or kneeling — Mandatory disqualification of offending player plus loss of fifteen yards.
- 30—Foul within the one yard line — half the distance to the goal.
- 31—Interference by defensive team on forward pass — passing team's ball at spot of foul.
- 32—Forward pass being touched by ineligible receiver beyond the line of scrimmage—loss of fifteen yards from spot of preceding down and loss of a down.
- 33—Illegal touching of kicked ball within opponent's ten yard line — touchback.
- 34—Flagrantly rough play or unsportsmanlike conduct — Mandatory disqualification plus loss of fifteen yards.
- 35—Eligible pass receiver who goes out of bounds and later touches a forward pass — loss of down.

SEE PAGE 25 FOR OFFICIALS SIGNALS

DRINK

Coca-Cola

REG. U.S. PAT. OFF.

COPYRIGHT 1956, THE COCA-COLA COMPANY

COCA-COLA BOTTLING WORKS OF LEXINGTON, KENTUCKY

UNIVERSITY OF KENTUCKY ROSTER

No.	Name	Class	Pos.	Age	Ht.	Wt.	Ltrs.	Hometown	High School	Coach
11	Kenny Robertson, Jr.	QB		20	5'11"	189	1	West Palm Beach, Fla.	Palm Beach	H. M. Wittington
16	Jack Freeman, Sr.	QB		22	5'10"	160	0	Danville, Ky.	Danville	Pat James
17	Bill Farley, Sr.	QB		25	5'11"	177	2	Charleston, W. Va.	Stonewall Jackson	Russ Parsons
19	Delmar Hughes, Sr.	QB		21	6'1"	188	3	Prestonsburg, Ky.	Prestonsburg	Doc Ferrell
20	Edd Selvy, Soph.	HB		19	5'11"	182	0	Corbin, Ky.	Corbin	Bill Tucker
21	Ivan Curnutte, Jr.	HB		21	5'6"	165	0	Ashland, Ky.	Ashland	Charles Eblen
22	Jack Gallagher, Soph.	HB		20	5'10"	187	0	Cumberland, Ky.	Cumberland	Roy King
25	Billy Mitchell, Sr.	HB		21	6'2"	189	2	Georgetown, Ky.	Garth	Tom Green
26	Woody Herzog, Jr.	HB		20	5'11"	192	1	Hamilton, Ohio	Hamilton	Chuck Thackara
27	Dave Allen, Soph.	HB		19	5'11"	179	0	Hamilton, Ohio	Hamilton	Chuck Thackara
28	Bob Cravens, Soph.	HB		19	5'10"	191	0	Owensboro, Ky.	Owensboro	Joe O. Brown
30	Don Clere, Soph.	HB		20	5'11"	187	0	Ashland, Ky.	Ashland	Charlie Eblen
31	Dick Mabry, Soph.	HB		20	5'10"	179	0	Lexington, Ky.	Bullis M.A.	Harry Demning
32	Don Netoskie, Sr.	HB		22	5'11"	187	3	Martinsburg, W. Va.	Martinsburg	J. T. Cobourn
33	Carl Goins, Soph.	HB		19	6'	193	0	Madisonville, Ky.	Madisonville	Moose Zachem
40	Cliff Tribble, Soph.	FB		19	5'10"	184	0	Lebanon, Tenn.	Lebanon	Jim Babbs
42	Paul Sloan, Soph.	FB		19	5'11"	190	0	Catlettsburg, Ky.	Catlettsburg	Charlie Snyder
43	Waymond Morris, Soph.	FB		20	5'10"	191	0	Owensboro, Ky.	Owensboro	Joe O. Brown
44	Bob Dougherty, Sr.	FB		24	6'	212	1	Bellevue, Ky.	Bellevue	Ben Flora
45	Garland Miller, Soph.	FB		20	5'10"	209	0	Louisville, Ky.	Southern	Mike Dubick
47	Dennis Kunkle, Soph.	G		19	5'11"	199	0	Beaver, Pa.	Beaver	Pete Kane
50	Frank Namath, Soph.	C		18	6'	203	0	Beaver Falls, Pa.	Beaver Falls	Schacheren Leland
51	Bill Livings, Soph.	C		20	6'2"	201	0	Montgomery, Ala.	Sydney Lanier	Bill Moseley
53	Dick Lombard, Soph.	C		19	6'2"	202	0	Pittsburgh, Pa.	Westinghouse	Mike Dimpero
54	Dale Waite, Jr.	C		22	6'1"	194	0	Ludlow, Ky.	Ludlow	Paul Adams
55	Dave Kuhn, Sr.	C		20	6'2"	216	3	Louisville, Ky.	Male	Nick Denes
56	Dick Blocker, Soph.	C		19	6'2"	209	0	Louisville, Ky.	St. Xavier	John Meihaus
60	Jim Miller, Soph.	G		23	6'1"	190	0	Madisonville, Ky.	Madisonville	Moose Zachem
61	John Goble, Jr.	G		21	6'2"	198	0	Prestonsburg, Ky.	Prestonsburg	Doc Ferrell
62	Duke Curnutte, Sr.	G		23	6'	209	3	Ashland, Ky.	Ashland	Charles Eblen
64	Archie Powers, Jr.	G		20	5'11"	207	1	Williamsburg, Ky.	Williamsburg	Jack Miller
65	Ronnie Cain, Soph.	G		19	6'	203	0	Cumberland, Ky.	Cumberland	Roy King
66	Don Buchanon, Soph.	G		21	5'11"	206	0	Barbourville, Ky.	Barbourville	Herb Tye
67	Bob Collier, Jr.	G		20	6'1"	209	1	Jenkins, Ky.	Jenkins	Jim MacKenzie
68	Bob Bennett, Sr.	G		20	5'11"	208	2	Russell, Ky.	Russell	Fred Johnson
69	Vince Lococo, Soph.	G		19	5'11"	213	0	Louisville, Ky.	Flaget	Paul Miller
70	J. T. Frankenberger, Sr.	T		21	6'4"	226	2	Louisville, Ky.	Flaget	Paul Miller
72	Jim Bowie, Soph.	T		22	6'4"	204	0	Detroit, Mich.	M.M.I.	Capt. J. Reese
73	Jack Butler, Sr.	T		22	6'4"	220	2	Tompkinsville, Ky.	Tompkinsville	Darrell Carter
74	Bob Lindon, Soph.	T		21	6'	221	0	Hazard, Ky.	Hazard	Jim Caudill
75	Paul Roth, Soph.	T		19	6'3"	215	0	Chicago, Ill.	Lakeview	Ray Jacobson
76	Jim Cambron, Soph.	T		19	6'2"	224	0	Louisville, Ky.	Flaget	Paul Miller
77	John Ilari, Jr.	T		23	6'	207	1	Louisville, Ky.	Flaget	Paul Miller
78	Don Moore, Soph.	T		20	6'1"	198	0	Owensboro, Ky.	Owensboro	Joe O. Brown
79	Lou Michaels, Jr.	T		21	6'1"	229	1	Swoyerville, Pa.	Staunton M.A.	Albert McCue
81	Dick Charles, Soph.	E		20	6'	191	0	Murray, Ky.	Murray	Ty Holland
82	Jim Urbaniak, Jr.	E		20	6'	193	1	Fairmont, W. Va.	Fairmont	Paul Dawson
83	Roger Pack, Sr.	E		21	6'2"	202	2	Jenkins, Ky.	Jenkins	Delmas Freeman
84	Doug Shively, Soph.	E		19	6'2"	197	0	Lexington, Ky.	Lafayette	Tony Salvato
86	Jack Martin, Soph.	E		20	5'11"	196	0	Corbin, Ky.	Corbin	Bill Conde
87	John Cornelius, Jr.	E		20	6'4"	206	1	Bethesda, Md.	Chevy Chase	John Sandusky
88	Roger Harrington, Sr.	E		23	5'9"	163	0	Louisville, Ky.	Manual	Mike Basrak
89	Al Zampino, Sr.	E		25	6'1"	192	3	Philadelphia, Pa.	Bok Tech	Max Siani

FOR COMPLETE REPORTS ON THIS GAME AND OTHERS BEING PLAYED TODAY, READ THE SPORTS SECTION OF SUNDAY HERALD-LEADER

HERE'S A SMART PLAY!

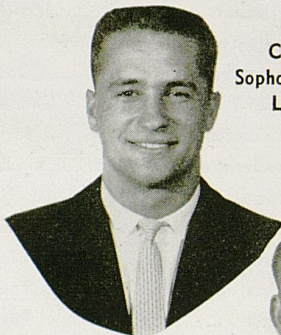
WHILE AT THE BALL GAME

**"LEAVE YOUR PARKING
PROBLEM AT
DICK WEBB'S"**

**MAMMOTH
GARAGE**

**MAIN & ROSE
PHONE 4-7908**

**LEXINGTON'S
NEWEST, BIGGEST
Parking Garage**



CLIFF TRIBBLE
Sophomore — Fullback
Lebanon, Tenn.

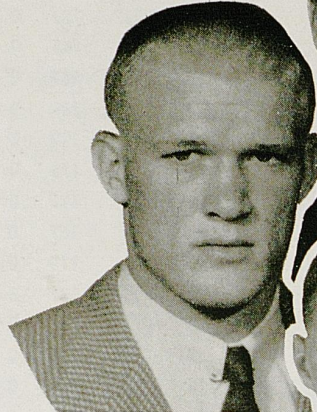


BOB CRAVENS
Sophomore — Halfback
Owensboro, Ky.

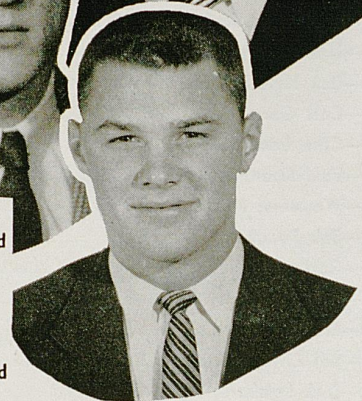


EDD SELVY
Sophomore — Halfback
Corbin, Ky.

DON BUCHANNAN
Sophomore — Guard
Barbourville, Ky.



JOHN GOBLE
Sophomore — Guard
Prestonsburg, Ky.



DOUG SHIVELY
Sophomore — End
Lexington, Ky.

Perry Lumber Co.

"Contractors & Builders"

- Lumber
- Builders Supplies
- Roofing
- Mill Work
- Hardware
- Paint
- Sporting Goods
- Appliances

— Easy Parking —

246 WALTON AVE.

LEXINGTON, KY.

WV LK *Dial* 590

originating station
All U of K GAMES on



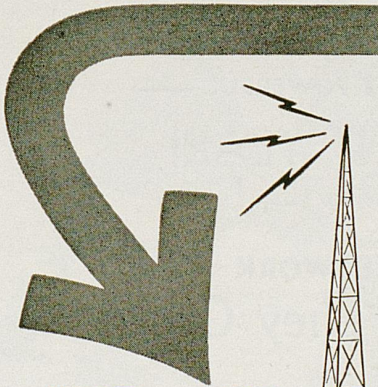
FOOTBALL NETWORK



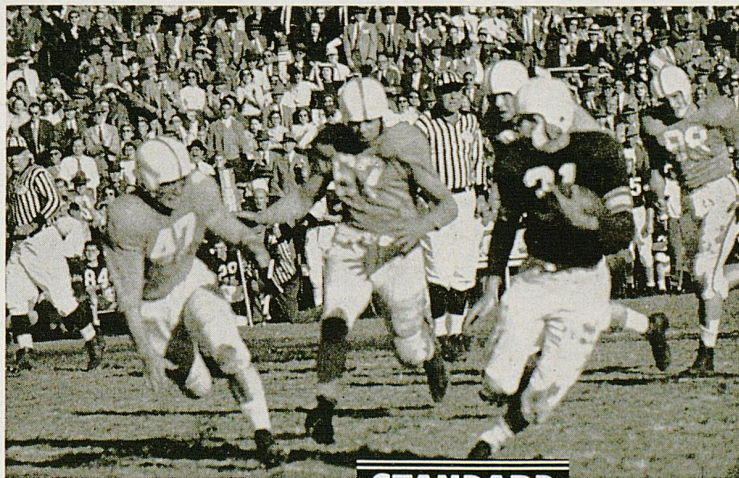
PLAY-BY-PLAY WITH
Claude Sullivan

CENTRAL KENTUCKY'S SPORTS STATION

Follow U. of K. with Claude Sullivan On the Standard Oil Network



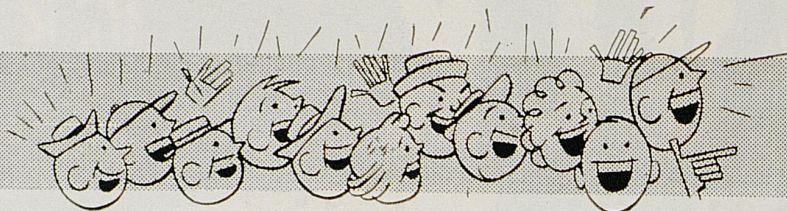
WKCT BOWLING GREEN	WCTT CORBIN
WFKY FRANKFORT	WVLK LEXINGTON
WAVE LOUISVILLE	WVJS OWENSBURG
WPAD PADUCAH	WPRT PRESTONSBURG



Brought by your



Dealer



CHEER...from your car or easy chair

Be sure to see all Kentucky "Wildcat" football games this fall that you possibly can . . . but if you can't cheer from the stadium, you can listen to thrilling play-by-play radio accounts of Kentucky's games over more than 40 local Kentucky radio stations.



SPONSORED BY

ASHLAND OIL & REFINING COMPANY
and AETNA OIL COMPANY



Again, For The 24th STRAIGHT YEAR!

ALL OF THE U. OF K.'S FOOTBALL AND BASKETBALL GAMES
ON THE AIR OVER

WLAP

— KENTUCKY'S OLDEST AND LEXINGTON'S MOST POWERFUL —

And Again — For The 8th STRAIGHT YEAR!

Originating the Ashland-Aetna 36-Station Hook-up serving you,
at home, over your own station on

THE SOUTH'S GREATEST SPORTS NETWORK

Follow The "Cats" Wherever They Go!

In person, if possible, if not, keep tuned to . . .

— 630 ON YOUR DIAL —

Co-Sponsored on WLAP By —

BALL & CO. and YORK-LEXINGTON CO.

SCORES OVER STOLL FIELD PUBLIC-ADDRESS SYSTEM COME TO
YOU THROUGH THE COURTESY OF THE LEXINGTON NEWSPAPERS

JOHNSTON
HB

WOOD
E

ZIEGLER
G

HENDRIX
E

RENFROE
HB

SCULLY
G

SHEEHY
E

KAHLDEN
G

PARIS
C

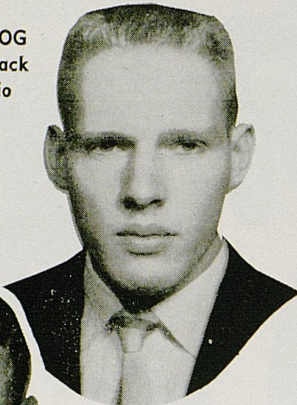
LEGGETT
T

GRAHAM
C

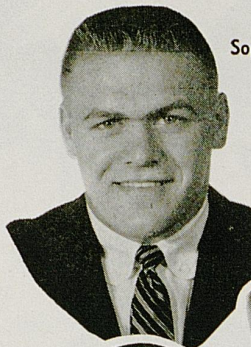
The TIGERS



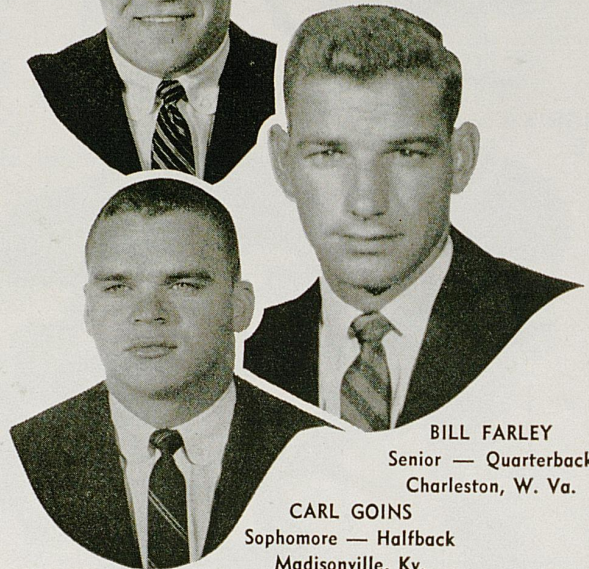
WOODY HERZOG
Junior — Halfback
Hamilton, Ohio



PAUL SLOAN
Sophomore — Fullback
Cattlettsburg, Ky.



J. T. FRANKENBERGER
Senior — Tackle
Louisville, Ky.



BILL FARLEY
Senior — Quarterback
Charleston, W. Va.

CARL GOINS
Sophomore — Halfback
Madisonville, Ky.

Enjoy Your Lexington Visit
At The

Ranch Motel

EASTERN CITY LIMITS — U. S. 60

1133 Winchester Road

Lexington, Kentucky

Phone 2-0777

Exclusive

LUSTERWAY
DRY Drycleaning

Guarantees cleaner,
brighter, and softer
garments.

BECKER

LAUNDERERS CLEANERS

5 Convenient Locations

LUX
LAUNDRY

Everything washed in
gentle Lux Flakes.

Exclusive

NOBODY can Launder a Shirt like BECKER

SCORES OVER STOLL FIELD PUBLIC-ADDRESS SYSTEM COME TO
YOU THROUGH THE COURTESY OF THE LEXINGTON NEWSPAPERS

Laundry

Dry Cleaning

DeBoor

One Day Service Monday thru Friday

No Added Cost

15 Per Cent Discount

and

Curb Service

AT

**265 EUCLID AVE.
PHONE 3-0235**

**880 E. HIGH ST.
PHONE 2-7046**

**1966 HARRODSBURG PIKE
PHONE 5-1488**



MAY — HB

CASSIDY
G

SPENCE
T

LOTT
E

REYNOLDS
QB

JOHNSTON
RH

SMITH
E

TURNER
QB

PARKER
T

TAYLOR
FB

AUCOIN
T

THE TIGERS

PURCELL'S

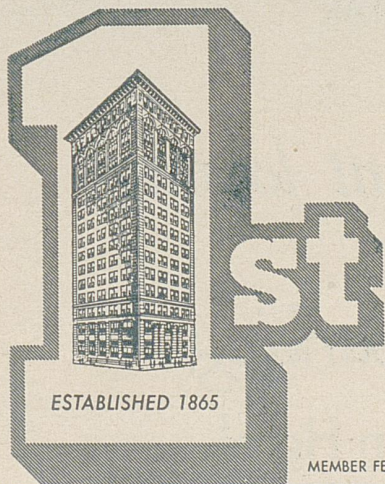
Central Kentucky's Largest Department Store

... Your ONLY One Stop Shopping Center

EVERYTHING UNDER ONE ROOF:

- Courtesy
- Dependability
- Economy

322 WEST MAIN STREET, LEXINGTON, KENTUCKY



*Winning
More
Friends
Every
Season!*



MEMBER FEDERAL DEPOSIT INSURANCE CORPORATION

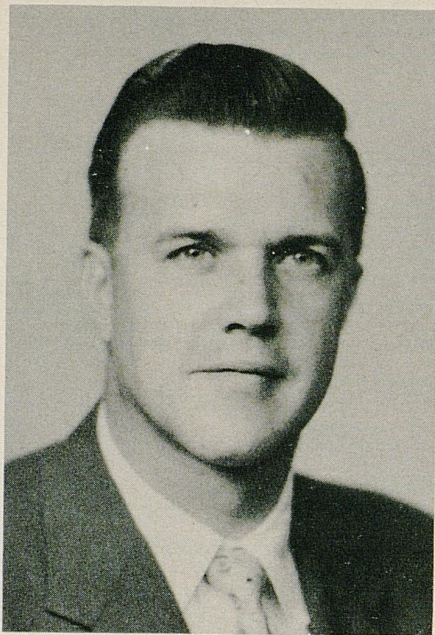
MEMBER FEDERAL RESERVE SYSTEM

**FIRST NATIONAL BANK
and Trust Company**

OUR 92nd YEAR OF SERVICE IN THE BLUE GRASS AREA

FOR COMPLETE REPORTS ON THIS GAME AND OTHERS BEING PLAYED
TODAY, READ THE SPORTS SECTION OF SUNDAY HERALD-LEADER

*We Serve You Even Better
in our 10th year.*



FRANK PURDY
General Manager

In the same convenient location

155 E. High St.

With convenient parking

Behind the Kentuckian Hotel

FIFE, COOKE & PURDY
General Insurance

Dial: 2-9966
or: 4-0919

"Honestly, it's the best policy"

In the Kentuckian
Hotel Building

HISTORIC WHITE HALL



COLLEGE OF Commerce

Training for business and for public service careers is offered by the College of Commerce, which also provides instruction intended to give a general understanding of economic relationships. Students may choose from the following curricula: General Business; Banking and Finance; Personnel Management; Marketing, Merchandising, and Advertising; Accounting; Business Management; Industrial Administration; Commerce-Law; and Secretarial Training. Students planning to enter business for themselves need essentially the same preparation as those who are employed by larger concerns. Many young people plan careers in public service in such fields as public finance, accounting, marketing, statistics, and personnel management.

Buy with Confidence at . . .



Next to Union Station in Lexington



**Do You
Motor?
Travel?**

Attend football
games and other
athletic events?
Then examine a

Bausch & Lomb Binocular at Tinder-Kraus-Tinder. Note its great light gathering power, wide field, ease of use, and rugged construction. Enthusiastically recommended by sportsmen, Army and Navy Officers, aviators and other users as "The World's Best By Any Test."



Tinder-Kraus-Tinder
Opticians—Photographic Supplies

145 N. Upper Street

Lexington

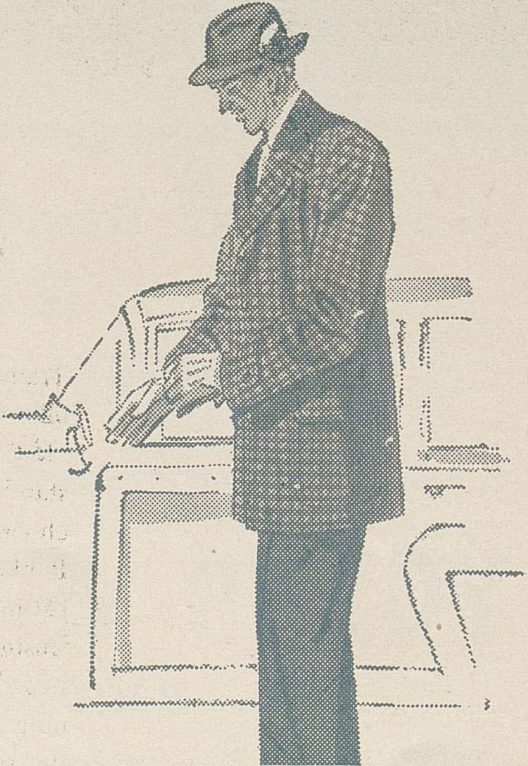
New Fashion Note for Fall

SUBURBAN COATS

Enjoy new comfort in the stadium . . . new freedom in motoring . . . with a Suburban Coat. Ideal for all spectator-sports, this new fashion goes just as far as your finger tips. See it at Lexington's leading stores .

The Association Of Men's Stores Of Lexington

ANGELUCCI & RINGO	KAUFMAN'S
BOMANZI	MAXSON'S
GRAVES, COX & CO.	MEYERS



SCORES OVER STOLL FIELD PUBLIC-ADDRESS SYSTEM COME TO
YOU THROUGH THE COURTESY OF THE LEXINGTON NEWSPAPERS

THE STORE WHERE QUALITY LEADS

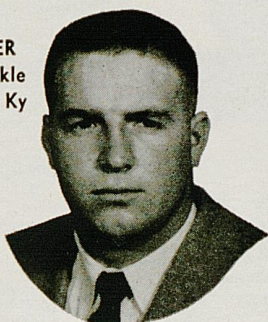
Standard furniture company

221 East Main Street

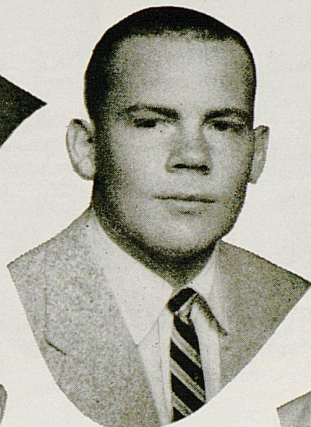
Lexington, Kentucky

PRICES TO FIT EVERY BUDGET

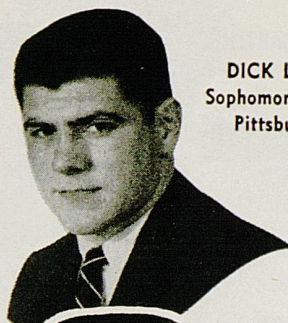
JACK BUTLER
Senior — Tackle
Tompkinsville, Ky



JIM URBANIAK
Junior — End
Fairmont, W. Va.

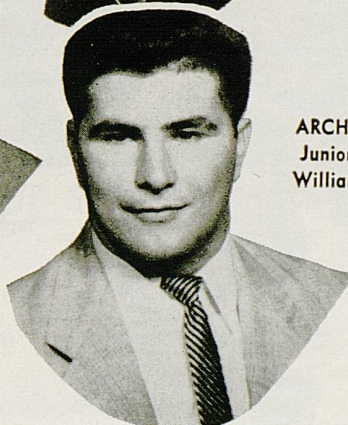


DICK LOMBARD
Sophomore — Center
Pittsburgh, Pa.

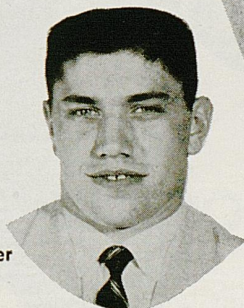


BILL LIVINGS
Sophomore — Center
Montgomery, Ala.

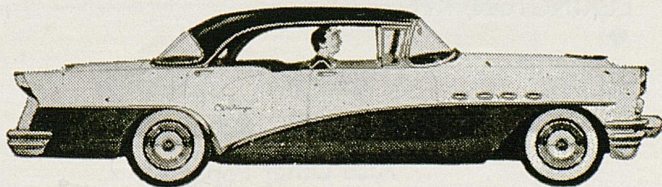
ARCHIE POWERS
Junior — Guard
Williamsburg, Ky.



FRANK NAMATH
Sophomore — Center
Beaver Falls, Pa.



HERE'S THE BEST BUICK YET!



1956 Buick CENTURY 4-Door, 6-Passenger Riviera Model 63

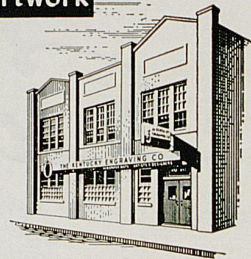
See it at

SHUG GLENN BUICK, INC.
116 E. High Street
LEXINGTON, KENTUCKY

FOR COMPLETE REPORTS ON THIS GAME AND OTHERS BEING PLAYED TODAY, READ THE SPORTS SECTION OF SUNDAY HERALD-LEADER

Photo-Engravings--Multilith and Offset Plates--Mats--Artwork

Our new plant offers the largest and finest facilities in the Blue Grass for the production of all types of newspaper and fine screen photo-engraving, lithographic plates, newspaper mats and artwork. We would appreciate an opportunity to prove to your firm the higher quality of our work and service. Phone or write.

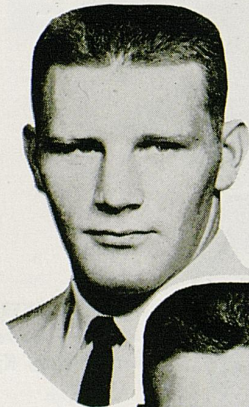


The Kentucky Engraving Co.

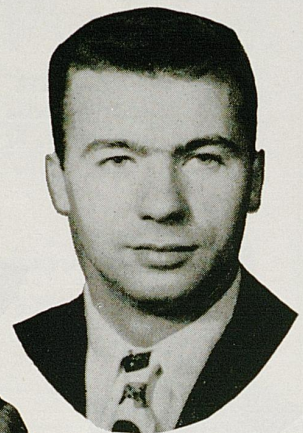
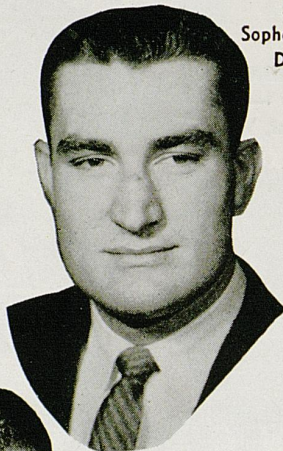
430 West Short Street

Lexington, Ky.

JACK MARTIN
Sophomore — End
Corbin, Ky.

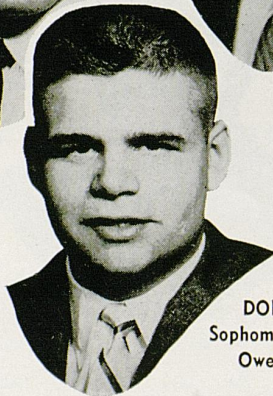


JIM BOWIE
Sophomore — Tackle
Detroit, Mich.

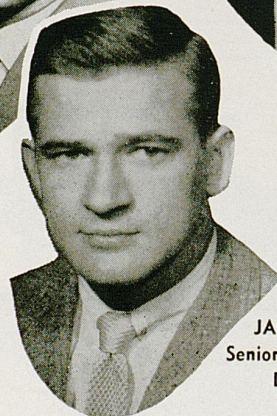


DALE WAITE
Junior — Center
Ludlow, Ky.

DON CLERE
Sophomore — Halfback
Ashland, Ky.



DON MOORE
Sophomore — Tackle
Owensboro, Ky.



JACK FREEMAN
Senior — Quarterback
Danville, Ky.

HARRY ALDRIDGE MOTORS

AND LEXINGTON AUTO-BODY

133 MIDLAND

PHONE 3-3163

LEXINGTON, KENTUCKY

Lexington's

HUDSON DEALER

Featuring The
ALL NEW RAMBLER

YOUR AUTHORIZED

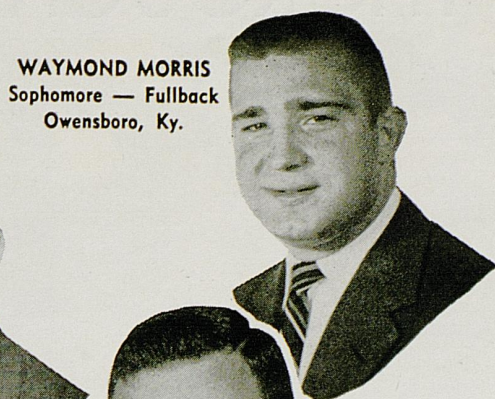
Jaguar Dealer

Also Other Popular
SPORTS CARS

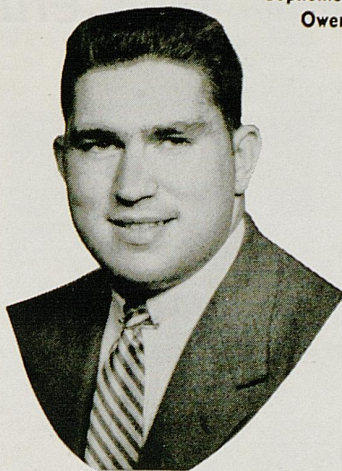
SCORES OVER STOLL FIELD PUBLIC-ADDRESS SYSTEM COME TO YOU THROUGH THE COURTESY OF THE LEXINGTON NEWSPAPERS



BOB COLLIER
Junior — Guard
Jenkins, Ky.



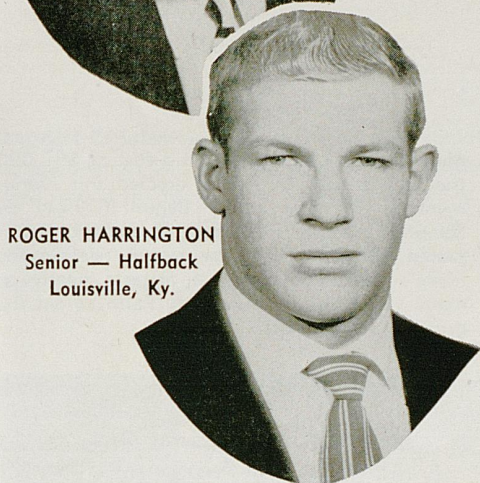
WAYMOND MORRIS
Sophomore — Fullback
Owensboro, Ky.



BOB LINDON
Sophomore — Tackle
Hazard, Ky.



KENNY ROBERTSON
Junior — Quarterback
West Palm Beach, Fla.



ROGER HARRINGTON
Senior — Halfback
Louisville, Ky.

Hargett Construction Co.

INCORPORATED

General Contractors

Phone 2-2992

113 Walton Avenue

Lexington, Ky.

ONE STOP SHOPPING

With

A Lunch Counter and

Large Restaurant

McCRORY'S

5 - 10 - 25

STORE

Phoenix Hotel Building

Lexington, Kentucky

FOR COMPLETE REPORTS ON THIS GAME AND OTHERS BEING PLAYED
TODAY, READ THE SPORTS SECTION OF SUNDAY HERALD-LEADER

THOROUGHBRED LANDMARKS

In Central Kentucky



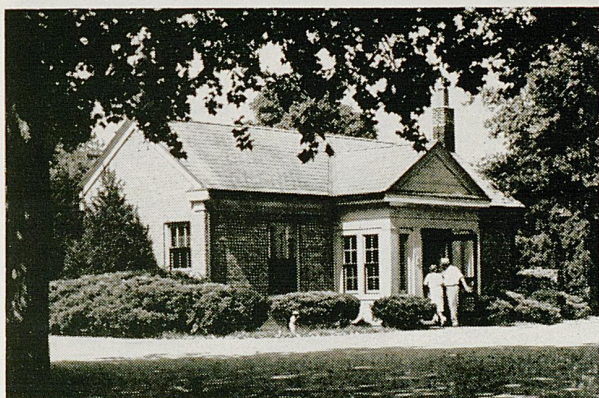
MAN O' WAR STATUE—At a cost of \$50,000 the late Samuel D. Riddle erected this monument to his great horse. Begun in 1941 by sculptor Herbert Haseltine, it was not completed until 1947, a few months before the horse's death. The statue attracts nearly as many visitors daily to Faraway Farm as did the great horse it honors.

KEENELAND CLUB—This structure, now a private club at Keeneland, was the start of the late Jack Keene's "dream track." Begun in 1916, it was to house race horses on the first floor, and on the second and third floors were to be living quarters, club rooms, dining rooms—and even a ball room. Keene is reported to have spent \$400,000 on the building. Unable to complete the track he hoped to operate purely for sport's sake, Keene sold the structure and 148 acres to Keeneland Association in 1935.



*"Heart of the
Thoroughbred
Breeding Industry"*

HAGGIN COLUMNS—A memento of the fabulous mansion James Ben Ali Haggin built at Elmendorf farm around the turn of the century at a cost of a million dollars are its columns which Joseph E. Widener left intact when he razed the structure after his purchase of the farm in 1920.



CLAIBORNE OFFICE—Claiborne Stud in Bourbon County was founded in 1915 by Arthur B. Hancock. There are more than 200 broodmares and a dozen stallions, including *Nasrullah, at this world famous nursery.



CALUMET STUD BARN—The five stallions that live in this beautiful barn earned \$2,458,145 racing for Calumet Farm. They are Citation, Bull Lea, Ponder, Sun Again, and Mark-Ye-Well.



THE KENTUCKY GATE—The lever type gate, shown here at the entrance of Almahurst Farm, has been an identification feature of Kentucky horse farms since it was designed and patented by James R. Clark in 1898.



SPENDTHRIFT STUD BARN—Eight stallions are housed in this stable including Nashua, the world's leading money-winning Thoroughbred, *Royal Charger, *Alibhai, *Bernborough, *Solar Slipper, *My Babu, Billings, and Jet Pilot.

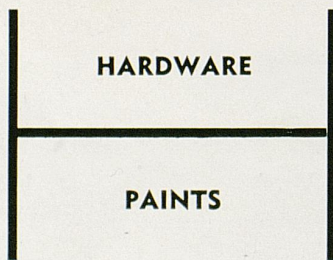
— THE LEXINGTON SALESMEN CLUB —



FRONT ROW: (left to right) Andrew A. Brown, Roland Worth, Ed Inman, Oscar Langley, Ray Frazier, Burkitt Stephenson, Charles Thompson, Jack Mullins, Bill Kleiser, Russ Graves, George Scott, Gordon Tiedt, James Bowman, Arthur M. Butler, Ed Abraham, Ralph Farmer.
SECOND ROW: Joe Hanson, D. S. Holman, John Warington, L. D. Nickles, Henry Schwabe, George Daniels, Bob Bradley, Frank Horak, Buford Halfhill, Glenn Riggs, Morton Petrie, George Stanfill, Bill Grall.
THIRD ROW: Ralph Karsner, Gattton Jones, Marion Prater, Ed Kellermann, Terry Grissom, Jim Mundell, Ken Lambert, Bob Crabtree, Joe Papania, Earl Crouch, J. T. Reynolds, Ellery Chase, C. V. Rose, Ed Lancaster, Dick Reddick, George Horine.
FOURTH ROW: Wes Mastin, Ed Miller, Howard Isaacs, Charles Seeberger, Glenwood Webb, Jim Beard, Barney Stall, Thurman Measel, Mark Sharff, Paul Bryant, Charles White, Ralph Rambicure, Bob Swope, E. H. Porter, George Metcalfe, Russ Campbell, Norman Burke.

INTERNATIONAL HARVESTER

Parts — Service



ECTON SUPPLY CO., Inc.

1060 W. High St. Phone 3-5727
Lexington, Ky.

Leave Your Parking Problems

At Home

RIDE THE BUS
TO THE GAME



Lexington Railway System, Inc.

SCORES OVER STOLL FIELD PUBLIC-ADDRESS SYSTEM COME TO
YOU THROUGH THE COURTESY OF THE LEXINGTON NEWSPAPERS

R

NO ORDER TOO SMALL — NO DISTANCE TOO GREAT

R

— AT —

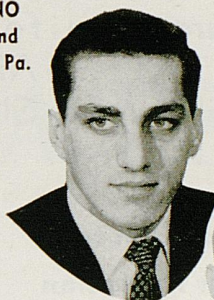
SAGESER

Pharmacy
Short and Mill
4-2662

Apothecary
Opposite Good Samaritan
4-9660

Both Locations — A Complete Drug Store

AL ZAMPINO
Senior — End
Philadelphia, Pa.



IVAN CURNUTTE
Junior — Halfback
Ashland, Ky.



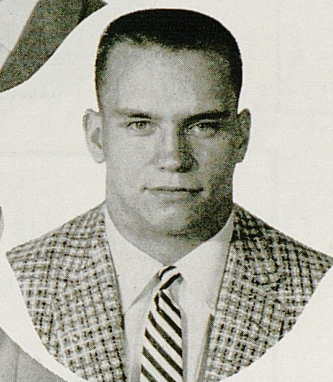
DICK BLOCKER
Sophomore — Center
Louisville, Ky.



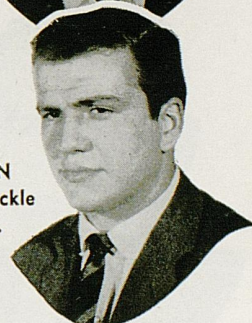
JIM MILLER
Sophomore — Guard
Madisonville, Ky.



PAUL ROTH
Sophomore — Tackle
Chicago, Ill.



JIM CAMBRON
Sophomore — Tackle
Louisville, Ky.



Lexington Yellow Cab Co.

Inc.

ALL
RADIO CABS

Dial 2-2230

ALL
RADIO CABS

FOR COMPLETE REPORTS ON THIS GAME AND OTHERS BEING PLAYED
TODAY, READ THE SPORTS SECTION OF SUNDAY HERALD-LEADER

ASHLAND DAIRIES

PRODUCTS Excel in Quality.

Ashland Dairies VAC-HEAT Process Insures Uniform Good Taste . . . Bottle After Bottle . . . Glass After Glass Every Day of the Year.

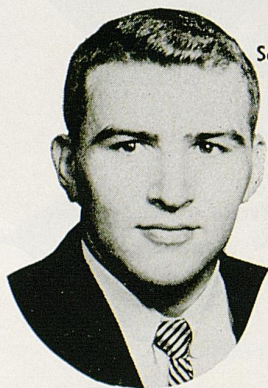
**At Your Grocer
From Your Routeman**



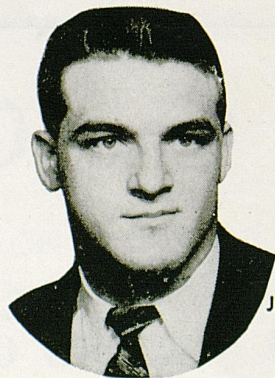
DENNIS KUNKLE
Sophomore — Guard
Beaver, Pa.

RONNIE CAIN
Sophomore — Guard
Cumberland, Ky.

VINCE LOCOCO
Sophomore — Guard
Louisville, Ky.



GARLAND MILLER
Sophomore — Fullback
Louisville, Ky.



JOHN ILARI
Junior — Tackle
Louisville, Ky.

THE GREATEST TOUCHDOWN IN HISTORY!



... thousands are now
TEBBING their shoes...

teb

Amazing new shoe polish discovery that instantly shines and polishes your shoes in one simple step.

teb

One bottle for all colors of smooth leather.

teb

No muss . . . No fuss. Will not stain, rub off, or soil hands, fabrics, rugs.

39
shines,
only
39¢

Get TEB today from your favorite grocery, drug, novelty or shoe store.

Answers to "MYSTERY WILDCATS"—Wallace (Wah Wah) Jones (1945-48)
and Charles McClendon (1948-50)

We're Pulling For . . .

KENTUCKY'S
WILDCATS

*To Make 1956
A Great Season*

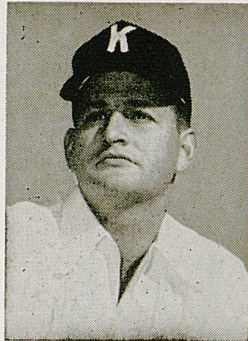


Campus Book Store

Everything for the Student



BUSTER BROWN
Equipment Mgr.



JOHN PAYNE
Trainer



BOBBY HOLT
Student Mgr.



When the Chips are Down and You Must Produce—

you'd better count on the guy who can deliver the best goods the fastest! There is not a person who has handled printing who has not needed fine engravings in the fastest time possible. Lexington Photo-Engraving Company is geared for "Fast Production . . . fine reproduction". We supply newspapers, magazines, and printers throughout Central Kentucky with the finest engravings obtainable anywhere.

LEXINGTON PHOTO-ENGRAVERS

223 W. SHORT ST.

PHONE 3-5015

SCORES OVER STOLL FIELD PUBLIC-ADDRESS SYSTEM COME TO YOU THROUGH THE COURTESY OF THE LEXINGTON NEWSPAPERS

DANCE



★ **TONITE!**

IN BEAUTIFUL

Joyland Casino



★
★ **BEAUTIFUL
SURROUNDINGS**

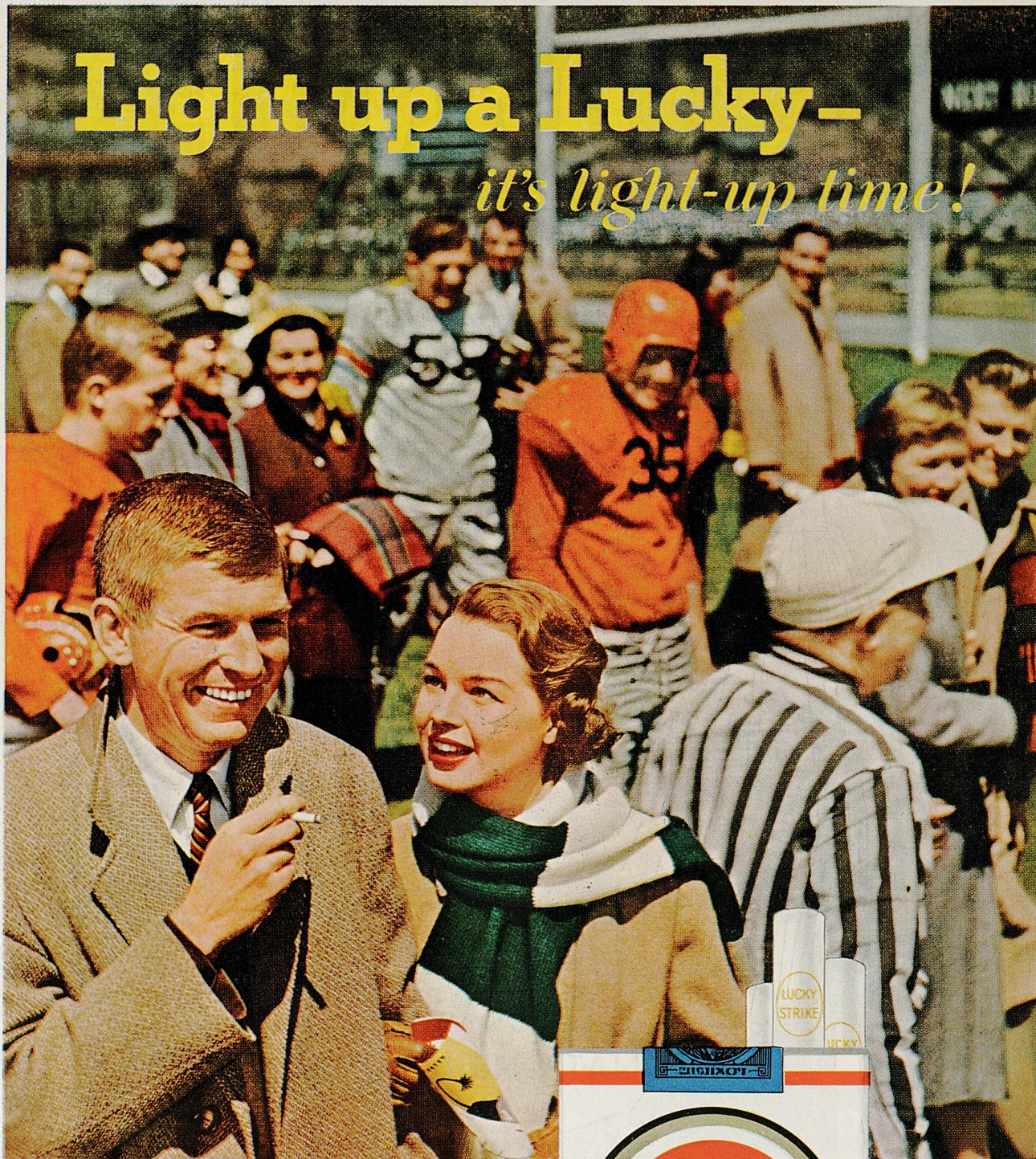
★
★ **MIXED
DRINKS**

★
**HOME OF THE
NATIONS NAME BANDS**

Joyland *Casino*

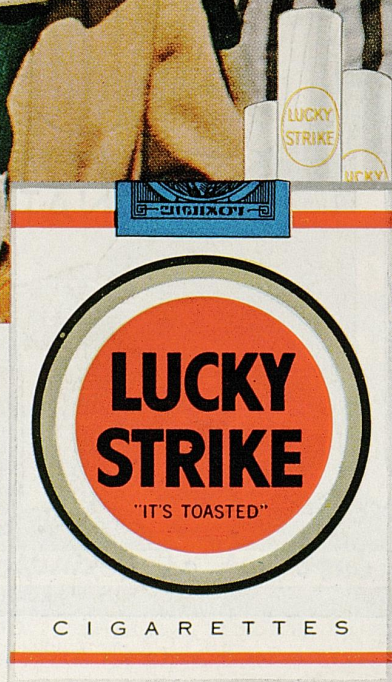
Just out of Lexington On the Paris Pike

Light up a Lucky—
it's light-up time!



Luckies
Taste Better

Cleaner, Fresher, Smoother!



**"IT'S
TOASTED"**
to taste
better!