



SEP 1901  
LEBANON  
KY.



FORMERLY ED. BRITNEY  
TANNERY

LEBANON GASLIGHT CO.  
(NOT FULLY DEVELOPED)

F. FEHR  
BREWING CO.  
BEER DEPOT

W. MERKLE  
PEOPLE'S MILLS  
REPORT BLDG.

H. HUMMEY  
CARRIAGE WORKS  
129 129 1/2 130

NORRIS HOUSE

NORRIS HO.  
LIVERY

MULBERRY

Map Division  
JUL 1905  
Theory of Contours

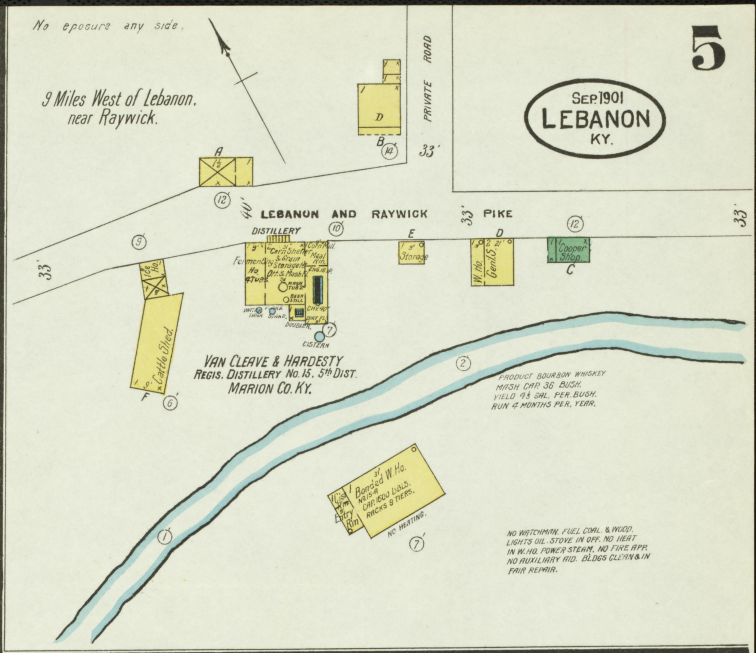
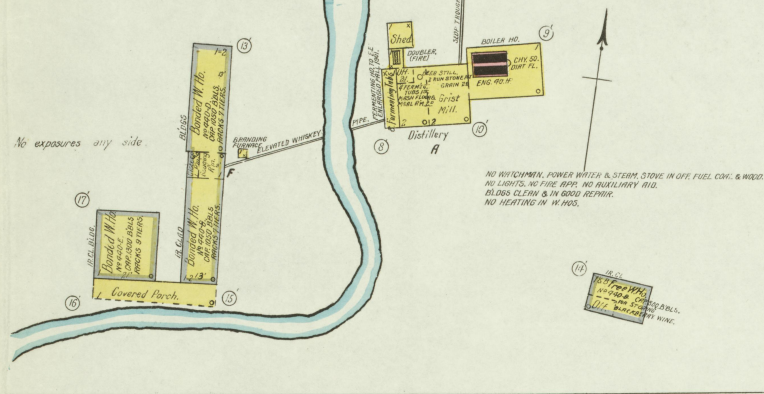
Scale of Feet.  
0 50 100 150

W. C. BERRY





**A.R. BURKS MILL Co.**  
 1/2 Mile N.W. of Lebanon, Ky.  
 Capacity 30 Barrels Monthly.  
 ONE CORNER MILL; 25 ONE SHOT PURIFIER; ONE BRAN DUSTER; ONE MEAL SIFT; ONE SHAWMUTTER; ONE SCOURER; ONE REEL; ONE HOOD OF FLY; ONE NEW & GOOD CONDITION.  
 NO WATCHMAN. FUEL COAL; POWER STEAM; LIGHTS OIL. DRINK & BUCKETS. LINDSEY WATER FROM IN G. REEF. WELL.  
 95' TO L. & N. R. R.  
 NO OTHER EXPOSURES ANY SIDE.



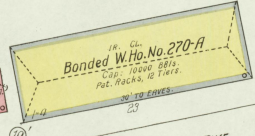
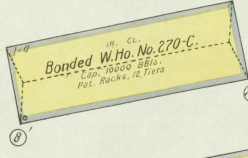
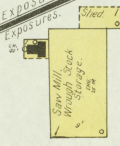
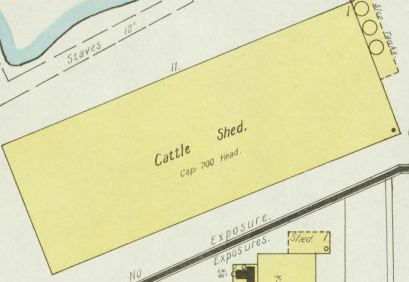
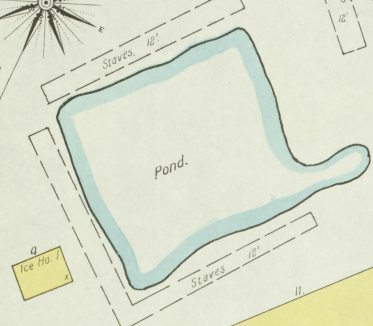
SEP 1901  
LEBANON  
KY.

CHAS KOBERT & CO.  
Reg. Distillery No. 229.  
SOUR MASH.

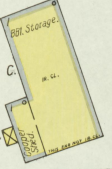
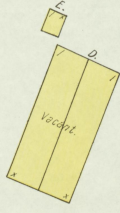
WATHEN, MUELLER & CO.  
Reg. Distillery No. 270.  
SWEET MASH.

CUMBERLAND  
DISTILLERY.

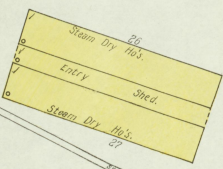
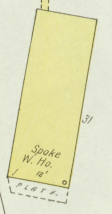
BOLLING FORK DISTILLY.



J. A. STERK  
COOPERAGE WORKS.  
(Closed Aug 1901).



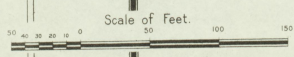
ROYER WHEEL CO.  
Spoke & Felloe Fac.  
Spoke & Felloe Fac.  
Spoke & Felloe Fac.



1/4 Mile N.E. of Court Ho.

LEBANON & CAMPBELLVILLE PIKE.

1/4 Mile W. of Court Ho.

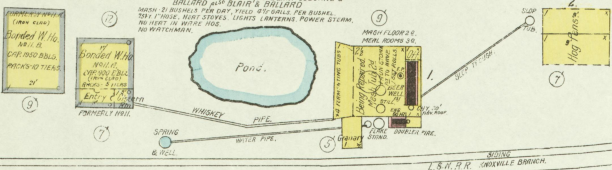


Map Division  
31 JUL 1915  
Library of Congress

No exposure any side.

**BLAIR OSBORNE & BALLARD DISTILLING CO.**  
REGISTERED DISTILLERY NO. 11, FIFTH DIST. CHICAGO,  
MARION CO. KY.

FORMERLY MRS. L. S. OSBORNE & BALLARD  
MASH 20 BUSHEL PER DAY YIELD 3 BLS.  
100' HOSE. LIGHTS LANTERNS. FUEL WOOD.  
NO WITCHMAN. POWER STEAM.  
NO WERT IN WARE HOSE.



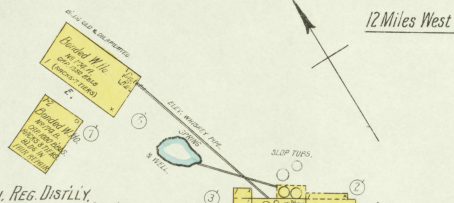
12 Miles West of Lebanon.

No exposure.

12 Miles West of Lebanon.

**SMITH & SMITH, REG. DISTLLY**  
NO 174, 5TH DIST. CHICAGO, MARION CO. KY.

MASH 30 BUSH PER DAY YIELD 3 BLS.  
100' HOSE. LIGHTS LANTERNS. FUEL WOOD.  
NO WITCHMAN. POWER STEAM.

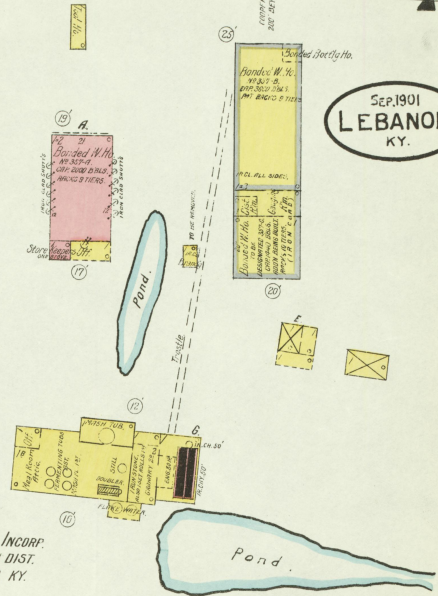
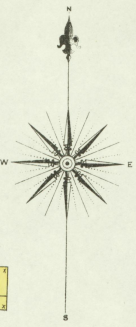


I. & N. R. R. (CANDYVILLE BRANCH)

I. & N. R. R. (CANDYVILLE BRANCH)

7

SEP. 1901  
**LEBANON**  
KY.



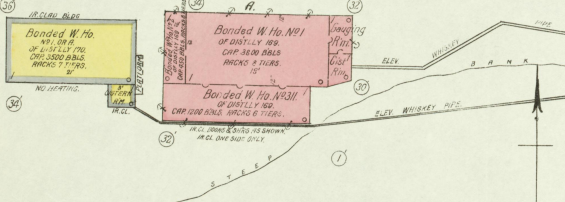
**R. CUMMINS & CO. INCORP.**  
REG. DISTLLY NO 357, 5TH DIST.  
LORETTA MARION CO. KY.

NO WITCHMAN. STOVES IN OFFICE  
LIGHTS LANTERNS. POWER STEAM.  
FUEL COAL. MASH ONE 3000. RUN  
100' HOSE. YIELD 4 BLS. PER BUSH.  
SOFT 1" HOSE. NO WERT IN WARE  
HOSE.

10 Miles West of Lebanon



I. & N. R. R. (CANDYVILLE BRANCH)



**DANT DISTILLERY CO.**  
REG. DISTLLY NO 169, 5TH DIST. KY.  
FORMERLY J. W. DANT.

**JESSE MOORE HUNT Co.**  
REG. DISTLLY NO 170, 5TH DIST. MARION CO. KY.

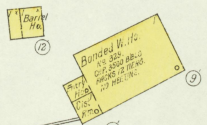
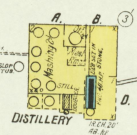
PRODUCT BOURBON WHISKEY. POWER MADE.  
MASH 30 BUSH. YIELD 4 BLS. PER  
BUSH. RUN 2 TO 6 MONTHS PER YEAR.  
NO WITCHMAN. WATER FROM POOL & SPRING.  
STOVE IN OFFICE. NO WERT IN WARE HOSE. LIGHTS  
OIL. 100' HOSE. BLDGS. CLEAN & IN GOOD  
REPAIR. NO REGULATORY AID.

**DANT STATION**  
14 Miles West of Lebanon

**THE W. H. HEAD DISTILLING CO.**  
FORMERLY W. H. HEAD & CO.  
REG. DISTLLY NO 320, 5TH DIST. MARION CO. KY.

PRODUCT BOURBON WHISKEY  
MASH ONE 30 BUSH. YIELD 4 BLS. PER BUSH.  
RUN 4 TO 6 MONTHS PER YEAR.

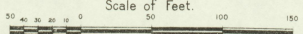
NO WITCHMAN. WATER FROM SPRING.  
POWER STEAM. STOVE IN OFFICE. NO WERTING  
IN WARE HOSE. OILS & HOSE LIGHTS OIL.  
50' HOSE. BUILDINGS IN REPAIR.



Situated near **RAYWICK**  
14 Miles West of Lebanon.

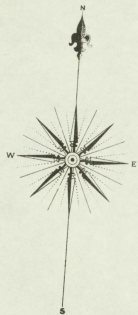
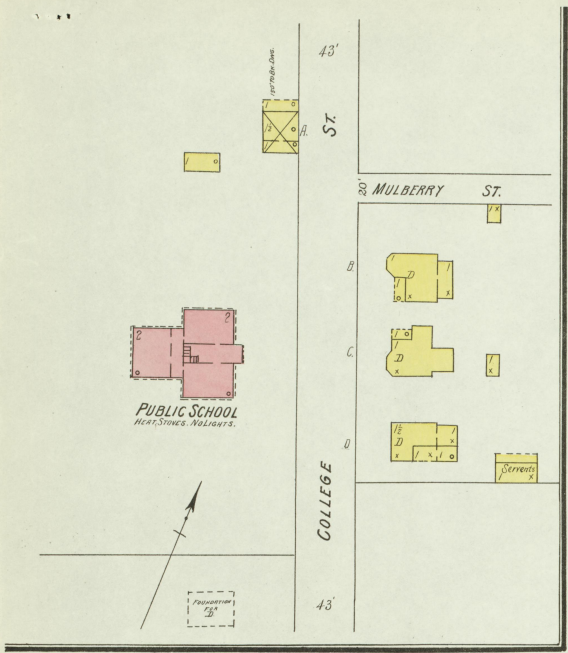
Map Edition  
31 JUL 1905  
Library of Congress

Scale of Feet.



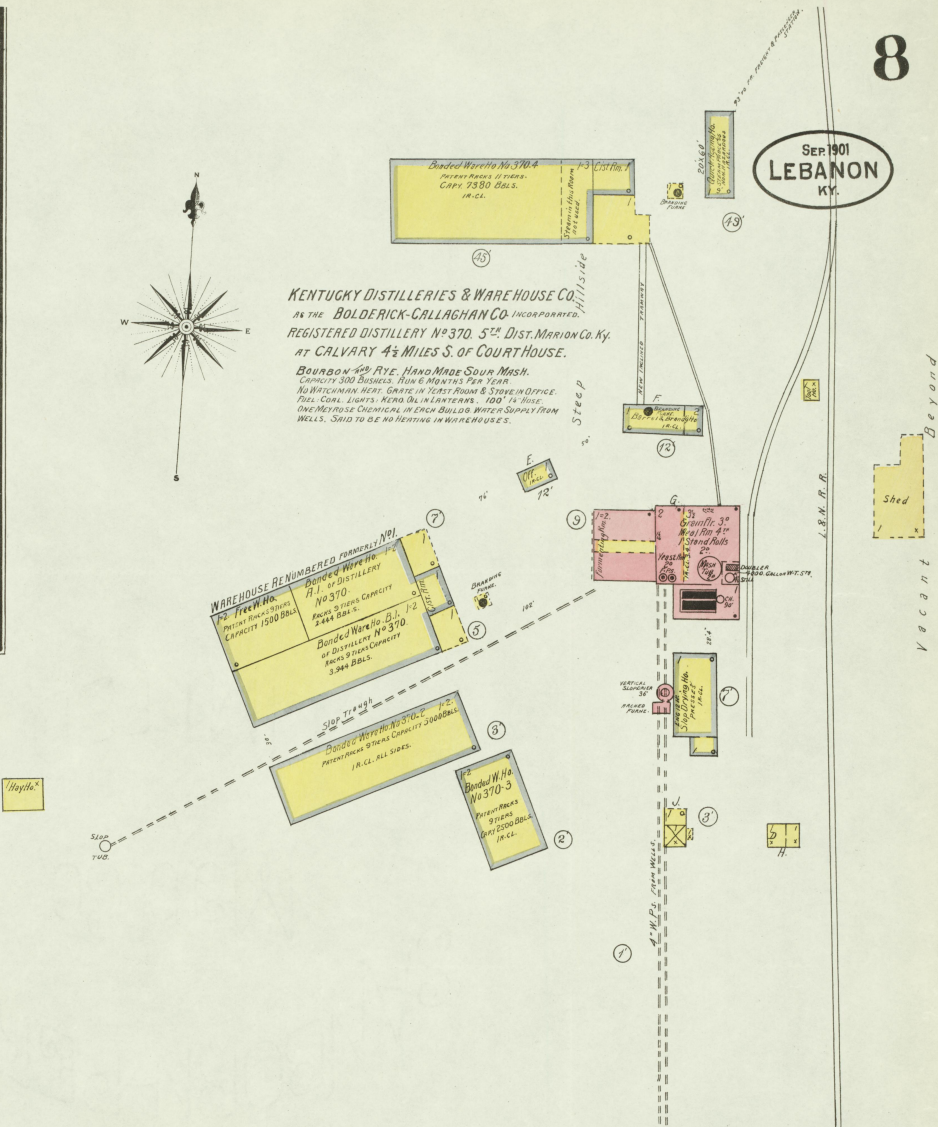
No exposure any side.

SEP 1901  
LEBANON  
KY.

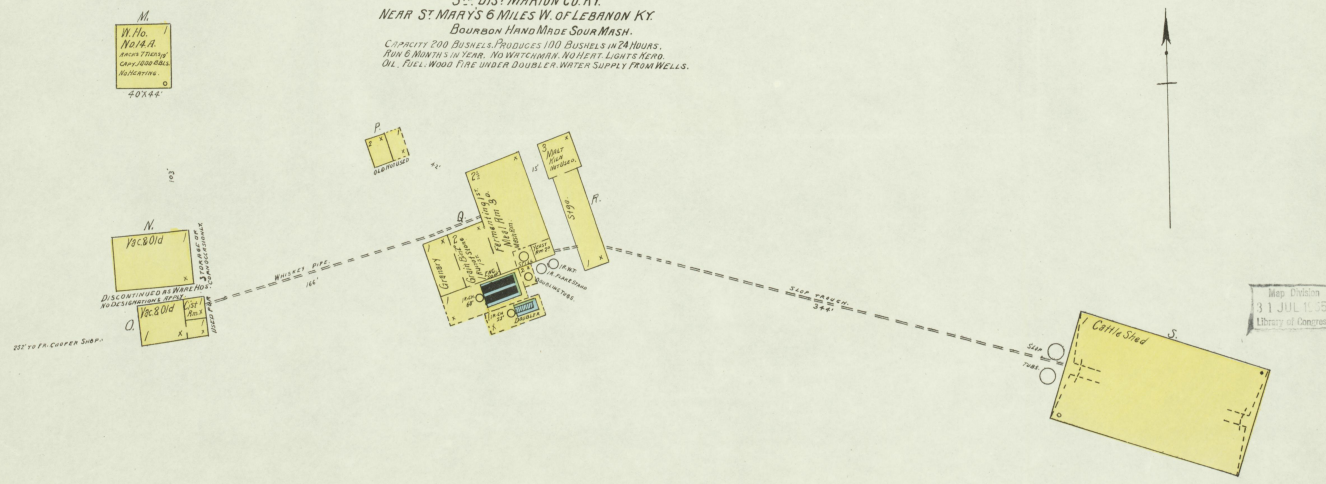


**KENTUCKY DISTILLERIES & WAREHOUSE CO.**  
 AT THE **BOLDERICK-CALLAGHAN CO.** INCORPORATED.  
 REGISTERED DISTILLERY NO 370, 5<sup>TH</sup> DIST. MARION CO. KY.  
 AT CALVARY 4 1/2 MILES S. OF COURT HOUSE.

**BOURBON RYE, HAND MADE SOUR MASH.**  
 CAPACITY 300 BUSSELS, RUN 6 MONTHS PER YEAR.  
 NO WATCHMAN, NO HEAT, LIGHTS BURN, OIL, FULL COAL LIGHTS, KERO OIL IN LANTERNS, 100' IN HOSE,  
 ONE METHODICAL CHEMICAL IN EACH BUILDING, WATER SUPPLY FROM WELLS, SAID TO BE NO HEATING IN WAREHOUSES.



**B.F. MATTINGLY**  
 REGISTERED DISTILLERY NO 14,  
 5<sup>TH</sup> DIST. MARION CO. KY.  
 NEAR ST. MARYS 6 MILES W. OF LEBANON KY.  
 Bourbon Hand Made Sour Mash.  
 CAPACITY 200 BUSSELS, PRODUCES 100 BUSSELS IN 24 HOURS,  
 RUN 6 MONTHS IN YEAR, NO WATCHMAN, NO HEAT, LIGHTS BURN,  
 OIL, FULL WOOD FIRE UNDER DOUBLER, WATER SUPPLY FROM WELLS.



No Exposure any Side.