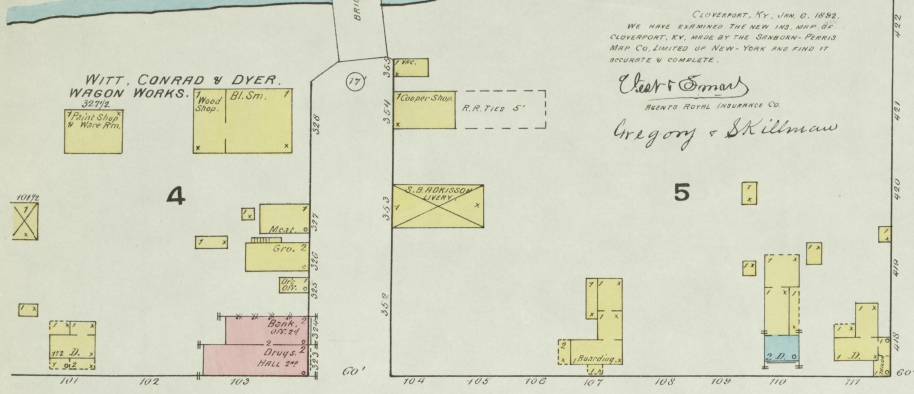


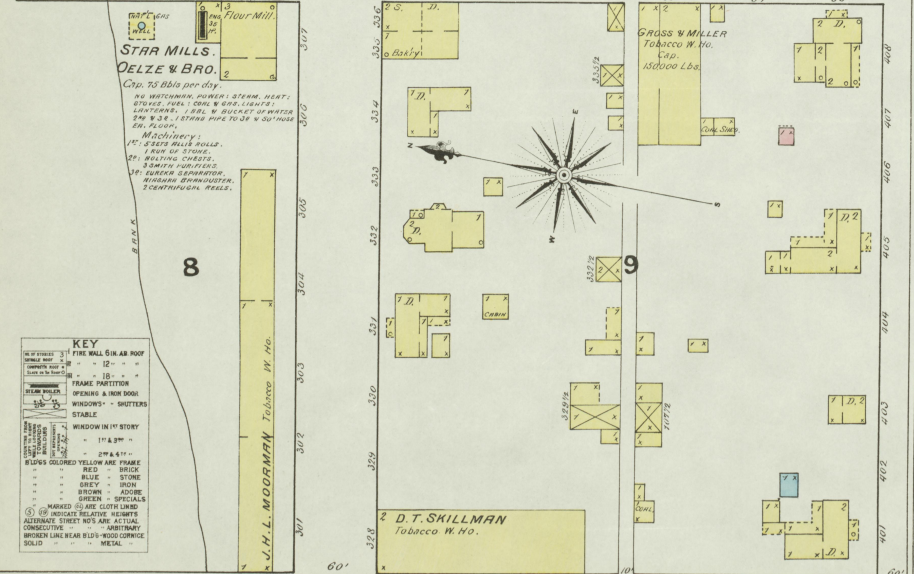
SEE BELOW CLOVER Creek



ELM

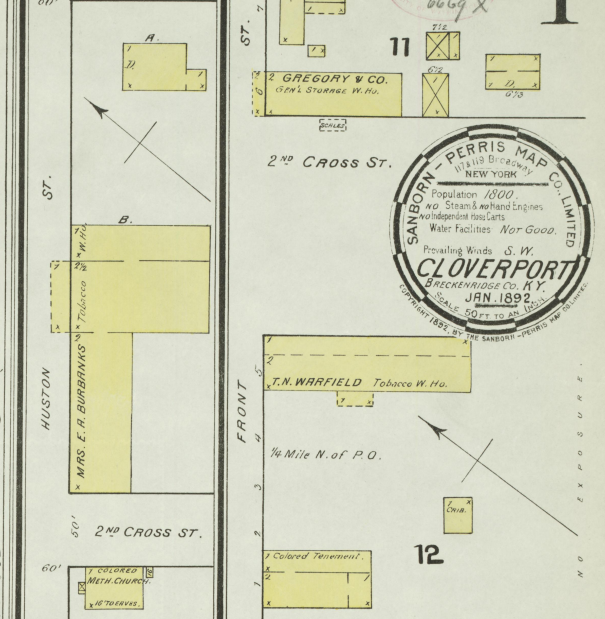


LOGUST

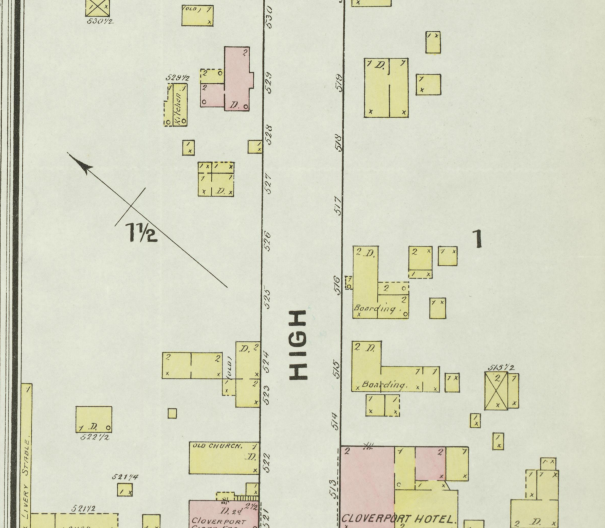


CENTRE SHEET No. 2.

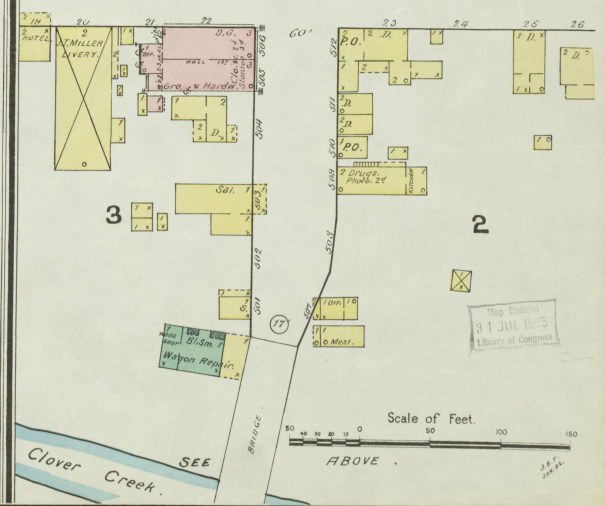
1/8 Mile East of P.O.



HIGH



CROSS



Sanborn - Perris Map Co. Limited
Population 1800
Cloverport, Ky.
JAN. 1892
Scale 50 FT. TO AN INCH

KEY

Fire Wall	Thin Red Line
Roof	Black
Frame Partition	Thin Yellow Line
Openings in Roof	Thin Blue Line
Windows - Shutters	Thin Green Line
Stable	Thin Purple Line
Window in 1st Story	Thin Orange Line
2nd & 3rd	Thin Pink Line
Stripes Colored Yellow are	Frame
Red	Brick
Blue	Stone
Grey	Iron
Brown	Wood
Green	Specials
Marked by the City Lines	
Indicate Relative Heights	
Relative Street No's are at the	
Consecutive	
Block Letter and No's - Wood	
Solid	Metal

