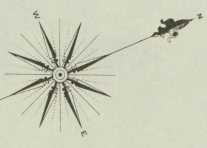


SEP 1895
RICHMOND
KY.

276'



HIGH

BRECK AV.

104

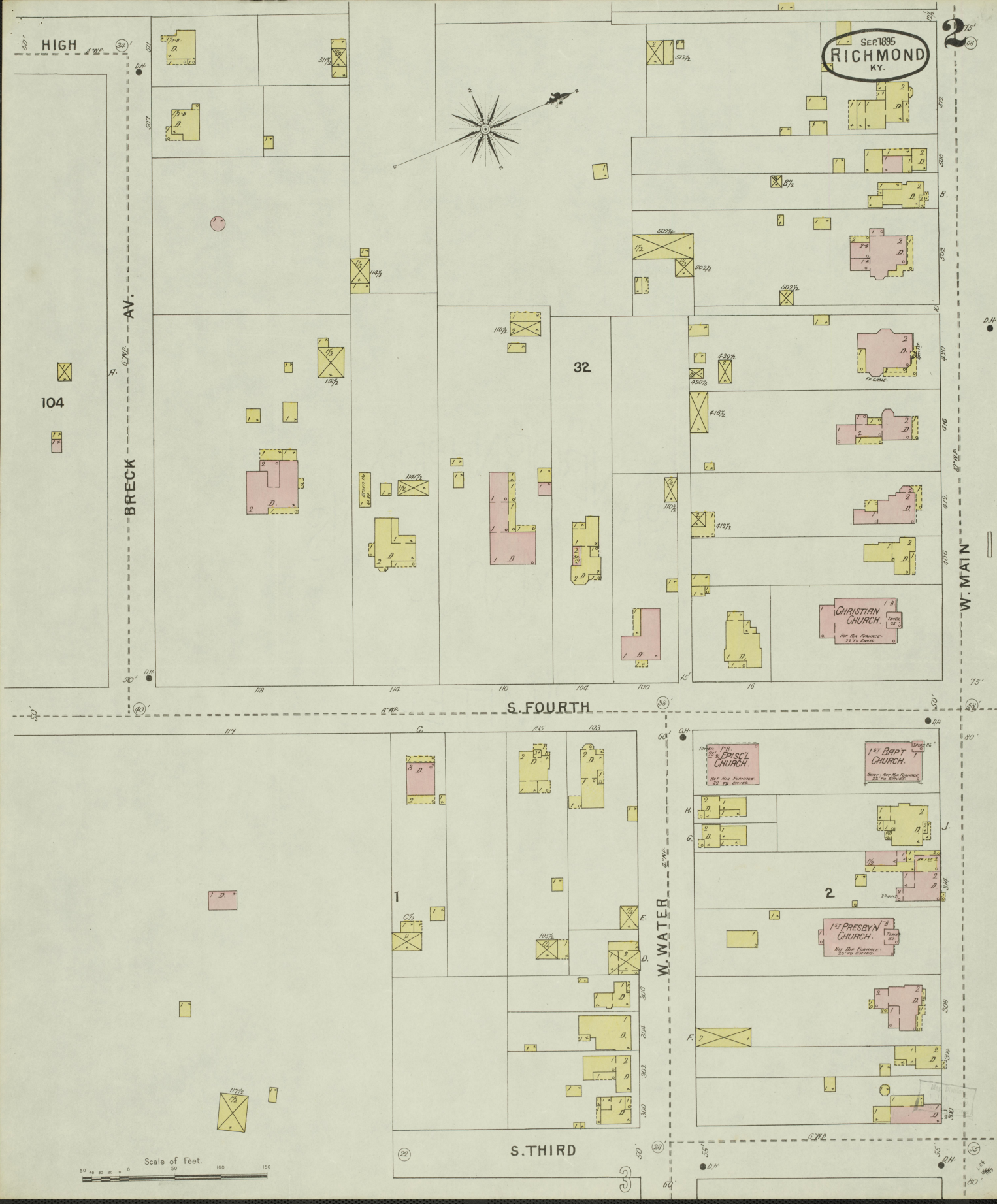
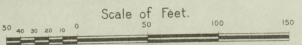
32

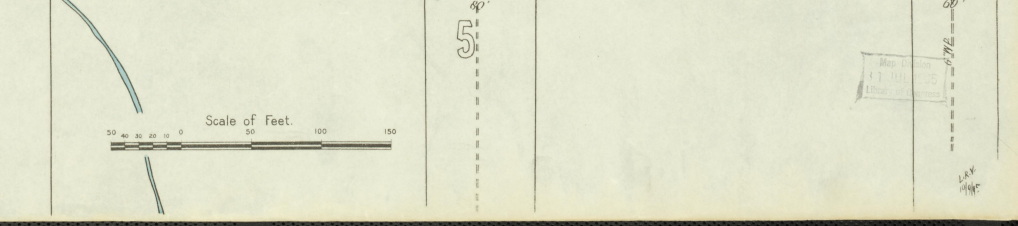
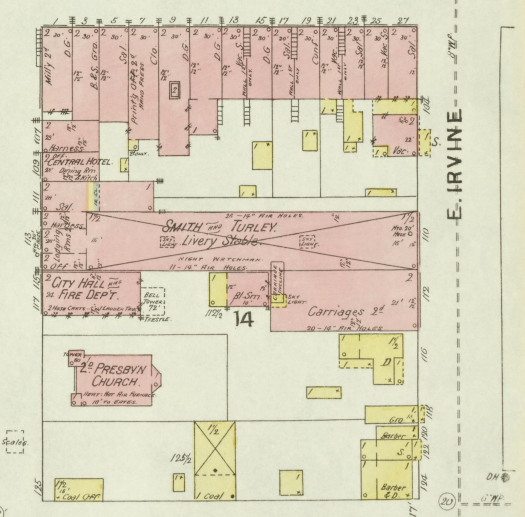
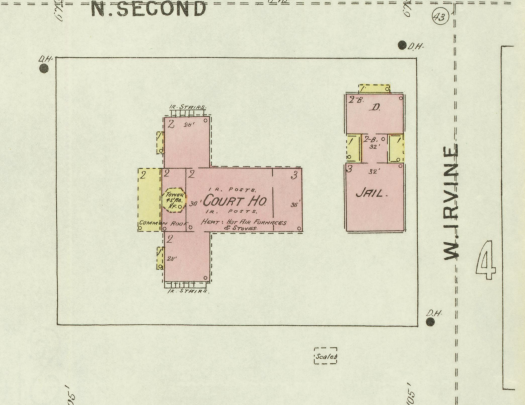
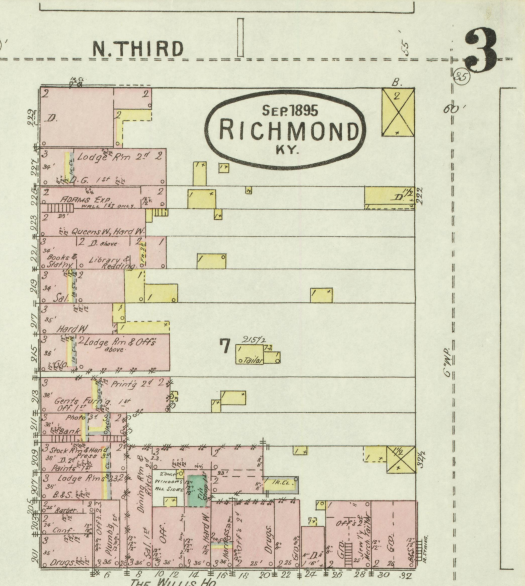
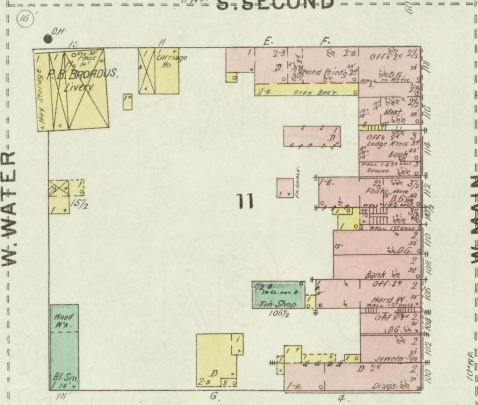
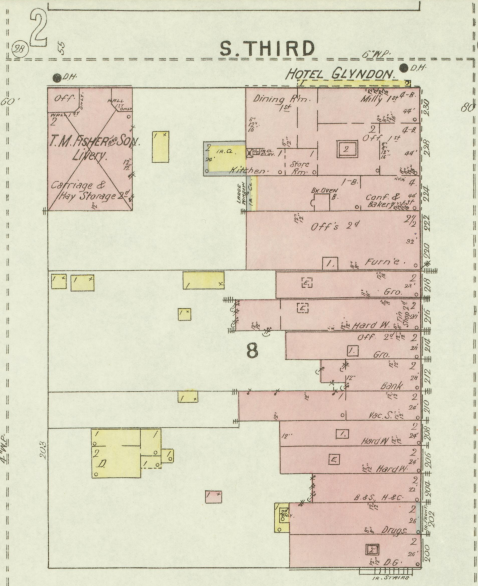
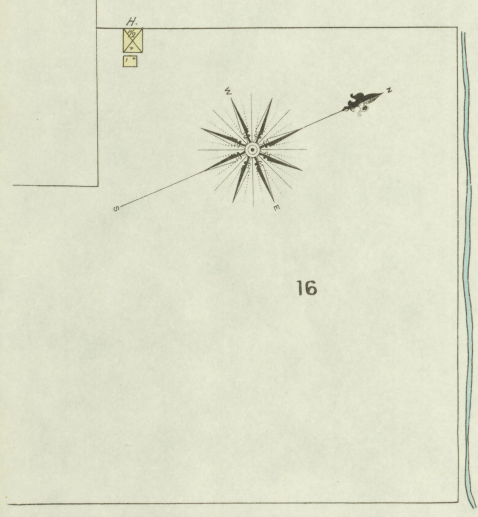
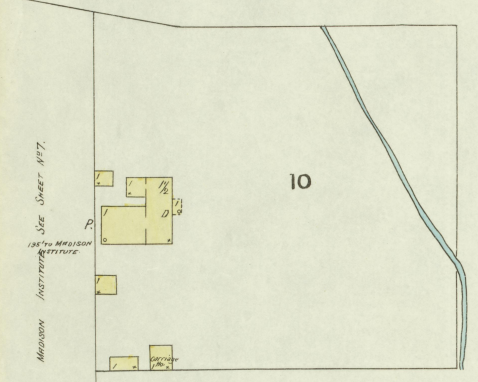
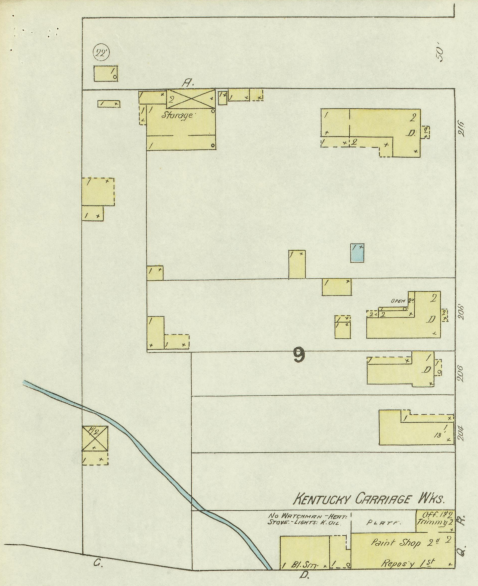
W. MAIN

S. FOURTH

W. WATER

S. THIRD



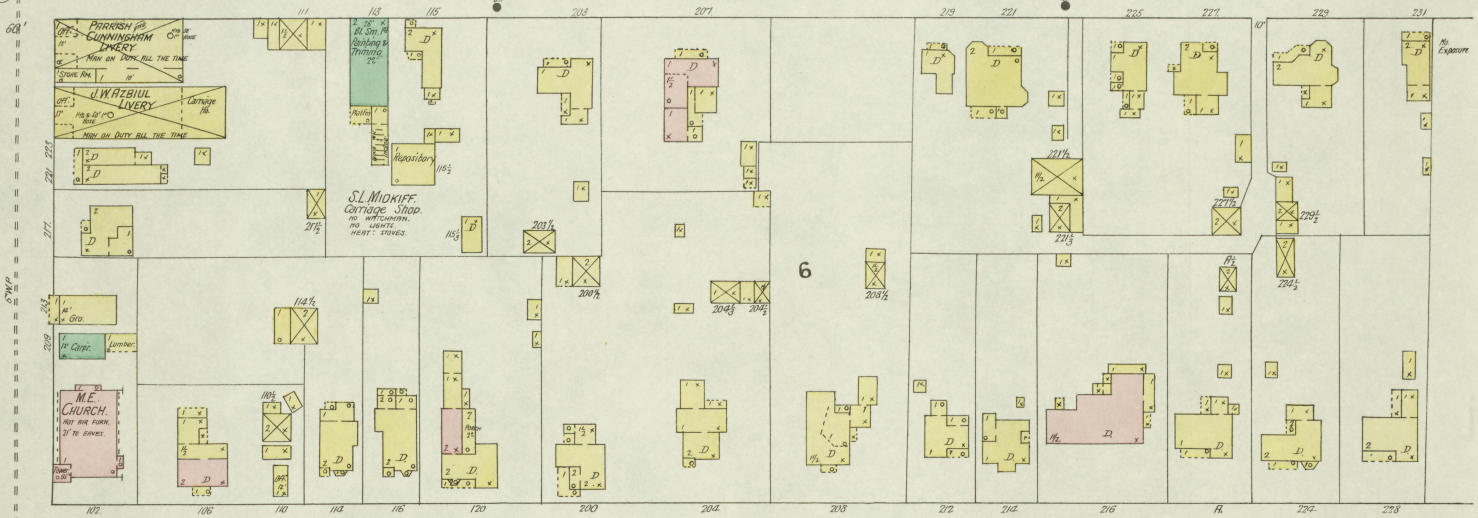


SEP 1895
RICHMOND
KY.

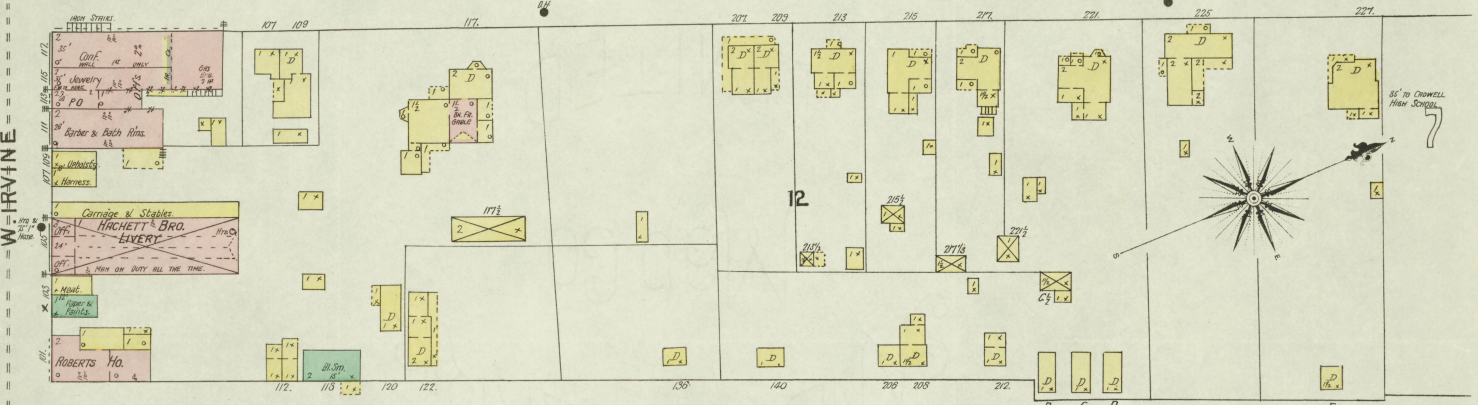
NORTH ST.

LYNNON AV

N-THIRD



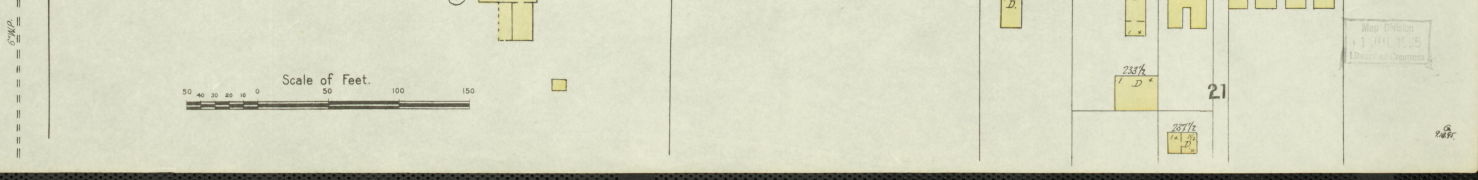
N-SECOND

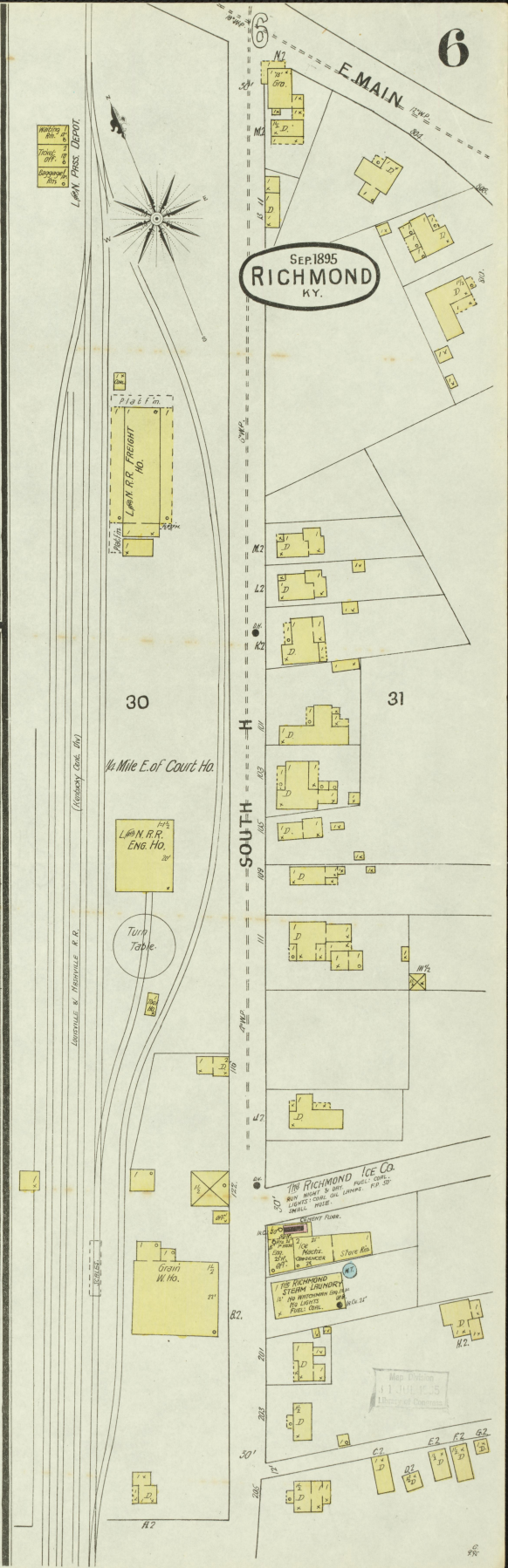
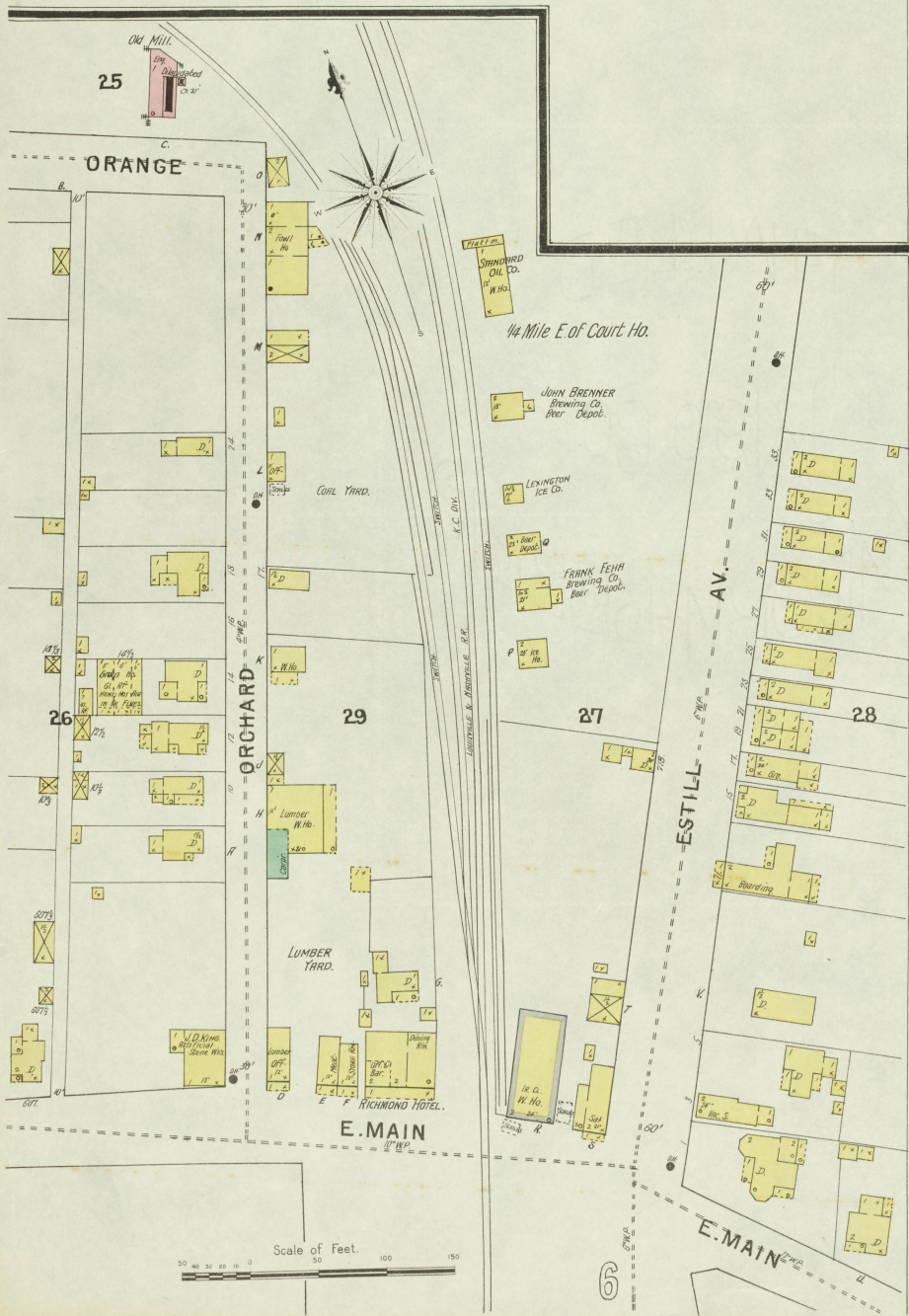
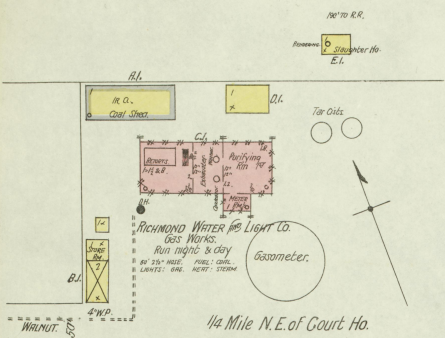


N-FIRST



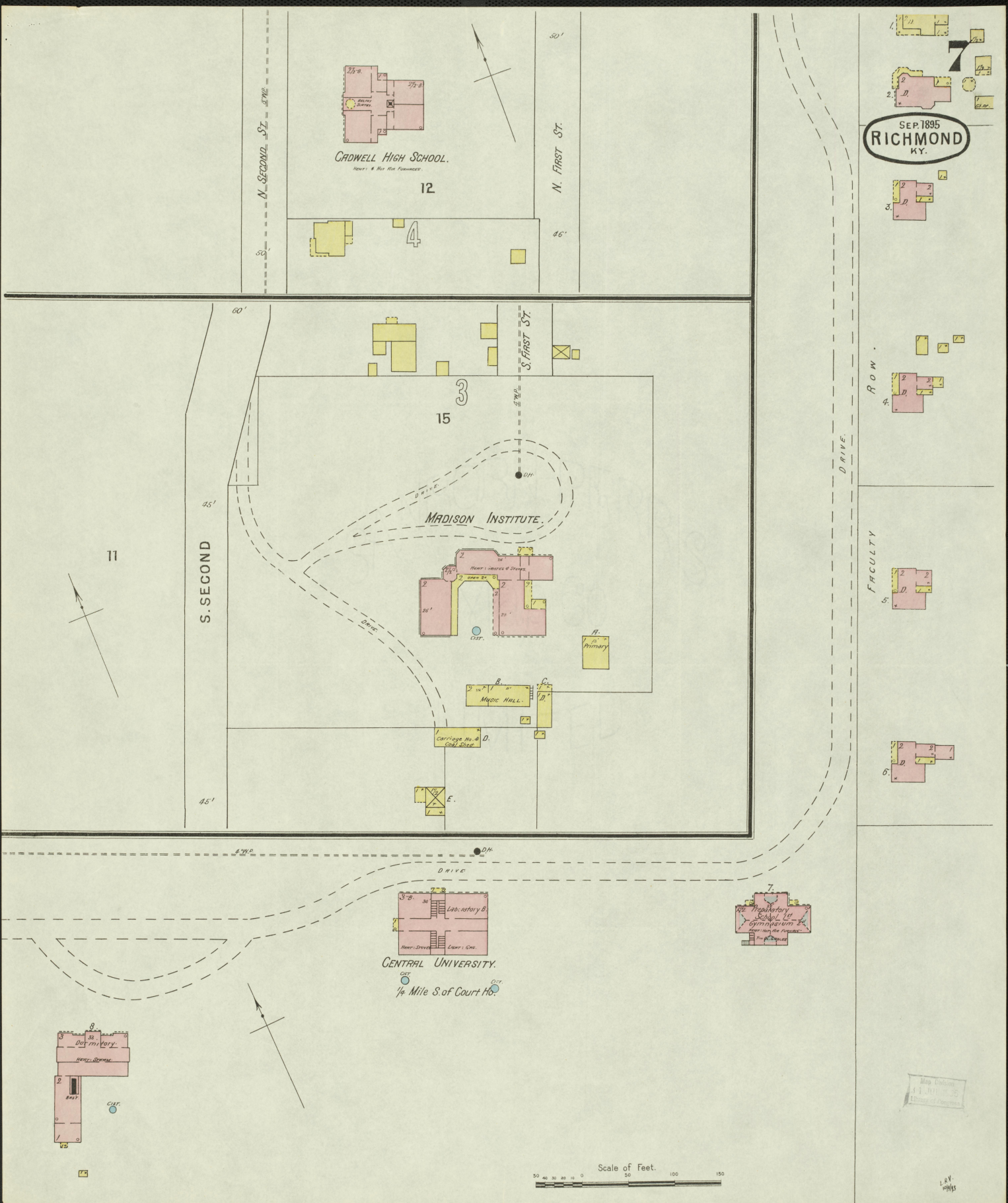
NORTH





SEP. 1895
RICHMOND
 KY.

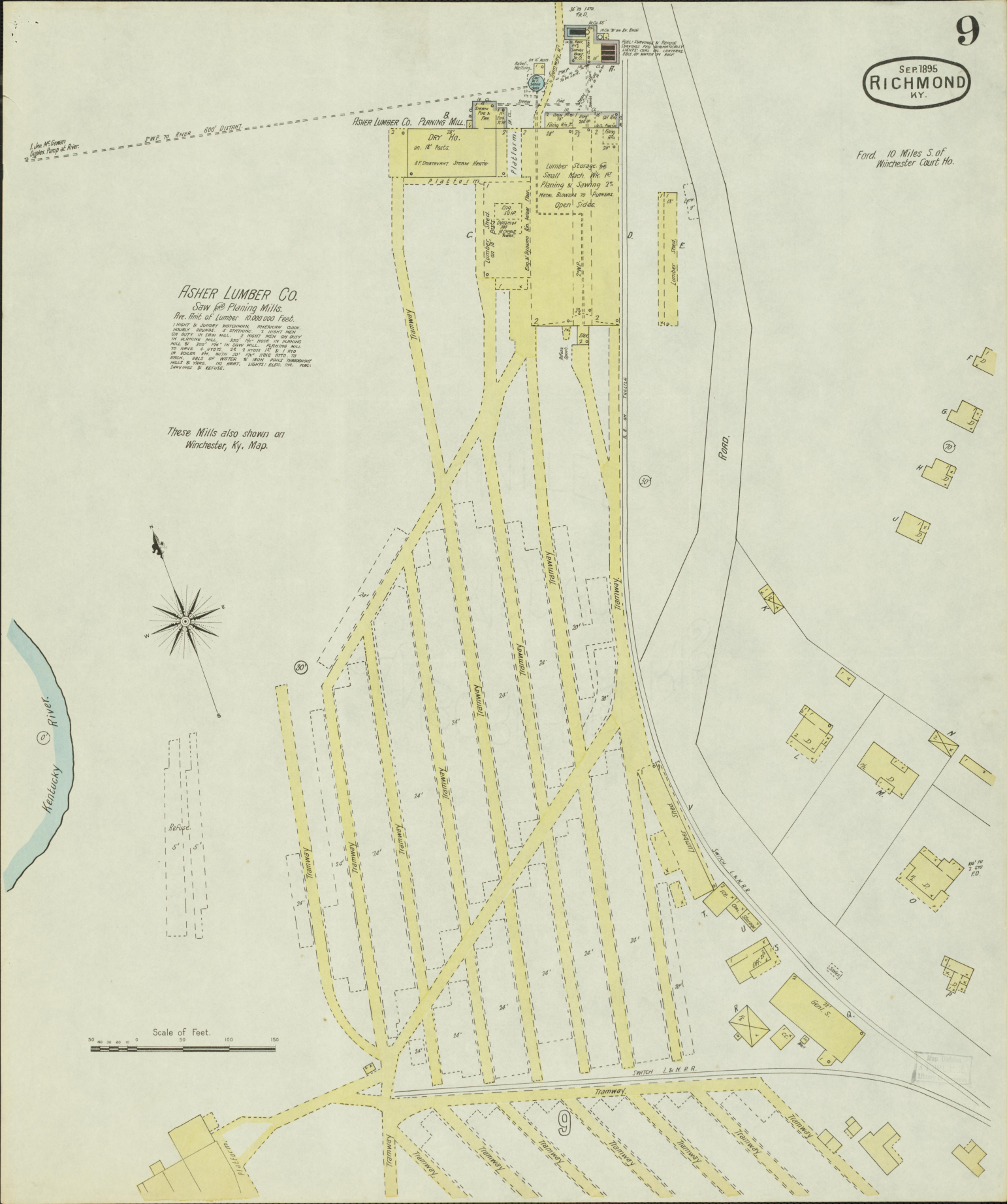
SEP. 1895
RICHMOND
KY.



SEP 1895
RICHMOND
KY.

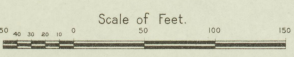
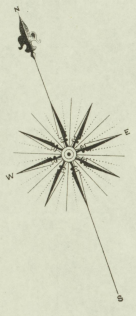
Ford, 10 Miles S. of
Winchester Court Ho.

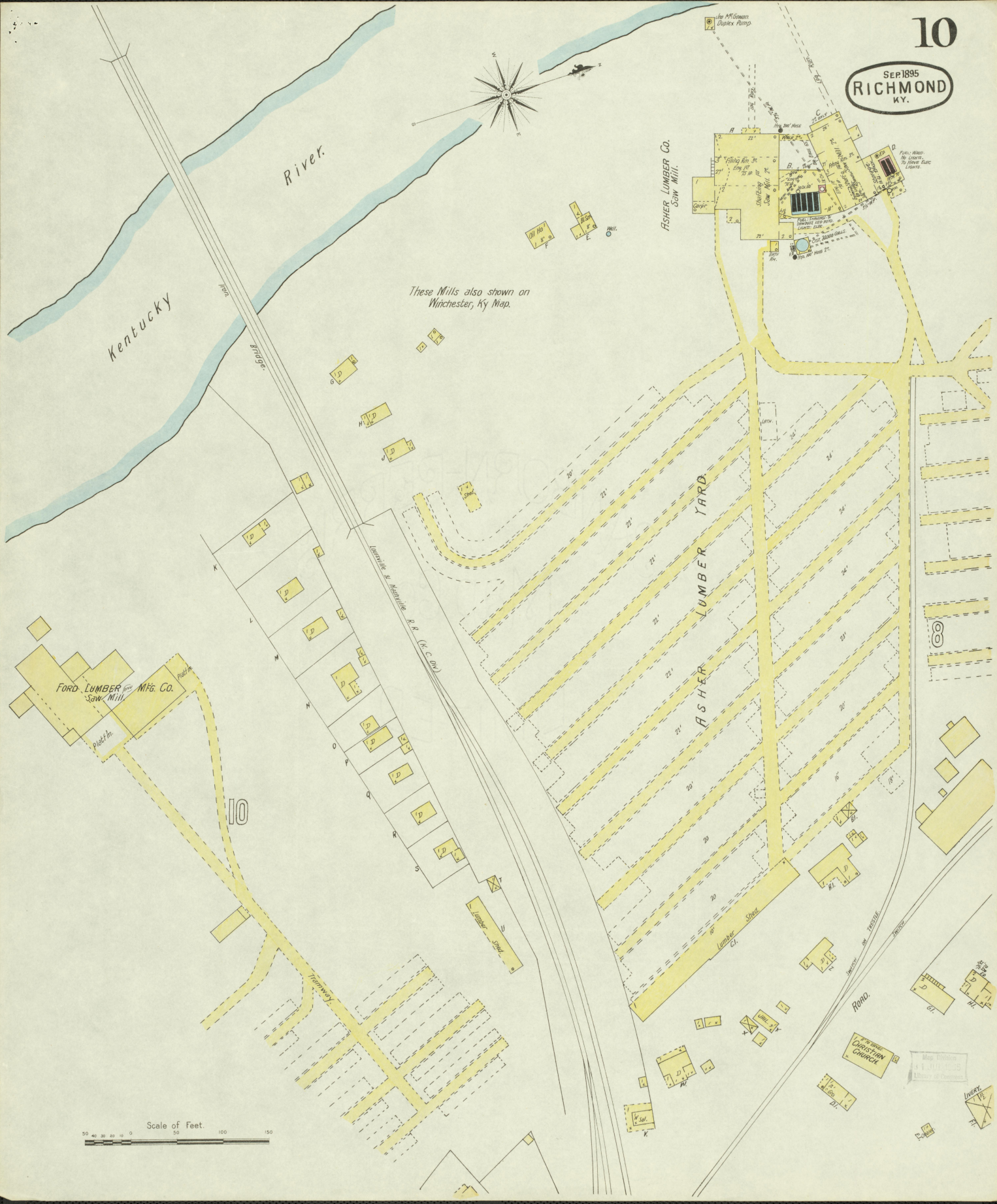
John McCombs
Engineer Plans of River



ASHER LUMBER CO.
Saw and Planing Mills.
Cap. Amt. of Lumber 10,000,000 Feet.
MIGHT BE SURVEY INTERFERED, AMERICAN CLOCK
MIGHT BE SURVEY INTERFERED, AMERICAN CLOCK
ON SITE IN 2000 FEET, 100 FEET FROM MILL, 100 FEET
ON PLANNING MILL, 100 FEET FROM MILL, 100 FEET
TO MILL, 100 FEET FROM MILL, 100 FEET FROM MILL
IN 2000 FEET, 100 FEET FROM MILL, 100 FEET FROM MILL
IN 2000 FEET, 100 FEET FROM MILL, 100 FEET FROM MILL
MILL & WKS. ON WATER IN 2000 FEET FROM MILL
MILL & WKS. ON WATER IN 2000 FEET FROM MILL
MILL & WKS. ON WATER IN 2000 FEET FROM MILL

These Mills also shown on
Winchester, Ky, Map.





Kentucky River

Kentucky River

These Mills also shown on Winchester, Ky. Map.

ASHER LUMBER CO. SAW MILL.

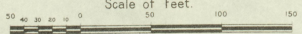
ASHER LUMBER YARD

FORD LUMBER & MFG. CO. SAW MILL.

Louisville & Nashville R.R. (L.C. & N.)

10

Scale of Feet.



CHRISTIAN CHURCH

LIVERY

Map drawn by T. H. HARRIS, Surveyor of Kentucky.

