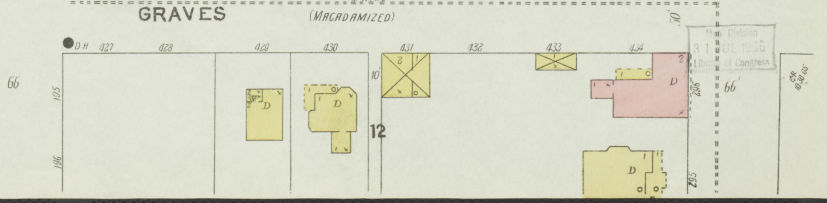
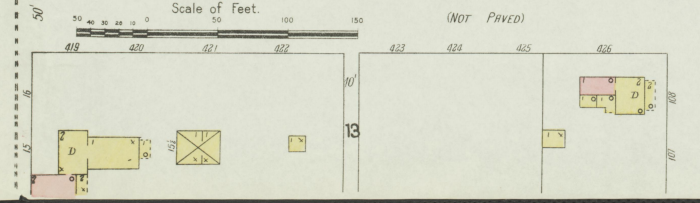
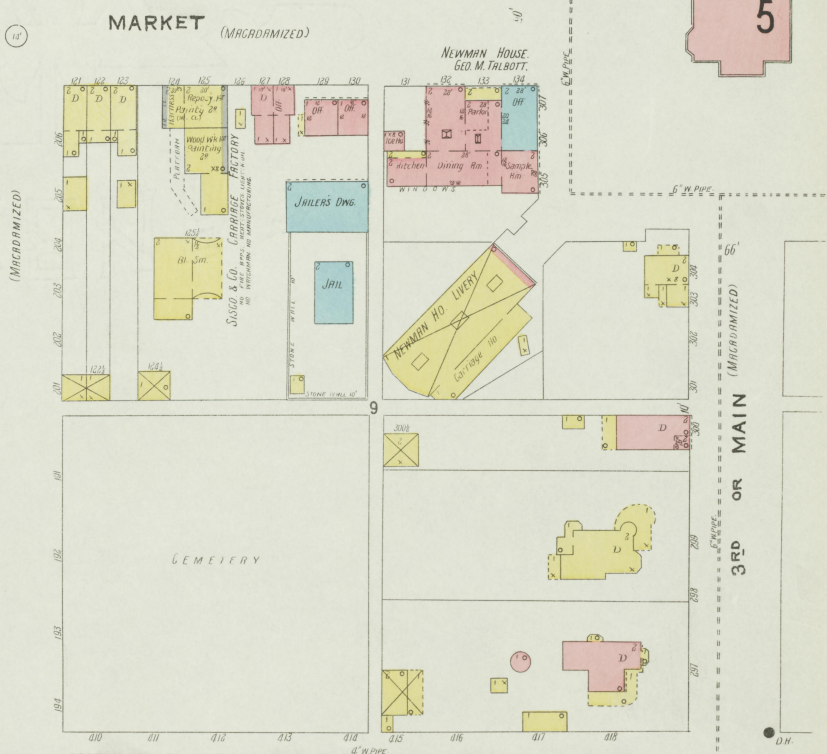
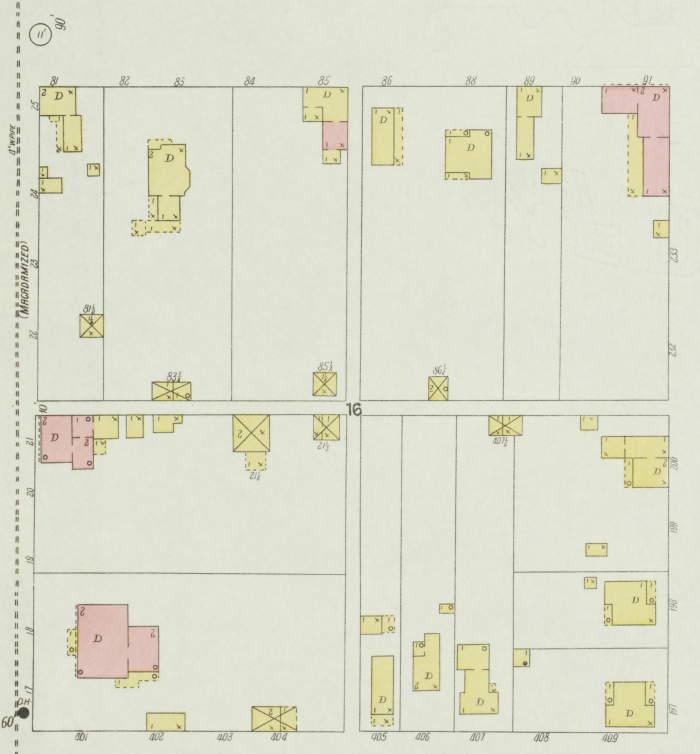
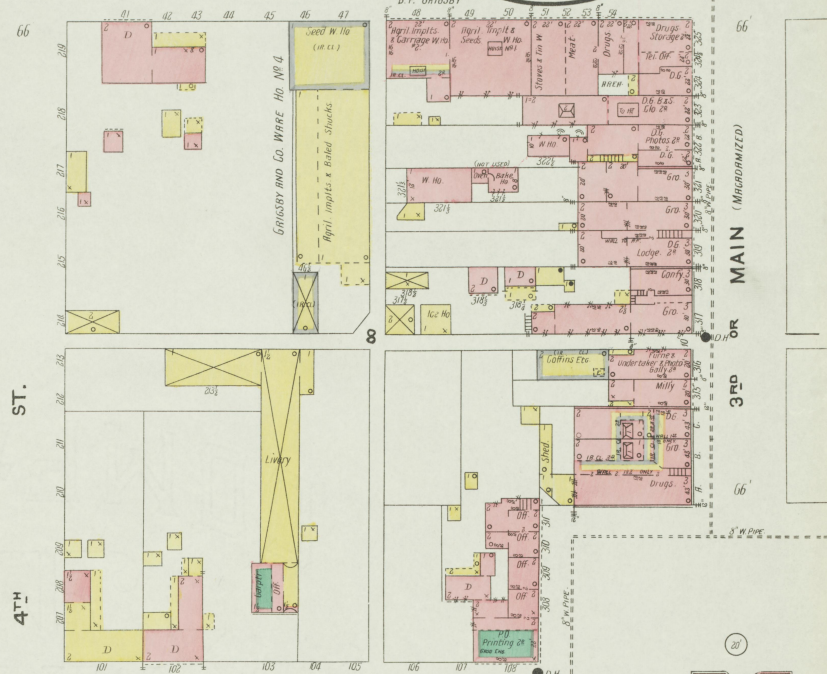
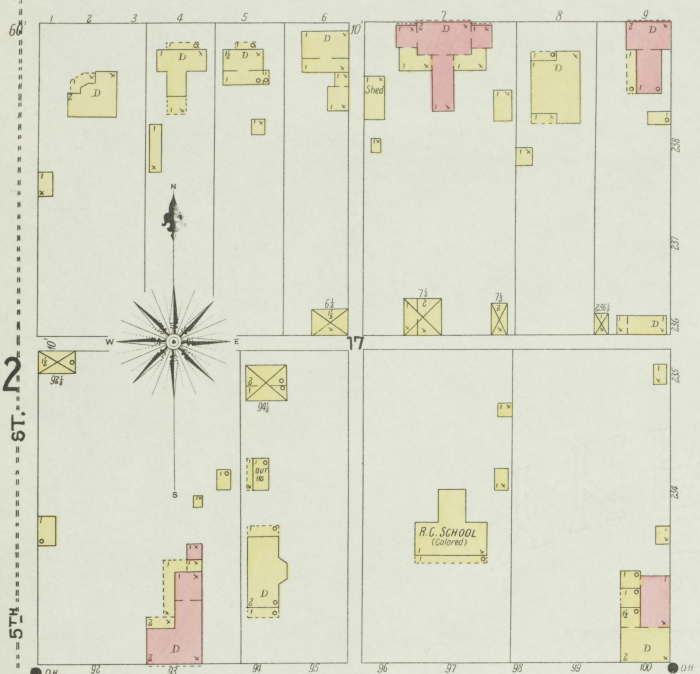


Oct. 1905  
**BARDSTOWN**  
KY.

2

4

ARCH (MACADAMIZED)



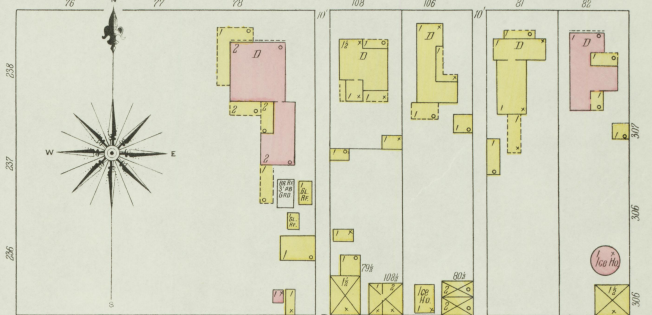
Scale of Feet.

(NOT PAVED)

Copyright  
JUL 1905  
of Bardstown

3

ARCH



ST. (Not Paved.)

MARKET

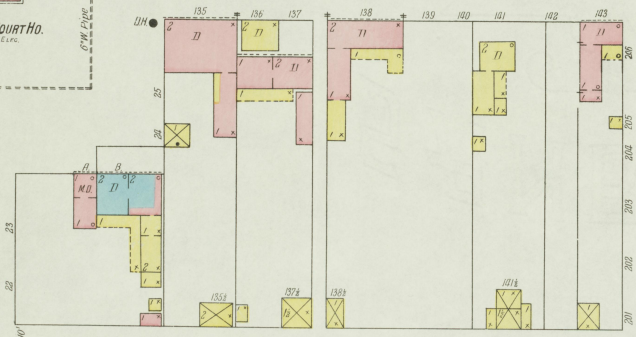


1ST

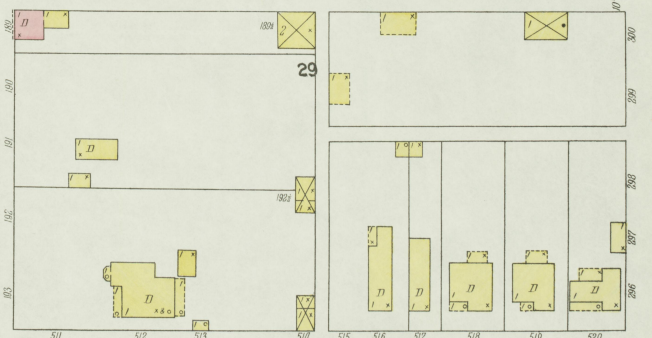
4



NELSON COUNTY COURT HO.  
HEAT, Steam, Lights, Etc.

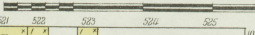


10

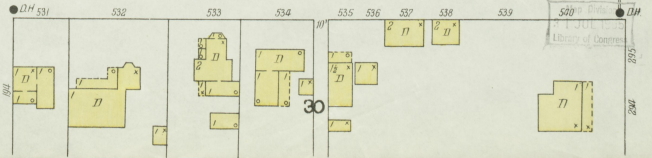


29

Scale of Feet.



GRAVES



11

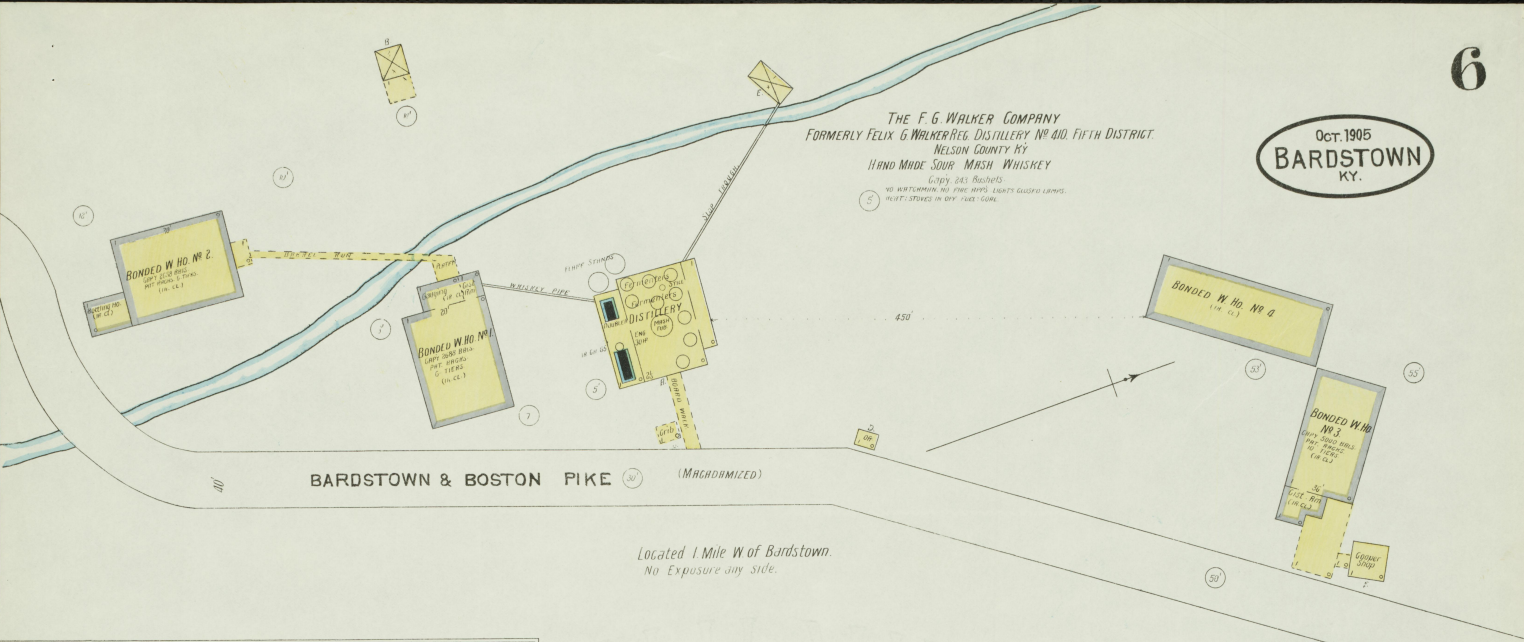
30

Library of Congress

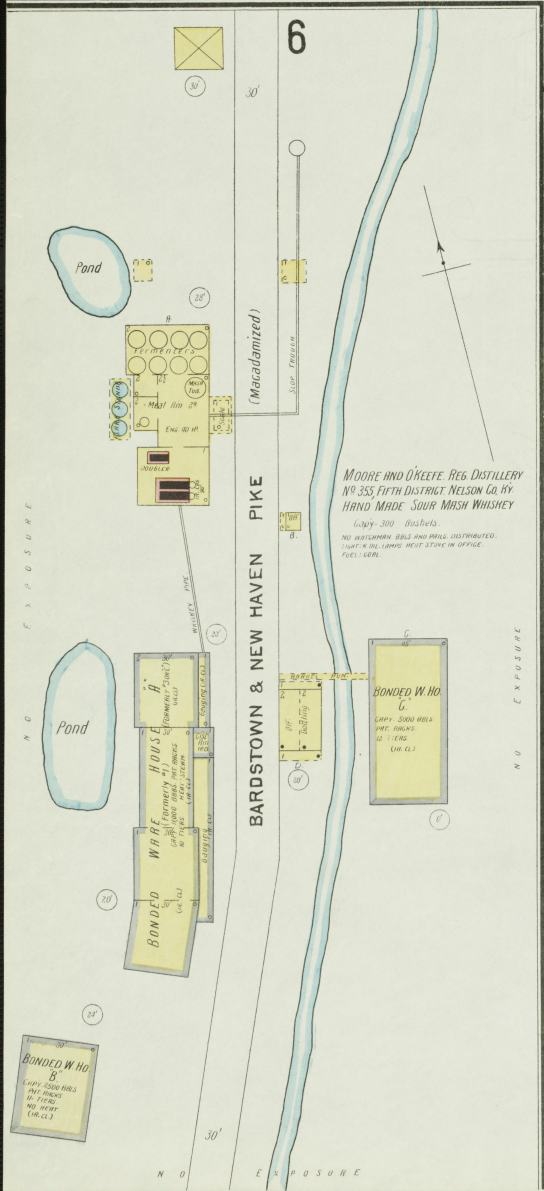
Oct. 1905  
**BARDSTOWN**  
KY.

**THE F. G. WALKER COMPANY**  
FORMERLY FELIX G. WALKER REG. DISTILLERY NO. 410, FIFTH DISTRICT,  
NELSON COUNTY, KY.  
HAND MADE SOUR MASH WHISKEY

Capacity 245 Bushels  
NO WATERMAN, NO FIRE APPS, LIGHTS, HEAT, STEAM  
FUEL, COAL

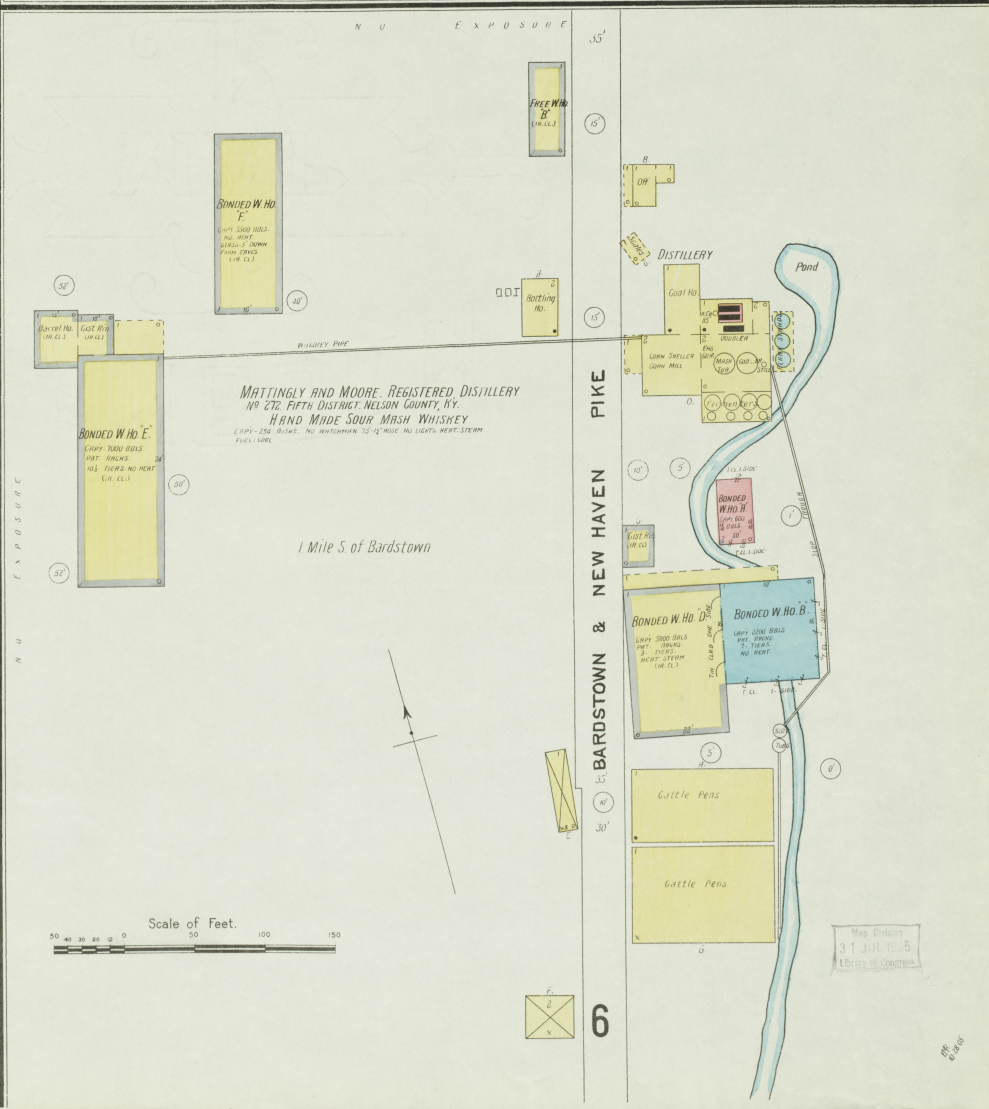


Located 1 Mile W of Bardstown.  
No Exposure any side.



**MOORE AND O'KEEFE REG. DISTILLERY**  
NO. 355, FIFTH DISTRICT, NELSON CO. KY.  
HAND MADE SOUR MASH WHISKEY

Capacity 300 Bushels  
NO WATERMAN, GAS, AND PUMP DISTRIBUTED.  
LIGHT, K. OIL, LAMPS, HEAT, STOVE IN OFFICE.  
FUEL, COAL



**MATTINGLY AND MOORE REGISTERED DISTILLERY**  
NO. 272, FIFTH DISTRICT, NELSON COUNTY, KY.  
HAND MADE SOUR MASH WHISKEY

Capacity 250 Bushels  
NO WATERMAN, NO FIRE APPS, NO LIGHTS, HEAT, STEAM  
FUEL, COAL

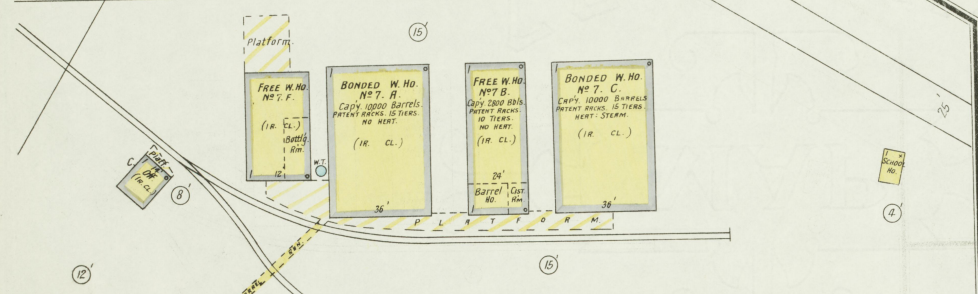
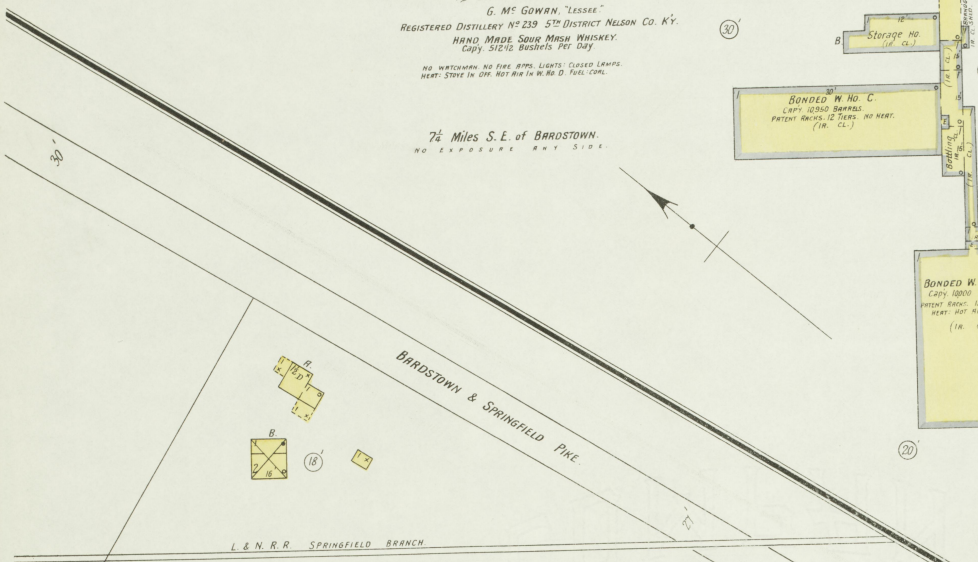
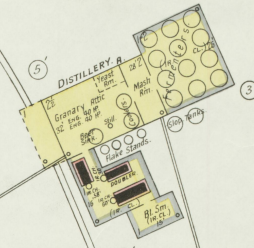
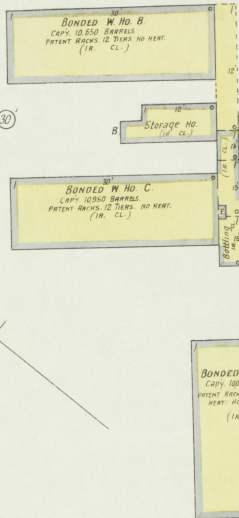
1 Mile S of Bardstown

Map Division  
31 JUL 1905  
Library of Congress

Oct. 1905  
BARDSTOWN  
KY.

**THE GREEN BRIER DISTILLERY CO.**  
G. Mc GOWAN, "LESSEE"  
REGISTERED DISTILLERY NO 239 5TH DISTRICT NELSON CO. KY.  
HAND MADE SOUR MASH WHISKEY.  
CAPY. 5700 BUSHELS PER DAY.  
NO WATCHMAN NO FEE APPS. LIGHTS CLOSED LEAVES  
HEAT STOVE IN OFF. HOT AIR IN W. HO. D. FUEL COOL.

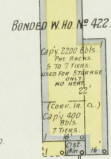
7 1/2 Miles S.E. of BARDSTOWN.  
NO EXPOSURE ANY SIDE



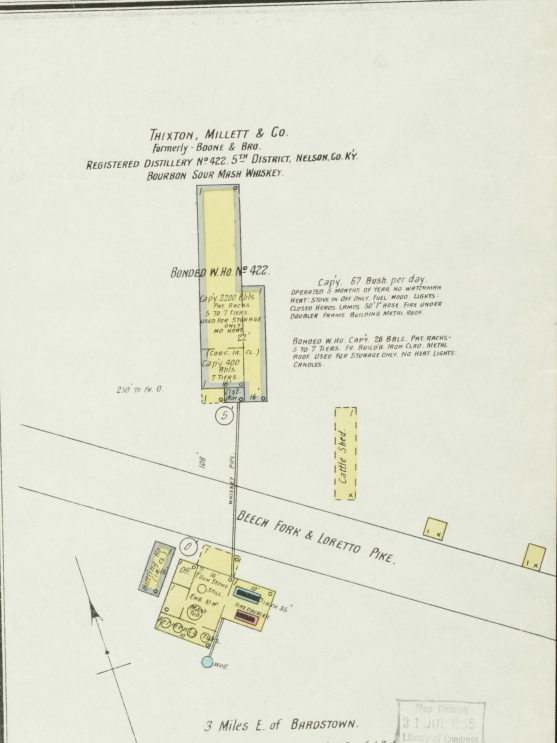
**EARLY TIMES DISTILLERY.**  
J. H. BERM, DISTILLER  
REGISTERED DISTILLERY NO 7 5TH DISTRICT NELSON CO. KY.  
HAND MADE SOUR MASH WHISKEY.  
CAPY. 600 BUSHELS - RUN 400 BUSHELS.  
NO WATCHMAN, BUCKS & BUCKETS THRO' OUT HEAT STOVE  
IN W. HO. C. NO LIGHTS FUEL COOL.

5 Miles S.E. of BARDSTOWN.  
NO EXPOSURE ANY SIDE

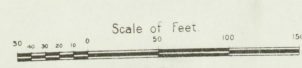
**THIXTON, MILLETT & Co.**  
Barney Boone & Bro  
REGISTERED DISTILLERY NO 422 5TH DISTRICT NELSON CO. KY.  
BOURBON SOUR MASH WHISKEY.



**BONDED W. HO. NO 422**  
CAPY. 67 BUSH PER DAY.  
OPERATED 5 HOURS OF TIME NO WATCHMAN  
HEAT STOVE IN OFF ONLY. FUEL HOOD LIGHTS  
CLOSED BUCKS LEAVES 50 TUBES. FUEL UNDER  
DOUBLE FRAME BUILDING METAL ROOF.  
BONDED W. HO. CAPY. 28 BLS. PAT BUCKS  
5 TO 7 BUCKS. FE BUCKS HIGH CLAD METAL  
HOOD USED FOR STORAGE ONLY. NO HEAT LIGHTS  
CRANKS.



3 Miles E. of BARDSTOWN.  
NO EXPOSURE ANY SIDE

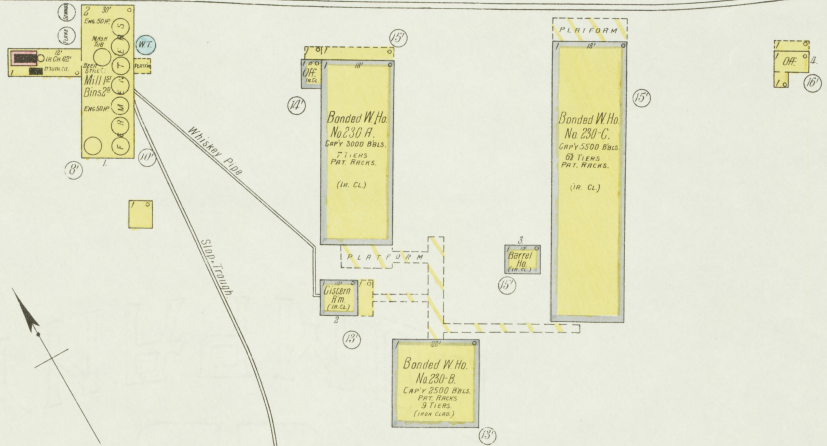
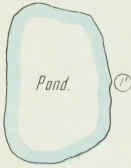


Map Platons  
31 JUL 1905  
Library of Congress

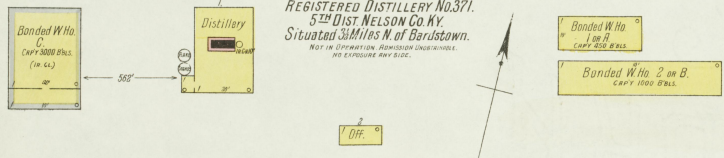
OCT. 1905  
BARDSTOWN  
KY.

Louisville & Nashville R. R. (Springfield Branch)

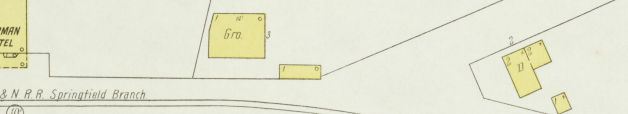
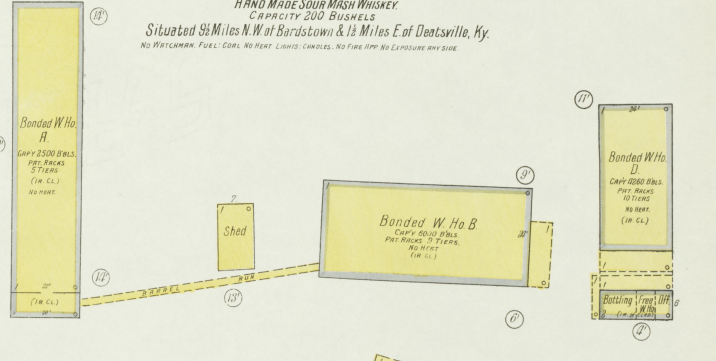
GLEAR SPRING DISTILLERY CO.  
REGISTERED DISTILLERY No. 230.  
5<sup>TH</sup> DIST. NELSON CO. KY.  
HAND MADE SOUR MASH WHISKEY.  
CAPACITY 300 BUSHELS.  
SITUATED 3 MILES N. OF BARDSTOWN.  
NO WATCHMAN. FUEL: COAL. NO HEAT. LIGHTS: NONE. STEAM: IN W. B. B. & S. DIST. IN 1897. NO EXPOSURE ANY SIDE.



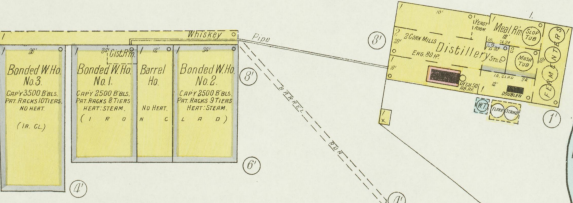
N. M. URI & Co.  
REGISTERED DISTILLERY No. 371.  
5<sup>TH</sup> DIST. NELSON CO. KY.  
SITUATED 3 1/2 MILES N. OF BARDSTOWN.  
NO WATCHMAN. FUEL: COAL. NO HEAT. LIGHTS: NONE. STEAM: IN W. B. B. & S. DIST. IN 1897. NO EXPOSURE ANY SIDE.



LESLIE B. SAMUELS as T. W. SAMUELS.  
REGISTERED DISTILLERY No. 105.  
5<sup>TH</sup> DIST. NELSON CO. KY.  
HAND MADE SOUR MASH WHISKEY.  
CAPACITY 200 BUSHELS.  
SITUATED 9 1/2 MILES N. W. OF BARDSTOWN & 1 1/2 MILES E. OF DEATSVILLE, KY.  
NO WATCHMAN. FUEL: COAL. NO HEAT. LIGHTS: NONE. STEAM: IN W. B. B. & S. DIST. IN 1897. NO EXPOSURE ANY SIDE.



L. & N. R. R. Springfield Branch



W. B. SAMUELS & Co. Inc.  
REGISTERED DISTILLERY No. 241.  
5<sup>TH</sup> DIST. NELSON CO. KY.  
HAND MADE SOUR MASH WHISKEY.  
CAPACITY 101 BUSHELS.  
SITUATED AT SAMUELS P.O. 6 1/2 MILES N. W. OF BARDSTOWN.  
NO WATCHMAN. FUEL: COAL. LIGHTS: REMOVABLE LAMP GLASS. HEAT: STEAM IN W. B. B. & S. DIST. IN 1897. NO EXPOSURE ANY SIDE.

Scale of Feet. 0 50 100 150

31 JUL 1905  
Library of Congress



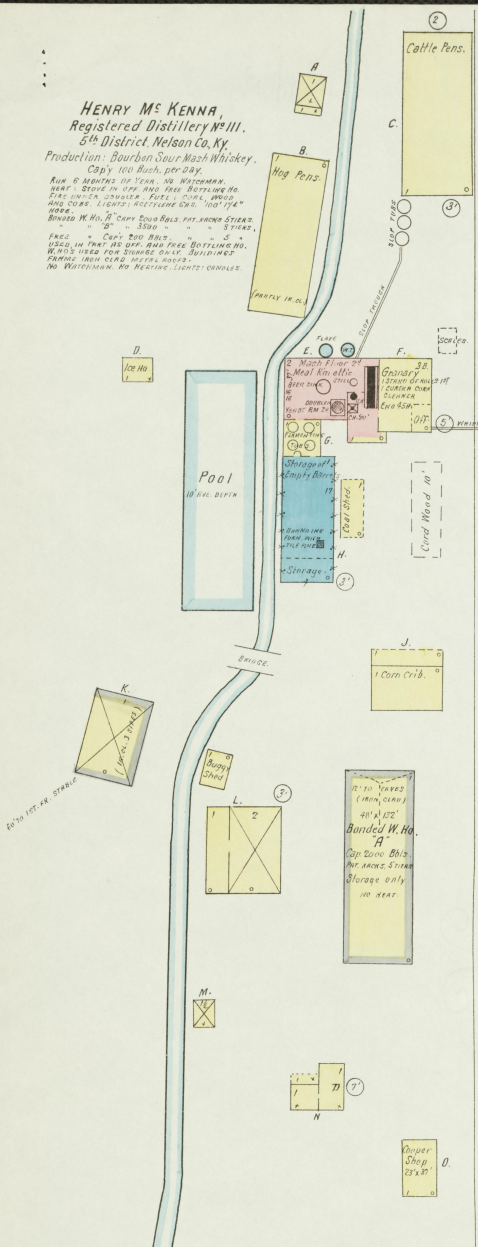
Oct. 1905  
BARDSTOWN  
KY.

AT NAZARETH, NELSON CO KY  
3 Miles N. of Bardstown.

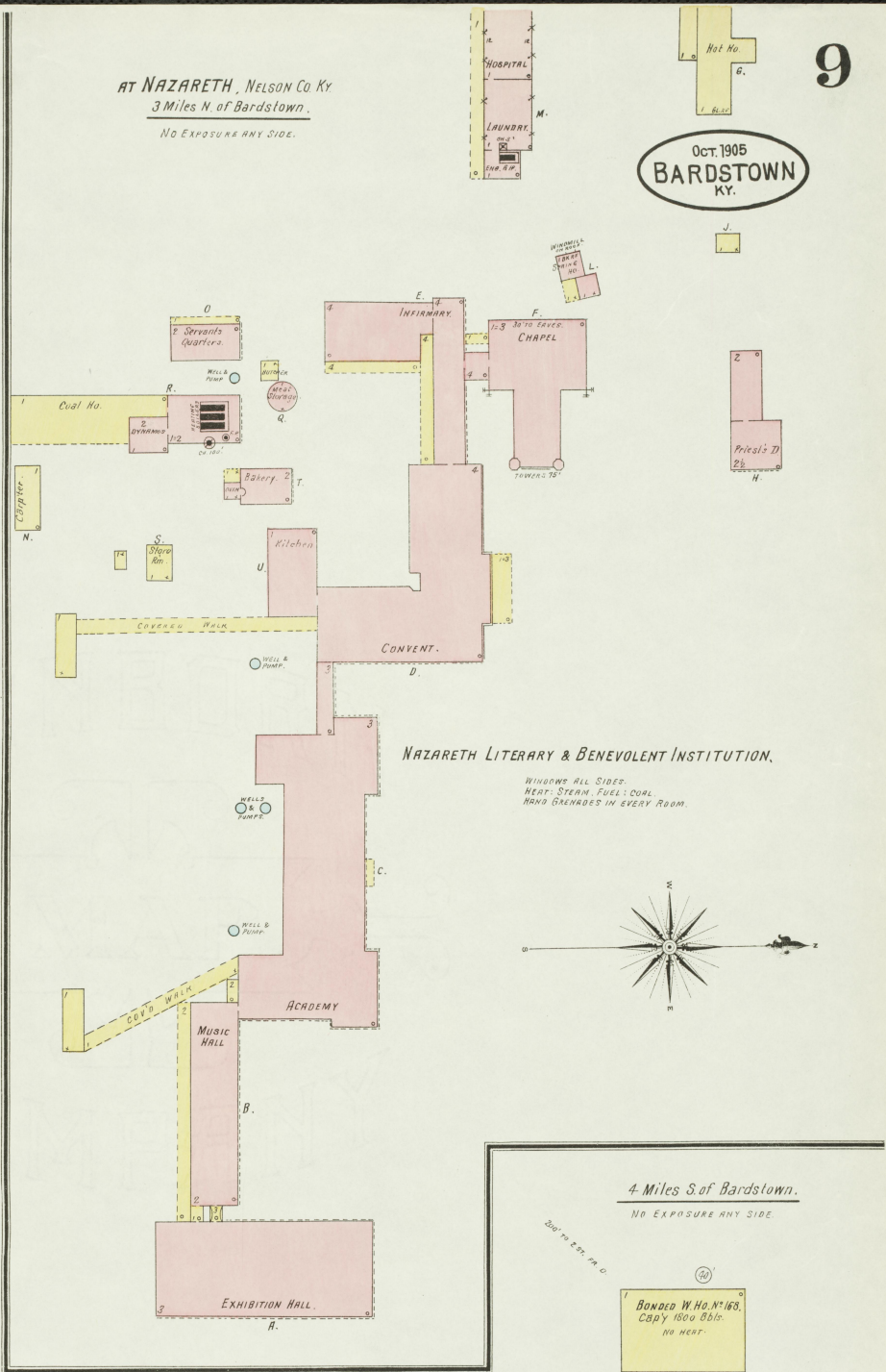
NO EXPOSURE ANY SIDE.

HENRY Mc KENNA,  
Registered Distillery No. III,  
5th District, Nelson Co, Ky.

Production: Bourbon Sour Mash Whiskey.  
Capacity 100 Bush. per Day.  
Run 5 Months of Year. No Watchman.  
No Fire in Cellar. No Fire in Warehouse.  
No Fire in Office. No Fire in Store.  
No Fire in Cellar. No Fire in Warehouse.  
No Fire in Office. No Fire in Store.  
No Fire in Cellar. No Fire in Warehouse.  
No Fire in Office. No Fire in Store.



FAIRFIELD & BLOOMFIELD TURNPIKE



NAZARETH LITERARY & BENEVOLENT INSTITUTION.

WINDOWS ALL SIDES.  
HEAT: STEAM. FUEL: COAL.  
IRON GRATES IN EVERY ROOM.

4 Miles S. of Bardstown.

NO EXPOSURE ANY SIDE.

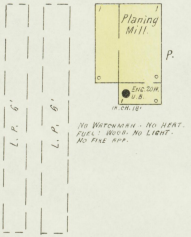
BONDED W. No. 163,  
CAPY 1500 BBLs.  
NO HEAT.

H. SUTHERLAND,  
Registered Distillery No. 168  
5th District, Nelson Co, Ky.  
Hand Made Sour Mash Whiskey.  
Capacity 40 Bushels.

NO WATCHMAN. FUEL: COAL AND WOOD.  
NO HEAT. NO LIGHT. NO FIRE APP.

AT FAIRFIELD  
12 Miles N.E. of Bardstown.

H. Mc KENNA, PLANING MILL.



Scale of Feet.  
0 50 100 150

Map Dated  
11 Jul. 1905  
Survey of Commerce