

9

APRIL 1901
HOPKINSVILLE
KY.

2

E. 14TH ST.

ST.

vacant Fields
Little River

PLANT
MILLS COMPANY
FLOUR MILL
RE-HANDLING MACHS
TANBARK & CIGARS
RE-HANDLING MACHS

NEARLY WHOLESALE POWER STEAM FUEL COAL LIGHTS ELEC OWN
DYNAMO 150HP IN ONE STEAM MOTOR 35 HP MILL NO OTHER
MOTOR. WAREHOUSE AND DOCKETS ALL OVER CITY WATER AND
DRAINAGE CLEAN AND IN GOOD REPAIR. METAL ON DRIP CURBS
TO MATCH REPAIRS.

Machinery
NOT USED
15' 10" STEAM ENGINE
3 PUMPS
3 FLOUR DRASSERS 1 TUBULAR
DRY CLEANER 15 WHEAT ROSSERS 1 BROWN
DUSTOR 1 SHOTS DUSTOR 1 CENTRIF. PRESS
1 SINKING SCREEN 1 TRANSIT INSTR.
1 SINKING SIFTER 1 FLOUR DRASSER & CYCL.
DUST COLLECTOR HEAD OF CYCL.

Grain W Ho
being built
"Fourth Party Land March 1890"

Vacant for 300'

S. CAMPBELL ST.

HARGRAVES

207

W. 1ST

LOVIER

104

ST.

W. 2ND

ST.

105

W. 3RD

ST.

112

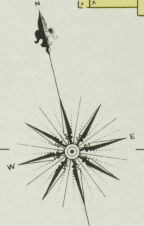
W. 4TH

ST.

About 1/2 Mile N. E. of Court Ho.

About 1 Mile N. E. of Court Ho.

Scale of Feet



N. MAIN

3

5

UNIVERSITY CHURCH
Library of Congress

Board of

Map of
JULY 1895
Library of Congress

APRIL 1901
HOPKINSVILLE
KY.

3

5

2

4

N. MAIN

N. VIRGINIA

N. LIBERTY

N. CLAY

E. 1ST ST.

E. 1ST

ST.

SHORT

103

208

210

E. 2ND

E. 2ND ST.

106

107

108

E. 3RD

ST.

111

110

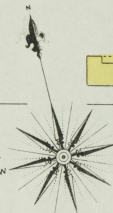
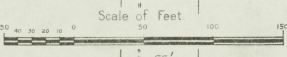
109

E. 4TH

ST.

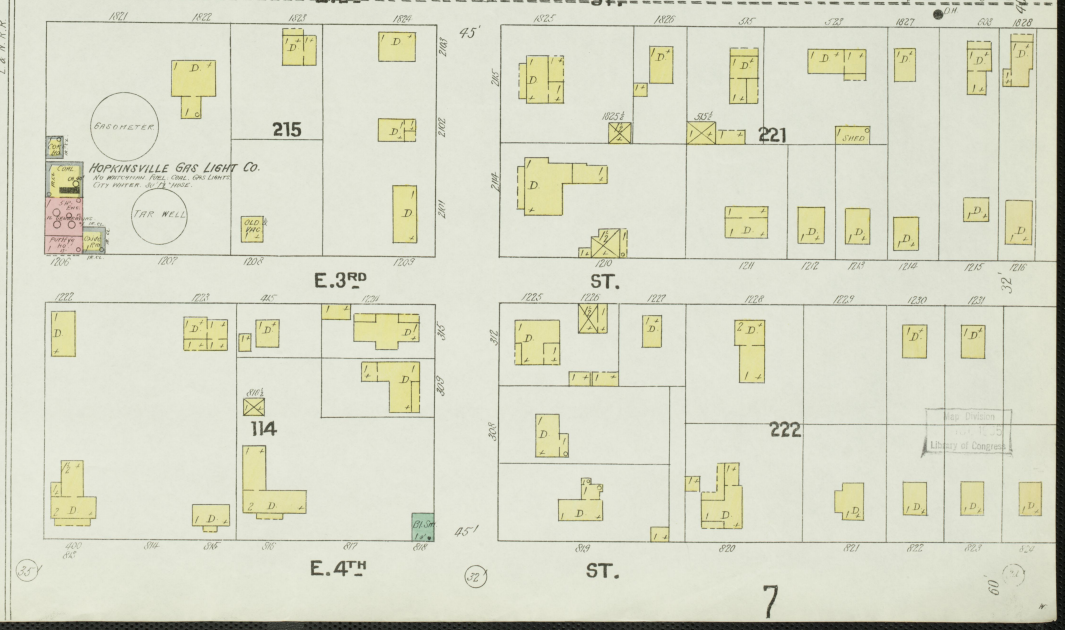
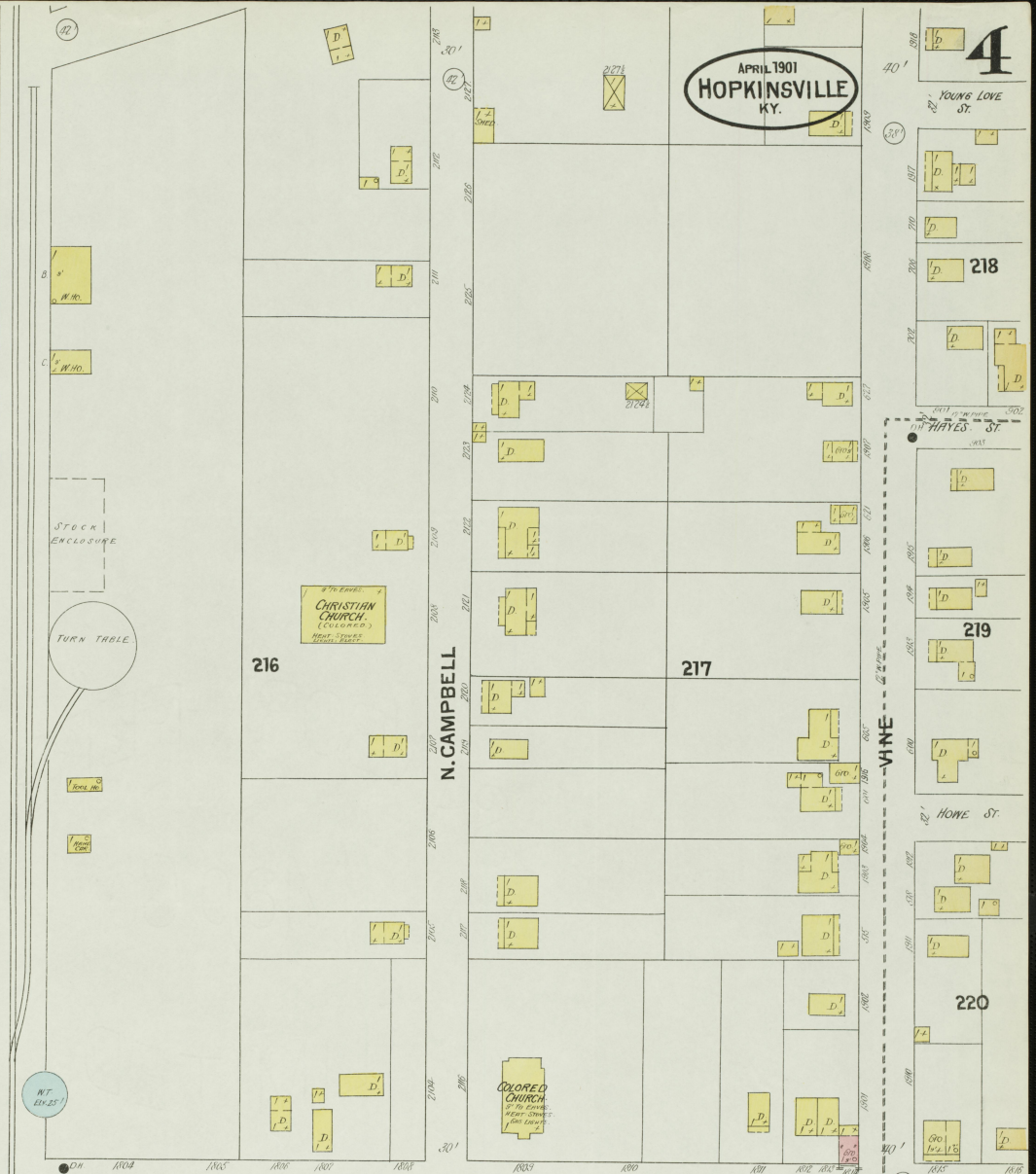
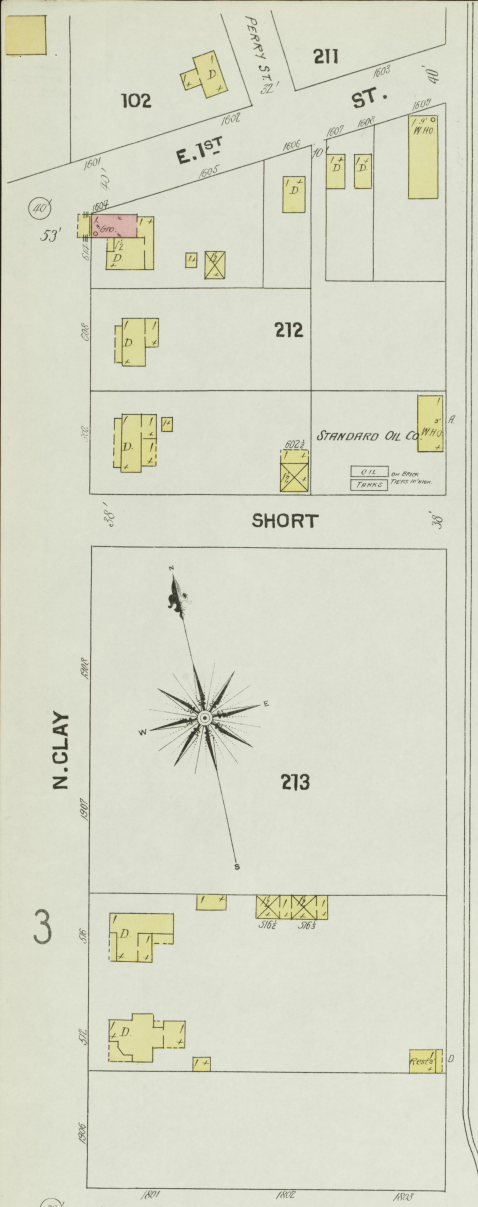
5

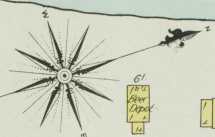
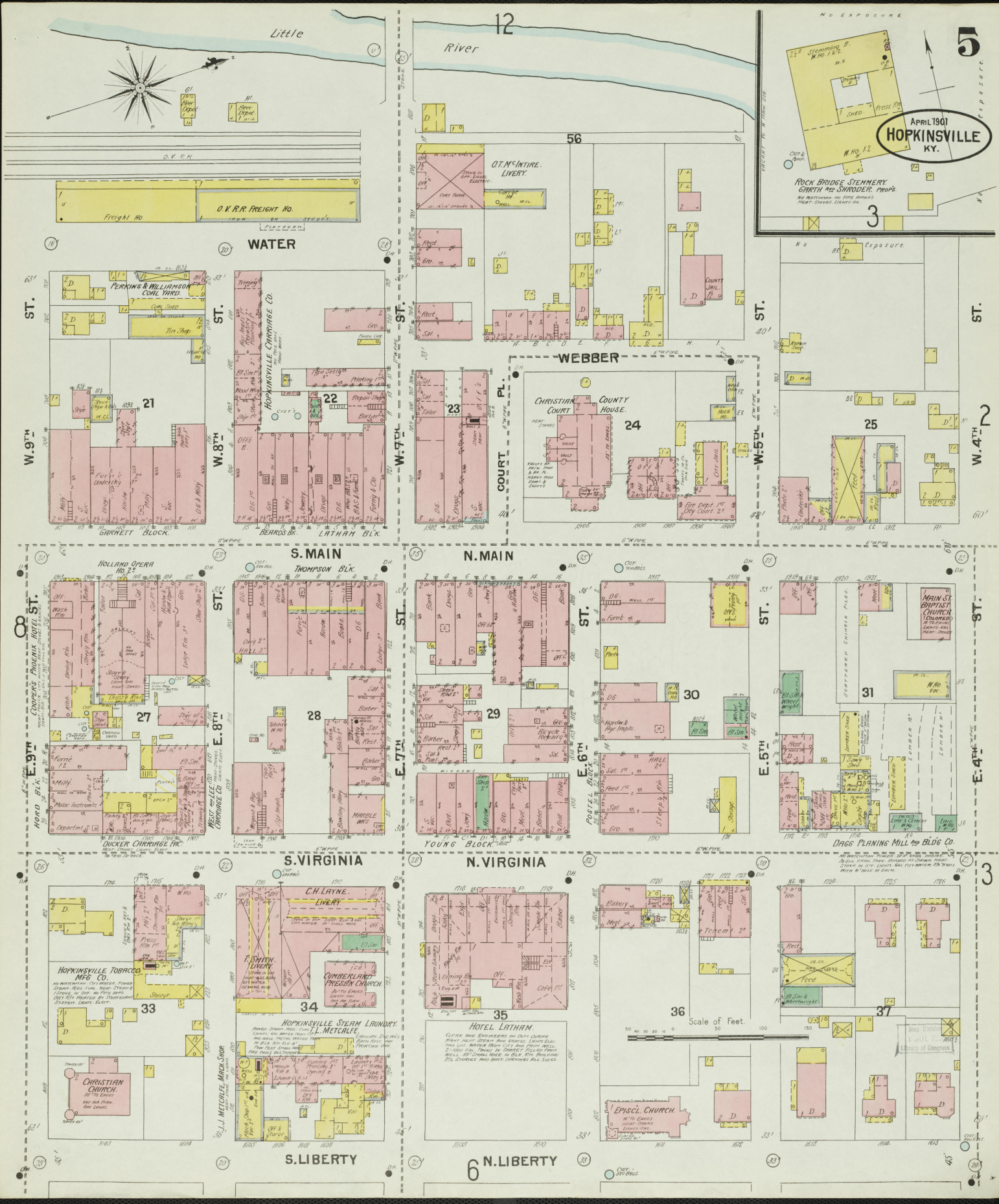
6



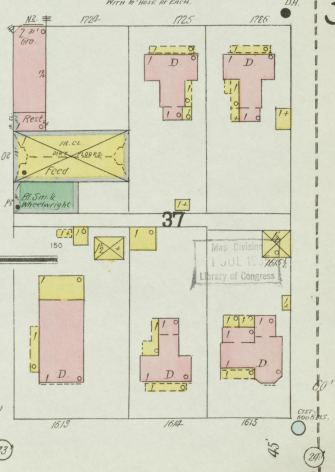
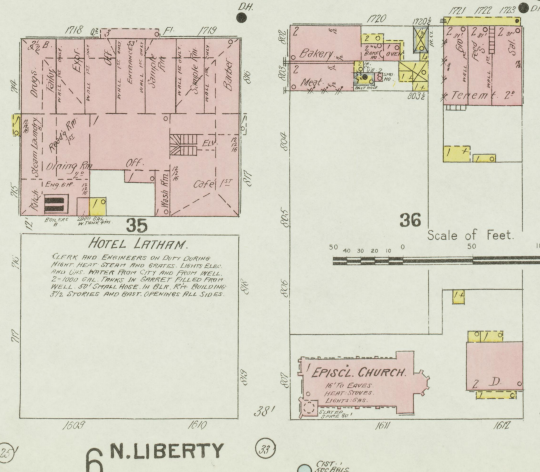
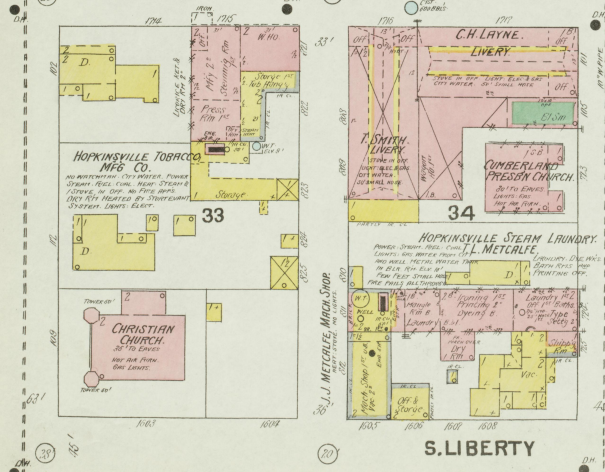
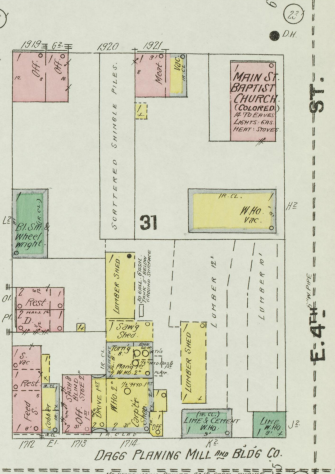
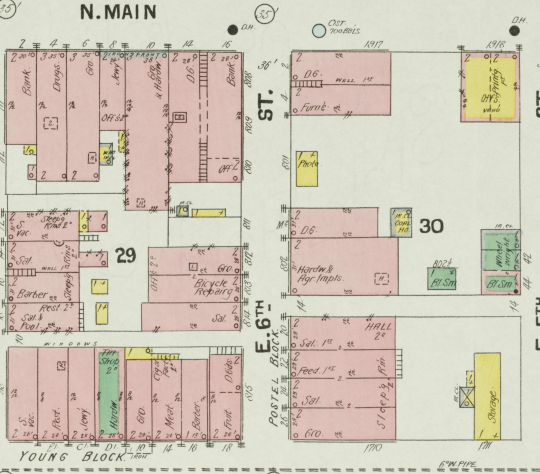
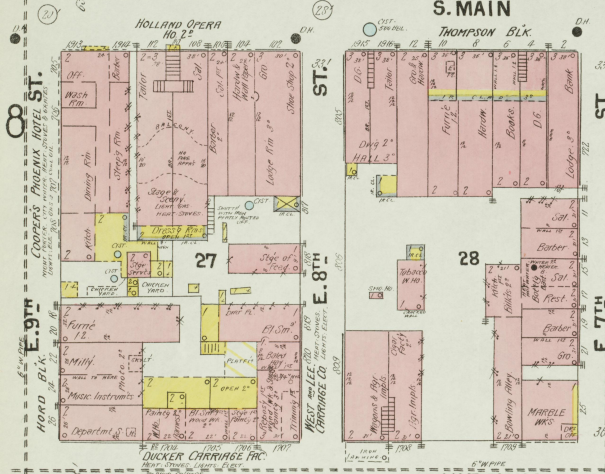
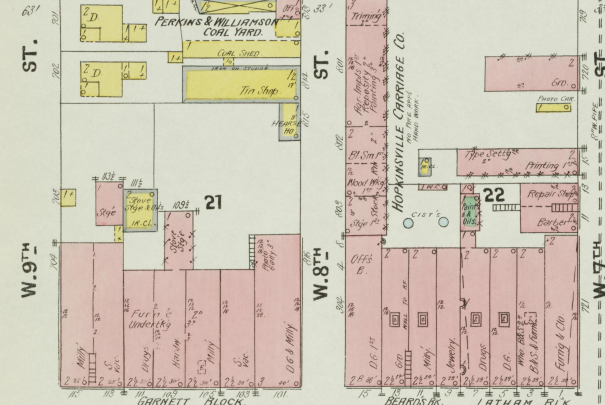
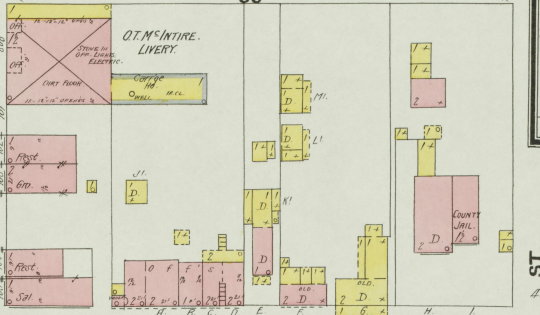
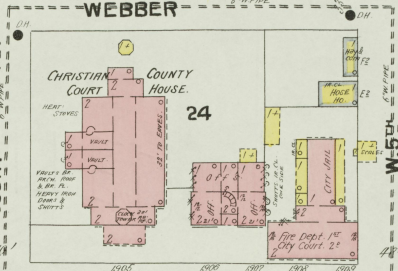
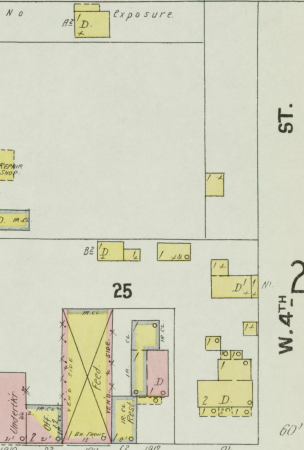
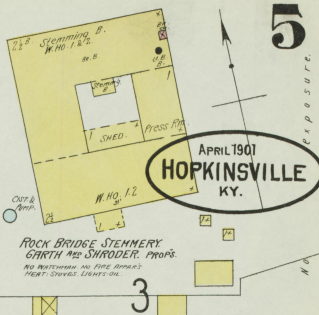
VIRGINIA ST. BAPT. CHURCH.

City of Hopkinsville
Library of Congress





APRIL 1901
HOPKINSVILLE
 KY.



Scale of Feet.
 0 50 100 150 200

3

E. 4TH ST.

ST.

PUBLIC SCHOOL

49

E. 5TH ST.

ST.

E. 6TH ST.

ST.

E. 7TH ST.

E. 7TH ST.

E. 8TH ST.

E. 9TH ST.

4

ST.

ST.

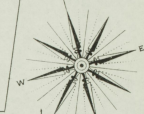
ST.

ST.

ST.

ST.

ST.



7

N. LIBERTY

N. CLAY

N. CAMPBELL

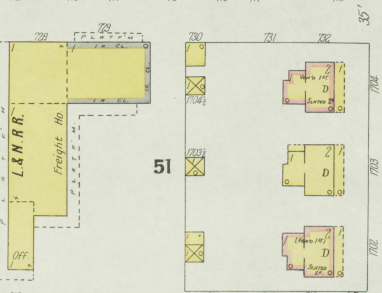
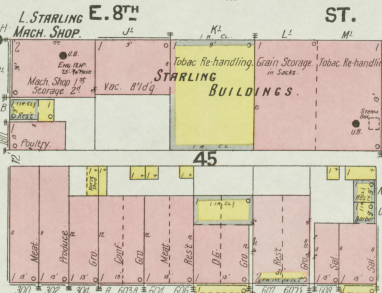
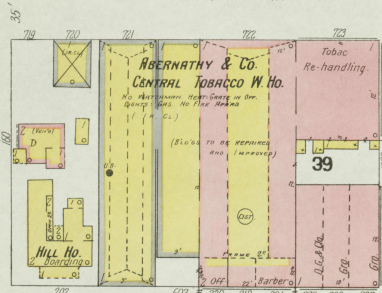
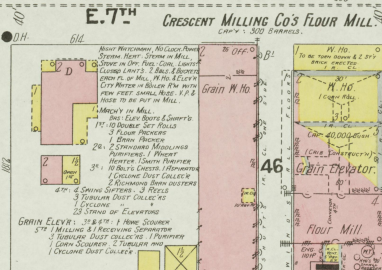
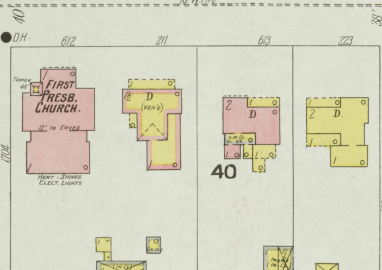
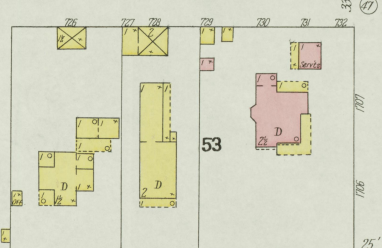
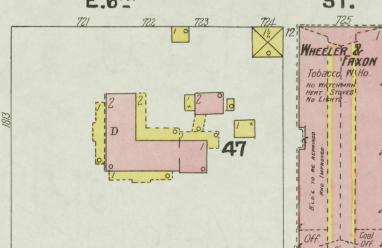
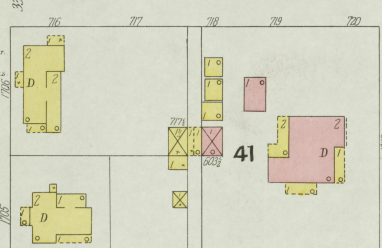
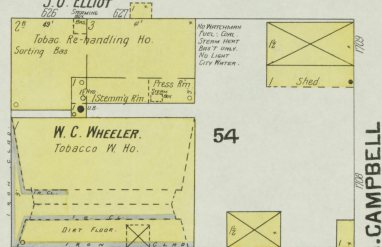
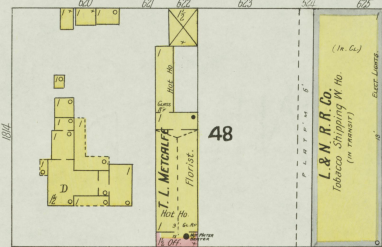
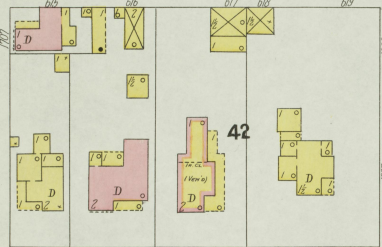
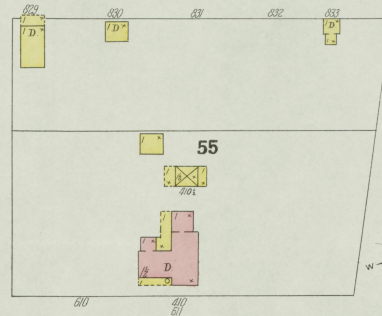
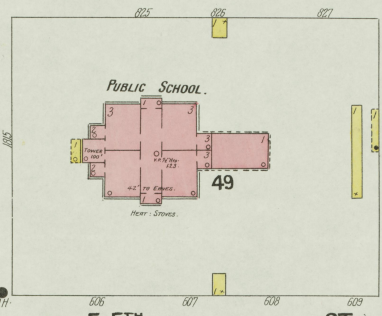
S. LIBERTY

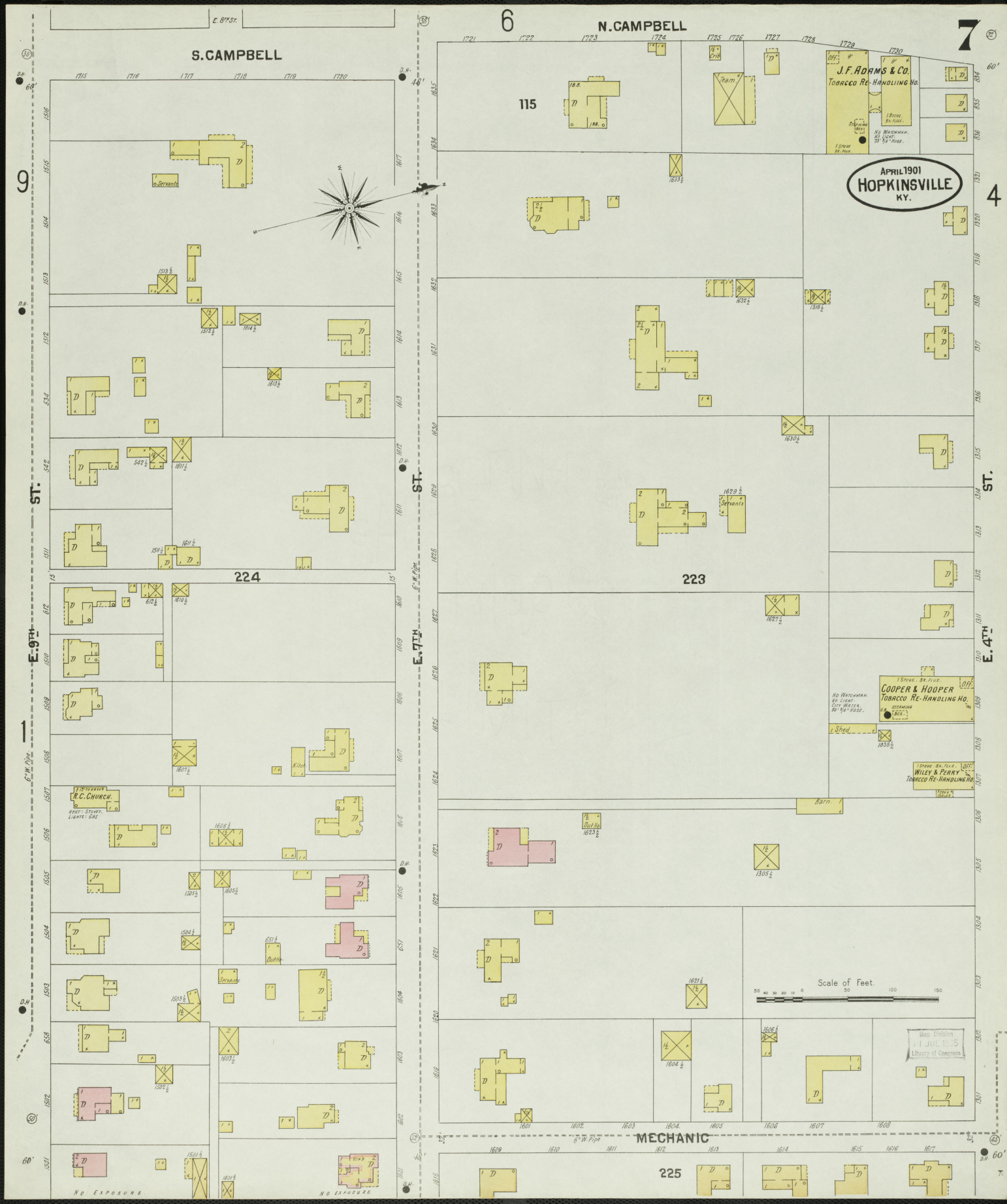
S. CLAY

S. CAMPBELL

Scale of Feet.
0 50 100 150

Map Division
JUL 1905
Library of Congress





S. CAMPBELL

N. CAMPBELL

224

223

MECHANIC

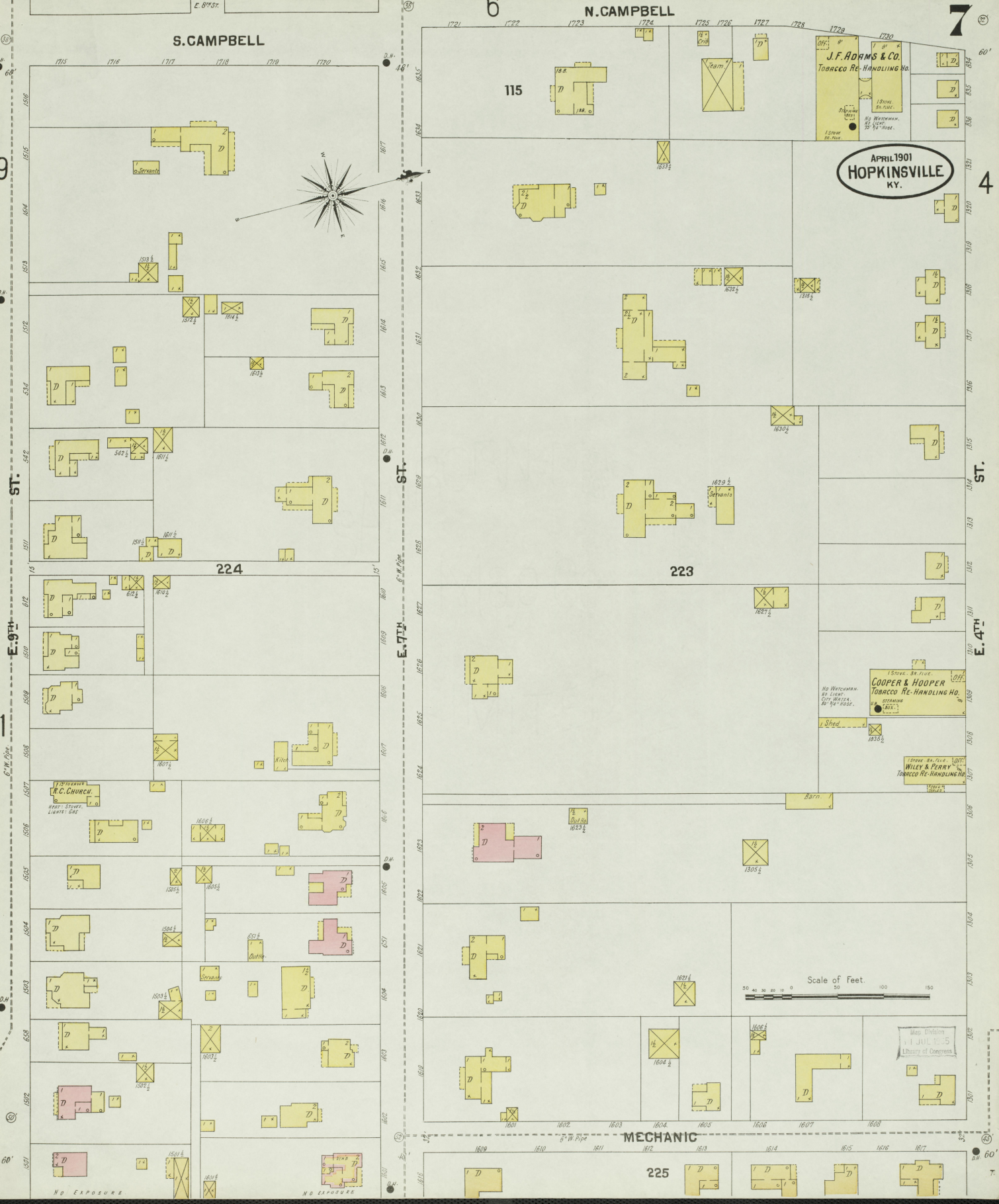
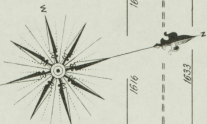
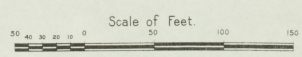
225

APRIL 1901
HOPKINSVILLE
KY.

1 Store, Br. Bldg.
No Warehouse
No Light
COY. Bldg.
No 1/2" Road.
COOPER & HOOPER
TOBACCO RE-HANDLING HO.

1 Store, Br. Bldg.
WILEY & FERRY
TOBACCO RE-HANDLING HO.

Map Division
JUL 1 1905
Library of Congress





R. E. COOPER & CO.
TOBACCO W. HO.
127th ST. HO.

R. E. COOPER & CO.
TOBACCO W. HO.
127th ST. HO.

R. E. COOPER & CO.
117th ST. TOBACCO W. HO.

R. E. COOPER & CO.
MAIN ST. TOBACCO W. HO.

WAGONS & WAREHOUSES

J. COOPER LIVERY

FORBES
Lumber W. Ho.

WAGONS & WAREHOUSES

P.O.

Scale of Feet.

Little River

O.V.R.R. Pass. Depot.

WATER

S. MAIN

S. VIRGINIA

S. LIBERTY

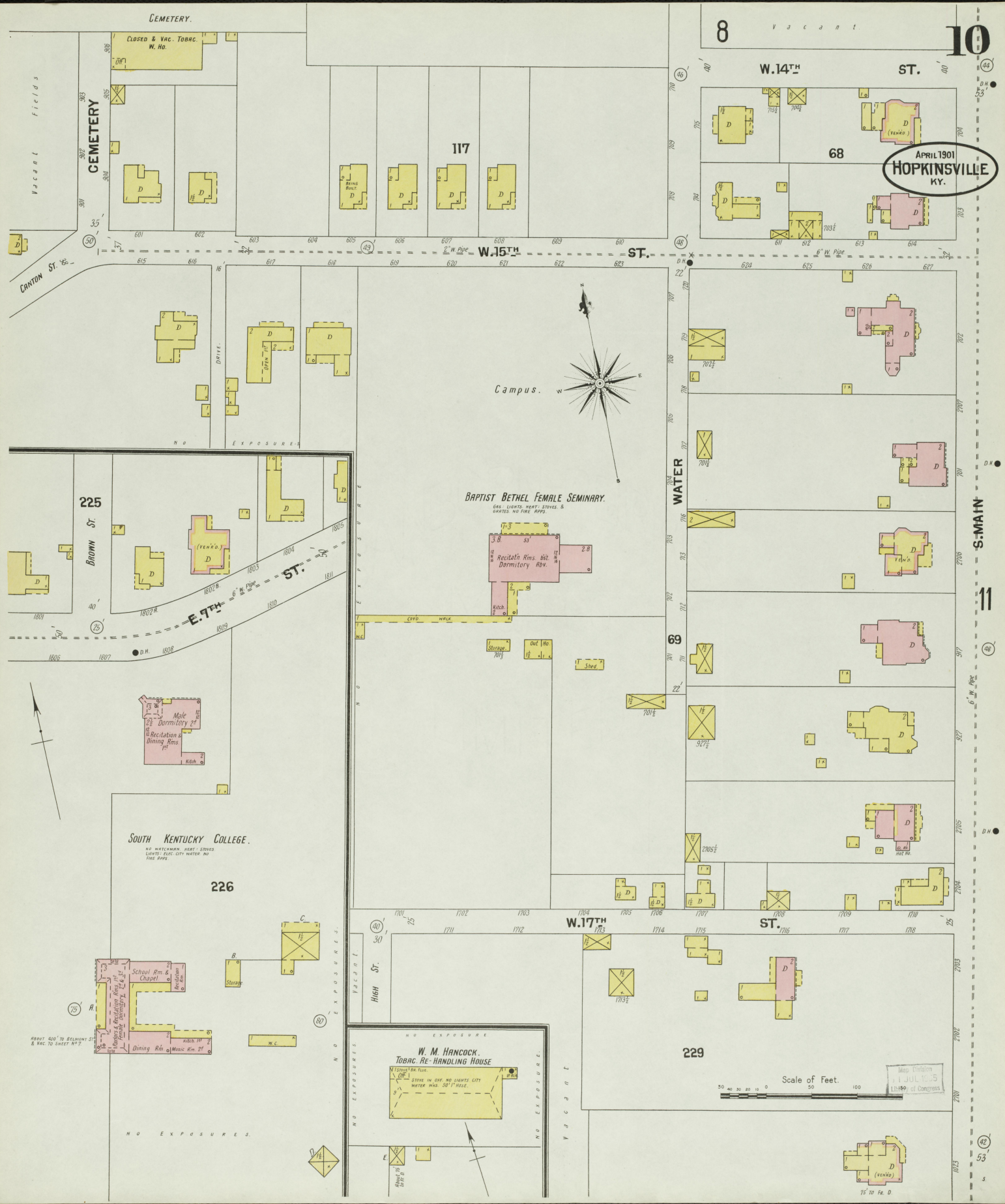
5

9

MORTON BLK.

WITHERS BLK.

MASON BLK.



CEMETERY.

VACANT FIELDS
CANTON ST. 78'

CEMETERY

CLOSED & VAC. TOBAC. W. HO.

117

W. 15TH ST.

8

W. 14TH ST.

10

68

APRIL 1901
HOPKINSVILLE
KY.

Campus.

BAPTIST BETHEL FEMALE SEMINARY.

Gas. Lights. Heat. Stoves. & Doors. NO FIRE APPS.

Recitation Rms. bat. Dormitory. Adv.

WATER

S. MAIN ST.

11

225

BROWN ST.

E. 9TH ST.

SOUTH KENTUCKY COLLEGE.

NO WETLICKMAN. HEAT. STOVES. LIGHTS. GAS. CITY WATER. NO FIRE APPS.

226

W. 17TH ST.

HIGH ST.

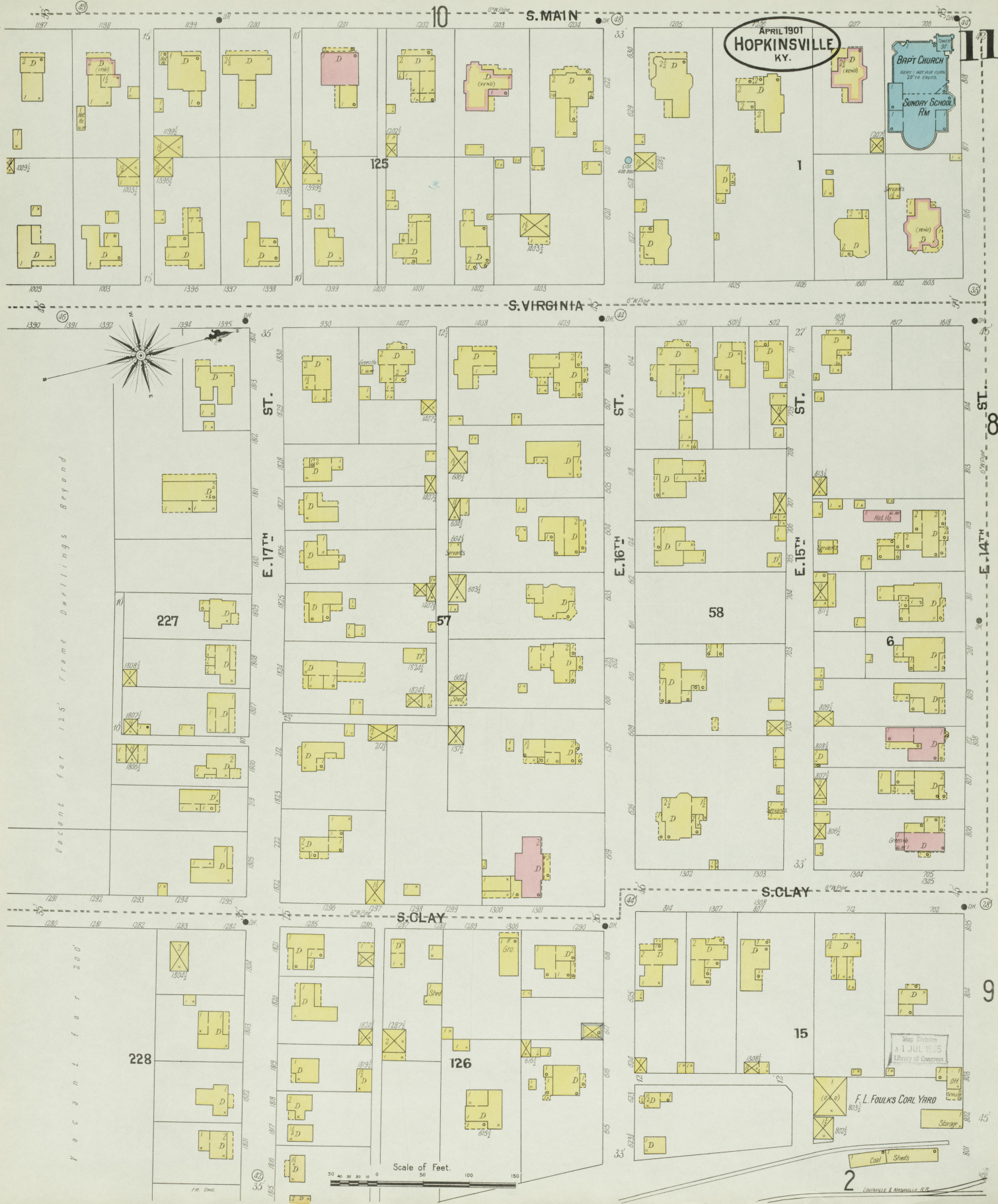
229

W. M. HANCOCK TOBACCO RE-HANDLING HOUSE

Scale of Feet.

MADE DIVISION JUL 11, 1895 13-1507 of Congress

75' TO FE. D.



APRIL 1901
HOPKINSVILLE
KY.

BAPT CHURCH
SUNDAY SCHOOL
RM

125

1

227

57

58

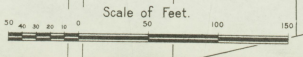
6

228

126

15

F. L. FOLKS COAL YARD
Coal Sheds
Storage



Vacant for 125' Frame Dwellings Beyond

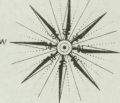
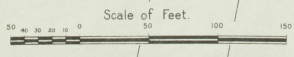
Vacant for 200'

FR. DWG.

2
COURTESY OF THE ARCHIVES

APRIL 1901
HOPKINSVILLE
KY.

12



Re-Handling 1st
Ware Room 2d
CUMMINGS & EGGLETON CO. INCORPORATED
TOBACCO RE-HANDLING HO.

W. H. SIMMONS & CO.
TOBACCO RE-HANDLING HO.

CUMMINGS & EGGLETON CO. INCORPORATED
SECCARY TOBACCO STORAGE W. HO.

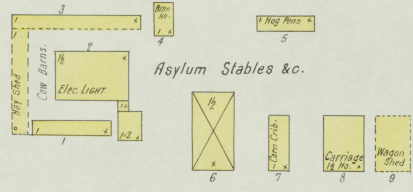
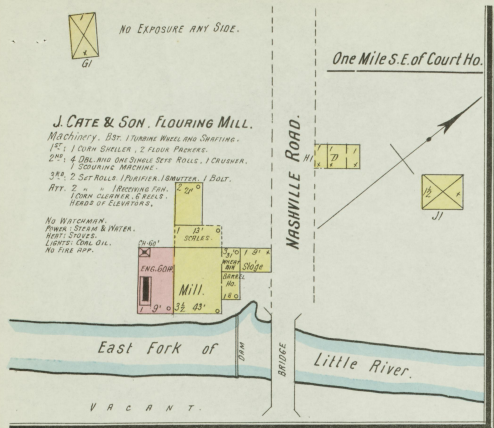
HOTEL YANCEY

UNION TABERNACLE

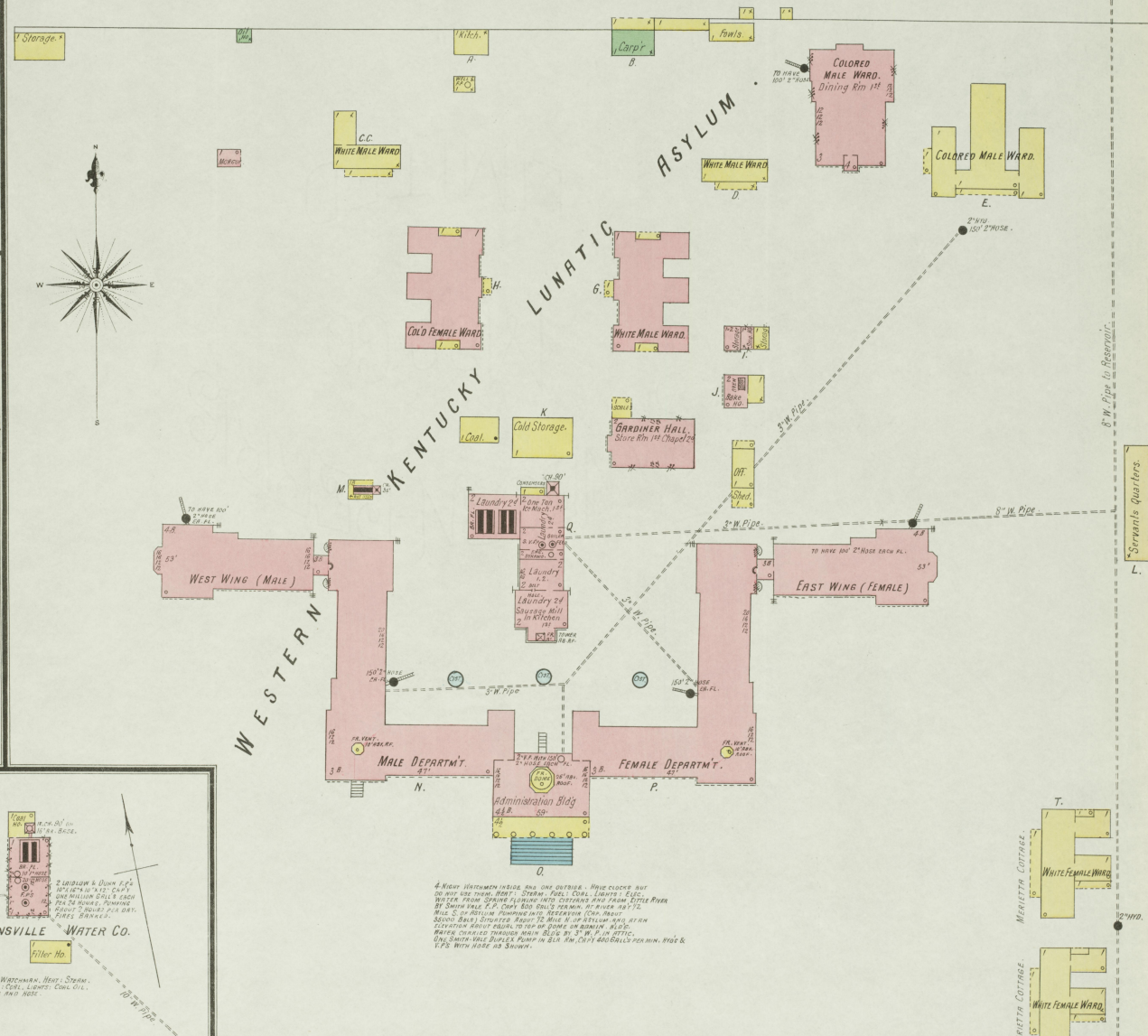
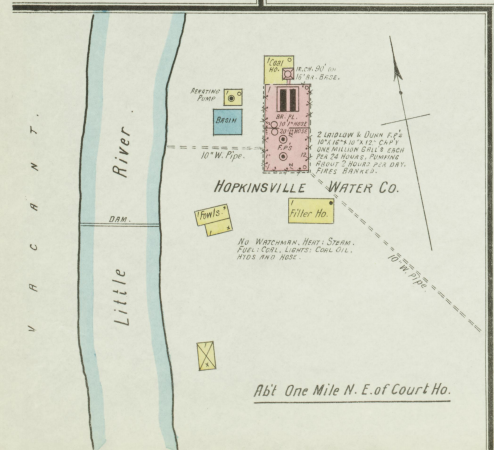
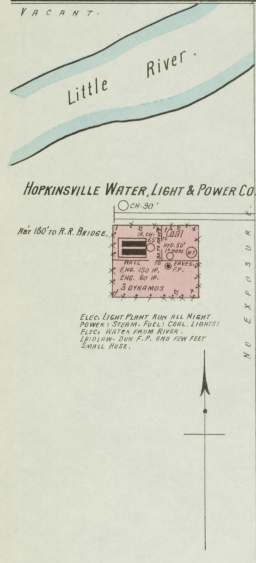
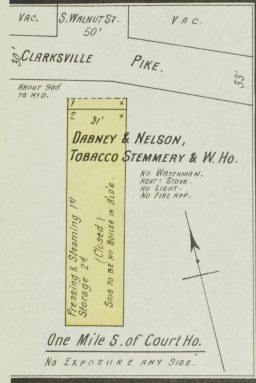
Wm. B. Whinnwright
Pickering Bros
Hatch & Co.

Map Division
JUL 1905
Library of Congress

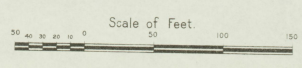
APRIL 1901
HOPKINSVILLE
KY.



2 Miles E. of Hopkinsville.



4. NO WATCHMAN INSIDE AND OUTSIDE. - WARD CLOSURE NOT TO BE MADE OVER ROOF. STEAM, FUEL: COAL. LIGHTS: GAS. WATER FROM SPRING FLOWING INTO CISTERN AND FROM LITTLE RIVER BY SHOWER PIPE. C.C. WARD BLDG. HEAVY. 10' x 12'. 20' x 20' x 12'. SECOND BLDG. STRUCTURE. 72' x 12' x 12'. 10' x 12'. WATER SUPPLY THROUGH MAIN BLDG. BY 3" W. P. IN ATTIC. ONE SHOWER PIPE PUMP IN BLDG. W. P. 400 GALLONS PER MIN. W.P. & V.P.S. WITH HOSE AS SHOWN.



Map Division S.
1 JUL 1 1901
Library of Congress