

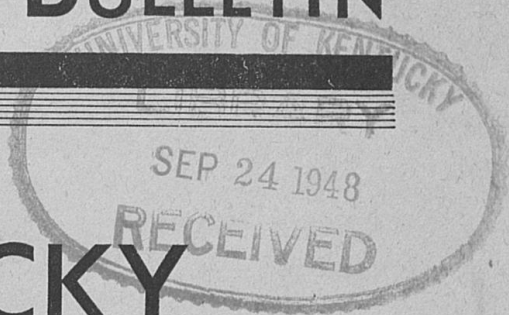
● Commonwealth of Kentucky ●

# EDUCATIONAL BULLETIN

---

---

---



# KENTUCKY HIGH SCHOOLS 1947-48



Published by  
DEPARTMENT OF EDUCATION  
BOSWELL B. HODGKIN  
Superintendent of Public Instruction

---

---

---

ISSUED MONTHLY

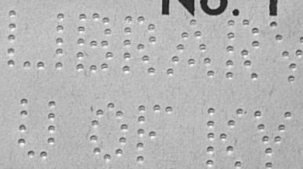
Entered as second-class matter March 21, 1933, at the post office at Frankfort, Kentucky, under the Act of August 24, 1912.

Vol. XVI

MARCH, 1948

No. 1

273262



## FOREWORD

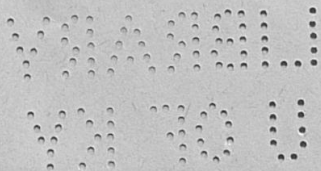
Each year, the State Department of Education through its Division of Supervision prepares and issues this bulletin which is designed to give pertinent information regarding the high schools of the state.

High schools in Kentucky, both public and private, are accredited each year by the State Board of Education. The official rating given each high school by the State Board of Education is made as a result of the recommendations of the Commission on Secondary Schools of the Kentucky Association of Colleges and Secondary Schools.

It is hoped that superintendents and principals will study the material found in this publication. The material was prepared by Mark Godman and Sam Taylor of the Division of Supervision.

B. B. HODGKIN

*Superintendent of Public Instruction*



## KENTUCKY HIGH SCHOOLS—1947-48

*Schools and Types of Organizations.* There are 643 high schools in Kentucky. This number is in contrast to 648 that operated last year. These high schools are of various types of organizations. Of the 643 high schools now operating, 590 are complete organizations in that they offer work through the twelfth grade. The remaining 53 high schools, because they do not offer work through the twelfth grade, are considered incomplete, feeder organizations. Of the 53 incomplete organizations, 37 are separate junior high schools, organized as one distinct unit offering work exclusively in grades seven, eight, and nine. The remaining 16 high schools are incomplete organizations that offer work only through the tenth or eleventh grades.

Of the 590 complete high schools, 342 are operated by county boards of education while 171 are maintained by boards of education in independent school districts. The remaining 77 complete organizations are either private secondary schools or schools that are operated by the state in connection with institutions that are maintained entirely by the state.

This year the six-year high schools (grades 7-12) number 276 while the traditional four-year high schools (grades 9-12) number 284. The other 30 complete organizations represent a modification of the six-year or four-year type of organization.

The following table present data regarding the number of the various types of high school organizations to be found in the state.

**Table I**  
**TYPES OF HIGH SCHOOL ORGANIZATIONS AND NUMBER OF EACH**

Types of Organization	County Districts	Independent Districts	Private Schools	State or Regional	Total
Grades 7-12....	167	95	9	5	276
Grades 9-12....	166	63	54	1	284
Grades 8-12....	7	4	7	0	18
Grades 10-12....	2	9	1	0	12
Grades up to 11....	1	0	2	0	3
Grades up to 10....	11	0	1	1	13
Grades up to 9....	16	20	1	0	37
Totals .....	370	191	75	7	643

The table above not only shows the number of different types of high schools to be found in the state but it also indicates the number of high schools operating under different types of control. It will be noted that 370 (three fewer than last year) are operated by county boards of education while 191 (four fewer than last year) are maintained by boards of education in independent school districts. Private secondary schools number 75, an increase of two above the number in operation last year.

**Table II**  
**HIGH SCHOOL ENROLLMENTS BY GRADES, RACE, AND CONTROL**

Grades	County District		Independent District		State or Regional		Private		Total
	White	Negro	White	Negro	White	Negro	White	Negro	
7	6,458	105	7,163	1,735	161	0	109	0	15,731
8	6,662	100	6,998	1,485	146	0	283	0	16,674
9	14,888	203	10,385	2,098	185	111	3,211	25	31,106
10	13,302	164	9,035	1,758	162	96	3,067	23	27,607
11	9,269	115	7,408	1,270	140	69	2,724	13	21,008
12	8,631	69	6,738	1,229	145	59	2,544	16	19,431
7-12	59,210	756	47,727	9,575	939	335	11,938	77	130,557
Percentages	45.35	.58	36.56	7.33	.72	.26	9.14	.06	100.00

**Table III**  
**COMPLETE HIGH SCHOOL ORGANIZATIONS GROUPED ACCORDING TO SIZE, RACE, AND CONTROL**

Size	County District		Independent District		State		Private		Total	Percent
	W	C	W	C	W	C	W	C		
59 and below	8	2	0	7	0	0	16	0	33	5.8
60-99	75	3	15	15	0	0	10	1	119	20.0
100-199	163	3	43	16	2	0	26	0	253	42.9
200-299	61	0	27	4	2	0	8	0	102	17.1
300-399	16	0	17	1	0	1	2	0	37	6.3
400-499	9	0	7	0	0	0	3	0	19	3.3
500 and over	5	0	17	2	0	0	3	0	27	4.6
Totals	337	8	126	45	4	1	68	1	590	100.0

*Information Concerning High School Development.* For a number of years the Division of Supervision has carried three tables in this bulletin showing the development of high school education in Kentucky. This information has proved helpful to students of Kentucky education and it is thought desirable to continue to carry them in this publication.

**Table IV**  
**NUMBER OF HIGH SCHOOLS BY YEARS**

School Year	Public White High Schools	Public Colored High Schools	Private High Schools	Totals
1915-16.....	316	No report	No report	316
1916-17.....	376	32	No report	408
1918-19.....	400	30	No report	430
1922-23.....	529	56	No report	585
1923-24.....	492	51	86	629
1924-25.....	496	50	84	630
1925-26.....	551	57	91	699
1926-27.....	552	55	88	695
1927-28.....	607	64	98	769
1928-29.....	614	73	97	784
1930-31.....	661	72	73	806
1931-32.....	676	70	86	832
1932-33.....	678	73	82	834
1933-34.....	682	74	84	838
1934-35.....	684	75	89	848
1935-36.....	680	75	83	833
1936-37.....	663	78	77	818
1937-38.....	652	80	76	808
1938-39.....	628	80	75	783
1939-40.....	605	78	75	758
1940-41.....	592	74	72	738
1941-42.....	574	71	71	716
1942-43.....	555	71	71	697
1943-44.....	541	70	70	681
1944-45.....	542	66	73	681
1945-46.....	546	65	73	674
1946-47.....	513	62	73	648
1947-48.....	507	61	75	643

Table IV shows there was a continuous growth in the number of high schools from 1915 to 1935. There were 848 high schools in the state in 1935. Now that we have 643 high schools, public and private, it is clear that there has been a decrease in numbers of 205 since 1935. The decrease in the number of public high schools has come about very largely through small high schools being merged into larger school centers.

Table V presents an interesting picture of the increase in the total high school enrollments in different types of high schools (public white, public colored, and private) since 1915. From 1915 to

1941 the total high school enrollment increased 128,900 or over 800%. After 1941 the enrollment began to decrease and continued to decrease until 1944. During these wartime years the enrollment decreased about 23,000 pupils. Since 1944 the enrollment has increased, there now being 8,689 more pupils enrolled in high school than in 1944. It is significant, however, that the total enrollment this year is 1,554 less than was the total high school enrollment last year. Both the public white high schools and the private secondary schools show fewer high school pupils enrolled this year than were enrolled last year. Only in the public colored high schools do we note an increase in total enrollment.

**Table V**  
**ENROLLMENT BY YEARS IN DIFFERENT TYPES OF HIGH SCHOOLS**

School Year	Public White High Schools	Public Colored High Schools	Private High Schools	Totals
1914-15.....	15,547	No report	No report	15,547
1915-16.....	18,850	1,054	No report	19,904
1916-17.....	20,800	1,225	No report	22,025
1917-18.....	22,929	1,209	No report	24,138
1918-19.....	21,255	1,218	No report	22,473
1920-21.....	25,939	1,446	No report	27,385
1922-23.....	35,806	2,373	5,007	43,186
1923-24.....	38,575	2,586	6,548	47,709
1924-25.....	37,264	2,952	5,857	46,073
1925-26.....	42,416	1,929	7,168	51,513
1926-27.....	46,096	2,664	7,440	56,210
1927-28.....	50,368	3,516	8,835	62,719
1928-29.....	54,903	4,083	8,590	67,576
1929-30.....	58,370	4,100	-----	62,470
1930-31.....	61,589	4,054	-----	65,643
1931-32.....	67,268	4,677	-----	71,945
*1932-33.....	*83,092	*6,994	*7,407	*97,493
1933-34.....	83,930	6,961	7,445	98,336
1934-35.....	88,583	7,983	7,846	104,412
1935-36.....	101,017	6,546	8,173	115,735
1936-37.....	106,799	8,711	8,994	124,504
1937-38.....	109,587	8,938	9,610	128,135
1938-39.....	117,284	9,587	9,166	136,037
1939-40.....	121,204	10,342	9,999	141,545
1940-41.....	123,822	10,440	10,185	144,447
1941-42.....	119,398	10,173	10,339	139,910
1942-43.....	113,662	9,947	10,048	133,657
1943-44.....	102,546	9,422	9,900	121,868
1944-45.....	102,619	9,448	10,376	122,443
1945-46.....	103,455	9,897	10,820	124,172
1946-47.....	109,511	10,439	12,161	132,111
1947-48.....	107,876	10,666	12,015	130,557

\* Beginning with the school-year 1932-33, the enrollment of the seventh and eighth grades of six-year high schools and of junior high schools are included.

**Table VI**  
**HIGH SCHOOLS ACCREDITED THROUGH GRADE TWELVE,**  
**1909-1948**

School Year	Public White High Schools	Public Colored High Schools	Private High Schools	Totals
1909-10.....	54	No report	29	83
1910-11.....	69	No report	32	101
1911-12.....	85	No report	33	118
1912-13.....	100	No report	34	134
1913-14.....	123	No report	38	162
1914-15.....	134	No report	41	175
1915-16.....	149	No report	45	194
1916-17.....	171	No report	50	221
1917-18.....	185	No report	52	237
1918-19.....	201	No report	52	253
1919-20.....	220	No report	55	275
1920-21.....	225	No report	57	282
1921-22.....	228	No report	55	283
1922-23.....	263	7	61	331
1923-24.....	286	8	69	363
1924-25.....	311	11	68	390
1925-26.....	342	14	73	429
1926-27.....	382	14	80	476
1927-28.....	415	13	83	511
1928-29.....	457	16	87	560
1929-30.....	491	18	89	598
1930-31.....	522	26	91	639
1931-32.....	527	34	84	645
1932-33.....	539	35	83	648
1933-34.....	535	34	82	651
1934-35.....	529	34	84	647
1935-36.....	559	51	77	687
1936-37.....	558	54	78	690
1937-38.....	546	56	75	677
1938-39.....	543	60	73	676
1939-40.....	529	59	73	661
1940-41.....	516	61	72	649
1941-42.....	510	56	70	636
1942-43.....	500	54	70	626
1943-44.....	494	55	69	618
1944-45.....	490	56	70	616
1945-46.....	487	55	71	613
1946-47.....	463	55	72	590
1947-48.....	464	55	71	590

Table VI shows the situation as regards the number of accredited high schools by years since 1910. When one thinks of a high school in its true sense one thinks of an institution that provides its students a program of work through the twelfth grade. High schools that are organized to give work that does not extend through the twelfth grade should be looked upon as incomplete, feeder schools for regularly organized high schools; i.e., schools that offer pupils a program through the twelfth grade.

The high schools in Kentucky are accredited by the State Board of Education. This applies to both public and private schools. In arriving at the official ratings given the high schools the State Board of Education usually follows the recommendations of the Commission on Secondary Schools of the Kentucky Association of Colleges and Secondary Schools. The members of this Commission meet with the Public School Supervisors and canvass the annual high school reports that are made to the State Department of Education and also the reports of the Supervisors' inspections.

*Need for Larger and More Comprehensive Types of High Schools.* One of the principal goals of high school education should be that of providing a program of work that will function in the lives of young people. The needs of youth of high school age are of such a wide variety that they cannot be met adequately in small high schools. One high school in the case of many of our small counties should serve the entire county. Where counties have a school population sufficient to require more than one high school, such schools should serve large areas within the county.

It is generally recognized that an adequate offering for a comprehensive high school designed to meet pupil needs should offer a broad program of general education for citizenship and other common needs and specialized offerings to meet individual needs in academic subjects, fine arts, practical arts, and vocational fields. In addition to these offerings the high school must offer its pupils adequate library facilities, an adequate health and physical education program, and an adequate and full program of guidance.

It is clear from recent studies of high school costs that this broad program of offerings and activities cannot be adequately provided in high schools of fewer than 500 pupils. It is recognized that in some smaller counties and in other counties, on account of road conditions, topography, and distribution of population as well as present location of buildings, exceptions to this enrollment goal will be necessary, and under these conditions smaller high schools must be operated.

If Kentucky is to have large high schools offering a comprehensive program of work that meets the needs of youth, then many small high schools must be merged into larger centers. The State Department of Education does not attempt to dictate such mergers or consolidations to local school districts. It does, however, encourage and recommend consolidations for the purpose of securing sound and comprehensive programs of education.

Transportation is an important factor in school consolidation. The State Department of Education recognizes that there are limits



in time that pupils should spend on school buses. In general, in the case of high school pupils, the maximum range of time spent in school buses of 60 to 90 minutes one way, and for elementary pupils a maximum range of 30 to 50 minutes one way, seems reasonable.

The fundamental reason for merging small schools into larger units is to carry out a sound educational policy and to provide for the highest educational efficiency. It is fallacious to merge small schools into larger units and at the same time fail to provide a richer and more comprehensive program of education for the pupils in the larger school. There is little or no educational advantage in bringing large numbers of pupils together into one school if the pupils are to continue to be offered virtually the same offerings and opportunities that they had in the small schools.

The merger of small schools into larger units for the purpose of providing a comprehensive program of education should be based upon careful study of the entire school district. After a comprehensive educational program has been agreed upon then ample time should be taken to familiarize the people with the needs and advantages of the proposed plan, since any program designed to improve educational conditions, to be successful, must have the support of the people in the area to be served.

KENTUCKY HIGH SCHOOLS, 1947-48

County District School	*Rating	High School Enrollment by Grades							Tchs.	Term in Mos.	Voca- tions Taught	Library Appro- priation	Elementary School District					
		7	8	9	10	11	12	Total					Pupils	Tchs.	Term			
<b>ADAIR COUNTY</b>																		
County				33	57	17	20	127	6	9		\$ 127	3,013	111	8			
Breeding	B			18	31	8	8	65	3			65						
Knifley	B			15	26	9	12	62	3			62						
Columbia		36	49	71	98	47	81	382	18	9		500	343	8	9			
White	A	36	49	61	93	38	76	353	15		3	500						
Colored	BE			10	5	9	5	29	3		1							
<b>ALLEN COUNTY</b>																		
Co. H. S. (Scottsville)	A	41	92	50	118	32	74	407	15	9	3	560	1,860	58	9			
Scottsville	A	33	28	27	28	24	21	161	7 1/2	9	2	300	379	10 1/2	9			
<b>ANDERSON COUNTY</b>																		
County				51	55	32	45	183	6	9		267	995	35	8			
Co. H. S. (Lawrenceburg)	A			36	36	26	19	117	6		2	117						
Western (Sinai)	B			15	19	6	26	66	3			150						
Lawrenceburg	A			32	23	27	24	106	6	9		150	349	11	9			
<b>BALLARD COUNTY</b>																		
County				130	93	85	82	390	20	9		583	1,275	49	8			
Bandana	B			29	24	17	24	94	4		1	150						
Barlow	B			30	28	22	15	95	4		1	190						
Blandville	BE			19	12	14	13	58	3		1	58						
LaCenter W.	B			20	18	21	14	73	4		2	75						
LaCenter C.	10T			4	1			5	1			10						
Wickliffe	BE			28	10	11	16	65	4		1	100						

\* Interpretation of High School Ratings:

- A—Accredited through the entire high school course (through grade twelve).
- B—Accredited through the entire high school course (through grade eleven).
- 11 Gr.—Accredited through grade eleven.
- 10 Gr.—Accredited through grade ten.
- 9 Gr.—Junior high school—recognized through grade nine.
- T—This initial when attached to the designation of any rating indicates that such rating is given in the face of some deficiency, and that the accredited rating of the school should be terminated at the close of this school year.
- E—This initial suggests that an emergency is recognized to exist that may justify the operation of the school even with an observed shortage in the number of pupils or of teachers.
- U—Unaccredited.

**BARREN COUNTY**

County		113	152	96	165	72	90	688	28	9		675	3,042	88	9			
Austin-Tracy (Austin)	B			19	36	15	19	89	5		1	100						
Hiseville	A	51	49	17	48	20	25	210	7		1	150						
Park City	A	23	43	29	40	14	19	168	8		3	200						
Temple Hill (Glasgow)	A	39	60	31	41	23	27	221	8		2	225						
Cave City	B	28	25	25	15	11	13	117	5 1/2	9	1	100	249	7	9			
Glasgow		94	23	84	93	70	47	411	22	9	1	723	989	22	9			
White	A	94	23	61	73	59	39	349	19		3	723						
Colored	B			23	20	11	8	62	3			723						

**BATH COUNTY**

County				88	83	74	46	291	15 1/2	9		560	1,564	48	9			
Bethel	B			18	12	19	11	60	4			60						
Owingsville	A			50	48	39	27	164	7 1/2		2	400						
Salt Lick	B			20	23	16	8	67	4			100						
Sharpsburg	B	24	12	21	14	15	10	96	4			35	185	6	9			

**BELL COUNTY**

County		68	62	260	180	159	113	842	32 1/2	9		540	6,237	176	9			
Co. H. S. (Pineville)	A			169	122	102	83	476	16		3	450						
Henderson Settl. (Frakes)	BE	19	20	22	13	7	3	54	4		1	50						
Pruden (Pruden, Tenn.)	B	26	21	46	29	35	17	174	6 1/2		1							
Red Bird (Beverly)	B	23	21	23	16	15	10	108	6		1							
Lone Jack (Four Mile)	A	26	25	25	31	17	14	138	7	9	1	40						
Middlesboro	B	13	17	204	177	140	78	629	24	9	1	150	248	8	9			
White	A			184	155	125	66	530	20		2	705	2,269	53	9			
Colored	B			20	22	15	12	99	4		1	800						
Pineville	A	13	17	49	42	46	35	278	12	9	2	325	511	14	9			

**BOONE COUNTY**

County			26	103	79	82	69	359	15 1/2	9		660	1,373	41	9			
Burlington	B		26	23	21	12	22	104	4 1/2		2	200						
Florence	B			19	27	26	19	91	4			300						
Hebron	B			39	14	26	17	96	4		1	150						
New Haven (Union)	B			22	17	18	11	68	3			10						
Walton	B	27	26	27	20	14	11	125	4 1/2	9		175	248	9	9			

**BOURBON COUNTY**

County		90	64	117	86	85	58	500	28	9		200	1,671	48	9			
Center Hill (Paris)	B	44	24	16	22	18	7	131	7 1/2		1	100						
Clintonville	B	22	25	23	21	20	15	126	6 1/2		2	50						
Millersburg	B	24	15	40	20	21	16	136	7 1/2		2							
N. Middletown	A			38	23	26	20	107	6 1/2		2							
Paris		125	112	99	104	61	74	575	27	10		50						
White	A	89	80	55	66	43	52	385	19		2	600						
Colored	A	36	32	44	38	18	22	190	8		2	400	669	24	10			
Millersburg Military Inst. (Pr.)	A		22	30	38	33	24	147	10		2	200						

976

977

KENTUCKY HIGH SCHOOLS, 1947-48—Continued

County District School	*Rating	High School Enrollment by Grades							Tchs.	Term in Mos.	Voca- tions Taught	Library Appro- priation	Elementary School District			
		7	8	9	10	11	12	Total					Pupils	Tchs.	Term	
<b>BOYD COUNTY</b>																
Co. H. S. (Ashland)	A			116	86	68	44	314	11	9	3		1,709	48	9	
Ashland	A	462	450	397	437	344	279	2,369	86	9	2	1,512	3,350	115	9	
White								1,023	37			1,000				
Colored	BE	18	11	14	14	9	14	80	5			232				
Coles Jr.	A	210	183	145				538	20		2	280				
Putnam Jr.	A	234	256	238				728	24							
Catlettsburg	A			88	63	48	41	240	10	9	1	350	840	26	9	
Fairview (Ashland)	9	68	107	58				233	7	9		603	603	17	9	
Holy Family (Ashland) (Pr.)	A			15	12	15	21	63	5	9	1	141				
<b>BOYLE COUNTY</b>																
County		48	106	92	97	45	70	458	22	9		612	1,374	39	9	
Forkland (Gravi Switch)	BE	18	15	7	10	6	13	69	4			100				
Junction City	A		35	35	30	15	25	140	6		1	175				
Parksville	B	30	20	18	20	10	14	112	5 1/2		2	275				
Perryville	A		36	32	37	14	18	137	6 1/2		1	62	700	867	30	9
Danville		121	111	108	108	85	67	600	28	9		500				
White	A	93	86	77	88	68	57	469	21		3	200				
Colored	AE	28	25	31	20	17	10	131	7		1					
<b>BRACKEN COUNTY</b>																
County		107	100	67	74	45	51	444	21 1/2	9		355	717	26	9	
Brooksville	A	24	34	25	74	45	51	253	12 1/2		3	300				
Germantown	9	35	25	15				75	3			30				
Milford	9	18	13	13				44	3							
Western (Bradford)	9	30	28	14				72	3			25				
Augusta	B	19	20	24	23	18	10	114	6	9	1	100	181	7	9	
St. James (Brooksville) (Pr.)	B			7	7	12	6	32	3	9	1	86				
<b>BREATHITT COUNTY</b>																
Co. H. S. (Jackson)	A			136	79	93	65	373	12 1/2	9	2	500	4,490	131	9	
Jackson	B	34	27	19	26	18	20	144	6	9	1	140	343	8	9	
Highland Inst. (Guerrant) (Pr.)	B			10	15	4	5	34	4	9	1	50				
Magoffin Inst. (Sky) (Pr.)	B	3	7	9	3	4	3	29	4	9	1	175				
Mt. Carmel (Lawson) (Pr.)	A		13	35	20	26	17	111	8	9	1	247				
Oakdale (Pr.)	B	14	10	17	15	7	7	70	5	9	1	88				
Riverside Inst. (Lost Cr.) (Pr.)	B			16	14	7	6	43	4	9	1	61				
<b>BRECKINRIDGE COUNTY</b>																
County		72	69	144	118	62	96	561	23	9		550	2,170	78	8	
<b>CLAY COUNTY</b>																
Hardinsburg W.	A		45	45	85	72	40	54	341	12		3	400			
Hardinsburg C.	10T		4	3	20	12			39	2						
Irvington	A		23	21	39	34	22	42	181	9						
Cloverport	B				30	30	20	12	92	4	9	1	150	237	8	9
<b>BULLITT COUNTY</b>																
County					81	81	43	29	244	13	8 1/2		300	1,507	49	8 1/2
Mt. Washington	B				21	24	17	15	77	5		1	150			
Shepherdsville	A				60	57	26	24	167	8		3	150			
Lebanon Junction	B	23	33	20	17	14	20	127	6	9	1	75	236	6	9	
<b>BUTLER COUNTY</b>																
County		39	32	88	101	63	56	379	12	8		217	2,310	86	8	
Morgantown	A	39	32	72	74	49	43	308	9		2	200				
Rochester	B			16	27	14	13	70	3			17				
<b>CALDWELL COUNTY</b>																
County—Fredonia	A	26	27	43	44	25	39	204	8	9	3	100	946	39	8	
Princeton	A	114	120	129	124	83	81	651	22	9		600	722	19	9	
White	A	92	100	109	103	71	73	548	18		3	500				
Colored	B	22	20	20	21	12	8	103	4		1	100				
<b>CALLOWAY COUNTY</b>																
County		105	91	128	114	77	87	602	23	9		509	1,679	43	8	
Almo	B	20	24	29	34	11	23	141	5		2	129				
Hazel	A			35	29	22	16	102	5							
Kirksey	B	23	23	19	18	15	18	116	5		2					
Lynn Grove	B	31	19	20	18	16	13	122	5		2					
New Concord	B	31	25	25	15	13	12	121	4		1	275				
Murray	A	47	53	62	57	49	51	329	18	9		625	529	14	9	
White	A	47	53	52	49	49	43	293	15		2	525				
Colored	BE			10	8	10	8	36	3		1	120				
Murray Training School (St.)	A	16	21	33	39	28	35	172	10	9	2	220				
<b>CAMPBELL COUNTY</b>																
County—Alexandria	A			107	105	89	83	384	15	9	3	455	959	39	9	
Bellevue	A	48	54	63	58	49	71	343	23 1/2	10	1	464	500	18	10	
Dayton	A		103	61	76	64	56	360	17	10	2	500	916	27	10	
Ft. Thomas	A	87	72	75	69	81	97	481	25	10	1	1,000	631	22	10	
Newport	A			246	156	138	106	648	35	10	2	627	2,398	106	10	
Silver Grove	B			16	18	12	19	65	4	9	1	100	144	4	9	
Newport Catholic (Pr.)	A			92	108	89	60	349	13	9	1	400				
Notre Dame of Providence (Newport) (Pr.)	A			58	65	52	65	240	8 1/2	9	2	230				
Our Lady of the Highlands (Ft. Thomas) (Pr.)	11			9	8	4		21	2	9	2					
St. Thomas (Ft. Thomas) (Pr.)	11			21	10	15		46	3	9		500				
<b>CARLISLE COUNTY</b>																
County				94	93	64	53	304	18	9		345	858	28	9	
Arlington	B			31	28	23	17	99	5		2	180				

9/46

6/46

KENTUCKY HIGH SCHOOLS, 1947-48—Continued

County District School	*Rating	High School Enrollment by Grades							Tchs.	Term in Mos.	Voca- tions Taught	Library Appro- priation	Elementary School District			
		7	8	9	10	11	12	Total					Pupils	Tchs.	Term	
<b>CARLISLE COUNTY—Cont.</b>																
Bardwell	B			29	28	18	14	89	6		3	50				
Cunningham	B			22	24	11	10	67	4		1	75				
Milburn	BE			12	13	12	12	49	3		1	40				
<b>CARROLL COUNTY</b>																
County				106	58	51	33	248	12	9	3	275	780	27	8	
Carrollton	A											427	13	9		
<b>CARTER COUNTY</b>																
County		249	265	234	242	127	147	1,264	39	9		1,450	4,572	132	9	
Carter	B	26	12	11	24	13	15	101	4			75				
Grahn	9	31	32	21				84	3			100				
Grayson	A	47	57	68	63	31	58	324	10			500				
Hitchins	A	45	50	35	36	22	22	210	7			220				
Olive Hill	A	40	52	66	119	61	52	390	13			500				
Soldier	9E	22	22	1				51	2			55				
Upper Tygart	9	38	40	26				104	3			75				
Erie (Olive Hill) (Pr.)	A			23	26	9	12	70	7	9	2	150				
<b>CASEY COUNTY</b>																
County—Middleburg	B			44	33	21	22	120	4	9		200	3,021	128	8	
Liberty	A			79	38	49	46	212	6 1/2	9	3	75	294	9	9	
<b>CHRISTIAN COUNTY</b>																
County				106	112	65	70	353	18	9		554	3,062	113	8-9	
Crofton	B			28	26	16	11	81	4		1	150				
Lacy (Hopkinsville)	B			18	27	9	17	71	3 1/2		1	54				
Sinking Fork (Hopkinsville)	B			19	26	12	16	73	4 1/2		2	175				
So. Christian (Herndon)	A			41	33	28	26	128	6		2	175				
Hopkinsville			84	265	195	139	130	813	37	9		850	1,360	53	9	
White	A		84	129	91	90	80	474	23		2	500				
Colored	A			136	104	49	50	339	14		1	350				
Pembroke	B	25	31	20	24	18	23	141	5	9		350	307	8	9	
<b>CLARK COUNTY</b>																
Co. H. S. (Winchester)	A			106	90	66	59	321	13	9	3	325	1,591	51	9	
Winchester	A	25	18	102	53	56	55	309	21	10		586	861	26	10	
White	A			72	41	48	45	206	13		3	481				
Colored	AE	25	18	30	12	8	10	103	8		2	105				
St. Agatha (Winchester) (Pr.)	B			4	10	8	8	30	4	9		77				
<b>CLAY COUNTY</b>																
County—Manchester	A			85	77	50	40	252	9	9		400	5,575	167	8	
Oneida Inst. (Pr.)	A			45	39	27	25	136	7	9	1	100				
<b>CLINTON COUNTY</b>																
County				54	112	58	40	264	8	9	2	600	1,906	57	8	
Albany	A											330	8	9		
<b>CRITTENDEN COUNTY</b>																
County				57	67	49	31	204	10	8		100	1,363	59	8	
Frances (Fredonia)	B			19	24	16	8	67	3			50				
Mattoon (Repton)	B			25	19	22	11	77	4			40				
Tolu	B			13	24	11	12	60	3			40				
Marion	A	55	44	66	59	47	38	309	11 1/2	9	3	228	446	10	9	
<b>CUMBERLAND COUNTY</b>																
County—Marrowbone	B			17	21	37	15	8	17	5	9	2	130	1,662	64	8
Burkesville	A	19	20	38	53	33	27	190	7	9		213	6	9		
<b>DAVIES COUNTY</b>																
County		48	50	203	179	168	131	779	36	9		850	2,416	73	9	
Co. H. S. (Owensboro)	A			131	120	104	73	428	17		3	500				
Utica	B	21	31	127	20	25	12	136	7		2	150				
West Louisville	B	27	19	29	14	17	22	128	7		2	150				
Whitesville	B			16	25	22	24	87	5		1	50				
Owensboro				146	162	121	176	605	27	9		848	3,207	116	10	
White	A	43	48	315	292	214	227	1,139	58 1/2		2	598				
Colored	A			38	42	42	23	236	11 1/2		3	250				
Technical	A	43	48	131	88	51	28	298	20		8	200				
Mt. St. Joseph (Maple Mt.) (Pr.)	A			44	34	46	38	162	9	9		547				
St. Frances Ac. (Owensb.) (Pr.)	A			93	75	73	56	297	10	9		338				
St. Joseph (Owensboro) (Pr.)	A			63	33	46	47	189	6	9		200				
<b>EDMONSON COUNTY</b>																
County		78	92	80	88	43	66	447	17	9		200	1,799	55	8	
Brownsville	A	35	57	33	44	14	24	207	8		3	50	50			
Kyrook	B	21	18	28	16	12	8	103	4			50				
Sunfish	B	22	17	19	28	17	34	137	5			100				
<b>ELLIOTT COUNTY</b>																
County—Sandy Hook	A	18	46	73	37	44	35	253	9	9	2	200	2,474	61	8	
<b>ESTILL COUNTY</b>																
Co. H. S. (Irvine)	A			67	71	44	55	237	11	9	3	550	2,383	85	8	
Irvine	A			75	63	56	49	243	9 1/2	9	2	400	613	18	9	
Ravenna												184	8	9		
<b>FAYETTE COUNTY</b>																
County		354	341	326	328	259	164	1,772	89 1/2	9		2,011	3,168	101	9	
Athens (Lexington)	B	42	32	22	22	20	18	156	10		3	250				
Bryan Sta. (Lexington)	9	144	137	132				413	18 1/2		1	400				

086

186

KENTUCKY HIGH SCHOOLS, 1947-48—Continued

County District School	*Rating	High School Enrollment by Grades							Tchs.	Term in Mos.	Voca-tions Taught	Library Appro- priation	Elementary School District		
		7	8	9	10	11	12	Total					Pupils	Tchs.	Term
<b>FAYETTE COUNTY—Cont.</b>															
Douglass C. (Lexington)	11	54	53	50	31	26		214	12		147				
Lafayette (Lexington)	A	114	119	122	275	213	146	989	49	8	1,214				
Lexington	A	559	541	421	343	328	307	2,499	113	10	2,485	4,340	137	10	
Dunbar, C.	A	175	174	167	111	89	93	809	29	4	750				
Henry Clay	A				232	239	214	685	36		735				
Lexington Jr.	9	257	228	134				619	29		500				
Morton Jr.	9	127	139	120				386	19		500				
University H. S. (Lex.) (St.)	A	32	35	37		33	29	194	14	1					
Lexington Latin (Pr.)	A		19	23	18			105	8	9	125				
Sayre Ac. (Lexington) (Pr.)	9	3	2	7				12	2	9					
St. Catherine Ac. (Lexington) (Pr.)	A			21	19	20	26	86	6	9	171				
<b>FLEMING COUNTY—Flemingsburg</b>															
County	A			104	87	71	52	314	13	9	425	2,081	62	9	
<b>FLOYD COUNTY</b>															
County	B	169	140	459	349	273	189	1,579	71	9	1,848	10,730	283	9	
Auxler	A			14	23	14	10	61	3 1/2	1	100				
Betsy Layne	A			51	49	45	20	165	9		175				
Garrett	A			66	47	28	20	161	6 1/2	3	190				
Martin	A			54	39	34	41	168	8		200				
Maytown (Langley)	A			31	29	18	22	100	8		175				
McDowell	A			51	31	31	17	130	8		200				
Wayland	A	74	69	82	63	61	32	381	13		375				
Wheelwright, W.	A	95	71	96	57	35	21	375	12	2	400				
Wheelwright, C.	BE			14	11	7	6	38	3	1	33				
Prestonsburg	A			124	81	70	72	347	15	9	500	607	19	9	
<b>FRANKLIN COUNTY</b>															
County	A	154	161	152	127	103	92	789	42	9	1,321	1,549	53	9	
Bald Knob (Frankfort)	A	36	54	41	29	22	20	202	12		275				
Bridgeport (Frankfort)	A	44	37	34	28	22	18	183	8		400				
Elkhorn (Frankfort)	A	52	49	59	44	38	36	278	14 1/2	3	326				
Peaks Mill (Frankfort)	B	22	21	18	26	21	18	126	7 1/2	3	320				
Frankfort	A	17	13	117	116	100	88	451	26	10	450	1,103	38	10	
White	A			81	91	82	75	329	18	2	350				
Colored	AE		13	36	25	18	13	122	8		100				
Good Shepherd (Frankfort) (Pr.)	A			8	12	15	11	46	5	9	75				
<b>FULTON COUNTY</b>															
County	B	64	60	52	39	36	31	282	14	9	200	803	28	8	
Cayce	B	21	31	34	21	23	20	150	7		50				
Western (Hickman)	B	43	29	18	18	13	11	132	7	2	150				
Fulton	A			52	58	38	36	184	10	9	200	510	20	9	
Hickman	A			60	53	52	25	190	9	9	150	633	18	9	
White	A			32	37	35	18	122	6	2	150				
Colored	B			28	16	17	7	68	3	1	150				
<b>GALLATIN COUNTY—Warsaw</b>															
County	A			36	32	22	25	115	6	9	200	616	18	8	
<b>GARRARD COUNTY</b>															
County	B	85	75	79	56	59	43	397	20	9	413	1,159	33	9	
Buckeye (Lancaster)	B	17	23	19	18	10	13	100	5		200				
Camp Dick Robinson (Lancaster)	B	32	25	23	20	20	11	181	7		13				
Paint Lick	A	36	27	37	18	29	19	166	8	1	200				
Lancaster	A	39	35	52	39	36	42	243	13	9	350	367	12	9	
White	A	39	35	38	29	24	29	194	10	2	300				
Colored	BE			14	10	12	13	49	3	1	50				
<b>GRANT COUNTY</b>															
County	B	109	103	98	73	66	75	524	23	9	609	1,139	34	9	
Corinth	B	20	19	20	19	12	14	104	4 1/2	1	200				
Crittenden	B	18	19	28	17	18	14	114	4 1/2	2	100				
Dry Ridge	A	32	36	25	29	22	27	171	7 1/2	3	159				
Mason	B	39	29	25	8	14	20	135	6 1/2	2	150				
Williamstown	B	22	28	17	17	14	15	113	8	2	175	193	6 1/2	9	
<b>GRAVES COUNTY</b>															
County	A	258	213	276	240	163	143	1,293	48 1/2	9	1,349	3,391	99	9	
Cuba (Mayfield)	10E	49	41	30	30	29	25	204	7	3	175				
Dublin	B	15	17	13	14	14		59	2 1/2						
Fancy Farm	B			35	22	20	21	98	5		106				
Farmington	B	27	27	24	30	9	18	135	5		160				
Loves	B	21	25	37	31	17	21	152	5		75				
Melber	BE	24	23	21	14	12	10	104	4		151				
Sedalia	A	55	31	33	45	33	24	221	8		350				
Symsonia (Elva)	B	30	18	29	21	17	12	127	5	3					
Wingo	A	37	31	54	33	26	12	193	7						
Mayfield	A	132	109	92	139	117	72	661	31	9	332				
White	A	115	98	75	118	103	62	571	26	2	425	871	51	9	
Colored	B	17	11	17	21	14	10	90	5	2	425				
<b>GRAYSON COUNTY</b>															
County	A	29	41	86	98	41	58	353	13	9	200	2,631	99	8	
Caneyville	B	14	19	48	60	30	34	205	7	2	100				
Clarkson	B	15	22	38	38	11	24	148	6	1	100				
Leitchfield	A	40	47	30	25	30	19	191	9	2	300	321	7	9	

982

983

KENTUCKY HIGH SCHOOLS, 1947-48—Continued

County District School	*Rating	High School Enrollment by Grades							Tchs.	Term in Mos.	Voca- tions Taught	Library Appro- priation	Elementary School District					
		7	8	9	10	11	12	Total					Pupils	Tchs.	Term			
<b>GREEN COUNTY</b>																		
County													1,670	74	8			
Greensburg	A			62	101	55	47	265	11½	9	2	400	249	9	9			
<b>GREENUP COUNTY</b>																		
County		81	80	118	157	63	110	609	20½	8		375	2,616	92	8			
McKell (So. Shore)	A	53	45	54	71	25	60	308	9½			75						
Wurtland	A	28	35	64	36	38	50	301	11			300						
Greenup	B	31	32	22	23	13	11	132	6	9	1	100	217	7	9			
Raceland	A			45	43	27	33	148	11	9	2	400	458	17	9			
Russell	A	84	82	63	105	66	73	473	21	9		350	695	24	9			
Senior	A				105	66	73	244	12		3	350						
Junior	9	84	82	63				229	9									
So. Portsmouth	B	23	21	21	14	12	15	106	4	9		125	139	3	9			
<b>HANCOCK COUNTY</b>																		
County		50	51	70	62	46	52	331	11	9		250	1,043	27	9			
Hawesville	A	50	51	47	46	28	33	255	7½		2	200						
Lewisport	B			23	16	18	19	76	3½		1	50						
<b>HARDIN COUNTY</b>																		
County		251	268	243	212	150	137	1,261	48	9		776	2,651	79	9			
Glendale	A	62	61	56	36	26	26	267	9		2	300						
Howevally (Cecilia)	B	32	37	25	30	12	16	152	6			115						
Lynnvale (White Mills)	AT	42	46	36	23	19	14	180	8			200						
Rineyville	A	38	37	51	38	27	22	213	7		1							
Sonora	A	26	31	26	27	25	23	158	7		2	161						
Vine Grove	A	51	56	49	58	41	36	291	11		3							
Elizabethtown				60	76	50	51	237	12	9		514	693	20	9			
White	A			45	49	43	45	182	9		2	400						
Colored	BE	18	9	15	27	7	6	55	3		1	134						
West Point	B			17	15	18	13	90	4	9	2	170	139	4	9			
Bethlehem Ac. (St. John) (Pr.)	A			13	7	12	15	47	5	9		90						
Ft. Knox (Pr.)	A		31	22	33	26	24	136	7½	9		500						
St. James (Elizabethtown) (Pr.)	10			14	7			21	1	9		119						
<b>HARLAN COUNTY</b>																		
County		66	106	734	528	426	324	2,184	86	9		2,240	12,374	307	9			
Benham, W.	A	42	51	37	37	27	26	220	12		2	500						
Benham, C.	B	24	23	21	26	15	11	120	6		1	100						
<b>HARRISON COUNTY</b>																		
County		123	112	109	85	68	62	559	25	9		556	1,069	34	9			
Berry	B	20	23	22	15	11	17	108	5		1	108						
Buena Vista (Cynthiana)	BE	25	20	13	17	16	6	102	4			102						
Connersville (Cynthiana)	B	33	26	27	18	12	15	131	6		2	130						
Oddville (Cynthiana)	B	22	22	23	22	24	14	127	6			126						
Renaker (Cynthiana)	BE	23	21	19	13	5	10	91	4			90						
Cynthiana		65	44	44	50	31	30	264	14	9		300	404	16	9			
White	A	52	38	35	42	27	23	217	10		2	250						
Colored	BE	13	6	9	8	4	7	47	4		1	50						
Pine Mountain (Pr.)	A			32	27	28	15	102	8	9	3							
<b>HART COUNTY</b>																		
County		26	28	54	53	31	52	244	11	9		255	1,824	62	8			
Cub Run	B			31	31	16	23	101	4		1	130						
Memorial (Hardyville)	B	26	28	23	22	15	29	143	7		3	125						
Horse Cave		42	37	50	42	37	40	248	11	9		250	294	8	9			
White	A	25	24	32	29	25	35	170	7		2	175						
Colored	BE	17	13	18	13	12	5	78	4		1	75						
Munfordville	A	24	29	31	39	17	37	177	8	9	2	167	194	6	9			
<b>HENDERSON COUNTY</b>																		
County		171	150	154	105	64	55	699	31	9		722	1,897	62	9			
Corydon	A	30	30	44	35	36	29	204	8		3							
Hebbardsville	B	38	24	30	13	17	14	136	6		2	150						
Niagara (Henderson)	10	15	23	18	17			73	4		1	150						
Robards	B	11	7	13	13			44	3			100						
Spottsville	B	46	27	20				143	6		2	250						
Weaverton (Henderson)	9	31	39	29	27	11	12	143	6			72						
Henderson		35	200	199	187	165	142	928	41	9		950	1,644	59	9			
White	A		165	148	157	142	120	732	30		3	750						
Colored	A	35	35	51	30	23	22	196	11		2	200						
Holy Name (Henderson) (Pr.)	A			26	23	21	22	92	5	9	1	93						
<b>HENRY COUNTY</b>																		
County		99	83	126	113	77	62	560	22½	9		718	1,418	51	9			
Campbellsburg	B	17	22	32	28	19	15	133	5		2	265						
New Castle	B	38	31	41	29	17	16	172	6½		2	120						

984

985

KENTUCKY HIGH SCHOOLS, 1947-48—Continued

County District School	*Rating	High School Enrollment by Grades							Tchs.	Term in Mos.	Voca-tions Taught	Library Appro- priation	Elementary School District		
		7	8	9	10	11	12	Total					Pupils	Tchs.	Term
<b>HENRY COUNTY—Cont.</b>															
Pleasureville	A	18	12	41	35	27	17	150	7	—	2	200	—	—	
Sulphur	B	26	18	12	21	14	14	105	4	—	—	133	—	—	
Eminence	B	22	22	25	12	11	13	105	5 1/2	9	1	100	280	8 9	
<b>HICKMAN COUNTY</b>															
County		65	58	90	63	55	51	382	15	9	—	460	1,069	32 9	
Clinton	A	49	38	49	32	36	36	240	10	—	1	295	—	—	
Fulgham (Clinton)	B	16	20	41	31	19	15	142	5	—	2	165	—	—	
<b>HOPKINS COUNTY</b>															
County		224	170	204	183	129	129	1,039	41	9	—	834	2,909	87 9	
Anton (Madisonville)	BE	26	16	12	11	12	16	93	4	—	—	154	—	—	
Charleston (Dawson Springs)	B	37	30	29	30	16	18	160	6	—	2	120	—	—	
Dalton	BE	—	15	15	13	12	55	3	—	—	1	25	—	—	
Hanson	A	39	37	33	36	22	20	187	7 1/2	—	2	—	—	—	
Mortons Gap	B	36	30	18	23	12	11	130	5	—	—	225	—	—	
Nebo	B	37	28	20	25	17	13	140	7	—	2	260	—	—	
Nortonville	A	49	29	77	43	37	39	274	9	—	1	250	—	—	
Dawson Springs	A	55	50	52	33	30	28	248	8	9	3	300	307	8 9	
Earlington	A	63	32	42	45	29	24	235	12	9	—	303	450	10 9	
White	B	38	19	27	19	15	16	134	7	—	1	203	—	—	
Colored	B	25	13	15	26	14	8	101	5	—	2	100	—	—	
Madisonville	A	153	141	149	131	94	89	757	26	9	—	60	1,158	29 9	
White	A	122	120	120	110	61	59	592	19	—	1	—	—	—	
Colored	A	31	21	29	21	33	30	165	7	—	3	60	—	—	
<b>JACKSON COUNTY</b>															
County		21	57	71	84	49	37	319	12	9	—	275	3,089	94 8	
McKee	A	14	34	32	46	20	14	160	7	—	2	125	—	—	
Tyner (McKee)	B	7	23	39	38	29	23	159	5	—	—	150	—	—	
Anville Inst. (Pr.)	A	3	8	23	35	30	26	125	11	9	3	235	—	—	
<b>JEFFERSON COUNTY</b>															
County		36	27	600	448	389	255	1,755	83	9	—	2,590	10,373	344 9	
Ballard (Louisville)	9	36	27	15	42	40	26	78	5	—	1	20	—	—	
Fairdale (Coral Ridge)	A	—	—	75	42	40	26	183	8	—	—	400	—	—	
Fern Creek (Buechel)	A	—	—	65	71	51	39	228	12	—	2	420	—	—	
Jeffersontown	A	—	—	63	70	56	47	236	14	—	3	400	—	—	
Okolona (Louisville)	A	—	—	148	110	96	56	410	18	—	2	650	—	—	
<b>Valley (Valley Station)</b>															
Valley (Valley Station)	A	—	—	234	155	146	87	622	26	—	3	700	—	—	
Anchorage	A	—	—	76	61	61	77	275	18	—	2	500	162	6 9	
Jefferson Co. Children's Home (Ormsby Village) (Anchorage)	AE	30	27	23	10	1	9	100	11	—	3	200	—	—	
Ky. Military Inst. (Lyndon) (Pr.)	A	—	10	51	57	80	88	286	21	9	1	350	—	—	
Louisville		3,382	3,016	3,080	2,473	1,959	1,760	15,670	737	9 1/2	—	11,483	23,704	765 9 1/2	
Atherton	A	—	—	—	282	236	209	727	37	—	2	756	—	—	
Central, C.	A	—	—	—	498	359	285	1,142	53	—	5	742	—	—	
Halleck	A	506	521	449	355	268	226	2,325	106	—	3	1,500	—	—	
Male	A	—	—	—	469	417	327	1,213	51	—	1	1,330	—	—	
Manual	A	—	—	—	446	361	280	1,087	53	—	5	750	—	—	
Shawnee	A	203	183	274	225	175	178	1,238	66	—	3	985	—	—	
Barrett Jr.	9	209	182	261	—	—	—	652	33	—	—	575	—	—	
Eastern Jr.	9	348	250	222	—	—	—	820	41	—	—	675	—	—	
Highland Jr.	9	233	235	317	—	—	—	785	34	—	—	500	—	—	
Jackson St. Jr., C.	9	250	210	213	—	—	—	673	32	—	—	500	—	—	
Madison St. Jr., C.	9	581	477	389	—	—	—	1,447	52	—	—	500	—	—	
Parkland Jr.	9	331	303	258	—	—	—	392	41	—	—	500	—	—	
Southern Jr.	9	346	335	252	—	—	—	933	51	—	—	550	—	—	
Western Jr.	9	375	320	293	—	—	—	988	47	—	—	500	—	—	
Ahrens Adult Night H. S.	A	—	—	52	92	101	99	344	19	—	—	850	—	—	
Central Adult Night H. S., C.	A	—	—	100	106	42	156	404	21	—	—	—	—	—	
Kentucky School for Blind (Louisville) (St.)	10E	17	12	9	11	—	—	49	2 1/2	9	—	—	—	—	
<b>Private Schools:</b>															
Catholic Colored	B	—	—	25	23	13	16	77	4	9	1	100	—	—	
Flaget	A	—	—	264	161	157	100	682	19	9	—	—	—	—	
Holy Rosary	A	—	—	38	27	34	49	148	7	9	2	311	—	—	
Ky. Home School for Girls	A	—	11	15	15	14	21	76	7	9	—	276	—	—	
Loretto	A	—	—	56	49	34	37	178	8	9	—	480	—	—	
Louisville Baptist	B	—	—	13	20	8	4	45	5	9	1	500	—	—	
Louisville Collegiate	A	—	16	13	22	13	23	87	8	9	—	90	—	—	
Our Lady of Mercy Ac.	A	—	—	130	123	123	103	479	15	9	2	700	—	—	
Portland Christian	B	15	19	10	17	8	3	72	4	9	—	50	—	—	
Presentation Ac.	A	—	—	173	190	137	132	632	24	9	1	628	—	—	
Rugby U. H. S.	A	5	15	7	8	8	8	51	7	9	—	50	—	—	
Sacred Heart Ac.	A	—	—	60	70	79	74	283	16	9	2	1,692	—	—	
St. Helena Night H. S.	A	—	—	18	21	26	40	105	6	9	1	90	—	—	
St. Xavier	A	—	—	302	335	296	261	1,194	39	9	1	1,000	—	—	
Ursuline Ac.	A	—	—	160	106	102	114	482	24	9	2	559	—	—	
<b>JESSAMINE COUNTY</b>															
County		52	32	121	94	64	62	425	23	9	—	500	1,541	54 9	
Nicholasville, W.	A	39	24	79	44	35	17	238	10	—	2	200	—	—	
Nicholasville, C.	BE	13	8	13	14	5	3	56	4	—	1	—	—	—	
Wilmore	A	—	—	29	36	24	42	131	9	—	2	300	—	—	
<b>JOHNSON COUNTY</b>															
County		22	54	133	131	93	86	519	29	9	—	125	3,848	118 8-9	
Flat Gap	A	—	—	37	31	18	26	112	7	—	—	125	—	—	
Oil Springs	A	—	—	52	55	38	35	180	11	—	2	—	—	—	

986

987

KENTUCKY HIGH SCHOOLS, 1947-48—Continued

County District School	*Rating	High School Enrollment by Grades							Tchs.	Term in Mos.	Voc-ations Taught	Library Approp-riation	Elementary School District		
		7	8	9	10	11	12	Total					Pupils	Tchs.	Term
<b>JOHNSON COUNTY—Cont.</b>															
Williamsport	A	22	54	44	45	37	25	227	11	9	2				
Paintsville	A			64	35	39	43	181	9	9	1	350	857	20	
Van Lear	B			27	22	15	12	76	4	9		100	282	9	
<b>KENTON COUNTY</b>															
County		249	216	172	178	144	145	1,104	53	9		1,050	1,566	56	
Dixie Heights (Covington)	A	119	111	95	92	69	78	564	28		3	500			
S. Kenton (Independence)	A	130	105	77	86	75	67	540	25		4	550			
Beechwood (Ft. Mitchell via Covington)	A	26	18	31	32	35	28	170	9	9	1	390	166	6	
Covington		170	199	478	400	317	266	1,830	79	10		2,403	5,672	235	
Carlisle Jr.	9			47	42	20	16	125	15			663			
Grant, C.	A			289	358	297	250	1,194	52		2	90			
Holmes	A			54	60	37	33	297	14	9	2	1,650	400		
Erlanger	A	65	48	42	56	52	37	273	19	9 1/2	2	500	338	13	
Ludlow	A	49	37											9 1/2	
<b>Private Schools:</b>															
Covington Catholic	A			40	39	34	36	149	6	9		182			
Covington Latin	A			49	50	35	27	161	15	9		275			
Holy Cross (Latonia)	A			67	66	57	53	243	9	9	1	515			
LaSalette Ac. (Covington)	A			55	65	61	50	231	11	9	2	306			
Notre Dame Ac. (Covington)	A			114	98	116	116	444	16	9	2	450			
St. Henry (Erlanger)	A			60	60	35	41	196	7	9	1	201			
St. James (Ludlow)	A			23	14	13	9	59	5	9		125			
Villa Madonna Ac. (Covington)	A			29	31	23	42	125	7	9	1	544			
<b>KNOTT COUNTY</b>															
County		29	44	158	152	113	75	571	30	9		500	4,275	165	
Carr Creek	A	16	29	43	43	30	20	181	8					8	
Cordia	BE			4	10	15	8	37	3						
Hindman	A			88	75	49	39	251	12		3	200			
Pippapass	B	13	15	23	24	19	8	102	7			300			
<b>KNOX COUNTY</b>															
County		60	52	257	190	126	127	812	35	9		650	5,546	144	
Knox Central (Barbourville)	A			155	137	70	90	452	17		3	200		8	
Lynn Camp (Corbin)	A	60	52	52	42	32	21	259	13		2	250			
Barbourville, C.	B			18	11	24	16	69	4			100			
Flat Lick	9			32				32	1			100			
<b>ARTEMUS COUNTY</b>															
Barbourville	B	12	22	20	21	17	12	104	4	9		200	196	4	
	A	69	50	58	35	38	26	276	13	9	1	279	404	10	
<b>LARUE COUNTY</b>															
County		56	67	57	67	38	49	334	12	9		175	1,211	43	
Buffalo	A	41	36	30	36	18	32	193	7		2	50		8	
Magnolia	B	15	31	27	31	20	17	141	5			125			
Hodgenville	A	31	31	45	45	29	39	220	7	9	3	200	299	9	
<b>LAUREL COUNTY</b>															
County				203	230	97	119	649	28	9		550	4,645	133	
Bush (Lida)	A			36	67	21	48	172	8		2	150			
Felts (Corbin)	10E			27	11			38	2			400			
Hazel Green (E. Bernstadt)	A			69	78	31	31	209	9		2				
Lily	A			71	74	45	40	230	9		3	250			
East Bernstadt	B	19	10	30	10	14	8	91	4	9		190	204	5	
London	A	54	63	76	67	39	47	346	8	9	1	200	555	21	
<b>LAWRENCE COUNTY</b>															
County		63	105	145	144	85	77	619	24	9		903	3,127	108	
Blaine	B		26	27	31	9	14	107	4	9		200		8	
Louisa	A	55	62	94	90	66	54	421	16		2	500			
Webbville	B	8	17	24	23	10	9	91	4			203			
<b>LEE COUNTY</b>															
County—Beattyville	A			78	73	29	32	212	12	9	3	500	1,985	61	
Glen Eden (Williba) (Pr.)	B			14	4	8	5	31	3	9	2				
<b>LESLIE COUNTY</b>															
County		25	34	78	72	41	34	284	18	9		245	3,553	117	
Hyden	A	25	34	46	44	30	28	207	14		3	245		8 1/2	
Stinnett (Hoskinston)	B			32	28	11	6	77	4						
<b>LETCHER COUNTY</b>															
County				265	229	144	132	770	33	9		850	7,532	213	
Fleming	A			116	72	40	35	263	12		1	200			
Kingdom Come (Linefork)	B			13	27	14	17	71	4			150			
Whitesburg	A			136	130	90	80	436	17		2	500			
Jenkins	A	68	71	134	89	42	51	455	18 1/2	9		500	1,745	34	
White	A			82	74	30	42	228	12		2	375			
Colored	B	20	27	23	15	12	9	106	4 1/2		1	75			
McRoberts Jr.	9	48	44	29				121	4			50			
Stuart-Robinson (Blackey) (Pr.)	A			86	62	28	32	208	8	9	1	173			
<b>LEWIS COUNTY</b>															
County		46	25	150	109	63	64	457	17	9		385	2,322	78	
Laurel (Camp Dix)	BE	26	10	17	17	7	11	88	3		1	175			
Lewis Co. H. S. (Vanceburg)	A			96	66	40	30	232	7 1/2		2	210			
Tollesboro	A			37	26	16	23	137	6 1/2		2				
Vanceburg	B	20	15												

(Pupils sent to Lewis County High School)



KENTUCKY HIGH SCHOOLS, 1947-48—Continued

County District School	*Rating	High School Enrollment by Grades							Tchs.	Term in Mos.	Voca- tions Taught	Library Appro- priation	Elementary School District		
		7	8	9	10	11	12	Total					Pupils	Tchs.	Term
<b>LINCOLN COUNTY</b>															
County		200	180	178	155	101	102	916	34	9		821	3,179	91	9
Broughtontown (Crab Orchard)	10	18	24	17	15			74	3		110				
Crab Orchard	A	46	35	32	30	27	23	193	8		150				
Highland (Waynesburg)	B	15	27	29	22	15	18	124	4		125				
Hustonville	B	30	26	39	29	22	19	165	6		100				
McKinney	B	40	30	27	21	15	19	152	6		100				
Waynesburg	A	51	38	34	38	24	23	208	7		236				
Stanford	A	52	42	47	55	40	39	275	12 1/2	9	247	292	8 1/2	9	
White	A	38	32	32	35	25	27	189	8 1/2		200				
Colored	B	14	10	15	20	15	12	86	4		47				
<b>LIVINGSTON COUNTY</b>															
County				77	100	61	68	306	11	9		300	1,441	59	8
Salem	B				32	25	23	113	4		100				
Smithland	A			44	68	36	45	193	7		200				
<b>LOGAN COUNTY</b>															
County		181	169	137	148	115	101	851	38	9		455	2,386	78	9
Adairville	A	29	29	26	24	27	23	158	8		150				
Auburn	B	39	51	21	23	21	25	180	8		3				
Chandlers Chapel (Russellville)	B	31	20	17	26	13	7	114	6		3				
Lewisburg	A	44	39	30	45	22	22	202	8		3	175			
Olmstead	A	38	30	43	30	32	24	197	8		3	75			
Russellville	A	65	49	77	48	45	52	336	14	9	440	535	15	9	
White	A	54	45	52	30	29	27	237	10		425				
Colored	B	11	4	25	18	16	25	99	4		15				
<b>LYON COUNTY</b>															
County		66	88	83	71	40	48	396	14 1/2	9		30	868	38	8
Co. Sr. H. S. (Kuttawa)	A				71	40	48	159	7		3				
Co. Jr. H. S. (Eddyville)	9	66	88	83				237	7 1/2			30			
<b>MADISON COUNTY</b>															
County				176	115	88	94	473	30	9		1,204	2,841	86	8
Central (Richmond)	A			72	38	33	27	170	8		3	500			
Kingston (Berea)	A			51	36	12	30	129	8		2	196			
Kirksville	B			23	17	24	14	78	7		3	358			
Waco	A			30	24	19	23	96	7		1	150			
Berea	A	50	46	44	24	25	23	212	8	9	500	288	6	9	
<b>RICHMOND COUNTY</b>															
County		140	108	109	120	79	75	631	34	10		700	636	24	10
White	A	110	77	59	63	63	50	402	23		2	500			
Colored	A	30	31	50	57	16	25	229	11		3	200			
Berea Ac. (Pr.)	A			85	94	71	100	350	20	9		4,716			
<b>MAGOFFIN COUNTY</b>															
County		41	54	117	112	75	66	465	21	9		250	2,665	140	8
Royalton	B	8	3	31	13	15	10	80	5			50			
Salersville	A	33	51	86	99	60	56	385	16		2	200			
<b>MARION COUNTY</b>															
County		20	15	112	112	84	77	420	20	9		503	2,158	64	9
Bradfordsville	B	20	15	19	28	9	15	106	5		2	71			
Holy Cross (Loretto)	B			21	25	11	16	73	3		1	125			
St. Charles (Lebanon)	A			46	43	51	40	180	9		3	180			
St. Francis	B			26	16	13	6	61	3		2	127			
Lebanon				82	56	46	56	240	13	9		270	566	16	9
White	A			31	31	32	24	130	9		2	197			
Colored	B			39	25	14	32	110	4		1	75			
St. Augustine (Lebanon) (Pr.)	A			26	26	18	21	91	5	9		275			
St. Mary's College H. S. (Pr.)	A			33	26	22	22	103	6	9		150			
<b>MARSHALL COUNTY</b>															
County				108	100	72	63	343	15	9		694	1,722	51	8
Brewers	B			24	12	21	13	70	3		2	400			
Calvert City	B			37	19	16	14	86	4		2	75			
Hardin	B			31	38	21	21	111	4		1	150			
Sharpe (Calvert City)	B			16	31	14	15	76	4		1	69			
Benton	A			64	70	34	41	209	8 1/2	9	3	50	400	9	8
<b>MARTIN COUNTY</b>															
County		89	95	97	82	30	56	449	15	9		610	2,369	76	8
Inez	A	33	46	48	45	15	32	219	7 1/2		2	250			
Warfield	A	56	49	49	37	15	24	230	7 1/2		3	360			
<b>MASON COUNTY</b>															
County		139	101	99	105	75	60	579	31 1/2	9		1,075	1,526	60 1/2	9
Mayslick	A	15	8	24	35	25	21	128	8 1/2		3	300			
Minerva	B	22	19	23	23	20	17	124	7		3	225			
Orangeburg (Maysville)	A	22	13	14	47	30	22	148	8		3	250			
Lewisburg Jr. (Maysville)	9E	17	13	9				39	2 1/2			100			
Washington Jr.	9E	21	19	6				46	2 1/2			105			
Woodleigh Jr. (Maysville)	9	42	29	23				94	3			85			
Maysville		74	86	98	87	81	68	494	25	10		564	566	21	10
White	A	59	54	68	57	45	48	331	17		2	400			
Colored	A	15	32	30	30	36	20	163	8		2	164			
St. Patrick (Maysville) (Pr.)	A			16	16	10	17	59	6	10	1	185			
<b>McCRACKEN COUNTY</b>															
County		53	169	164	154	159	137	836	32	9		525	1,951	61	8
Heath (Paducah)	A		74	45	46	41	46	252	10 1/2		3	200			

066

166

KENTUCKY HIGH SCHOOLS, 1947-48—Continued

County District School	*Rating	High School Enrollment by Grades							Tchs.	Term in Mos.	Voca- tions Taught	Library Appro- priation	Elementary School District		
		7	8	9	10	11	12	Total					Pupils	Tchs.	Term
<b>McCRACKEN COUNTY—Cont.</b>															
Lone Oak (Paducah)	A	53	64	56	57	55	54	339	11	—	3	300	—	—	
Reidland (Paducah)	A	—	31	63	51	63	37	245	10½	—	3	25	—	—	
Paducah		384	344	336	297	241	216	1,818	95	9	—	1,580	2,873	92	
Lincoln, C.	A	82	40	50	48	33	30	283	17	—	1	285	—	—	
Tilghman	A	—	—	—	249	208	186	643	35	—	3	600	—	—	
Brazelton Jr.	9	82	65	71	—	—	—	218	10	—	—	195	—	—	
Franklin Jr.	9	102	100	80	—	—	—	282	12	—	—	300	—	—	
Washington Jr.	9	118	139	135	—	—	—	392	21	—	—	200	—	—	
St. Mary (Paducah) (Pr.)	A	—	—	32	31	34	30	127	5	9	—	131	—	—	
<b>McCREARY COUNTY</b>															
County		10	7	147	85	88	73	410	17	9	—	385	3,710	92	
Cooperative	10E	10	7	9	3	—	—	29	2	—	—	—	—	—	
Pine Knot	A	—	—	39	23	28	31	121	6	—	1	125	—	—	
Whitley City	A	—	—	99	59	60	42	260	9	—	2	260	—	—	
Stearns	A	—	—	38	28	19	20	105	5	9	—	300	417	11	
<b>McLEAN COUNTY</b>															
County		113	125	112	109	92	78	629	24	9	—	575	1,184	34	
Beech Grove	B	24	21	16	20	16	12	109	5	—	1	75	—	—	
Calhoun	A	56	64	56	47	39	33	295	10	—	2	300	—	—	
Sacramento	A	33	40	40	42	37	33	225	9	—	3	200	—	—	
Livermore	B	29	26	26	25	27	17	150	5	9	1	200	232	7	
<b>MEADE COUNTY</b>															
County		50	37	89	84	62	63	385	16	9	—	350	1,499	51	
Brandenburg	A	50	37	58	59	39	47	290	11	—	2	150	—	—	
Flaherty (Vine Grove)	B	—	—	31	25	23	16	95	5	—	2	200	—	—	
<b>MENIFEE COUNTY</b>															
County		—	—	44	51	32	30	157	9	9	2	192	1,158	49	
Frenchburg (Pr.)	A	—	—	—	—	—	—	—	—	—	—	—	—	8	
<b>MERCER COUNTY</b>															
County		—	—	109	76	63	59	307	18	9	—	294	1,227	45	
Cornishville	BT	—	—	12	13	7	11	43	4	—	—	40	—	—	
Fairview (Bondville)	10	—	—	23	16	—	—	39	2	—	—	23	—	—	
McAfee	B	—	—	20	10	23	18	71	4	—	1	71	—	—	
Rose Hill	B	—	—	35	22	16	16	89	4	—	1	100	—	—	
Salvisa	B	—	—	19	15	17	14	65	4	—	1	60	—	—	
<b>Burgin</b>															
Harrodsburg	AT	—	—	25	26	20	20	91	5	9	—	174	218	9	
White	A	14	18	81	64	55	62	294	17	9	—	295	477	19	
Colored	BE	14	18	14	8	35	15	205	12	—	2	210	—	—	
<b>METCALFE COUNTY</b>															
County		—	—	51	79	23	69	222	12	9	—	300	1,879	64	
Center	B	—	—	8	24	9	19	60	3	—	—	50	—	—	
Edmonton	A	—	—	22	43	12	32	109	6	—	2	200	—	—	
Summershade	BE	—	—	21	12	2	18	53	3	—	—	50	—	—	
<b>MONROE COUNTY</b>															
County		12	38	58	138	72	80	398	20	8	—	450	2,855	83	
Fountain Run	B	—	—	9	22	11	18	60	3	—	—	100	—	—	
Gamaliel	B	12	38	20	30	20	22	142	7½	—	2	100	—	—	
Tompkinsville	A	—	—	29	86	41	40	196	9½	—	2	250	—	—	
<b>MONTGOMERY COUNTY</b>															
County		—	—	60	43	24	21	148	6	9	—	260	1,325	37	
Camargo (Mt. Sterling)	A	—	—	33	26	24	21	109	6	—	2	200	—	—	
Co. Trg. (Mt. Sterling), C.	10T	—	—	22	17	—	—	39	2	—	—	60	—	—	
Mt. Sterling		—	—	95	82	73	58	308	12	10	—	525	627	23	
White	A	—	—	87	73	57	49	266	9	—	2	300	—	—	
Colored	BE	—	—	8	9	16	9	42	3	—	1	225	—	—	
<b>MORGAN COUNTY</b>															
County		86	76	81	75	47	58	423	19	9	—	750	2,896	110	
Cannel City	B	36	32	13	28	8	20	142	8	—	—	250	—	—	
West Liberty	A	50	44	63	47	39	38	281	11	—	2	500	—	—	
Ezel (Pr.)	A	18	31	26	23	18	23	139	7	9	1	150	—	—	
<b>MUHLENBERG COUNTY</b>															
County		158	133	218	214	134	153	1,010	42	9	—	760	4,568	130	
Bremen	A	68	55	52	25	28	20	248	9	—	1	150	—	—	
Drakesboro	A	—	—	51	45	29	34	159	7	—	—	200	—	—	
Drakesboro, C.	B	23	21	21	12	16	12	105	6	—	1	100	—	—	
Dunmor	A	—	—	16	29	10	24	79	3	—	—	35	—	—	
Graham	A	—	—	39	58	23	36	156	7½	—	2	125	—	—	
Hughes-Kirk. (Browder)	A	67	57	39	45	28	27	263	9½	—	3	150	—	—	
Bevier-Cleaton (Cleaton)	B	14	15	19	25	6	48	91	4	9	—	100	204	4	
Central City	A	50	69	82	74	54	48	377	16	9	2	400	518	17	
Greenville	A	77	60	55	40	40	40	312	14	9	—	250	497	17	
<b>NELSON COUNTY</b>															
County		—	—	93	76	86	37	292	16	9	—	400	2,155	78	
Bloomfield	A	—	—	48	28	27	21	124	7	—	3	100	—	—	
Old Ky. Home (Bardstown)	A	—	—	45	48	59	16	168	9	—	3	300	—	—	
Bardstown		27	25	47	42	26	34	201	13	9	—	417	271	12	
White	A	18	17	24	26	16	23	124	9	—	2	342	—	—	
Colored	B	9	8	28	16	10	11	77	4	—	1	75	—	—	

992

993

KENTUCKY HIGH SCHOOLS, 1947-48—Continued

County District School	*Rating	High School Enrollment by Grades							Tchs.	Term in Mos.	Voca- tions Taught	Library Appro- priation	Elementary School District		
		7	8	9	10	11	12	Total					Pupils	Tchs.	Term
<b>NELSON COUNTY—Cont.</b>															
Private Schools:															
Bethlehem Ac. (Bardstown)	B			29	16	14	16	75	4	9		300			
Nazareth Ac.	A			31	25	23	32	111	11	9	1	667			
St. Catherine Ac. (New Haven)	B			22	24	23	17	86	4	9	1	72			
St. Joseph's Prep. (Bardstown)	A	12	17	47	37	32	29	174	12	9		200			
<b>NICHOLAS COUNTY</b>															
Co. H. S. (Carlisle)	A			37	42	18	23	120	8	9	3	400	840	26	9
Carlisle	A	24	33	35	17	25	37	171	10	9	3	250	216	8	9
<b>OHIO COUNTY</b>															
County				252	251	149	150	802	44	9		1,235	3,587	104	9
Beaver Dam	A			52	35	21	21	129	7		3	150			
Centertown	B			36	23	11	24	94	5		1	90			
Central Park (McHenry)	B			17	26	20	14	77	3			150			
Cromwell	B			13	24	11	9	62	3			75			
Dundee	B			28	14	11	16	69	5		2	147			
Fordsville	B			17	29	21	17	84	6		1	125			
Hartford	B			42	50	30	23	145	8		2	150			
Horse Branch	B			22	30	11	17	80	4			200			
Rockport	B			20	20	13	9	62	3			146			
<b>OLDHAM COUNTY</b>															
County				104	81	44	47	276	14	9		200	1,264	39	9
Crestwood	B			28	23	16	19	86	6		2	8			
LaGrange, W.	A			65	46	23	28	167	7		2	176			
LaGrange, C.	10E			11	12			23	1			16			
<b>OWEN COUNTY</b>															
County				60	46	22	28	162	8	9		300	1,147	37	8
Bethany (Beechwood)	B			22	18	15	6	61	4		1	200			
New Liberty	B			33	28	13	22	101	4		1	100			
Owenton	A			44	45	40	32	161	8	9	2	200	209	6	9
<b>OWSLEY COUNTY</b>															
County—Booneville	A	44	44	54	58	19	29	248	9	9	2	250	1,809	50	8
<b>PENDLETON COUNTY</b>															
County				95	63	53	55	266	13	9		175	1,092	38	8
<b>Butler</b>															
Butler	A			54	37	28	80	149	7		2	75			
Morgan	A			41	26	25	25	117	6		3	100			
Falmouth	B	34	29	25	22	23	15	148	7	9	1	150	220	7	9
<b>PERRY COUNTY</b>															
County		115	96	266	243	141	131	992	37	9		1,473	8,544	233	9
Blue Diamond	B	66	40	32	20	17	15	190	7			500			
Combs	A			37	42	20	22	121	4						
Robinson (Ary)	A	17	20	64	61	36	30	228	8		1	200			
Vico	AT	32	36	41	34	21	23	187	6			500			
Viper	A			60	50	31	13	154	5			200			
Witherspoon (Buckhorn)	A			32	36	16	28	112	7		3	73			
Hazard	A	20	10	116	88	93	82	409	17	9		600	1,815	48	9
White	A			96	74	79	69	313	13		2	500			
Colored	B	20	10	20	14	14	13	91	4		1	100			
<b>PIKE COUNTY</b>															
County		54	51	551	464	342	263	1,725	68	9		1,980	16,295	417	9
Belfry	A			192	142	135	99	568	24		5	575			
Dorton	A			55	29	23	29	116	5		1	200			
Peds Creek	A			51	46	30	22	149	5		1	30			
Hellier	A			45	40	27	27	139	6		1	200			
Johns Creek (Pikeville)	B			43	32	20	16	111	4		1	250			
Phelps	A	54	51	52	43	19	4	223	7		1	200			
Virgie	A			54	67	36	22	179	8		1	250			
Pikeville	A			79	65	52	44	240	9		3	275			
White	A			150	113	101	111	475	20 1/2	9		700	1,027	21	9
Colored	BE			136	107	97	107	447	18		2	450			
Pikeville Ac. (Pr.)	A			14	6	4	4	28	2 1/2			250			
				23	15	14	18	70	5			50			
<b>POWELL COUNTY</b>															
County—Stanton	A			44	38	27	27	136	7	9	1	50	1,420	52	8
<b>PULASKI COUNTY</b>															
County				266	182	144	134	726	31	9		775	5,563	192	8
Eubank	A			109	67	62	61	299	11		2	300			
Mt. Victory	BE			21	15	4	8	48	3		1	75			
Nancy	A			69	41	52	36	198	9		2	250			
Shopville	A			67	59	26	29	151	8		2	150			
Burnside	B	31	17	26	14	9	13	110	4 1/2	9		175	151	4	9
Ferguson (Luretha)	B			24	30	25	17	96	4		1	100	204	8	9
Science Hill	B	16	17	15	17	15	16	96	5	9	2	100	135	3	9
Somerset	A	11	9	121	124	123	98	486	26	9		600	1,291	40	9
White	A			106	109	109	86	410	21		3	500			
Colored	BE	11	9	15	15	14	12	76	5		1	100			
<b>ROBERTSON COUNTY</b>															
County—Mt. Olivet	B	46	33	32	27	22	18	178	6	9	1	200	332	10	9

984

985

KENTUCKY HIGH SCHOOLS, 1947-48—Continued

County District School	*Rating	High School Enrollment by Grades							Tchs.	Term in Mos.	Voca- tions Taught	Library Appro- priation	Elementary School District						
		7	8	9	10	11	12	Total					Pupils	Tchs.	Term				
<b>ROCKCASTLE COUNTY</b>																			
County				47	26	29	23	125	4	9		200	2,615	92	8				
Brodhead	B			23	19	16	9	66	3	9		150	275	8	9				
Livingston	B											150	175	5	8				
Mt. Vernon	A			89	61	64	57	271	8 1/2	9	2	300	393	10	9				
<b>ROWAN COUNTY</b>																			
County		81	84	93	94	53	51	456	19 1/2	9		199	2,124	73	8-9				
Elliottville	9	18	20	19				57	2			30							
Haldeman	A	26	25	25	26			103	4 1/2			69							
Morehead	A	27	38	49	68	53	51	296	13		2	100							
Morehead College Training School (St.)	A	27	23	22	20	16	23	131	9	9	1	162							
<b>RUSSELL COUNTY</b>																			
County		61	70	110	110	56	61	468	20	9		636	2,808	95	8				
Jamestown	A	21	32	38	41	25	31	188	9		3	216							
Russell Springs	A	40	38	72	69	31	30	280	11			420							
<b>SCOTT COUNTY</b>																			
County		94	63	102	89	63	67	478	27	9		412	1,320	46	9				
Great Crossings (Georgetown)	B	31	19	21	19	15	19	124	6 1/2		3	50							
Oxford (Georgetown)	A	25	23	31	31	19	19	148	7 1/2		3	100							
Sadleville	B	38	21	26	15	13	11	124	6 1/2		2	62							
Stamping Ground	B			24	24	16	18	82	6 1/2			200							
Georgetown		61	58	60	57	71	53	360	20 1/2	9		373	401	13	9				
White	A	53	43	37	35	43	31	242	14 1/2		2	223							
Colored	B	8	15	23	22	28	22	118	6	9	2	150							
Cardome Ac. (Georgetown) (Pr.)	A			12	17	11	23	63	5			200							
<b>SHELBY COUNTY</b>																			
County		194	155	157	125	102	92	826	36	9		754	1,579	52	9				
Bagdad	B	29	28	19	28	14	13	136	6		2	80							
Cropper	B	17	10	21	14	14	15	91	4			90							
Finchville	BE	30	22	16	11	9	9	97	4			80							
Gleneyrie (Shelbyville)	BE	21	17	19	16	13	9	95	4			80							
Henry Clay (Shelbyville)	BE	28	19	21	6	15	11	100	4		1	100							
Mt. Eden	BE	22	20	12	19	14	7	94	4			94							
Simpsonville	B	28	25	25	15	17	9	119	6		2	70							
Waddy	B																		
Shelbyville	B	19	14	24	16	6	15	94	4		1	150							
Lincoln Inst., C. (St.) (Lincoln Ridge)	A	60	60	59	58	51	44	332	14	9	2	335	651	19	9				
<b>SIMPSON COUNTY</b>																			
County		184	149	90	117	92	97	729	29	9		450	1,386	39	9				
Senior (Franklin)	A							260	11		2	200							
Junior (Franklin)	9	155	126	82	97	83	80	363	13			150							
Franklin, C.	B	29	23	8	20	9	17	106	5		1	100							
<b>SPENCER COUNTY</b>																			
County—Taylorsville	A	49	50	49	32	29	38	247	9	9	3	250	762	28	9				
<b>TAYLOR COUNTY</b>																			
Co. H. S. (Campbellsville)	A			94	75	46	32	247	8		2	259	1,734	71	8				
Campbellsville	A			76	62	51	45	234	11	9		300	677	19	9				
White	A			57	41	39	36	173	8		2	250							
Colored	B			19	21	12	9	61	3		1	50							
<b>TODD COUNTY</b>																			
County		23	22	139	81	81	76	422	19 1/2	9		577	1,788	50	9				
Clifty	B			34	15	15	12	76	4			137							
Elkton, W.	A			52	30	33	45	160	7		3	200							
Elkton, C.	B			32	15	18	14	79	3 1/2		1	140							
Guthrie	B	23	22	21	21	15	5	107	5		2	100							
Trenton	B			23	21	9	10	63	4	9	1	200	287	9	9				
<b>TRIGG COUNTY</b>																			
County—Cadiz	A	53	72	71	90	38	54	378	14	9	3	300	1,760	61	9				
<b>TRIMBLE COUNTY</b>																			
County		74	76	63	64	25	28	330	12	8		110	734	19	8				
Bedford	A	53	51	42	49	12	12	219	8		1	110							
Milton	B	21	25	21	15	13	16	111	4		1								
<b>UNION COUNTY</b>																			
County				148	150	128	110	536	31	9		1,200	1,629	51	9				
Morganfield, W.	A			66	44	52	42	204	12		3	600							
Morganfield, C.	B			12	33	9	10	64	4										
Sturgis	A			70	73	67	58	268	15		3	600							
Uniontown	B			27	19	10	14	70	3	9	1	300	230	9	9				
St. Agnes (Uniontown) (Pr.)	B			14	13	12	13	52	4	9	1	60							
St. Vincent (Pr.)	A			33	38	36	20	127	6 1/2	9	1	192							
<b>WARREN COUNTY</b>																			
County		83	83	117	116	81	60	540	22 1/2	9		300	3,383	96	8				
Alvaton	B			39	27	24	16	106	4		2	50							
Bristow	A	37	30	14	31	23	16	151	5 1/2		1								
Richardsville	A	46	53	38	37	12	14	200	8		2	150							
N. Warren (Smiths Grove)	B			26	21	22	14	83	5		2	100							
S. Warren (Rockfield)	A			51	38	38	37	164	8		3	200							

997

966

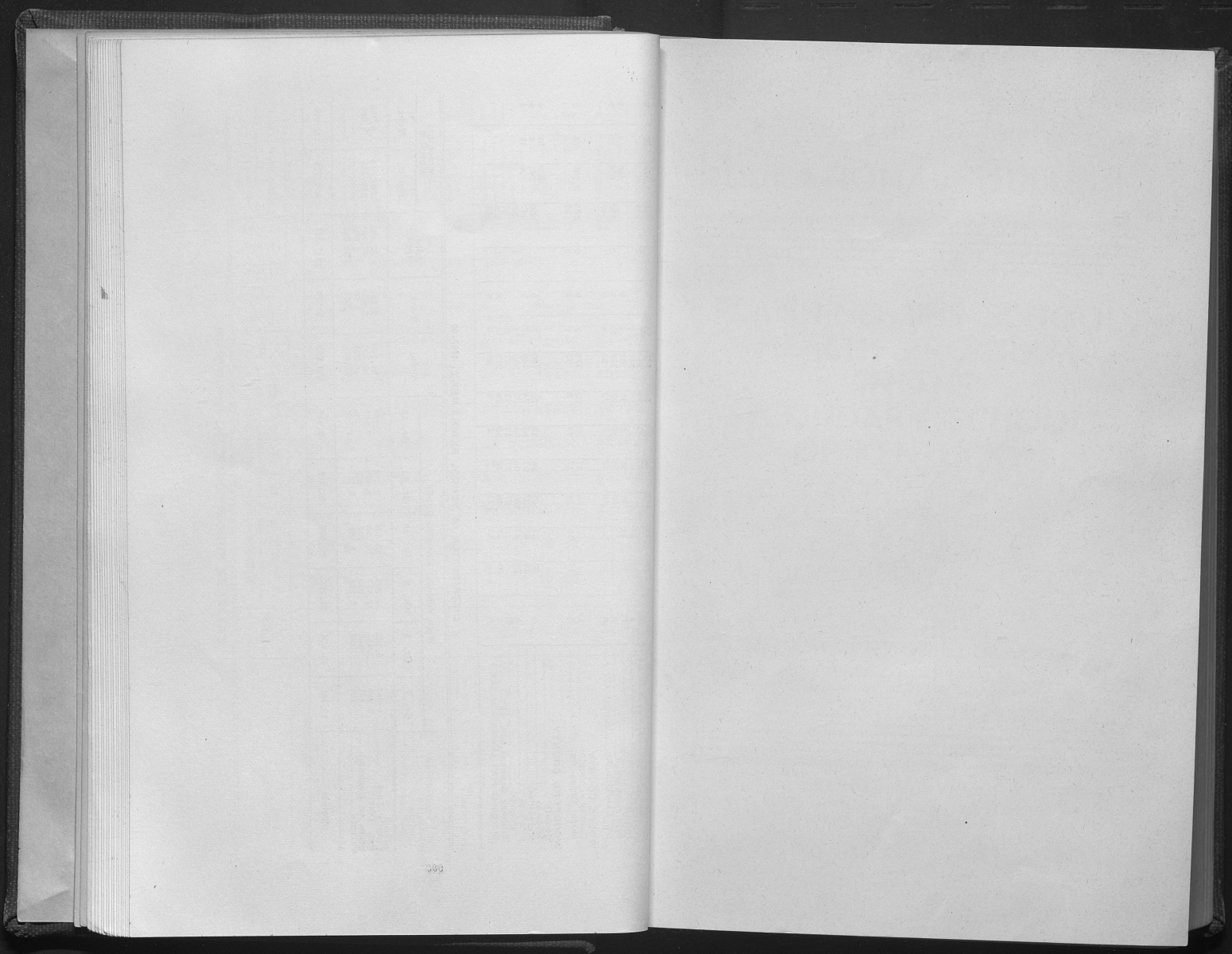
KENTUCKY HIGH SCHOOLS, 1947-48—Continued

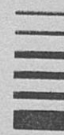
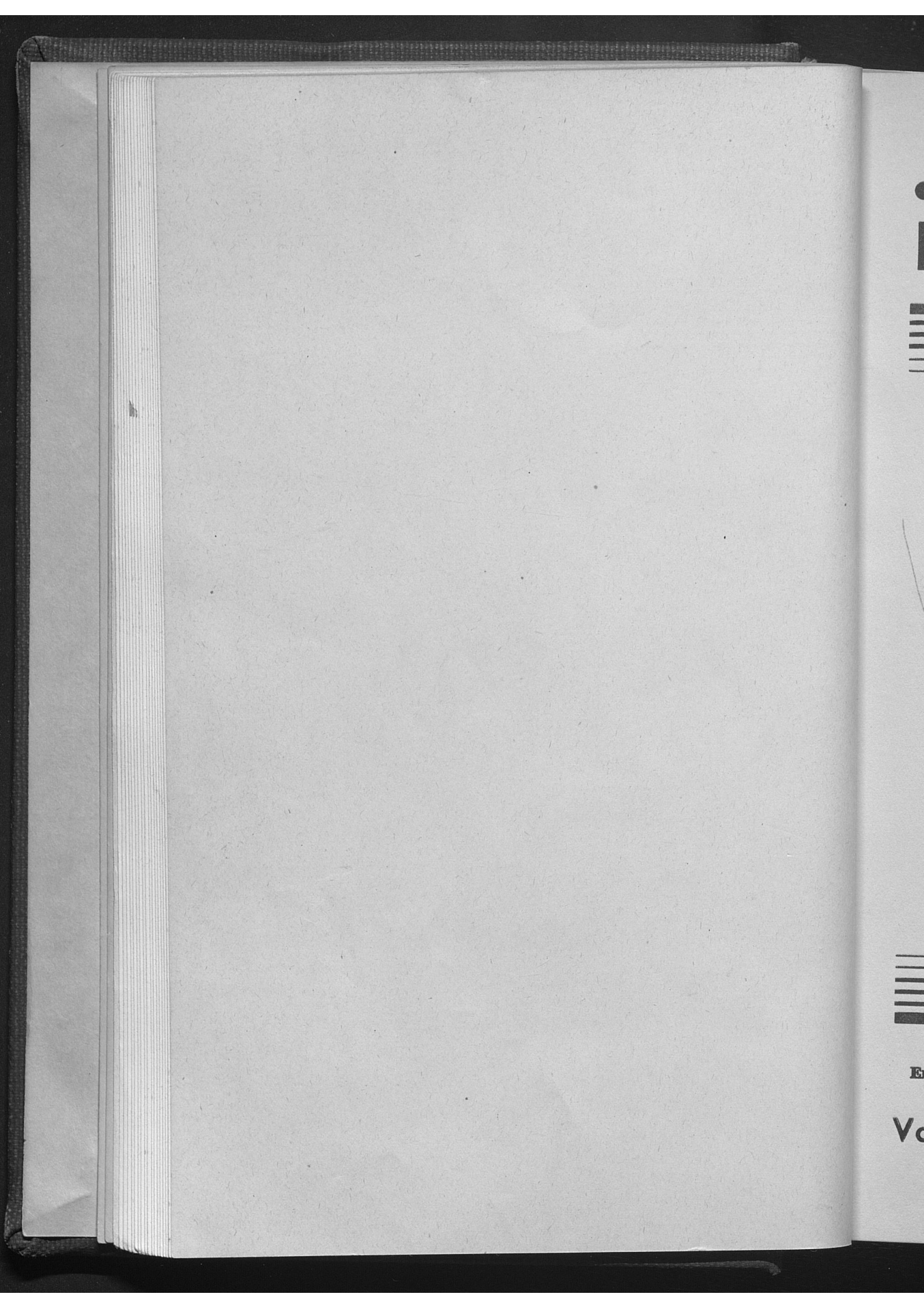
County District School	*Rating	High School Enrollment by Grades							Tchs.	Term in Mos.	Vocational Taught	Library Appropriation	Elementary School District		
		7	8	9	10	11	12	Total					Pupils	Tchs.	Term
<b>WARREN COUNTY—Cont.</b>															
Bowling Green		183	177	211	166	161	147	1,045	40	9		800	1,326	42	9
White	A	144	141	138	116	126	104	769	30		1	600			
Colored	A	39	36	73	50	35	43	276	10			200			
Western St. C. Trg. Sch. (Bowling Green) (St.)	A	39	28	61	54	62	49	293	16	9	2	662			
Bowling Green Bus. U. (Pr.)	A				104	73	32	209	7	9	2	1,071			
<b>WASHINGTON COUNTY</b>															
County				69	82	49	54	254	13	9		45	1,792	59	9
Fredericktown (Springfield)	B			28	24	16	20	88	5		1	45			
Mackville	B			17	33	17	17	84	5		1				
Willisburg	B			24	25	16	17	82	4		1				
Springfield	A			44	22	38	18	122	6 1/2	9	1	201	317	11	9
St. Catharine Ac. (Pr.)	A			10	14	17	16	57	9	9	1	300			
<b>WAYNE COUNTY</b>															
County H. S. (Monticello)	A		146	77	88	41	50	402	13	9	2	340	3,228	100	8
Monticello	B			26	16	13	20	75	6	9	1	200	415	10	9
<b>WEBSTER COUNTY</b>															
County				124	95	84	74	377	20	9		600	1,276	40	9
Dixon	AT			36	25	24	12	97	5		2	300			
Onton	BE			16	12	9	16	53	3		1	50			
Poole	B			24	17	15	11	67	4			100			
Slaughters	B			15	16	16	14	61	4			50			
Wheatcroft	B			33	25	20	21	99	4		2	100			
Clay	A			14	22	21	12	69	4	9	1	150	222	8	9
Providence	A	17	16	63	74	40	43	253	11	9		330	511	13	9
White	A			45	58	30	33	166	8		2	250			
Colored	BE	17	16	18	16	10	10	87	3			80			
Sebree	B	32	12	18	15	16	19	112	5	9	1	100	169	5	9
<b>WHITLEY COUNTY</b>															
County				243	190	134	94	651	22 1/2	8		200	4,812	146	8
Pleasant View	A			44	40	19	18	121	5		1	100			
Poplar Creek (Carpenter)	B			46	28	41	19	134	4						
Rockhold	B			43	44	33	17	137	4						
Woodbine	A			110	68	41	40	259	9 1/2	8	3	100			

Corbin															
Senior		73	50	118	122	92	84	549	18	9		595	1,170	27	9
Junior	A				122	92	84	298	11		2	595			
Gatliff	BT	73	50	118				241	7						
Williamsburg	A	15	11	19	18	5	13	81	4	9					
St. Camillus Ac. (Corbin) (Pr.)	A			58	38	38	33	167	10	9	2	300	626	18	9
<b>WOLFE COUNTY</b>															
County—Campton				18	12	9	12	51	5	9	1	147			
Hazel Green Ac. (Pr.)	A			66	57	30	20	173	7	9	2	300	2,095	76	9
<b>WOODFORD COUNTY</b>															
County												50			
Midway															
Versailles	A	23	31	41	24	19	22	160	7	9			839	34	9
White	A	39	47	127	91	68	74	446	17	9		500	243	8	9
Colored	B	39	47	100	64	50	59	359	14		3	447	496	16	9
Midway Orphans Sch. (Pr.)	A			27	27	18	15	87	3			360			
Margaret Hall (Versailles) (Pr.)	A	25	25	46	38	42	29	212	14	9	2	87			
			11	11	7	8	9	46	9	9		436			
												366			

DISTRIBUTION OF SCHOOL ENROLLMENT, 1947-48

	High Schools, Enrolled Pupils						Total	Tchs.	Libr. Appr.	Elementary Enrolled	
	Gr. 7	Gr. 8	Gr. 9	Gr. 10	Gr. 11	Gr. 12				Pupils	Tchs.
County Dist.	6,563	6,762	15,091	13,466	9,384	8,700	59,966	2,596	\$ 63,035	309,510	9,780
Ind. Dist.	8,898	8,433	12,483	10,793	8,678	7,967	57,302	2,630	57,958	103,265	3,305
State or Regional	161	146	296	258	209	204	1,274	79	1,579		
Private	109	283	3,236	3,090	2,737	2,560	12,015	631	24,546		
<b>Totals</b>	<b>15,731</b>	<b>15,674</b>	<b>31,106</b>	<b>27,607</b>	<b>21,008</b>	<b>19,481</b>	<b>130,557</b>	<b>5,936</b>	<b>\$147,118</b>	<b>412,775</b>	<b>13,085</b>





**Et**

**Vo**