

copy 2

# ALABAMA vs. KENTUCKY

**HOMECOMING**  
**OCTOBER 29, 1938**



# THE KENTUCKIAN

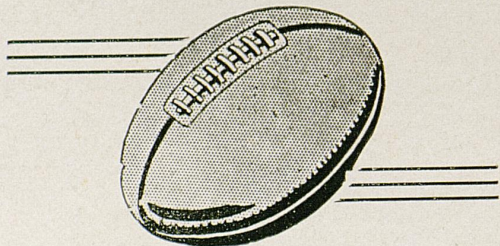
LEXINGTON'S NEWEST HOTEL

YOU'LL FIND YOUR VISIT TO OUR  
HOTEL AS PLEASING AS A  
"WILDCAT VICTORY"

FRIENDLY, PERSONALIZED SERVICE  
RADIO, BATH AND ICE WATER IN EVERY ROOM

NEW AIR CONDITIONED GRILL ROOM  
AIR CONDITIONED GUEST ROOMS

PLENTY OF KICKS—  
but NO COMPLAINTS



Plenty of long kicks, too! For every record kick ever recorded in football was made with a Spalding Official Ball.

In fact, the whole history of the Spalding J5-V Official Intercollegiate Football is liberally sprinkled with record-breaking performances.

Again this year, when America's outstanding elevens go into action you'll see the J5-V boring through the air on hundreds of gridirons—gaining maximum yardage on passes, punts and place-kicks.

*A. G. Spalding & Bros.*  
Athletic Goods Manufacturers

A Double  
Sweetheart



Copyright, 1938, by  
P. Lorillard Co., Inc.

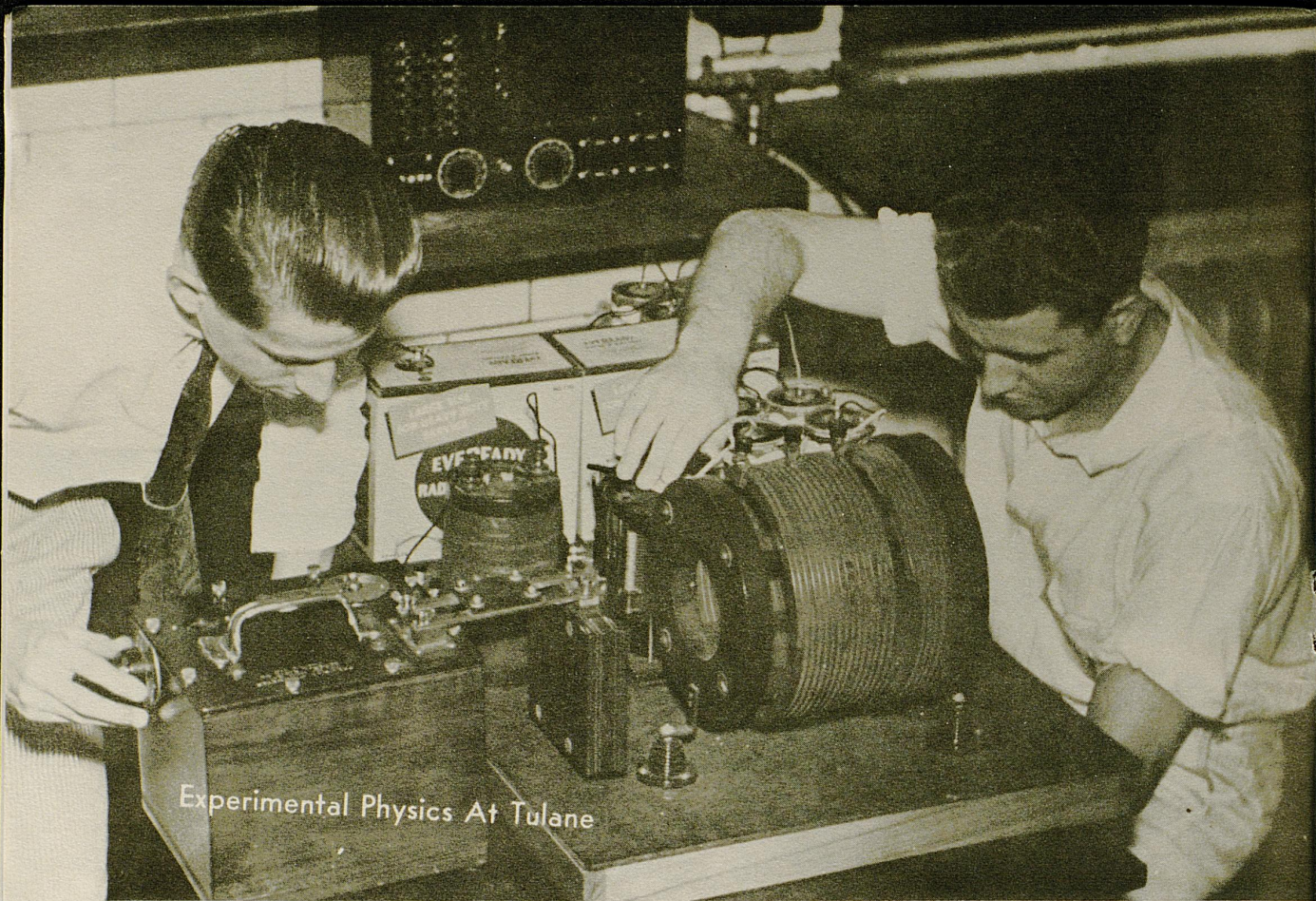
Old Gold's prize crop tobaccos  
are double mellow, double  
sealed in double Cellophane  
for true freshness.

For Finer, FRESHER Flavor,  
Smoke Double-Mellow Old Golds



# CAMPUS CAMERA

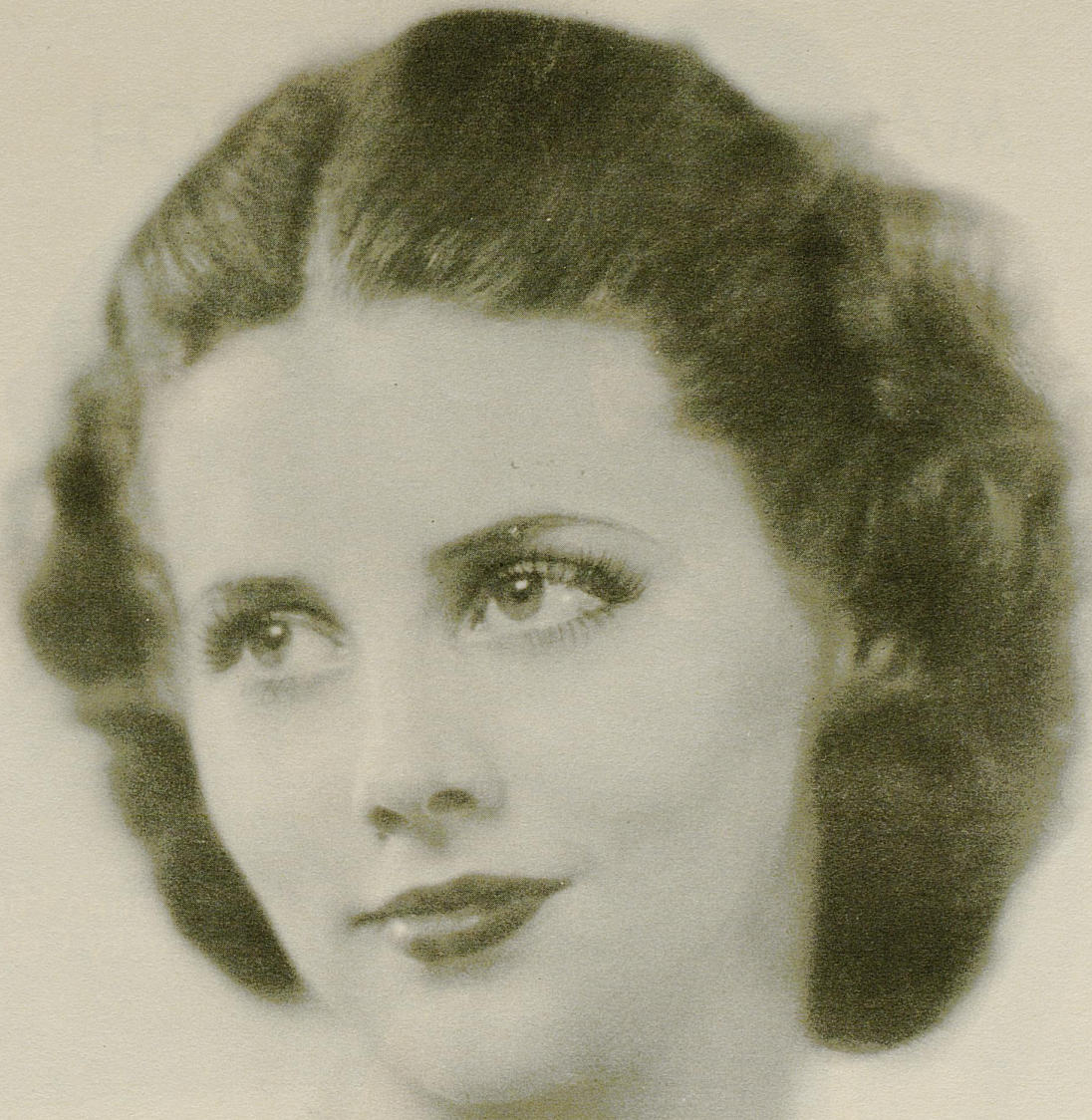
COPYRIGHT 1938 BY SOUTHEASTERN FOOTBALL PROGRAM ASSOCIATION



Experimental Physics At Tulane



Tulane's Freshman Chemistry



Carrie Conkling--'Bama Beauty



Capt. Sherman Hinkebein  
Kentucky Center

The Official Kentucky-Alabama  
**FOOTBALL PROGRAM**

**KENTUCKY vs. ALABAMA**

Stoll Field, Lexington

Saturday, October 29, 1938

OFFICIALS

T. G. KAIN, *Georgia* ..... Referee  
JOHN E. PITTS, *Auburn* ..... Umpire  
LEE R. TOLLEY, *Sewanee* ..... Headlinesman  
WILSON COLLINS, *Vanderbilt* ..... Field Judge

Published by the Athletics Department of the University of Kentucky, Lexington

*Quality Always*



*Instant Freeze*

**ICE CREAM**

After the  
Game, I'll  
Meet You  
In the  
"Paddock"



When the Last Whistle Blows  
Rush to

**"The Paddock"**

Across Euclid on Rose

COUNTRY HAM      FRIED CHICKEN  
STEAK AND SEA FOOD  
LUNCHEONS AND DINNERS  
SANDWICHES AND DRINKS

TOUGH AND STRONG

LAST TWICE AS LONG

MULE HIDE ASPHALT SHINGLES

Let us give you a free estimate on a better,  
more attractive roof.

**Smith - Haggard Lumber Co.**  
(Incorporated)

BUILDING CONTRACTORS

Phones 483 - 3497

901 E. Third St.

"The Pause That Refreshes"

COCA COLA  
BOTTLING  
WORKS



541 W. Short St.

LEXINGTON, KY.

Phone 641

## A DOUBLE FEATURE



●  
A TOPCOAT  
*On Cool Days*

●  
AN OVERCOAT  
*On Cold Days*

## A REMOVABLE ZIPPER LINING

*DOES THE TRICK!*

Sounds like an ideal coat to wear to football games. It is! On cool days without the lining, you have a comfortable topcoat. On cold days, you zip the lining in . . . and you're warm no matter how the wind sweeps through the stadium. The DOUBLE FEATURE is an idea that will click with you as soon as you see the line-up of these coats at Graves-Cox. Why not try some on after the game?

35.00 and 40.00

**GRAVES COX**  
AND COMPANY INC.  
*Established*  
1888





FRANK LEROND McVEY  
*President, University of Kentucky*

Regardless of the outcome of the Kentucky-Alabama contest this afternoon, every alumnus, all friends of the University and ardent football fans are welcomed to the event of the day, because the big thing is to be here and to take part in the Homecoming celebration. Welcome to all. Welcome too, are the team and friends of Alabama.

FRANK L. McVEY

THE  
Phoenix Hotel

LEXINGTON, KY.

Where the Students of the University have met  
each year since 1866

HEADQUARTERS  
FOR  
VISITING TEAMS  
AND  
ALUMNI

- Comfortable Rooms
- Fountain Terrace Dining Room
- Air Conditioned Coffee Shop
- A.A.A. Garage Service

The Phoenix Hotel—Down Town Alma Mater  
University of Kentucky Alumni

Robert Hays, '21  
President

Albert E. Hukle, '22  
Assistant Manager

John G. Gramer  
Manager



Taylor Tire Co.  
Incorporated

COMPLETE ONE STOP  
SERVICE

VINE AND SOUTHEASTERN  
PHONE 2030



BREAD  
IS  
ENERGY  
EAT

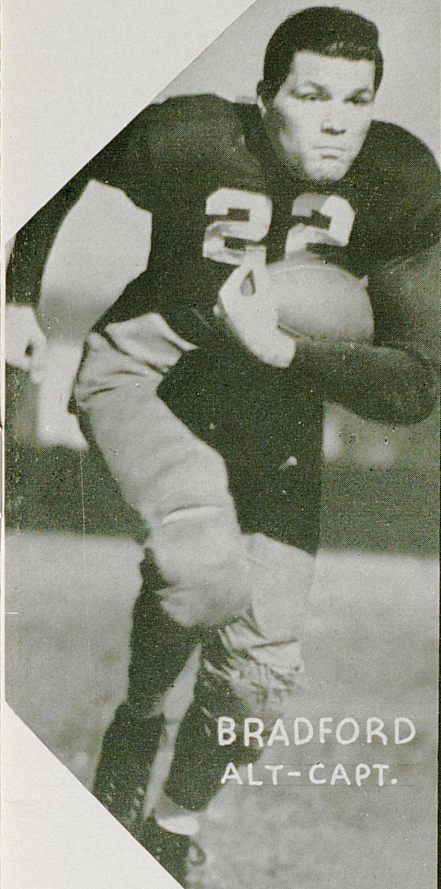


Cropper's Laundry  
(Incorporated)

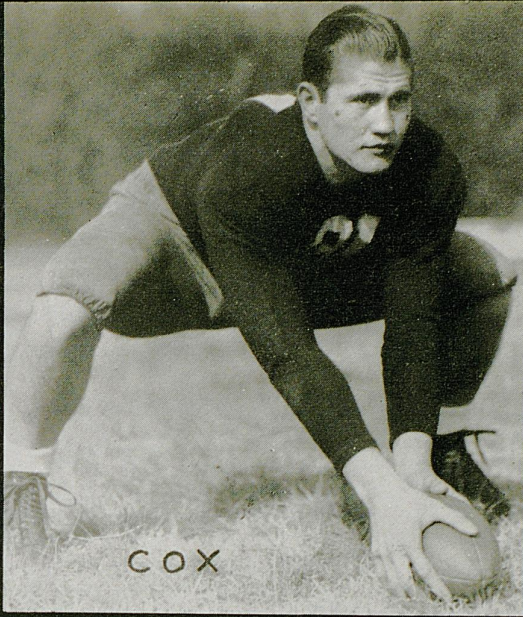
137 NORTH LIMESTONE

Lexington, Ky.

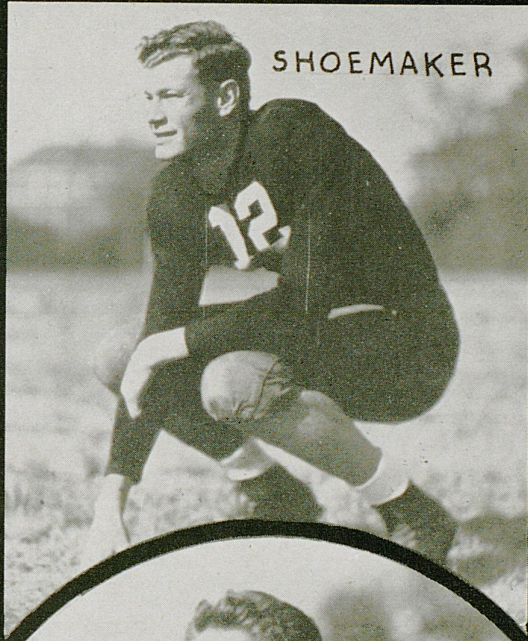




BRADFORD  
ALT-CAPT.



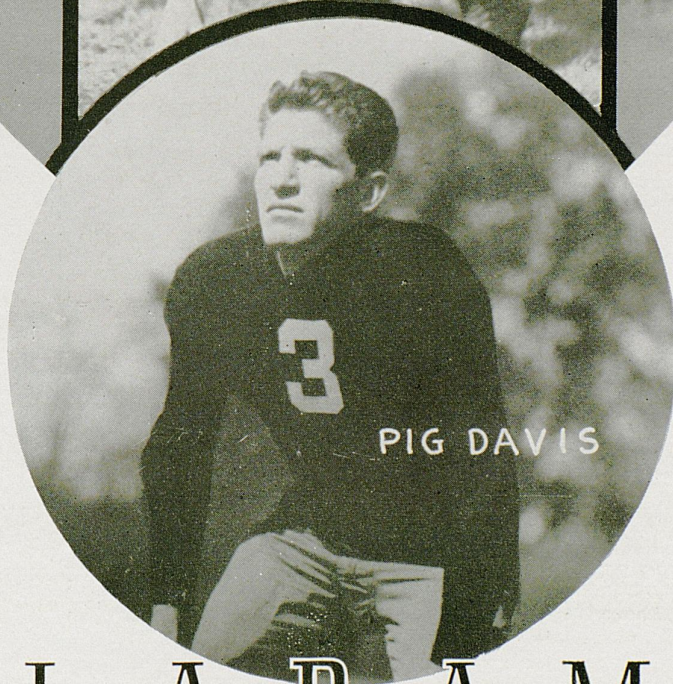
COX



SHOEMAKER



BEARD



PIG DAVIS

A L A B A M A



GO YOU

# WILDCATS

Hit 'Em Hard!

Hit 'Em Low!



GENERAL ELECTRIC AIR CONDITIONING

## Allen - Harper Electrical Engineering Corporation

Phone 6415 — Lexington, Ky.

## Kentucky Ignition Co., Inc.

DISTRIBUTORS AUTOMOTIVE EQUIPMENT

Rose Street at Vine Lexington, Ky.

PHONES 2681 - 2682 - 2683

## Victor Bogaert Co.

DIAMOND IMPORTERS AND  
MANUFACTURING JEWELERS

Established Since 1883

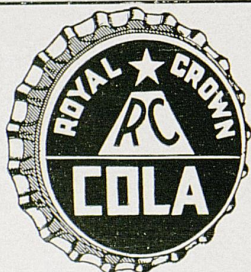
LEXINGTON, KENTUCKY PARIS, FRANCE  
BRUSSELS, BELGIUM

## Carpenter-Warren

INSURANCE

143 N. Upper Lexington, Ky.

TWICE  
AS  
GOOD



TWICE  
AS  
MUCH

Official Photographers for Football Team

## Lafayette Studio

301 W. Main Street Phone 6271

ACTION PICTURES OUR SPECIALTY

A Step From the Field to Home Cooking

## Vitem-Inn

Lime and Euclid

A Convenient Place to Meet Your Friends

## The Sherwin-Williams Co.

All You Need to Know About Paint

350 W. MAIN STREET PHONE 8100

"We Never Disappoint"

## Howard & Heafey

FLORISTS

Phone 404

Winchester Road

Lexington, Ky.

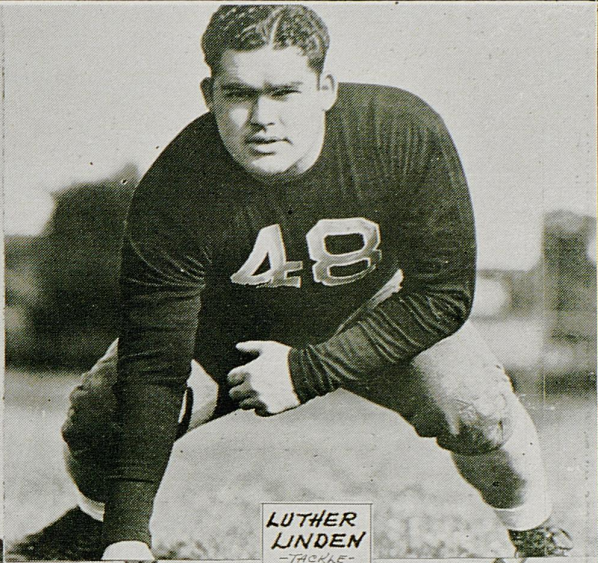
## Union Transfer & Storage Co.

MOVING AND STORAGE

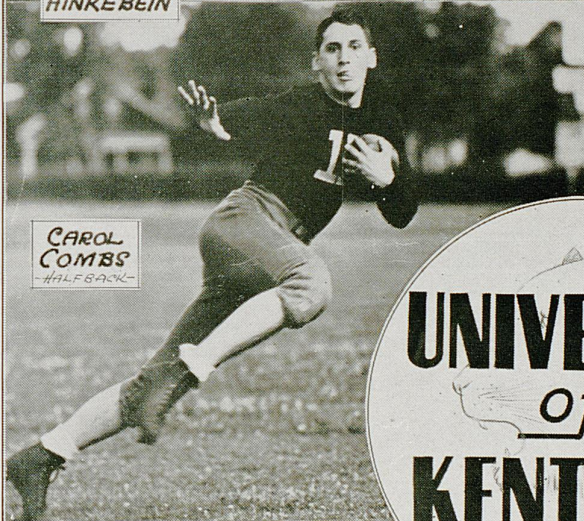
Spring and Vine Streets Phone 1030



CAPTAIN  
HINKEBEIN



LUTHER  
LINDEN  
-TACKLE-



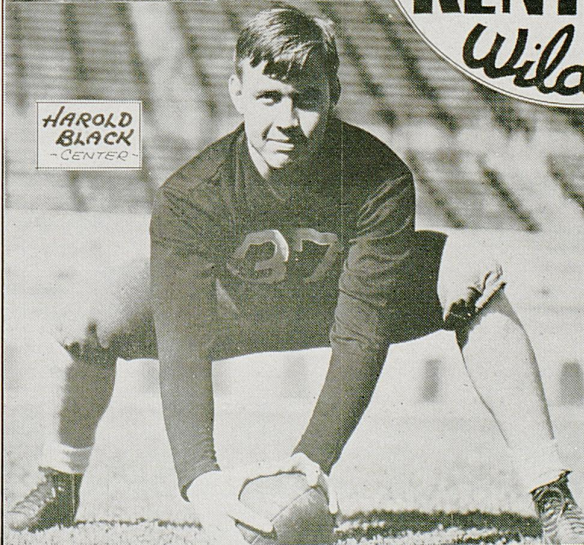
CAROL  
COMBS  
-HALFBACK-



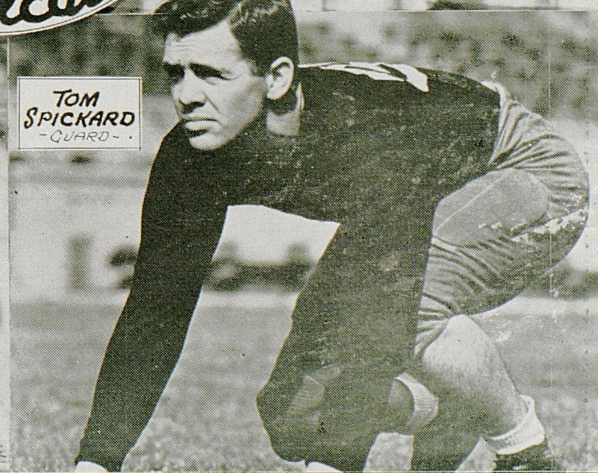
JOE  
SHEPHERD  
-QUARTERBACK-



UNIVERSITY  
of  
KENTUCKY  
*Wildcats*



HAROLD  
BLACK  
-CENTER-



TOM  
SPICKARD  
-GUARD-

DINE AND DANCE  
at  
**RICHMOUNT**

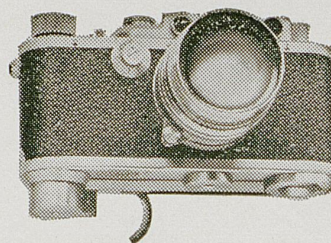
Peace and contentment found only with  
good fellowship and the best of  
food.

NO COVER CHARGE  
Except on Saturday Night  
(25c per person)

2 Miles, Richmond Road  
U. S. HIGHWAY 25

"Bob" Hurst, "Bob" Klarn, Mgrs.

*"The Camera Highlights  
In the World of Sports"\**



Keep a pictorial history of this year's Wildcat  
football games. You'll prize these pictures  
through the years to come. Visit our com-  
plete shop for all your camera needs.

CAMERAS—Contax, Leica, Rolleiflex  
AGFA FILMS AND SUPPLIES

\* With apologies to Movietone News and Ed Thorgeson.

**Blue Grass Optical Co.**

145 North Upper St.

Lexington, Ky.

Lexington's Most Complete Hardware  
and Sporting Goods Store

**THE SMITH-WATKINS  
COMPANY, Inc.**

**Goldsmith Athletic Equipment  
Corbin Hardware**

263 East Main Street  
Phones 28 and 702

The Home of  
**Good Goods and Satisfied  
Customers**

Felix Kennedy

Tom A. Gooding

**DODGE and PLYMOUTH  
MOTOR CARS**

**DODGE TRUCKS**

See the 1939 Models  
Now on Display

Many members of the University of  
Kentucky faculty drive  
DODGE AND PLYMOUTH CARS

Purchased from  
**GOODWIN BROTHERS**

"FORMER U. of K. MEN"



BERNIE SHIVELY  
*U. K. Athletic Director*

He first came to Kentucky in 1927 as assistant to Harry Gamage, head football coach, but gave up coaching for four years after developing great Wildcat lines in seven gridiron seasons. The term "Shively-coached line" became a byword for excellence in football. Now the supporters of the Wildcats have called him back to the gridiron. Once more the Wildcat line coach, Shively also is athletic director. He was an all-America guard at Illinois in 1926, won his bachelor of Arts Degree at Illinois and his Master's Degree at the University of Kentucky.

# Kentucky Independent Oil Co.

Lexington, Kentucky

•

## DISTRIBUTORS OF SINCLAIR PETROLEUM PRODUCTS

IN  
CENTRAL KENTUCKY

O. A. Bakhaus

D. J. Burke

Eats, Drinks and Smokes

## Dunn Drug Store

Lime and Maxwell

PHONE 289

“The Home of Dunn’s  
Better Ice Cream”

Lexington’s Most Beautiful Drug Store

ATHLETIC EQUIPMENT  
FOR EVERY SPORT

WRITE FOR OUR CATALOG  
Special Prices to Schools

## The Sutcliffe Co.

(Incorporated)

Louisville, Ky.

ATHLETIC EQUIPMENT  
FOR EVERY SPORT

WRITE FOR OUR CATALOG  
Special Prices to Schools



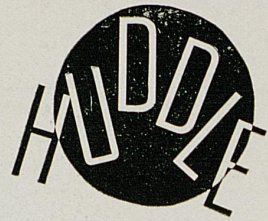


AB KIRWAN  
*Head Football Coach*

In 1925 the Wildcat football captain was Albert Dennis Kirwan, although everyone called him "Ab." He was a great halfback and end and was an outstanding student. Following his graduation here in 1926, he studied law at Louisville and also coached high school football there. His record as coach of duPont Manual Training High School, Louisville, was so fine that his alma mater called him back to lead the Wildcats to their proper level in the football world.



GET INTO A



The best of food is served at the football training table because coaches everywhere realize the importance of nourishing food in building vigorous health.

You need the same vigorous good health to keep fit for the competition of everyday life.

Let us be your training table. We offer you tempting meals, wholesomely prepared, at reasonable prices.

## U. K. CAFETERIA AND GRILL

Student Union Building, Campus

FOR REFRESHMENT

Visit the New and Finer

## CAFETERIA AND GRILL

Serving the Best

# SWIFT'S

ICE CREAM

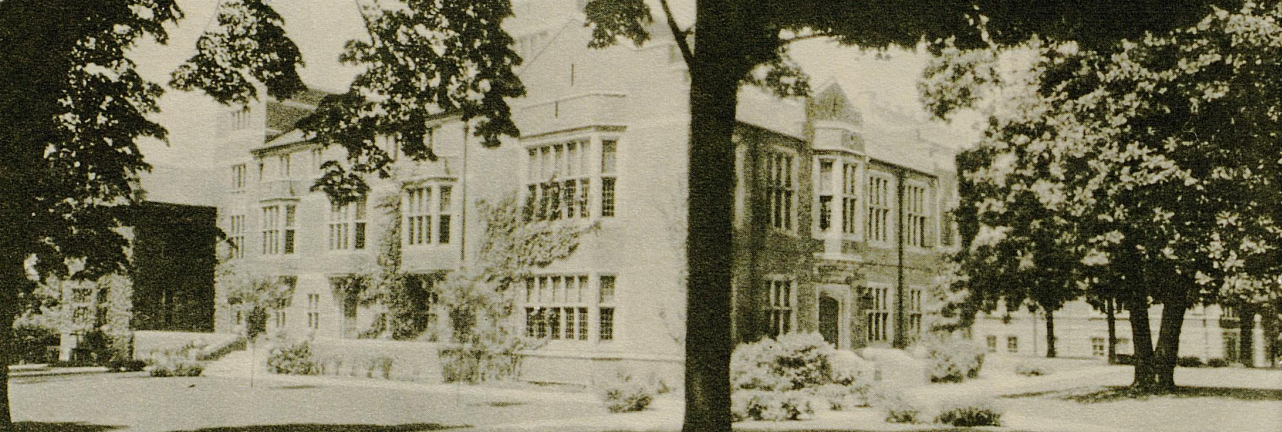


Mississippi State's Famous "Girls In White"



Field Staff and Students of Mississippi State's Geology Department Leave For The West

VANDERBILT BUILDINGS



Alumni Memorial Hall

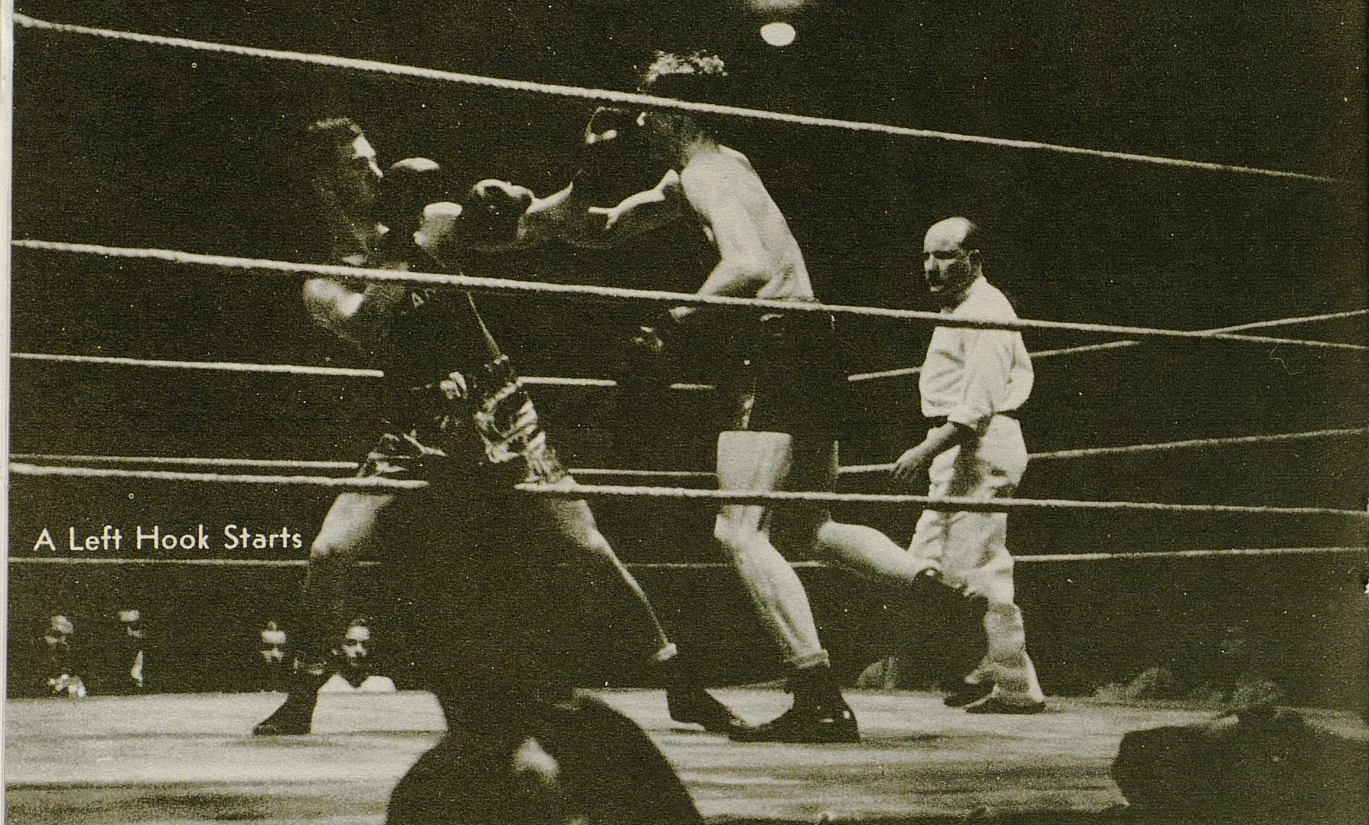


Garland Hall

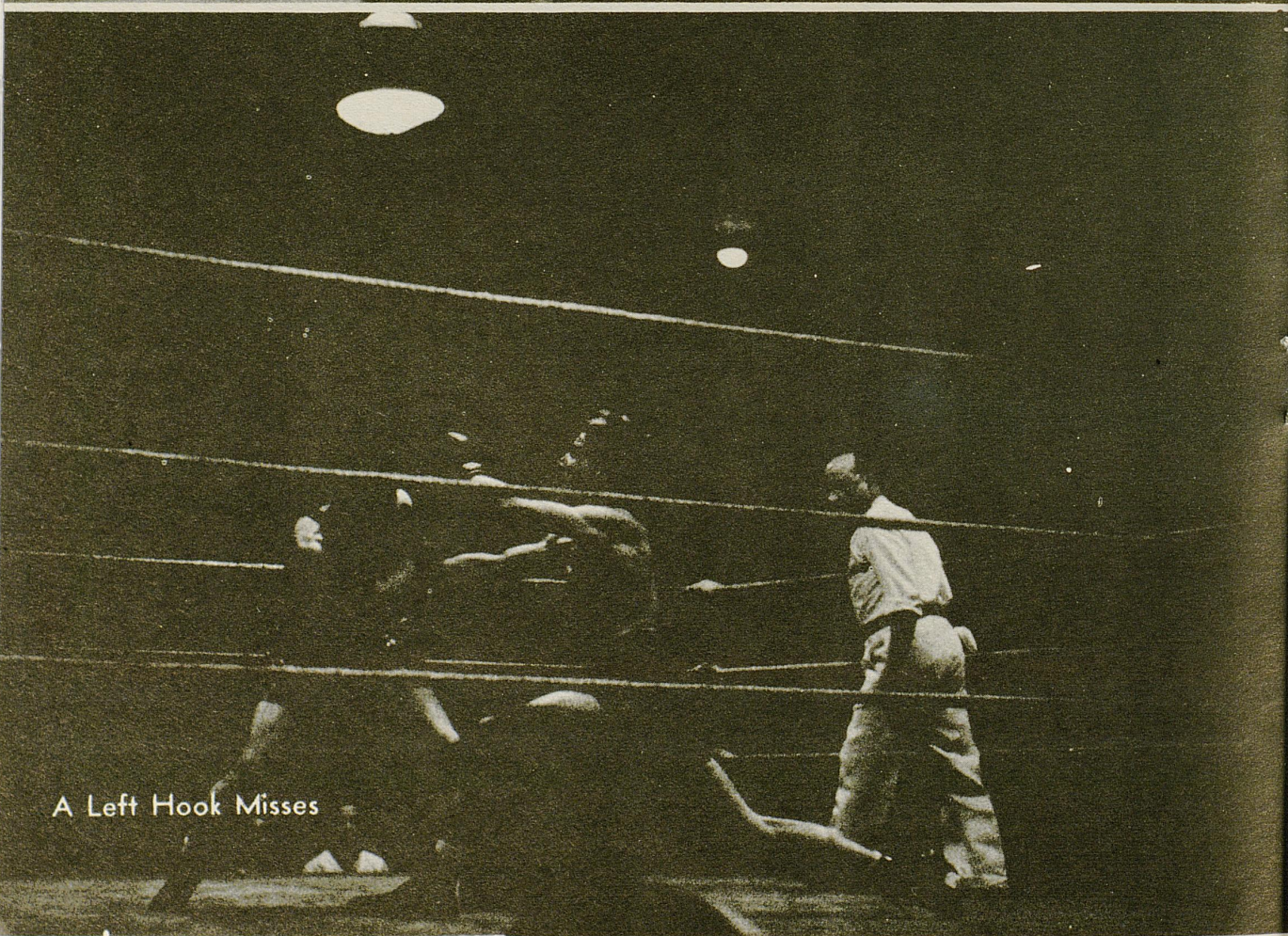
Intramural Competition In 'Bama's  
Old Swimmin' Hole



TULANE BOXERS



A Left Hook Starts



A Left Hook Misses



GO YOU

# WILDCATS

Hit 'Em Hard!

Hit 'Em Low!



COURTESY

**BANK OF COMMERCE**

**Fred Bryant Motor Co.**

Storage Space for 265 Cars

REPAIRING ALL MAKE CARS

Union Station Viaduct — Phone 3810

LEXINGTON, KENTUCKY

SHIRTS LAUNDERED 10c

**BECKER**

**Laundry and Dry Cleaning Co.**

212 S. Lime Phone 621

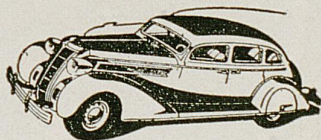
2 Plain Suits, Dress, or Coat—\$1.00

**CONTINENTAL COFFEE**

America's Leading Restaurant and  
Institutional Coffee Served  
Exclusively at the

**Student Union Cafeteria**

**CHRYSLER U-DRIVE-IT CO.**



134 E. Short Street — Phone 8552  
RATES AS LOW AS 10c PER MILE

518 W. Main — 135 N. Lime — 265 E. Main

**White Tavern Shops**

"REAL"

HAMBURGERS 5c

Kelvinator—Air Conditioning—Comfort Cooling

**COMBS LUMBER COMPANY**

Incorporated

439 E. MAIN ST. — TELEPHONE 5300

Commercial Refrigeration—Domestic Refrigeration

**The Tavern**

Opposite Good Samaritan Hospital

Phones 2386 and 9190

TRY OUR REAL ITALIAN SPAGHETTI

"The Most Popular Rendezvous of College Folks  
in the South"

"SURE  
I'LL MEET YOU AT THE  
**PHOENIX DRUG**"  
Phoenix Hotel Block

**L. R. Cooke Chevrolet Co.**

255 East Main Street Phones 1230 and 1231

LEXINGTON, KENTUCKY

"Coast to Coast"  
**MILNER HOTEL**  
\$1.00 — DAY — \$1.50  
114-18 West Short

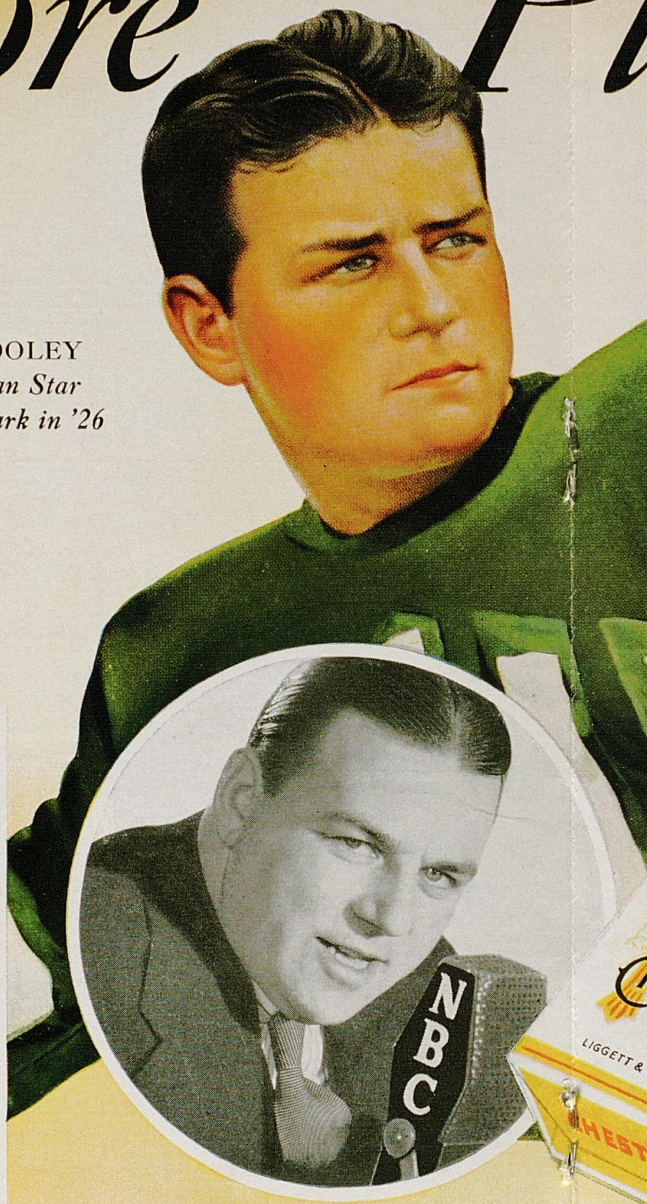
**DRAKE HOTEL**

317-235 W. Short  
TELEPHONE 7280

# More P



EDDIE DOOLEY  
All-American Star  
hitting the mark in '26



## KENTUCKY vs. ALABAMA

*Probable Starting Lineups*

WILDCATS		CRIMSON TIDE	
36	Hardin . . . . . LE	Warren	21
46	Brown . . . . . LT	Merrill	48
33	Willoughby . . . . . LG	Foshee	30
27	Hinkebein (c) . . . . . C	Cox	41
41	Spickard . . . . . RG	(c) Bostick	33
54	Reid . . . . . RT	Woods	46
44	McCubbin . . . . . RE	Shoemaker	10
24	Shepherd . . . . . QB	Bradford	27
48	Zoeller . . . . . LH	Mosley	53
11	Mason . . . . . RH	Zevich	2
29	Carnes . . . . . FB	Holm	32

### OFFICIALS

- T. G. KAIN, Georgia . . . . . Referee  
 JOHN E. PITTS, Auburn . . . . . Umpire  
 LEE R. TOLLEY, Sewanee . . . . . Headlinesman  
 WILSON COLLINS, Vanderbilt . . . . . Field Judge

... and Eddie Dooley today

... with his accurate C  
 ball forecasts every Thu  
 and complete scores eve

Join the millions w  
 a pack of Chesterfields r  
 sure than you can find a  
 a cigarette — Chesterfiel



# Pleasure for MILLIONS



...y today  
...urate Chesterfield foot-  
...ery Thursday, highlights  
...ores every Saturday.  
...illions who know this—  
...erfields means *more plea-*  
...n find anywhere else in  
...esterfields *Satisfy.*

## KENTUCKY

- |                 |                  |                |
|-----------------|------------------|----------------|
| 2 Curtis, b     | 26 Huddleston, g | 42 Spears, e   |
| 4 Eibner, t     | 27 Hinkebein, c  | 43 Gambol, t   |
| 5 Scott, e      | 28 Powell, b     | 44 McCubbin, e |
| 6 Parda, g      | 29 Carnes, b     | 45 Johnson, b  |
| 11 Mason, b     | 30 Palmer, g     | 46 Brown, t    |
| 13 Combs, b     | 31 Bailey, c     | 47 Linden, t   |
| 15 Tognocchi, e | 32 Jackowski, b  | 48 Zoeller, b  |
| 16 Ishmael, b   | 33 Willoughby, g | 50 Hammond, b  |
| 20 Ramsey, b    | 35 McEneely, g   | 51 Black, c    |
| 21 Denham, e    | 36 Hardin, e     | 52 Martin, e   |
| 22 Davis, b     | 37 Jacobs, t     | 53 Fritz, g    |
| 24 Shepherd, b  | 39 Vires, g      | 54 Reid, t     |
| 25 French, c    | 40 McCarthy, e   | 55 Gholson, e  |
|                 | 41 Spickard, g   |                |

## ALABAMA

- |                 |                    |                 |
|-----------------|--------------------|-----------------|
| 2 Zevich, b     | 25 Hanson, b       | 41 Cox, c       |
| 3 Slemons, b    | 26 Averitte, c     | 42 Redden, g    |
| 5 Waites, b     | 27 Bradford, V., b | 44 Wesley, c    |
| 10 Shoemaker, e | 28 Newman, e       | 45 Langdale, t  |
| 14 Davis, A., b | 30 Foshee, g       | 46 Woods, t     |
| 16 Gornto, e    | 31 Sugg, g         | 47 Davis, F., t |
| 19 Harkins, g   | 32 Holm, b         | 48 Merrill, t   |
| 20 Blackwell, e | 33 Bostick, g      | 53 Mosley, b    |
| 21 Warren, e    | 37 Hickerson, g    | 55 Beard, b     |
| 23 Wicke, b     | 38 Hughes, b       | 58 Boswell, b   |
|                 | 40 Borders, t      |                 |

1 2 3 4  
quar. quar. quar. quar. TOTAL

Wildcats					
Crimson Tide					

THE WHITE SPOT WELCOMES YOU

We are always ready to serve you the best of Foods at any time—  
for 24 hours a day—

... we put the O. K. in Cooking

**THE WHITE SPOT**

George Sarras — 103 East Main Street

WHY NOT PARK?

**Sistrunk's Public Storage Garage**

Mill and Vine Streets

Low Parking Rates

Washing—Greasing

Chrysler Invades the Low Priced Field

**Kinkead-Wilson Motor Company**

Distributors

**CHRYSLER AND PLYMOUTH CARS**

**Kentucky Jewel Coal Company**

**WHOLESALE AND RETAIL COAL**

Rail and Truck Deliveries

Block Egg Stoker • Steam Domestic Industrial

NO. 2 UNION STATION BUILDING

Lexington, Ky.

HARRY E. BULLOCK, President

Phone 660

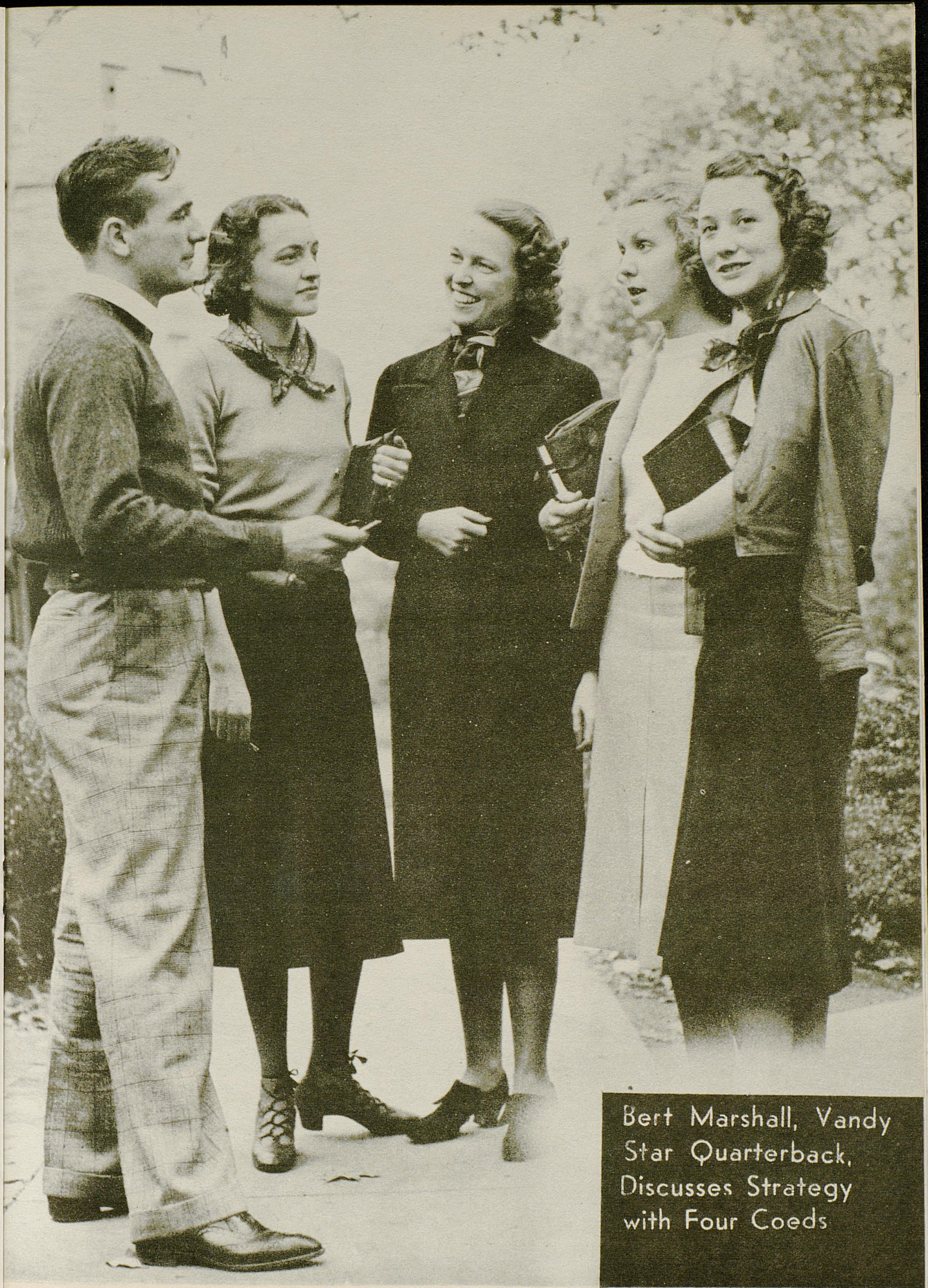
Space Reserved  
for  
A Cincinnati  
Friend

Keep  
Alert

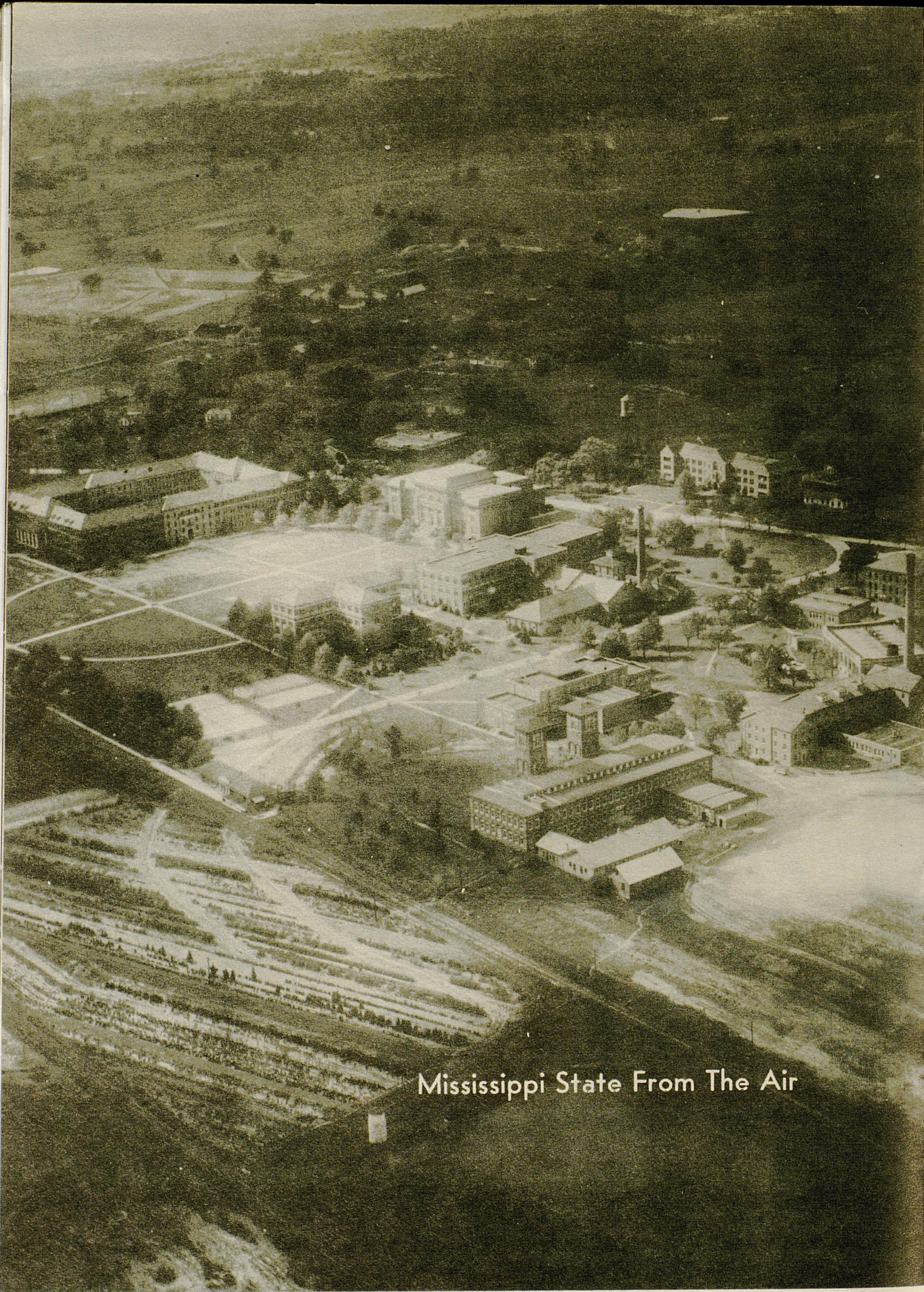


Luscious  
Lifting

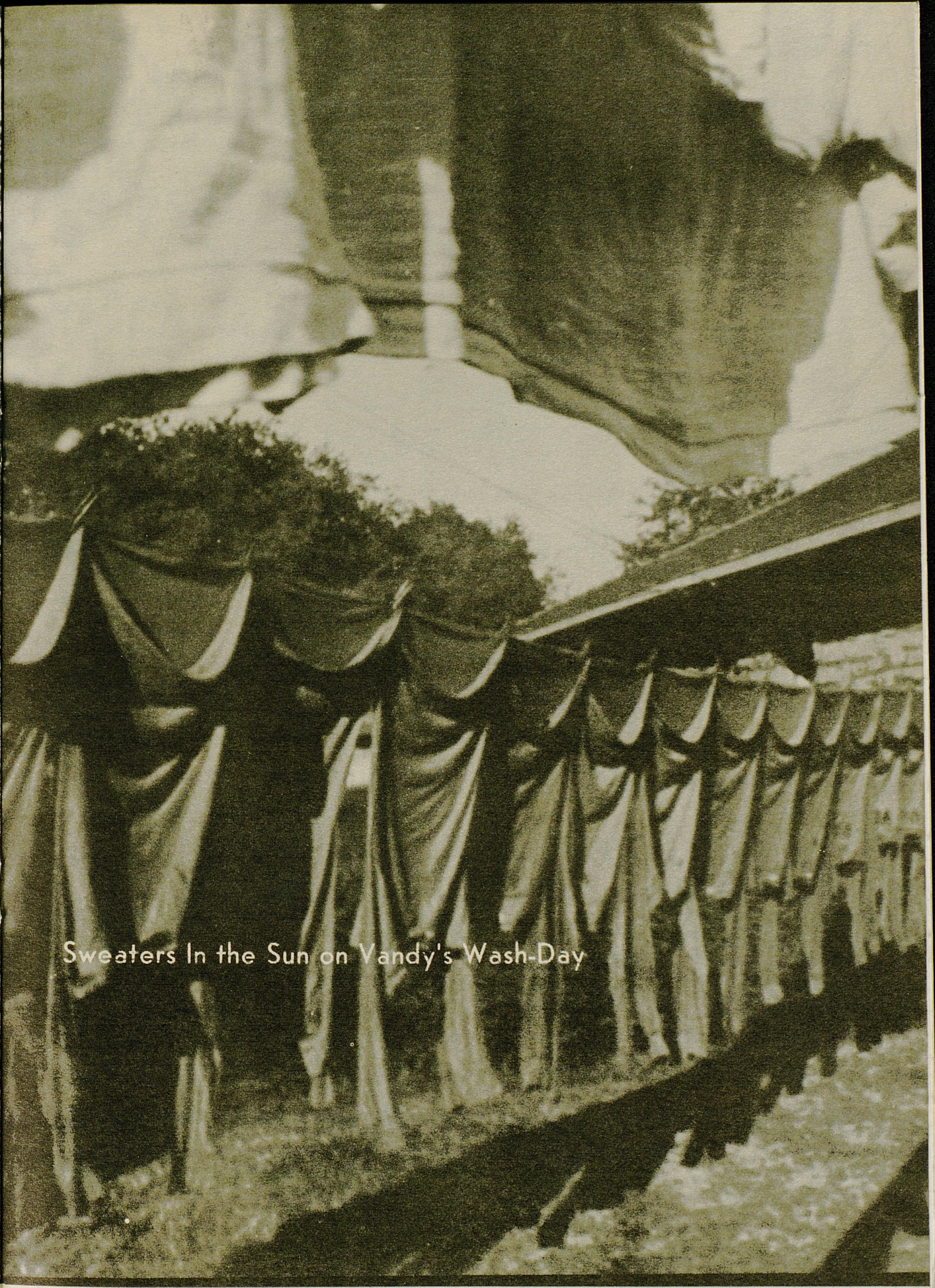
**DOUBLE COLA BOTTLING CO.**  
Phone 143 Lexington, Ky.



Bert Marshall, Vandy  
Star Quarterback,  
Discusses Strategy  
with Four Coeds

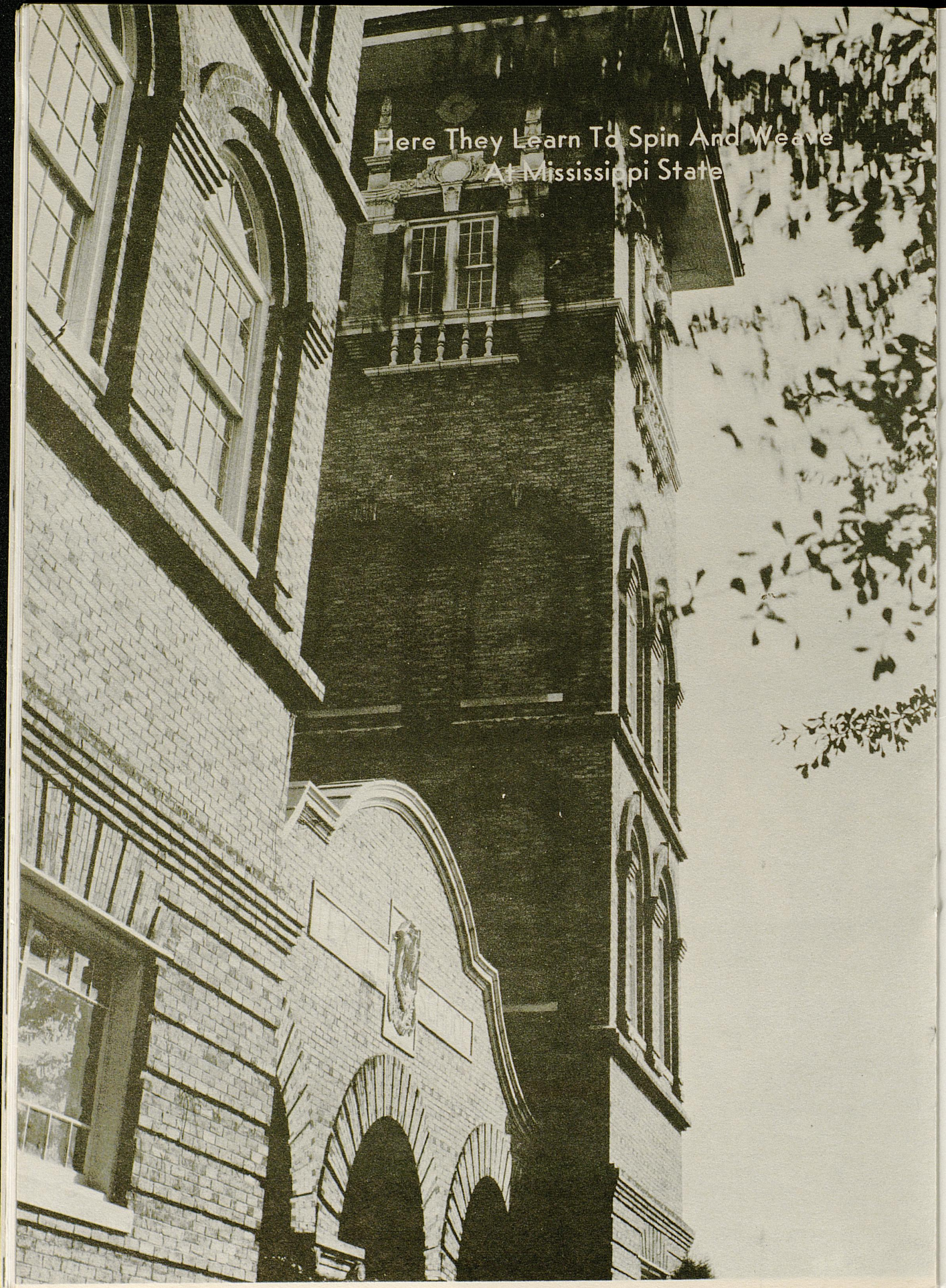


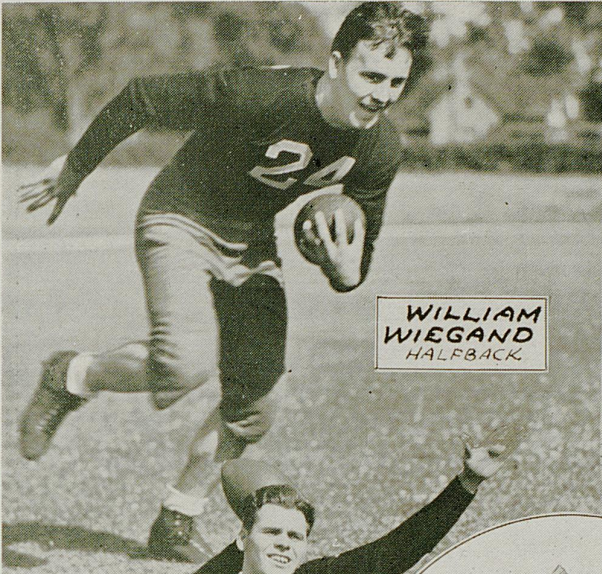
Mississippi State From The Air



Sweaters In the Sun on Vandy's Wash-Day

Here They Learn To Spin And Weave  
At Mississippi State





**WILLIAM  
WIEGAND**  
HALFBACK

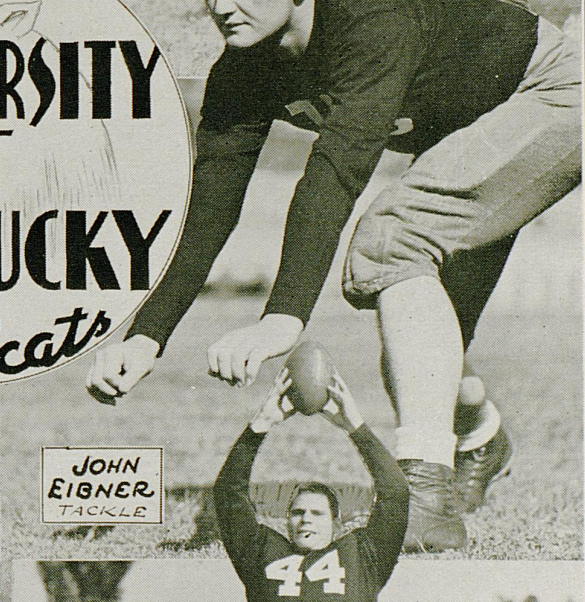


**ALEX  
PARADA**  
GUARD



**DAMERON  
DAVIS**  
HALFBACK

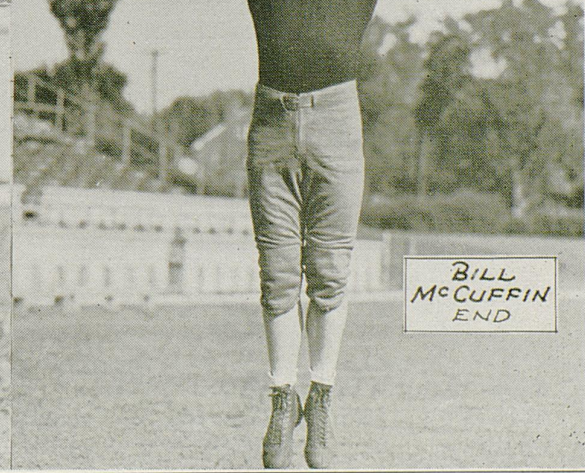
**UNIVERSITY**  
*of*  
**KENTUCKY**  
*Wildcats*



**JOHN  
EIGNER**  
TACKLE



**WILCE  
CARNES**  
FULLBACK



**BILL  
MCCUFFIN**  
END

4699-19

## ASHLAND FAMILY LAUNDRY

CALL ASHLAND 127

## THE LAFAYETTE HOTEL

extends a cordial welcome and an invitation to the football fans to meet with us after the games — renew old friendships, greet new friends and enjoy the spirit of good fellowship that abounds.

## PERRY LUMBER COMPANY

(Incorporated)

246 WALTON AVENUE

PHONE 5500

“BUILDERS OF BETTER HOMES”

CAREY ROOFING ● ROCK TEX INSULATION  
MASONITE BOARD AND PRESSBOARD ● LUMBER ● PORTLAND CEMENT  
DRAIN TILE ● BERRY BROTHERS' PAINTS ● GALVANIZED ROOFING  
YALE BUILDERS HARDWARE ● GENERAL HARDWARE  
RYBOLT FURNACES

## SPOTSWOOD SPECIALTY CO., Inc.

Phone 705 — Lexington, Ky.

DANCE FAVORS

BALLONS

CONFETTI

SERPENTINE

HATS

HORNS

Originators and Manufacturers of Advertising Specialties

## POWER OIL COMPANY

(Incorporated)

DISTRIBUTORS

Shell Gasoline, Oil and Grease

Phone 2403

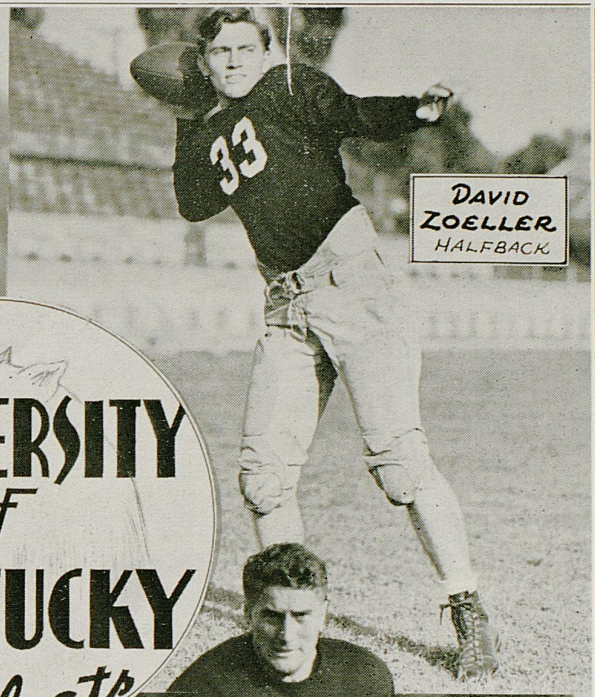
Lexington, Ky.





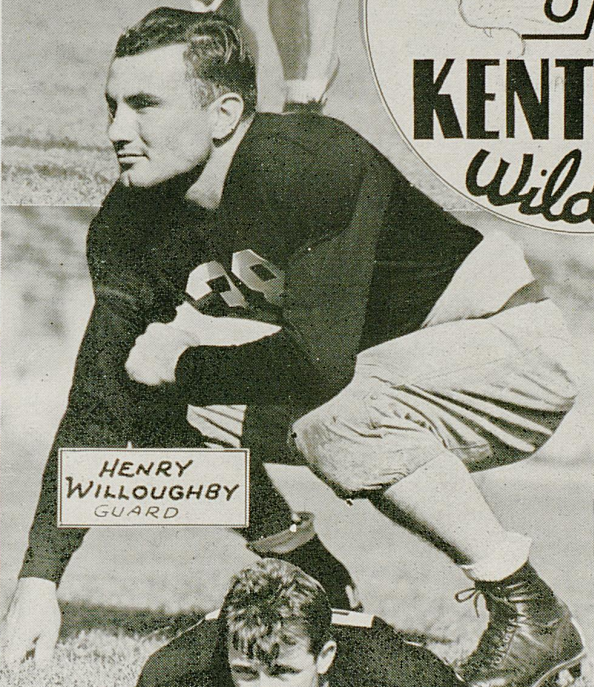


**CHARLES  
ISHMAEL**  
FULLBACK

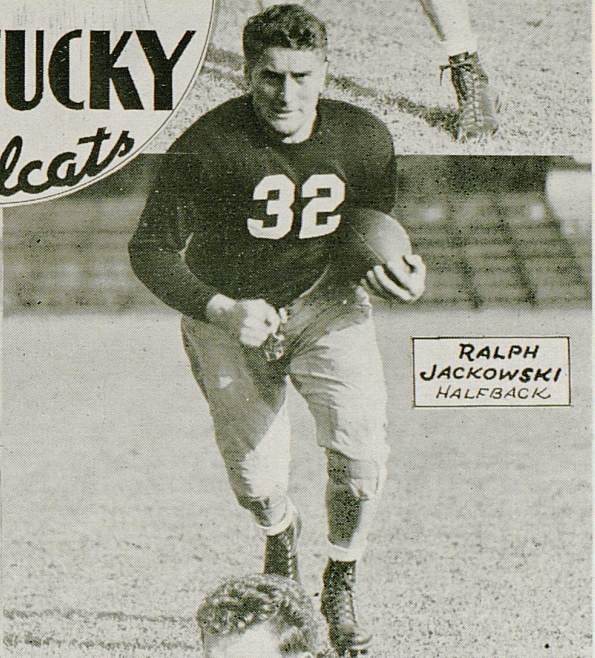


**DAVID  
ZOELLER**  
HALFBACK

**UNIVERSITY**  
*of*  
**KENTUCKY**  
*Wildcats*



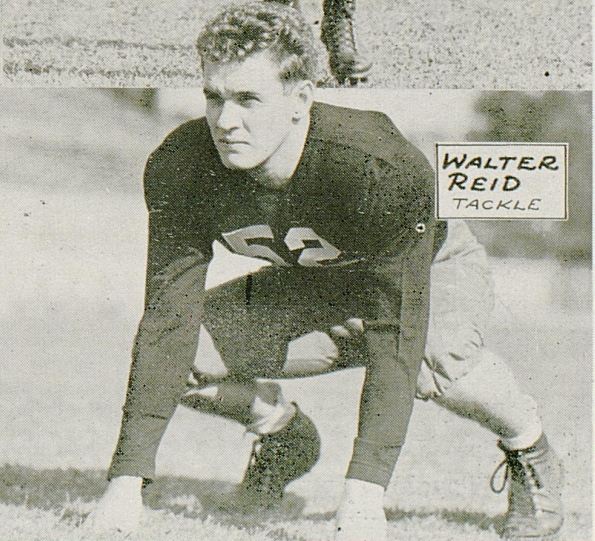
**HENRY  
WILLOUGHBY**  
GUARD



**RALPH  
JACKOWSKI**  
HALFBACK



**EDWARD  
FRITZ**  
GUARD



**WALTER  
REID**  
TACKLE

# 1938 KENTUCKY SQUAD 1938 ROSTER

No.	Name	Pos.	Year on squad	Weight	Home
51	Black, Harold	C	3	190	Covington
31	Bailey, Joe	C	1	190	Paducah
46	Brown, Harry	T	3	191	Paint Lick
29	Carnes, Wilce	B	2	178	Cincinnati, Ohio
2	Curtis, Fred	B	2	169	Nashville, Tenn.
13	Combs, Carol	B	1	165	Hazard
22	Davis, Dameron	B	3	168	Dayton
21	Denham, Harry	E	1	175	Maysville
4	Eibner, John	T	1	215	Jeannette, Pa.
25	French, Melvin	C	1	191	Melrose, Ill.
53	Fritz, Eddie	G	1	178	New Britain, Conn.
43	Gambol, Lawrence	T	1	188	Earlington
55	Gholson, Ed	E	1	173	Paducah
26	Huddleston, Chas.	G	1	180	Benham
27	Hinkebein, Sherman	C	3	199	Louisville
36	Hardin, James	E	1	177	New Albany, Ind
50	Hammond, Claud	B	1	173	Williamson. W. Va.
16	Ishmael, Charles	B	1	185	Pikeville
32	Jackowski, Ralph	B	2	184	Chicago, Ill.
37	Jacobs, Ed	T	1	220	Paducah
45	Johnson, Bernard	B	1	145	Lexington
47	Linden, Luther	T	2	212	Blue Diamond
44	McCubbin, Wm.	E	2	181	Louisville
11	Mason, Chester	B	1	172	Newport
52	Martin, Charles	E	1	174	Harlan
35	McEneely, Bernard	G	1	178	Chicago, Ill.
40	McCarthy, John	E	1	177	Chicago, Ill
6	Parda, Alex	G	2	176	New Britain, Conn.
30	Palmer, Robert	G	1	188	Mt. Sterling
28	Powell, Don	B	1	186	Chicago, Ill.
54	Reid, Walter	T	1	189	Paducah
20	Ramsey, Lloyd	B	1	167	Somerset
5	Scott, Philip	E	1	176	Birmingham, Ala.
24	Shepherd, Joseph	B	2	166	Louisville
41	Spickard, Thomas	G	2	187	Princeton
42	Spears, Lawrence	E	1	193	Ceredo-Kenova, W.Va.
15	Tognocchi, George	E	1	178	Cincinnati, Ohio
39	Vires, Peter	G	2	194	Louisville
33	Willoughby, Emmett	G	1	181	Winston, Ga.
48	Zoeller, David	B	1	178	New Albany, Ind.

1938

ALABAMA SQUAD  
ROSTER

1938

No.	Name	Pos.	Year	Weight	Home
26	Averitte, Warren	C	1	199	Greenville, Miss.
55	Beard, Buddy	B	3	156	Guntersville, Ala.
20	Blackwell, Gene	E	2	180	Blytheville, Ark.
40	Borders, Tommy	T	1	201	Birmingham, Ala.
33	Bostick, Lewis (c)	G	3	200	Birmingham, Ala.
58	Boswell, Charles	B	2	172	Ensley, Ala.
27	Bradford, Victor	B	3	186	Memphis, Tenn.
41	Cox, Carey	C	2	196	Bainbridge, Ga.
14	Davis, Alvin	B	3	181	Green Forest, Ark.
47	Davis, Fred	T	1	238	Louisville, Ky.
30	Foshee, Jesse	G	3	196	Clanton, Ala.
16	Gornto, Jack	E	1	179	Valdosta, Ga.
25	Hanson, John	B	1	191	Roanoke, Ala.
19	Harkins, Grover	G	3	190	Gadsden, Ala.
37	Hickerson, Ed	G	1	214	Ventura, Calif.
32	Holm, Charley	B	3	187	Birmingham, Ala.
38	Hughes, Halbert	B	3	192	Pine Bluff, Ark.
45	Langdale, Noah	T	1	239	Valdosta, Ga.
48	Merrill, Walter	T	2	220	Andalusia, Ala.
53	Mosley, Herky	B	2	160	Blytheville, Ark.
28	Newman, Harold	E	1	199	Birmingham, Ala.
42	Redden, Jake	G	3	202	Vernon, Ala.
10	Shoemaker, Perron	E	3	175	Birmingham, Ala.
3	Slemons, Billy	B	2	173	Orlando, Fla.
31	Sugg, Cullen	G	2	206	Russellville, Ala.
5	Waites, Bud	B	2	170	Tuscaloosa, Ala.
21	Warren, Tut	E	3	184	Montgomery, Ala.
44	Wesley, Norman	C	1	202	Talladega, Ala.
23	Wicke, Dallas	B	2	180	Pensacola, Fla.
46	Wood, Bobby	T	2	231	McComb, Miss.
2	Zevich, George	B	3	180	E. Chicago, Ind.



GO YOU

# WILDCATS



Hit 'Em Hard!

Hit 'Em Low!

Compliments of

**Ades - Lexington Dry Goods Company**

## Metropolitan Restaurant

"FAMOUS FOR"  
STAKES — CHOPS  
and  
SEA FOODS

107-111 W. Main

Lexington, Ky.

## Hempel's

Southern Dye Works  
*(Established 1883)*

BENZOL DRY CLEANING  
380 E. Main Street Cor. Southeastern Ave.

LEXINGTON, KENTUCKY

## Lagrew's

"Home of Goodyear"

- GOODYEAR TIRES
- BATTERIES
- LIFEGUARD TUBES

## Rodes Arnsperger Insurance

120 N. UPPER LEXINGTON, KY.

Long Distance Phones L. D. 99-100  
City Phones 7760, 7761, 7762, 7763

## Wombell Automotive Parts Company

*(Incorporated)*

THE PARTS AND EQUIPMENT HOUSE  
151-153-155 East Short Street  
LEXINGTON, KENTUCKY

## Faulkner Builders & Supply Co.

BUILDERS SUPPLIES—COAL  
585 East Third St.  
Phone 2838

"BUY THE BEST—IT'S CHEAPER"

## Hubbard & Curry

PRESCRIPTIONS — KODAKS  
FILMS — MOTION PICTURE EQUIPMENT  
DEVELOPING

Short and Lime phones 1280 - 1281

Compliments of

**Lexington Cab Company**  
*(Incorporated)*

## Young's Bakery

THE BEST IN BREADS AND PASTRY  
USED IN NEW CAFETERIA

115 N. Broadway

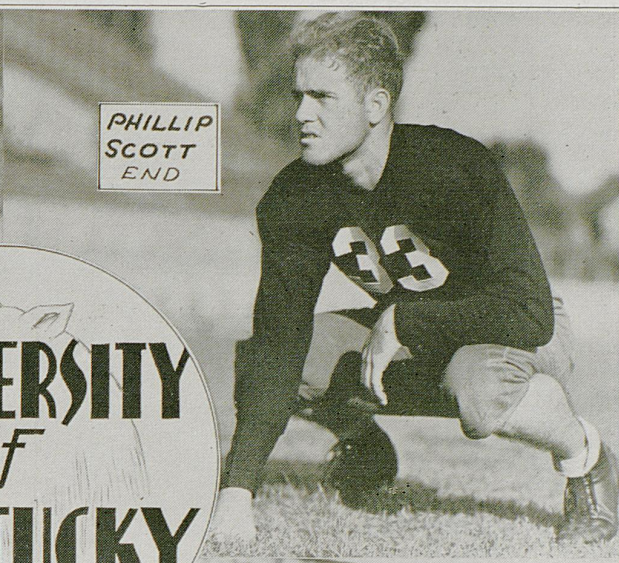
Phone 767

Compliments of

**Lexington Yellow Cab**  
*(Incorporated)*

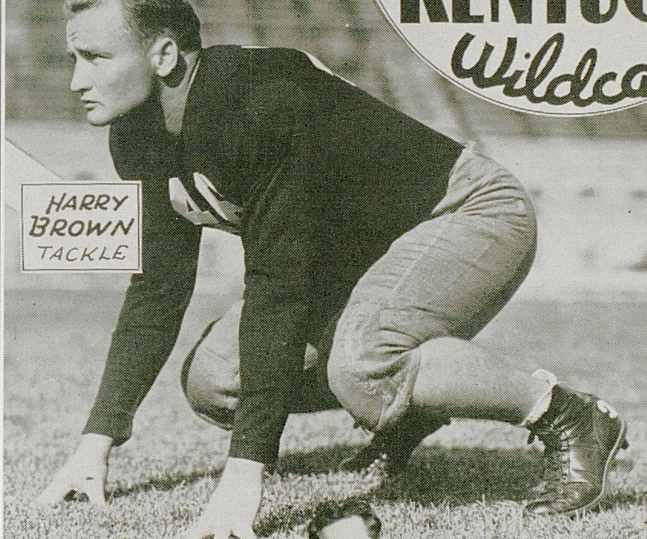


LAWRENCE  
SPEARS  
END



PHILLIP  
SCOTT  
END

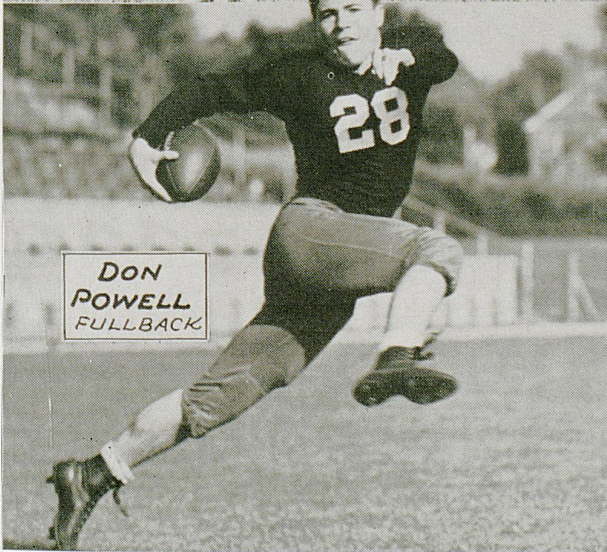
UNIVERSITY  
of  
KENTUCKY  
*Wildcats*



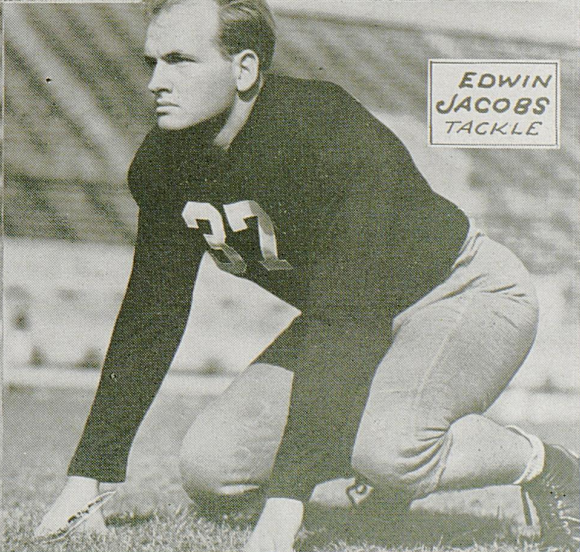
HARRY  
BROWN  
TACKLE



PETE  
VIRES  
GUARD



DON  
POWELL  
FULLBACK



EDWIN  
JACOBS  
TACKLE

IF YOU WANT  
QUICK STARTING,  
SPEED, POWER  
USE

RED PEPPER  
BETTER ETHYL  
GASOLINE

●  
Pepper Gasoline Co.

DISTRIBUTORS

Elmer Rix, President

Lexington,

Kentucky



The Place to Meet  
After the Game

**CANARY COTTAGE**  
The South's Finest Restaurant

South's Finest Restaurant

- Lexington ● Cincinnati ● Louisville  
● Indianapolis

RADIOS AT ALL PRICES

We specialize in radios for the home  
and for the students' room.

Zenith - Emerson

and the

NEW

Stewart - Warner

Varsity Radio

In Your School Colors

**Automatic Home Equipment Co.**  
Incorporated

227 E. MAIN ST.

LEXINGTON, KY.

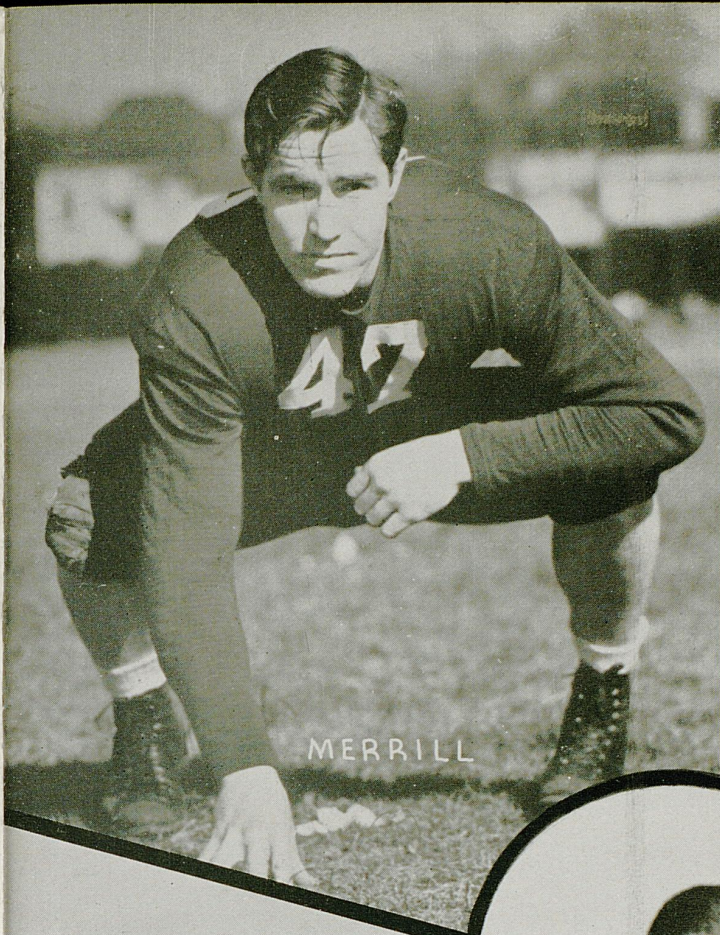
Convenient Terms

Complete Radio Service on All Makes

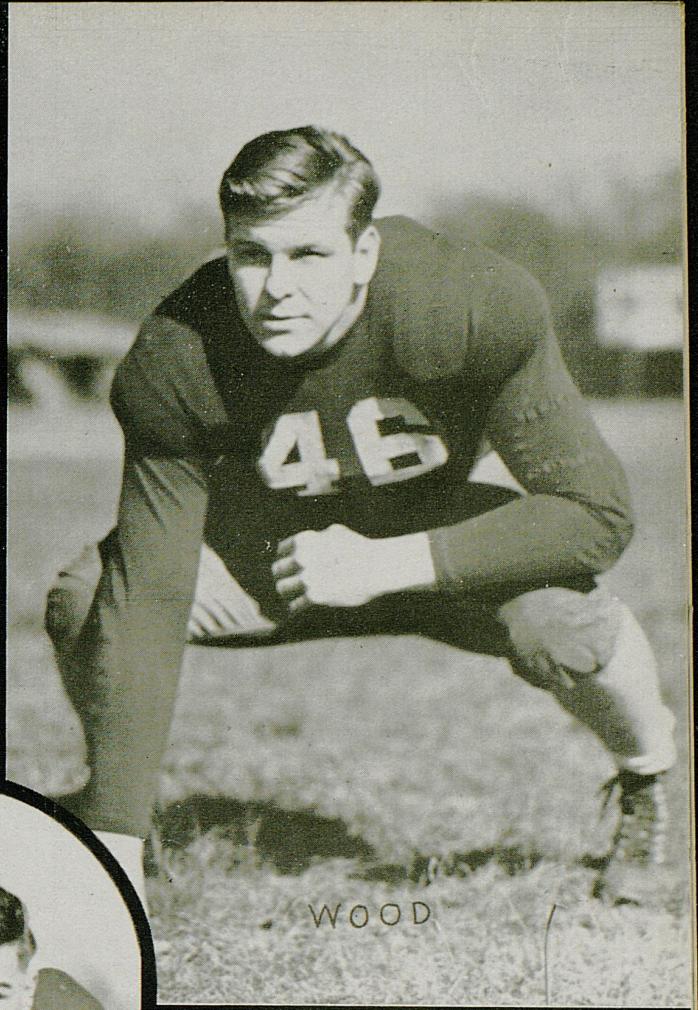
*Argus Candid*  
*Cameras*

*\$12.50*

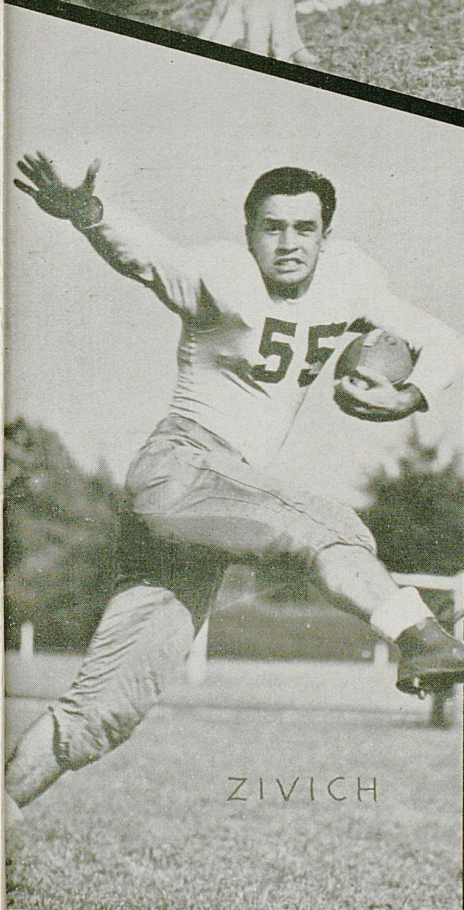
●  
*Campus Book Store*  
*McVey Hall*



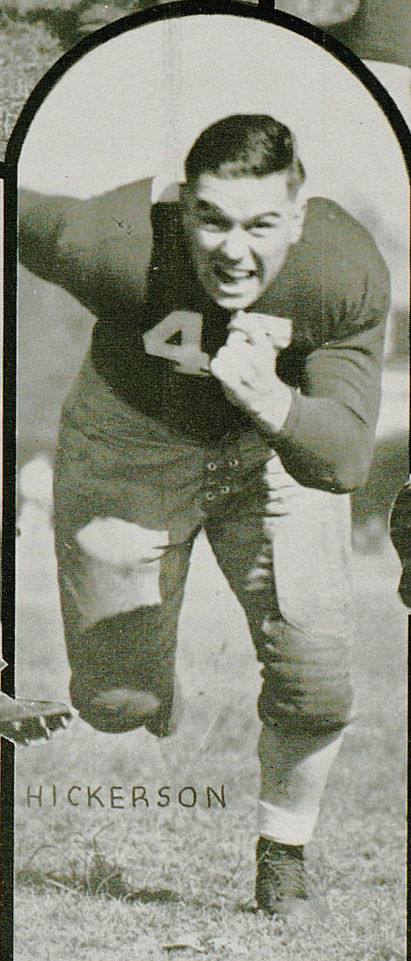
MERRILL



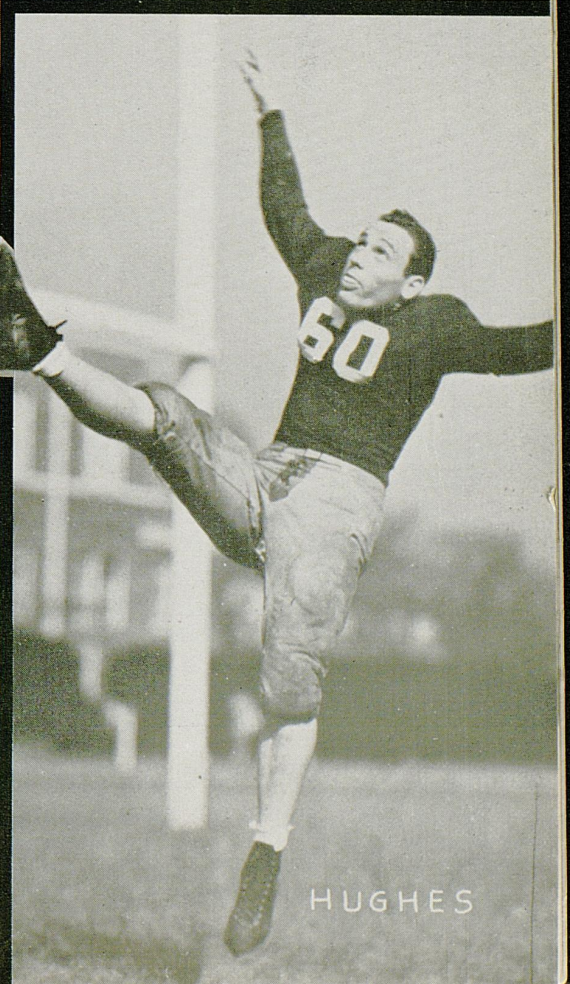
WOOD



ZIVICH

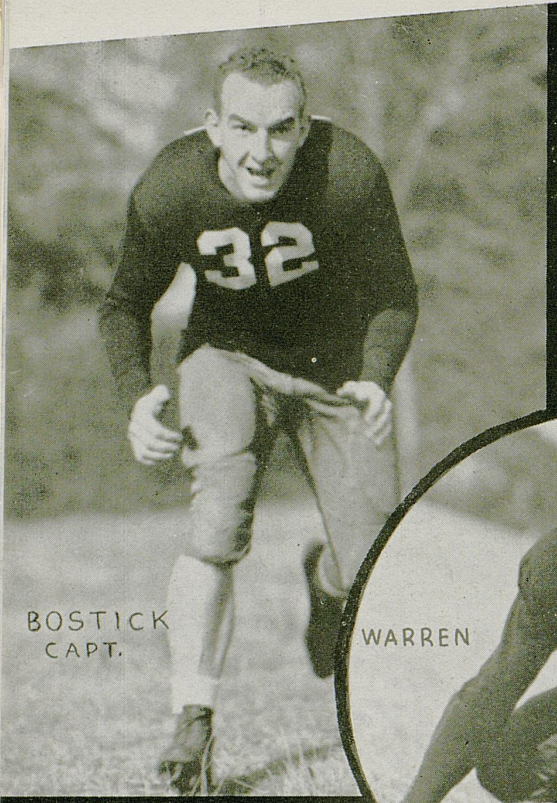


HICKERSON

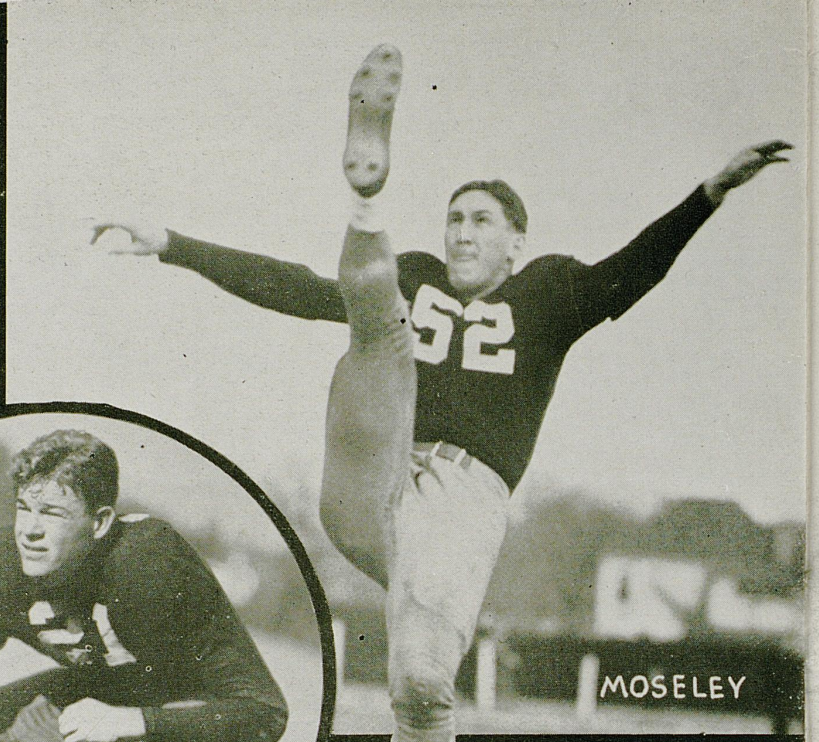


HUGHES

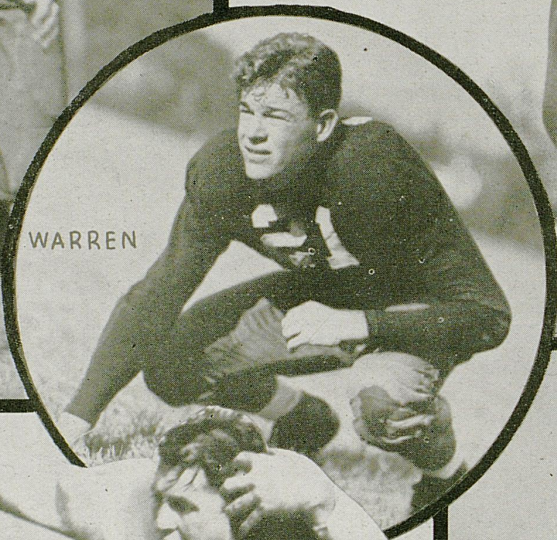
# ALABAMA



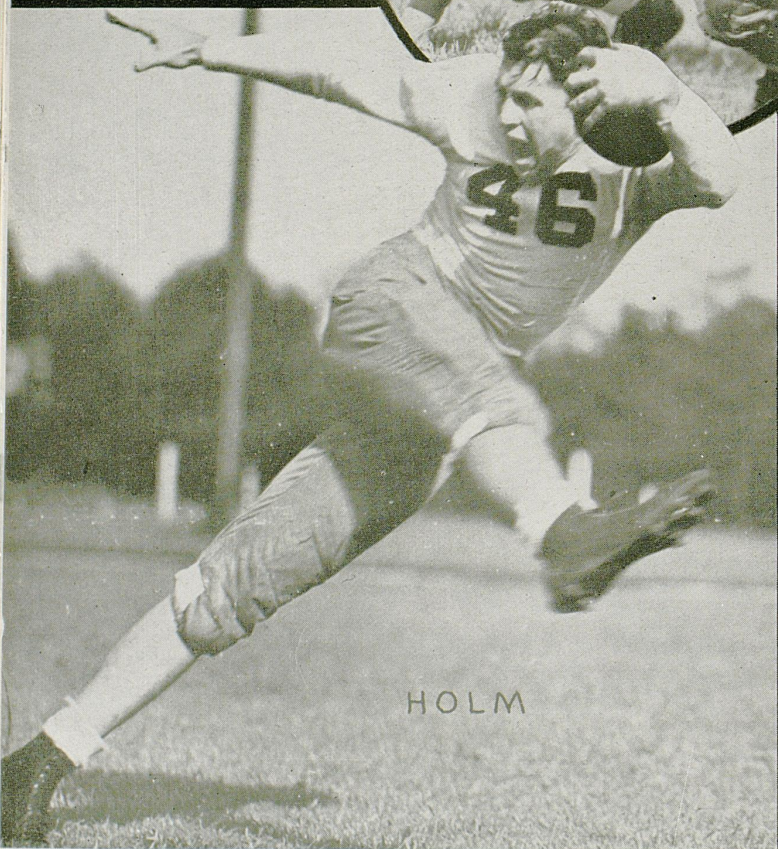
BOSTICK  
CAPT.



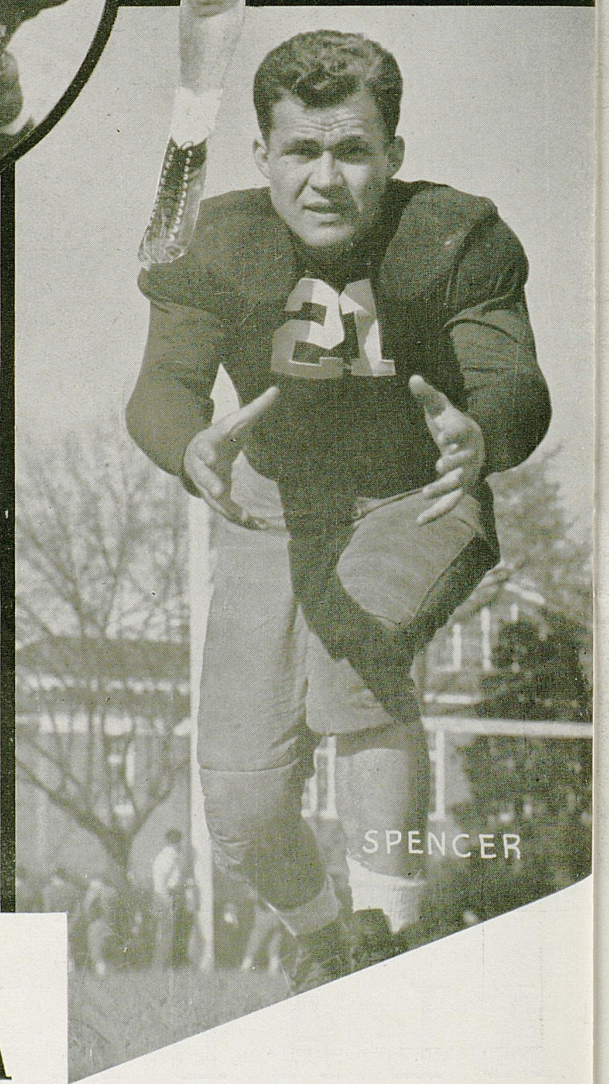
MOSELEY



WARREN



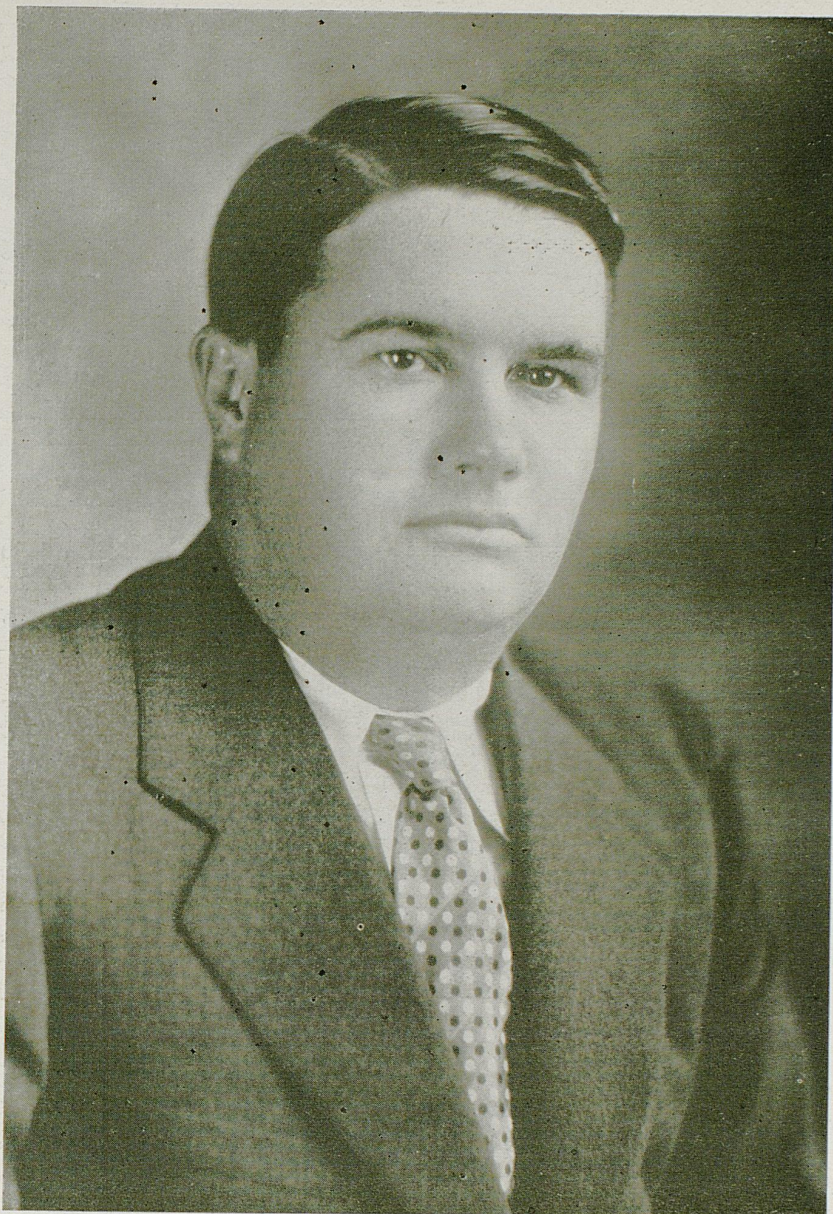
HOLM



SPENCER

# ALABAMA





Coach FRANK THOMAS, *Alabama*

FOR REFRESHMENT  
Drink  
ORANGE CRUSH

DRINK  
Lexington Dairy  
MILK

COLLEGIATE SHOES OF DISTINCTION  
for  
CHIC CO-EDS . . . and . . . CAMPUS MEN

**BAYNHAM'S**



GO YOU

# WILDCATS

Hit 'Em Hard!

Hit 'Em Low!



Compliments of

**Bryan - Hunt Company**  
Incorporated

WHOLESALE GROCERS

Lexington, Kentucky

**H. Rudig and Sons**

141 W. Short

Lexington

Successors to  
J. S. POER PAINT AND GLASS CO., Incorporated  
CONTRACTING PAINTERS AND GLAZIERS

We Furnished and Installed All Plate Glass  
In the New Press Box

**Skuller's**

Lexington's Leading Jeweler and Silversmith

115 W. Main St.

LEXINGTON, KY.

**Chevy Chase**

SUBDIVISION

• Homes of Distinction •

CLAY SIMPSON, Agent

149 Market St.

**STOP!**

To And From The Game  
FOR DELICIOUS SANDWICHES  
HAMBURGERS — CONEYS  
and  
COUNTRY HAM  
Our Specialty

**Coney Cabin**

Lime and Maxwell

**L. F. Rue**

"Lexington's Complete Food Shop"

2 Phones 5800

Main St. and Clay Ave.

BEST O' LUCK TO THE WILDCATS

**Louis des Cognets & Co.**

"BUILDERS OF GOOD ROADS"

And This Stadium

**O. E. LYONS COMPANY**

ELECTRICAL EQUIPMENT

343 E. Main

Phone 365

For PERFECT DRY CLEANING Phone 62

**Lexington Laundry Company**

Don't Leave Your Thirst — Quench it



Pepsi Cola Bottling Co.

Phone 985



Joe Shepherd--Kentucky Quarterback



Coach Crisp--'Bama Athletic Director

Flor



Florida's Student Activities Building



Mary Jane Hutson--Tulane Cheerleader

**“IT MATTERS NOT WHETHER YOU WIN OR LOSE,  
BUT HOW YOU PLAY THE GAME”**

That's the type of support pledged to you by each director,  
officer and employee of LEXINGTON'S OLDEST  
AND LARGEST BANK

**First National Bank & Trust Co.**

(Established 1865)

**LEXINGTON, KENTUCKY**

**Member Federal Deposit Insurance Corporation**

**SUKY CIRCLE SERVING YOU**



**Dixie Ice Cream Co., Inc.**

**Lexington, Ky.**